

Illustrated Parts List - IPL Update



Product Name(s)

H555

Description of change

1. New Crankshaft 575 54 52-14 with new ball bearings. New ball bearings with improved durability.
2. New Ball bearings 525 43 42-03 and 505 13 35-03 with improved durability.
3. New Crankcase, assy 575 38 02-17 with new ball bearings. The Clutch side of the crankcase is made of Aluminium, which will increase the durability.
4. New Screw 510 02 06-02 for oil pump. This screw has a Micro coating, Dri Loc added for sealing. This due to the screw holes for the oil pump goes straight through the new crankcase.
5. A New Clutch, assy kit 589 80 90-01 with increased lifetime has been introduced. This kit consists of Clutch, assy and an instruction.

The Old spring 580 65 35-02 **can't** be used on the New Clutch 589 80 90-01. The New spring 502 16 47-01 **can't** be used on the Old Clutch 574 23 61-04.
6. A New Air filter, 505 12 63-07 has been introduced. This air filter has a new filter fabric with 25 µm. The new filter has an orange color.
The filter has replaced the 44 µm filter on PNC:s 555: 966 01 00. 44 µm filter remains as spare part.

Comments

This update is fully exchangeable except for the Clutch spring. The Old spring 580 65 35-02 **can't** be used on the New Clutch 589 80 90-01 and The New spring 502 16 47-01 **can't** be used on the Old Clutch 574 23 61-04.

Introduced from

Serial number / Date	Remark
s/n 20162400208	Valid for Bearings and Crankshaft.
s/n 20164300001	Valid for Crankcase assy. and Screw IHSCM.
s/n 20164100193	Valid for Clutch assy.
s/n 20164300001	Valid for Air filter.

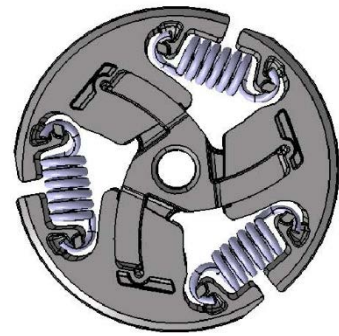
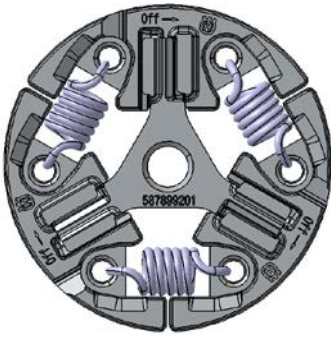
IPL updates

Page Title	Ref. no	New part no	Name	Excl. part no.	Remark
Crankshaft	1	575 54 52-14	Crankshaft assy	575 54 52-10	
	2	505 13 35-03	Ball bearing	505 13 35-02	
	3	525 43 42-03	Ball bearing	525 43 42-02	
Crankcase	5	575 38 02-17	Crankcase, assy	575 38 02-12	
Carburetor & Air filter	1	505 12 63-07	Air filter		New spare part.
Clutch & Oil pump	1	589 80 90-01	Clutch assy, kit	574 23 61-04	
	2		Clutch spring	580 65 35-02	Remain as spare part only for the old Clutch 574 23 61-04.
	2	502 16 47-01	Clutch spring		New spare part only for new Clutch 589 80 90-01.
	14	510 02 06-02	Screw IHSCM	510 02 06-01	Remain as spare part.

5. Clutch kit.

New version.

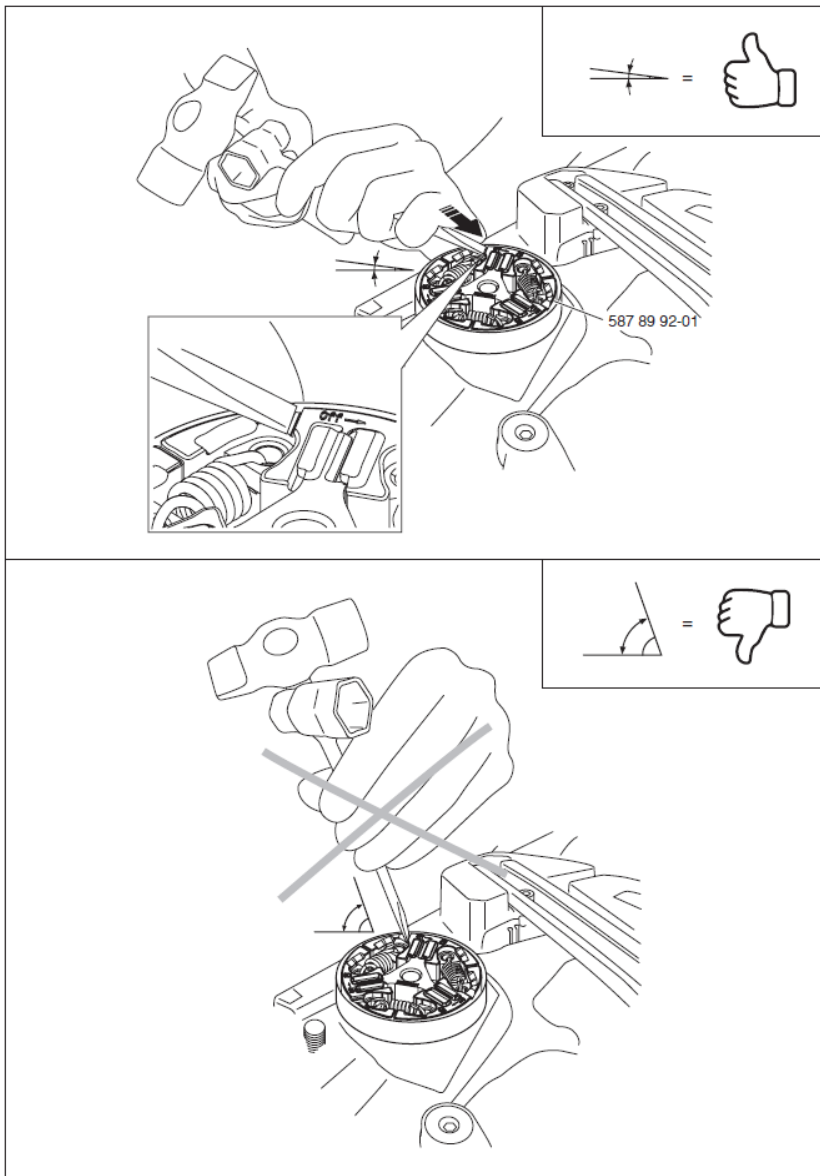
Old version.



589 80 90-01

574 23 61-04

+



589 80 91-01