

Illustrated Parts List - IPL Update



Product Name(s)

T540XP11

Description of change

1. New improved chain bar adjusting pin 588 85 03-01 added on Clutch cover assy 505 54 31-03. Pin improved regarding chain tension.
2. New improved Starter pulley 506 90 23-02 with 4 engaging points instead of 2 added on Starter assy 506 90 21-03.

Comments

This update is fully exchangeable.

Introduced from

Serial number / Date	Remark
S/n 20172200097	Valid for Clutch cover assy and Pin.
S/n 20175100001	Valid for Starter pulley and Starter assy.

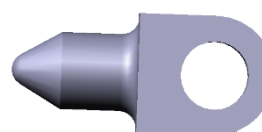
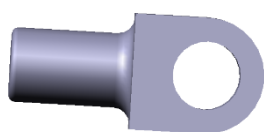
IPL updates

Page Title	Ref. no	New part no	Name	Excl. part no.	Remark
Chain brake & Clutch cover	4	505 54 31-03	Clutch cover, assy	505 54 31-02	
Chain brake & Clutch cover	5	588 85 03-01	Pin - Bar adjusting	501 45 41-02	
Cylinder & Piston	10	574 51 96-01	Spark plug	531 00 86-15	Correction.
Starter	1	506 90 21-04	Starter, assy	506 90 21-02	
Starter	5	506 90 23-02	Starter pulley	506 90 23-01	

1. Pin – Bar adjustment

New version

Old version



588 85 03-01

501 45 51-02

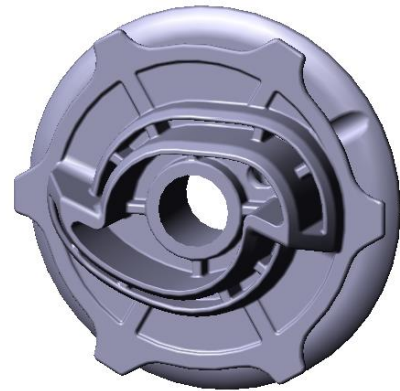
2. Starter pulley

New version



506 90 23-02

Old version



506 90 23-01

