

YTH1120-14



1.1990

Spare parts

Ersatzteile

Pièces détachées

Reserve onderdelen

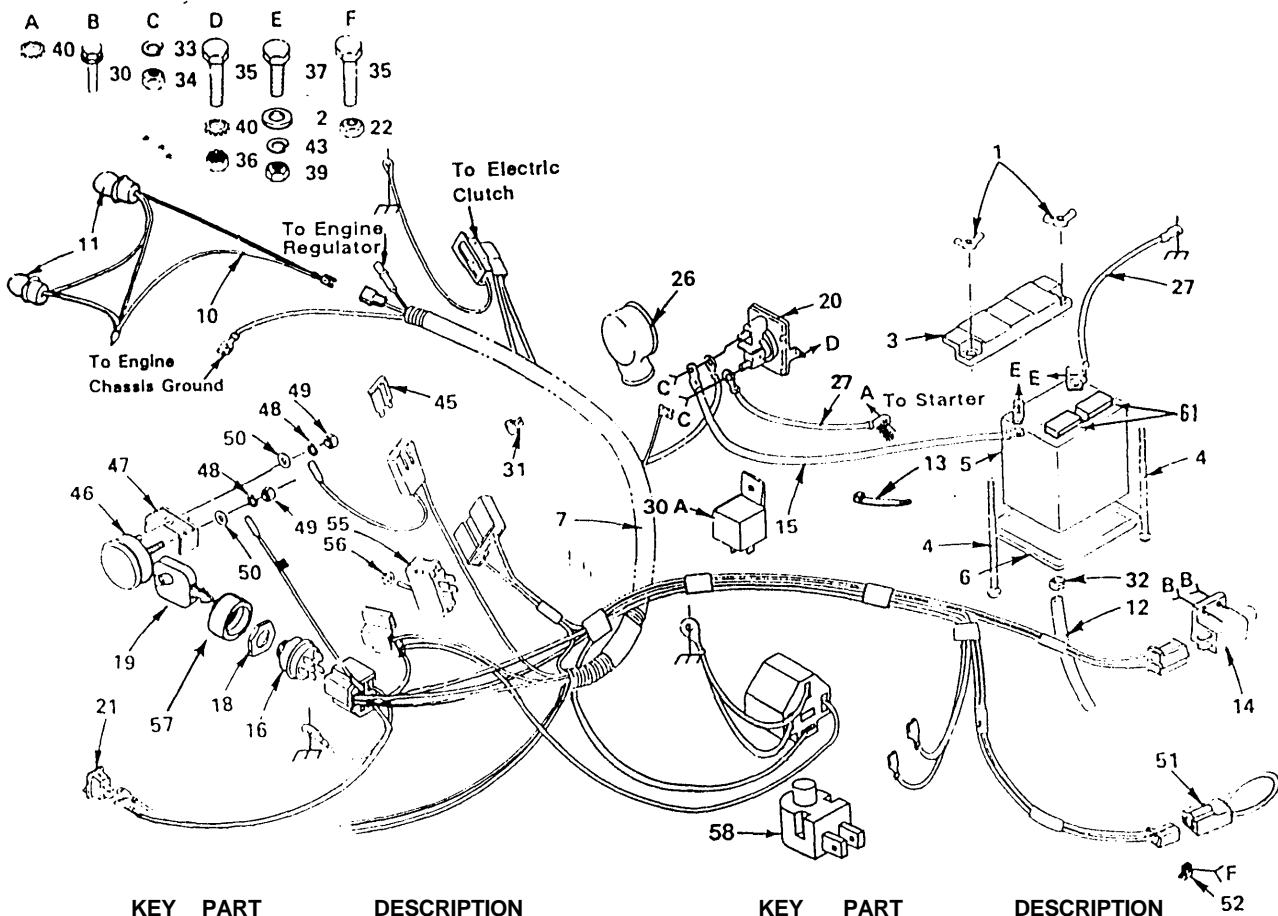
Repuestos

Reservdelar

REPAIR PARTS

YARD TRACTOR

ELECTRICAL

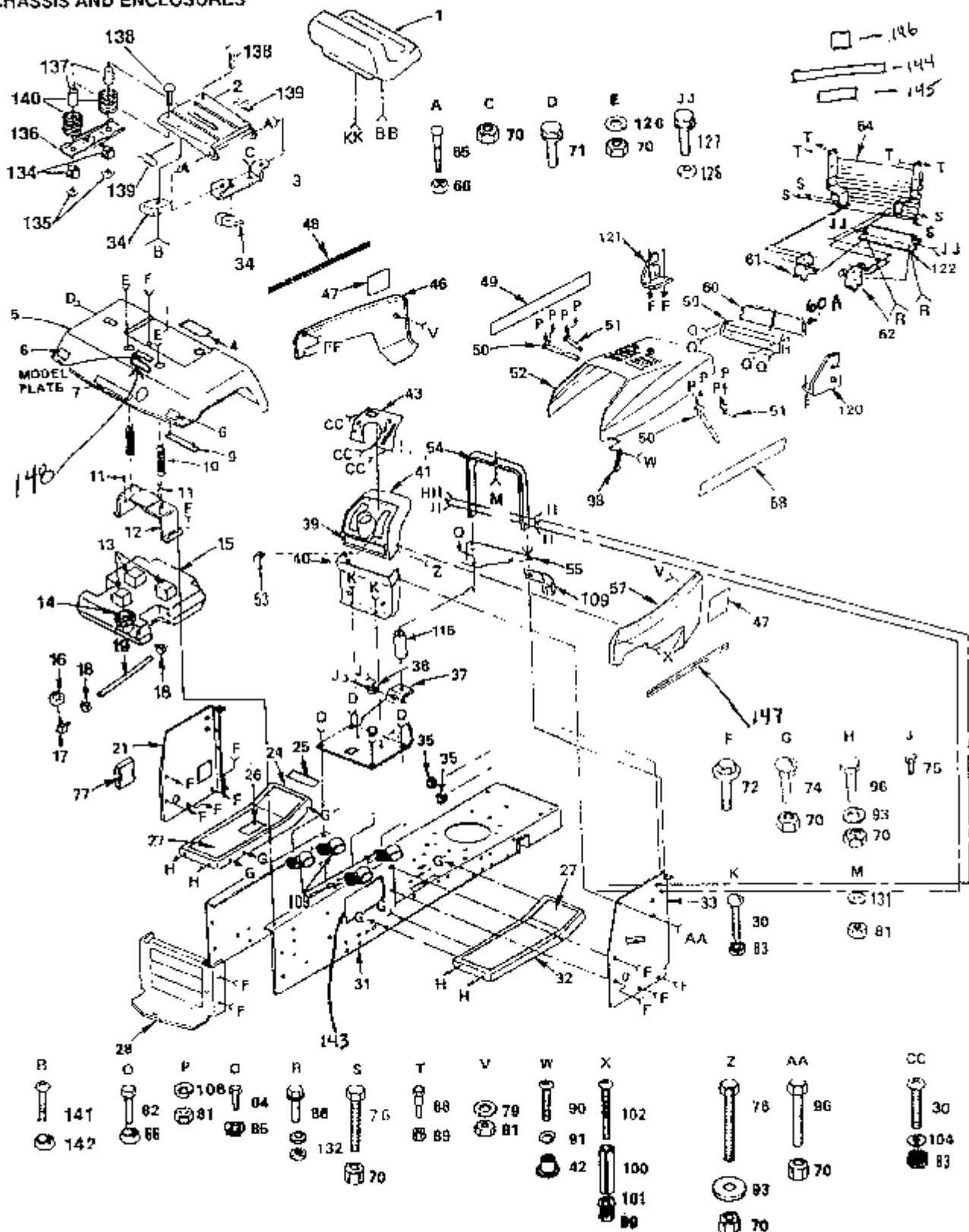


KEY NO.	PART NO.	DESCRIPTION	KEY NO.	PART NO.	DESCRIPTION
1	532 12 31-98	Wing Nut 1/4-20	33		Washer.Lock.External.Tooth 3/
2		Washer 9/32 x 5/8 x 16 Ga	35		Bolt-Hex 1t4-20 x 1/2 Gr.5
3	532 10 24-76	Guard-Terminal	36		Nut- Keps, Hex 1/4-20
4	872 24 04-60	Battery Bolt (Bolt-Carriage,Rd. Hd. Sq. Neck 1/4-20 x 7-1t21	37		Bolt-Hex i/4-20 x 3/4
5	532 12 15-37	Battery	39		Nut-Hex 1/4-20
6	532 12 48-86	Battery Tray	40		Washer-Lock 1/4 Ext. Tooth
7	532 12 38-26	Harness - Ignition (includes item 30A)	43		Lockwasher 1/4
10	532 11 08-59	Harness-Light Socket	45	532 10 88-24	Fuse-30 Amp.
11	532 00 76-62	Bulb-Light	48		Washer.Lock.External.Tooth 3/
12		Tube-Battery Tray	51	532 10 25-01	Loop-Wire Tiller Attachment
13	532 12 47-56	Cable Tie	52	532 12 49-95	Clip- Insulated
14	532 10 95-53	Switch - Interlock - Clutch	55	532 12 60-18	Switch PTO
15	532 12 45-03	Cable-Battery (Battery to Solenoid)	56	532 00 40-22	Nut-Hex
16	532 10 29-72	Ignition Switch	57	532 10 97-87	Bezel, Ignition
18	532 10 97-88	Nut- Ignition	58	532 12 13-05	Switch.Plunger
19	532 12 21-47	Key	61	532 12 12-64	Caps, Battery Set
20	532 12 57-01	Diode Asm.Zener	62	532 12 45-24	Light Package
21	532 11 07-12	Switch-Light	63	532 12 15-49	Decal.Battery
22		Nut - Crownlock 1/4-20	64		Bolt.Fin.Hex 1/4-20 UNC x 1/2 G
26	532 12 47-83	Terminal Cover	65		Bolt.Fin.Hex 3/8-16 UNC x 1
27	532 12 47-73	Cable-Battery (Battery to Ground)	-	532 10 15-39	Sheet - Instruction, Tractor 15 ° Slope (English)
30	817 02 10-08	Screw-Tap. Hex Hd. No.10-24 UNC	-	532 12 55-99	Owners Manual (English)
30A	532 10 97-48	Relay	-	532 10 15-72	Sheet, Instruction, Tractor 15° Slope (French)
31	532 12 49-96	Clip-Fuel Line	-	532 12 06-63	Sheet, Instruction, Tractor 15° Slope (German)
32	532 10 95-96	Clamp-Hose			

REPAIR PARTS

YARD TRACTOR

CHASSIS AND ENCLOSURES



REPAIR PARTS

YARD TRACTOR

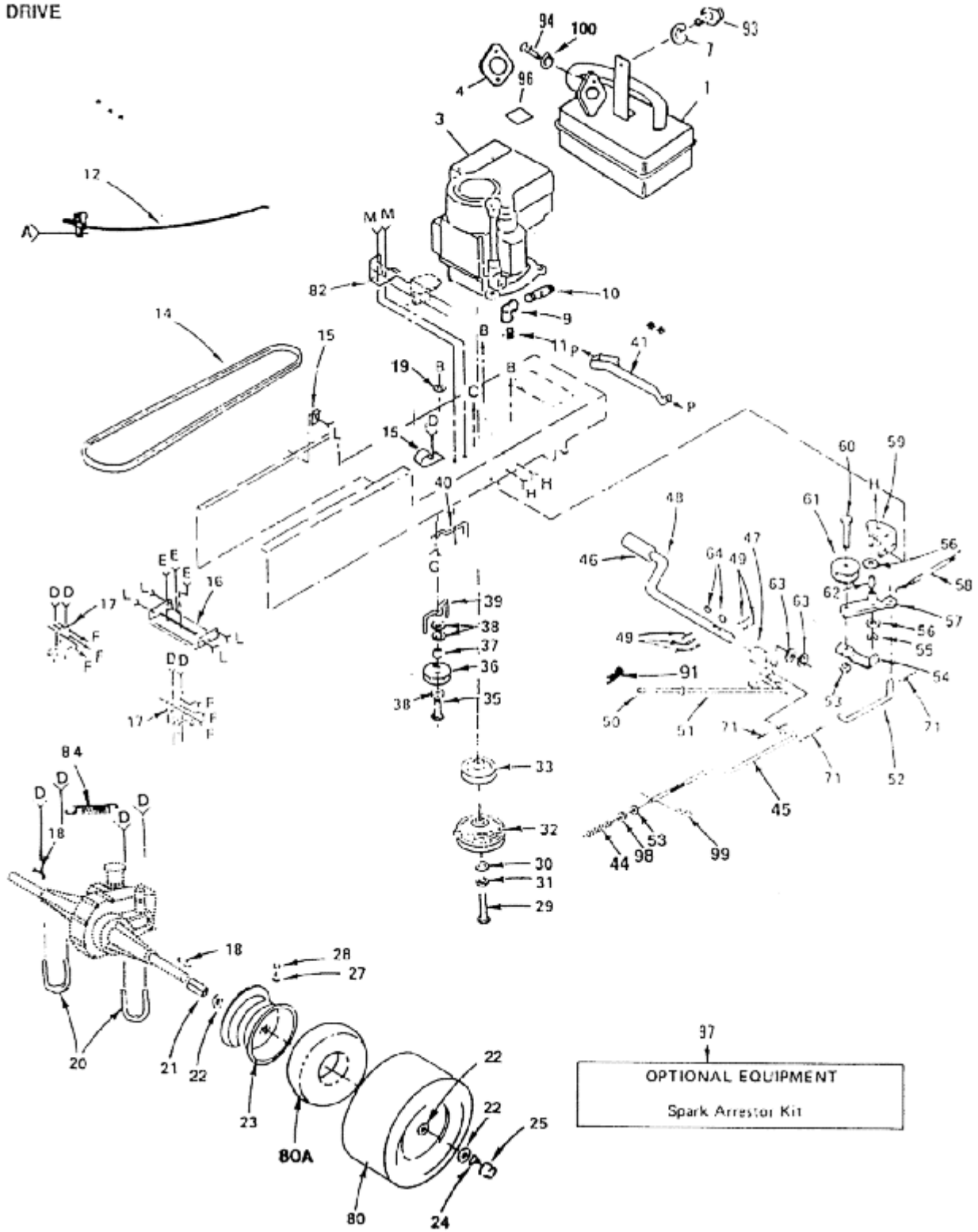
CHASSIS AND ENCLOSURES

KEY NO.	PART NO.	DESCRIPTION	KEY NO.	POT NO.	DESCRIPTION
1	532 12 41-86	Seat	71		Screw -Hex Washer Thread Rolling 3/8 - 16x 1/2
2	532 12 42-94	Pan - Seat			
3	532 10 55-13	Bracket - Pivot, Seat	72		Screw - Hex Washer Thread Rolling 3/8 16x3/4
4	532 12 66-81	Decal - Caution			
5	532 12 16-42	Fender	74	872 14 06-06	Bolt - Carriage 3/8 - 16 x 3/4
6	532 10 62-02	Reflector.Tail Light	75		Screw - Hex See Tapping No.10 - 16 x 1/2
7	532 12 55-84	Decal - Fender			
9	532 10 55-11	Strap - Fender	76		Bolt - Hex 3/8 - 16 x 1
10	532 12 41-81	Spring - Compression.Seat	77	532 12 17-94	Cover - Access
11	532 10 55-31	Nut - Push	79		Washer 9132 x 314 x 16 Ga.
12	532 10 55-09	Bracket - Fender	81		Nut - Hex 1/4 - 20
13	532 00 64-31	Pad - Spacer	82		Bolt - Hex 5/16 - 18 x 2
14	532 12 44-62	Cap- Fuel	83		Nut - Keps 5/16 - 18
15	532 10 60-20	Tank - Fuel	86		Screw - Hex Washer Thread Rolling 5/16- 18 x 3/4
16	532 00 36-45	Bushing			
17	532 00 87-10	Stem -Tank, Fuel	89		Bolt - Lock 1/4 - 20
18	532 12 34-87	Clamp - Hose	90	874 19 10-08	Screw - Pan Hd. Machine No.10-24 1/2
19	863 08 37-30	Line - Fuel	91		Washer- Lock No.10
21	532 12 41-18	Panel - Dash, L.H.	93		Washer 13/32 x 13/16 x 12 Ga.
24	532 10 54-65	Footrest- L.H.	96		Bolt - Hex 3/8 - 16 x 3/4
25	532 12 12-15	Decal - Clutch/Brake	98	532 10 98-08	Latch - Hood
26	532 10 85-92	Decal - Drive Belt	99	873 73 10-00	Nut -Keps 10-24
27	532 10 82-56	Pad - Footrest	100	532 00 72-06	Spacer - Split 10 x 3/4
28	532 12 13-06	Drawbar	101		Washer 7/32 x 1/2 x 18 Ga.
30		Screw - Mach. Cr. Thd. 5/16 - 18 x 3/4	102		Screw - Mach. Cr. Pan 10-24 x 1 -1 /4
31	532 12 12-78	Chassis	104		Washer 11/32 x 11/16 x 16 Ga.
32	532 10 54-64	Footrest - R.H.	106		Washer - Lock 1/4
33	532 11 08-28	Panel - Dash, R.H.	109	532 00 27-51	Clip
34	532 00 41-71	Clip- Insulated	113	532 12 11-44	Bolt - Shoulder 5/16 - 18
35	532 11 04-36	Grommet	114		Washer 15/32 x 1 x 16 Ga.
37	532 12 47-66	Saddle.	116	532 12 12-36	Spacer
38	532 12 47-20	Bushing - Steering	120	532 11 08-53	Bracket Assembly, R.H.
39	532 10 98-20	Decal - Instructions.Caution	121	532 11 08-52	Bracket Assembly, L.H.
40	532 10 48-05	Dash Assembly - Lower	123	532 12 00-68	Adjustment Knob
41	532 12 41-82	Dash	124		Washer 17/32 x 1 -3116 x 12 Ga.
42	532 12 50-04	Nut-Weld	125		Lockwasher 3/8 Ext. Tooth
43	532 12 38-65	Plate - Dash	126		Washer 13/32 x 1 x 14 Ga.
46	532 12 50-09	Panel - Side, L.H.	127		Screw Thrd. Roll 1/4 - 20 x 3/4
47	532 12 55-88	Decal - Side Panel HWTH140	128		Washer 9/32 x 3/4 x 16 Ga.
49	532 12 42-97	Decal- Hood L . H .	129		Lockwasher Ext. Tooth
50	532 10 67-84	Strap Assembly - Hinge, Rear	130	873 49 04-00	Wingnut
51	532 10 46-18	Strap Assembly - Hinge, Front	131		Washer, 1/4 Ext. Tooth
52	532 12 50-07	Hood	132		Washer 11/32 x 3/4 x 12Ga.
53	532 00 54-79	Plug - Button	134	532 12 12-48	Bushing, Snap.80
54	532 12 41-30	Support.Dash	135		Lock Nut, Flange 1/4
55	532 10 69-65	Plate - Support, Battery	136	532 12 12-46	Bracket, Switch Mount
57	532 12 50-08	Panel - Side, R.H.	137	532 12 12-49	Spacer, Split .28 x .88
58	532 12 42-98	Decal - Hood, R.H.	138		Bolt, Carr. 1/4 x 1 1/4
60	532 12 42-50	Lens, L.H.	139	532 12 12-51	Foam Strip
60A	532 12 42-51	Lens, R.H.	140	532 12 12-50	Spring. Compression
61	532 12 42-88	Support - Grill, L.H.	141		Screw, Pan Hd. #10 - 32
62	532 12 45-04	Support, Grill, R. H .	142		Nut, Keps #10
64	532 12 45-73	Grill Assembly	143	532 12 59-47	Decal, Frame
65	532 10 55-29	Bolt-Shoulder5/16- 18	144	532 12 60-36	Decal, Grill Stripe
66		Nut - Lock 5/16 - 18	145	532 12 60-39	Decal, Grill, Husq.
67		Bolt-Hex318-16x3/4	146	532 12 59-89	Decal, Grill, Husq.
70		Nut - Crownlock 3/8 - 16	147	532 12 60-34	Decal, Side Panel
			148	532 12 61-87	Decal, Certification

REPAIR PARTS

YARD TRACTOR

DRIVE



REPAIR PARTS

YARD TRACTOR

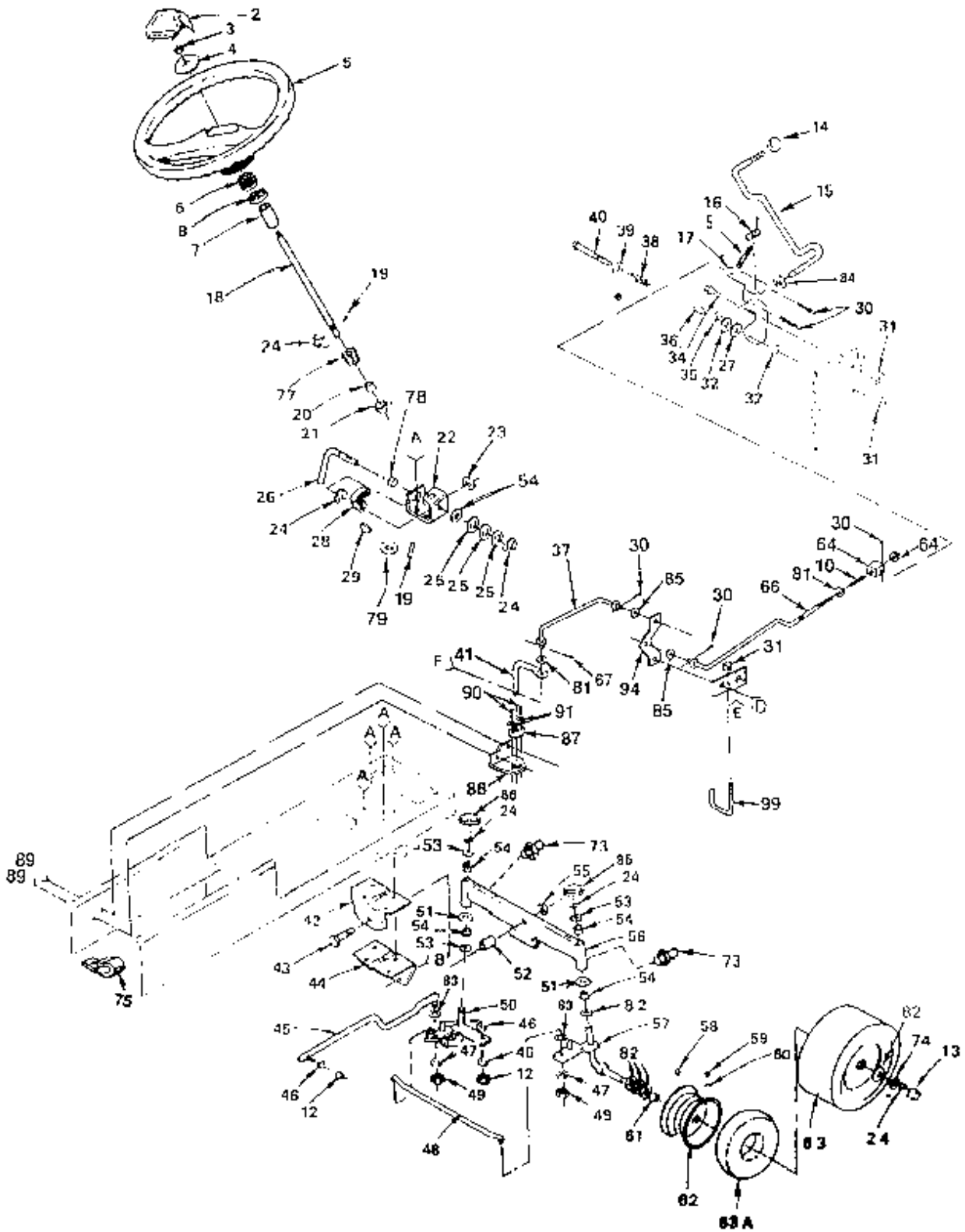
DRIVE

KEY NO.	PART NO.	DESCRIPTION	KEY NO.	PART NO.	DESCRIPTION
1	532 12 57-99	Muffler			
2	532 00 91-51	Grommet	50532	12 42-36	Cap
4	532 00 29-49	Gasket	51	532 12 56-37	Rod, Brake, Park
5	532 10 13-26	Deflector- Exhaust	52	532 10 57-10	Link, Clutch
6		Bolt - Hex 1/4- 20 x 1	53		Nut, Lock, 3/8 16
7		Washer, Lock 1/4	54	532 12 32-05	Retainer, Belt
8		Screw - Hex Hd. No.8 - 32 x 3/8	55	812 00 00-39	Klip Ring
12	532 12 15-27	Control.Throttle/Choke	56	532 11 08-12	Washer, Hardened
14	532 12 34-61	V-8elt, Drive	57	532 12 37-89	Arm.Asm.Idler (Incl. Key No.62)
15	532 12 49-96	Clip	58	532 10 57-09	Spring, Return, Clutch
16	532 12 11-87	Bracket.Mounting.Hydro T/A	59	532 12 31-03	Bracket.Support.Clutch
17	532 12 11-91	Bracket, Transaxle	60		Bolt, Hex,3/8 - 16 x 1-1/2
18	532 12 49-28	Key - Square 1/4 x 2	61	532 12 37-66	Pulley.Idler
19		Nut - Keps 3/8 - 16	62	532 10 57-06	Bearing
20	532 12 11-89	U-Bolt,3/8 - 16 x 2-3/4	63	532 12 17-49	Washer, 25t32x 1-1/4x 16Ga.
21	532 12 11-99	Spacer, Split	64	532 12 50-96	Key, Woodnuff No, 9
22	532 12 17-48	Washer, 1-1/32 x 1-5/8 x 16 Ga,	65		Screw, Hex Thread Cut.1/4 - 20 x 1/2
23	532 10 61-08	Rim- Rear- 8"			
24	812 00 00-01	E-Ring	66		Bolt, Hex Washer Thrd . Rolling 3/8 16x1 -1/2
25	532 12 45-78	Cap.Hub.Rear			
27	532 06 51-39	Stem, Valve	67		Washer - Lock Ext Tooth 3/8
28	532 05 91-92	Cap, Valve	68		Bolt, Hex 3/8 - 16 x 3/4
29	874 61 07-64	Bolt, Hex 7/16 - 20 x 4	69		Bolt,Hex3/8-16x1
30		Washer, 15/32 x 1 - 1/2 x 7/32	70		Bolt, Carr.,3/8- 16 x 3/4
31		Washer, Lock 7/16	71		Pin, Cotter, 1/8 x 3/4
32	532 10 82-18	Clutch - Electric	79		Washer,Lock 3/8
33	532 10 98-41	Pulley - Engine	80	532 10 62-68	Tire - 18 x 9.50 x 8
35		Bolt, Hex 3/8 - 16 x 2-3/4	80A	532 00 71-52	Tube (not furnished with tractor)
36	532 12 36-74	Idler, Flat	82	532 10 82-36	Bracket - Switch
37	532 00 44-70	Spacer	83	817 02 10-08	Screw-Tap. Hex Hd, No.10-24x 1/2 Type T
38		Washer, 13/32 x 13/16 x 12 Ga.			
39	532 10 57-30	Keeper, Belt	84	532 11 04-22	Spring, Brake Return
40	532 12 12-18	Keeper, Belt, Engine, L.H.	88		Washer 9/32 x 5/8 x 16 Ga.
41	532 10 91-69	Clutch Retainer Assembly	89	872 14 05-06	Bolt - Rd. Hd. Sq. Nk.5/16 - 18 x 3/4
42		Pin, Cotter 1/8 x 3/4	90		Nut - Lock 5/16- 18
44	532 10 68-88	Spring - Rod, Brake	91	532 00 49-21	Spring- Retainer
45	532 12 12-00	Rod, Brake	93		Bolt-Hex1/4-20x1
46	532 12 48-72	Cover, Pedal	94		Screw - Hex Hd. Socket 5/16 - 18 x 5/8
47	532 12 23-95	Arm, Brake			
48	532 12 24-09	Shaft, Foot Pedal	95		Screw. Spider Lock #8 x 1/2
49	532 00 15-72	Pin, Roll,3/16 x 1	98		Nut, Hex Jam 3/8 X 16 UNC
			99	532 12 47-88	Clip, Hairpin
			100		Washer Lock 5/16

REPAIR PARTS

YARD TRACTOR

STEERING ASSEMBLY



REPAIR PARTS

YARD TRACTOR

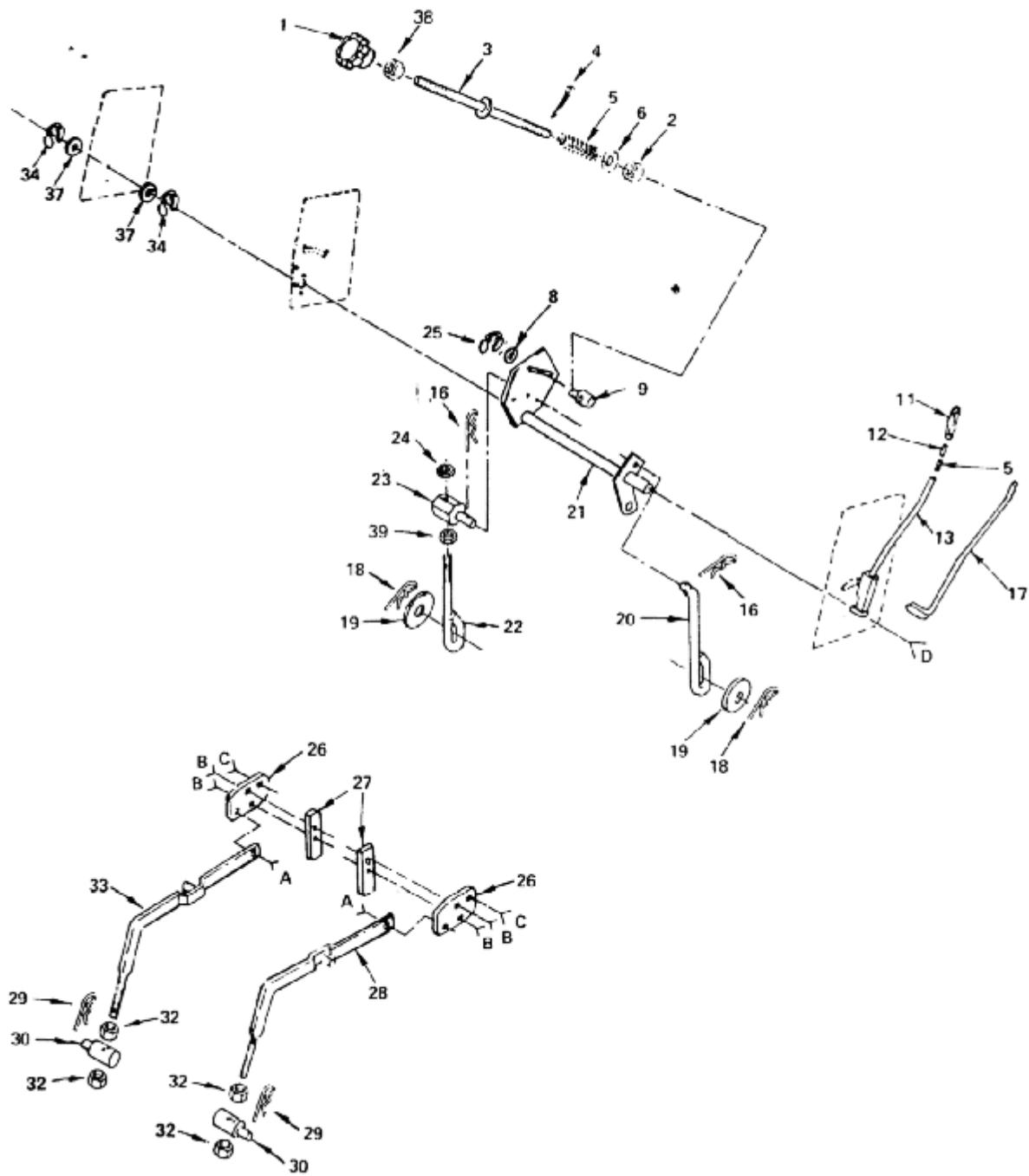
STEERING ASSEMBLY

KEY NO.	PART NO.	DESCRIPTION	KEY NO.	PART NO.	DESCRIPTION
2	532 12 44-16	Insert - Steering Wheel	54	532 00 33-66	Bearing
3		Nut, Hex 3/4 - 16	55		Nut - Lock Flange 5/8-11
4	532 10 07-12	Washer	56	532 10 80-75	Axle. Front
5	532 12 44-15	Wheel Steering	57	532 10 56-54	Spindle - R H
6	532 10 07-11	Adapter - Steering Wheel	58	532 00 02-78	Fitting- Grease
10	532 10 26-70	Spring - Compression	59	532 06 51-39	Stem - Valve
12	873 61 06-00	Nut, Fin Hex 3/8 - 24 UNF	60	532 05 91-92	Cap - Valve
13	532 12 45-77	Cap- Hub- Front	61	532 00 90-40	Bearing
14	532 12 12-74	Knob.Gear Shift	62	532 10 67-32	Rim 6" Front
15	532 11 08-45	Rod - Control	63	532 10 62-22	Tire- Front
16	532 12 16-31	Spring - Torsion	63A	532 05 99-04	Tube Tire Front (not furnished with tractor)
17	532 10 81-96	Bracket - Control Rod	64		Nut - Hex Jam 3/8 - 16
18	532 10 95-57	Shaft - Steering	65	532 10 82-12	Trunnion
19	532 00 28-82	Pin - Drive 3/16 x 1	66	532 12 17-50	Rod - Adjustable Control
20	532 07 45-80	Spacer	67	532 00 44-97	Clip, Hairpin
21	532 07 12-08	Bushing	69		Bolt-Hex318-16x1-1/2
22	532 10 94-32	Bracket - Steering	70		Screw- HexWasherThread Rolling 318- 16x3/4
23		Washer 21/32 x 1 - 1/4 x 16 Ga.	71		Screw - Hex Washer Thread Rolling 5/16 - 18 x 1/2
24	812 00 00-29	Klip Ring	73	532 00 68-55	Fitting - Grease
25	532 00 62-66	Bearing = Thnust	74	532 12 17-48	Washer 25/32 x 1 - 5/8 x 16 Ga.
26	532 10 86-83	Rod - Steering	75	532 00 53-20	Clip-Insulated
27	532 10 89-72	Washer- Phenolic	77	532 10 86-85	Gear- Pinion
28	532 10 86-84	Gear - Sector	78	532 10 98-16	Nyliner, Snap- In
29	532 10 61-26	Key-Woodruff	79	532 10 19-30	Washer- Hardened
30		Pin - Cotter 1/8 x 3/4	80		Washer 13/32 x 13/16 x 16 ga.
31		Nut - Lock 3/8 - 16	81		Washer13/32x3/4x12Ga.
32	532 10 82-00	Washer- Friction	82	532 12 17-49	Washer 25/32 x 1 1/4 x 16 Ga.
33		Washer 13/32 x 13/16 x 12 Ga.	83		Washer11/32x3/4x16Ga.
34	532 10 85-18	Bolt - Hex Shoulder 3/8 - 16 x 1 - 3/8	84		Washer 15/32 x 15/16 x 16 Ga.
35		Washer 21/32 x 1 - 1/4 x 16 Ga.	85	532 11 07-39	Washer, Spring
36	532 10 82-01	Spacer	86	532 12 12-32	Spindle.cap.
37	532 12 12-02	Link - Control	87	532 12 12-17	Guide. Control
38	532 10 88-44	Spring - Compression	88	532 12 12-16	Bracket, Control Guide
39		Washer 13/32x 1 - 1/4x 12Ga.	89		Screw, Hex Washer ThdRol 5/16 - 18 x 3/4 TYTT
40		Bo1t- Hex3/8 - 16x3	90	817 02 10-08	Screw, Tap Hex Hd. #10 - 24 UNC x 1/2TY-T
41	532 12 12-09	Lever - Pump Control	91		Washer7/32 x 1/2 x 16 Ga.
42	532 10 56-63	Support - Saddle - Rear	92	871 01 10-12	Bolt,10-24x3/4
43		Bolt Hex 5/8 - 11 x 3 -3/4	93	873 66 10-00	Nut,10-24
44	532 10 56-64	Support. Saddle. Front	94	532 12 12-04	Bellcrank
45	532 10 57-27	Link Drag	95	532 12 12-06	Bracket, Bellcrank Pivot
46		Lockwasher 3/8	96	532 10 05-36	Bolt, Shoulder
47		Washer - Lock 5/16	97		Bolt, Fin Hex 3/8 UNC - 16 x 3/4
48	532 12 13-34	Rod-Tie	98		Nut - Lock 5/16 - 18
49	873 81 05-00	Nut- Hex 5/16- 24	99	532 12 11-90	Keeper, Centerspan
50	532 10 56-56	Spindle L.H.			
51		Washer 27/32 x 1 - 1/4 x 16 Ga.			
52	532 11 04-38	Spacer			
53	532 12 49-31	Hardened Washer			

REPAIR PARTS

YARD TRACTOR

LIFT ADJUSTMENT



REPAIR PARTS

YARD TRACTOR

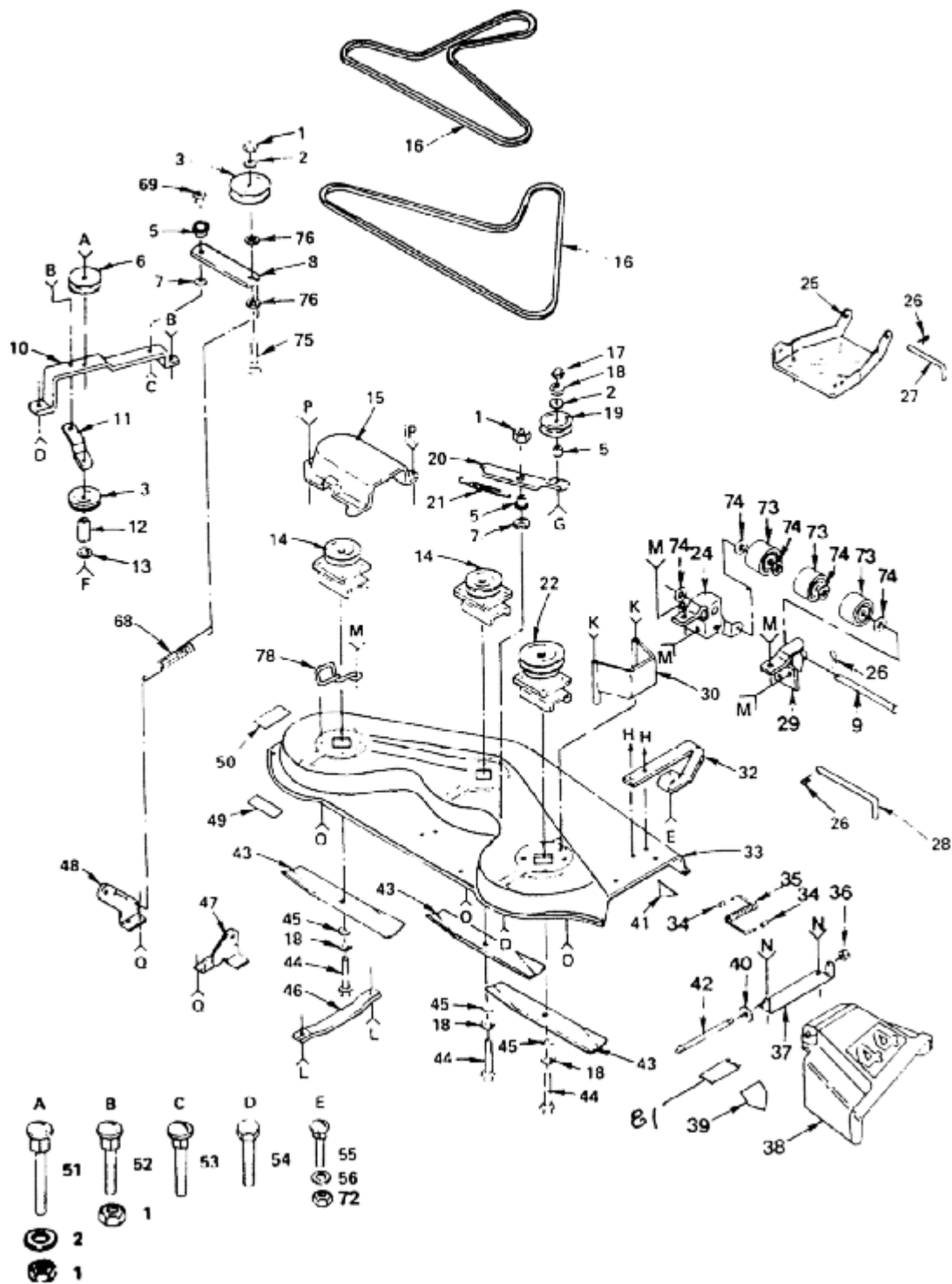
LIFT ADJUSTMENT

KEY NO.	PART NO.	DESCRIPTION	KEY NO.	PART NO.	DESCRIPTION
1	532 12 18-91	Knob, Depth Adjustment	21	532 12 45-17	Shaft- Lift
2		Nut - Hex 3/8 - 16	22	532 11 04-48	Link Lift - Adjust
3	532 11 07-29	Rod - Adjust - Lid	23	532 11 04-47	Trunnion - Lid
4		Pin-Cotter 3/32 x 1/2	24		Nut - Lock 7/16- 14
5	532 12 48-74	Spring	25	812 00 00-37	Klip Ring
6		Washer 13/32 x 5/8 x 16 Ga.	26	532 10 58-64	Bracket - Suspension
7		Nut - Lock 3/8- 16	28	532 12 15-98	Arm- Suspension R.H.
8		Washer15/32x3/4x 16Ga.	29	532 00 91-35	Retainer- Spring
9	532 11 08-10	Trunnion	30	532 10 63-08	Lift- Lower
10	532 10 58-48	Bob - Shoulder 3/8 - 16	32		Nut- Hex Fin.1/2- 13
11	532 10 94-13	Grip Handle	33	532 12 15-99	Arm - Suspension - L.H.
12	532 12 23-64	Plunger- Lever	34	812 00 00-22	E - Ring
13	532 12 10-02	Lever- Lift (Includes Key No.17)	36	872 14 06-06	Bolt- Canriage 3/8- 16 x 3/4
14	532 11 07-39	Spring Washer	37		Washer 29/32 x 1 - 1/4 x 16 Ga.
15		Center Lock Flange Nut 3/8 x 16	38	532 11 08-07	Nut - Special
16	532 12 46-70	Retainer - Spring	39		Nut, Hex Jam 3/8 x 16 UNC
17	532 12 10-06	Rod- Lever	40		Bolt - Hex 3/8 - 16 x 1 - 1/2
18	532 00 49-21	Retainer Spring	41	532 12 45-26	Button.Plunger
19		Washer 17/32 x 15/16 x 16 Ga.	42	532 12 39-34	Scale.Height.Indicator
20	532 11 00-29	Link - Lift	43	532 12 47-63	Pointer.Height.Indicator

REPAIR PARTS

YARD TRACTOR

MOWER



REPAIR PARTS

YARD TRACTOR

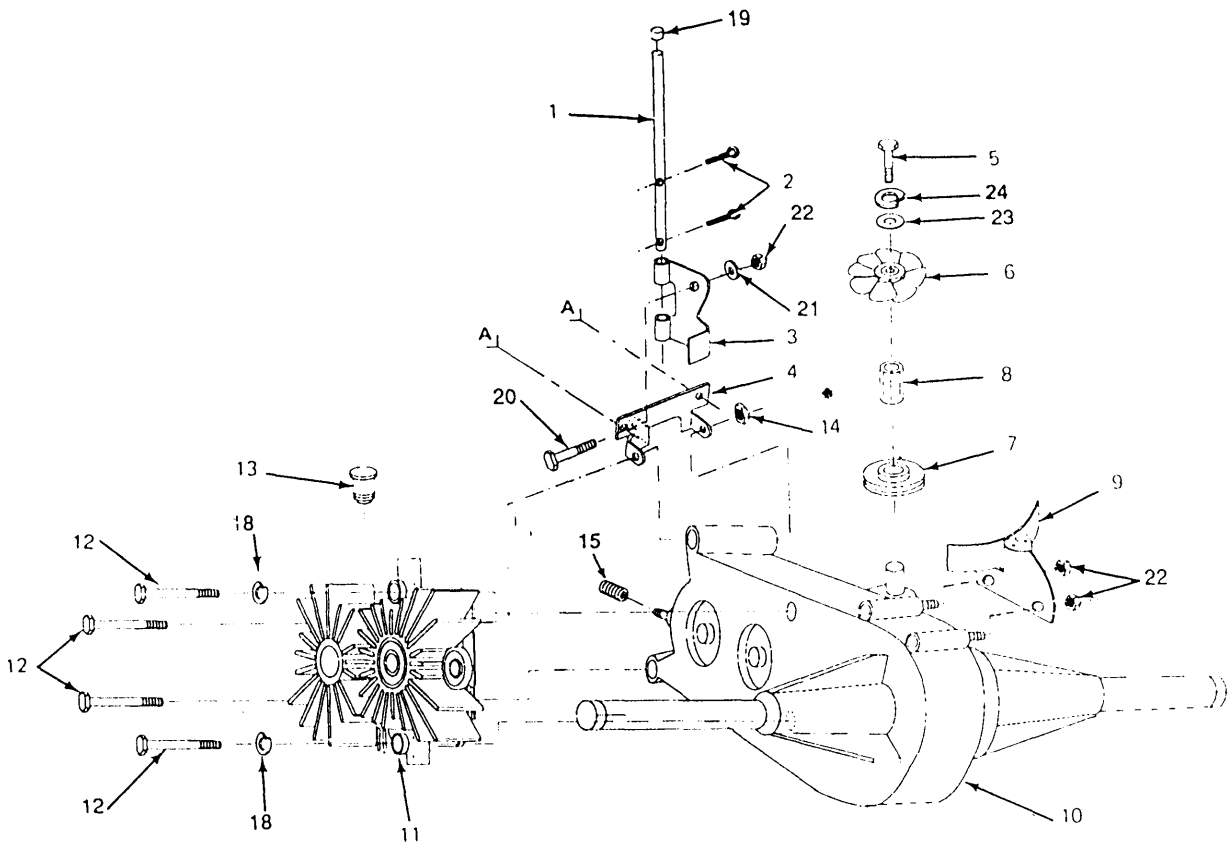
MOWER

KEY PART NO. NO.	DESCRIPTION	KEY PART NO. NO.	DESCRIPTION
1	Nut, Lock 3/8-16	41 532 12 61-94	Decal, Caution, Deflector
2	Washer, 13/32 x 1 x 14 Ga.	42 532 10 67-35	Rod, Hinge
3 532 12 13-16	Pulley, Idler	43 532 12 22-65	Blade, Mower, Low, Lift
5 532 10 69-02	Spacer	44	Bolt, Hex, 3/8-24 x 1-1/2 Gr.5
6 532 12 48-58	Pulley, Idler, Inside	45	Washer, 13/32x1-1/4x12Ga.
7 532 10 65-13	Washer, Wear	46 532 12 50-74	Runner, L.H.
8 532 12 14-25	Arm, Idler	47 532 12 38-07	Bracket, Suspension, Rear, R.H.
9 532 10 97-76	Pin, Pivot	48 532 12 38-08	Bracket, Suspension, Rear, L.H.
10 532 10 65-23	Bar, Support, Idler	49 532 10 85-92	Decal, V-Belt, Schematic
11 532 10 65-22	Brace, Idler, Deck	50 532 10 51-85	Instruction, Caution Decal
12 532 12 12-36	Spacer	51 872 14 06-08	Bolt, Carriage 3/8-16UNC x 1/2
13	Washer, 13/32 x 13/16 x 16 Ga	52	Bolt, Hex Fin. 3/8-16UNC x 1
14 532 12 16-58	Mandrel, Secondary	53	Bolt, Carriage 3/8-16UNC x 1-1/2
15 532 10 62-14	Guard	54	Bolt, Hex 3/8-16 x 1 -1/4
16 532 10 60-85	V-Belt	55 872 14 05-06	Bolt, Carriage 5/16-18 x 3/4
17	Nut, Hex 3/8-16	56	Washer, 11/32 x 11/16 x 16 Ga.
18	Washer, Lock, 3/8	57	Nut, Lock 5/16-18
19 532 10 29-32	Idler, Flat	58	Bolt, Hex 3/8-16 x 3
20 532 10 65-26	Arm, Idler, Deck	59	Screw, Flat Head 3/8-16 x 2
21 532 12 48-85	Spring, Extension	61	Washer, 11/32 x 3/4 x 16 Ga
22 532 12 17-05	Mandrel, Primary	62	Bolt, Hex, 5/16-18 x 5
24 532 10 95-99	Bracket, Lift, L.H.	65 872 14 05-06	Bolt, Carr., 5/16-18 x 5/8 UNC x 3/4
25 532 10 56-62	Link, Parallel	66	Screw, Hex Wsh. Thdrl. 3/8-16 x 3/4
26 532 00 49-21	Retainer, Spring	67 872 14 06-06	Bolt, Carriage 3/8-16 x 3/8
27 532 10 57-44	Pin, Front Hinge	68 532 10 27-27	Spring, Extension
28 532 10 98-35	Pin, Rear Hinge	69	Nut, Centerlock 3/8-16
29 532 10 96-00	Bracket, Lift, R.H.	70	Bolt, Carriage 5/16-18 x 3/8
30 532 10 81-19	Guard, Belt, R.H.	72 532 12 49-49	Nut, Lock 5/16-18
32 532 12 49-50	Runner, R,H,	73 532 10 97-29	Roller, Nose
33 532 12 14-23	Housing, Mower	74	Washer, 15/32 x 1 x 10 Ga.
34 532 10 53-04	Cap, Sleeve	75 872 14 06-20	Bolt, Carriage, 3/8-16 x 2-1/2
35 532 10 67-34	Spring	76	Washer, 13/32 x 3/4 x 10 Ga.
36 532 11 04-52	Nut, Push	77	Washer, 13/32 x 7/8 x 10 Ga.
37 532 10 97-43	Bracket, Deflector	78 532 12 13-52	Keeper, L.H. Mandrel
38 532 10 97-85	Guard, Carriage	80 532 12 61-91	Decal, Warning, Swe., Nor., Fin.
39 532 12 61-92	Decal, Danger	81 532 12 61-96	Decal, Caution, Knife
40	Washer, 11/32x5/8 x 16Ga.		

REPAIR PARTS

YARD TRACTOR

TRANSAXLE AND PUMP ASSEMBLY



**KEY PART
NO. NO.**

DESCRIPTION

**KEY PART
NO. NO.**

DESCRIPTION

1	532 12 11-92	Rod, Free WheelContro}
2		Pin, Cotter 3/32 x 3/4
3	532 12 11-93	Control, Coast
4	532 12 11-88	Bracket, Pnt. Mounting Differen
		tial
5		Bolt, Hex Hd.1/4" - 20 UNC x 3/4
6	532 12 11-86	Fan, Hydro 8"
7	532 12 11-80	Pulley, Transaxle
8	532 12 12-11	Standoff, Fan Hydro
9	532 12 11-82	Guard Assembly, Belt
10		Differential Assembly (See
		pages 44 & 45)
11		Pump Assembly (See page 43)

12		Bolt, Hex Fin. 5/16- 18 UNC x 4.5
13	532 12 13-23	Reservoir Pump
14		Nut, Crown Lock 5/16 - 18
15	532 12 12-50	Spring, Compression
16		Bolt, 3/8 - 16 x 3/4
17		Nut 3/8 - 16 UNC
18		Lockwasher
19	532 12 42-36	Cap
20	532 12 48-15	Bolt shoulder 1/4 - 20 UNC
21	532 12 05-29	Washer, nylon
22		Nut, Crown lock 1/4 - 20 UNC
23		Washer 9/32 x 1 - 1/4 x 16 ga .
24		Lockwasher, 1/4

A

