

LT960-12.5



1.1990

Spare parts

Ersatzteile

Pièces détachées

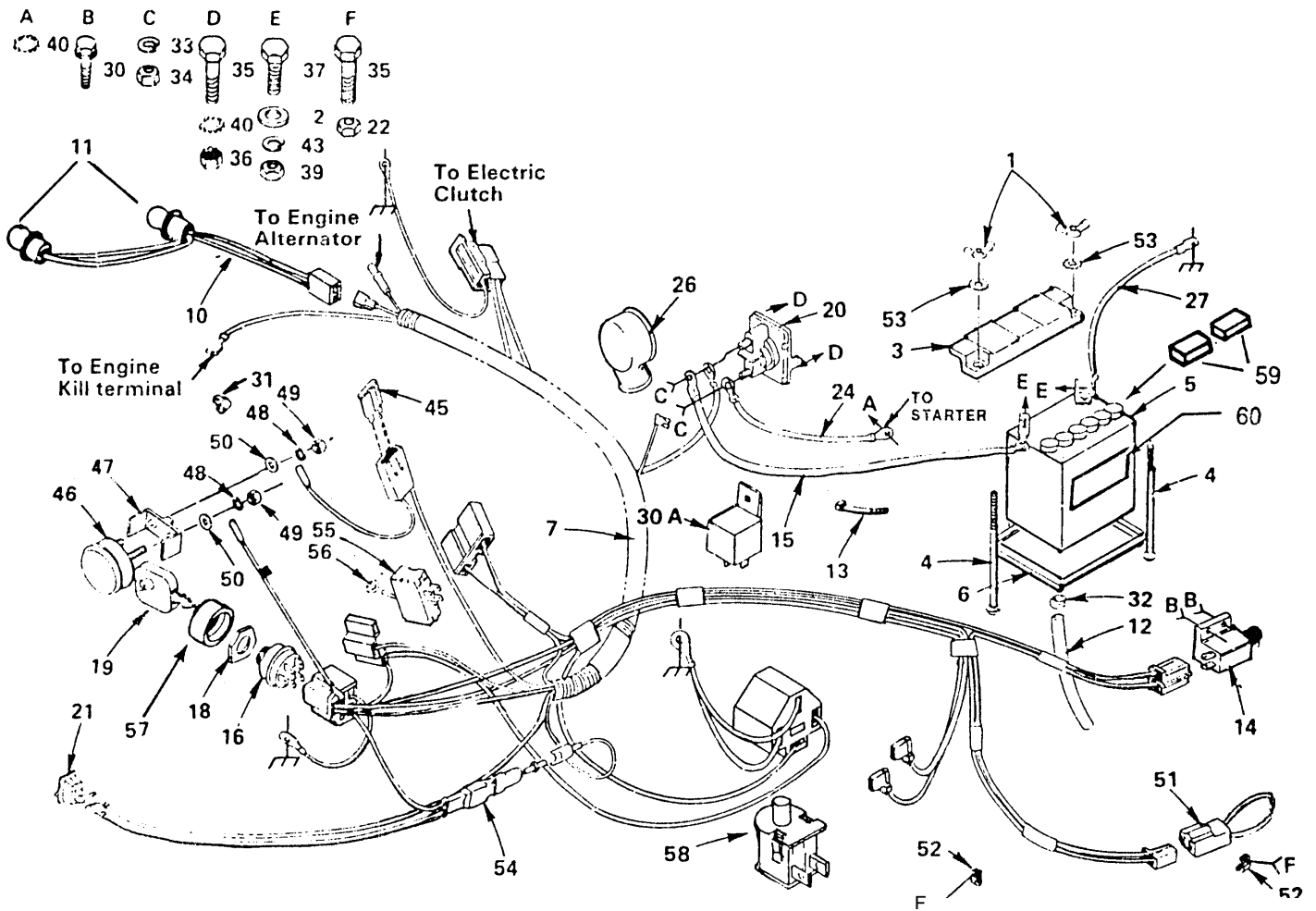
Reserve onderdelen

Repuestos

Reservdelar

REPAIR PARTS

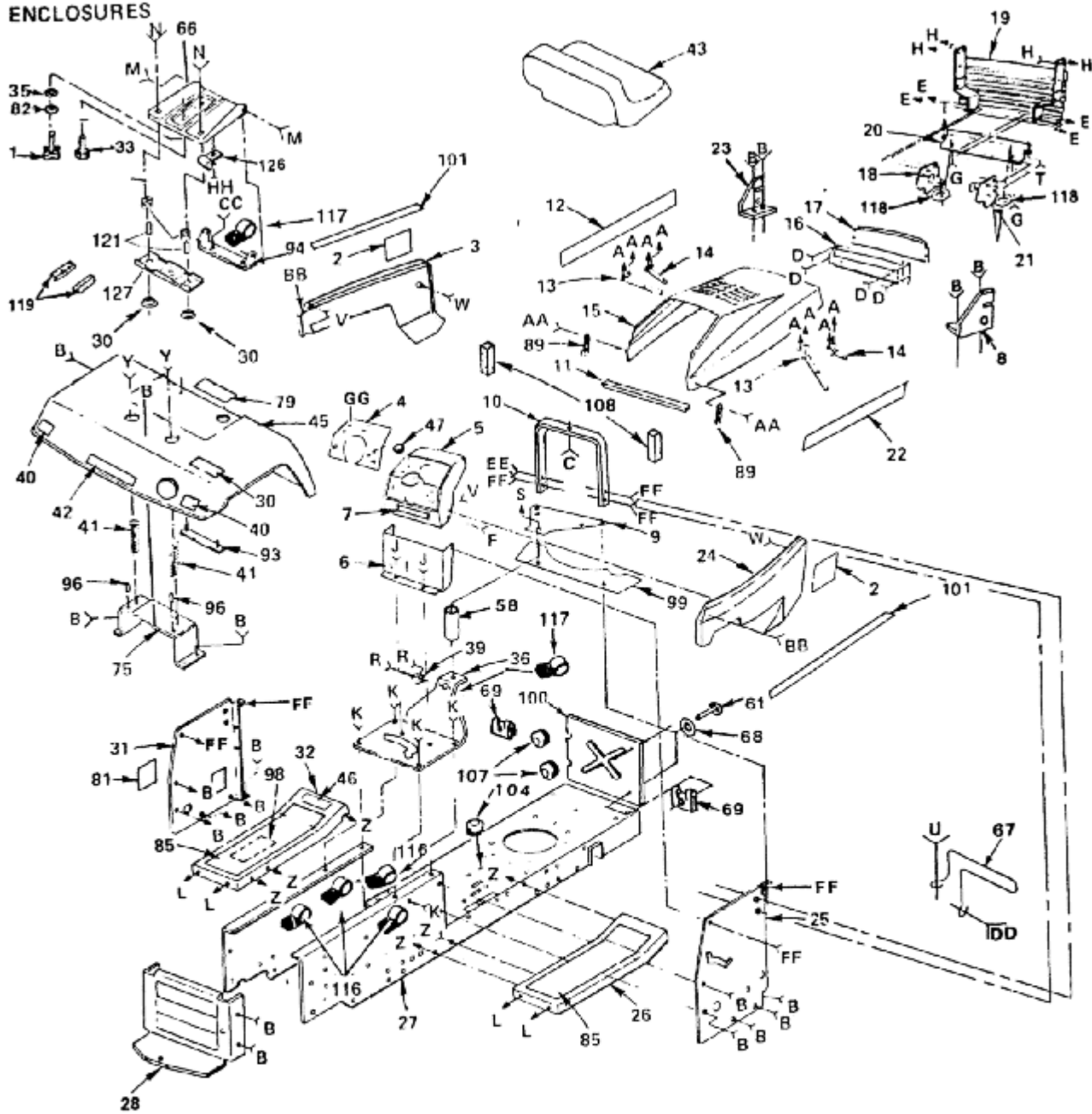
ELECTRICAL



KEY NO.	PART NO.	DESCRIPTION
1	532 12 31-98	Wing Nut 1/4-20
2		Washer 9/32 x 5/8 x 16 Ga
3	532 10 24-76	Guard-Terminal
4		Battery Bolt (Bolt-Carriage, Rd. Hd. Sq. Neck 1/4 20 x 7-1J21
5	532 12 15-37	Battery
6	532 12 48-86	Battery Tray
7	532 12 38-27	Harness - Ignition (includes item 30 A)
10	532 11 08-59	Harness-light Socket
11	532 12 48-93	13ulb-Light
12	532 10 05-41	Tube-Battery Tray
13	532 12 47-56	Cable Tie
14	532 10 44-45	Switch - Interlock - Clutch
16	532 12 45-03	Cable-Battery (Battery to Solenoid)
18	532 10 29-72	Ignition Switch
19	532 10 97-88	Nut - Ignition
20	532 12 21-47	Key
21	532 10 90-01	Solenoid
22	532 11 07-12	Switch-Light
24		Nut-Crownlock 1/4-20
26	532 12 47-80	Cable - Battery (Solenoid to Starter)
27	532 12 47-83	Terminal Cover (For Solenoid)
30	532 12 47-70	Cable-Battery (Battery to Ground)
30A		Screw-Tap. HEX Hd. No.10-24IINC Relay
31	532 10 97-48	Clip-Fuel Line

KEY NO.	PART NO.	DESCRIPTION
32	532 10 95-96	Clam-Hose
33		Lockwasher 1/4
34		Nut-Hex Jam 1/4-20
35		Bolt-Hex 1/4-20 x 112 Gr. 5
36		Nut- Keps, Hex 1/4-20
37		Bolt-Hex 1/4-20 x 314
39		Nut-Hex 1/4-20
40		Washer-Lock 1/4 Ext. Tooth
43		Lockwasher 114
45	532 10 88-24	Fuse-30 Amp.
46	532 12 49-00	Ammeter
47	532 12 49-01	Bracket-Ammeter
48		Lockwasher NO. 1U
49		Nut
50		Washer 7/32 x 1/2 x 18 Ga.
51	532 10 25-01	Loop-Wire Tiller Attachment
52	532 12 49-95	Clip- Insulated
53		Lockwasher - Int/Ext. Tooth, 1/4
54	532 10 63-15	Diode Assembly
55	532 12 60-16	Switch PTO
56	532 12 49-32	Nut-Hex
57	532 10 97-87	Bezel, Ignition
58	532 12 13-05	Switch, Plunger
59	532 12 12-64	Caps, Battery Set
60	532 12 15-49	Decal - Battery

ENCLOSURES

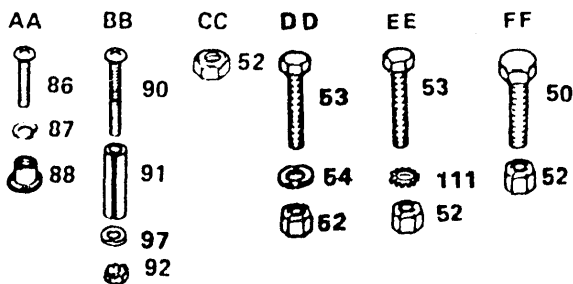


A	B	C	D	E	F	G	H	J	K	L	M	N	P	O	R	S	T	V

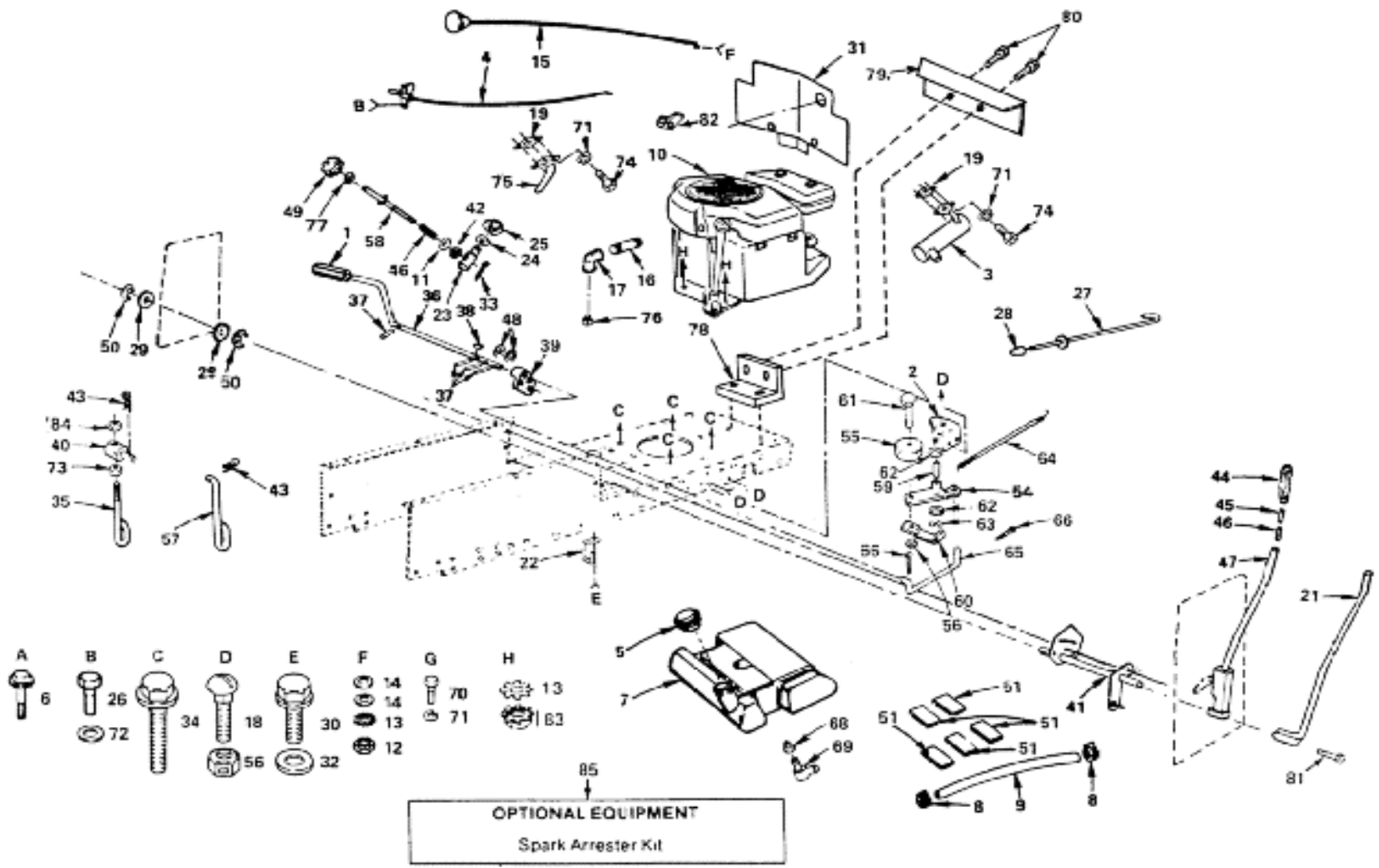
NCLOSURES

KEY NO.	PART NO.	DESCRIPTION
1	532 12 00-68	Adjustment Knob
2	532 12 60-35	Decal - Side Panel
2a	532 12 55-86	Decal- Side Panel, RH
3	532 12 48-45	Panel - Side, L.H.
4	532 12 47-21	Dash Plate
5	532 12 41-82	Dashboard
6	532 12 48-46	Dash Assembly - Lower
7	532 10 98-21	Decal - Instruction
8	532 11 08-53	Bracket Assembly R.H.
9	532 10 69-65	Plate - Support, Battery
10	532 12 41-30	Support Assembly - Dash
11	532 12 12-51	Foam Strip
12	532 12 42-97	Decal - Hood, L.H.
13	532 10 67-84	Strap Assembly - Hinge, Rear
14	532 10 46-18	Strap Assembly - Hinge, Front
15	532 12 50-07	Hood
16	532 10 46-13	Bezel Assembly
17	532 10 63-95	Lens
18	532 11 08-55	Support- Grill, L.H.
19	532 12 66-89	Grill Assembly
20	532 10 54-19	Strap - Grill
21	532 11 08-54	Support-Grill, R.H.
22	532 12 42-98	Decal - Hood, R.H.
23	532 11 08-52	Bracket Assembly L.H.
24	532 12 48-47	Panel - Side, R.H.
25	532 11 08-28	Panel - Dash, R.H.
26	532 10 54-64	Footrest- R.H.
27	532 12 12-77	Chassis
28	532 12 13-06	Drabber
30	532 12 12-48	gushing Snap
31	532 12 48-50	Panel - Dash, L.H.
32	532 10 54-65	Footrest- L.H
33	532 12 11-44	Shoulder Bolt
34		Locknut - Gripco, 5/16-18
35		Washer 15/32 x 1 x 16 Ga.
36	532 12 48-48	Saddle
37		Lock Washer 1/4 Int./Ext.
39	532 12 47-20	Bushing - Steering
40	532 10 62-02	Reflector - Tail light
41	532 12 41-81	Spring - Compression
42	532 12 55-84	Decal- Fender
43	532 12 41-86	Seat
44	872 17 04-10	Bolt, Roundhead 1/4 - 20 x 11/4
45	532 12 47-49	Fender
46	532 12 66-77	Decal - Clutch/brake
47	532 00 54-79	Plug - Button
48		Washer- Lock 1/4
49	873 45 04-00	Wing Nut 1/4 - 20
50		Bolt - Hex 3/8 - 16 x 3/4
51		Washer 13/32 x 13/16 x 12 Ga.
52		Nut- Crownlock 3/8 - 16
53		Bolt- Hex 3/8 - 16 x 1
4		Washer 13/32 X 1 X 16 Ga.
55	817 21 10-10	Screw- Hex Washer Hd. Tapping 10 - 16 x 5/8
56	532 10 47-55	A" Fastener

KEY NO.	PART NO.	DESCRIPTION
57		Screw - Hex Washer Hd. Thd. Rolling 3/8 -16 x 3/4 Type TT
58	532 12 12-36	Spacer
59		Screw - Hex Washer Hd. Thd. Rolling 5/1-18 x 3/4 Type TT
60	532 12 48-15	Bolt - Shoulder 1/4-20
61	532 10 57-51	Stud 1/4 Turn
62		Nut - Crownlock 1/4 - 20
63		Bolt- Hex 3/8 -16 x 1-1/4
64		Nut- Keps 3/8-16
65		Screw - Hex Washer Hd. Thd. Forming - 3/8 -16 x 1/2 Type 11
66	532 12 48-49	Pan - Seat
67	532 10 88-85	Muffler Guard
68	532 10 58-38	Retainer- 1/4 Turn
69	532 10 58-39	Receptacle- 1/4Turn
70		Washer- Lock, 3/8
72	817 43 10-08	Screw - Hex Head Self Tapping, No. 10 -16 x 1/2 Type B
73		Bolt-Hex 5/16-18 x 2 Gr 2
74		Nut- Keps 5/16-18
75	532 10 55-09	Bracket Assembly - Fender
76		Screw - Mach. 5/16-18 x 3/4
78		Screw-Hex Washer Hd. 1/4-20 x 3/4
79	532 12 08-22	Decal - OPEI, Caution
81	532 12 17-94	Cover - Access
82		Washer- 17/32 x 1-1116 x 20 Gal.
83		Washer 13/32 x 3/4 x 12 Ga.
84	872 14 06-06	Bolt - Carriage 3/8 - 16 x 3/4
85	532 12 12-51	Pad - Footrest
86	874 19 10-08	Screw - Cross Recess Pan Hd. Machine 10-24 x 1/2
87		Washer-Lock, No 10
88	532 12 50-04	Nut - Weld
89	532 10 98-08	Latch- Hood
90	874 98 10-20	Screw - Machine Cross Recess 10 - 24 x 1-1/4
91	532 00 72-06	Spacer- Split 10 x 3/4
92	873 73 10-00	Nut- Keps 10-24
93	532 10 55-11	Strap Assembly - Fender
94	532 10 55-13	Bracket - Pivot, Seat
95	532 10 55-29	Bolt - Shoulder 5/16-18
96	532 10 55-31	Nut- Push
97		Washer 7/32 x 1/2 x 18 Ga .
98	532 10 91-99	Decal - i-Belt Drive, Schematic, Tractor
99	532 10 97-40	Baffle-Roar, Upper
100	532 10 81-05	Baffle-Rear, Lower
101	532 12 15-89	Decal-Strip
103		Washer 13/32 x 1 x 14 Ga.
104	532 12 49-34	Grommet
105		Screw - Hex Washer Hd., Thd. Rolling 3/8-1 6x 1
106		Washer- Lock 1/4
107	532 11 04-36	Grommet
108	532 12 12-51	Foam Strip
109		Lock Washer 114 Int. Ext.
100	873 49 04-00	Wing Nut 1/4-20
111		Lock Washer 3/8 Ext. Tooth
112		Washer 9/32 x 3/4 x 16 Ga
113		Nut- Hex 1/4 - 20
115		Washer 11/32 x 11/16 x 16 Ga.
116	532 00 53-20	Clip- Insulated
117	532 12 49-66	Clip - Insulated
118		Washer - 11/32 x 3/4 x 12 Ga
119	532 12 12-51	Foam Strip
120		Washer-11/32 x3/4 x16 Ga.
121	532 12 12-49	Spacer Split - 0.28 x 0.88
122	532 12 12-50	Spring - Compression
123	532 12 39-76	Nut- Hex, Flanged 1/4-20 UNC
124		Screw - Slotted Pan Head, #10-32 x 1/2
125	873 95 10-00	Nut- Keps, #10-32 UNF
126	532 00 41-71	Clip- Insulated
127	532 12 12-46	Bracket- Switch Mount



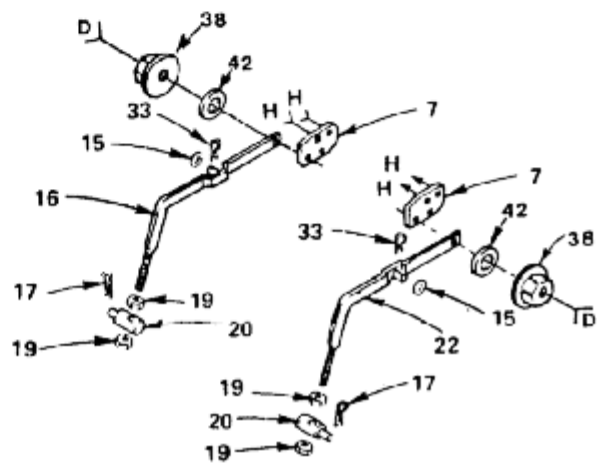
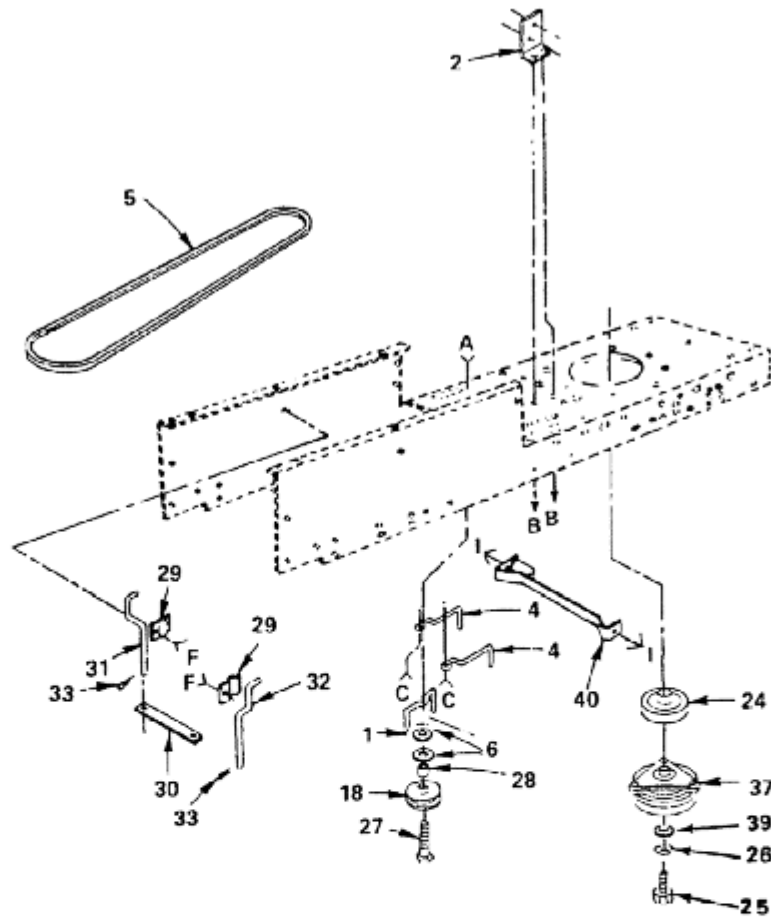
POWER & MECHANICAL CONTROLS GROUP



POWER & MECHANICAL CONTROLS GROUP

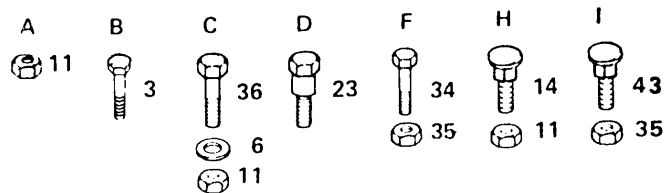
KEY PART NO. NO.	DESCRIPTION	KEY PART NO. NO.	DESCRIPTION
1 532 12 48-72	Pedal Cover	44 532 10 94-13	Grip- Handle
2 532 12 31-02	Bracket Assembly - Clutch	45 532 12 23-64	Plunger- Lever, Hand
3 532 12 57-99	Muffler	45 532 12 45-26	Button - Plunger
4 532 12 40-55	Control, Throttle/Choke	46 532 12 48-74	Spring
5 532 12 44-62	Fuel Cap Assembly	47 532 12 10-02	Lever Assembly, Hand Kit (Include Key No. 21)
6 817 02 08-06	Screw - Hex Hd. Thd. Cutting 8-32 x 3/8, Type T	48	Washer 21/32 x 1 x 16 Ga.
7 532 10 60-20	Tank-Fuel	49 532 12 18-91	Handle - Adjust, Lift
8 532 12 34-87	Hose Clamp	50 812 00 00-22	E-Ring
9 532 00 52-77	Fuel Line	51 532 00 64-31	Pad - Spacer
10 532 40 07-07	Engine 14 HP, Type No. 1211-01	54 532 12 37-89	Bellcrank Assembly
11	Washer 13/32 x 5/8 x 16 Ga.	55 532 12 37-66	Pulley- Idler
16	Std. Pipe Nipple	56	Locknut 3/8 - 16
17	90 Elbow 3/8 NPT	57 532 11 00-29	Link - Lift
18 872 14 06-06	Bolt Rd. Hd Sq. Neck 3/8 16 x 3/4	58 532 11 07-29	Rod-Adjust, Lift
19 532 00 85-45	Gasket, Muffler	59 532 10 57-06	Bearing
21 532 12 10-06	Rod Assembly - Lever	60 532 12 32-05	Retainer Belt
22 532 10 47-77	Retainer. Belt, Chassis, L.H.	61	Bolt - Hex 3/8 - 16 x 1-1/2
23 532 11 08-10	Trunnion - Stop, Depth	62 532 11 08-12	Washer- Hardened
24	Washer t5/32 x 3/4 x 16 Ga.	63 812 00 00-39	Ring- Klip
25 812 00 00-37	Klip Ring	64 532 10 57-09	Spring- Return, Clutch
26	Screw- Hex Washer Hd Thd. Cutting 1/4-20 x 1/2	65 532 10 57-10	Link- Clutch
27 532 10 58-44	Rod- Brake, Park	66	Pin- Cotter 1/8 x 3/4
28 532 07 16-73	Plunger Cap	68 532 00 36-45	Bushing
29	Washer 29/32 x 1 - 1/4 x 16 Ga	69 532 00 87-10	Stem-Tank, Fuel
30	Screw - Hex Washer Thd Rolling 3/8- 1 6 x 3/4	70	Bolt - Hex 1/4 - 20 x 1/2
31 532 10 49-17	Baffle . Vertical	71	Lockwasher 1/4
32	Washer 13/32 x 13/16 x 12 Ga.	73	Nut Hex Jam 7/16 - 20
33	Cotter Pin 3/32 x 1/2	74	Bolt - Hex 1/4 - 20 x 1/4
34 532 12 50-05	Screw - Hex Washer Hd. Thd. Rolling 3/8-16 x 1-1/4TypeTT	75 532 10 02-29	Tube Assembly - Exhaust
35 532 11 04-48	Lift Link - Adjustable	76 532 09 10-84	Plug - Oil Drain
36 532 12 24-24	Shaft Pedal Foot	77	Nut - Hex Jam 3/8 - 16
37 532 00 15-72	Roll Pin 3/16 x 1	78 532 11 00-13	Bracket - Heat Shield
39 532 12 01-83	Bearing, Nylon	79 532 11 00-12	Heat Shield
40 532 11 04-47	Trunnion, Lift	80	Bolt - Hex Thread Cutting 5/16 - 18 x 1/2
41 532 12 45-16	Shaft Assembly- Lift	81	Bolt,Hex Hd. 3/8 - 16 x 1-1/2
42 532 11 08-07	Nut - Hex Special	82 532 00 53-20	Clip,Insulated
43 532 12 46-70	Retainer Spring	83	Nut,Keps 3/8 - 16
		84	Nut,Crownlock 7/16-20

DRIVE GROUP

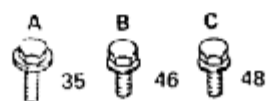
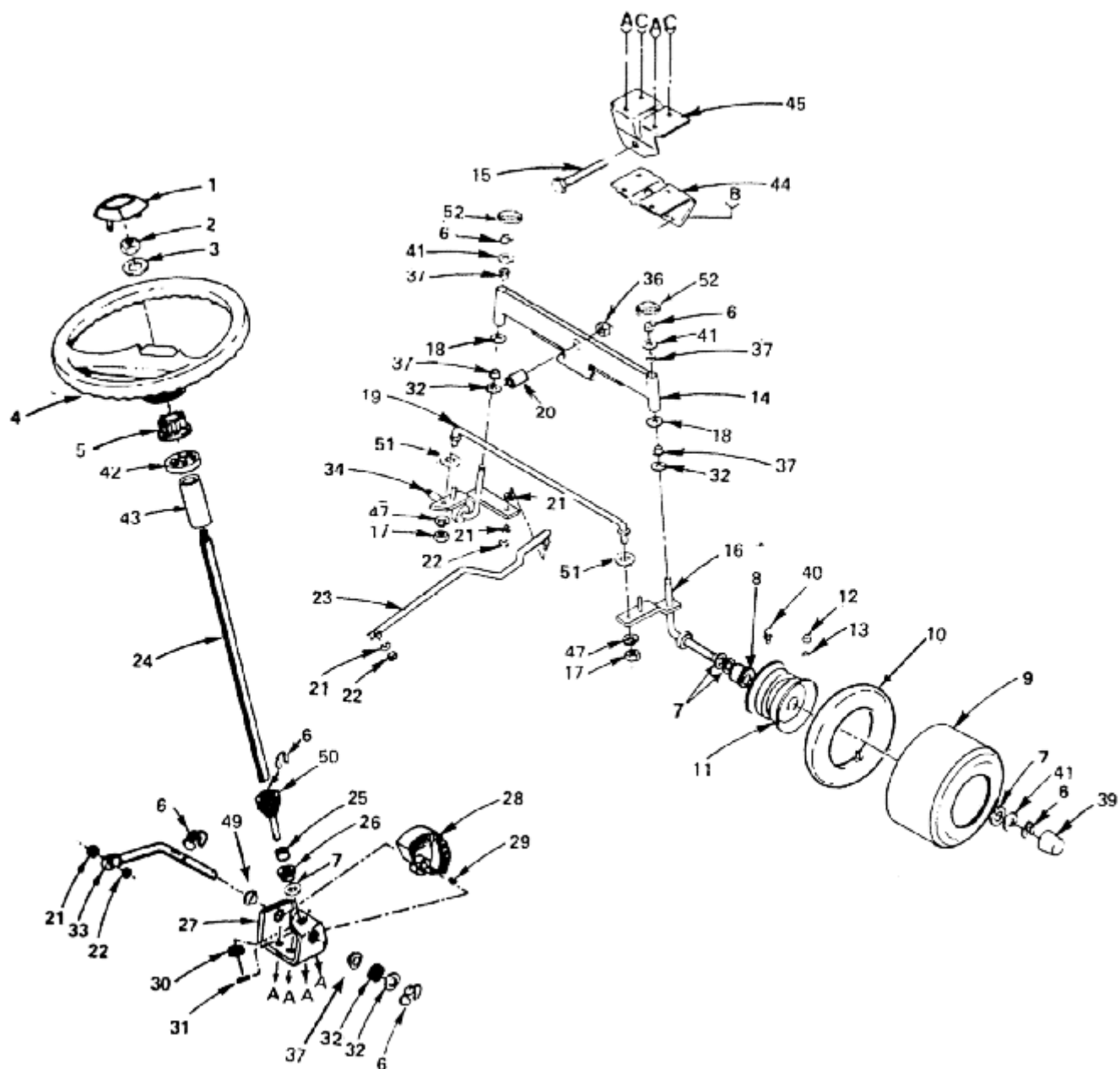


DRIVE GROUP

KEY PART NO.	NO.	DESCRIPTION
1	532 10 90-70	Retainer Belt
2	532 10 82-36	Bracket- Switch
3	817 02 10-08	Screw Tap. Hex Hd. 10-24 x 1/2
4	532 10 57-30	Keeper- Belt, Engine
4a	532 12 12-18	Keeper- Belt, Engine
5	532 12 59-07	V-Belt, Drive
6		Washer 13/32 x 13/16 x 12 Ga.
7	532 10 58-64	Bracket - Suspension
11		Nut - Crownlock 3/8-16
14	872 14 06-06	Bolt - Rd. Hd. Sq. Neck 3/8-16 x 3/4
15		Washer 17/32 x 15/16 x 16 Ga.
16	532 12 15-99	Arm Assembly - Suspension, L.H.
17	532 00 91-35	Retainer- Spring
18	532 12 36-74	Idler- Flat
19		Nut- Hex 1/2-13
20	532 10 63-08	Trunnion- Lift, Lower
22	532 12 15-98	Arm Assembly - Suspension, R.H.
23	532 10 58-48	Bolt - Shoulder 3/8-16
24	532 10 98-41	Pulley- Engine
25	532 12 50-05	Bolt - Hex 7/16-20 x 4
26		Washer- Lock 7/16
27		Bolt - Flex 3/--16 x 2 - 3/4
28	532 00 44-70	Spacer
29	532 10 61-90	Clamp
30	532 12 37-70	Strap - Locator
31	532 12 36-62	Keeper- Belt, L. H.
32	532 12 36-63	Keeper - Belt, R. H.
33	532 00 49-21	Spring - Retainer
34		Bolt - Hex 5/16-18 x 3/4
35		Nut - Lock 5/16-18
36		Bolt - Hex 3/8-16 x 1
37	532 10 82-18	Clutch - Electric
38		Centerlock Flange Nut - 3/8-16
39	532 12 61-97	Washer- 15/32 x 1-3/8 x 1/4
40	532 10 91-69	Locator - Clutch
41		Washer
42	532 11 07-39	Spring Washer
43	872 14 05-06	Bolt Rd. Sq. Neck- 5/16-18 x 3/4



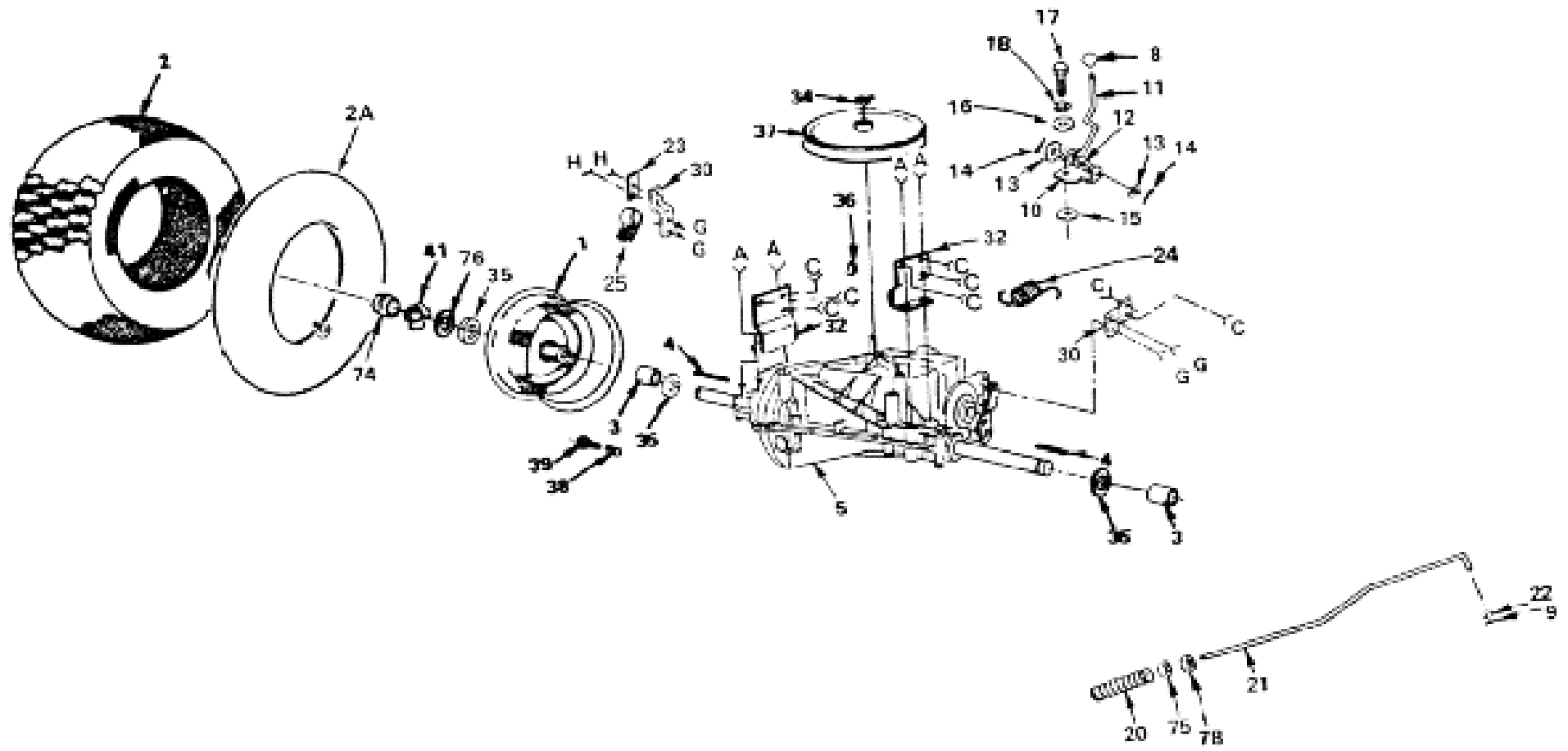
STEERING, FRONT AXLE AND WHEELS



STEERING, FRONT AXLE AND WHEELS

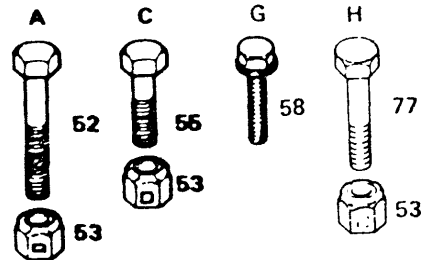
KEY NO.	PART NO.	DESCRIPTION
1	532 12 44-16	Insert - Steering Wheel
2		Nut - Hex Toplock Jam 1/2-20
3	532 10 07-12	Washer 17/32 x 2-1/4 x .160
4	532 12 44-15	Steering Wheel - 13"
5	532 10 07-11	Adapter - Wheel, Steering
6	812 00 00-29	Klip Ring
7	532 12 17-49	Washer - 25/32 x 1 1/4 x 16 Ga.
8	532 00 90-40	Bearings - Wheel, Front
9	532 10 62-22	Tire - Rib Tread 15 x 6.00-6 (Tubeless)
10	532 05 99-04	Tube - Tire (not furnished with Tractor)
11	532 10 67-32	Rim Assembly - 6 Front (Inc.2 each Key No.8)
12	532 06 51-39	Stem - Valve
13	532 05 91-92	Cap - Valve
14	532 10 80-75	Axle Assembly - Front
15		Bolt - Hex 5/--11 x 3-314
16	532 10 56-54	Spindle Assembly. - R.H.
17	873 81 05-00	Nut- Hex 5/16-24
18		Washer - 27/32 X 1-1/4 X 16 Ga.
19	532 12 13-34	Tie Rod
20	532 11 04-38	Bearing
21		Lockwasher - 3/8
22	873 61 06-00	Nut - Hex 3/8-24
23	532 10 57-27	Drag Link
24	532 10 95-57	Shaft Assembly - Steering
25	532 07 45-80	Spacer
26		Bushing - Steering Rod
27	532 10 94-32	Bracket Assembly - Steering
28	532 10 86-84	Gear - Sector
29	532 10 61-26	Woodruff Key - 3/16 x 3/4
30	532 10 19-30	Washer - Hardened
31	532 00 28-82	Drive Pin - 3/16 X 1
32	532 12 49-31	Bearing - Thrust
33	532 10 86-83	Rod - Steering
34	532 10 56-56	Spindle Assembly - L.H.
35	532 12 28-19	Screw - Hex Washer Hd. - Thread Forming - Type TT - 3/8 - 16 x 3/4
36		Nut- Lock Flange,5/8-11
37	532 00 33-66	Bearing
39	532 12 45-77	Cover- Wheel, ó", Front
40	532 00 02-78	Grease Fitting
41	532 12 17-48	Washer 25/32 x 1-5/8 x 16 Ga.
42	532 10 69-43	Spacer- Shaft, Steering
43	532 10 69-45	Tube - Shaft, Steering
44	532 10 56-64	Support - Saddle, Front
45	532 10 56-63	Support - Saddle, Rear
46		Screw - Hex Washer Thd. Rolling - 5/16-18 X 1/2
47		Lockwasher- 5/16
48		Screw - Hex Washer Hd. Thread Forming - Type TT - 3/8-16 x 1
49	532 10 98-16	Nyliner - Snap In
50	532 10 86-85	Gear - Pinion
51		Washer-11/32X3/4X16Ga.
52	532 12 12-32	Spindle Cap

TRANSAXLE AND REAR WHEEL

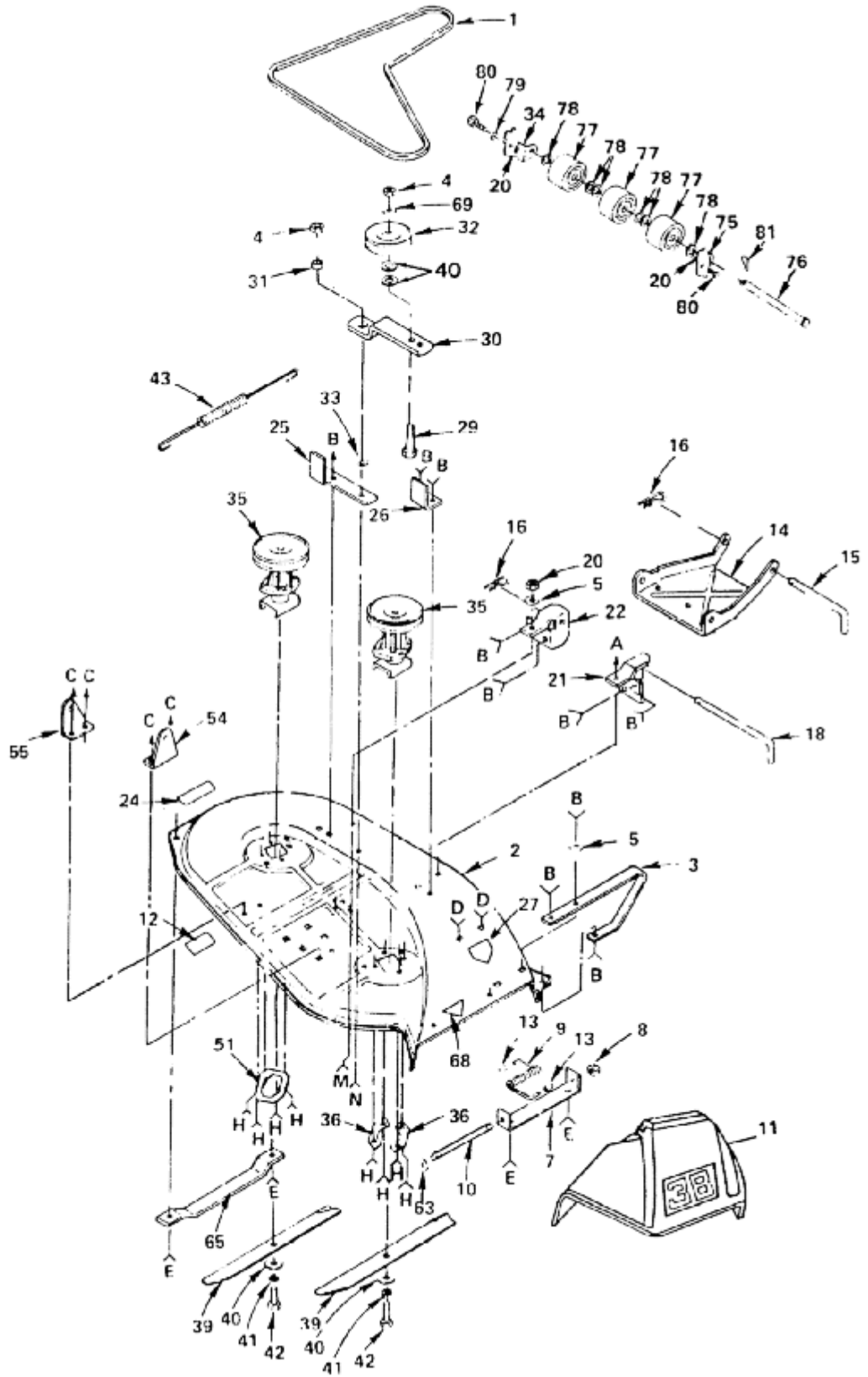


TRANSAXLE AND REAR WHEEL

KEY PART NO. NO.	DESCRIPTION	KEY NO.	PART NO.	DESCRIPTION		
1	532 10 61-08		24	532 11 04-22	Rim Assembly 8" Rear	Spring - Brake Return
2	532 10 62-68		25	532 12 49-96	Tire 18x9.50-8(Tubeless)	Clip
2A	532 12 49-26		30	532 10 58-42	Tube-Tire (not furnished with Tractor)	Strap-Torque
3	532 10 95-02		32	532 10 91-67	Spacer - Spilt	Bracket - Transaxle
4	532 12 35-83		34	812 00 00-28	Key - Square 3/16 x 2	Ring - Klip
5	532 10 99-78		35	532 12 17-49	Transaxle - 6 Speed, Model No.4150-61	Washer - 25/32 x 1 -1/4 x 16 Ga. (2 to 4 as required)
8	532 12 12-74		36	532 12 50-96	Knob - Control	Woodruff Key - 3/16 x 34
9			37	532 12 36-66	Cotter Pin - 1/8 x 3/4	Pulley-Transaxle
10	532 10 88-43		38	532 05 91-92	Plate - Rod, Shift	Cap - Valve
11	532 12 43-79		39	532 06 51-39	Rod - Shifter	Stem - Valve
12	532 10 57-00		41	812 00 00-01	Spring - Torsion	E-Ring
13			52		Washer 15/32 x 3/4 x 16 Ga.	Bolt - Hex 3/8-16 x 2-3/4
14			53		Pin, Cotter 1/8 x 1	Nut - Lock 3/~-16
15	532 10 63-62		55		Washer - Shift Plate	Bob- Hex 3/8 - 16 x 3/4
16			58		Washer 9/32 x 314 x 10 Ga.	Screw Hex Washer Hd. Thd Forming, Type TT 5/16 18 UNC x 3/4
17	871 04 04-12		74	532 12 45-78	Bolt - Hex t14- 28 x 3/4, Gr.8	Cap - Hub, Rear
18			75		Washer - Lock 1/4	Nut- Centerlock 3/8-16
20	532 10 68-88		76	532 12 17-48	Spring- Rod, Brake	Washer 25/32 x 1 -518 x 16 Ga.
21	532 11 04-37		77		Rod - Brake	Bolt - Hex 3/~-16 x 1
22			78		Washer 13/32 x 13/16 x 16 Ga	Nut - Hex Jam,318 - 16
23	532 10 61-57				Plate - Strap, Torque	



38" MOWER



38" MOWER

KEY PART NO. NO.	DESCRIPTION	KEY PART NO. NO.	DESCRIPTION
1 532 10 60-85	V-Belt	33 532 10 65-13	Washer-Wear,1/16
2 532 12 12-59	Housing Assembly - Mower	34 532 10 96-46	Bracket - Nose Roller, L.H.
3 532 00 84-17	Runner - R.H.	35 532 12 16-87	Mandrel Assembly
4	Nut - Lock,3/8-16	36 532 10 06-68	Plate - Support, Mandrel
5	Washer - 11/32 x 3/4 x 16 Ga.	37	Screw - Hex Washer Hd.3/8-16 x 7/8
6 872 14 05-05	Bolt- Rd. Hd. Sq. Neck.,5/16-18 x 5/8	39 532 12 12-63	Blade-38"
7 532 10 58-96	Bracket - Deflector	40 819 13 20-12	Washer - 13/32 x 1-1/4 x 12 Ga.
8 532 11 04-52	Nut	41	Washer-Lock, 3/8
9 532 10 67-34	Spring - Deflector	42	Bolt - Hex 3/8-24 x 1-1/2 Gr.5
10 532 10 67-35	Rod - Hinge	43 532 10 82-50	Spring - Ext.
11 532 10 67-36	Deflector - Shield	50 872 14 06-06	Bolt - Rd. Hd. Sq. Neckiage 3/8 16x3/4
12 532 10 58-14	Decal-V Belt Schematic	51 532 11 04-45	Plate - Support
13 532 10 53-04	Cap	54 532 10 58-57	Bracket - Suspension.! Rear, R.H.
14 532 10 56-62	Link - Parallel	55 532 10 86-73	Bracket - Suspension., Rear, L.H.
15 532 10 57-44	Pin - Hinge,Front	63	Washer - 11/32 x 5/8 x 16 Ga.
16 532 00 49-21	Spring - Retainer	65 532 12 50-74	Runner - L.H.
18 532 10 98-35	Pin - Hinge, Rear	67 872 14 06-10	Bolt - Rd. Hd. Sq. Neck.3/8-16x 1-1/4
20	Nut - Lock 5/16-18	68 532 12 13-49	Decal-Warning
21 532 10 95-98	Bracket- Lift, R.H.	69	Washer - 13/32 x 13/16 x 16 Ga.
22 532 10 95-97	Bracket- Lift, L.H.	71	Washer - 7/16 x 1 x 10 Ga.
23 872 14 05-06	Bolt - Rd. Hd. Sq. Neckiage 5/16-18 x 3/4	72 872 11 06-06	Bolt - Rd. Hd. Sq. Neckiage 3/8 - 16 x 3/4
24 532 10 98-20	Instruction - Caution Decal	75 532 10 96-47	Bracket - Nose Roller, R.H.
25 532 10 95-03	Support - Arm	76 532 10 97-76	Pin- Pivot
26 532 10 95-04	Stop- Deck, Front	77 532 10 97-29	Roller - Nose
27 532 12 61-92	Decal - Safety Standard (Model YT140CR)	78	Washer - 15/32 x 1 x 10 Ga.
29	Bob - 3/8-16 x 2	79	Washer - 15/32 x 1 x 16 Ga.
30 532 12 35-52	Arm - Idler	80	Bolt - Hex 5/16-18 x 3/4
31 532 10 69-02	Spacer	81	Cotter Pin - 1/8 x 3/4
32 532 12 13-16	Pulley - Idler		

