

# LT960-12



**1.1990**

**Spare parts**

**Ersatzteile**

**Pièces détachées**

**Reserve onderdelen**

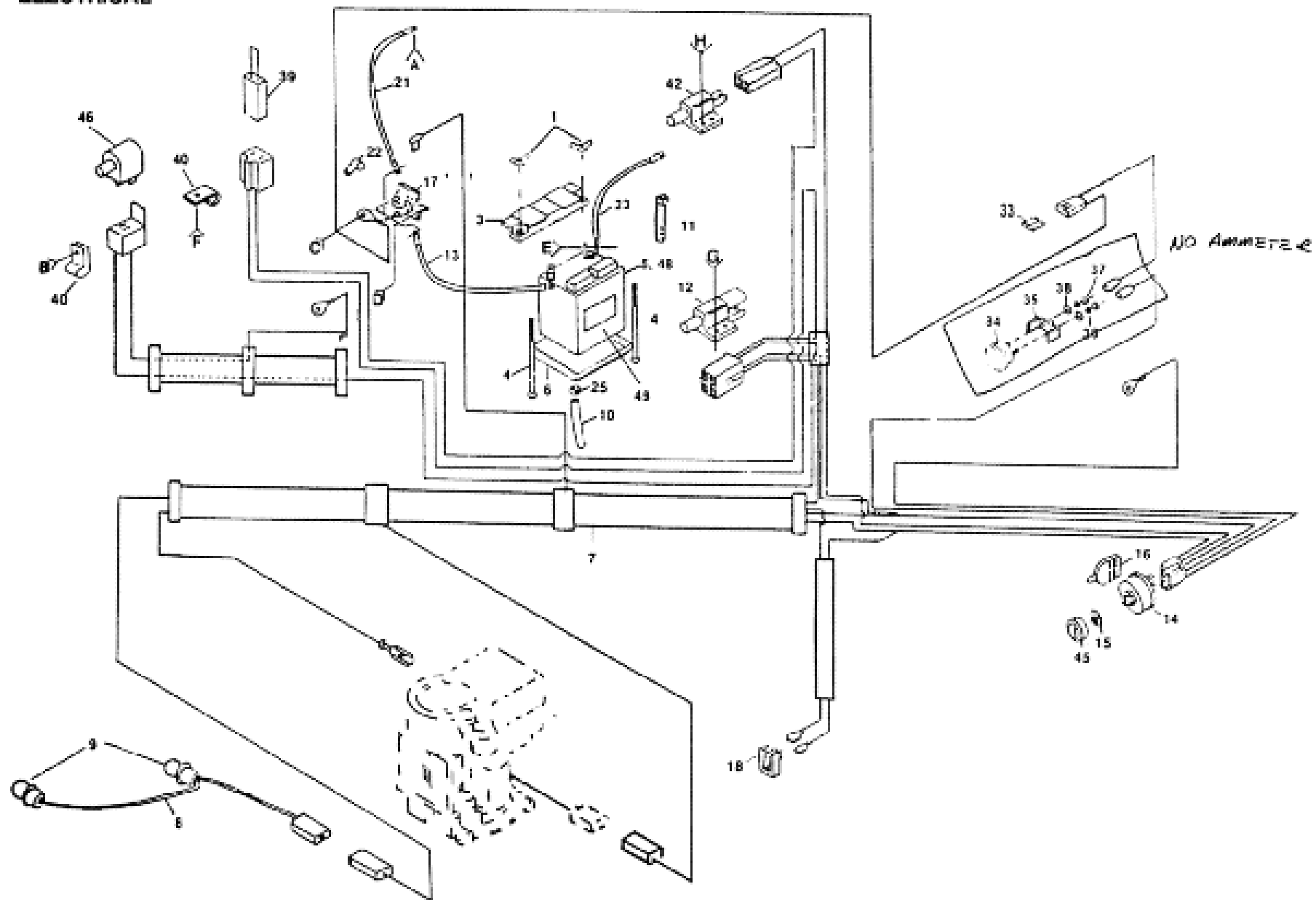
**Repuestos**

**Reservdelar**

REPAIR PARTS

12 HP TRACTOR

ELECTRICAL

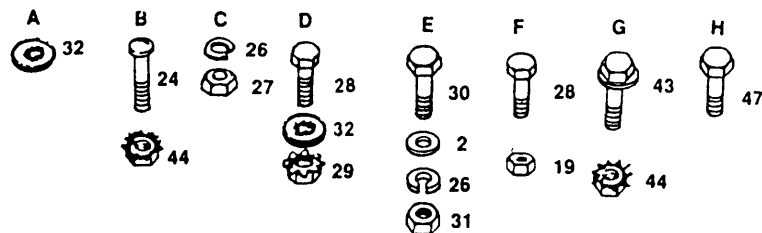


# REPAIR PARTS

## ELECTRICAL 12 HP TRACTOR

KEY NO.	PART NO.	DESCRIPTION	KEY NO.	PART NO.	DESCRIPTION
1	532 12 31-98	Wing Nut 1/4 - 20	24	874 64 10-08	Screw 10/32 x 1/2 Pan Head IJNF
2		Washer 9/32 x 5/8%16 Ga.	25	532 10 95-96	Clamp, Hose
3	532 10 24-76	Terminal Guard	26		Lockwasher 1/4
4	872 24 04-60	Carriage Bolt 1/4 - 20 x 7/16	27		Nut, Hex Jam 1/4- 20
5	532 12 12-65	Battery 12V. "Shipped Dry, Purchase Battery Acid Locally)	28		Bolt, Hex 1/4 - 20 x 1/2 Gr.5
6	532 12 48-86	Battery Tray	29		Nut, Keps, Hex 1/4- 20
7	532 12 59-13	Ignition Harness	30		Bog, Hex 1/4 - 20 x 3/4
8	532 11 08-59	Harness, Light Socket	31		Nut, Hex 1/4 - 20
9	532 00 76-62	Light Bulb	32		Washer, Lock 1/4 - 20 ant. Tooth
10	532 00 76-04	Tube, Battery Tray	33	532 10 88-24	Fuse, 30 AMP
11	532 12 47-56	Cable Tie	39	532 10 25-01	Loop, Wire
12	532 10 95-53	Switch, interlock, Attachment Clutch	40	532 12 49-95	Clip, Insulated
13	532 12 47-70	Cable, Battery (Battery to Solenoid)	42	532 10 44-45	Switch, Interlock, Clutch Pedal
14	532 12 51-04	Switch, ignition	43		Hex Washer Head Screw
15	532 10 97-88	Nut, ignition	44	873 95 10-00	Nut, Keps #10-32 UNF
16	532 12 21-47	Key	45	532 10 97-87	Bezel, ignition
17	532 10 90-81	Solenoid	46	532 12 13-05	Switch, Plunger
18	532 11 07-12	Switch, Light	47	817 02 10-08	Screw, Hex Tapping #10-24 x 1/2
19		Nut, Hex 1/4 - 20	48	532 12 12-64	Battery Caps Set
20	532 00 41-71	Clip Wire	49	532 12 15-49	Decal, Battery Caution
21	532 12 47-80	Cable, Battery (Solenoid to Starter)	—	532 12 39-29	Manual, Owners- English
22	532 12 47-83	Terminal Cover (For Solenoid)	—	532 12 39-30	Manual, Owners - French
23	532 12 47-73	Cable, Battery (Battery to Ground)	—	532 10 15-39	Sheet, inst. Tractor 15° Slope English
			—	532 10 15-72	Sheet, Inst. Tractor 15° Slope French

Note: All component dimensions given in U.S. inches. 1 in. = 25.4 mm





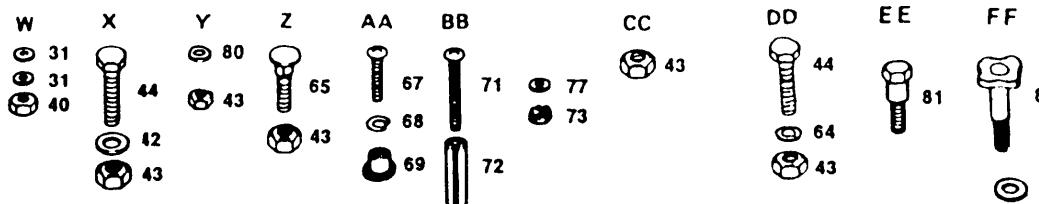
# REPAIR PARTS

## 12 HP TRACTOR

### ENCLOSURES

KEY NO.	PART NO.	DESCRIPTION	KEY NO.	PART NO.	DESCRIPTION
1		Washer, Lock 1/4	54	532 12 42-94	Pan - Seat
3	532 12 49-05	Panel, Side L.H.	55		Screw- Hex Head Self Tapping No. 10-16 x 1/2 Type B
4	532 12 47-21	Plate, Dashboard	56		Nut - Keps 5/16 - 18
5	532 12 41-82	Dashboard	57		Bracket Assembly - Fender
6	532 10 47-83	Dash, Lower	58	532 10 55-09	Screw - Truss Hd.5/16 - 18 x 3/4
7	532 12 61-55	Decal, Instruction	59		Screw - Hex Washer Hd.114 - 20 x 314
8	532 10 69-65	Plate, Support, Battery	60	817 49 04-12	Decal - Caution
9	532 12 41-30	Support Assembly, Dash	61	532 12 66-81	Guide - Belt, Lower, Engine, Pulley, R.H.
10	532 10 50-37	Foam Strip	62	532 12 14-41	Cover - Access
11	532 12 42-97	Decal Hood L.H.	63	532 12 17-94	Washer 13/32 x 1 - 1/4 x 12 Ga.
12	532 10 67-84	Strap Assembly, Hinge, Rear	64		Bolt - Carriage 3/8 - 16 x 3/4
13	532 10 46-18	Strap Assembly, Hinge, Front	65	872 14 06-06	Pad - Footrest
14	532 12 50-07	Hood	66	532 10 82-56	Screw - cross Recess Pan Hd. Mach. 10 - 24 x 1/2
17	532 12 16-10	Bracket Assembly Frame Pivot L.H.	67	874 19 10-08	Washer- Lock No.10
18	532 12 66-89	Grill Assembly	68		Nut - Weld
20	532 11 08-52	Bracket Assembly Frame Pivot R.H.	69	532 12 50-04	Latch- Hood
21	532 12 42-98	Decal Hood, R.H.	70	532 10 98-08	Screw - Machine Cross Recess 10-24x 1 - 1/4
22	532 12 50-63	Panel Side, R.H.	71	874 98 10-20	Spacer - Split 10 x 3/4
23	532 10 69-76	Panel, Dash R.H.	72	532 00 72-06	Nut - Keps 10 - 24
24	532 12 50-36	Footrest, R .H.	73		Strap Assembly - Fender
25	532 12 12-77	Chassis	74	532 10 55-11	Bracket - Plot Seat
26	532 12 13-06	Drawbar	75	532 10 55-13	Bolt - Shoulder
27	532 10 96-65	Panel-Dash,L.H.	76	532 10 55-29	Washer 7/32 x 1/2 x 18 Ga.
28	532 12 47-22	FootRest-R.H.	77		Clip- Fuel Line
29		Nut - Crownlock 5/16-18	79	532 12 49-96	Washer 13/32 x 1 x 14 Ga.
30		Saddle	80		Shoulder - Bolt 5/16 x 18 UNC
31		Washer9/32x3/4x 16Ga.	81	532 12 11-44	Knob - 1/2
32	532 12 14-40	Guide-Bell, Lower, Engine Pulley, L.H.	82	532 12 00-68	Washer 17/32 x 13/16 x 12 Ga.
33	532 12 47-20	Bushing-Steering	83		Washer 11/32x 11/16x 16 Ga.
34	532 10 62-02	Reflector - Taillight	84		Bracket Asm L.H. Pivot
35	532 12 55-84	Decal-Fender	85	532 12 45-22	Bracket Asm. R.H. Pivot
36	532 12 41-85	Seat	86	532 12 45-23	Washer 13/32 x 3/4 x 10 Ga.
37	532 12 49-74	Fender	87		Bolt Carriage 1/4 - 20 x 1-1/4
38	532 12 66-77	Decal - Clutch/Brake	88	872 17 04-10	Nut - Hex Flange 1/4- 20
39	532 12 41-81	Spring,Seat	89		Foam Strip
40		Nut-T1ex 1/4-20	90	532 12 12-51	Spring
41		Bolt-Hex 3/8-16 x 3/4	91	532 12 12-50	Spacer
42		Washer 13/32 x 13/16 x 12 Ga.	92	532 12 12-49	Bracket - Switch Mount
43		Nut - Crownlock 3/8-16	93	532 12 12-46	Snap Bushing
44		Bolt-Hex 3/8-16 x 1	94	532 12 12-48	Wing Nut 1/4 - 20
45	817 21 10-10	Screw-Hex Washer Hd. Tapping 10-16 x 5/8	95	873 49 04-00	Plate Hlommeligation
46	532 10 47-55	J" Fastener	99		Washer, Lock, Int./Ext.1/4
47		Screw-Hex Washer Hd. Thd. Rolling 3/8 - 16 3/4 Type TT	102		
48		Screw - Hex Washer Hd. Thd. Rolling 5/16 - 18 x 3/4 Type TT			
50		Nut - Crownlock 1/4 - 20			
51		Bolt - Hex 3/8 - 16 x 1 - 1/4			
52		Nut - Keps 3/8 - 16			
53		Screw - Hex Washer Hd. Thd. Forming 3/8 - 16 x 1/2 Type TT			

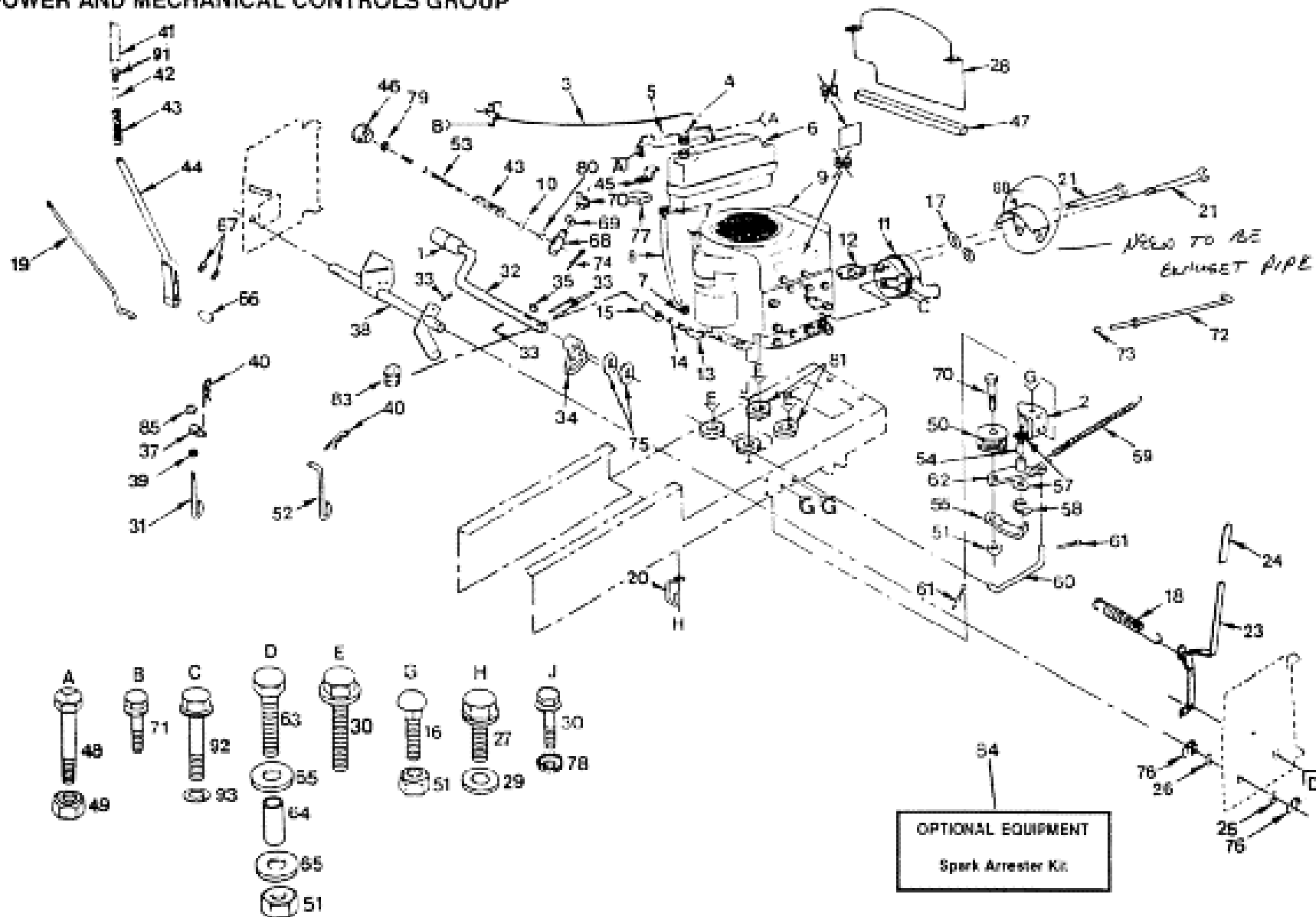
NOTE: All component dimensions given in U.S. inches.  
1 inch = 25.4 mm.



REPAIR PARTS

12 HP TRACTOR

POWER AND MECHANICAL CONTROLS GROUP



## REPAIR PARTS

### 12 HP TRACTOR

NOTE: All component dimensions given in U.S. inches.  
1 inch = 25.4 mm.

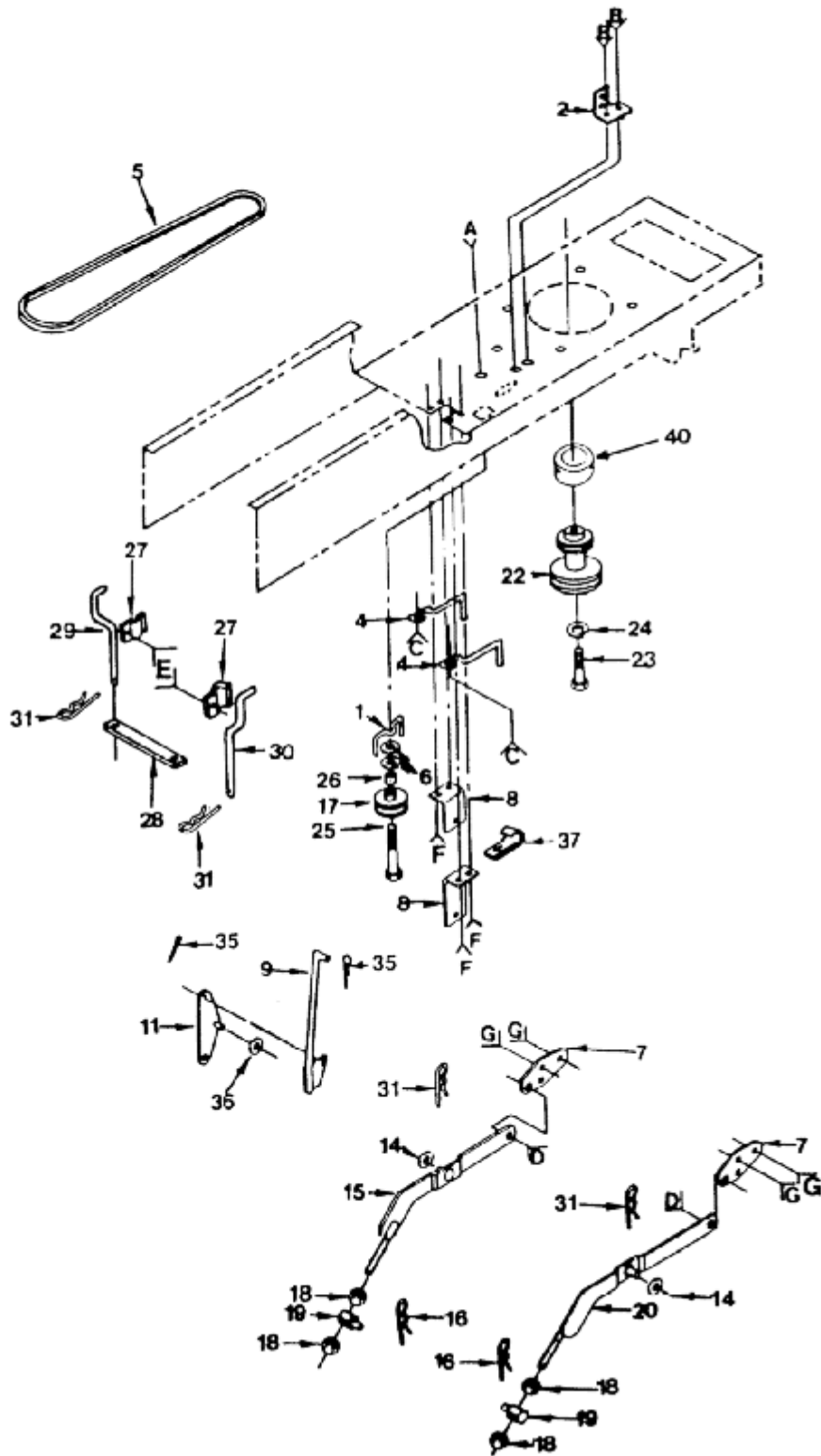
#### POWER AND MECHANICAL CONTROLS GROUP

KEY NO.	PART NO.	DESCRIPTION	KEY NO.	PART NO.	DESCRIPTION
1	532 12 48-72	Pedal Cover	48		Bolt, Hex 5/16 - 18 x 3/4 Gr. 5
2	532 12 31-02	Bracket Assembly, Clutch	49		Locknut 5/16 - 18 Gr. B
3	532 12 33-14	Control, Throttle	50	532 12 37-66	Pulley, Idler
4	532 00 85-04	FuelCap	51		Locknut 3/8 - 16
5	532 12 12-81	Support, Tank, Fuel	52	532 11 00-29	Link, Lift
6	532 12 12-80	Tank, Fuel	53	532 11 07-29	Rod, Adjust, Lift
7	532 12 34-87	Hose Clamp	54	532 10 57-06	Bearing
8		Fuel Line	55	532 10 90-70	Retainer, Belt
			57	532 11 08-12	Washer, Hardened
10		Wasner 13/32 x 5/8 x 16 Ga.	58	812 00 00-39	Ring, Klip
11	532 12 30-75	Muffler	59	532 10 57-09	Spring, Return Clutch
12	532 12 55-93	Gasket, Exhaust	60	532 10 57-10	Link, Clutch
13		90° Street Elbow 3/8 NPT	61		Pin Cotter 1/8 x 3/4
14		Std. Pipe Nipple 3/8 - 18 NPT x 3 -1/2	62	532 10 57-05	Belicrank Assembly (Inc. Key No. 54)
15		90° Elbow 3/8 NPT	63		Bolt Hex 3/8 - 16 x 1 - 1/2
16	872 14 06-06	Bolt, Carriage 3/8 - 16 x 3/4	64	532 10 80-56	Bushing, Handle, Clutch
17		Washer Lock 5/16	65		Washer 3/8 x 1 x 12 Ga.
18	532 10 27-27	Spring, Extension	66	532 12 49-97	Woodruff Key 1/4 x 1
19	532 12 17-19	Rod Assembly, Lever	67		Set Screw, Hex Socket Forged Headless 3/8 - 16 x 3/8
20	532 12 12-18	Retainer, Belt, Chassis L.H.	68	532 11 08-10	Trunnion, Stop, Depth
21		Screw, Hex.- Hd. Cap 5/16 - 18 x 5/8	69		Washer 15/32 x 3/4 x 16 Ga.
23	532 10 69-83	Handle, Clutch Attachment	70	812 00 00-37	Klip Ring
24	532 00 46-17	Grip, Handle	71		Screw Hex Washer Head Thread Cutting 1/4 - 20 x 1/2
26		Washer 29/32 x 1 - 1/4 x 16 Ga.	72	532 12 56-37	Rod, Brake, Park
27		Screw, Hex Washer Thd. Rolling 3/8 - 1 6 x 3/4	73	532 12 42-36	Plunger Cap
28	532 12 64-23	Baffle, Vertical	74		Cotter Pin 3/32 x 1/2
29		Washer 13/32 x 13/16 x 12 Ga.	75	532 12 17-49	Washer 25/32 x 1 - 1/4 x 16 Ga.
30		Screw, Hex Washer Hd. Thread Rolling 3/8 - 16 x 1 - 3/4 Type TT	76	812 00 00-22	E-Ring
31	532 11 04-48	Link, Lift, Adjustable	77	532 00 64-31	Pad, Spacer
32	532 12 24-24	Shaft, Pedal, Foot	78		Washer, Lock 3/8 - Ext. Tooth
33	532 00 15-72	Roll Pin 3/16 x 1	79		Nut, Hex Jam 3/8 - 16
34	532 10 69-18	Arm, Brake	80	532 11 08-07	Nut, Special
35	532 12 50-96	Woodruff Key	81	532 10 12-00	Spacer
37	532 11 04-47	Trunnion, Lift	83		Oil Drain Plug
38	532 12 01-74	Shaft, Assembly Lift			
39		Nut, Hex Jam 7/16 - 20	85		Nut, Jam Crownlock 7/16 - 20
40	532 12 46-70	Retainer Spring	86		Screw Hex Washer Hd Thread Rolling 5/16-18 x 34
41	532 10 94-13	Grip, Handle			
42	532 12 23-64	Plunger, Lever, Hand	87		Washer 11/32 x 3/4 x 16 Ga.
43	532 12 48-74	Spring	88	532 12 30-73	Muffler, Exhaust.
44	532 12 17-18	lever Assembly, Hand Kit (Inc. Key No 19)	91	532 12 45-26	Button, Plunger
45	532 10 47-99	Brace, Tank	92		Bok, Hex 1/4-20 x 1/2 Gr.5
46	532 12 18-91	Handle, Adjust Lift	93		Washer, Lock 1/4
47	532 10 49-15	Strip, Foam 14.5.			

REPAIR PARTS

12 HP TRACTOR

DRIVE GROUP

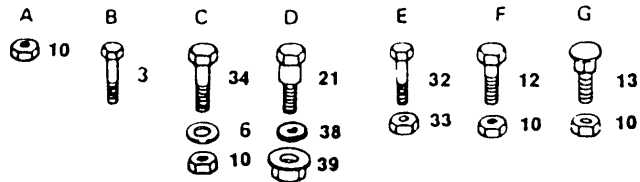




KEY NO.	PART NO.	DESCRIPTION
1	532 10 90-70	Keeper, Belt
2	532 10 82-36	Bracket, Switch
3	817 02 10-08	Screw, Tap. Hex Hd.10 - 24 x 1/2
4	532 10 57-30	Keeper, Belt, Engine
5	532 12 59-07	V-Belt, Drive
6		Washer 13/32 x 13/16 x 12 Ga.
7	532 10 58-64	Bracket, Suspension
8	532 10 64-44	Bracket, Bellcrank
9	532 10 84-51	Rod Assembly, Clutch Primary
10		Nut, Crownlock 3/8 - 16
11	532 10 97-28	Bellcrank Assembly
12		Bolt, Hex 3/8 - 16 x 3/4
13	872 14 06-06	Bolt,Rd.Hd.Sq Neck 3/8-16 x 3/4
14		Washer 17/32 x 15/16 x 16 Ga.
15	532 12 15-99	Arm Assembly, Suspension, L.H.
16	532 00 91-35	Retainer, Spring
17	532 12 36-74	Idler, Flat
18		Nut, Hex 1/2-13
19	532 10 63-08	Trunnion, Lift Lower
20	532 12 15-98	Arm Assembly, Suspension R.H.
21	532 10 58-48	Bolt, Shoulder 3/8 - 16
22	532 10 57-31	Pulley, Engine
23		Bolt,Hex7/16-20 x1-3/4
24		Washer, Lock
25		Bolt, Hex 3/8 - 16 x 2 - 3/4
26	532 00 44-70	Spacer
27	532 10 61-90	Clamp
28	532 12 37-70	Strap, Locater
29	532 12 36-62	Keeper, Belt, L .H .
30	532 12 36-63	Keeper, Belt, R.H.
31	532 00 49-21	Spring, Retainer
32		Bolt, Hex 5/16 - 18 x 3/4
33		Nut, Lock 5/16 - 18
34		Bolt, Hex 3/8 - 16 x 1
35		Pin, Cotter 1/8 x 3/4
36		Washer, 13/32 x 7/8 x 10 Ga.
37	532 00 53-20	Clip, Insulated
38	532 11 07-39	Washer, Spring
39		Nut, Flange Lock 3/8
40	532 00 64-04	Spacer

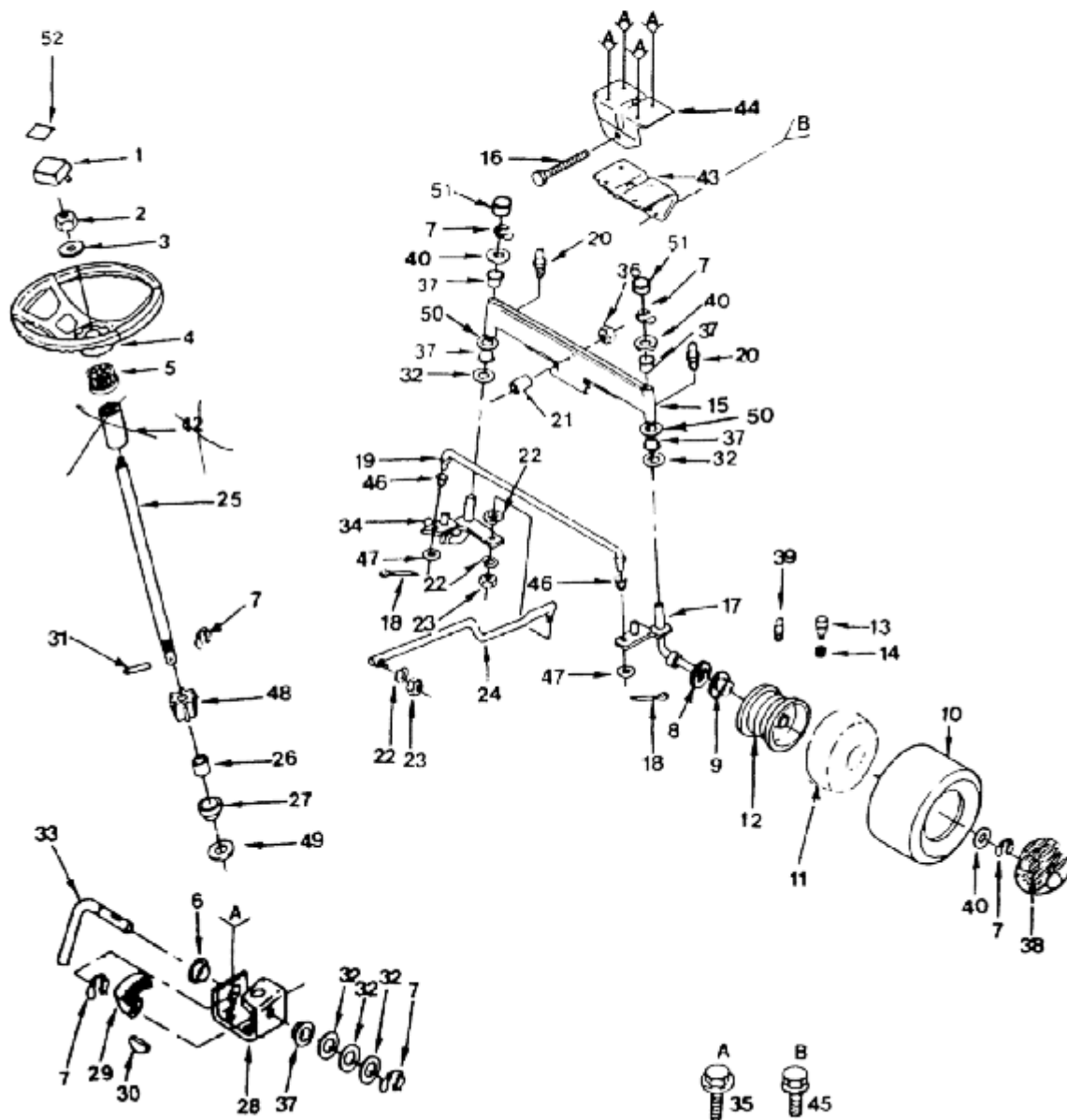
NOTE: All component dimensions given in U.S. inches.

1 inch = 25.4 mm



REPAIR PARTS

12 HP TRACTOR  
STEERING, FRONT AXLE AND WHEELS



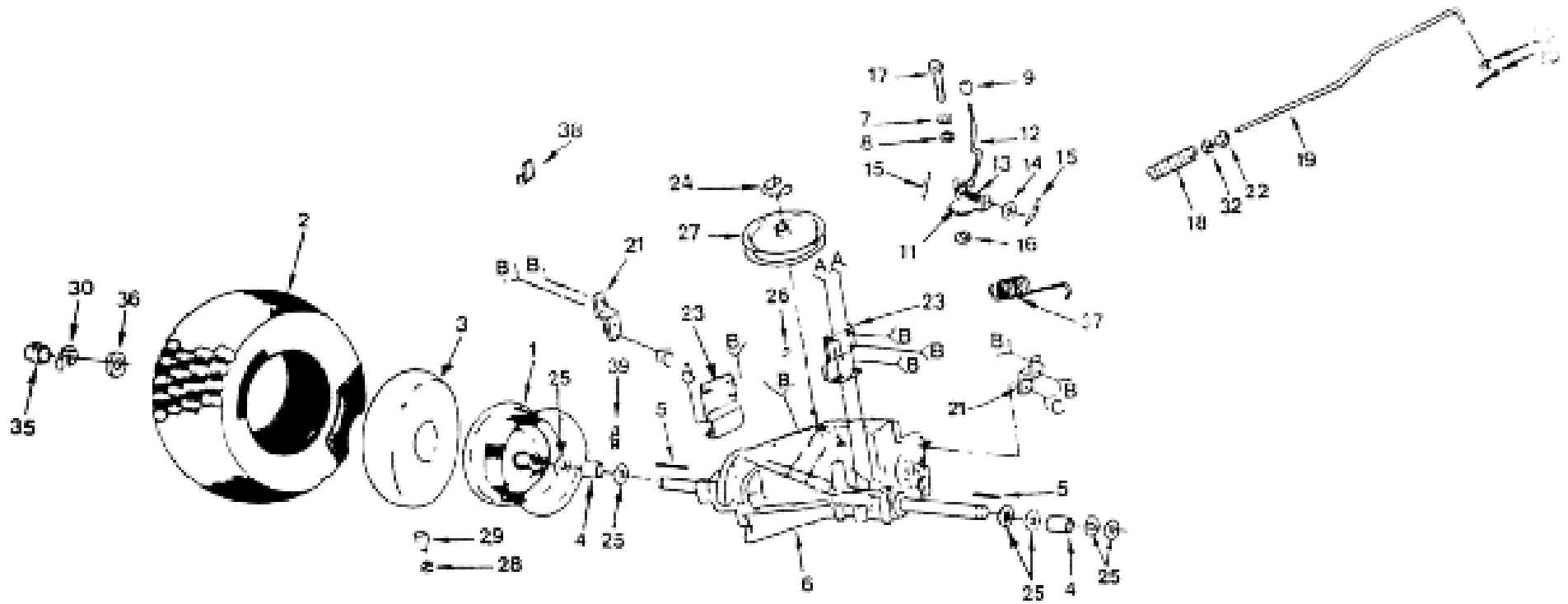
**REPAIR PARTS**  
**12 HP TRACTOR**  
**STEERING, FRONT AXLE AND WHEELS**

KEY NO.	PART NO.	DESCRIPTION	KEY NO.	PART NO.	DESCRIPTION
1	532 12 44-16	Insert, Steerina Wheel	26	532 07 45-80	Spacer
2		Nut, Hex Jam loplock 1/2 - 20	27	532 07 12-08	Bushing, Steering Rod
3	532 10 07-12	Washer 17/32 x 2 - 1/4 x .160	28	532 10 94-32	Bracket Assembly, Steering
4	532 12 44-15	Steering Wheel	29	532 10 86-84	Gear, Sector
5	532 11 07-11	Adapter, Steering Wheel	30	532 10 61-26	Woodruff Key 3/16 x 3/4
6	532 10 98-16	Nyliner, Snap-in	31	532 00 28-82	Drive Pin 3/16 x 1
7	812 00 00-29	Klip ring	32	532 12 49-31	Bearing Thrust
8	532 12 17-49	Washer 25/32 x 1 - 1/4 x 16 Ga.	33	532 10 86-83	Rod, Steering
9	532 00 90-40	Bearings, Wheel, Front	34	532 10 56-56	Spindle Assembly, L.H.
10	532 10 62-22	Tire, 15 x 6.00 - 6 (Tubeless)	35		Screw, Hex Washer Hd.
11	532 05 99-04	Tube, Tire (not furnished with Tractor)			Thread Forming Type TT 3/8 - 16 x 3/4
12	532 10 67-32	Rim Assembly - 6~' Front (Inc. 2 each Key No. 9)	36		Nut, Flange 5/8- 11
13	532 06 51-39	Stem, Valve	37	532 00 33-66	Bearing
14	532 05 91-92	Cap, Valve	38	532 12 45-77	Front Wheel cover
15	532 10 80-75	Axle Assembly, Front	39	532 00 02-78	Grease Fitting
16		Bolt, Hex 5/8-11 x 3-3/4	40	532 12 17-48	Washer 25/32 x 1 - 5/8 x 16 Ga.
17	532 10 56-54	Spindle Assembly R.H.	43	532 10 56-64	Support, Saddle, Front
18		Pin, Cotter 1/8 x 3/4	44	532 10 56-63	Support, Saddle, Rear
19	532 10 57-15	Tie Rod	45		Screw, Hex Washer Thd. Rolling 5/16-18 x 1/2
20	532 12 48-36	Fitting, Grease	46	532 12 07-54	Bushing
21	532 11 04-38	Spacer Bearing, Front Axle	47		Washer 13/32 x 7/8 x 16 Ga.
22		Lockwasher 3/8	48	532 10 86-85	Gear, Pinion
23		Nut, Hex 3/8 - 24	49	532 10 19-30	Washer, Hardened
24	532 10 57-27	Drag Link	50		Washer 27/32 x 1 - 1/4 x 16 Ga.
25	532 10 95-56	Shaft, Steering	51	532 12 12-32	Spindle Cap

NOTE: All component dimensions given in U.S. inches.

1 inch = 25.4 mm

REPAIR PARTS  
12 HP TRACTOR  
TRANSAXLE AND REAR WHEEL

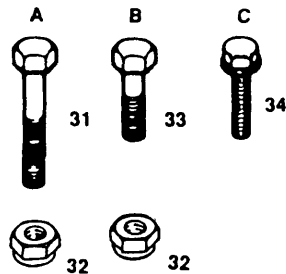


**REPAIR PARTS**  
**12 HP TRACTOR**  
**TRANSAXLE AND REAR WHEEL**

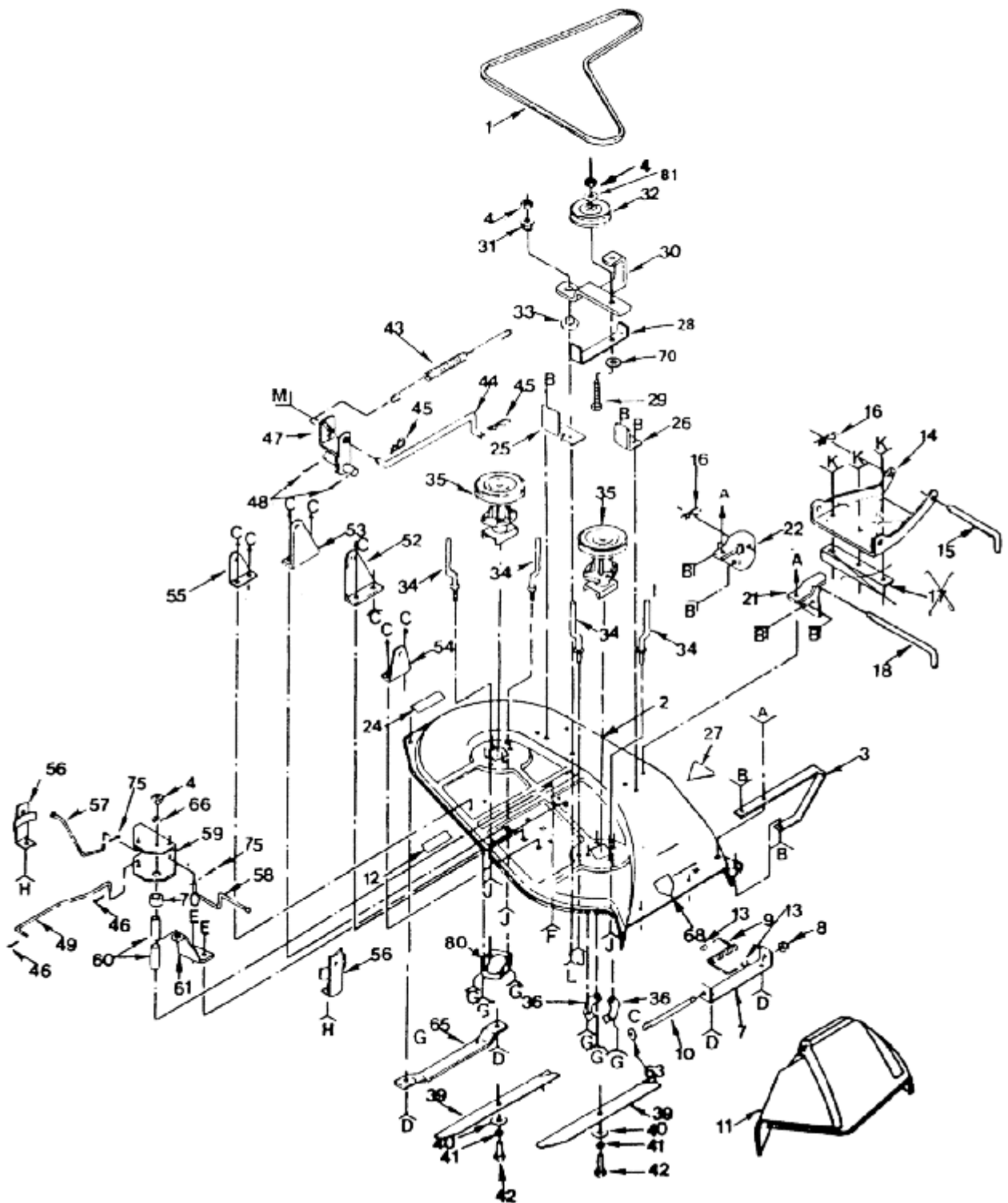
KEY NO.	PART NO.	DESCRIPTION	KEY NO.	PART NO.	DESCRIPTION
1	532 10 61-08	Rim Assembly - 8" Rear	20		Washer 13t32 x 13/16 x 16 Ga.
2	532 10 62-68	Tire 18 x 9.50 - 8 (Tubeless)	21	532 12 15-20	Strap, Torque
3	532 00 71-52	Tube, Tire (not furnished with Tractor)	22		Nut, Hex Jam 318 - 16
4	532 10 95-02	Spacer, Split	23	532 10 91-67	Bracket, Transaxle
5	532 12 35-83	Key, Square 3/16 x 2	24		Ring, Retainer
6	532 10 99-78	Peerless 6 speed (see pages 42 and 43 for pads breakdown)	25	532 12 17-49	Washer 25/32 x 1 - 1/4 x 16 Ga.
7		Washer, Lock 1/4	26	532 12 50-96	Woodruff Key 3/16 x 3/4
8		Washer 9/32 x 3/4 x 10 Ga.	27	532 12 36-66	Pulley, Input Transaxle
9	532 12 12-74	Knob, Control	28	532 05 91-92	Cap, Valve
10		Cotter Pin 1/8 x 3/4	29	532 06 51-39	Stem, Valve
11	532 10 88-43	Plate, Rod, Shift	30	812 00 00-01	E-Ring
12	532 12 43-79	Rod, Shifter	31		Bolt, Hex 3/8 - 16 x 2 - 3/4
13	532 10 57-00	Spring, Torsion	32		Nut, 3/8-16
14		Washer 15/32 x 3/4 x 16 Ga.	33		Bolt, Hex 3/8 - 16 x 3/4
15		Pin, Cotter 1/8x1	34		Screw Hex Washer Hd. Thd. Form.Type TT 5/16 - 18UNCx3/4
16	532 10 63-62	Washer, Shift Plate	35	532 12 45-78	Cap, Hub, Rear
17		Bolt, Hex 1/4 - 28 x 3h Gr. 8	36	532 12 17-48	Washer 25/32 x 1 - 5/8 x 16 Ga.
18	532 10 68-88	Spring, Rod, Brake	37	532 11 04-22	Spring, Brake Return
19	532 11 04-37	Rod, Brake	38	532 12 49-96	Clip, Fuel Line
			39	532 00 02-78	Fittin~Grease

NOTE: All component dimensions given in U.S. inches.

1 inch = 25.4 mm



REPAIR PARTS  
12 HP TRACTOR  
38" MOWER



# REPAIR PARTS

## 38" MOWER 12 HP TRACTOR

KEY NO.	PART NO.	DESCRIPTION	KEY NO.	PART NO.	DESCRIPTION
1	532 10 60-85	V-Belt	42		Bolt, Hex 3/8 - 24 x 1 -1/2 Gr. 5
2	532 12 12-59	Housing	43	532 10 82-50	Spring, Ext.
3	532 00 84-17	Runner R.H.	44	532 10 82-35	Rod, Clutch, Mower
4		Nut, Lock 3/8 - 16	45	532 00 49-21	Spring Retainer
5		Washer 11/32x3/4x 16Ga.	46		Pin, Cotter 3/32 x 3/4
6		Bolt, Carr., 5/16-18 x 5/8	47	532 12 40-66	Rock Shaft Assembly
7	532 10 58-96	Bracket, Deflector	48		Pin, Cotter 3/16 x 1
8	532 11 04-52	Push Nut	49	532 10 82-47	Rod, Brake, Primary
9	532 10 67-34	Spring, Deflector	50		Bolt, Carriage 3/8 - 16 x 3/4
10	532 10 67-35	Rod, Hinge	52	532 10 82-43	Bracket, Pivot R .H .
11	532 10 67-36	Deflector, Shield	53	532 10 82-41	Bracket, Pivot L.H.
12	532 10 58-14	Decal, V-Belt Mower Dvne	54	532 10 58-57	Bracket Susp.,RearR.H.
13	532 10 53-04	Cap	55	532 10 86-73	Bracket Susp., Rear L.H.
14	532 10 56-62	Link, Parallel	56	532 10 65-78	Brake Assembly
15	532 10 57-44	Pin, Hinge, Front	57	532 10 64-63	Rod, Brake, Secondary L.H.
16	532 00 49-21	Spring, Retainer	58	532 10 82-49	Rod, Brake, Secondary R.H.
18	532 10 98-35	Pin, Hinge, Rear	59	532 10 64-56	Bracket, Brake, Pivot
19		Bolt 3/8 - 16 x 3/4	60	532 10 06-72	Spacer, Brake
.20		Nut, Lock 5/16 - 18	61	532 10 06-73	Bracket, Support
21	532 10 96-47	Bracket, Lift R.H.	63		Washer 11/32 x 5/8 x 16 Ga.
22	532 10 96-46	Bracket, Lift L.H .	64		Bolt 3/8 -16 x 5 - 1/2
23	872 14 05-06	Bolt, Carriage 5/16 - 18 x 3/4	65	532 12 50-74	Runner L.H.
24	532 12 61-96	Instruction, Caution Decal	66		Washer 13/32 x 1 x 14 Ga.
25	532 10 95-03	Support, Arm	67	872 14 06-10	Bolt, Carriage 3/8 - 16 x 1 - 1/4
26	532 10 95-04	Stop, Deck, Front	68	532 12 61-82	Decal, Warning
28	532 10 26-69	Guide, Belt	70	532 12 23-14	Spacer
29		Bolt 3/8 - 16 x 2	75		Pin, Cotter 3/32 x 1/2
30	532 12 35-53	Arm, Idler Assembly	76	872 11 05-06	Bolt,Carriage5/16-18 x3/4
31	532 10 69-02	Spacer	77		Bolt Hex 1/4 x 20 x 3/4
32	532 12 13-16	Pulley, Idler	78	532 10 98-93	Washer, Special
33	532 10 65-13	Washer, Wear 1/16	79		Nut, Lock 1/4 - 20
34	532 12 32-04	Keeper, Belt	80	532 11 04-45	Plate, Support L.H
35	532 12 16-87	Mandrel, Assembly	81		Washer, 13/32 x 13/16 x 16 Ga
36	532 10 06-68	Plate, Support, Mandrel			
37		Screw, Hex Washer Hd. 3/8 - 16 x 3/4	?	532 10 97-76	Pin.Pivot.
38		Screw, Hex Washer Hd.3/8 - 16 x 1-1/4	?	532 10 97-29	Roller.Nose.
39	532 12 12-64	Blade	?		Washer
40		Washer 13/32 x 1 - 1/4 x 12 Ga.	?		Washer
41		Washer, Lock3/8	?		Pin Cotter
			?		Bolt.Hex.
			?		Washer.
			?	532 12 61-94	Decal.Deflector Caution

NOTE: All component dimensions given in U.S. inches.  
1 inch = 25.4 mm.

