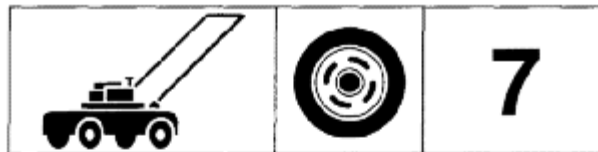


**H** Husqvarna



# YTH 125



**1.1992**

**Spare parts**

**Ersatzteile**

**Pièces détachées**

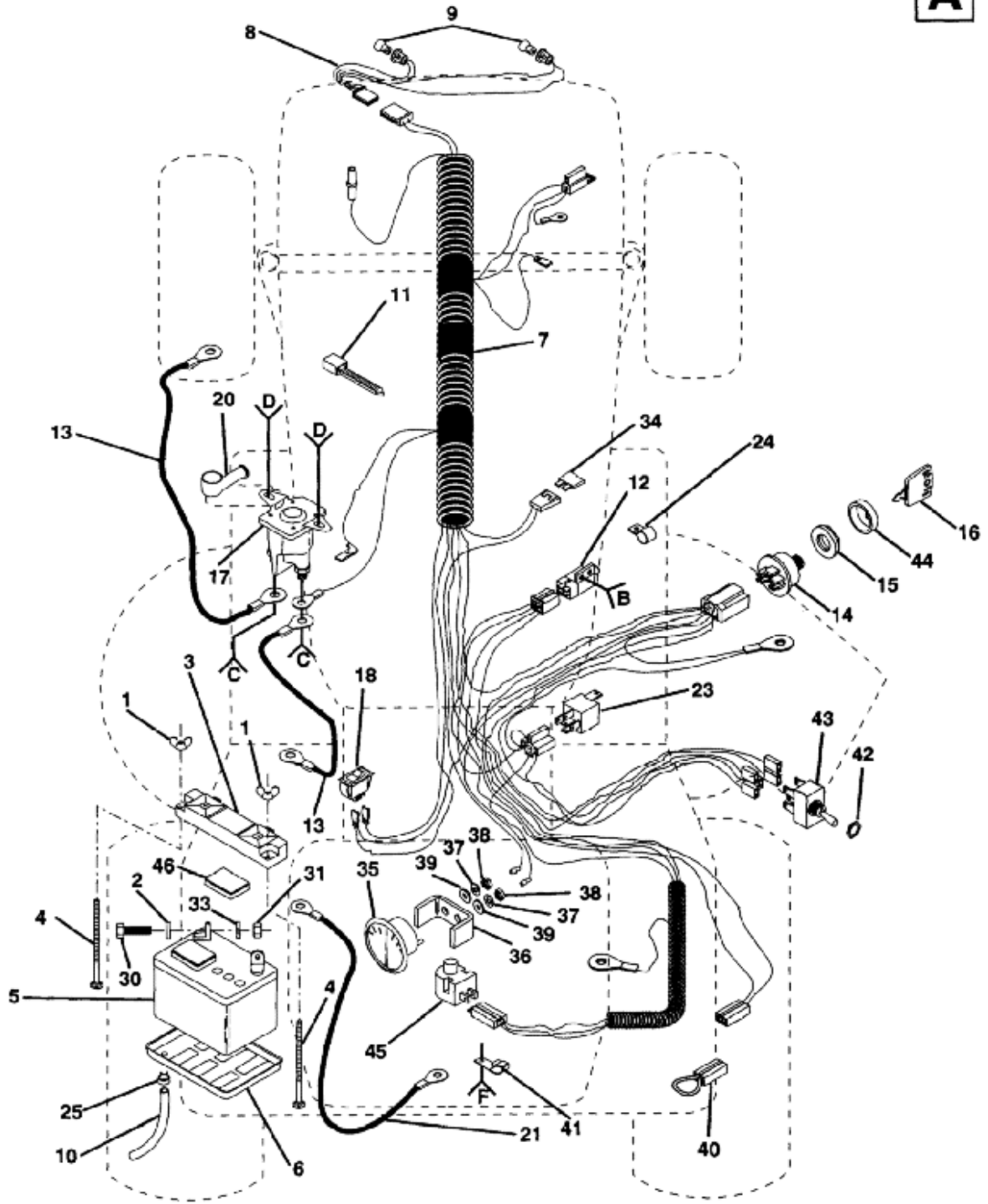
**Reserve onderdelen**

**Repuestos**

**Reservdelar**

# ELECTRICAL

**A**



- B**  
22
- C**  
26  
27
- D**  
28  
32  
29
- F**  
28  
19

# ELECTRICAL



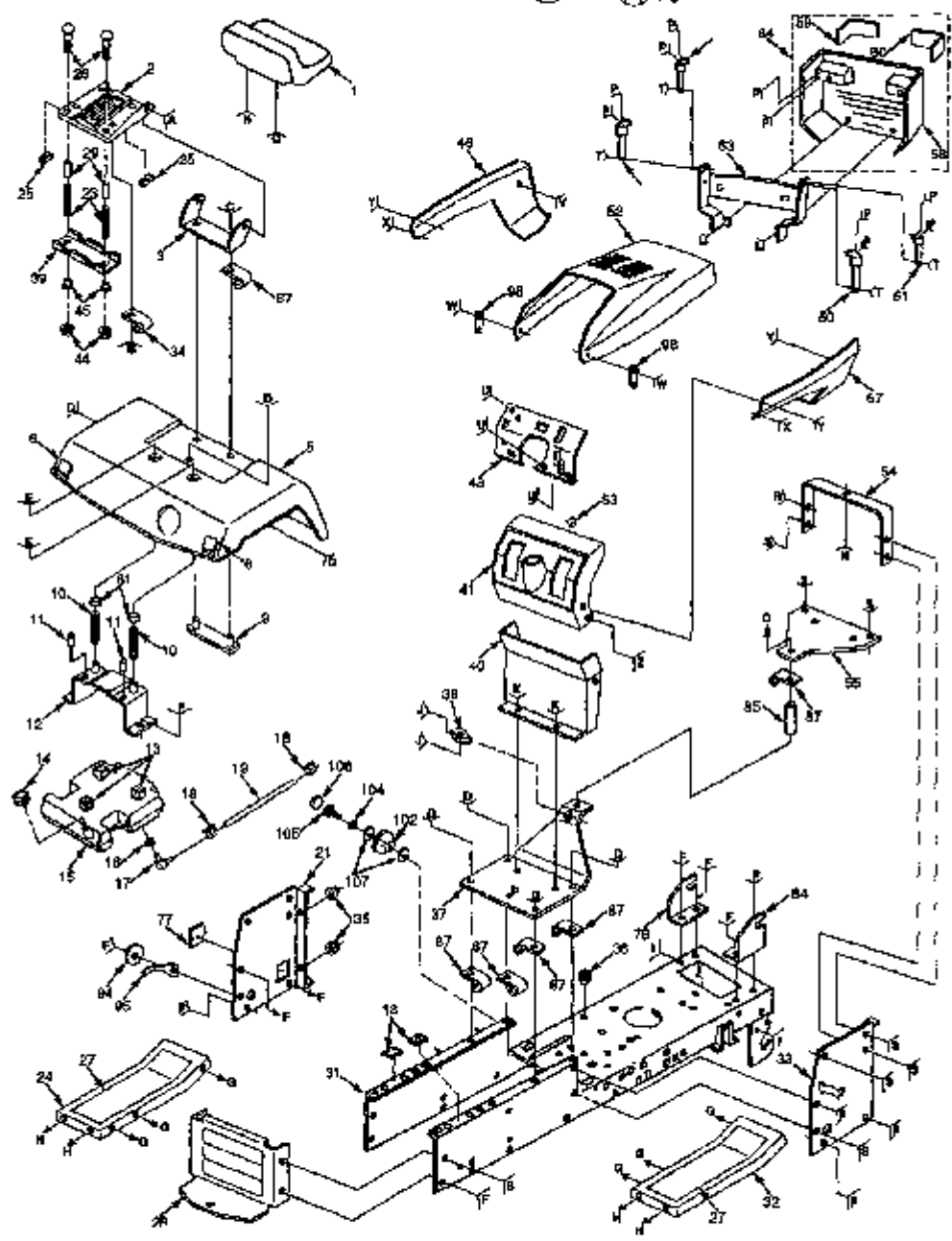
KEY PART NO.	NO.	DESCRIPTION
1	532 12 31-98	Nut, Wing 1/4-20
2	819 09 10-16	Washer 9/32 x 5/8 x 16 Ga.
3	532 10 24-76	Guard, Terminal
4	872 24 04-60	Bolt, Battery (Bolt, Carriage 1/4-20 x 7-1/2)
5	532 12 12-65	Battery AYP
5	506 78 88-01	Battery Husqvarna
6	532 00 76-03	Tray, Battery
7	532 13 26-41	Harness, Ignition
8	532 12 74-41	Harness, Light Socket
9	532 00 76-62	Bulb, Light
10	532 00 76-97	Tube, Battery Tray
11	532 12 47-56	Cable, Tie
12	532 10 95-53	Switch, Interlock, Clutch
13	532 12 47-70	Cable, Battery
14	532 12 51-04	Ignition, Switch
15	532 12 42-11	Nut, Ignition
16	532 12 21-47	Key
17	532 10 90-81	Solenoid
18	532 11 07-12	Switch
19	873 68 04-00	Nut, Crownlock 1/4-20
20	532 13 15-63	Terminal Cover (For Solenoid)
21	532 00 47-99	Cable, Battery (Battery to Ground)
22	817 02 10-08	Screw, Hex Tap Hd. #10-24 UNC x 1/2 Type T
23	532 10 97-48	Relay
24	532 00 41-71	Clip
25	532 10 95-96	Clamp, Hose
26	810 04 04-00	Washer, Lock 1/4
27	873 95 10-00	Nut, Hex, Jam 1/4-20
28	874 76 04-12	Bolt, Hex 1/4-20 x 3/4
29	873 22 04-00	Nut, Hex, Keps 1/4-20
30	874 76 04-12	Bolt, Hex 1/4-20 x 3/4
31	873 22 04-00	Nut, Hex 1/4-20
32	810 04 04-00	Washer, Lock, 1/4
33	810 04 04-00	Washer, Lock 1/4
34	532 10 88-24	Fuse
35	532 12 49-00	Ammeter
36	532 13 17-08	Bracket, Ammeter
37	810 04 04-00	Washer, Lock 1/4
38	873 91 10-00	Nut
39	819 09 08-16	Washer 7/32 x 1/2 x 18 Gauge
40	532 10 25-01	Loop, Wire
41	532 12 49-95	Clip, Insulated
42	532 00 40-22	Nut, Hex
43	532 12 60-16	Switch, PTO
44	532 12 36-20	Cover, Switch Key
45	532 12 13-05	Switch, Seat
46	532 12 12-64	Cap, Battery

**NOTE:** All component dimensions given in U.S. inches  
1 inch = 25.4 mm

# CHASSIS AND ENCLOSURES

**B**

- A 65
- B 22
- C 70
- D 71
- E 62  
 70
- F 72
- G 74  
 70
- H 96  
 93  
 70
- I 103
- J 75  
 66  
 20



- K 30  
 80
- L 8  
 4
- M 49  
 81
- N 86
- O 82  
 66
- P 79
- Q 73  
 69
- R 76  
 67  
 70
- S 96  
 70
- T 88  
 89
- U 30  
 92  
 83
- V 68  
 81
- W 48  
 47  
 90  
 91  
 42
- X 97  
 100  
 101  
 99
- Y 56
- Z 76  
 93  
 93  
 70

# CHASSIS AND ENCLOSURES

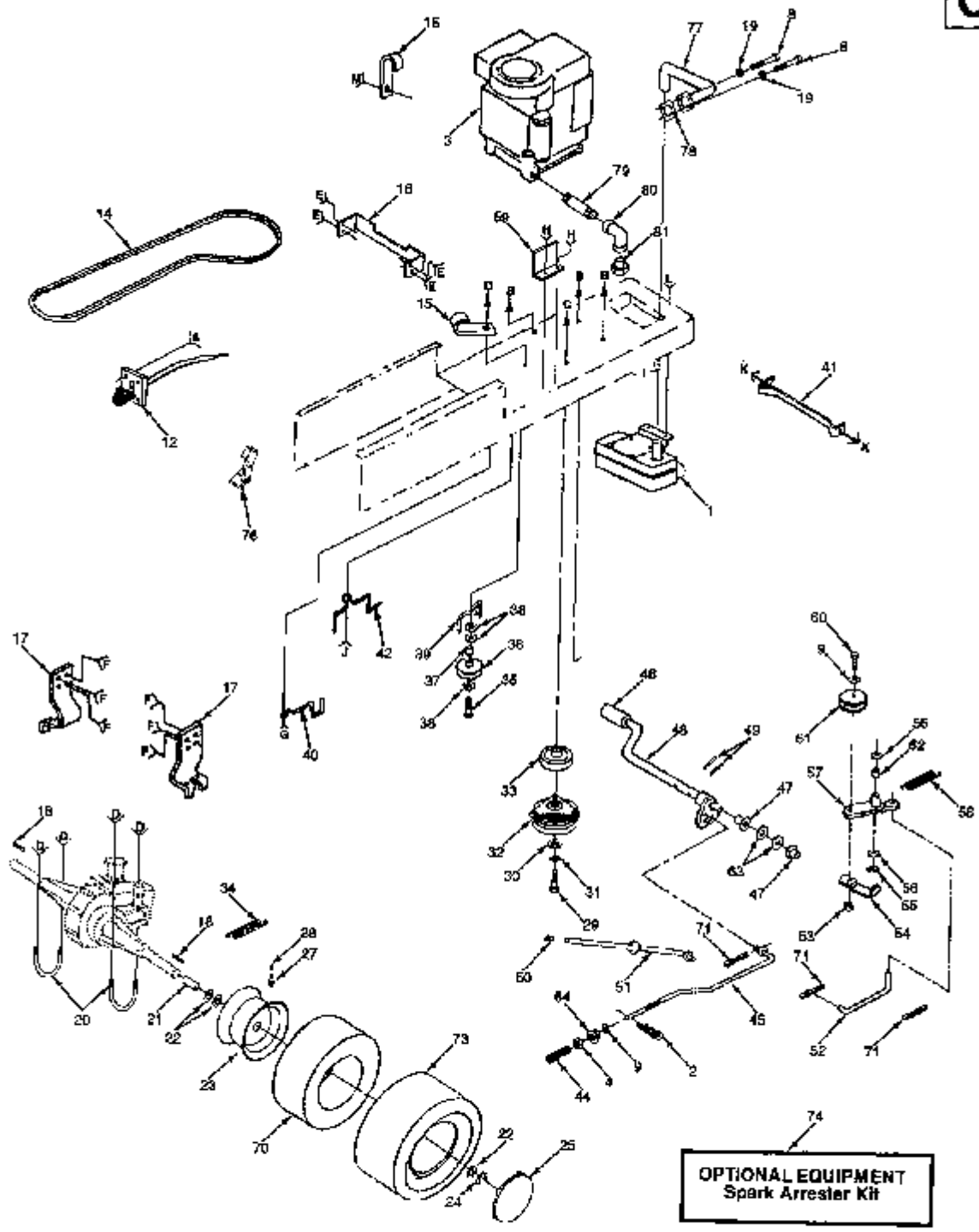


KEY PART NO.	NO.	DESCRIPTION	KEY PART NO.	NO.	DESCRIPTION
1	532 12 41-85	Seat	58	532 12 73-20	Grill
2	532 13 14-51	Pan, Seat	59	532 12 42-50	Lens, L.H.
3	532 12 66-56	Bracket, Pivot, Seat	60	532 12 42-51	Lens, R.H.
4	819 09 14-13	Washer 9/32 x 7/8 x 16 Gauge	61	532 12 42-38	Cap Spring, Seat
5	532 12 49-27	Fender	62	819 13 16-11	Washer 13/32 x 1 x 14 Ga.
6	532 10 62-02	Reflector, Tail Light	63	532 12 45-74	Support, Grill Assembly
7	532 12 12-35	Spacer	64	532 12 73-20	Grill Assembly (Includes Key Numbers 58, 59, and 60)
8	874 76 04-44	Bolt, Fin, Hex 1/4-20 x 2-1/2	65	532 10 55-29	Bolt, Shoulder 5/16 - 18
9	532 10 55-11	Strap, Fender	66	873 68 05-00	Nut, Crownlock 5/16 - 18
10	532 12 41-81	Spring, Compression	67	810 04 06-00	Washer, Lock, External Tooth 3/8
11	532 10 55-31	Nut, Push	68	532 00 12-60	Spacer
12	532 10 55-09	Bracket, Fender	69	819 17 19-12	Washer 17/32 x 1 - 3/16 x 12 Gauge
13	532 00 64-31	Pad, Spacer	70	873 68 06-00	Nut, Crownlock 3/8 - 16
14	532 12 44-62	Cap, Fuel	71	817 49 06-08	Screw, Hex, Washer Thrdol. 3/8 - 16 x 1/2
15	532 10 60-20	Tank, Fuel	72	817 49 06-08	Screw, Hex Washer Thrdol. 3/8 - 16 x 3/4
16	532 00 36-45	Bushing	73	532 12 00-68	Knob, Seat 1/2"
17	532 12 49-51	Stem, Tank, Fuel	74	872 11 06-08	Bolt, Carriage 3/8 - 16 x 3/4
18	532 12 34-87	Clamp, Hose	75	817 21 10-10	Screw, Hex, Tap #10 - 16 x 1/2
19	532 00 85-42	Line, Fuel	76	874 76 06-24	Bolt, Hex 3/8 - 16 x 1
20	873 95 10-00	Nut, Keps #10	77	532 12 17-94	Cover, Access
21	532 12 41-18	Panel, Dash L.H.	78	532 11 08-52	Bracket, Assembly, L.H.
22	874 64 10-08	Screw, Pan Head #10-32	79	873 22 04-00	Nut, Hex, Keps 1/4 - 20 UNC
23	532 12 12-50	Spring, Compression	80	873 68 05-00	Nut, Hex, Keps 5/16 - 18 UNC
24	532 12 48-99	Footrest, L.H.	81	873 22 04-00	Nut, Fin, Hex 1/4 - 20 UNC
25	532 12 12-51	Strip, Foam	82	874 76 05-40	Bolt, Hex 5/16 - 18 x 2
26	872 04 04-10	Bolt, Carriage 1/4-20 x 1-3/8	83	873 68 05-00	Nut, Keps 5/16 - 18
27	532 10 82-56	Pad, Footrest	84	532 11 08-53	Bracket Assembly, R.H.
28	532 12 78-66	Drawbar	85	532 12 12-36	Spacer
29	532 13 43-00	Spacer, Split .28 x .96	86	532 12 70-18	Bolt, Shoulder 5/16 - 18 x .62
30	874 76 05-14	Screw, Mach. Cr. Threaded 5/16-18 x 3/4	87	532 00 27-51	Clip, Insulated
31	532 13 10-52	Chassis	88	532 00 76-05	Bolt, Shoulder 1/4 - 20
32	532 12 49-14	Footrest R.H.	89	873 68 04-00	Nut, Crownlock 1/4 - 20
33	532 13 37-48	Panel, Dash, R.H.	90	817 02 10-08	Screw, #10 - 24 x 1/2
34	532 00 41-71	Clip, Insulated	91	810 04 04-00	Washer, Lock #10
35	532 00 91-51	Grommet, Split	92	819 11 14-16	Washer 11/32 x 11/16 x 16 Gauge
36	532 12 49-34	Grommet	93	819 13 13-16	Washer 13/32 x 13/16 x 12 Gauge
37	532 12 11-95	Saddle	94	532 12 05-29	Washer, Nylon .44 x .75 x .032
38	532 12 47-20	Bushing, Steering	95	532 12 39-33	Pointer, Height, Indicator
39	532 12 12-46	Bracket, Switch Mount	96	874 76 06-12	Bolt, Hex 3/8-16 x 3/4
40	532 10 48-05	Dash Assembly, Lower	97	874 98 10-28	Screw, Mach. Cr. Pan #10-24 x 1 - 1/4
41	532 12 41-82	Dash	98	532 10 98-08	Latch, Hood
42	532 12 50-04	Nut, Weld	99	873 95 10-00	Nut, Keps #10-24
43	532 12 17-23	Plate, Dash	100	532 00 72-06	Spacer, Split #10 x 3/4
44	873 22 04-00	Locknut, Hex, Large, Flange	101	819 09 08-16	Washer 7/32 x 1/2 x 18 Gauge
45	532 12 12-48	Bushing, Snap	102	532 12 39-34	Scale, Ind. Hgt.
46	532 12 50-09	Panel, Side, L.H.	103	817 02 10-08	Screw, Tap Hex #10-24 x 1/2
47	532 11 03-57	Washer, Cap, Snap	104	810 04 05-00	Washer, Lock, Heavy, Helical, Spring
48	532 11 03-56	Cap, Snap	105	874 76 06-24	Bolt, Hex Fin. 5/16-18 UNC
49	810 04 04-00	Washer, Lock, External Tooth 1/4	106	532 12 39-35	Plug, Hole
50	532 10 67-84	Strap Assembly, Hinge, Rear	107	819 11 24-10	Washer, 11/32 x 1-1/2 10 Gauge
51	532 10 46-18	Strap Assembly, Hinge, Front			
52	532 12 50-07	Hood			
53	532 00 54-79	Plug, Button			
54	532 12 41-30	Support, Dash			
55	532 10 69-65	Plate, Support, Battery			
56	532 12 31-98	Nut, Wing 1/4 - 20			
57	532 12 50-08	Panel, Side, R.H.			

**NOTE:** All component dimensions given in U.S. inches  
1 inch = 25.4 mm

# DRIVE

C



- | A  | B  | C  | D  | E  | F  | G  | H  | J  | K  | L  | M  |
|----|----|----|----|----|----|----|----|----|----|----|----|
| 65 | 66 | 68 | 53 | 68 | 72 | 69 | 43 | 69 | 11 | 82 | 63 |
|    |    | 67 |    | 53 |    | 38 |    | 75 | 10 |    |    |
|    |    |    |    |    |    | 53 |    | 53 |    |    |    |

# DRIVE



## KEY PART NO. NO.

## DESCRIPTION

1	532 12 30-75	Muffler
2	532 12 47-88	Clip, Hairpin
3	-----	Engine 12.5 HP Briggs & Stratton Model Number 286707
4	873 35 06-00	Nut, Jam, Hex 3/8-16 UNC
8	874 76 05-14	Screw, Hex, Cap 5/16-18 x 5/8
9	819 13 13-16	Washer 13/32 x 13/16 x 16 Gauge
10	873 68 05-00	Nut, Crownlock 5/16-18
11	872 14 05-06	Bolt, Carriage 5/16-18 x 3/4
12	532 13 27-54	Control, Throttle
14	532 12 34-61	V-Belt, Drive
15	532 00 27-51	Clip, Insulated
16	532 12 11-87	Bracket, Mounting, Hydro T/A
17	532 12 66-49	Bracket, Transaxle
18	532 12 35-83	Key Square 1/4 x 2
19	810 04 05-00	Washer, Lock, Hvy. Helical Spring
20	532 12 11-89	U-Bolt 3/8-16 x 2.83
21	532 12 11-99	Spacer, Split
22	532 12 17-48	Washer 1-1/32 x 1-5/8 x 16 Gauge
23	532 10 61-08	Rim, Rear 8"
24	812 00 00-01	E-Ring
25	532 12 45-78	Cover, Wheel
27	532 06 51-39	Stem, Valve
28	532 05 91-92	Cap, Valve
29	871 17 07-68	Bolt, Fin. Hex 7/16-20 x 4-1/4 Gr. 5
30	532 12 61-97	Washer 15/32 ID x 1-1/2 OD x .250
31	810 04 07-00	Washer, Lock 7/16
32	532 10 82-18	Clutch, Electric
33	532 10 98-41	Pulley, Engine
34	532 11 04-22	Spring, Brake Return
35	874 76 06-44	Bolt, Hex 3/8-16 x 2-3/4
36	532 00 48-59	Idler, Flat
37	532 00 44-70	Spacer
38	819 13 13-16	Washer 13/32 x 13/16 x 12 Gauge
39	532 10 90-70	Retainer, Belt
40	532 12 99-21	Keeper, Belt, Engine, L.H.
41	532 10 91-69	Retainer, Clutch Assembly
42	532 13 14-02	Guide, Belt Drive Mower R.H.
43	817 02 10-08	Screw, Hex, Tap #10-24 x 1/2
44	532 10 68-88	Spring, Rod, Brake
45	532 13 26-54	Rod, Brake
46	532 12 35-33	Cover, Pedal

## KEY PART NO. NO.

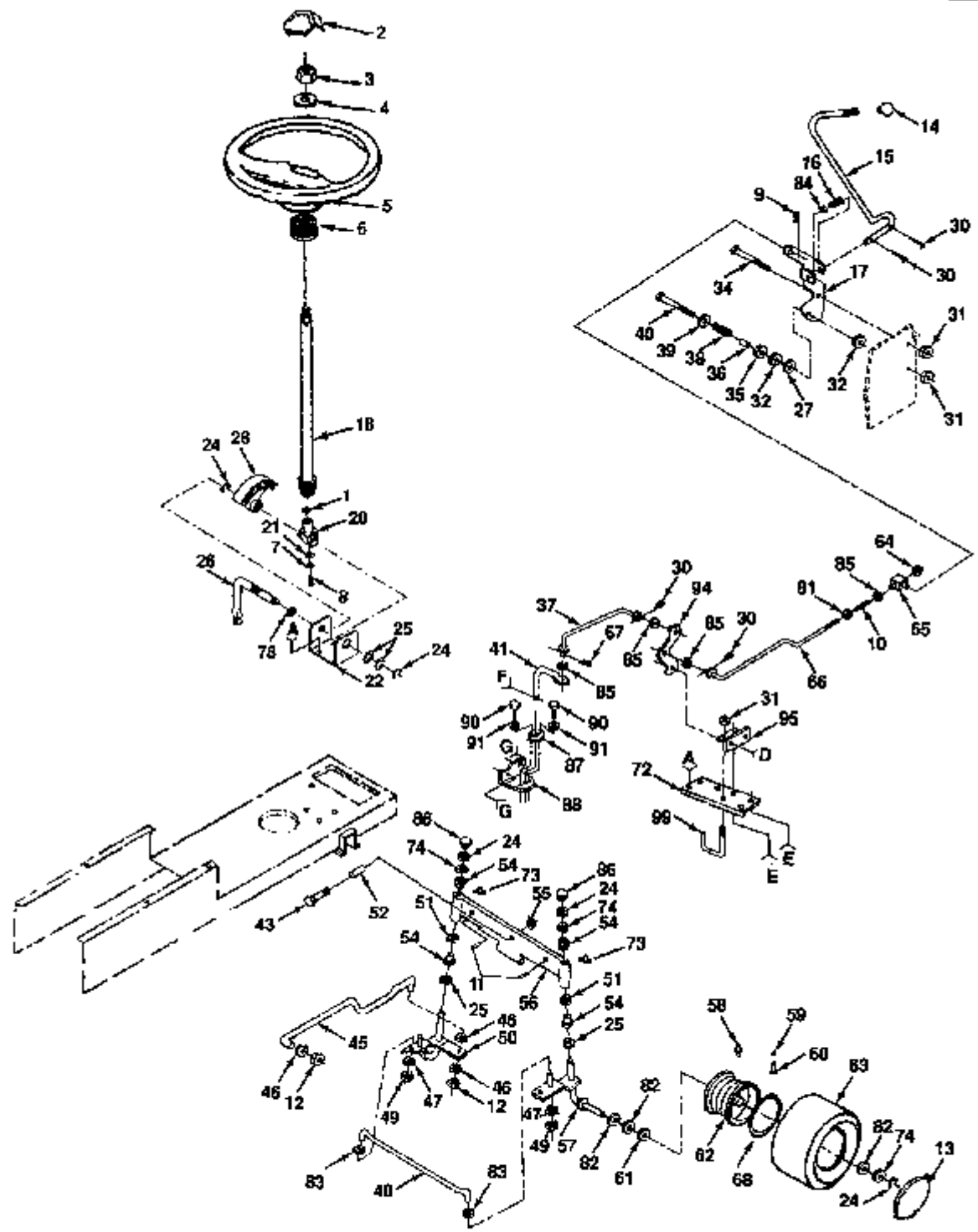
## DESCRIPTION

47	532 12 01-83	Bearing, Nylon
48	532 12 24-24	Shaft, Assembly, Foot Pedal
49	532 00 28-82	Pin, Roll 3/16 x 1
50	532 07 16-73	Cap, Plunger
51	532 13 32-61	Rod, Brake, Park
52	532 10 57-10	Link, Clutch
53	873 68 06-00	Nut, Crownlock 3/8-16
54	532 12 32-05	Retainer, Belt
55	812 00 00-39	Klip Ring
56	532 11 08-12	Washer, Hardened
57	532 12 37-89	Arm Assembly, Idler
58	532 10 57-09	Spring, Return, Clutch
59	532 10 82-36	Bracket, Switch
60	874 76 06-24	Bolt, Hex 3/8-16 x 1 -1/2
61	532 12 77-83	Pulley, Idler
62	532 10 57-06	Bearing
63	819 21 16-16	Washer 21/32 x 1 x 16 Gauge
64	873 68 06-00	Locknut, Hex w/Washer Insert 3/8-16 UNC ZN
65	874 76 04-12	Screw, Hex, Thread Cut 1/4-20 x 5/8
66	874 76 06-24	Screw, Thrdrol. 3/8-16 x 1-1/2
67	810 04 06-00	Washer, Lock, External Tooth 3/8
68	874 76 06-12	Bolt, Hex 3/8-16 x 3/4
69	874 76 06-24	Bolt, Hex 3/8-16 x 1
70	532 12 49-26	Tube (not furnished with tractor)
71	876 02 04-16	Pin, Cotter 1/8 x 3/4
72	874 76 06-12	Screw, Hex, Thrdrol. 3/8-16 x 3/4
73	532 10 62-68	Tire, Rear
74	532 12 18-51	Spark Arrester Kit
75	819 13 20-12	Washer 13/32 x 1-1/4 x 12
76	532 13 30-97	Stop/Throttle
77	532 12 30-74	Pipe, Exhaust
78	532 12 55-93	Gasket
79	813 28 03-24	Nipple, Pipe 3/8 NPT x 3"
80	813 20 03-00	Elbow, Std. 90 Degree 3/8-18 NPT
81	-----	Plug, Oil Drain (Order from Engine Manufacturer)
82	874 76 05-14	Screw, Thrdrol. 5/16-18 x 3/4
83	873 68 06-00	Nut, Keps 3/8-16

**NOTE:** All component dimensions given in U.S. inches  
1 inch = 25.4 mm

# STEERING ASSEMBLY

**D**



- |          |          |          |          |          |
|----------|----------|----------|----------|----------|
| <b>A</b> | <b>D</b> | <b>E</b> | <b>F</b> | <b>G</b> |
|          |          |          |          |          |
| 33       | 96       | 97       | 92       | 89       |
|          |          |          |          |          |
|          | 98       | 31       | 93       |          |



# STEKRING ASSEMBLY

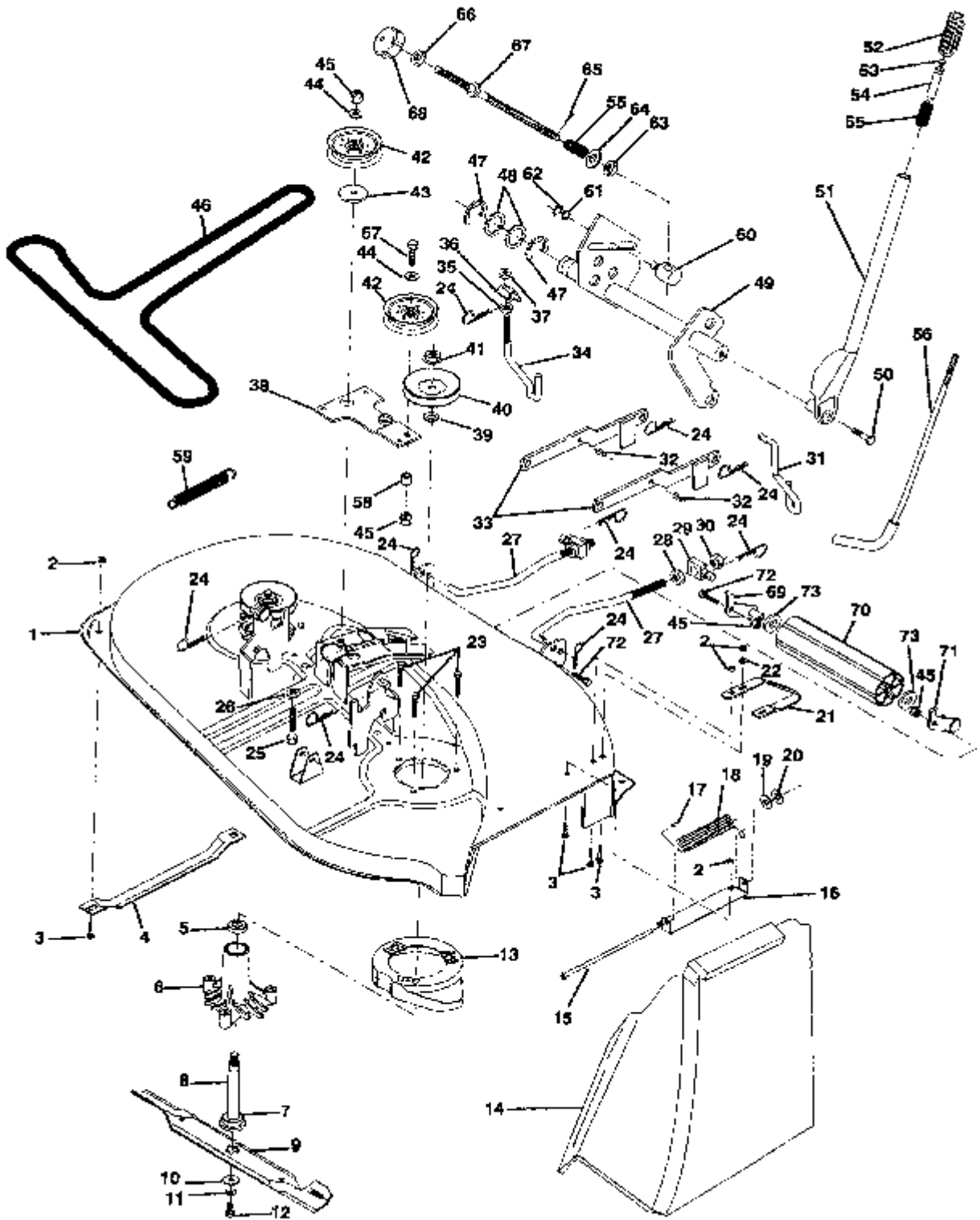


KEY NO.	PART NO.	DESCRIPTION	KEY NO.	PART NO.	DESCRIPTION
1	532 05 70-79	Washer Insert,	51	819 27 20-16	Washer 27/32 x 1-1/4 x 16 Gauge
2	532 12 44-16	Steering Wheel	52	532 11 04-38	Spacer, Bearing
3	873 36 08-00	Nut, Jam, Toplock 1/2-20	54	532 12 49-37	Bearing
4	532 10 07-12	Washer	55	873 90 10-00	Locknut, Flange 5/8-11
5	532 12 44-15	Wheel, Steering	56	532 10 80-75	Axle, Front
6	532 10 07-11	Adapter, Steering Wheel	57	532 13 04-59	Spindle, R.H.
7	810 04 04-00	Washer, Lock 1/4	58	532 00 02-78	Fitting, Grease
8	874 76 04-12	Screw, Socket, Hex 1/4-20 x 5/8	59	532 06 51-39	Stem, Valve
9	532 00 49-21	Spring, Retainer	60	532 05 91-92	Cap, Valve
10	532 10 26-70	Spring, Compression	61	532 00 90-40	Bearing
11	532 13 26-24	Pin, Axle	62	532 10 67 32	Rim, Front
12	873 61 06-00	Nut, Hex, Fin 3/8-24 UNF	63	532 10 62-22	Tire, Front
13	532 12 45-77	Cover, Wheel	64	873 68 06-00	Locknut, Hex, w/Wsh. 3/8-16
14	532 12 12-74	Knob, Gear Shift	65	532 10 82-12	Trunnion
15	532 11 08-45	Rod, Control	66	532 12 17-50	Rod, Control, Adjustable
16	532 12 16-31	Spring, Torsion	67	532 12 47-88	Clip, Hairpin
17	532 10 81-96	Bracket, Control Rod	68	532 05 99-04	Tube, Tire Front
18	532 12 87-62	Shaft, Steering	72	532 12 31-86	Bracket, Chassis, Reinforcement, Hydro
20	532 12 40-35	Support, Shaft	73	532 12 48-36	Fitting, Grease
21	532 12 66-84	Washer, Shim 1/4 x 5/8 x .062	74	532 12 17-48	Washer 25/32 x 1 -5/8 x 16 Gauge
22	532 12 40-36	Bracket, Steering	78	532 10 98-16	Nyliner, Snap-In
24	812 00 00-29	Ring, Klip	81	819 13 12-10	Washer 13/32 x 3/4 x 12 Gauge
25	532 12 49-31	Bearing, Thrust	82	532 12 17-49	Washer 25/32 x 1 -1/4 x 16 Gauge
26	532 12 75-01	Shaft, Pitman	83	819 11 14-16	Washer 11/32 x 3/4 x 16 Gauge
27	532 10 89-72	Washer, Friction	84	819 15 16-16	Washer 15/32 x 15/16 x 16 Gauge
28	532 12 40-34	Gear, Sector	85	532 11 07-39	Washer, Spring
30	876 02 04-16	Pin, Cotter 1/8 x 3/4	86	532 12 12-32	Cap, Spindle
31	873 68 06-00	Nut, Crownlock 3/8-16	87	532 12 12-17	Guide, Control
32	532 10 82-00	Spacer, Nylon	88	532 12 12-16	Bracket, Control Guide
33	874 76 06-12	Screw, Hex Washer Thread Rolling 3/8-16 x 3/4	89	874 76 05-14	Screw, Hex Washer Thread Rolling S/16-18 x 3/4 Type TT
34	532 10 85-18	Bolt, Hex Shoulder 3/8-16 x 1 -3/8	90	817 02 10-08	Screw, Tap Hex #10-24 UNC x .625
35	819 21 16-16	Washer 21/32 x 1-1/4 x 16 Gauge	91	819 09 08-16	Washer 7/32 x 1/2 x 16 Gauge
36	532 10 82-01	Spacer	92	874 56 10-14	Screw, Hex Socket Hd. #10-24 UNC
37	532 12 12-02	Link, Control, Pump	93	532 06 91-80	Locknut #10-24 UNC
38	532 10 88-44	Spring, Compression	94	532 12 12-04	Bellcrank
39	819 13 20-12	Washer 13/32 x 1-1/4 x 12 Gauge	95	532 12 12-06	Bracket, Bellcrank, Pivot
40	874 76 06-48	Bolt, Hex 3/8-16 x 3	96	532 10 05-36	Bolt, Shoulder
41	532 12 12-09	Lever, Pump Control	97	874 76 06-24	Bolt, Hex, Fin 3/8-16 UNC x 1
43	874 01 10-56	Bolt, Hex 5/8-11 UNC x3-1/2	98	873 68 05-00	Nut, Crownlock 5/16-18
45	532 13 04-68	Link, Drag	99	532 12 11-90	Keeper, Centerspan
46	810 04 06-00	Washer, Lock 3/8			
47	810 04 05-00	Washer, Lock 5/16			
48	532 13 04-67	Rod, Tie			
49	873 81 05-00	Nut, Hex 5/16-24 UNF			
50	532 13 04-60	Spindle, L.H.			

NOTE: All component dimensions given in U.S. inches.  
1 inch = 25.4 mm

# MOWER

E



# MOWER



## KEY PART NO NO.

## DESCRIPTION

1	532 12 93-65	Mower Asm.
2	873 68 05-00	Nut, Crownlock 5/16-18
3	872 14 05-06	Bolt, Carriage 5/16-18 x 3/4
4	532 12 50-74	Runner, LH
5	532 11 04-85	Bearing, Ball, Mandrel
6	532 12 87-44	Housing Mandrel
7	532 12 98-95	Bearing, Ball
8	532 13 31-72	Shaft & Bearing Assembly (Includes Key #7)
9	532 12 78-42	Blade, Mower, High Performance
10	532 12 99-62	Washer, Hard, Mower, Vented
11	810 04 06-00	Washer, Lock Hvy 3/8
12	532 85 08-57	Bolt, Blade 3/8-24 x 1-1/4 Gr. 8
13	532 12 89-61	Stripper, Mower, Vented
14	532 10 67-36	Shield, Deflector
15	532 10 67-35	Rod, Hinge
16	532 10 58-96	Bracket, Deflector, Mower
17	532 10 53-04	Cap, Sleeve
18	532 10 67-34	Spring, Deflector
19	819 11 14-16	Washer 11/32 x 5/8 x 16 Ga.
20	532 11 04-52	Nut, Push
21	532 12 87-72	Runner, RH
22	819 11 14-16	Washer 11/32 x 3/4 x 16 Ga.
23	874 76 05-28	Bolt, Mandrel
24	532 12 46-70	Retainer, Spring
25	874 76 06-36	Bolt, Carriage 3/8-16 x 2
26	819 13 16-11	Washer
27	532 12 72-18	Link Asm., Front
28	873 68 08-00	Nut, Jam Hex 1/2-13 UNC
29	532 13 01-71	Trunnion
30	873 68 08-00	Nut, Crownlock 1/2-13 UNC
31	532 12 72-24	Link, Lift, RH
32	532 12 87-63	Pin, Spring 5/16-3/4
33	532 13 37-10	Arm, Suspension, Rear
34	532 12 72-23	Link, Lift, LH
35	873 71 07-00	Nut, Hex Jam ASF 7/16-20 UNF
36	532 11 04-47	Trunnion, Lift
37	873 71 07-00	Nut, Crownlock Jam 7/16-24 UNF
38	532 13 38-40	Idler, Arm
39	532 12 99-63	Washer, Spacer, Mower, Vented

## KEY PART NO. NO.

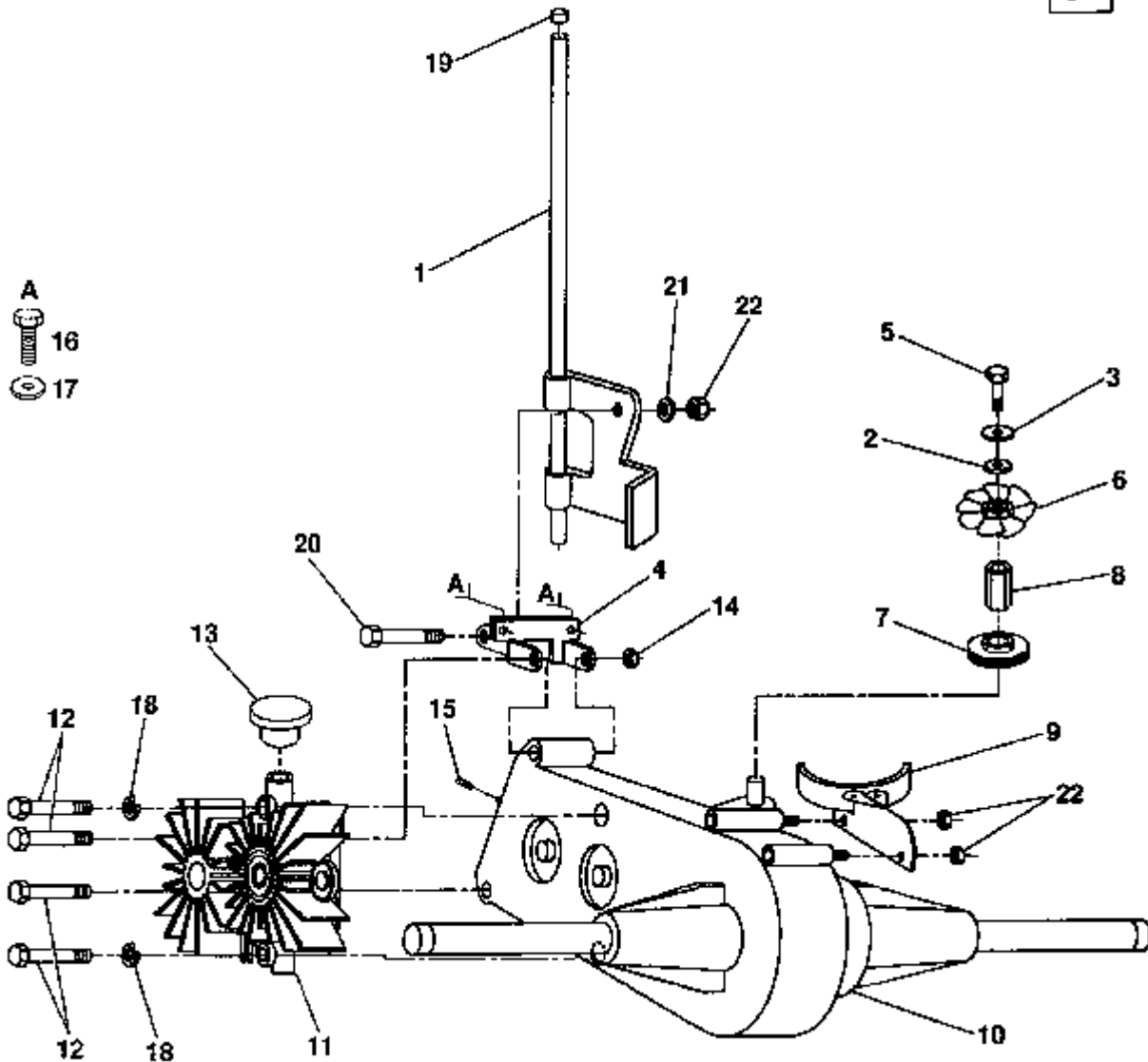
## DESCRIPTION

40	532 12 92-06	Pulley, Mandrel, Single
41	873 05 09-00	Nut, Flangelock 9/16
42	532 13 14-94	Pulley, Idler, Flat
43	532 12 20-52	Spacer, Retainer
44	819 13 13-16	Washer 13/32 x 13/16 x 16 Ga.
45	873 68 06-00	Nut, Crownlock 3/8-16
46	532 13 12-90	Belt
47	812 00 00-02	Ring, E
48	819 21 16-16	Washer 21/32 x 7/8 x 16 Ga.
49	532 13 19-26	Shaft Asm., Lift
50	874 76 06-24	Bolt, Hex 3/8-16 x 1 -1/2
51	532 12 30-96	Lever, Lift
52	532 12 56-31	Grip, Handle
53	532 12 59-25	Button, Plunger
54	532 12 59-25	Plunger, Lever, Lift
55	532 12 48-74	Spring
56	532 12 10-06	Rod, Lever
57	874 76 06-44	Bolt, Hex 3/8-16 x 2-3/4
58	532 13 28-23	Spacer, Spring, Idler
59	532 13 19-50	Spring, Extension
60	532 11 08-10	Trunnion, Depth Stop
61	819 15 12-16	Washer 15/32 x 3/4 x 16 Ga.
62	812 00 00-36	Ring, Klip
63	532 11 08-07	Nut, Special
64	819 13 10-16	Washer 13/32 x 5/8 x 16 Ga.
65	876 02 03-12	Pin, Cotter 3/32 x 1/2
66	873 35 06-00	Nut, Hex, Jam 3/8-16 UNC
67	532 11 07-29	Rod, Adjust, Lift
68	532 12 18-91	Knob, Infinite
69	532 13 22-74	Bracket Asm., Roller, Nose, LH
70	532 13 22-64	Roller, Nose
71	532 13 22-73	Bracket Asm., Roller, Nose, RH
72	874 76 06-24	Bolt, Hex 3/8-16 x 1
73	819 17 16-16	Washer 17/32 x 7/8 x 16 Ga.
--	532 13 07-94	Mandrel Assembly (Includes Key Nos. 5-8,10-12, 39 and 41)
--	532 13 21-84	Deck Assembly Complete (Does Not Include Nose Roller Or Brackets)

**NOTE:** All component dimensions given in U.S. inches  
1 inch = 25.4 mm

# TRANSAXLE AND PUMP ASSEMBLY

**F**

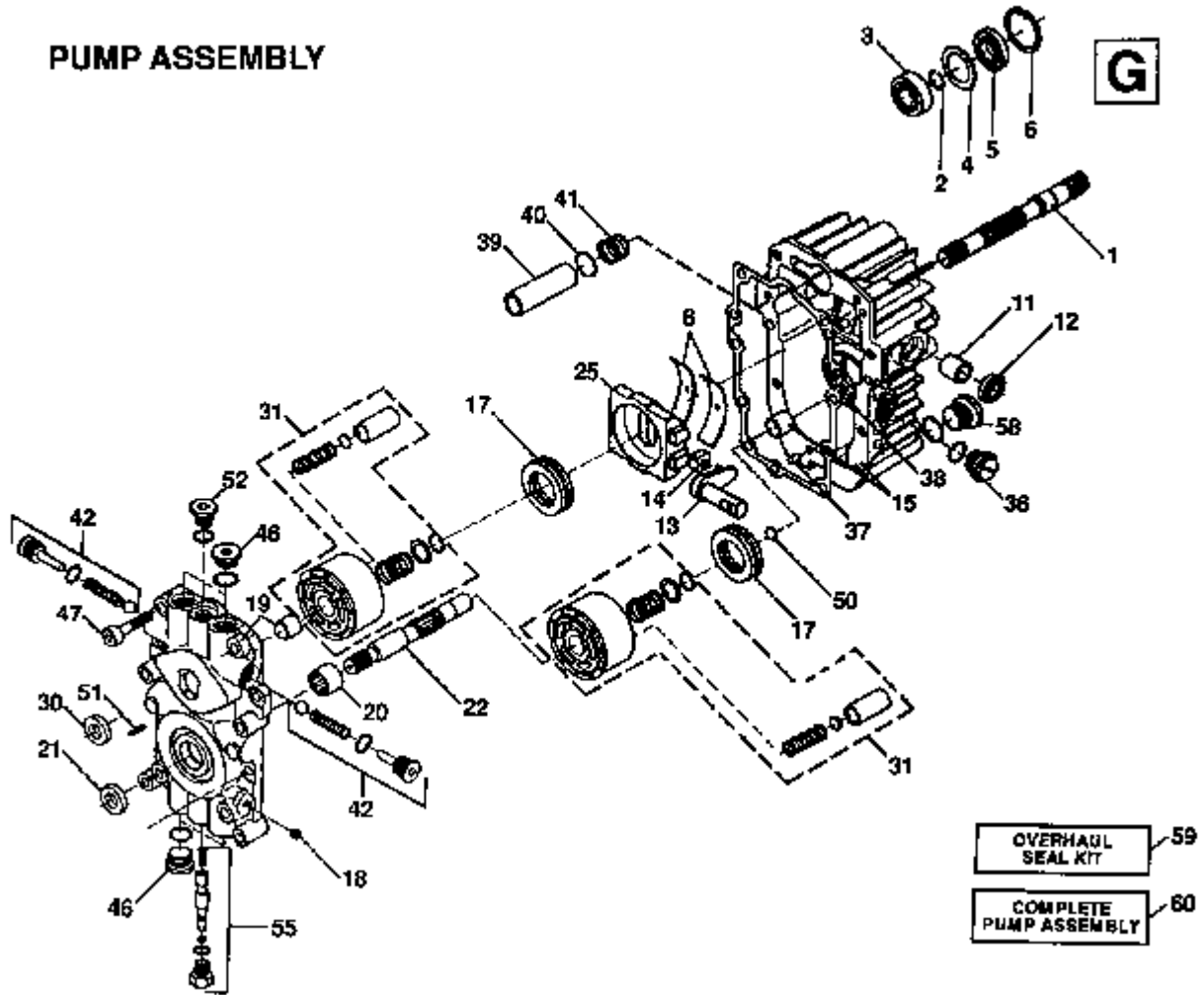


KEY NO.	PART NO.	DESCRIPTION
1	532 12 36-34	Free Wheel Control Assembly
2	810 09 14-13	Washer 9/32 x 1-1/4 x 16 Gauge
3	810 04 04-00	Washer, Lock 1/4
4	532 12 11-88	Bracket, Pnt., Mounting, Differential
5	874 78 04-12	Bolt, Hex 1/4-20 UNC x 3/4
6	532 12 11-86	Fan, Hydro, 8"
7	532 12 11-80	Pulley, Transaxle
8	532 12 12-11	Standoff, Fan, Hydro
9	532 12 11-82	Guard Assembly, Belt
10	532 12 14-31	Differential Assembly
11	532 12 14-30	Pump Assembly
12	874 76 05-72	Bolt, Hex, Fin 5/16-18 UNC x 4-1/2
13	532 12 13-23	Reservoir, Pump

KEY NO.	PART NO.	DESCRIPTION
14	873 68 05-00	Nut, Crownlock 5/16-18
15	532 12 12-50	Spring, Compression
16	874 76 06-12	Bolt 3/8-16 x 3/4
17	873 68 06-00	Nut 3/8-16 UNC
18	810 04 05-00	Washer, Lock
19	532 07 16-73	Cap
20	532 00 76-05	Bolt, Shoulder 1/4-20 UNC
21	532 12 05-29	Washer, Nylon
22	873 68 04-00	Nut, Crownlock 1/4-20 UNC

**NOTE:** All component dimensions given in U.S. inches.  
1 inch = 25.4 mm

# PUMP ASSEMBLY

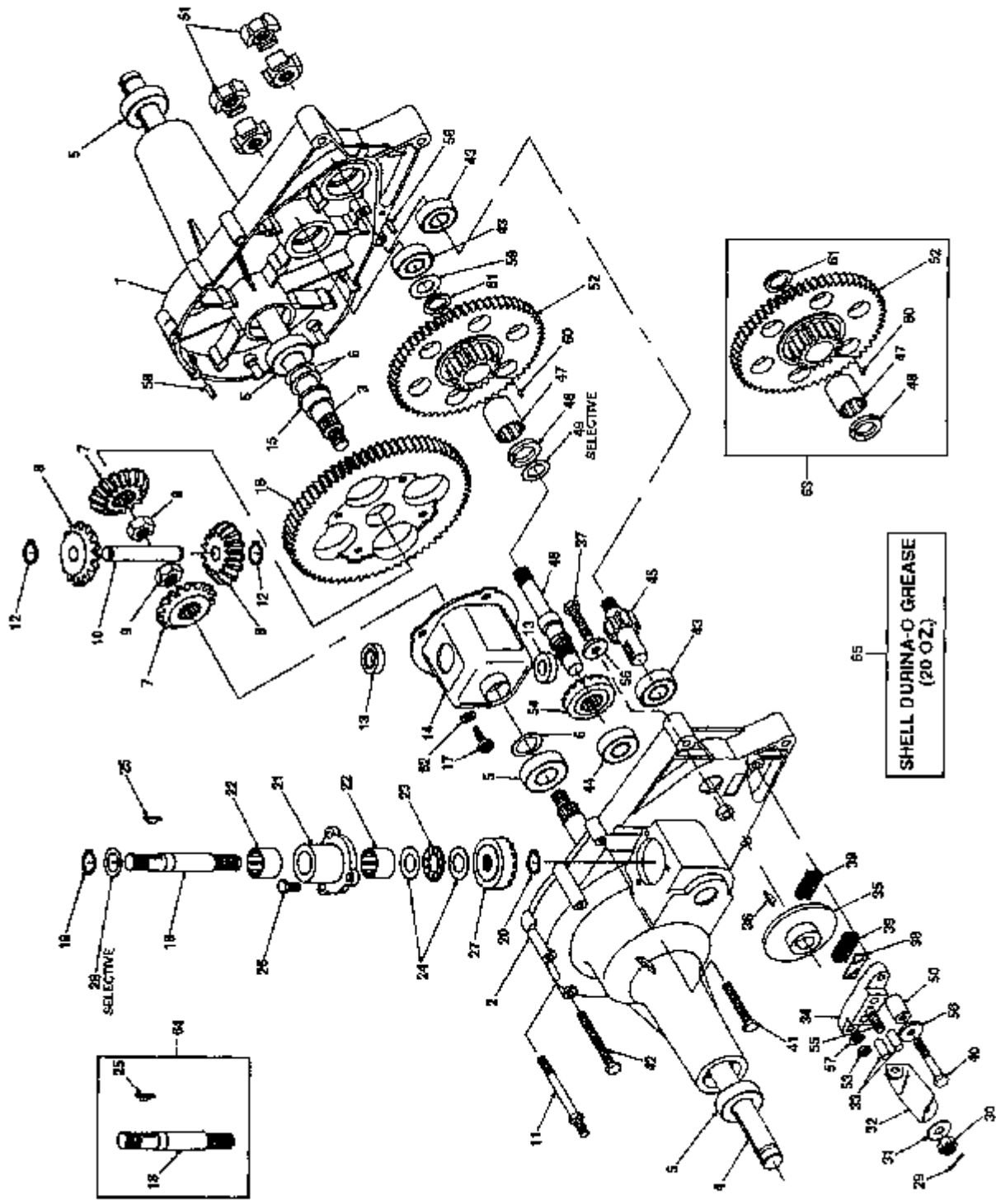


KEY NO.	PART NO.	DESCRIPTION	KEY NO.	PART NO.	DESCRIPTION
1	532 12 27-56	Shaft, Pump	31	532 12 71-49	Block Kit, Cylinder
2	532 12 27-16	* Ring, Retaining	36	532 12 71-51	Plug, Plastic
3	532 12 27-45	Bearing, Ball	37	532 12 27-86	Pin, Stainless, Headless
4	532 12 27-15	* Spacer	38	532 12 27-18	* Gasket, Center Section
5	532 12 27-00	* Seal, Lip	39	532 12 27-31	Filter
6	532 12 26-99	* Ring, Retaining	40	532 12 27-30	Washer, Thrust
8	532 12 27-67	Bearing, Cradle	41	532 12 27-28	Spring, Helical, Compression
11	532 12 27-47	Bearing, Journal	42	532 12 71-52	Check Valve Kit
12	532 12 27-17	* Seal, Lip	46	532 12 27-87	Plug, Stainless, Threaded
13	532 12 27-48	Arm, Trunnion	47	532 12 27-52	Screw, Socket Head, Cap
14	532 12 27-49	Guide, Slot	50	532 12 27-88	Washer, Thrust
15	532 12 71-46	Housing Kit, Transmission	51	532 12 27-89	Pin, Spiral
17	532 12 27-70	Bearing, Thrust, Ball	52	532 12 27-54	Plug, Stainless, Threaded
18	532 12 27-71	Plug, Pipe	55	532 12 71-53	Bypass Valve Kit
19	532 12 71-47	Center Section Kit Bearing,	58	532 12 27-90	Plug, Stainless, Threaded
20	532 12 27-73	Needle	59	532 12 71-54	Overhaul Seal Kit, BDU-10
21	532 12 27-22	* Seal, Lip			<b>Includes:</b> Items marked with an asterisk (*); O-Rings for Check Valves and Bypass Valve
22	532 12 27-50	Shaft, Motor	60	532 12 14-30	Pump Assembly, Complete
25	532 12 71-48	Swashplate, Variable			
30	532 12 27-23	* Seal, Lip			

Komponenter ingående i hydrostaten kan ej beställas från Husqvarna.  
 Komplet hydrostat kan beställas. Beställ delar hos Sauer och Sundstrands agent.

# AGRI-FABTRANSAXLE MODEL NUMBER 121431 X

H



<b>KEY PART NO. NO.</b>	<b>DESCRIPTION</b>
01 532 12 26-14	Housing, Half L.H.
02 532 12 26-15	Housing, Half R.H.
03 532 12 26-16	Axle L.H.
04 532 12 26-20	Axle R.H.
05 532 12 26-21	Bearing, Ball
06 532 12 26-22	Washer, Flat 3/4 x 1 -1 /8 x .030
07 532 12 26-23	Gear, Miter
08 532 12 26-24	Gear, Miter
09 532 12 26-25	Nut, Hex Jam w/Patch 1/2-20
10 532 12 26-26	Shaft, Cross
11 532 12 26-88	Screw, Stud
12 532 12 26-29	Snap, Ring
13 532 12 26-31	Bearing, Thrust
14 532 12 26-33	Housing Assembly, Differential
15 532 12 26-34	Bearing, Flange
16 532 12 26-40	Gear, Differential 72 Tooth
17 532 12 26-41	Bolt, Torx Head 1/4-28 x 5/8"
18 532 12 26-42	Shaft, Input
19 532 12 26-43	Snap, Ring
20 532 12 26-44	Retaining Ring 7/16"
21 532 12 26-45	Housing, Input Bearing
22 532 12 26-46	Bearing, Needle
23 532 12 26-47	Bearing, Thrust
24 532 12 26-48	Washer, Flat 5/8 x 1-1/8 x .030
25 532 12 26-49	Key, Hi-Pro 3/32 x 5/8
26 532 12 26-50	Screw, Hex W/Patch 1 /4-20 x 3/4
27 532 12 26-51	Gear, Input Pinion 17 Tooth
28 532 12 30-61	Washer, Flat .62 x 1 x .05
-- 532 12 26-78	Washer, Flat .62 x 1.125 x .060
-- 532 12 26-54	Washer, Flat .62 x 1 x .040
29 532 12 26-56	Pin, Cotter
30 532 12 26-53	Nut, Castle 5/16-24
31 532 12 26-59	Washer, Flat .343 x .88 x .062
32 532 12 26-60	Arm, Brake Actuator
33 532 12 26-62	Pin, Brake Actuating
34 532 12 26-63	Brake, Yoke

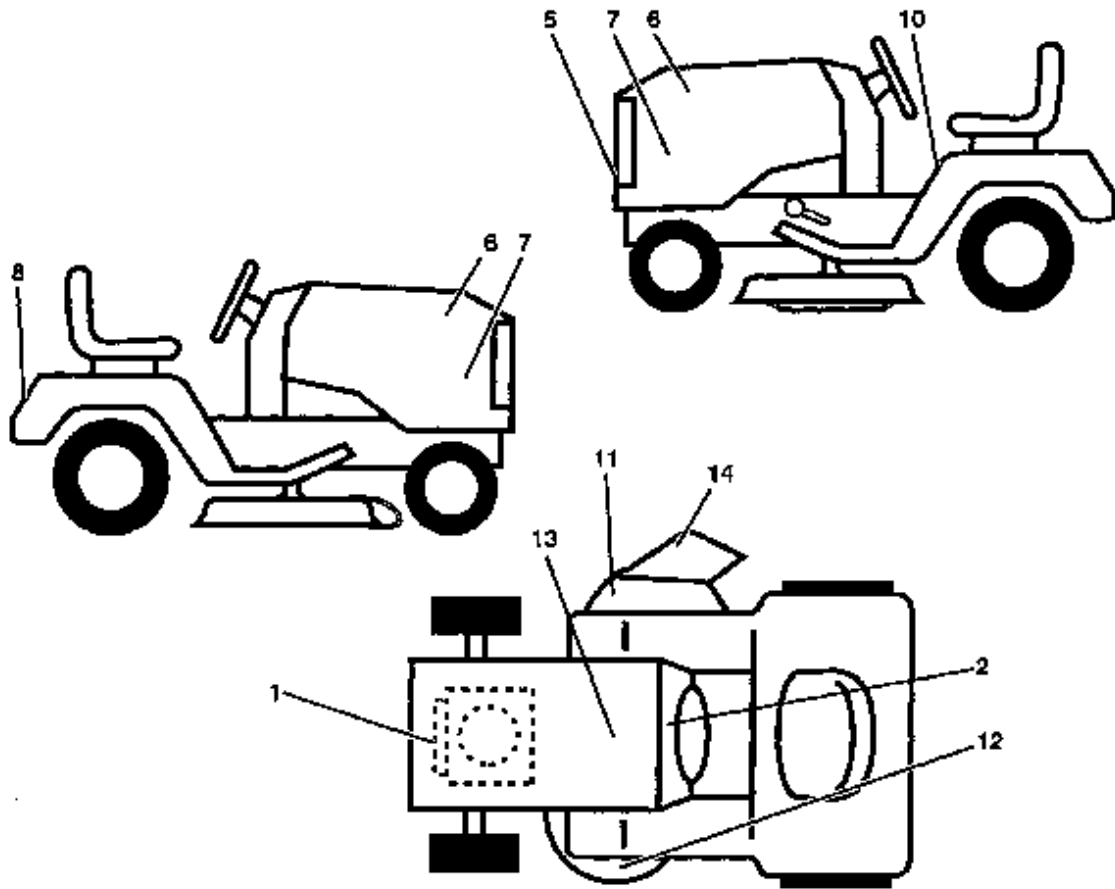
<b>KEY PART NO. NO.</b>	<b>DESCRIPTION</b>
35 532 12 26-64	Disc, Brake
36 532 12 30-65	Key, Hi-Pro 3/16 x 5/8"
37 532 12 26-66	Screw, Hex 1/4-20 x 1.50
38 532 12 26-67	Plate, Puck
39 532 12 26-68	Puck, Brake
40 532 12 30-66	Screw, Hex w/Patch 1/4-20 x 2.00
41 532 12 26-70	Screw, Hex Self-Tap 1/4-20 x 2.00
42 532 12 26-71	Screw, Hex Self-Tap 1/4-20 x 3.00
43 532 12 26-72	Bearing, Ball
44 532 12 26-73	Bearing, Bali
45 532 12 26-74	Shaft, Pinion W/11 Tooth Gear
46 532 12 26-75	Shaft, Drive
47 532 12 30-59	Bearing, Needle
48 532 12 30-60	Bronze Thrust Brg. 5/8 x 1-1/4 x 7/64
49 532 12 30-61	Washer, Flat .62 x 1.0 x .050
-- 532 12 26-54	Washer, Flat .62 x 1.0 x .040
50 532 12 26-89	Spacer
51 532 12 18-39	Coupling
52 532 12 69-75	Gear, 60 and 17 Tooth
53 532 12 26-82	Nut, Hex 1/4-20
54 532 12 26-83	Gear, Drive Pinion 17 Tooth
55 532 12 26-84	Bolt, Square Head
56 532 12 26-85	Washer 15/16 x .265 x .125
57 532 12 26-86	Washer, Spring Lock 1/4"
58 532 12 26-87	Pin, Roll 3/16" x 1 /2"
59 532 12 26-52	Washer, Flat .62 x 1.0 x .030
60 532 12 30-62	Pin, Dowel 3/32 x 1/4
61 532 12 30-63	Seal, Grease
62 532 12 69-77	Washer, Head Spring Lock 1/4"
63 532 12 69-80	Assembly, Gear, Reduction
64 532 12 26-42	Assembly, Shaft, Input
65 532 12 69-76	Shell Durina-O Grease (20 oz.)
532 12 14-31	Transaxle" Assembly Complete"

**NOTE:** All component dimensions given in U.S. inches  
1 inch = 25.4 mm



# DECALS

**J**



KEY NO.	PART NO.	DESCRIPTION	KEY NO.	PART NO.	DESCRIPTION
1	532 12 90-57	Decal, HP, Engine	12	532 12 61-95	Decal, Rotating Blades, (Swedish/Danish/Finnish/Norwegian)
2	532 10 88-13	Decal, Operating Instructions	--	532 12 61-96	Decal, Rotating Blades, (English/French/Germany/Dutch)
5	532 12 59-89	Decal, Logo, Grill	--	532 12 63-46	Decal, Rotating Blades, (Spanish/Italian)
6	532 12 60-34	Decal, Speed, Side Panel	13	532 12 15-49	Decal, Caution, Battery
7	532 13 15-90	Decal, Hood Right. H.	14	532 12 61-93	Decal, Caution, Deflector, (Swedish/Danish/Finnish/Norwegian)
7	532 13 15-91	Decal Hood Left. H.	--	532 12 61-94	Decal, Caution, Deflector, (English/French/German/Dutch)
8	532 12 55-84	Decal, Logo, Fender	--	532 12 63-47	Decal, Caution, Deflector, (Spanish/Italian)
10	532 12 66-81	Decal Operating Warning			
11	532 12 61-91	Decal, Warning, Cut Finger, (Swedish/Danish/Finnish/Norwegian)			
--	532 12 61-92	Decal, Warning, Cut Finger, (English/French/German/Dutch)			
--	532 12 63-45	Decal, Warning, Cut Finger, (Spanish/Italian)			