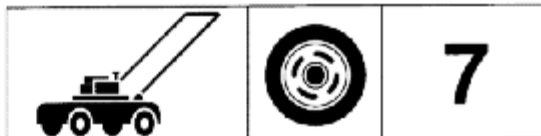


H Husqvarna



LT 125



1.1992

Spare parts

Ersatzteile

Pièces détachées

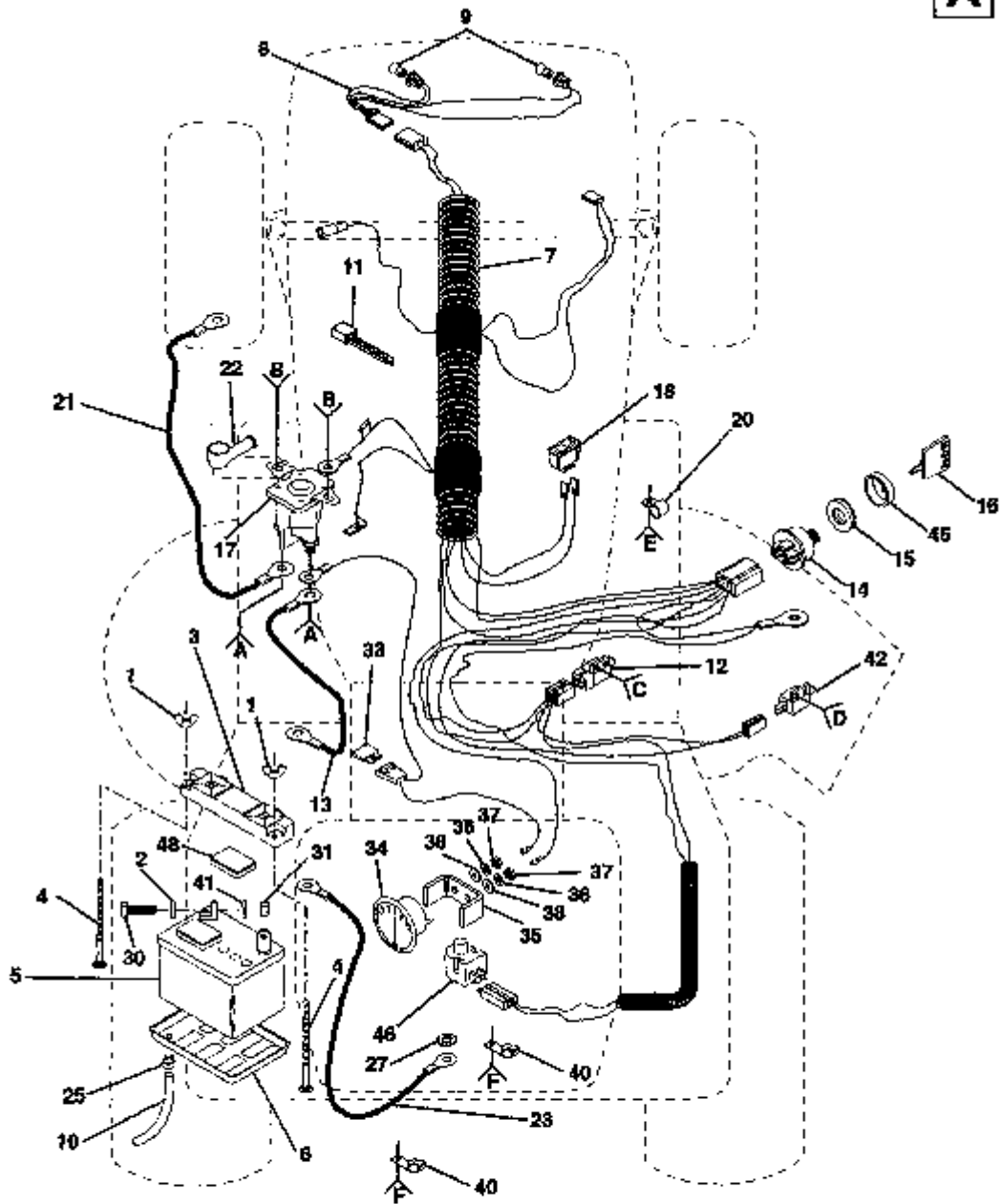
Reserve onderdelen

Repuestos

Reservdelar

ELECTRICAL

A



- | | | | | | |
|----------|----------|----------|----------|----------|----------|
| A | B | C | D | E | F |
| | | | | | |
| | | | | | |
| | | | | | |

ELECTRICAL

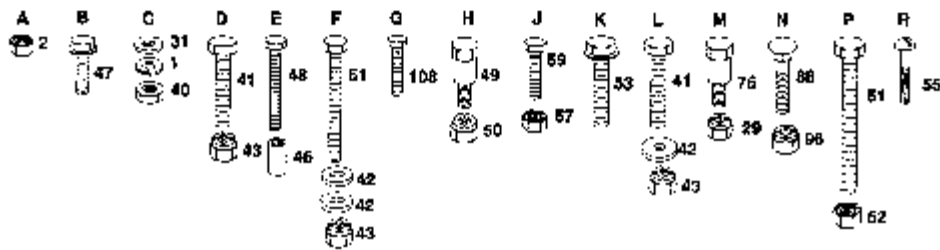
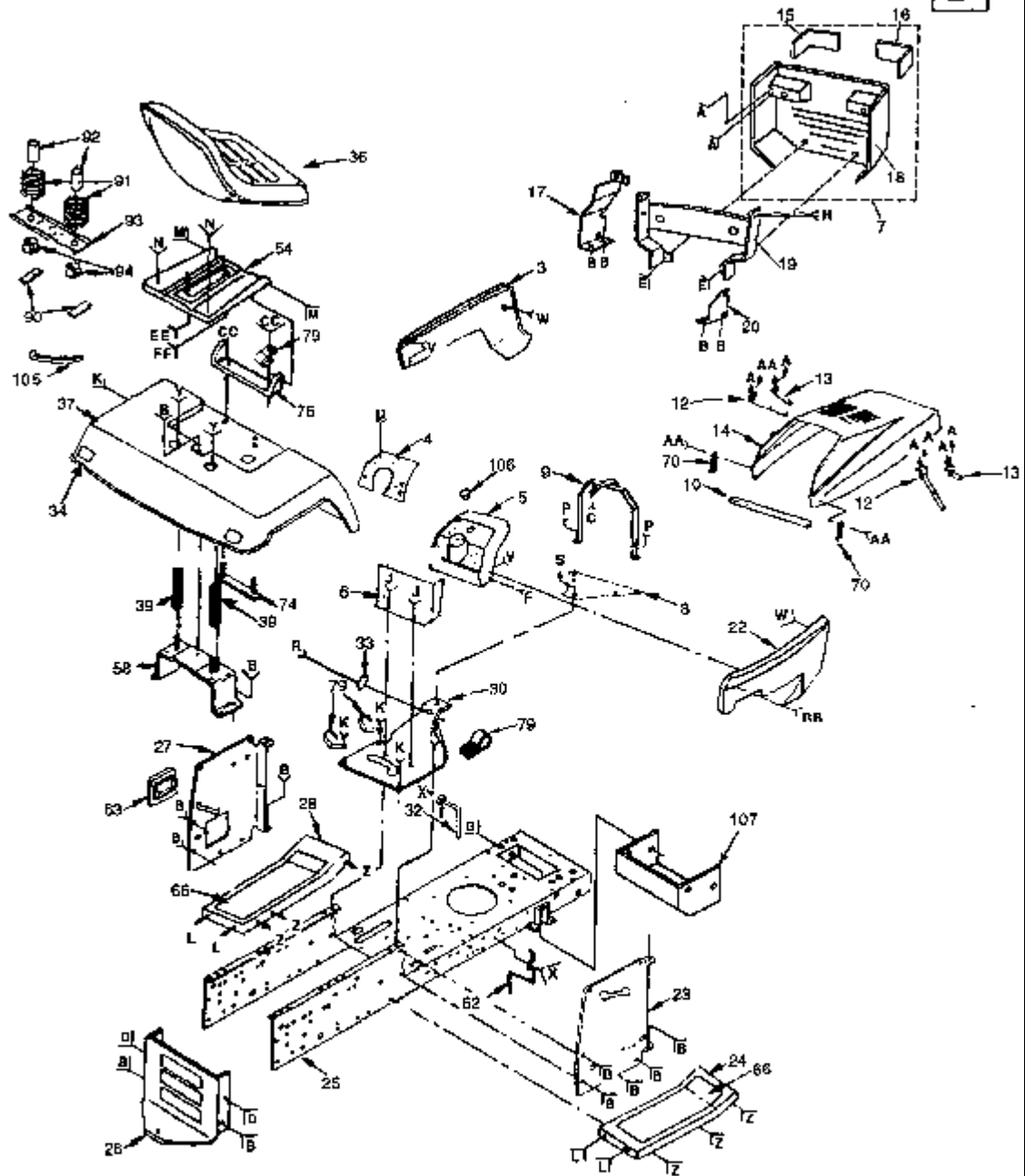


KEY NO.	PART NO.	DESCRIPTION
1	532 12 31-98	Wing Nut 1/4 - 20
2	819 09 10-16	Washer 9/32 x 5/8 x16 Ga.
3	532 10 24-76	Terminal Guard
4	872 24 04-60	Carriage Bolt 1/4 - 20 x 7-1/2
5	532 12 12-65	Battery AYP
5	506 78 88-01	Battery Husqvarna
6	532 00 76-03	Battery Tray
7	532 13 26-41	Ignition Harness
8	532 12 74-41	Harness, Light Socket
9	532 00 76-62	Light Bulb
10	532 00 76-97	Tube, Battery Tray
11	532 12 47-56	Cable Tie
12	532 10 95-53	Switch, Interlock, Attachment Clutch
13	532 12 47-70	Cable, Battery (Battery to Solenoid)
14	532 12 51-04	Switch, ignition
15	532 12 42-11	Nut, Ignition
16	532 12 21-47	Key
17	532 10 90-81	Solenoid
18	532 11 07-12	Switch, Light
19	873 68 04-00	Nut, Crownlock 1/4 - 20
20	532 00 41-71	Clip Wire
21	532 00 47-99	Cable, Battery (Solenoid to Starter)
22	532 13 15-63	Terminal Cover (For Solenoid)
23	532 12 47-73	Cable, Battery (Battery to Ground)
24	818 00 04-00	Screw
25	532 10 95-96	Clamp, Hose
26	874 64 10-08	Slotted Pan Head Screw #10-32
27	810 04 06-00	Washer, Lock
28	874 76 04-12	Bolt, Hex 1/4 - 20 x 3/4
29	873 22 04-00	Nut, Hex 1/4- 20
30	874 76 04-12	Bolt, Hex 1/4 - 20 x 3/4
31	873 22 04-00	Nut, Hex 1/4 - 20
32	810 04 04-00	Washer, Lock 1/4
33	532 10 88-24	Fuse
34	532 12 49-00	Ammeter
35	532 13 17-08	Bracket, Ammeter
36	810 04 04-00	Washer, 1/4
37	873 91 10-00	Nut
38	819 09 08-16	Washer, 9/32 x 1/2 x 16 Ga
40	532 12 49-95	Clip, Insulated
41	810 04 04-00	Lock Washer 1/4
42	532 10 44-45	Switch, Interlock, Clutch Pedal
43	874 64 10-08	Screw, Hex
44	873 95 10-00	Nut, Keps #10-32 UNF
45	532 12 36-20	Cover, Switch Key
46	532 12 13-05	Switch, Plunger
47	817 02 10-08	Screw, Hex Tapping #10-24 x 1 /2
48	532 12 12-64	Battery Caps Set
50	810 04 04-00	Washer, Lock 1/4
51	873 95 10-00	Nut, Keps # 10-32

NOTE: All component dimensions given in U.S. inches.
1 inch = 25.4 mm

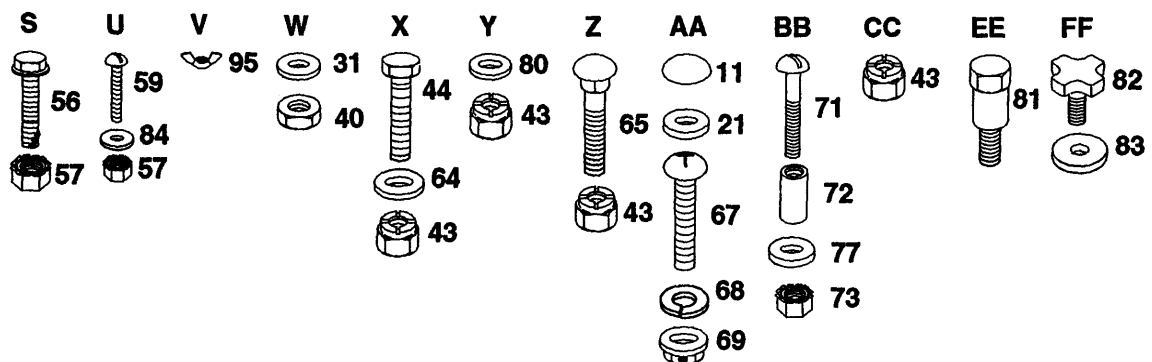
ENCLOSURES

B



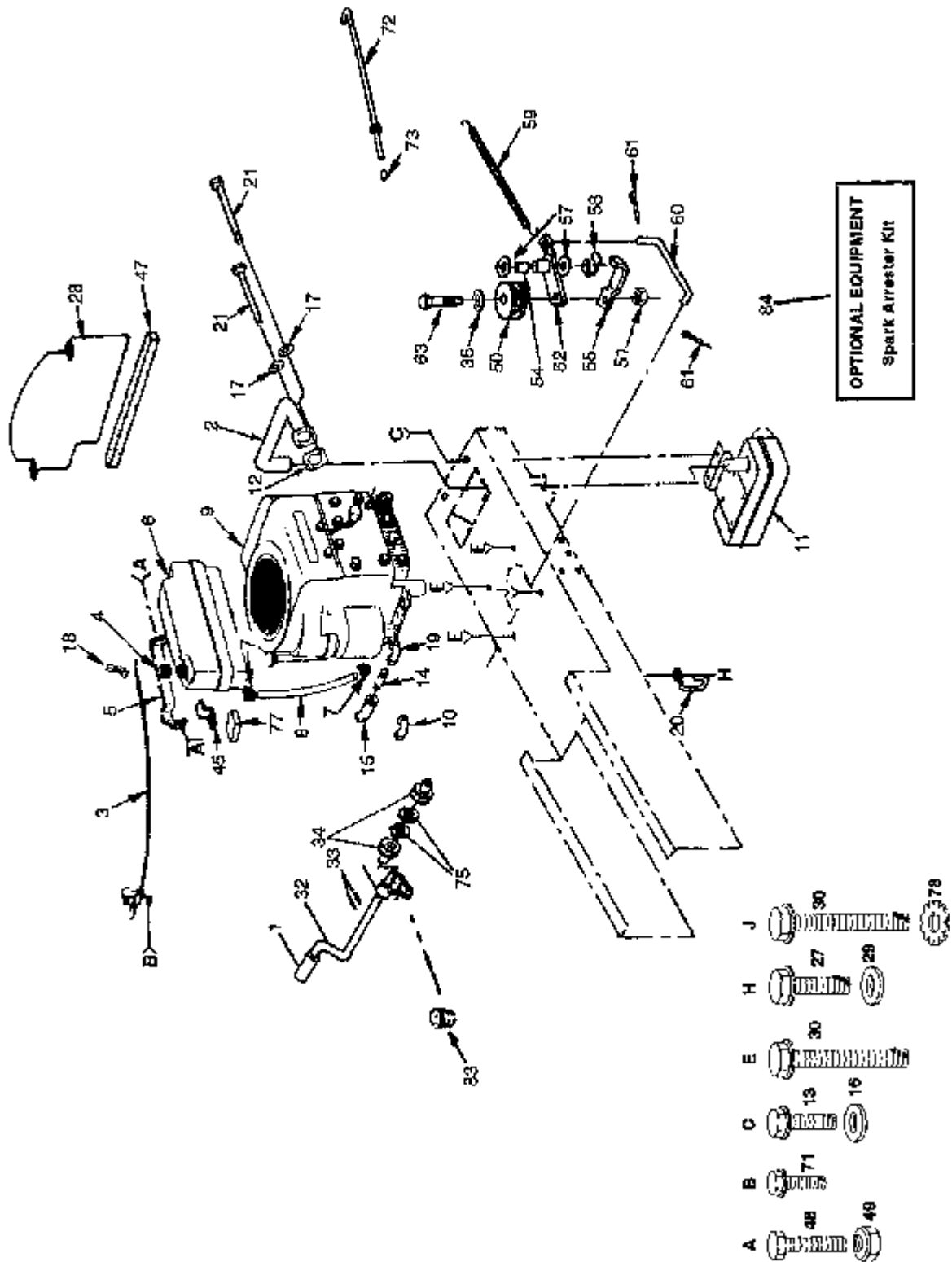
KEY NO.	PART NO.	DESCRIPTION	KEY NO.	PART NO.	DESCRIPTION
1	810 04 04-00	Washer, Lock 1/4	52	873 35 06-00	Nut, Keps 3/8-16
2	873 22 04-00	Nut71/4-20	53	874 76 06-12	Screw, Hex Washer Hd. Thd. Forming 3/8-16 x 1/2 Type TT
3	532 12 49-05	Panel, Side L.H.	54	532 12 42-94	Pan, Seat
4	532 12 49-48	Plate, Dashboard	55	817 21 10-10	Screw, Hex Head Self Tapping #10-16x1/2TypeB
5	532 12 41-82	Dashboard	56	874 76 05-14	Bolt, Hex 5/16-18 x 7/8
6	532 10 47-83	Dash, Lower	57	873 68 05-00	Nut, Keps 5/16-18
7	532 12 73-21	Grill Assembly	58	532 10 55-09	Bracket Assembly, Fender
8	532 10 69-65	Plate, Support, Battery	59	874 76 05-14	Screw, Truss Hd. 5/16-18 x 3/4
9	532 12 41-30	Support Assembly, Dash	62	532 12 14-41	Guide, Belt, Lower, Engine, Pulley, R.H.
10	532 10 50-37	Foam, Strip	63	532 12 17-94	Cover, Access
11	532 11 03-56	Cap, Snap	64	819 13 20-12	Washer 13/32 x 1 - 1/4 x 12 Ga.
12	532 10 67-84	Strap Assembly, Hinge, Rear	65	872 11 06-08	Bolt, Carriage 3/8-16 x 3/4
13	532 10 46-18	Strap Assembly, Hinge, Front	66	532 10 82-56	Pad, Footrest
14	532 12 50-07	Hood	67	871 01 10-07	Screw, Cross Recess Pan Hd. Mach. #10 - 24 x 1/2
15	532 12 42-50	Lens, L.H.	68	810 04 04-00	Washer, Lock #10
16	532 12 42-51	Lens, R.H.	69	532 12 50-04	Nut, Weld
17	532 12 16-10	Bracket Assembly Frame Pivot L.H.	70	532 10 98-08	Latch, Hood
18	532 12 73-24	Grill	71	874 98 10-20	Screw, Machine Cross Recess #10-24x 1 - 1/4
19	532 12 60-25	Support, Grill Assembly	72	532 00 72-06	Spacer, Split #10 x 3/4
20	532 11 08-52	Bracket Assembly Frame Pivot R.H.	73	873 73 10-00	Nut, Keps #10 - 24
21	532 11 03-57	Washer, Snap Cap	74	532 10 55-11	Strap Assembly, Fender
22	532 12 50-63	Panel, Side, R.H.	75	532 12 66-56	Bracket, Pivot, Seat
23	532 13 20-71	Panel, Dash, R.H.	76	532 10 55-29	Bolt, Shoulder
24	532 12 49-14	Footrest, R .H.	77	819 09 08-16	Washer 7/32 x 1/2 x 18 Ga.
25	532 13 10-52	Chassis	79	532 12 49-96	Clip, Fuel Line
26	532 12 78-66	Drawbar	80	819 13 16-11	Washer 13/32 x 1 x 14 Ga.
27	532 13 20-72	Panel, Dash,L.H.	81	532 12 70-18	Bolt, Shoulder 5/16 x 18 UNC x .62
28	532 12 48-99	Footrest, L.H.	82	532 12 00-68	Knob - 1/2
29	873 68 05-00	Nut, Crownlock 5/16-18	83	819 17 19-12	Washer 17/32 x 13/16 x 12 Ga.
30	532 12 37-83	Saddle	84	819 11 14-16	Washer 11/32 x 11/16 x 16 Ga.
31	819 09 14-13	Washer 9/32 x 7/8 x 16 Ga.	88	872 04 04-10	Bolt Carriage 1/4 - 20 x 1 - 1/4
32	532 12 14-40	Guide, Belt, Lower, Engine Pulley, L.H	90	532 12 12-51	Foam Strip
33	532 12 47-20	Bushing, Steering	91	532 12 12-50	Spring
34	532 10 62-02	Reflector, Taillight	92	532 13 43-00	Spacer
36	532 12 41-85	Seat	93	532 12 12-46	Bracket, Switch Mount
37	532 12 74-21	Fender	94	532 12 12-48	Snap Bushing
39	532 12 41-81	Spring, Seat	95	532 12 31-98	Wing Nut 1/4-20
40	873 22 04-00	Nut, Hex 1/4-20	96	873 68 04-00	Nut, Hex Large Flange Lock
41	874 76 06-12	Bolt, Hex 3/8-16 x 3/4	105	532 13 11-27	Tie, Cable
42	819 13 13-16	Washer 13/32 x 13/16 x 12 Ga.	106	532 00 54-79	Plug, Button
43	873 68 06-00	Nut, Crownlock 3/8-16	107	532 12 89-53	Shield, Heat
44	874 76 06-24	Bolt, Hex 3/8-16 x 1	108	817 02 10-08	Screw, Tap Hex #10-24 x 1/2
46	532 12 12-35	Spacer			
47	874 76 06-12	Screw, Hex Washer Hd. Thd. Roll 3/8-16 x 3/4 Type TT			
48	874 76 04-44	Bolt, Hex Fin.1/4-20 x 2-1/2			
49	532 00 76-05	Bolt, Shoulder 1/4-20			
50	873 68 04-00	Nut, Crownlock 1/4-20			
51	874 76 06-24	Bolt, Hex 3/8-16 x 1-1/4			

NOTE: All component dimensions given in U.S. inches.
1 inch = 25.4 mm



POWER AND MECHANICAL CONTROLS GROUP

C



POWER AND MECHANICAL CONTROLS GROUP

C

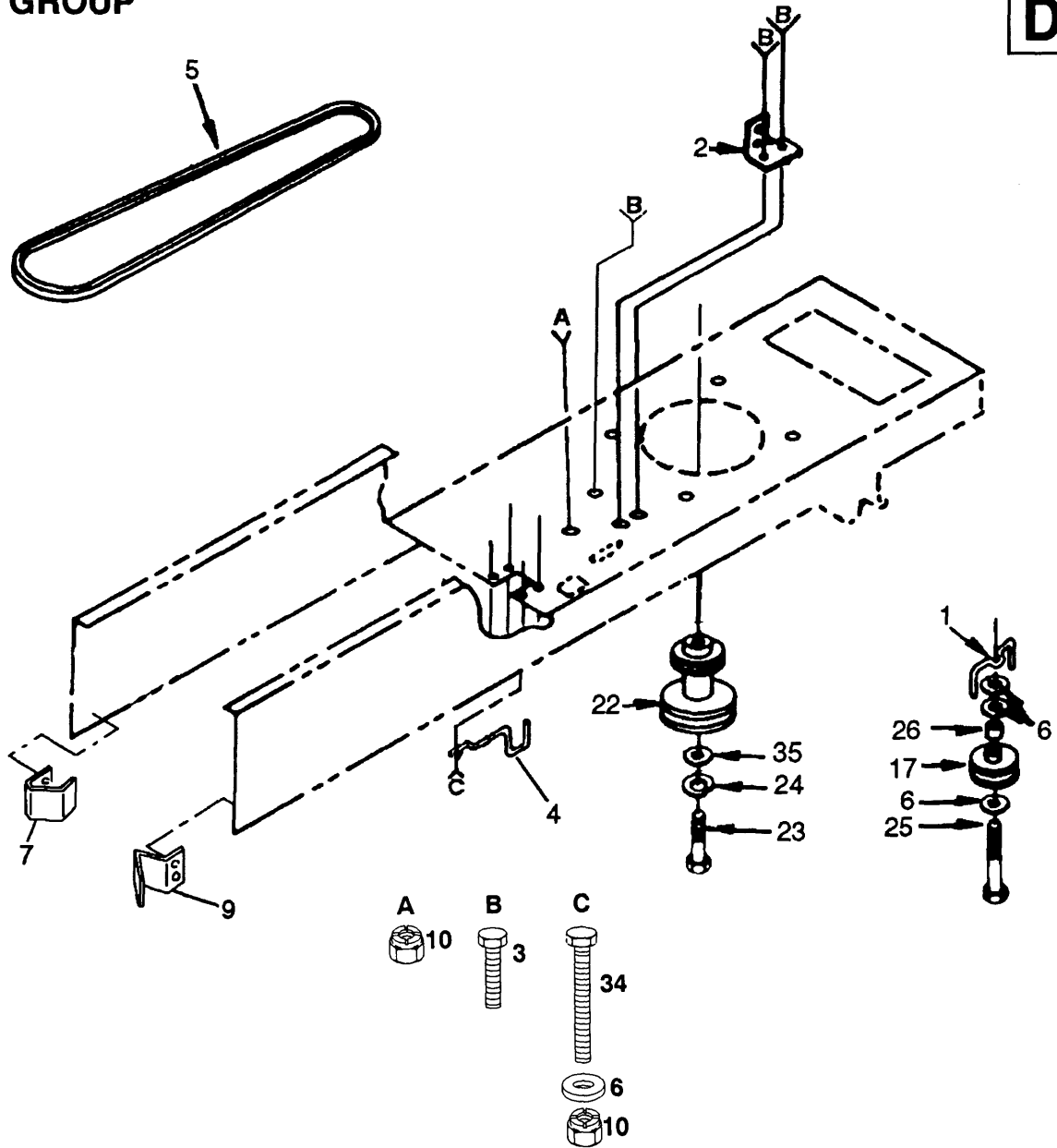
KEY PART NO.	PART NO.	DESCRIPTION
1	532 12 35-33	Pedal Cover
2	532 12 30-73	Pipe, Exhaust 180°
3	532 13 27-54	Control, Throttle
4	532 12 49-12	Fuel Cap
5	532 12 12-81	Support, Tank, Fuel
6	532 12 12-80	Tank, Fuel
7	532 12 34-87	Hose Clamp
8	532 00 78-33	Fuel Line
9	-----	Engine Briggs & Stratton Model No. 286707
10	813 24 03-00	90° Street Elbow 3/8 NPT
11	532 12 30-75	Muffler
12	532 12 55-93	Gasket, Exhaust
13	874 76 05-14	Screw, Thread Rolling 5/16-18 x 3/4
14	813 28 03-28	Nipple, Pipe 3/8-18NPT x 3"
15	813 20 03-00	90° Elbow 3/8 NPT
16	819 11 24-10	Washer 11/32 x 1 -1/4 x 16 Ga.
17	810 04 05-00	Washer, Lock Hvy. Helical Spring 5/16
18	532 13 30-97	Stop, Throttle
19	813 31 03-00	45° Street Elbow
20	532 10 47-77	Retainer, Belt, Chassis L.H.
21	874 76 05-14	Screw, Hex.Hd. Cap 5/16 - 18 x 5/8
27	874 76 06-12	Screw, Hex Washer Thd. Rolling 3/8-16 x 3/4
28	532 12 64-23	Baffle, Vertical
29	819 13 13-16	Washer 13/32 x 13/16 x 12 Ga.
30	874 76 06-24	Screw, Hex Washer Hd. Thread Rolling 3/8-16 x 1 - 1/4TypeTT
32	532 12 24-24	Shaft, Pedal, Foot
33	532 00 28-82	Roll Pin 3/16 x 1

KEY PART NO.	PART NO.	DESCRIPTION
34	532 12 01-83	Bearing, Nylon
36	819 13 13-16	Washer 13/32 x 13/16 x 16 Ga.
45	532 10 47-99	Brace, Tank
47	532 10 50-37	Strip, Foam
48	874 76 05-14	Bolt, Hex 5/16-18 x 3/4 Gr. 5
49	873 68 05-00	Locknut 5/16-18 Gr. B
50	532 12 77-83	Idler, V. Groove
51	873 68 06-00	Nut, Crownlock 3/8-16
54	532 10 57-06	Bearing
55	532 12 32-05	Retainer, Belt
57	532 11 08-12	Washer, Hardened
58	812 00 00-39	Ring, Klip
59	532 10 57-09	Spring, Return Clutch
60	532 10 57-10	Link, Clutch
61	876 02 04-16	Pin, Cotter 1/8 x 3/4
62	532 12 37-89	Bellcrank Assembly (Inc. Key No. 54)
63	874 76 06-24	Bolt Hex 3/8 - 16 x 1 - 1/2
71	874 76 04-12	Screw Hex Washer Head Thread Cutting 1/4 - 20 x 1/2
72	532 13 32-61	Rod, Brake, Park
73	532 07 16-73	Plunger Cap
75	819 21 16-16	Washer 21/32 x 1 x 16 Ga.
76	812 00 00-22	E-Ring
77	532 00 64-31	Pad, Spacer
78	810 04 06-00	Washer, Lock 3/8 - Ext.Tooth
83	-----	Oil Drain Plug (Order From Engine Manufacturer)
84	532 12 18-51	Spark Arrester Kit

NOTE: All component dimensions given in U.S. inches.
1 inch = 25.4 mm

DRIVE GROUP

D



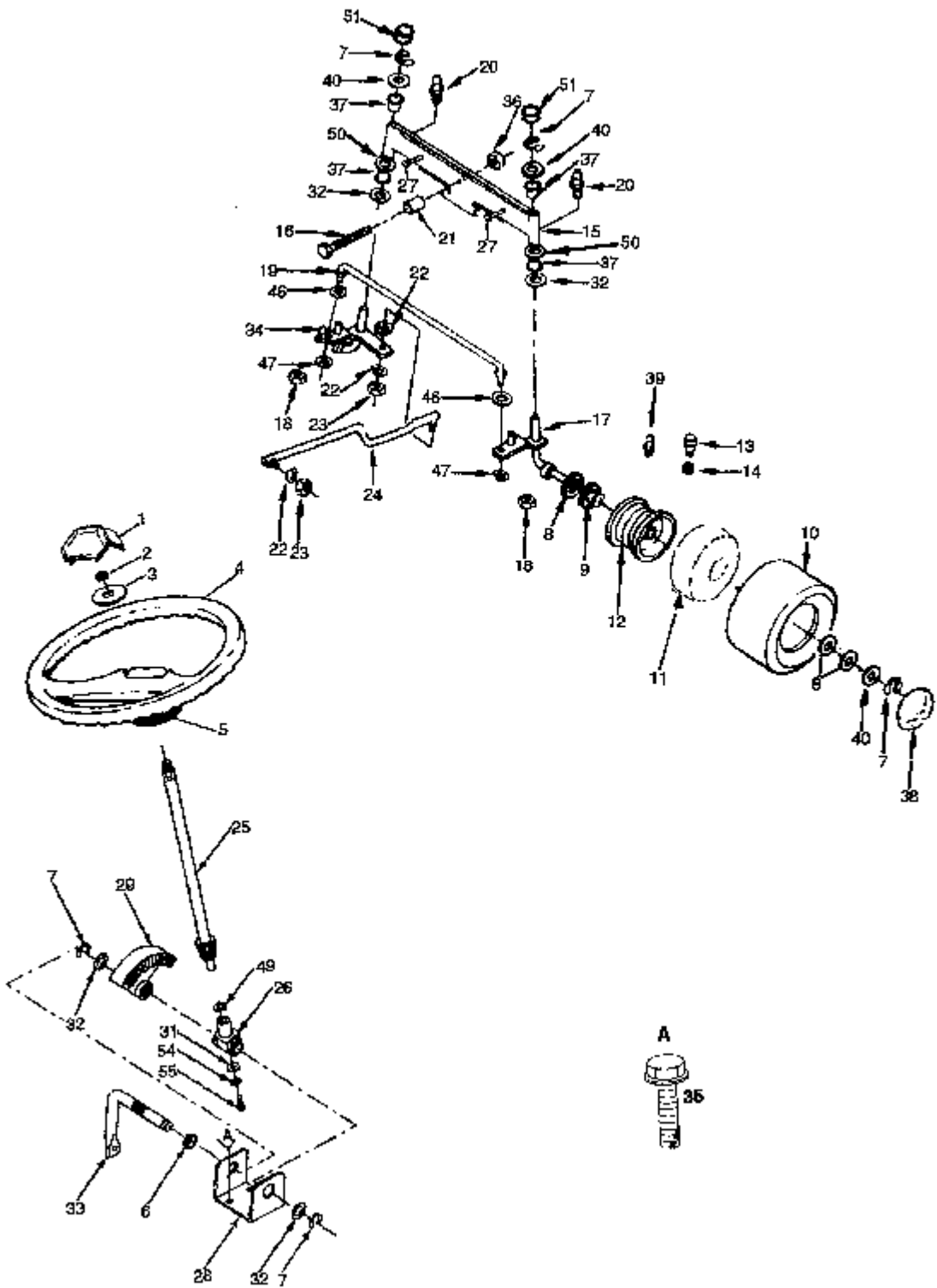
KEY NO.	PART NO.	DESCRIPTION
1	532 10 90-70	Keeper, Belt
2	532 10 82-36	Bracket, Switch
3	817 02 10-08	Screw, Tap. Hex Hd. #10-24 x 1/2
4	532 12 99-21	Keeper, Belt, Engine
5	532 12 59-07	V-Belt, Drive
6	819 13 13-16	Washer 13/32 x 13/16 x 12 Ga.
7	532 12 72-75	Keeper, Belt L.H.
9	532 12 72-74	Keeper, Belt R.H.
10	873 68 06-00	Nut, Crownlock 3/8-16
17	532 12 36-74	Idler, Flat

KEY NO.	PART NO.	DESCRIPTION
22	532 13 10-02	Pulley, Engine
23	871 13 07-68	Bolt, Hex 7/16-20x4-1/4
24	810 04 07-00	Washer, Lock
25	874 76 06-44	Bolt, Hex 3/8-16x2-3/4
26	532 00 44-70	Spacer
34	874 76 06-24	Bolt, Hex 3/8-16 x 1
35	532 12 61-97	Washer 1-1/2 x 15/32 x .250

NOTE: All component dimensions given in U.S. inches.
1 inch = 25.4 mm

STEERING, FRONT AXLE AND WHEELS

E



STEERING, FRONT AXLE AND WHEELS

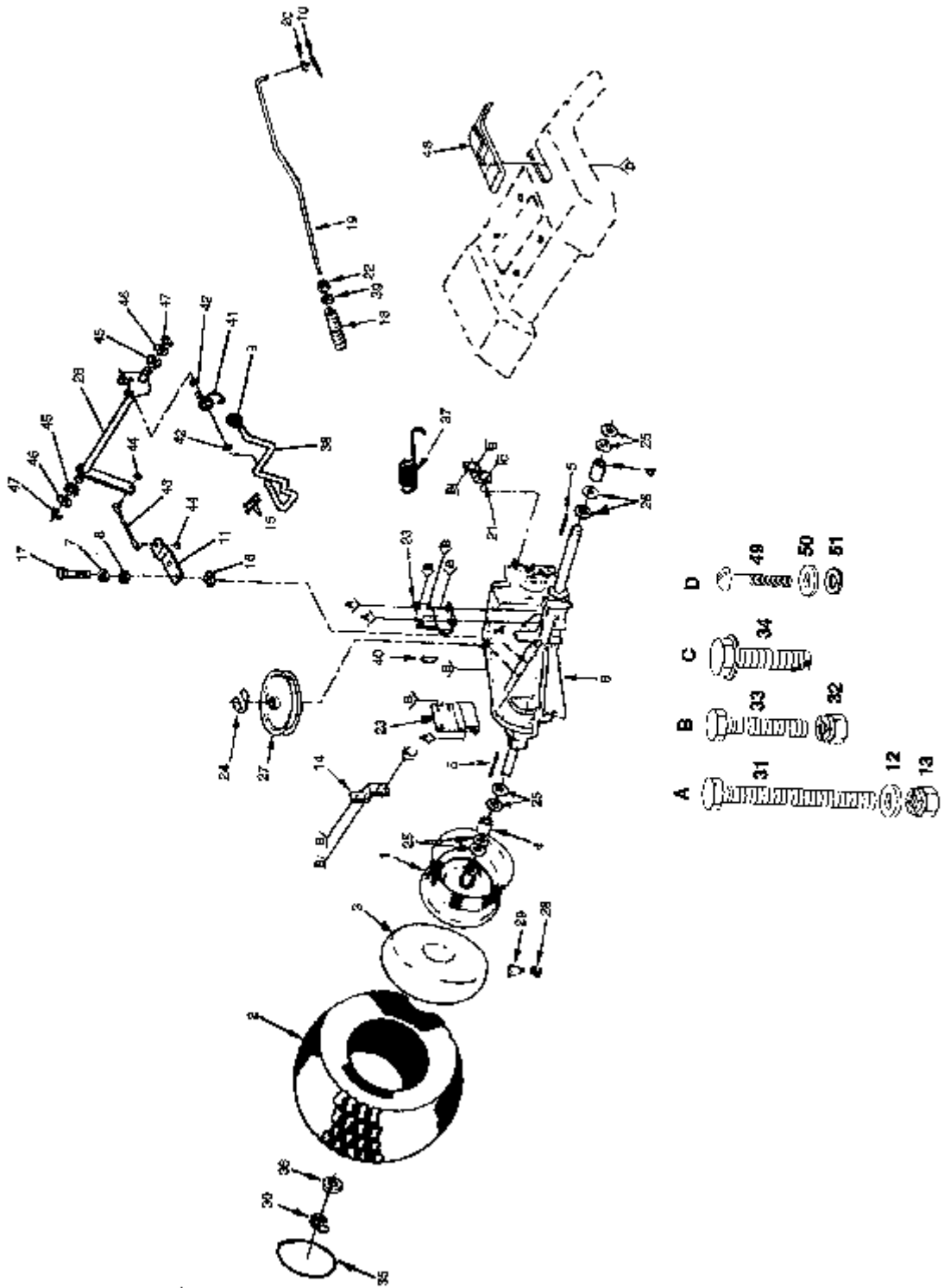


KEY NO.	PART NO.	DESCRIPTION	KEY NO.	PART NO.	DESCRIPTION
1	532 12 44-16	Insert, Steering Wheel	25	532 12 87-58	Shaft, Steering
2	873 36 08-00	Nut, Hex Jam Toplock 1/2-20	26	532 12 40-35	Support Shaft
3	532 10 07-12	Washer 17/32 x 2-1/4 x .160	27	532 13 26-24	Pin, Axle
4	532 12 44-15	Steering Wheel	28	532 12 40-36	Bracket Assembly, Steering
5	532 10 07-11	Adapter, Steering Wheel	29	532 12 40-34	Gear, Sector
6	532 10 98-16	Nyliner, Snap-in	31	532 12 66-84	Washer, Shim
7	812 00 00-29	Ring, Klip	32	532 12 49-31	Bearing, Thrust
8	532 12 17-49	Washer 25/32 x 1-1/4 x 16 Ga.	33	532 10 86-83	Shaft, Pitman
9	532 00 90-40	Bearings, Wheel, Front	34	532 13 04-60	Spindle Assembly, L.H.
10	532 10 62-22	Tire	35	874 76 06-12	Screw, Hex Washer Hd. Thread Forming Type TT 3/8-16 x 3/4
11	532 05 99-04	Tube, Tire (Optional Service Item Only)	36	873 60 10-00	Nut, Flange 5/8 - 11
12	532 12 51-02	Rim Assembly (Inc. 2 each Key No. 9)	37	532 12 49-37	Bearing
13	532 06 51-39	Stem, Valve	38	532 12 45-77	Cover, Wheel
14	532 05 91-92	Cap, Valve	39	532 00 02-78	Fitting, Grease
15	532 10 80-75	Axle Assembly, Front	40	532 12 17-48	Washer 25/32 x 1 -5/8 x 16 Ga.
16	874 76 10-60	Bolt, Hex 5/8-11UNC x 3-1/2	46	819 11 14-16	Washer 11/32 x 3/4 x 16 Ga.
17	532 13 04-59	Spindle Assembly, R.H.	47	810 04 05-00	Washer, Lock 1/4
18	873 81 05-00	Nut, Hex Nylon 5/16-24 UNF	49	532 05 70-79	Washer
19	532 13 04-67	Tie Rod	50	819 27 20-16	Washer 27/32 x -1/4 x 16 Ga.
20	532 12 68-55	Fitting, Grease	51	532 12 12-32	Spindle Cap
21	532 11 04-38	Spacer Bearing, Front Axle	54	810 04 04-00	Washer, Lock
22	810 04 06-00	Lock Washer 3/8	55	874 76 04-12	Screw, Socket Hex
23	873 61 06-00	Nut, Hex 3/8-24			
24	532 13 04-68	Drag Link			

NOTE: All component dimensions given in U.S. inches.
1 inch = 25.4 mm

TRANSAXLE AND REAR WHEEL

F



TRANSAXLE AND REAR WHEEL



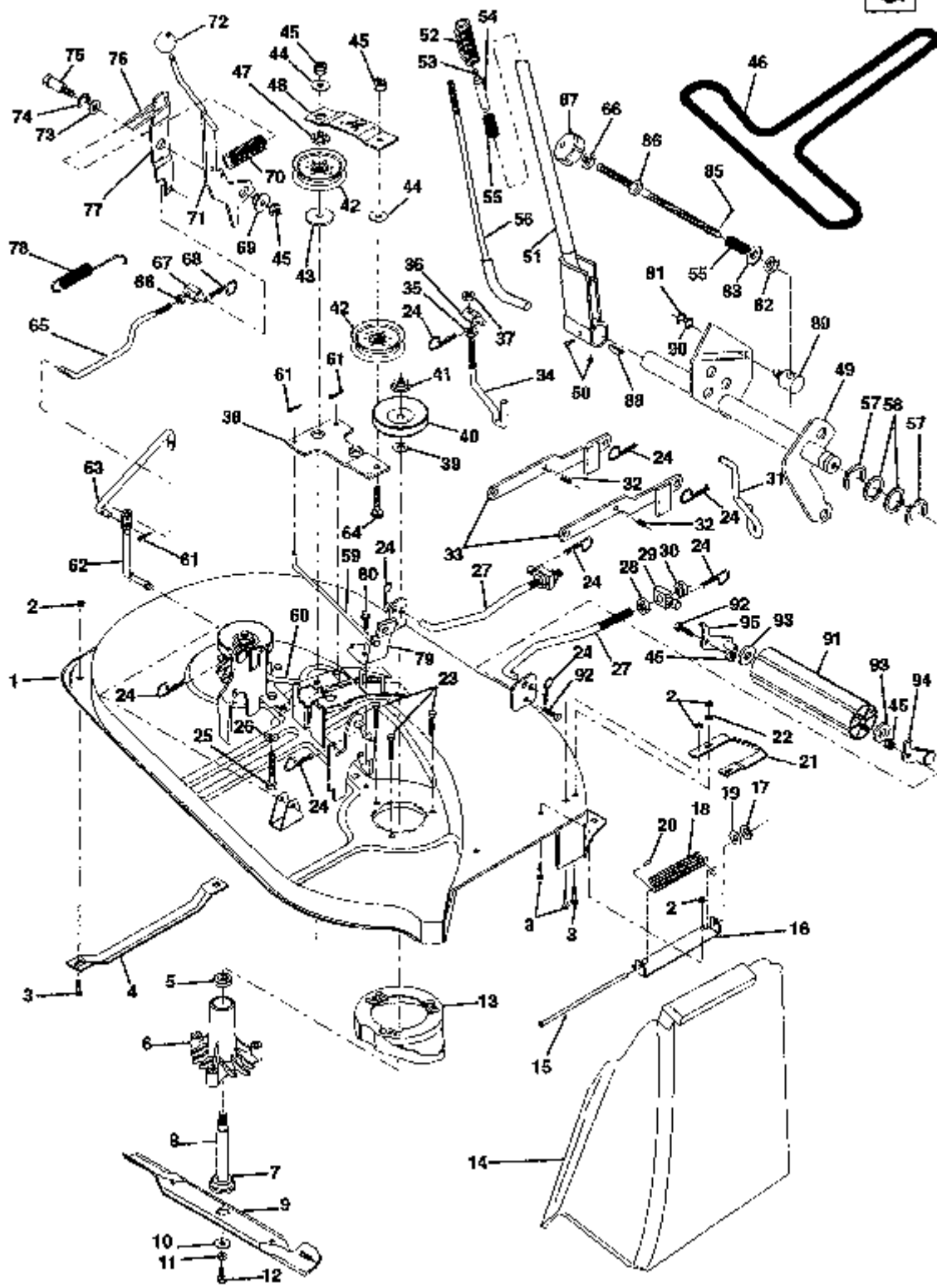
KEY NO.	PART NO.	DESCRIPTION
1	532 10 61-08	Rim Assembly
2	532 10 62-68	Tire
3	532 12 49-26	Tube, Tire (Optional, Service Item Only)
4	532 10 95-02	Spacer, Split
5	532 12 35-83	Key, Square 3/16 x 2
6	532 12 70-51	Transaxle, Peerless Model No. 930-010
7	810 04 04-00	Washer, Lock 1/4
8	819 09 14-13	Washer 9/32 x 3/4 x 10 Ga.
9	532 12 12-74	Knob, Control
10	876 02 04-16	Cotter Pin 1/8 x 3/4
11	532 12 72-76	Arm, Shift
12	819 11 14-16	Washer 11/32 x 7/8 x 16 Ga.
13	873 68 05-00	Nut, Crownlock 5/16-18
14	532 12 72-85	Strap, Torque L.H.
15	876 02 04-16	Pin, Cotter 1/8 x 1
16	532 10 57-01	Washer, Shift Plate
17	871 04 04-12	Bolt, Hex 1/4-28 x 3/4 Gr. 8
18	532 10 68-88	Spring, Rod, Brake
19	532 13 18-67	Rod, Brake
20	819 13 13-16	Washer 13/32 x 13/16 x 16 Ga.
21	532 12 15-20	Strap, Torque R.H.
22	873 35 06-00	Nut, Hex Jam 3/8-16
23	532 10 91-67	Bracket, Transaxle
24	812 00 00-28	Ring, Retainer
25	532 12 17-49	Washer 25/32 x 1-1/4 x 16 Ga.
26	532 12 72-73	Shaft Assembly, Shifter
27	532 12 36-66	Pulley, Input Transaxle

KEY NO.	PART NO.	DESCRIPTION
28	532 05 91-92	Cap, Valve
29	532 06 51-39	Stem, Valve
30	812 00 00-01	E-Ring
31	874 76 05-40	Bolt, Hex 5/16-18 x 2-1/2
32	873 68 06-00	Nut, 3/8-16
33	874 76 06-12	Bolt, Hex 3/8-16 x 3/4
34	874 76 05-14	Screw Hex Washer Hd. Thd. Form. Type TT 5/16-18 UNC x 3/4
35	532 12 45-78	Cover, Wheel
36	532 12 17-48	Washer 25/32 x 1 -5/8 x 16 Ga.
37	532 11 04-22	Spring, Brake Return
38	532 12 72-88	Rod, Shifter
39	873 68 06-00	Locknut, Hex W/Wsh. 3/8-16 UNC
40	532 12 50-96	Key, Woodruff #9 3/16 x 3/4
41	532 12 37-82	Spring, Torsion
42	819 17 16-16	Washer 17/32 x 3/4 x 16 Ga.
43	532 12 37-93	Rod, Link, Shift
44	873 53 04-00	Nut, Nylock 1/4-28
45	532 12 72-72	Bushing, Pivot
46	532 12 65-91	Washer, Shim .53 x 1.25 x .0598
47	812 00 00-03	Ring-E
48	532 12 72-87	Console Shift
49	817 03 08-08	Screw #8 x 3/8
50	819 09 08-16	Washer 3/16 x 7/16 x 18 Ga.
51	810 04 04-00	Washer Lock # 8

NOTE: All component dimensions given in U.S. inches.
1 inch = 25.4 mm

MOWER

G



MOWER

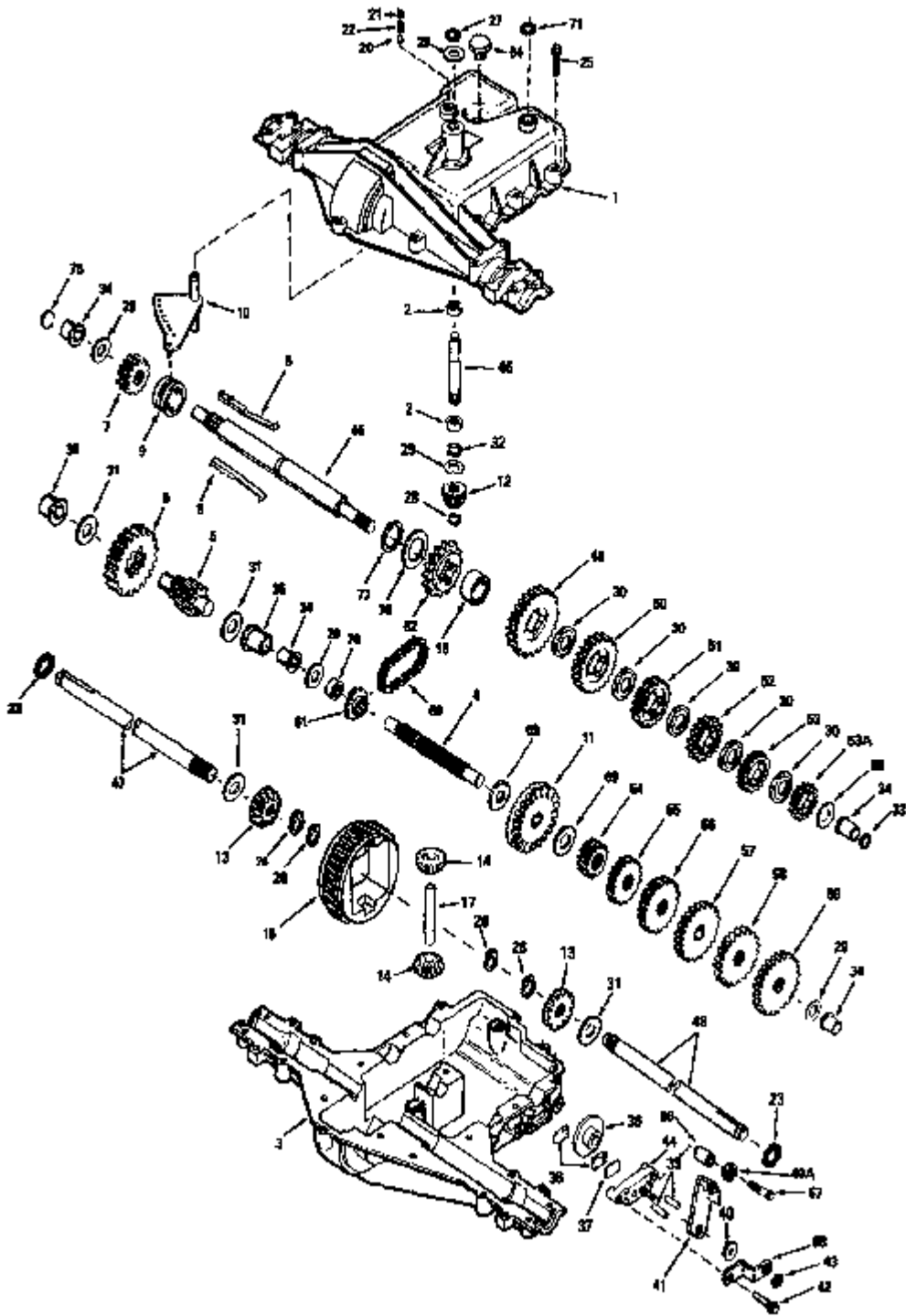


KEY NO.	PART NO.	DESCRIPTION	KEY NO.	PART NO.	DESCRIPTION
1	532 12 93-65	Mower Asm.	51	532 12 17-19	Lever, Lift
2	873 68 05-00	Nut, Crownlock 5/16-18	52	532 12 56-31	Grip, Handle
3	872 14 05-06	Bolt, Carriage 5116-18x3/4	53	532 12 59-25	Button, Plunger
4	532 12 50-74	Runner, LH	54	532 12 59-25	Plunger, Lever, Lift
5	532 11 04-85	Bearing, Ball, Mandrel	55	532 12 48-74	Spring Compression
6	532 12 87-74	Housing, Vented Mandrel	56	532 12 17-19	Rod Asm., Lever
7	532 12 98-95	Bearing, Ball	57	812 00 00-22	Ring, E
8	532 13 31-72	Shaft, Mandrel, Mower, Vented	58	819 29 20-16	Washer 29/32 x 1-1/4 x 16 Ga.
9	532 12 78-42	Blade, Mower, High Performance	59	532 13 12-88	Rod, Brake RH
10	532 12 99-62	Washer, Hard, Mower, Vented	60	532 13 12-89	Rod, Brake LH
11	810 04 06-00	Washer, Lock Hvy 3/8	61	876 02 03-12	Pin, Cotter 3/32 x 3/4
12	532 85 08-57	Bolt, Blade 3/8-24 x 1 -1/4 Gr. 8 AYP	62	532 13 35-51	Rod, Pivot
13	532 12 89-61	Stripper, Mower, Vented	63	532 13 35-04	Rod, Clutch, Secondary
14	532 10 67-36	Shield, Deflector	64	872 11 06-14	Bolt, Carriage 3/8-16 x 1 -3/4
15	532 10 67-35	Rod, Hinge	65	532 13 35-50	Rod, Clutch Primary
16	532 10 58-96	Bracket, Deflector, Mower	66	873 35 06-00	Nut, Hex Jam 3/8-16
17	532 11 04-52	Nut, Push	67	532 13 32-05	Trunnion 3/8-16
18	532 10 67-34	Spring, Deflector	68	532 12 47-88	Spring, Retainer
19	819 11 14-16	Washer 11/32 x 5/8 x 16 Ga.	69	532 12 74-98	Bushing
20	532 10 53-04	Cap, Sleeve	70	532 12 87-59	Spring
21	532 12 87-72	Runner, RH	71	532 13 18-13	Arm Asm., Clutch, Primary
22	819 11 14-16	Washer 11/32 x 3/4 x 16 Ga.	72	532 13 20-44	Knob
23	874 76 05-28	Bolt, Mandrel 5/16-18 x 1-3/8	73	532 12 17-48	Washer 25/32 x 1-5/8 x 16 Ga.
24	532 12 46-70	Retainer, Spring	74	812 00 00-29	Ring, Klip
25	874 76 06-36	Bolt, 3/8-16 x 2-1/4	75	532 12 89-03	Bolt, Shoulder
26	819 13 13-16	Washer 13/32 x 13/16 x 12 Ga.	76	532 12 78-45	Keeper, Spring
27	532 12 72-18	Link Asm., Front	77	532 12 78-47	Arm, Clutch, Secondary
28	873 68 08-00	Nut, Jam Hex 1/2-13 UNC	78	532 13 18-70	Spring, Return
29	532 13 01-71	Trunnion	79	532 13 08-40	Brake Asm., Mower, Vented
30	873 68 08-00	Locknut 1/2-13	80	874 76 05-14	Screw, Hex 5/16-18 x 7/8
31	532 12 72-24	Link, Lift, RH	81	812 00 00-37	Ring, Klip
32	532 13 55-63	Pin, Spring 5116-314	82	532 11 08-07	Nut, Special
33	532 13 37-10	Arm, Suspension, Rear	83	819 13 10-16	Washer 13/32 x 5/8 x 16 Ga.
34	532 12 72-23	Link, Lift, LH	85	876 02 03-12	Pin, Cotter 3132x314
35	873 71 07-00	Nut, Hex Jam ASP 7/16-20 UNF	86	532 11 07-29	Rod, Adjust, Lift
36	532 11 04-47	Trunnion, Lift	87	532 12 18-91	Knob, Adjust, Lift
37	873 71 07-00	Nut, Crownlock Jam 7/16-24 UNF	88	532 12 49-97	Key, Woodruff
38	532 13 38-40	Idler, Arm	89	532 11 08-10	Trunnion
39	532 12 99-63	Washer, Spacer, Mower, Vented	90	819 15 12-16	Washer 15/32 x 3/4 x 16 Ga.
40	532 12 92-06	Pulley, Mandrel, Single	91	532 13 22-64	Roller Nose
41	873 05 09-00	Nut, Flangelock 9/16	92	874 76 06-24	Bolt, Hex 3/8-16 x 1
42	532 13 14-94	Pulley, Idler, Flat	93	819 17 16-16	Washer 17/32 x 7/8 16 Ga.
43	532 12 20-52	Spacer, Retainer	94	532 13 22-73	Bracket Asm., Nose Roller R.H.
44	819 13 13-16	Washer 13/32 x 13/16 x 16 Ga.	95	532 13 22-74	Bracket Asm., Nose Roller L.H.
45	873 68 06-00	Nut, Crownlock 3/8-16	--	532 13 23-78	Deck, Complete
46	532 13 12-90	Belt	--	532 13 07-94	Mandrel Asm. (Includes Key No.'s 5, 7, 8, 10-12, 39 And 41)
47	532 13 35-02	Spacer, Arm Idler			
48	532 13 35-03	Stiffener, Arm Idler			
49	532 13 18-74	Shaft Asm., Lift			
50	817 49 06-08	Screw, Set, Hex Skt. 3/8-16 x 3/8			

NOTE: All component dimensions given in U.S. inches. 1 inch = 25.4 mm

TRANSAXLE PEERLESS – MODEL NO. 930-010

H



TRANSAXLE PEERLESS – MODEL NO. 930-010



REF PART NO. NO.	DESCRIPTION	REF PART NO. NO.	DESCRIPTION
1 772108	Cover, Transaxle	40A792128	Washer, Flat
2 780086	Bearing, Needle	41 790047	Lever, Brake
3 770102	Case, Transaxle	42 792073	Screw, Flanged Hex Head, Thread Forming 1/4-20 x 1 -1/4
4 776260	haft, Counter	43 792075	Locknut 5/16-24
5 776219	haft and Pinion Assembly, Output	44 790025	Holder, Brake Pad
6 778139	Gear, Output	45 776315A	Shaft, Brake, 4-Keyed
7 778136	Gear Spur 15 Teeth	46 776135	Shaft, Input
8 792136	Key	47 774690	Axle, 11 -15/16"
9 784352	Collar, Shifter	48 774691	Axle, 16-1/2"
10 784355	Rod & Fork Assembly, Shift	49 778191	Gear, Spur 37 Teeth
11 778229	Gear, Bevel 42 Teeth	50 778125	Gear, Spur 35 Teeth
12 778113A	Bevel Pinion, Input	51 778124A	Gear, Spur 30 Teeth
13 778221	Gear, Bevel	52 778123A	Gear, Spur 25 Teeth
14 778068	Gear, Bevel Pinion	53 778122A	Gear, Spur 22 Teeth
15 778260	Gear, Ring	53A 778209	Gear, Spur 19 Teeth
17 786139	Pin, Drive	54 778230	Gear, Spur 12 Teeth
18 786102	Spacer, Neutral	55 773151	Gear, Spur 15 Teeth
20 792077	Ball, Steel 5/16" diameter	56 778126A	Gear, Spur 20 Teeth
21 792078	Set Screw 318-16x318	57 778127A	Gear, Spur 25 Teeth
22 792079	Spring	58 778128A	Gear, Spur 28 Teeth
23 788061	Ring, Felt	59 778163	Gear, Spur 31 Teeth
25 792073	Screw, Flanged Hex Head, Thread Forming 1/4-20 x 1 -1/4	60 786081	Chain, Roller (Number 41 Chain, 24 Links)
26 792125	Ring, Retainer (4 Required, Package Of 2)	61 786082	Sprocket 9 Teeth
27 792035	Ring, Retainer	62 786123	Sprocket 18 Teeth
28 788040	Ring, Retainer	64 792074	Plug, Hex Head, Threaded 9/16-18
29 780072	Washer, Thrust	65 780109	Washer, Thrust
30 780108	Washer, Thrust	66 786067	Spacer
31 780001	Washer	67 792085	Screw, Flanged Hex Head, Thread Forming 1/4-20 x 2-1/4
32 792001	"O" Ring	68 786086	Bracket, Brake Lever
33 788051	Seal, Square Cut	69 780051	Washer, Thrust
34 780105A	Bushing, Flanged	70 786118	Spacer
35 780118A	Bushing, Flanged	71 788069	Seal, Square Cut
36 790003	Disk, Brake	75 786116	Disk
37 790007	Plate, Brake Pad	76 780090	Washer, Thrust
38 790006	Pad, Brake	77 788075	Ring, Retaining
39 786026	Pin, Dowel		
40 792076	Washer, Flat		

NOTE: All component dimensions given in U.S. inches
1 inch = 25.4 mm

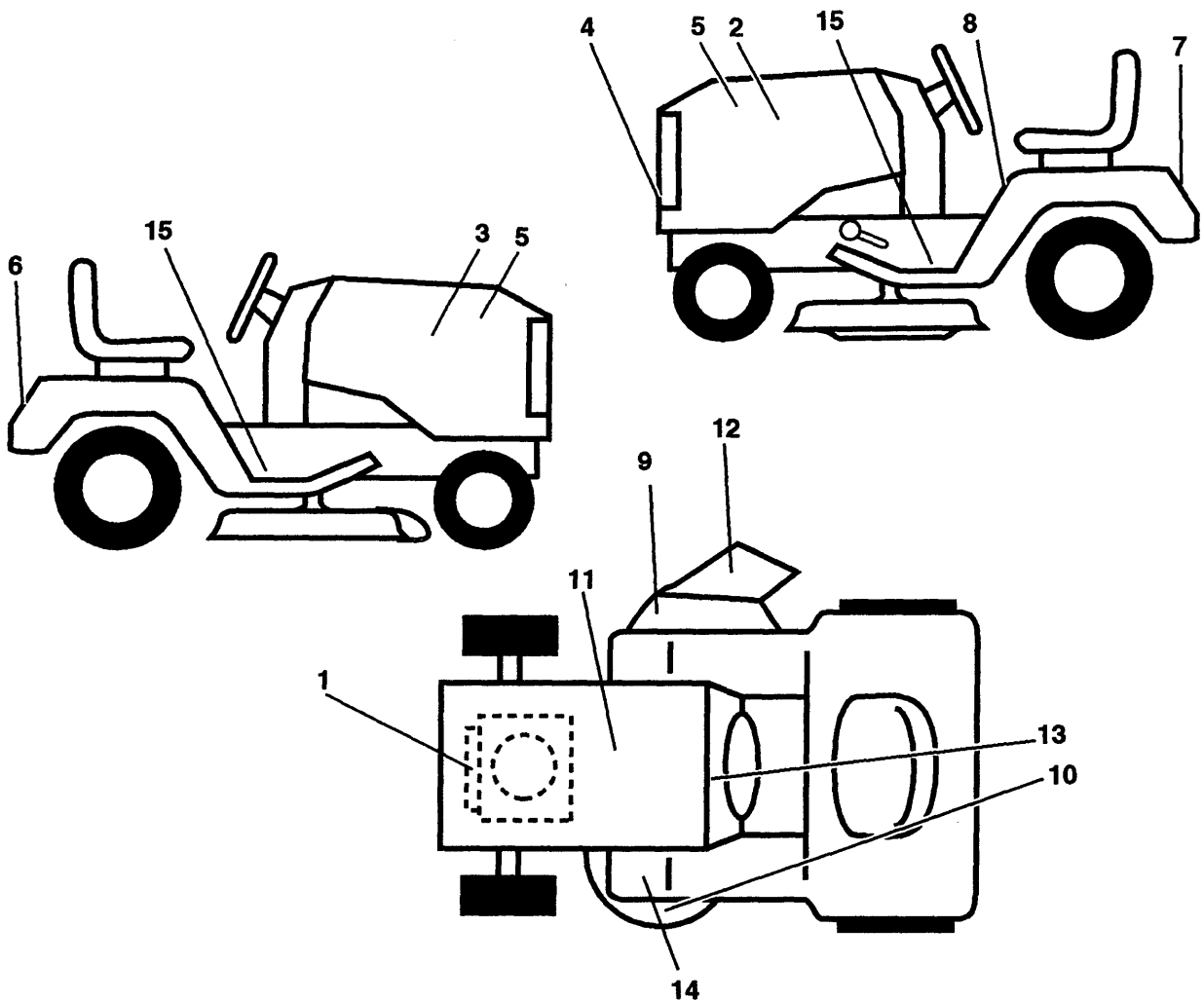
NOTE: All components must be ordered through Peerless

O.B.S.

Komponenter ingående i växellådan kan ej beställas från Husqvarna. Beställ från Peerless agenten.

DECALS

J



KEY NO.	PART NO.	DESCRIPTION	KEY NO.	PART NO.	DESCRIPTION
1	532 12 90-57	Decal, HP, Engine	# 10	532 12 61-96	Decal, Rotating Blades (English/French/German/Dutch)
2	532 13 15-91	Decal, Hood L.H.	# 10	532 12 63-46	Decal, Rotating Blades (Spanish/Italian)
3	532 13 15-90	Decal, Hood, R.H.	11	532 12 15-49	Decal, Battery, Caution
4	532 12 59-89	Decal, Logo, Grill	12	532 12 61-93	Decal, Caution, Deflector (Swedish/Danish/Finnish/Norwegian)
5	532 12 60-35	Decal, Speed, Side Panel	# --	532 12 61-94	Decal, Caution, Deflector (English/French/German/Dutch)
6	532 13 15-82	Decal, Logo, Fender	# --	532 12 63-47	Decal, Caution, Deflector (Spanish/Italian)
7	532 12 56-90	Decal, 100 DBA	# --	532 10 15-39	Sheet, Instruction, Tractor, 15 Degree Slope, (English)
--	532 12 61-87	Decal, Certification, (French/Dutch)	# --	532 10 15-72	Sheet, Instruction, Tractor, 15 Degree Slope, (French)
8	532 12 08-22	Decal, Caution, (English/French)	# --	532 13 23-59	Manual, Operator's, (European)
--	532 12 61-56	Decal, Instruction, Warning, (Swedish/Danish/Finnish/Norwegian)	# --	532 13 23-60	Manual, Operator's, (Scandinavian)
--	532 12 63-48	Decal, Instruction, Warning, (Spanish/Italian)	# 13	532 10 98-21	Decal, Operation/Instruction (English/French)
9	532 12 61-91	Decal, Warning, Cut Finger, (Swedish/Danish/Finnish/Norwegian)	# 14	532 10 18-92	Decal, Clutch/Brake, (English/French)
--	532 12 61-92	Decal, Warning, Cut Finger, (English/French/German/Dutch)	# 15	532 12 59-46	Decal, Chassis
--	532 12 63-45	Decal, Warning, Cut Finger (Spanish/Italian)			
10	532 12 61-95	Decal, Rotating Blades (Swedish/Danish/Finnish/Norwegian)			

NOTE: All component dimensions given in U.S. inches.
1 inch = 25.4 mm