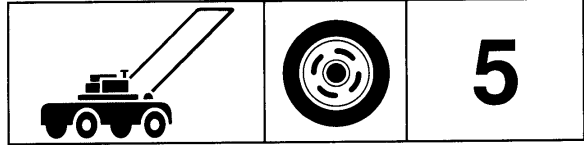


 **Husqvarna**



Jet 55S



1.1992

Spare parts

Ersatzteile

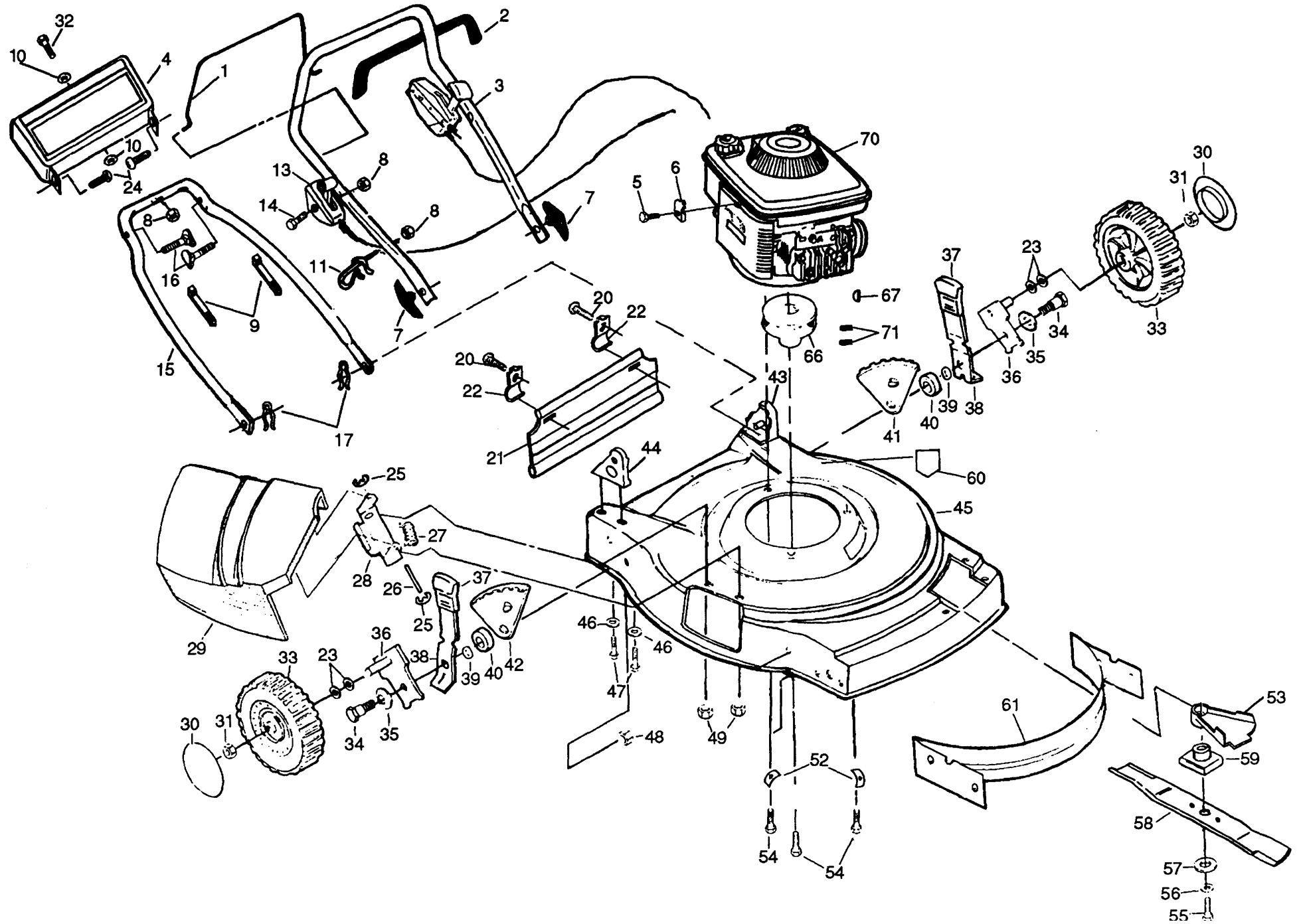
Pièces détachées

Reserve onderdelen

Repuestos

Reservdelar

A

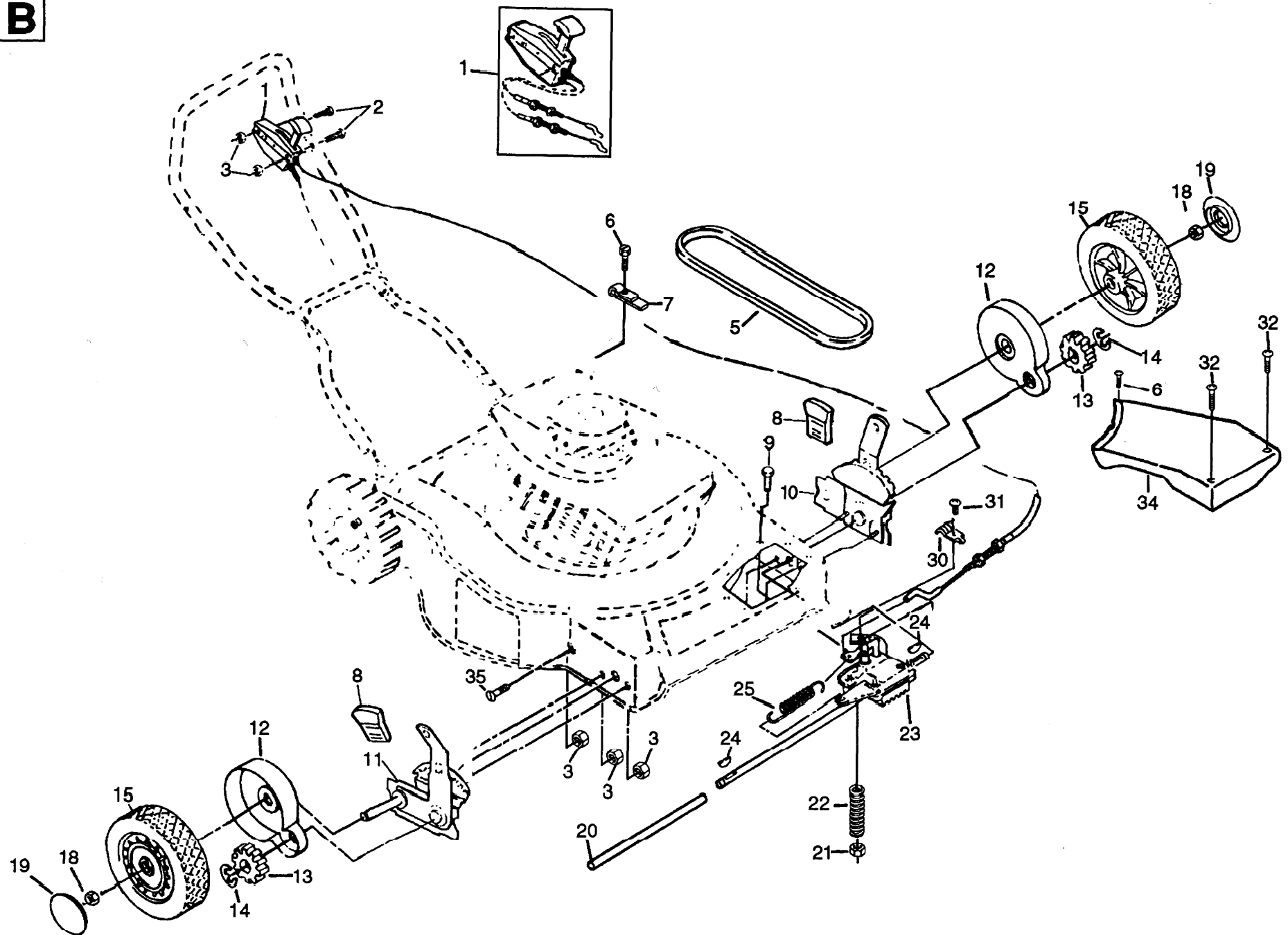




| KEY PART NO. NO. | DESCRIPTION | KEY PART NO. NO. | DESCRIPTION | | |
|------------------|--------------|-----------------------------------|-------------|----------------|--|
| 1 | 532 13 10-95 | Control Bar | 38 | 532 12 52-59 | Selector Spring |
| 2 | 532 85 07-24 | Handle Grip | 39 | 819 13 10-16 | Flat Washer 3/8 |
| 3 | 532 12 50-71 | Upper Handle | 40 | 532 08 49-20 | Spacer |
| 4 | 532 80 05-47 | Trim Plate | 41 | 532 80 03-70 | Wheel Adjusting Bracket (Left) |
| 5 | 874 64 10-08 | Thread Rolling Screw #10-32 x 5/8 | 42 | 532 80 03-68 | Wheel Adjusting Bracket (Right) |
| 6 | 532 85 12-19 | * Cable Clamp | 43 | 532 12 50-49 | Handle Bracket Assembly (Left) |
| 7 | 532 06 36-88 | Handle Knob | 44 | 532 12 50-47 | Handle Bracket Assembly (Right) |
| 8 | 532 06 36-01 | Locknut 1/4-20 | 45 | 532 13 08-76 | Lawn Mower Housing |
| 9 | 532 06 64-26 | Wire Ties | 46 | 819 11 14-16 | Washer |
| 10 | 819 09 10-16 | Washer Plate | 47 | 874 78 05-16 | Self Tapping Screw 5/16-18 x 3/4 |
| 11 | 532 13 20-01 | Rope Guide | 48 | 873 68 06-00 | Locknut 3/8-16 |
| 13 | 532 13 25-36 | Throttle Control | 49 | 873 68 04-00 | Locknut 1/4-20 |
| 14 | 874 76 06-44 | Screw | 52 | 532 12 50-78 | Washer |
| 15 | 532 12 52-14 | Lower Handle | 53 | 532 13 46-12 | Debris Shield |
| 16 | 532 13 19-59 | Handle Bolt 5/16-18 x 1 -3/4 | 54 | 532 85 09-98 | Hex Head Thread Rolling Screw 3/8-16 x 1 |
| 17 | 532 05 17-93 | Hairpin Cotter | 55 | 532 85 10-84 | Hex Head Screw 3/8-24 x 1 -3/8 Grade 8 |
| 20 | 532 75 00-97 | Screw, Hex, #10-24 x 1/2 | 56 | 532 85 02-63 | Washer, Lock Helical 3/8 |
| 21 | 532 12 87-97 | Rear Skirt | 57 | 532 85 10-74 | Hardened Washer |
| 22 | 532 12 52-07 | Skirt Bracket | 58 | 532 85 09-73 | 22" Blade |
| 23 | 532 75 16-58 | Wave Washer | 59 | 532 85 15-14 | Blade Adapter |
| 24 | 532 03 69-53 | Screw, #10-24 x 5/8 | 60 | 532 10 73-39 | Danger Decal |
| 25 | 812 00 00-14 | E-Ring | 61 | 532 12 50-56 | Front Baffle |
| 26 | 532 08 75-90 | Hinge Rod | 66 | 532 08 45-96 | Engine Pulley |
| 27 | 532 08 75-89 | Torsion Spring | 67 | 532 08 76-77 | Hi-Pro Key #HP 505 |
| 28 | 532 08 75-93 | Housing Bracket Assembly | 70 | --- -- -- -- | * Engine - Briggs & Stratton |
| 29 | 532 85 07-78 | Discharge Guard | | | Model No.124702 |
| 30 | 532 85 08-44 | Hubcap | 71 | 532 05 90-78 | Set Screw |
| 31 | 532 08 39-23 | Locknut 3/8-16 | — | 532 12 53-81 | Rear Baffle (Not Shown) |
| 32 | 532 08 54-36 | Screw, 1/4-20 x 1-1/2 | # | — 532 13 21-03 | Operator's Manual (Scand) |
| 33 | 532 80 03-33 | Wheel & Tire Assembly 8.00 x 2.00 | # | — 532 13 21-02 | Operator's Manual (Euro) |
| 34 | 532 08 49-21 | Shoulder Bolt 3/8-16 | — | 532 85 07-95 | Housing Stripe Decal |
| 35 | 532 06 23-35 | Belleville Washer 1/2 | — | 532 80 05-69 | Engine Decal |
| 36 | 532 12 50-61 | Axle Arm Assembly | — | 532 80 06-39 | Warning Decal |
| 37 | 532 13 28-00 | Selector Knob | # | — 532 80 11-13 | Warning Decal |

* These Parts must be purchased through an authorised Briggs & Stratton Dealer.

B

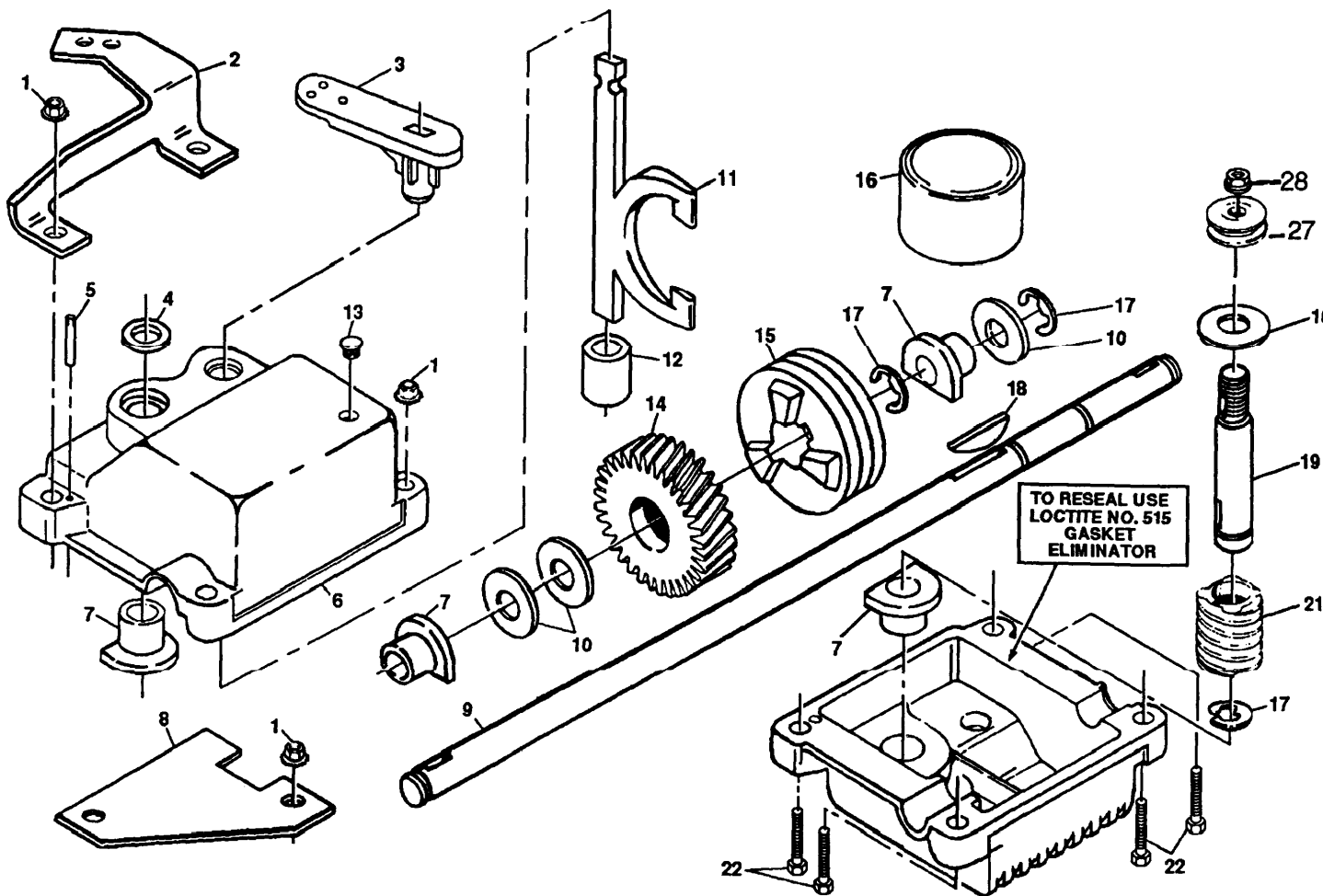




| KEY PART NO. NO. | DESCRIPTION |
|---------------------|--|
| 1 532 13 59-05 | Dual Head Cable Control Assembly |
| 2 874 76 04-44 | Pan Head Machine Screw 1/4-20 x 2-1/8 |
| 3 532 06 36-01 | Locknut |
| 5 532 08 36-91 | V-Belt |
| 6 532 75 00-97 | Hex Washer Head Screw # 10-24 x 1/2 |
| 7 532 08 79-30 | Clip Guide (Housing) |
| 8 532 13 28-00 | Selector Knob |
| 9 874 76 04-44 | Hex Head Bolt 1/4-20 x 2-3/4 |
| 10 532 80 08-89 | Wheel Adjuster Assembly (Left) |
| 11 532 80 08-88 | Wheel Adjuster Assembly (Right) |
| 12 532 07 64-01 | Dust Cover |
| 13 532 07 45-07 | Pinion |
| 14 812 00 00-03 | E-Ring |
| 15 532 85 08-46 | Wheel & Tire Assembly 8.00 x 2.00 |
| 18 532 08 39-23 | Locknut |

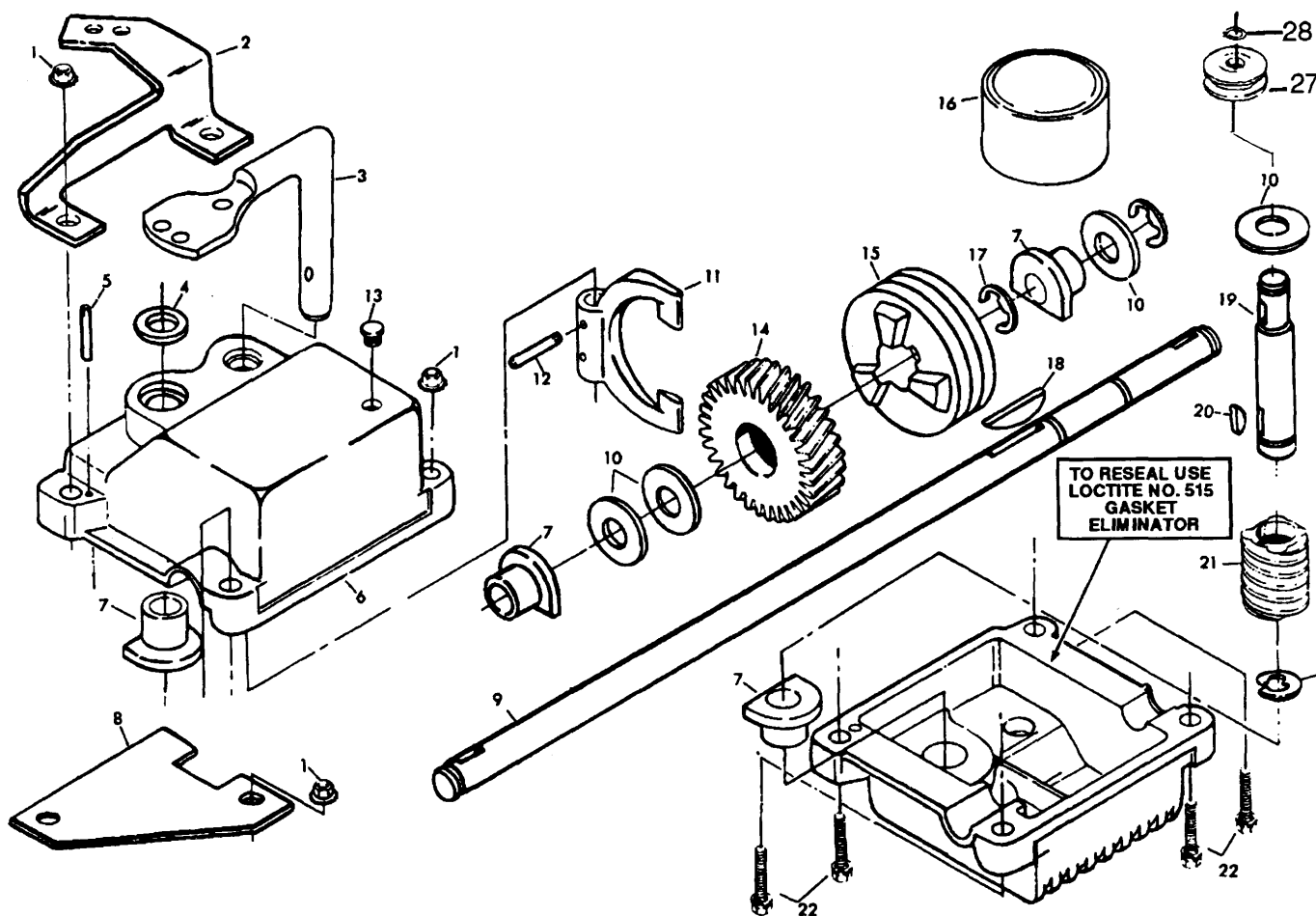
| KEY PART NO. NO. | DESCRIPTION |
|---------------------|---|
| 19 532 85 08-44 | Hubcap |
| 20 532 08 60-12 | Drive Shaft Cover |
| 21 532 06 80-38 | Locknut |
| 22 532 07 51-92 | Spring |
| 23 532 13 22-32 | Gear Case Assembly |
| 24 532 06 56-92 | Woodruff Key #3 |
| 25 532 08 36-32 | Spring |
| 30 532 08 37-00 | Cable Clamp |
| 31 817 02 10-08 | Pan Head Self Tapping Screw #10-24 x 3/8 |
| 32 532 08 78-66 | Pan Head Tapping Screw #10-24 x 2-3/4 |
| 34 532 13 29-84 | Drive Cover |
| 35 874 10 04-12 | Flat Head Machine Screw 1 /4-20 x.75 |
| -- 532 80 08-21 | Drive Control Decal |

* These Parts must be purchased through an authorised Briggs & Stratton Dealer.

C**22" POWER-PROPELLED LAWN MOWER JET 55SD****GEAR CASE ASSEMBLY PART NUMBER 132232****KEY PART NO. NO.****DESCRIPTION**

| | | |
|----|--------------|--|
| 1 | 873 68 04-00 | Locknut, Keps 1/4-20 |
| 2 | 532 08 51-78 | Bracket, Adjusting |
| 3 | 532 13 14-83 | Shifter |
| 4 | 532 05 70-72 | Seal |
| 5 | 532 05 73-88 | Pin, Grooved 1/8 x 1/2 |
| 6 | 532 04 80-32 | Gear Case Halves, Upper and Lower (Includes Key #4, 5 and 7) |
| 7 | 532 07 78-81 | Bearing |
| 8 | 532 07 70-39 | Bracket, Spring |
| 9 | 532 75 04-30 | Drive Shaft |
| 10 | 532 05 70-79 | Washer, Hardened |
| 11 | 532 13 14-84 | Yoke Clutch |
| 12 | 532 13 14-85 | Bushing |
| 13 | 532 08 64-47 | Plug |
| 14 | 532 13 38-04 | Gear, Helical |
| 15 | 532 75 04-36 | Jaw, Clutch |
| 16 | 532 75 03-55 | Grease |
| 17 | 532 12 53-34 | E-Ring |
| 18 | 532 85 08-48 | Key, Hi-Pro |
| 19 | 532 13 14-81 | Shaft, Worm |
| 21 | 532 08 36-80 | Worm |
| 22 | 874 76 04-24 | Screw, Hex Head 1/420 x 1-1/4 |
| 27 | 532 13 14-82 | Drive Pulley |
| 28 | 532 13 20-10 | Flanged Locknut |

NOTE: All component dimensions gives in U.S. inches
1 inch = 25.4 mm

D**GEAR CASE ASSEMBLY -- PART NUMBER 532 04 81-84****KEY PART NO. NO.****DESCRIPTION**

| | | |
|----|--------------|---|
| 1 | 873 68 04-00 | Keps Locknut 1/4-20 |
| 2 | 532 08 51-78 | Adjusting Bracket |
| 3 | 532 08 83-86 | Shifter Assembly |
| 4 | 532 05 70-72 | Seal |
| 5 | 532 05 73-88 | Grooved Pin 1/8 x 1/2 |
| 6 | 532 04 80-32 | Gear Case Halves (Includes Upper and Lower Halves and Key Nos. 4, 5, and 7) |
| 7 | 532 07 78-81 | Bearing |
| 8 | 532 07 70-39 | Spring Bracket |
| 9 | 532 75 04-30 | Drive Shaft |
| 10 | 532 05 70-79 | Hardened Washer |
| 11 | 532 07 51-44 | Yoke Clutch |
| 12 | 532 08 78-22 | Grooved Pin 1/8 x 3/4 |
| 13 | 532 08 64-47 | Plug |
| 14 | 532 08 36-59 | Helical Gear |
| 15 | 532 75 04-36 | Jaw Clutch |
| 16 | 532 75 03-55 | Grease |
| 17 | 532 05 37-53 | E-Ring |
| 18 | 532 85 08-48 | Hi-Pro Key |
| 19 | 532 08 37-20 | Worm Shaft |
| 20 | 532 06 56-92 | Woodruff Key #3 |
| 21 | 532 08 36-80 | Worm |
| 22 | 874 76 04-24 | Hex Head Machine Screw 1/4-20 x 1-1/4 |
| 27 | 532083681 | Drive Pulley |
| 28 | 532074976 | Retaining Ring |