

H Husqvarna



13

ST 826



1.1994

Spare parts

Ersatzteile

Pièces détachées

Reserve onderdelen

Repuestos

Reservdelar

Replaces

Ersetzt

Remplace

Vervangt

Reemplaza

Ersätter

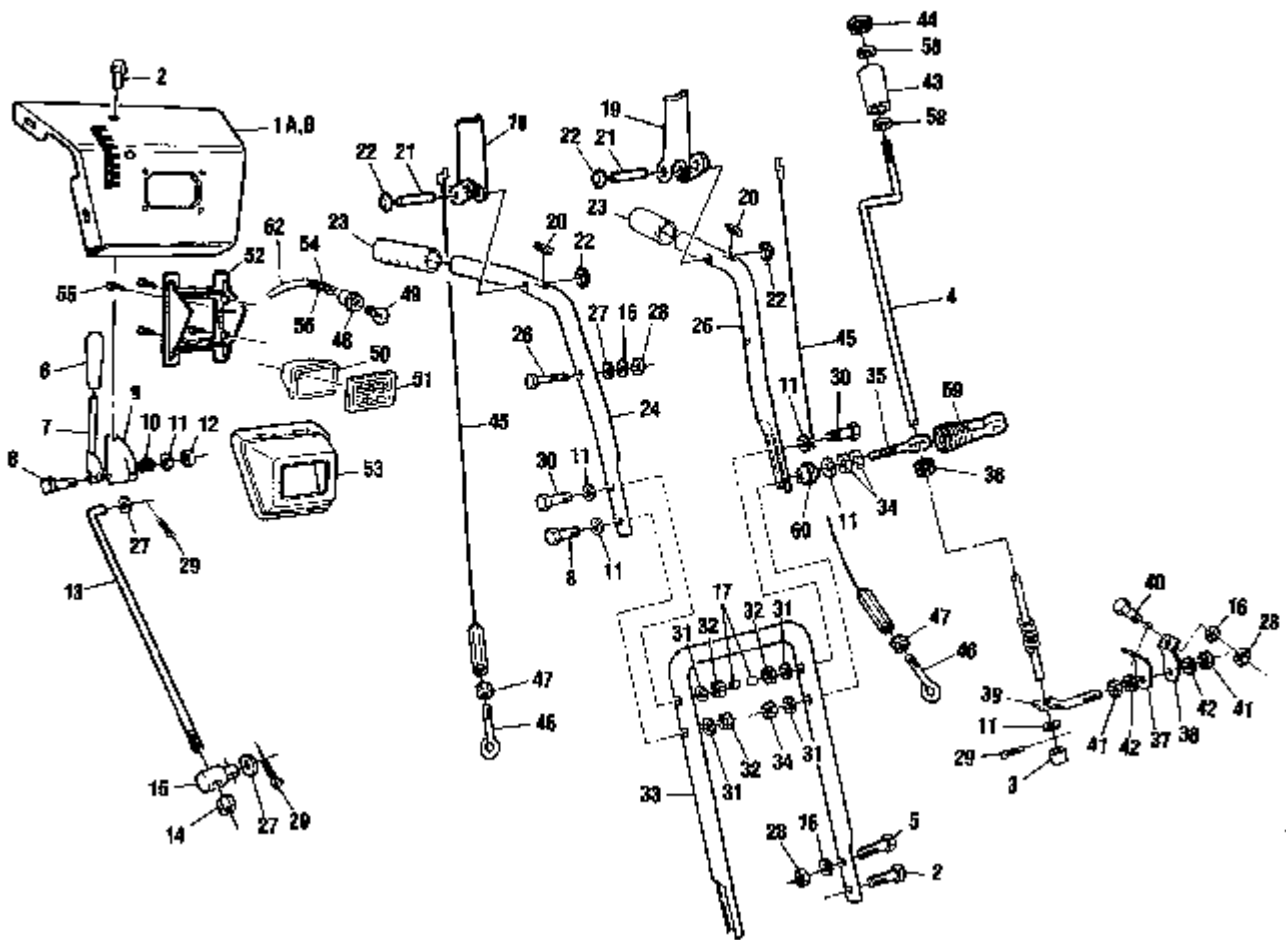
no 106 23 41-62

106 24 03-62

RECEIVED HUSQVARNA

A: Upper Handle Assembly

Model 826



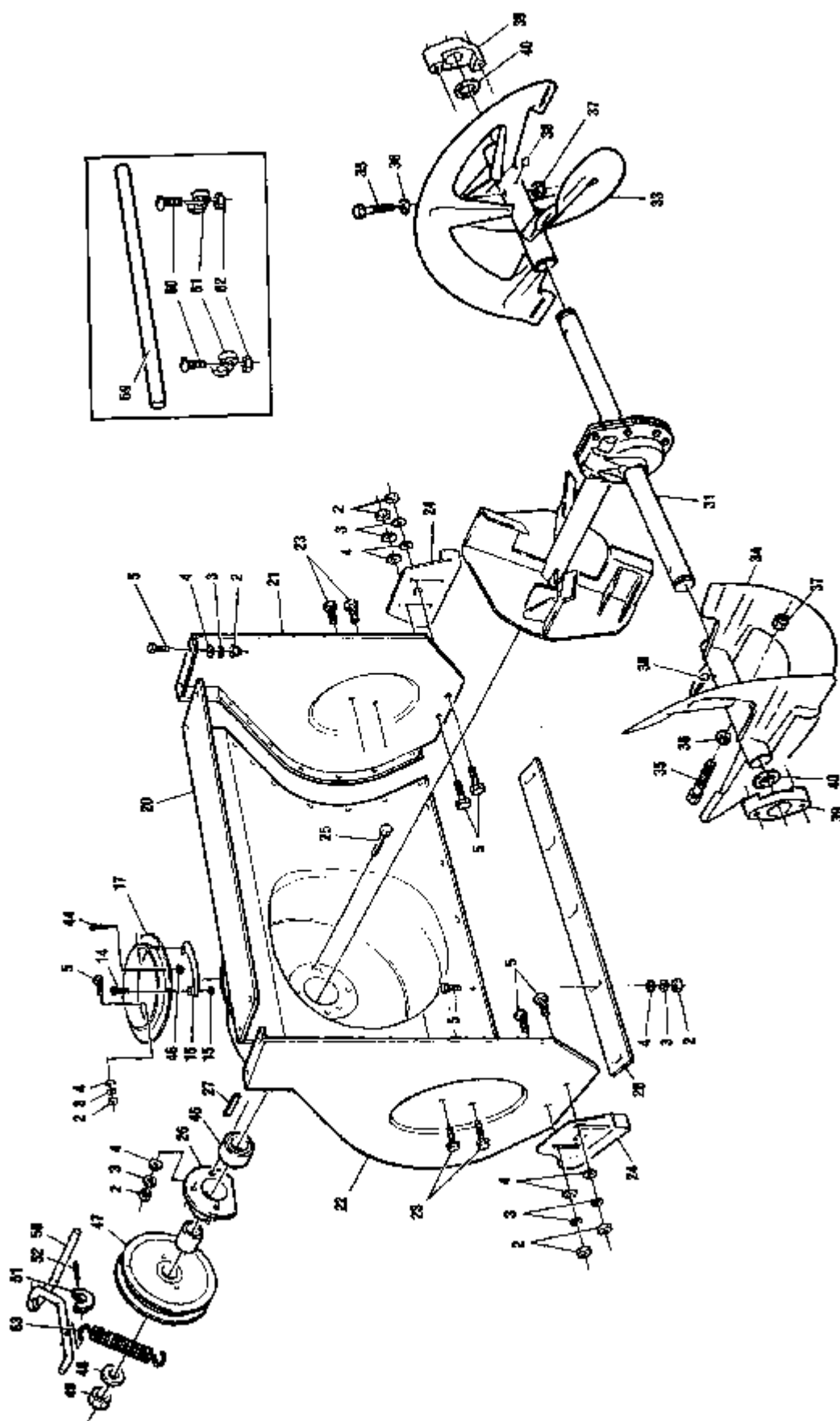
A: Upper Handle Assembly

Model 826

Ref. No.	Part No.	Description
1	533 58 44-34	Control Panel
2	533 07 09-82	5/16-18 x 1/2 Self Tapping Screw
3	533 00 01-04	Plastic Cap
4	533 08 51-92	Crank
5	874 78 05-12	5/16-18 x 3/4 Bolt
6	533 05 07-80	Control Knob
7	533 08 50-31	Speed Select Lever
8	874 78 06-28	3/8-16 x 1-3/4 Bolt
9	533 08 51-22	Bracket Speed Control
10	533 05 07-86	Spring
11	533 07 10-72	3/8 Flat Washer
12	873 68 06-00	3/8- 16 Locknut
13	533 58 45-63	Rod Speed Control
14	533 07 10-42	5/16-24 Hex Nut
15	533 58 45-93	Trunnion Nut
16	810 04 05-00	5/16 Lockwasher
17	533 00 72-89	Plastic Stop
18	533 00 97-32	Clutch Handle R.H.
19	533 00 97-29	Clutch Handle L. H.
20	533 00 67-65	Bumper
21	533 00 35-38	Pivot Pin
22	533 00 35-35	5/16 Cap Retainer
23	533 05 07-92	Handle Grip
24	533 00 51-15	Upper Handle R.H.
25	533 00 51-13	Upper Handle L.H.
26	874 78 05-28	5/16-18 x 1-3/4 Bolt
27	734 11 62-71	5/16 Flat Washer
28	873 68 05-00	5/16-18 Hex Nut
29	876 02 03-12	3/32 x 3/4 Cotter Pin
30	874 78 06-48	3/8-16 x 3 Bolt
31	810 04 06-00	3/8 Lockwasher
32	873 22 06-00	3/8-16 Hex Nut
33	533 00 55-43	Lower handle
34	533 07 10-45	3/8- 16 Jam Nut
35	533 07 14-57	3/8 Eye Bolt
36	533 00 01-48	Grommet
37	533 00 70-52	Bracket Chute Rotate L.H.
38	533 01 05-84	Bracket Chute Rotate R.H
39	533 00 70-55	Rod Chute Control
40	872 14 06-06	5/16-18 x 3/4 Carriage Bolt
41	533 00 70-58	1/2-20 Jam Nut
42	810 04 08-00	1/2 Lockwasher
43	533 30 73-99	Handle Crank
44	533 57 81-59	3/8 Cap retainer
45	533 58 47-47	Clutch Cable
46	533 58 47-48	10-24 Eye Bolt
47	873 27 10-00	10-24 Hex Nut
48	533 57 92-69	Socket, Light
49	533 58 15-76	Light, Bulb
50	533 57 92-68	Housing, Light
51	533 57 92-66	Lens, Cover
52	533 58 56-48	Headlamp Bracket
53	533 58 56-49	Headlamp, Housing
54	533 30 57-43	Wire, Headlight
55	533 58 46-72	8 x .75 Screw
56	533 30 57-40	Wire Ground
57	533 00 66-36	Wire Conduit
58	533 30 93-12	Washer 39 x .70 x .05
59	533 30 81-45	Boot, Eyebolt
60	533 30 93-44	Adaptor Boot

B: Auger Housing Assembly

Model 826



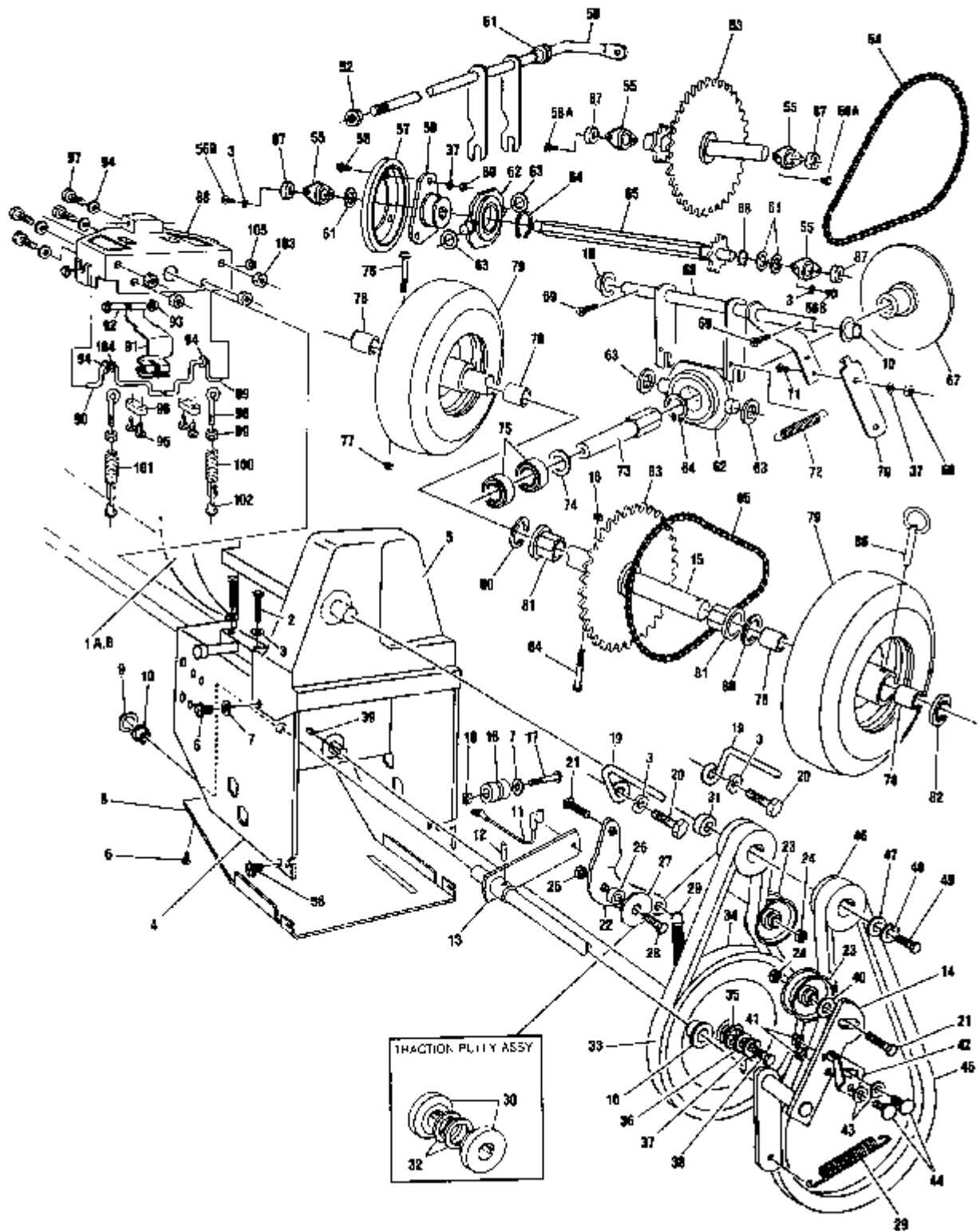
B: Auger Housing Assembly

Model 826

Ref. No.	Part No.	Description
2	873 68 05-00	5/16-18 Hex Nut
3	810 04 05-00	5/16 Lockwasher
4	533 07 10-71	5/16 Flatwasher
5	872 11 05-06	5/16-18 x 3/4 Carriage Bolt
14	533 07 10-32	8-32 x 1/2 Bolt
15	533 07 10-57	8-32 Locknut
16	533 08 51-13	Retainer
17	533 01 14-97	Flange
20	533 58 56-44	Auger Housing 26"
21	533 00 69-16	Side Plate L.H.
22	533 00 69-15	Side Plate R.H.
23	874 78 05-12	5/16-18 x 3/4 Self Tapping Screw
24	533 87 38-30	Height Adjustor
25	874 78 05-10	5/16-18 x 5/8 Bolt
26	533 58 29-60	Bearing, Retainer
27	533 07 13-71	3/16" Key
28	533 57 75-62	26" Scraper Bar
31	533 00 14-19	26" Gear Box Assembly
33	533 58 56-45	26" Serrated Auger L.H.
34	533 58 56-46	26" Serrated Auger R.H.
35	533 00 95-24	Shear Bolt
36	533 00 39-43	Spacer
37	873 68 04-00	1/4-20 Locknut
38	533 01 01-04	Grease Fitting
39	533 05 37-57	Bushing Auger Shaft
40	533 07 37-55	Washer
43	533 58 31-27	Auger Pulley 7"
44	533 07 09-69	1/4-20 x 1 Bolt
45	873 68 04-00	1/4-20 Locknut
46	533 58 07-81	Bearing
47	533 58 31-61	Spacer, Impeller
48	533 07 10-74	1/2 Washer
49	533 00 52-51	1 /2-20 Lock Nut
50	533 58 09-45	Brake Arm
51	533 58 15-40	Brake Pad
52	533 07 38-01	5/32 x 7/8 Roll Pin
53	533 00 70-30	Return Spring
59	533 05 12-37	Wood Handle
60	533 07 10-31	8-32 x 3/8 Screw
61	533 05 12-38	Handle Clip
62	533 07 10-57	8-32 Hex Nylock Nut

C: Motor Mount Assembly

Model 826



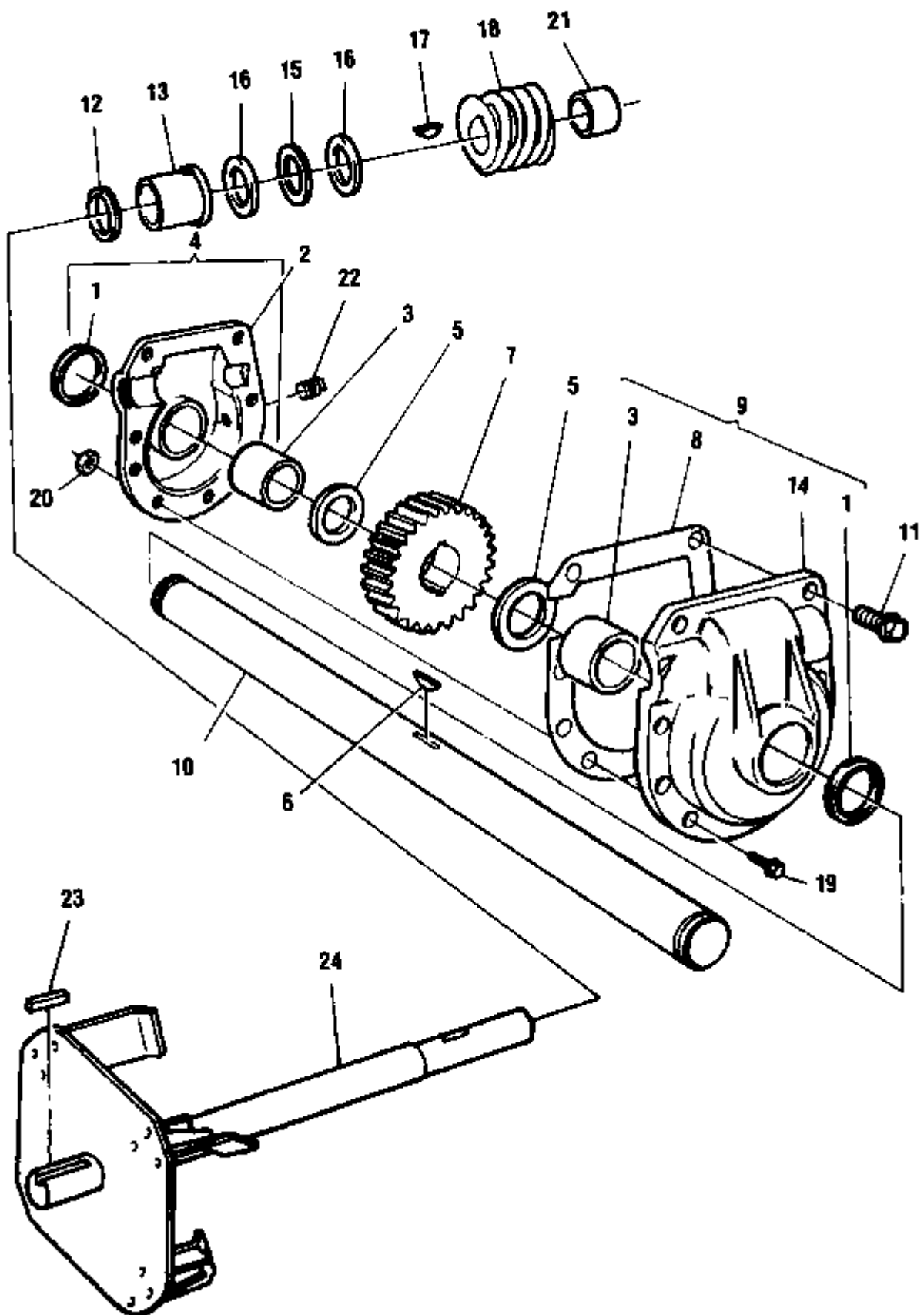
C: Motor Mount Assembly

Model 826

Ref. No.	Part No.	Description	Ref. No.	Part No.	Description
1	533 58 17-03	8 HP Engine	59	533 58 17-73	Friction Wheel Hub
2	874 78 05-24	5/16-18 x 1.5 Bolt	60	873 22 04-00	1/4-20 Hex Nut
3	810 04 05-00	5/16 Lockwasher	61	533 57 98-58	Washer
4	533 33 42-39	Motor Mount	62	533 08 55-01	Trunion Bearing
5	533 58 07-73	Belt Cover	63	533 07 38-12	Trunion Washer
6	533 07 09-78	1/4-20 x 1/2 Self Tap	64	533 07 38-11	1-1/4 Retainer Ring
7	533 07 10-67	1/4 Flat Washer	65	533 57 98-98	Hex Shaft
8	533 58 30-31	Bottom Panel	66	533 57 98-59	Retainer Ring
9	533 07 38-17	Push Nut	67	533 58 34-70	Friction Disc
10	533 05 37-03	Plastic Bushing	68	533 57 99-41	Traction Shaft
11	533 57 98-56	Cable Eye Lever	69	876 02 04-16	1/8 x 1 Cotter Pin
12	533 07 38-01	Roll Pin	70	533 57 99-37	Graction Spring Lever
13	533 57 98-74	Auger Clutch Cable Lever	71	874 78 04-10	1/4-20 x 5/8 Bolt
14	533 58 08-89	Auger Clutch Assembly	72	533 05 38-18	Clutch Spring Return
15	533 58 30-17	Axle	73	533 58 31-55	Traction Hex Shaft
16	533 57 98-60	Spool	74	533 58 09-69	Washer
17	874 76 04-28	1/4-20 x 1-3/4 Bolt	75	533 58 07-81	Ball Bearing
18	873 68 04-00	1/4-20 Nylock Nut	76	533 57 70-15	Shear Bolt
19	533 00 39-49	Belt Guide	77	873 68 04-00	1/4-20 Locknut
20	533 57 87-33	5/16-24 x 5/8 Bolt	78	533 57 85-72	Wheel Bushing
21	874 78 06-20	3/8-16 x 1-1/4 Bolt	79	533 57 88-87	4.80 x 4.00 Wheel
22	533 57 98-72	Idler Lever	80	533 00 61-04	3/4 x 1-1/8 Washer
23	533 05 07-93	Idler Pulley	81	533 58 17-30	Axle Bearing
24	533 00 05-90	3/8-16 Jam Nut	82	533 00 02-39	Retainer Ring
25	873 68 05-00	5/16-18 Nylock Nut	83	533 58 30-07	Sprocket 37T
26	533 57 98-65	Bushing Idler Lever	84	533 07 38-39	1/4-20 x2 1/4 Bolt
27	533 07 37-95	5/16 x 1 -1/4 Flat Washer	85	533 58 30-13	Chain 420 x 41 P
28	874 78 05-12	5/16-18 x 3/4 Bolt	86	533 07 38-42	Click Pin
29	533 05 37-04	Idler Spring	87	533 57 98-63	Bearing
30	533 57 98-54	Traction Pulley	88	533 58 46-35	Plastic Housing
31	533 57 98-55	Crankshaft Washer	89	533 58 47-23	Latch L.H.
32	533 57 98-61	Pulley Spacer	90	533 58 47-24	Latch R.H.
33	533 57 99-32	Traction Belt	91	533 00 84-17	Cam Spring
34	533 58 09-61	Traction pulley	92	533 58 46-73	Spring Pin
35	533 58 09-65	Wave Washer	93	533 07 36-64	3/8 Retainer Cap
36	533 57 89-62	1/4x1 Flat Washer	94	533 07 10-71	5/16Flat Washer
37	810 04 04-00	1/4 Split Lockwasher	95	533 58 46-72	8 x 3/4 Screw
38	874 78 04-10	1/4-20 x 5/8 Bolt	96	533 00 26-37	Clamp
39	533 58 09-70	3/16 Square Key	97	874 78 05-10	5/16-18 x 5/8 Bolt
40	533 07 10-72	3/8 Flat Washer	98	533 58 47-48	10-24 Eye Bolt
41	873 68 04-00	1/4-20 Lock Nut	99	873 27 10-00	10-24 Hex Nut
42	533 58 09-44	Cam Brake Arm	100	533 58 47-99	Spring Drive Clutch
43	533 07 10-71	5/16 Flat Washer	101	533 58 47-98	Spring Auger Clutch
44	872 14 04-05	1/4-20 x 5/8 carriage Bolt	102	533 58 47-50	T-Nut
45	533 58 12-64	Auger Belt	103	873 22 05-00	5/16-18 Hex Nut
46	533 05 37-14	Engine Pulley	104	533 00 05-19	5/16 Retaining Ring
47	533 05 06-77	3/8 x 1-1/4 Flat Washer	105	533 00 35-35	Cap Nut
48	533 07 10-63	3/8 Split Lockwasher			
49	874 61 06-16	3/8-24x1 Bolt			
50	533 58 17-94	Speed Control Lever			
51	533 57 99-44	Plastic Bushing			
52	873 68 06-00	3/8-16 Center Locknut			
53	533 58 30-16	Jack Shaft			
54	533 57 98-67	Chain 420 x40P			
55	533 57 98-50	Bearing Retainer			
56	533 07 09-82	5/16-18 x 1/2 Bolt			
56B	533 00 31-34	5/16-18 x 1/2 Bolt			
57	533 05 38-30	Friction Wheel			
58	874 78 04-40	1/4-20 x Bolt - GR5			

D: Gear Box Assembly

Model 826



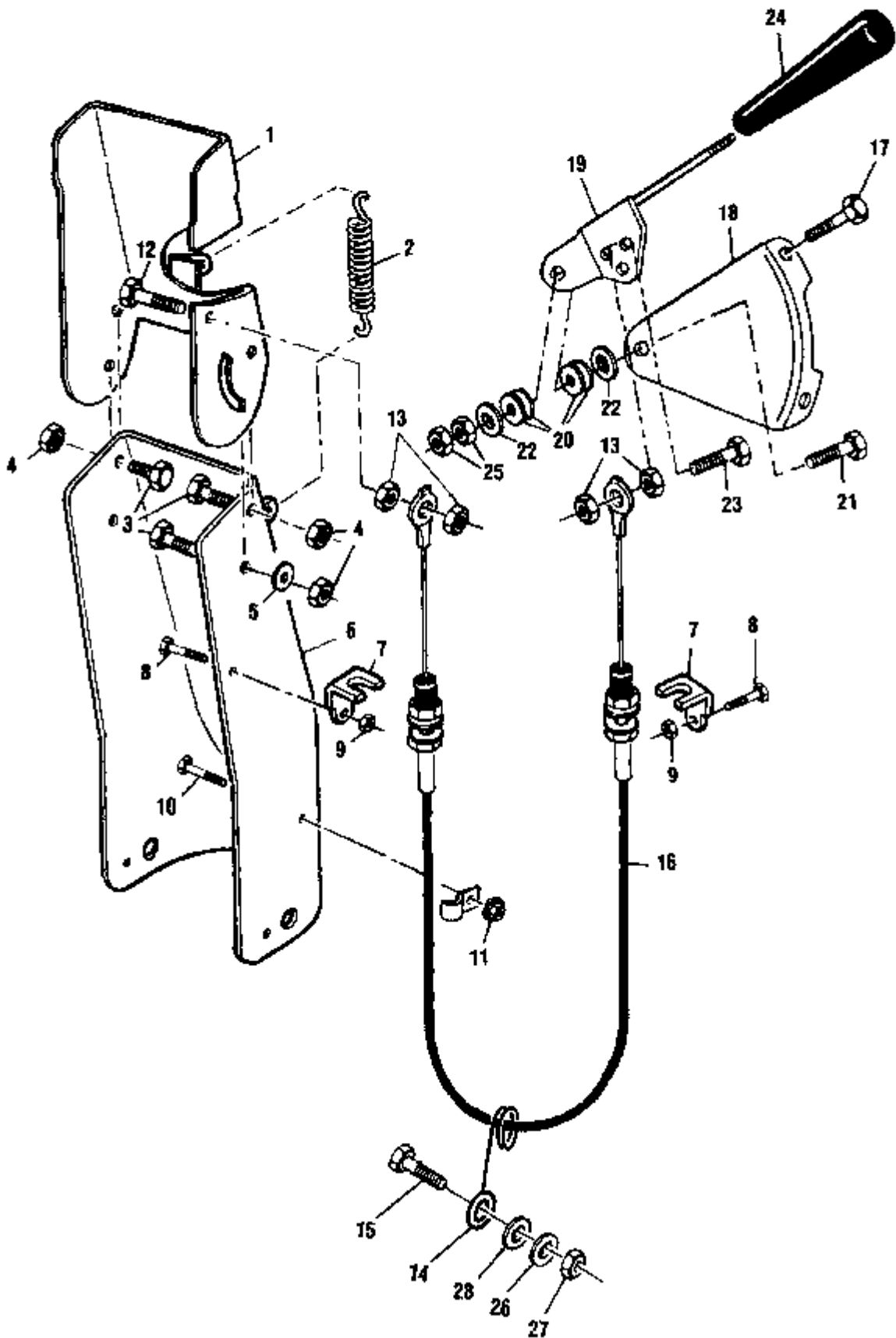
D: Gear Box Assembly

Model 826

Ref. No.		Part No.
Description		
1	533 05 37-44	Seal
2	533 00 08-95	Housing L.H.
3	533 05 37-43	Bearing
4	533 00 08-98	Housing assembly L.H.
5	533 05 37-48	Race thrust
6	533 07 39-05	Key Woodruff #91
7	533 05 37-30	Worm gear
8	533 00 08-97	Gasket
9	533 00 08-99	Housing assembly R.H.
10	533 57 75-69	26" Auger Shaft
11	533 00 09-12	5/16-24 x 1-1/2 Bolt
12	533 05 37-37	Ring Quad
13	533 58 31-26	Bearing Impeller Shaft
14	533 00 08-96	Housing R.H.
15	533 05 06-84	Bearing Needle
16	533 00 93-46	Race Thrust
17	533 05 07-95	Key 3/16"
18	533 05 37-32	Worm
19	533 07 13-93	5/16-24 x 1 Bolt
20	533 07 11-00	5/16-24 Flange Locknut
21	533 05 37-31	Bearing Impeller Shaft
22	533 05 37-49	Grease Plug
23	533 07 13-71	3/16" Key
24	533 58 32-14	Impeller Shaft Assembly

E: Remote Chute Assembly

Model 826



E: Remote Chute Assembly

Model 826

Ref. No.	Part No.	Description
1	533 00 41-38	Chute Deflector Remote
2	533 00 35-19	Spring
3	533 07 11-47	5/16-18 x 3/4 Hand Head Slotted Bolt
4	873 68 05-00	5/16-18 Locknut
5	533 00 67-11	Plastic Washer
6	533 00 41-37	Chute Extension Remote
7	533 00 41-73	Bracket Cable
8	533 00 31-34	5/16-18 x 1/2 Bolt
9	873 68 05-00	5/16-18 Locknut
10	533 07 10-21	10-24 x 3/8 Bolt
11	533 07 10-55	10-24 Locknut
12	874 78 04-16	1/4-20 x Bolt
13	873 68 04-00	1/4 x 20 Locknut
14	533 00 41-35	Remote Wire Form
15	874 78 05-10	5/16-18 x 5/8 Bolt GR2
16	533 00 40-52	Remote Cable
17	533 07 09-82	5/16-18 x 1/2 Self Tapping Screw
18	533 08 51-22	Remote Lever Bracket
19	533 57 90-41	Remote Lever
20	533 00 40-51	Spring Washer
21	874 78 06-12	3/8-16 x 1-3/4 Bolt
22	533 07 10-72	3/8 Flatwasher
23	874 78 04-16	1/4-20 x 1 Bolt
24	533 30 47-28	Control Knob
25	873 68 06-00	3/8-16 Lock Nut
26	810 04 05-00	5/16 Lockwasher
27	873 22 05-00	5/16-18 Hex Nut
28	533 07 10-71	5/16 Washer

HCDPL N'INRFR 582G

PART NUMBER	SQUARE	NOTE	PART NUMBER	SQUARE	NOTE	PART NUMBER	SQUARE	NOTE	PART NUMBER	SQUARE	NOTE
533 00 01-04	A		533 06 38-30	C		533 57 39-32	C		874 78 04-16	L	
533 00 01-48	A		533 07 09-69	B		533 57 39-37	C		874 78 04-40	C	
533 00 02-39	C		533 07 09-78	C		533 57 39-41	C		874 78 05-10	BCE	
533 00 05-19	C		533 07 09-82	ACE		533 57 39-44	C		874 78 05-12	AUC	
533 00 05-90	C		533 07 10-21	L		533 58 07-73	C		874 78 05-24	C	
533 00 08-95	C		533 07 10-31	R		533 58 07-81	BC		874 78 05-28	A	
533 00 08-96	D		533 07 10-37	R		533 58 08-89	C		874 78 06-17	F	
533 00 08-97	D		533 07 10-42	A		533 58 09-44	C		874 78 06-20	C	
533 00 08-98	D		533 07 10-45	A		533 58 09-45	B		874 78 06-28	A	
533 00 08-99	D		533 07 10-55	E		533 58 09-61	C		874 78 06-48	A	
533 00 09-12	D		533 07 10-57	B		533 58 09-65	C		876 02 03-12	A	
533 00 14-19	B		533 07 10-63	C		533 58 09-69	C		876 02 04-16	C	
533 00 26-37	C		533 07 10-67	C		533 58 09-70	C				
533 00 32-34	CE		533 07 10-71	BCE		533 58 12-54	C				
533 00 35-19	F		533 07 10-72	ACE		533 58 15-40	B				
533 00 35-35	AC		533 07 10-74	B		533 58 15-75	A				
533 00 35-36	A		533 07 11-00	D		533 58 17-03	C				
533 00 39-43	B		533 07 11-47	E		533 58 17-30	C				
533 00 39-49	C		533 07 13-71	BD		533 58 17-73	C				
533 00 40-51	F		533 07 13-93	D		533 58 17-94	C				
533 00 40-52	L		533 07 14-57	A		533 58 20-60	B				
533 00 41-35	F		533 07 16-64	C		533 58 30-07	C				
533 00 41-37	E		533 07 17-55	B		533 58 30-13	C				
533 00 41-38	E		533 07 17-95	C		533 58 30-16	C				
533 00 41-73	E		533 07 18-01	BC		533 58 30-17	C				
533 00 51-13	A		533 07 18-11	C		533 58 30-31	C				
533 00 54-15	A		533 07 18-17	C		533 58 11-26	D				
533 00 52-51	R		533 07 18-17	C		533 58 31-27	D				
533 00 55-43	A		533 07 18-39	C		533 58 31-56	C				
533 00 61-04	C		533 07 18-42	C		533 58 31-61	B				
533 00 65-36	A		533 07 19-05	D		533 58 32 14	D				
533 00 67-11	E		533 08 50-31	A		533 58 34-70	C				
533 00 67-65	A		533 08 51-13	B		533 58 44-34	A				
533 00 69-15	B		533 08 51-22	AE		533 58 45-63	A				
533 00 69-16	B		533 08 51-52	A		533 58 45-93	A				
533 00 70-30	B		533 08 55-21	C		533 58 45-35	C				
533 00 70-52	A		533 00 47-28	E		533 58 45-72	AC				
533 00 70-55	A		533 30 57-40	A		533 58 46-73	C				
533 00 70-59	A		533 30 57-43	A		533 58 47-23	C				
533 00 72-89	A		533 30 73-99	A		533 58 47 25	C				
533 00 84-17	C		533 30 81-45	A		533 58 47-47	A				
533 00 93-46	D		533 30 93-12	A		533 58 47-48	AC				
533 00 95-24	B		533 30 93-44	A		533 58 47-50	C				
533 00 97-29	A		533 11 42-39	C		533 58 47-96	C				
533 00 97-37	A		533 57 70-15	C		533 58 47-99	C				
533 01 01-04	B		533 57 75 57	R		533 58 56-44	U				
533 01 06-84	A		533 57 75-69	D		533 58 56-45	B				
533 01 14-97	R		533 57 81-59	A		533 58 56-46	R				
533 05 06-77	C		533 57 85-72	C		533 60 56-48	A				
533 05 06-84	D		533 57 87-33	C		533 58 56-49	A				
533 05 07-90	A		533 57 88-87	C		533 07 30-30	B				
533 05 07-86	A		533 57 89-62	C		734 11 62-71	A				
533 05 07-52	A		533 57 90-41	F		810 04 04-00	C				
533 05 07-53	C		533 57 92-65	A		810 04 05-00	ABCE				
533 05 07-95	D		533 57 92-65	A		810 04 06-00	A				
533 05 12-37	B		533 57 97-69	A		810 04 08-00	A				
533 05 12 38	B		533 57 98-60	C		877 11 05-06	R				
533 05 37-03	C		533 57 98-54	C		877 14 04-25	C				
533 05 37-04	C		533 57 98-55	C		872 14 06-06	A				
533 05 37-14	C		533 57 98-56	C		873 22 04-00	C				
533 05 37-30	D		533 57 98 58	C		873 22 06-00	CE				
533 05 37-31	D		533 57 98-59	C		073 22 06-00	A				
533 05 37-32	D		533 57 98-60	C		073 27 10 00	AC				
533 05 37-37	D		533 57 98-61	C		073 68 04-02	BCE				
533 05 37-43	D		533 57 98-63	C		873 68 05-02	ABCE				
533 05 37-44	U		533 57 98-65	C		873 68 06-00	ACE				
533 05 37-48	U		533 57 98-67	C		874 51 05-16	C				
533 05 37-49	D		533 57 98-72	C		874 76 04-28	C				
533 05 37-57	B		533 57 98-74	C		874 78 01-10	C				
533 05 38-16	C		533 57 98-98	C		874 78 04-10	C				

