

LT 4140 G



1.1994

Spare parts

Ersatzteile

Pièces détachées

Reserve onderdelen

Repuestos

Reservdelar

Replaces

Ersetzt

Remplace

Vervangt

Reemplaca

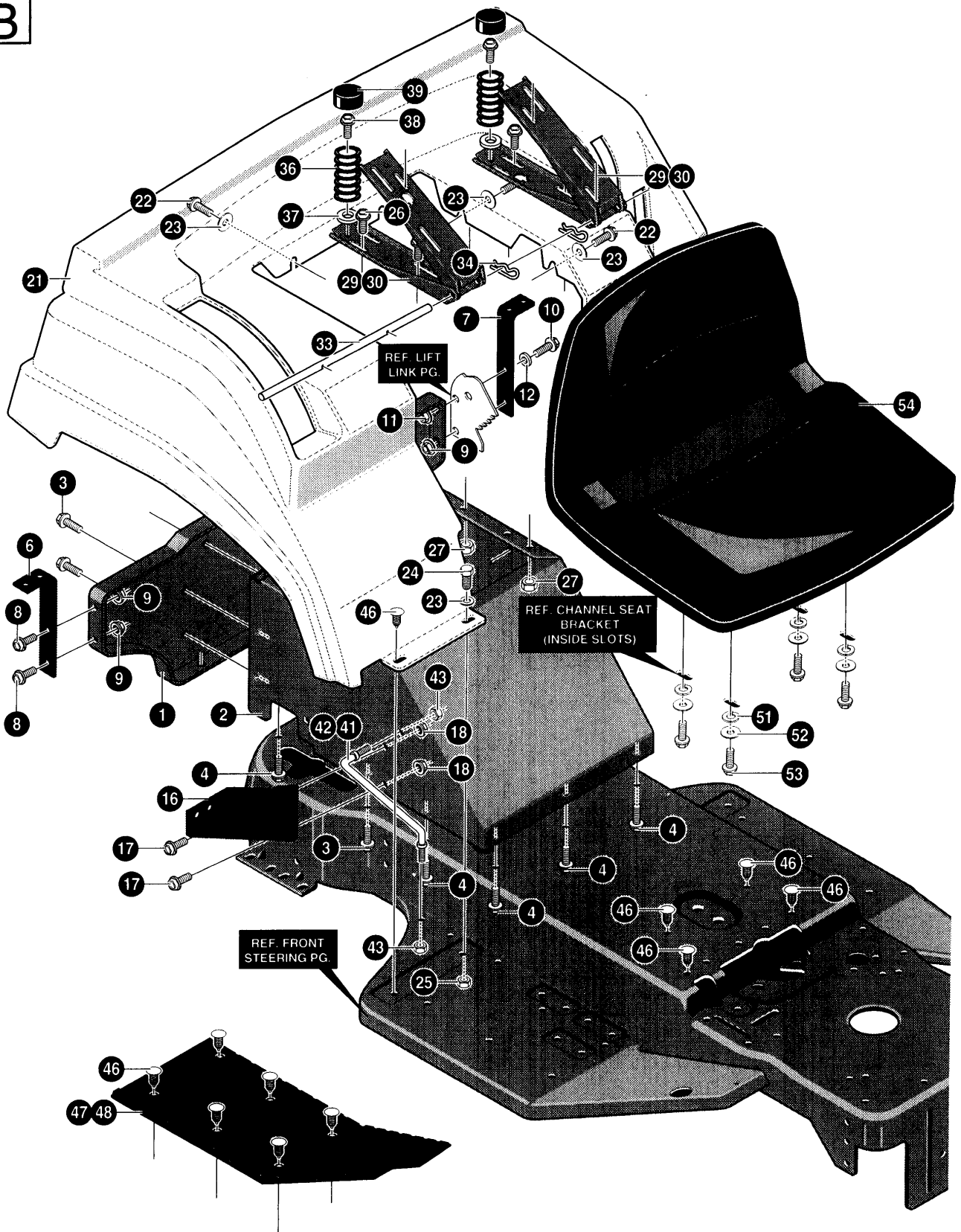
Ersätter

106 23 05-63



KEY#	PART #	DESCRIPTION	QTY.
1	533 30 23-07	SHAFT, STEKRING EURO LT SMORT.....	1
2	533 30 25-24	PIN DOWEL STR ERO LT.....	1
3	533 30 23-14	PINJON, STEKRING.....	1
4	533 32 37-31	SCREW, 5/16-24X.75 (TQ 30-35 FT#)	2
5	533 07 11-00	NUT, 5/16-24 HEXWDFLLK.....	2
6	533 30 24-98	BEARING, SFAL .5001DX . ODX .75.....	1
7	533 00 29-68	WASHER, FLAT .504X .75X.059.....	1
8	533 02 08-64	RING, RET E .39X.04TRU513350	1
9	533 30 32-28	BUSHING STR SHFT UPPER.....	1
12	533 32 18-10	BUMPER,HOOD/DASH EURO TOP.....	2
13	533 33 13-79	DASH,TALL.....	1
14	874 78 04-14	SCREW, 1/4-20X .75 HHC	2
15	533 00 15-02	NUT, 1/4-20 REGHEXCTRLK.....	2
16	533 12 03-92	WASHER, FLAT .281 X .63X.065.....	2
19	533 30 23-31	DASH, LOWER.....	1
20	533 03 54-97	SCREW, 5/16-18X .50 WAHHTAP.....	8
21	533 04 52-63	SCREW, 5/16-18X .37 WAHHTAP.....	2
23	533 99 53-46	SCREW, 1/4-20X .50 WAHHTAP.....	2
24	533 30 58-50	SCREW, 1/4-20X.50PHPNTAP	4
26	533 30 88-98	BRACKET, HOOD RH.....	1
27	533 30 88-97	BRACKET, HOOD LH	1
28	533 00 14-98	NUT, 5/16-18 REGHEXCTRLK	2
29	533 02 50-86	BOLT, .500X .375 HSH 5/1618	2
33	533 33 21-33	HOOD, UPPER.....	1
34	533 05 21-51	EDGING,WIDE BLK	78"
41	533 30 68-58	LENS, SMOKED GREY	1
43	533 30 03-02	SCREW, #10 X .50 HHTAPPST	4
45	533 33 11-84	GRILLE	1
46	533 31 83-04	SCREW, 1/4-14X.75PHPNHDTAP.....	3
50	533 30 58-20	ASSY GAS TANK 1.5 GAL.....	1
58	533 30 03-03	SCREW, .25X.75X.51HHWAPLASTITE.....	6
60	533 01 25-01	CAP,FUEL 2.5" THROAT.....	1
62	533 32 47-95	HEAT SHIELD ERO 1.5 & 3 GAL.....	1
76	533 33 08-47	STEKRING WHEEL	1
77	533 45 63-78	PIN, SPRING.250DIA X 2.00LG HVPL.....	1

B



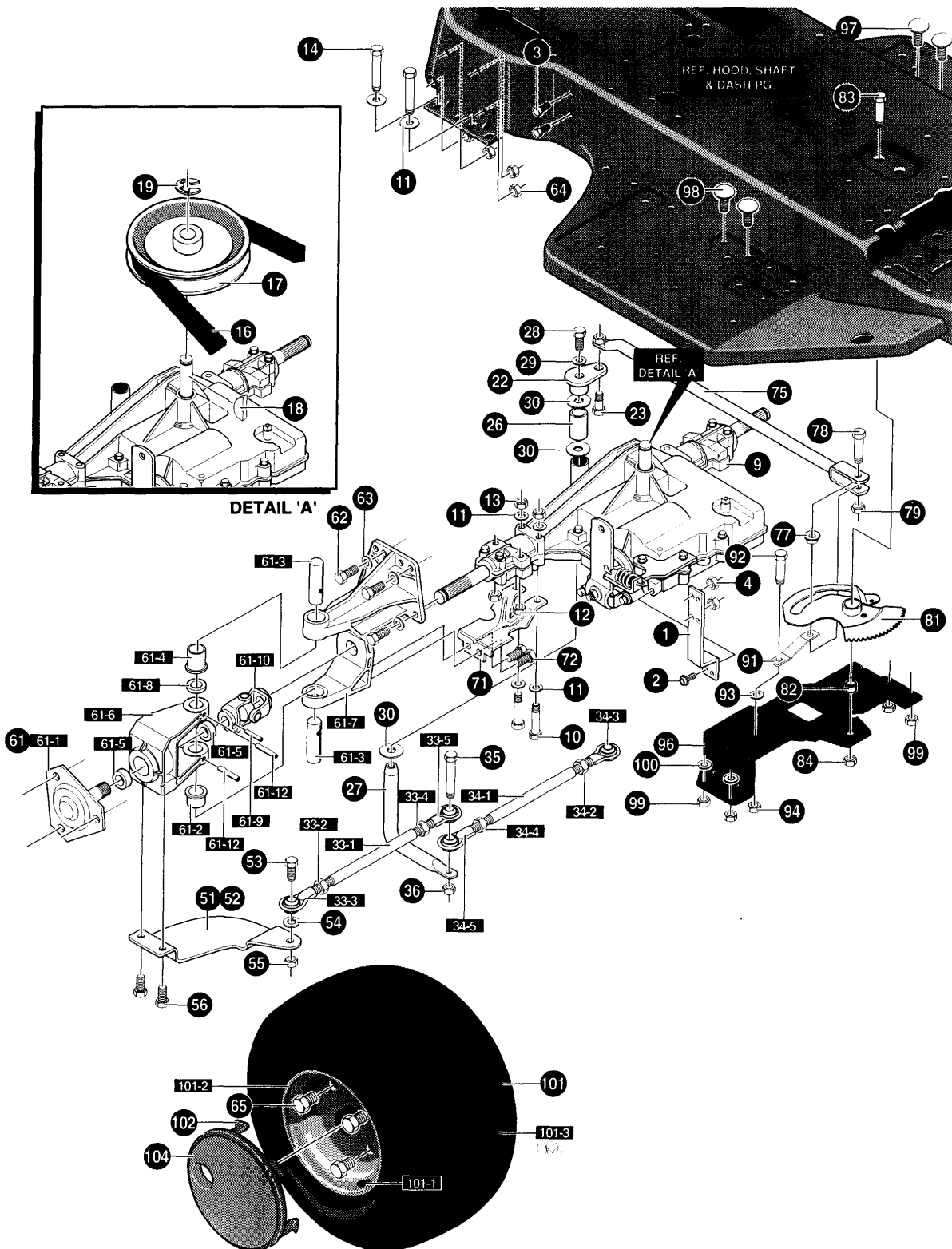


KEY#	PART#	DESCRIPTION	QTY.
1	533 32 20-68	SKAT SUPPORT ELECTRIC LIFT.....	1
2	533 32 20-69	SUPT,FENDER&SEAT ELECT/LIFT	1
3	533 03 54-98	SCREW, 5/16-18X .75 WAHHTAP.....	5
4	533 03 54-97	SCREW, 5/16-18X .50 WAHHTAP.....	10
6	533 30 63-99	SUPPORT FENDER RIGHT	1
7	533 32 78-31	SUPPORT FENDER LEFT	1
8	533 05 60-30	SCREW, 5/16-18X.75WDFLLK	3
9	533 05 52-73	NUT, 5/16-18 HXWDFLLK	3
10	874 78 04-14	SCREW, 1/4-20X .75 HHC	1
11	533 05 13-35	NUT, 1/4-20 WDFLWHIZ-LK.....	1
12	533 12 03-85	WASHER, FLAT .250X .56X.049.....	1
16	533 30 53-81	SUPPORT, SHIFT PLATE	1
17	533 05 60-30	SCREW, 5/16-18X.75WDFLLK	2
18	533 05 52-73	NUT, 5/16-18 HXWDFLLK	2
21	533 31 05-76	FENDER,EURO F-10 GT MOLD GREY.....	1
22	533 04 48-11	SCREW, 1/4-20X .75 WAHHTAP	6
23	734 11 52-01	WASHER, FLAT .281X1.00X.063PL.....	8
24	874 78 04-14	SCREW, 1/4-20X .75 HHC	2
25	533 00 15-02	NUT, 1/4-20 REGHEXCTRLK.....	2
26	533 05 60-30	SCREW, 5/16-18 HXWDFLLK	4
27	533 00 14-98	NUT 5/16-18 REGHEXCTRLK.....	4
29	533 30 28-97	CHANNEL SKAT RH.....	2
30	533 30 54-24	CHANNEL SKAT LH	2
33	533 30 44-81	ROD, SKAT SUPPORT BRZN.....	1
34	533 03 63-68	PIN, HAIR .072 DIA X1.13LG.....	2
36	533 30 55-20	SPRING, SKAT 1.500DX2.25LG	2
37	533 12 03-93	WASHER, FLAT .344X .69X.065.....	2
38	533 03 54-98	SCREW, 5/16-18X .75 WAHHTAP.....	2
39	533 05 69-07	COVER, SKAT SPRING 1.51DX1.0LG.....	2
41	533 31 93-88	SUPPORT,FOOTREST STIFNR RH ZPL.....	1
42	533 31 93-87	SUPPORT,FOOTREST STIFNR LH ZPL.....	1
43	533 00 14-98	NUT, 5/16-18 REGHEXCTRLK	4
46	533 30 92-35	FASTENEK, RATCHET BLACK	18
47	533 31 48-88	FOOT PAD, ASSYRH ERO W/ADH.....	1
48	533 31 48-89	FOOT PAD, ASSYLH ERO W/ADH.....	1
51	533 12 03-93	WASHER, FLAT .344X .69X.065.....	4
52	533 12 06-38	WASHER, HVSPTLK .328X.60X.09.....	4
53	533 18 00-77	SCREW, 5/16-18X .75 HHC	4
54	533 31 03-84	SKAT, W/SW HOLK	1



KEY#	PART#	DESCRIPTION	QTY
2	533 30 52-80	COVER,SECTOR BOLT PLAS GREY.....	1
6	533 30 23-21	BRACKET, FRONT AXLE SUPPORT.....	1
7	533 05 60-30	SCREW, 5/16-18X.75WDFLLK	2
8	533 05 52-73	NUT, 5/16-18 HXWDFLLK	6
9	533 05 36-52	SCREW, 5/16-1 8X.75 HXWDFL	4
10	533 30 71-12	PLUG,FRONT AXLE 1.938DIAX.062".....	2
12	^	SUB-ASSY FR AX ERO LT SMORT	1
12-5	533 31 06-70	AXLE,ASSY FRONT WELD BLK.....	1
12-10	533 18 00-77	SCREW, 5/16-1 8X .75 HHC	4
12-15	533 00 14-98	NUT, 5/16-18 REGHEXCTRLK	4
12-20	533 30 53-40	ASSY SPDLE RHEROLT	1
12-21	533 99 64-16	WASHER, FLAT .391X1.00X.125.....	2
12-22	533 03 66-25	RING, RETEX .57X.05TRU513375.....	1
12-25	533 30 53-39	ASSY SPDLE LH EROLT	1
12-26	533 31 70-19	ARM STEKRING UPPER BLACK	1
12-27	533 18 01-34	SCREW, 3/8-1 6X2.50 HHC	1
12-28	533 00 14-99	NUT, 3/8-16 REGHXCTRLK	1
13	874 78 06-48	SCREW, 3/8-16X3.00 HHC	2
14	533 00 24-83	WASHER,.391DX1.25DX.07 BELLVIL.....	2
15	533 00 14-99	NUT, 3/8-16 REGHXCTRLK.....	2
17	533 00 07-06	ZERK, GREASE FITTING.....	4
18	533 00 06-42	WASHER, FLAT .755X1.31 X075	4
19	533 03 66-25	RING, RETEX .57X.05TRU513375	2
23	533 30 03-28	TIE ROD .625DIA GRND ENGAGER.....	1
24	533 12 03-69	NUT, 3/8-24 REGHEX.....	2
25	533 12 03-82	WASHER, REGSPTLK.393X.68X. 10.....	2
26	533 30 29-08	LINK, ASSY .625DIA DRAG LT 4WS.....	1
26-1	533 05 71-58	BALL JOINT 3/8 THD SMORT STUD.....	2
26-2	533 12 49-25	NUT, 3/8-24 REGHEXJAM.....	2
26-3	533 30 29-07	LINK, .625DIA DRAG LT 4WS.....	1
27	533 12 03-82	WASHER, REGSPTLK.393X.68X.10.....	2
28	533 12 49-25	NUT, 3/8-24 REGHEXJAM	2
41	^	TIRE & RIM, PU 15X6.0X6 WHI.....	2
41-1	533 02 41-67	VALVE STEM	
41-2	533 32 15-16	RIM, WHEEL	
41-3	533 31 44-16	BEARING, FL	
41-4	533 30 65-69	TIRE 15X6.00X6	
44	533 30 11-40	HUB CAP, 6" EURO	2
45	533 30 66-69	CLIP,HUBCAP TINN #C25467017-4	8

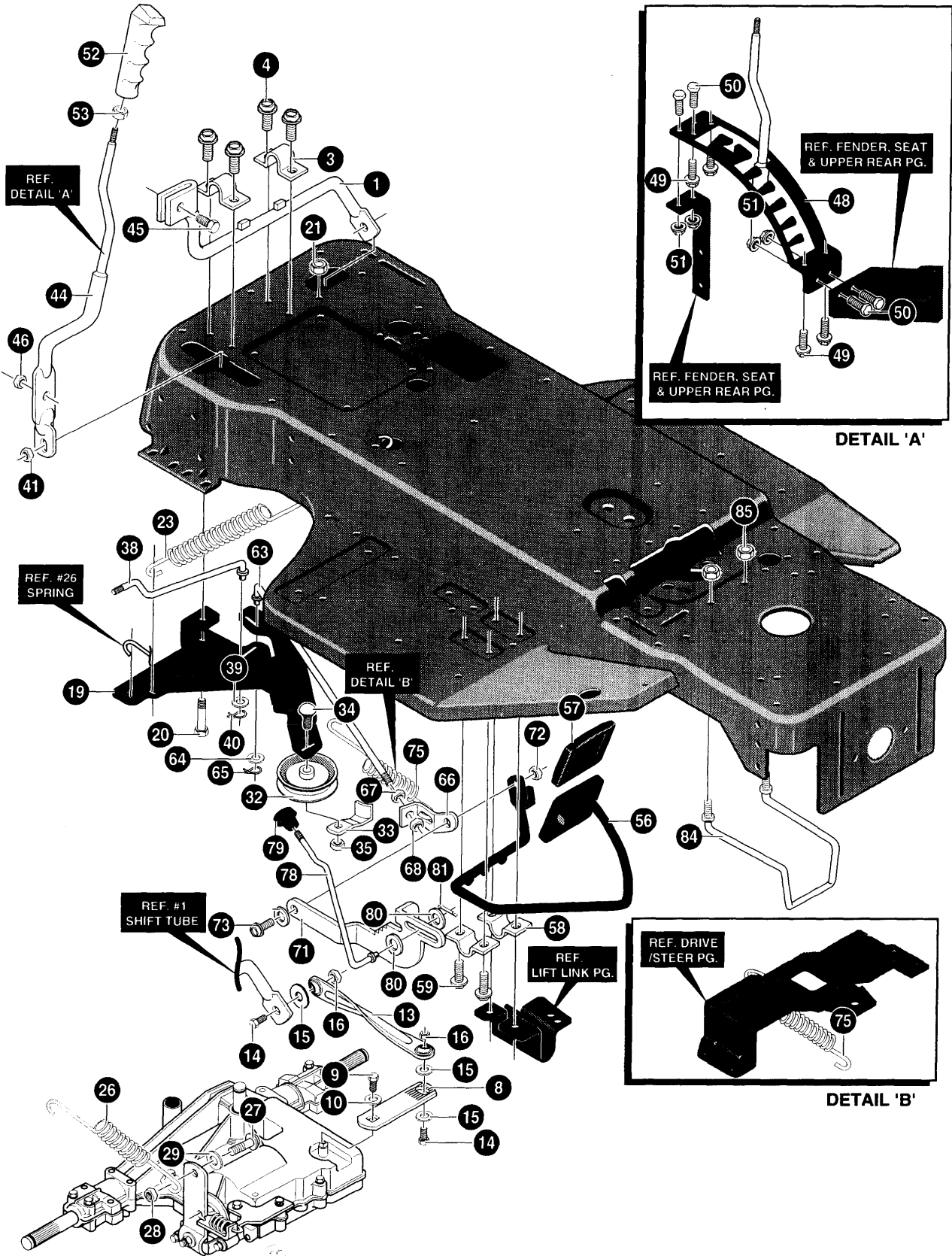
D





KEY #	PART #	DESCRIPTION	QTY
1	533 32 13-82	BRACKET STABILIZER EURO	1
2	533 03 54-98	SCREW, 5/16-18X .75 WAHHTAP	1
3	533 18 00-77	SCREW 5/16-18X .75 HHC	2
4	533 00 14-98	NUT, 5/16-18 REGHEXCTRLK	2
9		TRANSAXLE, 6SP4WSP930-036	1
10	874 78 05-44	SCREW, 5/16-18X2.50 HHC	4
11	533 12 03-93	WASHER, FLAT .344X .69X.065	12
12	533 04 41-08	NUT, 5/16-18 HWDFLCTRLK	4
13	533 00 14-98	NUT, 5/16-18 REGHEXCTRLK	4
14	874 78 05-44	SCREW, 5/16-18X2.50 HHC	4
16	533 30 32-41	BELT, V 4L 90.00 LG	1
17	533 30 31-09	PULLEY, 6.6 OD V4L T/A	1
18	533 05 07-95	KEY, HI-PRO 606 .75DIAX.187WD	1
19	533 02 20-53	RING, RETEX .58X.035TRU510062	1
22	533 30 87-19	PIVOT, STEKRING	1
23	533 01 23-19	BOLT, .562X .340 HSH 3/824	1
26	533 30 41-15	SPACER, STEKRING SHAFT	1
27	533 30 87-20	SHAFT, STEKRING PIVOT (ZN)	1
28	533 42 10-51	SCREW 5/16-24X1.00 HHC	1
29	533 04 56-02	WASHER, FLAT .333X.87X.119	1
30	533 02 51-77	WASHER, FLAT .765X1.19X.048	3
33-1	533 30 84-47	ROD, TIE 1/2"D X 8.12LG	1
33-2	533 30 83-99	NUT, 3/8-24 LH THD REGHJAM	1
33-3	533 30 83-84	BALL JOINT LH 3/8-24	1
33-4	533 12 49-25	NUT, 3/8-24 REGHEXJAM	1
33-5	533 30 42-60	BALL JOINT,RH 3/8-24	1
34-1	533 30 84-46	ROD, TIE 1/2"D X 9.75LG	1
34-2	533 30 83-99	NUT, 3/8-24 LH THD REGHJAM	1
34-3	533 30 83-84	BALL JOINT LH 3/8-24	1
34-4	533 12 49-25	NUT, 3/8-24 REGHEXJAM	1
34-5	533 30 42-60	BALL JOINT,RH 3/8-24	1
35	533 18 16-46	SCREW, 3/8-24X1.75 HHC	1
36	533 41 23-49	NUT, 3/8-24 HXCTRLK	1
51	533 30 41-20	ARM REAR WHL STR (FER) R.H	1
52	533 30 41-21	ARM, REAR WHEEL STEER L.H	1
53	874 61 06-24	SCREW, 3/8-24X1.25 HHC	2
54	533 12 03-82	WASH ER, REGSPTLK.393X.68X.10	2
55	533 41 23-49	NUT, 3/8-24 HXCTRLK	2
56	874 78 06-16	SCREW, 3/8-16X1.00 WAHHTAP	4
61	533 32 37-43	U-JOINT, ASSY 4-WS LT DUTY	2
61-1	533 01 22-80	HUB ASSEMBLY	1
61-2	533 32 45-78	BEARING, FLSH .7521DX .9370DX.75	1
61-3	533 01 22-89	PIN, STEKRING HINGE	2
61-4	533 32 45-78	BEARING, FLSH . IDX . ODX	1
61-5	533 01 23-25	BEARING, BALL 6203-2AA-3/4	2
61-6	533 01 24-65	BRACKET,STEERING PIVOT	1
61-7	533 01 24-66	BRACKET,STR PIVOT	1
61-8	533 02 16-82	WASHER, FLAT .765X1.25X.042PL	1
61-9	533 03 63-11	PIN, GRODVED .250 DIA X1.50LG	1
61-10	533 32 05-31	U-JOINT ASSEMBLY W/ZERK (LONG)	1
61-12	533 45 67-22	PIN, SPRING.250DIA X1.50LG HVPL	2
62	533 18 00-79	SCREW, 5/16-18X1.00 HHC	8
63	533 12 03-93	WASHER, FLAT .344X .69X.065	8
64	533 00 14-98	NUT, 5/16-18 REGHEXCTRLK	8
65	533 18 16-83	SCREW, 1/2-20X .50 HHC	6
71	533 30 32-22	BACRKET X-AXLE MTG 4WS	2
72	533 03 54-98	SCREW, 5/16-18X .75 WAHHTAP	4
75	533 30 25-93	ROD R WHL STR 4WS(930-6)	1
77	533 30 41-16	CAM YOKE ROLLER	1
78	533 30 41-22	BOLT, .625 X1.175HH\$H	1
79	533 27 46-54	NUT, 1/2-20 REGHXC-LK	1
81	533 30 28-77	ASSY SECTOR GEAR 4WS	1
82	533 30 28-78	BEARING SLEV . IDX . ODX	1
83	533 18 17-09	SCREW, 1/2-20X2.50 HHC	1
84	533 27 46-54	NUT, 1/2-20 REGHXCTRLK	1
91	533 30 25-94	FOLLOWER,ROLLER	1
92	533 30 25-88	BOLT, .265X .800 HSH 3/824	1
93	533 44 63-63	WASHER, FLAT .375X .88X.082	1
94	533 41 23-49	NUT, 3/8-24 HXCTRLK	1
96	533 30 25-83	PLATE, PIVOT STEKRING EURO	1
97	533 03 54-97	SCREW, 5/16-18X .50 WAHHTAP	2
98	533 03 54-98	SCREW, 5/16-18X .75 WAHHTAP	2
99	533 00 14-98	NUT, 5/16-18 REGHEXCTRLK	4
100	533 44 63-63	WASHER, FLAT .375X .88X.082	2
101	533 30 42-59	TIRE & RIM,20X10.00-8 TURF 661	2
	533 02 41-67	VALVE STEM	2
	533 01 24-67	RIM, WHEEL	2
102	533 30 66-69	CLIP,HUBCAP TINN #C25467-017-4	10
104	533 30 65-70	HUB CAP, 8" EURO	2

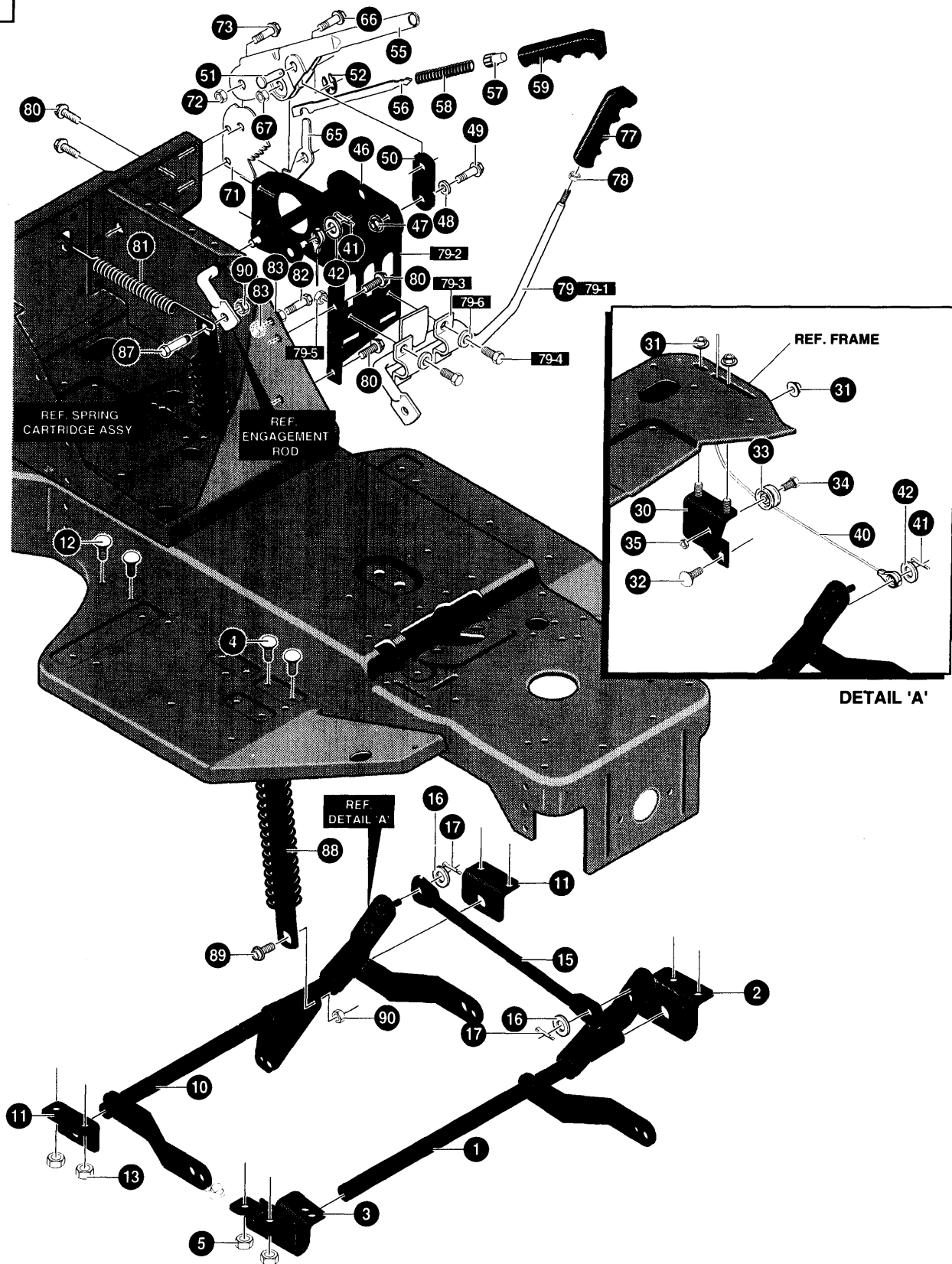
E





KEY#	PART#	DESCRIPTION	QTY
1	533 32 14-21	TUBE ASSY, SHIFT BLACK 173.....	1
3	533 30 25-38	CLIP, SHIFT LEVER	2
4	533 03 54-97	SCREW, 5/16-18X .50 WAHHTAP	4
8	533 30 25-82	LEVER,TRANS SHIFT	1
9	533 05 62-55	SCREW, 1/4-28X .75 NYLHHC	1
10	533 05 71-57	WASHER,.750X.250SP-TRANSAXLE.....	1
13	533 30 95-46	LINK,TIE ROD SHIFT 7.812C/L.....	1
14	874 78 06-20	SCREW, 3/8-16X1.25	2
15	533 12 03-94	WASHER, FLAT .406X .81X.065	2
16	533 00 14-99	NUT, 3/8-16 REGHXCTRLK.....	2
19	533 30 40-49	ARM IDLER	1
20	533 05 11-89	BOLT, .500X1.280 HSH 3/816	1
21	533 00 14-99	NUT, 3/8-16 REGHXCTRLK.....	1
23	533 30 42-09	SPRING, CLUTCH	1
26	533 30 41-30	SPRING,BRAKE 1.000DX3.12X.120.....	1
27	533 02 50-86	BOLT, .500X .375 HSH 5/1618	1
28	533 00 14-98	NUT, 5/16-18 REGHEXCTRLK	1
29	533 30 81-88	WASHER, FLAT .515X1.31 X.09.....	1
32	533 04 02-23	PULLEY, IDLER BFF	1
33	533 30 41-05	BELT RETAINER.....	1
34	533 05 73-25	BOLT, 3/8-16X2.00 CARRSN	1
35	533 04 51-71	NUT, 3/8-16 HWDFL WHIZ-LOCK ZN	1
38	533 30 40-83	ROD, SHIFT-ON-THE-GO	1
39	533 12 03-94	WASHER, FLAT .406X .81X.065	1
40	533 03 63-68	PIN, HAIR .072 DIA X1.13LG	1
41	533 07 10-46	NUT, 3/8-16 HEXNYL.....	1
44	533 30 40-25	TUBE ASSY, SHIFT PIVOT.....	1
45	533 30 40-86	BOLT.375X.400 1/420X.47.....	1
46	533 00 15-02	NUT, 1/4-20 REGHEXCTRLK.....	1
48	533 30 53-82	QUADRANT,SHIFTP930-6SP ERO	1
49	533 30 03-02	SCREW, #10 X .50 HHTAPPST.....	4
50	874 78 04-14	SCREW, 1/4-20X .75	4
51	533 05 13-35	NUT, 1/4-20 WDFLWHIZ-LK	4
52	533 30 47-28	HANDLE, 3/8-16 MOLDED	1
53	533 12 03-77	NUT, 3/8-16 REGHX	1
56	533 30 23-19	WELD ASSY CL/BR ARM.....	1
57	533 30 23-35	PAD,CLUTCH/BRAKE MOLD W/L.....	1
58	533 31 32-71	BRACKET CUBR ARM.....	2
59	533 03 54-97	SCREW, 5/16-18X .50 WAHHTAP	2
63	533 30 42-12	ROD, CLUTCH	1
64	533 12 03-92	WASHER, FLAT .281X .63X.065	1
65	533 12 12-23	PIN, COTTER .062 DIA X .75LG	1
66	533 30 41-25	BRACKET, BRAKE ROD.....	1
67	533 27 11-84	NUT, 5/16-18 HEXKEPS.....	1
68	533 00 14-98	NUT, 5/16-18 REGHEXCTRLK	1
71	533 30 42-08	LEVER, PARK BRAKE.....	1
72	533 00 14-98	NUT, 5/16-18 REGHEXCTRLK	1
73	533 02 50-86	BOLT, .500X .375 HSH 5/1618	1
75	533 03 54-10	SPRING .071 X .62 X 4.37.....	1
78	533 30 42-17	ROD, PARKING BRAKE	1
79	533 30 43-67	KNOB, PARK BRAKE BLK853.....	1
80	533 12 03-85	WASHER, FLAT .250X .56X.049	2
81	533 12 12-23	PIN, COTTER .062 DIA X.75LG.....	1
84	533 31 01-62	GUIDE, BELT 820 TRANSAXLE	1
85	533 00 14-98	NUT, 5/16-18 REGHEXCTRLK	2

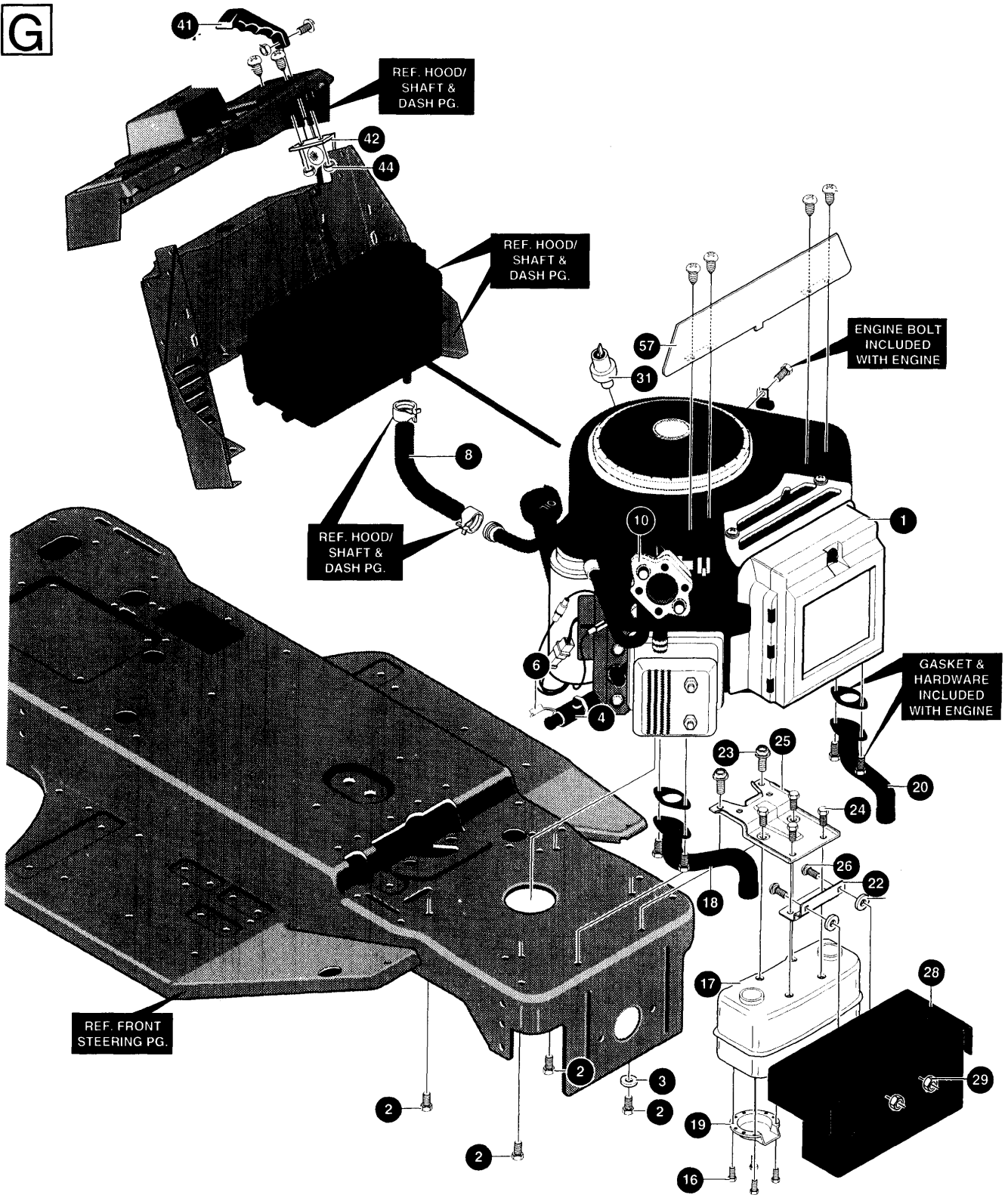
F





KEY #	PART #	DESCRIPTION	QTY
1	533 30 23-79	SHAFT, ASSY FRONT LIFT EURO.....	1
2	533 30 49-67	BRACKET, FRONT HANGER RH.....	1
3	533 30 23-38	BRACKET, FRONT HANGER LH.....	1
4	533 18 00-77	SCREW, 5/16-18X .75 HHC	4
5	533 00 14-98	NUT, 5/16-18 REGHEXCTRLK.....	4
10	533 30 22-06	SHAFT, ASSY REAR LIFT.....	1
11	533 30 23-60	BRACKET, REAR HANGER EURO.....	2
12	533 18 00-77	SCREW, 5/16-18X .75 HHC	4
13	533 00 14-98	NUT, 5/16-18 REGHEXCTRLK.....	4
15	533 30 23-80	ROD, TIE	1
16	533 12 03-94	WASHER, FLAT .406X .81X.065.....	2
17	533 12 12-22	PIN, COTTER .090 DIA X .75LG	2
30	533 30 32-30	ASSY,PULLEY BRKT.....	1
31	533 05 52-73	NUT, 5/16-18 HXWDFLLK.....	3
32	872 11 05-06	BOLT, 5/16-18X .63 CARR	1
33	533 04 83-06	PULLEY,POWDER METAL	1
34	533 30 55-22	BOLT, .375X .700 HSH 5/1618.....	1
35	533 00 14-98	NUT, 5/16-18 REGHEXCTRLK.....	1
40	533 30 32-27	CABLE, DECK LIFT	1
41	533 12 12-22	PIN, COTTER .090 DIA X .75LG	2
42	533 12 03-93	WASHER, FLAT .344X .69X.065.....	2
46	533 30 22-05	ASSY, UPPER SHAFT.....	1
47	533 00 14-98	NUT, 5/16-18 REGHEXCTRLK.....	1
48	533 04 56-02	WASHER, FLAT .333X .87X.119.....	1
49	533 03 61-49	BOLT, .375X .500 HSH 5/1618.....	1
50	533 30 23-57	LINK	1
51	533 30 03-10	PIN,CLEVIS.310DIA+.475LG	1
52	533 30 03-11	RING, RET E .31 X.25TRUX513331	1
55	533 05 83-32	HEIGHT LEVER	1
56	533 05 83-30	ROD, ACTUATOR	1
57	533 05 83-25	KNOB, HEIGHT ADJ PUSH BUTTON.....	1
58	533 05 83-26	SPRING, HEIGHT ADJUST.....	1
59	533 30 47-30	GRIP, HAND .741DX5.15	1
65	533 30 12-39	PAWL, SQUARE	1
66	533 30 01-71	BOLT, .500X .270 HSH 5/1618.....	1
67	533 04 41-08	NUT, 5/16-18 HWDFLCTRLK	1
71	533 30 23-83	QUADRANT	1
72	533 00 14-98	NUT, 5/16-18 REGHEXCTRLK.....	1
73	533 30 01-71	BOLT, .500X .270 HSH 5/1618.....	1
77	533 30 47-29	HANDLE, 1 /2-13	1
78	533 12 02-38	NUT, 1/2-13 HEXJAM	1
79	533 30 73-85	ASSY BRKT & ENGAGE HAND.....	1
79-1	533 30 63-91	ASSY,ENGAGEMENT ROD	1
79-2	533 30 22-08	BRACKET, SUPPORT ENGAGE.....	1
79-3	533 31 27-01	CLIP.....	2
79-4	533 18 00-16	SCREW, 1/4-20X .50 HHC	2
79-5	533 00 15-02	NUT, 1/4-20 REGHEXCTRLK.....	2
79-6	533 12 03-85	WASHER, FLAT .250X .56X.049.....	2
80	533 03 54-97	SCREW, 5/16-18X .50 WAHTAP	4
81	533 30 53-06	SPRING, TENSION.....	1
82	533 18 01-34	SCREW, 3/8-16X2.50 HHC	1
83	533 27 11-90	NUT, 3/8-16 HEXKEPS	2
87	533 30 59-89	BOLT, .437X .43 HSH	1
88	533 30 44-48	ASSY SPRING CARTRIDGE.....	1
89	533 02 05-07	BOLT, .437X .156 HSH 5/1618.....	1
90	533 00 14-98	NUT, 5/16-18 REGHEXCTRLK.....	2

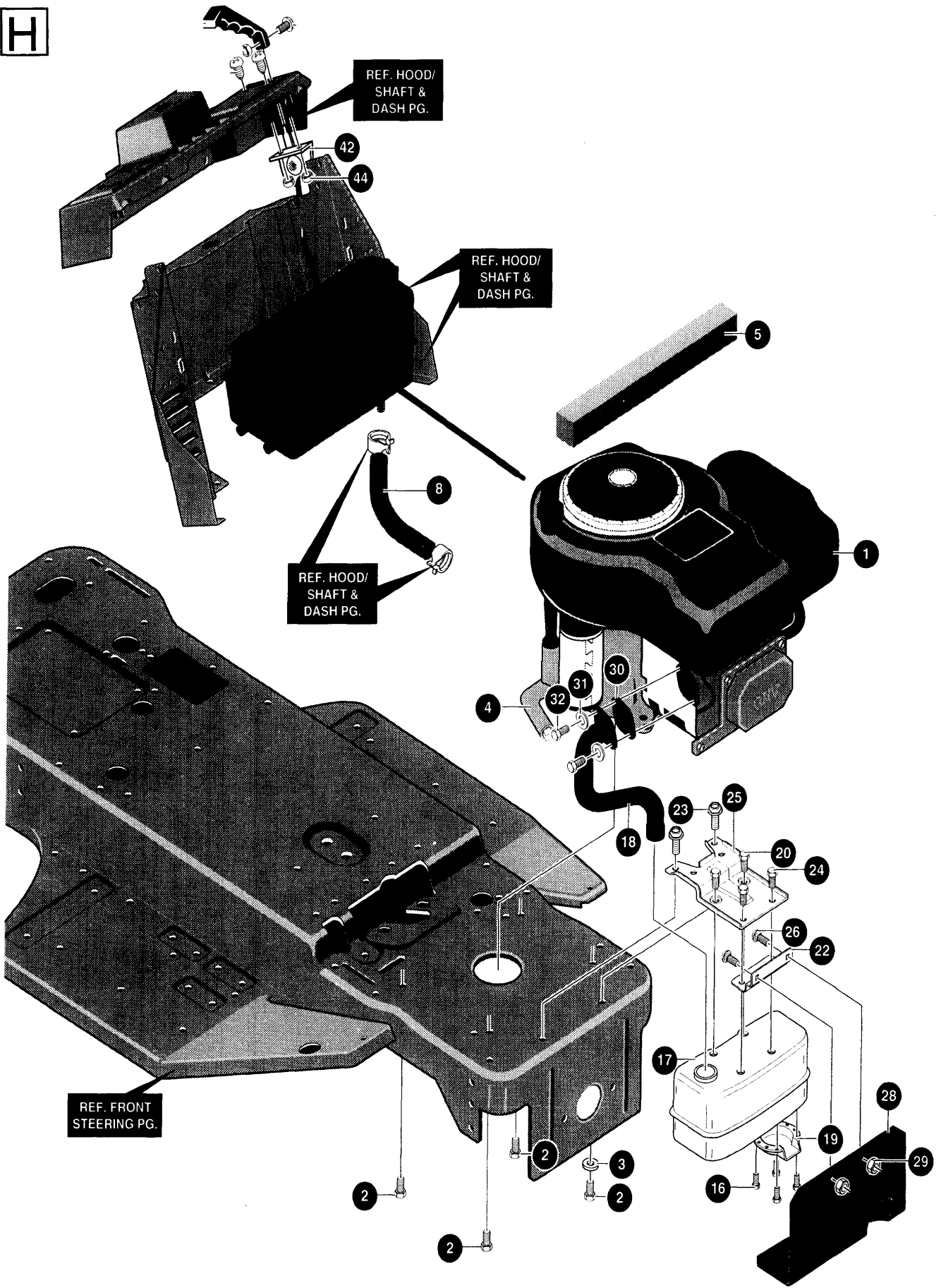
G





KEY #	PART #	DESCRIPTION	QTY.
1	ENGINE	1
2	533 05 09-47	SCREW, 3/8-16X1.25 WAHHTAPBLKP.....	4
3	533 13 84-89	WASHER, EXLK .384X.69X.04	1
4	533 30 71-74	NIPPLE 3/8-18 NPT X 4"	1
6	533 04 78-28	CAP, PIPE 3/8-18	1
8	506 66 42-01	TUBING, .25X.50X BULK GAS LINE.....	10 IN.
10	533 31 55-99	REGULATOR,VOLTAGE W/O SENSOR.....	1
16	533 03 52-87	SCREW, #8-32X .38 HHWATAP	4
17	533 30 55-53	MUFFLER 14/18 TWIN NLSN 22785C	1
18	533 30 55-54	EXHAUST TUBE 15HP RH B&S VANG.....	1
19	533 05 64-72	DEFLECTOR SIDE OUT (B222573)	1
20	533 30 55-55	EXHAUST TUBE 15HP LH B&S VANG.....	1
22	533 00 97-96	BRACKET, TRANSAXLE	1
23	533 03 54-97	SCREW, 5/16-18X .50 WAHHTAP.....	2
24	533 04 48-11	SCREW, 1/4-20X .75 WAHHTAP	4
25	533 30 47-09	BRACKET, MUFFLER.....	1
26	872 11 05-06	BOLT, 5/16-18X .63 CARR	2
28	533 32 09-22	SHIELD, MUFFLER HEAT TWIN	1
29	533 05 52-73	NUT, 5/16-18 HXWDFLLK.....	2
31	533 31 47-97	OIL SENSOR, B&S TWIN CYL.....	1
41	533 30 44-39	KNOB, THROTTLE CONTROL.....	1
42	533 30 73-62	THROTTLE CONTROL.....	1
44	533 30 84-59	NUT, #10-24 HXHDNYLK	2
57	533 32 13-06	HEAT SHIELD V/G	1

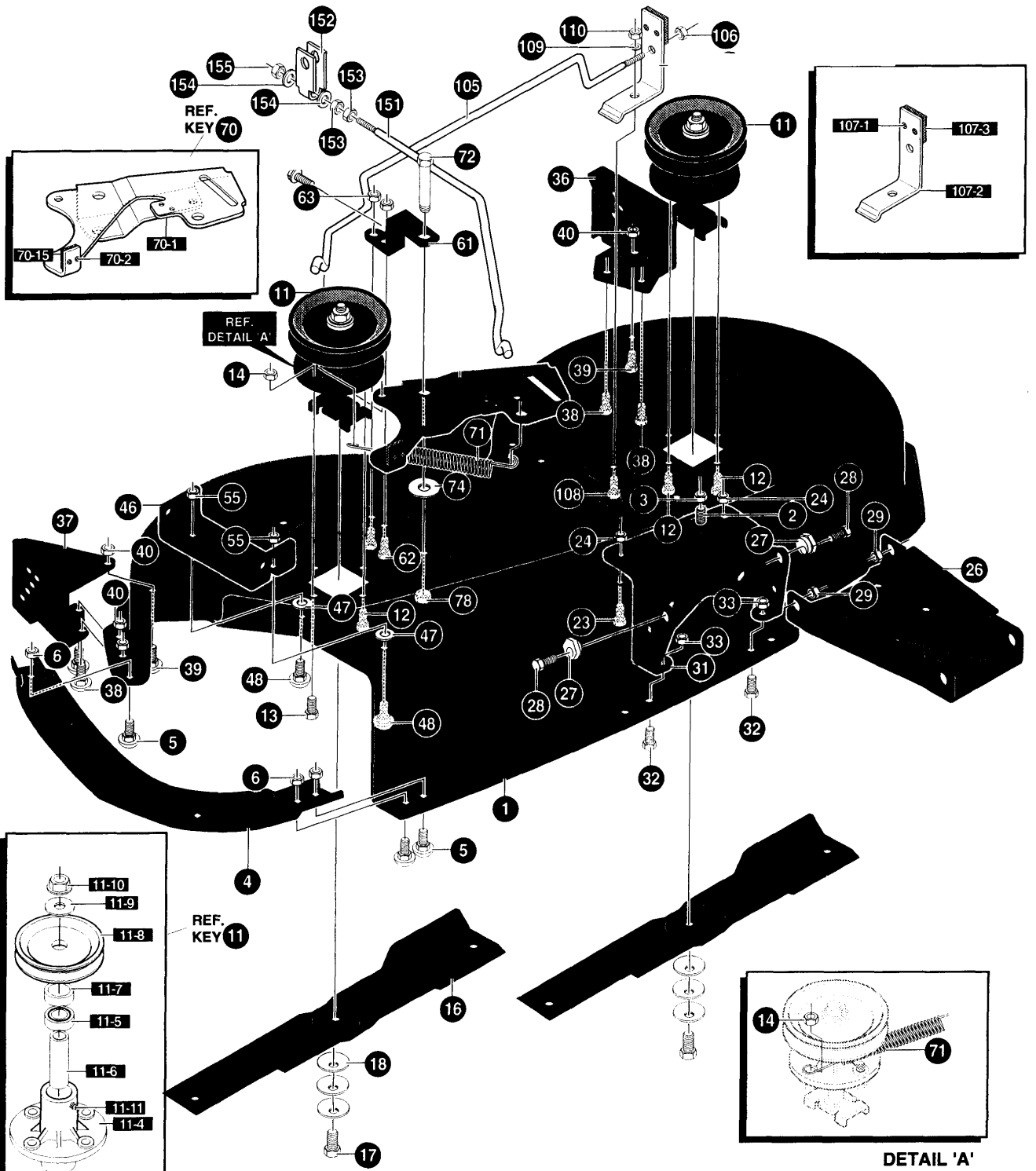
H





KEY#	PART#	DESCRIPTION	QTY
1	ENGINE	1
2	533 05 09-47	SCREW, 3/8-16X1.25 WAHHTAPBLK.....	4
3	533 13 84-89	WASHER, EXLK .384X.69X.04.....	1
4	533 11 13-16	ELBOW,90 DEG STREET3/8.....	1
5	533 30 81-15	FOAM HOOD BAFFLE.....	1
8	506 66 42-01	TUBING, .25X.50X BULK GAS LINE	13.5 In.
16	533 03 52-87	SCREW, #8-32X .38 HHWATAP.....	4
17	533 32 63-24	MUFFLER 12/14 HP LOW BACK FIRE.....	1
18	533 33 24-08	TUBE, MFFLR EXMUST BSOHV SNGL	1
19	533 05 64-72	DEFLECTOR SIDE OUT (BS222573).....	1
20	533 99 53-46	SCREW, 1/4-20X .50 WAHHTAP	2
22	533 00 97-96	BRACKET, TRANSAXLE.....	1
23	533 03 54-97	SCREW, 5/16-18X .50 WAHHTAP	2
24	533 04 48-11	SCREW, 1/4-20X .75 WAHHTAP	2
25	533 30 47-09	BRACKET,MUFFLER.....	1
26	533 05 70-72	BOLT, 5/16-18X .63 CARRLN	2
28	533 33 24-21	HEAT SHIELD, FRONT LF/EURO	1
29	533 05 52-73	NUT, 5/16-18 HXWDFLLK	2
30	533 04 67-08	GASKET, MUFFLER.....	1
31	533 12 06-38	WASHER, HVSP TLK .328X.60X.09.....	2
32	533 18 00-77	SCREW, 5/16-18X .75 HHC	2
41	533 30 44-39	KNOB, THROTTLE CTL MOLD.....	1
42	533 01 57-16	THROTTLE CONTROL 17.0" CHKOMA.....	1
44	533 30 84-59	NUT, #10-24 HXHDNYLK	2

I

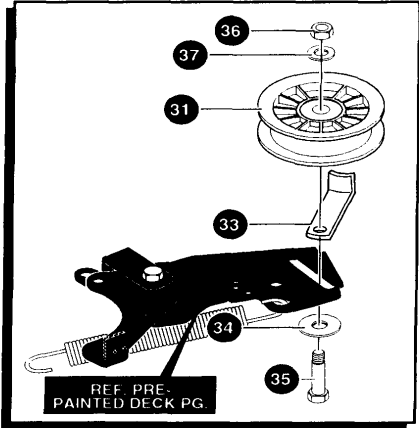


DETAIL 'A'

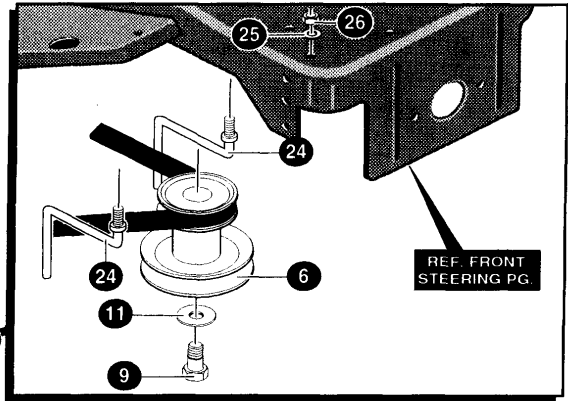


KEY #	PART #	DESCRIPTION	QTY.
1	533 32 51-03	40 DECK KIT	1
2	533 18 00-77	SCREW, 5/16-18X .75 HHC	1
3	533 00 14-98	NUT, 5/16-18 REGHEXCTRLK	1
4	533 32 64-80	TOK GUARD - MULCHER	1
5	872 11 05-06	BOLT, 5/16-1 8X .63 CARR	3
6	533 00 14-98	NUT, 5/16-18 REGHEXCTRLK	3
11	533 31 77-05	QUILL 36/39/40/43 W/ZERKS	2
11-1	533 05 64-25	SHAFT/SADDLE 36"	1
11-2	738 22 03-19	BRNG, BALL 6203-A-C3 (SKAL)	1
11-3	533 05 06-16	DUST SHIELD	1
11-4	533 05 07-02	QUILL HSG. EXP	1
11-5	738 22 03-19	BRNG, BALL 6203-2AA(SEALS)-C3	1
11-6	533 05 08-18	SPACER, SLEV.669X.88X3.797	1
11-7	533 05 14-49	SPACER, SLEV .672X .93X .438PM	1
11-8	533 31 38-98	PULLEY,26/36" QUILL V5L	1
11-9	533 05 63-65	WASHER, SPECIAL QUILL	1
11-10	533 00 12-82	NUT, 7/16-20 WDFLLK	1
11-11	533 00 07-06	ZERK, GREASE FITTING	1
12	533 03 54-98	SCREW, 5/16-18X .75 WAHHTAP	7
13	533 30 03-45	SCREW,5/16-18X1.38WAHHTAP	1
14	533 00 14-98	NUT, 5/16-18 REGHEXCTRLK	1
16	533 31 33-16	BLADE, 40" STD-LIFT 20.32	2
16	533 30 90-70	BLADE, 40" HI-LIFT 20.32	2
17	533 00 95-73	SCREW, 3/8-24X1.00 NYLHHC	2
18	533 00 24-83	WASHER,.391DX1.25DX.07 BELLVIL	6
23	872 11 05-06	BOLT, 5/16-1 8X .63 CARR	2
24	533 00 14-98	NUT, 5/16-18 REGHEXCTRLK	2
26	533 31 08-00	CHANNEL DRAWBAR 40 EURO	1
27	533 05 82-47	NUT, ADJUST	2
28	533 18 00-79	SCREW, 5/16-18X1.00 HHC	2
29	533 00 14-98	NUT, 5/16-18 REGHEXCTRLK	2
31	533 31 23-42	BRACKET FRT	1
32	533 18 00-77	SCREW, 5/16-18X .75 HHC	2
33	533 00 14-98	NUT, 5/16-18 REGHEXCTRLK	2
36	533 31 70-41	BRACKET,GAGE WHEEL L.H	1
37	533 31 70-18	BRACKET, GUAGE WHEEL RH	1
38	533 18 00-77	SCREW, 5/16-18X .75 HHC	4
39	872 11 05-06	BOLT, 5/16-18X .63 CARR	2
40	533 00 14-98	NUT, 5/16-18 REGHEXCTRLK	6
46	533 31 70-17	BRACKET CHUTE MOUNT	1
48	872 11 05-06	BOLT,5/16-18X.63CARR	2
55	533 00 14-98	NUT, 5/16-18 REGHEXCTRLK	2
61	533 32 68-93	BRACE IDLER SUPPORT 40",43"	1
62	533 18 00-77	SCREW, 5/16-18X .75 HHC	2
63	533 04 41-08	NUT, 5/16-18 HWDFLCTRLK	2
70-1	533 32 21-16	ARM IDLER 40/43"DECK	1
70-2	533 04 16-01	RIVET, OVSET .187DIAX .50LG ST	2
70-3	533 30 69-73	BRAKE PAD - HARD - 232AF	1
71	533 03 54-10	SPRING .071 X .62 X 4.37	1
72	533 30 44-20	BOLT,.500X2.15 HSSH	1
74	734 11 78-01	WASHER, FLAT .391 X1.00X.209	1
78	873 22 06-00	NUT, 3/8-16 HWDFLK MACK	1
105	533 30 27-14	ROD, BRAKE	1
106	533 00 15-02	NUT, 1/4-20 REGHEXCTRLK	1
107-1	533 04 16-01	RIVET, TRSET .185DIAX .41 LG ST	2
107-2	533 30 41-18	BRAKE ARM	1
107-3	533 30 69-73	BRAKE PAD - HARD - 232AF	1
108	533 18 00-77	SCREW, 5/16-18X .75 HHC	1
109	533 12 03-93	WASHER, FLAT .344X .69X.065	1
110	533 00 14-98	NUT, 5/16-18 REGHEXCTRLK	1
151	533 30 30-72	ROD, CLUTCH	1
152	533 30 52-84	CLEVIS, EURO	1
153	533 12 03-76	NUT, 5/16-18 REGHEX	2
154	533 12 03-93	WASHER, FLAT .344X .69X.065	2
155	533 00 14-98	NUT, 5/16-18 REGHEXCTRLK	1
156	533 05 74-44	TIE, CABLE BLACK NYLON 5.62L	1

J

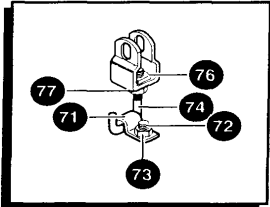


DETAIL 'A'



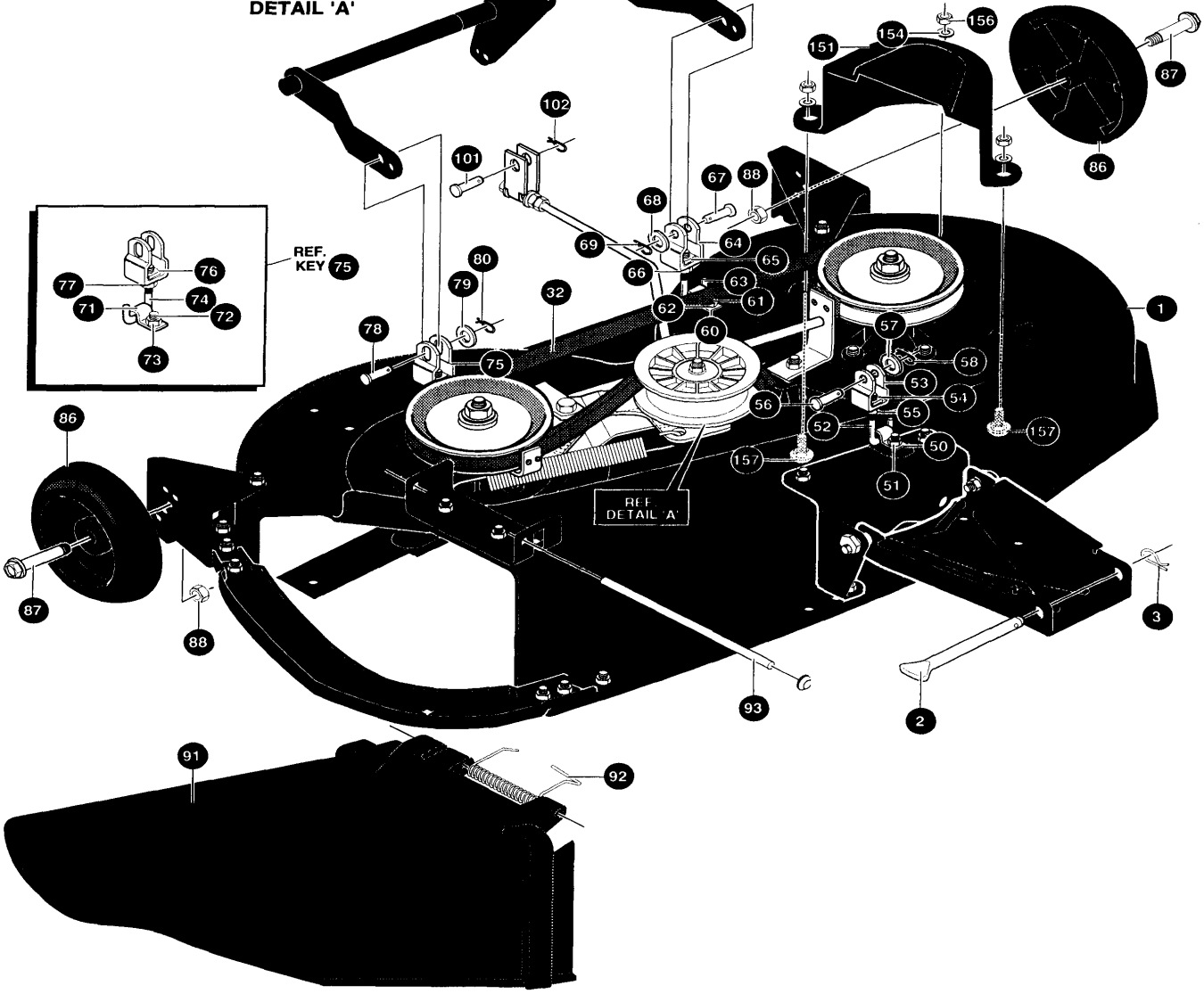
REF. FRONT STEERING PG.

REF. LIFT LINK PG.



REF. KEY 75

REF. DETAIL 'A'

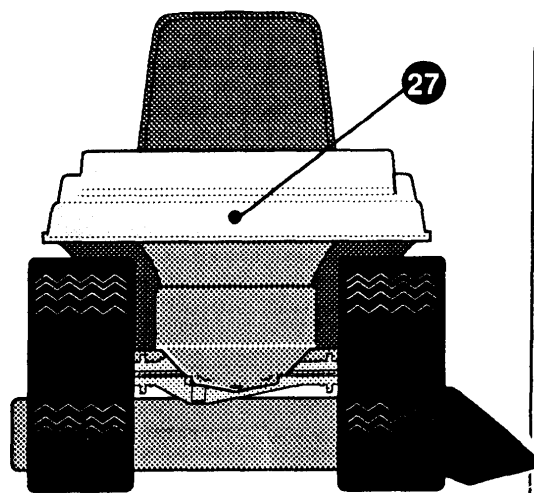
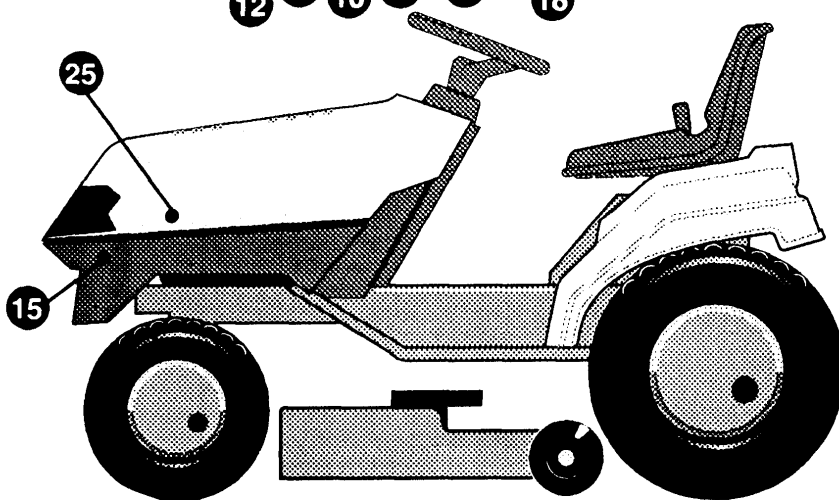
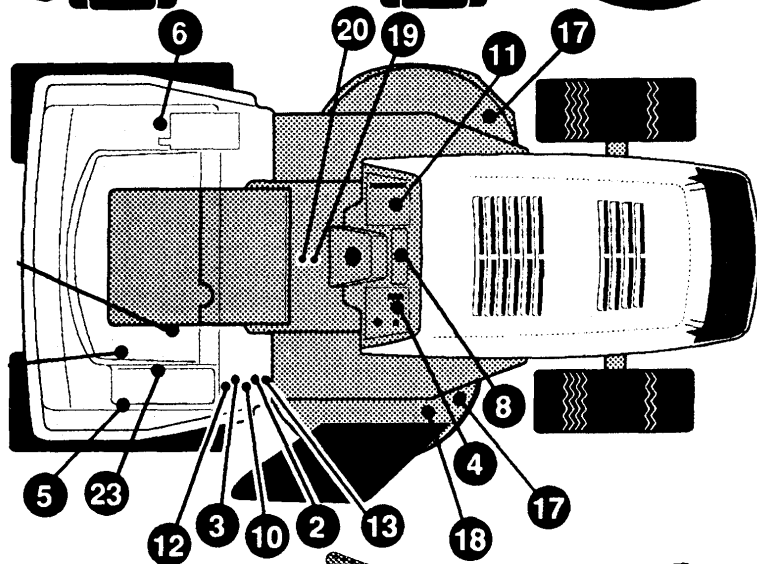
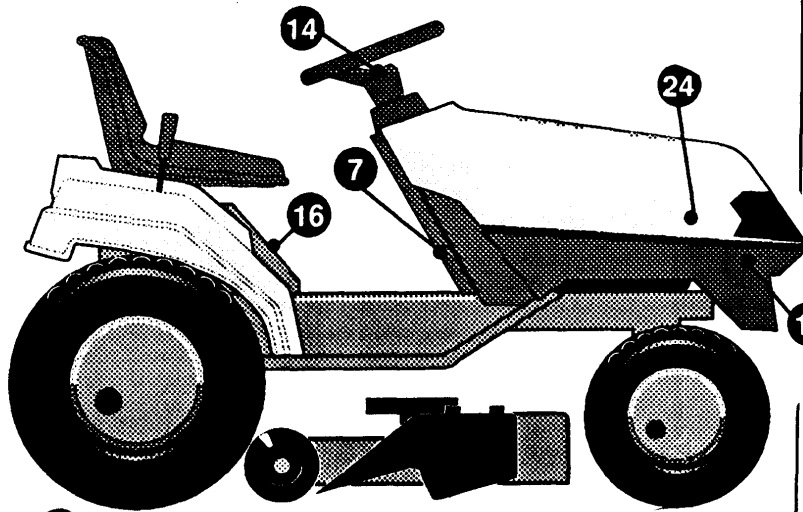
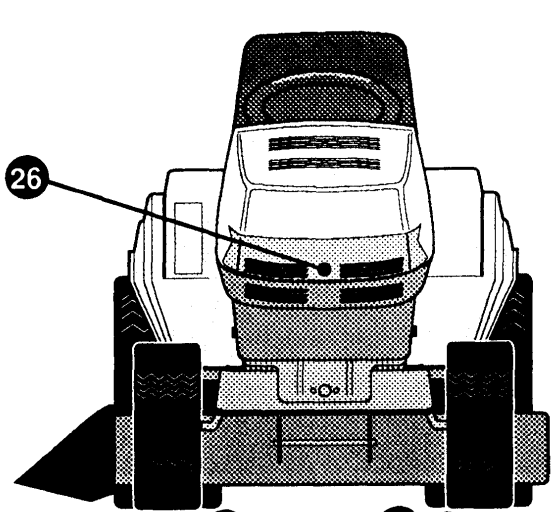


KEY #	PART #	DESCRIPTION	QTY.
1		MOWER DECK 40"	1
2	533 30 29-63	ROD.DRAWBAR	1
3	533 05 61-80	PIN, HAIR .091 DIAX1.62LG	1
6	533 32 76-15	PULLEY,ENG, LT 4140 G.....	1
6	533 32 80-26	PULLEY,ENG, LT 4130 G.....	1
9	533 32 76-16	SCREW, ENGINE PULLEY, 4140 G.....	1
9	533 42 86-44	SCREW, ENGINE PULLEY, 4130 G.....	1
11	533 12 03-83	WASHER,REGSPTLK.459X.78X.12.....	1
24	533 30 04-40	GUIDE, BELT, RIDER	2
25	533 13 85-38	WASHER, REGINTLK.320X.61 X.03.....	2
26	533 00 14-98	NUT, 5/16-18 REGHEXCTRLK	2
31	533 31 03-26	PULLEY, IDLER BFF 4.00 WIDE FL.....	1
32	533 04 80-44	BELT, V 5L 82.00 DECK DR.....	1
33	533 00 13-46	RETAINER, BELT	1
34	533 44 63-63	WASHER, FLAT .375X .88X.082	1
35	533 05 73-25	BOLT, 3/8-16X2.00 CARR	1
36	533 12 03-77	NUT, 3/8-16 REGHeX	1
37	533 12 03-82	WASHER, REGSPTLK.393X.68X.10	1
50	533 31 98-68	CLIP, 40/46 HANGER	1
51	533 00 14-98	NUT, 5/16-18 REGHEXCTRLK	1
52	533 30 96-15	ROD, 40" REAR DECK LIFT	1
53	533 30 44-43	CLEVIS	1
54	533 10 95-27	NUT, 1/2-13 .458 SQ	1
55	533 12 02-38	NUT, 1/2-13 HEXJAM	1
56	533 30 03-17	PIN, CLEVIS .375DIA.X .81 LG.....	1
57	533 12 03-94	WASHER, FLAT .406X .81X.065	1
58	533 05 61-80	PIN, HAIR .091 DIAX1.62LG	1
60	533 31 98-68	CLIP, 40/46 HANGER	1
61	872 11 05-06	BOLT, 5/16-18X .75 CARR	1
62	533 00 14-98	NUT, 5/16-18 REGHEXCTRLK	1
63	533 31 23-02	ROD, 40" REAR DECK LIFT	1
64	533 30 44-43	CLEVIS	1
65	533 10 95-27	NUT, 1/2-13 .458 SQ.....	1
66	533 12 02-38	NUT, 1/2-13 HEXJAM	1
67	533 30 03-17	PIN, CLEVIS .375DIA.X .81 LG	1
68	533 12 03-94	WASHER, FLAT .406X .81X.065	1
69	533 05 61-80	PIN, HAIR .091 DIAX1.62LG	1
71	533 31 98-68	CLIP, 40/46 HANGER	1
72	533 18 00-77	SCREW, 5/16-18X .75 HHC	1
73	533 00 14-98	NUT, 5/16-18 REGHEXCTRLK	1
74	533 30 96-15	ROD, 40" REAR DECK LIFT	1
75	533 30 52-83	CLEVIS, SLOT EURO.....	1
76	533 10 95-27	NUT, 1/2-13 .458 SQ.....	1
77	533 12 02-38	NUT, 1/2-13 HEXJAM	1
78	533 30 03-17	PIN, CLEVIS .375DIA.X .81 LG.....	1
79	533 12 03-94	WASHER, FLAT .406X .81X.065	1
80	533 05 61-80	PIN, HAIR .091 DIAX1.62LG	1
86	533 30 26-11	GAUGE WHEEL,EURO 6.000DX1.38WD.....	2
87	533 02 37-63	BOLT, .500X1.390 HSH 3/816.....	2
88	533 00 14-99	NUT, 3/8-16 REGHXCTRLK.....	2
91	533 30 44-22	CHUTE DEFLECTOR 40",42"&43"	1
92	533 31 49-75	SPRING,TORSION CHUTE DEFLECTOR	1
93	533 30 44-24	ROD,PIVOT DECK .31 2DX7.25	1
101	533 04 93-32	PIN, CLEVIS .375DX.81LG.....	1
102	533 05 61-80	PIN, HAIR .091 DIAX1.62LG	1
151	533 32 82-57	GUARD, BELT LH PLASTIC	1
152	533 18 00-77	SCREW, 5/16-1 8X .75 HHC	1
154	533 12 03-93	WASHER, FLAT .344X .69X.065	3
156	533 00 14-98	NUT, 5/16-18 REGHEXCTRLK	3
157	872 11 05-06	BOLT, 5/16-18X .63 CARR	2



KEY #	PART #	DESCRIPTION	QTY.
1	533 33 19-30	HARNESS, LT4140 G	1
1	533 33 20-43	HARNESS, LT4130 G	1
2	533 05 74-44	TIE, CABLE BLACK NYLON 5.62L	5
3	533 04 14-82	PRESS CLIP,1.380LG .2551D	2
4	533 05 72-20	SCREW, #12 X .50 PHPNHTAP BLK.....	2
5	533 05 74-76	SWITCH,SCR MNT DP NC NO BLK.....	1
9	533 05 25-72	BULB, HEADLAMP	2
10	533 30 03-34	LIGHT SWITCH ON/OFF PANEL MNT.....	1
12	533 30 30-64	ASSY,LIGHT WIRE-1/4 TURN	1
13	533 05 74-44	TIE, CABLE BLACK NYLON 5.62L	3
17	533 32 73-52	NUT, 5/8-8ACME DELTA FOR BOOT	1
18	533 30 01-94	BOOT, IGN SWITCH.....	1
19	533 32 73-50	KEY,IGNITION.....	2
20	533 32 73-55	SWITCH-IGN.(AFTER FIRE) 3 POSN.....	1
24	506 78 88-01	BATTERY,12V	1
25	533 05 75-51	ROD, BATTERY	1
26	533 30 29-12	ROD, BATTERY TOP .209DIA	1
27	533 32 52-32	NUT, WING 1/4-20 NYLON	1
28	874 76 04-12	SCREW, 1/4-20X .75 HHC	2
29	533 27 11-72	NUT, 1/4-20 REGHEXKEPS	2
30	533 05 55-11	WIRE, GROUND, 12.5'	1
31	533 27 11-84	NUT, 5/16-18 HEXKEPS	1
32	506 56 56-01	SWITCH, SKAT	1
33	506 55 80-01	SCREW, 1/4-20X .38PHPNHMA	2
34	533 32 66-54	SWITCH, SNAP MNT NC .140 BLUE	1
35	533 32 66-53	SWITCH,SNAPMNTNO.055/.116GRY.....	1
36	533 05 74-44	TIE, CABLE BLACK NYLON 5.62	2
40	533 05 37-16	SOLENOID	1
41	533 18 77-45	SCREW, 1/4-20X .75 HXSEMMA.....	2
42	533 12 03-68	NUT, 5/16-24 REGHEX.....	2
43	533 13 84-85	WASHER, EXLK .320X.61X.03	2
44	533 27 11-72	NUT, 1/4-20 REGHEXKEPS.....	1
45	533 00 15-02	NUT, 1/4-20 REGHEXCTRLK.....	2
50	533 30 71-13	CHOKE CONT BS TWIN ERO LONG.....	1
56	506 89 15-01	MINIATURE HOUR METER 4-40V DC	1
61	533 05 77-69	BULB, INDICATOR	3
62	533 30 57-78	HOLDER, LAMP	1
80	533 31 59-02	AMMETER ASSY=>309373,121685,.....	1

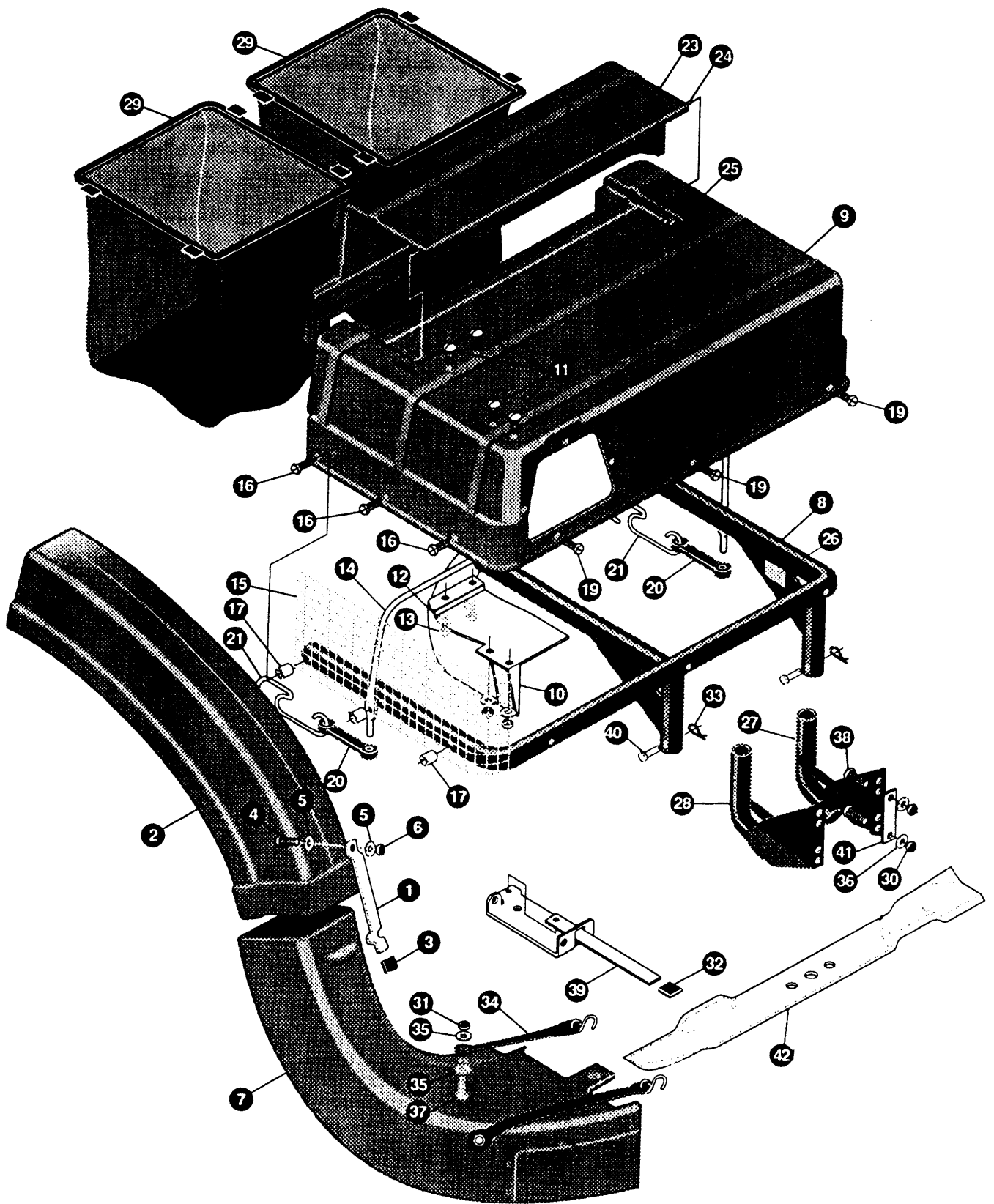
L





KEY #	PART #	DESCRIPTION	QTY.
2	533 30 57-70	DECAL,CAUTION TRIANGLE EUROPE.....	1
3	533 30 68-52	DECAL,DANGER FRENCH	1
4	533 33 18-17	DECAL DASH RH ISO CH,HR,LS,IS.....	1
5	533 30 78-17	DECAL SHIFT INDICATOR EXPORT.....	1
6	533 31 68-51	DECAL,EXPORT BL.CL. ~ DECK HT.....	1
7	533 30 78-20	DECAL PARK BRAKE EXPORT	1
8	533 33 20-96	DECAL,DASH OIL,FUEL,ASG,NO CHG.....	1
10	533 31 05-53	DECAL,DANGER ENGLISH	1
11	533 33 18-07	DECAL DASH LH ISO,AMM,M/CL,M/CH.....	1
12	533 31 10-66	DECAL,DANGER GERMAN	1
13	533 32 28-59	DECAL,DANGER CONS SIDE SWEDISH.....	1
14	533 33 20-58	DECAL, GUNSIGHT CENT. 3 SPOKE.....	1
15	533 31 17-30	DECAL, WHEEL 4 STEER HUSQ. BUM.....	2
16	533 31 17-31	DECAL,LAWNTRACTORSEATSUPP.....	1
17	533 32 08-42	DECAL, WARN 11 /LANG HANDS/FEET	2
18	533 32 08-43	DECAL, WARN DEF SHLD 11 LANG	1
19	533 32 08-44	DECAL,STARTINSTCONS 11LANG.....	1
20	533 32 08-45	DECAL, ENTER & EXIT 11/LANG.....	1
23	533 31 68-86	DECAL GEAR SHIFT 6 SPEED ERO.....	1
24	533 32 21-72	DECAL, HOOD HUSQVARNA RH, LT 4140 G.....	1
24	533 33 21-38	DECAL, HOOD HUSQVARNA RH, LT 4130 G.....	1
25	533 32 21-73	DECAL, HOOD HUSQVARNA LH, LT 4140 G.....	1
25	533 33 21-37	DECAL, HOOD HUSQVARNA RH, LT 4130 G.....	1
26	533 32 21-74	DECAL, GRILLE HUSQVARNA.....	1
27	533 32 21-75	DECAL, REAR FENDER HUSQVARNA	1

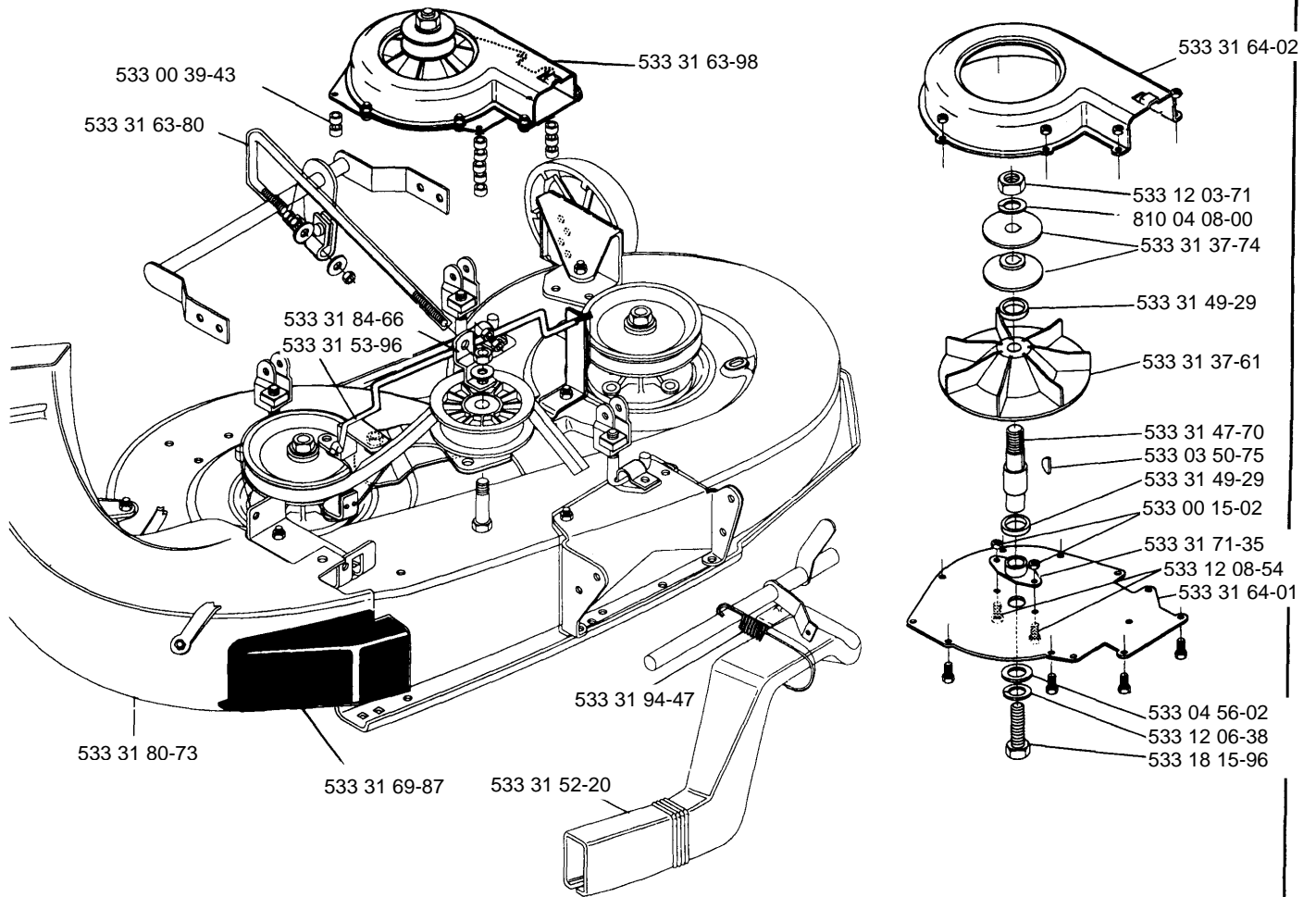
M





KEY #	PART #	DESCRIPTION	QTY.
1	533 32 24-94	LATCH CHUTE	1
2	533 32 24-95	CHUTE, UPPER 40&46 BAGGER	1
3	533 04 23-48	GRIP-LEVER GRASS COLLECTOR.....	1
4	533 12 18-87	SCREW 1/4-20X .75 HHC GR2.....	1
5	734 11 52-01	WASHER, FLAT .28X1.25X.06.....	2
6	533 00 15-02	NUT, 1/4 REGHEXCTRLK.....	1
7	533 31 80-73	CHUTE, LOWER 40"/43" DECK, MOD	1
8	533 32 29-80	WP TUBE ASSY, SUPPORT (DBL-GST)	1
9	533 30 92-95	TOP COVER ERO BAGGER.....	1
10	533 30 51-97	BAFFLE GRASS CATCHER EURO.....	1
11	533 05 56-86	SCREW 1/4-20X .63 SLTRMA BLK	4
12	533 12 03-92	WASHER, FLAT .281X .63X0.65.....	4
13	533 27 11-72	NUT, 1/4-20 REGHEXKEPS	4
14	533 30 91-59	MP SUPPORT ROD, COVER.....	1
15	533 30 62-62	SCREEN ERO BAGGER 6.0X 18.25	1
16	533 30 64-87	SCREW, 1/4-20X1.50 HHTAP GR5	3
17	533 30 60-79	SPACER, BAGGER .87X7/16X.060	2
19	533 04 48-11	SCREW 1/4-20X .75 HXWATAP	6
20	533 05 75-05	RUBBER STRAP ...;	2
21	533 30 96-48	HOLD DOWN,RUBBER STRAP.....	2
23	533 30 93-20	TOPP LID PIVOTING.....	1
24	533 31 01-94	ROD, GRASS CATCHER PIVOT 953	1
25	533 12 12-23	PIN, COTTER .0625X.75LG	2
27	533 32 35-55	ASSY GRASS CATCHER MT.LH.....	1
28	533 32 35-56	ASSY GRASS CATCHER MT.RH	1
29	533 32 21-57	BAG, GRASS CATCHER ERC (LONG).....	2
30	533 00 14-98	NUT, 5/16-18 REGHEXCTRLK	4
31	533 00 15-02	NUT, 1/4-20 REGHEXCTRLK.....	2
32	533 04 23-48	GRIP-LEVER GRASS COLLECTOR.....	1
33	533 05 61-80	PIN, HAI R .091 DIAX1.62LG	2
34	533 05 75-05	RUBBER STRAP	2
35	533 12 03-92	WASHER, FLAT .281X .63X.065.....	4
36	533 12 03-93	WASHER, FLAT .344X .69X.065.....	4
37	533 12 19-00	SCREW, 1/4-20X1.00 HHC GR2.....	2
38	874 78 05-16	SCREW, 5/16-18X1.00 HHC BG8	5
39	533 32 23-20	LEVER ASSY (SMORT)	1
40	533 30 86-19	PIN, CLEVIS .25X1.75	2
41	533 31 51-63	BRKT. PLATE BAGGER.....	2
42	533 30 90-70	BLADE, 20.32 HIGH LIFT	2

N



MODEL NUMBER 4140G

PART NUMBER	SQUARE	NOTE	PART NUMBER	SQUARE	NOTE	PART NUMBER	SQUARE	NOTE	PART NUMBER	SQUARE	NOTE
506 55 80-01	K		533 05 60-30	BC		533 30 04-40	J		533 30 47-09	GH	
506 56 56-01	K		533 05 61-80	JM		533 30 11-40	C		533 30 47-28	E	
506 66 42-01	GH		533 05 62-55	E		533 30 12-39	F		533 30 47-29	F	
506 78 88-01	K		533 05 63-65	I		533 30 22-05	F		533 30 47-30	F	
506 89 15-01	K		533 05 64-25	I		533 30 22-06	F		533 30 49-67	F	
533 00 06-42	C		533 05 64-72	GH		533 30 22-08	F		533 30 51-97	M	
533 00 07-06	CI		533 05 69-07	B		533 30 23-07	A		533 30 52-80	C	
533 00 12-82	I		533 05 71-57	E		533 30 23-14	A		533 30 52-83	J	
533 00 13-46	J		533 05 71-58	C		533 30 23-19	E		533 30 52-84	I	
533 00 14-98	ABCDEFI		533 05 72-20	K		533 30 23-21	C		533 30 53-06	F	
533 00 14-99	CEJ		533 05 73-25	EJ		533 30 23-31	A		533 30 53-39	C	
533 00 15-02	ABEFIKM		533 05 74-44	IK		533 30 23-35	E		533 30 53-40	C	
533 00 24-83	CI		533 05 74-76	K		533 30 23-38	F		533 30 53-81	B	
533 00 29-68	A		533 05 75-05	M		533 30 23-57	F		533 30 53-82	E	
533 00 39-43	N		533 05 75-51	K		533 30 23-60	F		533 30 54-24	B	
533 00 97-96	GH		533 05 77-69	K		533 30 23-79	F		533 30 55-20	B	
533 01 22-80	D		533 05 82-47	I		533 30 23-80	F		533 30 55-22	F	
533 01 22-89	D		533 05 83-25	F		533 30 23-83	F		533 30 55-53	G	
533 01 23-19	D		533 05 83-26	F		533 30 24-98	A		533 30 55-54	G	
533 01 23-25	D		533 05 83-30	F		533 30 25-24	A		533 30 55-55	G	
533 01 24-65	D		533 05 83-32	F		533 30 25-38	E		533 30 57-70	L	
533 01 24-66	D		533 07 10-46	E		533 30 25-82	E		533 30 57-78	K	
533 01 24-67	D		533 07 11-00	A		533 30 25-83	D		533 30 58-20	A	
533 01 25-01	A		533 10 95-27	J		533 30 25-88	D		533 30 58-50	A	
533 02 05-07	F		533 11 13-16	H		533 30 25-93	D		533 30 59-89	F	
533 02 08-64	A		533 12 02-38	FJ		533 30 25-94	D		533 30 60-79	M	
533 02 16-82	D		533 12 03-68	K		533 30 26-11	J		533 30 62-62	M	
533 02 20-53	D		533 12 03-69	C		533 30 27-14	I		533 30 63-91	F	
533 02 37-63	J		533 12 03-71	N		533 30 28-77	D		533 30 63-99	B	
533 02 41-67	CD		533 12 03-76	I		533 30 28-78	D		533 30 64-87	M	
533 02 50-86	AE		533 12 03-77	EJ		533 30 28-97	B		533 30 64-89	L	N
533 02 51-77	D		533 12 03-82	CDJ		533 30 29-07	C		533 30 65-69	C	
533 03 50-75	N		533 12 03-83	J		533 30 29-08	C		533 30 65-70	D	
533 03 52-87	GH		533 12 03-85	BEF		533 30 29-12	K		533 30 66-69	CD	
533 03 54-10	EI		533 12 03-92	AEM		533 30 29-63	J		533 30 68-52	L	
533 03 54-97	ABDEFGH		533 12 03-93	BDFIM		533 30 30-64	K		533 30 68-58	A	
533 03 54-98	BDI		533 12 03-94	EFJ		533 30 30-72	I		533 30 69-73	I	
533 03 63-11	D		533 12 06-38	BHN		533 30 31-09	D		533 30 71-12	C	
533 03 63-68	BE		533 12 08-54	N		533 30 32-22	D		533 30 71-13	K	
533 03 66-25	C		533 12 12-22	F		533 30 32-27	F		533 30 71-74	G	
533 03 95-73	I		533 12 12-23	EM		533 30 32-28	A		533 30 73-62	G	
533 04 02-23	E		533 12 18-87	M		533 30 32-30	F		533 30 73-85	F	
533 04 14-82	K		533 12 19-00	M		533 30 32-41	D		533 30 78-17	L	
533 04 16-01	I		533 12 49-25	CD		533 30 40-25	E		533 30 78-20	L	
533 04 23-48	M		533 13 84-85	K		533 30 40-49	E		533 30 81-15	H	N
533 04 41-08	DFI		533 13 84-89	GH		533 30 40-83	E		533 30 81-88	E	
533 04 48-11	BGHM		533 13 85-38	J		533 30 40-86	E		533 30 83-84	D	
533 04 51-71	E		533 18 00-16	F		533 30 41-05	E		533 30 83-99	D	
533 04 52-63	A		533 18 00-77	BCDFHIJ		533 30 41-15	D		533 30 84-46	D	
533 04 56-02	DFN		533 18 00-79	DI		533 30 41-16	D		533 30 84-47	D	
533 04 67-08	H		533 18 01-34	CF		533 30 41-18	I		533 30 84-59	GH	
533 04 78-28	G		533 18 15-96	N		533 30 41-20	D		533 30 86-19	M	
533 04 80-44	J		533 18 16-46	D		533 30 41-21	D		533 30 87-19	D	
533 04 83-06	F		533 18 16-83	D	N	533 30 41-22	D		533 30 87-20	D	
533 04 93-32	J		533 18 17-09	D	N	533 30 41-25	E		533 30 88-97	A	
533 05 06-16	I		533 18 77-45	K		533 30 41-30	E		533 30 88-98	A	
533 05 07-02	I	N	533 27 11-72	KM		533 30 42-08	E		533 30 90-70	IM	
533 05 07-95	D	N	533 27 11-84	EK		533 30 42-09	E		533 30 91-59	M	N
533 05 08-18	I		533 27 11-90	F		533 30 42-12	E		533 30 92-35	B	
533 05 09-47	GH		533 27 46-54	D		533 30 42-17	E		533 30 92-95	M	
533 05 11-89	E		533 30 01-71	F		533 30 42-59	D		533 30 93-20	M	
533 05 13-35	BE		533 30 01-94	K		533 30 42-60	D		533 30 95-46	E	
533 05 14-49	I		533 30 03-02	AE		533 30 43-67	E		533 30 96-15	J	
533 05 21-51	A	N	533 30 03-03	A		533 30 44-20	I		533 30 96-48	M	
533 05 25-72	K		533 30 03-10	F		533 30 44-22	J		533 31 01-94	M	
533 05 36-52	C		533 30 03-11	F		533 30 44-24	J		533 31 03-26	J	
533 05 37-16	K		533 30 03-17	J		533 30 44-39	GH		533 31 03-84	B	
533 05 52-73	BCFGH		533 30 03-28	C		533 30 44-43	J		533 31 05-53	L	N
533 05 55-11	K		533 30 03-34	K		533 30 44-48	F		533 31 05-76	B	
533 05 56-86	M		533 30 03-45	I		533 30 44-81	B		533 31 06-70	C	

N=New part
 Neues teil
 Nouvelle piece
 Nueva pieza
 Ny detalj

MODEL NUMBER 4140G

PART NUMBER	SQUARE	NOTE	PART NUMBER	SQUARE	NOTE	PART NUMBER	SQUARE	NOTE	PART NUMBER	SQUARE	NOTE
533 31 08-00	I		533 32 35-55	M	N						
533 31 10-66	L	N	533 32 35-56	M	N						
533 31 17-30	L	N	533 32 37-31	A							
533 31 17-31	L	N	533 32 37-43	D							
533 31 23-02	J		533 32 45-78	D							
533 31 23-42	I		533 32 47-95	A							
533 31 27-01	F		533 32 51-03	I							
533 31 32-71	E		533 32 52-32	K							
533 31 33-16	I		533 32 63-24	H	N						
533 31 37-61	N		533 32 64-80	I	N						
533 31 37-74	N		533 32 66-53	K	N						
533 31 38-98	I		533 32 66-54	K	N						
533 31 44-16	C		533 32 68-93	I							
533 31 47-70	N		533 32 73-50	K	N						
533 31 47-97	G		533 32 73-52	K	N						
533 31 48-88	B		533 32 73-55	K	N						
533 31 48-89	B		533 32 76-15	J	N						
533 31 49-29	N		533 32 76-16	J	N						
533 31 49-75	J		533 32 78-31	B							
533 31 51-63	M	N	533 32 80-26	J	N						
533 31 52-20	N		533 32 82-57	J	N						
533 31 53-96	N		533 33 08-47	A	N						
533 31 55-99	G	N	533 33 11-84	A	N						
533 31 57-16	H	N	533 33 13-79	A	N						
533 31 59-02	K	N	533 33 18-07	L	N						
533 31 63-80	N		533 33 18-17	L	N						
533 31 63-98	N	N	533 33 19-30	K	N						
533 31 64-01	N		533 33 20-43	K	N						
533 31 64-02	N		533 33 20-58	L	N						
533 31 68-51	L	N	533 33 20-96	L	N						
533 31 68-86	L	N	533 33 21-33	A	N						
533 31 68-97	N		533 33 21-37	L	N						
533 31 69-87	N		533 33 21-38	L	N						
533 31 70-17	I		533 33 24-08	H	N						
533 31 70-18	I		533 33 24-21	H	N						
533 31 70-19	C		533 41 23-49	D							
533 31 70-41	I		533 42 10-51	D							
533 31 71-35	N		533 42 86-44	J							
533 31 77-05	I		533 44 63-63	DJ							
533 31 80-73	M		533 45 63-78	A							
533 31 83-04	A	N	533 45 67-22	D							
533 31 84-66	N		533 99 53-46	AH							
533 31 93-87	B		533 99 64-16	C							
533 31 93-88	B		734 11 52-01	BM							
533 31 94-47	N		734 11 78-01	I							
533 31 98-68	J		738 22 03-19	I							
533 32 05-31	D		810 04 08-00	N							
533 32 08-42	L	N	872 11 05-06	FGHIJ							
533 32 08-43	L	N	873 22 06-00	I							
533 32 08-44	L	N	874 61 06-24	D							
533 32 08-45	L	N	874 76 04-12	K							
533 32 09-22	G		874 78 04-14	ABE							
533 32 13-06	G		874 78 05-16	M							
533 32 13-82	D		874 78 05-44	D							
533 32 14-21	E		874 78 06-16	D							
533 32 15-16	C		874 78 06-20	E							
533 32 18-10	A		874 78 06-48	C							
533 32 20-68	B										
533 32 20-69	B										
533 32 21-16	I	N									
533 32 21-57	M	N									
533 32 21-72	L	N									
533 32 21-73	L	N									
533 32 21-74	L	N									
533 32 21-75	L	N									
533 32 23-20	M	N									
533 32 24-94	M	N									
533 32 24-95	M	N									
533 32 28-59	L	N									
533 32 29-80	M	N									

N=New part
 Neues teil
 Nouvelle piece
 Nueva pieza
 Ny detalj