

LT4140H



1.1995

Spare parts

Ersatzteile

Pièces détachées

Reserve onderdelen

Repuestos

Reservdelar

Replaces

Ersetzt

Remplace

Vervangt

Reemplaza

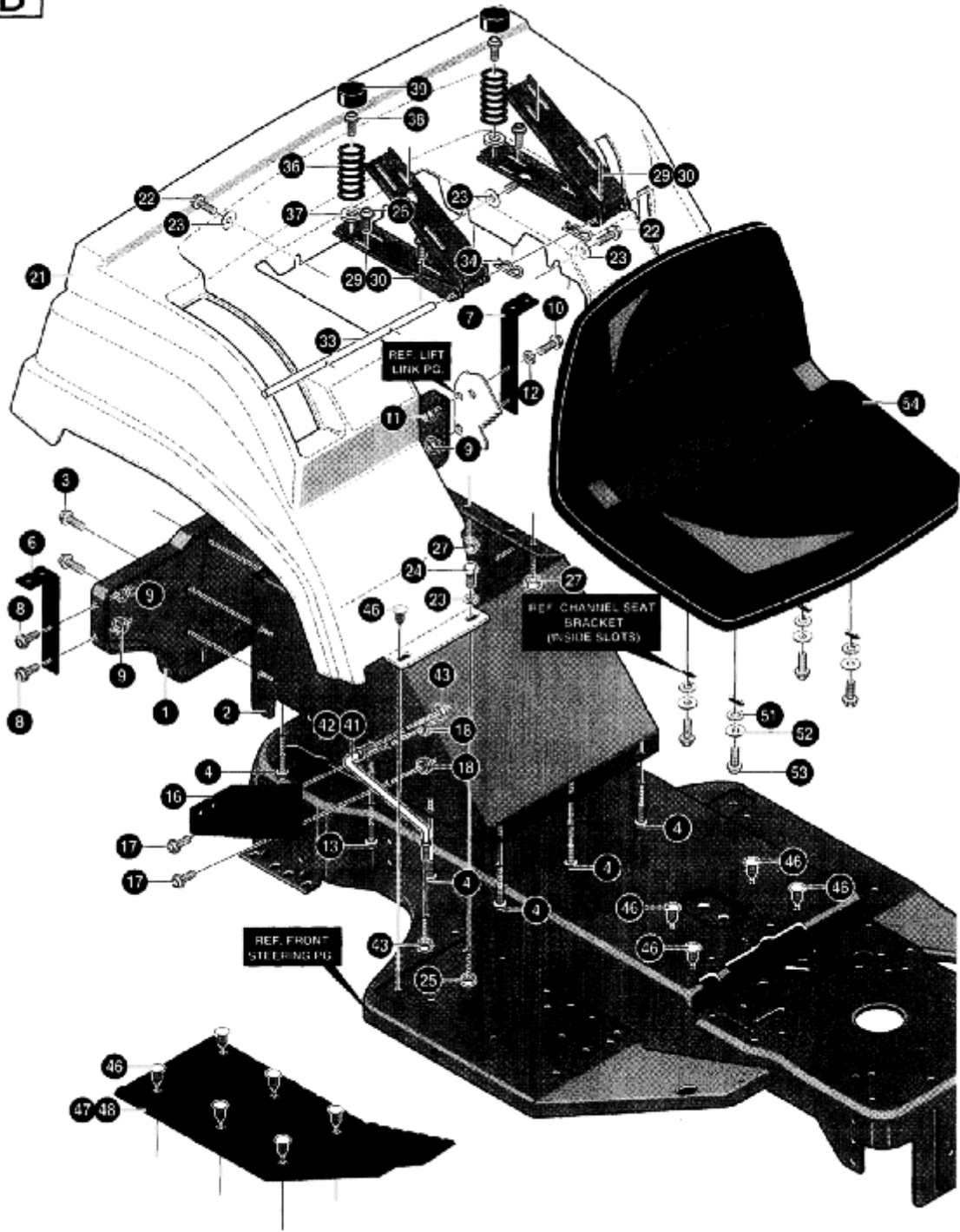
Ersätter

106 23 01-62

A

KEY#	PART #	DESCRIPTION	QTY.
1	533 30 23-07	SHAFT, STEERING EURO LT SHORT	1
2	533 30 25-24	PIN, LOWER STR EURO LT	1
3	533 30 23-14	PINION, STEERING	1
4	533 32 37-31	SCREW, 5/16-24 X .75 (TQ 30-35 FT#)	2
5	533 07 11-00	NUT, 5/16-24 HEXWDFLK	2
6	533 30 24-98	BEARING, FLANGED .500 ID X .OD X .75	1
7	533 00 29-68	WASHER, FLAT .504 X .75 X .069	1
8	533 02 08-64	RING, RET E .39 X .04 TRU 5133-50	1
9	533 30 32-28	BUSHING STEER, SHIFT UPPER	1
12	533 32 18-10	BUMPER, HOOD/DASH, EURO, TOP	2
13	533 33 13-79	DASH, TALL	1
14	533 18 00-20	SCREW, 1/4-20 X .75 HHC	2
15	533 00 15-02	NUT, 1/4-20 REGHEXCTRLK	2
16	533 12 03-92	WASHER, FLAT .281 X .63 X .065	2
19	533 30 23-31	DASH, LOWER SHORT, LT	1
20	533 03 54-97	SCREW, 5/16-18 X .50 WAHHTAP	8
21	533 04 52-63	SCREW, 5/16-18 X .37 WAHHTAP	2
23	533 99 53-46	SCREW, 1/4-20 X .50 WAHHTAP	2
24	533 30 58-50	SCREW, 1/4-20 X .50 PHPNTAP	4
26	533 30 88-98	BRACKET, HOOD, RH, H18/G18	1
27	533 30 88-97	BRACKET, HOOD, LH	1
28	533 00 14-98	NUT, 5/16-18 REGHEXCTRLK	2
29	533 02 50-86	BOLT, .500 X .375 HSSH 5/16-18	2
33	533 33 21-13	HOOD, UPPER	1
34	533 05 21-51	EDGING, WIDE BLACK	7B*
41	533 33 11-17	LENS, EURO II HOOD SMOKED GREY	1
42	533 31 05-34	DECAL, REFLECTOR VER II HOOD	1
43	533 30 03-02	SCREW, #10 X .50 HHTAPPST	4
45	533 33 11-84	GRILLE, MOLD/GREY	1
46	533 31 83-04	SCREW, 1/4-14 X .75 PHPNHTAP	3
50	533 30 58-20	ASSEMBLY, GAS TANK 1.5GALLON (OPTION)	1
52	532 12 34-87	CLAMP, FUEL LINE	1
53	532 12 34-87	CLAMP, HOSE SCREW TYPE	1
58	533 30 03-03	SCREW, .25 X .75 X .51 HHWAPLASTITE	8
60	533 01 25-01	CAP, FUEL 2.5" THROAT	1
62	533 32 47-95	HEAT SHIELD, EURO 1.5 & 3 GALLON	1
76	533 33 08-47	STEERING WHEEL	1
77	533 45 63-78	PIN, SPRING .250 DIA X 2.00 LONG HVPL	1

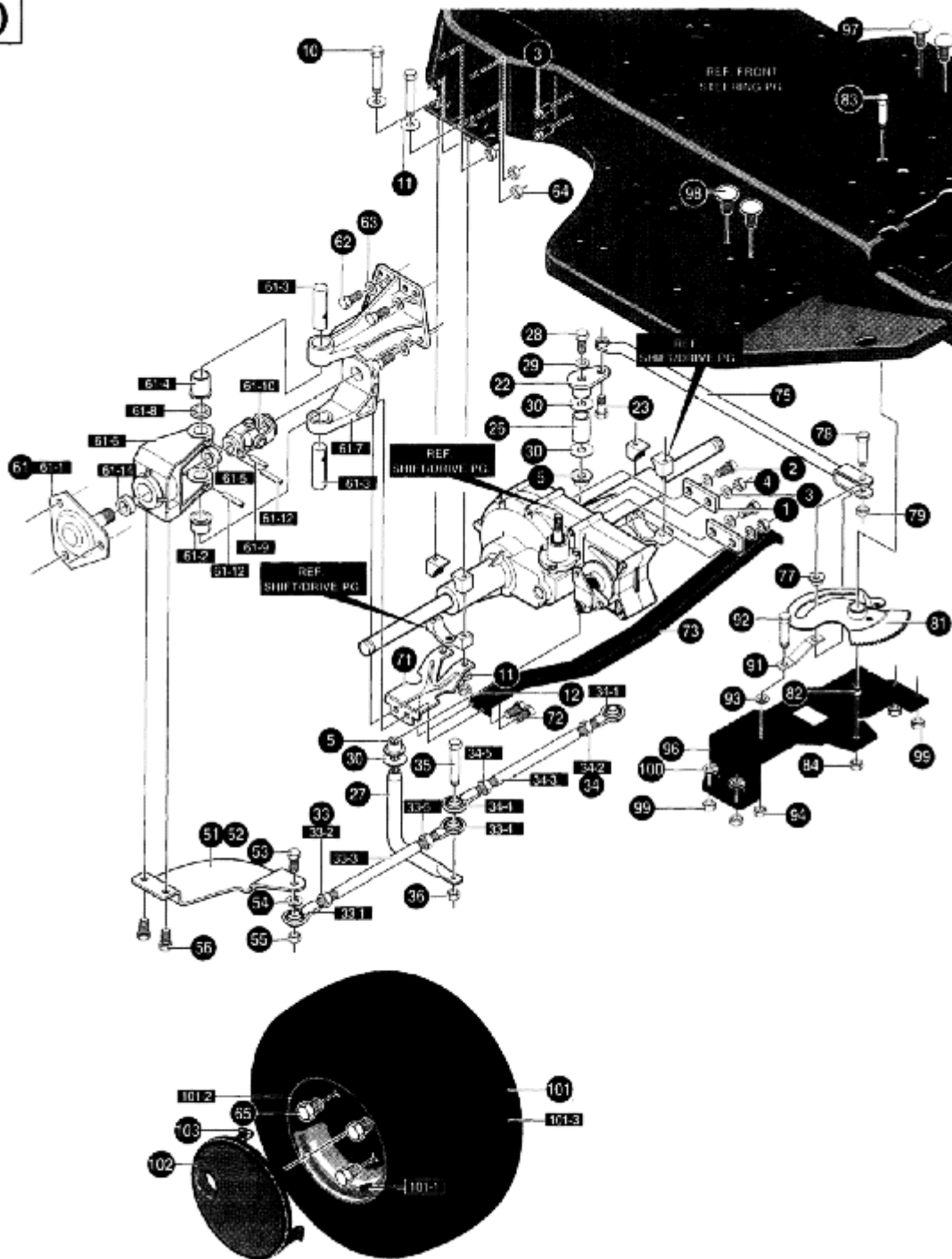
B



KEY #	PART #	DESCRIPTION	QTY
1	533 32 20-68	SEAT SUPPORT, ELECTRIC LIFT	1
2	533 32 20-69	SUPPORT, FENDER & SEAT ELECTRIC/LIFT	1
3	533 03 54-98	SCREW, 5/16-18 X .75 WAHHTAP	5
4	533 03 54-97	SCREW, 5/16-18 X .50 WAHHTAP	10
6	533 30 63-99	SUPPORT, FENDER, RIGHT	1
7	533 30 63-97	SUPPORT, FENDER, LEFT	1
8	533 05 60-30	SCREW, 5/16-18 X .75 WDFLLK	3
9	533 05 52-73	NUT, 5/16-18 HXWDFLLK	3
10	533 18 00-20	SCREW, 1/4-20 X .75 HHC	1
11	533 05 13-35	NUT, 1/4-20 WDFLWHIZ-I K	1
12	533 12 03-85	WASHER, FLAT .250 X .58 X .049	1
13	533 18 00-77	SCREW, 5/16-18 X .75	1
16	533 30 53-81	SUPPORT, SHIFT PLATE	1
17	533 05 60-30	SCREW, 5/16-18 X .75 WDFLLK	2
18	533 05 52-73	NUT, 5/16-18 HXWDFLLK	2
21	533 31 05-76	FENDER, EURO, GT	1
22	533 04 48-11	SCREW, 1/4-20 X .75 WAHHTAP	6
23	734 11 52-01	WASHER, FLAT .281 X 1.00 X .063	8
24	533 18 00-20	SCREW, 1/4-20 X .75 HHC	2
25	533 00 15-02	NUT, 1/4-20 REGHEXCTRLK	2
26	533 05 60-30	SCREW, 5/16-18 HXWDFLLK	4
27	533 00 14-98	NUT 5/16-18 REGHEXCTRLK	4
29	533 30 28-97	CHANNEL, SEAT, RH	2
30	533 30 54-24	CHANNEL, SEAT, LH	2
33	533 30 44-81	ROD, SEAT SUPPORT	1
34	533 03 63-68	PIN, HAIR .072 DIA X 1.13 LONG	2
36	533 33 04-63	SPRING, SEAT 1.50 OD X 2.25 LONG	2
37	533 12 03-93	WASHER, FLAT .344 X .68 X .065	2
38	533 03 54-98	SCREW, 5/16-18 X .75 WAHHTAP	2
39	533 05 69-07	COVER, SEAT SPRING 1.5 ID X 1.0 LONG	2
41	533 31 93-88	SUPPORT, FOOTREST STIFFNER, RH	1
42	533 31 93-87	SUPPORT, FOOTREST STIFFNER, LH	1
43	533 00 14-98	NUT, 5/16-18 REGHEXCTRLK	4
46	533 31 10-87	FASTENER, RATCHET GREY	18
47	533 31 48-88	FOOT PAD ASSEMBLY, RH, EURO W/ADH	1
48	533 31 48-89	FOOT PAD ASSEMBLY, LH, EURO W/ADH	1
51	533 12 03-93	WASHER, FLAT .344 X .68 X .065	4
52	533 12 06-38	WASHER, HVSPITLK .326 X .60 X .09	4
53	533 18 00-77	SCREW, 5/16-18 X .75 HHC	4
54	533 31 03-84	SEAT, W/SW HOLE	1

KEY#	PART#	DESCRIPTION	QTY
2	533 30 52-80	COVER, SECTOR BOLT PLAS GREY	1
6	533 30 23-21	BRACKET, FRONT AXLE SUPPORT	1
7	533 05 60-30	SCREW, 5/16-18 X .75 WDFLLK	2
8	533 05 52-73	NUT, 5/16-18 HXWDFLLK	6
9	533 05 36-52	SCREW, 5/16-18 X .75 HXWDFL	4
10	533 30 71-12	PLUG, FRONT AXLE 1.938 DIA X .062'	2
12	^	SUB-ASSEMBLY FRONT AXLE, EURO, LT, SHORT	1
12-5	533 31 06-70	AXLE ASSEMBLY, FRONT WELD, BLACK	1
12-10	533 18 00-77	SCREW, 5/16-18 X .75 HHC	4
12-15	533 00 14-98	NUT, 5/16-18 REGHEXCTRLK	4
12-20	533 30 53-40	ASSEMBLY, SPINDLE, RH, EURO, LT	1
12-21	533 99 64-16	WASHER, FLAT .391 X 1.00 X .125	2
12-22	533 03 66-25	RING, RETEX .57 X .05 TRU 5133-75	1
12-25	533 30 53-39	ASSEMBLY, SPINDLE, LH, EURO, LT	1
12-26	533 31 70-19	ARM STEERING UPPER, BLACK	1
12-27	533 18 01-34	SCREW, 3/8-16 X 2.50 HHC	1
12-28	533 00 14-99	NUT, 3/8-16 REGHXCTRLK	1
13	874 78 06-48	SCREW, 3/8-18 X 3.00 HHC	2
14	533 00 24-83	WASHER, .39 ID X 1.25 D X .07 BELLVIL	2
15	533 00 14-99	NUT, 3/8-16 REGHXCTRLK	2
17	533 00 07-06	ZERK, GREASE FITTING	4
18	533 00 06-42	WASHER, FLAT .755 X 1.31 X .075	4
19	533 03 66-25	RING, RETEX .57 X .05 TRU 5133-75	2
23	533 30 03-28	TIE ROD, .625 DIA GROUND ENGAGER	1
24	533 12 03-69	NUT, 3/8-24 REGHEX	2
25	533 12 03-82	WASHER, REGSPTLK .393 X .68 X .10	2
26	533 30 29-08	LINK ASSEMBLY, .625 DIA DRAG, LT, 4WS	1
26-1	533 05 71-58	BALL JOINT, 3/8 THD SHORT STUD	2
26-2	533 12 49-25	NUT, 3/8-24 REGHEXJAM	2
26-3	533 30 29-07	LINK, .625 DIA DRAG, LT, 4WS	1
27	533 12 03-82	WASHER, REGSPTLK .393 X .68 X .10	2
28	533 12 49-25	NUT, 3/8-24 REGHEXJAM	2
41	533 32 15-15	TIRE & RIM, PU 15 X 6.0 X 6	2
41-1	533 02 41-67	VALVE STEM	
41-2	533 32 15-16	RIM, WHEEL	
41-3	533 31 55-16	BEARING, FLANGE	
41-4	533 31 67-02	TIRE 15 X 6.0 X 6	
44	533 30 44-44	HUB CAP, 6" EURO	2
45	533 30 66-69	CLIP, HUBCAP TINN #C25467-017-4	8

D



KEY#	PART#	DESCRIPTION	QTY
1	533 31 45-11	BRACKET, REAR PIVOT, HYDRO	2
2	533 04 48-11	SCREW, 1/4-20 X .75 WAHHTAP	2
3	533 12 03-80	WASHER, REGSPTLK .263 X .49 X .07	4
4	533 12 03-75	NUT, 1/4-20 REGHEX.....	2
5	533 30 23-03	BEARING, SPINDLE, FR W/HOLE	2
10	533 18 00-91	SCREW, 5/16-18 X 2.50 HHC	4
11	533 12 03-93	WASHER, FLAT .344 X .69 X .065	8
12	533 04 41-08	NUT, 5/16-18 HWDFLCTRLK.....	4
22	533 30 87-19	PIVOT, STEERING	1
23	533 01 23-19	BOLT, .562 X .340 HSH 3/8-24	1
26	533 31 36-41	SPACER, STEERING SHAFT HYDRO.....	1
27	533 31 36-49	SHAFT, STEERING PIVOT HYDRO	1
28	533 42 10-51	SCREW, 5/16-24 X 1.00 HHC	1
29	533 04 56-02	WASHER, FLAT .333 X .87X .119	1
30	533 02 51-77	WASHER, FLAT .765X1.19X.048	3
33-1	533 30 83-84	BALLJOINT, LH, 3/8-24	1
33-2	533 12 49-25	NUT, 3/8-24 REGHEXJAM	1
33-3	533 31 36-42	ROD, TIE 1/2"D X 6.75 LONG	1
33-4	533 30 42-60	BALL JOINT, RH, 3/8-24.....	1
33-5	533 30 83-99	NUT, 3/8-24, LH, THD REGHJAM.....	1
34-1	533 30 83-84	BALL JOINT, LH, 3/8-24	1
34-2	533 12 49-25	NUT, 3/8-24 REGHEXJAM	1
34-3	533 31 36-43	ROD, TIE 1/2"D X 10.91 LONG	1
34-4	533 30 42-60	BALL JOINT, RH, 3/8-24.....	1
34-5	533 30 83-99	NUT, 3/8-24, LH, THD REGHJAM.....	1
35	533 18 16-46	SCREW, 3/8-24 X 1.75 HHC	1
36	533 41 23-49	NUT, 3/8-24 HXCTRLK	1
51	533 30 41-20	ARM, REAR WHEEL STEER, RH	1
52	533 30 41-21	ARM, REAR WHEEL STEER, LH	1
53	533 18 16-39	SCREW, 3/8-24 X 1.25 HHC	2
54	533 12 03-82	WASHER, REGSPTLK .393 X .68 X .10	2
55	533 41 23-49	NUT, 3/8-24 HXCTRLK	2
56	533 04 77-92	SCREW, 3/8-16 X 1.00 WAHHTAP, BLACK.....	4
61	533 32 37-36	U-JOINT, 4-WS, HEAVY DUTY	2
61-1	533 31 52-64	HUB ASSEMBLY HEAVY	1
61-2	533 32 45-78	BEARING, FLSH .752 ID X .937 OD X .75	1
61-3	533 01 22-89	PIN, STEERING HINGE	2
61-4	533 32 45-78	BEARING, FLSH	1
61-5	533 01 23-25	BEARING, BALL 6203-2AA-3/4	1
61-6	533 31 52-67	BRACKET, STEER PIVOT 6204 BEARING.....	1
61-7	533 01 24-66	BRACKET, STEER PIVOT	1
61-8	533 02 16-82	WASHER, FLAT .765 X 1.25 X .042	1
61-9	533 03 63-11	PIN, GROOVED .250 DIA X 1.50 LONG	1
61-10	533 32 05-31	U-JOINT ASSEMBLY, W/ZERK (LONG)	1
61-12	533 45 67-22	PIN, SPRING .250 DIA X 1.50 LONG	2
61-14	533 31 52-68	BEARING, BALL 6204-2AA-7/8	1
62	533 18 00-79	SCREW, 5/16-18 X 1.00 HHC	8
63	533 12 03-93	WASHER, FLAT .344 X .69 X .065	8
64	533 00 14-98	NUT, 5/16-18 REGHEXCTRLK	8
65	533 18 16-83	SCREW, 1/2-20 X .50 HHC	6
71	533 31 36-45	BRACKET, X-AXLE MTG, 4WS, HYDRO	2
72	533 03 54-98	SCREW, 5/16-18 X .75 WAHHTAP	4
73	533 32 29-59	BRACKET, HYDRO, 4WS, SUPPORT	1
75	533 31 36-39	ROD, REAR WHEEL STEER, 4WS, HYDRO	1
77	533 30 41-16	CAM YOKE ROLLER	1
78	533 30 41-22	BOLT, .625 X 1.175HSH	1
79	533 27 46-54	NUT, 1/2-20 REGHXCTRLK	1
81	533 30 28-77	ASSEMBLY, SECTOR GEAR, 4WS	1
82	533 30 28-78	BEARING, SLEEVE	1
83	533 18 17-09	SCREW, 1/2-20 X 2.50 HHC	1
84	533 27 46-54	NUT, 1/2-20 REGHXCTRLK	1
91	533 30 25-94	FOLLOWER, ROLLER	1
92	533 30 25-88	BOLT, .265 X .800 HSH 3/8-24	1
93	533 44 63-63	WASHER, FLAT .375 X .88 X .082	1
94	533 41 23-49	NUT, 3/8-24 HXCTRLK	1
96	533 30 25-83	PLATE, PIVOT STEERING, EURO	1
97	533 03 54-97	SCREW, 5/16-18 X .50 WAHHTAP	2
98	533 03 54-98	SCREW, 5/16-18 X .75 WAHHTAP	2
99	533 00 14-98	NUT, 5/16-18 REGHEXCTRLK	4
100	533 44 63-63	WASHER, FLAT .375 X .88 X .082	2
101	533 30 42-59	TIRE & RIM, 20 X 10.00-8	2
101-1	533 02 41-67	VALVE STEM	
101-2	533 31 66-67	RIM, WHEEL	
101-3	533 31 96-86	TIRE 20 X 10 X 8	
102	533 30 66-69	HUB CAP, 8" EURO.....	2
103	533 30 66-69	CLIP, HUBCAP I INN #C25467-017-4	10



KEY #PART

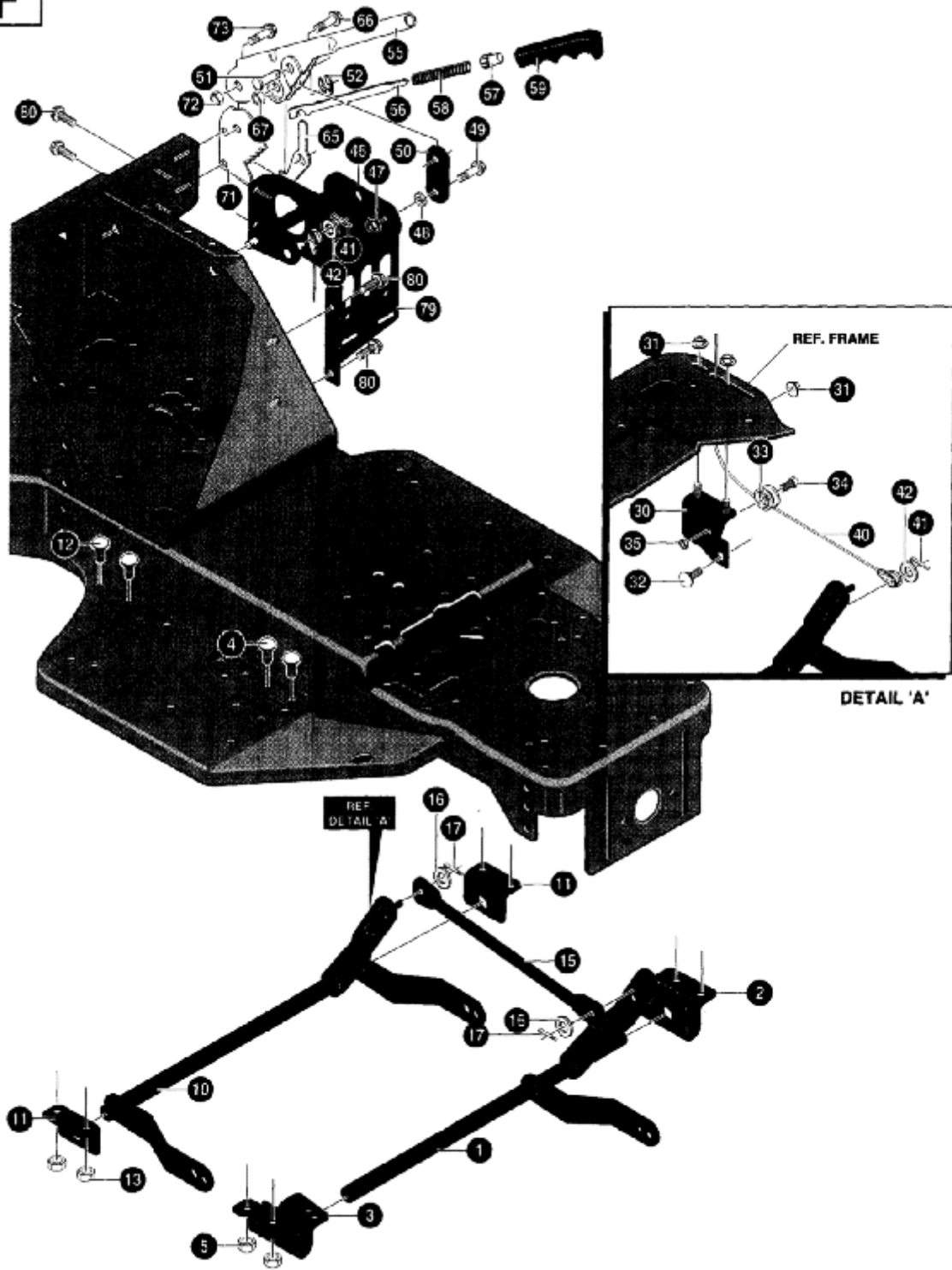
DESCRIPTION

QTY

E

1	533 32 27-18	SHIFT ROD ASSEMBLY.....	1
2	533 31 32-71	BRACKET, CLUTCH/BRAKE ARM	2
4	533 03 54-97	SCREW, 5/16-18 X .50 WAHTAP.....	4
6	874 76 05-32	SCREW, 5/16-18 X 2.00 HHC	1
7	533 00 08-45	WASHER, FLAT .390 X 1.25 X .119	1
8	533 04 99-22	WASHER, FRICTION 1.25 OD X .34 ID	2
9	533 02 91-70	SPRING	1
10	533 12 03-93	WASHER, FLAT .344 X .69 X .065	1
11	533 00 14-98	NUT, 5/16-18 REGHEXCTRLK	1
16	533 31 03-56	BRACKET, PIVOT SHIFT LEVER	1
17	874 76 04-12	SCREW, 1/4-20 X .75 HHC	2
18	873 68 04-00	NUT, 1/4-20 WDFL MAC-LOCK	2
21	533 32 88-20	ROD SHIFT	1
22	533 07 10-73	WASHER, FLAT .469 X .92 X .065	5
23	533 33 01-07	SPRING-TORSION, HYDRO SHIFT	1
24	533 12 12-22	PIN, COTTER .090 DIA X .75 LONG	1
31	533 31 02-63	QUADRANT, SHIFT HYDRO	1
32	533 30 03-02	SCREW, #10 X .50 HHTAPPST	4
33	874 76 04-12	SCREW, 1/4-20 X .75 HHC	4
34	533 05 13-35	NUT, 1/4-20 WDFLWHIZ-LK.....	4
35	533 30 47-29	HANDLE, 1/2-13 MOLDED	1
36	533 12 02-38	NUT, 1/2-13 HEXJAM	1
47	533 32 49-36	SHIFT LINK ASSEMBLY, .625 DIA.....	1
49	533 41 23-49	NUT, 3/8-24 HXCTRLK.....	2
56	533 31 01-80	ARM, SPEED CONTROL HYDRO	1
57	533 45 66-52	PIN, SPRING .187 DIA X .88 LONG	1
58	533 10 25-70	SCREW, 1/4-20 X .38 NYLALHSETCPPT	1
62	533 31 00-98	PULLEY ASSEMBLY, HYDRO	1
63	533 31 00-94	NUT, PULLEY 1/2-20 AND 1/4-20	1
64	734 11 65-41	WASHER, FLAT .281 X 1.25 X .06	3
65	533 30 85-23	FAN, HYDRO 7.00 DIA-10 BLADES	1
66	533 12 03-80	WASHER, REGSPTLK .263 X .49 X .07	1
68	874 76 04-12	SCREW, 1/4-20 X .75 HHC	1
71	533 32 67-69	TRANSAXLE, HG #217-1010S	1
81	533 31 08-13	MOUNTING BLOCKS, LH, HYDRO	4
82	533 31 01-87	MOUNTING BLOCKS, HYDRO.....	2
96	533 31 01-79	STABILIZER BRACKET.....	1
97	533 18 00-77	SCREW, 5/16-18 X .75 HHC	2
98	533 00 14-98	NUT, 5/16-18 REGHEXCTRLK	3
111	533 31 02-61	ROD-RELIEF VALVE	1
113	533 31 00-88	BOLT, .250 X .312 HSH 1/4-20	1
114	533 00 24-83	WASHER, .39 ID X 1.25 D X .07 BELLVIL	1
115	533 00 15-02	NUT, 1/4-20 REGHEXCTRLK.....	1
121	533 31 02-60	LEVER ,PARK BRAKE.....	1
122	533 31 47-38	ROD CLUTCH	1
125	533 32 50-09	SPRING, BRAKE HG, HYDRO (EURO)	1
126	533 31 00-87	BOLT, .500 X .500 HSH 5/16-18	1
127	533 00 14-98	NUT, 5/16-18 REGHEXCTRLK	1
131	533 31 02-57	ASSEMBLY, WELD CLUTCH/BRAKE, ROD	1
132	533 30 23-35	PAD, CLUTCH/BRAKE MOLD W/L	1
133	533 31 32-71	BRACKET, CLUTCH/BRAKE ARM	2
134	533 03 54-97	SCREW, 5/16-18 X .50 WAHTAP	2
141	533 30 42-17	ROD, PARKING BRAKE	1
142	533 30 43-67	KNOB, PARK BRAKE	1
143	533 12 03-85	WASHER, FLAT .250 X .56 X .049	2
144	533 12 12-23	PIN, COTTER .062 DIA X .75 LONG	1
151	533 31 47-86	ARM IDLER	1
152	533 31 02-69	BOLT, .621 X .143 HSH 5/16-18	1
153	533 00 14-98	NUT, 5/16-18 REGHEXCTRLK	1
154	533 04 56-02	WASHER, FLAT .333 X .87 X .119	1
155	533 31 36-60	SPRING, CLUTCH .113 X .750 X 6.88	1
161	533 30 30-31	PULLEY, IDLER V4L 3.12 EFF DIA	1
162	533 03 96-59	RETAINER, BELT	1
163	533 04 58-92	BOLT, 3/8-16 X 1.50 CARR	1
164	533 12 03-77	NUT, 3/8-16 REGHX	1
165	533 12 03-82	WASHER, REGSPTLK .393 X .68 X .10	1
167	533 31 02-75	BELT, V 4L 82.5, HYDRO TRACTION	1

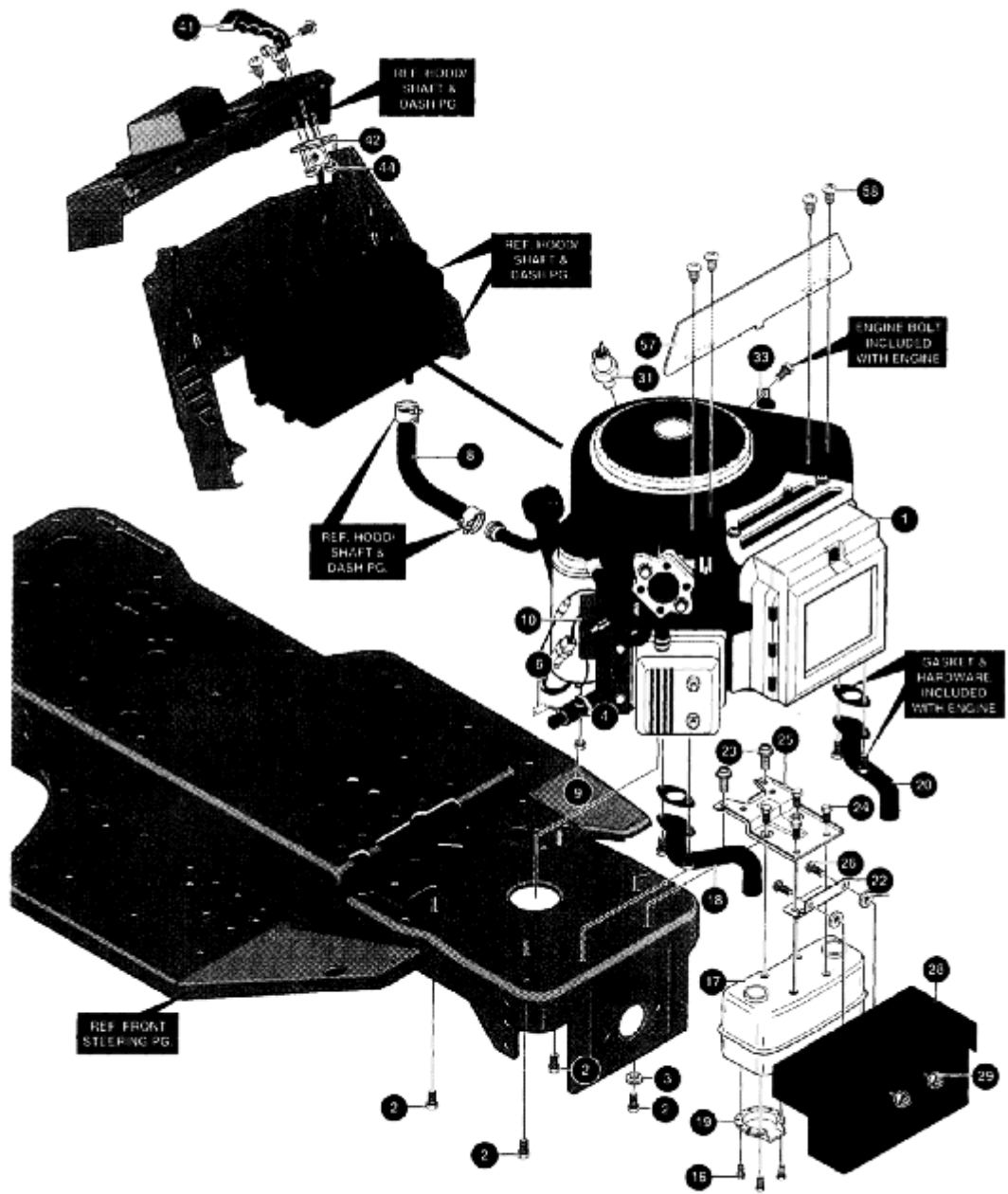
F





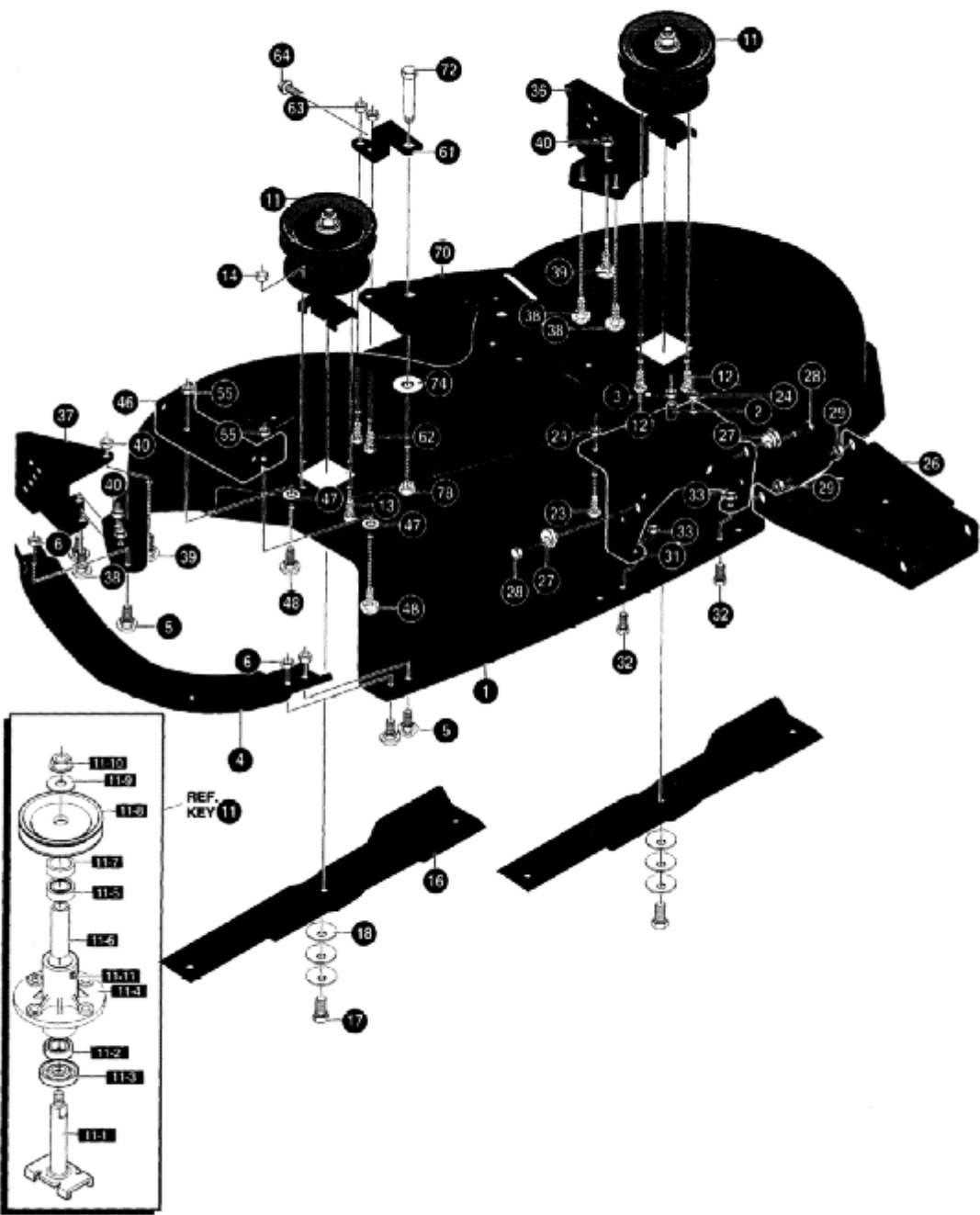
KEY #	PART #	DESCRIPTION	QTY
1	533 30 23-79	SHAFT ASSEMBLY, FRONT, LIFT, EURO	1
2	533 30 49-67	BRACKET FRONT HANGER, RH	1
3	533 30 23-38	BRACKET FRONT HANGER, LH.....	1
4	533 18 00-77	SCREW, 5/16-18 X .75 HHC	4
5	533 00 14-98	NUT, 5/16-18 REGHEXCTRLK	4
10	533 30 92-13	SHAFT ASSEMBLY, REAR, LIFT, ELECTIRC EURO .	1
11	533 30 23-60	BRACKET, REAR, HANGER EURO	2
12	533 18 00-77	SCREW, 5/16-18 X .75 HHC	4
13	533 00 14-98	NUT, 5/16-18 REGHEXCTRLK	4
15	533 30 23-80	TIE ROD	1
16	533 12 03-94	WASHER, FLAT .406 X .81 X .065	2
17	533 12 12-22	PIN, COTTER .090 DIA X .75 LONG	2
30	533 30 32-30	ASSEMBLY,PULLEY BRKT	1
31	533 05 52-73	NUT, 5/16-18 HXWDFLLK	3
32	872 11 05-06	BOLT, 5/16-18X .63 CARRLN	1
33	533 04 83-06	PULLEY,POWDER METAL	1
34	533 30 55-22	BOLT, .375X .700 HSH 5/16-18.....	1
35	533 00 14-98	NUT, 5/16-18 REGHEXCTRLK	1
40	533 30 32-27	CABLE,DECK LIFT	1
41	533 12 12-22	PIN, COTTER.090 DIA X .75 LG.....	2
42	533 12 03-93	WASHER, FLAT .344X .69X .065	2
46	533 30 22-05	ASSY, UPPER SHAFT	1
47	533 00 14-98	NUT, 5/16-18 REGHEXCTRLK	1
48	533 04 56-02	WASHER, FLAT .333X .87X .119	1
49	533 03 61-49	BOLT, .375X .500 HSH 5/16-18.....	1
50	533 30 23-57	LINK	1
51	533 30 03-10	PIN,CLEVIS .31 ODIA+.475LG	1
52	533 30 03-11	RING, RET E .31X.25TRUX5133-31	1
55	533 05 83-32	HEIGHT LEVER	1
56	533 05 83-30	ROD, ACTUATOR.....	1
57	533 05 83-25	KNOB, HEIGHT ADJ PUSH BUTTON	1
58	533 05 83-26	SPRING, HEIGHT ADJUST.....	1
59	533 30 47-30	GRIP, HAND .741DX5.15	1
65	533 30 12-39	PAWL, SQUARE	1
66	533 30 01-71	BOLT, .500X .270 HSH 5/16-18.....	1
67	533 04 41-08	NUT, 5/16-18 HWDFLCTRLK	1
71	533 30 23-83	QUADRANT.....	1
72	533 00 14-98	NUT, 5/16-18 REGHEXCTRLK	1
73	533 30 01-71	BOLT, .500X .270 HSH 5/16-18.....	1
79	533 30 22-08	BRACKET, SUPPORT ENGAGE	1
80	533 03 54-97	SCREW, 5/16-18X .50 WAHHTAP	4

G



KEY #	PART #	DESCRIPTION	QTY.
1	ENGINE	14-16HP, VANGUARD (SEE ENGINE MANUAL)	1
2	533 05 09-47	SCREW, 3/8-16 X 1.25 WAHHTAPBLKP	4
3	533 13 84-89	WASHER, EXLK .384 X .69 X .04	1
4	533 30 71-74	NIPPLE, 3/8-18 NPT X 4"	1
6	533 04 78-28	CAP, PIPE 3/8-18 NPT	1
8	506 66 42-01	TUBING, .25 X .50 X BULK GAS LINE	10 IN.
10	533 31 55-99	REGULATOR, VOLTAGE, B&S, W/O SENSOR	1
16	533 03 52-87	SCREW, #8-32 X .38 HHWATAP	4
17	533 30 55-53	MUFFLER, 14/18HP, TWIN NLSN 22785C	1
18	533 30 55-54	EXHAUST TUBE, 15HP,RH,B&S,VANG	1
19	533 05 64-72	DEFLECTOR SIDE OUT (BS222573).....	1
20	533 30 55-55	EXHAUST TUBE, 15HP, LH, B&S, VANG	1
22	533 00 97-96	BRACKET, TRANSAXLE	1
23	533 03 54-97	SCREW, 5/16-18 X .50 WAHHTAP	2
24	533 04 48-11	SCREW, 1/4-20 X .75 WAHHTAP	4
25	533 30 47-09	BRACKET, MUFFLER	1
26	872 11 05-06	BOLT, 5/16-18 X .63 CARRLN	2
28	533 32 09-22	SHIELD, MUFFLER HEAT TWIN	1
29	533 05 52-73	NUT, 5/16-18 HXWDFLLK	2
31	533 31 47-97	OIL SENSOR, B&S TWIN CYLINDER.....	1
41	533 30 44-39	KNOB, THROTTLE CTL MOLD	1
42	533 30 73-62	THROTTLE CONTROL, EURO 18, TWIN	1
44	533 30 84-59	NUT, #10-24 HXHDNYLK	2
57	533 32 13-06	HEAT SHIELD, V/G LT EURO	1

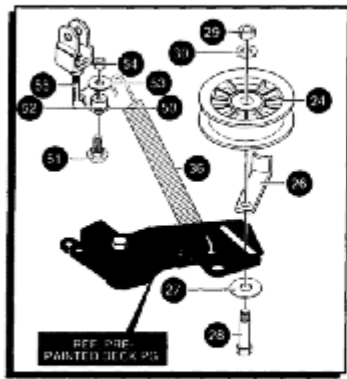
I



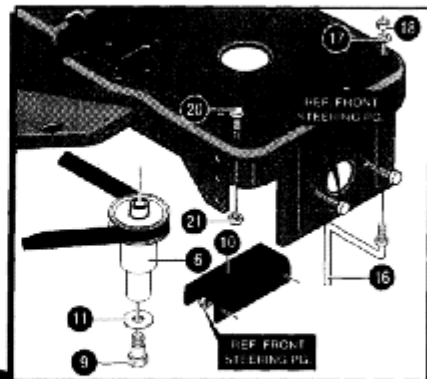


KEY#	PART#	DESCRIPTION	QTY.
1	533 32 51-03	MOWER DECK KIT, 40", IF/EURO	1
2	533 18 00-77	SCREW, 5/16-18 X .75 HHC	1
3	533 00 14-98	NUT, 5/16-18 REGHEXCTRLK	1
4	533 32 64-80	TOE GUARD - MULCHER	1
5	872 11 05-06	BOLT, 5/16-18 X .63 CARRLN	3
6	533 00 14-98	NUT, 5/16-18 REGHEXCTRLK	3
11	533 31 77-05	QUILL, 36140143, W/ZERKS	2
12	533 03 54-98	SCREW, 5/16-18 X .75 WAHTAP	7
13	533 30 03-45	SCREW, 5/16-18 X 1.38 WAHTAP	1
14	533 00 14-98	NUT, 5/16-18 REGHEXCTRLK	4
16	533 31 33-16	BLADE, 40", STD-LIFT 20.32	2
17	533 03 95-73	SCREW, 3/8-24 X 1.00 NYLHHC	2
18	533 00 24-83	WASHER, .39 ID X 1.25 D X .07 BELLVIL	6
23	872 11 05-06	BOLT, 5/16-18 X .63 CARRLN	2
24	533 00 14-98	NUT, 5/16-18 REGHEXCTRLK	2
26	533 31 08-00	CHANNEL DRAWBAR, 40- EURO	1
27	533 05 82-47	NUT, ADJUST	2
28	533 18 00-79	SCREW, 5/16-18 X 1.00 HHC	2
29	533 00 14-98	NUT, 5/16-18 REGHEXCTRLK	2
31	533 31 23-42	BRACKET FRONT	1
32	533 18 00-77	SCREW, 5/16-18 X .75 HHC	2
33	533 00 14-98	NUT, 5/16-18 REGHEXCTRLK	2
36	533 31 70-41	BRACKET, GAGE WHEEL, LH	1
37	533 31 70-18	BRACKET, GUAGE WHEEL, RH	1
38	533 18 00-77	SCREW, 5/16-18 X .75 HHC	4
39	872 11 05-06	BOLT, 5/16-18 X .63 CARRLN	2
40	533 00 14-98	NUT, 5/16-18 REGHEXCTRLK	6
46	533 31 70-17	BRACKET, CHUTE MOUNT	1
47	734 11 52-01	WASHER, FLAT .469 X .92 X .065	2
48	872 11 05-06	BOLT, 5/16-18 X .63 CARR	2
55	533 00 14-98	NUT, 5/16-18 REGHEXCTRLK	2
61	533 32 68-93	BRACE, IDLER SUPPORT 40", 43"	1
62	533 18 00-77	SCREW, 5/16-18 X .75 HHC	2
63	533 04 41-08	NUT, 5/16-18 HWDFLCTRLK	2
70	533 32 21-17	IDLER ARM, 40143146" DECK	1
72	533 30 44-20	BOLT, .500 X 2.15 HSH	1
74	734 11 78-01	WASHER, FLAT .391 X 1.00 X .209	1
78	873 22 06-00	NUT, 3/8-16 HWDFLLK MACK	1

J

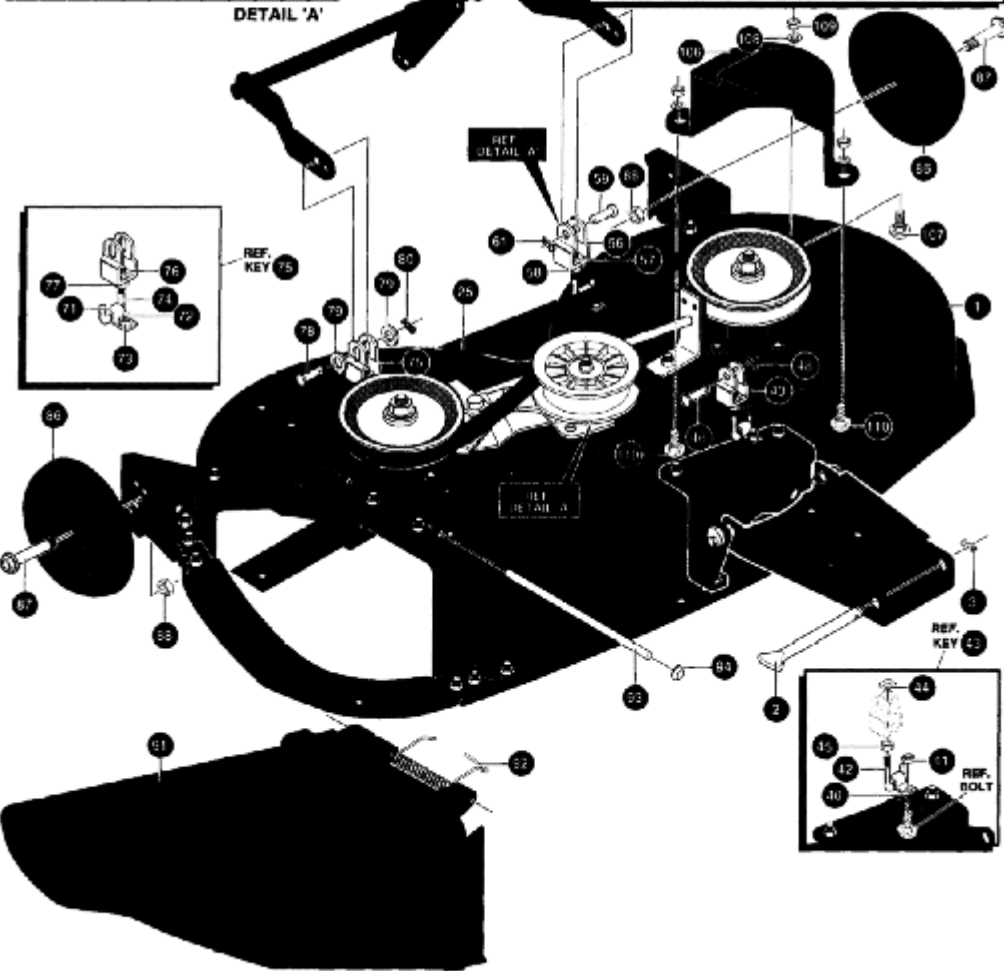


DETAIL 'A'



REF. LIT. LINK PG.

REF. FRONT STEERING PG.



REF. KEY 75

REF. DETAIL A

REF. DETAIL A

REF. KEY 25

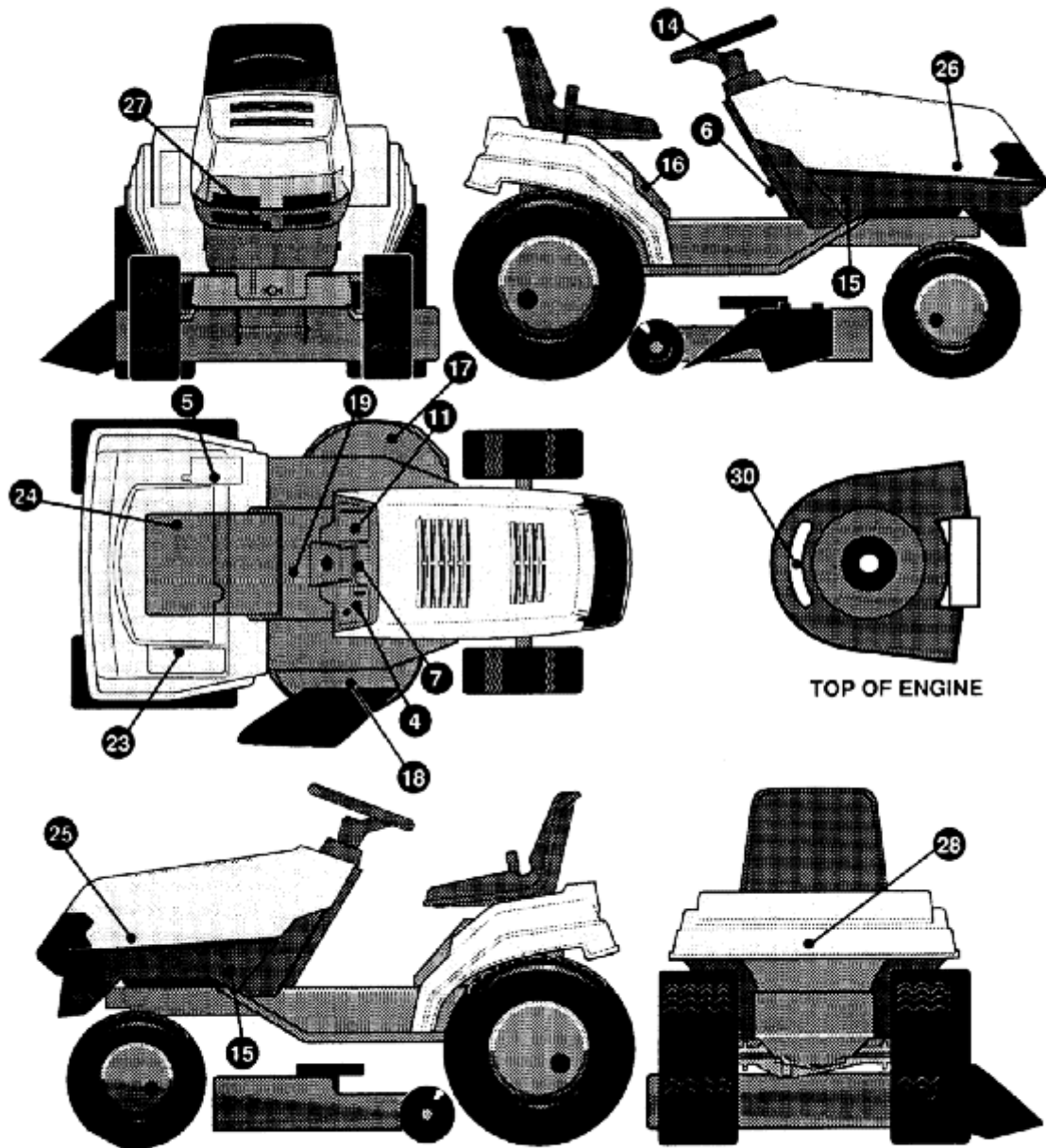
REF. BOLT 44

KEY #	PART #	DESCRIPTION	QTY.
1	533 32 80-51	40" DECK EC, LL, ZERKS, W/O-ROLL	1
2	533 30 29-63	ROD, DRAWBAR	1
3	533 00 82-60	PIN, HAIR .091 DIA X 1.66 LONG.....	1
6	533 30 93-88	PULLEY, ENGINE EL/CL EURO LT	1
10	533 30 90-11	BRACKET, CLUTCH STOP 40/46 E/C	1
16	533 30 04-40	BELT GUIDE	1
17	533 13 85-38	WASHER, REGINTLK .320 X .61 X .03	1
18	533 00 14-98	NUT, 5/16-18 REGHEXCTRLK	1
20	533 18 00-77	SCREW, 5/16-18 X .75	1
21	533 00 14-98	NUT, 5/16-18 REGHEXCTRLK	1
24	533 31 03-26	PULLEY, IDLER BFF 4.00 WIDE	1
25	533 30 51-48	BELT, V 5L 83.0 40~ DECK	1
26	533 00 13-46	RETAINER, BELT	1
27	533 44 63-63	WASHER, FLAT .375 X .88 X .082	1
28	533 05 73-25	BOLT, 3/8-16 X 2.00 CARR	1
29	533 12 03-77	NUT, 3/8-16 REGHEX	1
30	533 12 03-82	WASHER, REGSPTLK .393 X .68 X .10.....	1
36	533 32 93-64	SPRING, 40&43H (t2 TO 20 HP EC)	1
40	533 31 98-68	CLIP, 40/46 HANGER	1
41	533 00 14-98	NUT, 5/16-18 REGHEXCTRLK	1
42	533 30 96-15	ROD, 40" REAR DECK LIFT	1
43	533 30 44-43	CLEVIS	1
44	533 10 95-27	NUT, 1/2-13 .458 SQ	1
45	533 12 02-38	NUT, 1/2-13 HEXJAM	1
46	533 30 03-17	PIN, CLEVIS .375 DIA X .81 LONG	1
48	533 00 82-60	PIN, HAIR .091 DIA X 1.66 LONG.....	1
50	533 31 98-68	CLIP, 40/46 HANGER	1
51	872 11 05-08	CARR. BOLT, 5/16-18 X 1.00.....	1
52	533 05 05-20	SPACER	1
53	734 11 63-01	FLATWASHER, .328 X 1.06 X .062	1
54	533 00 14-98	NUT, 5/16-18 REGHEXCTRLK	1
55	533 31 23-02	ROD, 40" REAR DECK LIFT	1
56	533 30 44-43	CLEVIS	1
57	533 10 95-27	NUT, 1/2-13 .458 SQ	1
58	533 12 02-38	NUT, 1/2-13 HEXJAM	1
59	533 30 03-17	PIN, CLEVIS .375 DIA X .81 LONG	1
61	533 00 82-60	PIN, HAIR .091 DIA X 1.66 LONG.....	1
71	533 31 98-68	CLIP, 40/46 HANGER	1
72	533 18 00-77	SCREW, 5/16-18 X .75 HHC	1
73	533 00 14-98	NUT, 5/16-18 REGHEXCTRLK	1
74	533 30 96-15	ROD, 40" REAR DECK LIFT	1
75	533 30 52-83	CLEVIS, SLOT EURO	1
76	533 10 95-27	NUT, 1/2-13 .458 SQ	1
77	533 12 02-38	NUT, 1/2-13 HEXJAM	1
78	533 30 03-17	PIN, CLEVIS .375 DIA X .81 LONG	1
79	533 12 03-94	WASHER, FLAT .406 X .81 X .065	1
80	533 00 82-60	PIN, HAIR .091 DIA X 1.66 LONG.....	1
86	533 30 26-11	GAUGE WHEEL, EURO 6.00 OD X 1.38 WD	2
87	533 02 37-63	BOLT, .500 X 1.390 HSSH 3/8-16.....	2
88	533 00 14-99	NUT, 3/8-16 REGHXCTRLK	2
91	533 30 44-22	CHUTE DEFLECTOR, 40", 42" & 43"	1
92	533 31 49-75	SPRING, TORSION CHUTE DEFLECTOR	1
93	533 30 44-24	ROD, PIVOT DECK .312 D X 7.25	1
94	533 00 35-35	NUT, PUSH ON CAP .312 OD	1
106	533 32 82-57	GUARD, BELT, LH, PLASTIC	1
107	533 18 00-77	SCREW, 5/16-18 X .75 HHC	1
108	533 12 03-93	WASHER, FLAT .344 X .69 X .065	3
109	533 00 14-98	NUT, 5/16-18 REGHEXCTRLK	3
110	872 11 05-06	BOLT, 5/16-18 X .63 CARR	2



KEY #	PART #	DESCRIPTION	QTY.
1	533 33 19-31	HARNESS, WIRING EURO, B&S VTWIN	1
2	533 05 74-44	TIE, CABLE BLACK NYLON 5.62 LONG	6
3	533 04 14-82	PRESS CLIP, 1.380 LONG .255 ID	3
4	533 05 72-20	SCREW, #12 X .50 PHPNHTAP BLACK	2
5	533 05 74-76	SWITCH, SCREW MOUNT, DP, NC, NO BLK	1
7	533 05 21-51	EDGING	78"
9	533 05 25-72	BULB, HEADLAMP	2
10	533 30 03-34	LIGHT SWITCH, ON/OFF PANEL MOUNT	1
12	533 30 30-64	ASSEMBLY, LIGHT WIRE-1/4 TURN	1
13	533 05 74-44	TIE, CABLE BLACK NYLON 5.62 LONG	3
17	533 32 73-52	NUT, 5/8-8 ACME DELTA FOR BOOT	1
18	533 30 01-94	BOOT, IGNITION SWITCH	1
19	533 32 73-50	KEY, IGNITION DELTA	2
20	533 32 73-55	SWITCH-IGNITION (AFTER FIRE) 3 POSITION	1
24	506 78 88-01	BATTERY, 8 PLATE MAINTENANCE FREE	1
25	533 05 75-51	ROD, BATTERY	1
26	533 30 29-12	ROD, BATTERY TOP .209 DIA	1
27	533 32 52-32	NUT, WING 1/4-20 NYLON	1
28	874 76 04-12	SCREW, 1/4-20 X .75 HHC	2
29	533 27 11-72	NUT, 1/4-20 REGHEXKEPS	2
30	533 05 55-11	WIRE, GROUND, 12.5"	1
31	533 27 11-84	NUT, 5/16-18 HEXKEPS	1
32	533 05 75-47	SWITCH, SEAT	1
33	533 16 05-05	SCREW, 1/4-20 X .38 PHPNHMA	2
34	533 13 84-89	WASHER, EXLK384X.69X.04	1
36	533 05 74-44	TIE, CABLE BLACK NYLON 5.62 LONG	2
40	533 31 09-66	SOLENOID STARTER ISOLATED	1
41	533 18 77-45	SCREW, 1/4-20 X .75 HXSEMMA	2
42	533 12 03-68	NUT, 5/16-24 REGHEX	2
43	533 13 84-85	WASHER, EXLK .320X .61 X .03	2
44	533 27 11-72	NUT, 1/4-20 REGHEXKEPS	1
45	533 00 15-02	NUT, 1/4-20 REGHEXCTRLK	2
46	533 05 74-44	CABLE TIE	1
50	533 30 71-13	CHOKE CONTROL, B&S, TWIN, EURO, LONG	1
56	506 89 15-01	MINIATURE HOUR METER, 4-40V DC	1
61	533 05 77-69	BULB, INDICATOR	3
67	533 30 92-85	SWITCH, ELEC/CLUTACUTATOR	1
68	533 32 61-08	CLUTCH, ELECTRIC	1
69	533 21 56-49	SCREW, 7/16-20X5.50 HHC	1
70	533 31 96-22	BEARING, FLANGED .5101DX.1000DX.56L	1
71	533 12 03-83	WASHER, RESPTLK	1
72	533 30 55-62	KEY SQUARE	1
80	533 31 59-02	AMMETER ASSEMBLY	1

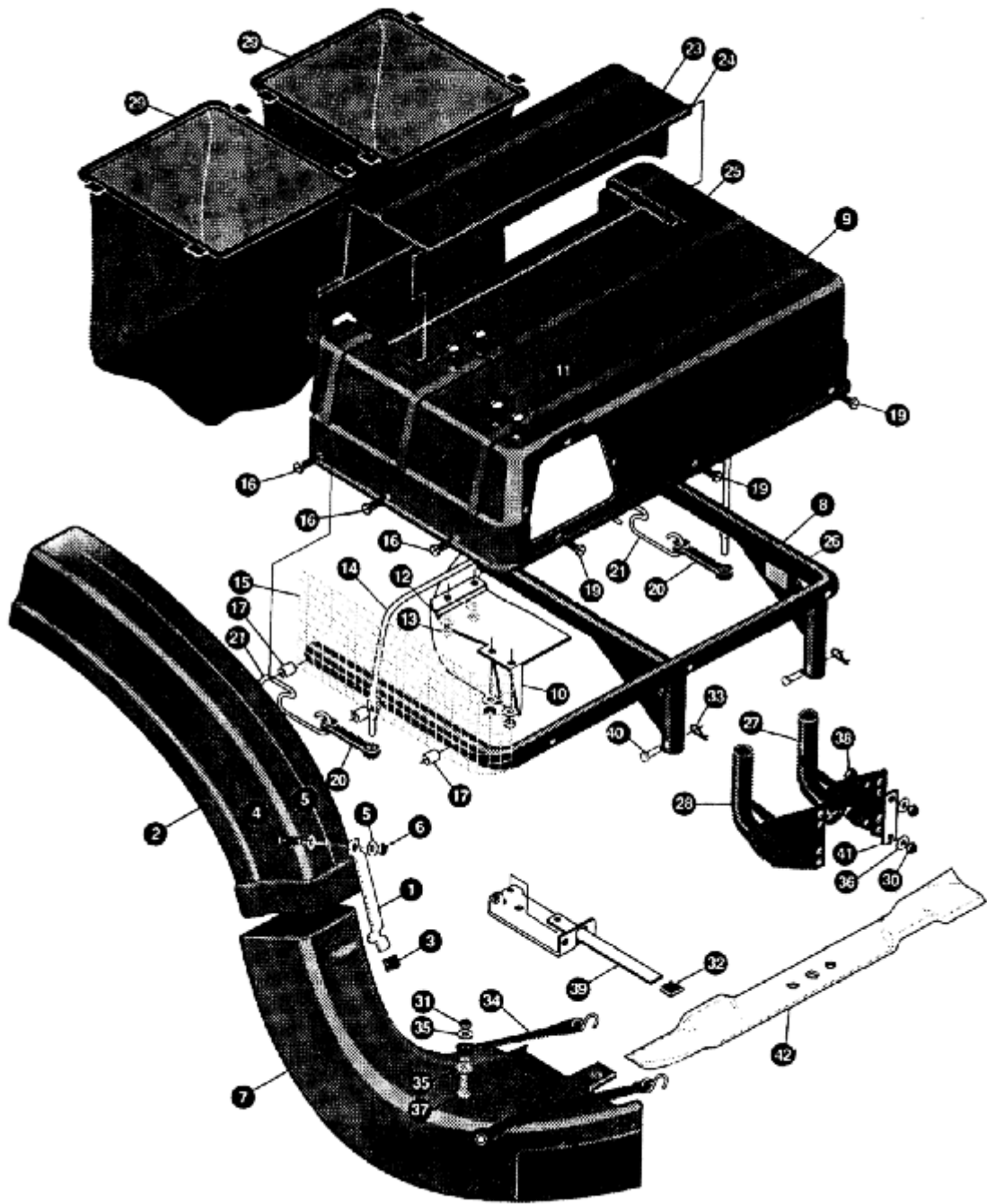
L





KEY #	PART #	DESCRIPTION	QTY.
4	533 33 18-17	DECAL DASH, RH, ISO CH, HR, LS, IS	1
5	533 31 68-10	DECAL, HEIGHT E/C EXPORT	1
6	533 30 78-20	DECAL PARK BRAKE EXPORT	1
7	533 33 20-96	DECAL, DASH OIL, FUEL, ASG, NO CHG.....	1
11	533 33 18-09	DECAL, DASH, LH, ISO, AMM, E/CL, M/CH	1
14	533 33 20-58	DECAL, GUNSIGHT CENT. 3 SPOKE	1
15	533 31 17-30	DECAL, WHEEL 4 STEER HUSQ. BUM.....	2
16	533 31 17-31	DECAL, LAWN TRACTOR SEAT SUPPORT	1
17	533 40 27-00	DECAL, CAUTION DECK LH	1
18	533 40 27-01	DECAL, CAUTION DECK RH	1
19	533 40 26-89	DECAL, CONSOLE SYMBOLIC CAUTION	1
20	533 32 08-45	DECAL, ENTER & EXIT 11/LANG	1
23	533 31 68-16	DECAL, MOTION HYDRO-EXPORT	1
24	533 31 68-61	DECAL, RELIEF VALVE OPERATION	1
25	533 32 07-15	DECAL, HOOD HUSQ. HYDRO LH	1
26	533 32 07-16	DECAL, HOOD HUSQ. HYDRO RH	1
27	533 32 21-74	DECAL, GRILLE, HUSQVARNA	1
28	533 32 21-75	DECAL, REAR FENDER, HUSQVARNA	1

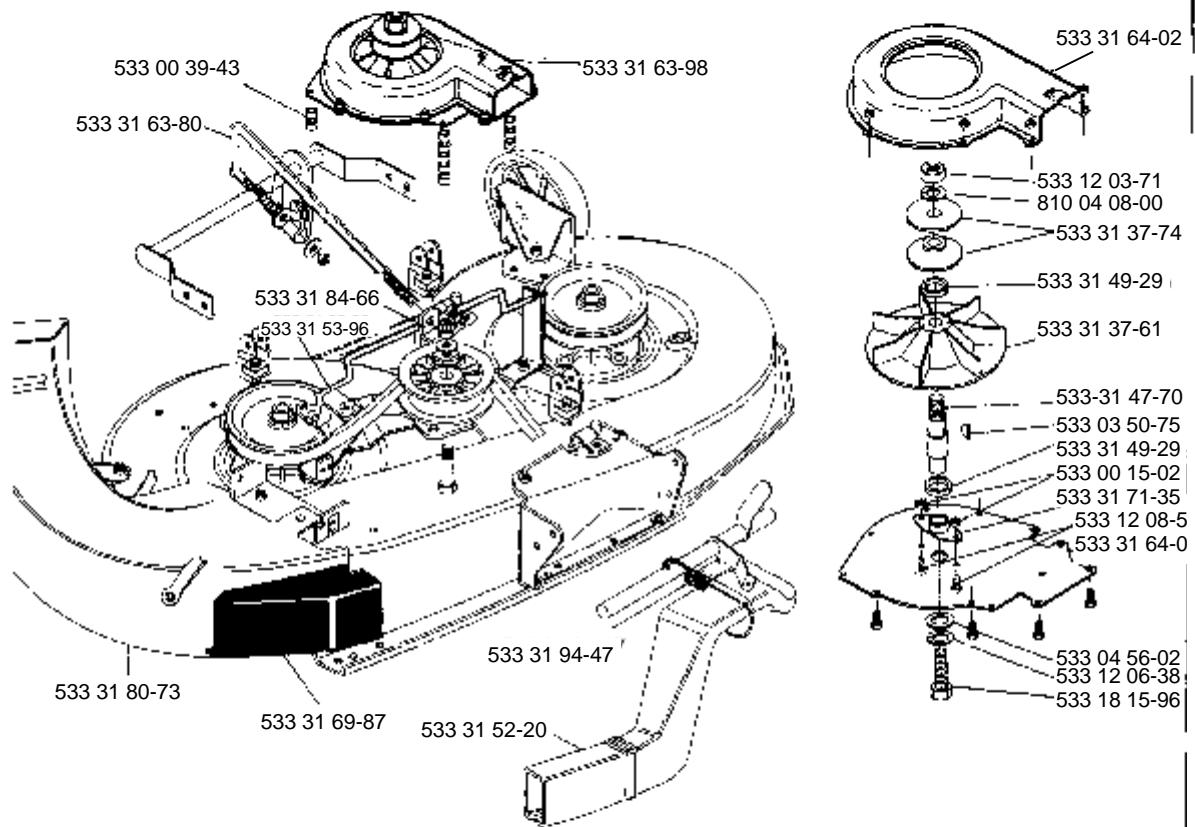
M





KEY #	PART #	DESCRIPTION	QTY.
1	533 32 24-94	LATCH CHUTE.....	1
2	533 32 24-95	CHUTE, UPPER 40&46 BAGGER	1
3	533 04 23-48	GRIP-LEVER GRASS COLLECTOR	1
4	533 12 18-87	SCREW 1/4-20X .75 HHC GR2	1
5	734 11 52-01	WASHER, FLAT .28X1.25X.06.....	2
6	533 00 15-02	NUT,1/4 REGHEXCTRLK	1
7	533 31 80-73	CHUTE, LOWER 40"/43" DECK, MOD	1
8	533 32 29-80	WP TUBE ASSY, SUPPORT (DBL-GST)	1
9	533 30 92-95	TOP COVER ERO BAGGER.....	1
10	533 30 51-97	BAFFLE GRASS CATCHER EURO	1
11	533 05 56-86	SCREW 1/4-20X .63 SLTRMA.BLK	4
12	533 12 03-92	WASHER, FLAT .281X .63X0.65	4
13	533 27 11-72	NUT, 1/4-20 REGHXEXKEPS	4
14	533 30 91-59	MP SUPPORT ROD, COVER.....	1
15	533 30 62-62	SCREEN ERO BAGGER 6.0X 18.25	1
16	533 30 64-87	SCREW, 1/4-20X1.50 HHTAP GR5	3
17	533 30 60-79	SPACER, BAGGER .87X7/16X.060	2
19	533 04 48-11	SCREW 1/4-20X .75 HXWATAP	6
20	533 05 75-05	RUBBER STRAP.....	2
21	533 30 96-48	HOLD DOWN,RUBBER STRAP	2
23	533 30 93-20	TOPP LID PIVIOTING	1
24	533 31 01-94	ROD, GRASS CATCHER PIVOT 953	1
25	533 12 12-23	PIN, COTTER .0625X.75LG	2
27	533 32 35-55	ASSY GRASS CATCHER MT.LH	1
28	533 32 35-56	ASSY GRASS CATCHER MT.RH	1
29	533 32 21-57	BAG, GRASS CATCHER ERC (LONG)	2
30	533 00 14-98	NUT, 5/16-18 REGHEXCTRLK	4
31	533 00 15-02	NUT, 1/4-20 REGHEXCTRLK.....	2
32	533 04 23-48	GRIP-LEVER GRASS COLLECTOR.....	1
33	533 05 61-80	PIN, HAI R .091 DIA X1.62LG	2
34	533 05 75-05	RUBBER STRAP.....	2
35	533 12 03-92	WASHER, FLAT .281X .63X.065	4
36	533 12 03-93	WASHER, FLAT .344X .69X.065	4
37	533 12 19-00	SCREW, 1/4-20X1.00 HHC GR2	2
38	874 78 05-16	SCREW, 5/16-18X1.00 HHC BG8	5
39	533 32 23-20	LEVER ASSY (SHORT)	1
40	533 30 86-19	PIN, CLEVIS .25X1.75	2
41	533 31 51-63	BRKT. PLATE BAGGER	2
42	533 30 90-70	BLADE, 20.32 HIGH LIFT	2

N



MODEL NUMBER 4140H

PART NUMBER	SQUARE	NOTE	PART NUMBER	SQUARE	NOTE	PART NUMBER	SQUARE	NOTE	PART NUMBER	SQUARE	NOTE
506 55 80-01	K		533 05 83-25	F		533 30 25-88	D		533 30 92-35	B	
506 66 42-01	G		533 05 83-26	F		533 30 25-94	D		533 30 92-85	K	
506 78 88-01	K		533 05 83-30	F		533 30 26-11	J		533 30 92-95	M	
506 89 15-01	K		533 05 83-32	F		533 30 28-77	D		533 30 96-15	J	
533 00 06-42	C		533 07 10-73	E		533 30 28-78	D		533 31 00-87	E	
533 00 07-06	C		533 07 11-00	A		533 30 28-97	B		533 31 00-88	E	
533 00 08-45	E		533 10 25-70	E		533 30 29-07	C		533 31 00-94	F	
533 00 13-46	J		533 10 95-27	J		533 30 29-08	C		533 31 00-98	E	
533 00 14-98	ABCDEFI		533 12 02-38	EJ		533 30 29-12	K		533 31 01-79	E	
533 00 14-99	CJ		533 12 03-68	K		533 30 29-63	J		533 31 01-80	E	
533 00 15-02	ABKM		533 12 03-69	C		533 30 30-31	E		533 31 01-87	E	
533 00 24-83	CEI		533 12 03-75	D		533 30 30-64	K		533 31 02-06	E	
533 00 29-68	A		533 12 03-77	EJ		533 30 32-27	F		533 31 02-57	E	
533 00 35-35	J	N	533 12 03-80	DE		533 30 32-28	A		533 31 02-60	F	
533 00 82-60	J	N	533 12 03-82	CDEJ		533 30 32-30	F		533 31 02-61	E	
533 00 97-96	G		533 12 03-83	K		533 30 41-16	D		533 31 02-63	E	
533 01 22-88	D		533 12 03-85	RF		533 30 41-20	D		533 31 02-69	F	N
533 01 22-89	D		533 12 03-92	A		533 30 41-21	U		533 31 02-75	C	
533 01 23-19	D		533 12 03-93	BDEFJ		533 30 41-22	D		533 31 03-26	J	
533 01 23-21	D		533 12 03-94	FJ		533 30 42-17	E		533 31 03-36	E	
533 01 23-25	D		533 12 06-38	B		533 30 42-59	D		533 31 03-56	E	
533 01 24-66	D		533 12 12-22	EF		533 30 42-60	D		533 31 03-84	B	
533 01 25-01	A		533 12 12-23	E		533 30 43-67	E		533 31 05-76	B	
533 02 08-64	A		533 12 18-87	M		533 30 44-20	I		533 31 06-70	C	
533 02 16-82	D		533 12 49-25	CD		533 30 44-22	J		533 31 08-00	I	
533 02 37-63	J		533 13 56-24	J	N	533 30 44-24	J		533 31 08-13	E	
533 02 41-67	D		533 13 84-85	K		533 30 44-39	G		533 31 09-66	K	
533 02 50-86	A		533 13 84-89	G		533 30 44-43	J		533 31 10-66	L	
533 02 51-77	D		533 13 85-38	J		533 30 44-44	C	N	533 31 10-87	B	N
533 02 91-70	E		533 18 00-20	B	N	533 30 44-81	B		533 31 17-30	L	
533 03 52-87	G		533 18 00-77	BCEFIJ		533 30 47-09	G		533 31 17-31	L	
533 03 54-97	ABDEFG		533 18 00-79	DI		533 30 47-29	E		533 31 23-02	J	
533 03 54-98	BDI		533 18 01-34	C		533 30 47-30	F		533 31 23-42	I	
533 03 61-49	F		533 18 16-46	D		533 30 49-67	F		533 31 32-71	E	
533 03 63-11	D		533 18 16-83	D		533 30 51-48	J		533 31 33-16	I	
533 03 63-68	B		533 18 17-09	D		533 30 52-80	C		533 31 35-39	L	
533 03 66-25	C		533 18 77-45	K		533 30 52-83	J		533 31 36-39	D	
533 03 95-73	I		533 21 56-49	K		533 30 53-39	C		533 31 36-41	D	
533 03 96-59	E		533 27 11-72	K		533 30 53-40	C		533 31 36-42	D	
533 04 14-82	K		533 27 11-84	K		533 30 53-81	B		533 31 36-43	D	
533 04 23-48	M		533 27 46-54	D		533 30 54-24	B		533 31 36-45	D	
533 04 41-08	DFI		533 30 01-71	F		533 30 55-20	B		533 31 36-49	D	
533 04 48-11	BDG		533 30 01-94	K		533 30 55-22	F		533 31 36-60	E	
533 04 52-63	A		533 30 03-02	AE		533 30 55-53	G		533 31 44-16	C	
533 04 56-02	DEF		533 30 03-03	A		533 30 55-54	G		533 31 45-11	D	
533 04 58-92	E		533 30 03-10	F		533 30 55-55	G		533 31 47-38	E	
533 04 78-28	G		533 30 03-11	F		533 30 55-62	K		533 31 47-86	E	
533 04 83-06	F		533 30 03-17	J		533 30 57-70	L		533 31 47-97	G	
533 04 99-72	E		533 30 03-28	C		533 30 58-20	A		533 31 48-88	B	
533 05 05-20	J	N	533 30 03-34	K		533 30 58-50	A		533 31 48-89	B	
533 05 09-47	G		533 30 03-45	I		533 30 63-97	B		533 31 49-75	J	
533 05 13-35	BE		533 30 04-40	J		533 30 63-99	B		533 31 52-64	D	
533 05 21-51	AK		533 30 11-40	C		533 30 65-69	C		533 31 52-67	D	
533 05 25-72	K		533 30 12-39	F		533 30 65-70	D		533 31 52-68	D	
533 05 36-52	C		533 30 22-05	F		533 30 66-69	CD		533 31 55-99	G	
533 05 52-00	J		533 30 22-08	F		533 30 68-58	A		533 31 59-02	K	
533 05 52-73	BCFG		533 30 23-03	D		533 30 71-12	C		533 31 66-67	D	
533 05 55-11	K		533 30 23-07	A		533 30 71-13	K		533 31 67-02	C	N
533 05 60-30	BC		533 30 23-14	A		533 30 71-74	G		533 31 68-10	L	
533 05 61-80	J		533 30 23-21	C		533 30 73-62	G		533 31 68-16	L	
533 05 64-72	G		533 30 23-31	A		533 30 73-81	L		533 31 70-17	I	
533 05 69-07	B		533 30 23-35	E		533 30 78-20	L		533 31 70-18	I	
533 05 71-58	C		533 30 23-38	F		533 30 83-84	D		533 31 70-19	C	
533 05 72-20	K		533 30 23-57	F		533 30 83-99	D		533 31 70-41	I	
533 05 73-25	J		533 30 23-60	F		533 30 84-59	G		533 31 77-05	I	
533 05 74-44	K		533 30 23-79	F		533 30 85-23	E		533 31 80-73	M	
533 05 74-76	K		533 30 23-80	F		533 30 87-19	D		533 31 83-04	A	
533 05 75-47	K		533 30 23-83	F		533 30 88-97	A		533 31 93-87	B	
533 05 75-51	K		533 30 24-98	A		533 30 88-98	A		533 31 93-88	B	
533 05 77-69	K		533 30 25-24	A		533 30 90-11	J		533 31 96-22	K	
533 05 82-47	I		533 30 25-83	D		533 30 92-13	F		533 31 98-68	J	

N=New part
 Neues teil
 Nouvelle piece
 Nueva pieza
 Ny detalj

MODEL NUMBER 4140H

PART NUMBER	SQUARE	NOTE	PART NUMBER	SQUARE	NOTE	PART NUMBER	SQUARE	NOTE	PART NUMBER	SQUARE	NOTE
533 32 05-31	D		872 11 05-08	J							
533 32 07-15	L		872 14 05-05	F							
533 32 07-16	L		873 22 06-00	I							
533 32 08-42	L		873 68 04-00	F							
533 32 08-43	L		874 61 06-24	D							
533 32 08-44	L		874 76 04-12	EK							
533 32 08-45	L		874 76 05-32	E							
533 32 09-22	G		874 78 04-14	AB							
533 32 13-06	G		874 78 05-44	D							
533 32 15-16	C		874 78 06-16	D							
533 32 18-10	A		874 78 06-48	C							
533 32 20-68	B										
533 32 20-69	B										
533 32 21-17	I										
533 32 21-74	L										
533 32 21-75	L										
533 32 24-94	M										
533 32 24-95	M										
533 32 27-10	E	N									
533 32 28-59	L										
533 32 29-59	D										
533 32 29-80	M										
533 32 37-31	A										
533 32 37-36	D										
533 32 47-95	A										
533 32 49-36	E										
533 32 50-09	E										
533 32 51-03	I										
533 32 52-32	K										
533 32 61-08	K										
533 32 64-80	I										
533 32 67-69	E	N									
533 32 68-93	I										
533 32 69-25	E										
533 32 71-50	K										
533 32 73-52	K										
533 32 73-55	K										
533 32 80-51	J										
533 32 82-57	J										
533 32 88-20	E	N									
533 32 93-64	J										
533 33 01-07	E	N									
533 33 04-63	B	N									
533 33 08-47	A										
533 33 11-77	A	N									
533 33 11-84	A										
533 33 13-79	A										
533 33 18-09	I										
533 33 18-17	L										
533 33 19-31	K										
533 33 20-58	I										
533 33 20-96	L										
533 33 21-13	A	N									
533 33 21-33	A										
533 33 23-51	J										
533 40 26-89	L	N									
533 40 27-00	L	N									
533 40 27-01	L	N									
533 41 23-49	DF										
533 42 10-51	D										
533 44 63-63	DL										
533 45 63-78	A										
533 45 66-52	E										
533 45 67-22	D										
533 99 53-46	A										
533 99 64-16	C										
734 11 52-01	BM										
734 11 63-01	J										
734 11 65-41	E										
734 11 78-01	I										
872 11 05-06	GIJ										

N-New part
 Neues teil
 Nouvelle piece
 Nueva pieza
 Ny detalj