

LTH130



1.1995

Spare parts

Ersatzteile

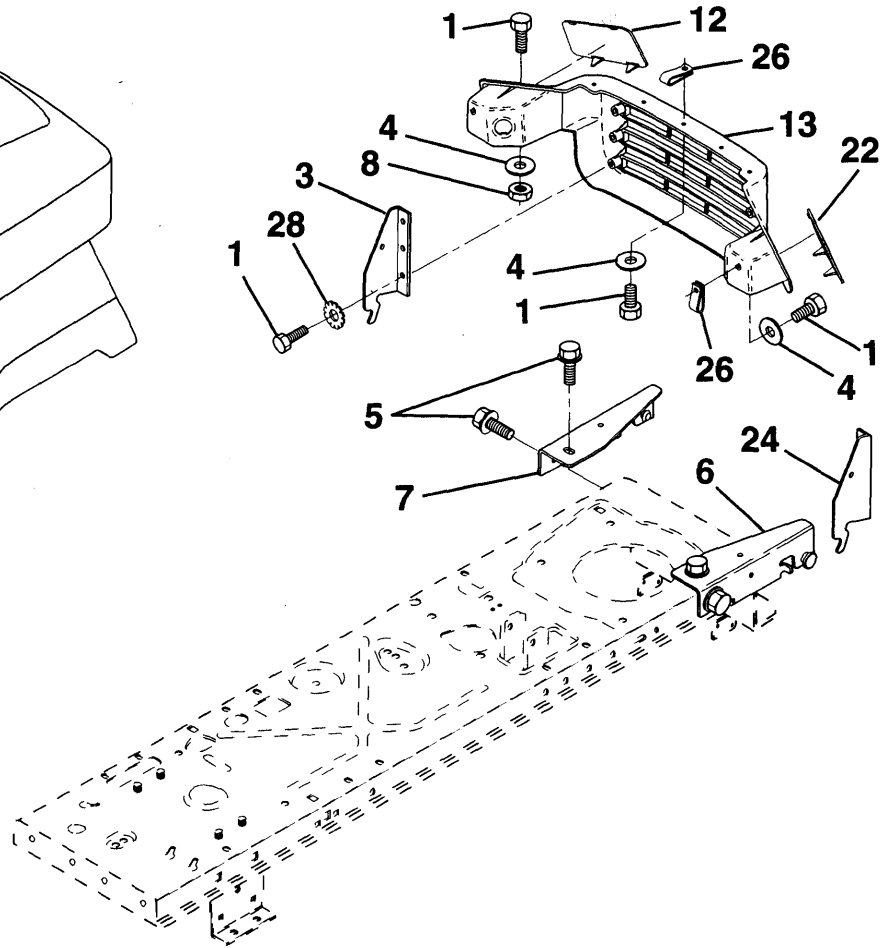
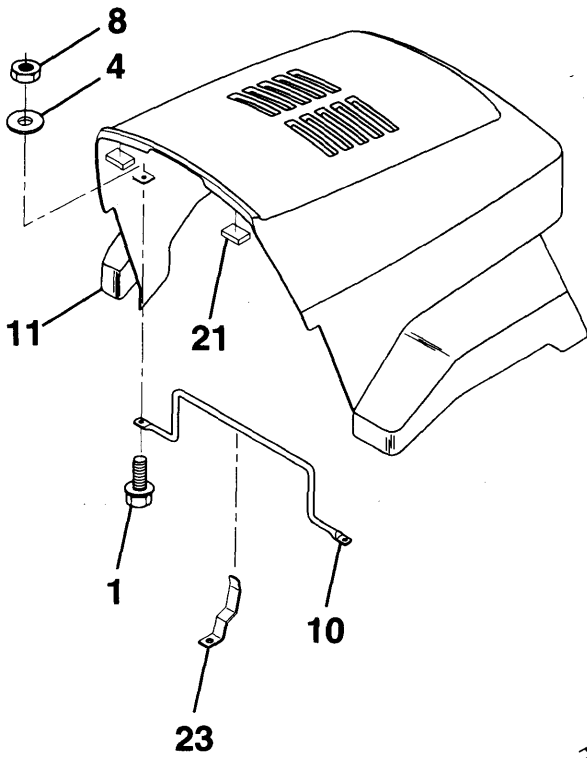
Pièces détachées

Reserve onderdelen

Repuestos

Reservdelar

A



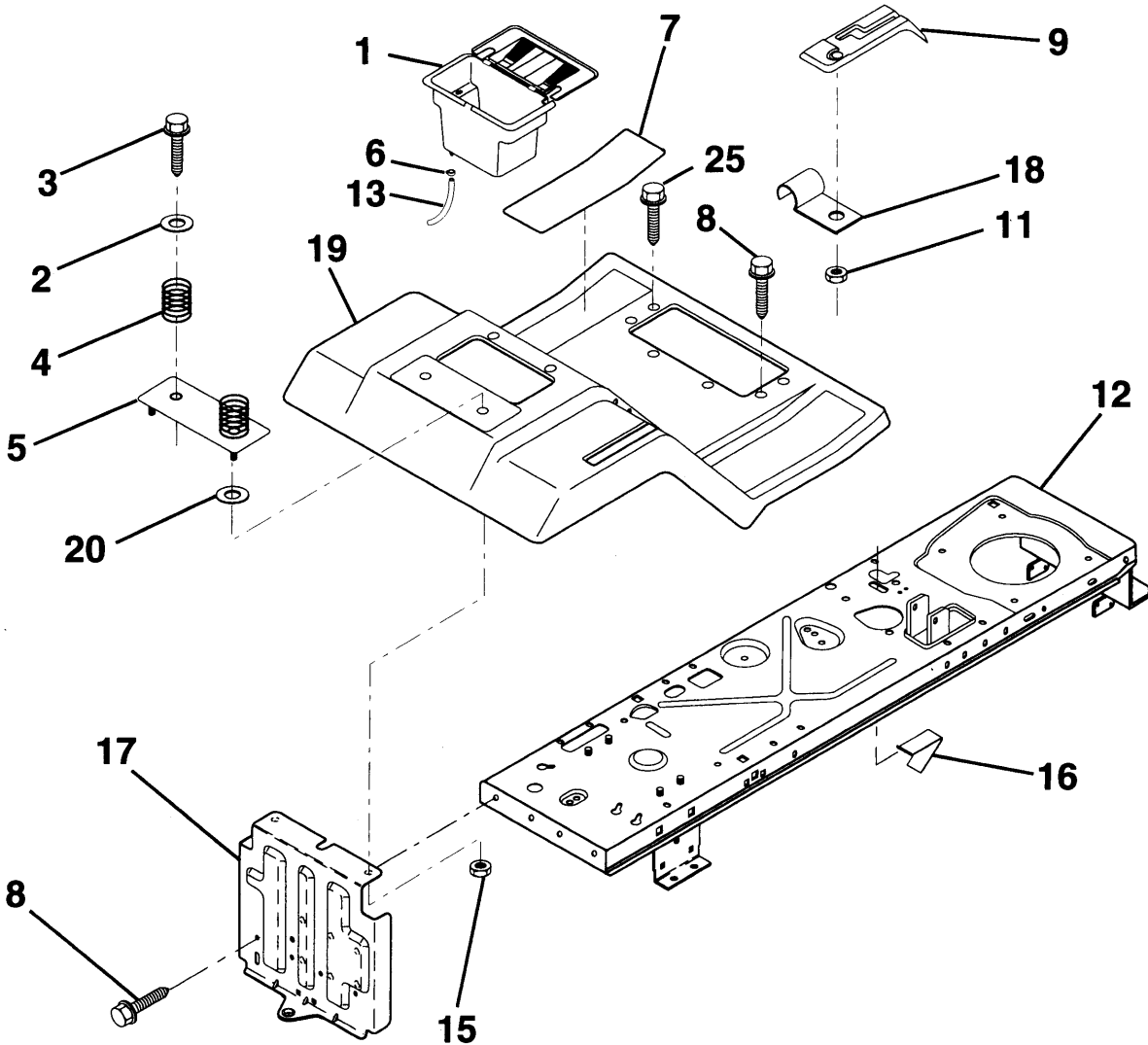
**KEY PART
NO. NO.**

NO.	NO.	DESCRIPTION
1	874 78 04-10	Bolt, Fin Hex 1/4-20x5/8
3	532 12 84-45	Bracket, Pivot Hood LH
4	819 09 10-16	Washer, Flat 1/4
5	817 49 05-12	Screw, Thdrol 5116-28 x 314
6	532 14 00-51	Bracket, Asm. Pivot Hood RH
7	532 14 00-50	Bracket, Asm. Pivot Hood LH
8	873 68 04-00	Nut, Crownlock 1/4-20
10	532 13 08-50	Brace, Hood
11	532 14 01-42	Hood

**KEY PART
NO. NO.**

NO.	NO.	DESCRIPTION
12	532 13 09-86	Lens, LH
13	532 13 09-84	Grille
21	532 12 69-38	Bumper, Hood
22	532 13 09-85	Lens, RH
23	532 13 99-69	Latch, Hood
24	532 14 28-73	Bracket, Pivot Hood RH
26	532 05 29-21	Clip, Tinnerman
28	811 05 04-00	Washer, Lock, Ext. Tooth

HARDWARE SHOWN LARGER FOR EASIER IDENTIFICATION

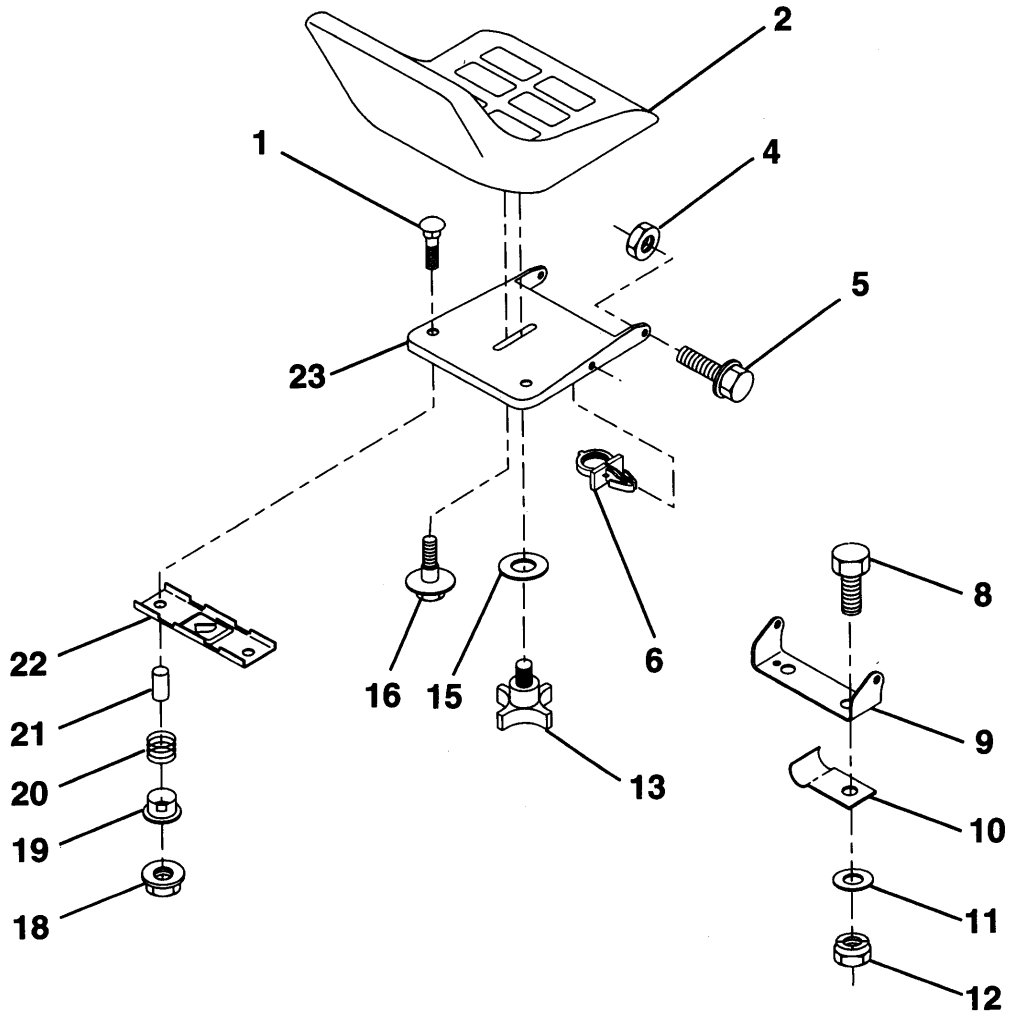


KEY PART NO. NO.	DESCRIPTION
1 532 12 99-65	Case, Battery
2 819 13 20-12	Washer 13/32 x 1 -1/4 x 12 Ga.
3 817 49 06-12	Screw, Hex Wsh. Thrdrol 3/8-16 x 3/4
4 532 12 41-81	Spring, Compression, Seat
5 532 12 51-42	Plate, Asm. Battery
6 532 10 95-96	Clamp, Hose
7 532 12 67-00	Pad, Footrest
8 817 49 05-12	Screw, Thdrol 5/16-18 x 3/4
9 532 14 09-19	Console, Shift Control

KEY PART NO. NO.	DESCRIPTION
11 532 12 43-46	Nut, Self-Threading, Wsher Hd 3/16
12 532 14 51-90	Assembly, Frame
13 532 10 92-38	Tube, Battery Drain
15 873 68 05-00	Nut, Keps 1/4-20 UNC
16 532 14 17-36	Switch, Actuator
17 532 14 07-82	Drawbar
18 532 12 64-70	Clip, Insulated
19 532 14 13-93	Fender/Footrest
20 819 09 14-13	Washer 9/32 x 7/8 x 13 Ga.
25 817 49 05-16	Screw, Hex. Wsh Thdrol 5/16-18 x 1

HARDWARE SHOWN LARGER FOR EASIER IDENTIFICATION

C



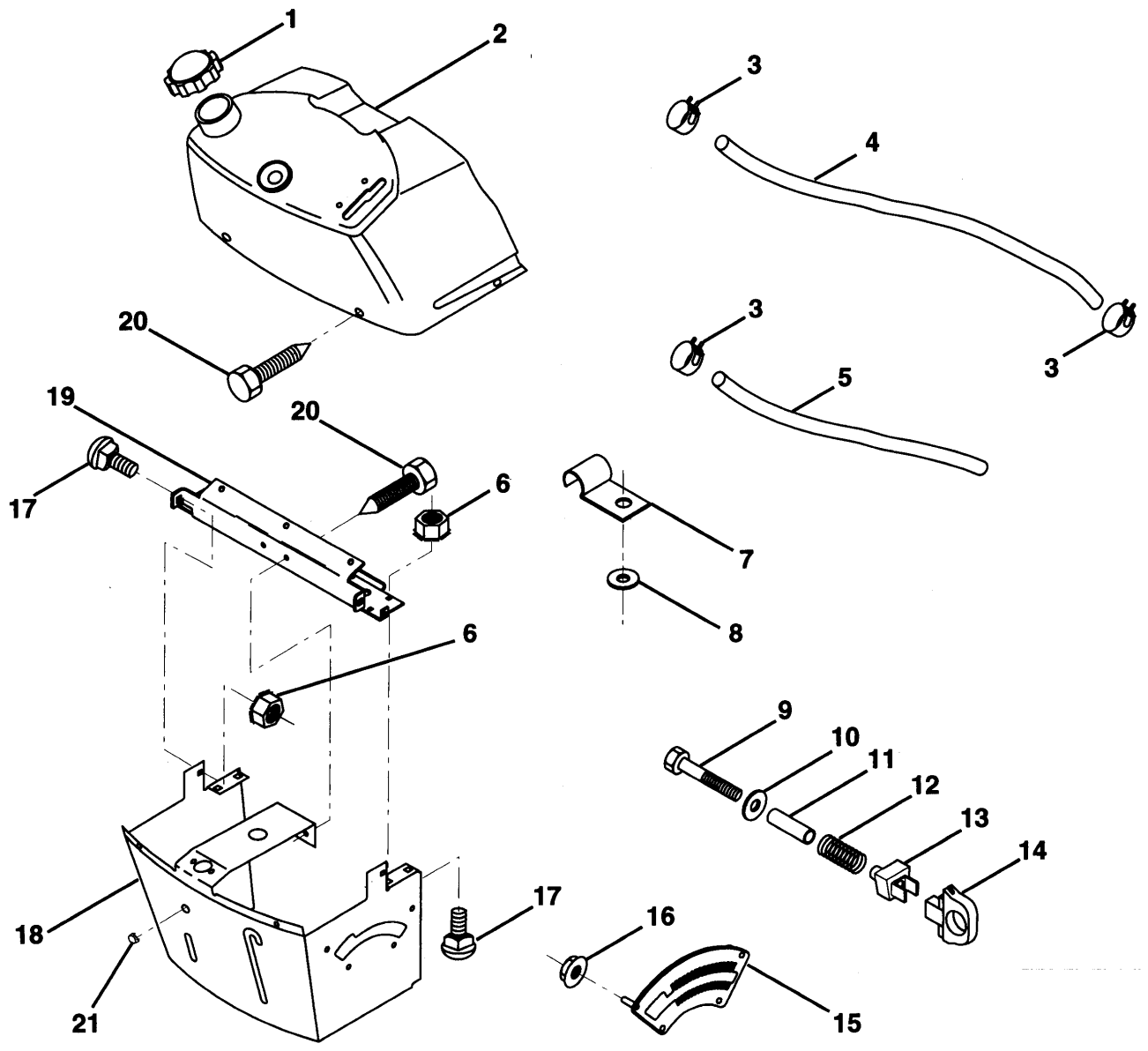
KEY PART

NO.	NO.	DESCRIPTION
1	872 05 04-11	Bolt, Carriage 1/4-20 x 1 -3/8
2	532 12 73-98	Seat
4	873 80 05-00	Nut, Lock, Hex. w/Ins. 5/16-18
5	532 13 98-88	Bolt, Shoulder 5/16-18 UNC
6	532 14 50-06	Clip, Push-in, Hinged
8	874 76 06-16	Bolt, Fin. Hex. 3/8-16 UNC x 1
9	532 14 05-51	Bracket, Pivot Seat
10	532 12 64-71	Clip, Fuel Line
11	819 13 32-10	Washer 12/32 x 2 x 10 Ga.
12	873 80 06-00	Nut, Lock Hex w/Wsh 3/8-16

KEY PART

NO.	NO.	DESCRIPTION
13	532 12 00-68	Knob, Seat
15	819 17 19-12	Washer, 17/32 x 1 -3/16 x 12 Ga.
16	532 12 70-18	Bolt, Shoulder
18	532 12 39-76	Nut, Lock, Hex. Large Flange
19	532 12 12-48	Bushing, Snap
20	532 12 12-50	Spring, Compression
21	532 13 43-00	Spacer, Split 28 Id. x .88 Lg.
22	532 12 12-46	Bracket, Switch Mounting
23	532 14 05-52	Pan, Seat

HARDWARE SHOWN LARGER FOR EASIER IDENTIFICATION

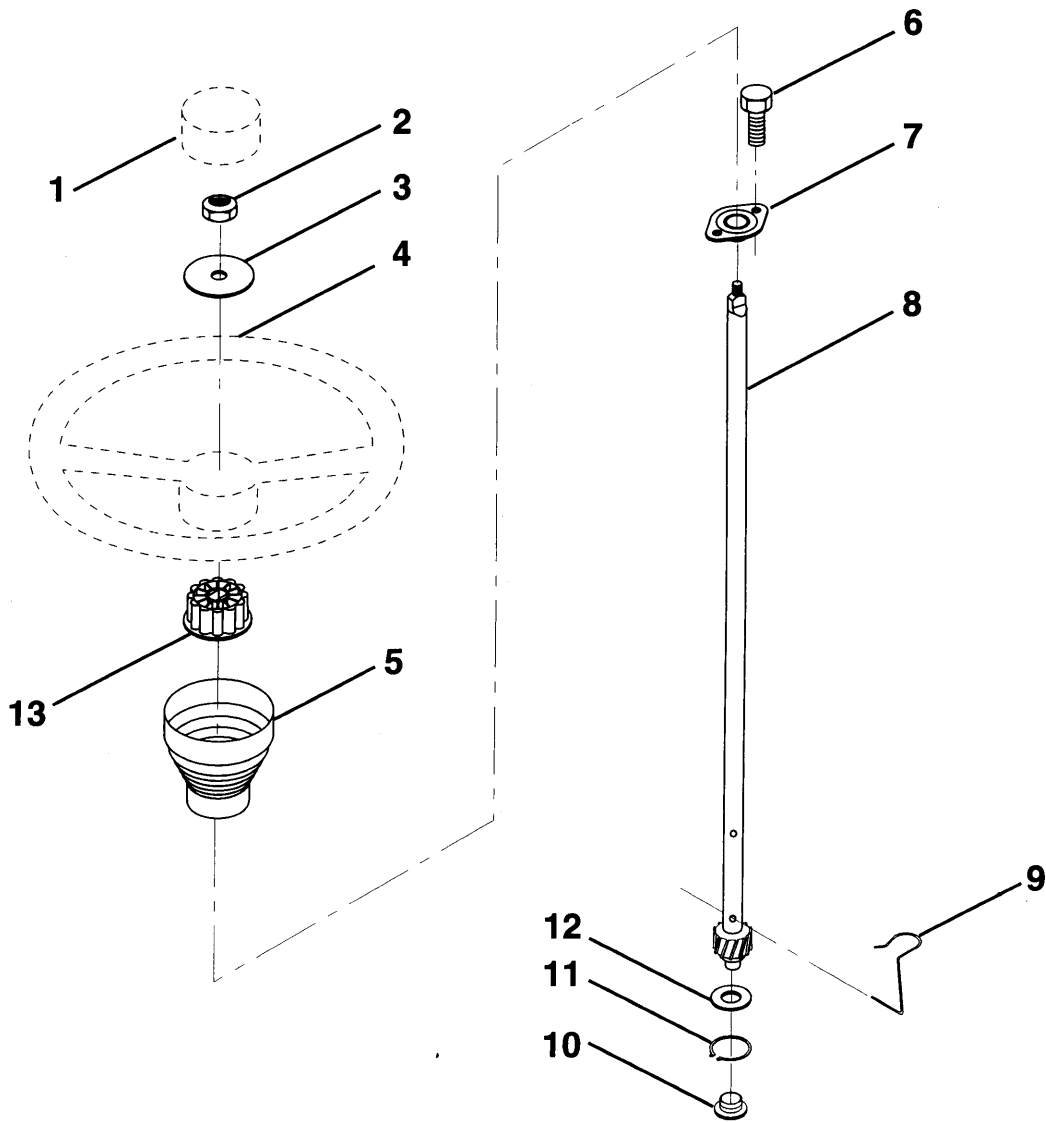


KEY NO.	PART NO.	DESCRIPTION
1	532 14 21-87	Cap, Fuel
2	532 13 83-95	Assembly, Dash & Fuel Tank
3	532 12 34-87	Clamp, Hose
4	532 00 85-44	Line, Fuel
5	532 00 85-48	Line, Fuel
6	873 68 04-00	Nut, Hex, Keps 1/4-20
7	532 12 49-96	Clip, Fuel Line
8	819 09 12-16	Washer 9/32 x 3/4 x 16 Ga.
9	874 76 04-28	Bolt, Hex, Fin 1/4-20 x 1-3/4
10	819 09 14-13	Washer 11/32 x 11/16 x 16 Ga.

KEY NO.	PART NO.	DESCRIPTION
11	532 12 12-49	Spacer, Split
12	532 00 37-20	Spring
13	532 12 64-50	Clip, Height Adjustment
14	532 12 61-15	Knob, Height Stop
15	532 12 20-23	Adjustment, Quadrant Height
16	532 12 43-46	Nut, Self-Threading 3/16-18
17	872 11 04-04	Bolt, Carriage 1/4-20 x 1/2 Gr. 5
18	532 13 07-45	Support, Assembly Dash
19	532 13 47-44	Brace, Cross
20	817 06 04-08	Screw, Self-Tapping 1/4-20 x 1/2
21	532 13 40-14	Plug, Dome, Black

HARDWARE SHOWN LARGER FOR EASIER IDENTIFICATION

E



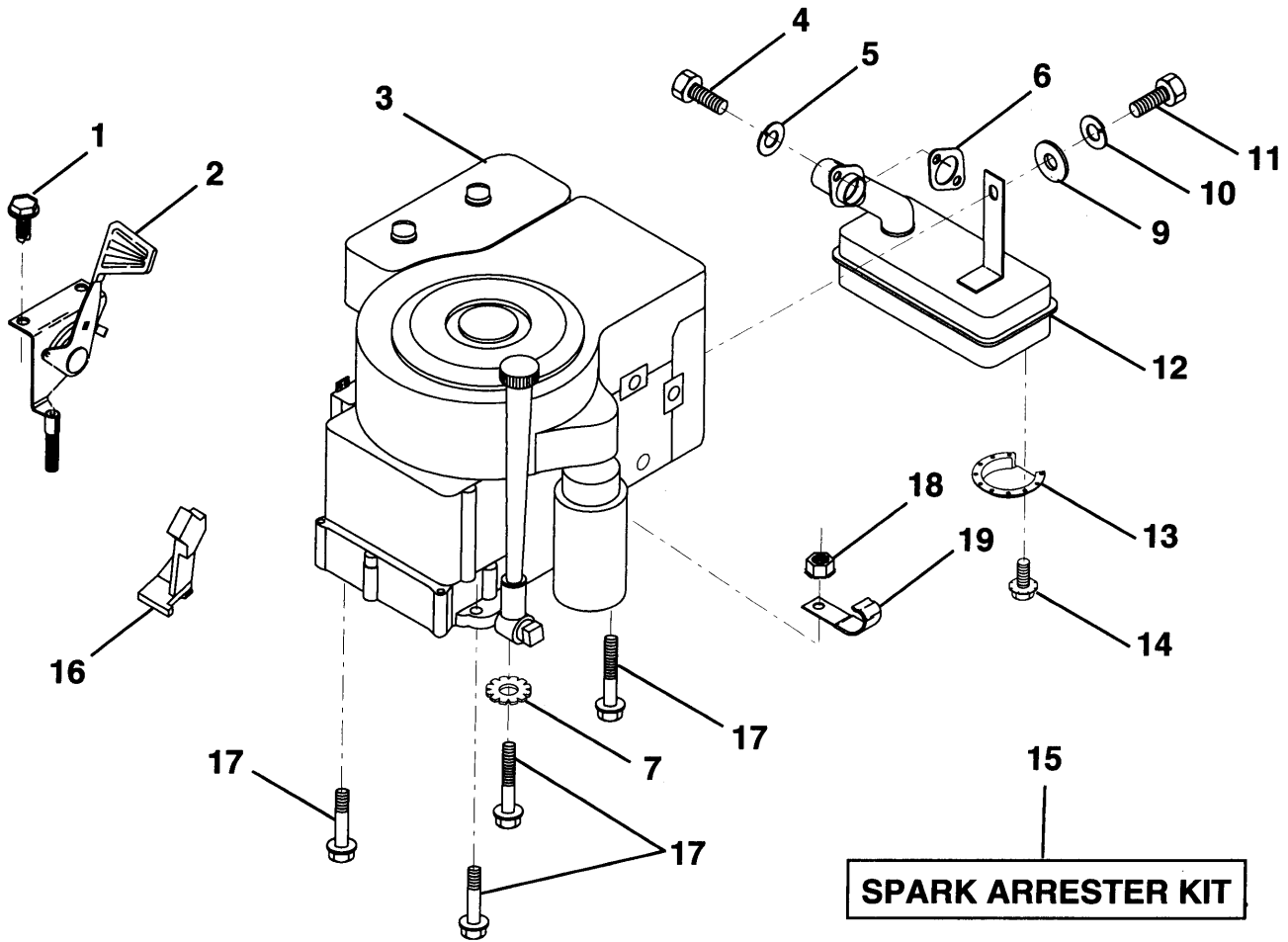
**KEY PART
NO. NO.
NO.**

**DESCRIPTION KEY PART D
NO.**

- 1 532 12 44-16 Insert, Wheel, Steering
- 2 532 12 47-01 Nut, Lock 3/8-24 UNF
- 3 819 13 38-08 Washer 12/32 x 2-3/8 x 8 Ga.
- 4 532 12 44-15 Whee, Steering
- 5 532 12 73-96 Sleeve, Steering
- 6 817 43 10-08 Screw, Hex # 10-16 x 1/2 TY-B

- 8 532 12 36-51 Shaft, Steering
- 9 532 12 42-10 Clip, Steering
- 10 532 12 34-38 Bushing, Lower, Steering
- 11 812 00 00-45 Ring Retaining
- 12 819 21 16-16 Washer 21/32x1 x16Ga.
- 13 532 10 48-20 Adaptor, Wheel, Steering

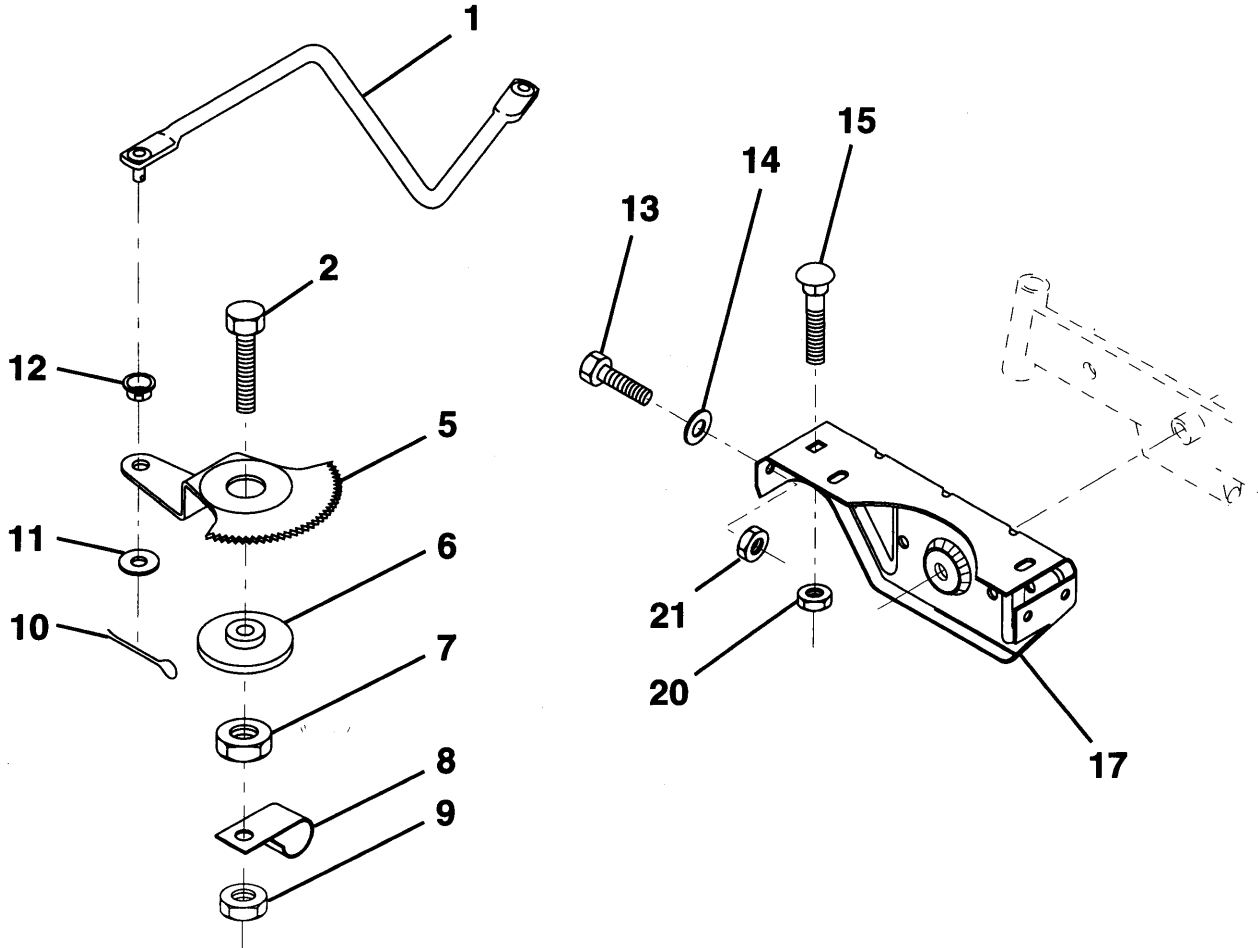
HARDWARE SHOWN LARGER FOR EASIER IDENTIFICATION



KEY NO.	PART NO.	DESCRIPTION	KEY NO.	PART NO.	DESCRIPTION
1	817 06 04-08	Screw, Hex, Thd. Cut 1/4-20 x 1/2	11	-----	Screw (Order from Engine Mfg.)
2	532 13 30-25	Control, Throttle	12	532 13 74-37	Muffer
3	-----	Engine, B&S, Model No. 28M707	13	532 10 13-26	Deflector, Muffer
4	871 07 05-12	Screw, Hex. Hd. Cap 5/16- 18 x 3/4	14	817 03 08-08	Screw, Spiderloc, Hex Hd. #8 x 1/2
5	810 04 05-00	Washer, Lock, Heavy Helical Spring 5/16	15	532 13 71-80	Arrester, Spark (Optional equipment)
6	532 12 55-93	Gasket, Exhaust	16	532 12 79-51	Stop, Throttle
7	811 05 06-00	Washer, Lock Ext. Tooth 3/8	17	817 49 06-24	Screw, Hex Washer Head, Thdrol. 3/8-16 x 1-1/2
9	819 10 12-16	Washer 5/16 x 3/4 x 16	18	873 80 06-00	Nut, Lock, Hex w/Ins. 3/8-16
10	810 04 04-00	Washer, Lock, Heavy Helical Spring 1/4	19	532 12 49-96	Clip, Fuel Line

HARDWARE SHOWN LARGER FOR EASIER IDENTIFICATION

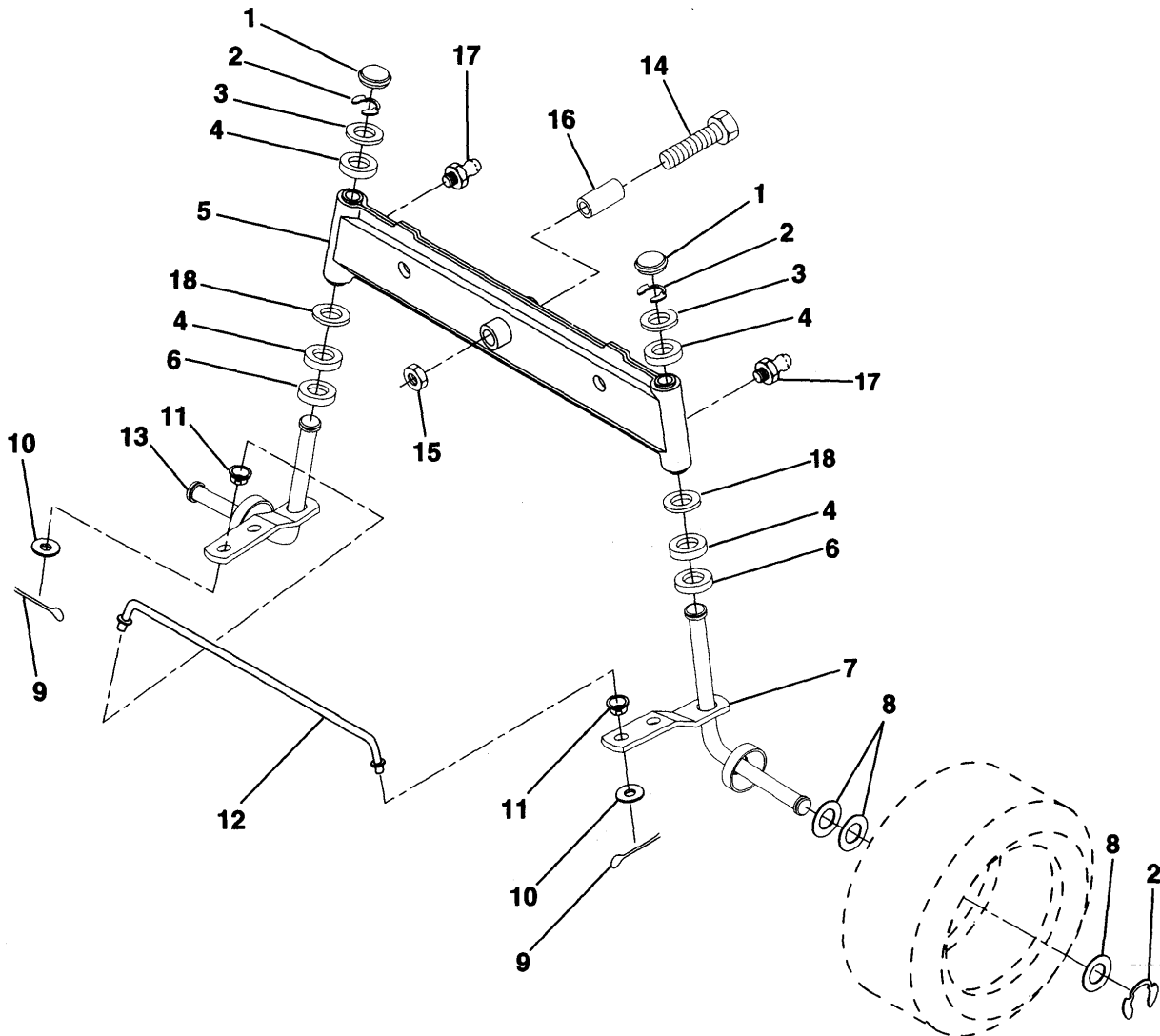
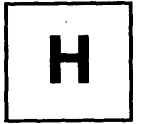
G



KEY NO.	PART NO.	DESCRIPTION
1	532 13 25-66	Link, Drag
2	874 78 08-28	Bolt, Fin Hex 1/2-13 x 1-3/4
5	532 12 19-26	Gear Sector
6	532 12 19-27	Bushing
7	873 03 08-00	Nut, Heavy Hex Top Lock 1/2-13 UNC
8	532 12 64-72	Clip, Insulated
9	873 68 08-00	Nut, Crownlock 3/8-16
10	876 02 04-12	Pin, Cotter 1/8 x 3/4

KEY NO.	PART NO.	DESCRIPTION
11	819 13 13-16	Washer, 13/32 x 13/16 x 16 Ga.
12	532 12 68-47	Bushing
13	874 76 05-12	Bolt, Hex Hd. 5/16-18 UNC x 3/4
14	819 11 14-16	Washer 11/32 x 7/8 x 16 Ga.
15	872 11 06-06	Bolt, Carriage 3/8-16 UNC x 3/4
17	532 13 70-96	Support, Front Axle
20	873 80 06-00	Nut, Lock, Hex w/Wsh. 3/8-16
21	873 80 05-00	Nut, Lock, Hex w/Ins. 5/16-18

HARDWARE SHOWN LARGER FOR EASIER IDENTIFICATION

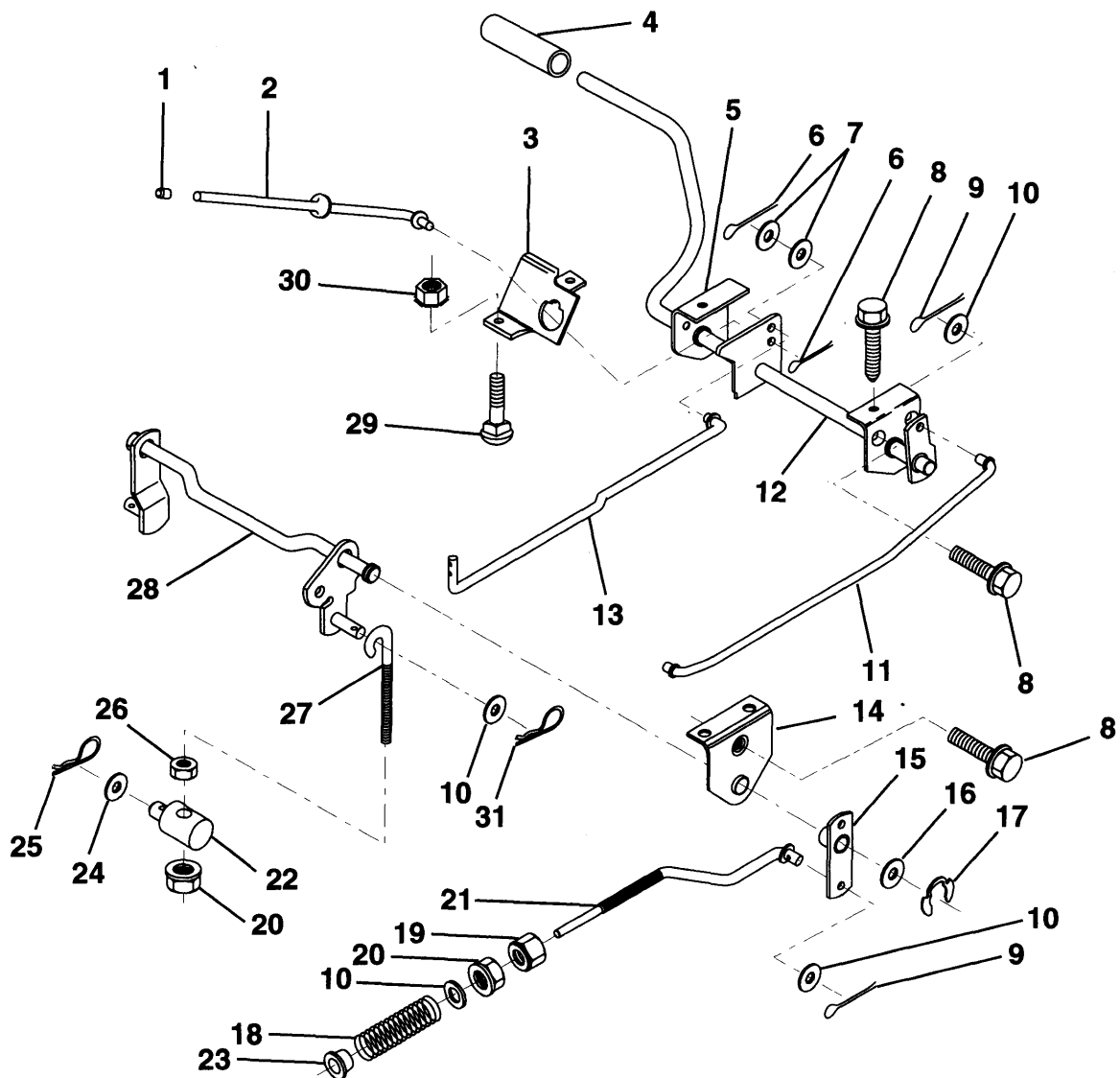


KEY PART NO.	NO.	DESCRIPTION
1	532 12 12-32	Cap, Spindle
2	812 00 00-29	Ring, Clip
3	532 12 17-48	Washer 25/32 x1-5/8 x16 Ga.
4	532 12 49-37	Nyliner
5	532 14 20-33	Axle,Front
6	532 12 49-31	Bearing,Thrust
7	532 13 70-62	Spindle, R.H. Asm.
8	532 12 17-49	Washer 25/32x1-1/4x16Ga.
9	876 02 04-12	Pin,Cotter 1/8x3/4

KEY PART NO.	NO.	DESCRIPTION
10	819 13 13-16	Washer 13/32 x 13/16 x 16 Ga.
11	532 12 68-47	Bushing
12	532 13 04-65	Rod,Tie
13	532 13 70-61	Spindle, L.H. Asm.
14	874 01 10-56	Bolt Hex 5/1-11x3-1/2
15	873 90 10-00	Nut,Lock Flange 5/8-11
16	532 11 04-38	Spacer Bearing Axle
17	532 12 48-36	Fitting Grease
18	819 27 20-16	Washer 27/32xl-1/4xl6Ga.

HARDWARE SHOWN LARGER FOR EASIER IDENTIFICATION

J



KEY PART

NO. NO
NO.

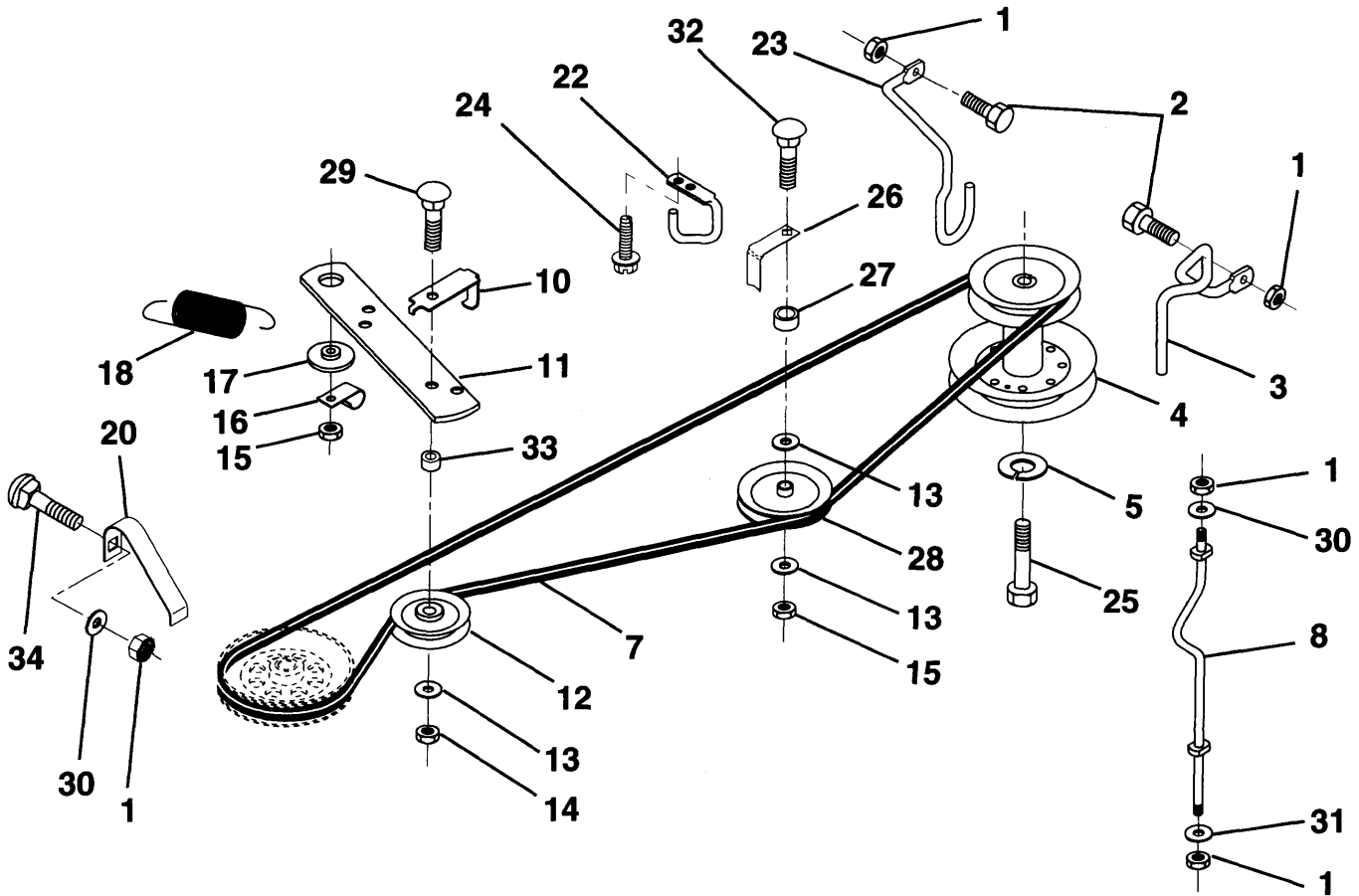
1	532 07 16-73	Cap Plunger
2	532 12 34-36	Rod Parking Brake
3	532 12 34-37	Bracket, Parking Brake
4	532 00 81-56	Cover, Pedal
5	532 12 25-04	Bracket, Clutch/Brake Pedal, L.H.
6	876 02 03-12	Pin, Cotter 3132x314
7	819 13 10-16	Washer 13/32x 5/8x16Ga.
8	817 49 05-08	Screw, Hex. Thdrol. 5/16-18x1/2
9	876 02 04-12	Pin, Cotter 118x314
10	819 13 13-16	Washer 13/32 x 13/16 x 16 Ga.
11	532 12 35-43	Rod, Brake, Front
12	532 13 99-33	Assembly, Clutch/Brake

KEY PART

DESCRIPTION NO.
DESCRIPTION

16	819 25 18-16	Washer 25/32x1-1/8x16Ga.
17	812 00 00-34	Ring, Klip
18	532 10 68-88	Spring, Brake Rod
19	873 35 06-00	Nut, Hex, Jam 3/8-16 UNC
20	873 68 06-00	Nut, Crownlock 3/16-18
21	532 14 44-13	Rod, Brake
22	532 14 45-85	Trunnion, Lift
23	532 12 68-47	Bushing, Link, Drag
24	819 13 20-12	Washer 13/32x1-1/4x12Ga.
25	532 12 49-61	Retainer, Spring
26	873 93 06-00	Nut, Centerlock 3/8-16 UNC
27	532 12 73-69	Link, Threaded
28	532 14 07-76	Assembly, Rear Mower Lift

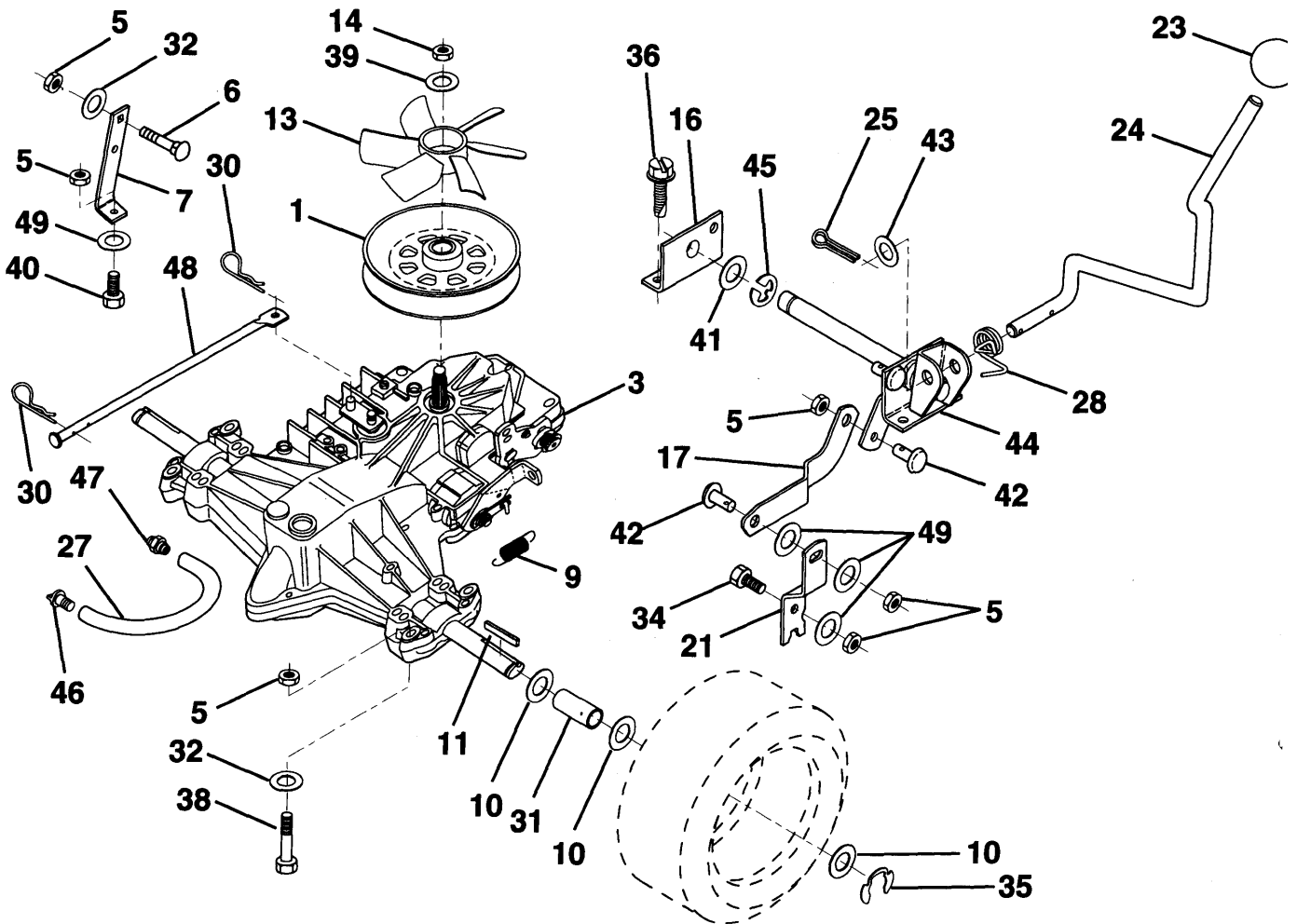
HARDWARE SHOWN LARGER FOREASIER IDENTIFICATION



KEY NO.	PART NO.	DESCRIPTION
1	873 80 05-00	Nut, Lock, Hex. w/Ins. 5/16-18
2	874 76 05-12	Bolt, Hex.Hd 5/16-18x3/4
3	532 14 12-97	Keeper, Belt, Mower Drive, R. H.
4	532 13 80-29	Pulley, Engine
5	810 04 07-00	Washer, Lock 7/16
7	532 14 09-10	Traction, V-Belt Drive
8	532 14 07-85	Keeper Belt R.H. Hydro
10	532 14 07-80	Keeper Belt Ground Drive, Idler
11	532 14 09-11	Arm, Ground Drive Clutch
12	532 12 36-74	Idler, Flat
13	819 13 13-16	Washer 13/32 x 13/16 x 16 Ga.
14	873 93 06-00	Nut, Centerlock 3/8-16 UNC
15	873 68 06-00	Nut, Lock, Hex. whoosh 3/8-16
16	532 12 64-71	Clip, insulated
17	532 12 20-52	Spacer, Retainer

KEY NO.	PART NO.	DESCRIPTION
18	532 13 14-59	Spring, Extension
20	532 14 09-09	Keeper, Belt, L.H.
22	532 12 34-04	Keeper, Belt, Frame, Ground Drive
23	532 14 09-16	Keeper, Belt, Front, L. H.
24	817 72 04-08	Screw, Thd. Cut 1/4-20 x 1/2
25	871 17 07-44	Bolt, Hex., 7/16-20 Gr.5
26	532 14 09-13	Keeper, Belt
27	532 14 09-14	Spacer
28	532 13 91-23	Pulley, V-Idler
29	872 14 06-18	Bolt, Carr. 3/8-16 UNC x 2-1/4
30	819 11 11-16	Washer
31	819 11 12-16	Washer
32	872 14 06-20	Bolt, Carriage
33	532 00 01-60	Sleeve, Pivot
34	872 14 05-06	Bolt, Carriage

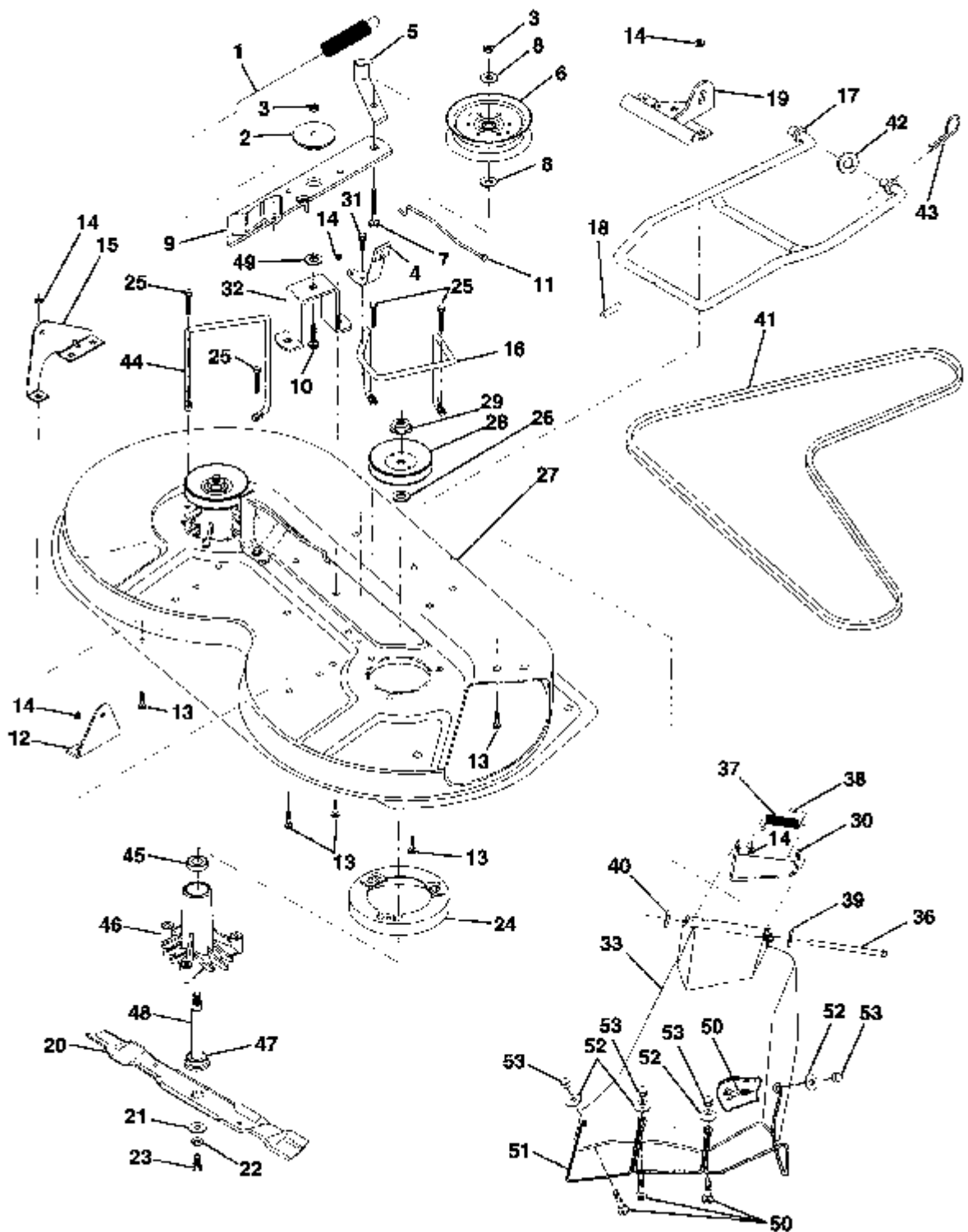
HARDWARE SHOWN LARGER FOR EASIER IDENTIFICATION



KEY NO.	PART NO.	DESCRIPTION	KEY NO.	PART NO.	DESCRIPTION
1	532 14 07-79	Pulley, V-Groove	30	532 12 47-88	Retainer, Spring
3	532 14 06-07	Transaxle, Hydro 0310-0500	31	532 12 11-99	Spacer
5	873 80 05-00	Nut	32	819 11 11-16	Washer
6	872 14 05-06	Bolt, Carriage	34	874 76 05-16	Bolt, Rdhd 5/16-18 x 1
7	532 14 07-74	Strap, Torque	35	812 00 00-01	E-Ring
9	532 11 04-22	Spring, Brake	36	817 72 04-08	Screw, Thd. Cut 1/4-20 x 1/2
10	532 12 17-49	Washer 25/32 x 1-1/4 x 16 Gauge	38	874 76 05-40	Bolt, Hex Head
11	532 12 35-83	Key, Square	39	819 17 19-12	Washer
13	532 14 07-78	Fan, Transaxle, Hydro	40	874 76 05-24	Bolt
14	532 00 92-04	Nut	41	819 21 20-13	Washer 21/32 x 1-1/4 x 13 Gauge
16	532 14 07-63	Support, Shift Handle	42	532 14 07-69	Pin, Pivot
17	532 14 07-67	Link, Shift	43	819 17 12-16	Washer
21	532 14 07-73	Lever, Shift	44	532 14 07-64	Pivot Shaft Assembly
23	532 12 12-74	Knob, Shifter	45	812 00 00-02	E-Ring
24	532 14 07-65	Rod, Shifter	46	532142917	Cap, Vent Hose
25	876 02 04-16	Pin, Cotter	47	532142918	Nipple, Vent Hose
27	532 14 25-64	Hose, Vent	48	532 14 09-12	Actuator, Bypass, Hydro
28	532 14 07-72	Spring, Torsion	49	819 11 12-16	Washer

HARDWARE SHOWN LARGER FOR EASIER IDENTIFICATION

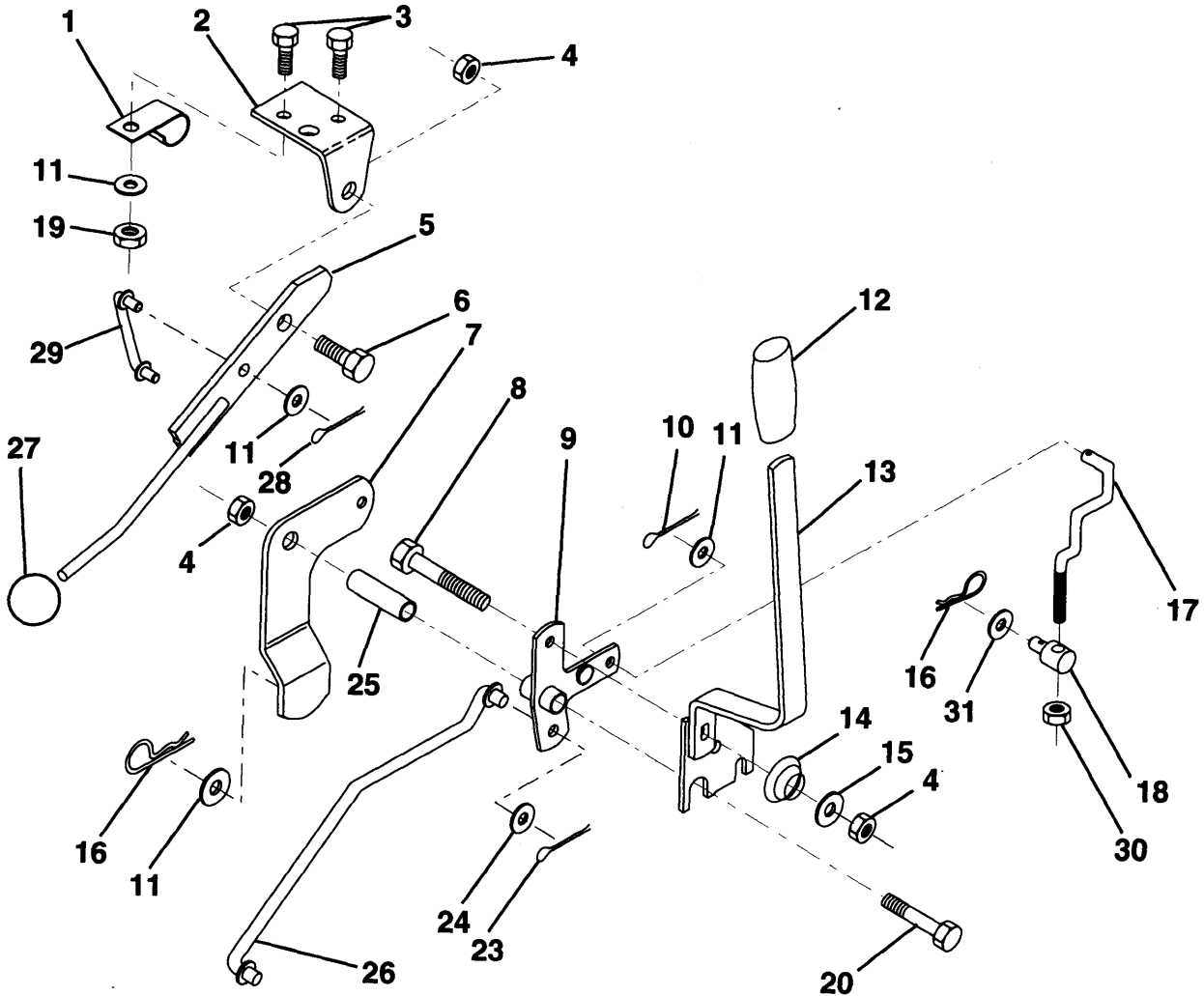
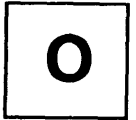
M





KEY NO.	PART NO.	DESCRIPTION
1	532 14 00-64	Spring, Mower Clutch
2	532 12 20-52	Spacer, Retainer
3	873 68 06-00	Nut, Crownlock 3/8-16
4	532 13 08-40	Brake Asm.
5	532 13 12-51	Guide, Belt Idler
6	532 12 13-16	Pulley, Flat Idler
7	872 11 06-16	Bolt, Carr. 3/8-16 x 1-3/4 Gr. 5
8	819 13 14-10	Washer 13/21 x 7/8 x 10 Ga.
9	532 12 77-44	Arm Asm., Idler Mower
10	872 14 06-10	Bolt, Carriage 3/8-16 x 1-1/4
11	532 13 08-41	Rod, Brake
12	532 12 73-56	Bracket, Lift R. H. Rear
13	872 14 05-06	Bolt, Carriage 5/16-18 x 3/4
14	873 68 05-00	Nut, Crownlock 5/16-18
15	532 12 73-57	Bracket, Lift L. H. Rear
16	532 14 00-93	Keeper, R. H.
17	532 12 85-08	Link, Asm. Mower Stabilizer
18	532 12 85-11	Pin, Drive
19	532 12 73-80	Bracket, Asm. Front
20	532 13 84-96	Blade Hi Lift
21	532 14 02-96	Washer, Hard
22	810 03 06-00	Washer, Lock 3/8
23	532 85 08-57	Bolt 3/8-24 x 1-1/4 Gr. 8
24	532 14 03-29	Stripper
25	532 13 87-76	Screw Thdrol Hex Hd
26	532 12 99-63	Washer .150 Thk.
27	532 12 99-83	Deck Assembly
28	532 12 92-07	Pulley, Mandrel
29	532 13 72-66	Nut, Flangelock 9/16
30	532 13 66-31	Bracket, Asm. Deflector
31	817 49 05-08	Screw, Hex Wsh. Thdrol. 5/16-18 x 1/2
32	532 12 20-51	Arm, Support Idler Mower
33	532 13 15-60	Deflector
36	532 12 19-80	Rod, Hinge
37	532 12 37-13	Spring, Torsion Deflector
38	532 10 53-04	Cap, Sleeve
39	819 11 10-16	Washer 11/32x5/8x16Ga.
40	532 11 04-52	Pushnut
41	532 13 12-64	V-Belt
42	819 17 16-16	Washer 11/32 x 5/8 16 Ga.
43	532 12 46-60	Retainer, Spring
44	532 14 06-08	Keeper, L. H.
45	532 11 04-85	Bearing
46	532 12 87-74	Housing Mandrel Vented
47	532 12 98-95	Bearing
48	532 13 76-45	Shaft, Mandrel (Includes Key # 47)
49	532 13 39-43	Washer Hardened
50	532 14 59-89	Bolt, Carriage M5 x 0.8 x 16
51	532 13 63-83	Guard, Deflector, Mower TUV
52	734 11 46-01	Washer 7/32 x 7/16 x 18
53	532 14 59-90	Nut, Acorn M5 x 0.8
--	532 13 07-94	Mandrel Asm. (Includes Key No.'s 22-23, 26, 29 and 45-48)

HARDWARE SHOWN LARGER FOR EASIER IDENTIFICATION

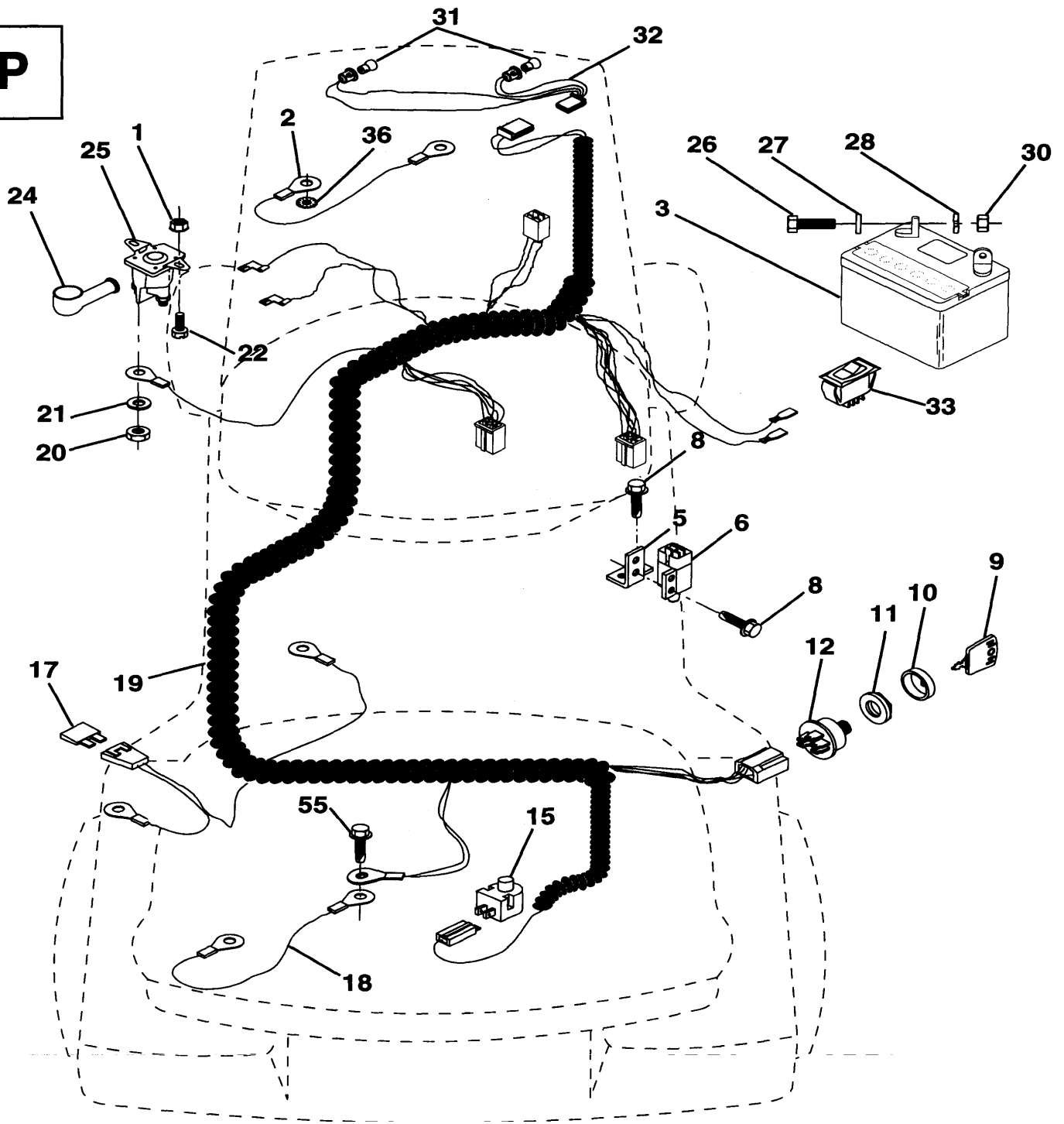


KEY NO.	PART NO.	DESCRIPTION
1	532 12 64-70	Clip, Insulated
2	532 12 20-18	Bracket, Mower Clutch
3	874 78 04-08	Bolt, Fin. Hex 1/4-20 UNC x 1/2
4	873 68 06-00	Nut, Crownlock 3/8-16
5	532 14 51-87	Assembly, Clutch Lever
6	532 10 64-51	Bolt, Shoulder
7	532 13 53-71	Assembly, Mower Clutch Arm
8	874 76 06-36	Bolt, Hex 3/8-16 UNC x 2-1/4
9	532 12 19-30	Assembly, Bellcrank Lift
10	876 02 04-12	Pin, Cotter 118x314
11	819 13 13-16	Washer 13/32 x 13/16 x 16 Ga.
12	532 12 20-27	Grip, Handle
13	532 13 93-52	Assembly, Lift Handle
14	532 12 34-96	Spring, Compression
15	819 13 12-12	Washer 13/32 x 3/4 x 12 Ga.

KEY NO.	PART NO.	DESCRIPTION
16	532 12 49-61	Retainer, Spring
17	532 12 73-59	Link, Front Lift
18	532 14 20-28	Trunnion, Threaded 3/8-16
19	873 68 04-00	Nut, Crownlock 1/4-20
20	874 76 06-44	Bolt, Fin. Hex 3/8-16 UNC x 2-3/4
23	876 02 04-16	Pin, Cotter 1/8x1
24	819 17 16-12	Washer 17/32 x 1 x 12 Ga.
25	532 12 19-33	Tube, Spacer
26	532 14 14-70	Rod, MowerLift
27	532 12 14-66	Knob
28	876 02 03-12	Pin, Cotter 3/32x3/4
29	532 13 16-55	Link, Mower Clutch
30	873 35 06-00	Nut, Hex Jam 3/8-16x1.30
31	819 13 20-12	Washer 13/32 x 1-1/4 x 12 Ga.

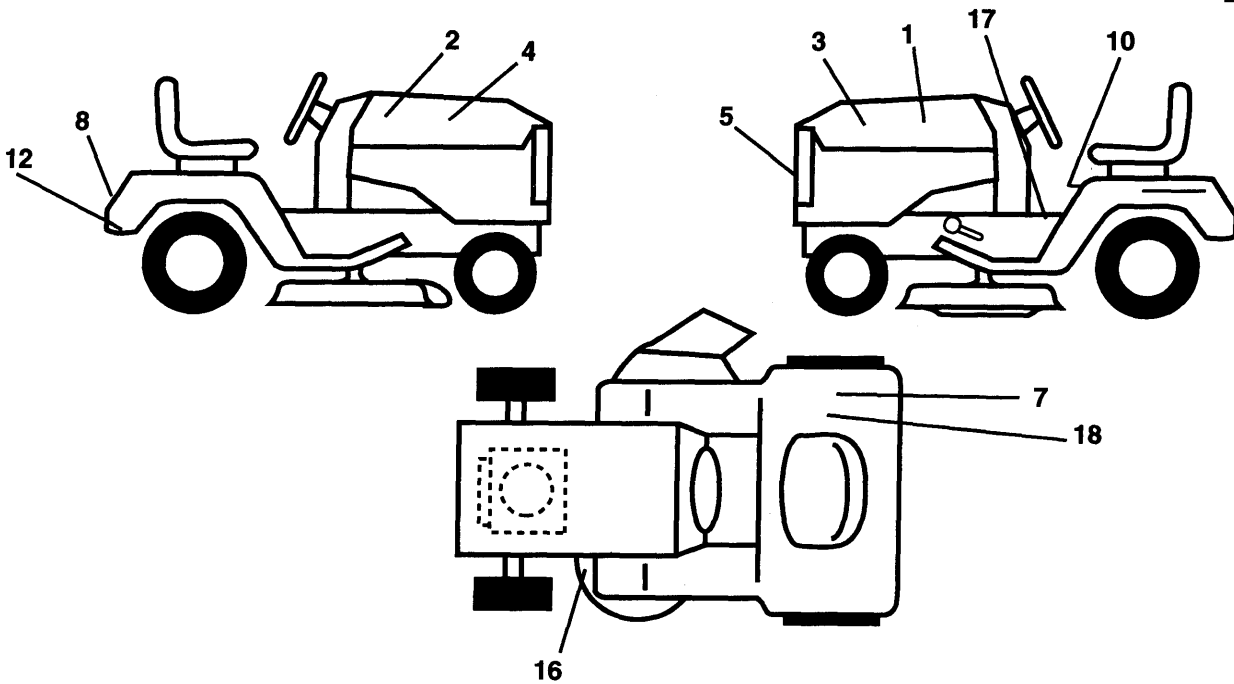
HARDWARE SHOWN LARGER FOR EASIER IDENTIFICATION

P



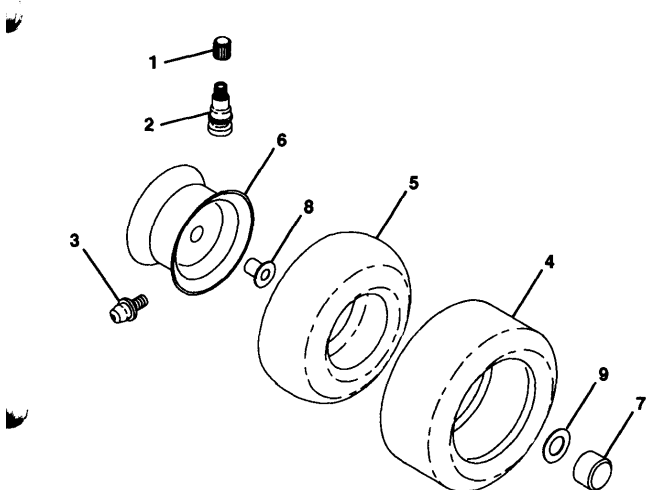
KEY PART NO.	NO.	DESCRIPTION	KEY PART NO.	DESCRIPTION
1	873 64 04-00	Nut, Hex, Keps 1/4-20	20	873 35 04-00 Nut, Hex, Jam 1/4-20
2	532 10 84-23	Assembly, Cable	21	810 09 04-00 Washer, Lock 1/4
3	532 14 49-24	Battery	22	874 78 04-08 Bolt, Hex, Fin. 1/4-20 UNC x 1/2 Grade 5
5	532 10 82-36	Bracket, Switch	24	532 13 15-63 Cover, Terminal
6	532 10 95-53	Switch, Interlock, 4 Terminal	25	532 14 57-63 Solenoid
8	817 02 10-08	Screw, Hex Head, Tapping #10-24 x 1/2	26	874 76 04-12 Bolt, Hex Head 1/4-20 UNC x 3/4
9	532 14 04-01	Key, Steel Delta	27	819 09 10-16 Washer 9/32 x 5/8 x 16 Gauge
10	532 14 12-26	Cover, ignition Key	28	810 04 04-00 Washer, Lock 1/4
11	532 14 04-00	Nut, ignition	30	873 22 04-00 Nut, Hex, Fin. 1/4-20 UNC
12	532 14 49-21	Switch, ignition	31	532 00 41-52 Bulb, Light
15	532 12 13-05	Switch, Plunger	32	532 14 28-81 Harness, Light
17	532 10 88-24	Fuse	33	532 11 07-12 Switch, Light
18	532 12 83-53	Assembly, Cable	36	810 04 04-00 Washer, Lock, Internal Tooth 1/4
19	532 14 60-64	Harness, ignition	39	532 14 17-35 Bracket, Switch Clutch
			55	817 49 05-08 Screw, Thdrol 5/16-18 x 1/2
			70	532 14 04-13 Harness, Engine

R

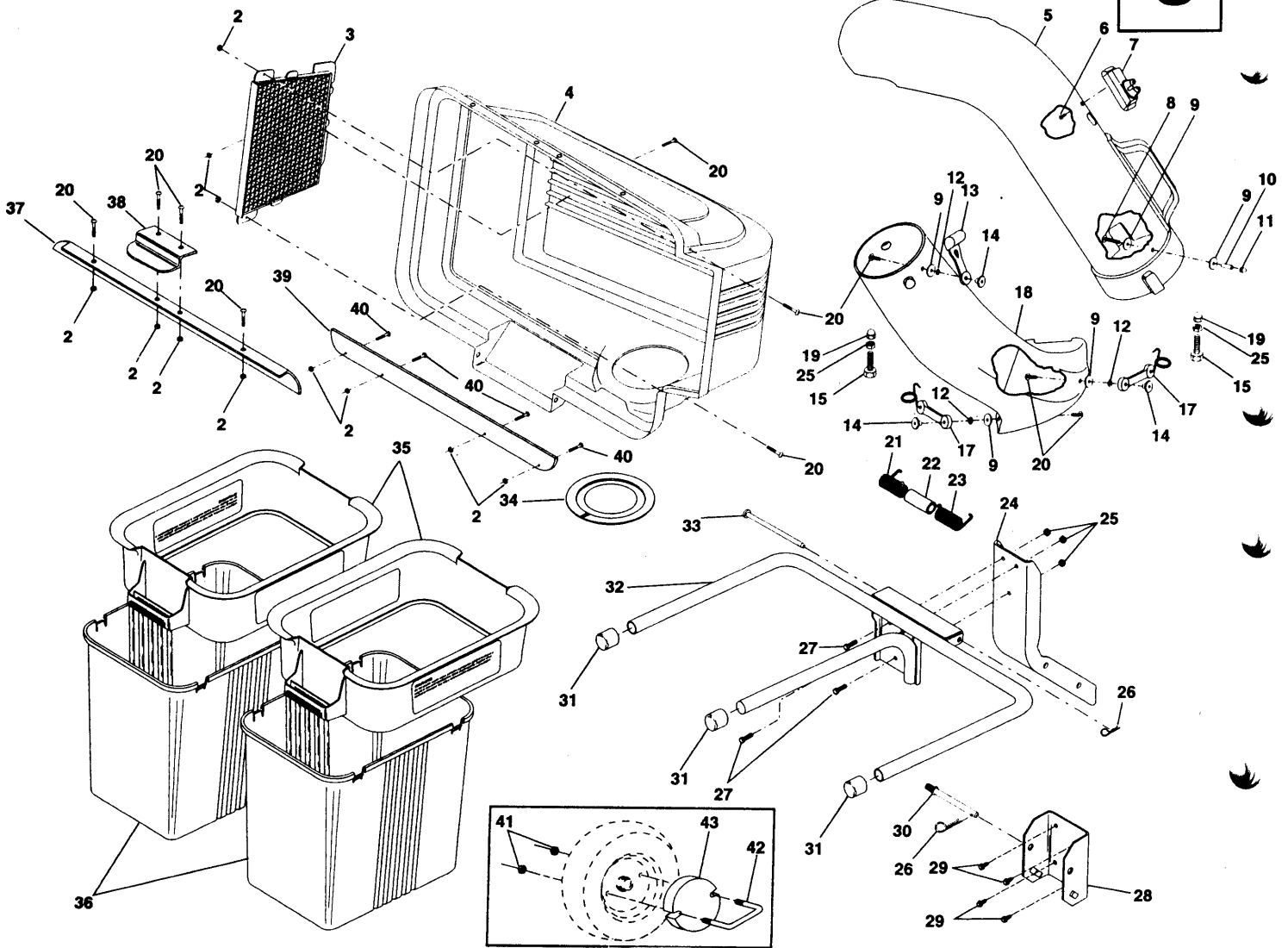


KEY NO.	PART NO.	DESCRIPTION
1	532 14 02-06	Decal, Hood, L. H., Husqv.
2	532 14 02-05	Decal, Hood, R. H., Husqv.
3	532 14 12-81	Decal, Hood, L. H.
4	532 14 12-80	Decal, Hood, R. H.
5	532 14 02-13	Decal, Logo, Grill
7	532 12 61-87	Decal, 100 DBA
8	532 13 15-82	Decal, Logo, Fender
16	532 13 68-30	Decal, V-Belt Sch.

WHEELS & TIRES



KEY NO.	PART NO.	DESCRIPTION
1	532 05 91-92	Cap, Valve
2	532 06 51-39	Stem, Valve
3	532 12 49-57	Fitting, Grease (Front Wheels Only)
4	532 13 74-22	Tire, Front
4	532 13 27-03	Tire, Rear
5	532 05 99-04	Tube, Front (Optional Service Items Only)
5	532 00 81-34	Tube, Rear (Optional Service Items Only)
6	532 14 25-37	Rim, Front
6	532 14 04-53	Rim Rear
7	532 10 47-57	Cap Hub, Axle
8	532 12 49-59	Bearing, Flange
9	532 12 17-48	Washer 25/32 x 1 -5/8 x 16 Ga.



KEY NO.	PART NO.	DESCRIPTION	KEY NO.	PART NO.	DESCRIPTION
2	532 06 91-80	Locknut # 10-24	24	532 12 77-20	Post, Support
3	532 12 75-33	Screen, Cover	26	532 12 46-70	Spring, Retainer
4	532 14 06-54	Cover	27	874 76 05-12	Bolt, Hex 5/16-18 x 3/4
5	532 12 85-98	Chute, Upper	28	532 13 08-89	Bracket, Mounting
6	818 02 10-08	Screw, Special	29	817 49 05-08	Screw, Thread Rolling 5/16-18 x 1/2
7	532 14 05-72	Indicator, Dump Bag	30	532 13 11-37	Pin, Support Post
8	532 08 71-75	Screw, # 10-24 x 1-1/8	31	532 13 44-96	Cap, Tubing End
9	734 11 46-01	Washer 3/16 x 3/4 x 16 Ga	32	532 12 69-19	Bagger, Frame
10	532 00 72-06	Spacer, Split	33	532 12 86-00	Pin, Hinge
11	532 06 08-67	Nut, Acorn # 10-24	34	532 12 75-34	Gasket, Cover
12	810 07 10-00	Washer, lock	35	532 12 95-85	Container, Top
13	532 10 98-08	Latch, Chute	36	532 12 95-86	Container, Bottom, Hard
14	532 12 50-04	Nut, Weld	36	532 13 24-31	Container, Bottom, Soft
15	874 93 05-16	Bolt, Hex 5/16-18 x 1	37	532 13 22-56	Seal, Cover
17	532 13 07-58	Latch Assy., Bagger	38	532 13 08-95	Latch Handle, Cover
18	532 12 85-99	Chute, Lower	39	532 13 54-95	Strip, Seal
19	532 13 38-41	Nut, Acorn 5/16-18	40	874 19 10-08	Screw # 10-24 x 1/2
20	874 29 10-10	Screw # 10-24 x 5/8	41	873 80 06-00	Locknut 3/8-16
21	532 13 27-96	Spring, Cover L.H. (black)	42	532 13 70-31	U-Bolt
22	532 13 32-35	Spacer, Cover	43	532 12 36-35	Weight, Wheel
23	532 13 29-83	Spring, Cover R.H. (grey)			

MODEL NUMBER LTHE30

PART NUMBER	SQUARE	NOTE	PART NUMBER	SQUARE	NOTE	PART NUMBER	SQUARE	NOTE	PART NUMBER	SQUARE	NOTE
532 00 01-60	K	N	532 12 36-51	F		532 13 09-86	A		532 14 07-67	L	N
532 00 37-20	D		532 12 36-74	K		532 13 09-86	A		532 14 07-69	L	N
532 00 41-52	P		532 12 37-13	N		532 13 11-37	S		532 14 07-72	L	N
532 00 77-06	S		532 12 39-76	C		532 13 12-51	M		532 14 07-73	L	N
532 00 81-34	R		532 12 41-81	B		532 13 12-60	M		532 14 07-74	L	N
532 00 81-56	J		532 12 42-10	E		532 13 14-59	K		532 14 07-76	J	
532 00 85-44	D		532 12 43-46	BD		532 13 15-60	M		532 14 07-78	L	N
532 00 85-48	D		532 12 44-15	F		532 13 15-63	P		532 14 07-79	L	N
532 00 92-04	L	N	532 12 44-16	E		532 13 15-87	R		532 14 07-80	K	M
532 05 29-21	A		532 12 46 60	JM		532 13 16-55	Q		532 14 07-82	B	
532 05 91-92	R		532 12 46-70	S		532 13 22-56	R		532 14 07-86	K	N
532 06 99-04	R		532 12 47-01	E		532 13 24-31	R		532 14 09-09	K	M
532 06 08-67	S		532 12 47-84	I		532 13 25-66	G		532 14 09-10	K	M
532 06 51-39	R		532 12 48-36	N		532 13 27-03	R		532 14 09-11	K	M
532 06 91-80	S		532 12 49-31	H		532 13 27-96	S		532 14 09-12	L	N
532 07 16-73	J		532 12 49-37	H		532 13 29-83	S		532 14 09-13	K	N
532 08 71-75	S		532 12 49-57	R		532 13 30-25	F		532 14 09-14	K	N
532 10 13-26	F		532 12 49-59	R		532 13 32-36	S		532 14 09-16	K	N
532 10 28-03	E		532 12 49 61	JD		532 13 33 37	J		532 14 09 19	B	N
532 10 47-57	A		532 12 49-96	DT		532 13 38-41	S		532 14 12-26	P	
532 10 48-20	C		532 12 50-04	S		532 13 39-43	M		532 14 12-80	R	N
532 10 53-04	N		532 12 51-42	B		532 13 40-14	D		532 14 12-81	R	N
532 10 64-51	U		532 12 55-93	F		532 13 43-00	C		532 14 12-97	K	N
532 10 68-88	J		532 12 61-15	D		532 13 44-96	R		532 14 13-93	B	
532 10 87-36	P		532 12 61-87	H		532 13 47-44	D		532 14 14-70	P	
532 10 84-23	P		532 12 64-50	P		532 13 53-71	Q		532 14 17-35	D	
532 10 88-24	P		532 12 64-70	BD		532 13 54-96	R		532 14 17-36	B	
532 10 92-38	B		532 12 64-71	GK		532 13 63-83	M		532 14 20-28	D	
532 10 95-53	P		532 12 64-72	G		532 13 66-31	M		532 14 20-33	U	
532 10 95-96	B		532 12 67-00	B		532 13 68-30	R		532 14 21-87	D	
532 10 98-08	S		532 12 68-47	GHJ		532 13 70-31	S		532 14 25-37	R	N
532 11 04-22	C		532 12 69-19	H		532 13 70-61	N		532 14 25-64	L	N
532 11 04-38	H		532 12 69-38	A		532 13 70-62	H		532 14 28-73	A	
532 11 04-52	M		532 12 70-18	C		532 13 70-96	G		532 14 28-81	P	
532 11 04-85	M		532 12 73-56	M		532 13 71-80	F		532 14 44-13	J	N
532 11 07-12	P		532 12 73-57	M		532 13 72-66	M		532 14 45-85	J	
532 12 00-68	C		532 12 73-59	D		532 13 74-22	R		532 14 49-21	P	
532 12 11-99	L		532 12 73-69	J		532 13 74-37	I		532 14 49-24	P	
532 12 12-32	H		532 12 73-80	N		532 13 76-45	M		532 14 50-06	C	N
532 12 12-46	C		532 12 73-96	E		532 13 80-29	K		532 14 51-87	U	
532 12 12-48	C		532 12 73-98	C		532 13 83-95	D		532 14 51-90	B	
532 12 12-49	D		532 12 75-33	S		532 13 84-96	M		532 14 56-73	P	
532 12 17-50	C		532 12 75-34	R		532 13 87-76	M		532 14 59-89	M	
532 12 12-74	L	N	532 12 77-20	S		532 13 91-23	K	N	532 14 59-90	N	
532 12 13-95	P		532 12 77-44	M		532 13 93-52	D		532 14 60-64	P	
532 12 13-16	N		532 12 79-51	F		532 13 98-88	C		532 86 08-57	M	
532 12 14-66	D		532 12 83-53	P		532 13 99-33	J		734 11 46-01	MS	
532 12 17-48	HR		532 12 84-45	A		532 13 99-69	A		810 03 06-00	H	
532 12 17-49	HL		532 12 85-08	H		532 14 00-50	A		810 04 04-00	HP	
532 12 19-26	G		532 12 85-11	H		532 14 00-51	A		810 04 05-00	I	
532 12 19-27	G		532 12 85-98	S		532 14 00-64	M		810 04 07-00	K	
532 12 19-30	D		532 12 85-99	S		532 14 00-93	M		810 07 10-00	S	
532 12 19-33	D		532 12 86-00	R		532 14 01-42	A		810 09 04-00	J	
532 12 19-78	J		532 12 87-74	M		532 14 02-05	R		811 05 04-00	A	
532 12 19-80	M		532 12 92-07	M		532 14 02-06	R		811 05 06-00	I	
532 12 20-18	O		532 12 95-85	R		532 14 02-13	R		812 00 00-01	L	
532 12 20-23	D		532 12 95-86	R		532 14 02-96	N		812 00 00-02	L	
532 12 20-27	O		532 12 98-95	H		532 14 03-29	H		812 00 00-29	H	
532 12 20-51	M		532 12 99-63	M		532 14 04-00	P		817 00 00-34	J	
532 12 20-52	KM		532 12 99-65	D		532 14 04-01	P		812 00 00-45	L	
532 12 25-04	J		532 12 99-83	N		532 14 04-13	P		817 02 10-08	P	
532 12 33-94	J		532 13 04-65	H		532 14 04-53	R		817 03 08-08	F	
532 12 34-04	K		532 13 07-45	D		532 14 05-51	C		817 06 04-08	DT	
532 12 34-36	J		532 13 07-58	S		532 14 05-52	C		817 43 10-08	E	
532 12 34-37	J		532 13 07-94	M		532 14 05-72	S		817 49 05-08	JMPS	
532 12 34-38	E		532 13 08-40	H		532 14 06-07	L	N	817 49 05-12	AB	
532 12 34-87	D		532 13 08-41	M		532 14 06-08	M		817 49 05-16	B	
532 12 34-96	O		532 13 08-50	A		532 14 06-54	S		817 49 06-12	B	
532 12 35-43	J		532 13 08-89	S		532 14 07-63	L	N	817 49 06-24	F	
532 12 35-83	L		532 13 08-95	K		532 14 07-64	L	N	817 72 04-08	KI	
532 12 36-36	S		532 13 09-84	A		532 14 07-65	I	N	818 02 10-08	S	

