

LT4140G/LT4130G



1.1995

Spare parts

Ersatzteile

Pièces détachées

Reserve onderdelen

Repuestos

Reservdelar

Replaces

Ersetzt

Remplace

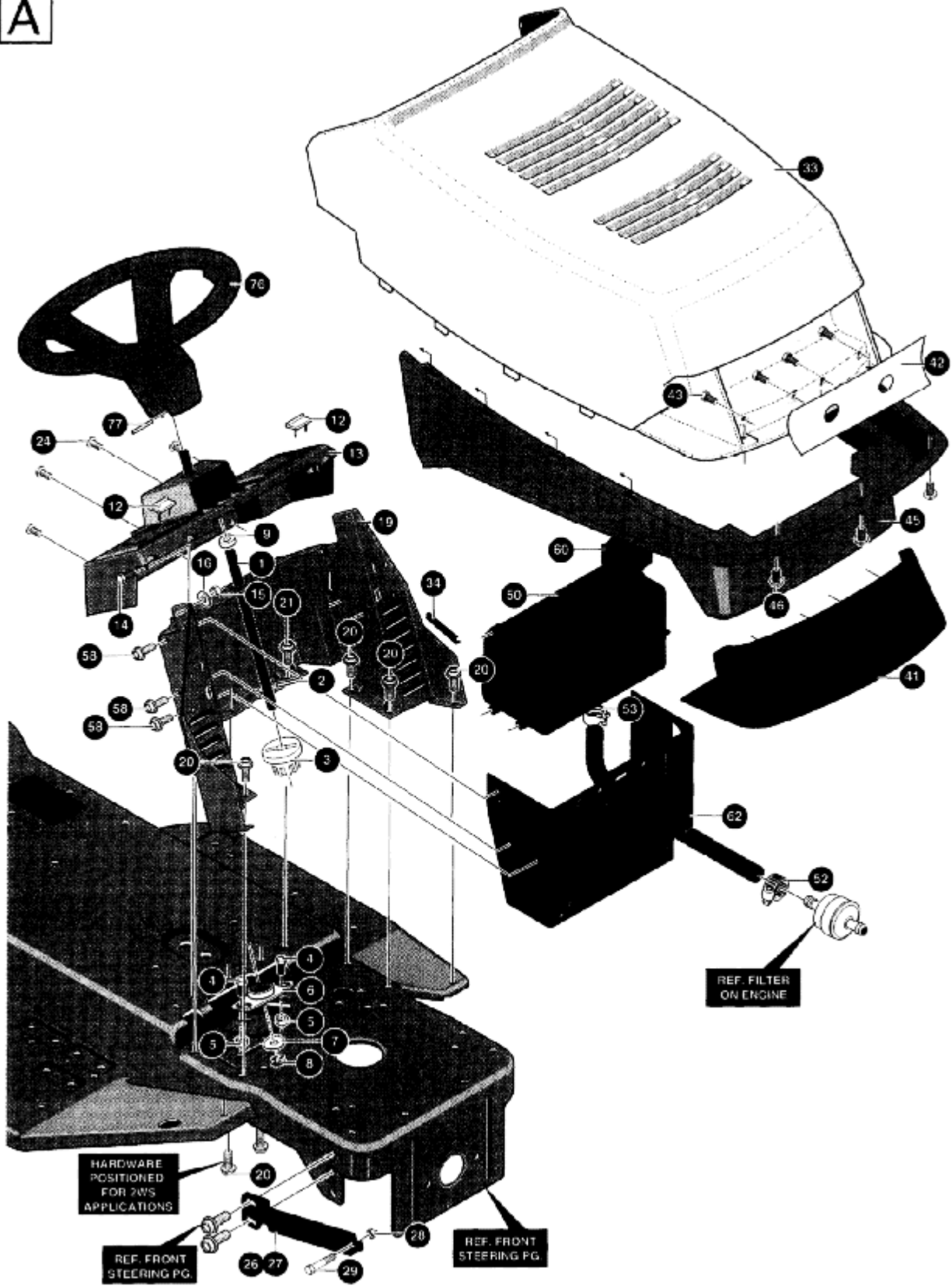
Vervangt

Reemplaza

Ersätter

106 23 05-64

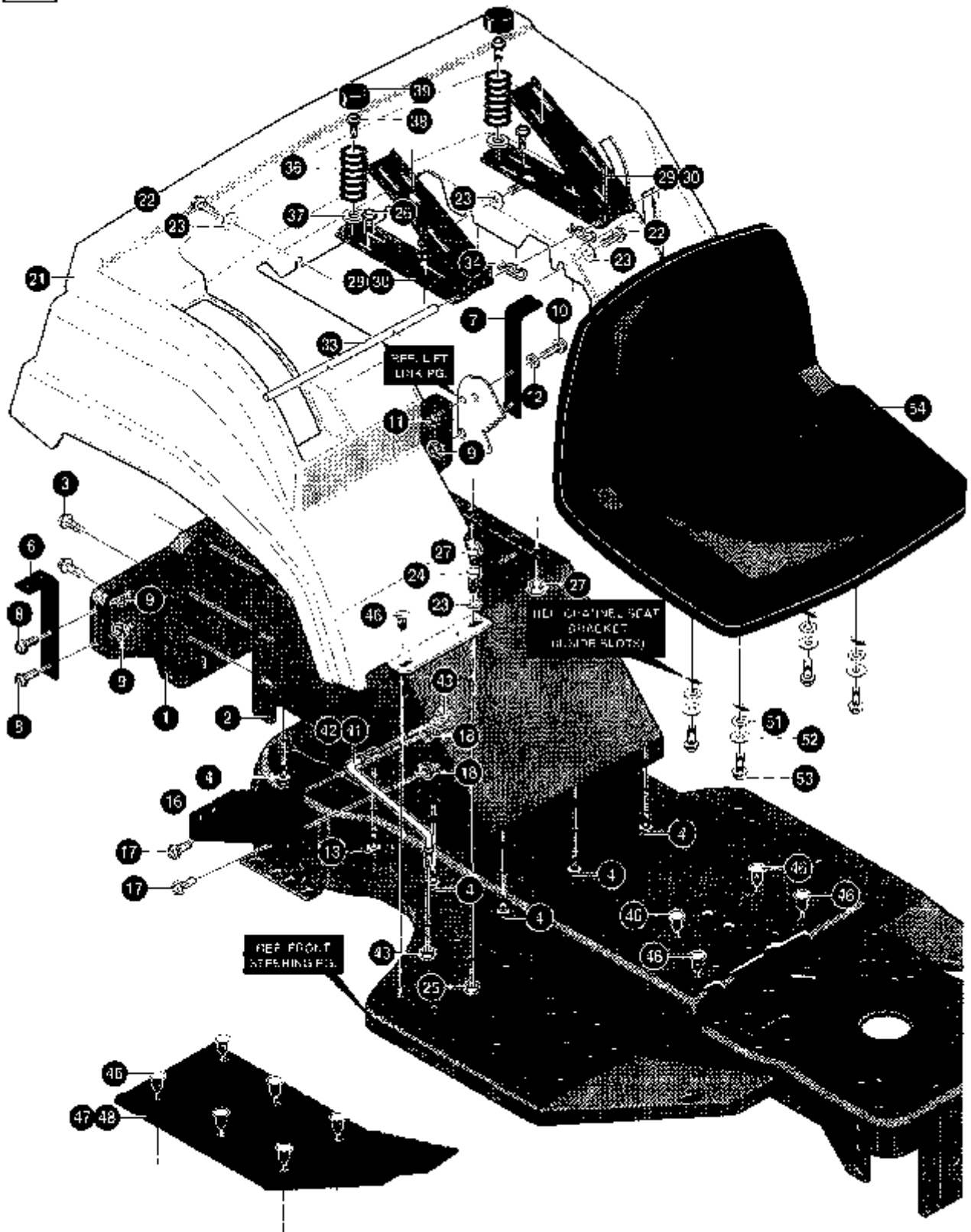
A





| KEY# | PART # | DESCRIPTION CITY. | QTY. |
|------|--------------|---|------|
| 1 | 533 30 23-07 | SHAFT, STEERING EURO LT SHORT | 1 |
| 2 | 533 30 25-24 | PIN, DOWEL STR ERO LT | 1 |
| 3 | 533 30 23-14 | PINION, STEERING | 1 |
| 4 | 533 32 37-31 | SCREW, 5/16-24 X .75 (TO 30-35 FT#) | 2 |
| 5 | 533 07 11-00 | NUT, 5/16-24 HEXWDFLLK..... | 2 |
| 6 | 533 30 24-98 | BEARING, FLANGED .500 ID X .OD X .75 | 1 |
| 7 | 533 00 29-68 | WASHER, FLAT .504 X .75 X .059 | 1 |
| 8 | 533 02 08-64 | RING, RET E .39 X .04 TRU 5133-50 | 1 |
| 9 | 533 30 32-28 | BUSHING STEER, SHIFT UPPER..... | 1 |
| 12 | 533 32 18-10 | BUMPER, HOOD/DASH, EURO, TOP..... | 2 |
| 13 | 533 33 13-79 | DASH, TALL | 1 |
| 14 | 874 76 04-12 | SCREW, 1/4-20 X .75 HHC | 2 |
| 15 | 533 00 15-02 | NUT, 1/4-20 REGHEXCTRLK..... | 2 |
| 16 | 533 12 03-92 | WASHER, FLAT .281 X .63 X .065 | 2 |
| 19 | 533 30 23-31 | DASH, LOWER SHORT, LT | 1 |
| 20 | 533 03 54-97 | SCREW, 5/16-18 X .50 WAHTAP | 8 |
| 21 | 533 04 52-63 | SCREW, 5/16-18 X .37 WAHTAP | 2 |
| 23 | 533 99 53-46 | SCREW, 1/4-20 X .50 WAHTAP..... | 2 |
| 24 | 533 30 58-50 | SCREW, 1 /4-20 X .50 PHPNTAP | 4 |
| 26 | 533 30 88-98 | BRACKET, HOOD, RH, H19/G16..... | 1 |
| 27 | 533 30 88-97 | BRACKET, HOOD, LH | 1 |
| 28 | 533 00 14-98 | NUT, 5/16-18 REGHEXCTRLK | 2 |
| 29 | 533 02 50-86 | BOLT, .500 X .375 HSH 5/16-18 | 2 |
| 33 | 533 33 21-13 | HOOD, UPPER | 1 |
| 34 | 533 05 21-51 | EDGING, WIDE BLACK | 78" |
| 41 | 533 33 11-77 | LENS, EURO II HOOD SMOKED GREY | 1 |
| 42 | 533 31 05-34 | DECAL, REFLECTOR VER II HOOD..... | 1 |
| 43 | 533 30 03-02 | SCREW, #10 X .50 HHTAPPST | 4 |
| 45 | 533 33 11-84 | GRILLE, MOLD/GREY | 1 |
| 46 | 533 31 83-04 | SCREW, 1/4-14X .75 PHPNHTAP..... | 3 |
| 50 | 533 30 58-20 | ASSEMBLY, GAS TANK 1.5GALLON (OPTION) | 1 |
| 52 | 532 12 34-87 | CLAMP, FUEL LINE | 1 |
| 53 | 532 12 34-87 | CLAMP,HOSE SCREW TYPE | 1 |
| 58 | 533 30 03-03 | SCREW, .25 X .75 X .51 HHWAPLASTITE | 6 |
| 60 | 533 01 25-01 | CAP, FUEL 2.5" THROAT | 1 |
| 62 | 533 32 47-95 | HEAT SHIELD, ERO 1.5 & 3 GALLON | 1 |
| 76 | 533 33 08-47 | STEERING WHEEL | 1 |
| 77 | 533 45 63-78 | PIN, SPRING .250 DIA X 2.00 LONG HVPL | 1 |

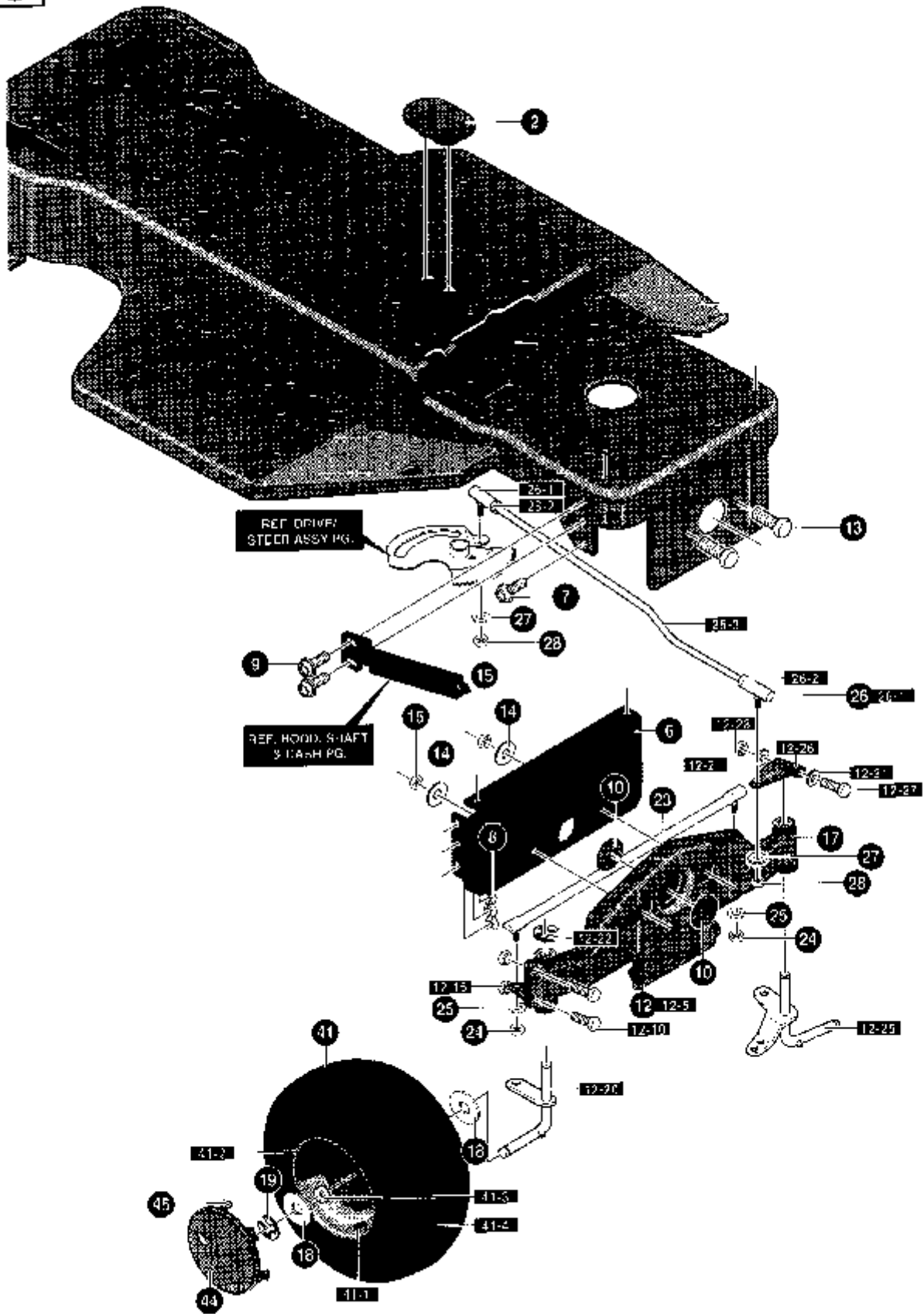
B





| KEY # | PART # | DESCRIPTION | QTY |
|-------|--------------|--|-----|
| 1 | 533 32 20-68 | SEAT SUPPORT, ELECTRIC LIFT | 1 |
| 2 | 533 32 20-69 | SUPPORT, FENDER & SEAT ELECTRIC/LIFT | 1 |
| 3 | 533 03 54-98 | SCREW, 5/16--18 X .75 WAHHTAP | 5 |
| 4 | 533 03 54-97 | SCREW, 5/16-18 X .50 WAHHTAP | 10 |
| 6 | 533 30 63-99 | SUPPORT, FENDER, RIGHT | 1 |
| 7 | 533 30 63-97 | SUPPORT, FENDER, LEFT | 1 |
| 8 | 533 05 60-30 | SCREW, 5/16-18 X .75 WDFLLK | 3 |
| 9 | 533 05 52-73 | NUT, 5/16-18 HXWDFLLK | 3 |
| 10 | 874 76 04-12 | SCREW, 1/4-20 X .75 HHC | 1 |
| 11 | 533 05 13-35 | NUT, 1/4-20 WDFLWHIZ-LK | 1 |
| 12 | 533 12 03-85 | WASHER, FLAT .250 X .56 X .049 | 1 |
| 13 | 533 18 00-77 | SCREW, 5/16-18 X .75 | 1 |
| 16 | 533 30 53-81 | SUPPORT, SHIFT PLATE | 1 |
| 17 | 533 05 60-30 | SCREW, 5/16-18 X .75 WDFLLK | 2 |
| 18 | 533 05 52-73 | NUT, 5/16-18 HXWDFLLK | 2 |
| 21 | 533 31 05-76 | FENDER, EURO, GT | 1 |
| 22 | 533 04 48-11 | SCREW, 1/4-20 X .75 WAHHTAP | 6 |
| 23 | 734 11 52-01 | WASHER, FLAT .281 X 1.00 X .063 | 8 |
| 24 | 874 76 04-12 | SCREW, 1/4-20 X .75 HHC | 2 |
| 25 | 533 00 15-02 | NUT, 1/4-20 REGHEXCTRLK..... | 2 |
| 26 | 533 05 60-30 | SCREW, 5/16-18 HXWDFLLK | 4 |
| 27 | 533 00 14-98 | NUT 5/16-18 REGHEXCTRLK..... | 4 |
| 29 | 533 30 28-97 | CHANNEL, SEAT, RH..... | 2 |
| 30 | 533 30 54-24 | CHANNEL, SEAT, LH | 2 |
| 33 | 533 30 44-81 | ROD, SEAT SUPPORT | 1 |
| 34 | 533 03 63-68 | PIN, HAIR .072 DIA X 1.13 LONG | 2 |
| 36 | 533 33 04-63 | SPRING, SEAT 1.50 OD X 2.25 LONG | 2 |
| 37 | 533 12 03-93 | WASHER, FLAT .344 X .69 X .065 | 2 |
| 38 | 533 03 54-98 | SCREW, 5/16-18 X .75 WAHHTAP | 2 |
| 39 | 533 05 69-07 | COVER, SEAT SPRING 1.5 ID X 1.0 LONG | 2 |
| 41 | 533 31 93-88 | SUPPORT, FOOTREST STIFFNER, RH | 1 |
| 42 | 533 31 93-87 | SUPPORT, FOOTREST STIFFNER, | 1 |
| 43 | 533 00 14-98 | NUT, 5/16-18 REGHEXCTRLK | 4 |
| 46 | 533 31 10-87 | FASTENER, RATCHET GREY | 18 |
| 47 | 533 31 48-88 | FOOT PAD ASSEMBLY, RH, EURO W/ADH..... | 1 |
| 48 | 533 31 48-89 | FOOT PAD ASSEMBLY, LH, EURO W/ADH..... | 1 |
| 51 | 533 12 03-93 | WASHER, FLAT .344 X .69 X .065 .. | 4 |
| 52 | 533 12 06-38 | WASHER, HVSPTLK .328 X .60 X .0 | 4 |
| 53 | 533 18 00-77 | SCREW, 5/16-18 X .75 HHC | 4 |
| 54 | 533 31 03-84 | SEAT, W/SW HOLE | 1 |

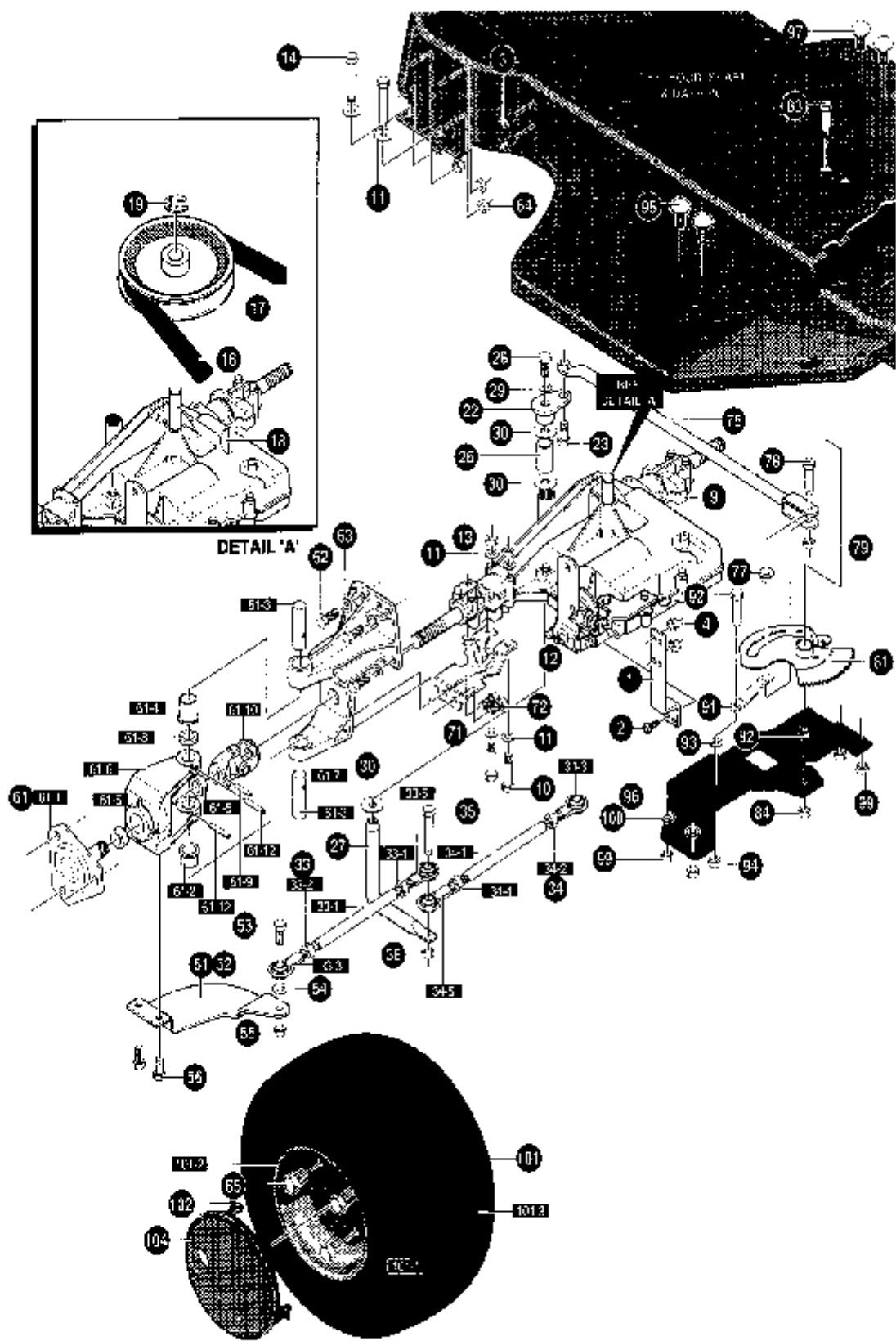
C





| KEY# | PART# | DESCRIPTION | QTY |
|-------|--------------|--|-----|
| 2 | 533 30 52-80 | COVER, SECTOR BOLT PLAS GREY | 1 |
| 6 | 533 03 02-32 | BRACKET, FRONT AXLE SUPPORT | 1 |
| 7 | 533 05 60-30 | SCREW, 5/16-18 X .75 WDFLLK | 2 |
| 8 | 533 05 52-73 | NUT, 5/16-18 HXWDFLLK | 6 |
| 9 | 533 05 36-52 | SCREW, 5/16-18 X .75 HXWDFL | 4 |
| 10 | 533 30 71-12 | PLUG, FRONT AXLE 1.938 DIA X .062~ | 2 |
| 12 | A | SUB-ASSEMBLY FRONT AXLE, EURO, LT, SHORT. | 1 |
| 12-5 | 533 31 06-70 | AXLE ASSEMBLY, FRONT WELD, BLACK | 1 |
| 12-10 | 533 18 00-77 | SCREW, 5/16-18 X .75 HHC | 4 |
| 12-15 | 533 00 14-98 | NUT, 5/16-18 REGHEXCTRLK | 4 |
| 12-20 | 533 30 53-40 | ASSEMBLY, SPINDLE, RH, EURO, LT | 1 |
| 12-21 | 533 99 64-16 | WASHER, FLAT .391 X 1.00 X .125 | 2 |
| 12-22 | 533 03 66-25 | RING, RETEX .57 X .05 TRU 5133-75..... | 1 |
| 12-25 | 533 30 53-39 | ASSEMBLY, SPINDLE, LH, EURO, LT..... | 1 |
| 12-26 | 533 31 70-19 | ARM STEERING UPPER, BLACK | 1 |
| 12-27 | 533 18 01-34 | SCREW, 3/8-16 X 2.50 HHC | 1 |
| 12-28 | 533 00 14-99 | NUT, 3/8-16 REGHXCTRLK | 1 |
| 13 | 874 78 06-48 | SCREW, 3/8-16 X 3.00 HHC | 2 |
| 14 | 533 00 24-83 | WASHER, .39 ID X 1.25 D X .07 BELLVIL | 2 |
| 15 | 533 00 14-99 | NUT, 3/8-16 REGHXCTRLK | 2 |
| 17 | 533 00 07-06 | ZERK, GREASE FITTING | 4 |
| 18 | 533 00 06-42 | WASHER, FLAT .755 X 1.31 X .075 | 4 |
| 19 | 533 03 66-25 | RING, RETEX .57 X .05 TRU 5133-75..... | 2 |
| 23 | 533 30 03-28 | TIE ROD, .625 DIA GROUND ENGAGER | 1 |
| 24 | 533 12 03-69 | NUT, 3/8-24 REGHEX | 2 |
| 25 | 533 12 03-82 | WASHER, REGSPTLK .393 X .68 X .10..... | 2 |
| 26 | 533 30 29-08 | LINK ASSEMBLY, .625 DIA DRAG, LT, 4WS | 1 |
| 26-1 | 533 05 71-58 | BALL JOINT, 3/8 THD SHORT STUD | 2 |
| 26-2 | 533 12 49-25 | NUT, 3/8-24 REGHEXJAM | 2 |
| 26-3 | 533 30 29-07 | LINK, .625 DIA DRAG, LT, 4WS | 1 |
| 27 | 533 12 03-82 | WASHER, REGSPTLK .393 X .68 X .10..... | 2 |
| 28 | 533 12 49-25 | NUT, 3/8-24 REGHEXJAM | 2 |
| 41 | 533 32 15-15 | TIRE&RIM, PU 15X6.0X6 | 2 |
| 41 -1 | 533 02 41-67 | VALVE STEM | |
| 41-2 | 533 32 15-16 | RIM, WHEEL | |
| 41-3 | 533 31 44-16 | BEARING, FLANGE | |
| 41-4 | 533 31 67-02 | TIRE15X6.0X6 | |
| 44 | 533 30 44-44 | HUB CAP, 6" EURO | 2 |
| 45 | 533 30 66-69 | CLIP, HUBCAP TINN #C25467-017-4 | 8 |

D

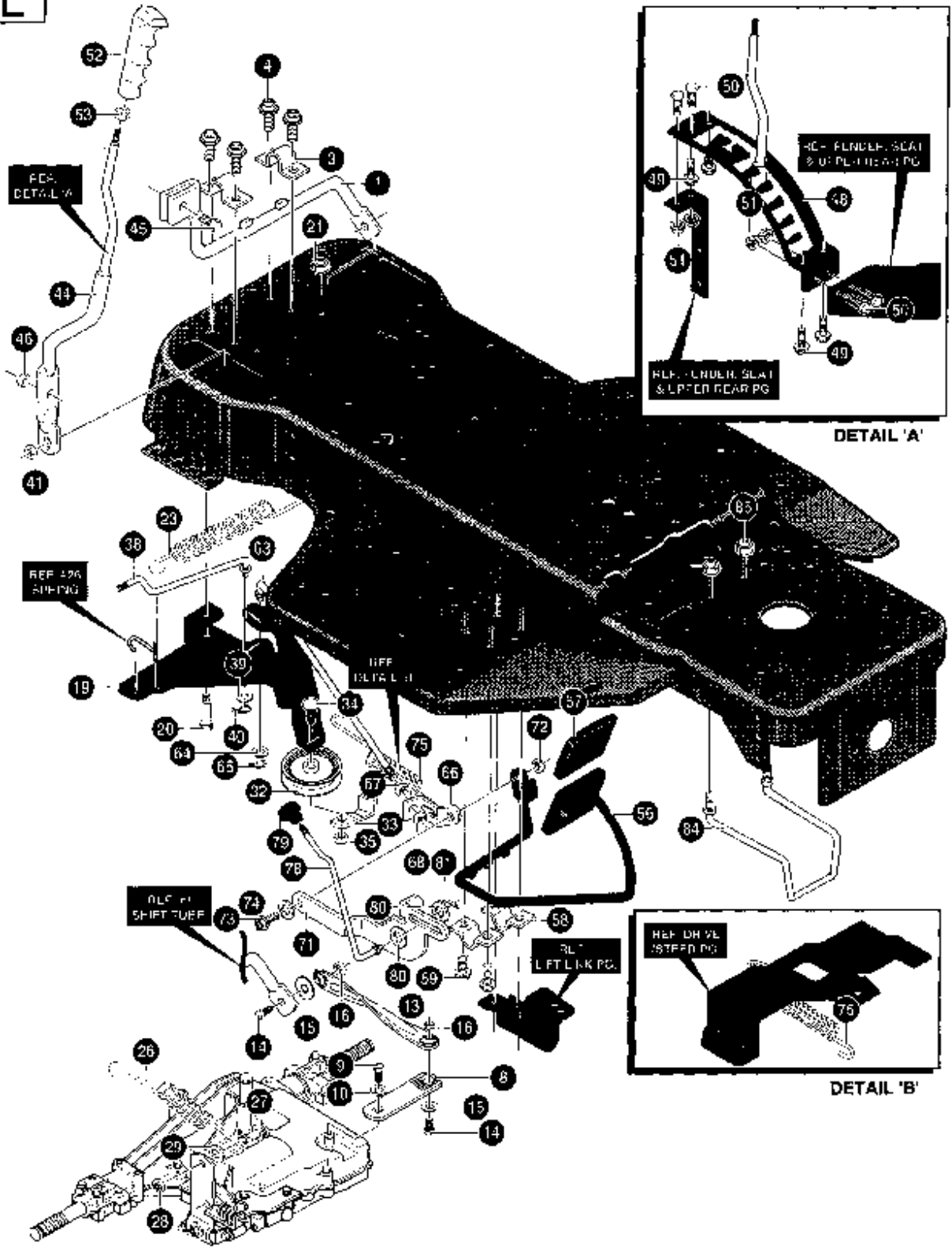


| KEY # | PART # | DESCRIPTION | QTY |
|-------|--------------|---------------------------------------|-----|
| 1 | 533 32 13-82 | BRACKET, STABILIZER EURO | 1 |
| 2 | 533 03 54-98 | SCREW, 5/16-18 X .75 WAHHTAP | 1 |
| 3 | 533 18 00-77 | SCREW, 5/16-18 X .75 HHC | 2 |
| 4 | 533 00 14-98 | NUT, 5/16-18 REGHEXCTRLK | 2 |
| 9 | * | TRANSAXLE, 6SPEED, 4WS, P930-036 | 1 |
| 10 | 874 78 05-44 | SCREW, 5/16-18 X 2.50 HHC | 4 |
| 11 | 533 12 03-93 | WASHER, FLAT .344 X .69 X .065 | 12 |
| 12 | 533 04 41-08 | NUT, 5/16-18 HWDFLCTRLK | 4 |
| 13 | 533 00 14-98 | NUT, 5/16-18 REGHEXCTRLK | 4 |
| 14 | 874 78 05-44 | SCREW, 5/16-18 X 2.50 HHC | 4 |
| 16 | 533 30 32-41 | BELT, V 4L 90.00 LONG | 1 |
| 17 | 533 30 31-09 | PULLEY, 6.6 OD V4L T/A | 1 |
| 18 | 533 05 07-95 | KEY, HI-PRO 606 .75 DIA X .187 WIDE | 1 |
| 19 | 533 02 20-53 | RING, RETEX .58 X .035 TRU 5100-62 | 1 |
| 22 | 533 30 87-19 | PIVOT, STEERING | 1 |
| 23 | 533 01 23-19 | BOLT, .562 X .340 HSH 3/8-24 | 1 |
| 26 | 533 30 41-15 | SPACER, STEERING SHAFT | 1 |
| 27 | 533 30 87-20 | SHAFT, STEERING PIVOT | 1 |
| 28 | 533 42 10-51 | SCREW, 5/16-24 X 1.00 HHC | 1 |
| 29 | 533 04 56-02 | WASHER, FLAT .333 X .87 X .119 | 1 |
| 30 | 533 02 51-77 | WASHER, FLAT .765 X 1.19 X .048 | 3 |
| 33-1 | 533 30 84-47 | ROD, TIE 1/2- D X 8.12 LONG | 1 |
| 33-2 | 533 30 83-99 | NUT, 3/8-24, LH, THD REGHJAM | 1 |
| 33-3 | 533 30 83-84 | BALLJOINT, LH, 3/8-24 | 1 |
| 33-4 | 533 12 49-25 | NUT, 3/8-24 REGHEXJAM | 1 |
| 33-5 | 533 30 42-60 | BALL JOINT, RH, 3/8-24 | 1 |
| 34-1 | 533 30 84-46 | ROD, TIE 1/2- D X 9.75 LONG | 1 |
| 34-2 | 533 30 83-99 | NUT, 3/8-24, LH, THD REGHJAM | 1 |
| 34-3 | 533 30 83-84 | BALLJOINT, LH, 3/8-24 | 1 |
| 34-4 | 533 12 49-25 | NUT, 3/8-24 REGHEXJAM | 1 |
| 34-5 | 533 30 42-60 | BALLJOINT, RH, 3/8-24 | 1 |
| 35 | 533 18 16-46 | SCREW, 3/8-24 X 1.75 HHC | 1 |
| 36 | 533 41 23-49 | NUT, 3/8-24 HXCTRLK | 1 |
| 51 | 533 30 41-20 | ARREAR WHEEL STEER RH | 1 |
| 5 | 533 30 41-21 | ARREAR WHEEL STEER LH | 1 |
| 5 | 874 61 06-24 | SCREW, 3/8-24 X 1.25 HHC | 2 |
| 54 | 533 12 03-82 | WASHER, REGSPTLK .393 X .68 X .10 | 2 |
| 55 | 533 41 23-49 | NUT, 3/8-24 HXCTRLK | 2 |
| 56 | 874 78 06-16 | SCREW, 3/8-16 X 1.00 WAHHTAP | 4 |
| 61 | 533 32 37-43 | U-joint ASSEMBLY, 4WS, LT, DUTY | 2 |
| 61-1 | 533 01 22-80 | HUASSEMBLY | 1 |
| 612 | 533 32 45-78 | BEARING, FLSH .752 ID X .937 OD X .75 | 1 |
| 61-3 | 533 01 22-89 | PINSTEERING HINGE | 2 |
| 61- | 533 32 45-78 | BEARING, FLSH .752 ID X .937 OD X .75 | 1 |
| 61-5 | 533 01 23-25 | BEARING, BALL 6203-2AA-3/4 | 2 |
| 61-6 | 533 01 24-65 | BRACKET, STEERING PIVOT | 1 |
| 61-7 | 533 01 24-66 | BRACKET, STEERING PIVOT | 1 |
| 61-8 | 533 02 16-82 | WASHER, FLAT .765 X 1.25 X .042 | 1 |
| 61-9 | 533 03 63-11 | PIN, GROOVED .250 DIA X 1.50 LONG | 1 |
| 61-10 | 533 32 05-31 | U-JOINT ASSEMBLY, W/ZERK (LONG) | 1 |
| 61-12 | 533 45 67-22 | PIN, SPRING .250 DIA X 1.50 LONG | 2 |
| 62 | 533 18 00-79 | SCREW, 5/16-18 X 1.00 HHC | 8 |
| 63 | 533 12 03-93 | WASHER, FLAT .344 X .69 X .065 | 8 |
| 64 | 533 00 14-98 | NUT, 5/16-18 REGHEXCTRLK | 8 |
| 65 | 533 18 16-83 | SCREW, 1/2-20 X .50 HHC | 6 |
| 71 | 533 30 32-22 | BACRKET X-AXLE MTG, 4WS | 2 |
| 72 | 533 03 54-98 | SCREW, 5/16-18 X .75 WAHHTAP | 4 |
| 75 | 533 30 25-93 | ROD, REAR WHEEL STEER, 4WS (930-0) | 1 |
| 77 | 33 30 41-16 | CAM YOKE ROLLER | 1 |
| 78 | 533 30 41-22 | BOLT, .625 X 1.175 HSH | 1 |
| 79 | 533 27 46-54 | NUT, 1/2-20 REGHXCTRLK | 1 |
| 81 | 533 30 28-77 | ASSEMBLY, SECTOR GEAR, 4WS | 1 |
| 82 | 533 30 28-78 | BEARING, SLEEVE | 1 |
| 83 | 533 18 17-09 | SCREW, 1/2-20 X 2.50 HHC | 1 |
| 84 | 533 27 46-54 | NUT, 1/2-20 REGHXCTRLK | 1 |
| 91 | 533 30 25-94 | FOLLOWER, ROLLER | 1 |
| 92 | 533 30 25-88 | BOLT, .265 X .800 HSH 3/8-24 | 1 |
| 93 | 533 44 63-63 | WASHER, FLAT .375 X .88 X .082 | 1 |
| 94 | 533 41 23-49 | NUT, 3/8-24 HXCTRLK | 1 |
| 96 | 533 30 25-83 | PLATE, PIVOT STEERING EURO | 1 |
| 97 | 533 03 54-97 | SCREW, 5/16-18 X .50 WAHHTAP | 2 |
| 98 | 33 03 54-98 | SCREW 5/16-18 X .75 WAHHTAP | 2 |
| 99 | 533 00 14-98 | NUT, 5/16-18 REGHEXCTRLK | 4 |
| 100 | 533 44 63-63 | WASHER, FLAT .375 X .88 X .082 | 2 |
| 101 | 533 30 42-59 | TIRE & RIM, 20 X 10.00-8 | 2 |
| | 533 02 41-67 | VALVE STEM | 2 |
| | 533 01 24-67 | RIM, WHEEL | 2 |
| 102 | 533 30 66-69 | CLIP, HUBCAP TINN #C25467-017-4 | 10 |
| 104 | 533 30 65-70 | HUB CAP, 8. EURO | 2 |



* CONTACT YOUR NEAREST TRANSAXLE DEALER FOR PARTS AND SERVICE.

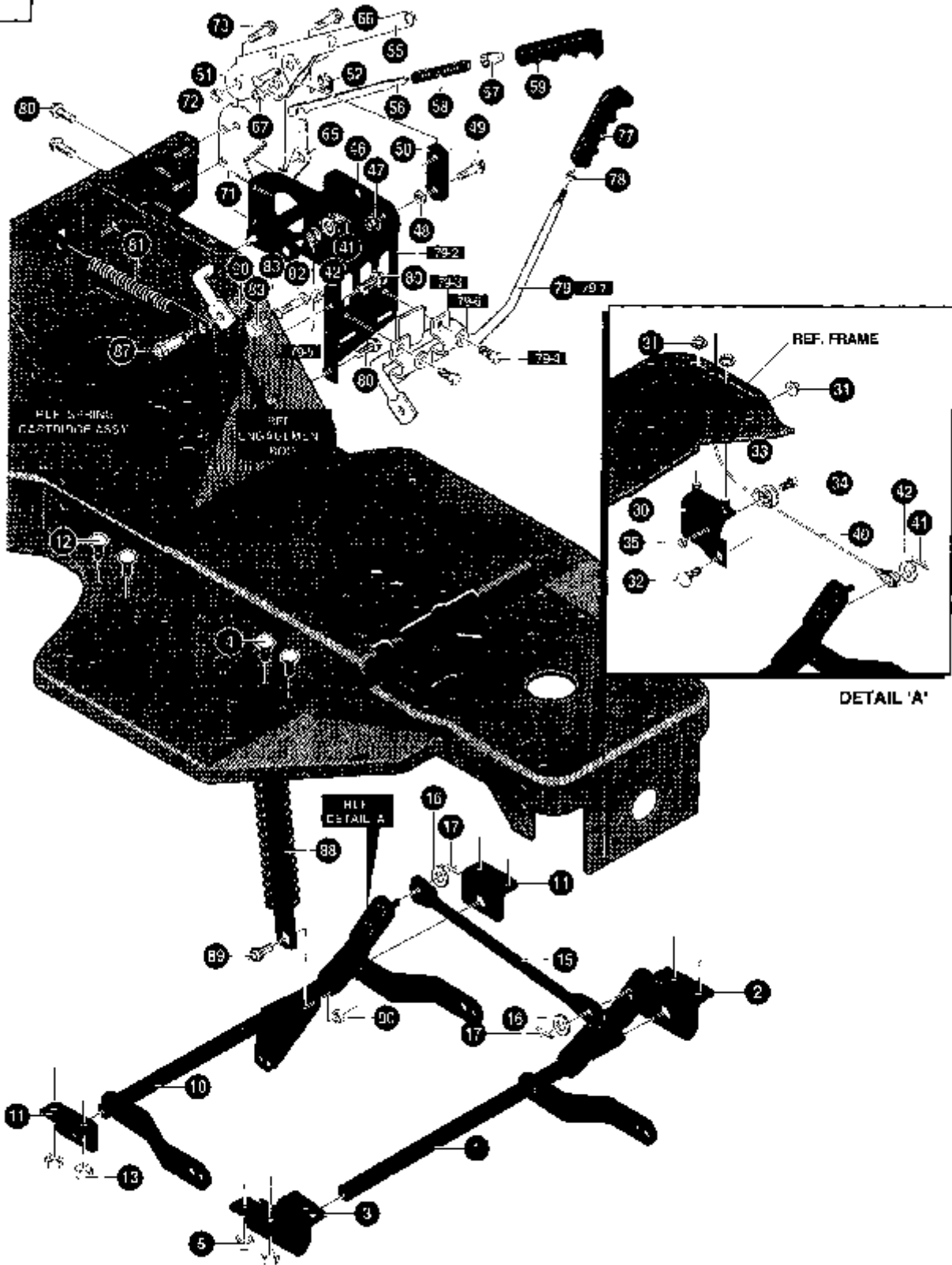
E





| KEY# | PART# | DESCRIPTION | QTY |
|------|--------------|---|-----|
| 1 | 533 32 14-21 | TUBE ASSEMBLY, SHIFT, BLACK | 1 |
| 3 | 533 30 25-38 | CLIP, SHIFT LEVER | 2 |
| 4 | 533 03 54-97 | SCREW, 5/16-18 X .50 WAHHTAP | 4 |
| 8 | 533 30 25-82 | LEVER, TRANSAXLE SHIFT | 1 |
| 9 | 533 05 62-55 | SCREW, 1/4-28 X .75 NYLHHC | 1 |
| 10 | 533 05 71-57 | WASHER, .750 X .250 SP-TRANSAXLE | 1 |
| 13 | 533 30 95-46 | LINK, TIE ROD, SHIFT 7.812 C/L | 1 |
| 14 | 874 78 06-20 | SCREW, 3/8-16 X 1.25 | 2 |
| 15 | 533 12 03-94 | WASHER, FLAT .406 X .81 X .065 | 2 |
| 16 | 533 00 14-99 | NUT, 3/8-16 REGHXCTRLK | 2 |
| 19 | 533 30 40-49 | ARM, IDLER | 1 |
| 20 | 533 05 11-89 | BOLT, .500 X 1.280 HSH 3/8-16..... | 1 |
| 21 | 533 00 14-99 | NUT, 3/8-16 REGHXCTRLK | 1 |
| 23 | 53330 42-09 | SPRING, CLUTCH | 1 |
| 26 | 533 30 41-30 | SPRING, BRAKE 1.00 OD X 3.12 X .120 | 1 |
| 27 | 533 02 50-86 | BOLT, .500 X .375 HSH 5/16-18..... | 1 |
| 28 | 533 00 14-98 | NUT, 5/16-18 REGHEXCTRLK | 1 |
| 29 | 533 30 81-88 | WASHER, FLAT .515 X 1.31 X .09 | 1 |
| 32 | 533 04 02-23 | PULLEY, IDLER BFF | 1 |
| 33 | 53330 41-05 | BELT RETAINER | 1 |
| 34 | 533 05 73-25 | BOLT, 3/8-16 X 2.00 CARRSN | 1 |
| 35 | 533 04 51-71 | NUT, 3/8-16 HWDFL WHIZ-LOCK | 1 |
| 38 | 533 30 40-83 | ROD, SHIFT-ON-THE-GO | 1 |
| 39 | 533 12 03-94 | WASHER, FLAT .406 X .81 X .065 | 1 |
| 40 | 533 03 63-68 | PIN, HAIR .072 DIA X 1.13 LONG..... | 1 |
| 41 | 533 07 10-46 | NUT, 3/8-16 HEXNYL | 1 |
| 44 | 533 30 40-25 | TUBE ASSEMBLY, SHIFT PIVOT | 1 |
| 45 | 533 30 40-86 | BOLT, .375 X .400 1/4-20 X .47 | 1 |
| 46 | 533 00 15-02 | NUT, 1/4-20 REGHEXCTRLK..... | 1 |
| 48 | 533 30 53-82 | QUADRANT, SHIFT P930-6SPEED, EURO | 1 |
| 49 | 533 30 03-02 | SCREW, #10 X .50 HHTAPPST | 4 |
| 50 | 874 76 04-12 | SCREW, 1/4-20 X .75 | 4 |
| 51 | 533 05 13-35 | NUT, 1/4-20 WDFLWHIZ-LK | 4 |
| 52 | 533 30 47-28 | HANDLE, 3/8-16 MOLDED | 1 |
| 53 | 533 12 03-77 | NUT, 3/8-16 REGHX | 1 |
| 56 | 533 30 23-19 | WELD ASSEMBLY, CLUTCH/BRAKE, ARM | 1 |
| 57 | 533 30 23-35 | PAD, CLUTCH/BRAKE MOLD W/L | 1 |
| 58 | 533 31 32-71 | BRACKET, CLUTCH/BRAKE ARM | 2 |
| 59 | 533 03 54-97 | SCREW, 5/16-18 X .50 WAHHTAP | 2 |
| 63 | 533 30 42-12 | ROD, CLUTCH | 1 |
| 64 | 533 12 03-92 | WASHER, FLAT .281 X .63 X .065 | 1 |
| 65 | 533 12 12-23 | PIN, COTTER .062 DIA X .75 LONG | 1 |
| 66 | 533 30 41-25 | BRACKET, BRAKE ROD | 1 |
| 67 | 533 27 11-84 | NUT, 5/16-18 HEXKEPS | 1 |
| 68 | 533 00 14-98 | NUT, 5/16-18 REGHEXCTRLK | 1 |
| 71 | 533 30 42-08 | LEVER, PARK BRAKE | 1 |
| 72 | 533 00 14-98 | NUT, 5/16-18 REGHEXCTRLK | 1 |
| 73 | 533 02 50-86 | BOLT, .500 X .375 HSH 5/16-18..... | 1 |
| 74 | 533 03 02-89 | WASHER, WAVE .50 ID | 1 |
| 75 | 533 03 54-10 | SPRING, .071 X .62 X 4.37 | 1 |
| 78 | 533 30 42-17 | ROD, PARKING BRAKE | 1 |
| 79 | 533 30 43-67 | KNOB, PARK BRAKE, BLACK | 1 |
| 80 | 533 12 03-85 | WASHER, FLAT .250 X .56 X .049 | 2 |
| 81 | 533 12 12-23 | PIN, COTTER .062 DIA X .75 LONG | 1 |
| 84 | 533 31 01-62 | GUIDE, BELT 820 TRANSAXLE | 1 |
| 85 | 533 00 14-98 | NUT, 5/16-18 REGHEXCTRLK | 2 |

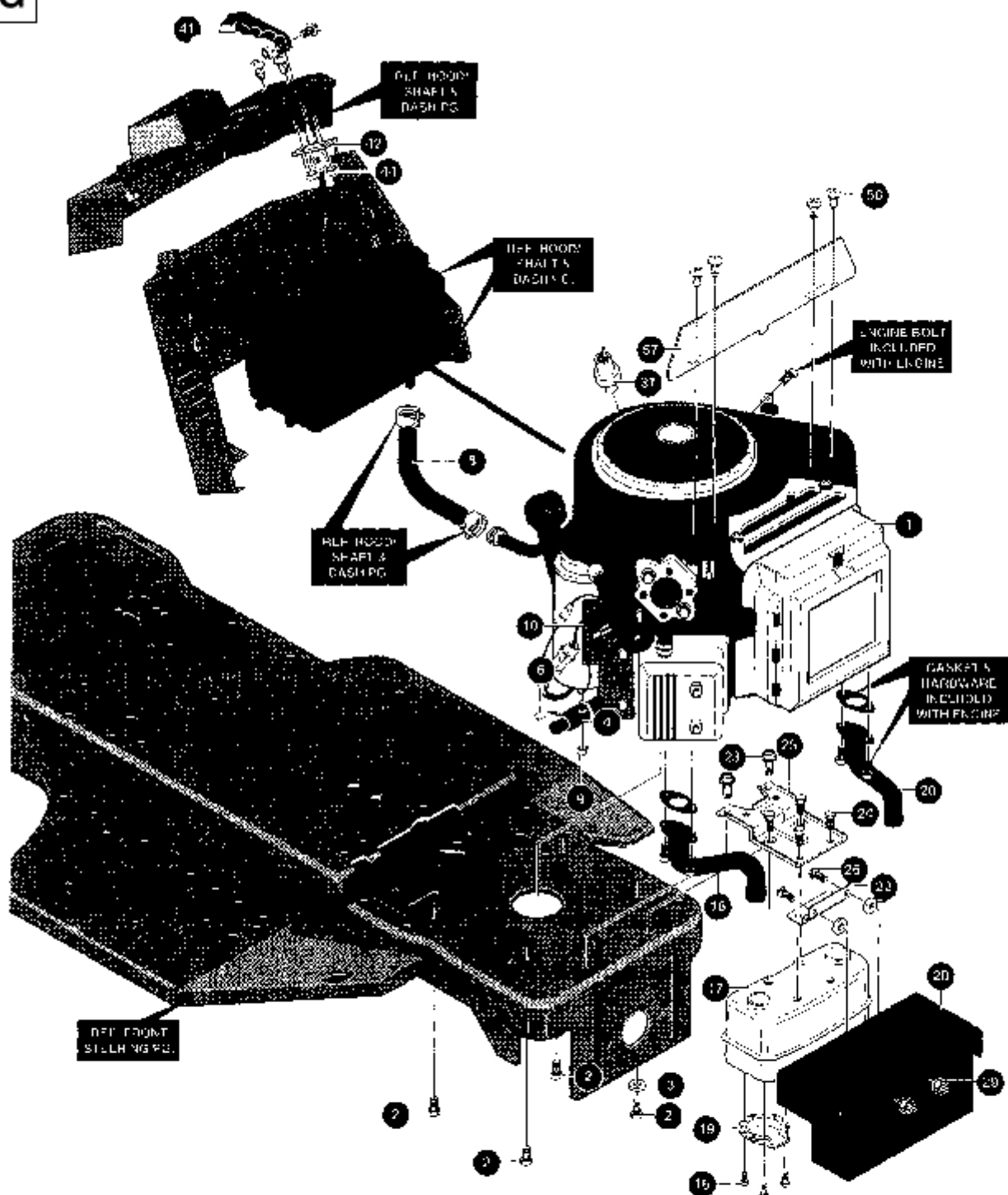
F





| KEY # | PART# | DESCRIPTION | QTY |
|-------|--------------|---|-----|
| 1 | 533 30 23-79 | SHAFT, ASSEMBLY, FRONT LIFT, EURO | 1 |
| 2 | 533 30 49-67 | BRACKET, FRONT HANGER, RH | 1 |
| 3 | 533 30 23-38 | BRACKET, FRONT HANGER, LH | 1 |
| 4 | 533 18 00-77 | SCREW, 5/16-18 X .75 HHC | 4 |
| 5 | 533 00 14-98 | NUT, 5/16-18 REGHEXCTRLK | 4 |
| 10 | 533 30 22-06 | SHAFT ASSEMBLY, REAR LIFT | 1 |
| 11 | 533 30 23-60 | BRACKET, REAR HANGER EURO | 2 |
| 12 | 533 18 00-77 | SCREW, 5/16-18 X .75 HHC | 4 |
| 13 | 533 00 14-98 | NUT, 5/16-18 REGHEXCTRLK | 4 |
| 15 | 533 30 23-80 | ROD, TIE | 1 |
| 16 | 533 12 03-94 | WASHER, FLAT .406 X .81 X .065 | 2 |
| 17 | 533 12 12-22 | PIN, COTTER .090 DIA X .75 LONG | 2 |
| 30 | 533 30 32-30 | ASSEMBLY, PULLEY BRACKET | 1 |
| 31 | 533 05 52-73 | NUT, 5/16-18 HXWDFLLK | 3 |
| 32 | 872 11 05-06 | BOLT, 5/16-18 X .63 CARR | 1 |
| 33 | 533 04 83-06 | PULLEY, POWDER METAL | 1 |
| 34 | 533 30 55-22 | BOLT, .375 X .700 HSH 5/16-18 | 1 |
| 35 | 533 00 14-98 | NUT, 5/16-18 REGHEXCTRLK | 1 |
| 40 | 533 30 32-27 | CABLE, DECK LIFT | 1 |
| 41 | 533 12 12-22 | PIN, COTTER .090 DIA X .75 LONG | 2 |
| 42 | 533 12 03-93 | WASHER, FLAT .344 X .69 X .065 | 2 |
| 46 | 533 30 22-05 | ASSEMBLY, UPPER SHAFT | 1 |
| 47 | 533 00 14-98 | NUT, 5/16-18 REGHEXCTRLK | 1 |
| 48 | 533 04 56-02 | WASHER, FLAT .333 X .87 X .119 | 1 |
| 49 | 533 03 61-49 | BOLT, .375 X .500 HSH 5/16-18 | 1 |
| 50 | 533 30 23-57 | LINK | 1 |
| 51 | 533 30 03-10 | PIN, CLEVIS .310 DIA + .475 LONG | 1 |
| 52 | 533 30 03-11 | RING, RET E .31 X .25 TRU X 5133-31 | 1 |
| 55 | 533 05 83-32 | HEIGHT LEVER | 1 |
| 56 | 533 05 83-30 | ROD, ACTUATOR | 1 |
| 57 | 533 05 83-25 | KNOB, HEIGHT ADJUST, PUSH BUTTON | 1 |
| 58 | 533 05 83-26 | SPRING, HEIGHT ADJUST | 1 |
| 59 | 533 30 47-30 | GRIP, HAND .74 ID X 5.15 | 1 |
| 65 | 533 30 12-39 | PAWL, SQUARE | 1 |
| 66 | 533 30 01-71 | BOLT, .500 X .270 HSH 5/16-18 | 1 |
| 67 | 533 04 41-08 | NUT, 5/16-18 HWDFLCTRLK | 1 |
| 71 | 533 30 23-83 | QUADRANT | 1 |
| 72 | 533 00 14-98 | NUT, 5/16-18 REGHEXCTRLK | 1 |
| 73 | 533 30 01-71 | BOLT, .500 X .270 HSH 5/16-18 | 1 |
| 77 | 533 30 47-29 | HANDLE, 1/2-13 | 1 |
| 78 | 533 12 02-38 | NUT, 1/2-13 HEXJAM | 1 |
| 79 | 533 30 73-85 | ASSEMBLY BRACKET 8 ENGAGE HAND | 1 |
| 79-1 | 533 30 63-91 | ASSEMBLY, ENGAGEMENT ROD | 1 |
| 79-2 | 533 30 22-08 | BRACKET, SUPPORT ENGAGE | 1 |
| 79-3 | 533 31 27-01 | CLIP | 2 |
| 79-4 | 533 18 00-16 | SCREW, 1/4-20 X .50 HHC | 2 |
| 79-5 | 533 00 15-02 | NUT, 1/4-20 REGHEXCTRLK | 2 |
| 79-6 | 533 12 03-85 | WASHER, FLAT .250 X .56 X .049 | 2 |
| 80 | 533 03 54-97 | SCREW, 5/16-18 X .50 WAHTAP | 4 |
| 81 | 533 30 53-06 | SPRING, TENSION | 1 |
| 82 | 533 18 01-34 | SCREW, 3/8-16 X 2.50 HHC | 1 |
| 83 | 533 27 11-90 | NUT, 3/8-16 HEXKEPS | 2 |
| 87 | 533 30 59-89 | BOLT, .437 X .43 HSH | 1 |
| 88 | 533 30 44-48 | ASSEMBLY, SPRING CARTRIDGE | 1 |
| 89 | 533 02 05-07 | BOLT, .437 X .156 HSH 5/16-18 | 1 |
| 90 | 533 00 14-98 | NUT, 5/16-18 REGHEXCTRLK | 2 |

G

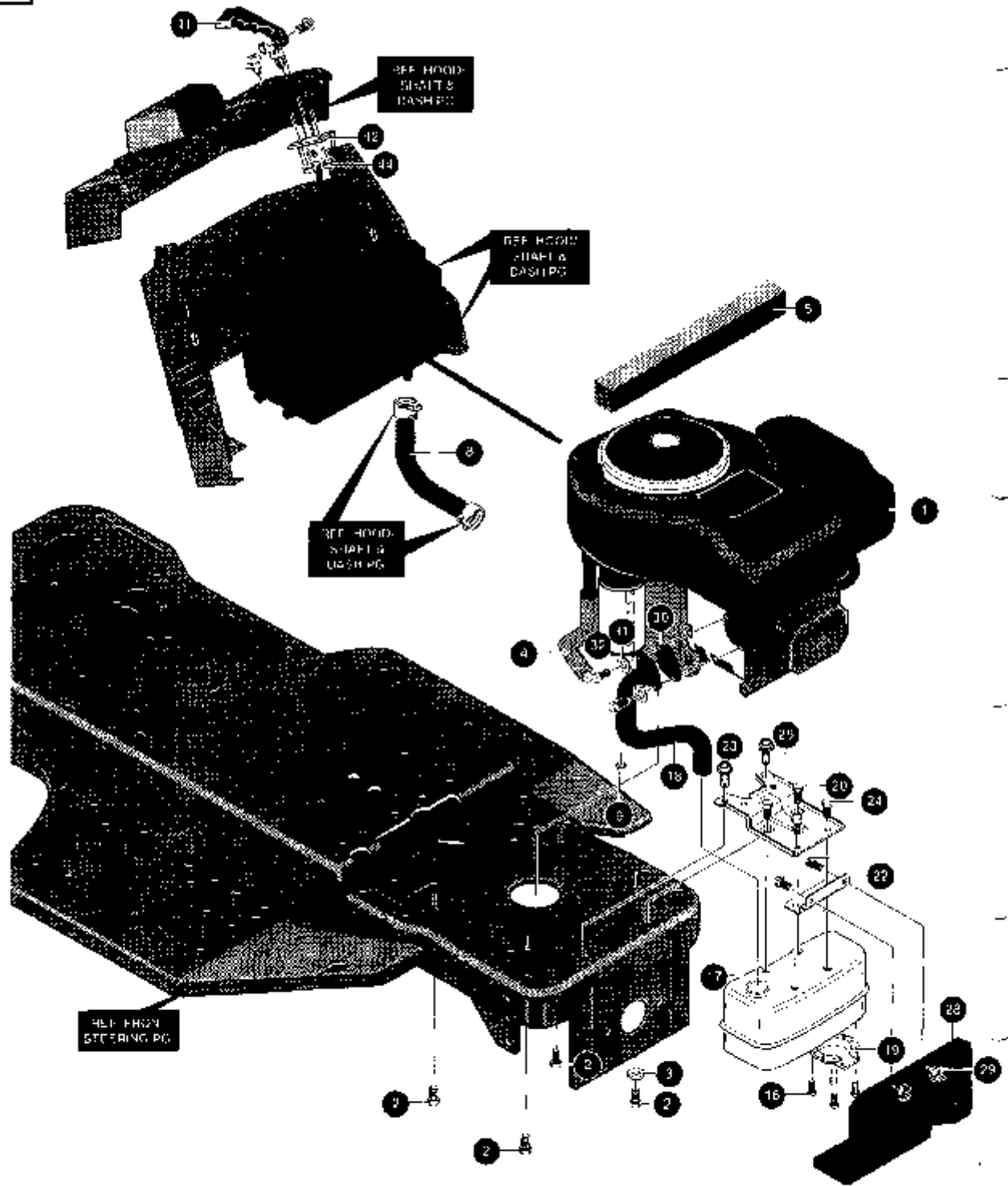




LT 4140 G

| KEY # | PART # | DESCRIPTION | QTY. |
|--------------|---------------|---------------------------------------|-------------|
| 1 | ENGINE | 14-16HP, VANGUARD (SEE ENGINE MANUAL) | 1 |
| 2 | 533 05 09-47 | SCREW, 3/8-16 X 1.25 WAHHTAPBLKP | 4 |
| 3 | 533 13 84-89 | WASHER, EXLK .384 X .69 X .04 | 1 |
| 4 | 533 30 71-74 | NIPPLE, 3/8-18 NPT X 4~ | 1 |
| 6 | 533 04 78-28 | CAP, PIPE 3/8-18 NPT | 1 |
| 8 | 506 66 42-01 | TUBING, .25 X .50 X BULK GAS LINE | 10 IN. |
| 9 | 533 12 48-18 | NUT, 1/4-20 REGHXJAM..... | 1 |
| 10 | 533 31 55-99 | REGULATOR, VOLTAGE, B&S, W/O SENSOR | 1 |
| 16 | 533 03 52-87 | SCREW, #8-32 X .38 HHWATAP | 4 |
| 17 | 533.30 55-53 | MUFFLER, 14/18HP, TWIN NLSN 22785C | 1 |
| 18 | 533 30 55-54 | EXHAUST TUBE, 15HP, RH, BBS, VANG | 1 |
| 19 | 533 05 64-72 | DEFLECTOR SIDE OUT (BS222573) | 1 |
| 20 | 533 30 55-55 | EXHAUST TUBE, 15HP, LH, B&S, VANG | 1 |
| 22 | 533 00 97-96 | BRACKET, TRANSAXLE | 1 |
| 23 | 533 03 54-97 | SCREW, 5/16-18 X .50 WAHHTAP... | 2 |
| 24 | 533 04 48-11 | SCREW, 1/4-20 X .75 WAHHTAP | 4 |
| 26 | 872 11 05-06 | BOLT, 5/16-18 X .63 CARRLN | 2 |
| 28 | 533 32 09-22 | SHIELD, MUFFLER HEAT TWIN | 1 |
| 29 | 533 05 52-73 | NUT, 5/16-18 HXWDFLLK | 2 |
| 31 | 533 31 47-97 | OIL SENSOR, B&S TWIN CYLINDER | 1 |
| 41 | 533 30 44-39 | KNOB, THROTTLE CTL MOLD | 1 |
| 42 | 533 30 73-62 | THROTTLE CONTROL, EURO 18, TWIN | 1 |
| 44 | 533 30 84-59 | NUT, #10-24 HXHDNYLK | 2 |
| 57 | 533 32 13-06 | HEAT SHIELD, V/G LT EURO..... | 1 |

H



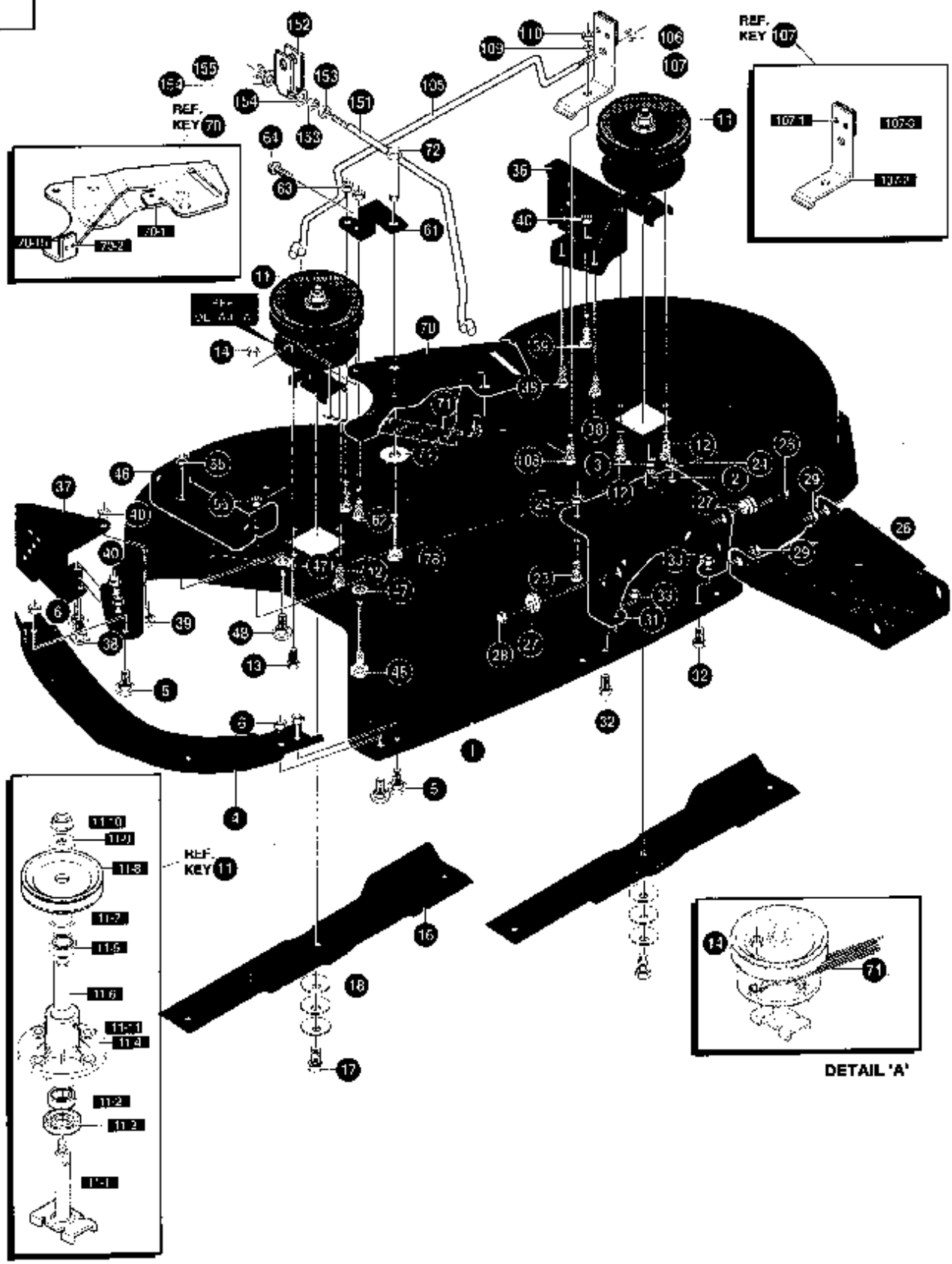


LI 4130 G

| KEY# | PART# | DESCRIPTION | QTY |
|------|--------------|---------------------------------------|-------|
| 1 | * | ENGINE, 13.0HP, B&S, VANGARD SINGLE | 1 |
| 2 | 533 05 09-47 | SCREW, 3/8-16 X 1.25 WAHHTAP, BLACK | 4 |
| 3 | 533 13 84-89 | WASHER, EXLK .384X .69 X .04 | 1 |
| 4 | 533 11 13-16 | ELBOW, 90° STREET 3/8 TPT | 1 |
| 5 | 533 30 81-15 | FOAM, HOOD BAFFLE | 1 |
| 8 | 506 66 42-01 | TUBING, .25 X .50 X BULK GAS LINE | 13.5" |
| 16 | 533 03 52-87 | SCREW, #8-32 X .38 HHWATAP | 4 |
| 17 | 533 32 63-24 | MUFFLER, 12/14HP, LOW BACK FIRE | 1 |
| 18 | 533 33 24-08 | TUBE, MUFFLER EXHAUST, B8S-OHV SINGLE | 1 |
| 19 | 533 05 64-72 | DEFLECTOR SIDE OUT (BS222573) | 1 |
| 20 | 533 99 53-46 | SCREW, 1/4-20 X .50 WAHHTAP | 2 |
| 22 | 533 00 97-96 | BRACKET, TRANSAXLE | 1 |
| 23 | 533 03 54-97 | SCREW, 5/16-18 X .50 WAHHTAP .. | 2 |
| 24 | 533 04 48-11 | SCREW, 1/4-20 X .75 WAHHTAP | 2 |
| 25 | 533 30 47-09 | BRACKET, MUFFLER | 1 |
| 26 | 872 11 05-06 | BOLT, 5/16-18 X .63 CARRLN | 2 |
| 28 | 533 33 24-21 | HEAT SHIELD, FRONT, IF/EURO ... | 1 |
| 29 | 533 05 52-73 | NUT, 5/16-18 WDFLLKLRG WHIZ ... | 2 |
| 30 | 533 04 67-08 | GASKET, MUFFLER | 1 |
| 31 | 533 12 06-38 | WASHER, HVSPTLK .328 X .60 X .09 | 2 |
| 32 | 533 18 00-77 | SCREW, 5/16-18 X .75 HHC | 2 |
| 41 | 533 30 44-39 | KNOB, THROTTLE CONTROL | 1 |
| 42 | 533 31 57-16 | THROTTLE CONTROL, 17.0- CHKOMA | 1 |
| 43 | | | |
| 44 | 533 30 84-59 | NUT, #10-24 HXHDNYLK | 2 |

* SEE ENGINE MANUAL

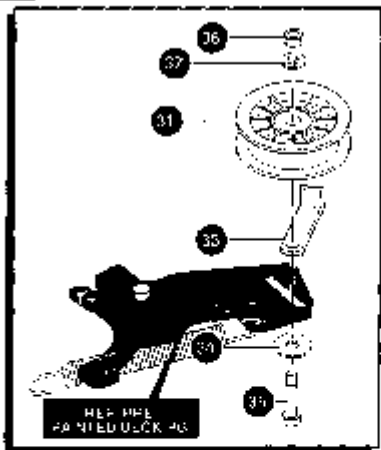
I



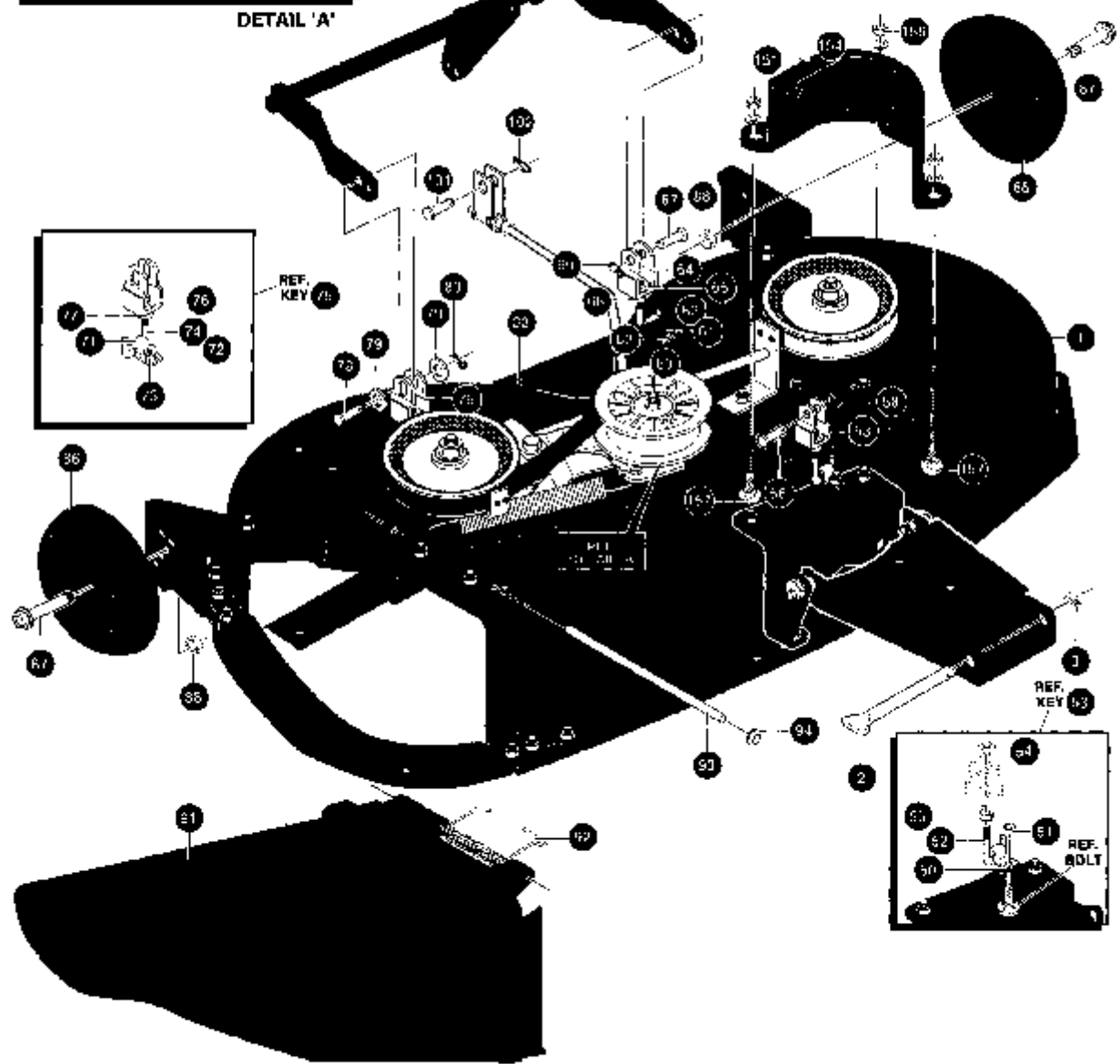
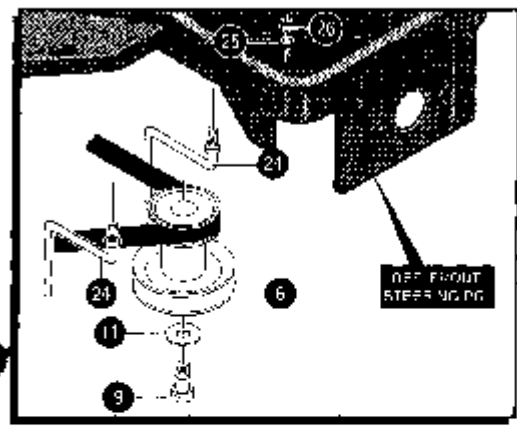


| KEY # | PART # | DESCRIPTION | QTY |
|-------|--------------|---|-----|
| 1 | 533 32 51-03 | 40~ DECK KIT | 1 |
| 2 | 533 18 00-77 | SCREW, 5/16-18 X .75 HHC | 1 |
| 3 | 533 00 14-98 | NUT, 5/16-18 REGHEXCTRLK | 1 |
| 4 | 533 32 64-80 | TOE GUARD - MULCHER..... | 1 |
| 5 | 872 11 05-06 | BOLT, 5/16-18 X .63 CARR | 3 |
| 6 | 533 00 14-98 | NUT, 5/16-18 REGHEXCTRLK | 3 |
| 11 | 533 31 77-05 | QUILL, 36139140143, W/ZERKS | 2 |
| 11-1 | 533 05 64-25 | SHAFT/SADDLE 36..... | 1 |
| 11-2 | 738 22 03-19 | BEARING, BALL 6203-A-C3 (SEAL) | 1 |
| 11-3 | 533 05 06-16 | DUST SHIELD | 1 |
| 11-4 | 533 05 07-02 | QUILL HOUSING, EXP | 1 |
| 11-5 | 533 04 95-62 | BEARINGG, BALL 6203-2AA (SEALS)-C3 | 1 |
| 11-6 | 533 05 08-18 | SPACER, SLEEVE .669 X .88 X 3.797 | 1 |
| 11-7 | 533 05 14-49 | SPACER, SLEEVE .672 X .93 X .438 | 1 |
| 11-8 | 533 31 38-98 | PULLEY, 26/36~ QUILL V5L | 1 |
| 11-9 | 533 05 63-65 | WASHER, SPECIALQUILL..... | 1 |
| 11-10 | 533 00 12-82 | NUT, 7/16-20 WDFLLK | 1 |
| 11-11 | 533 00 07-06 | ZERK, GREASE FITTING | 1 |
| 12 | 533 03 54-98 | SCREW, 5/16-18 X .75 WAHHTAP | 7 |
| 13 | 533 30 03-45 | SCREW, 5/16-18 X 1.38 WAHHTAP | 1 |
| 14 | 533 00 14-98 | NUT, 5/16-18 REGHEXCTRLK | 1 |
| 16 | 533 31 33-16 | BLADE, 40. STD-LIFT 20.32 | 2 |
| 17 | 533 03 95-73 | SCREW, 3/8-24 X 1.00 NYLHHC | 2 |
| 18 | 533 00 24-83 | WASHER, .39 ID X 1.25 D X .07 BELLVIL | 6 |
| 23 | 872 11 05-06 | BOLT, 5/16-18 X .63 CARR | 2 |
| 24 | 533 00 14-98 | NUT, 5/16-18 REGHEXCTRLK | 2 |
| 26 | 533 31 08-00 | CHANNEL DRAWBAR, 40., EURO | 1 |
| 27 | 533 05 82-47 | NUT, ADJUST | 2 |
| 28 | 533 18 00-79 | SCREW, 5/16-18 X 1.00 HHC | 2 |
| 29 | 533 00 14-98 | NUT, 5/16-18 REGHEXCTRLK | 2 |
| 31 | 533 31 23-42 | BRACKET, FRONT | 1 |
| 32 | 533 18 00-77 | SCREW, 5/16-18 X .75 HHC | 2 |
| 33 | 533 00 14-98 | NUT, 5/16-18 REGHEXCTRLK | 2 |
| 36 | 533 31 70-41 | BRACKET, GAGE WHEEL, LH | 1 |
| 37 | 533 31 70-18 | BRACKET, GUAGE WHEEL, RH | 1 |
| 38 | 533 18 00-77 | SCREW, 5/16-18 X .75 HHC | 4 |
| 39 | 872 11 05-06 | BOLT, 5/16-18 X .63 CARR | 2 |
| 40 | 533 00 14-98 | NUT, 5/16-18 REGHEXCTRLK | 6 |
| 46 | 533 31 70-17 | BRACKET, CHUTE MOUNT | 1 |
| 47 | 734 11 52-01 | WASHER, FLAT .469 X .92 X .065 | 2 |
| 48 | 872 11 05-06 | BOLT, 5/16-18 X .63 CARR | 2 |
| 55 | 533 00 14-98 | NUT, 5/16-18 REGHEXCTRLK | 2 |
| 61 | 533 32 68-93 | BRACE, IDLER SUPPORT 40~, 43~ | 1 |
| 62 | 533 18 00-77 | SCREW, 5/16-18 X .75 HHC | 2 |
| 63 | 533 04 41-08 | NUT, 5/16-18 HWDFLCTRLK | 2 |
| 70-1 | 533 32 21-16 | ARM, IDLER 40/43" DECK | 1 |
| 70-2 | 533 04 16-01 | RIVET, OVSET .187 DIA X .50 LONG | 2 |
| 70-3 | 533 30 69-73 | BRAKE PAD - HARD - 232 AF | 1 |
| 71 | 533 03 54-10 | SPRING, .071 X .62 X 4.37 | 1 |
| 72 | 533 30 44-20 | BOLT, .500 X 2.15 HHSH | 1 |
| 74 | 734 11 78-01 | WASHER, FLAT .391 X 1.00 X .209 | 1 |
| 78 | 873 22 06-00 | NUT, 3/8-16 HWDFLK MACK | 1 |
| 105 | 533 30 27-14 | ROD, BRAKE | 1 |
| 106 | 533 00 15-02 | NUT, 1 /4-20 REGHEXCTRLK | 1 |
| 107-1 | 533 13 56-24 | RIVET, TRSET .185 DIA X .41 LONG..... | 2 |
| 107-2 | 533 30 41-19 | BRAKE ARM..... | 1 |
| 107-3 | 533 30 69-73 | BRAKE PAD - HARD - 232 AF | 1 |
| 108 | 533 18 00-77 | SCREW, 5/16-18 X .75 HHC | 1 |
| 109 | 533 12 03-93 | WASHER, FLAT .344 X .69 X .065 | 1 |
| 110 | 533 00 14-98 | NUT, 5/16-18 REGHEXCTRLK | 1 |
| 151 | 533 30 30-72 | ROD, CLUTCH | 1 |
| 152 | 533 30 52-84 | CLEVIS, EURO | 1 |
| 153 | 533 12 03-76 | NUT, 5/16-18 REGHEX | 2 |
| 154 | 533 12 03-93 | WASHER, FLAT .344 X .69 X .065 | 2 |
| 155 | 533 00 14-98 | NUT, 5/16-18 REGHEXCTRLK | 1 |
| 156 | 533 05 74-44 | TIE, CABLE BLACK NYLON 5.62 LONG | 1 |

J

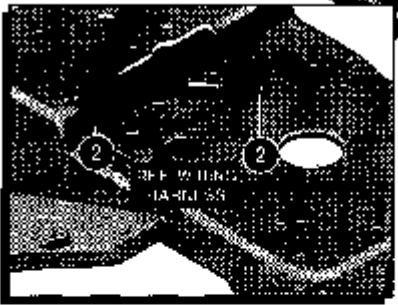
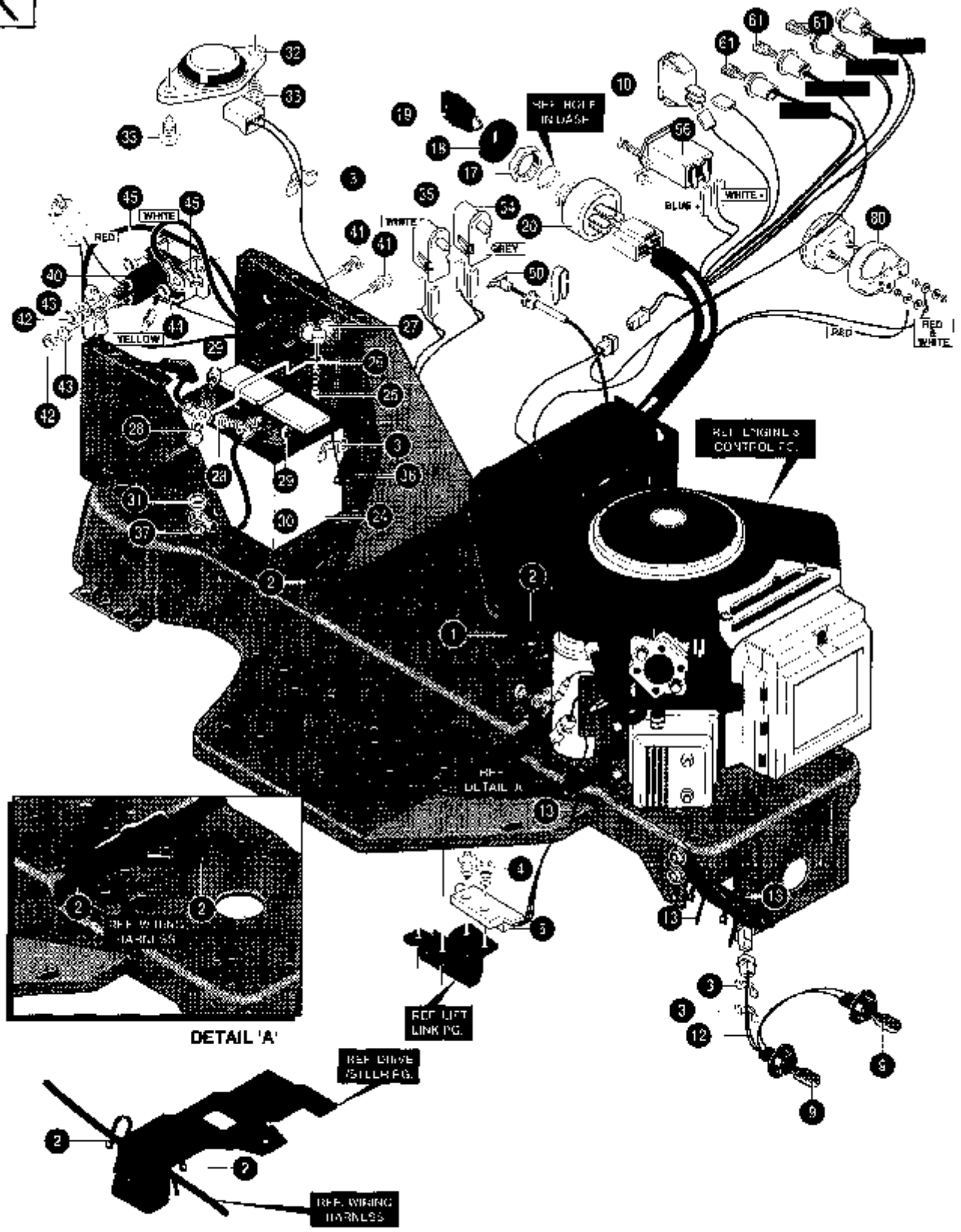


DETAIL 'A'



| KEY # | PART # | DESCRIPTION | QTY |
|-------|--------------|---|-----|
| 1 | 533 32 51-03 | MOWER DECK 40. KIT | 1 |
| 2 | 533 30 29-63 | ROD,DRAWBAR | 1 |
| 3 | 533 00 82-60 | PIN, HAIR .091 DIA X 1.66 LONG | 1 |
| 6 | 533 32 80-27 | PULLEY, ENGINE ASSY | 1 |
| 9 | 533 21 56-49 | SCREW, 7/16-20X5.50 HHC | 1 |
| 11 | 533 12 03-83 | WASHER,REGSPTLK.459X.78X.12..... | 1 |
| 24 | 533 30 04-40 | GUIDE, BELT, RIDER | 2 |
| 25 | 533 13 85-38 | WASHER, REGINTLK .320 X .61 X .03 | 2 |
| 26 | 533 00 14-98 | NUT, 5/16-18 REGHEXCTRLK | 2 |
| 31 | 533 31 03-26 | PULLEY, IDLER BFF 4.00 WIDE FL | 1 |
| 32 | 533 04 80-44 | BELT, V 5L 82.00 DECK, DR | 1 |
| 33 | 533 00 13-46 | RETAINER, BELT | 1 |
| 34 | 533 44 63-63 | WASHER, FLAT .375 X .88 X .082 | 1 |
| 35 | 533 05 73-25 | BOLT, 3/8-16 X 2.00 CARR | 1 |
| 36 | 533 12 03-77 | NUT, 3/8-16 REGHEX | 1 |
| 37 | 533 12 03-82 | WASHER, REGSPTLK .393 X .68 X .10..... | 1 |
| 50 | 533 31 98-68 | CLIP, 40/46" HANGER | 1 |
| 51 | 533 00 14-98 | NUT, 5/16-18 REGHEXCTRLK | 1 |
| 52 | 533 30 96-15 | ROD, 40~, REAR DECK LIFT | 1 |
| 53 | 533 30 44-43 | CLEVIS | 1 |
| 54 | 533 10 95-27 | NUT, 1/2-13 .458 SQUARE | 1 |
| 55 | 533 12 02-38 | NUT, 1/2-13 HEXJAM | 1 |
| 56 | 533 30 03-17 | PIN, CLEVIS .375 DIA X .81 LONG..... | 1 |
| 57 | 533 12 03-94 | WASHER, FLAT .406 X .81 X .065 ... | 1 |
| 58 | 533 00 82-60 | PIN, HAIR .091 DIA X 1.66 LONG | 1 |
| 60 | 533 31 98-68 | CLIP, 40/46 HANGER | 1 |
| 61 | 872 11 05-06 | BOLT, 5/16-18 X .75 CARR | 1 |
| 62 | 533 00 14-98 | NUT, 5/16-18 REGHEXCTRLK | 1 |
| 63 | 533 31 23-02 | ROD, 40., REAR DECK LIFT | 1 |
| 64 | 533 30 44-43 | CLEVIS | 1 |
| 65 | 533 10 95-27 | NUT, 1/2-13 .458 SQUARE | 1 |
| 66 | 533 12 02-38 | NUT, 1/2-13 HEXJAM | 1 |
| 67 | 533 30 03-17 | PIN, CLEVIS .375 DIA X .81 LONG | 1 |
| 68 | 533 12 03-94 | WASHER, FLAT .406 X .81 X .065 | 1 |
| 69 | 533 00 82-60 | PIN, HAIR .091 DIA X 1.66 LONG | 1 |
| 71 | 533 31 98-68 | CLIP, 40/46~, HANGER | 1 |
| 72 | 533 18 00-77 | SCREW, 5/16-18 X .75 HHC | 1 |
| 73 | 533 00 14-98 | NUT, 5/16-18 REGHEXCTRLK | 1 |
| 74 | 533 30 96-15 | ROD, 40n, REAR DECK LIFT | 1 |
| 75 | 533 30 52-83 | CLEVIS, SLOT EURO | 1 |
| 76 | 533 10 95-27 | NUT, 1/2-13 .458 SQUARE | 1 |
| 77 | 533 12 02-38 | NUT, 1/2-13 HEXJAM | 1 |
| 78 | 533 30 03-17 | PIN, CLEVIS .375 DIA.X .81 LONG | 1 |
| 79 | 533 12 03-94 | WASHER, FLAT .406 X .81 X .065 | 1 |
| 80 | 533 00 82-60 | PIN, HAIR .091 DIA X 1.66 LONG | 1 |
| 86 | 533 30 26-11 | GAUGE WHEEL, EURO, 6.00 OD X 1.38 WIDE | 2 |
| 87 | 533 02 37-63 | BOLT, .500 X 1.390 HSH 3/8-16 | 2 |
| 88 | 533 00 14-99 | NUT, 3/8-16 REGHXCTRLK..... | 2 |
| 91 | 533 30 44-22 | CHUTE DEFLECTOR, 40., 42" & 43~ | 1 |
| 92 | 533 31 49-75 | SPRING, TORSION, CHUTE DEFLECTOR | 1 |
| 93 | 533 30 44-24 | ROD, PIVOT DECK .312 D X 7.25 | 1 |
| 94 | 533 00 35-35 | NUT, PUSH ON CAP .312 OD | 1 |
| 101 | 533 04 93-32 | PIN, CLEVIS .375 D X .81 LONG | 1 |
| 102 | 533 00 82-60 | PIN, HAIR .091 DIA X 1.66 LONG | 1 |
| 151 | 533 32 82-57 | GUARD, BELT LH, PLASTIC | 1 |
| 152 | 533 18 00-77 | SCREW, 5/16-18 X .75 HHC | 1 |
| 154 | 533 12 03-93 | WASHER, FLAT .344 X .69 X .065 | 3 |
| 156 | 533 00 14-98 | NUT, 5/16-18 REGHEXCTRLK | 3 |
| 157 | 872 11 05-06 | BOLT, 5/16-18 X .63 CARR | 2 |

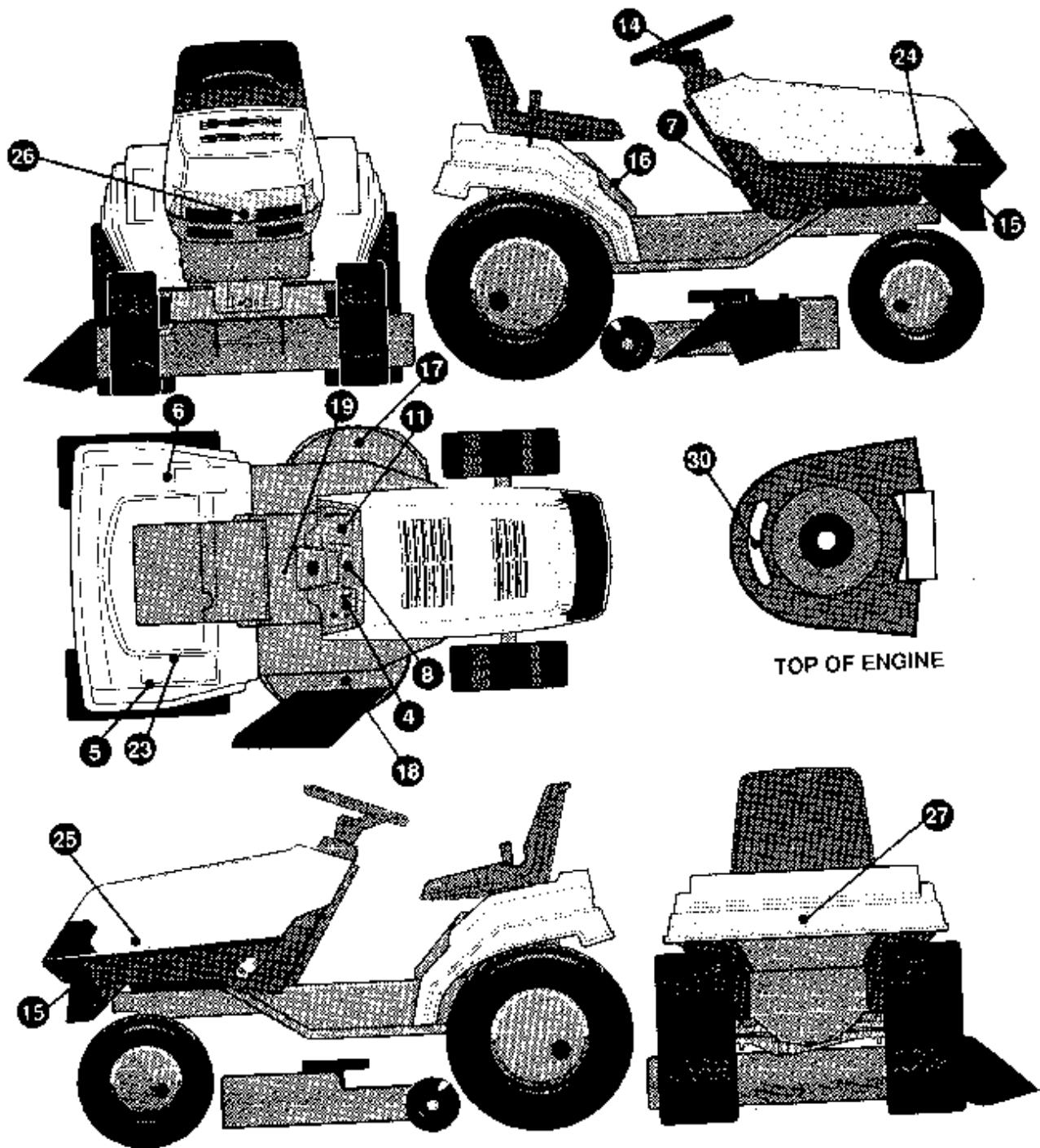
K





| KEY # | PART # | DESCRIPTION | QTY. |
|-------|--------------|--|------|
| 1 | 533 33 19-30 | HARNESS WIRING EURO B&S VTWIN | 1 |
| 2 | 533 05 74-44 | TIES CABLE BLACK NYLON 5-62 LONG | 6 |
| 3 | 533 04 14-82 | PRESS CLIP 1~380 LONG ~255 IDS | 3 |
| 4 | 533 05 72-20 | SCREW #12 X ~50 PHPNHTAP BLACK | 2 |
| 5 | 533 05 74-76 | SWITCH SCREW MOUNT DP~ NC NO BLK | 1 |
| 9 | 533 05 25-72 | BULB HEADLAMP | 2 |
| 10 | 533 30 03-34 | LIGHT SWITCH ON/OFF PANEL MOUNT | 1 |
| 12 | 533 30 30-64 | ASSEMBLY LIGHT WIRE-1/4 TURN | 1 |
| 13 | 533 05 74-44 | TIES CABLE BLACK NYLON 5-62 LONG | 3 |
| 17 | 533 32 73-52 | NUT 5/8-8 ACME DELTA FOR BOOT | 1 |
| 18 | 533 30 01-94 | BOOT IGNITION SWITCH | 1 |
| 19 | 533 32 73-50 | KEY IGNITION DELTA..... | 2 |
| 20 | 533 32 73-55 | SWITCH-IGNITION (AFTER FIRE) 3 POSITION..... | 1 |
| 24 | 506 78 88-01 | BATTERY, 8 PLATE MAINTENANCE FREE | 1 |
| 25 | 533 05 75-51 | ROD BATTERY | 1 |
| 26 | 533 30 29-12 | RODBATTERYTOP~209 DIA | 1 |
| 27 | 533 32 52-32 | NUT WING 1/4-20NYLON | 1 |
| 28 | 874 76 04-12 | SCREW 1/4-20 X ~75 HHC | 2 |
| 29 | 533 27 11-72 | NUT 1/4-20 REGHEXKEPS | 2 |
| 30 | 533 05 55-11 | WIRE GROUND 12-5-E..... | 1 |
| 31 | 533 27 11-84 | NUT 5/16-18 HEXKEPS | 1 |
| 32 | 533 05 75-47 | SWITCH, SEAT | 1 |
| 33 | 506 55 80-01 | SCREW 1/4-20 X ~38 PHPNHMA..... | 2 |
| 34 | 533 32 66-54 | SWITCH SNAP MNT NC ~140 BLUE | 1 |
| 35 | 533 32 66-53 | SWITCH SNAP MNT NO ~055/~116 GRAY | 1 |
| 36 | 533 05 74-44 | TIES CABLE BLACK NYLON 5-62 LONG | 2 |
| 37 | 533 13 84-89 | WASHER EXLK 384X69X 04 | 1 |
| 40 | 533 05 37-16 | SOLENOID | 1 |
| 41 | 533 18 77-45 | SCREW 1/4-20 X ~75 HXSEMMA | 2 |
| 42 | 533 12 03-68 | NUT 5/16-24 REGHEX..... | 2 |
| 43 | 533 13 84-85 | WASHER EXLK ~320 X ~61 X 03 | 2 |
| 44 | 533 27 11-72 | NUT 1/4-20 REGHEXKEPS | 1 |
| 45 | 533 00 15-02 | NUT 1/4-20 REGHEXCTRLK | 2 |
| 50 | 533 30 71-13 | CHOKE CONTROL B&S~ TWIN EURO LONG | 1 |
| 56 | 506 89 15-01 | MINIATURE HOUR METER 4-40V DC | 1 |
| 61 | 533 05 77-69 | BULB INDICATOR | 3 |
| 80 | 533 31 59-02 | AMMETER ASSEMBLY | 1 |

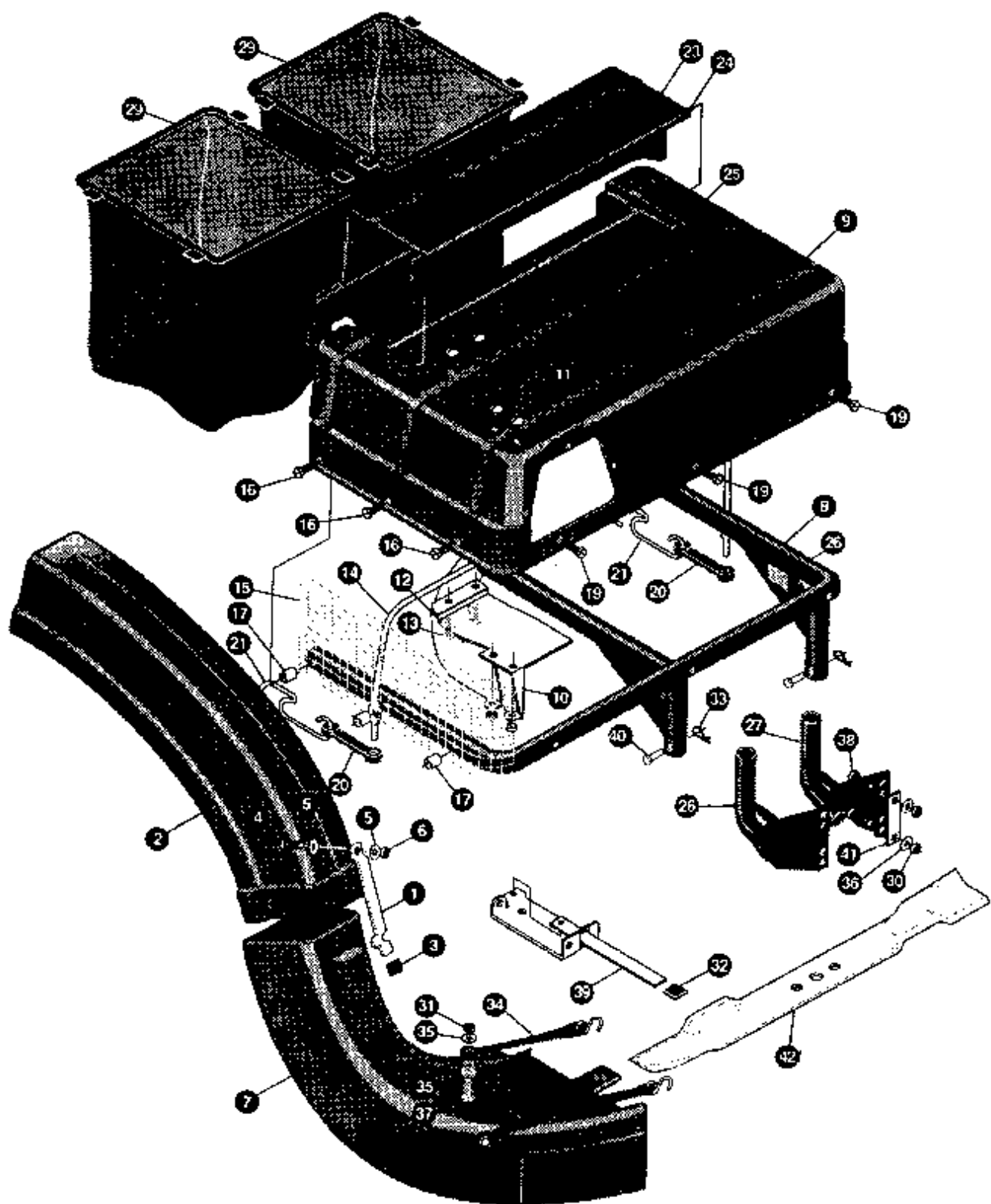
L





| KEY # | PART # | DESCRIPTION | QTY: |
|-------|--------------|---|------|
| 4 | 533 33 18-17 | DECAL, DASH RH ISO CH, HR, LS, IS | 1 |
| 5 | 533 30 78-17 | DECAL, SHIFT INDICATOR EXPORT | 1 |
| 6 | 533 31 68-51 | DECAL, EXPORT BL.CL. ~ DECK HT..... | 1 |
| 7 | 533 30 78-20 | DECAL PARK BRAKE EXPORT | 1 |
| 8 | 533 33 20-96 | DECAL DASH, OIL, FUEL, ASG, NO CHG | 1 |
| 11 | 533 33 18-07 | DECAL, DASH, LH, ISO, AMM, M/CL, M/CH | 1 |
| 14 | 533 33 20-58 | DECAL, GUNSIGHT CENT. 3 SPOKE | 1 |
| 15 | 533 31 17-30 | DECAL, WHEEL 4 STEER HUSQ. BUM..... | 2 |
| 16 | 533 31 17-31 | DECAL,LAWNTRACTOR,SEATSUPPORT | 1 |
| 17 | 533 40 27-00 | DECAL CAUTION DECK LH | 1 |
| 18 | 533 40 27-01 | DECAL CAUTION DECK RH | 1 |
| 19 | 533 40 26-89 | DECAL, CONSOLE SYMBOLIC CAUTION | 1 |
| 20 | 533 32 08-45 | DECAL, ENTER & EXIT 11/LANG | 1 |
| 23 | 533 31 68-86 | DECAL, GEAR SHIFT 6 SPEED EURO | 1 |
| 24 | 533 32 21-72 | DECAL, HOOD HUSQVARNA, RH | 1 |
| 25 | 533 32 21-73 | DECAL, HOOD HUSQVARNA, LH | 1 |
| 26 | 533 32 21-74 | DECAL GRILLE, HUSQVARNA | 1 |
| 27 | 533 32 21-75 | DECALREAR FENDER, HUSQVARNA | 1 |

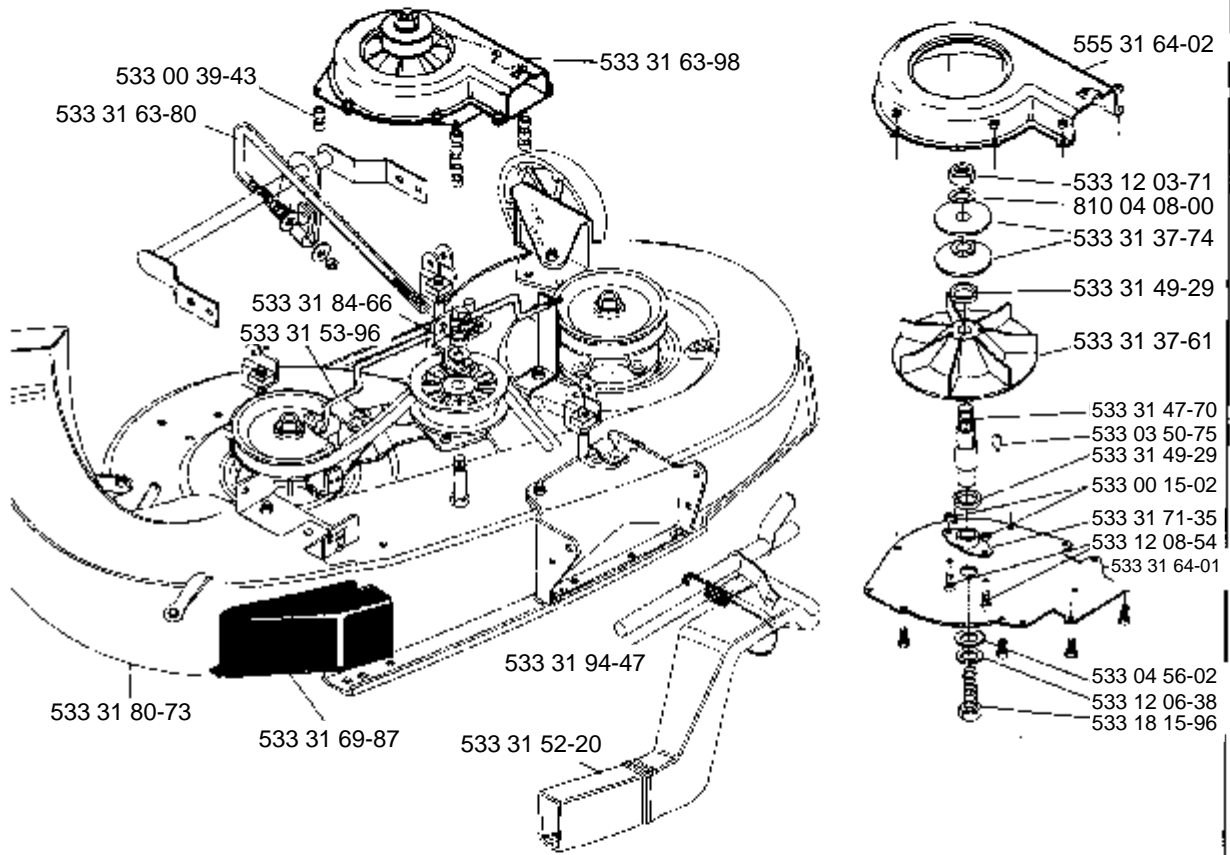
M





| KEY # | PART # | DESCRIPTION | QTY. |
|-------|--------------|---------------------------------------|------|
| 1 | 533 32 24-94 | LATCH CHUTE | 1 |
| 2 | 533 32 24-95 | CHUTE, UPPER 40&46 BAGGER | 1 |
| 3 | 533 04 23-48 | GRIP-LEVER GRASS COLLECTOR | 1 |
| 4 | 533 12 18-87 | SCREW 1/4-20X .75 HHC GR2 | 1 |
| 5 | 734 11 52-01 | WASHER, FLAT .28X1.25X.06 | 2 |
| 6 | 533 00 15-02 | NUT, 1/4 REGHEXCTRLK | 1 |
| 7 | 533 31 80-73 | CHUTE, LOWER 40~/43~ DECK, MOD | 1 |
| 8 | 533 32 29-80 | WP TUBE ASSY, SUPPORT (DBL-GST) | 1 |
| 9 | 533 30 92-95 | TOP COVER ERO BAGGER | 1 |
| 10 | 533 30 51-97 | BAFFLE GRASS CATCHER EURO | 1 |
| 11 | 533 05 56-86 | SCREW 1/4-20X .63 SLTRMA BLK | 4 |
| 12 | 533 12 03-92 | WASHER, FLAT .281X .63X0.65 | 4 |
| 13 | 533 27 11-72 | NUT, 1/4-20 REGHXEXKEPS | 4 |
| 14 | 533 30 91-59 | MP SUPPORT ROD, COVER | 1 |
| 15 | 533 30 62-62 | SCREEN ERO BAGGER 6.0X 18.25 | 1 |
| 16 | 533 30 64-87 | SCREW, 1/4-20X1.50 HHTAP GR5 | 3 |
| 17 | 533 30 60-79 | SPACER, BAGGER .87X7/16X.060 | 2 |
| 19 | 533 04 48-11 | SCREW 1/4-20X .75 HXWATAP | 6 |
| 20 | 533 05 75-05 | RUBBER STRAP | 2 |
| 21 | 533 30 96-48 | HOLD DOWN,RUBBER STRAP | 2 |
| 23 | 533 30 93-20 | TOPP LID PIVOTING..... | 1 |
| 24 | 533 31 01-94 | ROD, GRASS CATCHER PIVOT 953 | 1 |
| 25 | 533 12 12-23 | PIN, COTTER .0625X.75LG | 2 |
| 27 | 533 32 35-55 | ASSY GRASS CATCHER MT.LH..... | 1 |
| 28 | 533 32 35-56 | ASSY GRASS CATCHER MT.RH | 1 |
| 29 | 533 32 21-57 | BAG, GRASS CATCHER ERC (LONG) | 2 |
| 30 | 533 00 14-98 | NUT 5/16-18 REGHEXCTRLK | 4 |
| 31 | 533 00 15-02 | NUT 1/4-20 REGHEXCTRLK..... | 2 |
| 32 | 533 04 23-48 | GRIP-LEVER GRASS COLLECTOR | 1 |
| 33 | 533 05 61-80 | PIN, HAI R .091 DIAX1.62LG | 2 |
| 34 | 533 05 75-05 | RUBBER STRAP | 2 |
| 35 | 533 12 03-92 | WASHER, FLAT .281X .63X.065 | 4 |
| 36 | 533 12 03-93 | WASHER, FLAT .344X .69X.065 | 4 |
| 37 | 533 12 19-00 | SCREW, 1/4-20X1.00 HHC GR2 | 2 |
| 38 | 874 78 05-16 | SCREW, 5/16-18X1.00 HHC BG8 | 5 |
| 39 | 533 32 23-20 | LEVER ASSY (SHORT) | 1 |
| 40 | 533 30 86-19 | PIN, CLEVIS .25X1.75 | 2 |
| 41 | 533 31 51-63 | BRKT. PLATE BAGGER | 2 |
| 42 | 533 30 90-70 | BLADE, 20.32 HIGH LIFT..... | 2 |

N



MODEL NUMBER 4140G

| PART NUMBER | SQUARE | NOTE | PART NUMBER | SQUARE | NOTE | PART NUMBER | SQUARE | NOTE | PART NUMBER | SQUARE | NOTE |
|--------------|-------------|------|--------------|---------|------|--------------|--------|------|--------------|--------|------|
| 506 55 80-01 | K | | 533 05 55-11 | K | | 533 30 03-34 | K | | 533 30 44-44 | C | N |
| 506 56 56-01 | K | | 533 05 56-86 | M | | 533 30 03-45 | I | | 533 30 44-48 | F | |
| 506 66 42-01 | GH | | 533 05 60-30 | BC | | 533 30 04-40 | J | | 533 30 44-81 | B | |
| 506 78 88-01 | K | | 533 05 61-80 | JM | | 533 30 11-40 | C | | 533 30 47-09 | GM | |
| 506 89 15-01 | K | | 533 05 62-56 | E | | 533 30 17-39 | F | | 533 30 47-28 | C | |
| 533 00 06-42 | C | | 533 05 63-65 | J | | 533 30 22-05 | F | | 533 30 47-29 | F | |
| 533 00 07-06 | CI | | 533 05 64 25 | I | | 533 30 22-06 | F | | 533 30 47-30 | F | |
| 533 00 12-82 | I | | 533 05 64-72 | GM | | 533 30 22-08 | F | | 533 30 49-67 | F | |
| 533 00 13-46 | J | | 533 05 69-07 | B | | 533 30 23-07 | A | | 533 30 51-97 | M | |
| 533 00 14-98 | ABCDEFGHI | | 533 05 71-57 | E | | 533 30 23-14 | A | | 533 30 52-80 | C | |
| 533 00 14-99 | CEJ | | 533 05 71-58 | C | | 533 30 23-19 | E | | 533 30 52-83 | J | |
| 533 00 15-02 | ABCDEFGHIKM | | 533 05 72-20 | K | | 533 30 23-21 | C | | 533 30 52-84 | I | |
| 533 00 24-83 | CI | | 533 05 73-25 | FI | | 533 30 23-31 | A | | 533 30 53-06 | F | |
| 533 00 29-68 | A | | 533 05 74-44 | IK | | 533 30 23-36 | E | | 533 30 53-39 | C | |
| 533 00 35-35 | J | N | 533 05 74-76 | K | | 533 30 23-38 | F | | 533 30 53-40 | C | |
| 533 00 39-43 | N | | 533 05 75-06 | M | | 533 30 23-57 | G | | 533 30 53 81 | B | |
| 533 00 82-60 | J | M | 533 05 75-47 | K | N | 533 30 23-60 | F | | 533 30 53-82 | F | |
| 533 00 97-96 | GH | | 533 05 75-51 | K | | 533 30 23-79 | F | | 533 30 54-24 | B | |
| 533 01 22-80 | D | | 533 05 77-69 | K | | 533 30 23-80 | G | | 533 30 55-20 | A | |
| 533 01 22-89 | D | | 533 05 82-47 | I | | 533 30 23-83 | F | | 533 30 55-22 | G | |
| 533 01 23-19 | D | | 533 05 83-25 | F | | 533 30 24-98 | A | | 533 30 55-53 | G | |
| 533 01 23-25 | D | | 533 05 83-26 | F | | 533 30 25-24 | A | | 533 30 55-54 | G | |
| 533 01 24-65 | D | | 533 05 83-30 | F | | 533 30 25-38 | E | | 533 30 55-55 | G | |
| 533 01 24-66 | D | | 533 05 83-32 | F | | 533 30 25-82 | E | | 533 30 57-70 | L | |
| 533 01 24-67 | D | | 533 07 10-46 | E | | 533 30 25-83 | D | | 533 30 57-78 | K | |
| 533 01 24-01 | A | | 533 07 11-00 | A | | 533 30 25-88 | D | | 533 30 58-20 | A | |
| 533 02 05-07 | F | | 533 10 95-77 | J | | 533 30 25-93 | D | | 533 30 58-50 | A | |
| 533 02 08-64 | A | | 533 11 13-16 | H | | 533 30 25-94 | D | | 533 30 59-89 | F | |
| 533 02 16-82 | D | | 533 12 02-38 | FJ | | 533 30 26-11 | J | | 533 30 60-79 | M | |
| 533 02 20-53 | D | | 533 12 03-68 | K | | 533 30 27-14 | I | | 533 30 62-62 | M | |
| 533 02 37-63 | J | | 533 12 03-69 | C | | 533 30 28-77 | D | | 533 30 63-91 | F | |
| 533 02 41-67 | CD | | 533 12 03-71 | N | | 533 30 28-78 | D | | 533 30 63-97 | B | N |
| 533 02 50-80 | AE | | 533 12 03-76 | I | | 533 30 28-97 | R | | 533 30 63-99 | B | |
| 533 02 51-77 | D | | 533 12 03-77 | EJ | | 533 30 29-07 | C | | 533 30 64-87 | M | |
| 533 03 02-89 | E | M | 533 12 03-82 | CDJ | | 533 30 29-08 | C | | 533 30 64-89 | L | |
| 533 03 50-75 | N | | 533 12 03-83 | J | | 533 30 29-12 | K | | 533 30 65-69 | C | |
| 533 03 52-87 | GH | | 533 12 03-85 | BEF | | 533 30 29-63 | J | | 533 30 65-70 | D | |
| 533 03 54-10 | EL | | 533 12 03 92 | AEM | | 533 30 30 64 | K | | 533 30 66-69 | CD | |
| 533 03 54-97 | AHDEFGH | | 533 12 03-93 | BDJLM | | 533 30 30-77 | I | | 533 30 68-52 | L | |
| 533 03 54-98 | BDT | | 533 12 03-94 | FFJ | | 533 30 31-09 | D | | 533 30 68-58 | A | |
| 533 03 63-11 | D | | 533 12 06-38 | BHM | | 533 30 32-22 | D | | 533 30 69-73 | I | |
| 533 03 63-68 | BE | | 533 12 08-54 | N | | 533 30 32-27 | F | | 533 30 71-12 | C | |
| 533 03 66-25 | C | | 533 12 12-22 | G | | 533 30 32-28 | A | | 533 30 71-13 | K | |
| 533 03 95-73 | J | | 533 12 12-23 | EM | | 533 30 32-30 | F | | 533 30 71-74 | G | |
| 533 04 02-23 | E | | 533 12 18-87 | M | | 533 30 32-41 | D | | 533 30 73-62 | G | |
| 533 04 14-82 | K | | 533 12 19-00 | N | | 533 30 40-25 | E | | 533 30 73-85 | F | |
| 533 04 16-01 | I | | 533 12 49-25 | DD | | 533 30 40-49 | E | | 533 30 78-17 | L | |
| 533 04 23-48 | N | | 533 13 84-85 | K | | 533 30 40-83 | E | | 533 30 78-20 | L | |
| 533 04 41-08 | DFT | | 533 13 84-89 | GH | | 533 30 40-86 | E | | 533 30 81-14 | H | |
| 533 04 48-11 | BGHM | | 533 13 85-38 | J | | 533 30 41-05 | E | | 533 30 81-88 | F | |
| 533 04 51-71 | E | | 533 18 00-16 | F | | 533 30 41-15 | D | | 533 30 83-84 | D | |
| 533 04 52-63 | A | | 533 18 00-77 | BCDFHJL | | 533 30 41-16 | D | | 533 30 83-99 | D | |
| 533 04 56-02 | DFN | | 533 18 00-79 | DI | | 533 30 41-18 | J | | 533 30 84-46 | D | |
| 533 04 67-08 | H | | 533 18 01-34 | CF | | 533 30 41-19 | I | N | 533 30 84-47 | D | |
| 533 04 78-28 | G | | 533 18 15-96 | N | | 533 30 41-20 | D | | 533 30 84-59 | GH | |
| 533 04 80-44 | J | | 533 18 16-46 | D | | 533 30 41-21 | D | | 533 30 86-19 | M | |
| 533 04 83-06 | F | | 533 18 16-83 | D | | 533 30 41 22 | D | | 533 30 87-19 | D | |
| 533 04 93-32 | J | | 533 18 17-09 | II | | 533 30 41-25 | F | | 533 30 87-20 | D | |
| 533 05 05-16 | I | | 533 18 77-45 | K | | 533 30 41-30 | C | | 533 30 88-97 | A | |
| 533 05 07 02 | I | | 533 27 11 72 | KM | | 533 30 42 08 | E | | 533 30 88-98 | A | |
| 533 05 07-95 | D | | 533 27 11-84 | FK | | 533 30 42-09 | F | | 533 30 90-70 | IM | |
| 533 05 08-18 | I | | 533 27 11-90 | G | | 533 30 42-12 | E | | 533 30 91-59 | H | |
| 533 05 09-47 | CH | | 533 27 46-54 | D | | 533 30 42-17 | C | | 533 30 92-35 | B | |
| 533 05 11-89 | E | | 533 30 01-71 | F | | 533 30 42-59 | D | | 533 30 92-95 | H | |
| 533 05 13-35 | HE | | 533 30 01-94 | K | | 533 30 42-60 | D | | 533 30 93-20 | M | |
| 533 05 14-49 | I | | 533 30 03-02 | AH | | 533 30 43-67 | E | | 533 30 95-46 | C | |
| 533 05 21-51 | A | | 533 30 03-03 | A | | 533 30 44-20 | I | | 533 30 96-15 | J | |
| 533 05 25-72 | K | | 533 30 03-10 | F | | 533 30 44-22 | J | | 533 30 96-48 | M | |
| 533 05 36-52 | C | | 533 30 03-11 | F | | 533 30 44-24 | J | | 533 31 01-94 | M | |
| 533 05 37-16 | K | | 533 30 03-17 | J | | 533 30 44-39 | GH | | 533 31 03-26 | J | |
| 533 05 52-73 | BCFGH | | 533 30 03-28 | C | | 533 30 44-43 | J | | 533 31 03-84 | B | |

N-New part
 Neues Teil
 Nouvelle piece
 Nueva pieza
 Ny detalj

MODEL NUMBER 41406

| PART NUMBER | SQUARE | NOTE | PART NUMBER | SQUARE | NOTE | PART NUMBER | SQUARE | NOTE | PART NUMBER | SQUARE | NOTE |
|--------------|--------|------|--------------|--------|------|-------------|--------|------|-------------|--------|------|
| 533 31 05-53 | L | | 533 32 23-20 | M | | | | | | | |
| 533 31 05-76 | B | | 533 32 24-94 | M | | | | | | | |
| 533 31 06-70 | C | | 533 32 24-95 | N | | | | | | | |
| 533 31 08-00 | I | | 533 32 28-59 | L | | | | | | | |
| 533 31 10-66 | L | | 533 32 29-80 | M | | | | | | | |
| 533 31 10-87 | B | N | 533 32 35-55 | M | | | | | | | |
| 533 31 17-30 | L | | 533 32 35-56 | M | | | | | | | |
| 533 31 17-31 | L | | 533 32 37-31 | A | | | | | | | |
| 533 31 23-02 | J | | 533 32 37-43 | D | | | | | | | |
| 533 31 23-42 | I | | 533 32 45-78 | D | | | | | | | |
| 533 31 27-01 | F | | 533 32 47-95 | A | | | | | | | |
| 533 31 32-71 | F | | 533 32 51-03 | T | | | | | | | |
| 533 31 33-16 | I | | 533 32 52-32 | K | | | | | | | |
| 533 31 37-61 | M | | 533 32 63-24 | H | | | | | | | |
| 533 31 37-74 | N | | 533 32 64-80 | I | | | | | | | |
| 533 31 38-98 | I | | 533 32 66-53 | K | | | | | | | |
| 533 31 44-16 | C | | 533 32 66-54 | K | | | | | | | |
| 533 31 47-70 | N | | 533 32 68-93 | I | | | | | | | |
| 533 31 47-97 | G | | 533 32 73-50 | K | | | | | | | |
| 533 31 48-88 | B | | 533 32 73-52 | K | | | | | | | |
| 533 31 48-89 | B | | 533 32 73-55 | K | | | | | | | |
| 533 31 49-29 | N | | 533 32 76-15 | J | | | | | | | |
| 533 31 49-75 | J | | 533 32 76-16 | J | | | | | | | |
| 533 31 51-63 | M | | 533 32 78-31 | B | | | | | | | |
| 533 31 52-20 | N | | 533 32 80-26 | J | | | | | | | |
| 533 31 53-96 | N | | 533 32 80-27 | J | N | | | | | | |
| 533 31 55-99 | G | | 533 32 82-57 | J | | | | | | | |
| 533 31 57-16 | M | | 533 33 04-63 | B | N | | | | | | |
| 533 31 59-02 | K | | 533 33 08-47 | A | | | | | | | |
| 533 31 63-80 | N | | 533 33 11-84 | A | | | | | | | |
| 533 31 63-98 | N | | 533 33 13-79 | A | | | | | | | |
| 533 31 64-01 | N | | 533 33 18-07 | L | | | | | | | |
| 533 31 64-02 | N | | 533 33 18-17 | L | | | | | | | |
| 533 31 67-02 | C | N | 533 33 19-30 | K | | | | | | | |
| 533 31 68-51 | L | | 533 33 20-43 | K | | | | | | | |
| 533 31 68-86 | L | | 533 33 20-58 | L | | | | | | | |
| 533 31 68-97 | N | | 533 33 20-96 | L | | | | | | | |
| 533 31 69-87 | N | | 533 33 21-13 | A | N | | | | | | |
| 533 31 70-17 | I | | 533 33 21-33 | A | | | | | | | |
| 533 31 70-18 | I | | 533 33 21-37 | L | | | | | | | |
| 533 31 70-19 | C | | 533 33 21-38 | L | | | | | | | |
| 533 31 70-41 | T | | 533 33 24-00 | M | | | | | | | |
| 533 31 71-35 | M | | 533 33 24-21 | H | | | | | | | |
| 533 31 77-05 | I | | 533 40 26-89 | L | N | | | | | | |
| 533 31 80-73 | M | | 533 40 27-00 | L | N | | | | | | |
| 533 31 83-04 | A | | 533 40 27-01 | L | N | | | | | | |
| 533 31 84-66 | N | | 533 41 23-49 | D | | | | | | | |
| 533 31 93-87 | B | | 533 42 10-51 | D | | | | | | | |
| 533 31 93-88 | B | | 533 42 86-44 | J | | | | | | | |
| 533 31 94-47 | N | | 533 44 63-63 | DJ | | | | | | | |
| 533 31 96-86 | C | N | 533 45 63-78 | A | | | | | | | |
| 533 31 98-68 | J | | 533 45 67-22 | D | | | | | | | |
| 533 32 05-31 | D | | 533 99 53-46 | AH | | | | | | | |
| 533 32 08-42 | L | | 533 99 64-16 | C | | | | | | | |
| 533 32 08-43 | L | | 734 11 52-01 | BN | | | | | | | |
| 533 32 08-44 | L | | 734 11 78-01 | I | | | | | | | |
| 533 32 08-45 | L | | 738 22 03-19 | I | | | | | | | |
| 533 32 09-22 | G | | 810 04 08-00 | M | | | | | | | |
| 533 32 13-06 | G | | 872 11 05-06 | GMJJ | | | | | | | |
| 533 32 13-82 | D | | 873 22 06-00 | I | | | | | | | |
| 533 32 14-21 | E | | 874 61 06-24 | D | | | | | | | |
| 533 32 15-16 | C | | 874 76 04-12 | K | | | | | | | |
| 533 32 18-10 | A | | 874 78 04-14 | ABE | | | | | | | |
| 533 32 20-60 | B | | 874 78 05-16 | N | | | | | | | |
| 533 32 20-69 | B | | 874 78 05-44 | D | | | | | | | |
| 533 32 21-16 | I | | 874 78 06-16 | D | | | | | | | |
| 533 32 21-57 | M | | 874 78 06-20 | C | | | | | | | |
| 533 32 21-72 | L | | 874 78 06-48 | C | | | | | | | |
| 533 32 21-73 | L | | | | | | | | | | |
| 533 32 21-74 | L | | | | | | | | | | |
| 533 32 21-75 | L | | | | | | | | | | |

N-New part
 Neues teil
 Nouvelle piece
 Nueva pieza
 Ny detalj