

# 5-21



**1.1995**

**Spare parts**

**Ersatzteile**

**Pièces détachées**

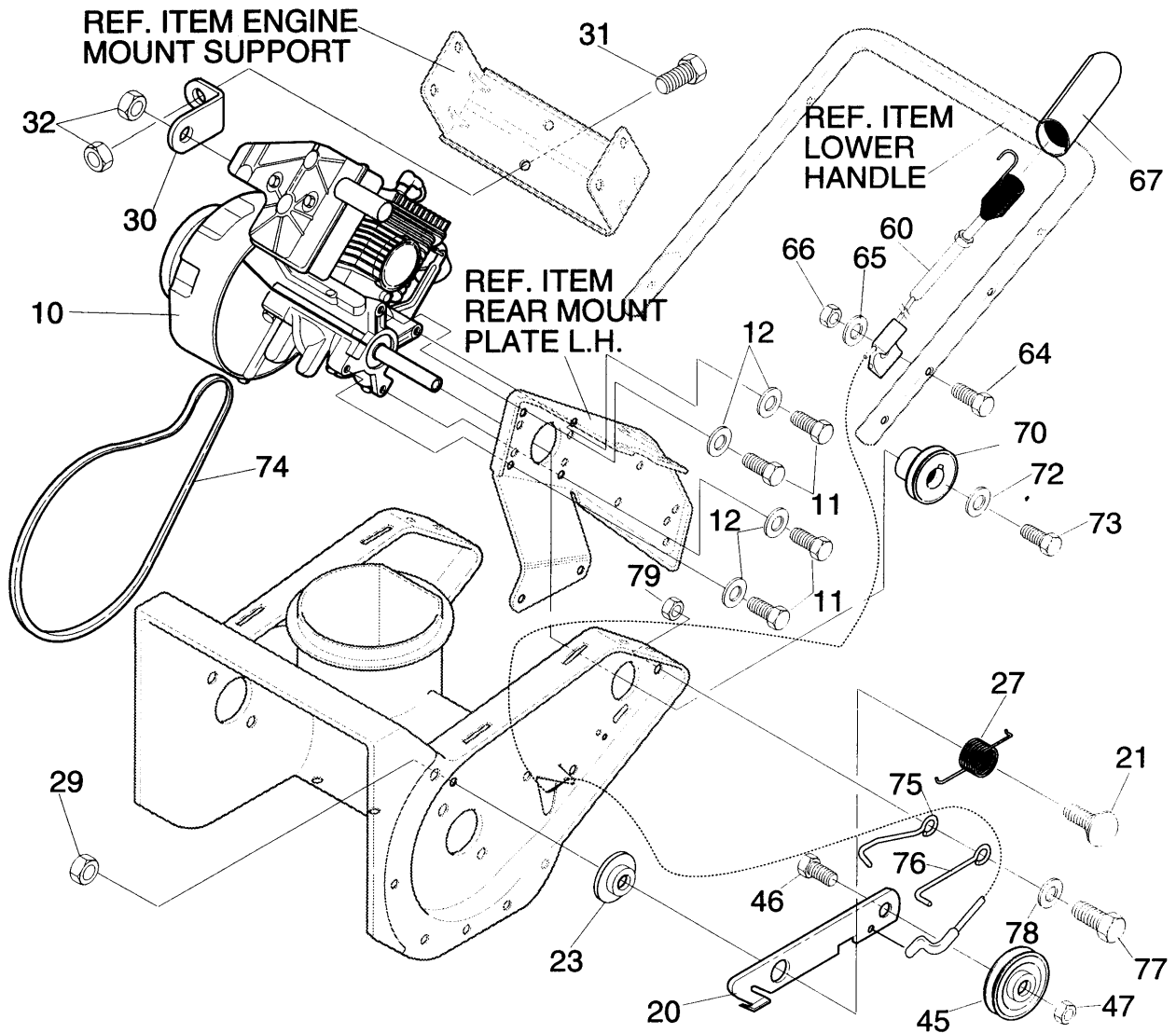
**Reserve onderdelen**

**Repuestos**

**Reservdelar**

# A

## MOTOR AND DRIVE REPAIR PARTS

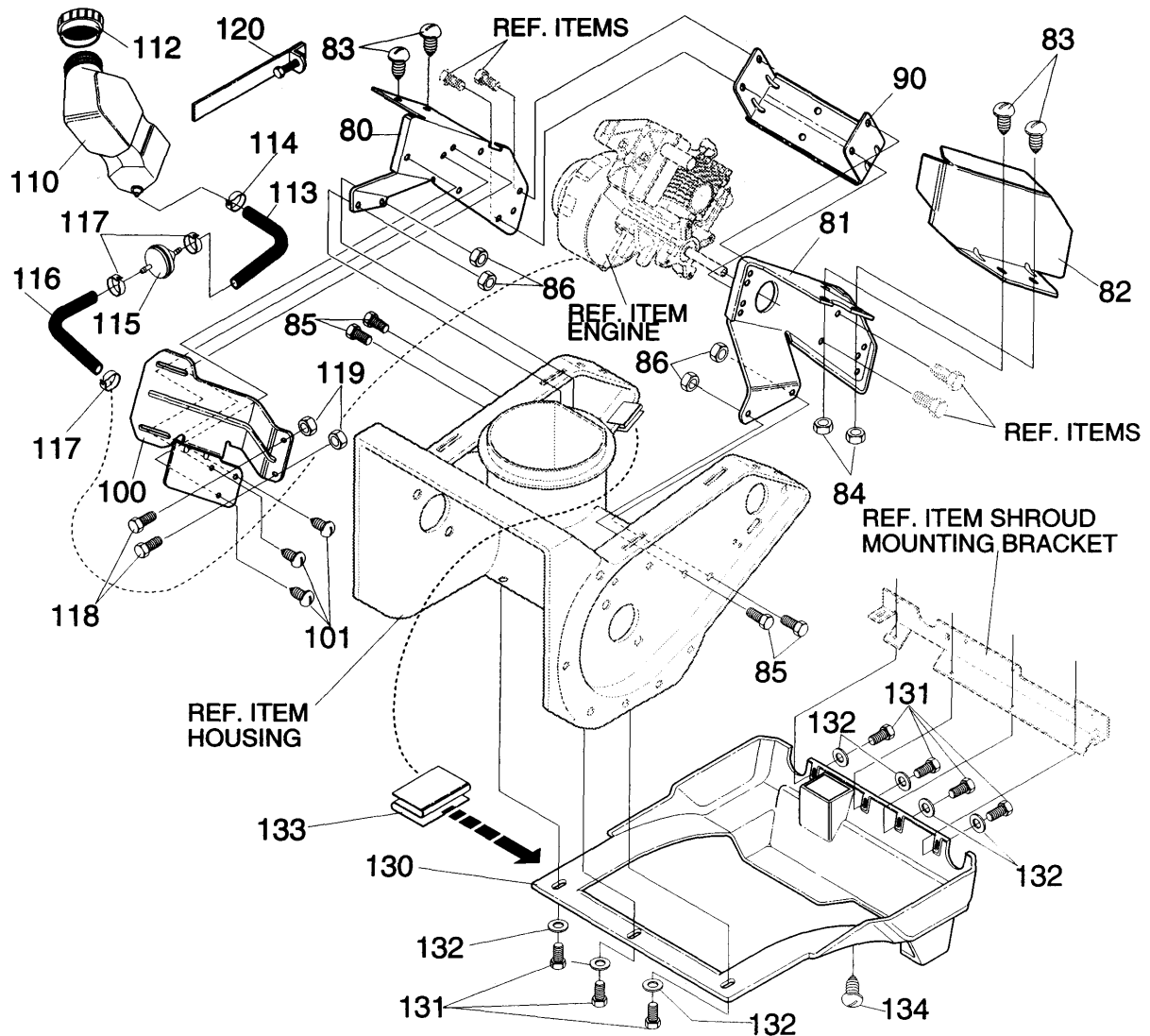


REF. NO.	PART NO.	PART NAME
10		ENGINE, 5HP 2CY (SEE ENGINE MANUAL)
11	874 78 05-10	SCREW, 5/16-18x.75 HHC
12	533 12 06-38	WASHER, .328x.60x.09
20	533 30 14-18	BRACKET, I DLER ARM
21	533 31 84-72	BOLT, IDLER ARM
23	533 31 01-76	SPACER, .38x1.25x.324
27	533 32 01-50	SPRING, TORSION, BRAKE
29	873 22 06-00	NUT, 3/8-16 HXCTRLKJAM
30	533 30 14-15	SUPPORT, ENGINE
31	533 18 00-73	SCREW, 5/16-18x.50 HHC
32	533 00 14-98	NUT, 5/16-18 REGHEXCTRLK
45	533 30 18-56	IDLER PULLEY, 1.88x.5x.38
46	874 78 06-20	BOLT, 3/8-16x1.25 SPCARR
47	873 22 06-00	NUT, 3/8-16 HXCTRLKJAM
60	533 32 05-29	CABLE, DRIVE CONTROL

REF. NO.	PART NO.	PART NAME
64	874 78 04-24	SCREW, 1/4-20x1.50 HHC
65	533 12 03-92	FLATWASHER, .281x.63x.065
66	873 68 04-00	NUT, 1/4-20 REGHEXCTRLK
67	533 31 41-42	COVER, CABLE SPRING
70	533 31 35-95	PULLEY HALF, 3L 2.00
72	734 11 65-41	FLATWASHER, .333x.87x.119
73	533 30 06-37	SCREW, 5/16-24x.88
74	533 32 58-90	BELT, V3Lx35, .048 D
75	533 31 32-44	GUIDE, BELT .38IDx2.66
76	533 31 32-43	GUIDE, BELT .38IDx3.30 OFF
77	874 78 06-16	SCREW, 3/8-16x1.00 HHC
78	734 11 72-01	FLATWASHER, .406x.81 x.065
79	873 68 06-00	NUT, 3/8-16 REGHXCTRLK

# B

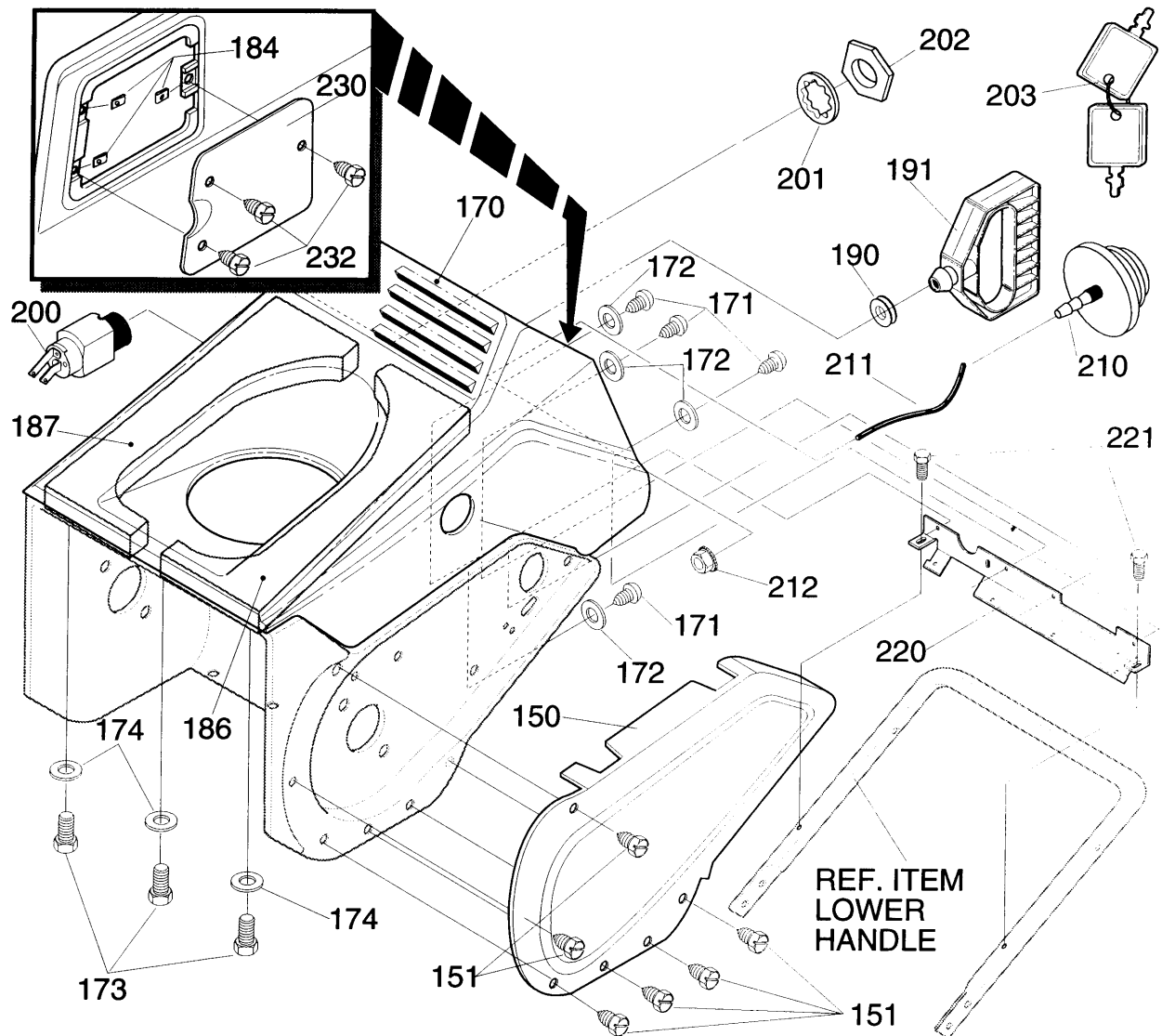
## FRAME COMPONENTS REPAIR PARTS



REF. NO.	PART NO.	PART NAME	REF. NO.	PART NO.	PART NAME
80	533 30 14-20	PLATE, REAR MOUNT, RH	114	533 04 73-45	CLAMP, HOSE SCREW TYPE
81	533 30 14-21	PLATE, REAR MOUNT, LH	115	533 05 66-79	FILTER, IN-LINE
82	533 31 17-38	SHIELD, ENGINE HEAT	116	533 32 33-95	TUBING, GAS LINE 3IN.
83	874 78 04-10	SCREW, 1/4-20x.63	117	533 32 33-87	CLAMP, HOSE
84	873 22 04-00	NUT, 1/4-20 WDFL	118	533 27 47-07	SCREW, 10-24x.50
85	533 18 00-73	SCREW, 5/16-18x.50 HHC	119	873 27 10-00	NUT, #10-24 REGHEXCTRLK
86	873 68 05-00	NUT, 5/16-18 REGHEXCTRLK	120	533 31 16-71	CLAMP, WORM DR
90	533 30 14-19	SUPPORT, FRAME ENG. MNT	130	533 31 41-81	SHROUD, BOTTOM
100	533 30 77-24	BRACKET, GAS TANK 2CY	131	533 30 98-14	SCREW, #10-24x.63
101	533 30 98-14	SCREW, #10-24x.63	132	533 30 30-41	FLATWASHER, .203x.56x.040
110	533 32 61-42	TANK, FUEL, 1.62 QT.	133	533 31 30-57	CLIP, "S" TINNEMAN
112	533 32 70-18	CAP, FUEL, W/2654 SEAL	134	533 05 73-66	SCREW, 10-16x.50
113	533 32 33-63	TUBING, GAS LINE 8 IN.			

# C

## BELT COVER REPAIR PARTS

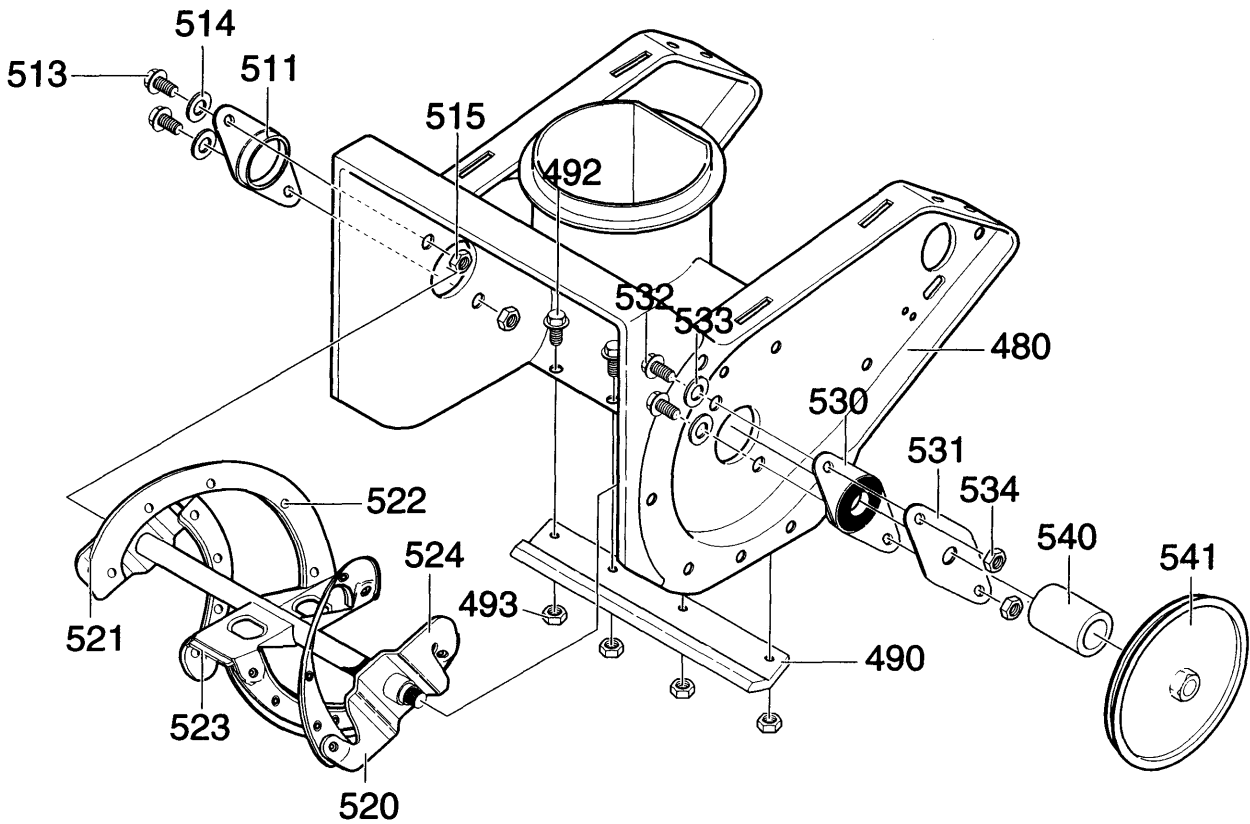


REF. NO.	PART NO.	PART NAME
150	533 30 24-16	COVER, BELT
151	533 03 52-58	SCREW, 10-24x.38
170	533 31 41-79	COVER, TOP
171	533 30 98-14	SCREW, #10-24x.63 TRPHTAP
172	533 30 30-41	FLATWASHER, .203x.56x.040
173	533 30 98-13	SCREW, #10-14x.63
174	734 11 53-01	FLATWASHER, .250x.56x.049
184	533 30 98-11	NUT, TINN "U"
186	533 31 43-92	FOAM, SHROUD LH
187	533 31 43-93	FOAM, SHROUD RH
190	533 05 75-87	GROMMET & WASHER, ROPE GUIDE

REF. NO.	PART NO.	PART NAME
191	501 55 14-02	GRIP, MITTEN, TECUMSEH
200	533 05 69-92	SWITCH, IGNITION
201	533 13 85-57	WASHER, REGINTLK
202	533 04 81-40	NUT, 5/8-32 HXHD IGN SWIT
203	533 04 96-43	2 KEYS & RING, ASSEMBLY
210	533 05 46-01	PRIMER, ENGINE 2CY
211	533 00 12-59	HOSE, PRIM 5.75 LONG
212	533 30 30-08	NUT, 1/4-20 HEXKEPS
220	533 30 74-69	BRACKET, SHROUD MNTG
221	533 30 98-14	SCREW, #10-24x.63 TRPHTAP
230	533 31 41-80	DOOR, RED
232	533 31 23-62	SCREW #10-16x.75

# D

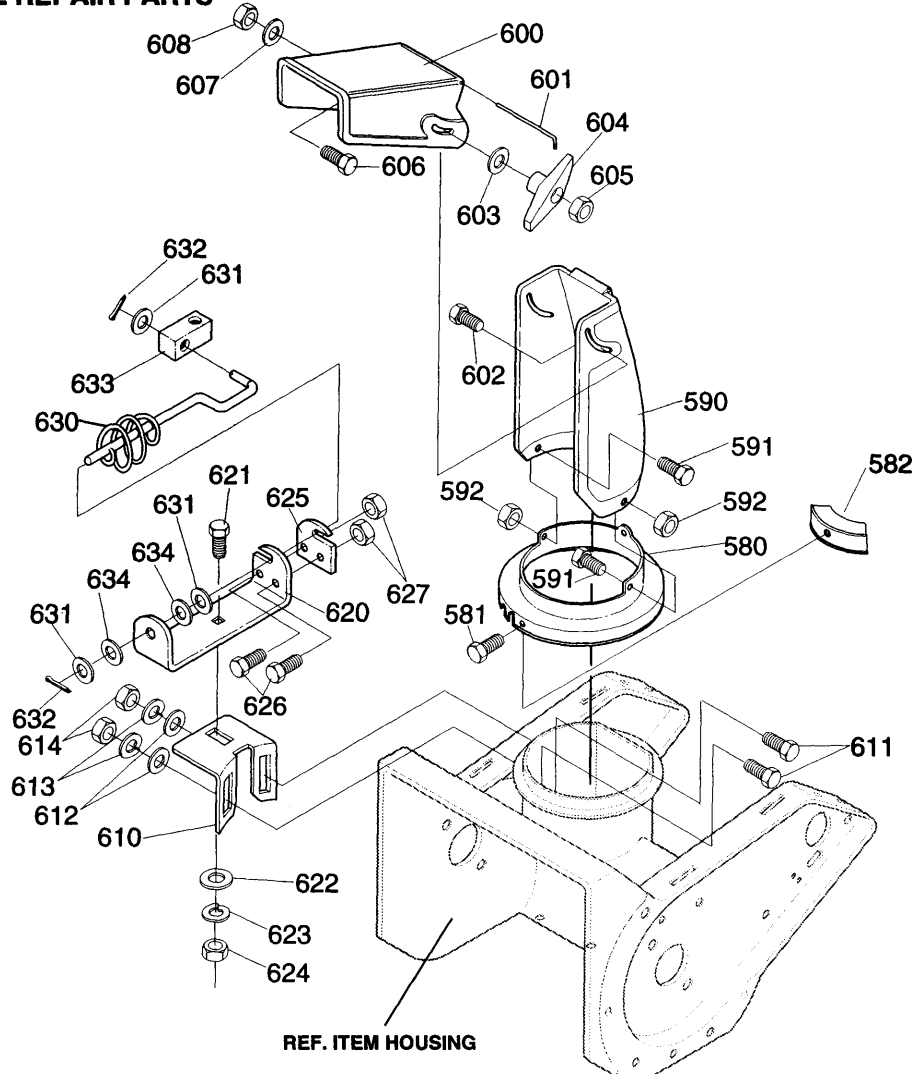
## AUGER HOUSING REPAIR PARTS



REF. NO.	PART NO.	PART NAME
480	533 33 03-17	HOUSING, ASSEMBLY AUG 21"
490	533 30 24-18	BLADE, SCRAP 20.88 PLAST
492	874 31 04-10	SCREW, 1/4-20x.63 SLTRMA
493	533 04 69-31	NUT, 1/4-20 WDFL MAC-LOCK
511	533 05 48-37	BEARING, FL .670IDx1.25 ODx.88
513	874 78 04-14	SCREW, 1/4-20x.88 HHC
514	734 11 53-01	FLATWASHER, .281x.63x.065
515	533 04 69-31	NUT, 1/4-20 WDFL MAC-LOCK
520	533 30 93-76	AUGER, ASSY COMP 2CY 21"
521	533 30 25-65	BLADE, AUGER 2CY
522	533 04 98-38	RIVET, .250DIAx.50 LONG
523	533 05 71-21	BLADE, CENTER
524	533 30 70-49	AUGER & BLADE ASSEMBLY
530	533 05 45-73	BEARING & PLATE, ASSY
531	533 33 42-87	RETAINER, BEARING
532	533 18 00-20	SCREW, 1/4-20x75 HHC
533	734 11 53-01	FLATWASHER, .281 x.63x.065
534	873 68 04-00	NUT, 1/4-20 REGHEXCTRLK
540	533 30 24-28	SPACER, SLEV .640x.88x.732
541	533 30 13-55	PULLEY. V3L 6.00x.75 20GA

# E

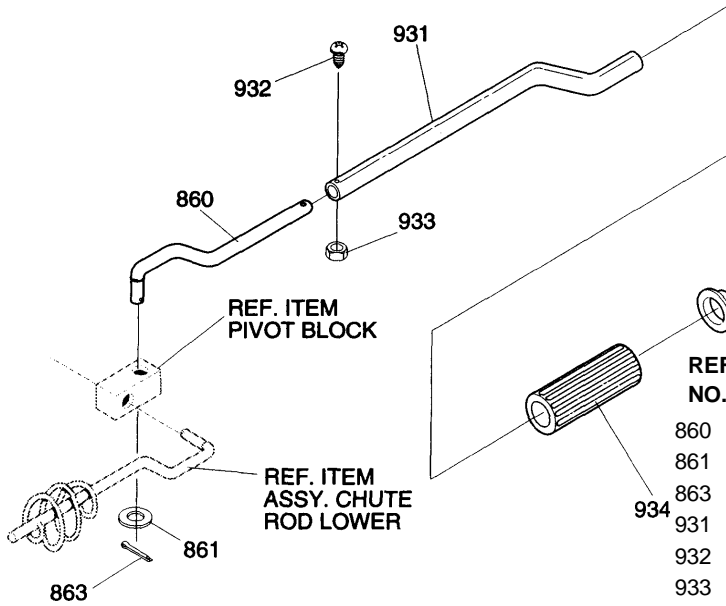
## DISCHARGE CHUTE REPAIR PARTS



REF. NO.	PART NO.	PART NAME	REF. NO.	PART NO.	PART NAME
580	533 30 78-42	RING, LOWER CHUTE	614	873 22 05-00	NUT, 5/16-18 REGHEXCTRLK
581	533 05 69-62	SCREW, 1/4-14x.63 HWATAP	620	533 30 07-28	BKT, CHUTE ROD HOLDER
582	533 30 07-90	CLIP, CHUTE RING PLASTIC	621	872 14 06-06	BOLT, 5/16-18x.75 CARR
590	533 33 78-43	CHUTE, LOWER	622	734 11 63-01	FLATWASHER, .344x.69x.065
591	874 78 04-08	SCREW, 1/4-20x.50 HHC	623	810 04 05-00	WASHER, HVSPTLK
592	533 04 69-31	NUT, 1/4-20 WDFL MAC-LOCK	624	873 22 05-00	NUT, 5/16-18 REGHEXCTRLK
600	533 31 47-04	CHUTE, UPPER W/OHDLE	625	533 30 77-41	PLATE, CHUTE ROD
601	533 31 05-62	WIRE, HINGE 5.75 LONG	626	874 78 04-08	SCREW, 1/4-20x.50 HHC
602	872 11 05-10	BOLT, 5/16-18x1.25 CARR	627	873 68 04-00	NUT, 1/4-20 REGHEXCTRLK
603	734 11 63-01	FLATWASHER, .344x.69x.065	630	533 30 77-42	ROD, ASSY CHUTE LOWER
604	533 01 35-27	KNOB, T 2BLADE W/5/16/18 NUT	631	533 01 24-52	FLATWASHER, .40x.75x.025
605	873 22 05-00	NUT, 5/16-18 REGHEX	632	533 12 12-22	PIN, COTTER.090DIAx.75 LONG
606	874 78 05-12	SCREW, 5/16-18x.75 SLTRMA	633	533 05 15-64	BLOCK, PIVOT PLASTIC
607	734 11 63-01	FLATWASHER, .344x.69x.065	634	533 31 34-31	WASHER, CURVED SPRING
608	873 68 05-00	NUT, 5/16-18 REGHEXCTRLK			
610	533 30 25-05	BRACKET, WORM ADJUST			
611	872 14 06-06	BOLT, 5/16-18x.75 CARR			
612	734 11 63-01	FLATWASHER, .344x.69x.065			
613	810 04 05-00	WASHER, HVSPTLK			

# F

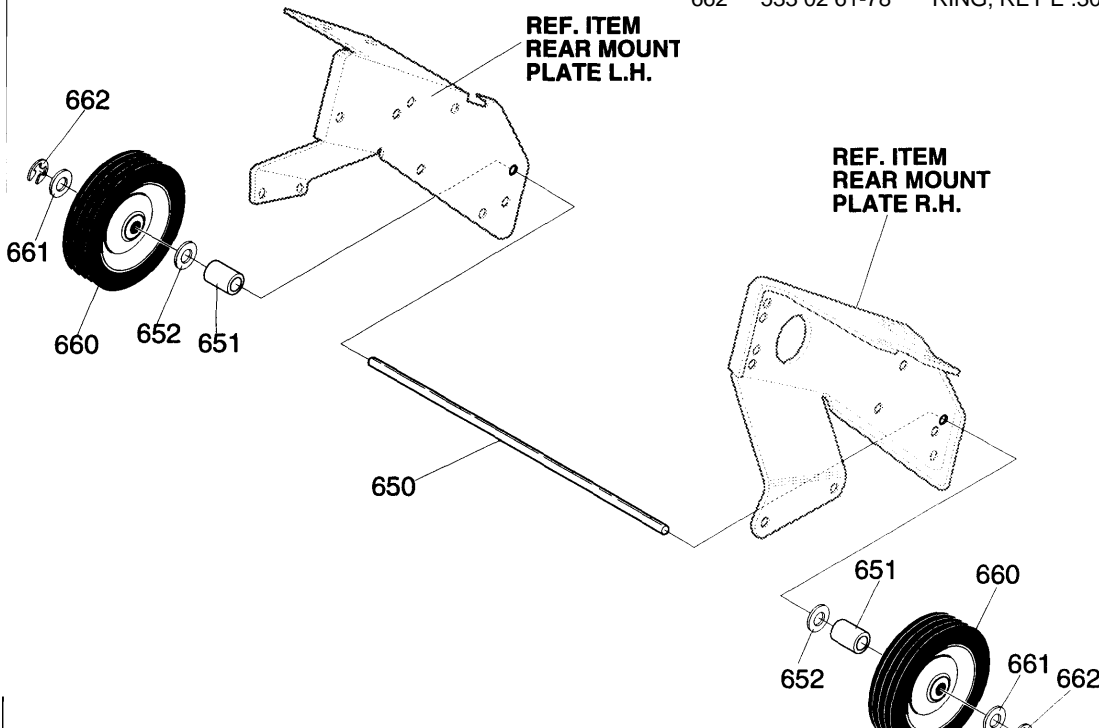
## CHUTE CONTROL ROD REPAIR PARTS



REF. NO.	PART NO.	PART NAME
860	533 30 77-56	ROD, MID CHUTE CTL
861	533 01 24-52	FLATWASHER, .40x.75x.025
863	533 12 12-22	PIN, COTTER .090 DIAx.75LG
931	533 30 94-49	ROD CHUTE CTRL UPR, ASSY
932	533 31 41-58	SCREW, 10-32x.88 SLTRHD
933	533 31 41-59	NUT, #10-32 CTRLK
934	533 30 77-55	KNOB, CHUTE CRANK
935	533 33 15-32	NUT, PUSH, FITS 3/8 DIA

313981 B

# G

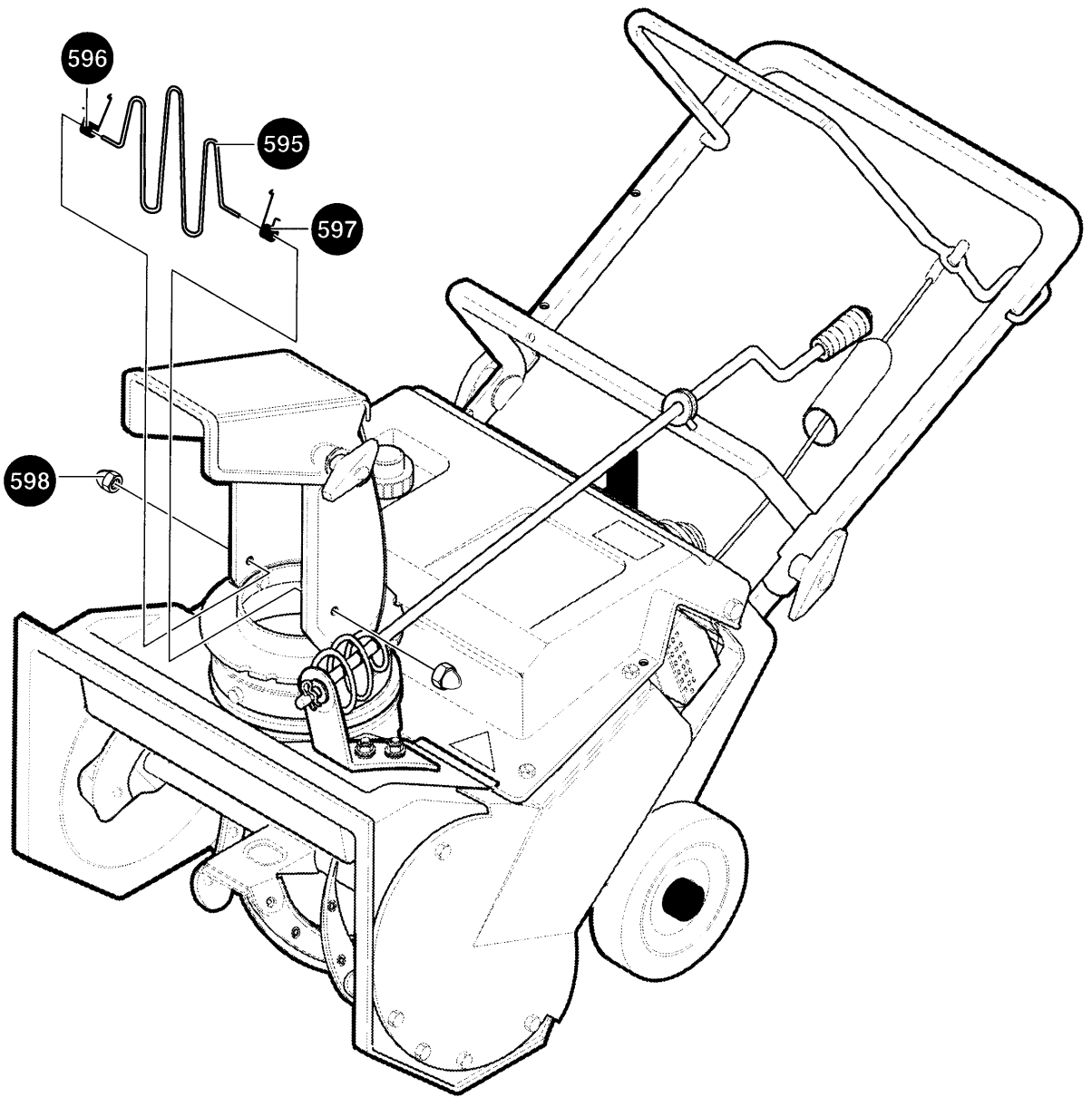


REF. NO.	PART NO.	PART NAME
650	533 30 77-19	SHAFT, AXLE 5/21 SC
651	533 30 96-56	SPACER, SLEV .407x.63x.44
652	533 12 03-94	FLATWASHER, .406X.81 X.065
660	533 32 50-16	TIRE & RIM 8X1.75
661	533 12 03-94	FLATWASHER .406X.81 X.065
662	533 02 61-78	RING, RET E .30x.04

334817 A

# H

## GUARD REPAIR PARTS



### REF.

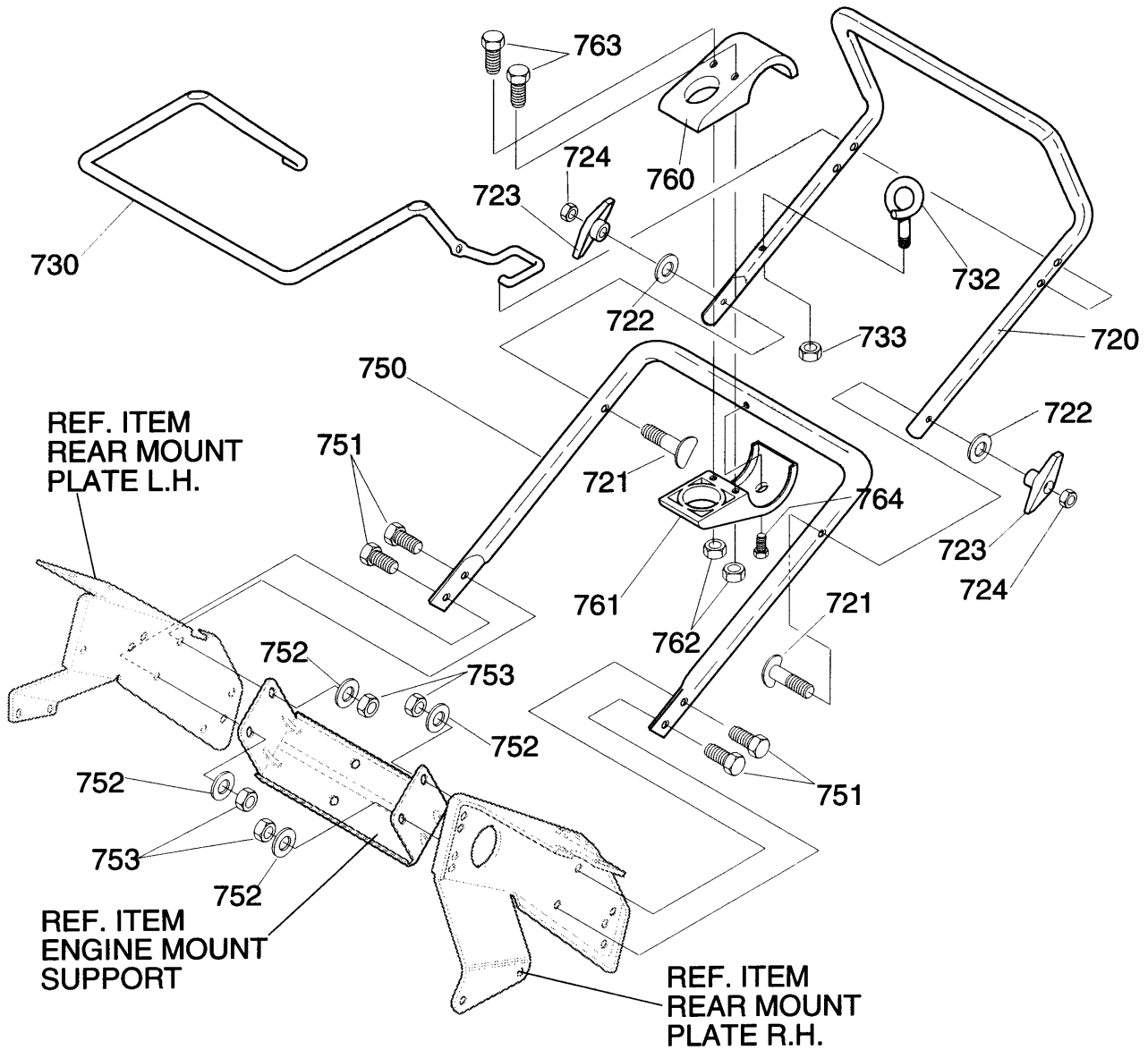
NO.	PART NO.	PART NAME
595	533 31 12-06	GUARD, WIRE CHUTE LOWER
596	533 05 17-76	SPRING, TORSION CHUTE GUARD
597	533 05 17-77	SPRING, TORSION CHUTE GUARD
598	533 04 91-06	NUT, ACORN PALNUT-#

314878 A



# J

## HANDLE REPAIR PARTS



REF.  
NO. PART NO.

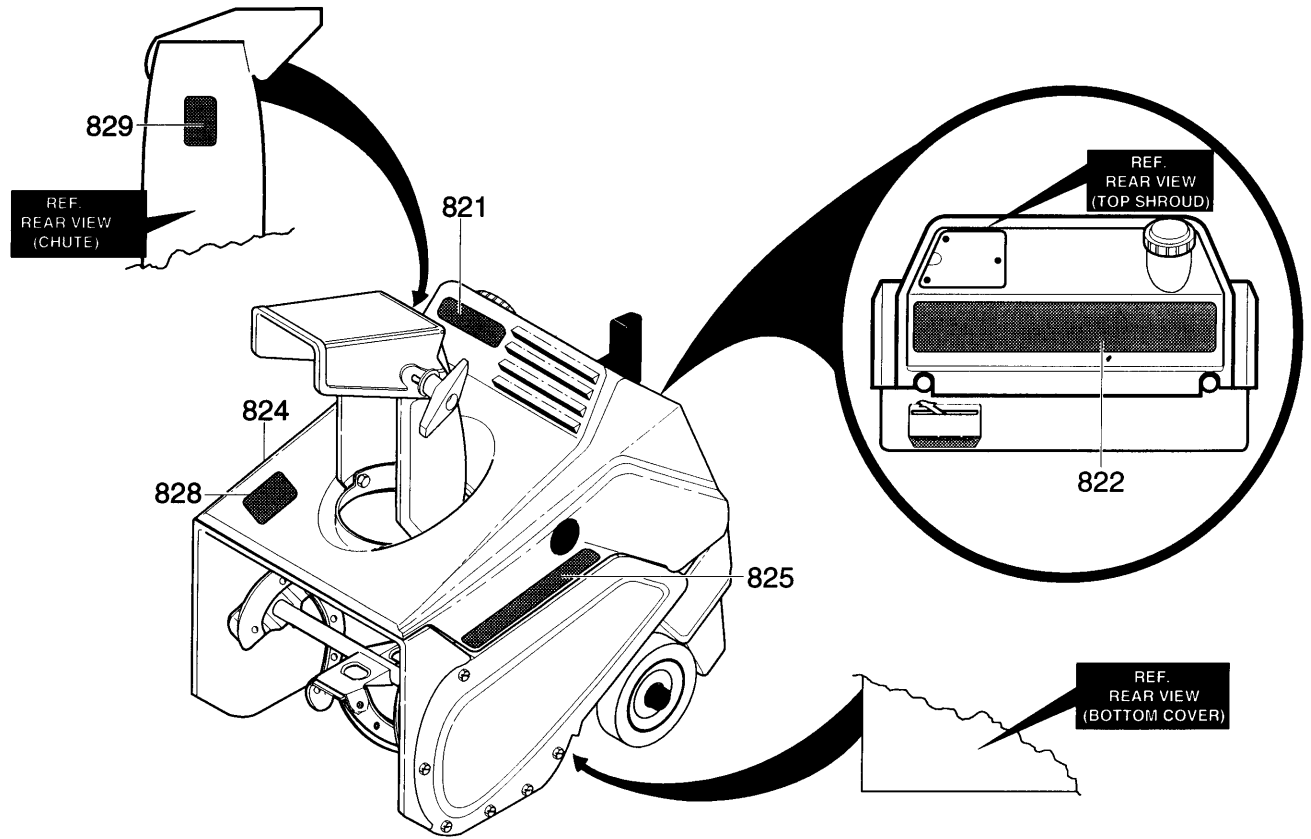
720	533 31 43-78	HANDLE & FOAM ASSY.
721	533 33 75-84	BOLT, 5/16-18x2.00
722	533 02 20-25	WASHER, FORM .344 ID1.0
723	533 01 35-27	KNOB, T 2BLADE W/NUT
724	873 22 05-00	NUT, 5/16-18 REGHEX
730	533 30 24-17	BAR, CONTROL DRIVE .31 DIA
732	533 30 94-45	ROPE GUIDE
733	873 68 05-00	NUT, 5/16-18 REGHEXCTRLK
750	533 30 16-07	HANDLE, LOWER

REF.  
NO. PART NO. PART NAME

751	874 78 05-12	SCREW, 5/16-18x.75 HHC
752	734 11 63-01	FLATWASHER, .344x.69x.065
753	873 68 05-06	NUT, 5/16-18 REGHEXCTRLK
760	533 30 87-15	BRACKET HALF, CHT CRANK
761	533 30 87-16	BRACKET HALF, CHT CRANK
762	533 07 10-55	NUT, #10-24 HEXNYLK
763	533 30 98-15	SCREW, #10-24x1.00
764	533 31 01-69	SCREW, 1/4-20x.63

# K

## DECALS



REF. NO.	PART NO.	PART NAME
821	533 40 25-86	DECAL, HUSQVARNA
822	533 31 48-09	DECAL, CONTROL PANEL
824	533 40 27-96	DECAL, RH SHROUD SIDE ST21/5
825	533 40 27-95	DECAL, LH SHROUD SIDE ST 21/5
828	533 00 41-26	DECAL, WARNING
829	533 31 48-19	DECAL, WARNING INSTR MULTILING

## MODEL NUMBER S521

PART NUMBER	SQUARE	NOTE	PART NUMBER	SQUARE	NOTE	PART NUMBER	SQUARE	NOTE	PART NUMBER	SQUARE	NOTE
501 55 14-02	C		533 30 98-11	C							
533 00 12-59	C		533 30 98-13	C							
533 00 14-98	A		533 30 98-14	C							
533 00 41-26	K		533 30 98-15	J							
533 01 24-52	E		533 31 01-69	J							
533 01 35-27	EJ		533 31 01-76	A							
533 02 20-25	J		533 31 05-62	E							
533 02 61-78	G		533 31 12-06	H							
533 03 52-58	C		533 31 16-71	B							
533 04 69-31	DE		533 31 17-38	B							
533 04 73-45	B		533 31 23-62	C							
533 04 81-40	C		533 31 30-57	B							
533 04 91-06	H		533 31 32-43	A							
533 04 96-43	C		533 31 32-44	A							
533 04 98-38	D		533 31 34-31	E							
533 05 15-64	E		533 31 35-95	A							
533 05 17-76	H		533 31 41-42	A							
533 05 17-77	H		533 31 41-58	F							
533 05 45-73	D		533 31 41-59	F							
533 05 46-01	C		533 31 41-79	C							
533 05 48-37	D		533 31 41-80	C							
533 05 66-79	B		533 31 41-81	B							
533 05 69-62	E		533 31 43-73	J							
533 05 69-92	C		533 31 43-78	J							
533 05 71-21	D		533 31 43-92	C							
533 05 73-66	B		533 31 43-93	C							
533 05 75-87	C		533 31 47-04	E							
533 07 10-55	J		533 31 48-09	K							
533 12 03-92	A		533 31 48-19	K							
533 12 03-94	G		533 31 84-72	A							
533 12 06-38	A		533 32 01-50	A							
533 12 12-22	E		533 32 05-29	A							
533 13 85-57	C		533 32 33-63	B							
533 18 00-20	D		533 32 33-87	B							
533 18 00-73	AB		533 32 33-95	B							
533 27 47-07	B		533 32 50-16	G							
533 30 06-37	A		533 32 58-90	A							
533 30 07-28	E		533 32 61-42	B							
533 30 07-90	E		533 32 70-18	B							
533 30 14-15	A		533 33 03-17	D							
533 30 14-18	A		533 33 15-32	F							
533 30 14-19	B		533 33 42-87	D							
533 30 14-20	B		533 33 75-84	J							
533 30 14-21	B		533 33 78-43	E							
533 30 16-07	J		533 40 25-86	K							
533 30 18-55	D		533 40 27-95	K							
533 30 18-56	A		533 40 27-96	K							
533 30 24-16	C		734 11 53-01	CD							
533 30 24-17	J		734 11 63-01	EJ							
533 30 24-18	D		734 11 65-41	A							
533 30 24-28	D		734 11 72-01	A							
533 30 25-00	E		810 04 05-00	E							
533 30 25-05	E		872 11 05-10	E							
533 30 25-65	D		872 14 06-06	E							
533 30 30-08	C		873 22 04-00	B							
533 30 30-41	BC		873 22 05-00	EJ							
533 30 70-49	D		873 22 06-00	A							
533 30 74-69	C		873 27 10-00	B							
533 30 77-19	G		873 68 04-00	CDE							
533 30 77-24	B		873 68 05-00	BEJ							
533 30 77-41	E		873 68 05-06	J							
533 30 77-42	E		873 68 06-00	A							
533 30 77-55	F		874 31 04-10	D							
533 30 77-56	F		874 78 04-08	E							
533 30 78-42	E		874 78 04-10	B							
533 30 87-15	J		874 78 04-14	D							
533 30 87-16	J		874 78 04-24	A							
533 30 93-76	D		874 78 05-10	A							
533 30 94-45	J		874 78 05-12	EJ							
533 30 94-49	F		874 78 06-16	A							
533 30 96-56	G		874 78 06-20	A							