

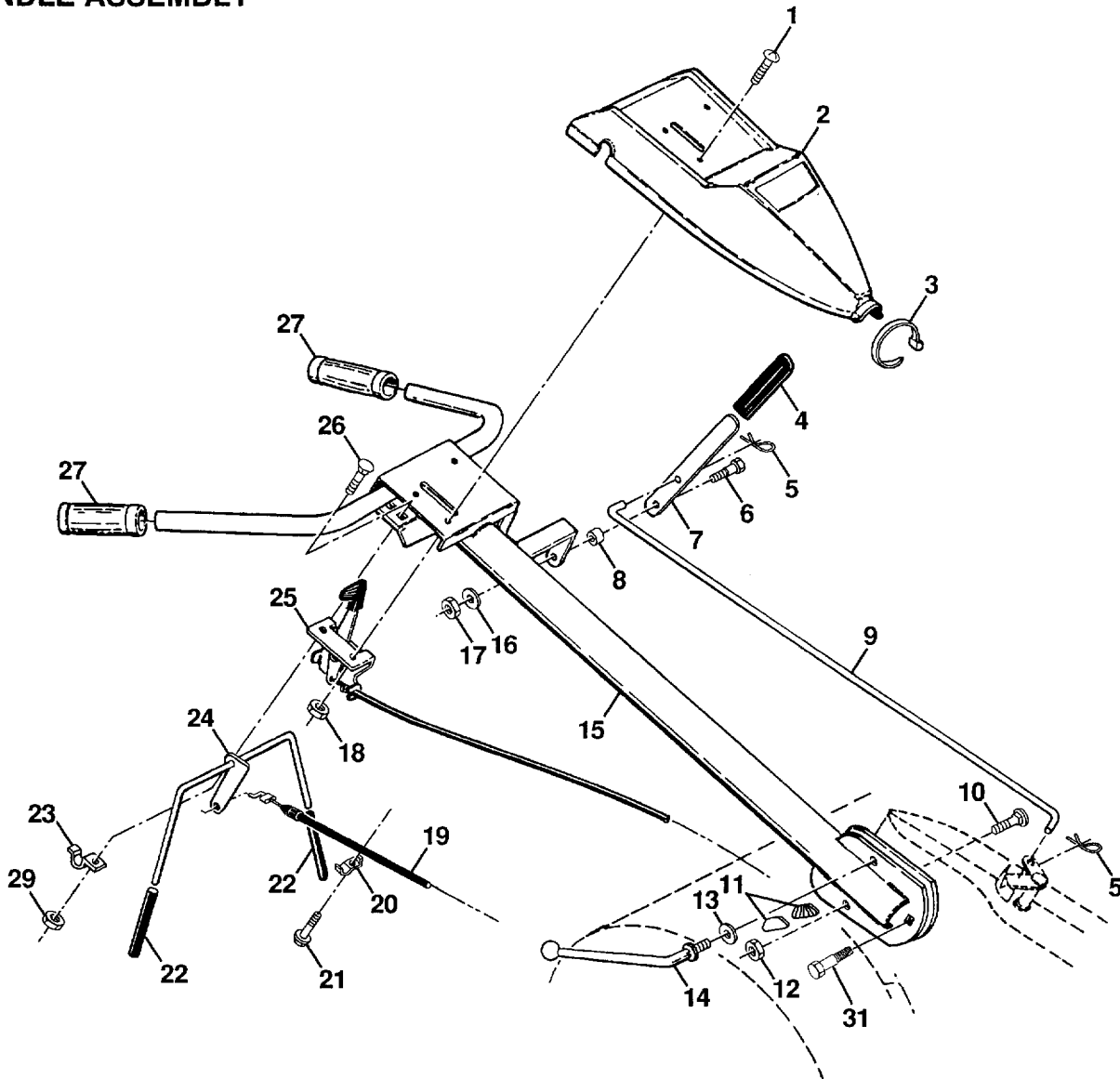
ILLUSTRATED PARTS BREAKDOWN

**HUSQVARNA
5 HP 17" REAR TINE TILLER
MODEL NO. CRT51 (HECRT51B)**

REPAIR PARTS

TILLER - - MODEL NUMBER CRT51 (HECRT51B)

HANDLE ASSEMBLY



KEY NO.	PART NO.	DESCRIPTION
---------	----------	-------------

1	871 19 10-08	Screw, Truss Hd. #10-24 UNC x 1/2
2	532 12 69-56	Panel, Control
3	532 10 41-64	Tie, Cable
4	532 12 47-97	Grip, Handle
5	532 12 47-88	Clip, Hairpin
6	532 08 13-28	Bolt, Shoulder
7	532 10 93-35	Handle, Shift
8	532 10 93-13	Grommet, Rubber
9	532 10 93-37	Rod, Shift
10	872 11 06-08	Bolt, Carriage 3/8-16x1 Gr.5
11	532 10 92-29	Lock, Handle
12	873 93 06-00	Nut, Centerlock 3/8-16
13	819 13 16-11	Washer 13/32 x 1 x 11 Ga.
14	532 10 92-28	Lever, Lock, Handle
15	532 15 15-96	Handle
16	810 04 04-00	Washer, Lock 1/4

KEY NO.	PART NO.	DESCRIPTION
---------	----------	-------------

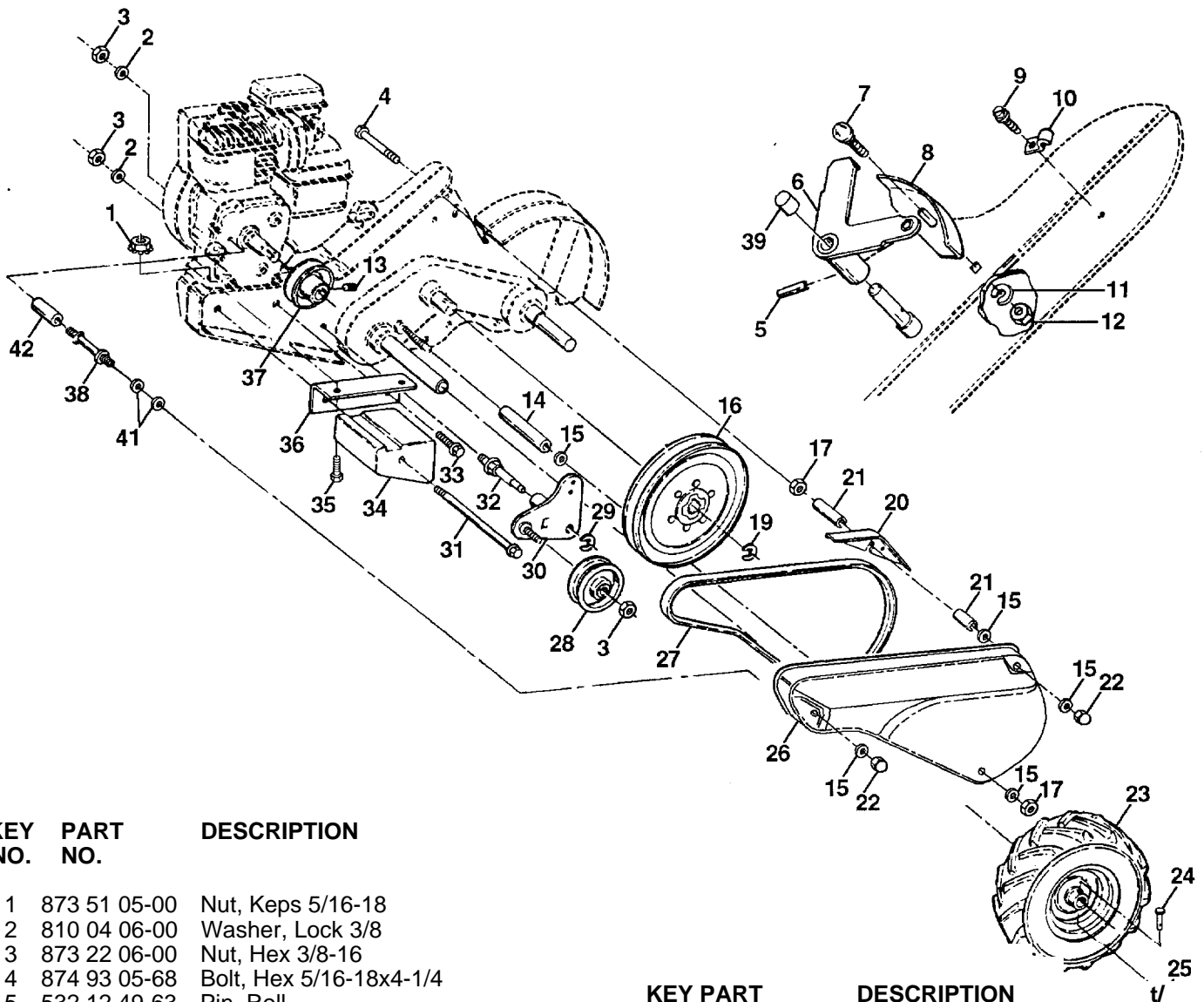
17	873 22 04-00	Nut, Hex 1/4-20
18	873 73 10-00	Nut, Keps #10-24 UNC
19	532 14 76-68	Cable, Clutch
20	532 00 94-84	Clip
21	532 08 67-77	Screw, Hex Washer Hd. Slotted #10-24 x 1/2
22	532 10 26-04	Grip, Bar, Control
23	532 10 27-44	Clamp, Bar, Control
24	532 10 52-16	Bar Assembly, Control
25	532 12 70-12	Control, Throttle
26	872 14 04-04	Bolt, Carriage 1/4-20 UNC x 1/2
27	532 00 92-66	Grip, Handle
29	873 51 04-00	Nut, Keps Hex 1/4-20
31	532 15 06-96	Bolt, Pivot

NOTE: All component dimensions given in U.S. inches.
1 inch = 25.4 mm

REPAIR PARTS

TILLER - - MODEL NUMBER CRT51 (HECRT51B)

MAINFRAME, LEFT SIDE



KEY NO.	PART NO.	DESCRIPTION
1	873 51 05-00	Nut, Keps 5/16-18
2	810 04 06-00	Washer, Lock 3/8
3	873 22 06-00	Nut, Hex 3/8-16
4	874 93 05-68	Bolt, Hex 5/16-18x4-1/4
5	532 12 49-63	Pin, Roll
6	532 11 01-11	Lever, Shift
7	872 11 04-04	Bolt, Carriage 1/4-20 x 1/2 Gr. 5
8	532 00 87-00	Plate, Shift indicator
9	532 08 67-77	Screw, Hex, Washer Head, Slotted #10-24 x 1/2
10	532 00 94-84	Clip
11	810 04 04-00	Washer, Lock 1/4
12	873 22 04-00	Nut, Hex 1/4-20
13	823 23 05-06	Screw, Set, Hex 5/16-18 x 3/8
14	532 12 09-38	Spacer, Split 0.327 x 0.42 x 2.68
15	819 11 11-16	Washer 11/32 x 11/16 x 16 Ga.
16	532 14 51-02	Sheave, Transmission
17	873 22 05-00	Nut, Hex 5/16-18
19	812 00 00-28	Ring, Retainer
20	532 11 06-53	Guard, Pinch Point
21	532 14 52-16	Spacer, Split 0.327 x 0.42 x 1.688
22	532 10 42-14	Nut, Cap 5/16-18
23	532 00 50-15	Tire
	532 12 43-66	Rim
	532 12 47-18	Tire Valve
24	532 12 68-75	Rivet, Drilled
25	532 12 47-88	Clip, Hairpin

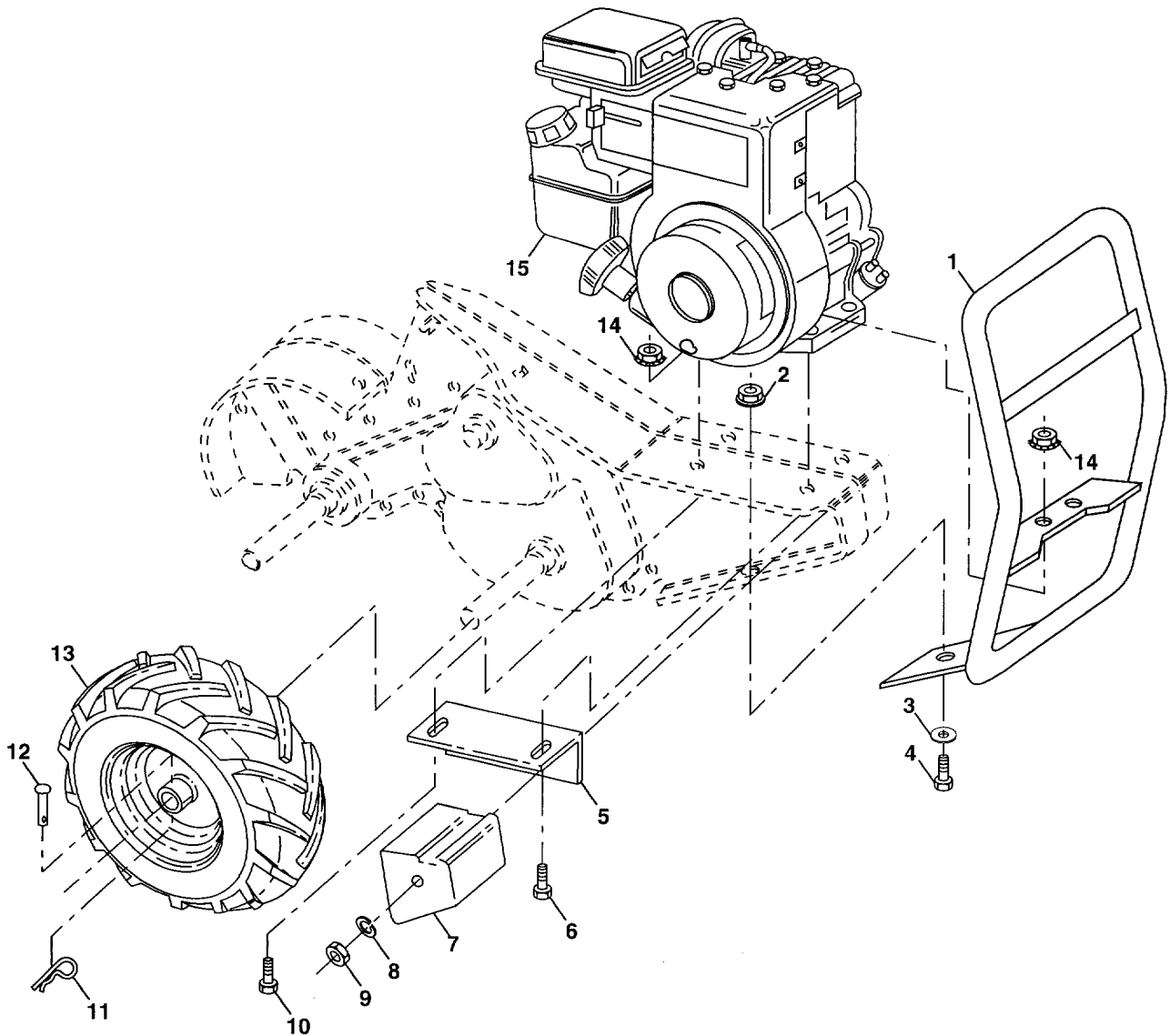
KEY NO.	PART NO.	DESCRIPTION
26	532 12 53-39	Guard, Belt
27	532 13 28-01	Belt, V
28	532 10 46-79	Pulley, Idler
29	812 00 00-32	Ring, Klip
30	532 10 56-11	Bracket, Idler
31	532 10 23-84	Bolt, Hex 5/16-16 x 12
32	532 10 21-41	Shaft, Idler Arm
33	874 76 06-16	Bolt, Hex 3/8-16 x 1
34	532 10 23-83	Counterweight, L. H.
35	874 76 05-32	Bolt, Hex 5/16-18 x 2
36	532 10 23-31	Bracket, Reinforcement, L. H.
37	532 13 08-12	Sheave, Engine
38	532 14 58-22	Stud, Guard Belt
39	532 14 00-62	Cap Plunger
41	819 11 16-10	Washer 11/32 x 1 x 10 Ga.
42	532 15 10-04	Spacer

NOTE: All component dimensions given in U.S. inches.
1 inch = 25.4 mm

REPAIR PARTS

TILLER - - MODEL NUMBER CRT51 (HECRT51B)

MAINFRAME, RIGHT SIDE



KEY NO.	PART NO.	DESCRIPTION
---------	----------	-------------

1	532 14 69-34	Bumper
2	873 97 05-00	Nut, Lock Hex Flange
3	819 11 11-16	Washer 11/32 x 11/16 x 16 Ga.
4	874 76 05-12	Bolt Hex Hd 5/16-18 x 3/4
5	532 10 23-32	Bracket, Reinforcement
6	874 76 05-32	Bolt, Hex 5/16-18 x 2
7	532 10 21-73	Counter Weight, R.H.
8	810 04 06-00	Washer, Lock 3/8
9	873 22 06-00	Nut, Hex 3/8-16
10	874 76 05-24	Bolt, Hex 5/16-18 x 1-1/2

KEY NO.	PART NO.	DESCRIPTION
---------	----------	-------------

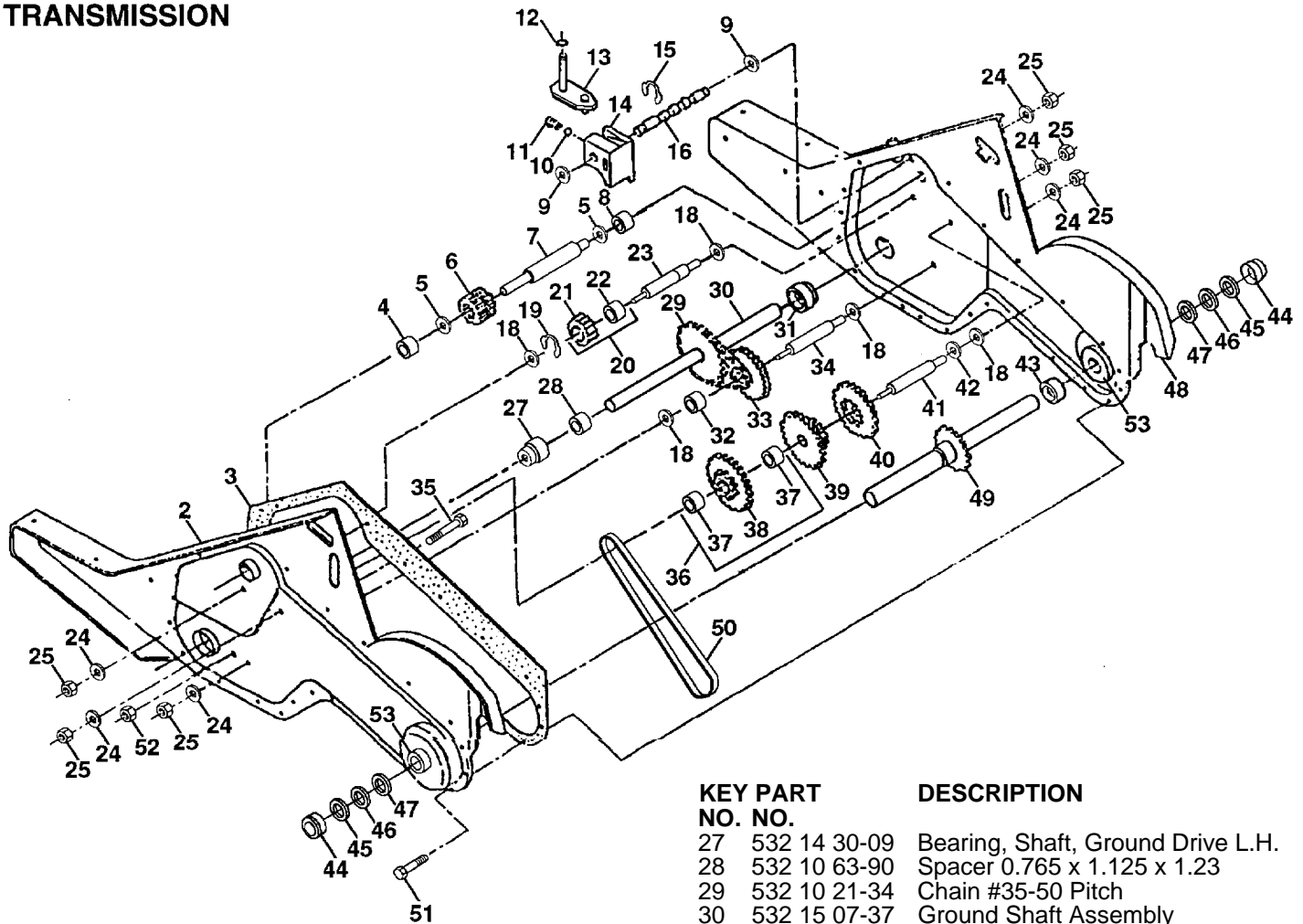
11	532 12 47-88	Clip, Hairpin
12	532 12 68-75	Rivet, Drilled
13	532 00 50-15	Tire
	532 12 43-66	Rim
	532 12 47-18	Tire Valve
14	873 51 05-00	Nut, Keps 5/16-18
15	-----	Engine, Briggs & Stratton Model No. 135202

NOTE. All component dimensions given in U.S.inches.
1 inch = 25.4 mm

REPAIR PARTS

TILLER -- MODEL NUMBER CRT51 (HECRT51B)

TRANSMISSION



KEY PART NO.	PART NO.	DESCRIPTION
1	532 15 43-54	Transmission Assembly (Includes Key Nos. 2-53)
2	532 15 06-98	Gearcase, L.H. w/Bearing (Includes Key No. 4)
3	532 10 62-11	Gasket, Gearcase
4	532 00 50-20	Bearing, Needle
5	532 00 13-70	Washer, Thrust 5/8 x 1.10 x 1/32
6	532 13 73-35	Pinion, Input
7	532 14 51-01	Shaft, Input
8	532 12 47-92	Bearing, Needle
9	532 15 44-67	Washer, Seal
10	532 12 46-97	Ball, Steel
11	532 10 03-71	Spring, Shift, Fork
12	532 10 61-60	O-Ring
13	532 14 21-45	Bracket, Asm. Shift CRT
14	532 00 83-53	Fork, Shift
15	812 00 00-39	Ring, Klip
16	532 15 44-66	Shaft, Shift
18	532 00 43-58	Washer
19	812 00 00-40	Ring, Klip
20	532 10 21-14	Gear, Assembly, Reverse Idler (Includes Key Nos. 21 and 22)
21	532 10 21-15	Gear, Reverse Idler
22	532 00 68-03	Bearing, Needle
23	532 10 21-11	Shaft, Reverse Idler
24	810 04 07-00	Washer, Lock 7/16
25	873 61 07-00	Nut, Hex 7/16-20

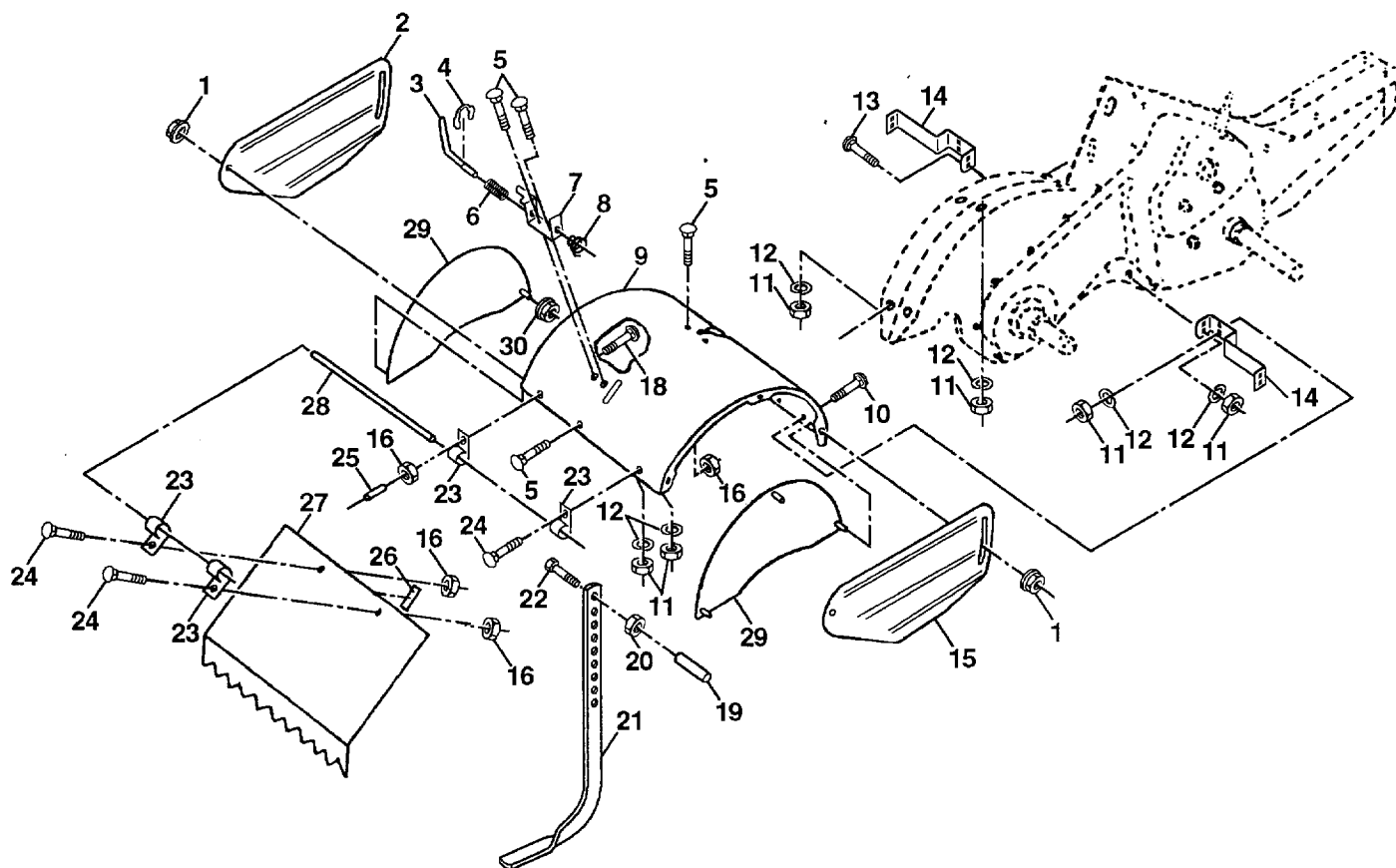
KEY PART NO.	PART NO.	DESCRIPTION
27	532 14 30-09	Bearing, Shaft, Ground Drive L.H.
28	532 10 63-90	Spacer 0.765 x 1.125 x 1.23
29	532 10 21-34	Chain #35-50 Pitch
30	532 15 07-37	Ground Shaft Assembly
31	532 14 30-08	Bearing, Shaft, Ground Drive R. H.
32	532 10 63-88	Spacer 0.70 x 1.00 x 1.150
33	532 10 21-21	Sprocket and Gear Assembly
34	532 10 21-12	Shaft, Reduction (2nd)
35	532 10 21-01	Screw, Whiz, Lock 5/16-18 x 3-1/2
36	532 15 43-55	Sprocket Assembly w/Bearing (Includes Key Nos. 37 and 38)
37	532 12 47-91	Bearing, Needle
38	532 15 43-56	Sprocket, Tine
39	532 10 53-45	Gear, Cluster, Red 1st & 2nd
40	532 10 53-46	Gear, Reverse
41	532 00 83-58	Shaft, Reduction (1 st)
42	532 00 42-20	Washer, Thrust
43	532 10 61-46	Spacer 1.01 x 1.75 x 0.760
44	532 00 96-72	Cup, Formed
45	532 10 21-44	Ring, Spiral
46	532 14 05-76	Seal, Ring, Rubber
47	532 12 46-98	Seal, Oil
48	532 15 07-00	Gearcase, R.H. w/Bearing (Includes Key No. 8)
49	532 13 26-88	Shaft, Tine
50	532 10 61-47	Chain, Roller #50-50 Pitch
51	817 72 04-08	Screw, Thd Cut 1/4-20 x 1/2
52	873 22 05-00	Nut, Hex 5/16-18
53	532 12 22-04	Kit Bearing
--	532 00 60-66	Grease, Plastilube #1

NOTE: All component dimensions given in U.S. inches.
1 inch = 25.4 mm

REPAIR PARTS

TILLER - - MODEL NUMBER CRT51 (HECRT51B)

TINE SHIELD



KEY NO.	PART NO.	DESCRIPTION
---------	----------	-------------

1	898 00 01-29	Nut, Flange 5/16-18
2	532 12 50-12	Shield, Side, Outer L. H.
3	532 00 83-93	Pin, Stake, Depth
4	812 00 00-36	Ring, Klip
5	872 14 05-06	Bolt, Carriage 5/16-18 x 3/4 Gr 5
6	532 00 83-94	Spring
7	532 00 83-92	Bracket, Latch
8	532 10 92-30	Spring, Depth Stake
9	532 14 22-92	Shield, Tine
10	872 14 05-08	Bolt, Carriage 5/16-18 x 1
11	873 22 05-00	Nut, Hex 5/16-18
12	810 04 05-00	Washer, Lock 5/16
13	872 11 05-10	Bolt, Carriage 5/16-18 x 1-1/4
14	532 12 43-11	Bracket, Shield Tine
15	532 12 50-15	Shield, Side, Outer R.H.

KEY NO.	PART NO.	DESCRIPTION
---------	----------	-------------

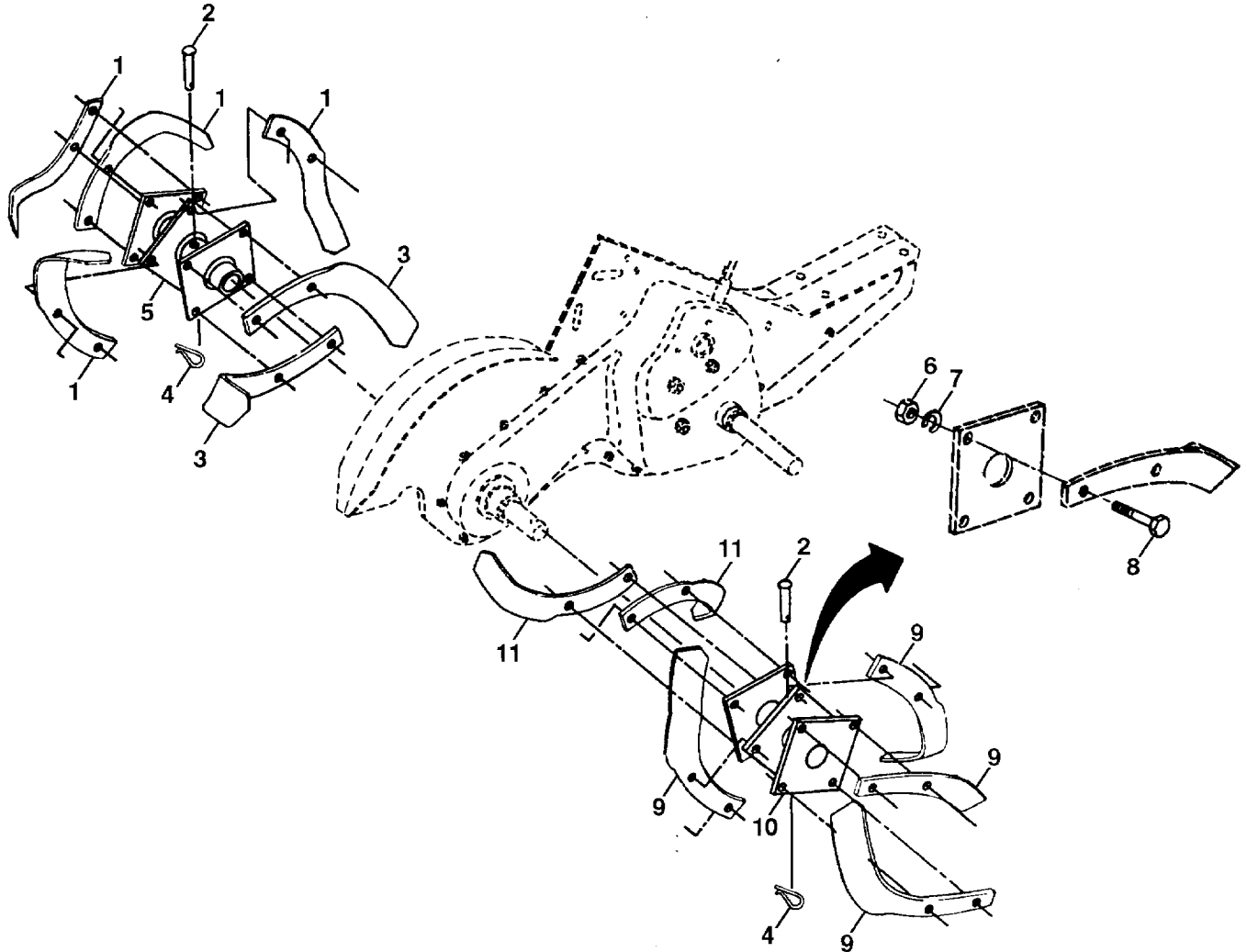
16	873 51 04-00	Nut, Keps Hex 1/4-20
18	872 04 04-10	Bolt, Carriage 1/4-20 x 1-1/4 Gr. 5
19	532 10 27-01	Grip
20	873 22 06-00	Nut, Hex 3/8-16
21	532 10 21-56	Stake, Depth
22	874 93 06-32	Bolt, Hex 3/8-16 x 2
23	532 00 44-40	Hinge
24	872 14 04-04	Bolt, Carriage 1/4-20 x 1/2 Gr. 5
25	532 12 47-17	Cap, Vinyl
26	532 10 92-27	Pad, Idler
27	532 12 50-16	Shield, Leveling
28	532 12 05-88	Pin, Hinge
29	532 14 22-93	Shield, Side
30	873 97 05-00	Nut, Lock Hx Flange

NOTE: All component dimensions given in U.S. inches.
1 inch = 25.4 mm

REPAIR PARTS

TILLER - - MODEL NUMBER CRT51 (HECRT51B)

TINE ASSEMBLY



KEY NO.	PART NO.	DESCRIPTION
1	532 00 44-59	Tine, Outer, L.H.
2	532 13 26-73	Clevis Pin
3	532 00 65-54	Tine, Inner, L.H.
4	532 12 46-60	Clip, Hairpin
5	532 13 27-27	Assembly, Hub and Plate, L.H.
6	873 61 06-00	Nut, Hex 3/8-24
7	810 04 06-00	Washer, Lock 3/8

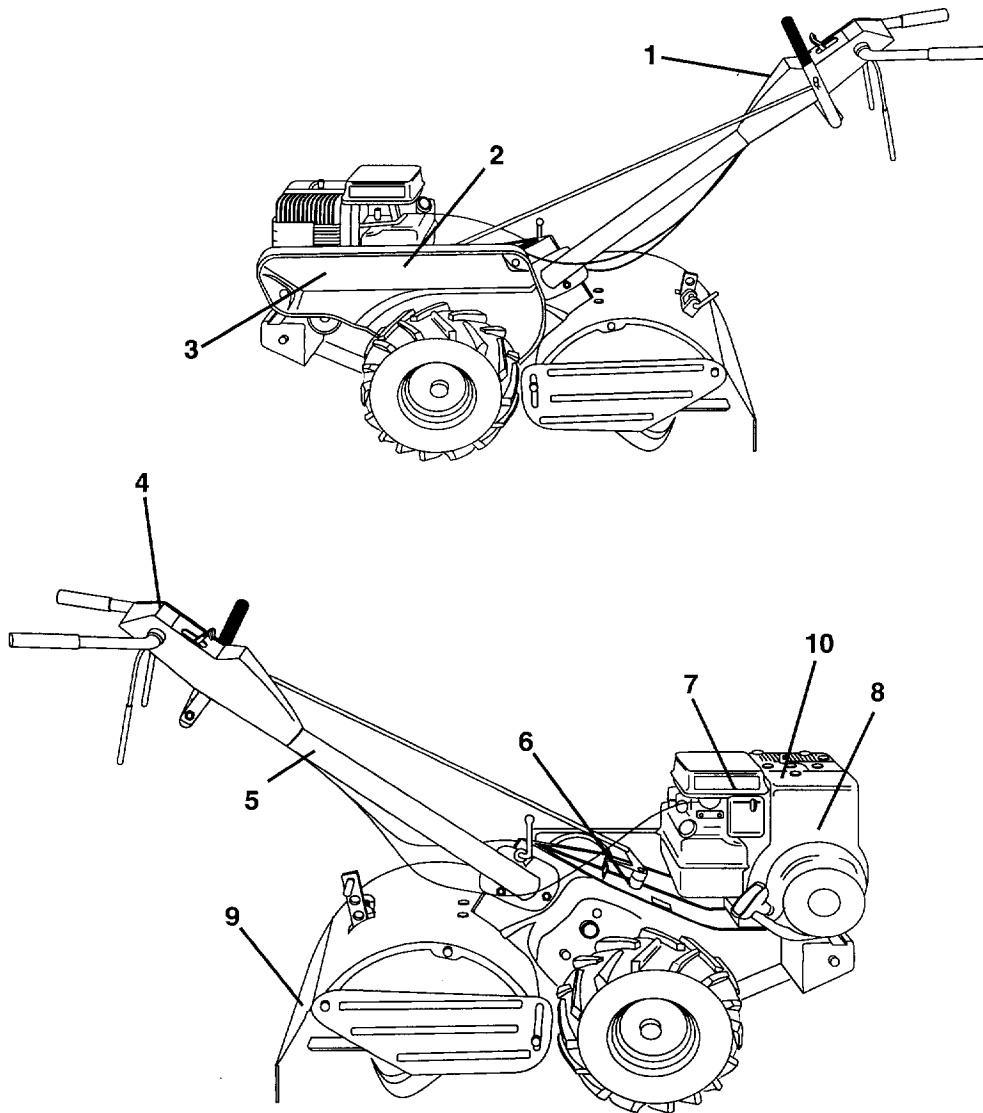
KEY NO.	PART NO.	DESCRIPTION
8	874 61 06-16	Bolt, Hex 3/8-24 x 1
9	532 00 44-60	Tine, Outer, R.H.
10	532 13 27-28	Assembly, Hub and Plate, R.H.
11	532 00 65-55	Tine, Inner, R.H.

NOTE: All component dimensions given in U.S. inches.
1 inch = 25.4 mm

REPAIR PARTS

TILLER - - MODEL NUMBER CRT51 (HECRT51B)

DECALS



KEY NO.	PART NO.	DESCRIPTION
1	532 15 08-81	Decal, Logo
2	532 15 03-21	Decal, Nameplate
3	532 15 08-82	Decal, Logo
4	532 13 69-42	Decal, Instruction, Tilling
5	532 11 06-14	Decal, Hand Placement
6	532 10 43-23	Decal, Shift Indicator
7	532 11 06-12	Decal, Caution
8	532 27 19-48	Decal, Briggs & Stratton
9	532 12 00-76	Decal, Warning, Rotating Tines
10	532 14 54-37	Decal, Europe Stand CE
--	532 15 12-24	Manual, Operator's (Euro.)
--	532 15 12-25	Manual, Operator's (Scan.)