

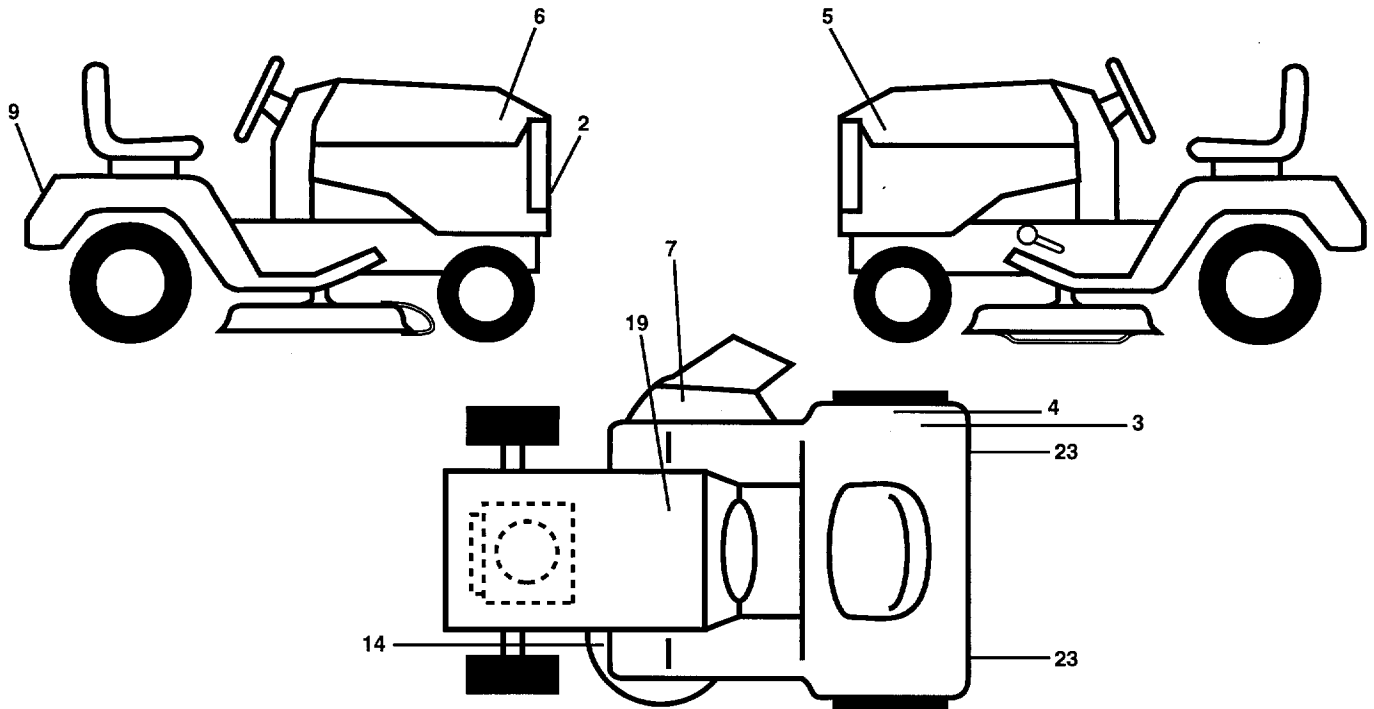
**ILLUSTRATED PARTS BREAKDOWN**

**HUSQVARNA  
19 HP GARDEN TRACTOR  
MODEL NO. GT190 (HEGT190A)  
954 82 00-51**

# REPAIR PARTS

TRACTOR - MODEL NO. GT190 (HEGT190A), PRODUCT NO. 954 82 00-51

## DECALS

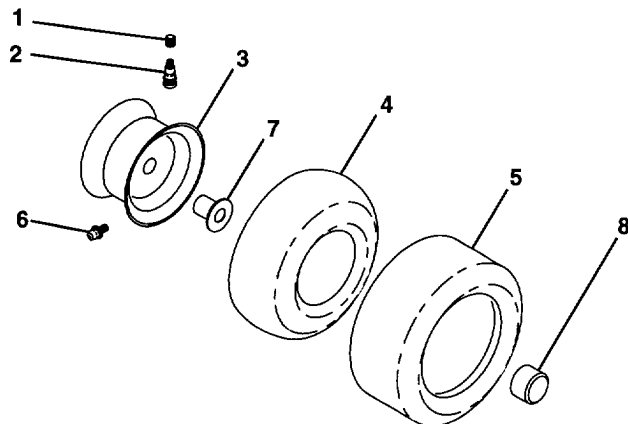


KEY NO.	PART NO.	DESCRIPTION	KEY NO.	PART NO.	DESCRIPTION
2	532 15 06-16	Decal, Grille Husqvarna	14	532 13 93-46	Decal, V-Belt Schematic
3	532 12 56-90	Decal, 100 DBA	19	532 14 64-51	Decal, Battery
4	532 14 54-37	Decal, Europe Stand CE	23	532 10 62-02	Reflector, Taillight
5	532 15 09-87	Decal, Hood LH	--	532 13 83-11	Decal, Handle Lft Height Adjust (Lift Handle)
6	532 15 09-86	Decal, Hood RH	--	532 14 52-46	Pad Ftrest Rbr Sq Generic 95
7	532 14 54-94	Decal, Mower Cutting Finger Symbol	--	532 14 52-47	Fastener Pop-In Footrest (8 per)
8	532 14 08-37	Decal, Brake Parking Saddle	--	532 15 10-00	Manual, Owner's (Euro)
9	532 14 06-17	Decal, Fender	--	532 15 10-01	Manual, Owner's (Scand)
10	532 14 54-98	Decal, Read Owners Manual Syms.			

Accessories not included with tractor:

- SH10 Sleeve Hitch
- TA128 Tire Chains
- GBD48 Snow Blade
- TA321 #55 Wheel Weights
- TR30 10" Plow

## WHEELS & TIRES

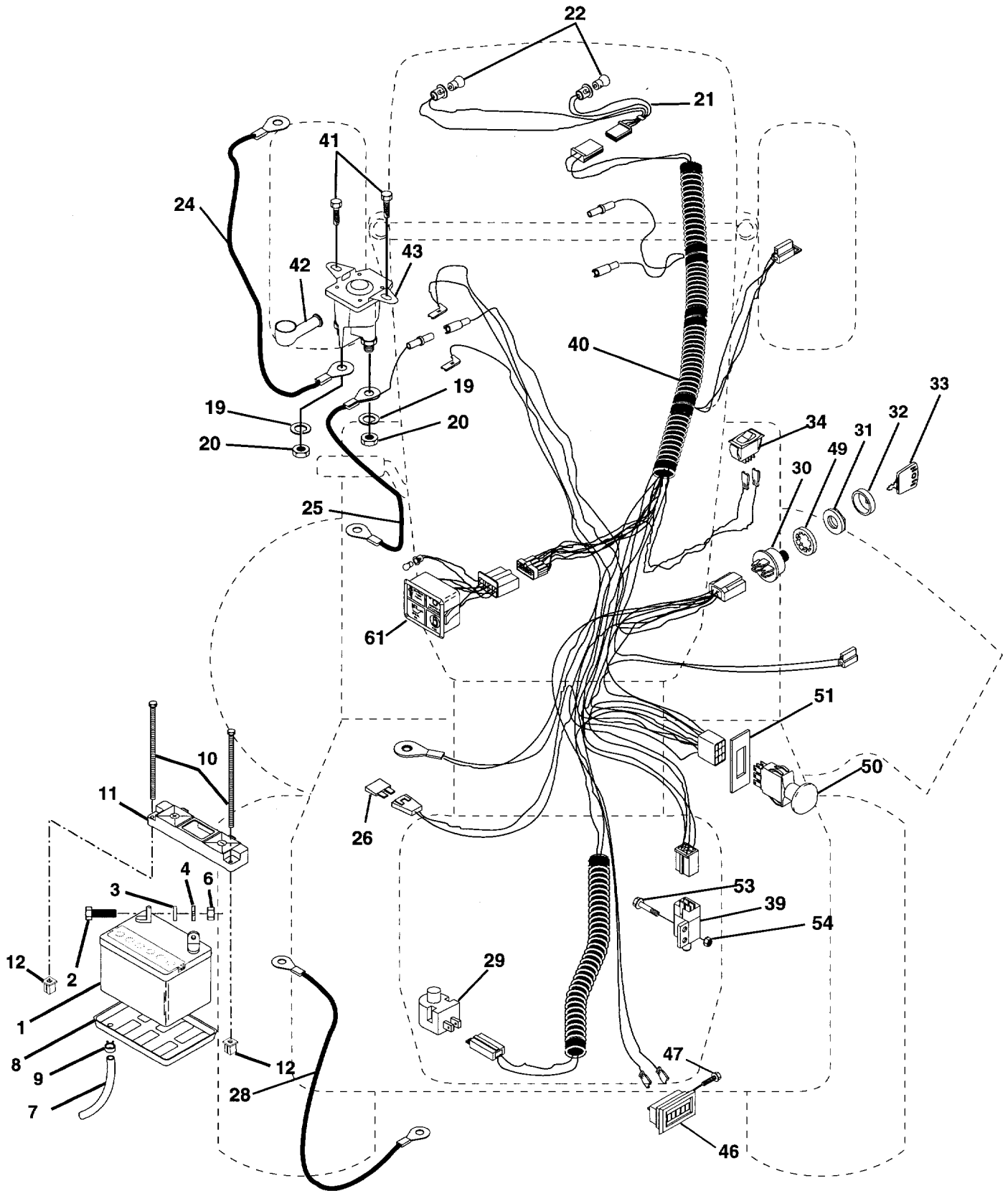


KEY NO.	PART NO.	DESCRIPTION
1	532 05 91-92	Cap, Valve, Tire
2	532 06 51-39	Stem, Valve
3	532 14 45-09	Rim Assembly, Front
	532 14 45-10	Rim Assembly, Rear
4	532 00 81-34	Tube, Front (Service Item Only)
	532 00 71-54	Tube, Rear (Service Item Only)
5	532 10 62-30	Tire, Front
	532 10 55-88	Tire, Rear
6	532 12 48-60	Fitting, Grease
7	532 12 49-59	Bearing, Flange (Front Wheel Only)
8	532 10 47-57	Cap, Hub, Axle Blk.
--	532 14 43-34	Sealant, Tire (10 oz. Tube)

**NOTE:** All component dimensions given in U.S. inches  
1 inch = 25.4 mm

# REPAIR PARTS

TRACTOR - MODEL NO. GT190 (HEGT190A), PRODUCT NO. 954 82 00-11  
ELECTRICAL



# REPAIR PARTS

TRACTOR - MODEL NO. GT190 (HEGT190A), PRODUCT NO. 954 82 00-11

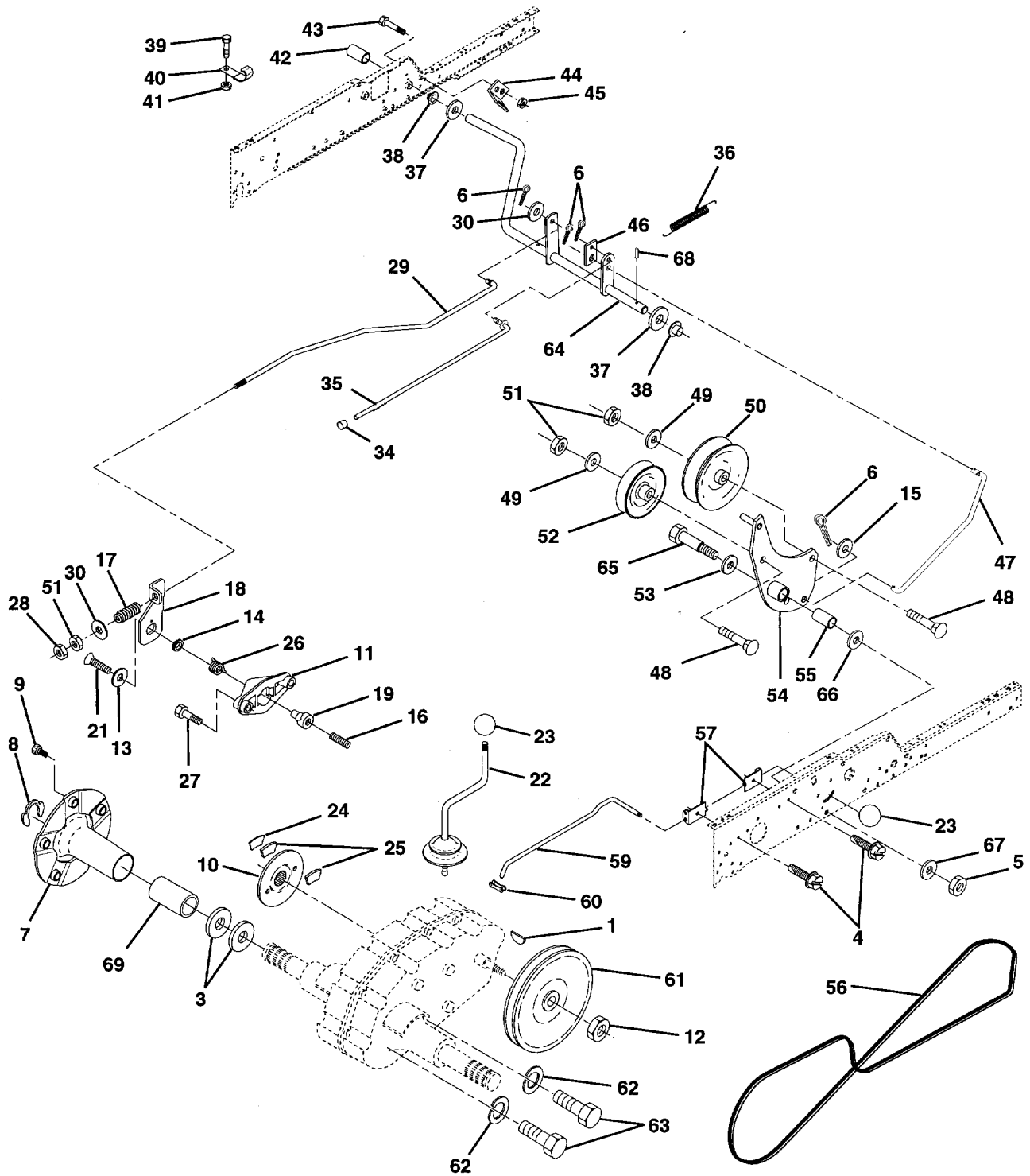
## ELECTRICAL

KEY NO.	PART NO.	DESCRIPTION
1	532 14 61-40	Battery
2	874 76 04-12	Bolt Hex Head 1/4-20 x 3/4
3	810 04 04-00	Washer, Lock 1/4
4	819 09 10-16	Washer 9/32 x 5/8 x 16 Ga
6	873 22 04-00	Nut Fin Hex 1/4-20
7	532 00 76-97	Tube Plastic
8	532 12 48-86	Tray, Battery
9	532 10 95-96	Clamp, Hose
10	532 14 52-11	Bolt, Btr Frt 1/4-20 x 7-1/2 Zinc
11	532 14 52-09	Holddown Battery Dash Mount
12	532 14 57-69	Nut Push Nylon 1/4" Battery Frt.
19	810 09 04-00	Washer, Lock 1/4
20	873 35 04-00	Nut, Jam Hex 1/4-20
21	532 13 68-50	Harness Socket Light w/4152J
22	532 00 41-52	Bulb Light
24	532 12 47-80	Cable, Starter
25	532 14 61-49	Cable, Battery
26	532 10 88-24	Fuse
28	532 12 47-73	Cable, Ground
29	532 12 13-05	Switch, Plunger
30	532 14 49-21	Switch, Ign
31	532 14 04-00	Nut, Ignition Switch
32	532 14 12-26	Cover Switch Key
33	532 14 04-01	Key
34	532 11 07-12	Switch, Light
39	532 10 95-53	Intlk Switch
40	532 15 11-74	Harness Ign.
41	817 72 04-08	Screw 1/4-20 x 1/2
42	532 13 15-63	Cover, Terminal Red
43	532 14 56-73	Solenoid
46	532 11 09-40	Meter Hour
47	817 01 10-08	Screw #10-24 x 1/2
49	811 15 10-00	Washer, Lock Internal Tooth 5/8
50	532 14 04-04	Switch, PTO
51	532 14 04-05	Ring Retainer PTO
53	871 03 10-08	Screw Hex Washer Hd #10-32 x 1
54	873 95 10-00	Nut Keps #10-32
61	532 13 81-01	Light Pkg Asm
62	532 11 01-43	Bulb, Light Pkg.

**NOTE:** All component dimensions given in U.S. inches  
1 inch = 25.4 mm

# REPAIR PARTS

TRACTOR - MODEL NO. GT190 (HEGT190A), PRODUCT NO. 954 82 00-51  
GROUND DRIVE



# REPAIR PARTS

TRACTOR - MODEL NO. GT190 (HEGT190A), PRODUCT NO. 954 82 00-51

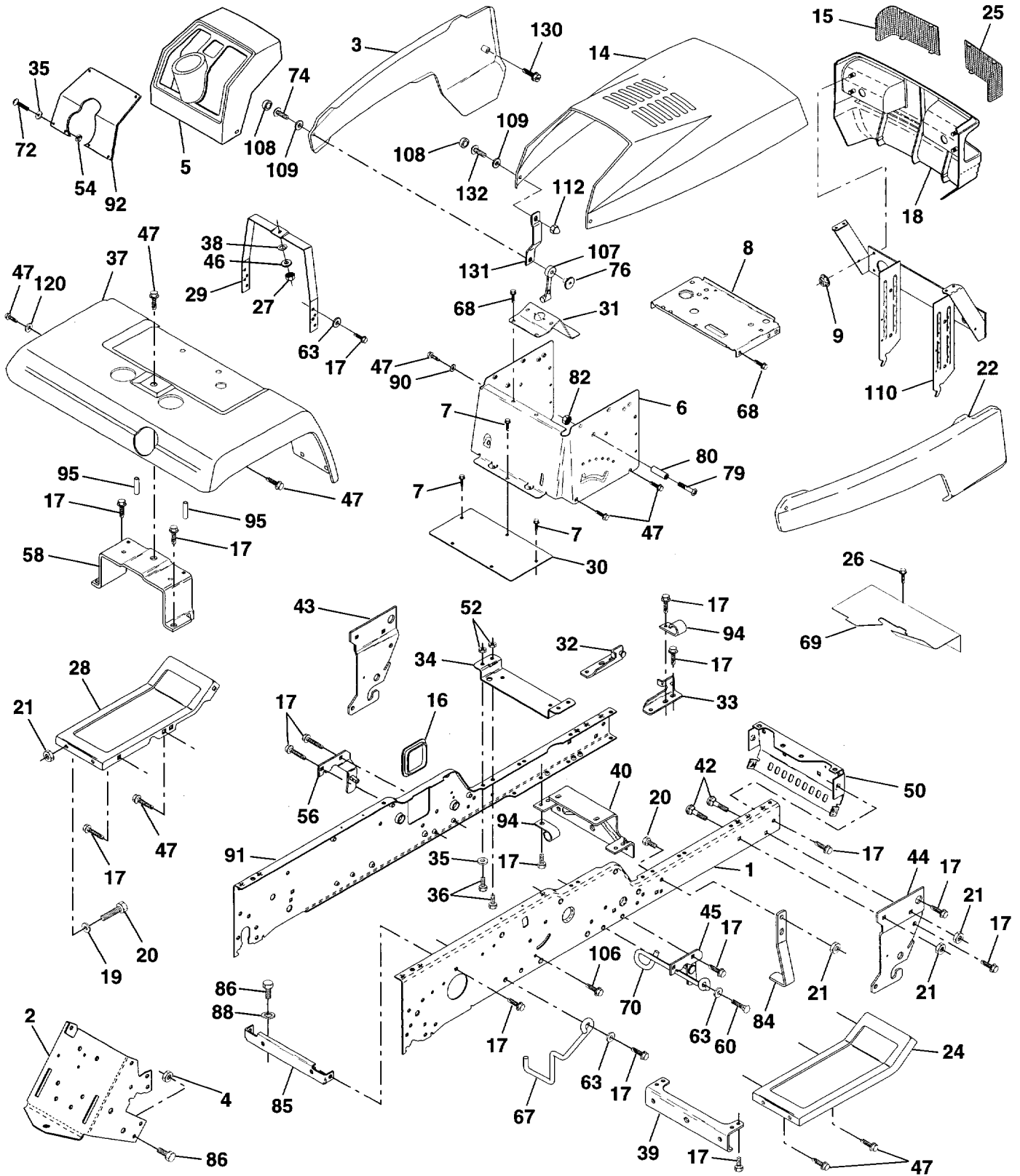
## GROUND DRIVE

KEY NO.	PART NO.	DESCRIPTION	KEY NO.	PART NO.	DESCRIPTION
1	532 12 47-08	Key Woodruff	38	532 15 00-35	Nyliner
3	532 00 75-63	Washer Thrust Axle Harden	39	874 32 10-16	Screw Fin #10-24 x 1
4	817 49 05-08	Screw Thdrol 5/16-18 x 1/2 TYT	40	532 00 53-04	Actuator Interlock Switch
5	873 68 06-00	Nut Crownlock 3/8-16	41	873 63 10-00	Nut Lock #10-24
6	876 02 04-12	Pin Cotter 1/8 x 3/4	42	532 12 35-33	Cover Pedal
7	532 14 91-76	Wheel Hub Asm.	43	874 76 04-12	Bolt Hex Head 1/4-20 x 3/4
8	812 00 00-34	Ring Klip	44	532 10 46-01	Bracket Interlock
9	532 14 00-80	Bolt Hub	45	873 80 04-00	Nut Lock W/Insert 1/4-20
10	532 14 25-09	Disc Brake	46	532 14 51-70	Retainer Spring
11	532 13 69-27	Yoke Brake Disc	47	532 13 82-28	Clutch Rod
12	532 00 92-04	Locknut 1/2-20	48	872 11 06-14	Bolt Carriage 3/8-16 x 1-3/4 Gr 5
13	532 13 94-19	Washer Special	49	819 13 14-13	Washer 13/32 x 7/8 x 13 Ga
14	532 13 89-01	Bushing	50	532 13 14-94	Pulley Idler Flat
15	819 13 13-16	Washer 13/32 x 13/16 x 16 Ga	51	873 68 06-00	Nut Crownlock 3/8-16 UNC
16	532 14 30-12	Set Screw 1/4-28 x 3/4	52	532 13 91-23	Pulley Idler Grooved
17	532 12 69-09	Spring	53	532 00 02-07	Washer Hardened
18	532 13 71-04	Lever Brake	54	532 13 83-90	Clutch Arm Asm
19	532 13 69-26	Cam Brake Disc	55	532 10 57-06	Bearing, Idler
21	823 26 04-12	Screw Flat Head 1/4-28 x 3/4	56	532 13 71-53	V-Belt
22	532 12 48-63	Gearshift Lever Assembly	57	532 14 17-56	Bracket Shift Rod Hi-Lo
23	532 12 14-66	Knob	59	532 12 22-53	Shift RodHi-Lo
24	532 13 69-25	Support Puck Brake	60	532 12 22-68	Spring Clip Connecting Link
25	532 13 69-23	Puck Brake Top	61	532 13 75-24	Pulley Transaxle
26	532 13 75-52	Spring Return	62	810 04 07-00	Washer Lock 7/16
27	817 49 05-28	Screw Hex Wsh Thd 5/16-18 x 1-3/4	63	874 76 07-20	Bolt Fin Hex 7/16-14 x 1-1/4
28	873 35 06-00	Nut Hex Jam 3/8-16	64	532 13 76-49	Shaft Clutch/Brake Pedal
29	532 13 72-13	Brake Rod	65	532 06 76-09	Bolt Shoulder
30	819 13 16-16	Washer 13/32 x 1 x 16 Ga	66	532 14 02-96	Washer Hardened
31	876 02 03-12	Pin Cotter 3/32 x 3/4	67	819 13 13-12	Washer 13/32 x 13/16 x 12 Ga.
34	532 07 16-73	Cap Plunger	68	532 00 51-42	Pin Roll
35	532 13 76-48	Rod Parking Brake	69	532 13 63-27	Hub Cover
36	532 14 94-12	Spring Extension			
37	532 12 17-49	Washer 25/32 x 1-1/4 x 16 Ga			

**NOTE:** All component dimensions given in U.S.  
1 inch = 25.4 mm

# REPAIR PARTS

TRACTOR - MODEL NO. GT190 (HEGT190A), PRODUCT NO. 954 82 00-51  
CHASSIS AND ENCLOSURES



# REPAIR PARTS

TRACTOR - MODEL NO. GT190 (HEGT190A), PRODUCT NO. 954 82 00-51

## CHASSIS AND ENCLOSURES

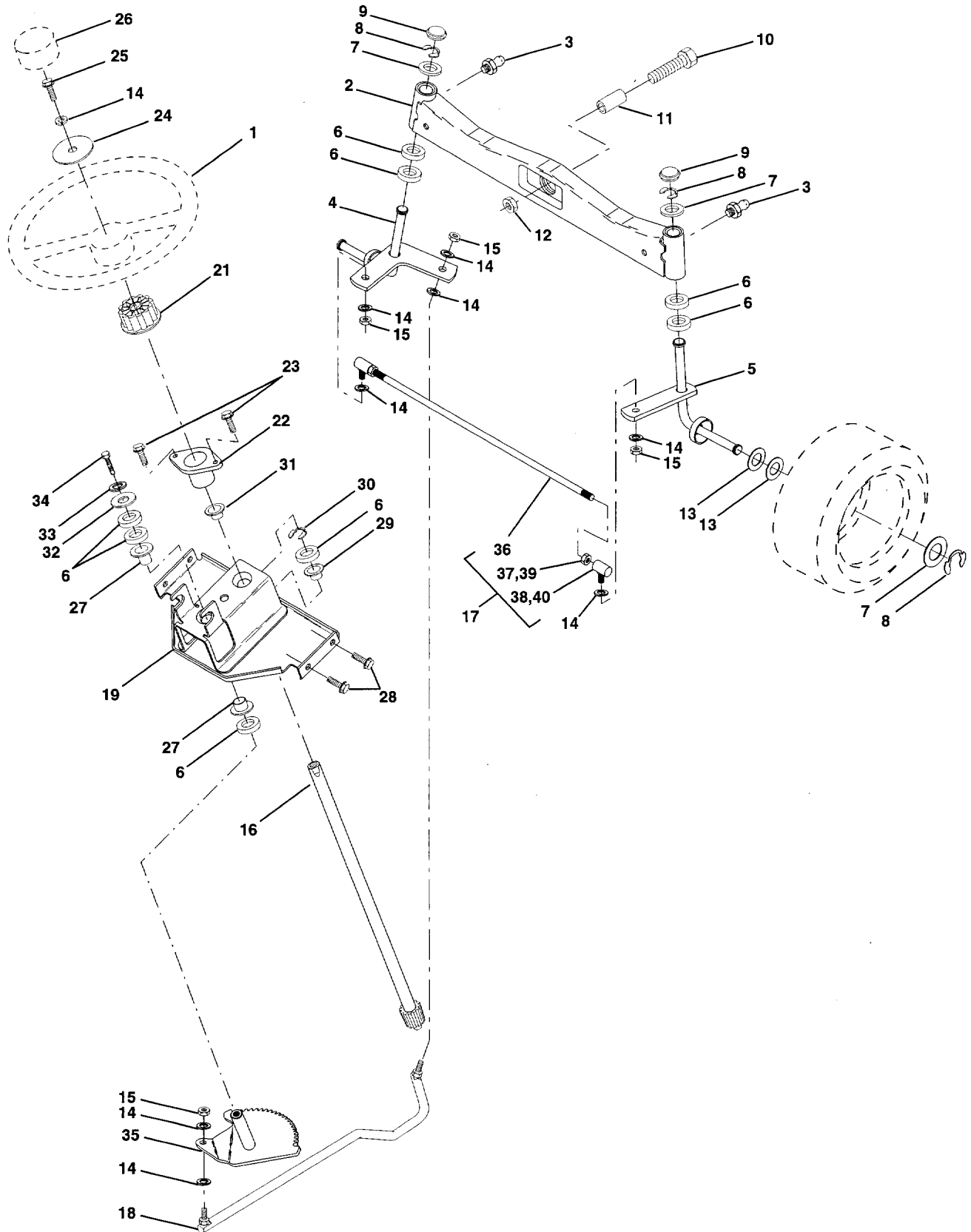
KEY NO.	PART NO.	DESCRIPTION	KEY NO.	PART NO.	DESCRIPTION
1	532 15 02-53	Rail, Frame RH	46	819 09 12-16	Washer 9/32 x 3/4 x 16 Ga.
2	532 14 05-06	Drawbar, Gt	47	817 49 06-08	Screw Thdrol 3/8-16 x 1/2
3	532 15 04-78	Panel Asm., Side LH	50	532 13 65-75	Bracket, Chassis Front
4	873 68 07-00	Nut, Crown Lock 7/16-14 UNC	52	873 68 05-00	Nut, Crown Lock 5/16-18
5	532 14 04-52	Dash, Plastic Black	54	873 51 05-00	Nut 5/16-18
6	532 15 02-73	Dash Lower VGT One-Piece	56	532 13 84-61	Bracket Asm., Susp Chassis Lh
7	817 72 04-08	Screw, Thd Cut 1/4-20 x 1/2	58	532 13 71-13	Bracket Asm., Fender
8	532 14 51-66	Support, Battery	60	817 49 06-20	Screw Thdrol 3/8-16 x 1-1/4
9	532 10 80-67	Nut Pal	63	819 13 16-14	Washer 13/32 x 1 x 14 Ga.
14	532 15 04-77	Hood Asm., Pnt	67	532 14 07-37	Guide Belt Trans VGT
15	532 12 42-51	Lens, Headlight RH	68	817 49 05-08	Screw, Thdrol 5/16-18 x 1/2
16	532 12 17-94	Cover, Access	69	532 14 00-23	Shield Heat Muffler
17	817 49 06-12	Screw, Thdrol 3/8-16 x 3/4	70	532 13 71-59	Guide, Belt Mid Span
18	532 12 73-20	Grille	72	874 18 05-12	Screw, Mach Trhd 5/16-18 x 3/4
19	819 13 13-12	Washer 13/32 x 13/16 x 12 Ga.	74	874 19 10-08	Screw, Machine #10-24
20	874 76 06-16	Bolt, Fin Hex 3/8-16 x 1	76	532 12 50-04	Nut, Weld #10-24
21	873 68 06-00	Nut, Crownlock 3/8-16Unc	79	874 98 10-20	Screw, Machine #10-24 x 1/4
22	532 15 04-79	Panel Asm., Side RH	80	532 00 72-06	Spacer, Split
24	532 14 72-02	Footrest, RH	82	873 73 10-00	Nut #10-24
25	532 12 42-50	Lens Headlight LH	84	532 14 29-92	Stop, Over Center 44" 20/23" T. 94
26	817 49 05-12	Screw Thdrol 5/16-18 x 3/4 TYT	85	532 14 49-11	Bracket, Srpport. Transaxle VGT
27	873 22 04-00	Nut Fin Hex 1/4-20	86	874 76 07-16	Bolt, Fin Hex 7/16-14 Unc x 1
28	532 14 72-03	Footrest, LH	88	810 04 07-00	Washer, Lock Hvy HLCL SPR 7/16
29	532 14 52-05	Bracket, Support Dash	90	811 05 06-00	Washer, Lock External Tooth 3/8
30	532 14 84-11	Saddle	91	532 14 47-35	Rail, Frame Lh
31	532 14 51-83	Brace, Support Steering	92	532 15 07-61	Plate PNT DASH
32	532 14 13-15	Bracket Asm., Frame Pivot Lh	94	532 10 02-07	Clip, Fuel Line
33	532 14 13-14	Bracket Asm., Frame Pivot Rh	95	532 10 55-31	Push Nut, Nylon
34	532 14 21-31	Bracket, Engine Support Rear	106	532 13 87-76	Screw Thdrol. Hex Hd Zinc Mur
35	819 11 11-16	Washer 11/32 x 11/16 x 16 Ga.	107	532 10 98-08	Latch, Chute Blk
36	874 78 05-12	Bolt, Fin Hex 5/16-18 x 3/4	108	532 11 03-56	Cap, Snap Black
37	532 12 49-27	Fender, Pnt.	109	532 11 03-57	Cap, Washer Snap
38	810 04 04-00	Washer, Lock 1/4	110	532 15 02-00	Pivot Asm. Grille/Hood Husq. VGT
39	532 13 69-61	Bracket, Axle Front	112	532 06 08-67	Nut, Acorn, Hex #10-24
40	532 14 21-32	Bracket, Support Axle/Engine	120	819 13 16-16	Washer 13/32 x 1 x 16 Ga.
42	872 14 06-08	Bolt, Carriage 3/8-16 x 1	130	817 52 13-12	Screw, SLTD Hex Hd. W/PI Washer
43	532 13 69-39	Bracket, Spnsn Front Lh	131	532 15 01-95	Bracket Support Hood/Panel YP
44	532 13 69-40	Bracket, Spnsn Front Rh	- -	532 12 50-85	Plug, Hole
45	532 13 84-60	Bracket Asm., Susp Chassis Rh			

**NOTE:** All component dimensions given in U.S. inches  
1 inch = 25.4 mm



# REPAIR PARTS

TRACTOR - MODEL NO. GT190 (HEGT190A), PRODUCT NO. 954 82 00-51  
STEERING ASSEMBLY



# REPAIR PARTS

TRACTOR - MODEL NO. GT190 (HEGT190A), PRODUCT NO. 954 82 00-51

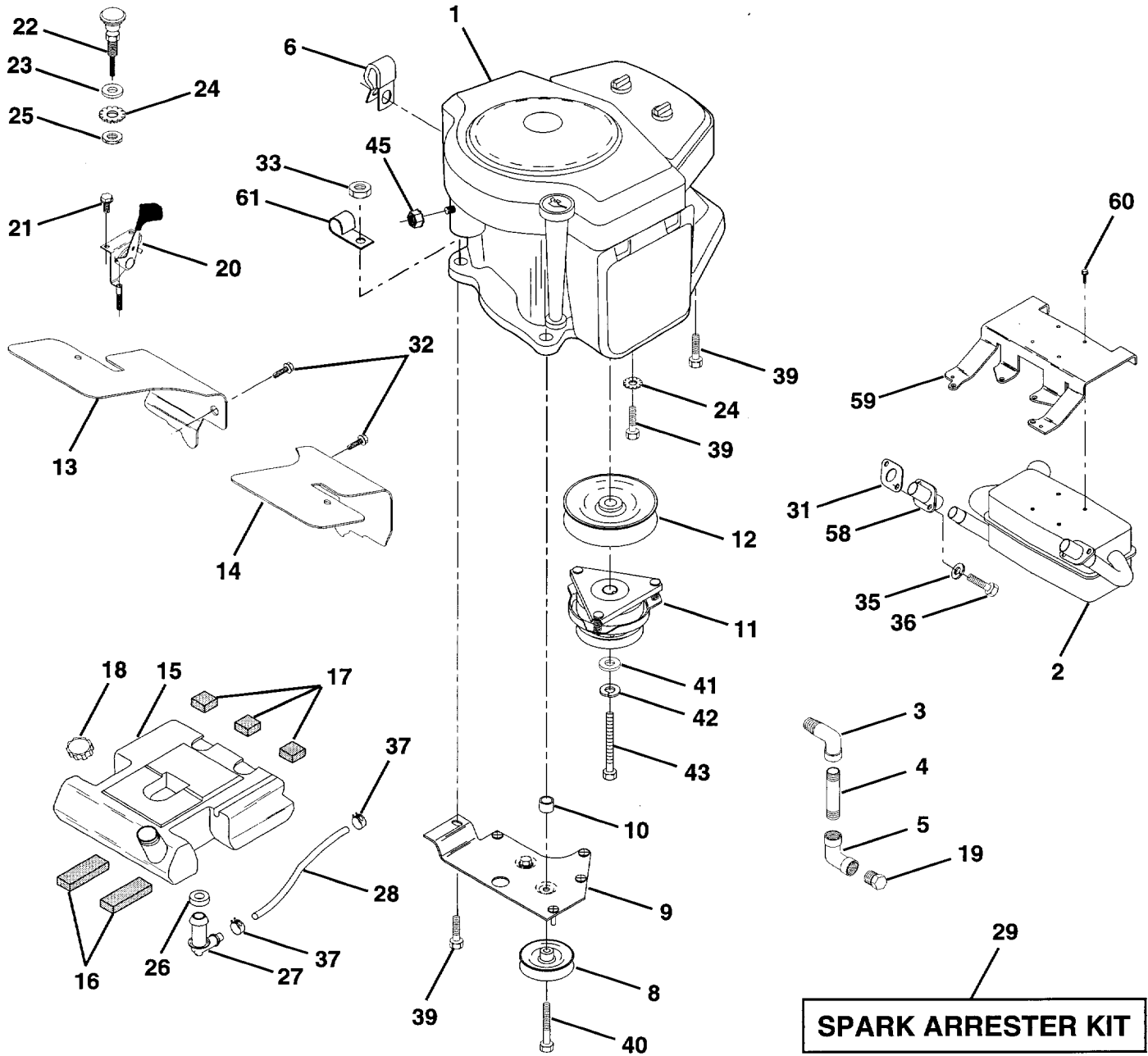
## STEERING ASSEMBLY

KEY NO.	PART NO.	DESCRIPTION
1	532 12 44-15	Wheel, Steering
2	532 13 70-94	Axle Asm., Front
3	532 12 48-36	Fitting, Grease
4	532 13 69-60	Spindle Asm, LH
5	532 13 69-59	Spindle Asm., RH
6	532 12 49-31	Bearing, Race Thrust Harden
7	532 12 17-48	Washer 25/32 x 1-5/8 x 16 Ga.
8	812 00 00-29	Ring, Klip #T5304-75
9	532 12 12-32	Cap, Spindle
10	874 78 10-44	Bolt, Fin Hex 5/8-11 x 2-3/4
11	532 13 65-18	Spacer, Brg. Axle Front
12	873 90 10-00	Nut, Lock Flange 5/8-11 Unc
13	532 12 17-49	Washer 25/32 x 1-1/4 x 16 Ga.
14	810 04 06-00	Washer, Lock Hvy Hlcl Spr 3/8
15	873 61 06-00	Nut, Fin Hex 3/8-24 Unf
16	532 14 51-03	Shaft Asm., Steering
17	532 13 73-47	Rod Asm., Tie Ball J Ball Vgt (Inc. Key No. 36-40)
18	532 13 71-55	Draglink, Ball Joint Solid Vgt
19	532 14 66-11	Support Asm., Steering Vgt
21	532 10 07-11	Adapter, Wheel Steering
22	532 12 47-20	Bushing, Strg. Blk
23	817 43 10-08	Screw, Slftp #10-16 x 1/2 Ty-b
24	819 13 38-08	Washer 13/32 x 2-3/8 x 8 Ga.
25	874 78 06-16	Bolt, Fin Hex 3/8-16 x 1 Gr. 5
26	532 12 44-16	Cap, Wheel Steering
27	532 12 49-37	Bearing, Col. Strg.
28	817 49 06-12	Screw Thdrol 3/8-16 x 3/4
29	532 10 42-39	Bearing, Flange
30	812 00 00-34	Ring, Klip Truarc #5304-75
31	532 13 81-36	Bushing, Nyliner Snap
32	819 11 16-10	Washer 11/32 x 1 x 10 Ga.
33	810 04 05-00	Washer, Lock Hvy Hlcl Spr 5/16
34	874 76 05-12	Bolt, Hex Hd 5/16-18 x 3/4
35	532 13 80-59	Gear, Sector Steering
36	532 13 71-56	Tie Rod
37	873 36 06-00	Jam Nut RH Thread
38	532 10 98-50	Joint Asm. Ball RH Thread
39	873 70 06-00	Jam Nut LH Thread
40	532 10 98-51	Joint Asm. Ball LH Thread

**NOTE:** All component dimensions given in U.S. inches  
1 inch = 25.4 mm

# REPAIR PARTS

TRACTOR - MODEL NO. GT190 (HEGT190A), PRODUCT NO. 954 82 00-51  
ENGINE



# REPAIR PARTS

## TRACTOR - MODEL NO. GT190 (HEGT190A), PRODUCT NO. 954 82 00-51 ENGINE

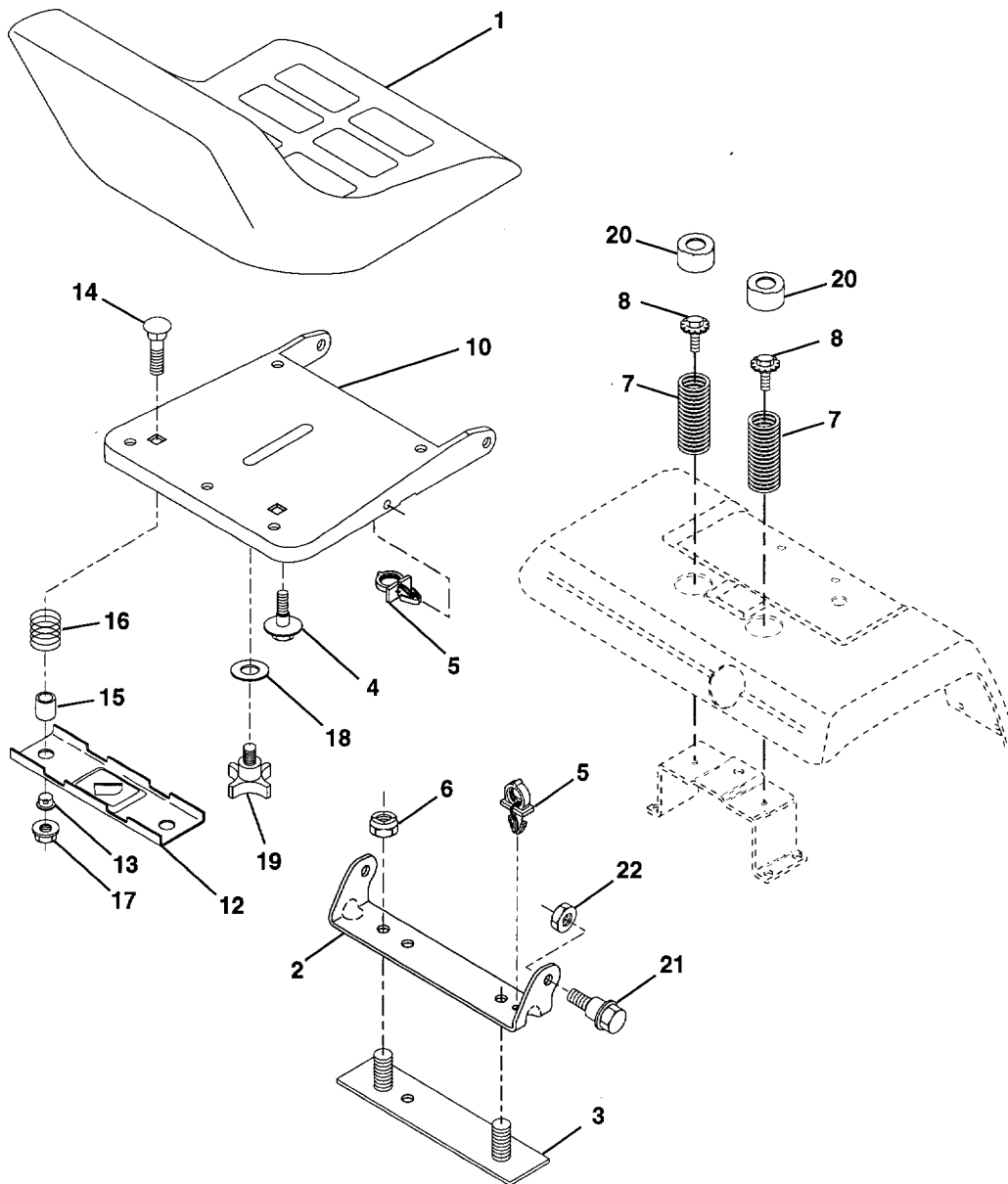
KEY NO.	PART NO.	DESCRIPTION
1	-----	Engine Briggs 42A707
2	139217	Muffler Asm Briggs (Inc. Key No. 29 & 34)
3	13240300	Elbow Street 3/8 NPT
4	13280328	Nipple Pipe 3/8NPT X 3-1/2
5	13200300	Elbow STD 90 Degree 3/8-18 NPT
6	138129	Clamp Tube Double Engine
8	121361X	Pulley V-Idler
9	145109	Keeper Asm Belt Engine VGT
10	105432X	Bushing
11	137140	Clutch Electric
12	136907	Pulley Engine VGT Elect Clutch
13	138486	Baffle Air LH Koh VGT
14	138487	Baffle Air RH Koh VGT
15	141069	Tank Fuel Rear
16	109227X	Pad Spacer
17	106082X	Pad Spacer
18	140527	Cap Asm Fuel W/Sym Vented
19	13290300	Plug Oil Drain (Order From Engine Manufacturer)
20	132747	Control Throttle
21	17720410	Screw Hex Thd Cut 1/4-20 X 5/8
22	132782	Control Choke
23	19131316	Washer 13/32 X 13/16 X 16 Ga
24	11050600	Washer Ext Tooth 3/8
25	73610600	Nut Fin Hex 3/8-24 UNF
26	3645J	Bushing
27	139227	Stem Tank Fuel
28	7834R	Fuel Line
29	132920	Kit, Spark Arrester (Optional Accessory)
31	139367	Gasket
32	17490508	Screw Thdrol 5/16-18 X 1/2
33	73800600	Nut Lock Hex W/Wash 3/8-16 UNC
35	10040500	Washer Lock 5/16
36	74570512	Screw Hex 5/16-16 UNC X 3/4
37	123487X	Clamp Hose
39	17490624	Screw Thdrol 3/8-16 X 1-1/2 TT
40	17490652	Screw Thdrol 3/8-16 X 3-1/4
41	126197X	Washer 1-1/2 OD X 15/32 ID X .250
42	10040700	Washer Lock 7/16
43	71170768	Bolt Hex 7/16-20 X 4-1/4 Ga 5
45	532128861	Nut Flange 1/4-20 Starter Nut
58	139365	Port Liner
59	139364	Muffler Mounting Brkt.
60	17190408	Screw Hex Whs Thd Cut 1/4-20 UNC
61	2751R	Clip Fuel Line

**NOTE:** All component dimensions given in U.S. inches  
1 inch = 25.4 mm

# REPAIR PARTS

TRACTOR - MODEL NO. GT190 (HEGT190A), PRODUCT NO. 954 82 00-51

## SEAT ASSEMBLY

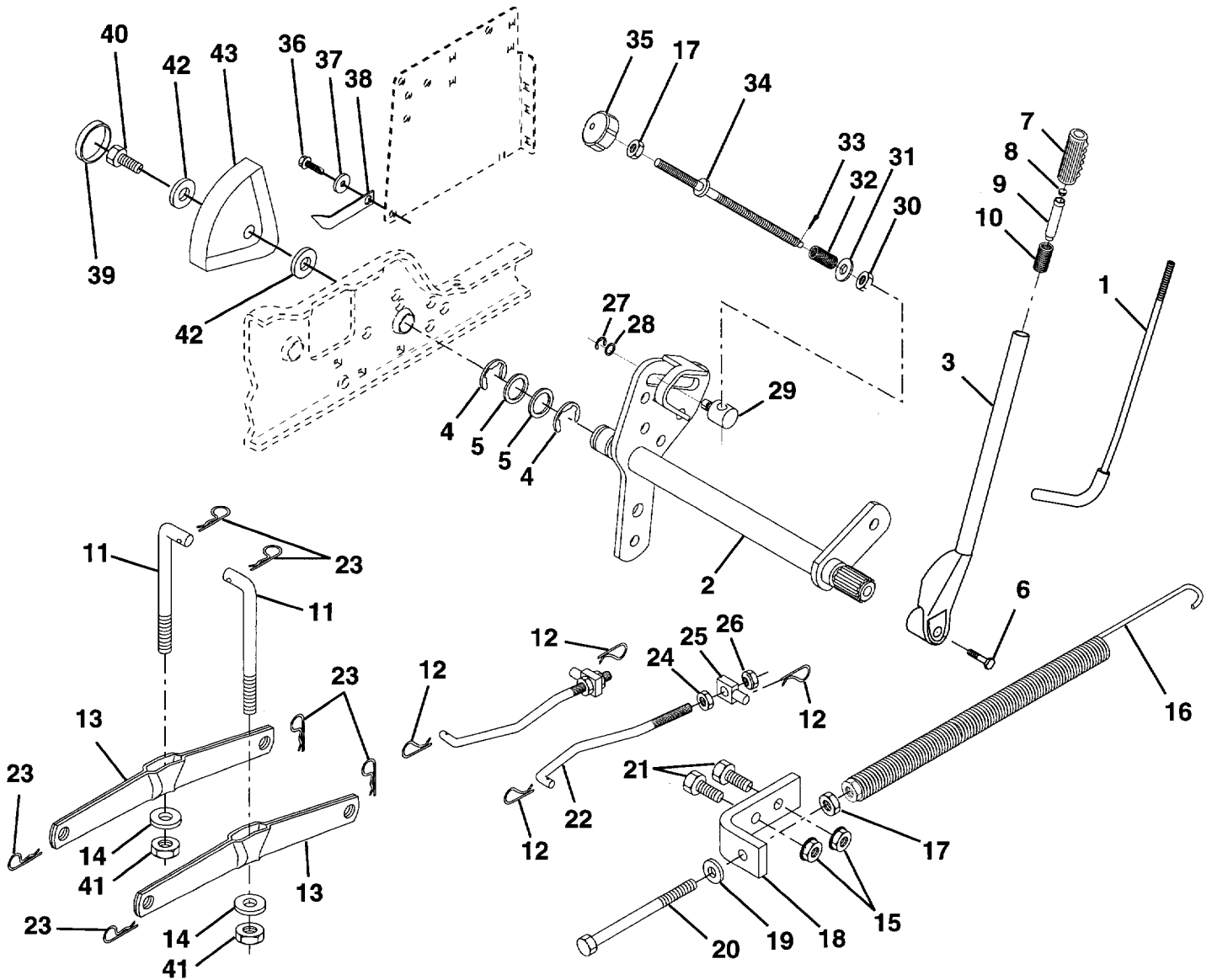


KEY NO.	PART NO.	DESCRIPTION	KEY NO.	PART NO.	DESCRIPTION
1	532 14 15-25	Seat	14	872 05 04-11	Bolt, Carriage 1/4-20 X 1-3/8
2	532 14 05-51	Bracket, Pivot Seat	15	532 12 12-49	Spacer, Split
3	532 14 06-75	Strap, Fender	16	532 12 37-40	Spring, Cprsn
4	532 12 70-18	Bolt, Shoulder 5/16-18 X .62	17	532 12 39-76	Nut, Lock 1/4 Lge Flg Gr. 5
5	532 14 50-06	Clip, Push In Hinged	18	819 17 19-12	Washer 17/32 X 1-3/16 X 12 Ga.
6	873 80 06-00	Nut, Lock Hex w/Ins. 3/8-16 Unc	19	532 12 00-68	Knob, Seat 1/2-13 Unc
7	532 12 41-81	Spring, Seat Cprsn	20	532 12 42-38	Cap, Spring Seat
8	817 49 05-08	Screw, Thdrol 5/16-18 X 1/2	21	532 13 98-88	Bolt, Shoulder 5/16-18 Unc
9	819 13 16-14	Washer 13/32 X 1 X 14 Ga.	22	873 68 05-00	Nut, Crownlock 5/16-18 Unc
10	532 14 05-52	Pan, Seat			
12	532 12 12-46	Bracket, Mounting Switch			
13	532 12 12-48	Bushing, Snap			

**NOTE:** All component dimensions given in U.S. inches  
1 inch = 25.4 mm

# REPAIR PARTS

TRACTOR - MODEL NO. GT190 (HEGT190A), PRODUCT NO. 954 82 00-51  
LIFT ASSEMBLY



# REPAIR PARTS

## TRACTOR - MODEL NO. GT190 (HEGT190A), PRODUCT NO. 954 82 00-51 LIFT ASSEMBLY

KEY NO.	PART NO.	DESCRIPTION
1	532 12 10-06	Rod Asm., Lever
2	532 14 55-42	Shaft Asm., Lift Vgt
3	532 12 10-02	Lever Asm., Lift Rh
4	812 00 00-22	E-Ring Truarc #5133-87
5	819 29 20-16	Washer 29/32 x 1-1/4 x 16 Ga.
6	874 78 06-24	Bolt, Fin Hex 3/8-16 x 1-1/2
7	532 12 56-31	Grip, Handle Fluted
8	532 12 45-26	Button, Plunger
9	532 12 23-64	Plunger, Lever Lift
10	532 12 48-74	Spring 2-1/8"
11	532 14 67-04	Link Lift
12	532 12 46-60	Retainer, Spring
13	532 13 98-68	Arm, Suspension Vgt
14	532 14 03-02	Bearing
15	873 68 06-00	Nut, Crownlock 3/8-16 Unc
16	532 12 46-87	Spring Asm., Assist Lift
17	873 35 06-00	Nut, Hex Jam 3/8-16 Unc
18	532 14 33-63	Bracket, Spring Assist
19	819 13 13-16	Washer 13/32 x 13/16 x 16 Ga.
20	532 00 53-28	Bolt, Adjust Spring Assist
21	874 76 06-16	Bolt, Fin Hex 3/8-16 x 1
22	532 12 72-18	Link, Front
23	532 12 46-70	Retainer, Spring
24	873 35 08-00	Nut, Jam Hex 1/2-13 Unc
25	532 13 01-71	Trunnion
26	873 80 08-00	Nut, Lock W/Wsh 1/2-13 Unc
27	812 00 00-37	Ring, Klip #T5304-37
28	819 15 12-16	Washer 15/32 x 3/4 x 16 Ga.
29	532 11 08-10	Trunnion, Dp Stop Dbl Thds Plt
30	532 11 08-07	Nut, Special
31	819 13 10-16	Washer 13/32 x 5/8 x 16 Ga.
32	532 13 71-50	Spring, Compression Inf Hgt
33	876 02 03-08	Pin, Cotter 3/32 x 1/2
34	532 13 71-67	Rod, Adj Lift
35	532 13 80-57	Knob, Inf 3/8-16 Unc
36	817 49 06-12	Screw, Thdrol 3/8-16 x 3/4
37	532 12 05-29	Washer, Nylon
38	532 13 83-46	Pointer, Pnt Height Indicator
39	532 12 39-35	Plug, Hole
40	817 49 05-12	Screw Thdrol 5/16-18 x 3/4
41	873 54 06-00	Nut, Crownlock 3/8-24
42	819 11 24-10	Washer 11/32 x 1 -1/2 x 10 Ga.
43	532 12 39-34	Scale, Indicator Height

**NOTE:** All component dimensions given in U.S. inches  
1 inch = 25.4 mm





# REPAIR PARTS

TRACTOR - MODEL NO. GT190 (HEGT190A), PRODUCT NO. 954 82 00-51

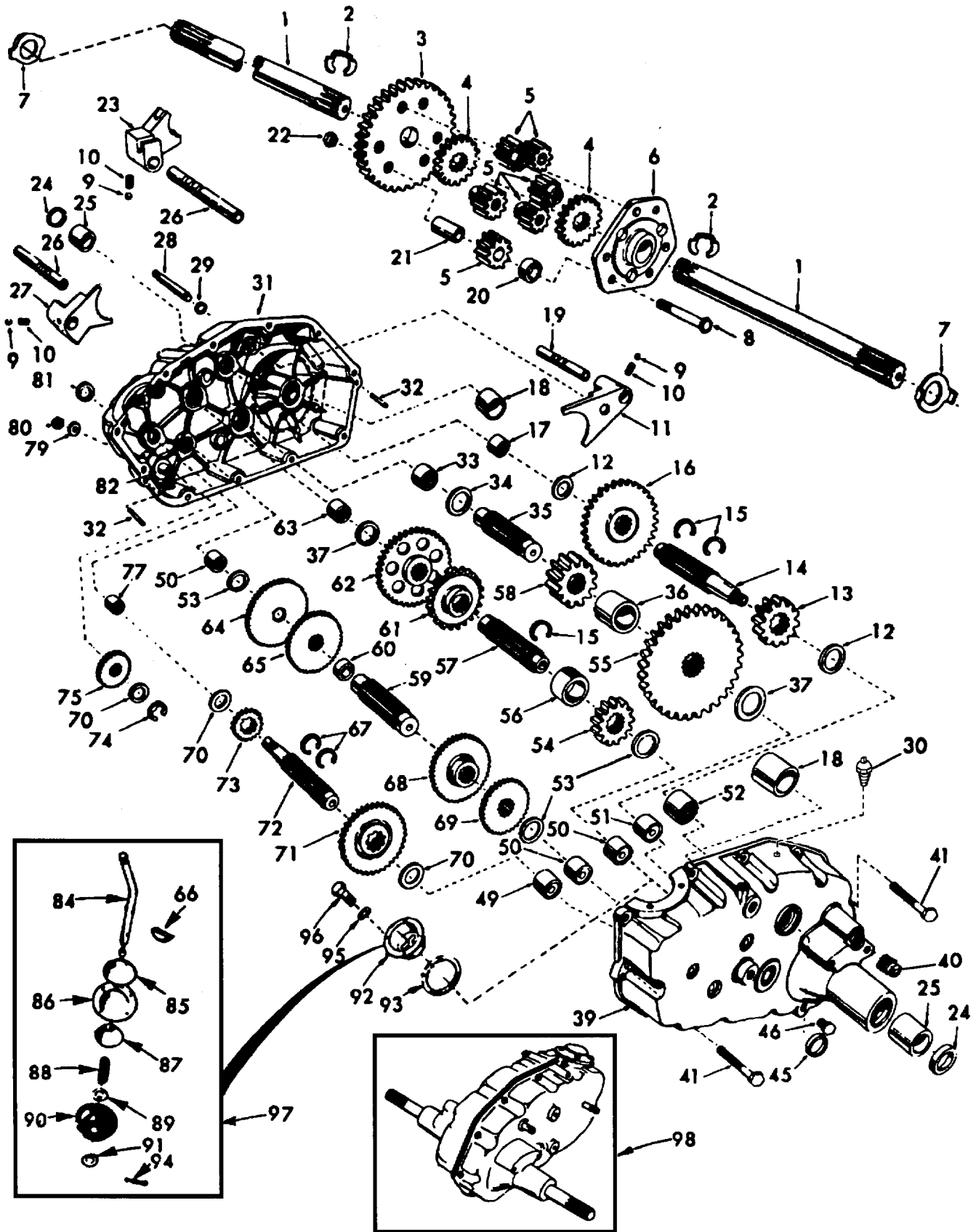
## MOWER DECK

KEY NO.	PART NO.	DESCRIPTION	KEY NO.	PART NO.	DESCRIPTION
1	532 13 64-57	Deck Asm., Mower 50" Vented	42	872 14 05-06	Bolt, Carriage 5/16-18 Unc x 3/4
2	873 68 05-00	Nut, Crownlock 5/16-18 Unc	43	532 13 64-60	Arm, Idler Secondary
3	872 11 05-06	Bolt, Carriage 5/16-18 x 3/4	44	532 12 20-52	Spacer, Retainer
4	532 12 50-74	Runner, Mower LH	45	873 68 06-00	Nut, Crownlock 3/8-16 Unc
5	532 13 84-57	Bracket Asm., Sway Bar	46	874 76 06-28	Bolt, Fin Hex 3/8-16 Unc x 1-3/4
6	532 12 46-70	Retainer, Spring	47	532 13 72-00	Cover, Mandrel RH
7	532 13 08-32	Arm Suspension, Rear	48	532 13 77-29	Screw, Thd Roll 1/4-20 x 5/8
8	532 85 08-57	Bolt 3/8-24 x 1.25 Gr.8 Patched	49	532 13 65-74	Cover, Mandrel LH
9	810 03 06-00	Washer, Lock Hvy 3/8 Unplated	50	532 13 72-72	Arm, Idler Primary
10	532 14 02-96	Washer, Hard Blade Mower Vented	51	532 13 72-73	Spring, Secondary
11	532 13 73-80	Blade (3 Required)	52	532 13 92-45	Pulley, Idler V Groove
12	532 12 98-95	Bearing, Ball #6204 (Mandrel)	53	532 13 77-89	Shield, Idler
13	532 13 75-53	Shaft Asm. W/Lower Brg (Includes Key No. 12)	54	532 13 95-73	V-Belt, Mower Primary
14	532 13 71-52	Housing, Mandrel 50" Vent	55	532 14 49-59	V-Belt, Mower Secondary
15	532 11 04-85	Bearing, Ball Mandrel	56	532 13 86-87	Spring, Primary
16	532 14 03-29	Stripper, Mower Vented	57	532 13 65-77	Bar Asm., Wheel Gauge
17	532 10 67-35	Rod, Hinge	58	532 13 39-57	Wheel, Gauge
18	819 11 10-16	Washer 11/32 x 5/8 x 16 Ga.	59	532 13 76-44	Bolt, Shoulder
19	532 10 53-04	Cap, Sleeve	60	532 13 90-31	Pin, Clevis
20	532 12 37-13	Spring, Torsion Deflector	61	532 13 65-73	Bracket, Wheel Gauge
21	532 13 76-07	Bracket, Deflector	62	532 13 39-43	Washer Hardened
22	532 11 04-52	Nut, Push	63	872 11 06-12	Bolt Carriage 3/8-16 x 1-1/2
23	532 11 05-09	Shield, Deflector Mower	64	819 12 14-14	Washer 3/8 x 7/8 x 14 Ga.
24	532 13 63-20	Runner, RH	65	532 10 24-03	Pulley Idler Flat Mower
25	819 11 12-16	Washer 11/32 x 3/4 x 16 Ga.	66	532 13 96-22	Keeper, Belt Idler 50" Vent
27	819 13 13-16	Washer 13/32 x 13/16 x 16 Ga.	67	873 93 06-00	Nut, Center Lock 3/8-16
28	532 13 28-23	Spacer, Spring Stop Idler	94	874 76 06-16	Bolt, Fin Hex 3/8-16 UNC x 1
29	873 80 06-00	Nut, Lock Hex W/Wsh 3/8-16 Unc	95	532 13 22-74	Bracket, Asm. Noseroller LH
30	532 13 87-76	Screw Thdrol Hex Head	96	532 13 22-73	Bracket, Asm. Noseroller RH
31	532 13 72-66	Nut, Flg Top Lock Cntr 9/16	97	819 17 14-16	Washer 17/32 x 7/8 x 16 Ga.
32	532 12 98-61	Pulley, Mandrel	98	532 13 22-64	Roller, Nose
33	532 12 99-63	Washer, Spacer Mower Vented	99	872 11 06-14	Bolt, Carriage 3/8-16 x 1-3/4 Gr. 5
34	872 14 06-10	Bolt, Carriage 3/8-16 x 1-1/4	--	532 14 36-51	Mandrel Asm (Includes Key Nos. 8-10, 12-15, 31 and 33)
35	872 11 06-16	Bolt, Carriage 3/8-16 x 2	--	532 14 10-51	Mower Asm Service (Std. Deck Order separately all Nose Roller and all Gauge Wheel components)
36	872 11 06-08	Bolt, Carriage 3/8-16 x 1 Gr. 5			
37	532 13 71-66	Stiffener, Arm Idler			
38	532 13 75-54	Keeper, Belt Idler			
39	532 13 14-94	Pulley, Idler Flat			
40	532 13 65-72	Pulley, Driven			

**NOTE:** All component dimensions given in U.S. inches  
1 inch = 25.4 mm

# REPAIR PARTS

TRACTOR - MODEL NO. GT190 (HEGT190A), PRODUCT NO. 954 82 00-51  
TRANSAXLE HYDRO GEAR MODEL NUMBER 210-3010



# REPAIR PARTS

TRACTOR - MODEL NO. GT190 (HEGT190A), PRODUCT NO. 954 82 00-51

TRANSAXLE HYDRO GEAR MODEL NUMBER 210-3010

KEY NO.	PART NO.	DESCRIPTION	KEY NO.	PART NO.	DESCRIPTION
1	532 12 46-62	Axle Shaft	52	532 00 81-19	Needle Bearing
2	812 00 00-34	Retaining Ring	53	532 00 42-20	Thrust Bearing Race
3	532 00 41-99	Final Drive Gear	54	532 00 42-09	3rd Reduction Pinion, Low
4	532 00 42-16	Differential Gear	55	532 12 46-68	4th Reduction Gear
5	532 00 42-15	Differential Pinion	56	532 00 44-42	3rd Reduction Pinion Spacer
6	532 00 42-17	Differential Carrier	57	532 00 41-95	2nd Reduction Gear Shaft
7	532 12 46-74	Axle Thrust Washer	58	532 00 42-14	Final Drive Pinion
8	874 02 06-52	Bolt, Hex Head 3/8-24 x 3-1/4 (1 " Thread Length)	59	532 00 41-94	1st Reduction Gear Shaft
9	532 12 46-97	Steel Ball	60	532 00 75-28	1st Reduction Shaft Spacer
10	532 13 72-61	Spring Shift Fork Detent	61	532 12 46-66	3rd Reduction Pinion High
11	532 00 49-85	Shift Fork, High-Low Range	62	532 12 46-65	2nd Reduction Gear
12	532 12 49-31	Thrust Bearing Race	63	532 00 73-98	Needle Bearing
13	532 12 46-67	4th Reduction Pinion	64	532 12 46-64	Low Speed Gear and 2nd Reduction Pinion Cluster
14	532 13 71-25	3rd Reduction Gear Shaft	65	532 00 42-04	Reverse Gear
15	532 12 46-77	Snap Ring, Crescent Type	66	532 00 28-98	Key, Hi-Pro 1/8 x 17/32
16	532 12 46-79	High-Low Range Gears	67	812 00 00-33	Snap Ring, Crescent Type
17	532 00 81-18	Needle Bearing	68	532 00 42-05	Intermediate Speed Gear
18	532 12 47-05	Sintered Iron Bearing	69	532 12 50-99	High Speed Gear
19	532 12 22-38	Shift Fork Shaft, High-Low Range	70	532 00 13-70	Thrust Bearing Race
20	532 00 42-18	Differential Pinion Spacer	71	532 12 46-81	Intermediate and High Speed Cluster Pinions
21	532 12 46-73	Differential Pinion Bushing	72	532 13 91-20	Input Shaft
22	532 12 47-01	Gripco Centerlock Nut 3/8-24	73	532 00 42-01	Low Speed Pinion
23	532 00 62-62	Shift Fork, R.H.	74	812 00 00-08	E-Ring
24	532 12 46-98	Oil Seal	75	532 00 11-53	Reverse Idler Gear
25	532 12 47-09	Sintered Iron Bearing	77	532 00 68-03	Needle Bearing
26	532 13 91-11	Shift Fork Shaft	79	532 00 11-67	Sealing Washer
27	532 00 49-86	Shift Fork, L.H.	80	873 36 07-00	Nut, Hex, Jam 7/16-20
28	532 12 22-54	Shift Shaft, High-Low Range	81	532 12 46-75	Oil Seal
29	532 00 62-69	Oil Seal	82	532 13 69-84	Reverse Idler Shaft
30	532 00 58-55	Pressure Relief Valve	84	532 00 53-84	Gearshift Lever, Bent
31	532 13 95-38	Gearcase, Reverse Idler Shaft and Bearings, R.H. (Includes Key No.'s 17,18, 25, 33, 50, 63, 77 and 82)	85	532 00 29-78	Gearshift Cap
32	532 00 62-77	Dowel Pin	86	532 12 46-82	Gearshift Ball Cover and Pin
33	532 00 42-25	Needle Bearing	87	532 12 47-04	Shift Lever Guide Ball, Keyed
34	532 00 73-96	Thrust Bearing Race	88	532 00 49-24	Spring
35	532 00 41-98	4th Reduction Gear Shaft	89	819 15 15-16	Washer 15/32 x 15/16 x 16 Gauge
36	532 12 46-63	4th Reduction Gear Spacer	90	532 11 05-42	Shift Mechanism Seal
37	532 00 73-95	Thrust Bearing Race	91	819 18 15-11	Washer 9/16 x 15/16 x 12 Gauge
39	532 13 95-36	Gearcase and Bearings, L.H. (Includes Key Numbers 18, 25, 49, 50 (2), 51 and 52)	92	532 00 00-75	Gearshift Gate and Reinforcement
40	813 32 04-00	Pipe Plug 1/2-14 N.P.T.	93	532 00 62-74	Shift Ball Cover Gasket
41	817 58 05-20	Bolt, Hex 5/16-18 UNC x 1-1/4	94	876 02 04-12	Cotter Pin 1/8 x 3/4
45	532 00 62-71	Oil Seal	95	810 04 05-00	Washer, Lock 5/16
46	813 06 02-00	Pipe Plug 1/4-18 N.P.T.	96	874 76 05-14	Bolt, Hex Head 5/16-18 UNC x 7/8
49	532 12 47-92	Needle Bearing	97	532 12 48-63	Gear Shift Lever Assembly
50	532 00 42-22	Needle Bearing	98	532 14 03-32	Transaxle, 6 Speed, Complete Assembly
51	532 00 15-29	Needle Bearing			

**NOTE:** All component dimensions given in U.S. inches  
1 inch = 25.4mm