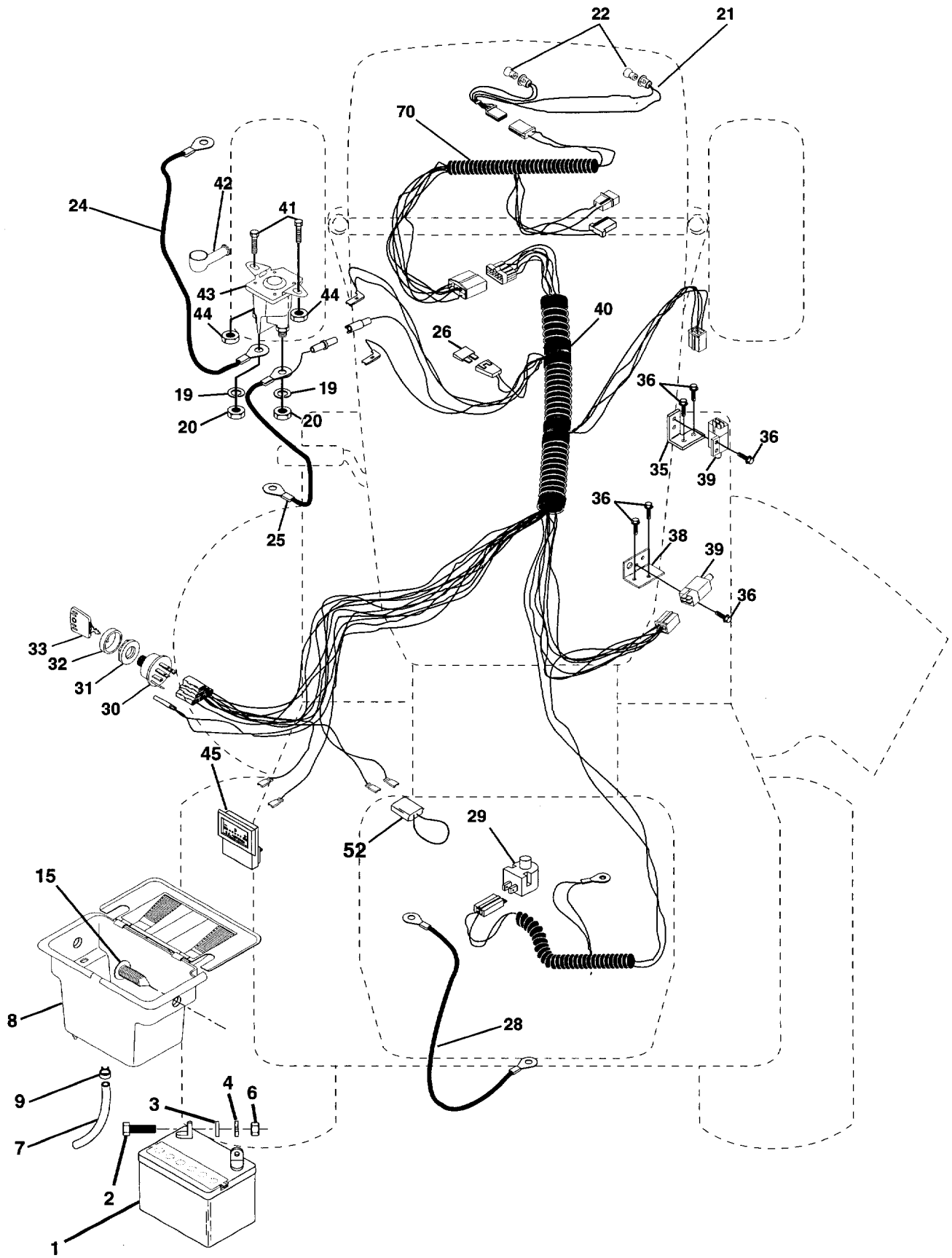


ILLUSTRATED PARTS BREAKDOWN

**HUSQVARNA
15.5 HP 42" LAWN TRACTOR
MODEL NO. YT150 (HEYT150A)
954 82 00-31**

REPAIR PARTS

TRACTOR -- MODEL NO. YT150 (HEYT150A) PRODUCT NO. 954 82 00-31
ELECTRICAL



REPAIR PARTS

TRACTOR - - MODEL NO. YT150 (HEYT150A) PRODUCT NO. 954 82 00-31

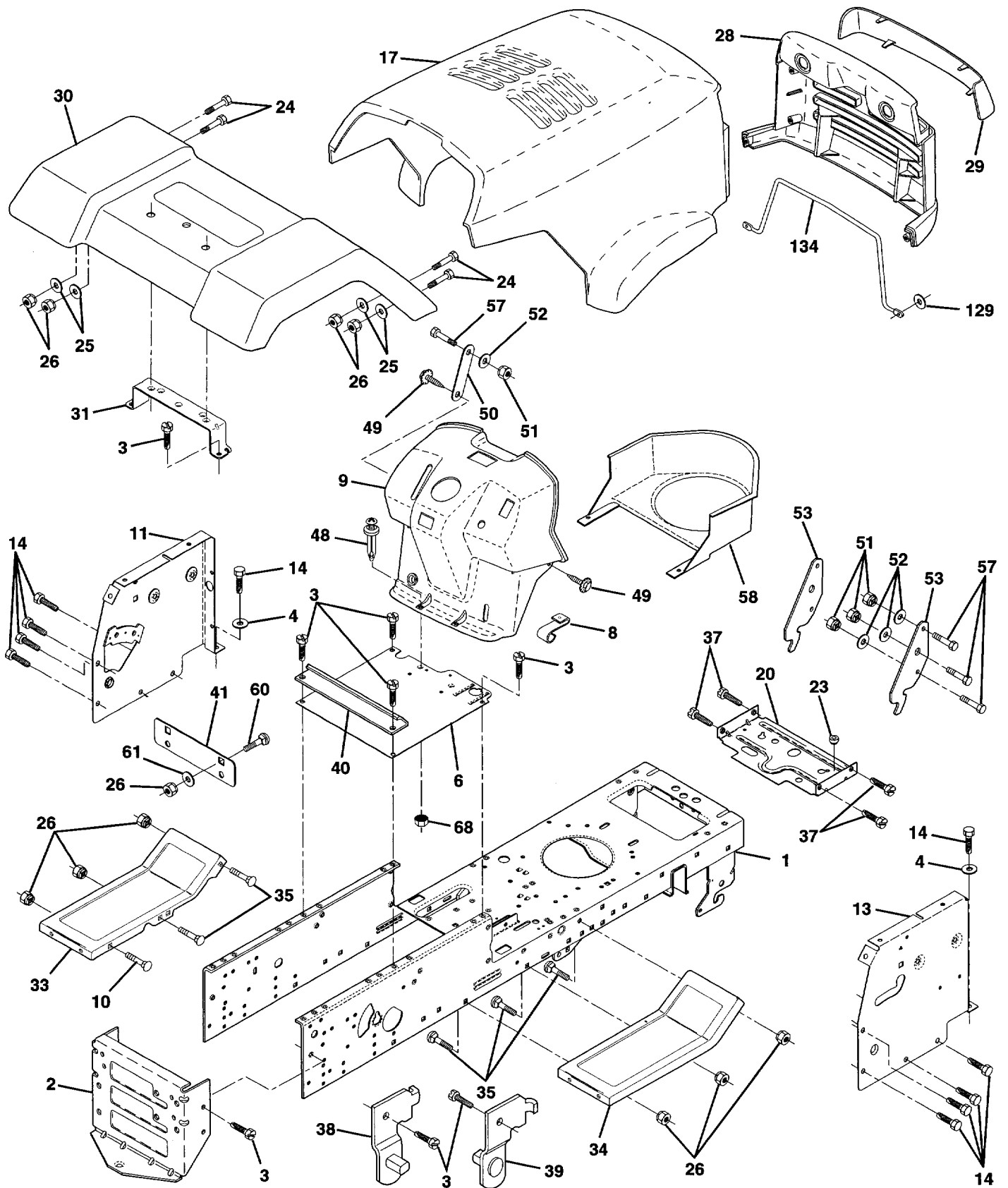
ELECTRICAL

KEY NO.	PART NO.	DESCRIPTION
1	532 14 61-39	Battery 12 Volt 25 AMP
2	874 76 04-12	Bolt Hex Hd 1/4-20unc X 3/4
3	819 09 10-16	Washer 9/32 X 5/8 X 16 Ga.
4	810 04 04-00	Washer Lock Hvy Helical 1/4
6	873 22 04-00	Nut Fin Hex 1/4-20 Unc
7	532 10 92-38	Tube Plastic 12"
8	532 14 49-40	Case Battery w/2 Holes
9	532 10 95-96	Clamp Hose Olive
15	532 14 76-88	Fastner Snap-In
19	810 09 04-00	Washer Lock 1/4
20	873 35 04-00	Nut Jam Hex 1/4-20 Unc
21	532 13 68-50	Harness Asm LightW/4152j
22	532 00 41-52	Bulb Light #1156
24	532 12 47-80	Cable Battery 6 Ga 11 " red
25	532 14 61-47	Cable Battery 6 Ga w/16 wire red
26	532 10 88-24	Fuse 30 AMP Auto Green
28	532 12 47-73	Cable Ground 6 Ga 12" black
29	532 12 13-05	Switch Plunger Nc Gray
30	532 14 03-01	Switch Ign 4 pos w/lights
31	532 12 42-11	Nut Ignition
32	532 14 12-26	Cover Sw Ignition
33	532 12 21-47	Key Ign Modledeed Generic
35	532 10 82-36	Bracket Switch Clutch
36	817 02 10-08	Screw Tap Hex #10-24unc X 1/2
38	532 14 03-36	Bracket, Switch, Interlock
39	532 10 95-53	Switch Intlk Clutch Red 4 Term
40	532 15 12-12	Harness ign LT P/L Mech Hm
41	871 11 04-08	Bolt Blk Fin Hex 1/4 - 20 x 1/2
42	532 13 15-63	Cover Terminal Red
43	532 14 56-73	Solenoid
44	873 64 04-00	Nut Keps Blk Hex 1/4-20 Unc
45	532 12 14-33	Ammeter Rectangular
52	532 14 19-40	Protection Wire Loop
70	532 14 11-64	Harness, Eng.

NOTE: All component dimensions given in U.S. inches.
1 inch = 25.4 mm.

REPAIR PARTS

TRACTOR -- MODEL NO. YT150 (HEYT150A) PRODUCT NO. 954 82 00-31
CHASSIS AND ENCLOSURES



REPAIR PARTS

TRACTOR - - MODEL NO. YT150 (HEYT150A) PRODUCT NO. 954 82 00-31

CHASSIS AND ENCLOSURES

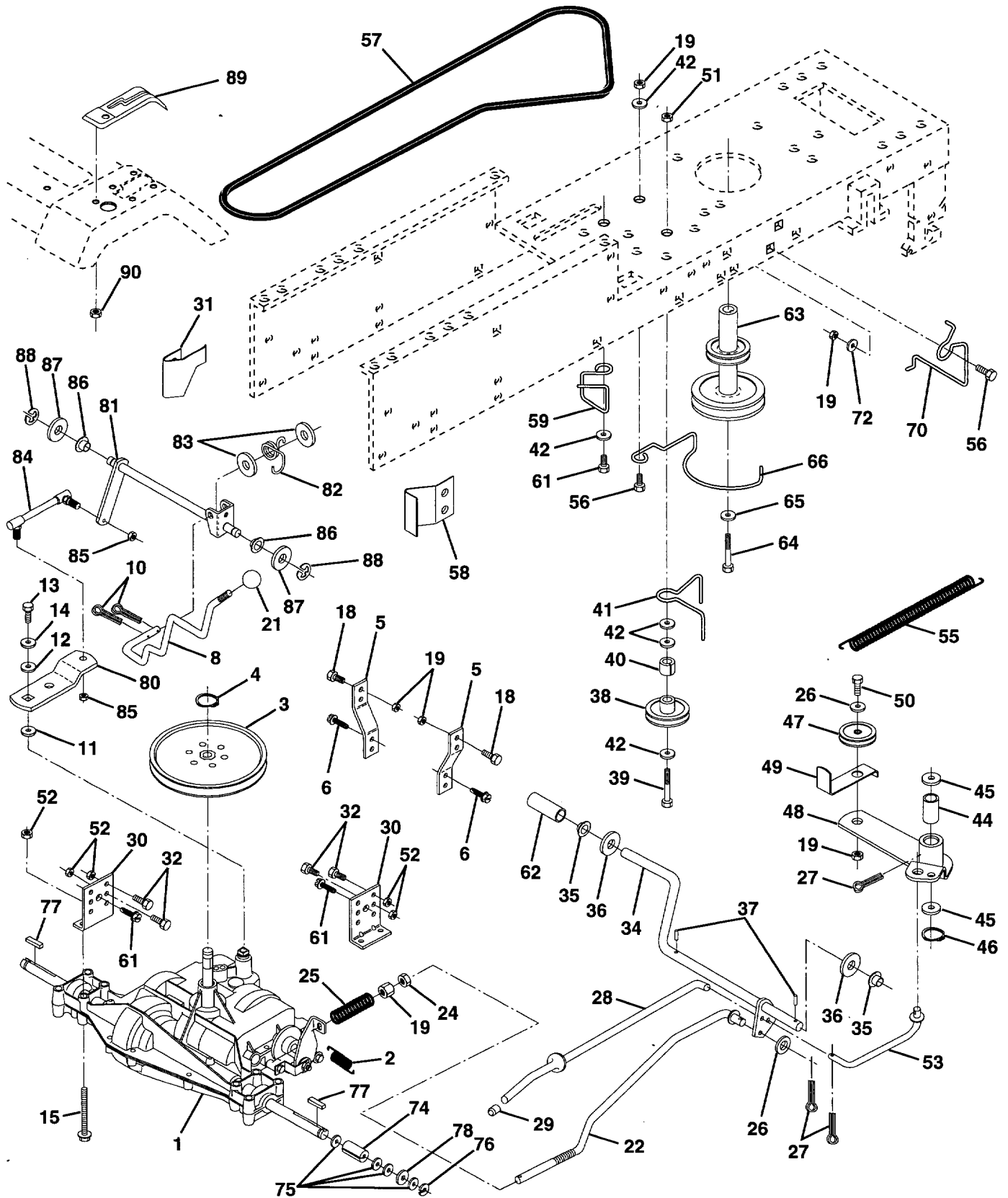
KEY NO.	PART NO.	DESCRIPTION
1	532 14 55-01	Chassis Weldment 11 ga
2	532 14 03-56	Drawbar, Stretch
3	817 49 06-12	Screw Thdrol 3/8-16x 3/4 Ty-tt
4	819 13 12-16	Washer 13/32 x 3/4 x 16 Ga.
6	532 14 52-06	Saddle LT Fender Shift
8	532 12 64-71	Clip, Insulator .406 Mtg Hole
9	532 14 72-16	Dash
10	872 14 06-08	Bolt Carriage 3/8-16 x 1
11	532 14 69-64	Panel Pnt Dash Lh
13	532 14 69-59	Panel Dash Rh
14	817 49 06-08	Screw Thdrol 3/8-16x1/2 Ty-tt
17	532 14 97-75	Hood Paint Steel Private Label
20	532 14 52-10	Plate Mtg Battery Fuel Tank 95
23	532 12 40-28	Bushing
24	874 78 06-16	Bolt Fin Hex 3/8-16unc X 1 Gr. 5
25	819 13 13-12	Washer 13/32 X 13/16 X 12 Ga
26	873 80 06-00	Nut Lock Hex W/Ins 3/8-16 Unc
28	532 14 97-76	Grille Private Label
29	532 14 97-77	Lens Grille Private Label
30	532 14 30-50	Fender Pnt
31	532 13 99-76	Bracket Pnt Support Fender
33	532 14 72-03	Footrest Pnt Lh
34	532 14 72-02	Footrest Pnt Rh
35	872 11 06-06	Bolt Rdhd Sht Sqnk 3/8-16 X314
37	817 49 05-08	Screw Thdrol 5/16-18 X1/2
38	532 13 98-86	Bracket, Asm. Pivot, L.H., Mower Rear
39	532 13 98-87	Bracket, Asm. Pivot, R.H., Mower Rear
40	532 13 99-77	Spacer Fender Lt
41	532 13 99-78	Plate Extension Fender Lt
48	532 13 80-96	Rivet Push Plate D Plastic Blk
49	817 49 04-12	Screw Hexwsh. Thdrol 1/4-20 x 3/4
50	532 14 27-79	Brace
51	873 80 04-00	Nut Lock Hex W/Ins 1/4-20
52	819 09 14-16	Washer 9/32 x 7/8 x 16 Ga.
53	532 15 00-67	Bracket Grille L.H.
57	874 78 04-12	Bolt Hex Hd 1/4-20 UNC x 3/4
58	532 15 01-27	Air Duct P/L Engine
60	872 14 06-06	Bolt Carriage 3/8-16 x 3/4
61	819 17 14-16	Washer 17/32 x 7/8 x 16 Ga.
68	873 51 04-00	Nut, Keps Hex 1/4-20 UNC
129	819 09 10-16	Washer 9/32 x 5/8 x 16
134	532 15 01-32	Rod, Support Hood
--	532 00 54-79	Plug Button Blk .359 Dia Choke
--	532 13 40-14	Plug Dome

NOTE: All component dimensions given in U.S. inches.
1 inch = 25.4 mm

REPAIR PARTS

TRACTOR -- MODEL NO. YT150 (HEYT150A) PRODUCT NO. 954 82 00-31

DRIVE



REPAIR PARTS

TRACTOR - - MODEL NO. YT150 (HEYT150A) PRODUCT NO. 954 82 00-31 DRIVE

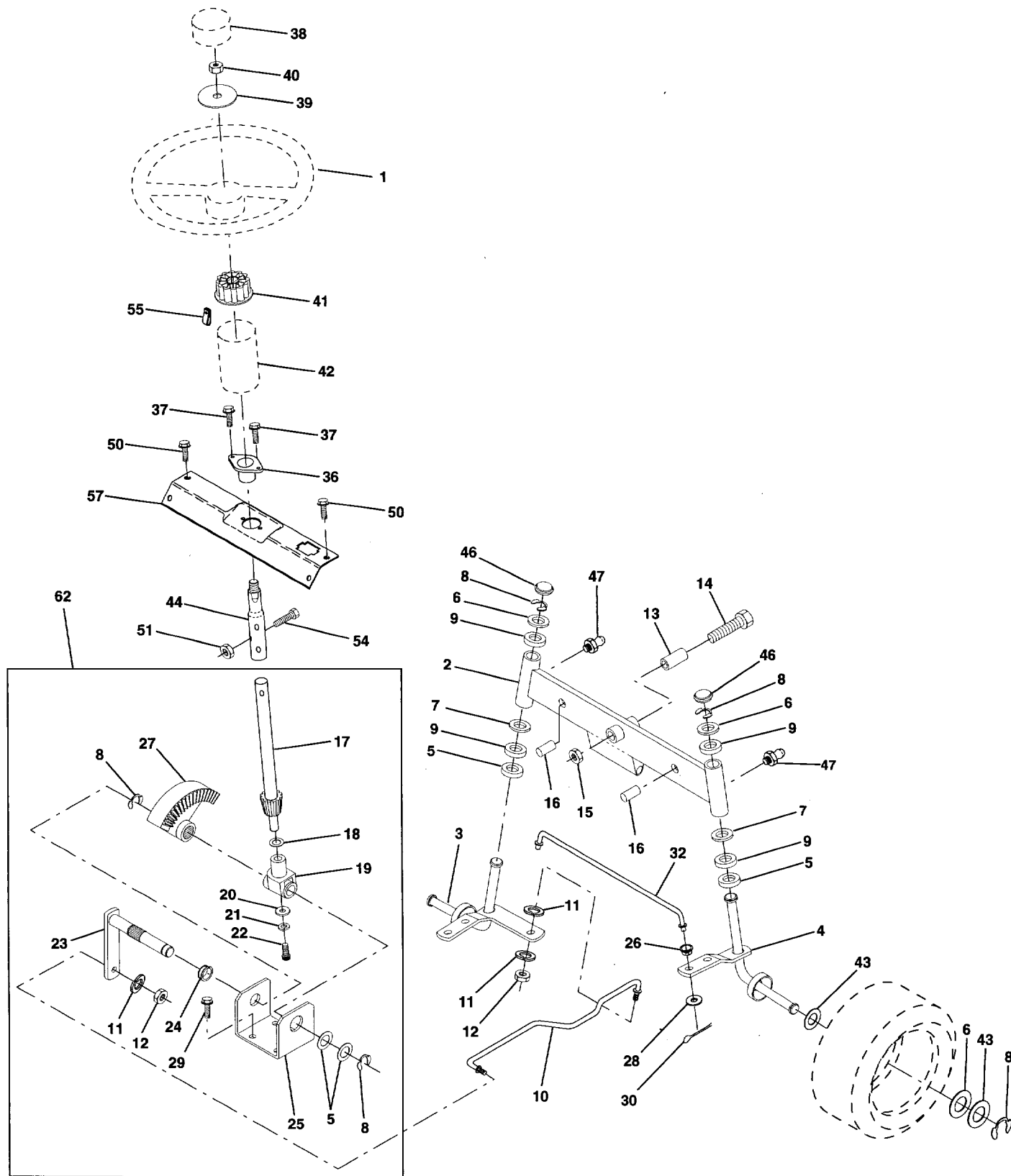
KEY NO.	PART NO.	DESCRIPTION	KEY NO.	PART NO.	DESCRIPTION
1	532 14 56-05	Transaxle 6sp Dana 4360-96	47	532 12 77-83	Pulley Idler V Groove Plastic
2	532 14 66-82	Spring Return Brake T/a Zinc	48	532 12 37-89	Bellcrank Asm Clutch
3	532 12 36-66	Pulley Transaxle 18"tires	49	532 12 32-05	Retainer Belt Style Spring
4	812 00 00-28	Ring Retainer # 5100-62	50	874 76 06-24	Bolt Hex Hd 3/8-16unc X 1-1/2
5	532 12 15-20	Strap Torque 30 Degrees	51	873 68 06-00	Nut Crownlock 3/8-16 Unc
6	817 49 05-12	Screw Thdrol 5/16-18 X 3/4 TYT	52	873 68 05-00	Nut Crownlock 5/16-18 Unc
8	532 14 10-03	Rod Shifter	53	532 10 57-10	Link Clutch 7 66
10	876 02 04-16	Pin Cotter 1/8 X 1 Cad	55	532 10 57-09	Spring Return Clutch 6 75
11	532 10 57-01	Washer Plate Shf 388 Sq Hole	56	874 76 06-20	Bolt Fin Hx 3/8-16 X 1/4
12	819 15 12-16	Washer 15/32 X 3/4 X 16 Ga	57	532 13 08-01	V-Belt Ground Drive 95 25 42"
13	874 55 04-12	Bolt 1/4-28 Unf Gr 8 W/Patch	58	532 12 72-74	Keeper Belt RH LT Pnt/zinc 16g
14	810 04 04-00	Washer Lock Hvy Helical 1/4	59	532 14 03-12	Keeper Belt Span Ctr
15	874 49 05-44	Bolt Fin Hex 5/16-18uncx 2 3/4	61	817 49 06-12	Screw Thdrol 3/8-16x314 Ty-tt
18	874 78 06-16	Bolt Fin Hex3/8-16unc X 1 Gr. 5	62	532 12 35-33	Cover Pedal
19	873 80 06-00	Nut Lock 3/8-16 Unc	63	532 14 01-86	Engine Pulley LT/YT
21	532 12 12-74	Knob Duckhead1/2-13 Plstc Thds Blk	64	871 17 07-64	Bolt Hex 7/16-20 x 4
22	532 13 08-04	Rod Brake Blk Zinc 26 840	65	810 04 07-00	Washer Lock Hvy Hlcl Spr 7/16
24	873 35 06-00	Nut Hex Jam 3/8-16 Unc	66	532 12 99-21	Keeper Belt Engine LH LT
25	532 10 68-88	Spring Rod Brake 2 00 Zinc	70	532 13 46-83	Guide Belt Mower Drive RH
26	819 13 13-16	Washer 13/32 X 13/16 X 16 Ga	72	819 13 20-12	Washer 13/32 X 1-1/4 X 12 Ga
27	876 02 04-12	Pin Cotter 1/8 X 3/4 Cad	74	532 10 95-02	Spacer Split
28	532 14 52-04	Rod Brake Parking LT/YT	75	532 12 17-49	Washer 25/32 X 1 1/4 X 16 Ga
29	532 07 16-73	Cap Brake Parking Black	76	812 00 00-01	E-ring #5133-75
30	532 13 08-07	Bracket Mtg Transaxle	77	532 12 35-83	Key Square 2 0 X 1845/1865
31	532 12 72-75	Keeper Belt LH LT 14 Ga	78	532 12 17-48	Washer 25/32 X 1 -5/8 X 16 Ga
32	874 76 05-12	Bolt Hex Hd 5/16-18unc X 3/4	80	532 13 14-87	Arm Shift Transaxle
34	532 14 90-01	Shaft Asm Pedal Foot 1 930	81	532 13 69-33	Shaft Asm Cross 20"t 42"deck
35	532 12 01-83	Bearing Nylon Blk 629 Id	82	532 12 37-82	Spring Torsion T/a
36	819 21 16-16	Washer21/32X1 X16Ga	83	819 17 12-16	Washer 17/32 X 3/4 X 16 Ga
37	532 12 49-63	Pin Roll 3/16 X 1"	84	532 13 21-83	Rod Shift Adj Tie
38	532 12 36-74	Pulley Idler Flat	85	532 15 03-60	Nut Nylock 1/4 - 28
39	874 76 06-44	Bolt Fin Hex 3/8-16unc X 2-3/4	86	532 07 12-08	Bushing Rod Strg 629/632 Id
40	532 12 49-65	Spacer Split 395 X 59 Bzp	87	819 21 20-16	Washer 21/32 X 1 -1/4 X 16 Ga
41	532 10 90-70	Keeper Belt Retainer	88	812 00 00-08	Ring Klip #5304-62
42	819 13 13-12	Washer 13/32 X 13/16 X 12 Ga	89	532 13 99-64	Console Shift 6sp LT
44	532 10 57-06	Bearing Nyl 503 X 628 X 1 25	90	532 12 43-46	Nut Self-thd Wsh-hd 1/4 Zinc
45	532 11 08-12	Washer Hardened			
46	812 00 00-39	Ring Klip#t5304-50			

NOTE: All component dimensions given in U.S. inches
1 inch =25.4 mm

REPAIR PARTS

TRACTOR -- MODEL NO. YT150 (HEYT150A) PRODUCT NO. 954 82 00-31

STEERING ASSEMBLY



REPAIR PARTS

TRACTOR - - MODEL NO. YT150 (HEYT150A) PRODUCT NO. 954 82 00-31 STEERING ASSEMBLY

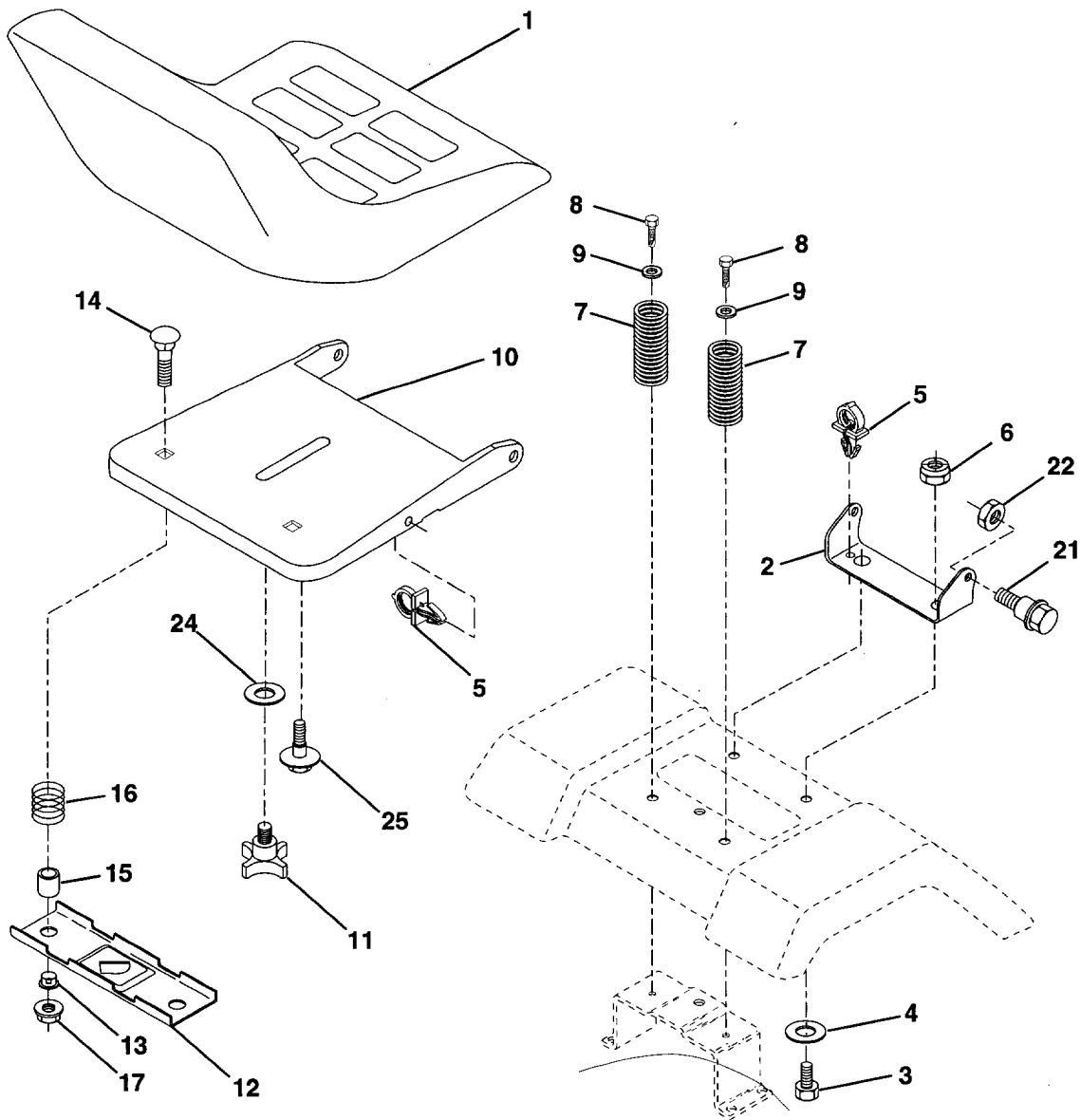
KEY NO.	PART NO.	DESCRIPTION
1	532 12 44-15	Wheel Steering Auto Blk
2	532 14 20-33	Axle Asm Fr LT W/gzks 38/42
3	532 13 52-27	Spindle Asm LH
4	532 13 52-28	Spindle Asm RH
5	532 12 49-31	Bearing Race Thrust Harden
6	532 12 17-48	Washer 25/32 X 1-5/8 X 16 Ga
7	819 27 20-16	Washer 27/32 X 1-1/4 X 16 Ga
8	812 00 00-29	Ring Klip #t5304-75
9	532 12 49-37	Bearing Col Strg Blk
10	532 13 04-68	Link Drag Sol Ball Jt 20 064
11	810 04 06-00	Washer Lock Hvy Hlcl Spr 3/8
12	873 61 06-00	Nut Fin Hex 3/8-24 Unf
13	532 11 04-38	Spacer Bearing Axle Front
14	874 01 10-56	Bolt Hex 5/8-11 Unc X 3-1/2
15	873 90 10-00	Nut Lock Flange 5/8-11 Unc
16	532 13 26-24	Pin Axle 5/8 X 1 55/1 54 Lg
17	532 14 01-76	Shaft Asm Strg Private Label
18	532 05 70-79	Washer Thrust 515x 750x 033
19	532 12 40-35	Support Shaft
20	532 12 66-84	Washer Shim 1/4 X 5/8 X 062
21	810 04 04-00	Washer Lock Hvy Helical 1/4
22	871 10 04-10	Screw Cap Socket
23	532 12 75-01	Shaft Asm Pittman
24	532 10 98-16	Nyliner Snap In
25	532 12 40-36	Bracket Steering
26	532 12 68-47	Bushing Link Drag
27	532 13 68-74	Gear Sector
28	819 13 14-16	Washer 13/32 x 7/8 x 16
29	817 49 06-12	Screw Thdrol 3/8-16 x 3/4 Ty-tt
30	876 02 04-12	Pin Cotter 1/8 x 3/4
32	532 13 04-65	Rod Tie
36	532 10 28-03	Bushing Strg
37	817 43 10-08	Screw Slftp #10-16 X 1/2 Ty-b
38	532 12 44-16	Insert Cap Strg Wh Au
39	819 13 38-08	Washer 13/32 X 2-3/8 X 8 Ga
40	532 12 47-01	Nut Lock Center 3/8-24unf
41	532 10 48-20	Adaptor Wheel Strg 640/ 635id
42	532 15 03-90	Boot Steering Shaft
43	532 12 17-49	Washer 25/32 X 1 1/4 X 16 Ga
44	532 14 66-90	Shaft Extention Steering
46	532 12 12-32	Cap Spindle Fr Top Blk
47	532 12 48-36	Fitting Grease
50	817 49 04-12	Screw Hex Wsh Thdrol 1 /4-20 x 3/4
51	873 80 05-00	Nut Lock Hex w/lns 5/16-18
54	874 78 05-20	Bolt Fin Hex 5/16-18 Unc x 1-1/4
55	532 14 02-85	Clip Tinnerman
57	532 14 01-72	Support Shaft Steering
62	532 14 96-86	Kit Steering Assembly

NOTE: All component dimensions given in U.S. inches.
1 inch = 25.4 mm.

REPAIR PARTS

TRACTOR - - MODEL NO. YT150 (HEYT150A) PRODUCT NO. 954 82 00-31

SEAT ASSEMBLY



KEY PART NO. NO.

DESCRIPTION

1	532 14 08-39	Seat V450 Blk/blk Std
2	532 14 05-51	Bracket Pivot Seat 8 720
3	874 76 06-16	Bolt Fin Hex 3/8-16unc X 1
4	819 13 16-10	Washer 13/32 X 1 X 10 Ga
5	532 14 50-06	Clip Push-In
6	873 80 06-00	Nut Lock 3/8-16 Unc
7	532 12 41-81	Spring Seat Cprsn 2 250 Blk Zi
8	817 49 06-16	Screw Thdrol 3/8-16 X 1 Ty-tt
9	819 13 16-14	Washer 13/32 X 1 X 14 Ga.
10	532 14 05-52	Pan Seat
11	532 12 00-68	Knob Seat 1/2-13 UNC Blk
12	532 12 12-46	Bracket Mounting Switch

KEY PART NO. NO.

DESCRIPTION

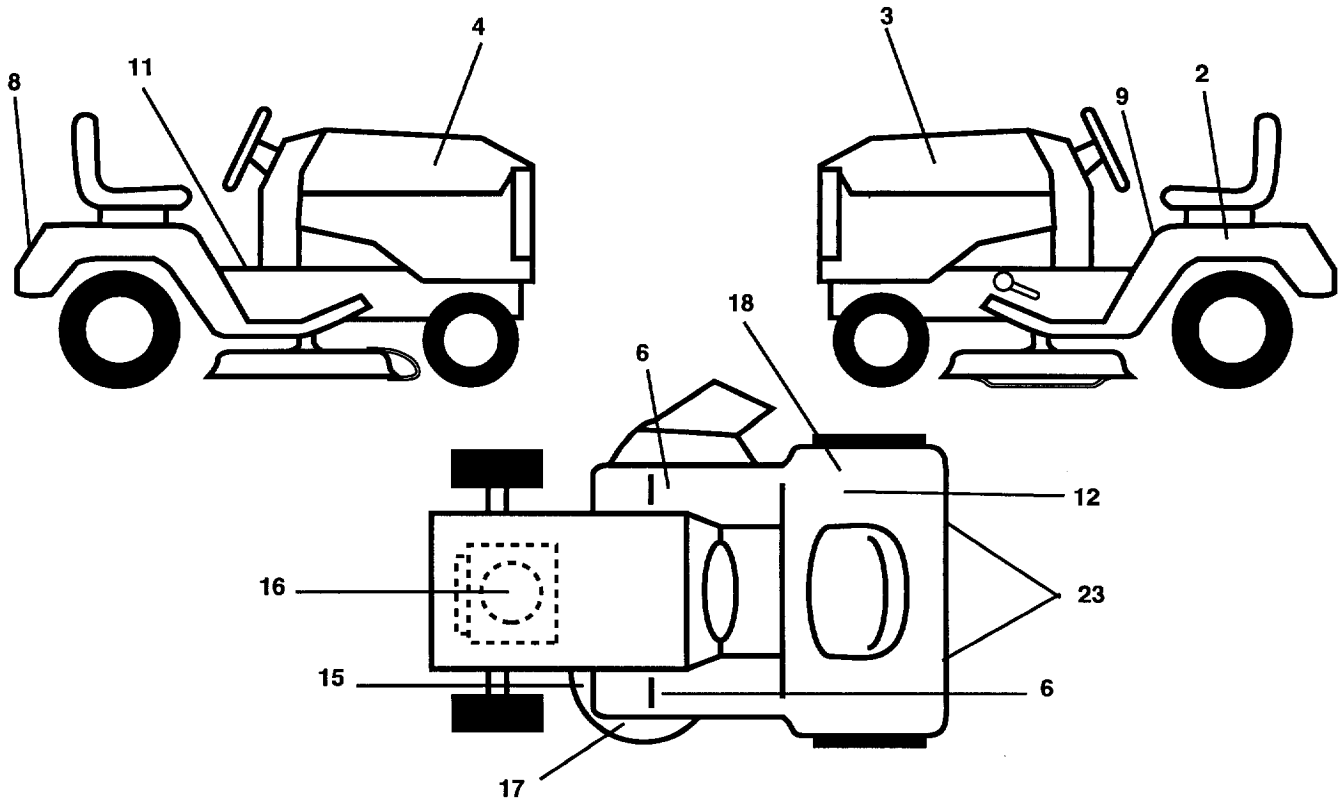
13	532 12 12-48	Bushing Snap Blk Nyl 50 Id
14	872 05 04-11	Bolt Rdhd Sht Nk 1/4-20x1-3/8
15	532 13 43-00	Spacer Split 28x 96 Yel Zinc
16	532 12 12-50	Spring Cprsn 1 27 Blk Pnt
17	532 12 39-76	Nut Lock 1/4 Lge Flg Gr 5 Zinc
21	532 13 98-88	Bolt Shoulder 5/16-18 Unc Blkz
22	873 80 05-00	Nut Hex Lock W/Ins 5/16-18
24	819 17 19-12	Washer 17/32 X 1 -3/16 X 12 Ga.
25	532 12 70-18	Bolt Shoulder 5/16- 18 X 62

NOTE: All component dimensions given in U.S. inches.
1 inch = 25.4 mm

REPAIR PARTS

TRACTOR - - MODEL NO. YT150 (HEYT150A) PRODUCT NO. 954 82 00-31

DECALS



KEY PART
NO. NO.

DESCRIPTION

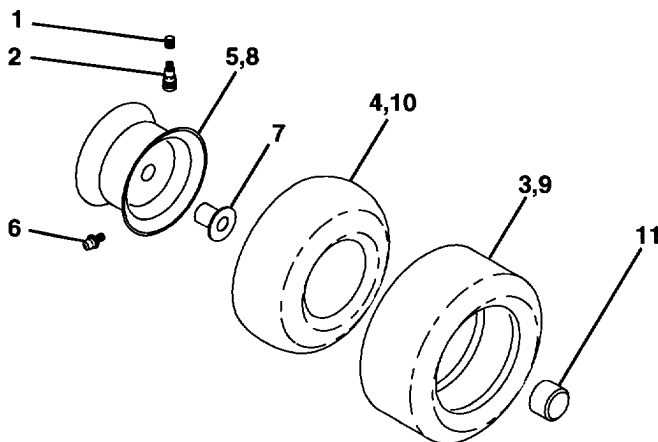
2	532 14 64 5-1	Decal Bat Dan/Poi P/L Symbols
3	532 15 15-49	Decal Hood LH
4	532 15 15-48	Decal Hood RH
6	532 14 52-46	Pad, Footrest Ribbed
8	532 15 06-17	Decal Fender Logo
9	532 14 54-98	Decal Caution Fender
11	532 14 08-37	Decal Sdl
12	532 12 56-90	Decal 100 DBA
15	532 13 68-32	Decal V-Belt Schematic
16	532 27 32-61	Decal Engine

KEY PART
NO. NO.

DESCRIPTION

17	532 14 54-94	Decal Cutfinger
18	532 14 54-37	Decal Euro Stand CE
23	532 10 62-02	Reflector Tail Light
--	532 13 83-11	Decal Handle Lft Height Adjust
--	532 15 29-18	Manual Operator's (Euro)
--	532 15 29-19	Manual Operator's (Scand)
Available accessories not included with tractor:		
--	LBD48	48" Snow Blade
--	LSB42	42" SnowThrower
--	LC05	331b. Wheel Wts. (Pair)
--	MK420	Mulch Kit
--	GWN42	Gauge Wheel
--	CE42	Grass Catcher for 42"

WHEELS & TIRES



KEY PART
NO. NO.

DESCRIPTION

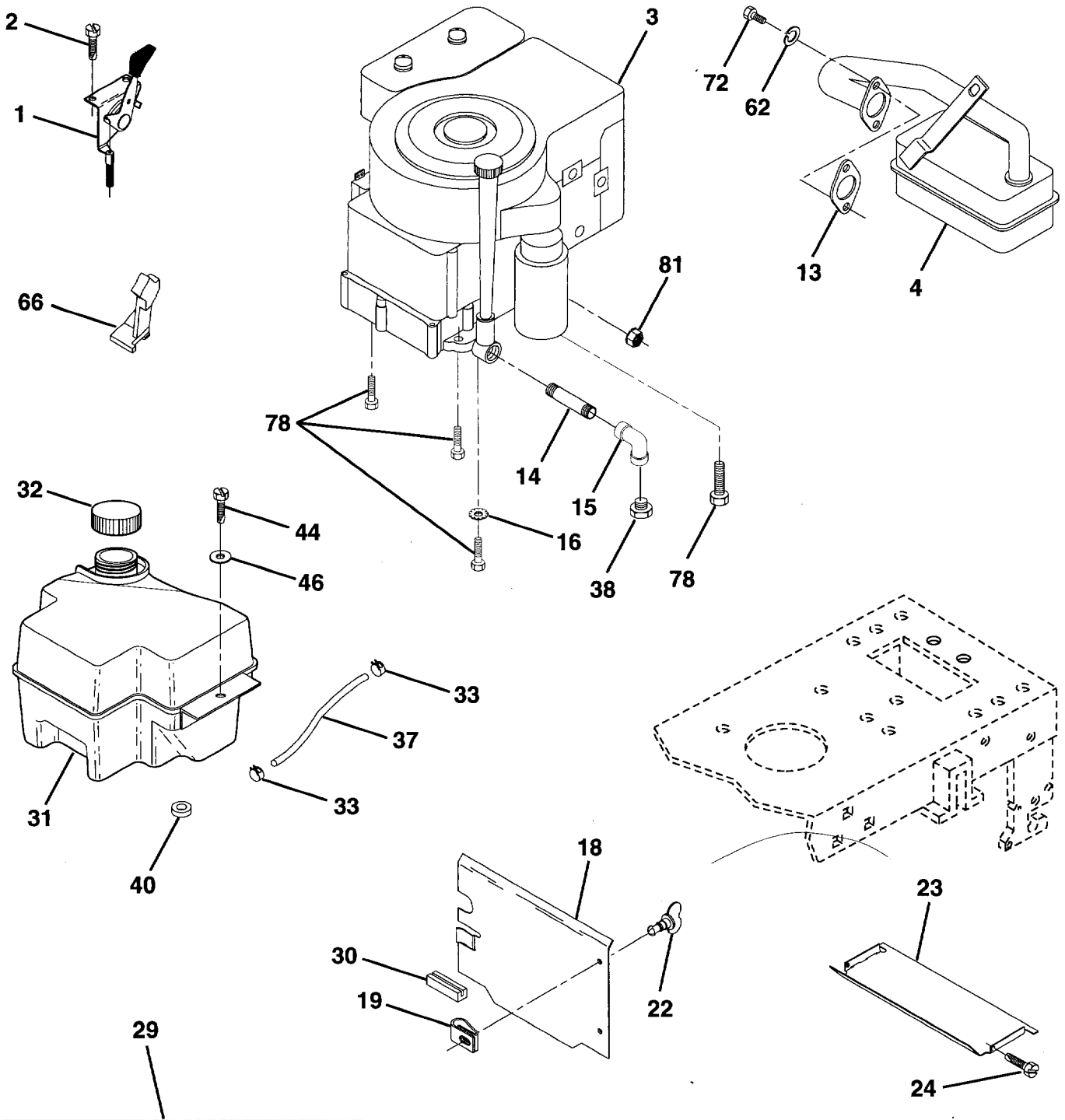
1	532 05 91-92	Cap Valve Tire
2	532 06 51-39	Stem Valve
3	532 10 62-22	Tire F Ts 15 X 60 - 6 Service
4	532 05 99-04	Tube Front (Service Item Only)
5	532 13 83-36	Rim Asm 6"front
6	532 12 49-57	Fitting Grease (Front Wheel Only)
7	532 12 49-59	Bearing Flange (Front Wheel Only)
8	532 13 83-37	Rim Asm 8"rear
9	532 12 20-82	Tire R Ts 20-10 x 8 C Service
10	532 12 49-26	Tube Rear (Service Item Only)
11	532 10 47-57	Cap Axle Blk 1 50 X 1 00
--	532 14 43-34	Sealant, Tire (10 oz. Tube)

NOTE: All component dimensions given in U.S. inches
1 inch = 25.4 mm

REPAIR PARTS

TRACTOR -- MODEL NO. YT150 (HEYT150A) PRODUCT NO. 954 82 00-31

ENGINE



OPTIONAL EQUIPMENT
Spark Arrester

REPAIR PARTS

TRACTOR - - MODEL NO. YT150 (HEYT150A) PRODUCT NO. 954 82 00-31 ENGINE

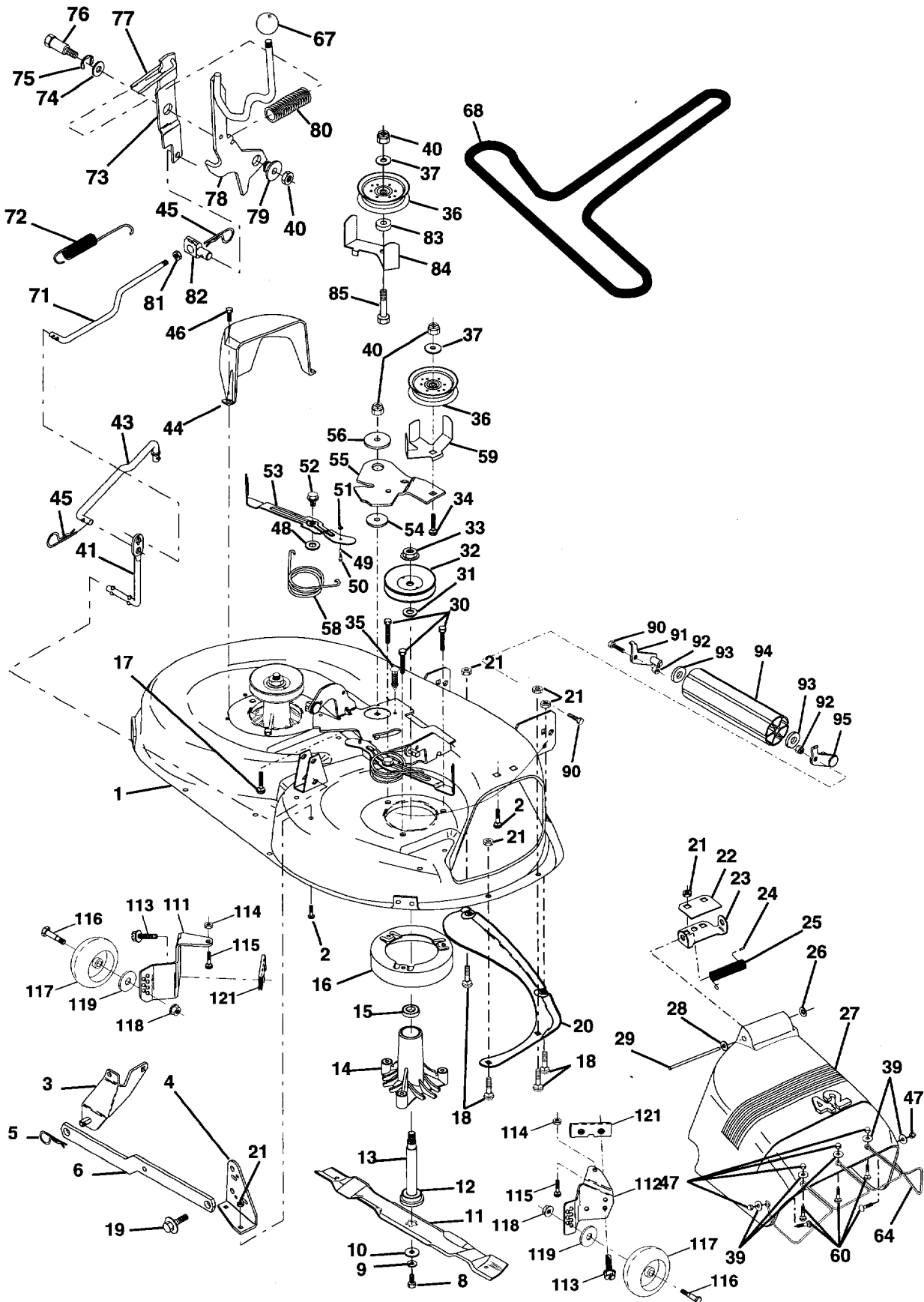
KEY NO.	PART NO.	DESCRIPTION
1	532 14 13-59	Control Th/ch
2	817 72 04-10	Screw Hex Thd Cut 1/4-20x5/8 T
3	-----	Engine B&S Model No. 28N707 0171-01
4	532 13 73-52	Muffler LT B&S 15 HP IC OHV
13	532 27 22-93	Gasket Eng 1 313 Id Tin Plated
14	813 28 03-24	Nipple Pipe 3/8 Npt X 3"
15	813 20 03-00	Elbow Std 90 Degree 3/8-18 Npt
16	811 05 06-00	Washer Lock Ext Tooth 3/8
18	532 13 67-18	Shield Heat Lt
19	532 10 58-39	Receptacle 1/4Turn Dacrotized
22	532 14 97-93	Stud 1/4 Turn
23	532 12 89-53	Shield Heat Browning LT/YT
24	817 02 10-08	Screw Tap Hex #10-24unc X 1/2
29	532 13 71-80	Kit Spark Arrestor (Flat Scrn)
30	532 12 70-57	Pinch Weld Hood Black 2.00
31	532 14 02-80	Tank Fuel Front 2 00
32	532 14 05-27	Cap Asm Fuel W/sym Vented
33	532 12 34-87	Clamp Hose Black
37	532 13 70-40	Line Fuel 20"
38	-----	Plug Oil Drain (Order From Engine Manufacturer)
40	532 12 40-28	Bushing Snap Nyl Blk Fuel Line
44	817 49 04-12	Screw Hexwsh Thdrol 1/4-20x3/4
46	819 09 14-16	Washer 9/32 X 7/8 X 16 Ga
62	810 04 05-00	Washer Lock Hvy Hlcl Spr 5/16
66	532 12 79-51	Stop Throttle
72	871 07 05-12	Screw Hexhd Cap 5/16-18x 3/4
78	817 49 06-20	Screw Thdrol 3/8-16x1-1/4 TYTT
81	532 12 88-61	Nut Flange 1/4-20 Starter Nut

NOTE: All component dimensions given in U.S. inches
1 inch = 25.4 mm

REPAIR PARTS

TRACTOR -- MODEL NO. YT150 (HEYT150A) PRODUCT NO. 954 82 00-31

MOWER DECK



REPAIR PARTS

TRACTOR - - MODEL NO. YT150 (HEYT150A) PRODUCT NO. 954 82 00-31

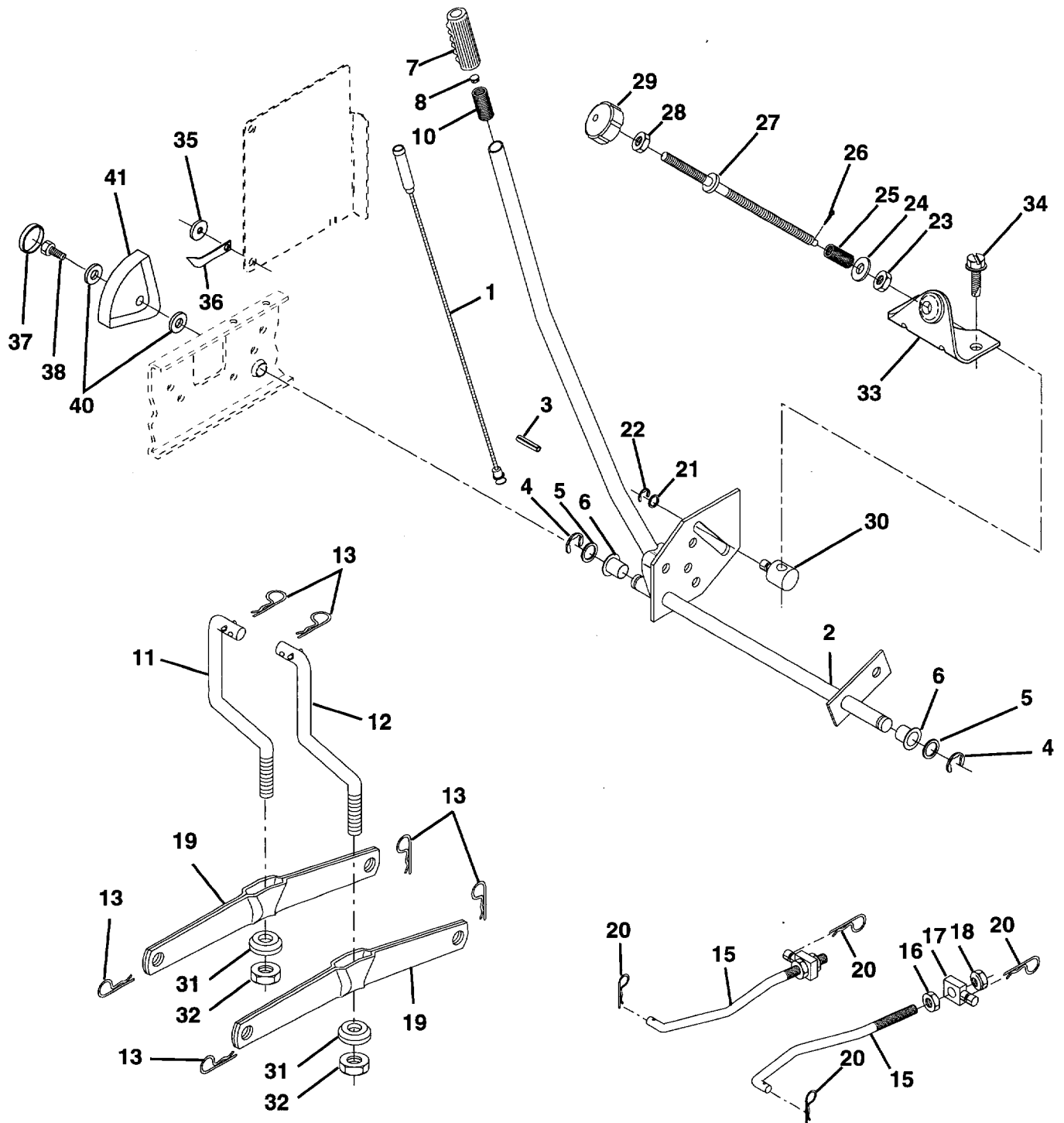
MOWER DECK

KEY NO.	PART NO.	DESCRIPTION	KEY NO.	PART NO.	DESCRIPTION
1	532 14 43-93	Deck Asm MW R42'iweldment	52	532 13 98-88	Bolt Shoulder 5/16-18 Unc Blkz
2	872 14 05-06	Bolt Rdhd Sqnk 5/16-18unc X3/4	53	532 13 18-45	Arm Asm Pad Brake
3	532 13 80-17	Bracket Asm Fr Sway Bar 38/42	54	532 13 39-43	Washer Hardened
4	532 13 84-40	Bracket Asm Deck 42"sway Bar	55	532 14 00-84	Arm Idler 42"mower LT/YT
5	532 12 46-70	Retainer Spring	56	532 12 20-52	Spacer Retainer Pm Mower
6	532 13 08-32	Arm Suspension Rear	58	532 14 00-86	Spring Torsion Brakes
8	532 85 08-57	Bolt 3/8 - 24 X 1.25 Gr 8	59	532 14 10-43	Guard TUV Idler
9	810 03 06-00	Washer Lock Hvy 3/8	60	871 16 10-10	Screw Truss Hd Phi 10-24 x 5/8
10	532 14 02-96	Washer Hard Blade Mower Vented	64	532 13 93-28	Guard Deflector
11	532 13 84-98	Blade Mower	67	532 10 69-33	Knob Rd 1/2-13 Plstc Thds Blk
12	532 12 98-95	Bearing Ball #6024 (Mandrel)	68	532 14 42-00	V-Belt Mower 42"
13	532 13 76-45	Shaft Asm W/lower Bearing	71	532 14 24-27	Rod Clutch Primary 38/42
14	532 12 87-74	Housing Mandrel Vented	72	532 13 18-70	Spring Return
15	532 11 04-85	Bearing Ball Mandrel	73	532 12 78-47	Arm Clutch Secondary
16	532 14 03-29	Stripper Mower Vented	74	532 12 17-48	Washer 25/32 X 1-5/8 X 16 Ga
17	872 11 06-10	Bolt Rdhd Sqnk 3/8-16 X 1-1/4	75	812 00 00-29	Ring Klip #t5304-75
18	872 14 05-05	Bolt Rdhd Sqnk 5/16-18 X 5/8	76	532 12 89-03	Bolt Shoulder 3/8-16 Unc 1 44
19	532 13 28-27	Bolt Shouider	77	532 12 78-45	Keeper Spring 4 000
20	532 13 68-88	Baffle Vortex 42	78	532 14 01-79	Arm Asm Clutch Primary
21	873 68 05-00	Nut Crownlock 5/16-18 UNC	79	532 12 74-98	Bushing 747 Od X 794 Lg Brass
22	532 13 47-53	Stiffener Bracket 42"deck	80	532 12 87-59	Spring Clutch Mower 2 750 Zinc
23	532 13 12-67	Bracket Deflector Mower 42"	81	873 35 06-00	Nut Hex Jam 3/8-16
24	532 10 53-04	Cap Sleeve 80x 112 Blk Mower	82	532 14 20-28	Trunnion Adj 94
25	532 12 37-13	Spring Torsion Deflector 2 52	83	532 12 09-58	Washer Sintered
26	532 11 04-52	Nut Push Phos & Oil	84	532 14 43-94	Keeper Belt Idler Fixed
27	532 13 94-50	Shield Deflector Mower 42" Blk	85	872 14 06-18	Bolt Carriage 3/8-16 x 2-1/4
28	819 11 10-16	Washer 11/32 X 5/8 X 16 Ga	90	874 76 06-16	Bolt Fin Hex 3/8-16 UNC x 1
29	532 13 14-91	Rod Hinge 42"6 75 Wlg	91	532 13 22-74	Bracket Asm Noseroller LH
30	532 13 87-76	Screw Thdrol Hex Head Zinc Mwr	92	873 80 06-00	Nut Lock Hex W/Ins 3/8-16 Unc
31	532 12 99-63	Washer Spacer Mower Vented	93	819 17 14-16	Washer 17/32 x 7/8 x 16 Ga.
32	532 12 98-61	Pulley Mandrel 42"	94	532 13 22-64	Roller Nose 38 & 42
33	532 13 72-66	Nut 9/16 Toplock Flng Oil Dip	95	532 13 22-73	Bracket Asm Noseroller RH
34	872 11 06-14	Bolt Rdhd 3/8-16uncx1-3/4 Gr5	111	532 14 03-53	Bracket Wheel Gauge LH 42" Deck
35	532 13 38-35	Fastner Christmas Tree	112	532 13 22-62	Bracket Gauge Wheel RH 42" Deck
36	532 13 14-94	Pulley Idler Flat 3 060	113	817 49 05-12	Screw Thdrol 5/16-18 x 3/4
37	819 13 13-16	Washer 13/32 X 13/16 X 16	114	873 51 05-00	Nut Keps 5/16-18 UNC
39	819 07 07-18	Washer 7/32 x 7/16 x 18	115	872 11 05-04	Bolt Carriage 5/16-UNC x 1/2
40	873 68 06-00	Nut Crownlock 3/8-16 UNC	116	532 13 76-44	Bolt Shoulder
41	532 13 35-51	Rod Pivot W/nibs	117	532 13 39-57	Wheel Gauge Blk
43	532 14 00-83	Rod Clutch Secondary W/nibs	118	873 93 06-00	Nut Centerlock 3/8-16 UNC
44	532 14 00-88	Guard Mandrel LH Black	119	819 12 14-14	Washer 3/8 x7/8 x 14 Ga.
45	532 12 47-88	Spring Retainer 1" Zinc/cad	121	532 14 37-23	Bracket Extruded Gauge Wheel
46	532 13 77-29	Screw Hex Thd Cut 1/4-20x5/8 T	--	532 14 47-83	Deck Serv 42" HL
47	532 06 08-67	Nut Acorn Hex #10-24	--	532 13 07-94	Mandrel Asm Service (Includes Key Nos. 8-10, 12-15, 31 and 33)
48	532 13 39-44	Washer Hardened Smaller			
49	532 13 39-40	Roller Asm Cam Follower 42"dec			
50	532 13 13-40	Bolt Shldr 10-24 Zinc Gr 5 42"			
51	532 06 91-80	Nut Lock #10-24 Unc			

NOTE: All component dimensions given in U.S. inches
1 inch =25.4 mm

REPAIR PARTS

TRACTOR -- MODEL NO. YT150 (HEYT150A) PRODUCT NO. 954 82 00-31
MOWER LIFT



REPAIR PARTS

TRACTOR - - MODEL NO. YT150 (HEYT150A) PRODUCT NO. 954 82 00-31

MOWER LIFT

KEY NO.	PART NO.	DESCRIPTION
1	532 13 69-73	Wire Asm Inner W/plunger 17 32
2	532 15 05-88	Shaft Asm Lift LH Inf Hgt P/L
3	532 13 82-84	Pin Groove 1 500 Zinc
4	812 00 00-02	E Ring #5133-62
5	819 21 16-21	Washer 21/32 X 1 X 21 Ga
6	532 12 01-83	Bearing Nylon Blk 629 Id
7	532 12 56-13	Grip Handle
8	532 12 45-26	Button Plunger Black
10	532 12 25-12	Spring Cprsn 3 750 Oiled
11	532 13 98-65	Link Lift LH
12	532 13 98-66	Link Lift RH
13	532 12 46-70	Retainer Spring
15	532 12 72-18	Link Front
16	873 35 08-00	Nut Jam Hex 1/2-13 Unc
17	532 13 01-71	Trunnion Blk Zinc
18	873 80 08-00	Nut Lock W/wsh 1/2-13unc
19	532 13 98-68	Arm Suspension Rear
20	532 12 46-60	Retainer Spring
21	819 15 12-16	Washer 15/32 X 3/4 X 16 Ga
22	812 00 00-37	Ring Klip #t5304-37
23	532 11 08-07	Nut Special
24	819 13 10-16	Washer 13/32 X 5/8 X 16 Ga
25	532 12 48-74	Spring 2-1/8"
26	876 02 03-08	Pin Cotter 3/32 X 1/2
27	532 12 69-71	Rod Adj Lift Zinc 7 49 Wrk Lg
28	873 35 06-00	Nut Hex Jam 3/8-16 Unc
29	532 13 80-57	Knob Inf 3/8-16 Unc Blk W/sym
30	532 11 08-10	Trunnion Dp Stop Dbl Thds PLT
31	532 14 03-02	Bearing pvt. Lift Spherical
32	873 54 06-00	Nut Crownlock 3/8-24
33	532 14 01-68	Bracket Stop Inf Hgt
34	817 49 06-08	Screw Thdtol 3/8-16 x 1/2 Ty-tt
35	532 12 05-29	Washer Nylon .44x .75 x032
36	532 13 83-46	Pointer pnt Height Ind.
37	532 12 39-35	Plug hole Blk 1.485/1.515 Dia
38	817 49 05-12	Screw Thdrol 5/16-18 x 3/4 Tyt
40	819 11 24-10	Washer 11/32 x 1-1/2 10 Ga
41	532 12 39-34	Scale Ind. Height Black

NOTE: All component dimensions given in U.S. inches
1 inch = 25.4 mm