

**ILLUSTRATED PARTS BREAKDOWN**

**HUSQVARNA**

**12 HP LAWN RIDER**

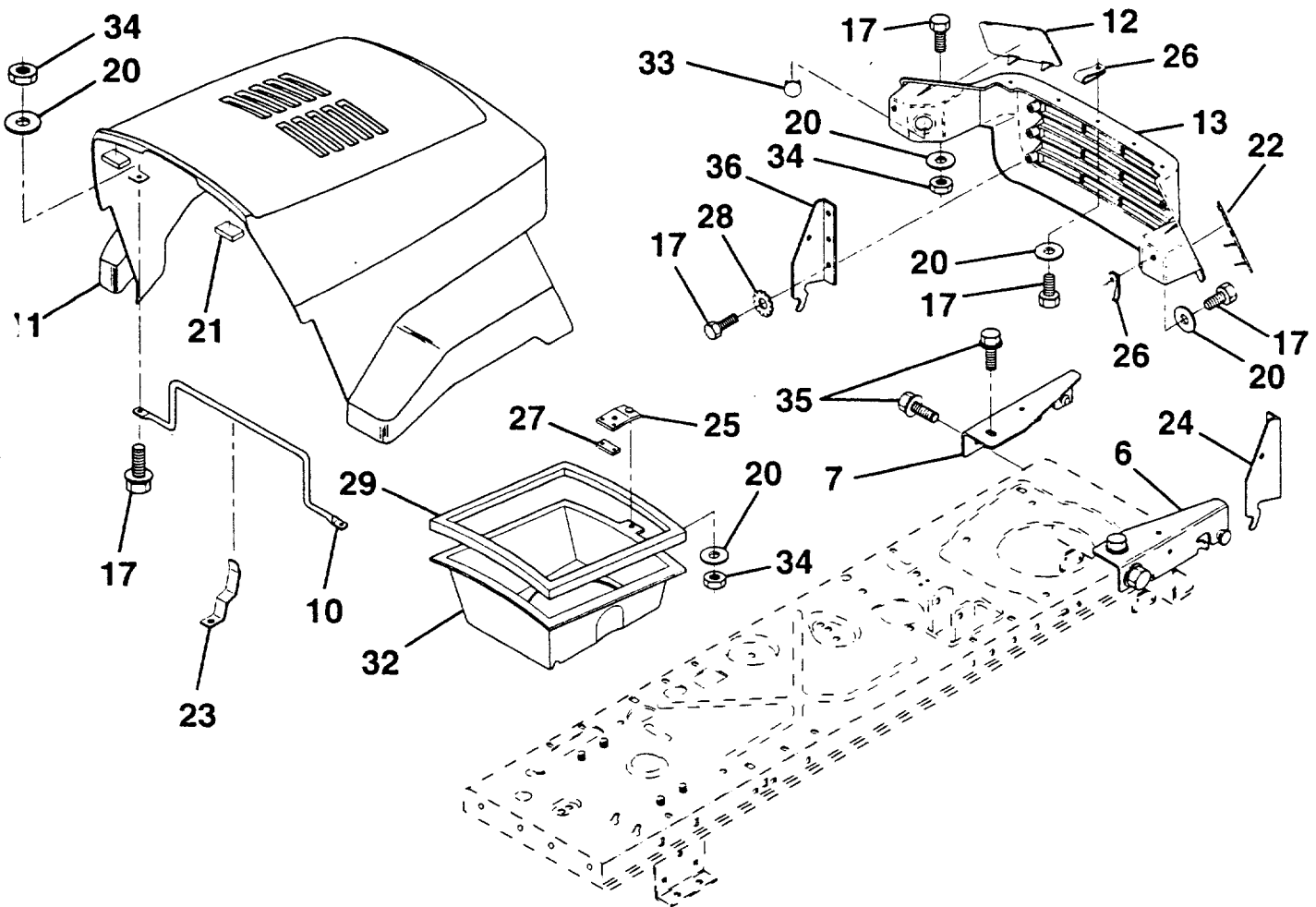
**MODEL NO. LR112 (HE1236B)**

**954 82 00-61**

# REPAIR PARTS

TRACTOR - - MODEL NO. LR112 (HE1236B), PRODUCT NO. 954 82 00-61

## HOOD



KEY NO.	PART NO.	DESCRIPTION
6	532 14 00-51	Bracket Asm., Pivot Hood RH
7	532 14 00-50	Bracket Asm., Pivot Hood LH
10	532 13 08-50	Brace, Hood
11	532 14 01-42	Hood
12	532 13 09-86	Lens, LH
13	532 13 09-84	Grille
17	874 78 04-10	Bolt, Fin Hex 1/4-20 x 5/8
20	819 09 10-16	Washer, Flat 1/4
21	532 12 69-38	Bumper, Hood
22	532 13 09-85	Lens, RH
23	532 13 99-69	Latch, Hood
24	532 14 28-73	Bracket, Pivot Hood RH

KEY NO.	PART NO.	DESCRIPTION
25	532 13 10-37	Clip, Asm. Duct Air
26	532 05 29-21	Clip, Tinnerman
27	532 13 10-28	Clip, Tinnerman
28	811 05 04-00	Washer, Lock Ext. Tooth
29	532 12 05-37	Strip, Foam
32	532 12 38-40	Duct, Air Hood
33	532 13 13-19	Plug, Socket Light
34	873 68 04-00	Nut, Fin Hex 1/4-20
35	817 49 05-12	Screw, Thdrol 5/16-28 x 3/4
36	532 12 84-45	Bracket, Pivot Hood LH

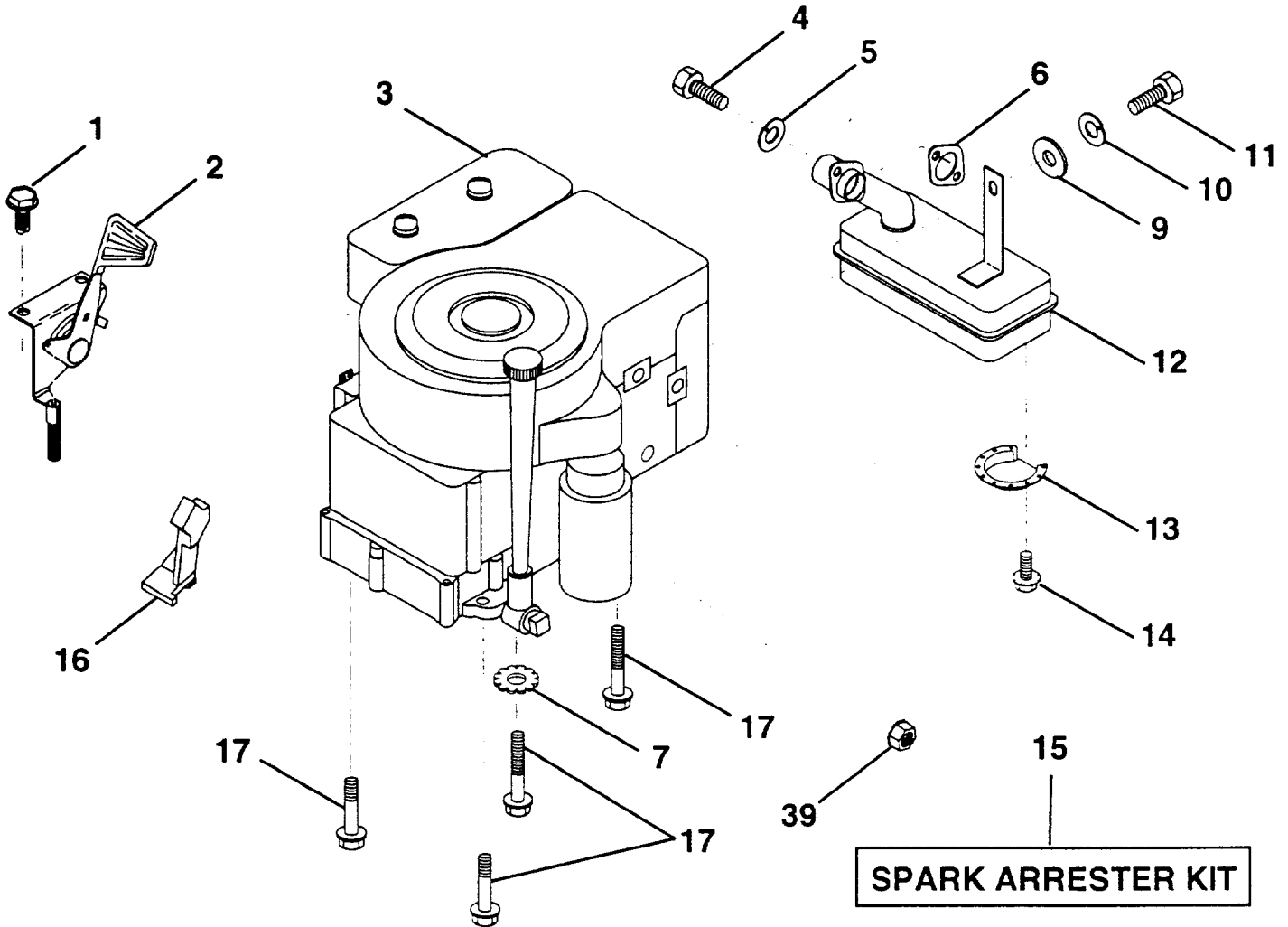
**NOTE:** All component dimensions given in U.S. inches  
1 inch = 25.4 mm

HARDWARE SHOWN LARGER FOR EASIER IDENTIFICATION

# REPAIR PARTS

TRACTOR -- MODEL NO. LR112 (HE1236B), PRODUCT NO. 954 82 00-61

## ENGINE



KEY PART  
NO. NO.

DESCRIPTION

KEY PART  
NO. NO.

DESCRIPTION

1	817 06 04-08	Screw, Hex Thd. Cut 1/4-20 x 1/2
2	532 13 30-25	Control, Throttle
3	-----	Engine, Briggs and Stratton Model No. 282707
4	871 07 05-12	Screw, Hex, Cap 5/16-18 x 3/4
5	810 04 05-00	Washer, Lock Heavy Helical Spring 5/16
6	532 27 22-93	Gasket, Exhaust
7	811 05 06-00	Washer Ext. Tooth 3/8
9	819 10 12-16	Washer 5/16 x 3/4 x 16
10	810 04 04-00	Washer, Lock Hvy Hlcl Spring 1/4
11	-----	Bolt, Hex Fin. (Order From Eng. Mfg.)

12	532 13 74-37	Muffler
13	532 10 13-26	Deflector, Muffler
14	817 03 08-08	Screw, Spiderloc
15	532 13 71-80	Arrester, Spark (Optional equipment)
16	532 12 79-51	Stop, Throttle
17	817 49 06-24	Screw, Hex Washer Head, Thdrol. 3/8-16 x 1-1/2
39	532 12 88-61	Nut, Flange 1/4-20

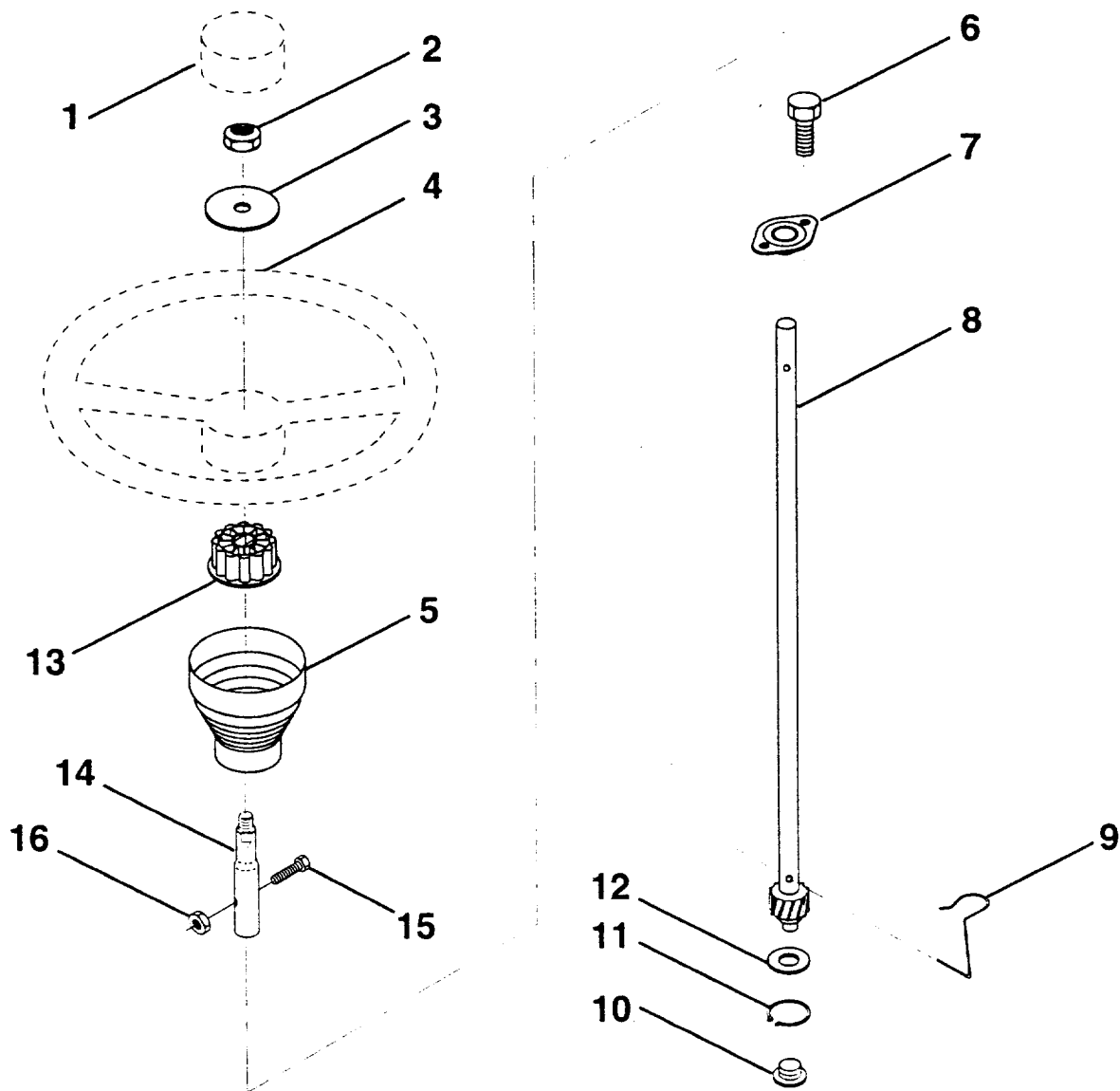
**NOTE:** All component dimensions given in U.S. inches  
1 inch = 25.4 mm

HARDWARE SHOWN LARGER FOR EASIER IDENTIFICATION

# REPAIR PARTS

TRACTOR -- MODEL NO. LR112 (HE1236B), PRODUCT NO. 954 82 00-61

## STEERING WHEEL



KEY NO.	PART NO.	DESCRIPTION
1	532 12 44-16	Insert, Wheel, Steering
2	532 12 47-01	Nut, Lock 3/8-24 UNF
3	819 13 38-08	Washer 12/32 x 2-3/8 x 8 Ga.
4	532 12 44-15	Wheel, Steering
5	532 12 73-96	Sleeve, Steering
6	817 43 10-08	Screw Hex #10-16 x 1/2 TY-B
7	532 10 28-03	Bushing, Steering
8	532 14 73-91	Shaft, Steering
9	532 12 42-10	Clip, Steering

KEY NO.	PART NO.	DESCRIPTION
10	532 12 34-38	Bushing, Lower, Steering
11	812 00 00-45	Ring, Retaining
12	819 21 16-16	Washer 21/32 x 1 x 16 Ga.
13	532 10 48-20	Adaptor, Wheel, Steering
14	532 14 73-92	Extension Shaft, Steering
15	874 78 05-20	Bolt, Fin, Hex 5/16-18 Unc
16	873 80 05-00	Nut, Lock, Hex w/Ins 5/16-18 Unc

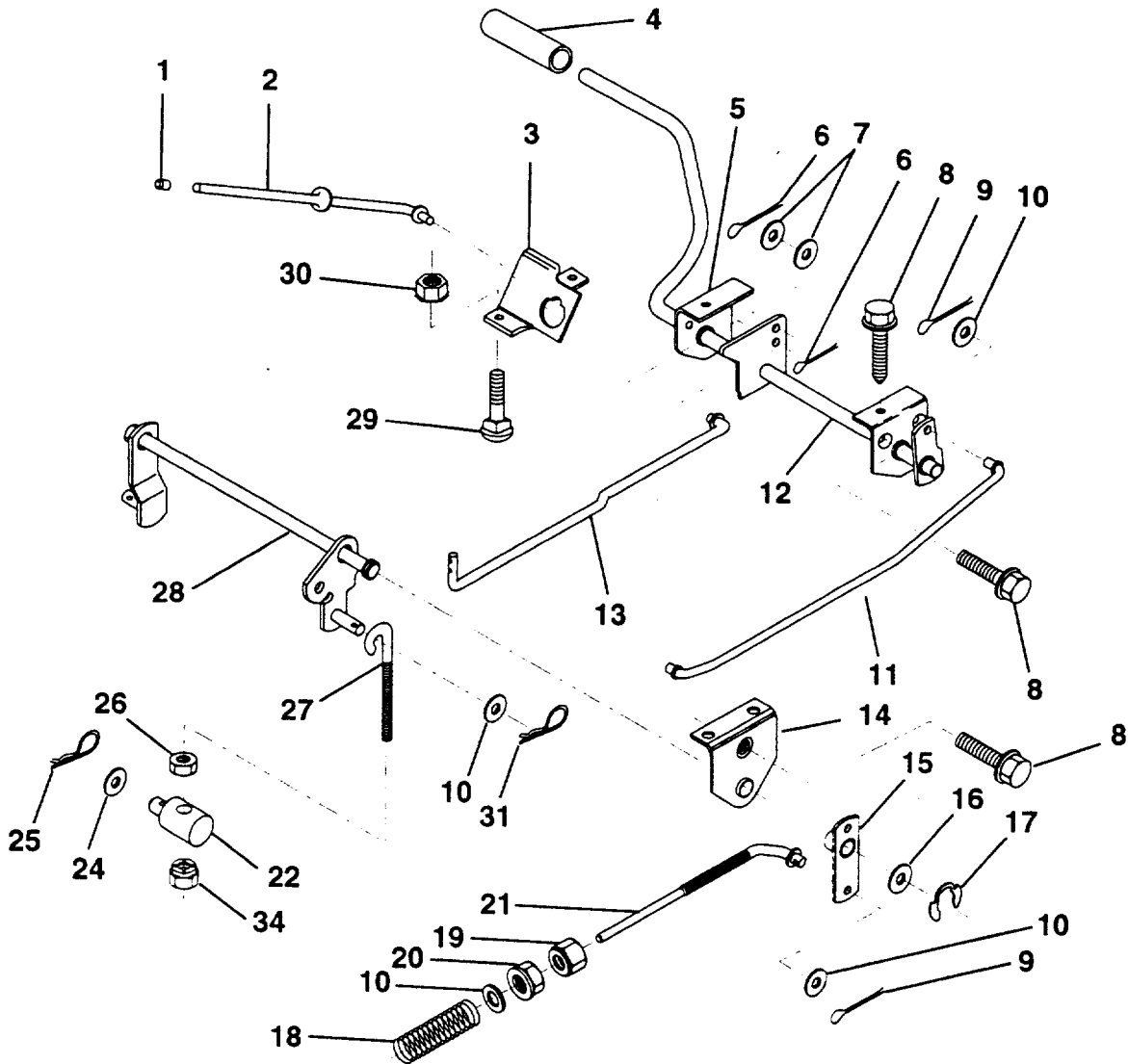
**NOTE:** All component dimensions given in U.S. inches  
1 inch = 25.4 mm

**HARDWARE SHOWN LARGER FOR EASIER IDENTIFICATION**

# REPAIR PARTS

TRACTOR - - MODEL NO. LR112 (HE1236B), PRODUCT NO. 954 82 00-61

## BRAKE / REAR MOWER LIFT ASSEMBLY



KEY NO.	PART NO.	DESCRIPTION	KEY NO.	PART NO.	DESCRIPTION
1	532 07 16-73	Cap Plunger	17	812 00 00-34	Ring, Klip
2	532 12 34-36	Rod Parking Brake	18	532 10 68-88	Spring, Brake Rod
3	532 12 34-37	Bracket, Parking Brake	19	873 35 06-00	Nut, Hex, Jam 3/8-16 UNC
4	532 00 81-56	Cover, Pedal	20	873 80 06-00	Nut, Lock, Hex w/ins 3/8-16 Unc
5	532 12 25-04	Bracket, Clutch/Brake Pedal, L.H.	21	532 13 14-60	Rod, Rear Brake
6	876 02 03-12	Pin, Cotter 3/32 x 3/4	22	532 14 45-85	Trunnion, Lift
7	819 13 10-16	Washer 13/32 x 5/8 x 16 Ga.	24	819 13 20-12	Washer 13/32 x 1-1/4 x 12 Ga.
8	817 49 05-08	Screw, Hex, Thd. Roll. 5/16-18 x 1/2	25	532 12 49-61	Spring, Retainer
9	876 02 04-12	Pin, Cotter 1/8 x 3/4	26	873 93 06-00	Nut, Centerlock 3/8-16 UNC
10	819 13 13-16	Washer 13/32 x 13/16 x 16 Ga.	27	532 12 73-69	Link, Threaded
11	532 12 35-43	Rod, Brake Front	28	532 14 07-76	Assembly, Rear Mower Lift
12	532 13 99-33	Assembly, Clutch/Brake Pedal	29	872 11 05-06	Bolt, Carriage 5/16-18 UNC x 3/4
13	532 12 33-94	Rod, Clutch	30	873 51 05-00	Nut, Keps 5/16-16 UNC
14	532 12 19-78	Bracket, Lift, Shaft	31	532 12 46-60	Retainer Spring
15	532 13 33-32	Assembly, Brake, Pivot, Arm	34	873 68 06-00	Locknut, Crownlock 3/8-16
16	819 25 18-16	Washer 25/32 x 1-1/8 x 16 Ga.			

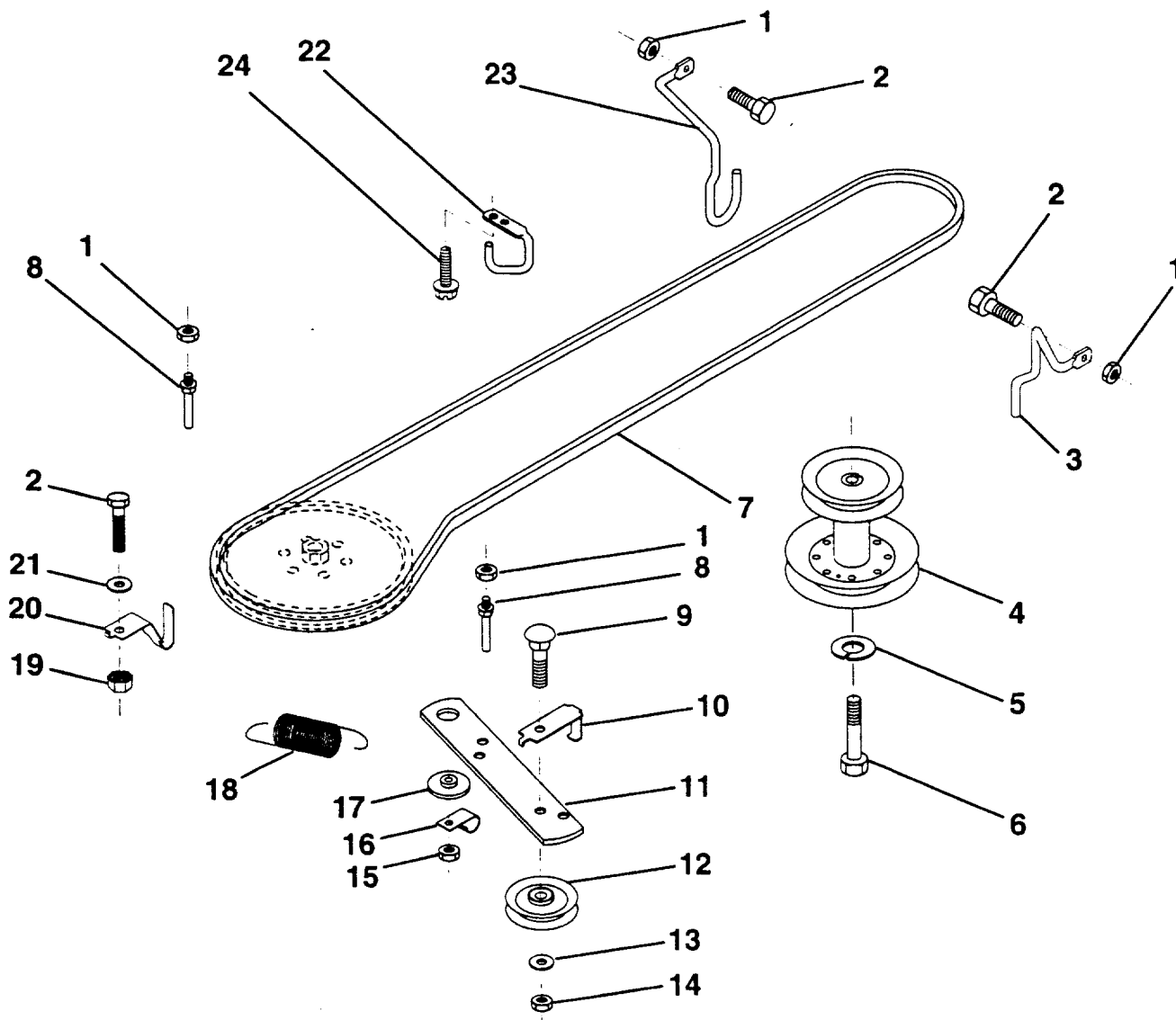
**NOTE:** All component dimensions given in U.S. inches  
1 inch = 25.4 mm

**HARDWARE SHOWN LARGER FOR EASIER IDENTIFICATION**

# REPAIR PARTS

TRACTOR - - MODEL NO. LR112 (HE1236B), PRODUCT NO. 954 82 00-61

## GROUND DRIVE



KEY NO.	PART NO.	DESCRIPTION	KEY NO.	PART NO.	DESCRIPTION
1	873 68 05-00	Nut, Crownlock 5/16-18	14	873 93 06-00	Nut, Centerlock 3/8-16 UNC
2	874 76 05-12	Bolt, Hex Hd 5/16-18 UNC x 3/4	15	873 68 06-00	Nut, Crownlock 3/8-16
3	532 14 13-42	Keeper, Mower Drive, R. H.	16	532 12 64-71	Clip, Insulated
4	532 13 80-29	Pulley, Engine	17	532 12 20-52	Spacer, Retainer
5	810 04 07-00	Washer, Lock 7/16	18	532 13 14-59	Spring Extension
6	871 17 07-44	Bolt Hex 7/16-20 Gr. 5	19	873 51 05-00	Nut, Keps 5/16-18 UNC
7	532 12 65-20	Traction, V-Belt Drive	20	532 13 99-19	Keeper, T/A Ground Drive Belt
8	532 12 34-05	Keeper, T/A Ground Drive Belt	21	819 11 10-16	Washer 11/32 x 5/8 x 16 Ga.
9	872 14 06-12	Bolt, Carr. 3/8-16 UNC x 1-1/2	22	532 12 34-04	Keeper, Frame Ground Drive Belt
10	532 12 33-96	Keeper, Belt Ground Drive Idler	23	532 14 09-16	Keeper, Mower Drive, L. H.
11	532 14 09-11	Arm, Ground Drive Clutch	24	817 72 04-08	Screw, Thd. Cut 1/4-20 x 1/2
12	532 12 36-74	Idler, Flat			
13	819 13 13-16	Washer 13/32 x 13/16 x 16 Ga.			

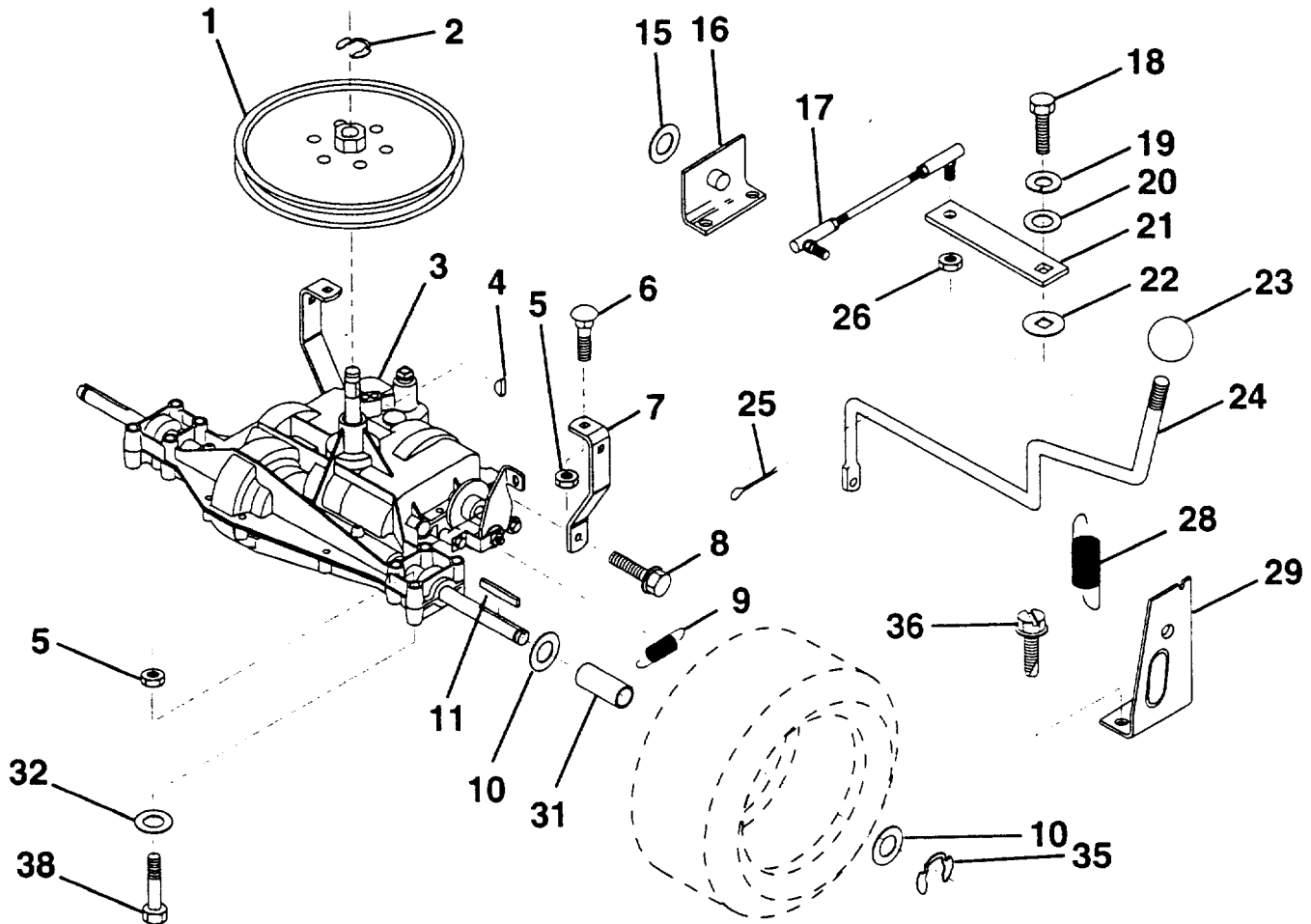
**NOTE:** All component dimensions given in U.S. inches  
1 inch = 25.4 mm

**HARDWARE SHOWN LARGER FOR EASIER IDENTIFICATION**

# REPAIR PARTS

TRACTOR -- MODEL NO. LR112 (HE1236B), PRODUCT NO. 954 82 00-61

## TRANSAXLE



**KEY PART  
NO. NO.**

**DESCRIPTION**

1	532 12 33-85	Pulley
2	812 00 00-28	Ring, Retainer
3	532 12 70-50	Transaxle, Peerless 5 Spd. Model No. 930-009
4	532 12 50-96	Key, Woodruff #9
5	873 68 05-00	Nut, Crownlock 5/16-18
6	872 14 05-06	Bolt, Carriage 5/16-18 UNC x 3/4
7	532 12 33-78	Strap, Torque
8	817 49 05-12	Screw 5/16-18 x 3/4
9	532 14 66-82	Spring, Brake
10	532 12 17-49	Washer 25/32 x 1-1/4 x 16 Ga.
11	532 12 35-83	Key, Square
15	819 17 16-16	Washer 17/32 x 1 x 16 Ga.
16	532 12 46-00	Support Handle Shift LH
17	532 12 62-93	Link, Shift
18	874 55 04-12	Bolt, Fin Hex 1/4-28 UNF x 3/4 Gr. 8
19	810 04 04-00	Washer, Lock 1/4

**KEY PART  
NO. NO.**

**DESCRIPTION**

20	819 09 12-10	Washer 9/32 x 3/4 x 10 Ga.
21	532 12 62-92	Arm, Shift
22	532 10 57-01	Washer, Shift Plate
23	532 10 69-33	Knob, Rd 1/2-13
24	532 12 82-15	Rod Shift
25	876 02 04-16	Pin, Cotter 1/8 x 1
26	873 81 05-00	Locknut 5/16-24 UNF
28	532 12 80-85	Extension, Spring
29	532 12 80-84	Support Handle Shift RH
31	532 13 70-57	Spacer Axle
32	819 11 11-16	Washer 11/32 x 11/16 x 16 Ga.
35	812 00 00-01	E-Ring
36	817 72 04-08	Screw, Thd. Cut 1/4-20 x 1/2
38	874 49 05-44	Bolt, Hex, Flghd. 5/16-18

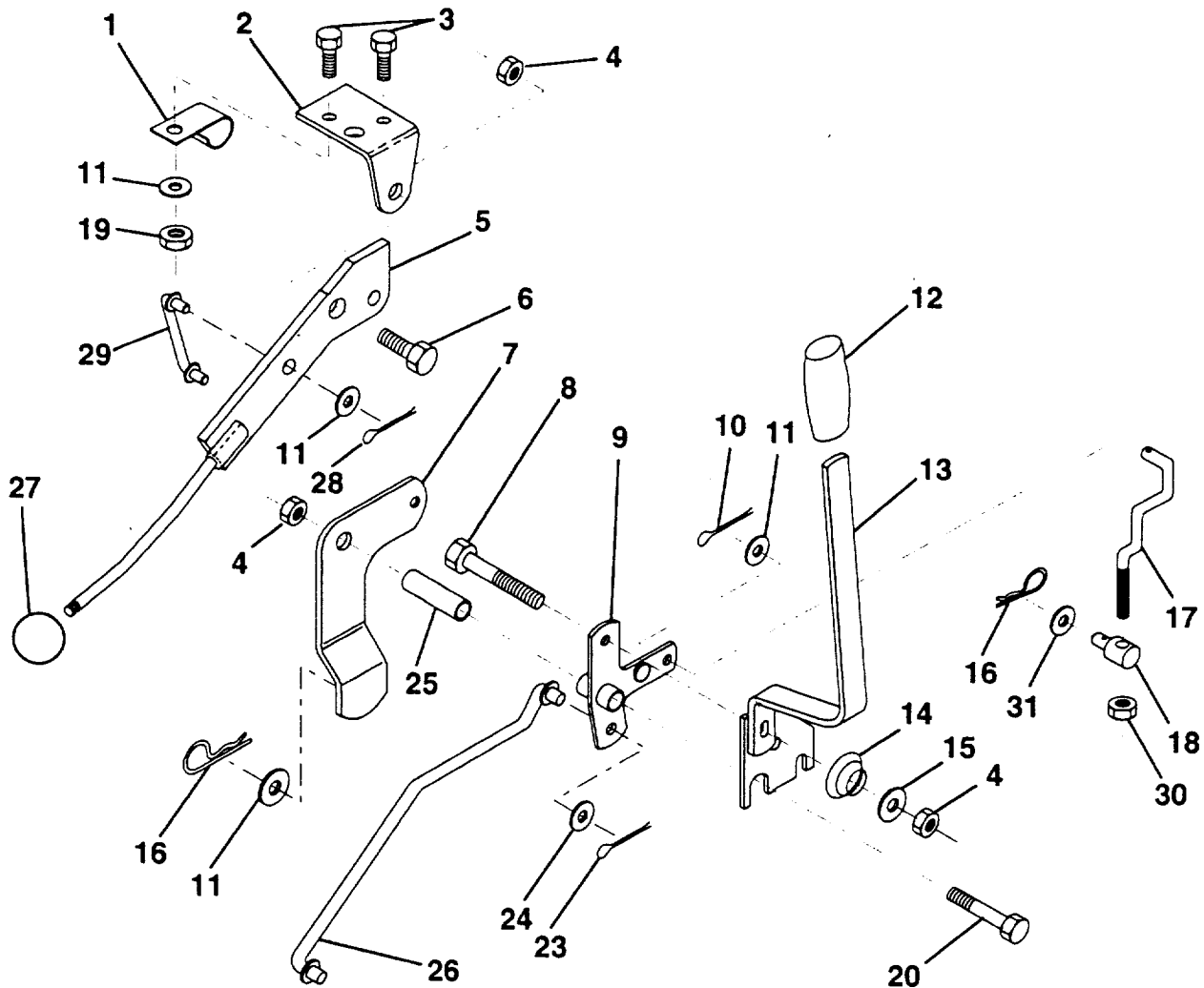
**NOTE:** All component dimensions given in U.S. inches  
1 inch = 25.4 mm

**HARDWARE SHOWN LARGER FOR EASIER IDENTIFICATION**

# REPAIR PARTS

TRACTOR - - MODEL NO. LR112 (HE1236B), PRODUCT NO. 954 82 00-61

## MOWER LIFT LEVER



### KEY PART NO. NO.

### DESCRIPTION

1	532 12 64-70	Clip, Insulated
2	532 12 20-18	Bracket, Mower Clutch
3	871 11 04-08	Bolt, Fin. Hex 1/4-20 UNC x 1/2
4	873 68 06-00	Nut, Crownlock 3/8-16
5	532 14 51-87	Assembly, Clutch Lever
6	532 10 64-51	Bolt, Shoulder
7	532 13 53-71	Assembly, Mower Clutch Arm
8	874 76 06-36	Bolt, Hex 3/8-16 UNC x 2-1/4
9	532 12 19-30	Assembly, Bellcrank Lift
10	876 02 04-12	Pin, Cotter 1/8 x 3/4
11	819 13 13-16	Washer 13/32 x 13/16 x 16 Ga.
12	532 13 18-61	Grip, Handle
13	532 13 93-52	Assembly, Lift Handle
14	532 12 34-96	Spring, Compression
15	819 13 12-12	Washer 13/32 x 3/4 x 12 Ga.
16	532 12 49-61	Retainer, Spring

### KEY PART NO. NO.

### DESCRIPTION

17	532 12 73-59	Link, Front Lift
18	532 14 20-28	Trunnion, Threaded 3/8-16
19	873 68 04-00	Nut, Crownlock 1/4-20
20	874 76 06-44	Bolt, Fin. Hex 3/8-16 UNC x 2-3/4
23	876 02 04-16	Pin, Cotter 1/8 x 1
24	819 17 16-12	Washer 17/32 x 1-1/4 x 12 Ga.
25	532 12 19-33	Tube, Spacer
26	532 14 14-70	Rod, Mower Lift
27	532 10 69-32	Knob
28	876 02 03-12	Pin, Cotter 3/32 x 3/4
29	532 13 16-55	Link, Mower Clutch
30	873 35 06-00	Nut Hex Jam 3/8-16 x 1.30
31	819 13 20-12	Washer 13/32 x 1 - 1/4 x 12 Ga.

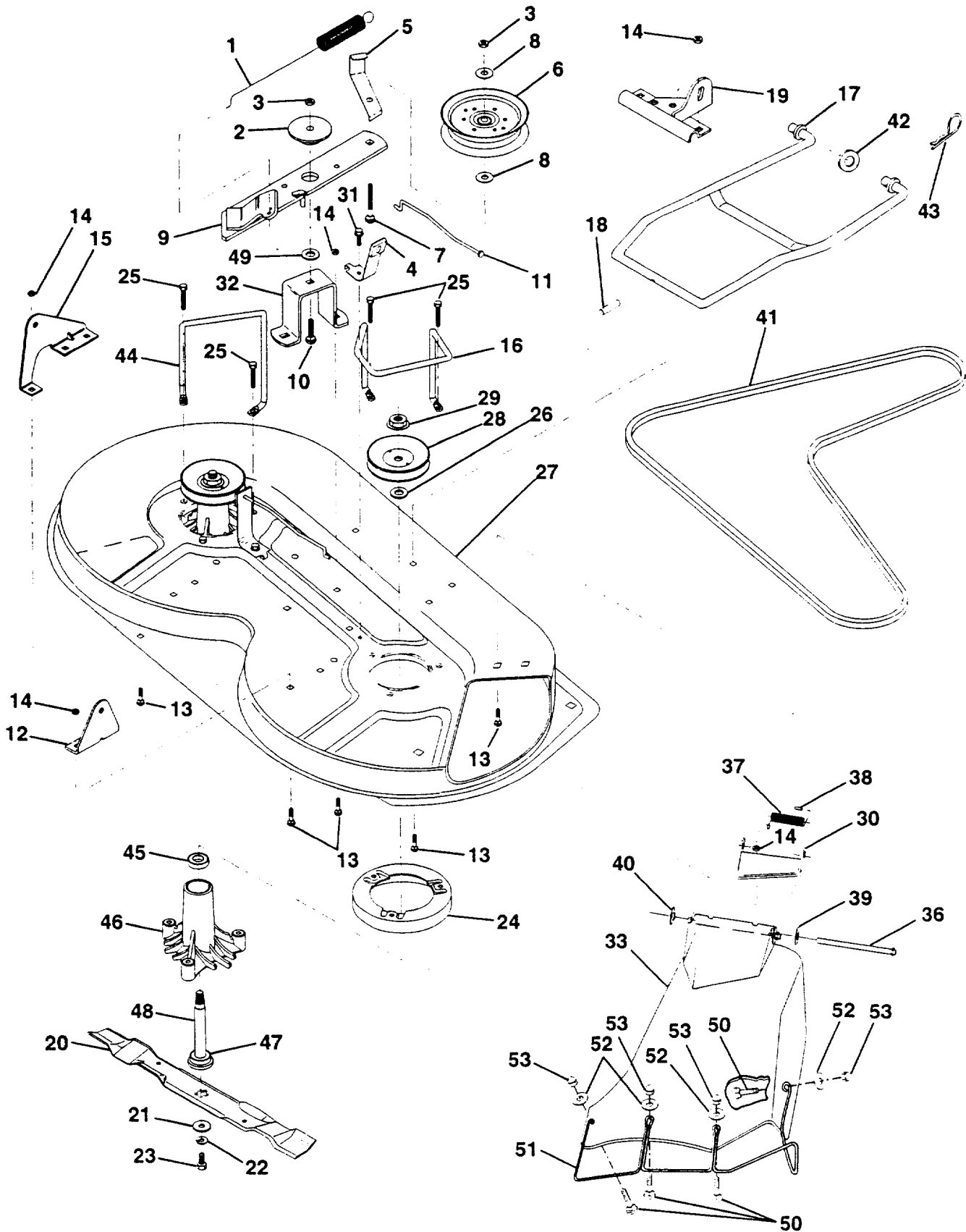
**NOTE:** All component dimensions given in U.S. inches  
1 inch = 25.4 mm

**HARDWARE SHOWN LARGER FOR EASIER IDENTIFICATION**



# REPAIR PARTS

TRACTOR -- MODEL NO. LR112 (HE1236B), PRODUCT NO. 954 82 00-61  
MOWER DECK



# REPAIR PARTS

## TRACTOR -- MODEL NO. LR112 (HE1236B), PRODUCT NO. 954 82 00-61 MOWER DECK

KEY NO.	PART NO.	DESCRIPTION	KEY NO.	PART NO.	DESCRIPTION
1	532 14 00-64	Spring, Mower Clutch	30	532 13 66-31	Bracket, Asm. Deflector
2	532 12 20-52	Spacer, Retainer	31	817 49 05-08	Screw, Hex Wsh. Thdrol. 5/16-18 x 1/2
3	873 68 06-00	Nut, Crownlock 3/8-16	32	532 12 20-51	Arm, Support Idler Mower
4	532 13 08-40	Brake Asm	33	532 13 90-83	Deflector
5	532 13 12-51	Guide, Belt Idler	36	532 12 19-80	Rod, Hinge
6	532 12 13-16	Pulley, Flat Idler	37	532 12 37-13	Spring, Torsion Deflector
7	872 11 06-16	Bolt, Carr. 3/8-16 x 1-3/4 Gr. 5	38	532 10 53-04	Cap, Sleeve
8	819 13 14-10	Washer 13/21 x 7/8 x 10 Ga.	39	819 11 10-16	Washer 11/32 x 5/8 x 16 Ga.
9	532 12 77-44	Arm Asm., Idler Mower	40	532 11 04-52	Pushnut
10	872 14 06-10	Bolt, Carriage 3/8-16 x 1-1/4	41	532 13 12-64	V-Belt
11	532 13 08-41	Rod, Brake	42	819 17 16-16	Washer 11/32 x 5/8 x 16 Ga.
12	532 12 73-56	Bracket, Lift R. H. Rear	43	532 12 46-60	Retainer, Spring
13	872 14 05-06	Bolt, Carriage 5/16-18 x 3/4	44	532 14 06-08	Keeper, L. H.
14	873 68 05-00	Nut, Crownlock 5/16-18	45	532 11 04-85	Bearing
15	532 12 73-57	Bracket, Lift L. H. Rear	46	532 12 87-74	Housing Mandrel Vented
16	532 14 00-93	Keeper, R. H.	47	532 12 98-95	Bearing
17	532 12 85-08	Link, Asm. Mower Stabilizer	48	532 13 76-45	Shaft, Mandrel (Includes Key # 47)
18	532 12 85-11	Pin, Drive	49	532 13 39-43	Washer Hardened
19	532 12 73-80	Bracket, Asm. Front	50	871 16 10-10	Screw, Truss Hd. Phil. 10-24 x 5/8
20	532 13 84-96	Blade High Lift	51	532 13 63-83	Guard, Deflector, Mower 36" TUV (W/Form)
21	532 14 02-96	Washer, Hardened	52	819 07 07-18	Washer 7/32 x 7/16 x 18 Ga.
22	810 03 06-00	Washer, Lock 3/8	53	532 06 08-67	Nut, Acorn Hex #10-24
23	532 85 08-57	Bolt 3/8-24 x 1-1/4 Gr. 8	--	532 13 07-94	Mandrel Asm. (Includes Key No.'s 22-23, 26, 29 and 45-48)
24	532 14 03-29	Stripper	--	532 14 49-73	Deck, Mower Complete
25	532 13 87-76	Screw Thdrol Hex Hd			
26	532 12 99-63	Washer .150 Thk.			
27	532 12 99-83	Deck Assembly			
28	532 12 92-07	Pulley Mandrel			
29	532 13 72-66	Nut, Flange Lock 9/16			

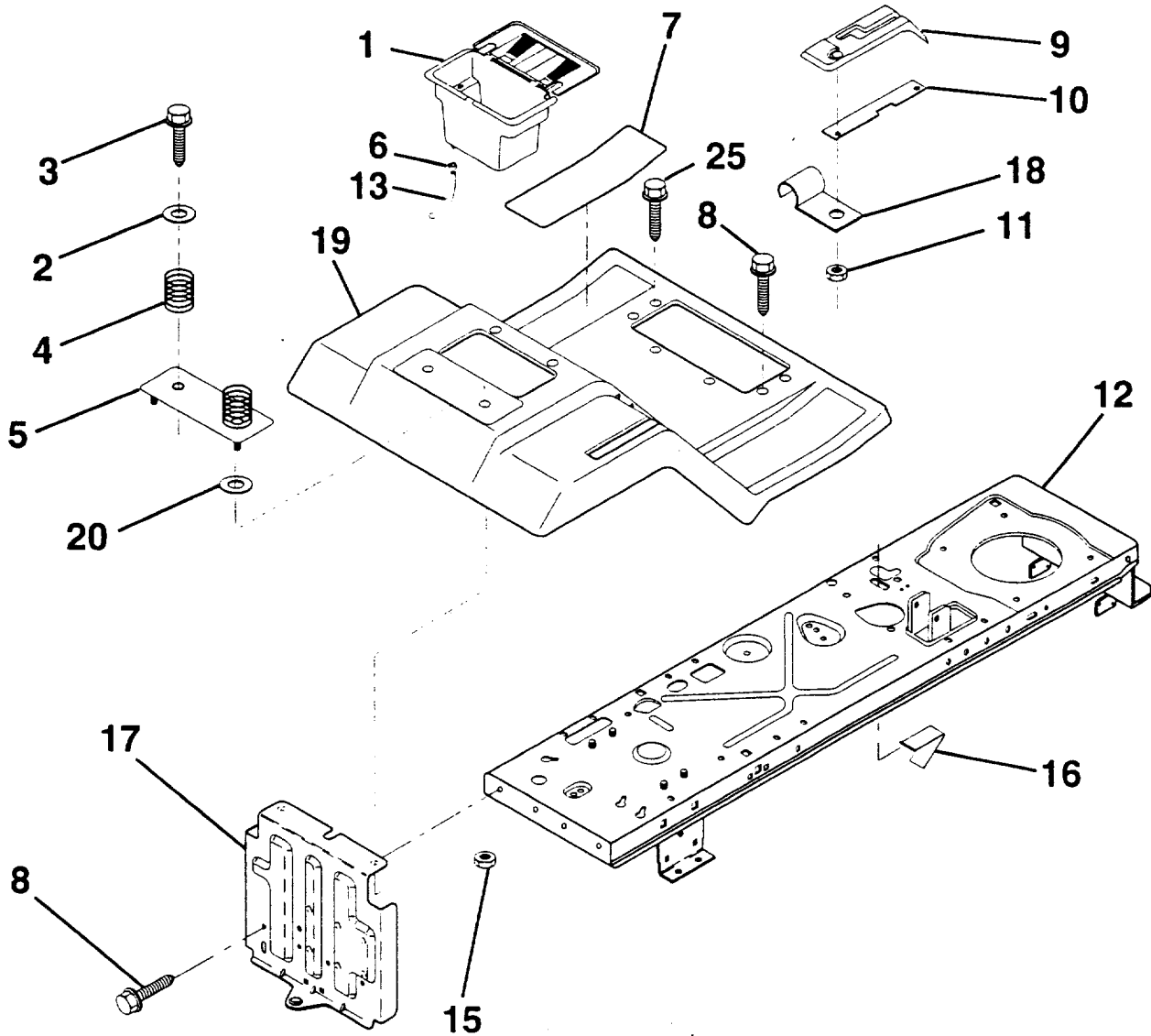
**NOTE:** All component dimensions given in U.S. inches  
1 inch = 25.4 mm

**HARDWARE SHOWN LARGER FOR EASIER IDENTIFICATION**

# REPAIR PARTS

TRACTOR - - MODEL NO. LR112 (HE1236B), PRODUCT NO. 954 82 00-61

## FENDER/CHASSIS



KEY NO.	PART NO.	DESCRIPTION
1	532 14 49-40	Case, Battery
2	819 13 20-12	Washer 13/32 x 1-1/4 x 12 Ga.
3	817 49 06-12	Screw, Hex Wsh. Thrdrol 3/8-16 x 3/4
4	532 12 41-81	Spring, Compression, Seat
5	532 12 51-42	Plate, Asm. Battery
6	532 10 95-96	Clamp, Hose
7	532 12 41-44	Pad, Footrest
8	817 49 05-12	Screw, Thdrol 5/16-18 x 3/4
9	532 12 69-97	Console, Shift Control
10	532 13 97-83	Bar, Shift Lock
11	532 12 43-46	Nut, Self-Threading, Wsher Hd 3/16

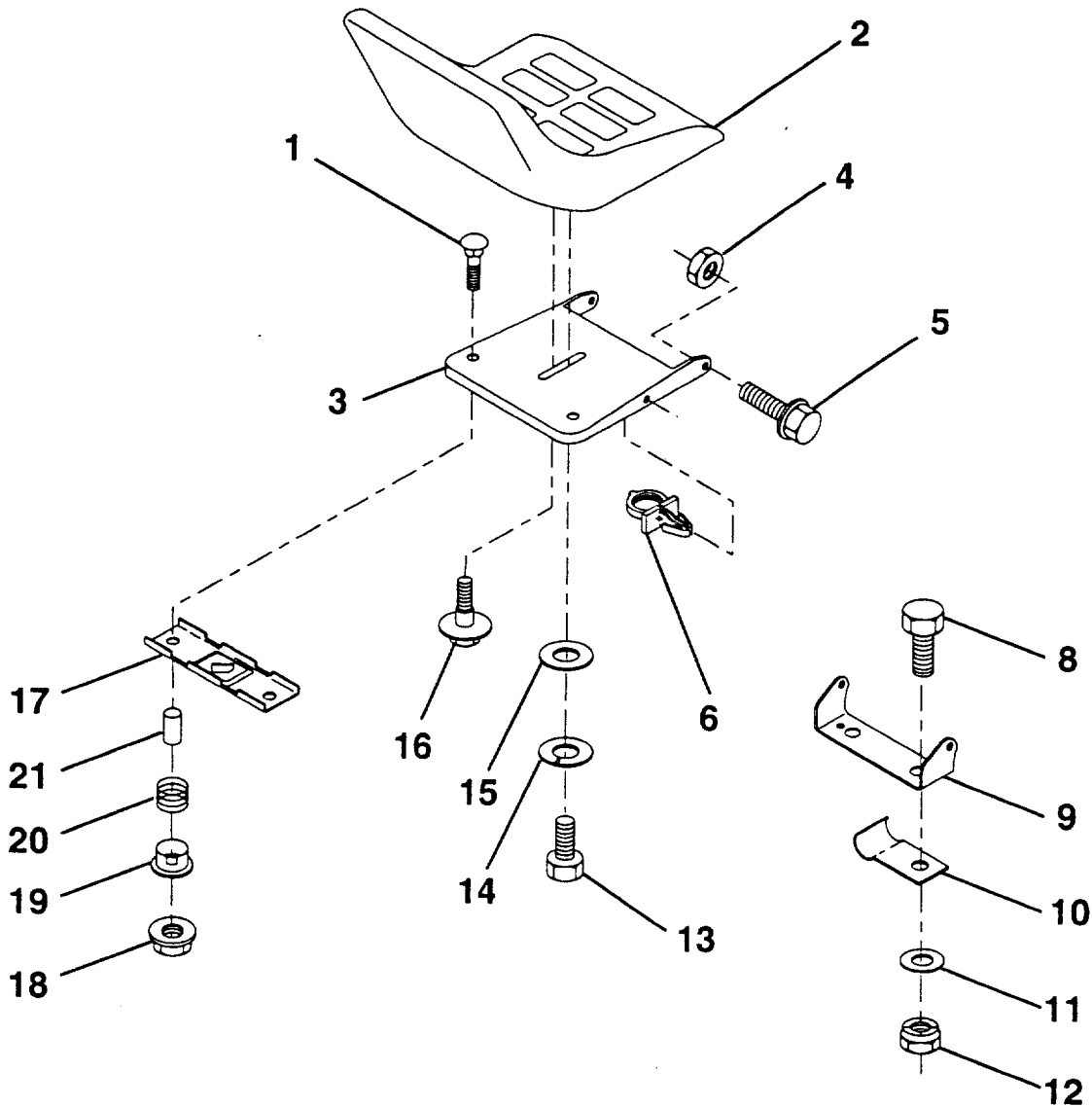
KEY NO.	PART NO.	DESCRIPTION
12	532 14 51-90	Assembly, Frame
13	532 10 92-38	Tube, Battery Drain
15	873 64 04-00	Nut, Keps 1/4-20 UNC
16	532 14 17-36	Switch Actuator
17	532 14 07-82	Drawbar
18	532 12 64-70	Clip, Insulated
19	532 14 13-93	Fender/Footrest
20	819 09 14-13	Washer 9/32 x 7/8 x13 Ga.
25	817 19 05-16	Screw Hex 5/16-18 Unc x1

**NOTE:** All component dimensions given in U.S. inches  
1 inch = 25.4 mm

**HARDWARE SHOWN LARGER FOR EASIER IDENTIFICATION**

# REPAIR PARTS

TRACTOR - - MODEL NO. LR112 (HE1236B), PRODUCT NO. 954 82 00-61  
SEAT



KEY PART NO.	PART NO.	DESCRIPTION
1	872 05 04-11	Bolt, Carriage 1/4-20 x 1-3/8
2	532 14 08-38	Seat
3	532 14 05-52	Pan, Seat
4	873 80 05-00	Nut, Lock Hex w/Ins. 5/16-18
5	532 13 98-88	Bolt, Shoulder 5/16-18 UNC
6	532 14 50-06	Clip, Insulated
8	874 76 06-16	Bolt, Fin Hex 3/8-16 UNC x 1
9	532 14 05-51	Bracket, Pivot Seat
10	532 12 64-71	Clip, Insulated
11	819 13 32-10	Washer 12/32 x 2 x 10 Ga.
12	873 80 06-00	Nut, Lock Hex w/Wsh 3/8-16

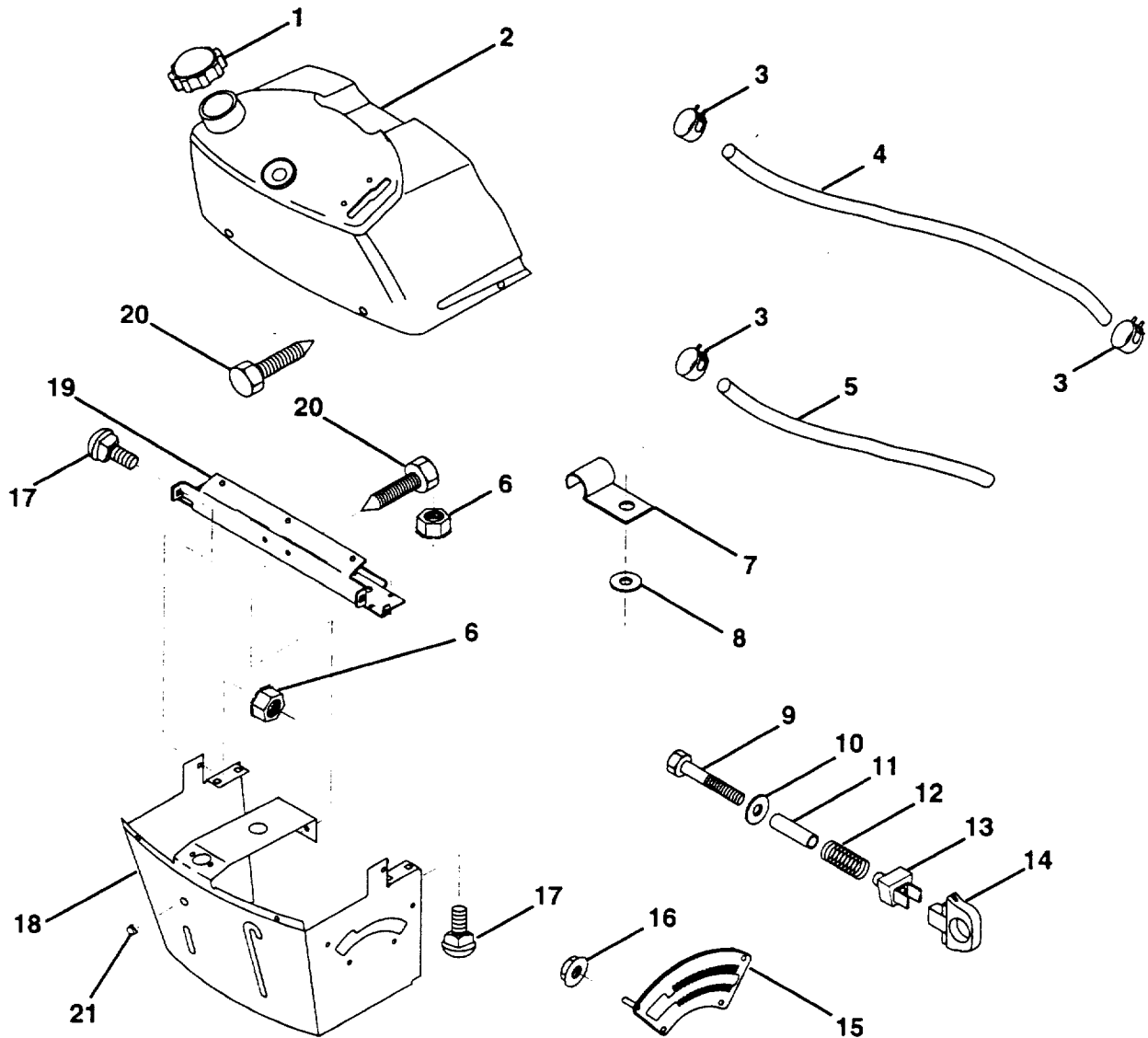
KEY PART NO.	PART NO.	DESCRIPTION
13	874 78 08-14	Bolt, Hex 1/2-13 x 7/8
14	810 04 08-00	Washer, Lock Hvy. Hlicl Spring 1/2
15	819 17 19-12	Washer, 17/32 x 1-3/16 x 12 Ga.
16	532 12 70-18	Bolt, Shoulder
17	532 12 12-46	Bracket, Switch, Mounting
18	532 12 39-76	Nut, Hex Large Flange Lock
19	532 12 12-48	Bushing, Snap
20	532 12 12-50	Spring, Compression
21	532 13 43-00	Spacer, Split 28 Id. x .88 Lg.

**NOTE:** All component dimensions given in U.S. inches  
1 inch = 25.4 mm

**HARDWARE SHOWN LARGER FOR EASIER IDENTIFICATION**

# REPAIR PARTS

TRACTOR - - MODEL NO. LR112 (HE1236B), PRODUCT NO. 954 82 00-61  
DASH



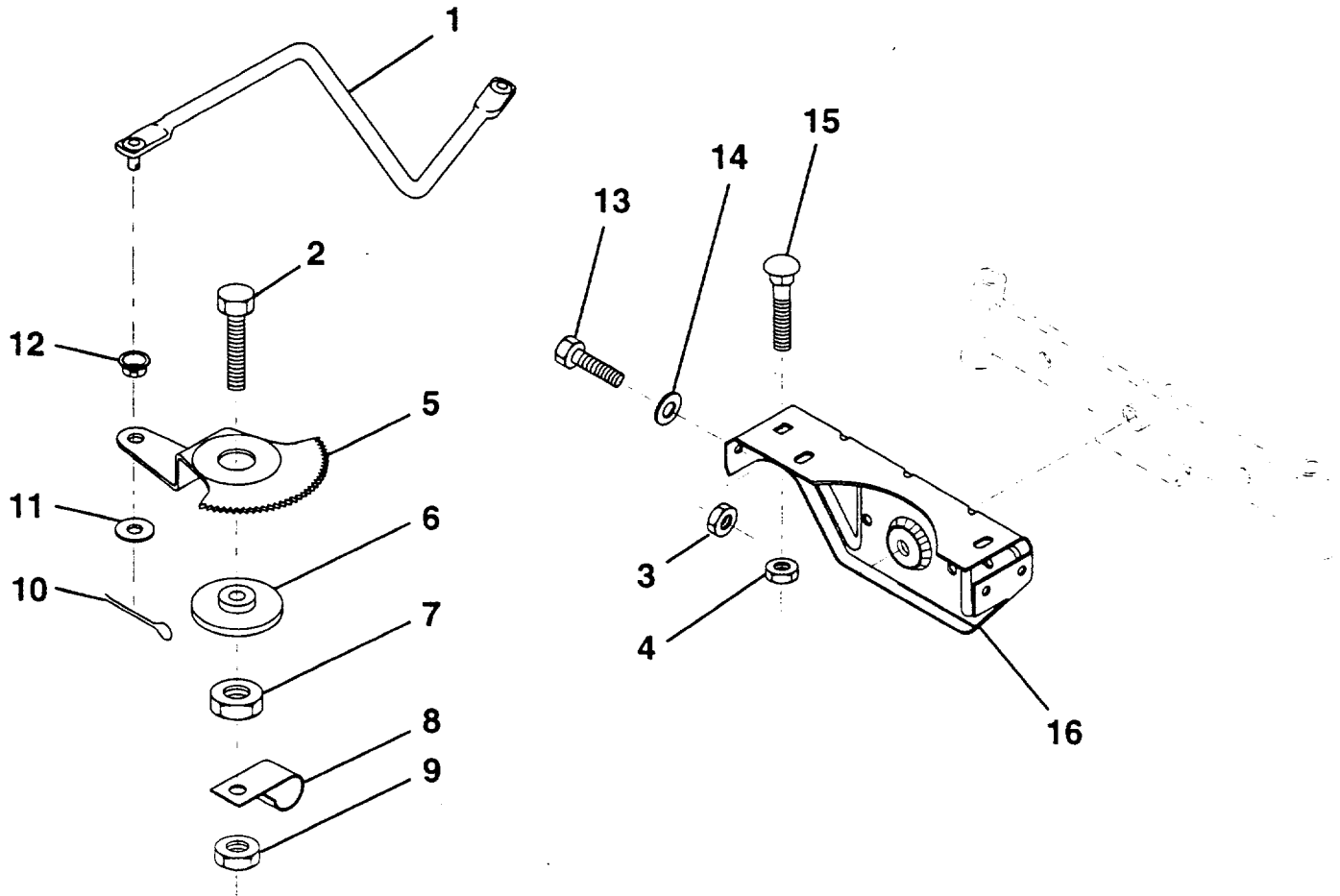
KEY NO.	PART NO.	DESCRIPTION	KEY NO.	PART NO.	DESCRIPTION
1	532 14 21-87	Cap, Fuel	13	532 12 64-50	Clip Height Adjustment
2	532 13 83-94	Assembly, Dash & Fuel Tank	14	532 12 61-15	Knob, Height Stop
3	532 12 34-87	Clamp, Hose	15	532 12 20-23	Adjustment, Quadrant Height
4	532 00 85-44	Line, Fuel	16	532 12 43-46	Nut! Self-Threading 3/16-18
5	532 00 85-48	Line, Fuel	17	872 11 04-04	Bolt, Carriage 1/4-20 x 1/2 Gr. 5
6	873 64 04-00	Nut, Hex, Keps 1/4-20	18	532 13 07-45	Support, Assembly Dash
7	532 12 49-96	Clip, Fuel Line	19	532 13 47-44	Brace, Cross
8	819 09 12-16	Washer 9/32 x 3/4 x 16 Ga.	20	817 06 04-08	Screw, Self-Tapping 1/4-20 x 1/2
9	874 76 04-28	Bolt, Hex, Fin 1/4-20 x 1-3/4	21	532 13 40-14	Plug, Dome Black
10	819 09 14-13	Washer 11/32 x 11/16 x 16 Ga.			
11	532 12 12-49	Spacer, Split			
12	532 00 37-20	Spring			

**NOTE:** All component dimensions given in U.S. inches  
1 inch=25.4mm

**HARDWARE SHOWN LARGER FOR EASIER IDENTIFICATION**

# REPAIR PARTS

TRACTOR - - MODEL NO. LR112 (HE1236B), PRODUCT NO. 954 82 00-61  
SECTOR GEAR / AXLE SUPPORT



KEY NO.	PART NO.	DESCRIPTION
1	532 13 25-66	Link, Drag
2	874 78 08-28	Bolt, Fin Hex 1/2-13 x 1-3/4
3	873 68 05-00	Nut, Lock Hex w/Ins. 5/16-18
4	873 68 06-00	Nut, Lock Hex w/Wsh 3/8-16
5	532 12 19-26	Gear, Sector
6	532 12 19-27	Bushing
7	873 03 08-00	Nut, Heavy Hex Top Lock 1/2-13 UNC
8	532 12 64-72	Clip, Insulated
9	873 68 08-00	Nut, Crownlock 3/8-16

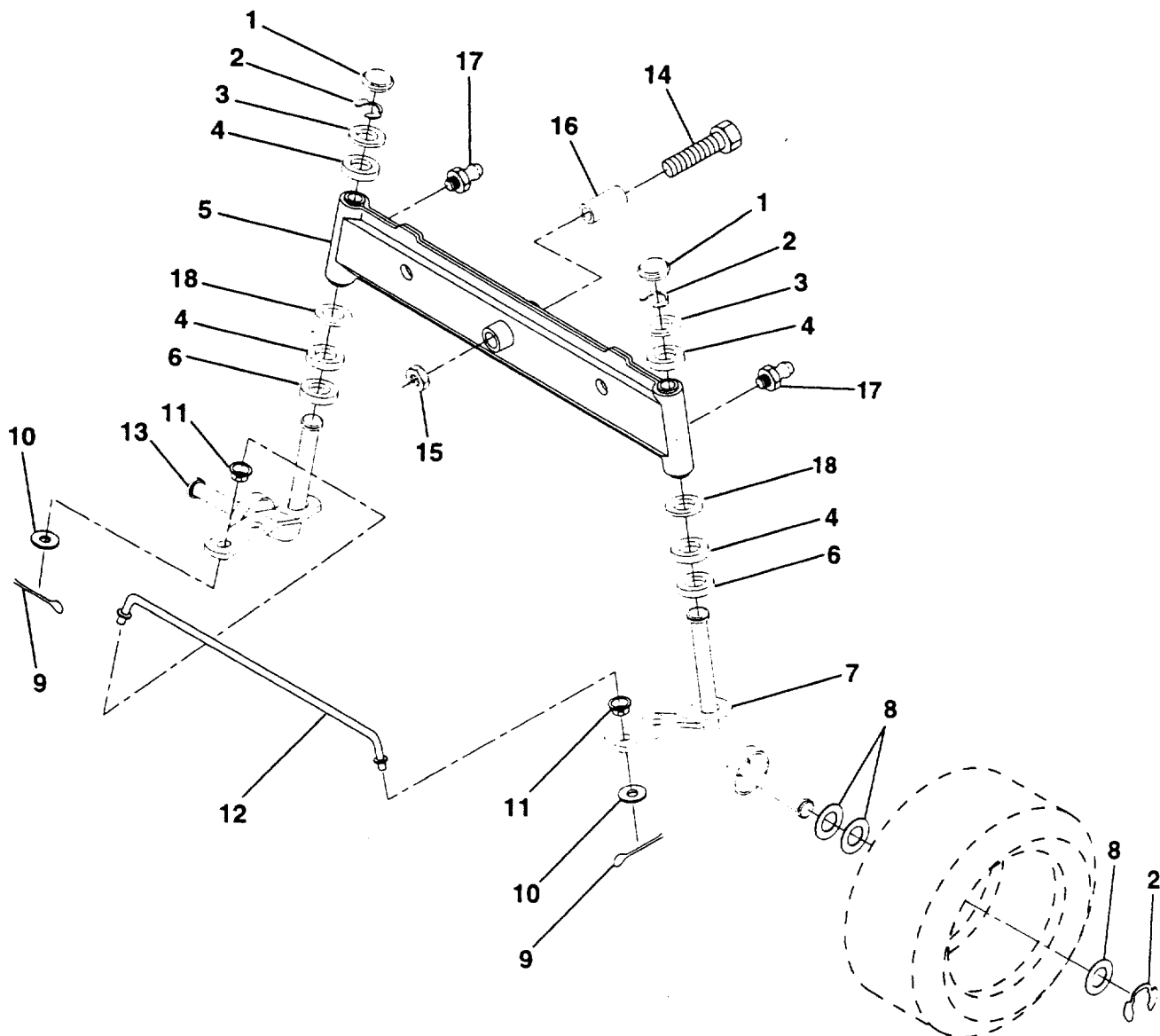
KEY NO.	PART NO.	DESCRIPTION
10	876 02 04-12	Pin, Cotter 1/8 x 3/4
11	819 13 13-16	Washer, 13/32 x 13/16 x 16 Ga.
12	532 12 68-47	Bushing
13	874 76 05-12	Bolt, Hex Hd. 5/16-18 UNC x 3/4
14	819 11 14-16	Washer 11/32 x 7/8 x 16 Ga.
15	872 11 06-06	Bolt, Carriage 3/8-16 UNC x 3/4
16	532 13 70-96	Support, Front Axle

**NOTE:** All component dimensions given in U.S. inches  
1 inch = 25.4mm

HARDWARE SHOWN LARGER FOR EASIER IDENTIFICATION

# REPAIR PARTS

TRACTOR - - MODEL NO. LR112 (HE1236B), PRODUCT NO. 954 82 00-61  
FRONT AXLE



KEY NO.	PART NO.	DESCRIPTION
1	532 12 12-32	Cap, Spindle
2	812 00 00-29	Ring, Clip
3	532 12 17-48	Washer 25/32 x 1-5/8 x 16 Ga.
4	532 12 49-37	Nyliner
5	532 14 20-33	Axle, Front
6	532 12 49-31	Bearing, Thrust
7	532 13 70-62	Spindle, R.H. Asm.
8	532 12 17-49	Washer 25/32 x 1-1/4 x 16 Ga.
9	876 02 04-12	Pin, Cotter 1/8 x 3/4
10	819 13 13-16	Washer 13/32 x 13/16 x 16 Ga.

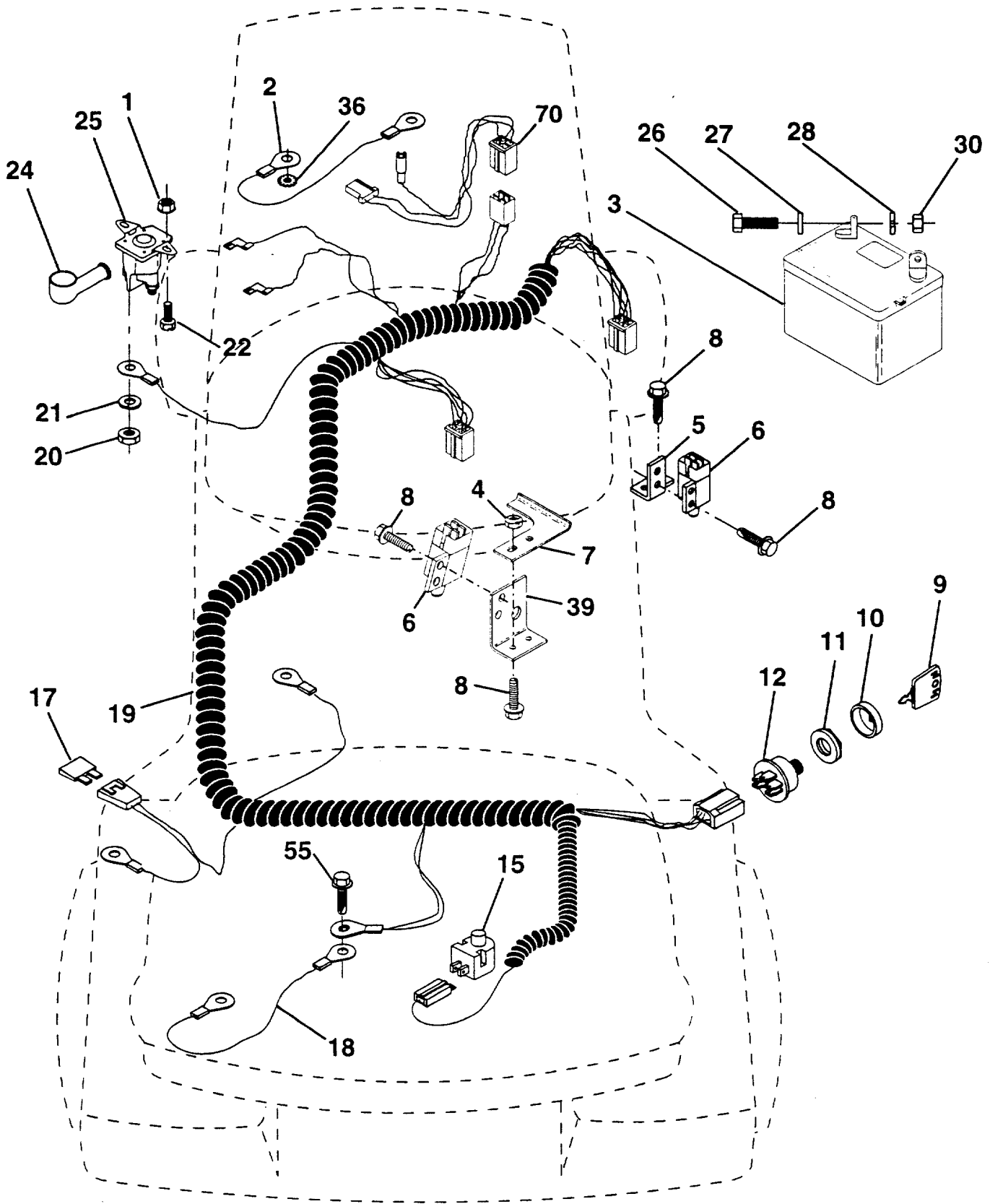
KEY NO.	PART NO.	DESCRIPTION
11	532 12 68-47	Bushing
12	532 13 04-65	Rod, Tie
13	532 13 70-61	Spindle, L.H. Asm.
14	874 01 10-56	Bolt Hex 5/1-11 x 3-1/2
15	873 90 10-00	Nut, Lock Flange 5/8-11
16	532 11 04-38	Spacer Bearing Axle
17	532 12 48-36	Fitting Grease
18	819 27 20-16	Washer 27/32 x 1-1/4 x 16 Ga.

**NOTE:** All component dimensions given in U.S. inches  
1 inch = 25.4 mm

**HARDWARE SHOWN LARGER FOR EASIER IDENTIFICATION**

# REPAIR PARTS

TRACTOR -- MODEL NO. LR112 (HE1236B), PRODUCT NO. 954 82 00-61  
ELECTRICAL





# REPAIR PARTS

TRACTOR - - MODEL NO. LR112 (HE1236B), PRODUCT NO. 954 82 00-61

## ELECTRICAL

KEY NO.	PART NO.	DESCRIPTION
1	873 64 04-00	Nut, Hex Keps 1/4-20
2	532 10 84-23	Assembly, Cable
3	532 14 61-38	Battery
4	532 06 91-80	Nut, Lock #10-24 Unc
5	532 10 82-36	Bracket, Switch
6	532 10 95-53	Switch, Interlock (4-terminal)
7	532 14 63-74	Keeper, Actuator
8	817 02 10-08	Screw, Hex Hd. Tap #10-24 x 1/2
9	532 14 04-02	Key, Steel Delta
10	532 14 12-26	Cover, Key Ignition
11	532 14 04-00	Nut, Ignition
12	532 14 49-21	Switch, Ignition
15	532 12 13-05	Switch, Plunger
17	532 10 88-24	Fuse
18	532 12 83-53	Assembly, Cable
19	532 14 60-63	Harness, Ignition
20	873 35 04-00	Nut, Hex Jam 1/4-20
21	810 09 04-00	Washer, Lock 1/4
22	871 11 04-03	Bolt, Fin. Hex 1/4-20 UNC x 1/2
24	532 13 15-63	Cover, Terminal
25	532 14 56-73	Solenoid
26	874 76 04-12	Bolt, Hex Hd. 1/4-20 UNC x 3/4
27	819 09 10-16	Washer 9/32 x 5/8 x 16
28	810 04 04-00	Washer, Lock 1/4
30	873 22 04-00	Nut, Fin. Hex 1/4-20 UNC
36	811 15 04-00	Washer Lock Inter. Tooth 1/4
39	532 14 17-35	Bracket Switch Clutch
55	817 49 05-08	Screw Thdrol 5/16 - 18 x 1/2
70	532 14 04-13	Harness Engine

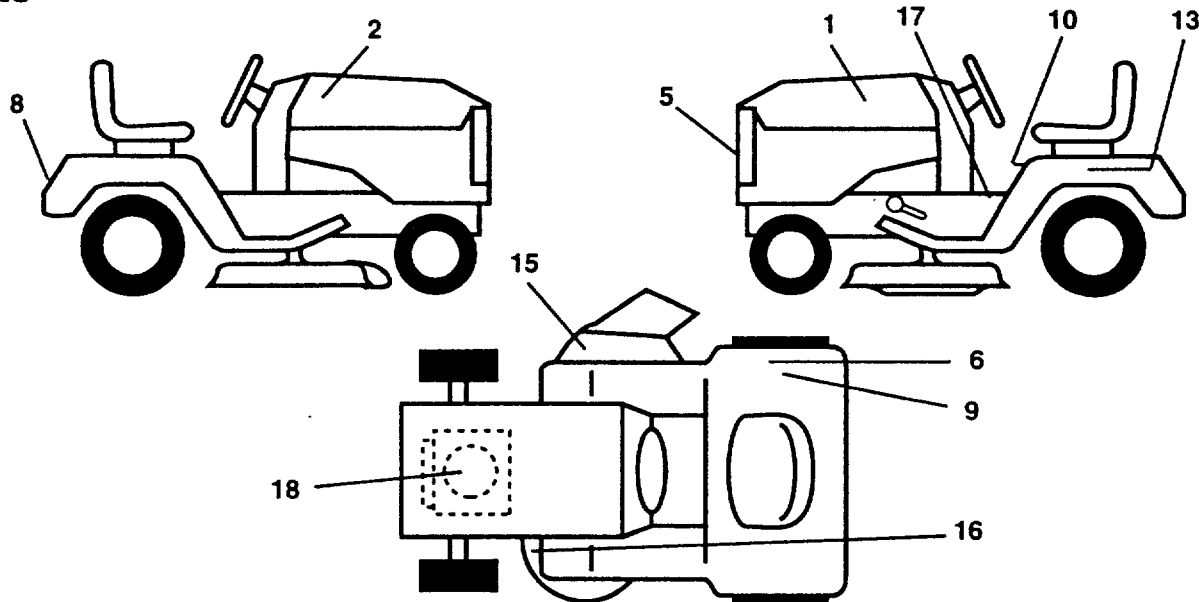
**NOTE:** All component dimensions given in U.S. inches.  
1 inch = 25.4 mm

**HARDWARE SHOWN LARGER FOR EASIER IDENTIFICATION**

# REPAIR PARTS

TRACTOR - - MODEL NO. LR112 (HE1236B), PRODUCT NO. 954 82 00-61

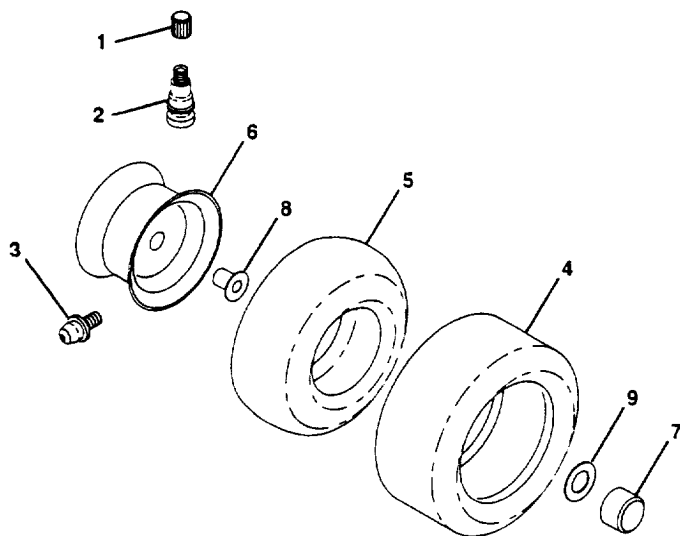
## DECALS



KEY NO.	PART NO.	DESCRIPTION
1	532 15 12-91	Decal, Hood, L. H., Husqv.
2	532 15 12-90	Decal, Hood, R. H., Husqv.
5	532 15 06-16	Decal, Logo, Grill
6	532 14 54-37	Decal Europe Stand. CE Tractors
8	532 15 06-17	Decal, Logo, Fender
9	532 12 61-87	Decal Certification (French/Dutch)
10	532 14 54-98	Decal Read Owner's Manual Symbols
13	532 14 64-51	Decal, Battery
15	532 14 54-94	Decal, Cutoffinger

KEY NO.	PART NO.	DESCRIPTION
16	532 13 68-30	Decal, V-Belt Sch.
17	532 14 55-45	Decal, Operating Instructions Symbols
18	532 27 24-40	Decal, Engine
--	532 13 83-11	Decal, Height Adjust
--	532 14 69-47	Manual, Operator's (Scan.)
--	532 14 69-48	Manual, Operator's (Euro.)
Accessories not included with tractor		
--	C36	Rear Bagger
--	CESS36	Bagger
--	MK360	Mulch Kit

## WHEELS & TIRES



KEY NO.	PART NO.	DESCRIPTION
1	532 05 91-92	Cap, Valve
2	532 06 51-39	Stem, Valve
3	532 12 49-57	Fitting, Grease\ (Front Wheels Only)
4	532 13 74-22	Tire, Front
4	532 13 27-03	Tire, Rear
5	532 05 99-04	Tube, Front (Optional Service Items Only)
5	532 00 81-34	Tube, Rear (Optional Service Items Only)
6	532 14 20-39	Rim, Front
6	532 14 16-52	Rim, Rear
7	532 10 47-57	Cap Axle
8	532 12 49-59	Bearing Flange
9	532 12 17-48	Washer 25/32 x 1-5/8 x 16 Ga.
--	532 14 43-34	Sealant, Tire (10 oz. Tube)

**NOTE:** All component dimensions given in U.S. inches  
1 inch = 25.4 mm