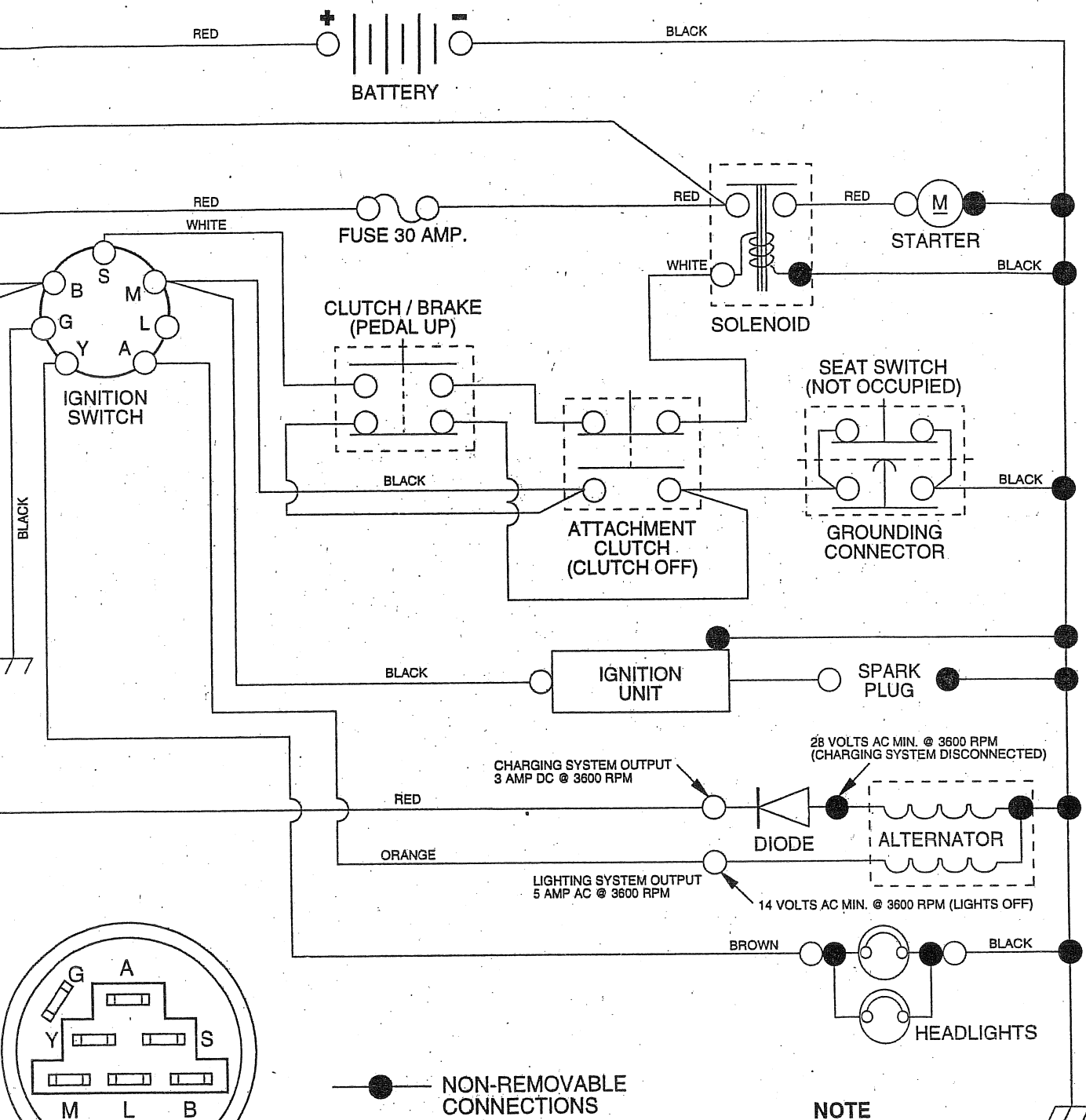


TRACTOR - MODEL NO. LT130 (HCLT130B), PRODUCT NO. 954 88 00-01

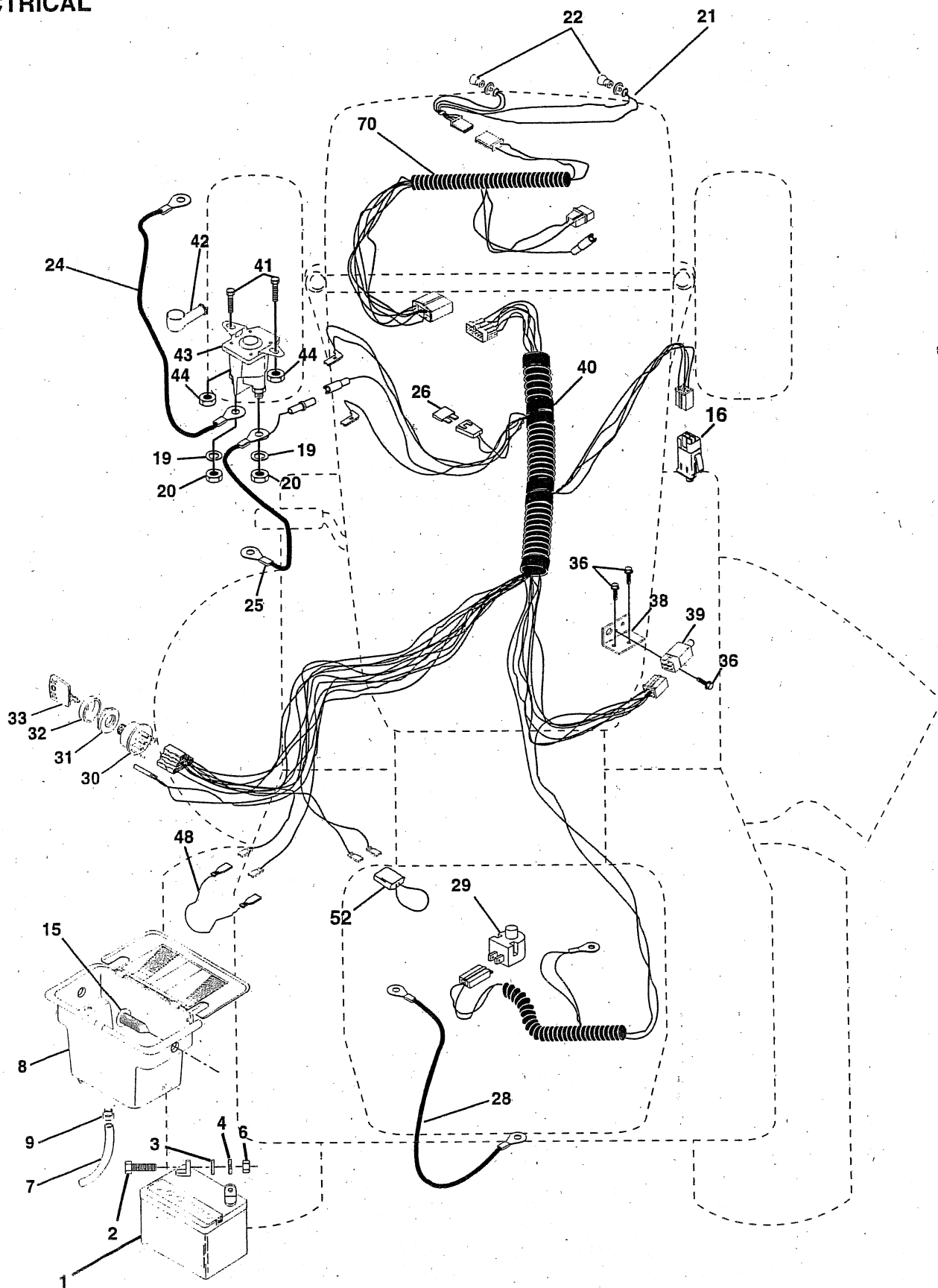
WIRING DIAGRAM



REPAIR PARTS

TRACTOR - MODEL NO. LT130 (HCLT130B), PRODUCT NO. 954 88 00-01

ELECTRICAL



REPAIR PARTS

TRACTOR - MODEL NO. LT130 (HCLT130B), PRODUCT NO. 954 88 00-01

ELECTRICAL

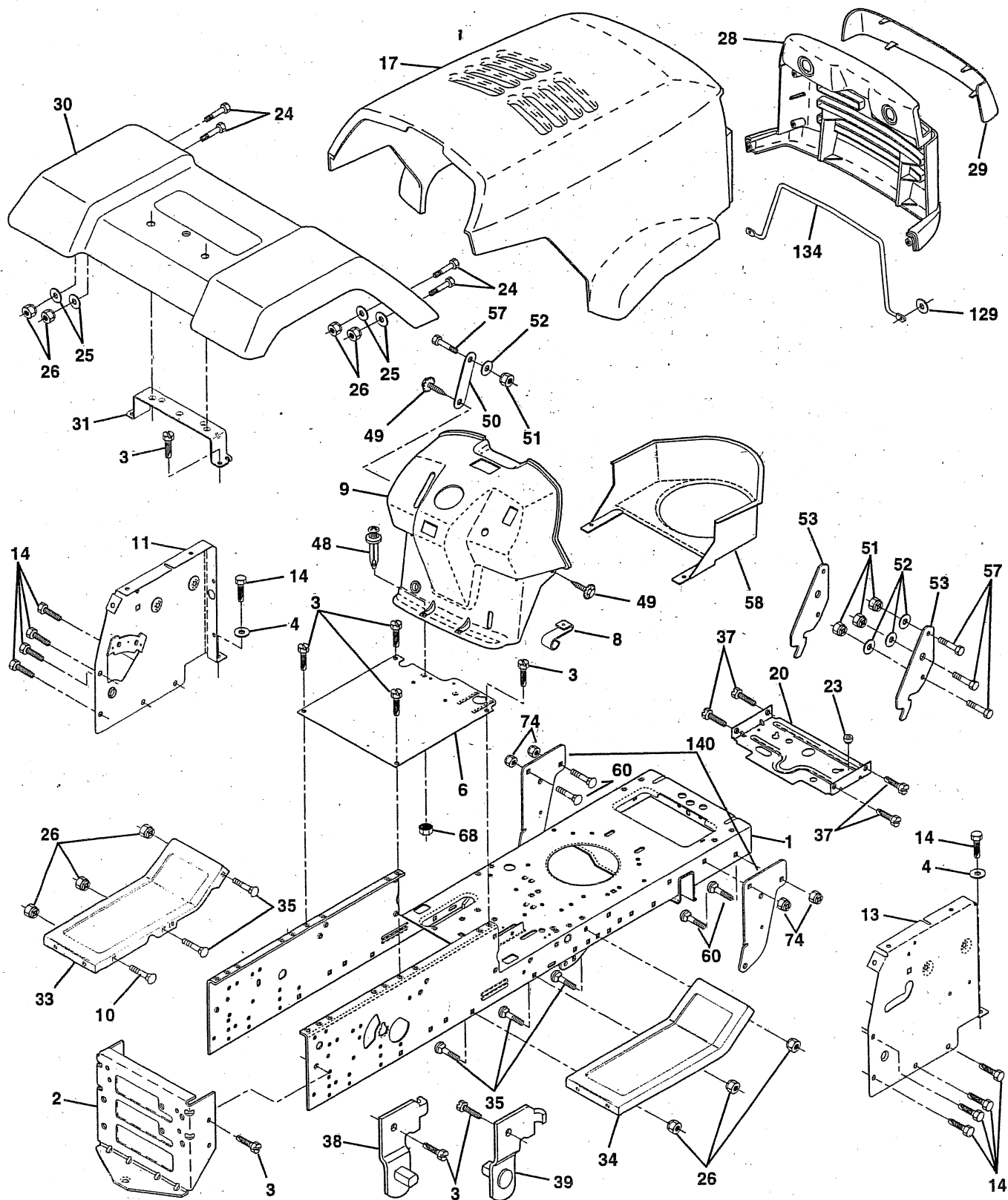
KEY NO.	PART NO.	DESCRIPTION
1	532146139	Battery 12 Volt 25 AMP
2	874760412	Bolt Hex Hd 1/4-20unc X 3/4
3	819091016	Washer 9/32 X 5/8 X 16 Ga.
4	810040400	Washer Lock Hvy Helical 1/4
6	873220400	Nut Fin Hex 1/4-20 Unc
7	532109238	Tube Plastic 12"
8	532144940	Case Battery w/2 holes 2 battery
9	532109596	Clamp Hose Olive
15	532147688	Fastener Snap-In
16	532153664	Switch Interlock Push-In
19	810090400	Washer Lock 1/4
20	873350400	Nut Jam Hex 1/4-20 Unc
21	532136850	Harness Asm Light W/4152j
22	532004152	Bulb Light #1156
24	532124780	Cable Battery 6 Ga 11" red
25	532146147	Cable Battery 6 Ga 44" red w/16 wire
26	532108824	Fuse 30 AMP Auto Green
28	532124773	Cable Ground 6 Ga 12" black
29	532121305	Switch Plunger Nc Gray
30	532140301	Switch Ign 4 pos w/lights
31	532124211	Nut Ignition
32	532141226	Cover Sw Ignition
33	532122147	Key Ign Modleded Generic
36	817021008	Screw Tap Hex #10-24unc X 1/2
38	532140336	Bracket, Switch, Interlock
39	532109553	Switch Intlk Clutch Red 4 Term
40	532151212	Harness Ign. Lt P/L Mech HM 95
41	871110408	Bolt Blk Fin Hex 1/4 - 20 x 1/2
42	532131563	Cover Terminal Red
43	532145673	Solenoid
44	873640400	Nut Keps Hex 1/4-20 Unc
48	532140844	Adapter Ammeter Rectangular
52	532141940	Protection Wire Loop
70	532141163	Harness, Eng.

NOTE: All component dimensions given in U.S. inches.
1 inch = 25.4 mm.

REPAIR PARTS

TRACTOR - MODEL NO. LT130 (HCLT130B), PRODUCT NO. 954 88 00-01

CHASSIS AND ENCLOSURES



REPAIR PARTS

TRACTOR - MODEL NO. LT130 (HCLT130B), PRODUCT NO. 954 88 00-01

CHASSIS AND ENCLOSURES

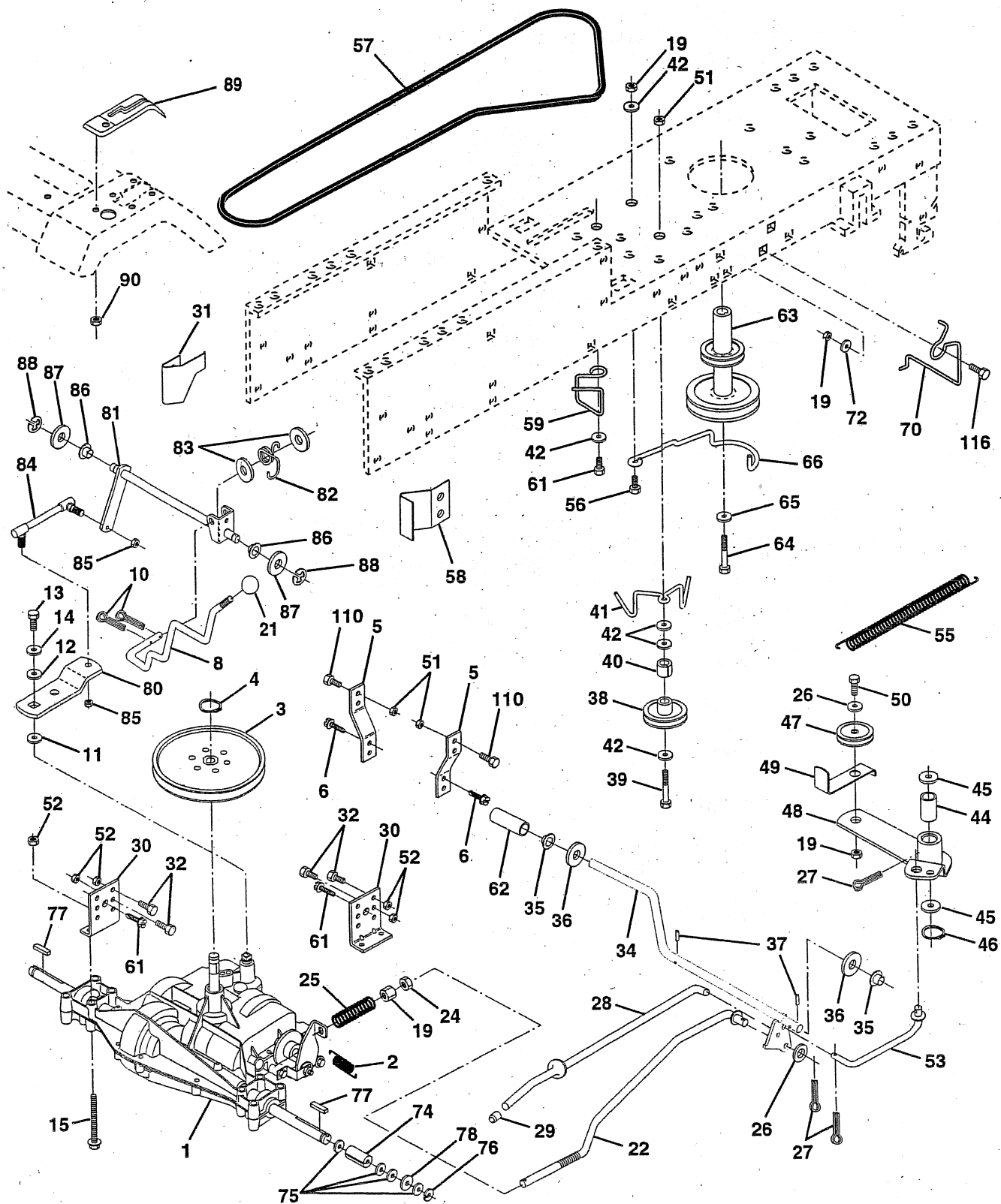
KEY NO.	PART NO.	DESCRIPTION
1	532151169	Chassis Weldment 11ga
2	532140356	Drawbar, Stretch
3	817490612	Screw Thdrol 3/8-16x3/4 Ty-tt
4	819131216	Washer 13/32 x 3/4 x 16 Ga.
6	532145206	Saddle LT Fender Shift
8	532126471	Clip Insulator .406 Mtg Hole
9	532151011	Dash P/L M, N/AMM N/HM Grey
10	872140608	Bolt Carriage 3/8-16 x 1
11	532146965	Panel Pnt Dash Lh
13	532146959	Panel Dash Rh Weldment
14	817490608	Screw Thdrol 3/8-16x1/2 Ty-tt
17	532149775	Hood LT/PL Husqvarna
20	532145210	Plate Mtg Battery Fuel tank 95
23	532124028	Bushing
24	874780616	Bolt Fin Hex 3/8-16unc X 1 Gr. 5
25	819131312	Washer 13/32 X 13/16 X 12 Ga
26	873800600	Nut Lock Hex W/Ins 3/8-16 Unc
28	532149776	Grille LT/PL Husqvarna
29	532149777	Lens LT/PL Husqvarna
30	532143050	Fender Pnt
31	532136619	Bracket Pnt Fender
33	532147203	Footrest Pnt Lh
34	532147202	Footrest Pnt Rh
35	872110606	Bolt Rdhd Sht Sqnk 3/8-16 X3/4
37	817490508	Screw Thdrol 6/16-18 x 1/2 TYT
38	532139886	Bracket, Asm. Pivot, L.H., Mower Rear
39	532139887	Bracket, Asm. Pivot, R.H., Mower Rear
48	532138096	Rivet Push Plate D Plastick Blk
49	817490412	Screw Hexwsh. Thdrol 1/4-20 x 3/4
50	532142779	Brace
51	873800400	Nut Lock Hex W/Ins 1/4-20
52	819091416	Washer 9/32 x 7/8 x 16 Ga.
53	532150067	Bracket Pnt. Pick off LT/PL Husq.
57	874780412	Bolt Hex 1/4-20 x 3/4
58	532150127	Air Duct P/L
60	872140606	Bolt Rdhd Sqnk 3/8-16 x 3/4
68	873510400	Nut Keps Hex 1/4-20
74	873680600	Nut Crownlock 3/8-16 UNC
129	819091016	Washer 9/32 x 5/8 x 16 Ga.
134	532150132	Rod Support Hood LT/PL Husq.
140	532150556	Bracket Chassis Front
--	532005479	Plug Button
--	532134014	Plug Dome Blk

NOTE: All component dimensions given in U.S. inches.
1 inch = 25.4 mm

REPAIR PARTS

TRACTOR - MODEL NO. LT130 (HCLT130B), PRODUCT NO. 954 88 00-01

DRIVE



REPAIR PARTS

TRACTOR - MODEL NO. LT130 (HCLT130B), PRODUCT NO. 954 88 00-01

IVE

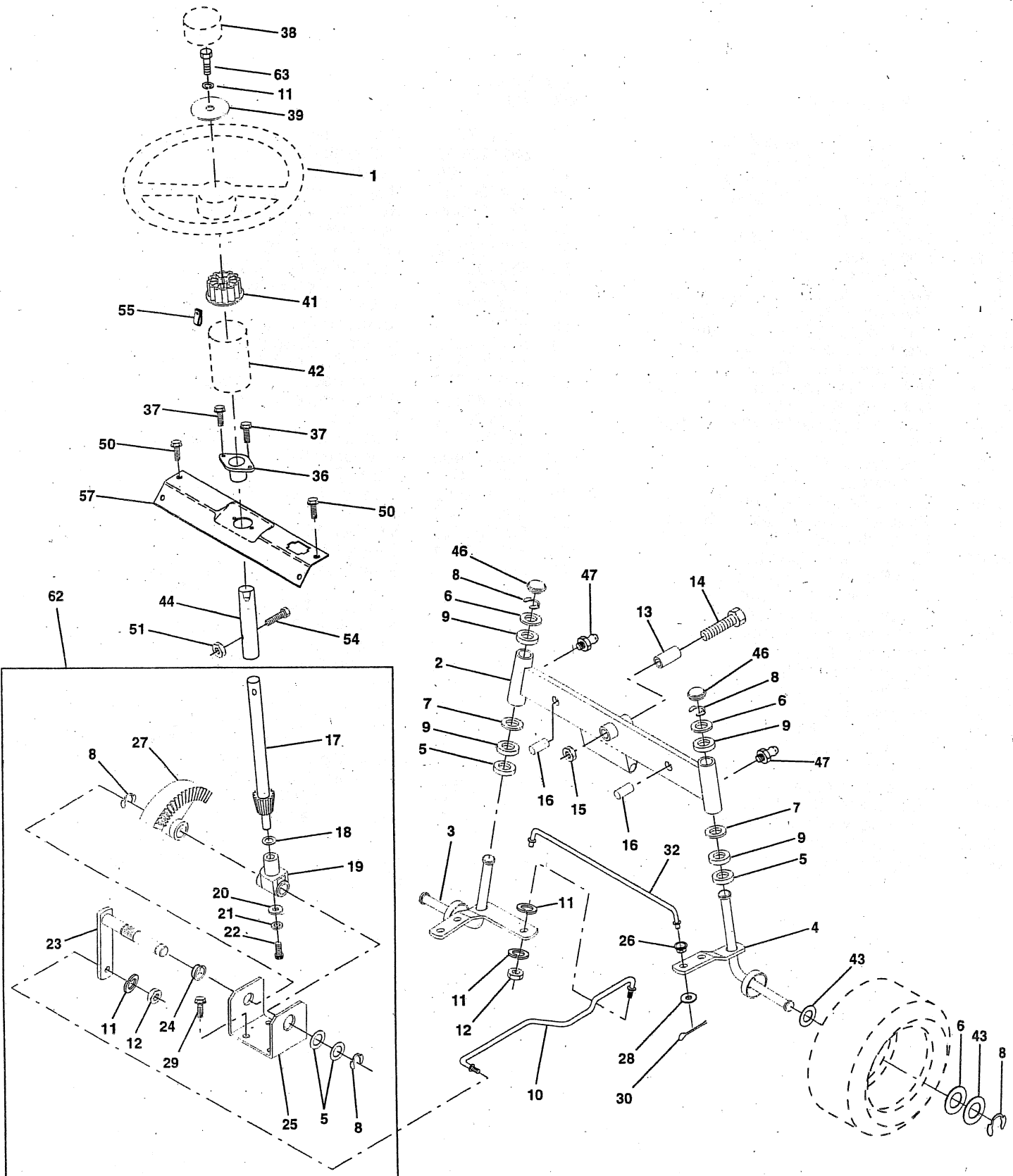
PART NO.	DESCRIPTION	KEY PART NO.	DESCRIPTION
532142603	Transaxle 6sp Dana 4360-79	47	532127783 Pulley Idler V Groove Plastic
532146682	Spring Return Brake T/a Zinc	48	532123789 Bellcrank Asm Clutch
532123666	Pulley Transaxle 18"tires	49	532123205 Retainer Belt Style Spring
812000028	Ring Retainer # 5100-62	50	874760624 Bolt Hex Hd 3/8-16unc X 1-1/2
532121520	Strap Torque	51	873680600 Nut Crownlock 3/8-16 Unc
817490512	Screw Thdrol 5/16-18 X 3/4 TYT	52	873680500 Nut Crownlock 5/16-18 Unc
532141003	Rod Shifter	53	532105710 Link Clutch 7 66
876020416	Pin Cotter 1/8 X 1 Cad	55	532105709 Spring Return Clutch 6 75
532105701	Washer Plate Shf 388 Sq Hole	56	874760620 Bolt Fin Hx 3/8-16 X 1/4
819151216	Washer 15/32 X 3/4 X 16 Ga	57	532130801 V-Belt Ground Drive 95 25 42"
874550412	Bolt 1/4-28 Unf Gr 8 W/Patch	58	532127274 Keeper Belt RH LT Pnt/zinc 16g
810040400	Washer Lock Hvy Helical 1/4	59	532140312 Keeper Belt Span Ctr
874490544	Bolt Hex 5/16-18Gr. 5	61	817490612 Screw Thdrol 3/8-16x3/4 Ty-tt
874780616	Bolt Fin Hex 3/8-16unc X 1 Gr. 5	62	532124872 Cover Pedal Blk Round
873800600	Nut Lock 3/8-16 Unc	63	532140186 Engine Pulley LT/YT
532121274	Knob Duckhead 1/2-13 Plstc Thds Blk	64	871170764 Bolt Hex
532130804	Rod Brake Blk Zinc 26 840	65	810040700 Washer Lock Hvy Hlcl Spr 7/16
873350600	Nut Hex Jam 3/8-16 Unc	66	532153400 Keeper Belt Engine
532106888	Spring Rod Brake 2 00 Zinc	70	532134683 Guide Belt Mower Drive RH
819131316	Washer 13/32 X 13/16 X 16 Ga	72	819132012 Washer 13/32 X 1-1/4 X 12 Ga
876020412	Pin Cotter 1/8 X 3/4 Cad	74	532109502 Spacer Split
532145204	Rod Brake Parking LT/YT	75	532121749 Washer 25/32 X 1 1/4 X 16 Ga
532071673	Cap Brake Parking Black	76	812000001 E-ring #5133-75
532130807	Bracket Mtg Transaxle	77	532123583 Key Square 2 0 X 1845/ 1865
532127275	Keeper Belt LH LT 14 Ga	78	532121748 Washer 25/32 X 1-5/8 X 16 Ga
874760512	Bolt Hex Hd 5/16-18unc X 3/4	80	532131488 Arm Shift Transaxle
532151128	Shaft Asm Pedal Foot	81	532136932 Shaft Asm Cross 20"t 42"deck
532120183	Bearing Nylon Blk 629 Id	82	532123782 Spring Torsion T/a
819211616	Washer 21/32 X 1 X 16 Ga	83	819171216 Washer 17/32 X 3/4 X 16 Ga
532124963	Pin Roll 3/16 X 1"	84	532132182 Rod Shift Adj Tie
532123674	Pulley Idler Flat	85	532150360 Nut Lock Center 1/4 - 28 Fnthd
874760644	Bolt Fin Hex 3/8-16unc X 2-3/4	86	532071208 Bushing Rod Strg 629/632 Id
532124965	Spacer Split 395 X 59 Bzp	87	819212016 Washer 21/32 X 1-1/4 X 16 Ga
532153399	Keeper Belt Idler	88	812000008 Ring Klip #5304-62
819131312	Washer 13/32 X 13/16 X 12 Ga	89	532139964 Console Shift 6sp LT
532105706	Bearing Nyl 503 X 628 X 1 25	90	532124346 Nut Self-thd Wsh-hd 1/4 Zinc
532110812	Washer Hardened	110	874760612 Bolt Fin Hex 3/8-16unc x 3/4
812000039	Ring Klip #t5304-50	116	872110610 Bolt Rdhd Sq Neck 3/8-16 x 1.25

NOTE: All component dimensions given in U.S. inches
1 inch = 25.4 mm

REPAIR PARTS

TRACTOR - MODEL NO. LT130 (HCLT130B), PRODUCT NO. 954 88 00-01

STEERING ASSEMBLY



REPAIR PARTS

TRACTOR - MODEL NO. LT130 (HCLT130B), PRODUCT NO. 954 88 00-01

STEERING ASSEMBLY

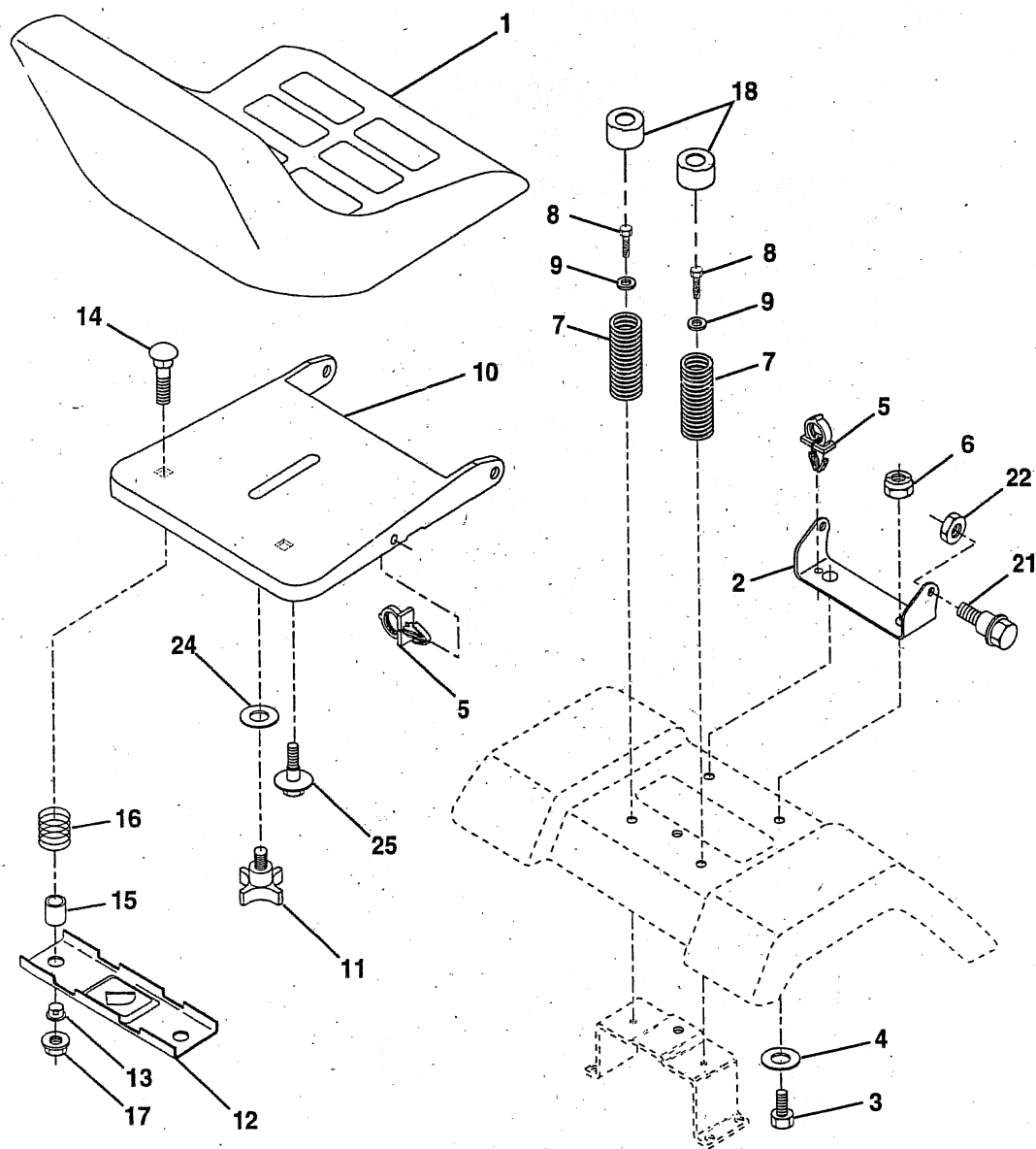
KEY NO.	PART NO.	DESCRIPTION
1	532124415	Wheel Steering Auto Grey
2	532142033	Axle Asm Fr LT W/gzks 38/42
3	532135227	Spindle Asm LH
4	532135228	Spindle Asm RH
5	532124931	Bearing Race Thrust Harden
6	532121748	Washer 25/32 X 1-5/8 X 16 Ga
7	819272016	Washer 27/32 X 1-1/4 X 16 Ga
8	812000029	Ring Klip #t5304-75
9	532124937	Bearing Col Strg Blk
10	532130468	Link Drag Sol Ball Jt 20 064
11	810040600	Washer Lock Hvy Hlcl Spr 3/8
12	873610600	Nut Fin Hex 3/8-24 Unf
13	532110438	Spacer Bearing Axle Front
14	874011056	Bolt Hex 5/8-11 Unc X 3-1/2
15	873901000	Nut Lock Flange 5/8-11 Unc
16	532132624	Pin Axle 5/8 X 1 55/1 54 Lg
17	532140176	Shaft Asm Strg Private Label
18	532057079	Washer Thrust 515x 750x 033
19	532124035	Support Shaft
20	532126684	Washer Shim 1/4 X 5/8 X 062
21	810040400	Washer Lock Hvy Helical 1/4
22	871100410	Screw Cap Sckt. Hd Phos & Oil
23	532127501	Shaft Asm Pittman
24	532109816	Nyliner Snap In
25	532124036	Bracket Steering
26	543126847	Bushing Link Drag Blk LR
27	532136874	Gear Sector
28	819131416	Washer 13/32 X 7/8 X 16 Ga
29	817490612	Screw Thdrol 3/8-16x3/4 Ty-tt
30	876020412	Pin Cotter 1/8 X 3/4 Cad
32	532130465	Rod Tie Wire Form 19 75 Mech
36	532102803	Bushing Strg
37	532152927	Screw
38	532124416	Insert Cap Strg Wh Au
39	819133808	Washer 13/32 X 2-3/8 X 8 Ga
41	532100711	Adaptor Wheel Strg
42	532150390	Boot Steering Shaft
43	532121749	Washer 25/32 X 1 1/4 X 16 Ga
44	532153721	Extention Steering Adjustable
46	532121232	Cap Spindle Fr Top Blk
47	532124836	Fitting Grease
50	817490412	Screw Hex Wsh Thdrol 1/4-20 x 3/4
51	873800500	Nut Lock Hex w/Ins 5/16-18
54	874780520	Bolt Fin Hex 5/16-18 Unc x 1-1/4
55	532140285	Clip Tinnerman
57	532140172	Support Shaft Steering
62	532149686	Kit, Steering Assembly
63	874780616	Bolt Fin Hex 3/8-16unc x 1 Gr. 5

NOTE: All component dimensions given in U.S. inches.
1 inch = 25.4 mm.

REPAIR PARTS

TRACTOR - MODEL NO. LT130 (HCLT130B), PRODUCT NO. 954 88 00-01

SEAT ASSEMBLY



KEY PART NO. NO.

DESCRIPTION

1	532140838	Seat V250
2	532140551	Bracket Pivot Seat 8 720
3	874760616	Bolt Fin Hex 3/8-16unc X 1
4	819131610	Washer 13/32 X 1 X 10 Ga
5	532145006	Clip Push-In
6	873800600	Nut Hex w/Ins. 3/8-16 Unc
7	532124181	Spring Seat Cprsn 2 250 Blk Zi
8	817490616	Screw Thdrol 3/8-16 X 1 Ty-tt
9	819131614	Washer 13/32 X 1 X 14 Ga.
10	532140552	Pan Seat
11	532120068	Knob seat 1/2-13 Unc
12	532121246	Bracket Mounting Switch

KEY PART NO. NO.

DESCRIPTION

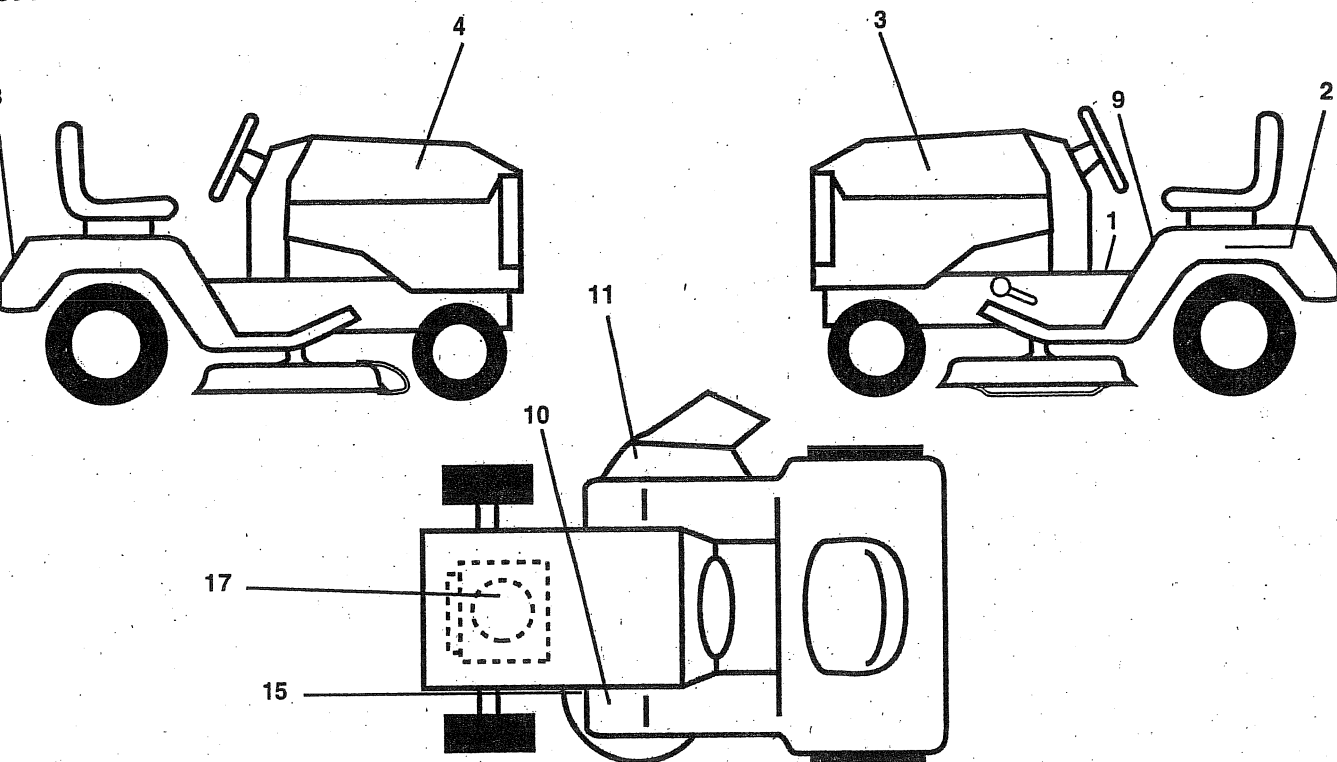
13	532121248	Bushing Snap Blk Nyl 50 Id
14	872050411	Bolt Rdhd Sht Nk 1/4-20x1-3/8
15	532134300	Spacer Split 28x 96 Yel Zinc
16	532121250	Spring Cprsn 1 27 Blk Pnt
17	532123976	Nut Lock 1/4 Lge Flg Gr 5 Zinc
18	532124238	Cap Spring Seat
21	532153236	Bolt Shoulder 5/16-18 Unc -2A
22	873800500	Nut Hex Lock W/Ins 5/16-18
24	819171912	Washer 17/32 X 1-3/16 X 12 Ga.
25	532127018	Bolt Shoulder 5/16-18 X 62

NOTE: All component dimensions given in U.S. inches.
1 inch = 25.4 mm

REPAIR PARTS

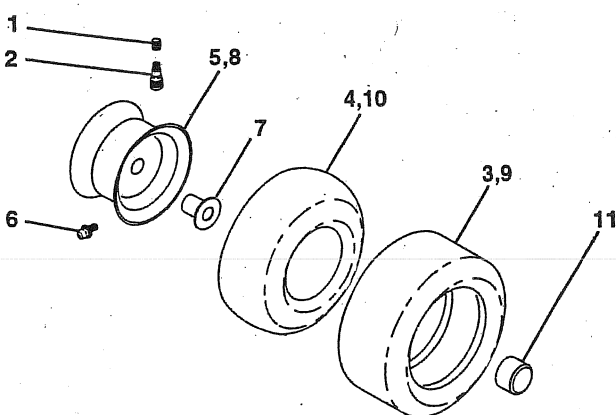
TRACTOR - MODEL NO. LT130 (HCLT130B), PRODUCT NO. 954 88 00-01

CALS



PART NO.	DESCRIPTION	KEY NO.	PART NO.	DESCRIPTION
532140820	Decal Instruction Dash Eng/fr	--	532145246	Pad FTREST RBR SQ Generic 95
532146451	Decal Bat Dan/Poi P/L Sym	--	532138311	Decal Handle Lft Height Adjust
532150724	Decal Hood LH	--	532154602	Manual Owner's (English)
532150723	Decal Hood RH	--	532154603	Manual Owner's (French)
532150617	Decal Fender Logo	Available accessories not included with tractor:		
532133795	Decal Caution Fender Eng/fr			
532101892	Decal Clutch/brake Eng/fr			
532137259	Decal Warning Multi-Language			
532136832	Decal V-Belt Schematic			
532273212	Decal HP Engine	--	LBD48	42" Snow Blade
532145247	Fastener Pop In Footrest (8per)	--	LSB42	40" Snow Thrower
		--	LC05	33lb. Wheel Wts. (Pair)
		--	CH12	Tire Chains (18 x 8.5 x 8)
		--	MP42	Mulcher Plate Kit 42"

HEELS & TIRES

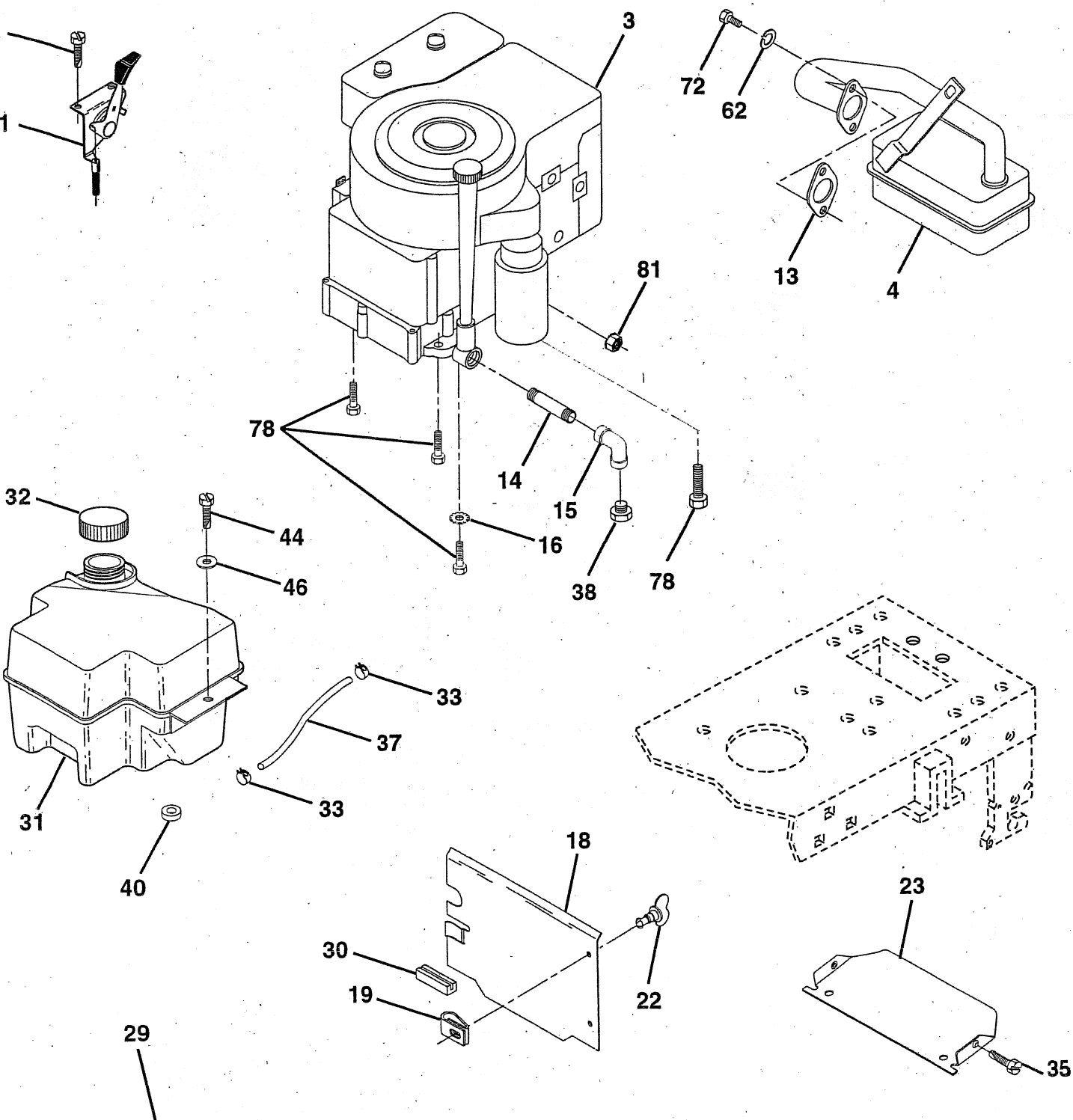


KEY NO.	PART NO.	DESCRIPTION
1	532059192	Cap Valve Tire
2	532065139	Stem Valve
3	532106222	Tire F Ts 15 X 6 0 - 6 Service
4	532059904	Tube Front (Service Item Only)
5	532138336	Rim Asm 6"front Silver Service
6	532124957	Fitting Grease (Front Wheel Only)
7	532124959	Bearing Flange (Front Wheel Only)
8	532138337	Rim Asm 8"rear Silver Service
9	532124635	Tire R Ts 18x8 5-8 C Service
10	532124926	Tube Rear (Service Item Only)
11	532104757	Cap Axle Blk 1 50 X 1 00
--	532144334	Sealant, Tire (10 oz. Tube)

NOTE: All component dimensions given in U.S. inches
1 inch = 25.4 mm

REPAIR PARTS

TRACTOR - MODEL NO. LT130 (HCLT130B), PRODUCT NO. 954 88 00-01
ENGINE



OPTIONAL EQUIPMENT
Spark Arrester

REPAIR PARTS

TRACTOR - MODEL NO. LT130 (HCLT130B), PRODUCT NO. 954 88 00-01

ENGINE

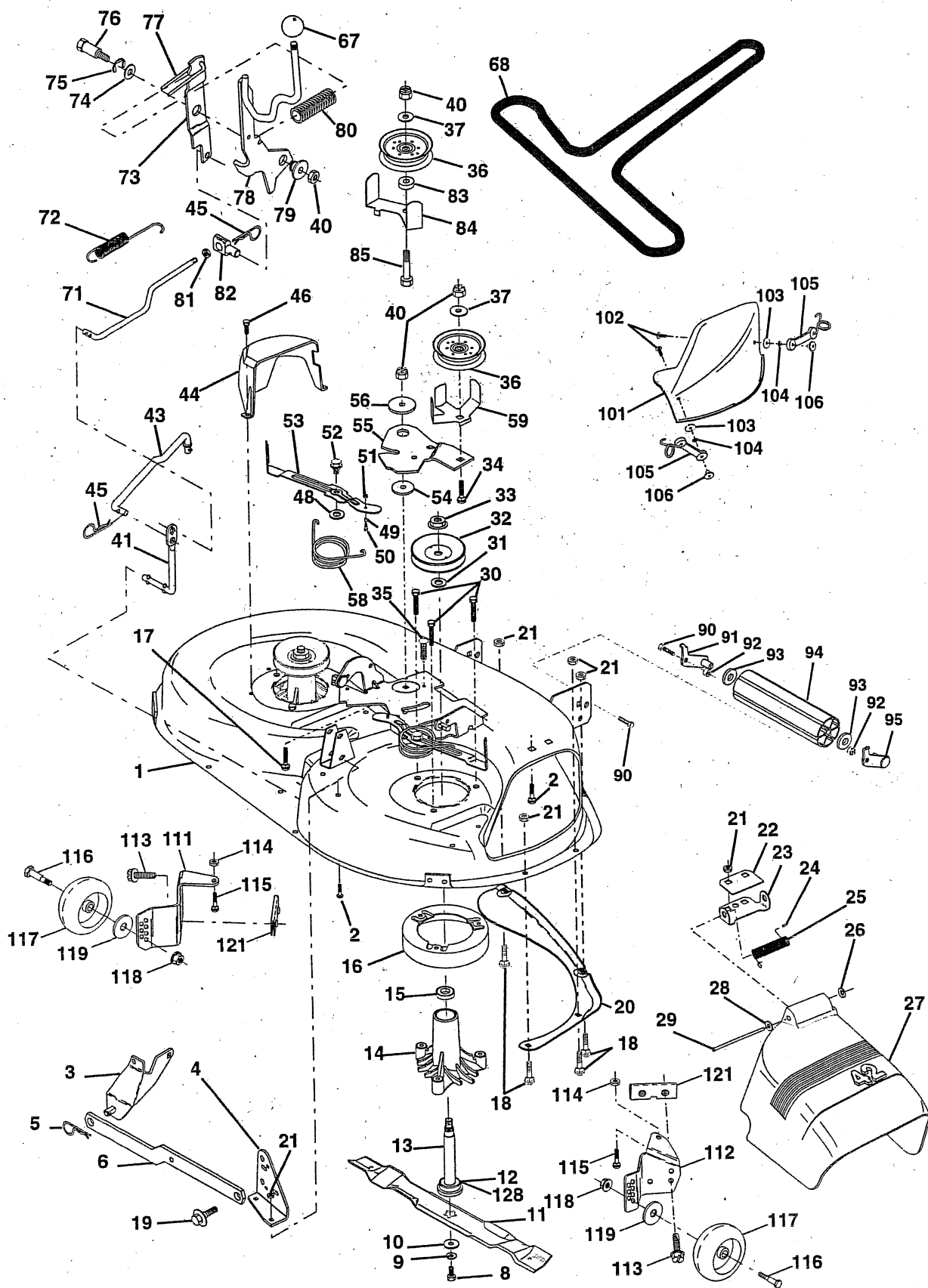
KEY NO.	PART NO.	DESCRIPTION
1	532140310	Control Th/ch 23 5 LH Flag
2	817720410	Screw Hex Thd Cut 1/4-20x5/8 T
3	-----	Engine B&S 13 DIAM P/S Model No. 28M707
4	532137348	Muffler LT B&S 12/12.5/13HP
13	532272293	Gasket Eng 1 313 Id Tin Plated
14	813280324	Nipple Pipe 3/8 Npt X 3"
15	813200300	Elbow Std 90 Degree 3/8-18 Npt
16	811050600	Washer Lock Ext Tooth 3/8
18	532136718	Shield Heat Lt
19	532105839	Receptacle 1/4 turn
22	532149793	Stud 1/4 turn W/Bushing Plst
23	532150554	Shield Browning
29	532137180	Kit Spark Arrestor (Flat Scrn)
30	532127057	Pinch Weld Hood Black
31	532140280	Tank Fuel Front 2 00
32	532140527	Cap Asm Fuel W/sym Vented
33	532123487	Clamp Hose Black
35	817490512	Screw Thdrol 5/16-18 x 3/4
37	532137040	Line Fuel 20"
38	-----	Plug Oil Drain (Order From Engine Manufacturer)
40	532124028	Bushing Snap Nyl Blk Fuel Line
44	817490412	Screw Hexwsh Thdrol 1/4-20x3/4
46	819091416	Washer 9/32 X 7/8 X 16 Ga
62	810040500	Washer Lock Hvy Hlcl Spr 5/16
72	871070512	Screw Hexhd Cap 5/16-18x 3/4
78	817490620	Screw Thdrol 3/8-16x1-1/4 TYTT
81	532128861	Nut Flange 1/4-20 Starter Nut

NOTE: All component dimensions given in U.S. inches
1 inch = 25.4 mm

REPAIR PARTS

TRACTOR - MODEL NO. LT130 (HCLT130B), PRODUCT NO. 954 88 00-01

MOWER DECK



REPAIR PARTS

TRACTOR - MODEL NO. LT130 (HCLT130B), PRODUCT NO. 954 88 00-01

MOWER DECK

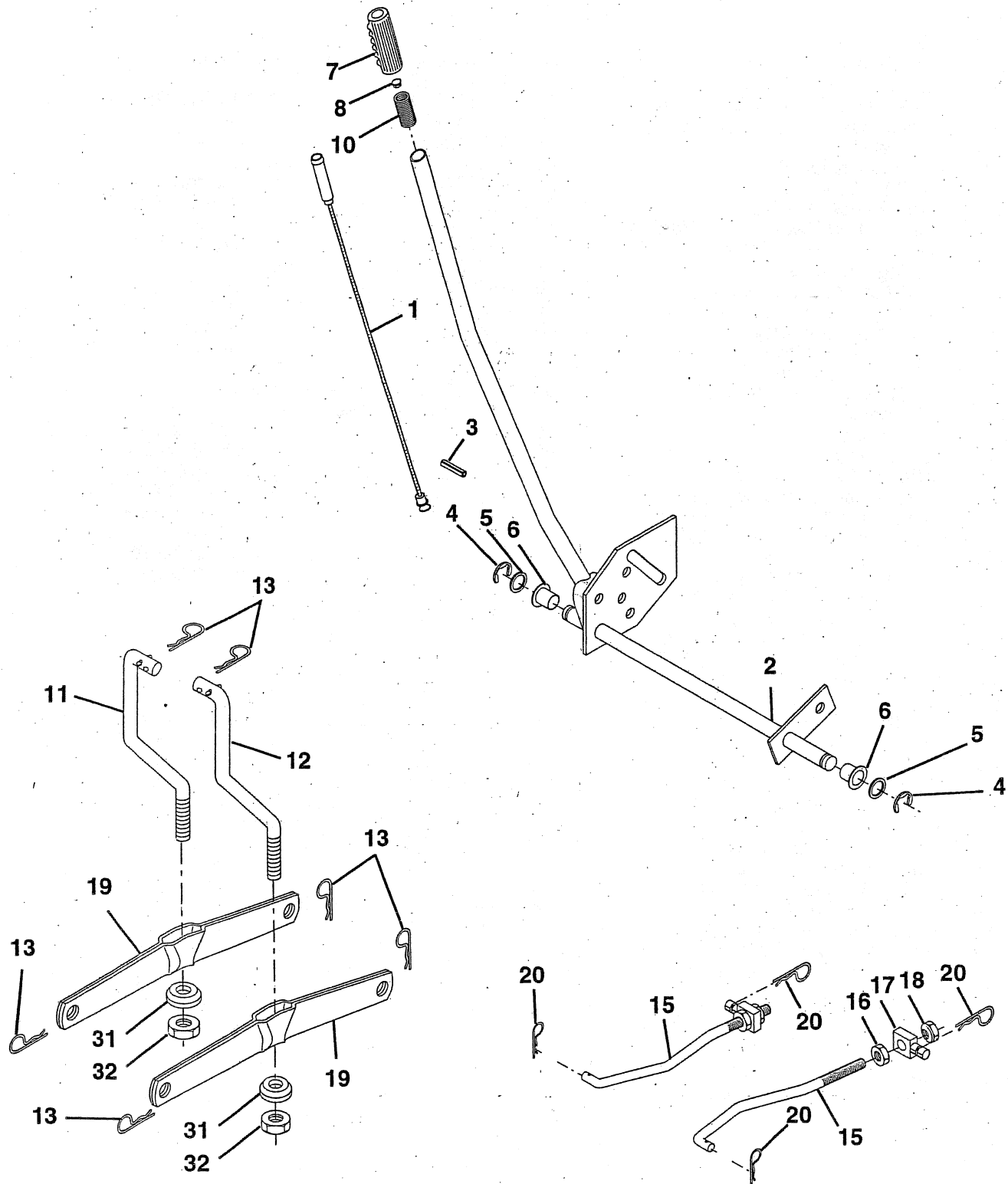
KEY NO.	PART NO.	DESCRIPTION	KEY NO.	PART NO.	DESCRIPTION
1	532144393	Deck Asm MWR 42"weldment	58	532140086	Spring Torsion Brakes
2	872140506	Bolt Rdhd Sqnk 5/16-18unc X3/4	59	532141043	Guard TUV Idler
3	532138017	Bracket Asm Fr Sway Bar 38/42	67	532106933	Knob Rd 1/2-13 Plstc Thds Blk
4	532138440	Bracket Asm Deck 42"sway Bar	68	532144200	V-Belt Mower 42"
5	532124670	Retainer Spring	71	532142427	Rod Clutch Primary 38/42
6	532130832	Arm Suspension Rear	72	532131870	Spring Return
8	532850857	Bolt 3/8 - 24 X 1.25 Gr 8	73	532127847	Arm Clutch Secondary
9	810030600	Washer Lock Hvy 3/8	74	532121748	Washer 25/32 X 1-5/8 X 16 Ga
10	532140296	Washer Hard Blade Mower Vented	75	812000029	Ring Klip #t5304-75
11	532134149	Blade Mower Mulching 42"	76	532128903	Bolt Shoulder 3/8-16 Unc 1 44
12	532129895	Bearing Ball #6024 (Mandrel)	77	532127845	Keeper Spring 4 000
13	532137645	Shaft Asm W/lower Bearing	78	532140179	Arm Asm Clutch Primary
14	532128774	Housing Mandrel Vented	79	532127498	Bushing 747 Od X 794 Lg Brass
15	532110485	Bearing Ball Mandrel	80	532153701	Spring Clutch Mower
16	532140329	Stripper Mower Vented	81	873350600	Nut Hex Jam 3/8-16
17	872110610	Bolt Rdhd Sqnk 3/8-16 X 1-1/4	82	532142028	Trunnion Adj 94
18	872140505	Bolt Rdhd Sqnk 5/16-18 X 5/8	83	532120958	Washer Sintered
19	532132827	Bolt Shoulder	84	532144394	Keeper Belt Idler Fixed
20	532136888	Baffle Vortex 42	85	872140618	Bolt Carriage 3/8-16 x 2-1/4 Gr.5
21	873680500	Nut, Crownlock 5/16-18 UNC	90	874760616	Bolt Fin Hex 3/8-16 UNC x 1
22	532134753	Stiffener Bracket 42"deck	91	532132274	Bracket Asm Noseroller LH
23	532131267	Bracket Deflector Mower 42"	92	873800600	Nut Lock Hex W/lhs 3/8-16 Unc
24	532105304	Cap Sleeve 80x 112 Blk Mower	93	819171416	Washer 17/32 x 7/8 x 16 Ga.
25	532123713	Spring Torsion Deflector 2 52	94	532132264	Roller Nose 38 & 42
26	532110452	Nut Push Phos & Oil	95	532132273	Bracket Asm Noseroller RH
27	532130968	Shield Deflector Mower 42" Blk	101	532136420	Cover Mulching 42" Black
28	819111016	Washer 11/32 X 5/8 X 16 Ga	102	871161010	Screw
29	532131491	Rod Hinge 42"6 75 Wlg	103	819061216	Washer #10
30	532138776	Screw Thdrol Hex Head Zinc Mwr	104	810071000	Washer Lock #10
31	532129963	Washer Spacer Mower Vented	105	532130758	Latch Asm Bagger
32	532153535	Pulley Mandrel 42/44/50	106	532125004	Nut Weld
33	532137266	Nut 9/16 Toplock Flng Oil Dip	111	532140353	Bracket Wheel Gauge LH 42" Deck
34	872110614	Bolt Rdhd 3/8-16uncx1-3/4 Gr5	112	532132262	Bracket Gauge Wheel RH 42" Deck
35	532133835	Fastner Christmas Tree	113	817490512	Screw Thdrol 5/16-18 X 3/4
36	532131494	Pulley Idler Flat 3 060	114	873510500	Nut Keps 5/16-18 UNC
37	819131316	Washer 13/32 X 13/16 X 16	115	872110504	Bolt Carriage 5/16-UNC x 1/2
40	873680600	Nut Crownlock 3/8-16 UNC	116	532124842	Bolt Shoulder "A" 2.41 "B" 1.66
41	532133551	Rod Pivot W/nibs	117	532133957	Wheel Guage
43	532140083	Rod Clutch Secondary W/nibs	118	873930600	Nut Centerlock 3/8-16 UNC
44	532140088	Guard Mandrel LH Black	119	819121414	Washer 3/8 x 7/8 x 14 Ga.
45	532124788	Spring Retainer 1" Zinc/cad	121	532143723	Bracket Extruded Guage Wheel
46	532137729	Screw Hex Thd Cut 1/4-20x5/8 T	128	532153390	Washer Felt
48	532133944	Washer Hardened Smaller	--	532130794	Mandrel Asm Service (Includes Key
49	532133940	Roller Asm Cam Follower 42"dec	--	532145411	Nos. 8-10, 12-15, 31 and 33)
50	532131340	Bolt Shldr 10-24 Zinc Gr 5 42"			Deck Serv 42"mch S Bar Mult-Lang
51	532069180	Nut Lock #10-24 Unc			(Standard Deck - Order noseroller,
52	532139888	Bolt Shoulder 5/16-18 Unc Blkz			mulch cover and gauge wheel
53	532131845	Arm Asm Pad Brake			components separately Key Nos.
54	532133943	Washer Hardened			90-95, 101-106 and 111-119,121)
55	532140084	Arm Idler 42"mower LT/YT			
56	532122052	Spacer Retainer Pm Mower			

NOTE: All component dimensions given in U.S. inches
1 inch = 25.4 mm

REPAIR PARTS

TRACTOR - MODEL NO. LT130 (HCLT130B), PRODUCT NO. 954 88 00-01

MOWER LIFT



REPAIR PARTS

TRACTOR - MODEL NO. LT130 (HCLT130B), PRODUCT NO. 954 88 00-01

MOWER LIFT

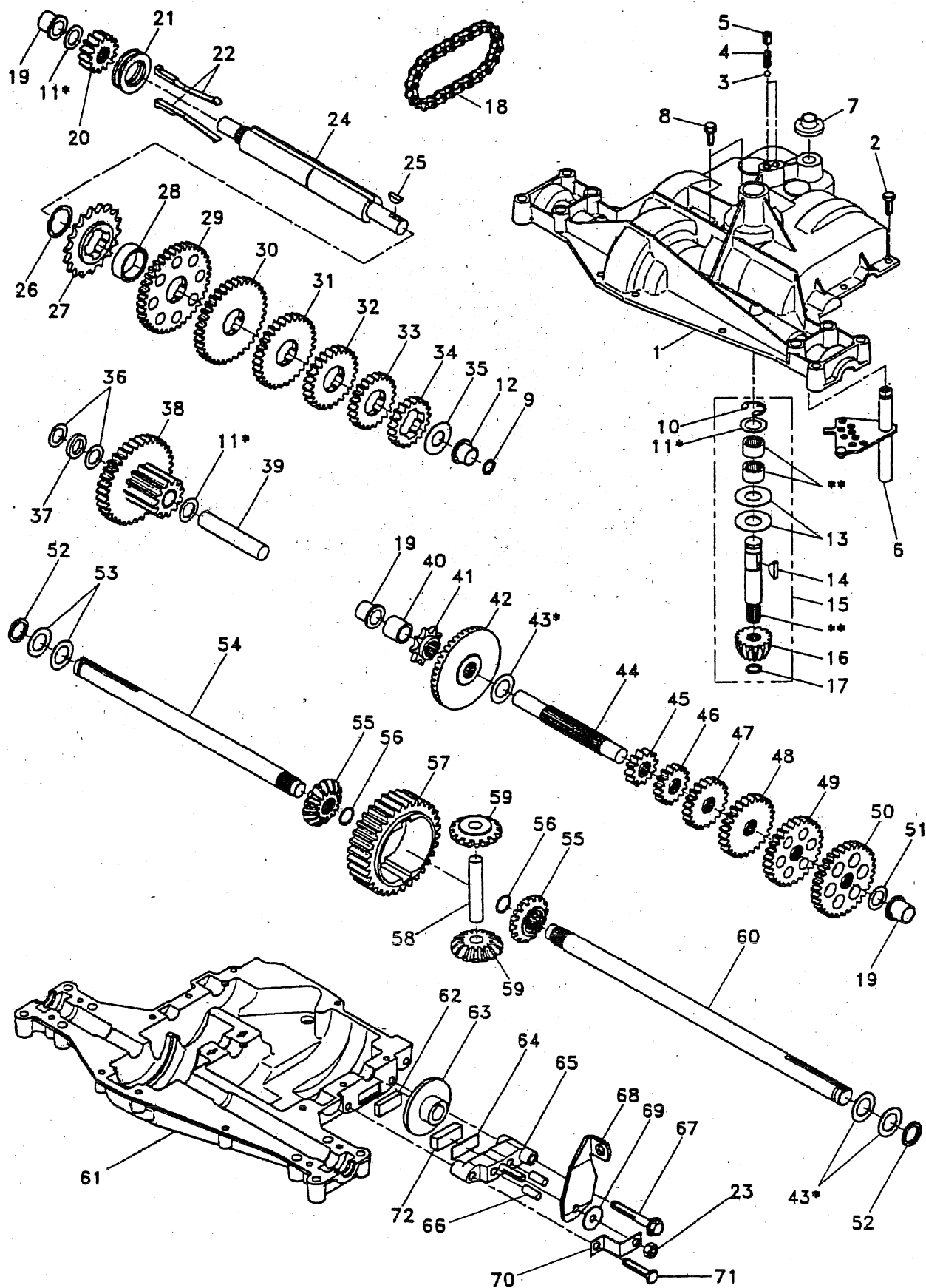
KEY NO.	PART NO.	DESCRIPTION
1	532136973	Wire Asm Inner W/plunger 17 32
2	532150588	Shaft Asm Lift
3	532138284	Pin Groove
4	812000002	E Ring #5133-62
5	819211621	Washer PLTD 21/32 X 1 X 21ga
6	532120183	Bearing Nylon Blk 629 Id
7	532109413	Grip Handle Bicycle Matte Blk
8	532124526	Button Plunger Black
10	532122512	Spring Cprsn 3 750 Oiled
11	532139865	Link Lift LH
12	532139866	Link Lift RH
13	532124670	Retainer Spring
15	532127218	Link Front
16	873350800	Nut Jam Hex 1/2-13 Unc
17	532130171	Trunnion Blk Zinc
18	873800800	Nut Lock W/wsh 1/2-13unc
19	532139868	Arm Suspension Rear
20	532124660	Spring, Retainer
31	532140302	Bearing Pvt. Lift Spherical
32	873540600	Nut Crownlock 3/8-24

NOTE: All component dimensions given in U.S. inches
1 inch = 25.4 mm

REPAIR PARTS

TRACTOR - MODEL NO. LT130 (HCLT130B), PRODUCT NO. 954 88 00-01

DANA TRANSAXLE - MODEL NUMBER 4360-79



REPAIR PARTS

TRACTOR - MODEL NO. LT130 (HCLT130B), PRODUCT NO. 954 88 00-01

DANA TRANSAXLE - MODEL NUMBER 4360-79

KEY PART NO. NO.

DESCRIPTION

1	532142671	Housing, Upper
2	532002274	Screw, Self-Tapping, Large 1/4-20 x .734
3	532134400	Ball, Detent
4	532105904	Spring, Detent
5	532105905	Screw, Set
6	532138235	Kit, Shifter Assembly
7	532134399	Boot, Shifter
8	532134791	Screw, Self-Tapping, with Sealer
9	532138241	Square Ring
10	532142672	Ring, Retaining
11	532134793	* Assembly, Kit, Shim .625 Shaft
12	532142673	Bearing, Flange
13	532120415	Washer, Plain .632 x 1.38 x .046
14	532142674	Key, Woodruff, #9
15	532138234	Assembly, Kit, Input Shaft
16	532110078	Pinion, Bevel, 14 Teeth
17	532105909	Ring, Retaining
18	532105910	Chain, 24 Pitches
19	532105911	Bearing, Flange
20	532142675	Gear, Spur, 14 Teeth
21	532138246	Collar, Clutch
22	532138236	Assembly, Kit, Clutch Keys
23	873810500	Locknut 5/16-24
24	532142676	Shaft, Intermediate
25	532002244	Key, Woodruff, #61
26	532105916	Ring, Retaining
27	532120470	Sprocket, 18 Teeth (Reverse)
28	532110070	Spacer
29	532142677	Gear, Spur, 37 Teeth (1 st)
30	532142681	Gear, Spur, 35 Teeth (2 nd)
31	532120405	Gear, Spur, 30 Teeth (3 rd)
32	532108980	Gear, Spur, 25 Teeth (4 th)
33	532120406	Gear, Spur, 22 Teeth (5 th)
34	532134796	Gear, Spur, 19 Teeth (6 th)
35	532105925	Washer, Plain .640 x 1.37 x .061
36	532002232	Washer, Plain .632 x 1.00 x .026
37	532108978	Spacer .630 x 1.00 x .169
38	532110079	Assembly, Gear, Combination of 12 Teeth and 35 Teeth
39	532124639	Shaft, Idler
40	532120472	Spacer .635 x .875 x .755

KEY PART NO. NO.

DESCRIPTION

41	532105928	Sprocket, 9 Teeth (Reverse)
42	532110084	Gear, Bevel, 42 Teeth
43	532134394	* Assembly, Kit, Shim .750 Shaft
44	532120473	Shaft, Drive
45	532142678	Gear, Spur, 12 Teeth (1 st)
46	532142679	Gear, Spur, 15 Teeth (2 nd)
47	532120407	Gear, Spur, 20 Teeth (3 rd)
48	532106589	Gear, Spur, 25 Teeth (4 th)
49	532120408	Gear, Spur, 28 Teeth (5 th)
50	532105937	Gear, Spur, 31 Teeth (6 th)
51	532002226	Washer, Plain .632 x 1.00 x .060
52	532134401	Washer, Neoprene
53	532002264	Washer, Plain .758 x 1.25 x .031
54	532120474	Axle, L.H.
55	532110081	Gear, Miter, 15 Teeth
56	532105941	Ring, Retaining
57	532110071	Gear, Spur, 32 Teeth
58	532120952	Shaft, Cross
59	532110082	Gear, Miter, 15 Teeth
60	532123908	Axle, R.H.
61	532142680	Housing, Lower
62	532120961	Puck, Friction
63	532007294	Disc, Brake
64	532108989	Spacer
65	532120953	Jaw, Brake
66	532120954	Pin, Dowel
67	532134799	Screw, Self-Tapping, Large 5/16-18 x 2.25
68	532138244	Lever, Actuating
69	532108996	Washer, Plain .321 x 1.00 x .055
70	532120956	Bracket, Anti-Rotation
71	532106596	Screw, Self-Tapping, Large 5/16-18 x 1.44
72	532120951	Puck, Friction
73	532120416	Grease

* Use in combinations to maintain proper clearances

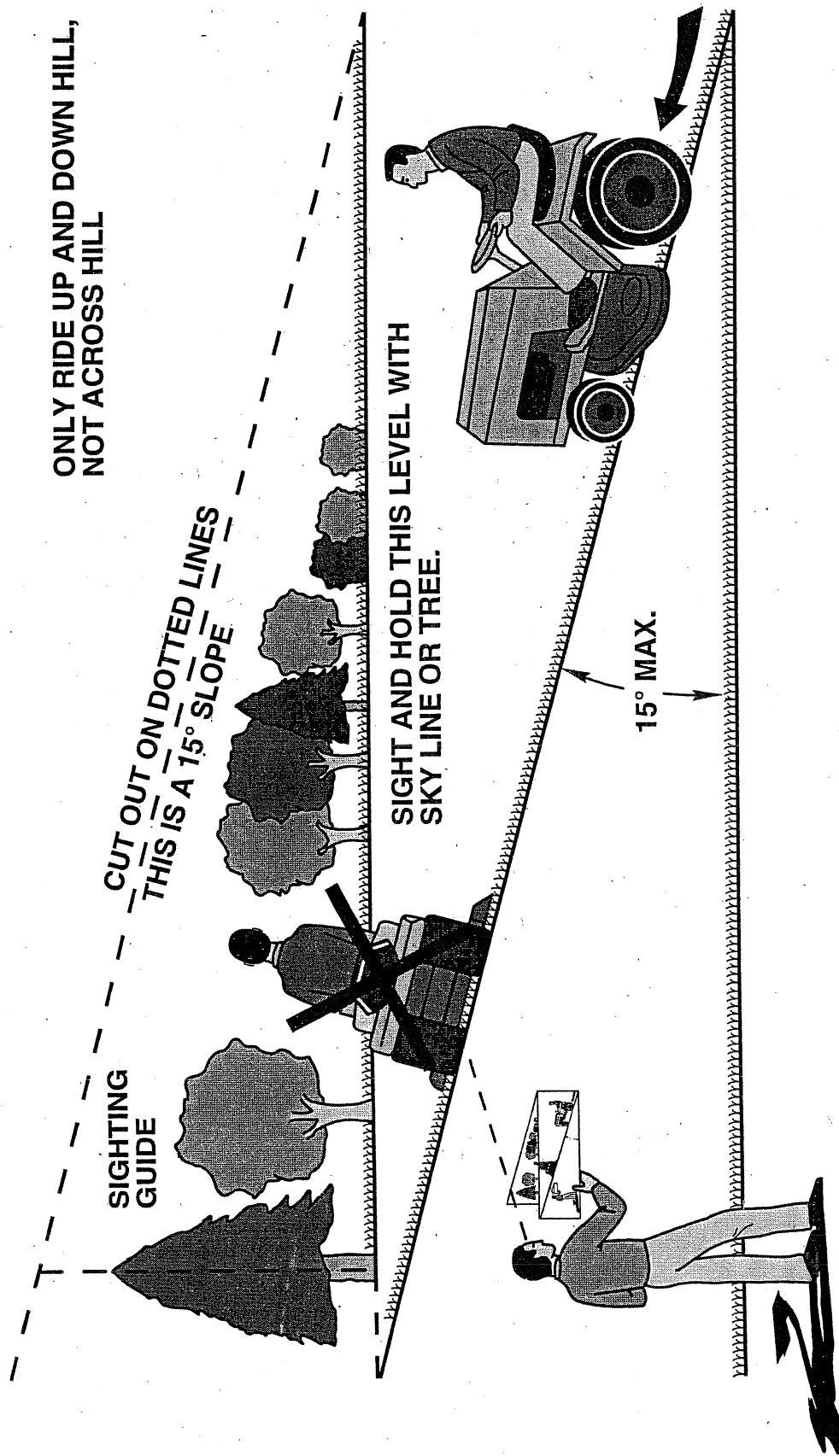
** Order Key No. 15

NOTE: All component dimensions given in U.S. inches
1 inch = 25.4 mm

SERVICE NOTES

SERVICE NOTES

SUGGESTED GUIDE FOR SIGHTING SLOPES FOR SAFE OPERATION



Operate your Tractor up and down the face of slopes (not greater than 15°), never across the face. Make turns gradually to prevent tipping or loss of control. Exercise extreme caution when changing direction on slopes.



Husqvarna

WARRANTY STATEMENT

SECTION 1: LIMITED WARRANTY

Husqvarna Forest & Garden Company ("Husqvarna") warrants Husqvarna product to the original purchaser to be free from defects in material and workmanship from the date of purchase for the "Warranty Period" of the product as set forth below:

Lifetime Warranty: All tiller tines, trimmer shafts, ignition coils and modules on hand held product.

2 Year Warranty: Riding lawn mowers, yard and garden tractors, walk behind mowers, tillers, trimmers, brushcutters, snow blowers, handheld blowers, hedge trimmers, and electrical products for noncommercial, nonprofessional, noninstitutional or nonincome producing use, except as herein stated.

Emission control system components necessary to comply with CARB-95 and EPA regulations, except for those components which are part of engine systems manufactured by third party engine manufacturers for which the purchaser has received a separate warranty with product information supplied at time of purchase.

1 Year Warranty: Chain saws, clearing saws and backpack blowers for noncommercial, nonprofessional, noninstitutional or nonincome producing use. Trimmer models 120, 125, 122, 132, 225, 232 and 235 used for commercial purposes.

90 Day Warranty: Any Husqvarna product used for rental, commercial, institutional, professional or income producing use except as otherwise provided herein.

30 Day Warranty: Husqvarna bow guide and replacement parts.

SECTION 2: HUSQVARNA'S OBLIGATIONS UNDER THE WARRANTY

Husqvarna will repair or replace defective components without charge for parts or labor if a component fails because of a defect in material or workmanship during the warranty period.

SECTION 3: ITEMS NOT COVERED BY THIS WARRANTY

The following items are not covered by this warranty:

- (1) Normal customer maintenance items which become worn through normal regular use, including, but not limited to, belts, blades, blade adapters, bulbs, filters, guide bars, lubricants, rewind springs, saw chain, spark plugs, starter ropes and tines;
- (2) Natural discoloration of material due to ultraviolet light;
- (3) Engine and drive systems not manufactured by Husqvarna; these items are covered by the respective manufacturer's warranty as provided in writing with the product information supplied at the time of purchase; all claims must be sent to the appropriate manufacturer;
- (4) Lawn and garden attachments are covered by a third party which gives a warranty, all claims for warranty should be sent to the manufacturer; and
- (5) Emission Control System components necessary to comply with CARB-95 and EPA regulations which are manufactured by third party engine manufacturer.

SECTION 4: EXCEPTIONS AND LIMITATIONS

This warranty shall be inapplicable to defects resulting from the following:

- (1) Accident, abuse, misuse, negligence and neglect, including stale fuel, dirt, abrasives, moisture, rust, corrosion, or any adverse reaction due to incorrect storage or use habits;

- (2) Failure to operate or maintain the unit in accordance with the Owner's/Operator's manual or instruction sheet furnished by Husqvarna;
- (3) Alterations or modifications that change the intended use of the product or affects the product's performance, operation, safety, or durability, or causes the product to fail to comply with any applicable laws; or;
- (4) Additional damage to parts or components due to continued use occurring after any of the above.

REPAIR OR REPLACEMENT AS PROVIDED UNDER THIS WARRANTY IS THE EXCLUSIVE REMEDY OF THE PURCHASER. HUSQVARNA SHALL NOT BE LIABLE FOR ANY INCIDENTAL OR CONSEQUENTIAL DAMAGES FOR BREACH OF ANY EXPRESS OR IMPLIED WARRANTY ON THESE PRODUCTS EXCEPT TO THE EXTENT PROHIBITED BY APPLICABLE LAW. ANY IMPLIED WARRANTY OF MERCHANTABILITY OR FITNESS FOR A PARTICULAR PURPOSE ON THESE PRODUCTS IS LIMITED IN DURATION TO THE WARRANTY PERIOD AS DEFINED IN THE LIMITED WARRANTY STATEMENT. HUSQVARNA RESERVES THE RIGHT TO CHANGE OR IMPROVE THE DESIGN OF THE PRODUCT WITHOUT NOTICE, AND DOES NOT ASSUME OBLIGATION TO UPDATE PREVIOUSLY MANUFACTURED PRODUCTS.

Some states do not allow the exclusion of incidental or consequential damages, or limitations on how long an implied warranty lasts, so the above limitations or exclusions may not apply to you. This warranty gives you specific legal rights, and you may also have other rights which vary from state to state.

SECTION 5: CUSTOMER RESPONSIBILITIES

The product must exhibit reasonable care, maintenance, operation, storage and general upkeep as written in the maintenance section of the Owner's/Operator's manual. Should an operational problem or failure occur, the product should not be used, but delivered as is to an authorized Husqvarna dealer for evaluation. Proof of purchase, as explained in section 6, rests solely with the customer.

SECTION 6: PROCEDURE TO OBTAIN WARRANTY CONSIDERATION

It is the Owner's and Dealer's responsibility to make certain that the Warranty Registration Card is properly filled out and mailed to Husqvarna Forest & Garden Company. This card should be mailed within ten (10) days from the date of purchase in order to confirm the warranty and to facilitate post-sale service.

Proof of purchase must be presented to the authorized Husqvarna dealer in order to obtain warranty service. This proof must include date purchased, model number, serial number, and complete name and address of the selling dealer.

To obtain the benefit of this warranty, the product believed to be defective must be delivered to an authorized Husqvarna dealer in a timely manner, no later than thirty (30) days from date of the operational problem or failure. The product must be delivered at the owner's expense. Pick-up and delivery charges are not covered by this warranty. An authorized Husqvarna dealer can be normally located through the "Yellow Pages" of the local telephone directory or by calling 1-800-HUSKY62 for a dealer in your area.

HUSQVARNA FOREST & GARDEN COMPANY
9006-J PERIMETER WOODS DRIVE
CHARLOTTE, NC 28216

