

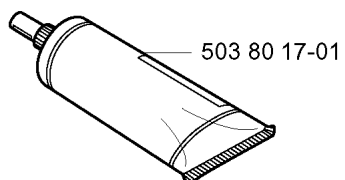
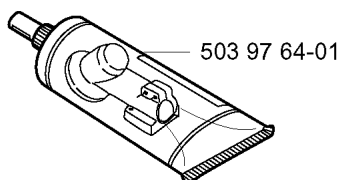
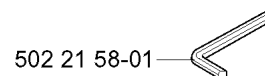
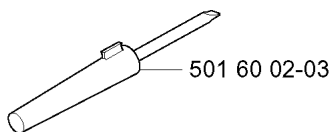
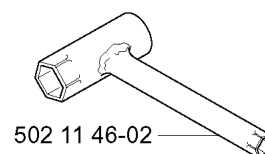
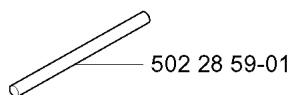


SPARE PARTS LIST

TRIMMERS/EDGERS

322 E, 2001-01

N Accessories
Zubehöre
Accessoires
Acessorios
Tillbehör

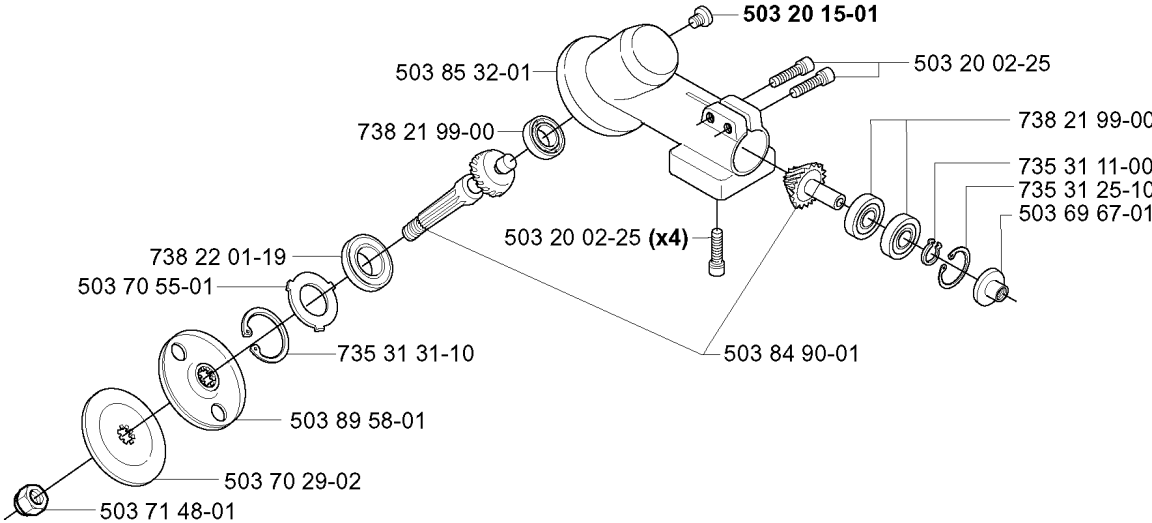


ACCESSORIES

322 E, 2001-01

| Part No | Description | Remark | QTY KIT |
|--------------|---------------|--------|---------|
| 501 60 02-03 | SCREWDRIVER | | 1 |
| 502 11 46-02 | SOCKET WRENCH | | 1 |
| 502 21 58-01 | L-NYCKEL | | 1 |
| 502 28 59-01 | STOP | | 1 |
| 503 80 17-01 | GREASE | | 1 |
| 503 97 64-01 | GREASE | | 1 |

B compl 502 21 92-06



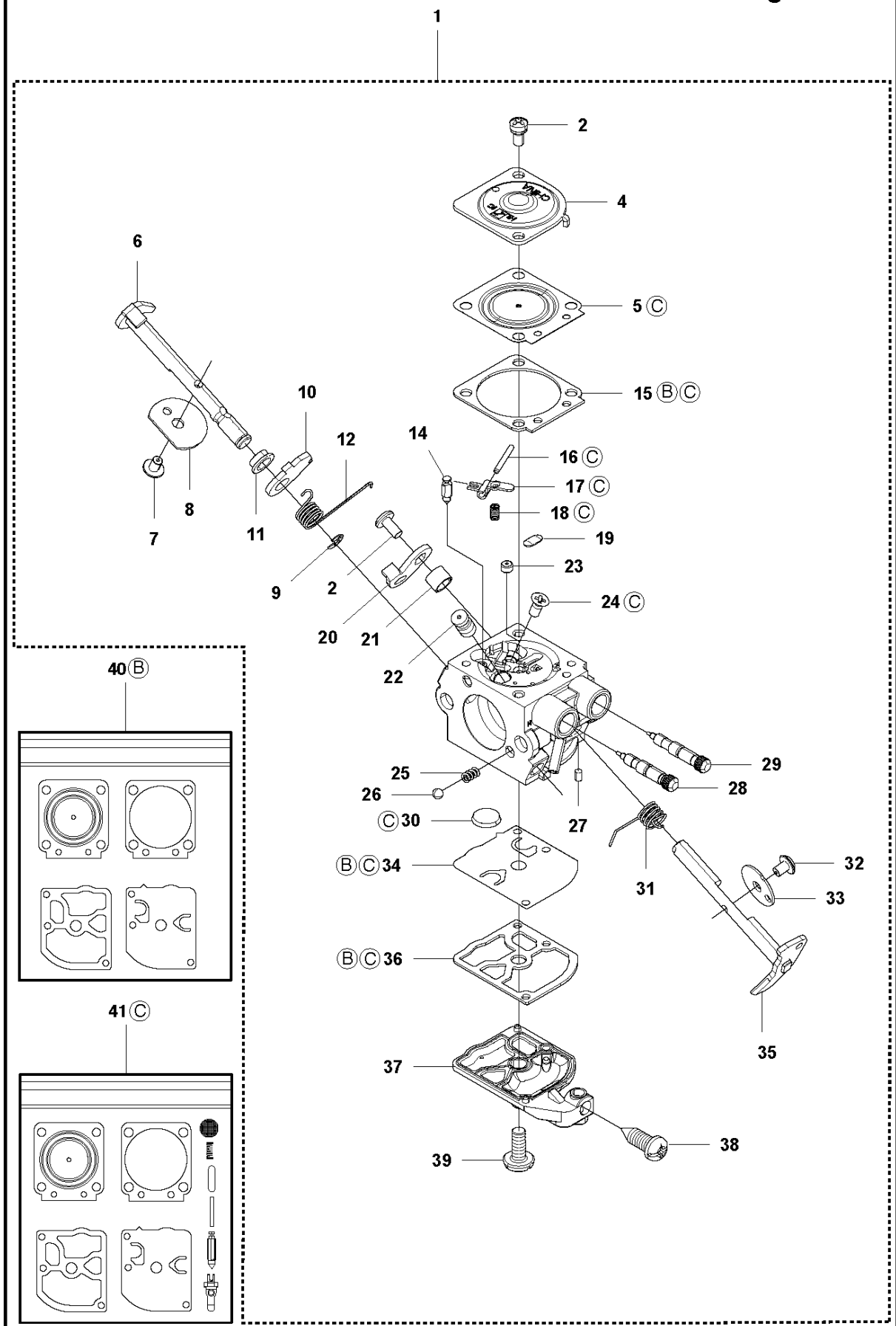
BEVEL GEAR

322 E, 2001-01

| Part No | Description | Remark | QTY KIT |
|--------------|-------------------|--------|---------|
| 502 21 92-06 | GEAR | | 1 |
| 503 20 02-25 | SCREW IHSCFM | | 4 |
| 503 20 02-25 | SCREW IHSCFM | | 1 |
| 503 20 15-01 | SCREW IHHM | | 1 |
| 503 69 67-01 | GASKET RING UPPER | | 1 |
| 503 70 29-02 | SUPPORT FLANGE | | 1 |
| 503 70 55-01 | COVER WASHER | | 1 |
| 503 71 48-01 | NUT BLADE | | 1 |
| 503 84 90-01 | GEAR WHEEL | | 1 |
| 503 85 32-01 | GEAR HOUSING | | 1 |
| 503 89 58-01 | DRIVER | | 1 |
| 735 31 11-00 | CIRCLIP | | 1 |
| 735 31 25-10 | CIRCLIP | | 1 |
| 735 31 31-10 | CIRCLIP | | 1 |
| 738 21 99-00 | BALL BEARING | | 1 |
| 738 21 99-00 | BALL BEARING | | 1 |
| 738 22 01-19 | BALL BEARING | | 1 |

CARBURETOR (only option for US)

Hualong HQ-2

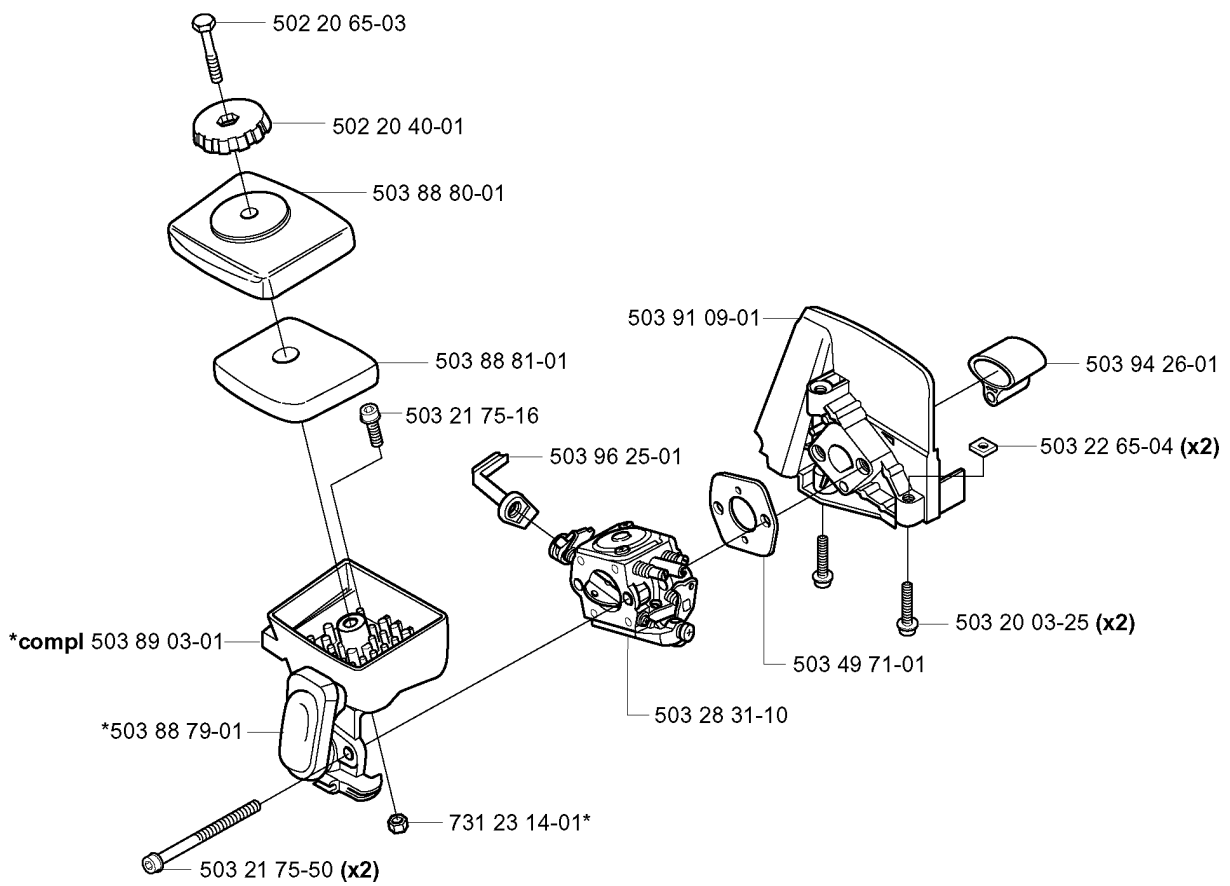


CARBURETOR

322 E, 2001-01

| Ref | Part No | Description | Remark | QTY | KIT |
|-----|--------------|----------------|----------------------------------|-----|-----|
| 1 | 576 01 98-01 | CARBURETTOR | Hualong HQ-2, only option for US | 1 | |
| 2 | 576 02 42-01 | SCREW | | 2 | 1 |
| 4 | 576 02 36-01 | COVER | | 1 | 1 |
| 5 | 576 02 24-01 | DIAPHRAGM ASSY | | 1 | 1 |
| 6 | 576 02 30-01 | SHAFT ASSY | | 1 | 1 |
| 7 | 576 02 41-01 | SCREW | | 1 | 1 |
| 8 | 576 02 32-01 | CHOKE | | 1 | 1 |
| 9 | 576 02 48-01 | E-CLIP | | 1 | 1 |
| 10 | 576 02 31-01 | LEVER | | 1 | 1 |
| 11 | 576 02 35-01 | BUSHING | | 1 | 1 |
| 12 | 576 02 33-01 | SPRING | | 1 | 1 |
| 14 | 576 02 01-01 | VALVE | | 1 | 1 |
| 15 | 576 02 37-01 | GASKET | | 1 | 1 |
| 16 | 576 02 03-01 | PIN | | 1 | 1 |
| 17 | 576 02 04-01 | LEVER | | 1 | 1 |
| 18 | 576 02 05-01 | SPRING | | 1 | 1 |
| 19 | 576 02 06-01 | PLUG | | 1 | 1 |
| 20 | 576 02 28-01 | LEVER | | 1 | 1 |
| 21 | 576 02 29-01 | BUSHING | | 1 | 1 |
| 22 | 576 02 07-01 | MAIN NOZZLE | | 1 | 1 |
| 23 | 576 02 08-01 | CHECK VALVE | | 1 | 1 |
| 24 | 576 02 43-01 | SCREW | | 1 | 1 |
| 25 | 576 02 34-01 | SPRING | | 1 | 1 |
| 26 | 576 02 47-01 | BALL | | 1 | 1 |
| 27 | 576 02 23-01 | BAR | | 1 | 1 |
| 28 | 576 02 10-01 | NEEDLE | | 1 | 1 |
| 29 | 576 02 11-01 | NEEDLE | | 1 | 1 |
| 30 | 576 02 15-01 | SCREEN | | 1 | 1 |
| 31 | 576 02 27-01 | SPRING | | 1 | 1 |
| 32 | 576 02 40-01 | SCREW | | 1 | 1 |
| 33 | 576 02 26-01 | THROTTLE | | 1 | 1 |
| 34 | 576 02 39-01 | DIAPHRAGM PUMP | | 1 | 1 |
| 35 | 576 02 25-01 | SHAFT ASSY | | 1 | 1 |
| 36 | 576 02 38-01 | GASKET | | 1 | 1 |
| 37 | 576 02 20-01 | COVER | | 1 | 1 |
| 38 | 576 02 22-01 | SCREW | | 1 | 1 |
| 39 | 576 02 44-01 | SCREW | | 1 | 1 |
| 40 | 581 74 35-01 | GASKET KIT | | 1 | 1 |
| 41 | 581 74 37-01 | REPAIR KIT | | 1 | 1 |

E



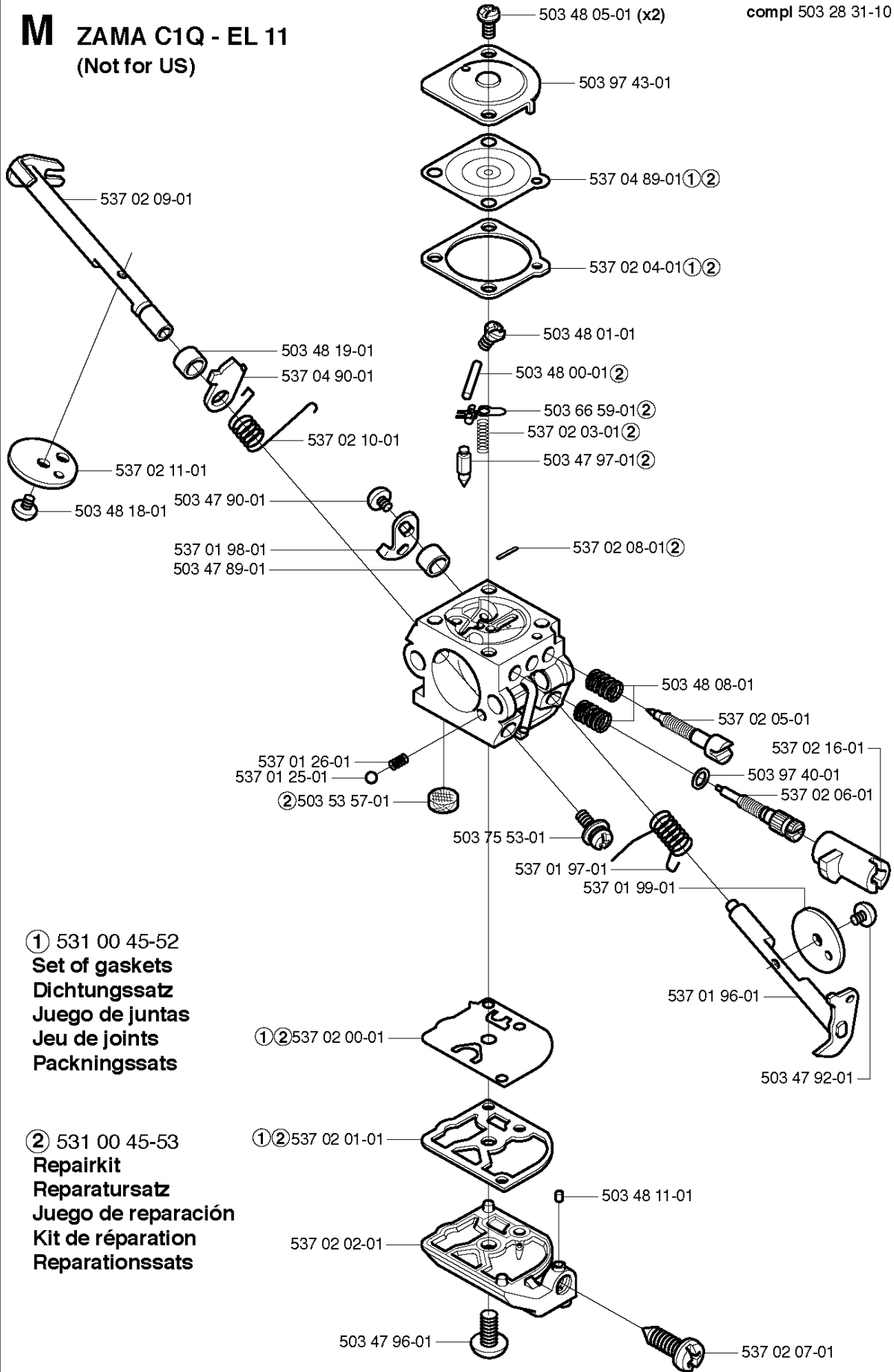
CARBURETOR & AIR FILTER

322 E, 2001-01

| Part No | Description | Remark | QTY KIT |
|--------------|------------------|--------|---------|
| 502 20 40-01 | KNOB | | 1 |
| 502 20 65-03 | SCREW EHHM | | 1 |
| 503 20 03-25 | SCREW IHSCFM | | 2 |
| 503 21 75-16 | SCREW IHSCFT | | 1 |
| 503 21 75-50 | SCREW IHSCFT | | 2 |
| 503 22 65-04 | SQUARE NUT | | 2 |
| 503 28 31-10 | CARBURETTOR | | 1 |
| 503 49 71-01 | GASKET | | 1 |
| 503 88 79-01 | HUB CAP | | 1 |
| 503 88 80-01 | FILTER COVER | | 1 |
| 503 88 81-01 | AIR FILTER | | 1 |
| 503 89 03-01 | FILTERBLOCK ASSY | | 1 |
| 503 91 09-01 | INSULATION WALL | | 1 |
| 503 94 26-01 | INLET PIPE | | 1 |
| 503 96 25-01 | CHOKE CONTROL | | 1 |
| 731 23 14-01 | HEXAGON NUT | | 1 |

M ZAMA C1Q - EL 11
(Not for US)

compl 503 28 31-10



① 531 00 45-52
Set of gaskets
Dichtungssatz
Juego de juntas
Jeu de joints
Packningssats

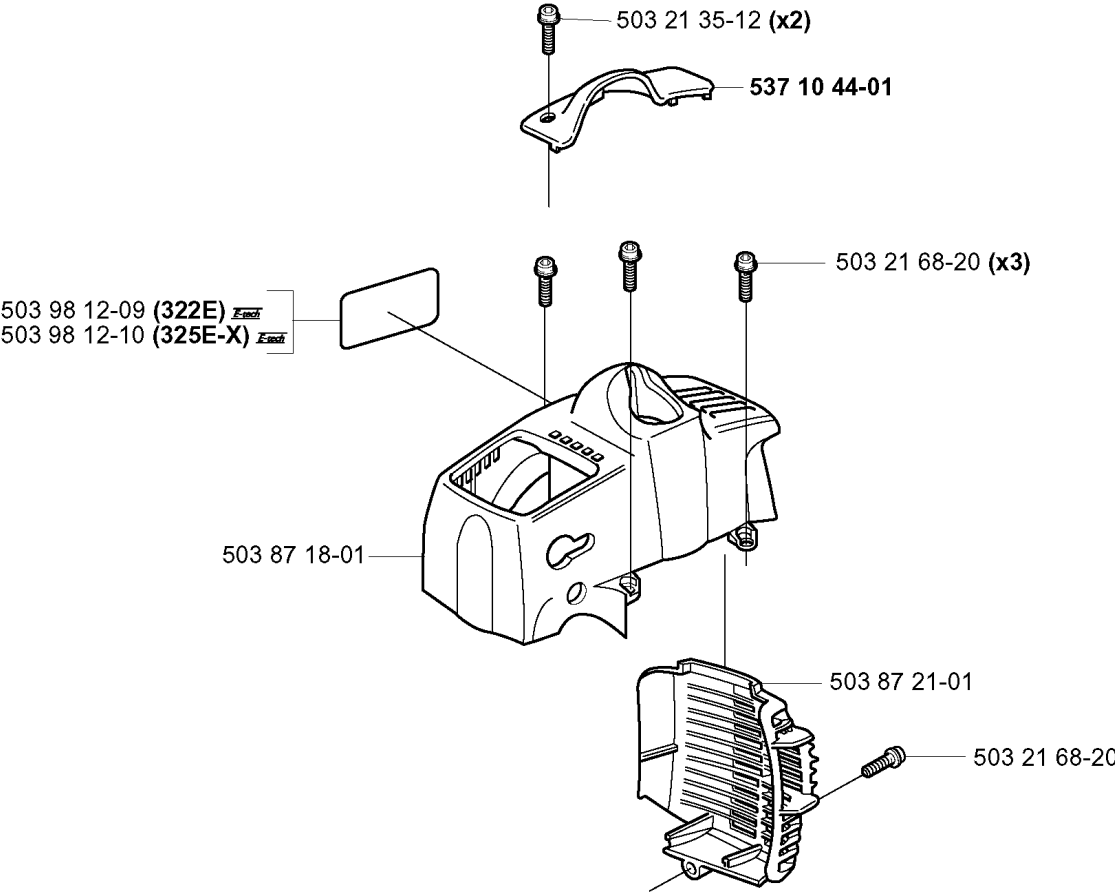
② 531 00 45-53
Repairkit
Reparatursatz
Juego de reparación
Kit de réparation
Reparationssats

CARBURETOR, NOT FOR US

322 E, 2001-01

| Part No | Description | Remark | QTY KIT |
|--------------|---------------------|--|---------|
| 503 28 31-10 | CARBURETTOR | | 1 |
| 503 47 89-01 | COLLAR | | 1 |
| 503 47 90-01 | SCREW | | 1 |
| 503 47 92-01 | SCREW | | 1 |
| 503 47 96-01 | SCREW | | 1 |
| 503 47 97-01 | VALVE | 531 00 45-53 REPAIRKIT | 1 |
| 503 48 00-01 | PIN RETAINING SCREW | 531 00 45-53 REPAIRKIT | 1 |
| 503 48 01-01 | SCREW | | 1 |
| 503 48 05-01 | SCREW | | 2 |
| 503 48 08-01 | SPRING | | 1 |
| 503 48 11-01 | PIECE | | 1 |
| 503 48 18-01 | SCREW | | 1 |
| 503 48 19-01 | COLLAR | | 1 |
| 503 53 57-01 | STRAINER | 531 00 45-53 REPAIRKIT | 1 |
| 503 66 59-01 | LEVER | 531 00 45-53 REPAIRKIT | 1 |
| 503 75 53-01 | SCREW | | 1 |
| 503 97 40-01 | WASHER | | 1 |
| 503 97 43-01 | COVER | | 1 |
| 531 00 45-52 | GASKET KIT | | 1 |
| 531 00 45-53 | SET | | 1 |
| 537 01 25-01 | BALL | | 1 |
| 537 01 26-01 | SPRING | | 1 |
| 537 01 96-01 | SHAFT ASSY | | 1 |
| 537 01 97-01 | SPRING | | 1 |
| 537 01 98-01 | LEVER | | 1 |
| 537 01 99-01 | VALVE | | 1 |
| 537 02 00-01 | DIAPHRAGM PUMP | 531 00 45-52 SET OF GASKETS 531 00 45-53 REPAIRKIT | 1 |
| 537 02 01-01 | GASKET PUMP | 531 00 45-52 SET OF GASKETS 531 00 45-53 REPAIRKIT | 1 |
| 537 02 02-01 | COVER | | 1 |
| 537 02 03-01 | SPRING | 531 00 45-53 REPAIRKIT | 1 |
| 537 02 04-01 | GASKET | 531 00 45-52 SET OF GASKETS 531 00 45-53 REPAIRKIT | 1 |
| 537 02 05-01 | SCREW | | 1 |
| 537 02 06-01 | SCREW | | 1 |
| 537 02 07-01 | SCREW | | 1 |
| 537 02 08-01 | PLUG | 531 00 45-53 REPAIRKIT | 1 |
| 537 02 09-01 | SHAFT ASSY | | 1 |
| 537 02 10-01 | SPRING | | 1 |
| 537 02 11-01 | VALVE | | 1 |
| 537 02 16-01 | LIMITER CAP | | 1 |
| 537 04 89-01 | DIAPHRAGM | 531 00 45-52 SET OF GASKETS 531 00 45-53 REPAIRKIT | 1 |
| 537 04 90-01 | LEVER | | 1 |

D



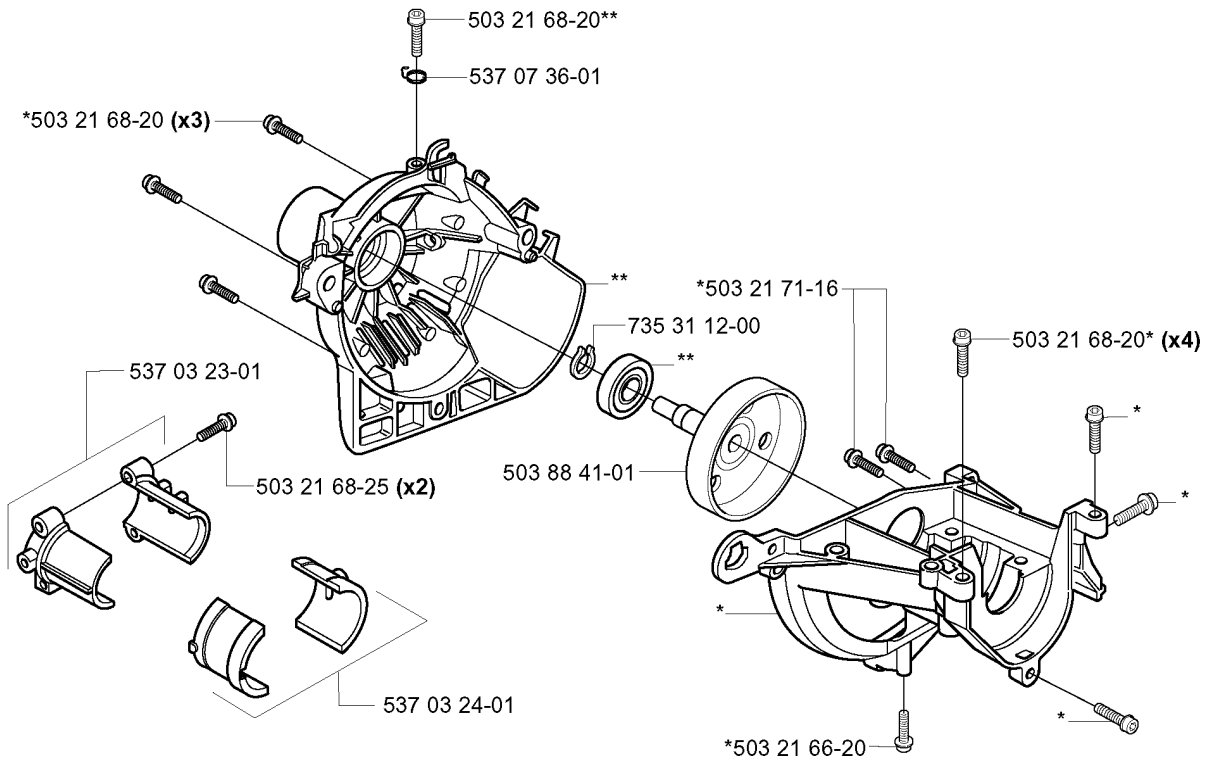
COVER

322 E, 2001-01

| Part No | Description | Remark | QTY KIT |
|--------------|----------------|--------|---------|
| 503 21 35-12 | SCREW CCRPANT | | 2 |
| 503 21 68-20 | SCREW IHSCFT | | 1 |
| 503 21 68-20 | SCREW IHSCFT | | 3 |
| 503 87 18-01 | CYLINDER COVER | | 1 |
| 503 87 21-01 | HEAT PROTECTOR | | 1 |
| 503 98 12-09 | LABEL | 322E | 1 |
| 503 98 12-10 | LABEL | 325E-X | 1 |
| 537 10 44-01 | ARM PROTECTION | | 1 |

L

*compl 537 04 11-01
**compl 537 04 12-01



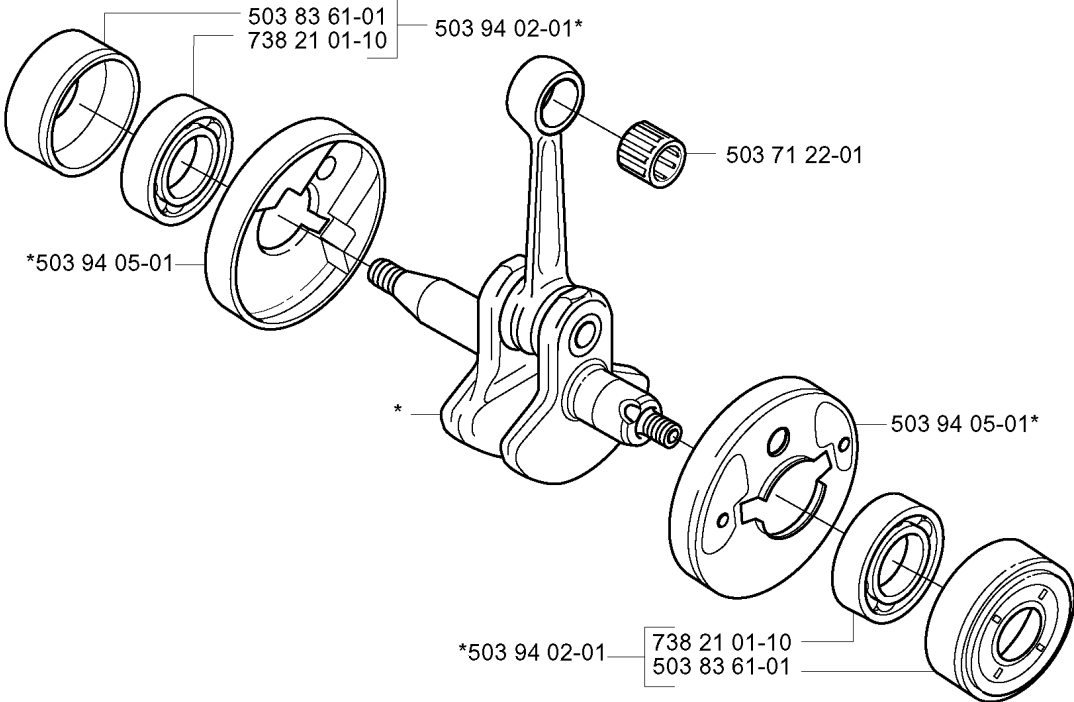
CRANKCASE

322 E, 2001-01

| Part No | Description | Remark | QTY KIT |
|--------------|----------------------|--------|---------|
| 503 21 66-20 | SCREW IHSCFT | | 1 |
| 503 21 68-20 | SCREW IHSCFT | | 3 |
| 503 21 68-20 | SCREW IHSCFT | | 4 |
| 503 21 68-20 | SCREW IHSCFT | | 1 |
| 503 21 68-25 | SCREW IHSCFT | | 2 |
| 503 21 71-16 | SCREW IHSCFT | | 1 |
| 503 88 41-01 | CLUTCH DRUM | | 1 |
| 537 03 23-01 | CLAMPING SLEEVE ASSY | | 1 |
| 537 03 24-01 | INSULATOR | | 1 |
| 537 04 11-01 | CRANKCASE | | 1 |
| 537 04 12-01 | CLUTCH COVER | | 1 |
| 537 07 36-01 | SPRING | | 1 |
| 735 31 12-00 | CIRCLIP | | 1 |

J

*compl 503 85 24-73



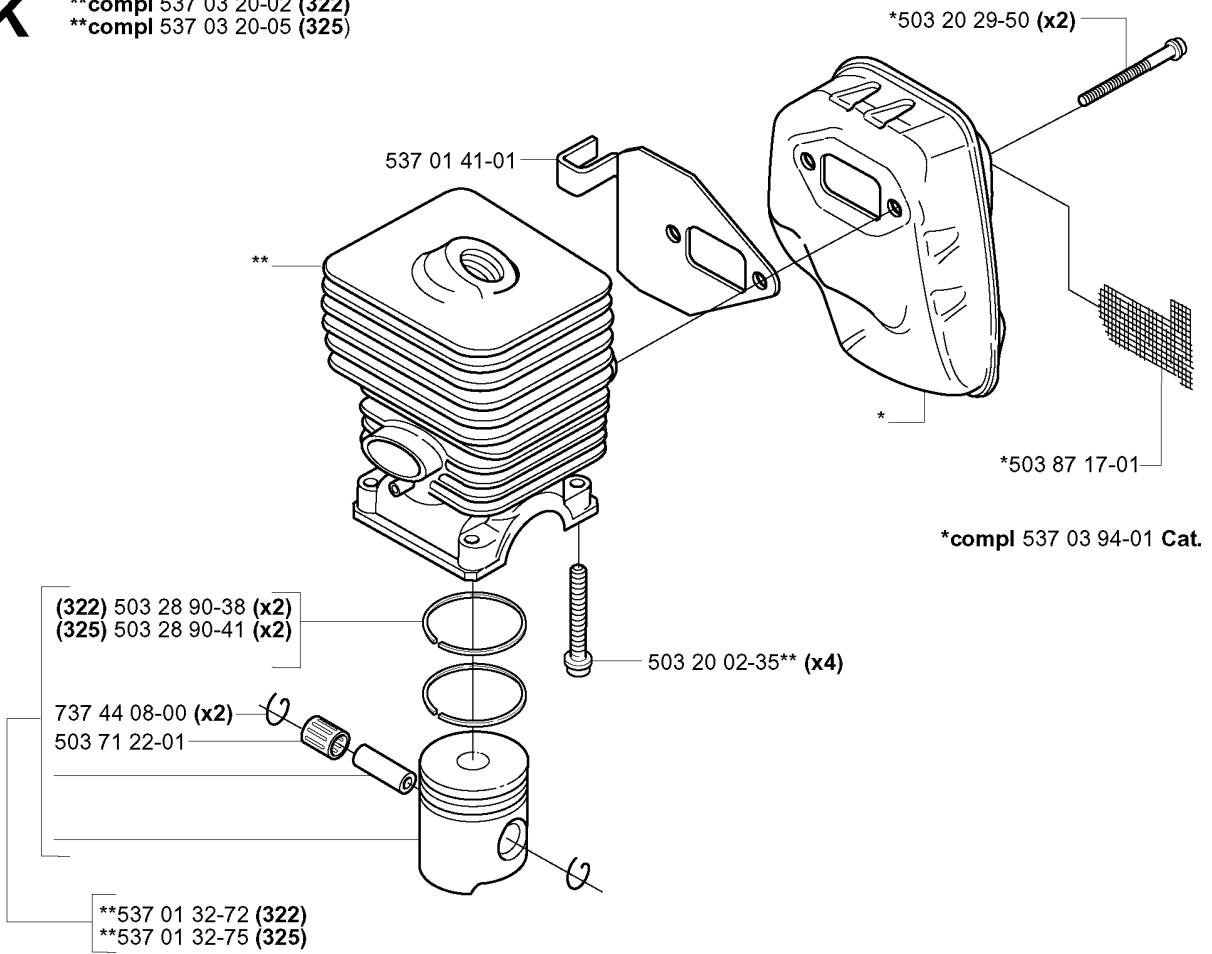
CRANKSHAFT

322 E, 2001-01

| Part No | Description | Remark | QTY KIT |
|--------------|-----------------|--------|---------|
| 503 71 22-01 | BEARING | | 1 |
| 503 83 61-01 | BEARING CAGE | | 1 |
| 503 83 61-01 | BEARING CAGE | | 1 |
| 503 85 24-73 | CRANKSHAFT ASSY | | 1 |
| 503 94 02-01 | BEARING CAGE | | 1 |
| 503 94 02-01 | BEARING CAGE | | 1 |
| 503 94 05-01 | CUP | | 1 |
| 503 94 05-01 | CUP | | 1 |
| 738 21 01-10 | BALL BEARING | | 1 |
| 738 21 01-10 | BALL BEARING | | 1 |

K

****compl 537 03 20-02 (322)**
****compl 537 03 20-05 (325)**

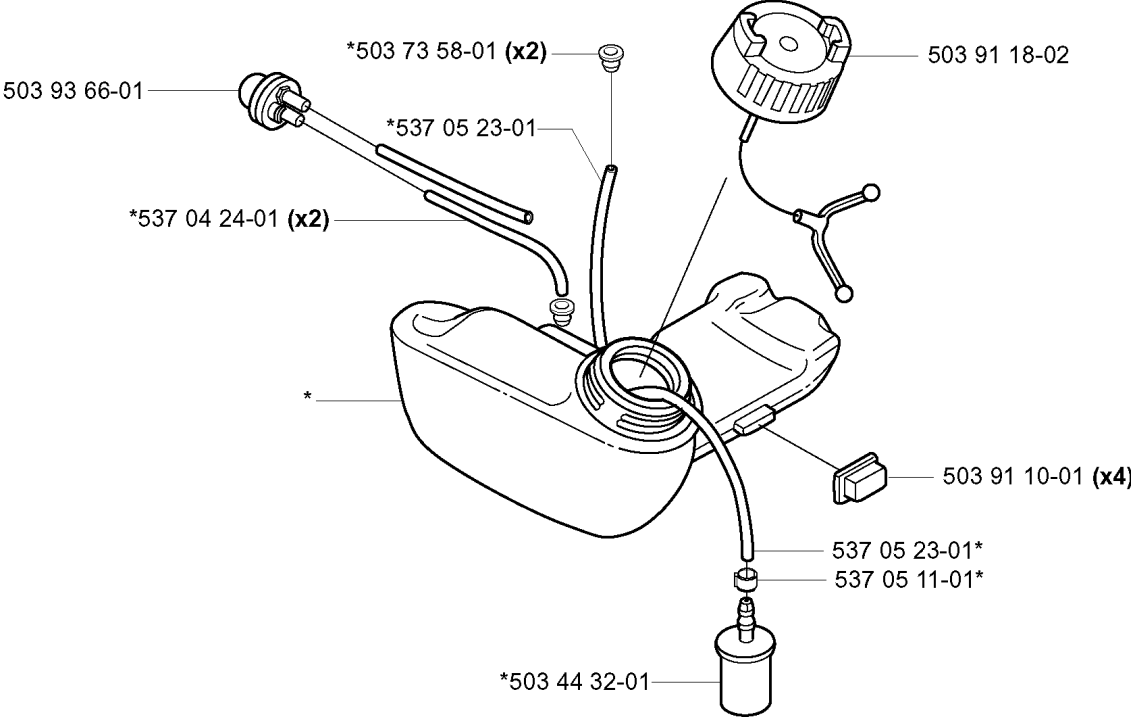


CYLINDER PISTON

322 E, 2001-01

| Part No | Description | Remark | QTY KIT |
|--------------|-----------------------|--------|---------|
| 503 20 02-35 | SCREW IHSCFM | | 4 |
| 503 20 29-50 | SCREW IHSCFM | | 2 |
| 503 28 90-38 | PISTON RING | 322 | 2 |
| 503 28 90-41 | PISTON RING | 325 | 2 |
| 503 71 22-01 | BEARING | | 1 |
| 503 87 17-01 | SPARK ARRESTOR SCREEN | | 1 |
| 537 01 32-72 | PISTON | 322 | 1 |
| 537 01 32-75 | PISTON | 325 | 1 |
| 537 01 41-01 | GASKET | | 1 |
| 537 03 20-02 | PISTON | 322 | 1 |
| 537 03 20-05 | PISTON | 325 | 1 |
| 537 03 94-01 | MUFFLER ASSY | CAT. | 1 |
| 737 44 08-00 | CIRCLIP | | 2 |

G *compl 537 06 86-01

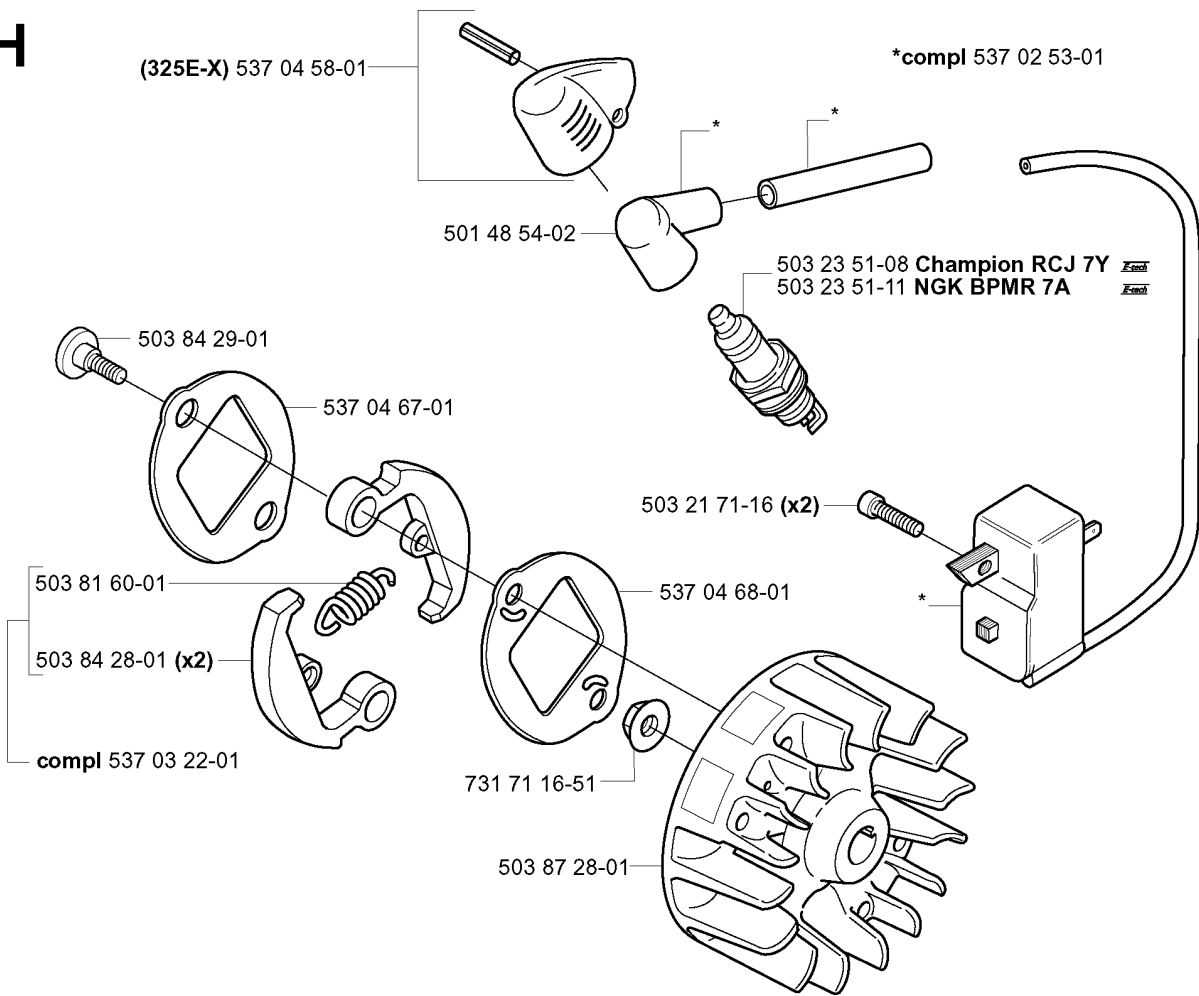


FUEL TANK

322 E, 2001-01

| Part No | Description | Remark | QTY KIT |
|--------------|----------------|--------|---------|
| 503 44 32-01 | FILTER | | 1 |
| 503 73 58-01 | BUSHING | | 2 |
| 503 91 10-01 | SUSPENSION | | 4 |
| 503 91 18-02 | TANK CAP | | 1 |
| 503 93 66-01 | PRIMER HOUSING | | 1 |
| 537 04 24-01 | FUEL HOSE | | 2 |
| 537 05 11-01 | HOSE CLAMP | | 1 |
| 537 05 23-01 | FUEL HOSE | | 1 |
| 537 05 23-01 | FUEL HOSE | | 1 |
| 537 06 86-01 | FUEL TANK | | 1 |

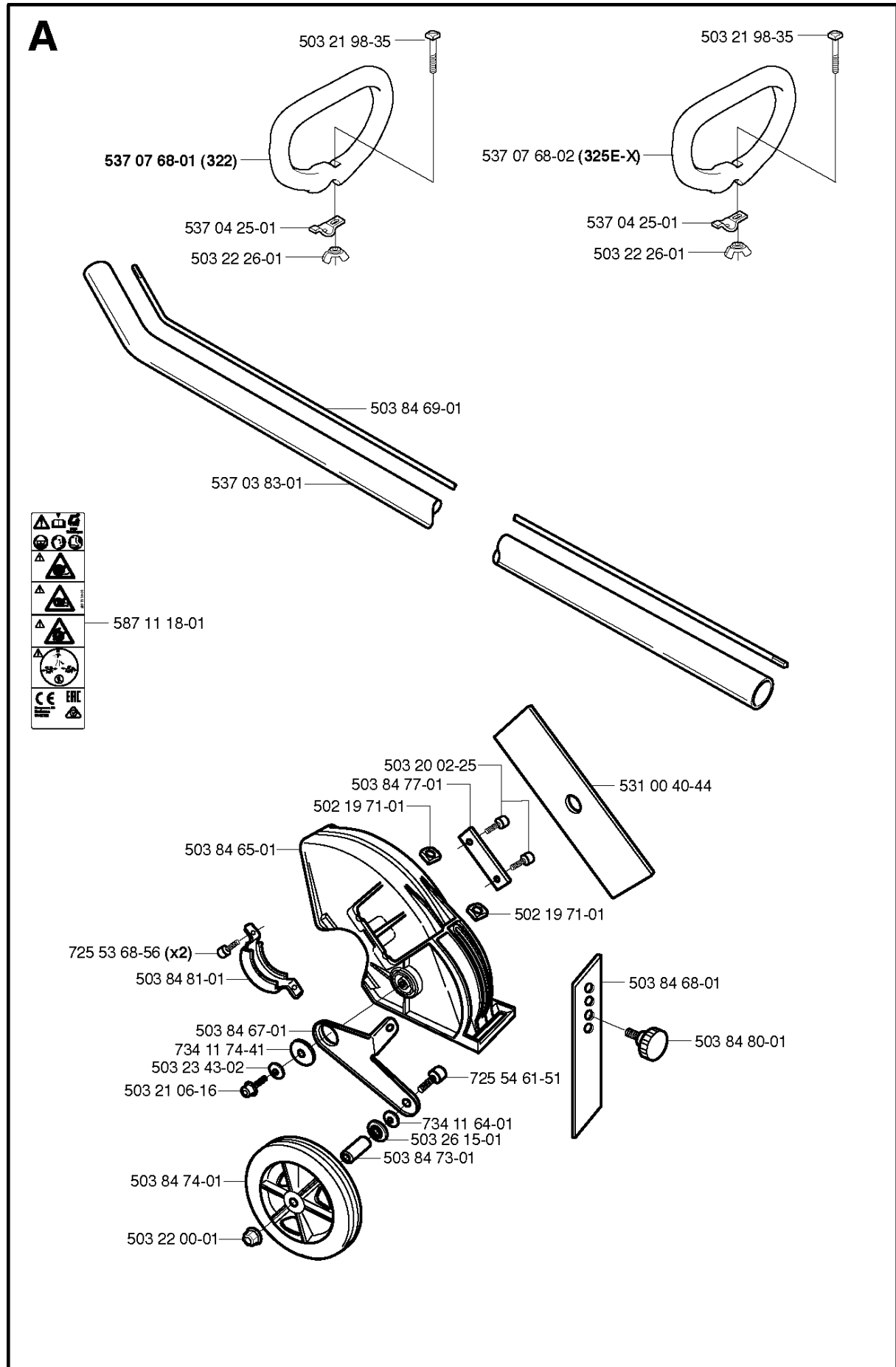
H



IGNITION SYSTEM & CLUTCH

322 E, 2001-01

| Part No | Description | Remark | QTY KIT |
|--------------|---------------------|-----------------|---------|
| 501 48 54-02 | SPARK PLUG CAP | | 1 |
| 503 21 71-16 | SCREW IHSCT | | 2 |
| 503 23 51-08 | SPARK PLUG | CHAMPION RCJ 7Y | 1 |
| 503 23 51-11 | SPARK PLUG | NGK BPMR 7A | 1 |
| 503 81 60-01 | CLUTCH SPRING | | 1 |
| 503 84 28-01 | CLUTCH SHOE | | 2 |
| 503 84 29-01 | SCREW | | 1 |
| 503 87 28-01 | FLYWHEEL | | 1 |
| 537 02 53-01 | ELECTRONIC MODULE | | 1 |
| 537 03 22-01 | CLUTCH ASSY | | 1 |
| 537 04 58-01 | COVER | 325E-X | 1 |
| 537 04 67-01 | WASHER | | 1 |
| 537 04 68-01 | WASHER | | 1 |
| 731 71 16-51 | HEXAGON NUT FLANGED | | 1 |



SHAFT & HANDLE

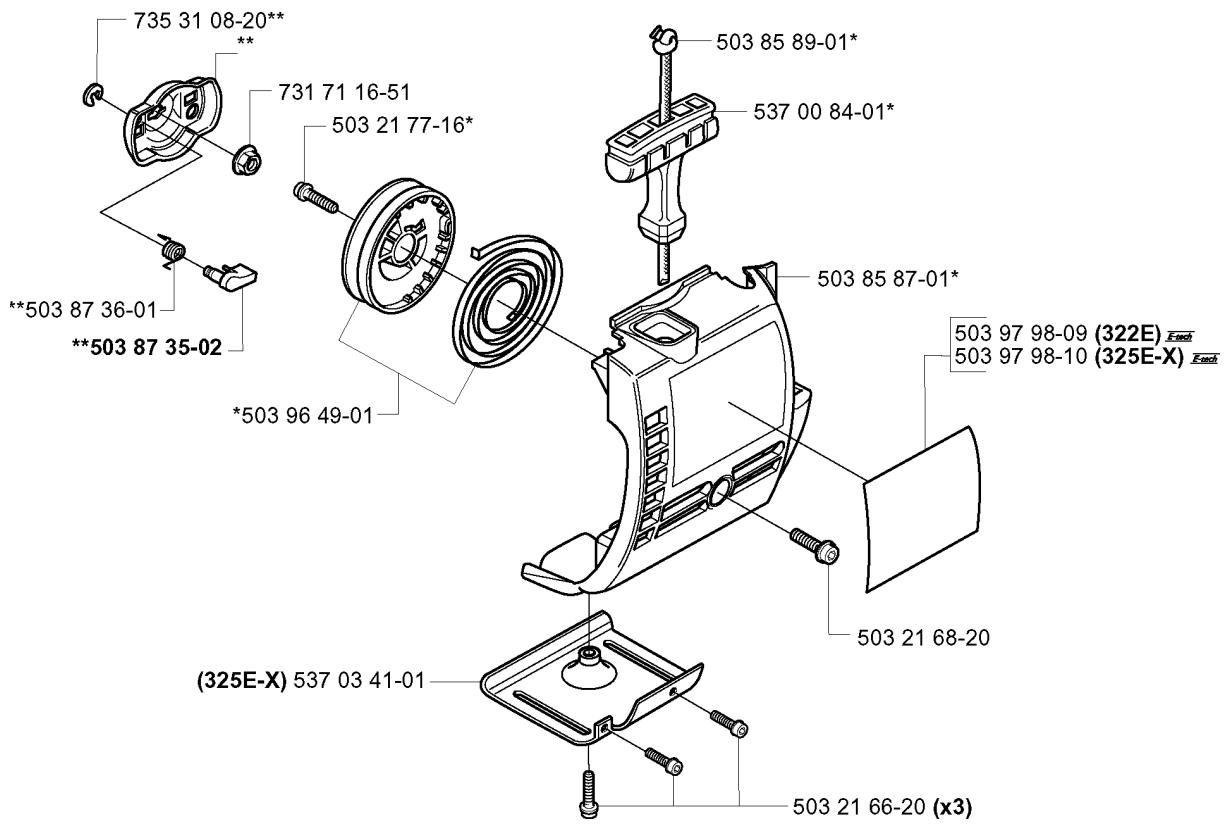
322 E, 2001-01

| Part No | Description | Remark | QTY KIT |
|--------------|--------------------|--------|---------|
| 502 19 71-01 | SQUARE NUT | | 1 |
| 502 19 71-01 | SQUARE NUT | | 1 |
| 503 20 02-25 | SCREW IHSCFM | | 1 |
| 503 21 06-16 | SCREW IHSCFT | | 1 |
| 503 21 98-35 | SCREW | | 1 |
| 503 21 98-35 | SCREW | | 1 |
| 503 22 00-01 | HEXAGON NUT FLANGE | | 1 |
| 503 22 26-01 | NUT | | 1 |
| 503 22 26-01 | NUT | | 1 |
| 503 23 43-02 | WASHER | | 1 |
| 503 26 15-01 | SEALING RING | | 1 |
| 503 84 65-01 | PROTECTIVE COVER | | 1 |
| 503 84 67-01 | BRACKET | | 1 |
| 503 84 68-01 | SPLASH GUARD | | 1 |
| 503 84 69-01 | SHAFT | | 1 |
| 503 84 73-01 | PIPE | | 1 |
| 503 84 74-01 | WHEEL | | 1 |
| 503 84 77-01 | BASE PLATE | | 1 |
| 503 84 80-01 | STEERING WHEEL | | 1 |
| 503 84 81-01 | CLAMP | | 1 |
| 531 00 40-44 | BLADE | | 1 |
| 537 03 83-01 | TUBE | | 1 |
| 537 04 25-01 | ATTACHMENT PLATE | | 1 |
| 537 04 25-01 | ATTACHMENT PLATE | | 1 |
| 537 07 68-01 | HANDLE | 322 | 1 |
| 537 07 68-02 | HANDLE | 325E-X | 1 |
| 587 11 18-01 | LABEL | | 1 |
| 725 53 68-56 | SCREW IHSCM | | 2 |
| 725 54 61-51 | SCREW IHSCM | | 1 |
| 734 11 64-01 | WASHER | | 1 |
| 734 11 74-41 | WASHER | | 1 |

F

****compl 503 87 33-02**

***compl 503 85 28-01**

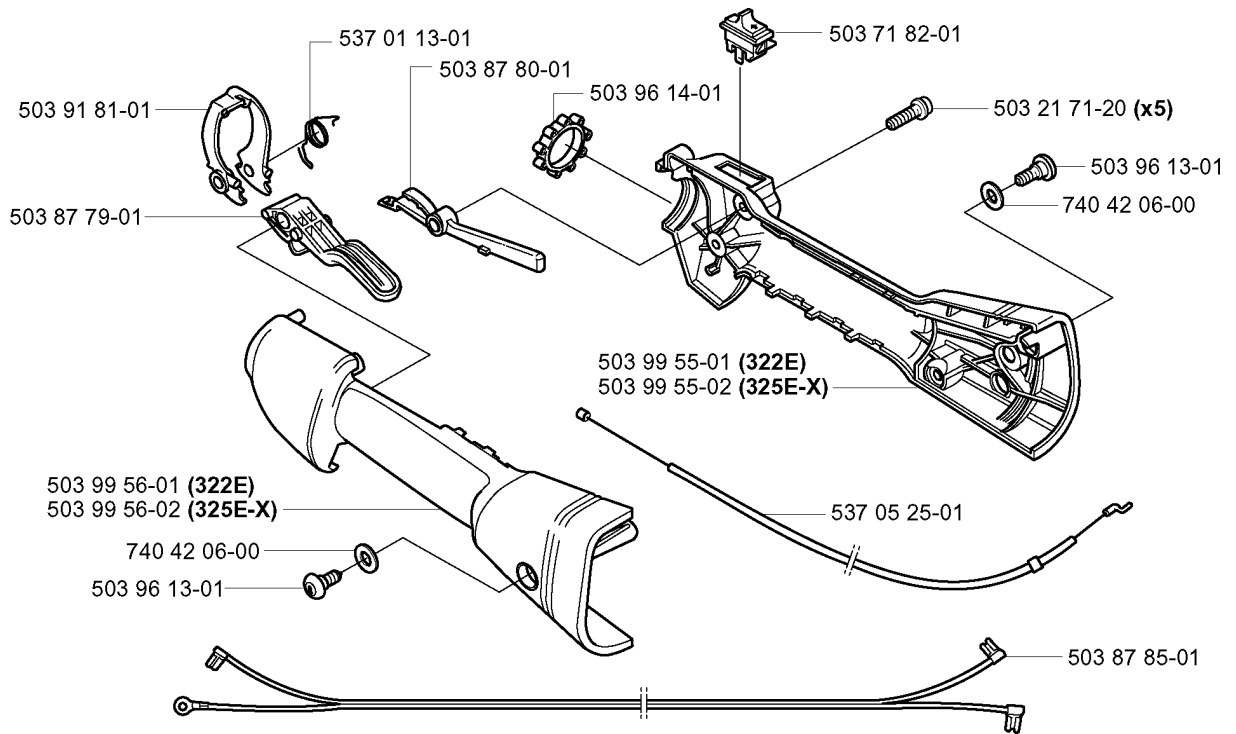


STARTER

322 E, 2001-01

| Part No | Description | Remark | QTY KIT |
|--------------|---------------------|--------|---------|
| 503 21 66-20 | SCREW IHSC T | | 3 |
| 503 21 68-20 | SCREW IHSC FT | | 1 |
| 503 21 77-16 | SCREW IHSC T | | 1 |
| 503 85 28-01 | STARTER ASSY | | 1 |
| 503 85 87-01 | STARTER HOUSING | | 1 |
| 503 85 89-01 | STARTER CORD | | 1 |
| 503 87 33-02 | STARTER PAWL BRIDGE | | 1 |
| 503 87 35-02 | STARTER PAWL | | 1 |
| 503 87 36-01 | SPRING | | 1 |
| 503 96 49-01 | STARTER PULLEY | | 1 |
| 503 97 98-09 | DECAL STARTER | 322E | 1 |
| 503 97 98-10 | DECAL STARTER | 325E-X | 1 |
| 537 00 84-01 | STARTER HANDLE | | 1 |
| 537 03 41-01 | PROTECTIVE PLATE | 325E-X | 1 |
| 731 71 16-51 | HEXAGON NUT FLANGED | | 1 |
| 735 31 08-20 | E-CLIP | | 1 |

C



THROTTLE CONTROLS

322 E, 2001-01

| Part No | Description | Remark | QTY KIT |
|--------------|---------------------|--------|---------|
| 503 21 71-20 | SCREW IHSCT | | 5 |
| 503 71 82-01 | SWITCH | | 1 |
| 503 87 79-01 | THROTTLE TRIGGER | | 1 |
| 503 87 80-01 | THROTTLE LOCKOUT | | 1 |
| 503 87 85-01 | SHORT CIRCUIT CABLE | | 1 |
| 503 91 81-01 | THROTTLE LEVER | | 1 |
| 503 96 13-01 | SCREW | | 1 |
| 503 96 13-01 | SCREW | | 1 |
| 503 96 14-01 | VIBRATION ABSORBER | | 1 |
| 503 99 55-01 | HANDLE HALF RIGHT | 322E | 1 |
| 503 99 55-02 | HANDLE HALF RIGHT | 325E-X | 1 |
| 503 99 56-01 | HANDLE HALF | 322E | 1 |
| 503 99 56-02 | HANDLE HALF | 325E-X | 1 |
| 537 01 13-01 | RECOIL SPRING | | 1 |
| 537 05 25-01 | THROTTLE WIRE ASSY | | 1 |
| 740 42 06-00 | O-RING | | 1 |
| 740 42 06-00 | O-RING | | 1 |