

Z1-12 Collection System

**Operators Manual
Parts Manual**

Models: 968999195

Please read these instructions carefully and make sure you understand them before using the machine.

MANUAL NO. 540200356 REV 02 (10/30/03)

INDEX

Operators Guide

Specifications	3
Features and Controls (Auxiliary Engine)	4
Features and Controls (Spindle Drive)	5
General Information	6
Safety Procedures	6
Unpacking Instructions	8
Assembly Instructions	8
Frame Assembly	8
Mounting the Z1-12	9
Engine Mount and Vacuum Assembly	10
Spindle Drive and Drive Kit Assembly	11
Hose Attachment	12
Hose Trimming	13
Door Tightness Adjustment	13
Servicing the Engine	14
Pre-Start Check	14
Starting the Engine	14
Operating the Vacuum	14

Maintenance and Service Instructions

Transport	15
Cleaning and Washing	15
Storage	15
Preventative Maintenance Schedule	15
Engine Service and Maintenance	16
Caring for Vacuum Hoses	16
Cleaning Exhaust Screen\	16
Troubleshooting Guide	17

Replacement Parts

Unit Assembly (Auxiliary Engine)	18
Unit Assembly (Spindle Drive)	19
Replacement Parts List	20

WARNING: Engine exhaust, some of its constituents, and certain vehicle components contain or emit chemicals known to the State of California to cause cancer and birth defects or other reproductive harm.

SPECIFICATIONS

Auxiliary Engine

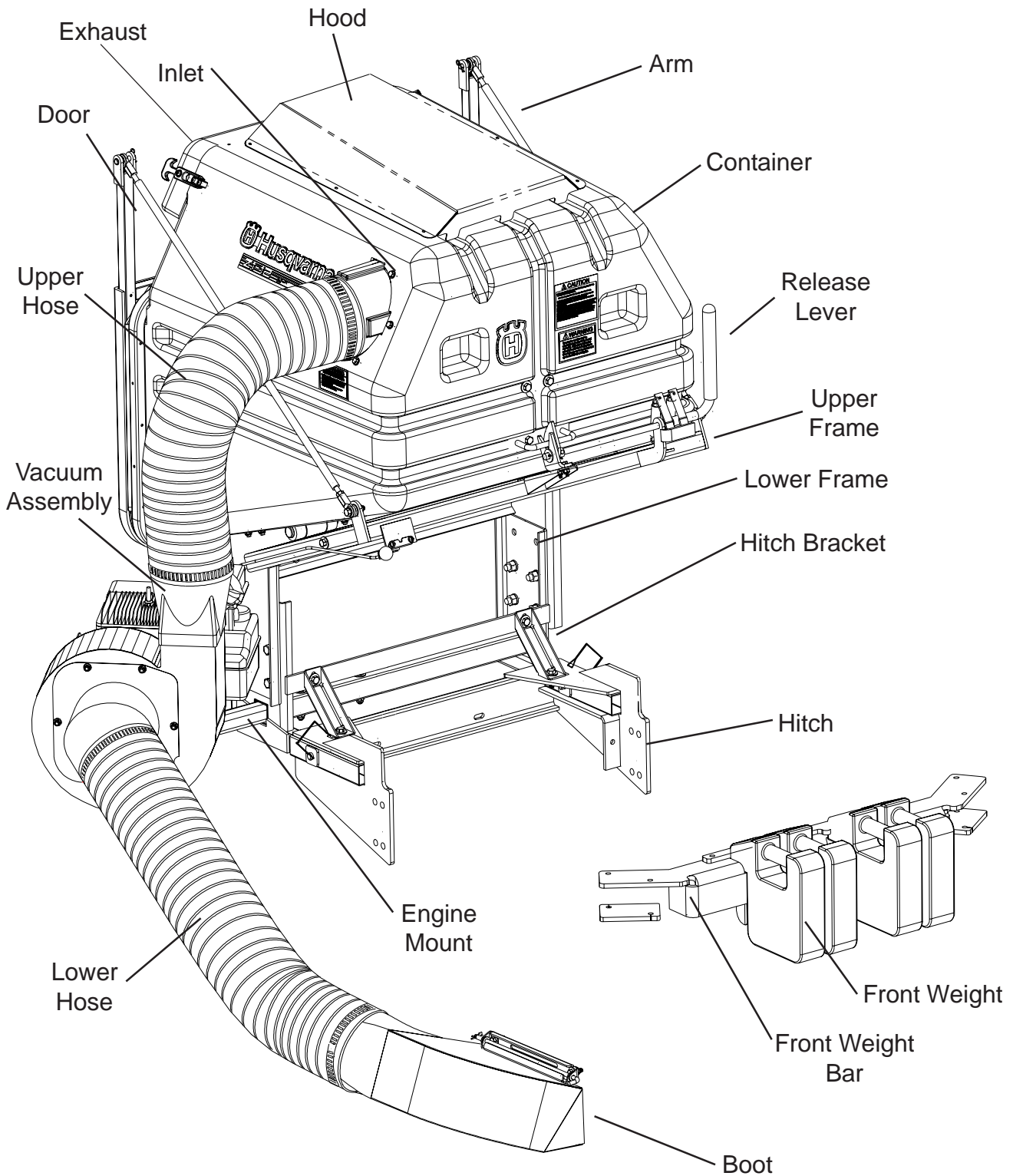
Height	47 - 50 in. (119 - 127 cm.)
Length	38 in. (97 cm.)
Width (without engine mount or vacuum assembly)	37 in. (94 cm.)
Width (with engine mount and vacuum assembly)	54 in. (137 cm.)
Engine Options	5.5 hp Briggs & Stratton 6 hp Kohler
Weight (without vacuum assembly)	190 lb. (84 kg.)
Weight (with 6 hp Kohler vacuum assembly)	255 lb. (116 kg.)
Total Capacity	14 cu ft (11.7 bu. or 0.41 m ³)
Usable Capacity	10 cu ft (8.4 bu. or 0.29 m ³)
Hose	7 in. (18 cm.) upper and lower

Spindle Drive (for Gen II Units only)

Height	47 - 50 in. (119 - 127 cm.)
Length	38 in. (97 cm.)
Width (without hose or blower)	37 in. (94 cm.)
Width (with hose and blower)	49 in. (124 cm.)
Deck Options	52" 61"
Weight (without spindle drive/blower assembly)	170 lb. (77 kg.)
Weight (with spindle drive/blower assembly)	230 lb. (104 kg.)
Total Capacity	14 cu ft (11.7 bu. or 0.41 m ³)
Usable Capacity	10 cu ft (8.4 bu. or 0.29 m ³)
Hose	7 in. (18 cm.)

FEATURES & CONTROLS

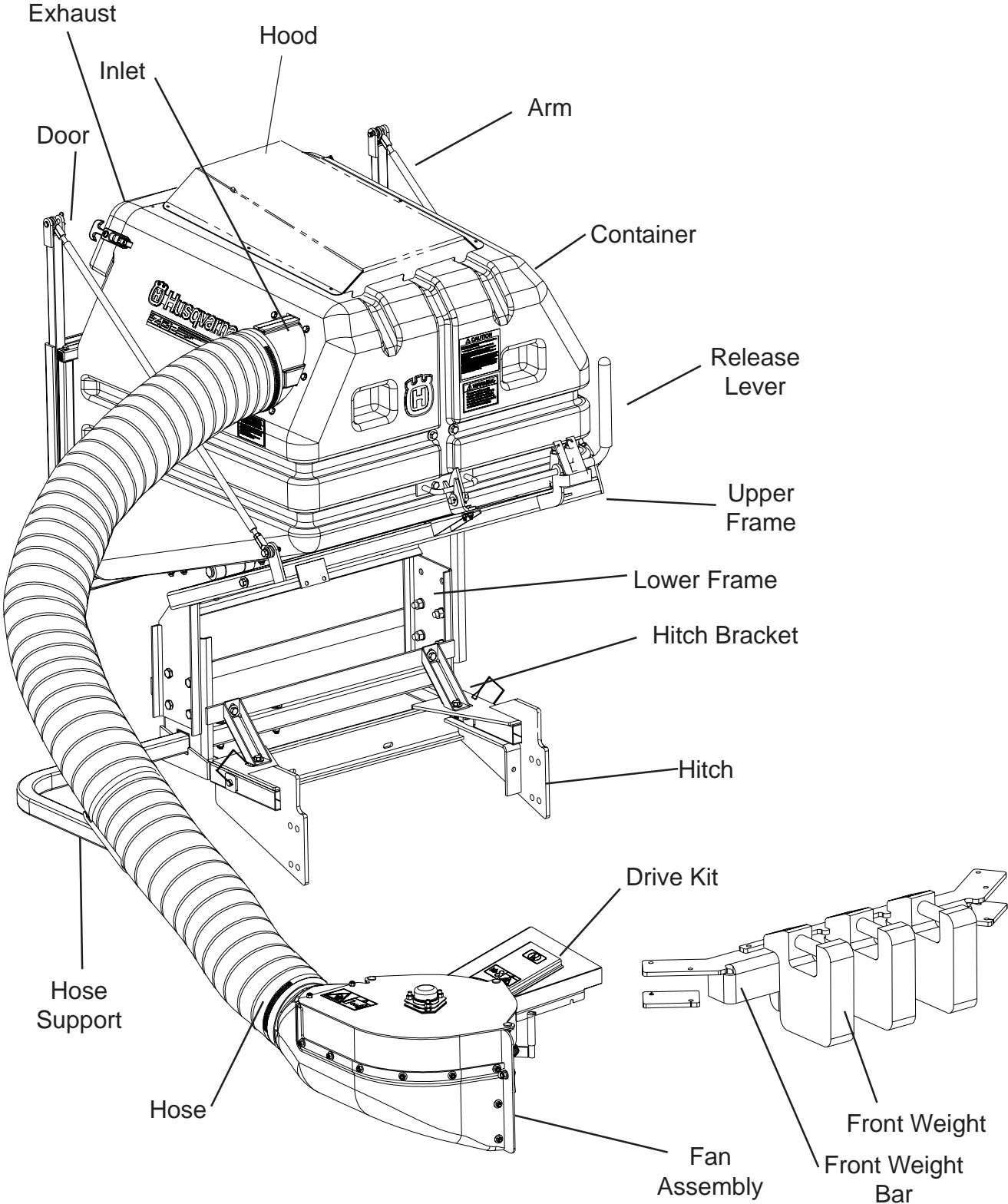
Auxiliary Engine



NOTE: Your Front Weight Bar, Hitch, and Boot may look different from those shown in this diagram.

FEATURES & CONTROLS

Spindle Drive



NOTE: Your Front Weight Bar and Hitch may look different from those shown in this diagram.

SAFETY RULES

General Information

This manual will assist you in the safe operation and proper maintenance of your Husqvarna equipment. Read it thoroughly before attempting to operate the machine. Call your dealer or Husqvarna if additional information is required.

The following safety symbols are used throughout the manual to alert you to information about unsafe actions or situations:



DANGER indicates immediate hazards that may result in severe injury or death.



WARNING indicates unsafe actions or situations that may cause severe injury, death, and/or major equipment or property damage.



CAUTION indicates unsafe actions or situations that may cause injury and/or minor equipment or property damage.

This equipment should not be modified without the manufacturer's prior written authorization. Doing so may not only affect the equipments' performance and durability, but also create safety hazards for the operator and the surroundings. Warranty will be void if changes are made to the equipment without the manufacturer's prior written authorization.

Safety Procedures

1 - Training:

- Read the Operator's manual. If the operator(s) or mechanic(s) can not read English it is the owner's responsibility to explain this material to them.
- Become familiar with the safe operation of the equipment, operator's controls, and safety signs.
- All operators and mechanics should be trained. The owner is responsible for training the users.
- Never let children or untrained people operate or service the equipment. Local regulations may restrict the age of the operator.
- The owner/user can prevent and is responsible for accidents or injuries occurring to themselves, other people, and/or property.

2 - Preparation:

- Wear appropriate clothing including hard hat, safety glasses and ear protection. Long hair, loose clothing or jewelry may get tangled in moving parts.
- Inspect the area where the equipment is to be used and remove all objects such as rocks, toys and wire which can be thrown by the machine.
- Use extra care when handling gasoline and other fuels. They are flammable and vapors are explosive. Use only an approved container. Never remove gas cap or add fuel with engine running. Allow engine to cool before refueling. Do not smoke while fueling or operating equipment. Never refuel or drain the machine indoors.
- Check that operator's controls, safety switches, hoses, and shields are securely attached and functioning properly. Do not operate unless they are functioning properly.

SAFETY RULES

3 - Operation

- Never run an engine in an enclosed area.
- Only operate in good light, keeping away from holes and hidden hazards.
- Slow down and use extra care on hillsides. Make turns gradually and at slow speed. Do not operate across the sides of slopes. Operate up and down slopes only. Do not operate on steep slopes.
- Turf conditions can affect the machine's stability. Do not operate on wet grass where traction may be reduced.
- Do not change the engine governor setting or overspeed the engine.
- Stop equipment and inspect vacuum impeller and hoses after striking objects or if an abnormal vibration occurs. Make necessary repairs before resuming operations.
- Look behind and down before backing up to ensure a clear path.
- Slow down and use caution when making turns and crossing roads and sidewalks. Stop vacuum and mower blades if not mowing.
- Do not operate machine under the influence of alcohol or drugs.

- Use care when loading or unloading the machine into a trailer or truck.
- Use care when approaching blind corners, shrubs, trees, or other objects that may obscure vision.

4 - Maintenance and Storage:

- Stop engine and disconnect spark plug wire. Wait for all movement to stop before adjusting, cleaning, or repairing.
- Clean grass and debris from muffler and engine to help prevent fires. Clean up oil or fuel spillage.
- Let engine cool before storing and do not store near sparks or open flame.
- Shut off fuel while storing. Do not store fuel near flames or drain indoors.
- Never allow untrained personnel to service machine.
- Keep hands and feet away from moving parts. If possible, do not make adjustments with the engine running.
- Keep all parts in good working condition and all hardware tightened. Replace all worn or damaged decals.

ASSEMBLY

Unpacking Instructions

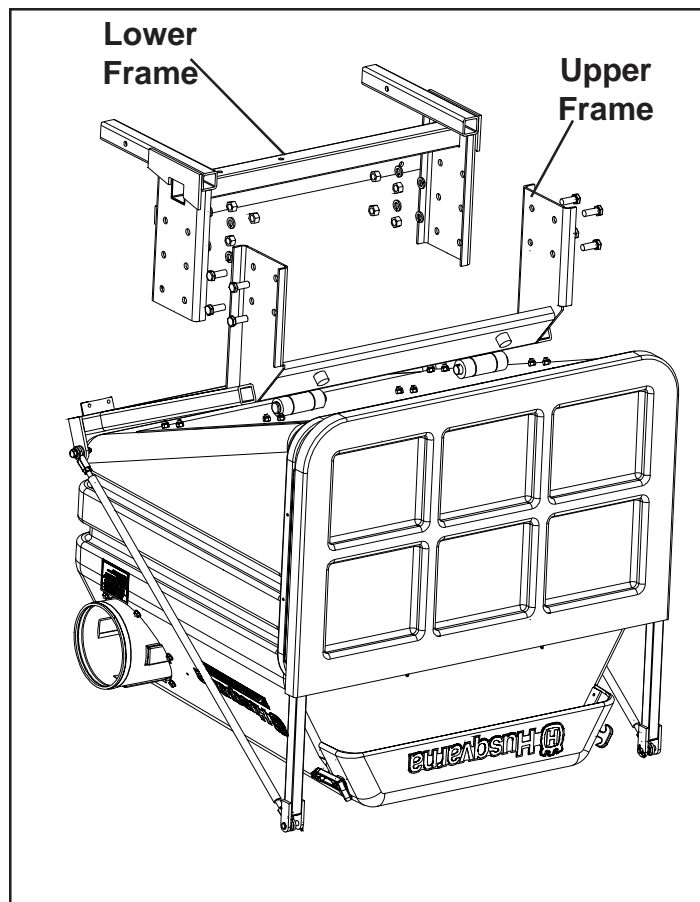
1. Cut straps around carton and remove top.
2. Wear eye protection. Remove wood pieces.
NOTE: Watch for nails and wood splinters.
3. Slide carton sleeve out of bottom tray and lift over Z1-12.

Assembly Instructions

Frame Assembly

Tools Required:

1. 3/4" wrench
2. Ratchet
3. 3/4" socket



1. Position the lower frame inside the upper frame.
2. Align holes corresponding to desired position of frame.
3. Secure with eight (8) 1/2" x 1-1/4" hex bolts and eight (8) 1/2" nylon lock nuts.

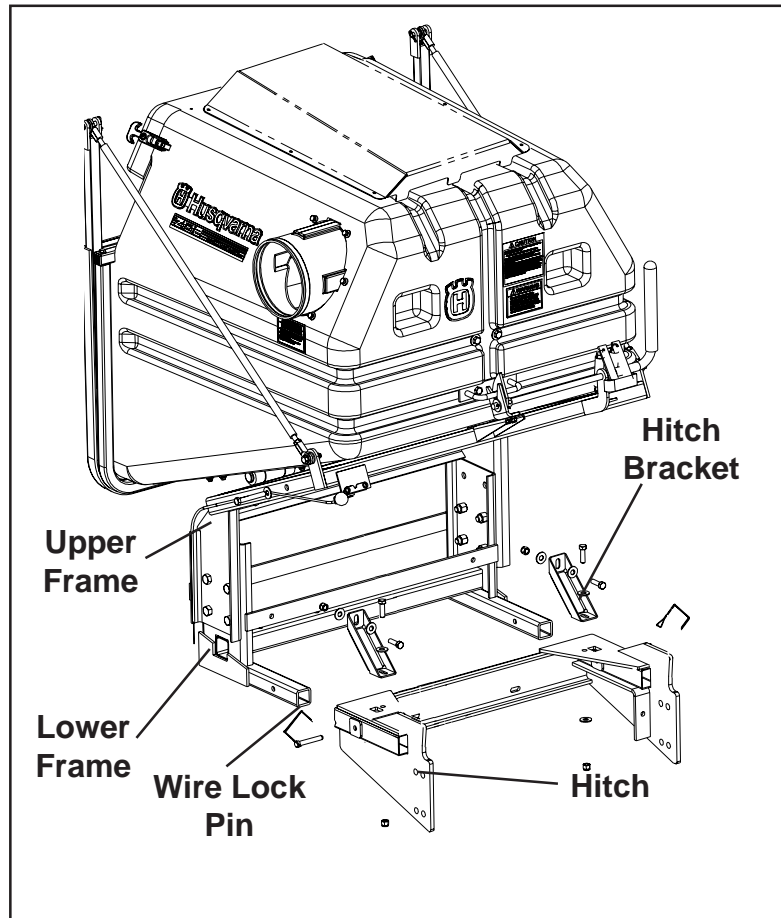
ASSEMBLY

Mounting the Z1-12

NOTE: This portion of the assembly requires lifting the Z1-12; two people are required.

Tools Required:

1. 9/16" wrench
2. Ratchet
3. 9/16" socket
4. Drill
5. 1/8" Drill Bit
6. 13/32" Drill Bit



1. Install the Hitch from the Custom Kit according to the instruction sheet included in that carton.
2. Slide the Z1-12 into the hitch.
3. Line up holes in the Hitch and Z1-12 and secure with two (2) 3/8" wire lock pins.
4. Position the Hitch Brackets so that they are aligned with the holes on the top plate of the Hitch and the holes in the forward cross bar of the Lower Frame.
5. Secure with four (4) 3/8" x 1-1/4" hex bolts, four (4) 3/8" nylon lock nuts, and eight (8) 3/8" flat washers.
6. Attach the Support Arms to the mower through the holes where rear guard was attached using four (4) 3/8" x 1-1/4" hex bolts, eight (8) 3/8" flat washers, and four (4) 3/8" nylon lock nuts.
7. Using Support Arms as guide, mark hole centers in Upper Frame. Drill pilot hole with 1/8" bit, then redrill with 13/32" bit.
8. Attach the top of the Support Arms to the inside of the Upper Frame using two (2) 3/8" x 2-1/2" hex bolts, four (4) 3/8" flat washers, and two (2) 3/8" nylon lock nuts.

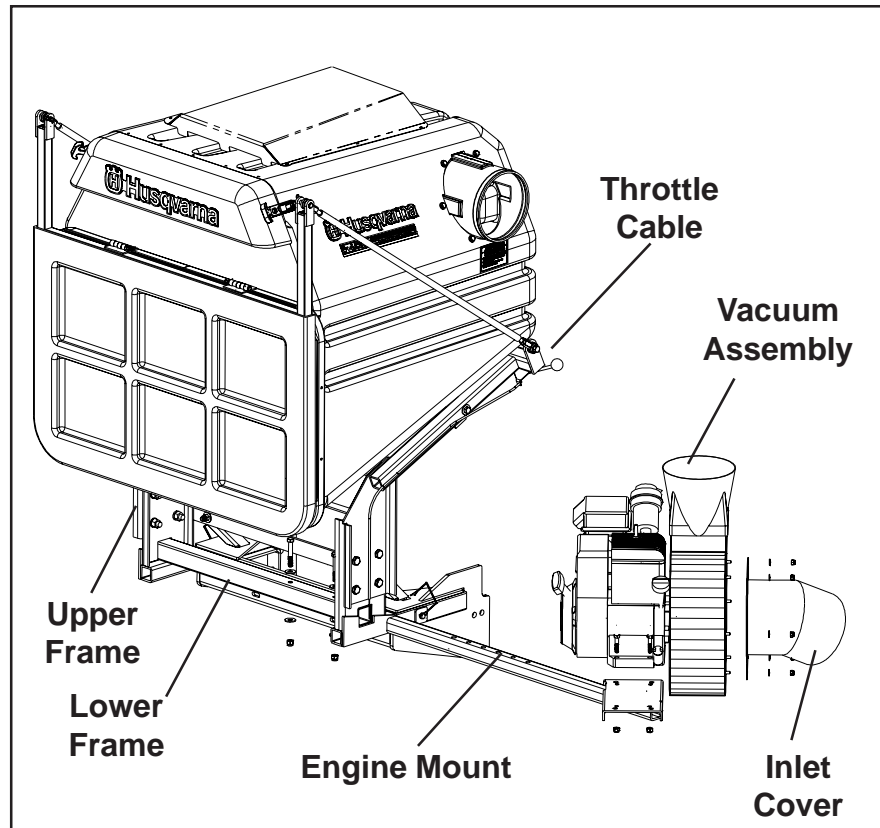
ASSEMBLY

Engine Mount and Vacuum Assembly

Note: This step for Auxiliary Engine units only. Please see Assembly Instructions for instructions on mounting Spindle Drive Units.

Tools Required:

1. 9/16" wrench
2. Ratchet
3. 9/16" socket.
4. 7/16" socket
5. 3/8" wrench
6. Flat Screwdriver



1. Slide the Engine Mount into the Lower Frame as shown.
2. Secure the Vacuum Assembly to the Engine Mount using the hardware provided with the Vacuum.
3. Slide the Engine Mount into the Lower Frame so that the Vacuum Assembly is as close to the Frame as possible.
4. Adjust the Engine Mount to the nearest aligning holes between the Lower Frame and the Engine Mount.
5. Secure the Engine Mount to the Lower Frame with two (2) 3/8" x 2-1/2" hex bolts, two (2) 3/8" hex nuts, and four (4) 3/8" flat washers.
6. Place the Inlet Cover on the Vacuum Assembly with the inlet cylinder pointing downward and forward toward the mower deck.
7. Secure the Inlet Cover with the hardware provided with the Vacuum.
8. Attach the Throttle Cable to the Upper Frame using two (2) #10 x 3/4" slotted round head screws, two (2) #10 flat washers, and two (2) #10 nylon lock nuts.
9. Attach the Throttle Cable to the throttle control of the engine on the Vacuum Assembly.

ASSEMBLY

Spindle Drive & Drive Kit Assembly

For use on the following mower models:

968999150 - 150C -151-152-157-158-159-160-161-162-163-164-165-166-167-168-169-170-170-171-172- 173-175-178- 179- 180-181-182-183-184-185-186-187-188-189-201-202-203-205-206- 207- 208- 224- 229- 230- 231- 235 and ZBMI42180- ZBMI48180- ZMKW48190- ZMKW48210- ZMKH52230- ZMKW52230- ZMKW61230- ZVKH52230- ZVKH52231- ZVKW52231- ZVKW52250- ZVKW52251- ZVKW61230- ZVKW61231- ZVKHL61230- ZVKHL61231- ZVHO52241- ZVHO61241- ZVKH61250- ZVKH61251- ZVKW61250- ZVKW61251- ZVKH61270- ZVKH61271- ZVKE61260- ZVKE61261- ZKW42170- ZKW48170- ZKWQL48170- ZKWQL48190- ZKW42171- ZKWQL48171- ZKWQL48191- ZKWQL42171- ZKW42172- ZKWQL42172- ZKWQL48172- ZKWQL48192- ZKWQL42182- ZKWQL48182- ZKWQL48212- ZKW42182- ZKW48190- ZBIQL48182- ZVKH61270- ZVKE61260

1. Remove the discharge chute.
2. Remove the right hand belt shield.
3. Remove the deck belt from the right spindle assembly sheave.
4. Remove this sheave but keep the ¼" square key and the two washers at hand for reinstallation.
5. Install the Stepped Sheave and spacer/key retainer included in the kit using the original key and washers but substituting the original 7/16" HCS with the longer version provided. An application of anti-seize is recommended.
6. Reinstall the deck belt.
7. The 5/8" hole toward the rear of the ¼" thick discharge chute mounting bar at the right end of the deck may be distorted from forming or loaded with paint. Drill out or fill this hole until it will accept a 5/8" bolt or piece of bar stock. Keep the fit close.
8. If any weld beads or the edge of the deck top project past the right end surface of the deck, these must be ground back to allow the fan assembly to fit up flush to the end of the deck.
9. Remove the 3/8" fastener, nut, and clamp from the inside front corner of the fan assembly.
10. Remove the sheave floor to expose the fan assembly belt sheave from below.
11. Loosen the nut retaining the belt guide/retainer, install the belt from the Drive Kit, retighten the nut, verify the belt clears the guide, and reinstall the sheave floor.
12. Rest the fan assembly onto the deck end and slide the pilot thru the 5/8" hole previously mentioned so that fan assembly is supported by the pilot and the ¼" stop block welded under the clamp at the front of the fan assembly.
Note: It may be necessary to swing the idler pulley away from the assembly mounting face to clear the chute mounting bar and the discharge chute mounting tab on the deck.
13. Reinstall the clamp at the front of the assembly so that the tab at the lower end of the clamp passes thru the rectangular slot at the right front corner of the mower deck, but leave the fastener loose to ease belt installation.
14. Rotate the belt idler as far forward as possible and install the belt over the top groove of the new deck sheave.
15. Tighten the clamp fastener.
16. Using a scribe or other small sharp object, transfer the mounting hole location at the rear edge of the fan assembly onto the mating vertical surface at the right rear of the mower deck and drill thru with a 25/64" drill.
17. Install the stops on the deck stop pins located at the rear of the deck then install the new belt shield.
18. Install the tube support to the main collection assembly using the 3/8" fastener provided, positioning so that the tube is 2" to 3" away from the tire.
19. Install the 7" tube to the fan assembly and the container input port using the hose clamps provided.
20. Clamp the tube to the tube support.

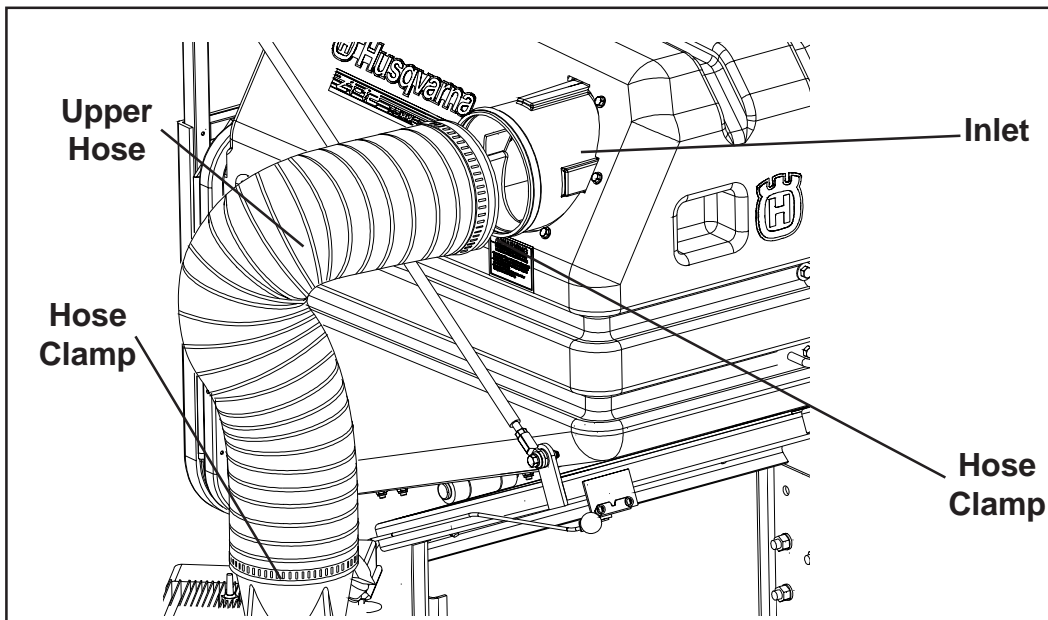
ASSEMBLY

Hose Attachment

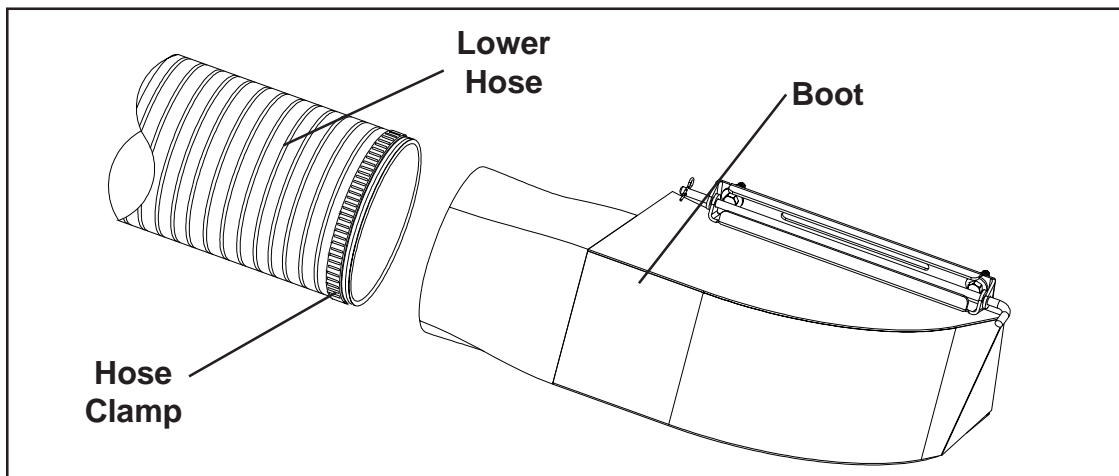
NOTE: Hoses may need to be trimmed to fit. If necessary, see the Hose Trimming section at the end of the Assembly Instructions.

Tools Required: Flat screwdriver

1. Slide one Hose Clamp over each end of the Upper Hose. Slide one end of the hose over the Vacuum discharge opening and the other end over the Inlet. Tighten the Hose Clamps to secure hose in place.



2. Slide one Hose Clamp over each end of the Lower Hose. Slide one end of the hose over the Vacuum Inlet Cover. Slide the other end over the Boot discharge opening. Tighten the Hose Clamps to secure hose in place.



ASSEMBLY

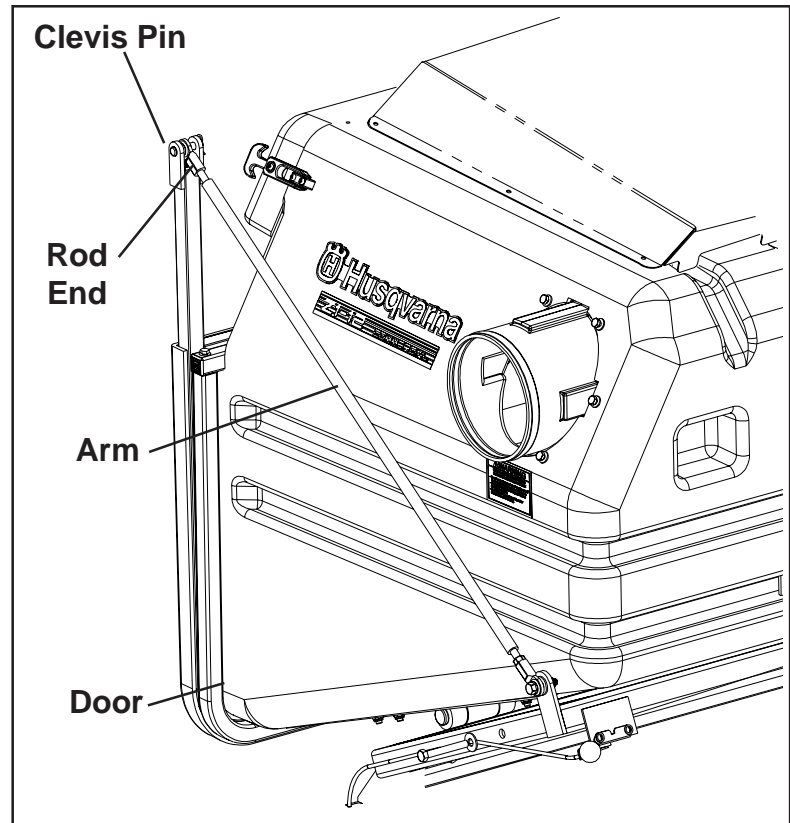
Hose Trimming

Tools Required: Utility Knife

1. Carefully measure the length needed. Remember that although the hose is flexible, **it will not stretch.**
2. Measure the same length on the hose that needs to be trimmed, and with the utility knife, cut through the webbing at the proper location.
3. Continue that cut through the webbing all the way around the hose so that it finishes just across the support coil from where the original cut was started.
4. Use the utility knife to score the support coil between the beginning and end of the web cut. Set aside the knife, and finish breaking the coil by hand, by working the scored portion back and forth until it breaks apart.

Door Tightness Adjustment

Tools Required: 1. 9/16" Wrench
2. Ratchet
3. 9/16" Socket
4. Clamps



1. Remove arms from door by removing the 3/8" x 1-3/4" clevis pins.
2. Clamp door tightly shut.
3. Adjust arm length so that rod ends on arms can be fastened to the door.
4. Fasten arms to door.
5. If door is still too tight or too loose, repeat steps 1-4 and adjust the clamp tightness until door is at desired tightness.

OPERATION

Servicing the Engine

1. Make sure that engine oil is at engine manufacturer's recommended level (refer to engine manual).
2. Fill the fuel tank. Use fresh, clean, unleaded automotive gasoline.

Pre-Start Check

1. Make sure the stop switch is in the OFF position and spark plug wire is disconnected. Pull the starter rope slowly to make certain there are no foreign objects in the blower housing.
2. Be sure the spark plug wire and cover are attached to the spark plug.

Starting the Engine

1. Turn the stop switch to the ON position.
2. Move the choke lever to the FULL CHOKE position.
3. Move the throttle lever to the FULL THROTTLE position.
4. Grasp the starter handle firmly. Pull the handle with a rapid continuous motion.
5. When the engine starts, move the choke to 1/2 choke and then to NO CHOKE position as engine warms up.


Operating the Vacuum

1. **NEVER USE THE Z1-12 WITHOUT THE VACUUM INLET COVER AND ALL HOSES SECURELY ATTACHED.**
2. Make sure all hoses are connected at both ends. Inspect hoses prior to each use.
3. Do not use the Z1-12 on slopes greater than 15 degrees.
4. The mower must be running in order to vacuum debris through the mower deck.
5. In heavy grass it may be necessary to mow and vacuum at a slower ground speed.
6. Never attempt to unclog the Z1-12 until both the mower's engine and vacuum's engine have been shut off and all moving parts have come to a complete stop.
7. Do not stand behind the vent at the rear of the Z1-12 due to the potential for small pieces of blowing debris to escape through this vent.
8. Wear eye and ear protection.
9. **TO STOP THE ENGINE:** throttle down to slow for a few seconds, then push switch to OFF. Remove any hearing protection and listen for all moving parts to come to a complete stop.

NOTE: The flywheel in the power head will coast for a few seconds after the engine is shut off before actually stopping.

SERVICE AND MAINTENANCE

Transport



WARNING

The Z1-12 container must be completely empty while driving forward onto a trailer. If the Z1-12 must be loaded onto a trailer while there is still debris in the container, the mower must be backed up onto the trailer to avoid tipping.

For best results, clean exhaust screen inside container regularly. Instructions for doing this can be found in the Service section of this manual.

Storage

Cleaning and Washing

Regular cleaning, washing, and lubricating will prolong the service of the machine.

NOTE: Use care with power washers to avoid damage to decals. Limit direct spray on these items.

DO NOT EXCEED 1000 PSI WATER PRESSURE FOR CLEANING.

1. Refer to engine manufacturer's instructions for engine storage information.
2. Clean machine.
3. Cover all scratches with touch-up paint.
4. Covered or indoor storage is recommended.

Preventative Maintenance Schedule

Item	Before Each Use	Every 5 Hours	Every 25 Hours	Every 50 Hours
Check Engine Oil Level	X	X		
Change Engine Oil			X	
Change Air Cleaner Element			X	
Replace Spark Plug				X
Inspect/Clean Exhaust Screen	X	X		
Check/Tighten Nuts & Bolts	X			
Check/Tighten Hoses	X			
Turn Hose End to End			X	
Rotate Hose				X
Clean Machine				X

SERVICE AND MAINTENANCE

Engine Service and Maintenance

Follow the engine manufacturer's maintenance instructions. Should any malfunction occur with the engine during the warranty period, take it to an Authorized Service Dealer. **DO NOT** tear down the engine, as this may void the Engine Manufacturer's Warranty.

NOTE: Refer to engine manufacturer's owner's manual for all engine service information.

Caring For Vacuum Hoses

1. Inspect hoses before each use. If hoses have excessive wear, tears, or punctures, replace immediately.
2. To prolong the life of the hose, periodically rotate hose and turn hose end to end. Refer to Preventative Maintenance Schedule in this manual.
3. Avoid twists and sharp turns in the hoses, as they will increase wear on the hoses.
4. Avoid dragging the lower hose along the sides of buildings or other hard surfaces.

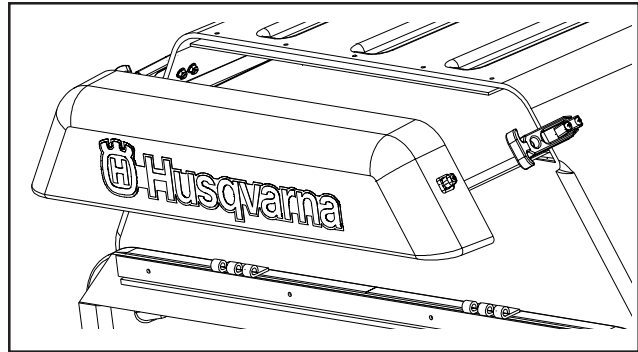
Cleaning Exhaust Screen

The exhaust screen on the Z1-12 is located inside the container. For best results, clean exhaust screen regularly.

Cleaning Instructions

1. Shut off all engines.
2. Release the two (2) rubber latches on the sides of the filter cover, and slide screen out.
3. Clean the screen, and replace.

DO NOT USE THE Z1-12 WITHOUT EXHAUST SCREEN SECURELY IN PLACE.



SERVICE AND MAINTENANCE

Troubleshooting Guide

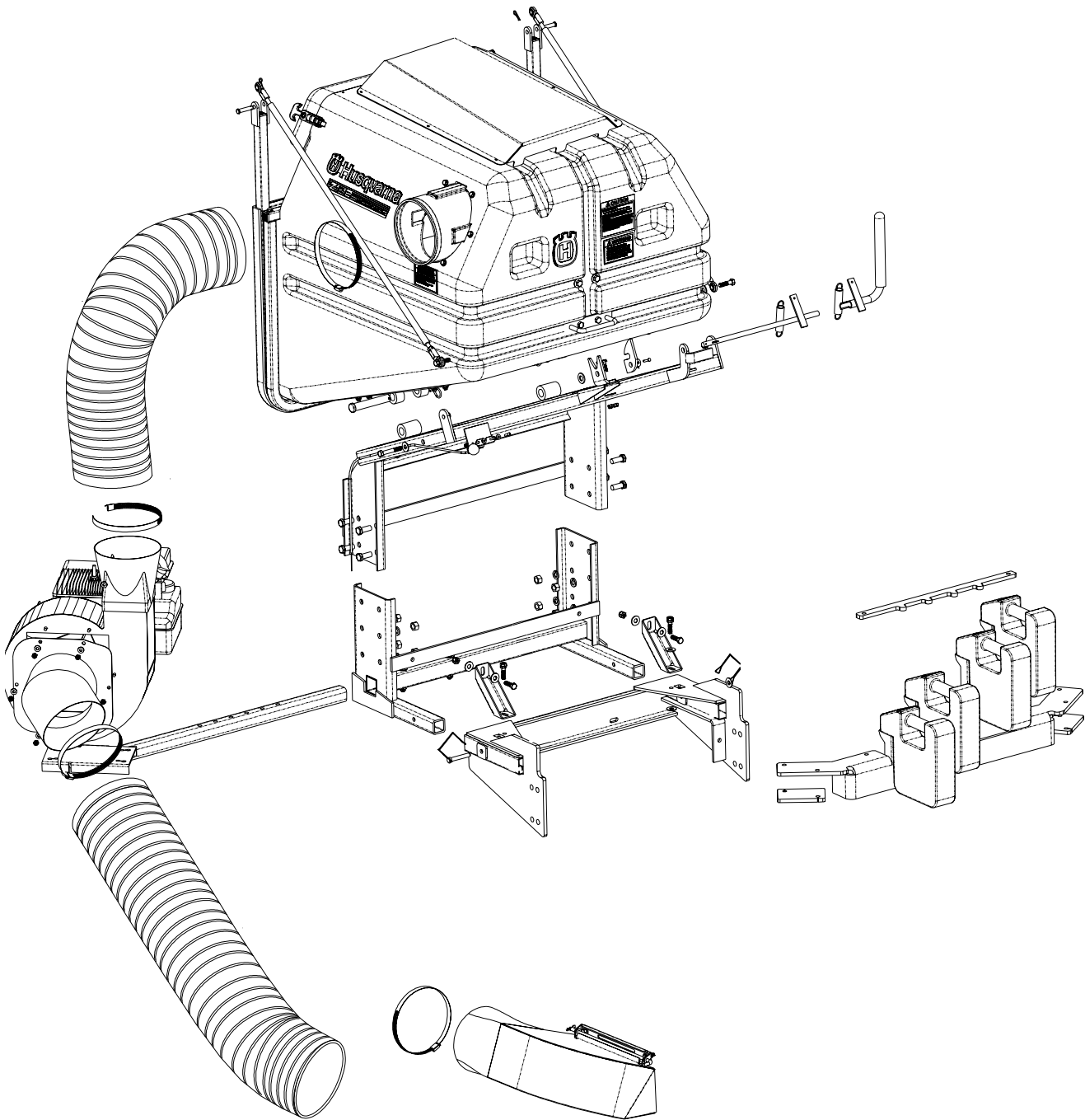


DANGER

Before servicing unit, wait for all moving parts to come to a complete stop. Turn engine off and remove the spark plug wire.

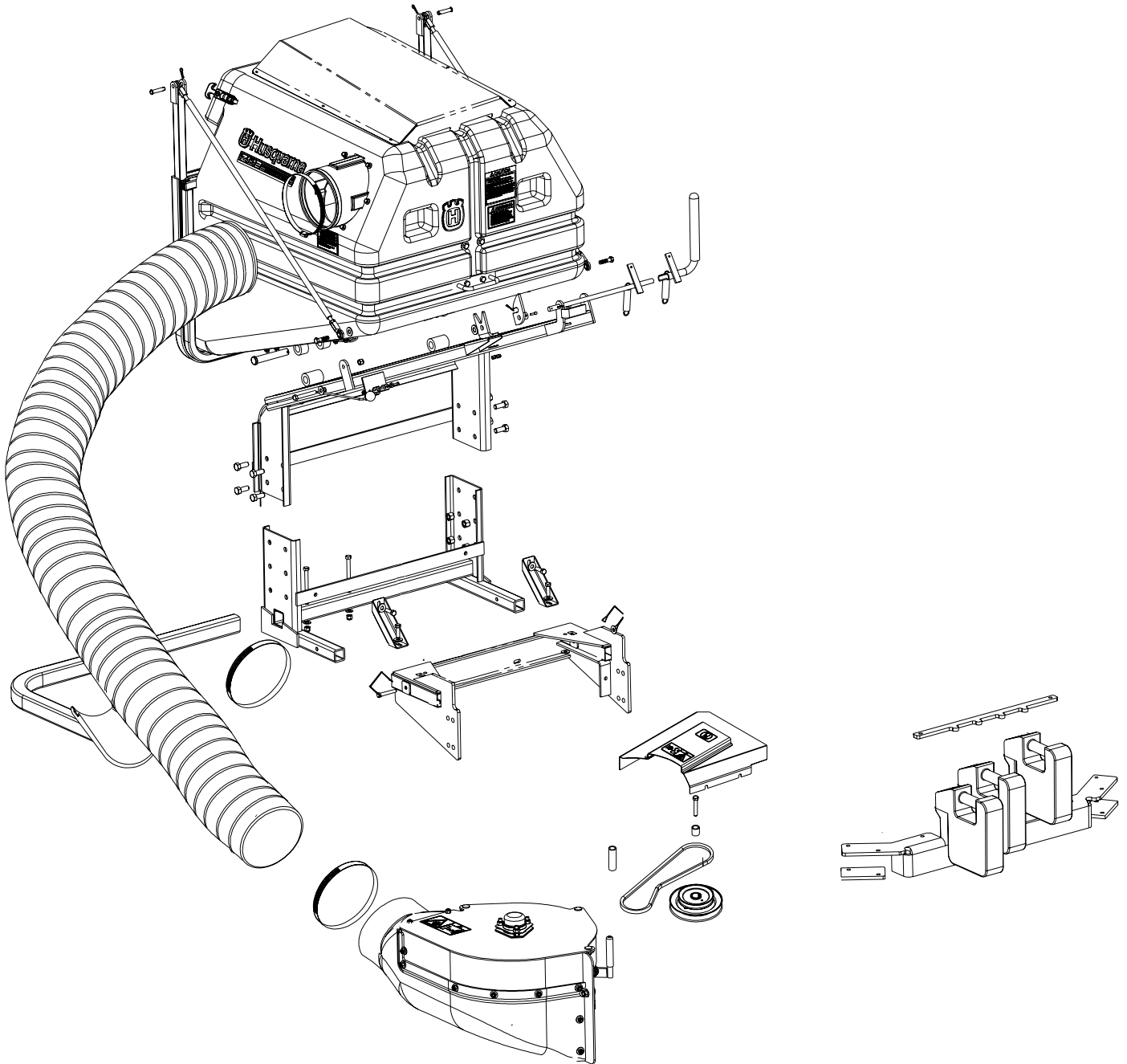
PROBLEM	POSSIBLE CAUSE	CORRECTION
Engine Does Not Start.	<ol style="list-style-type: none"> 1. Spark plug wire disconnected. 2. Engine ON/OFF switch in OFF position. 3. Fuel tank empty. 4. Stale gasoline. 5. Dirty air filter. 	<ol style="list-style-type: none"> 1. Reconnect wire. 2. Put switch in ON position. 3. Add gasoline. 4. Drain gasoline and add fresh gasoline. 5. Clean or replace.
Engine Runs Poorly.	<ol style="list-style-type: none"> 1. Bad spark plug. 2. Dirty air filter. 3. Incorrect choke setting. 4. Stale gasoline. 5. Dirt or water in fuel tank. 	<ol style="list-style-type: none"> 1. Clean or replace. 2. Clean or replace. 3. Put choke in correct setting. 4. Drain gasoline and add fresh gasoline. 5. See engine service dealer.
Engine Overheats.	<ol style="list-style-type: none"> 1. Carburetor out of adjustment. 2. Oil level is low. 	<ol style="list-style-type: none"> 1. See engine service dealer. 2. Check and add oil.
Loss of Vacuum.	<ol style="list-style-type: none"> 1. Vacuum inlet clogged. 2. Container full. 3. Engine not reaching full RPM. 4. Fan blades bent or broken. 	<ol style="list-style-type: none"> 1. Remove hose and clean inlet. 2. Inspect and empty. 3. See "Engine Runs Poorly" above. 4. Replace/repair impeller.
Unusual vibration or noise.	<ol style="list-style-type: none"> 1. Solid object jammed in unit. 2. Engine cylinder shaft or crankshaft bent or damaged. 3. Loose engine mounting bolts/nuts. 4. Loose or missing bolts on unit. 5. Engine shaft bearings damaged. 	<ol style="list-style-type: none"> 1. Check and remove any obstruction. 2. See engine service dealer. 3. Tighten bolts/nuts. 4. Tighten or replace bolts. 5. See engine service dealer.
Unit difficult to close.	<ol style="list-style-type: none"> 1. Door too tight. 2. Obstructions keeping door from completely closing. 	<ol style="list-style-type: none"> 1. Adjust arm tightness 2. Clear obstructions.
Door doesn't shut tightly.	<ol style="list-style-type: none"> 1. Door tightness not adjusted correctly. 	<ol style="list-style-type: none"> 1. Adjust arm tightness

AUXILIARY ENGINE ASSEMBLY



NOTE: Your Front Weight Bar, Hitch, and Boot may look different from those shown in this diagram.

SPINDLE DRIVE ASSEMBLY

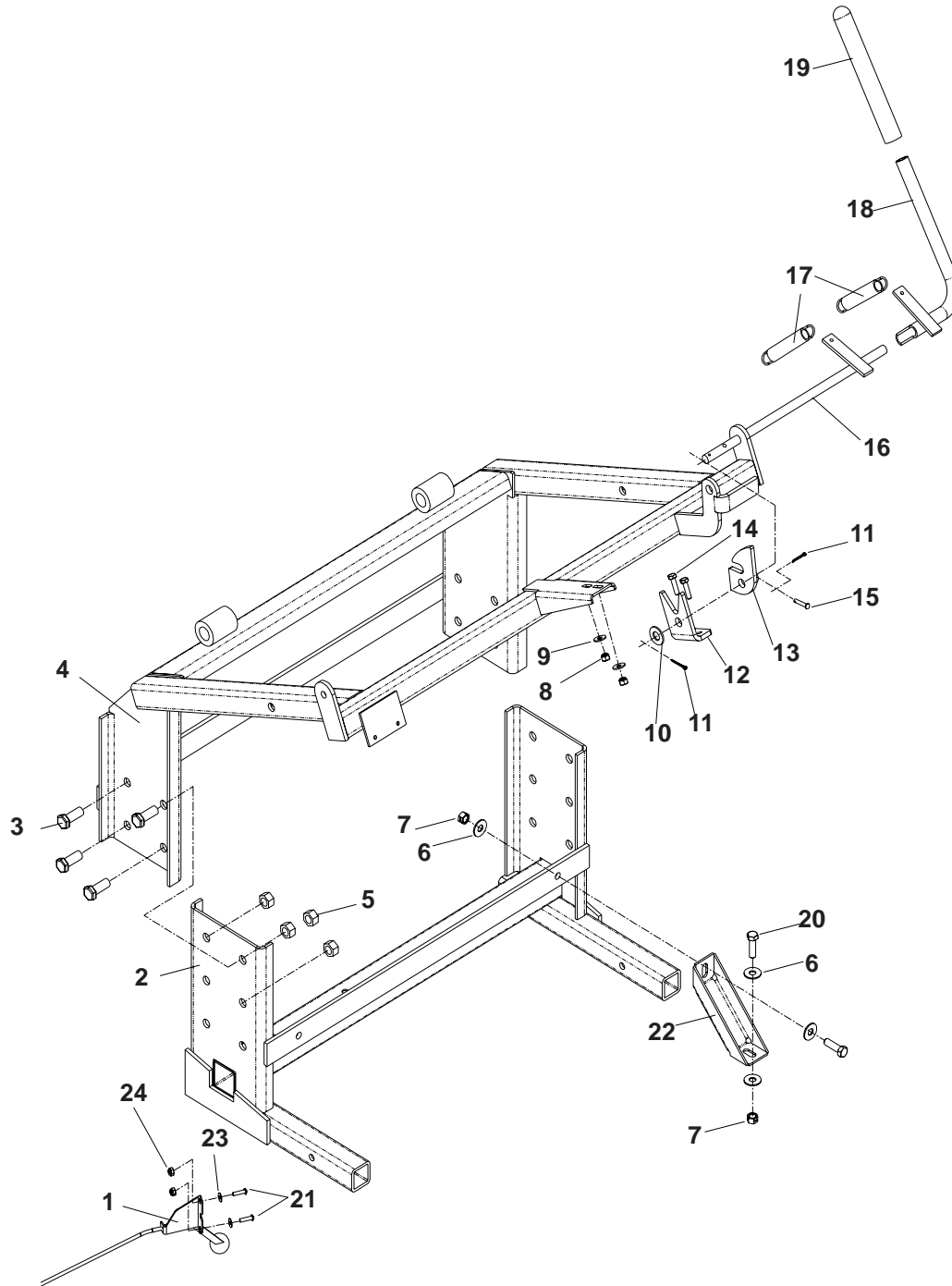


NOTE: Your Front Weight Bar and Hitch may look different from those shown in this diagram.

CONTAINER ASSEMBLY

ITEM	PART NO.	QTY	DESCRIPTION
1	539108969	1	CONTAINER
2	540200414	1	EXHAUST ASM.
3	540200691	2	CLEVIS PIN, 1/4 X 2 3/4
4	540099082	4	HAIR PIN, #13
5	540200401	1	DOOR ASM.
6	540200692	2	CLEVIS PIN, 3/8 X 1 3/4
7	540030425	4	ROD END
8	540200690	4	PLUG
9	540000224	2	NUT, 3/8-24
10	540200520	2	ARM
11	540099008	6	BOLT, 1/4-28 X 1
12	540000405	14	WASHER, 1/4
13	540200408	1	INLET
14	540097076	1	HOSE CLAMP
15	540200478	2	LATCH
16	540200641	6	SCREW, 10-24 X 1 1/4, P.T.H.
17	540000134	2	BOLT, 1/4-20 X 2
18	540108134	1	DOOR SEAL KIT (CONTAINS 3 SEALS)
19	540099072	6	NUT, 1/4-20, NYLOC
20	540099065	4	NUT, 3/8-16, NYLOC
21	540200688	1	BACK PLATE
22	540200695	1	LATCH
23	540000168	4	BOLT, 3/8-16 X 1
24	540000417	2	WASHER, 3/8
25	540200423	2	LATCH BASE
26	539108309	1	HOOD
27	539108535	6	SCREW #10-24 X 3/4 STD RD
28	539976977	6	NUT #10-24, NYLOC
	540002004	6	NUT, #10-24, NYLOC (NOT SHOWN)

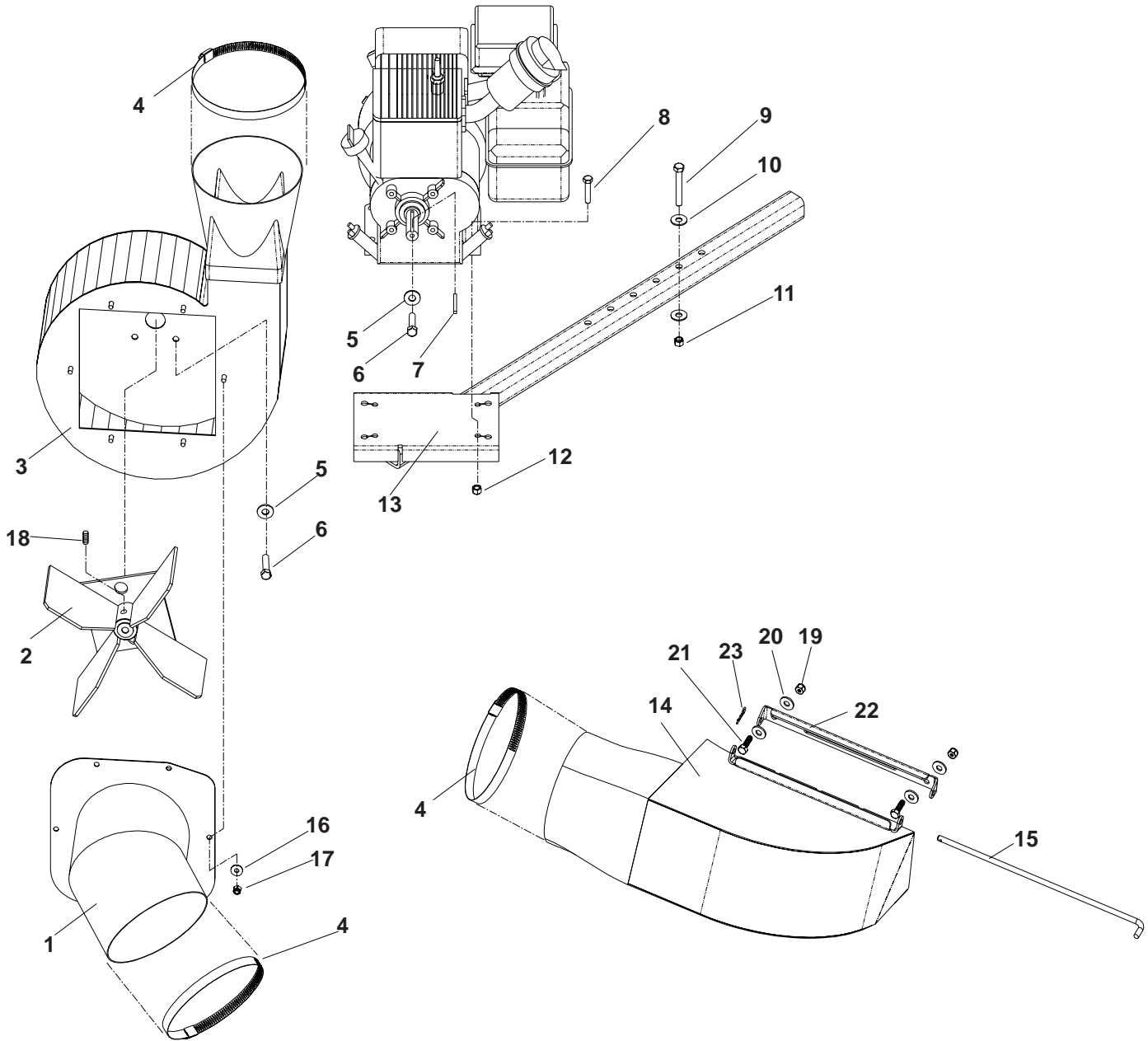
FRAME ASSEMBLY



FRAME ASSEMBLY

ITEM	PART NO.	QTY	DESCRIPTION
1	540061651	1	THROTTLE CABLE
2	540062072	1	LOWER FRAME
3	540099069	8	BOLT, 1/2-13 X 1 1/4
4	540200510	1	UPPER FRAME
5	540093082	8	NUT, 1/2-13, NYLOC
6	540000415	12	WASHER 3/8 FLAT
7	540099065	4	NUT, 3/8-16, NYLOC
8	540099072	2	NUT, 1/4-20, NYLOC
9	540000405	4	WASHER, 1/4
10	540000425	1	WASHER, 1/2
11	540003585	2	COTTER PIN, 3/32 X 3/4
12	540200423	1	LATCH BASE
13	540200708	1	LATCH CATCH
14	540099008	2	BOLT, 1/4-20 X 1
15	540000382	1	CLEVIS PIN, 3/16 X 1
16	540200710	1	LATCH ROD
17	540010195	2	SPRING
18	540200712	1	RELEASE LEVER
19	540061481	1	GRIP
20	540099020	4	BOLT, 3/8-16 X 1 1/4
21	540001062	2	SCREW, #10-24 X 3/4, RD. HD., SLOTTED
22	540061532	2	HITCH BRACKET
23	540000403	2	WASHER #10 FLAT
24	540002004	2	NUT, #10-24, NYLOC

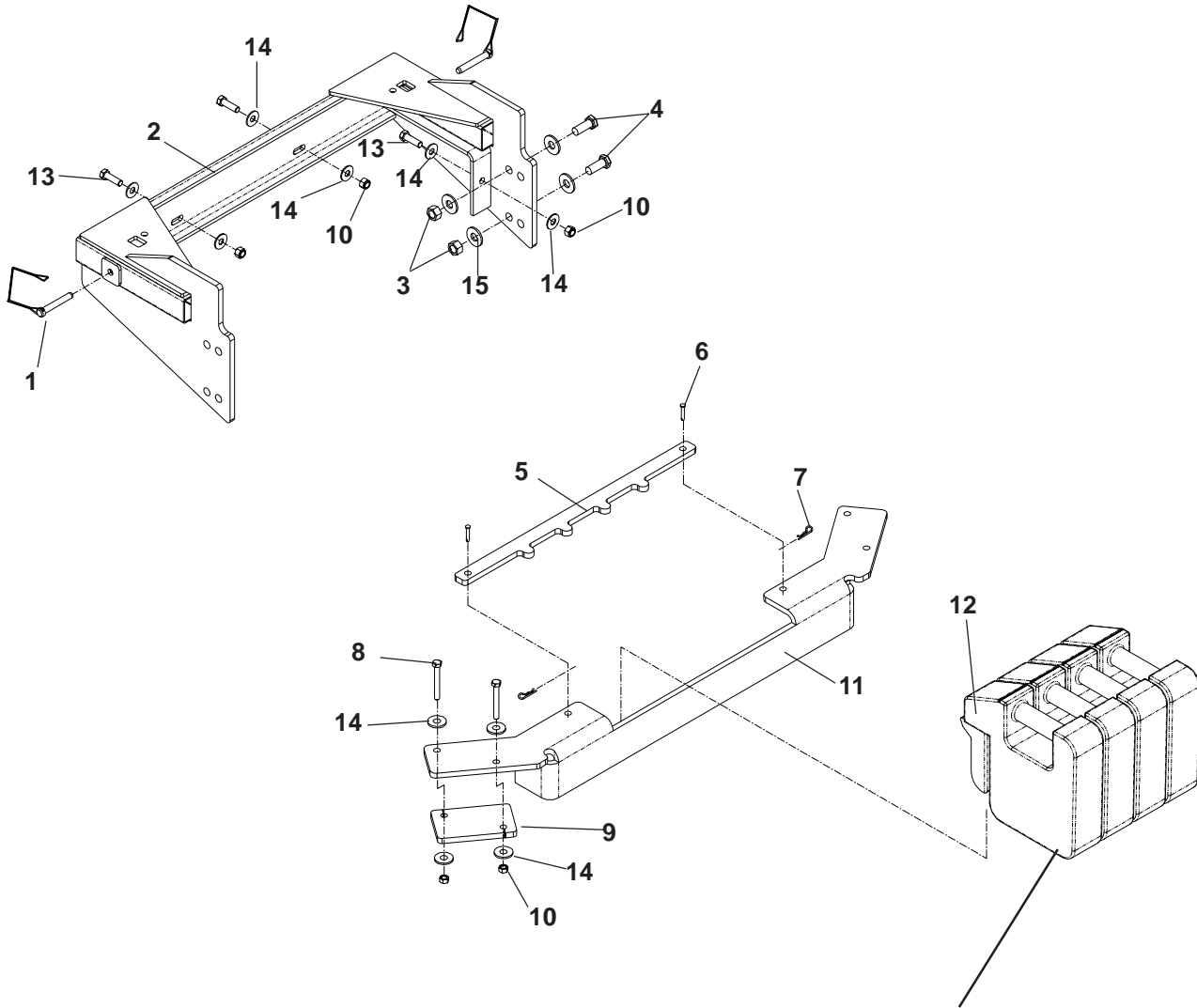
POWER UNIT ASSEMBLY



POWER UNIT ASSEMBLY

ITEM	PART NO.	QTY	DESCRIPTION
1	540092705	1	INLET, BLOWER HSG.
2	540094005	1	IMPELLER
3	540094004	1	BLOWER HSG.
4	540097076	4	HOSE CLAMP
5	540099001	5	WASHER 5/16 SPRING
6	540099012	5	BOLT, 5/16-24 X 3/4
7	540099002	1	KEY, 3/16 X 1 3/4 SQ.
8	540099015	4	BOLT, 5/16-18 X 1 1/2
9	540099611	2	BOLT, 3/8-16 X 2 1/2
10	540000415	4	WASHER, 3/8
11	540099065	2	NUT, 3/8-16, NYLOC
12	540099079	4	NUT, 5/16-18, NYLOC
13	540062092	1	ENGINE MOUNT
14	540200671	1	BOOT, GEN II
	540200818	1	BOOT, GEN I
15	540093814	1	HINGE PIN, 5/16 X 14"
16	540099074	5	WASHER, 1/4
17	540099072	6	NUT, 1/4-20, NYLOC
18	540099027	2	SETSCREW 3/8 X .375
19	540099079	2	NUT, 5/16-18, NYLOC
20	540000413	4	WASHER, 5/16
21	540099077	2	BOLT, 5/16-18 X 1
22	540200863	1	BRACKET
23	540099082	1	COTTER PIN, #13
	540097136	1	UPPER HOSE (NOT SHOWN)
	540097154	1	LOWER HOSE (NOT SHOWN)

HITCH ASSEMBLY

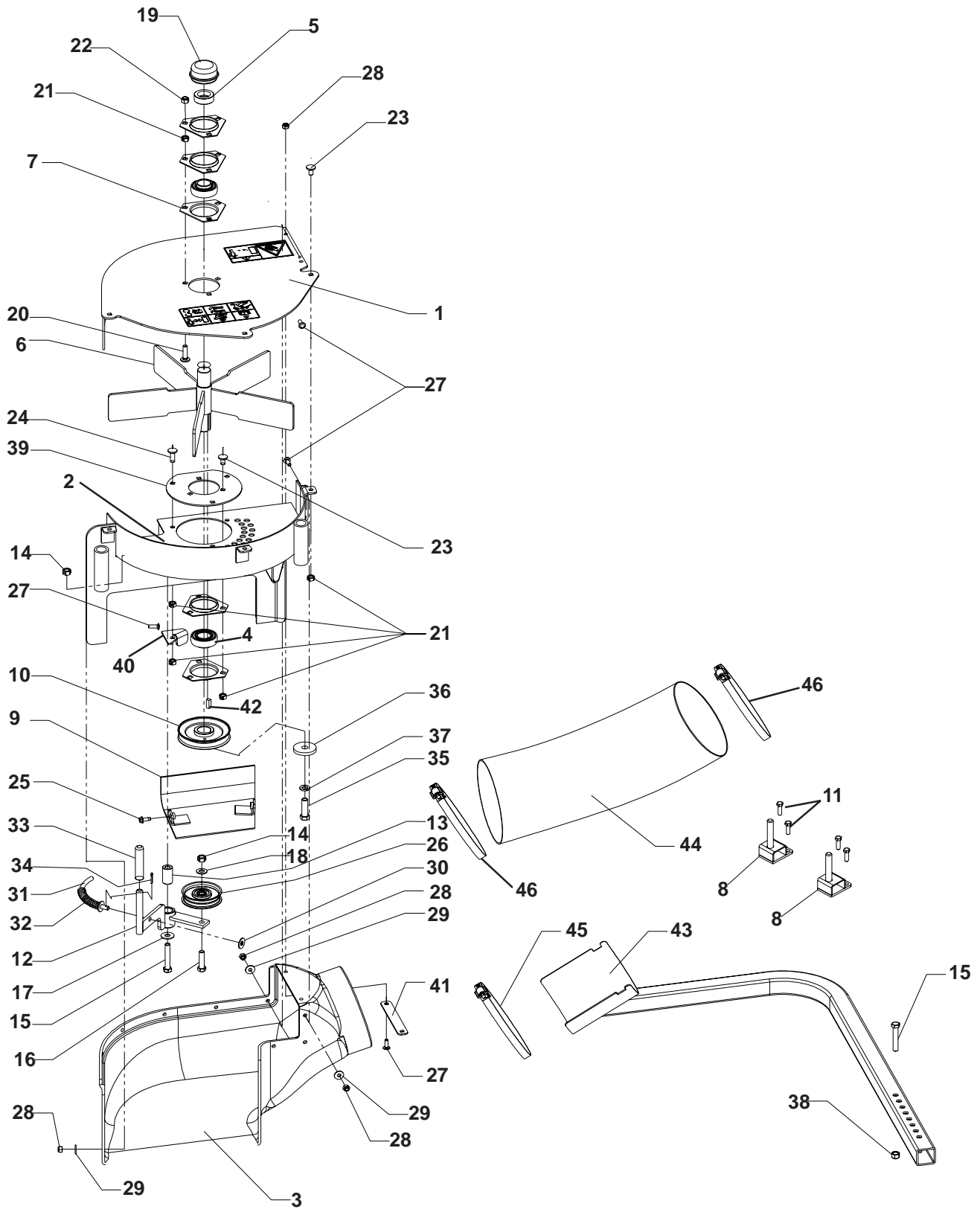


Quantity 3 for Spindle Drive Units
Quantity 4 for Auxiliary Engine Units

HITCH ASSEMBLY

ITEM	PART NO.	QTY	DESCRIPTION
1	540099693	2	PIN, WIRE LOCK
2	540200749	1	HITCH, GEN II
	540200828	1	HITCH, GEN I
3	540093082	4	NUT 1/2 NYLOC
4	540099031	4	BOLT, 1/2-13 X 1 1/2
5	540092731	1	FRONT WEIGHT HOLD BAR
6	540099668	2	CLEVIS PIN, 3/8 X 1
7	540099616	2	HAIR PIN, #11
8	540099113	4	BOLT, 3/8-16 X 3 1/2
9	540092519	2	FRONT WEIGHT CLAMP
10	540099065	8	NUT, 3/8-16, NYLOC
11	540020255	1	FRONT WEIGHT BAR
12	540092531	3-4	FRONT WEIGHT
13	540099020	4	BOLT, 3/8-16 X 1 1/4
14	540000415	16	WASHER, 3/8
15	540000425	8	WASHER, 1/2

SPINDLE DRIVE ASSEMBLY

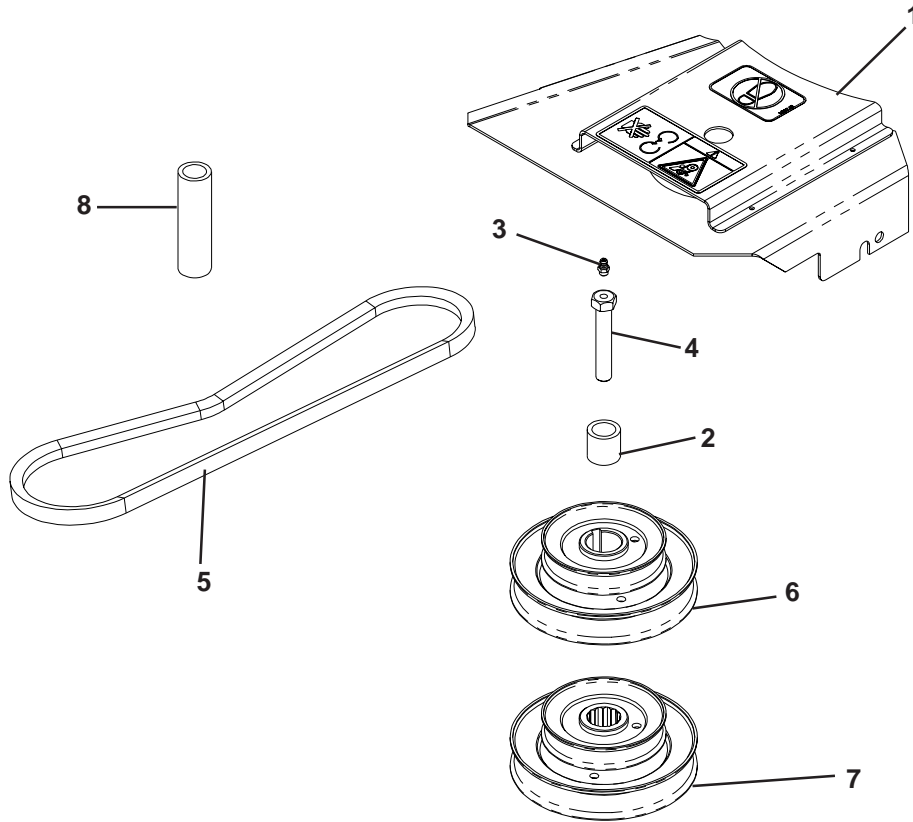


SPINDLE DRIVE ASSEMBLY

ITEM	PART NO.	QTY	DESCRIPTION
1	(539) 106752	1	FAN COVER W/DECALS
2	(539) 108941	1	UPPER HOUSING
3	(539) 109900	1	LOWER HOUSING
4	(539) 106786	2	BEARING W/O COLLAR
5	(539) 106786	1	LOCKING COLLAR
6	(539) 106707	1	FAN WLDMT.
7	(539) 102691	5	FLANGETTE
8	(539) 108944	2	BLOWER PIN WELDMENT
9	(539) 108301	1	SHEAVE FLOOR
10	(539) 106713	1	SHEAVE, 4"
11	(539) 976941	4	HCS 3/8-16 X 1 1/4
12	(539) 106715	1	IDLER ARM
13	(539) 101836	1	SLEEVE BUSHING
14	(539) 990546	2	NUT 3/8 CTR. LOCK
15	(539) 990629	2	HCS 3/8 X 2.25
16	(539) 990655	1	HCS 3/8 X 1.50
17	(539) 990517	1	WASHER 3/8 FLAT
18	(539) 990122	1	WASHER 3/8 SAE
19	(539) 102535	1	GREASE CAP
20	(539) 100472	3	RHSNB 5/16 X 1.25
21	(539) 990184	13	NUT 5/16 CTR. LOCK
22	(539) 990717	3	NUT 5/16 NYLOC
23	(539) 990799	8	RHSNB 5/16 X .625 SHORT NECK
24	(539) 990208	1	RHSNB 5/16 X 1.00
25	(539) 990362	2	SCREW 1/4 X .625 SELF TAP
26	(539) 106721	1	IDLER
27	(539) 990074	16	RHSNB 1/4 X .75 SHORT NECK
28	(539) 976978	16	NUT 1/4 NYLOC
29	(539) 990598	14	WASHER 1/4 FLAT
30	(539) 990188	1	WASHER 5/16 FLAT SAE
31	(539) 106801	1	SPRING ROD
32	(539) 106720	1	SPRING
33	(539) 101050	1	VINYL GRIP
34	(539) 990037	1	COTTER PIN 3/32 X .750
35	(539) 100141	1	HCS 7/16F X 1.5
36	(539) 106504	1	HEAVY WASHER
37	(539) 990247	1	WASHER 7/16 LOCK
38	(539) 976979	9	NUT 3/8 NYLOC
39	(539) 106809	1	BEARING PLATE
40	(539) 106811	1	BELT GUIDE
41	(539) 106812	1	BACKING
42	(539) 102067	1	KEY 1/4 X .75 SQ.
43	(539) 106751	1	SUPPORT
44	(539) 106748	1	HOSE
45	(539) 097076	1	HOSE CLAMP
46	(539) 109901	2	OVER CENTER BAND

DRIVE KIT ASSEMBLY

- (539) 108960 - 42 INCH DECK
- (539) 108961 - 48 INCH DECK
- (539) 108962 - 52 INCH DECK
- (539) 108963 - 61 INCH DECK



ITEM	PART NO.	QTY	DESCRIPTION
1	(539) 108950	1	42 SHIELD
	(539) 108953	1	48 SHIELD
	(539) 108958	1	52 SHIELD
	(539) 108959	1	61 SHIELD
2*	(539) 106739	1	SPACER
3	(539) 976998	1	ZERK
4	(539) 108951	1	HCS 7/16 X 2.5, SPEC.
5	(539) 106723	1	BELT-42
	(539) 106724	1	BELT-48
	(539) 106725	1	BELT-52
	(539) 106726	1	BELT-61
6	(539) 106744	1	STACKED SHEAVE 42-48
	(539) 106745	1	STACKED SHEAVE 52
	(539) 106746	1	STACKED SHEAVE 61
7	(539) 108946	1	DOUBLE HEX STACKED SHEAVE 42-48
	(539) 108947	1	DOUBLE HEX STACKED SHEAVE 52
	(539) 108948	1	DOUBLE HEX STACKED SHEAVE 61
8	(539) 106787	2	STOP - USED ON 42" & 48" ONLY

*NOTE: ITEM 2 USED ON KEYED SHAFT ASSEMBLIES ONLY.

 **Husqvarna**