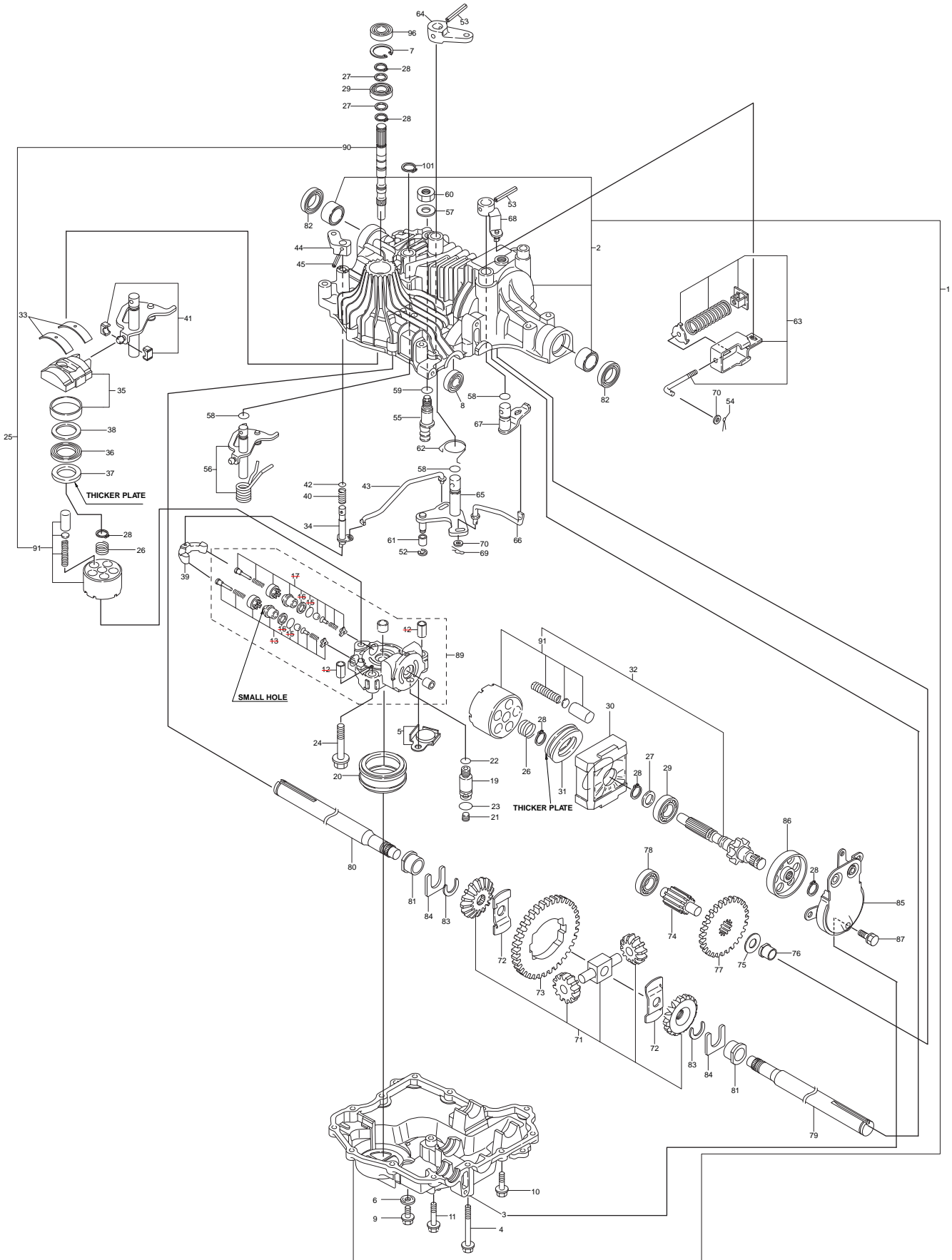


K61

Spare parts
Ersatzteile
Pièces détachées
Reserve onderdelen
Repuestos
Reservdelar



| B | Pos | Husqvarna no. | Description |
|----------|------------|----------------------|-----------------------------|
| | 1 | 506 93 76-01 | K61 HSQ-EU |
| | 2 | 535 41 49-06 | UPPER CASE KIT |
| | 3 | 535 41 49-07 | LOWER CASE K61 |
| | 4 | 535 41 46-83 | "SCREW, CAP 8*75" |
| | 5 | 535 41 49-08 | MAGNET CASE K60 |
| | 6 | 506 95 75-01 | SEAL |
| | 7 | 535 40 28-50 | RING |
| | 8 | 506 95 72-01 | SEAL |
| | 9 | 535 41 47-43 | BOLT |
| | 10 | 535 40 28-28 | TAPPING SCREW |
| | 11 | 535 41 49-09 | SCREW |
| | 19 | 535 41 49-10 | CONNECTOR |
| | 20 | 535 41 47-16 | FILTER K61 |
| | 21 | 535 41 47-55 | PLUG |
| | 22 | 535 41 47-52 | O-RING |
| | 23 | 535 40 28-14 | O-RING |
| | 24 | 535 41 49-11 | BOLT |
| | 25 | 535 41 49-12 | PUMP SHAFT |
| | 26 | 535 41 46-85 | PUMP SPRING |
| | 27 | 535 41 49-13 | WASHER 15*20*1 |
| | 28 | 535 40 28-81 | SNAP RING S15 |
| | 29 | 535 40 28-71 | BEARING |
| | 30 | 535 41 49-14 | "HOUSING K61,K65" |
| | 31 | 535 41 46-82 | "BEARING, THURST" |
| | 32 | 535 41 49-15 | MOTOR SHAFT 15 |
| | 33 | 535 41 46-86 | METAL THRUST |
| | 34 | 535 41 49-16 | BYPASS SHAFT |
| | 35 | 535 41 49-17 | SWASH PLATE COMP |
| | 36 | 535 41 46-87 | THRUST BEARING K81106 |
| | 37 | 535 41 46-88 | THRUST PLATE A |
| | 38 | 535 41 46-89 | THRUST PLATE B |
| | 39 | 535 41 49-18 | ARM C |
| | 40 | 535 40 28-47 | SPRING 25 |
| | 42 | 535 41 49-19 | O-RING |
| | 43 | 535 41 49-20 | BYPASS ROD |
| | 44 | 506 95 61-01 | ARM VALVE RELEASE |
| | 45 | 535 41 47-03 | ROLL PIN |
| | 52 | 535 41 49-21 | SNAP RING |
| | 53 | 535 41 49-22 | PIN-ROLL |
| | 54 | 535 41 49-23 | PIN 2.0 X 20 |
| | 55 | 535 41 49-24 | FULCRUM 10 |
| | 57 | 535 40 28-13 | WASHER |
| | 58 | 535 41 46-19 | O-RING |
| | 59 | 535 40 28-15 | O-RING |
| | 60 | 506 95 66-01 | LOCK NUT |
| | 61 | 535 41 49-25 | BUSHING B |
| | 62 | 535 41 49-26 | RETURN BRAKE SPRING |
| | 63 | 506 95 65-01 | BRAKE ROD |
| | 64 | 535 41 49-27 | BRAKE ARM |
| | 65 | 535 41 49-28 | BRAKE SHAFT |
| | 66 | 535 41 49-29 | BRAKE ROD |
| | 67 | 535 41 49-30 | BRAKE ARM A |
| | 68 | 506 95 60-01 | BRAKE ARM B |
| | 69 | 535 41 49-31 | PIN |
| | 70 | 535 41 46-80 | WASHER |
| | 71 | 535 41 49-32 | DIFFERENTIAL GEAR KIT |
| | 72 | 535 41 49-33 | THRUST WASHER |
| | 73 | 535 41 49-34 | FINAL GEAR 55 |
| | 74 | 535 41 49-35 | FINAL PINION SHAFT |
| | 75 | 535 41 49-36 | WASHER |
| | 76 | 535 41 49-37 | BUSHING 15 |
| | 77 | 535 41 49-38 | FINAL GEAR SHAFT 41 |
| | 78 | 535 41 49-39 | BEARING 6203 |
| | 79 | 535 41 49-40 | AXLE SHAFT LEFT (H.L.#840) |
| | 80 | 535 41 49-41 | AXLE SHAFT RIGHT (H.L.#839) |
| | 81 | 535 41 49-42 | BUSHING 22 |
| | 82 | 535 40 28-10 | SEAL (S 25.4*42*8) |
| | 83 | 535 41 49-43 | RING 20 |
| | 84 | 535 41 49-44 | THRUST WASHER |
| | 85 | 506 95 63-01 | BRAKE BAND |
| | 86 | 506 95 64-01 | BRAKE DRUM |
| | 87 | 535 41 49-45 | BOLT W/WASHEER 8*20 |
| | 89 | 535 41 46-93 | CENTER CASE KIT |
| | 102 | 535 41 49-46 | INPUT SHEAVE |

Correction:

Pos

89 535 41 49-49

New 91

535 40 28-74

Cylinder Block Kit