

T 85BS

T 85RS

T 85HX

Spare parts

Ersatzteile

Pièces détachées

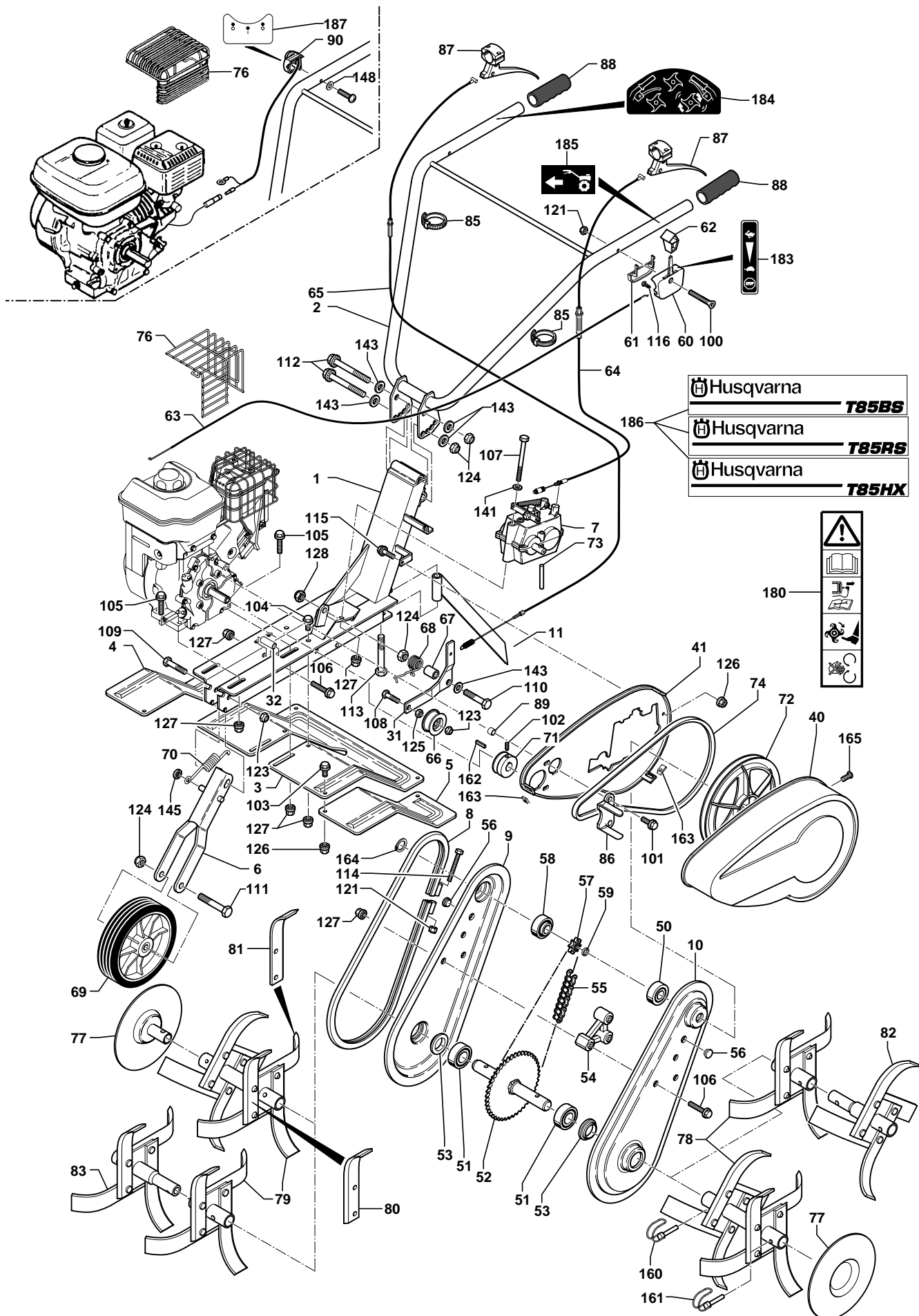
Reserve onderdelen

Repuestos

Reservdelar

REPAIR PARTS

TILLER - MODEL NO. T 85BS, T 85RS, T 85HX



REPAIR PARTS

TILLER - MODEL NO. T 85BS, T 85RS, T 85HX

KEY NO.	PART NO.	DESCRIPTION	DÉSIGNATION	QTY / QTÉ		
				T85HX	T85BS	T85RS
	519 65 30-81	Complete casing, flanged (Orange)	Carter complet à jonc (Orange)			
1	531 00 82-00	Chassis (Grey 627)	Châssis (Gris 627)	1	1	1
2	531 00 82-01	Handlebars (Grey 627)	Guidon (Gris 627)		1	1
	531 00 94-14	Handlebars GX 160 (Grey 627)	Guidon GX 160 (Gris 627)	1		
3	531 00 82-03	Protective cover (Grey 627)	Tôle protection centrale (Gris 627)			
4	531 00 82-04	R.H.S guard extension (Grey 627)	Extension droite (Gris 627)	1	1	1
5	531 00 82-05	L.H.S guard extension (Grey 627)	Extension gauche (Gris 627)	1	1	1
6	519 65 34-60	Front wheel bracket (Black)	Supp. roue transport (Noir)	1	1	1
7	519 65 30-92	Reversing gearbox	Réducteur M. ar. mécanique	1	1	1
8	519 65 30-43	Flange (Orange)	Jonc (Orange)	1	1	1
9	519 65 30-41	Transmission housing, RHS	Joue carter eco droite	1	1	1
10	519 65 30-42	Transmission housing, LHS	Joue carter eco gauche	1	1	1
11	531 00 82-06	Key	Éperon	1	1	1
31	519 65 34-07	Clutch lever	Levier embrayage	1	1	1
32	519 65 34-24	Spacer	Entretoise châssis	1	1	1
40	531 00 82-07	Belt cowl (Orange)	Capot courroie (Orange)	1	1	1
41	531 00 82-08	Inner stile belt cover	Cache intérieur	1	1	1
50	519 00 26-31	Ball-race	Roulement	1	1	1
51	519 65 30-53	Ball-race	Roulement	2	2	2
52	519 65 30-07	Blade shaft	Arbre de travail	1	1	1
53	531 00 85-76	Joint	joint de carter	2	2	2
54	519 65 30-06	Spacer	Entretoise plastique	1	1	1
55	519 65 30-09	Chain	Chaîne	1	1	1
56	519 65 33-91	Grease cap	Bouchon	2	2	2
57	519 65 30-57	Cogwheel	Pignon 8 dts	1	1	1
58	531 00 85-46	Shouldered ball-race	Roulement épaulé	1	1	1
59	519 65 30-94	Spacer	Entretoise carter	1	1	1
60	519 65 34-59	Accelerator lever	Manette gaz	1	1	1
61	519 64 94-71	Accelerator lever housing	Cache manette	1	1	1
62	516 83 65-15	Accelerator knob	Embout manette gaz	1	1	1
63	531 00 85-79	Throttle cable (BS5,5hp)	Cable gaz (BS5,5hp)		1	
	519 65 31-02	Throttle cable (GX160)	Cable gaz (GX160)	1		
	531 00 94-09	Throttle cable (EX13/EX17)	Cable gaz (EX13/EX17)			1
64	531 00 82-09	Reverse gear cable	Cable inversion vitesse	1	1	1
65	531 00 82-10	Clutch cable	Cable embrayage	1	1	1
66	519 65 34-57	Runner	Galet embrayage	1	1	1
67	519 65 34-51	Spacer	Entretoise levier embrayage	1	1	1
68	519 65 30-90	Spring	Ressort embrayage	1	1	1
69	519 65 30-00	Front wheel	Roue avant	1	1	1
70	519 65 02-60	Spring	Ressort roue transport	1	1	1
71	519 65 30-68	Motor pulley Forward/Reverse gear	Poulie moteur Mav-Marr	1	1	1
72	519 65 30-60	Transmission pulley	Poulie transmission	1	1	1
73	519 65 30-67	Pulley shaft	Axe fixation poulie	1	1	1
74	519 65 30-58	Forward drive belt	Courroie Marr	1	1	1
76	531 00 85-82	Exhaust grill (Robin EX13 / EX17)	Grille échappement (Robin EX13 / EX17)			1
	531 00 94-18	Exhaust grill (GX 160)	Grille échappement (GX 160)	1		
77	519 65 33-62	Disk	Disque	2	2	2
78	519 65 30-28	Twin rotating blades 40x4 L	Étoile départ double 40x4 G	1	1	1
	531 00 82-11	Simple rotating blades 40x4 L	Étoile départ simple 40x4 G			
79	519 65 30-29	Twin rotating blades 40x4 R	Étoile départ double 40x4 D	1	1	1
	531 00 82-13	Simple rotating blades 40x4 R	Étoile départ simple 40x4 D			
80	519 65 34-47	Blade, LH	Couteau gauche			
81	519 65 34-48	Blade, RH	Couteau droit			
82	531 00 82-14	Additional blade assembly, LH	Étoile addit. dém. gauche			
83	531 00 82-15	Additional blade assembly, RH	Étoile addit. dém. droite			
85	519 65 32-32	Collar	Collier	2	2	2
86	531 00 85-77	Drive-belt guide	Guide courroie	1	1	1
87	519 65 40-65	Lever	Levier	2	2	2
88	519 00 01-13	Grip	Poignée PVC	2	2	2
89	531 00 82-16	Spacer	Entretoise cache intérieur	2	2	2
90	531 00 85-58	Switch engine cut-off	Switch arrêt moteur	1		
100	519 65 34-61	Screw TF Hc M6x45 Z	Vis TF Hc M6x45 Z			
101	519 65 34-12	Screw 5/16 TH24 UNF lg 25, notched shoulder	Vis 5/16 TH24 UNF lg 25 emb. crantée			
102	519 65 30-20	Screw St Hc M8x16 N	Vis St Hc M8x16 N			
103	519 65 34-35	Screw H M6x16 Z, notched shoulder	Vis H M6x16 Z embase crantée			
104	531 00 82-02	Screw H M8x16 Z, notched shoulder	Vis H M8x16 Z embase crantée			
105	519 65 34-13	Screw H M8x40 Z, notched shoulder	Vis H M8x40 Z embase crantée			
106	519 65 34-63	Screw H M8x50 Z, notched shoulder	Vis H M8x50 Z embase crantée			

REPAIR PARTS

TILLER - MODEL NO. T 85BS, T 85RS, T 85HX

KEY NO.	PART NO.	DESCRIPTION	DÉSIGNATION	QTY / QTÉ		
				T85HX	T85BS	T85RS
107	519 65 30-45	Screw H M8x110 Z	Vis H M8x110 Z			
108	519 65 34-55	Screw H M10x35 Z	Vis H M10x35 Z			
109	519 65 30-46	Screw H M10x55 Z	Vis H M10x55 Z			
110	519 65 34-54	Screw H M12x60 Z	Vis H M12x60 Z			
111	519 65 31-31	Screw H M12x80 Z	Vis H M12x80 Z			
112	531 00 82-19	Screw H M12x110 Z	Vis H M12x110 Z			
113	531 00 82-20	Screw H M14x90 Z	Vis H M14x90 Z			
114	519 65 30-10	Screw CHc M6x50	Vis CHc M6x50			
115	531 00 82-53	Screw H M6x20 Z, notched shoulder	Vis H M6x20 Z embase crantée			
116	531 00 94-12	Screw	Vis			
121	732 26 16-01	Blocking nut M6 Z	Écrou frein M6 Z			
122	519 00 62-00	Blocking nut M8 Z	Écrou frein M8 Z			
123	519 65 34-58	Blocking nut M10 Z	Écrou frein M10 Z			
124	725 25 50-51	Blocking nut M12 Z	Écrou frein M12 Z			
125	519 65 34-56	Nut H M10 Z	Écrou H M10 Z			
126	519 65 34-32	Nut H M6 Z, notched shoulder	Écrou H M6 Z embase crantée			
127	519 65 34-30	Nut H M8 Z, notched shoulder	Écrou H M8 Z embase crantée			
128	531 00 82-21	Nut H M12 Z, notched shoulder	Écrou H M12 Z embase crantée			
141	519 65 34-50	Washer 8 Z	Rondelle 8 Z			
143	519 65 34-53	Washer 12x27x2,5 Z	Rondelle 12x27x2,5 Z			
145	519 65 34-62	Starlock washer 10	Rondelle starlock 10			
148	531 00 85-39	Washer 3,2x10x1Z	Rondelle 3,2x10x1Z			
160	531 00 94-10	Clip pin, 10mm diameter	Goupille clips Ø10			
161	531 00 94-11	Clip pin, 8mm diameter	Goupille clips Ø8			
162	519 65 30-21	Key	Clavette			
163	519 65 34-25	Spire nuts 4,2	Clips 4,2			
164	519 65 34-66	Circlips	Circlips			
165	519 65 34-26	Cover bolt 4,2	Vis Tôle 4,2			
180	531 00 85-40	Safety label	Étiq. "sécurité"			
183	519 64 66-80	Label: Accelerator lever	Étiquette de gaz			
184	519 65 30-85	Label: Clutch lever	Étiquette embrayage mécanique			
185	519 65 30-84	Label: Forward and reverse gears	Étiq. "inversion de vitesse "			
186	531 00 94-15	Label: husqvarna T85BS	Étiq.: husqvarna T85BS		1	
	531 00 94-16	Label: husqvarna T85RS	Étiq.: husqvarna T85RS			1
	531 00 94-17	Label: husqvarna T85HX	Étiq.: husqvarna T85HX	1		
187	519 65 31-03	Label: engine cut-off	Étiq.: arrêt moteur	1		