

# T900 RH

**Spare parts**

**Ersatzteile**

**Pièces détachées**

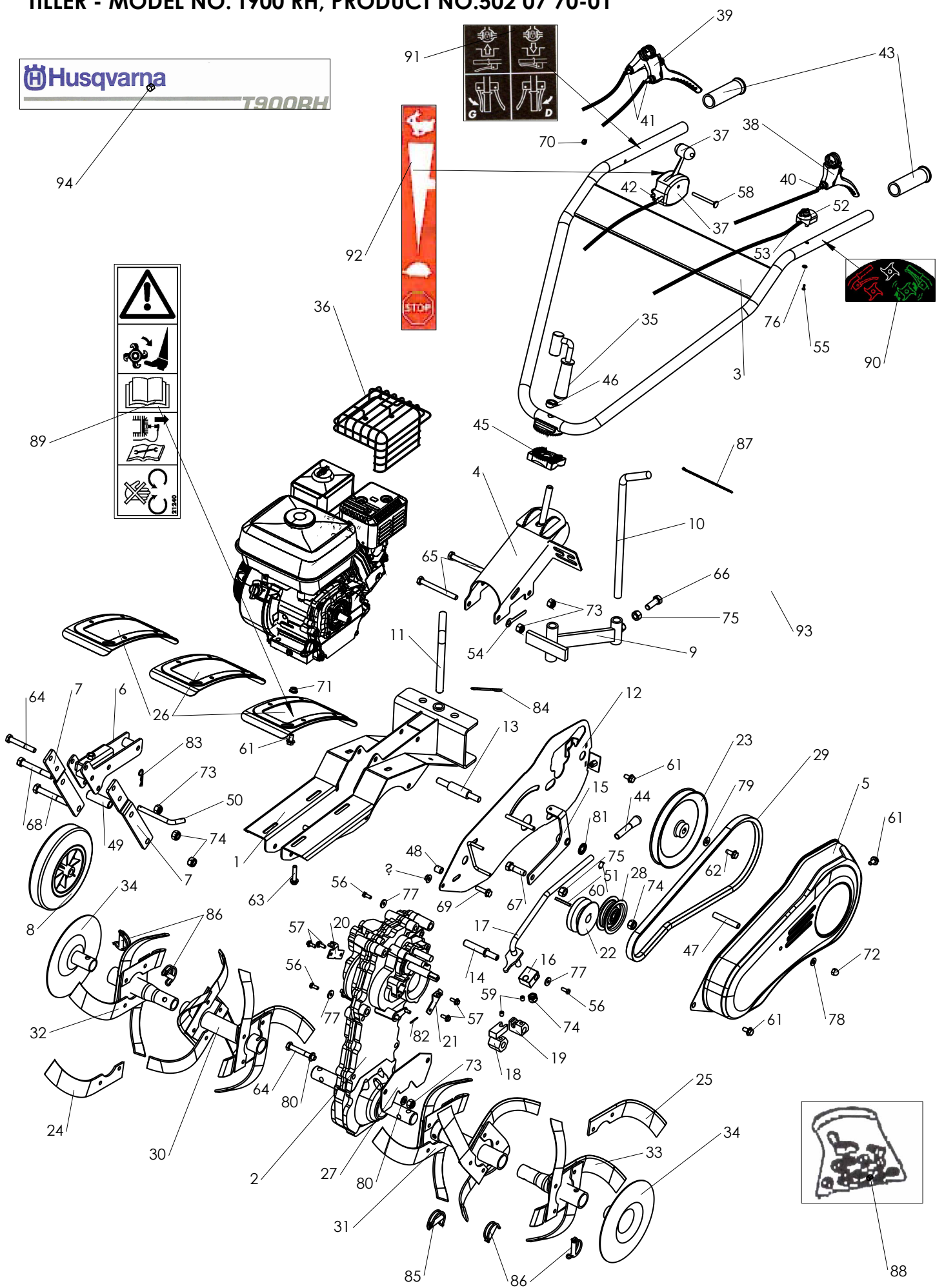
**Reserve onderdelen**

**Repuestos**

**Reservdelar**

# REPAIR PARTS

TILLER - MODEL NO. T900 RH, PRODUCT NO.502 07 70-01



## REPAIR PARTS

### TILLER - MODEL NO. T900 RH, PRODUCT NO.502 07 70-01

KEY NO.	PART NO.	DESCRIPTION	DESIGNATION	QTY QTE
1	501 98 78-01	Grey (627) Quatro Senior's chassis	Chassis Quatro Senior gris (627)	1
2	501 98 79-01	Quatro Senior's transmission	Transmission Quatro Senior	1
3	501 98 80-01	Grey (G627) handelbar (QS)	Guidon gris (G627)(QS)	1
4	501 98 81-01	Orange (2004) handelbar bracket (QS)	Potence guidon Orange (2004) (QS)	1
5	501 98 82-01	Orange (2004) wheel sheet cover (QS)	Capot tôle orange (2004)(QS)	1
6	501 98 83-01	Black front wheel bracket (QS)	Support roue de transport noir (QS)	1
7	501 98 84-01	Black wheel bracket sheet steel (QS)	Tôle support de roue noir (QS)	2
8	519 65 32-59	Front wheel Ø200	Roue avant Ø200	1
9	544 30 92-01	Black adjustable spur arm	Corps béquille ajustable noir	1
10	544 30 93-01	Black spur	Béquille noir (QJ)	1
11	544 30 95-01	Pin	Broche éperon (QJ)	1
12	501 98 85-01	Black inner sheet steel (QS)	Tôle interieur noir (QS)	1
13	501 98 86-01	Clutch lever axel (QS)	Axe support levier d'emb (QS)	1
14	501 98 87-01	Control lever axel (QS)	Axe support levier de vitesse (QS)	1
15	501 98 88-01	Clutch lever (QS)	Levier d'emb (QS)	1
16	544 31 02-01	Control lever support (QS)	Support levier de vitesse (QS)	1
17	501 98 89-01	Black Gear lever (QS)	Levier de vitesse noir (QS)	1
18	501 98 90-01	Front fork (control lever QS)	Fourchette avant (levier de vitesse QS)	1
19	501 98 91-01	Back fork (Control lever QS)	Fourchette arrière (levier de vitesse QS)	1
20	501 98 92-01	Attach cable right decoupling fork joint	Attache câble décrabo. droit	1
21	501 98 93-01	Attach cable left decoupling fork joint	Attache câble décrabo. gauche	1
22	501 98 94-01	motor pulley	Poulie moteur Quatro Ø80x17 ales 19.06	1
23	501 98 95-01	Transmission pulley (QS)	Poulie Transmission Ø185 QS	1
24	531 00 85-48	Right spiral blade	Couteau Hel 40x4 Droit	1
25	531 00 85-47	Left spiral blade	Couteau Hel 40x4 gauche	1
26	544 30 77-01	Grey (627) tine cover	Tole de protection gris (627)	6
27	501 98 96-01	Grey transmission tine cover	Tôle de protection transmission	2
28	501 98 97-01	Clutch runner	Galet d'emb Ø64x21	1
29	501 98 98-01	Belt	Courroie B42 Hi-Power	1
30	501 98 99-01	Original right-hand spiral tine Ø30	Fraise Dep Mono Ø30 Hel Droite	1
31	501 99 00-01	Original left-hand spiral tine Ø30	Fraise Dep Mono Ø30 Hel Gauche	1
32	501 99 01-01	Additional right-hand spiral tine Ø30	Fraise add Ø30 Hel 40x4 droite	1
33	501 99 02-01	Additional left-hand spiral tine Ø30	Fraise add QD Ø30 Hel 40x4 gauche	1
34	501 99 03-01	Disk Ø200 x Ø30	Disque Ø200 x Ø30	2
35	544 31 15-01	Handlebar tightening lever	Poignée de serrage	1
36	501 99 04-01	Exhaust grill GX200	Grille echappement GX 200	1
37	501 99 05-01	Throttle lever	Manette de gaz QS	1
38	544 31 13-01	lever LAB Ø25 stroke 25	Levier LAB Ø25 course 25	1
39	501 99 06-01	Double lever	Levier double LAD Ø25 course 25	1
40	501 99 07-01	Clutch cable	Câble d'embrayage	1
41	501 99 08-01	Decoupling cable	Câble décrabotage	2
42	501 99 09-01	Throttle cable	Cable de gaz	1
43	544 31 14-01	Hand side grip	Poignée Ø25x120	2
44	544 31 03-01	Knob Ø10 Lg.80	Poignée type B Ø10 Lg 80	1
45	519 65 34-15	Filler piece	Pièce intermédiaire	1
46	519 65 34-14	Spacer	Entretoise poignée de serrage	1
47	501 99 10-01	Spacer 8x12x68	Entretoise 8x12x68	1
48	544 20 64-01	Spacer 9x14x15.3	Entretoise 9x14x15.3	2
49	501 99 11-01	Spacer 13x20x61	Entretoise 13x20x61	1
50	544 30 98-01	Pin transport wheel	Broche roue de transport Quatro J	1
51	519 65 30-21	Key 4.76x4.76x40	Clavette 4.76x4.76x40	1
52	531 00 85-58	Switch engine cut-off Honda (GX)	Switch arrêt moteur Honda (GX)	1
53	501 99 12-01	Extension switch engine cut-off	Prolongateur arrêt moteur	1

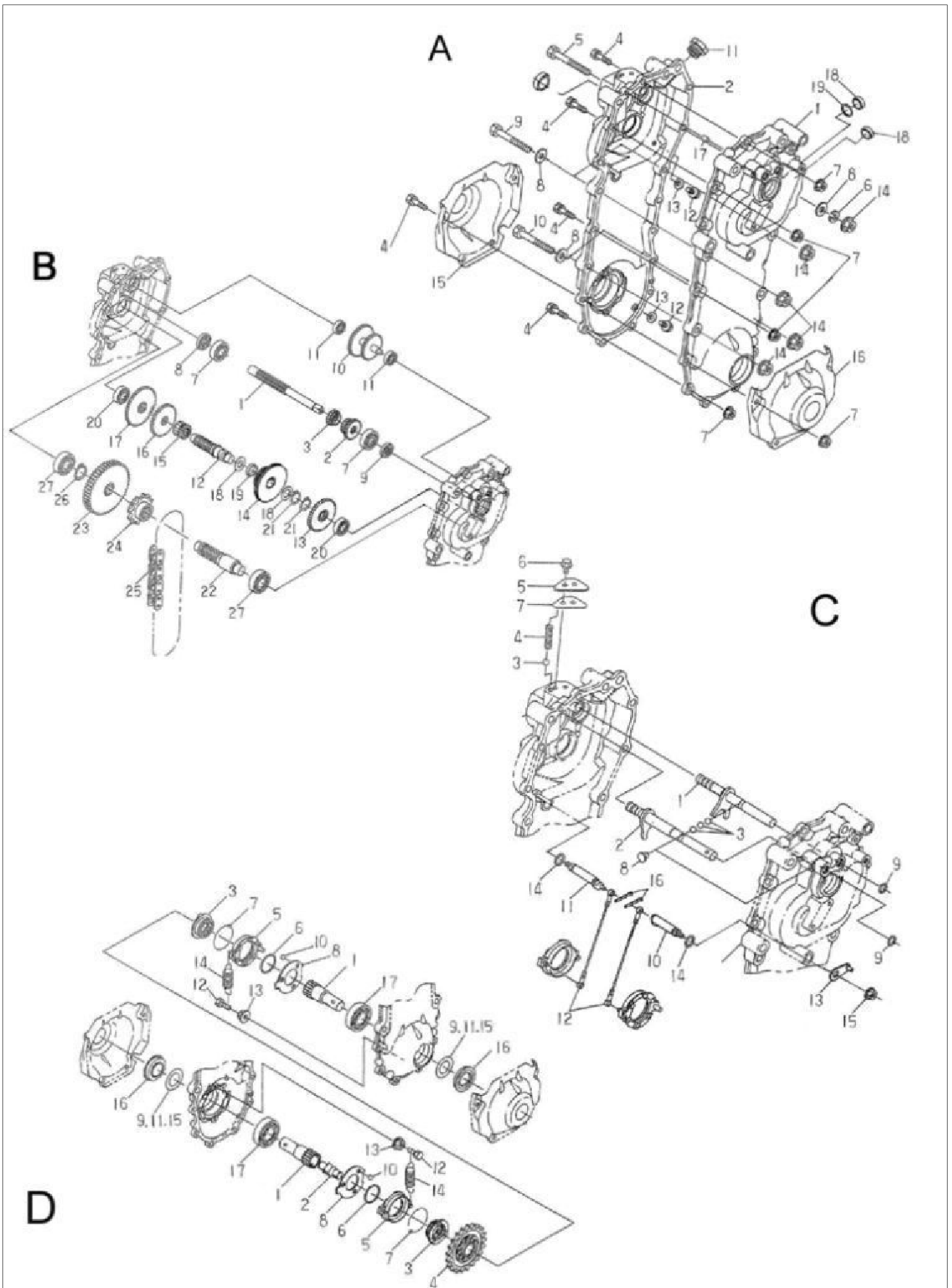
# REPAIR PARTS

## TILLER - MODEL NO. T900 RH, PRODUCT NO.502 07 70-01

KEY NO.	PART NO.	DESCRIPTION	DESIGNATION	QTY QTE
54	501 99 13-01	cable support Ø 10x60	Accroche câble Ø 10x60	1
55	501 99 14-01	Screw TCB 3x10 Z	Vis TCB 3x10 Z DIN 7985	1
56	501 99 15-01	Screw HM6x16 N	Vis HM6x16 N	3
57	519 65 34-35	Screw HM 6x16 z notched shoulder	Vis HM 6x16 z emb cr	4
58	501 99 16-01	Screw TBCC M6x65 z	Vis TBCC M6x65 z	1
59	501 99 17-01	Screw ST HC M8x10z (cup point)	Vis ST HC M8x10z Bout cuv	2
60	728 69 23-00	Screw ST HC M8x16	Vis ST HC M8x16	1
61	531 00 82-02	Screw H M8x16 z notched shoulder	Vis HM 8x16 z emb cr	15
62	519 65 34-33	Screw H M8x20 z notched shoulder	Vis HM 8x20 z emb cr	1
63	544 20 74-01	Screw HM8x40z notched shoulder	Vis HM 8x40 z emb cr	4
64	544 31 36-01	Screw H M10x70 z	Vis H M10x70 z	7
65	501 99 18-01	Screw H M10x100 z	Vis H M10x100 z	2
66	519 65 31-30	Screw HM 12x35 z	Vis HM12x35 z	1
67	501 99 19-01	Screw HM 12x40z	Vis HM12x40z	1
68	501 99 20-01	Screw HM12x85z	Vis HM12x85z	2
69	501 99 21-01	4174,76	Vis 5/16 TH24 UNF3/4z Lg.32 emb cr	2
70	732 26 16-01	Blocking nut M 6 Z	Ecrou frein M 6 Z	1
71	519 65 34-30	Nut H M8 z notched shoulder	Ecrou H M8 z emb cr	17
72	501 99 22-01	Cap nut M8z	Ecrou borgne M8	1
73	519 65 34-58	Blocking nut M 10 Z	Ecrou frein M 10 Z	9
74	752 25 50-51	Blocking nut M 12 Z	Ecrou frein M 12 Z	4
75	501 99 23-01	Nut HM 12z	Ecrou HM 12z	2
76	531 00 85-39	Washer M 3.2x10x1 Z	Rondelle M 3.2x10x1 Z	1
77	531 00 83-90	Washer 6.3x19x2.5 Z	Rondelle 6.3x19x2.5 Z	3
78	544 20 81-01	Washer M8x18x1.5 Z	Rondelle M8x18x1.5 Z	1
79	519 65 30-97	Washer 9x20x3 Z	Rondelle 9x20x3 Z	1
80	501 99 24-01	Washer M 10x20x2z	Rondelle M 10x20x2z	12
81	501 99 25-01	Starlock washer Ø12	Rondelle starlock Ø12	1
82	501 99 26-01	Cotter pin Ø2 Lg.20mm	Goupille fendue Ø2 Lg.20mm	2
83	519 65 12-20	Clip pin beta 2 Z	Goupille Béta 2 Z	1
84	519 65 31-66	Clip pin beta 3 Z	Goupille Béta 3 Z	1
85	501 99 27-01	Clip pin Ø10x45	Goupille clip Ø10x45	2
86	501 99 28-01	Clip pin Ø10x38	Goupille clip Ø10x38	4
87	519 65 32-32	Collar	Collier polya	4
88	519 00 64-17	Bag of screws (quatro)	Pochette visserie (quatro)	1
89	531 00 85-40	Safety label	Etiq. "sécurité"	1
90	519 65 30-85	Label "clutch lever"	Etiq. "Embrayage"	1
91	501 99 29-01	Label "clutch claw decoupling"	Etiquette "Décrab. droit/gauche"	1
92	501 99 30-01	Label throttle control (plough) with stop	Etiquette gaz (labour) avec stop	1
93	501 99 31-01	Speed grid label	Autocollant grille de vitesse QS	1
94	501 98 32-01	Label "Husqvarna T 900RH"	ETIQ "Husqvarna T 900RH"	1

# REPAIR PARTS

TILLER - MODEL NO. T900 RH, PRODUCT NO.502 07 70-01



# REPAIR PARTS

## TILLER - MODEL NO. T900 RH, PRODUCT NO.502 07 70-01

KEY NO.	PART NO.	DESCRIPTION	Désignation	QTY
1A	501 99 33-01	CASE L	CARTER G	1
2A	501 99 34-01	CASE R	CARTER D	1
4A	501 99 35-01	SCREW H M8 LG. 30mm	VIS H M8 Lg. 30mm	11
5A	519 65 30-39	SCREW H M10 LG. 80mm	VIS H M10 Lg. 80mm	1
6A	519 65 31-60	WASHER,spring 10Z	RONDELLE GROWER 10 Z	1
7A	519 65 34-30	NUT,flange H M8 z	ECROU H M8 z emb cr	11
8A	531 00 83-89	WASHER M 10X22X2 Z	RONDELLE PLATE M 10X22X2 Z	5
9A	501 99 36-01	SCREW H M10 LG. 60mm	VIS H M10 Lg. 60mm	2
10A	501 99 37-01	SCREW H M10 LG. 65mm	VIS H M10 Lg. 65mm	2
11A	501 99 38-01	PLUG,oil	BOUCHON D'HUILE	1
12A	501 99 39-01	PLUG	BOUCHON DE VIDANGE	2
13A	501 99 40-01	WASHER,seal	RONDELLE D'ETANCHEITE	2
14A	501 99 41-01	NUT,flange H M10 z	ECROU H M10 z emb cr	5
15A	501 99 42-01	COVER R	TOLE DE PROTECTION D	1
16A	501 99 43-01	COVER L	TOLE DE PROTECTION G	1
17A	501 99 44-01	PIN Ø8x12	GOUPILLE Ø8x12	2
18A	501 99 45-01	CAP,seal	BOUCHON D'ETANCHEITE	2
19A	501 99 46-01	C-RING Ø14	CIRCLIPS Ø14	1
1B	501 99 47-01	SHAFT 1	ARBRE 1	1
2B	501 99 48-01	GEAR 23	ENGRENAGE (23 DENTS)	1
3B	501 99 49-01	GEAR 16	ENGRENAGE (16 DENTS)	1
7B	501 99 50-01	BEARING,ball TMB 6303	ROULEMENT TMB 6303	2
8B	501 99 51-01	CAP,seal	BOUCHON D'ETANCHEITE	1
9B	501 99 52-01	SEAL,oil	JOINT D'ETANCHEITE	1
10B	501 99 53-01	SHAFT 2	ARBRE 2	1
11B	501 99 54-01	BEARING,ball TMB 6201	ROULEMENT TMB 6201	2
12B	501 99 55-01	SHAFT 3	ARBRE 3	1
13B	501 99 56-01	GEAR 41	ENGRENAGE (41 DENTS)	1
14B	501 99 57-01	GEAR 27-41	ENGRENAGE DOUBLE (27 et 41 DENTS)	1
15B	501 99 58-01	GEAR 16	ENGRENAGE (16 DENTS)	1
16B	501 99 59-01	GEAR 43	ENGRENAGE (43DENTS)	1
17B	501 99 60-01	GEAR 48	ENGRENAGE (48 DENTS)	1
18B	501 99 61-01	LINER A	RONDELLE DE CALAGE	2
19B	501 99 62-01	BUSHING	BAGUE	1
20B	501 99 63-01	BEARING,ball TMB 6203	ROULEMENT TMB 6203	2
21B	501 99 64-01	C-RING Ø22	CIRCLIPS Ø22	2
22B	501 99 65-01	SHAFT 4	ARBRE 4	1
23B	501 99 66-01	GEAR 47	ENGRENAGE (47 DENTS)	1
24B	501 99 67-01	SPROCKET 10	PIGNON A CHAINE (10 DENTS)	1
25B	501 99 68-01	CHAIN	CHAINE	1
26B	501 99 69-01	C-RING Ø25	CIRCLIPSØ25	1
27B	501 99 70-01	BEARING,ball	ROULEMENT	2
1C	501 99 71-01	1-3 SHIFT SHAFT	ARBRE INT. G	1
2C	501 99 72-01	R-2 SHIFT SHAFT	ARBRE INT. D	1
3C	501 99 73-01	BALL (1/4")	BILLE (1/4")	5
4C	501 99 74-01	SPRING	RESSORT	2
5C	501 99 75-01	PLATE	PLAT DE FIXATION	1
6C	501 99 76-01	SCREW H M6 LG. 12mm, flange	VIS H M6 LG.12 z emb cr	2
7C	501 99 77-01	PACKING	GARNITURE D'ETANCHEITE	1
8C	501 99 78-01	PLUG	BOUCHON	1
9C	501 99 79-01	O-RING Ø14	JOINT TORIQUE Ø14	2
10C	501 99 80-01	LINK SHAFT L	ARBRE G	1
11C	501 99 81-01	LINK SHAFT R	ARBRE D	1
12C	501 99 82-01	WIRE	CABLE	2
13C	501 99 83-01	SHIFT LEVER	LEVIER DECRABOTTAGE	2
14C	501 99 84-01	O-RING Ø10	JOINT TORIQUE Ø10	2
15C	519 65 34-30	NUT,flange H M8 z	ECROU H M8 z emb cr	2
16C	501 99 85-01	PIN,split Ø1,6x12	GOUPILLE Ø1,6x12	2
1D	502 07 55-01	FINAL SHAFT	ARBRE SORTIE	2
2D	502 07 56-01	PIN	PION DE CENTRAGE	1
3D	502 07 57-01	CLUTCH	CRABOT	2
4D	502 07 58-01	SPROCKET 21	PIGNON A CHAINE (21 DENTS)	1
5D	502 07 59-01	HOLDER	BAGUE MAINTIENT CRABOT	2
6D	502 07 60-01	RING,SNAP	SEGMENT D'ARRET	2
7D	501 99 73-01	BALL (1/4")	BILLE (1/4")	50
8D	502 07 61-01	RETAINER	BAGUE DE RETENUE	2
9D	502 07 62-01	LINER (t=0,2)	RONDELLE DE CALAGE (t=0,2)	AR*
10D	502 07 63-01	BALL (3/8")	BILLE (3/8")	6
11D	502 07 64-01	LINER (t=0,4)	RONDELLE DE CALAGE (t=0,4)	AR*
12D	502 07 65-01	SCREW H M6 LG. 30mm	VIS H M6 Lg. 30mm	4
13D	519 65 34-32	NUT,flange H M8 z	ECROU H M8 z emb cr	4
14D	502 07 66-01	SPRING	RESSORT	4
15D	502 07 67-01	LINER (t=0,15)	RONDELLE DE CALAGE (t=0,15)	AR*
16D	502 07 68-01	SEAL,oil	JOINT D'ETANCHEITE	2
17D	502 07 69-01	BEARING,ball 6206	ROULEMENT 6206	2

AR\* : arrange (en cas de nécessité)