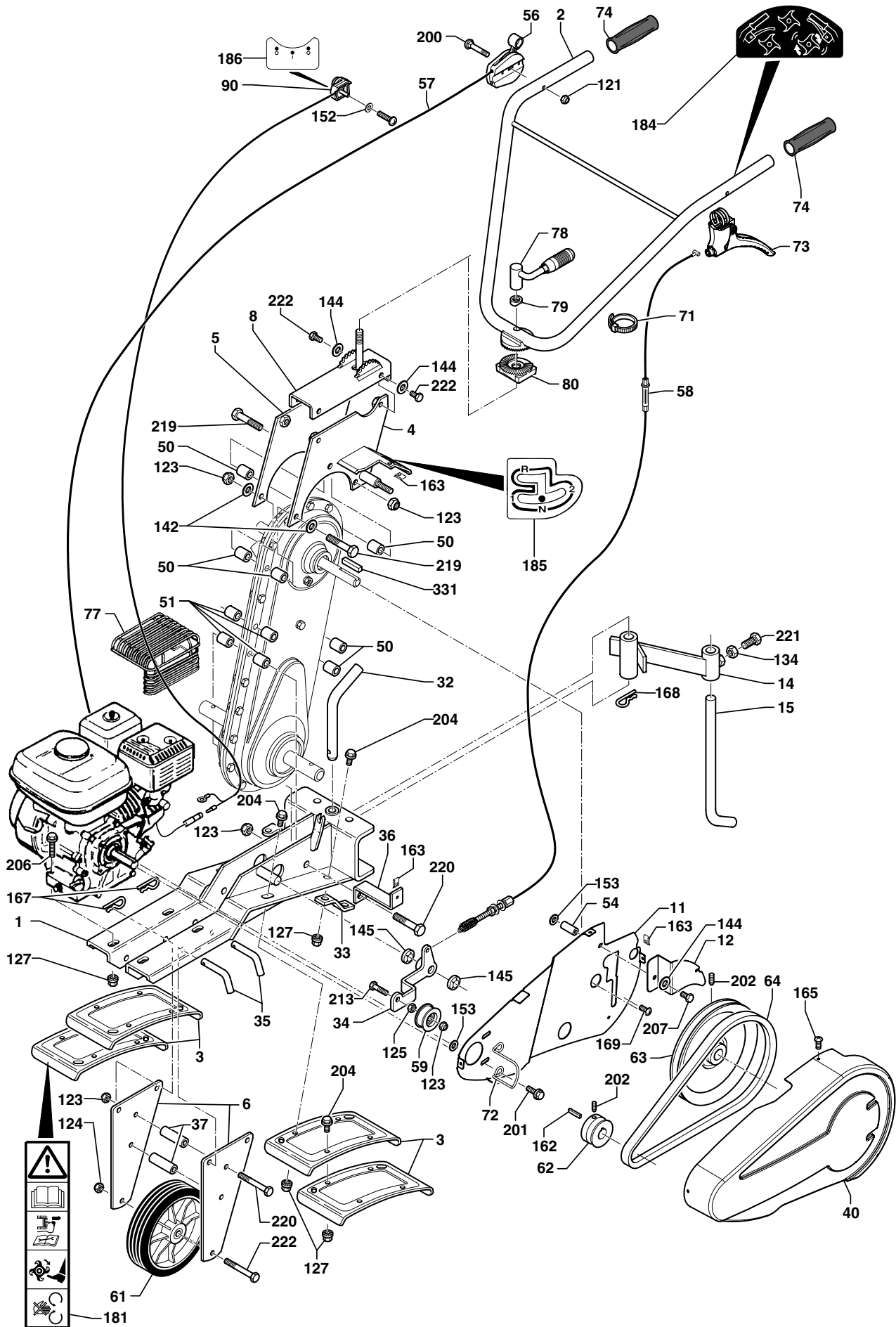


T860

Spare parts
Ersatzteile
Pièces détachées
Reserve onderdelen
Repuestos
Reservdelar

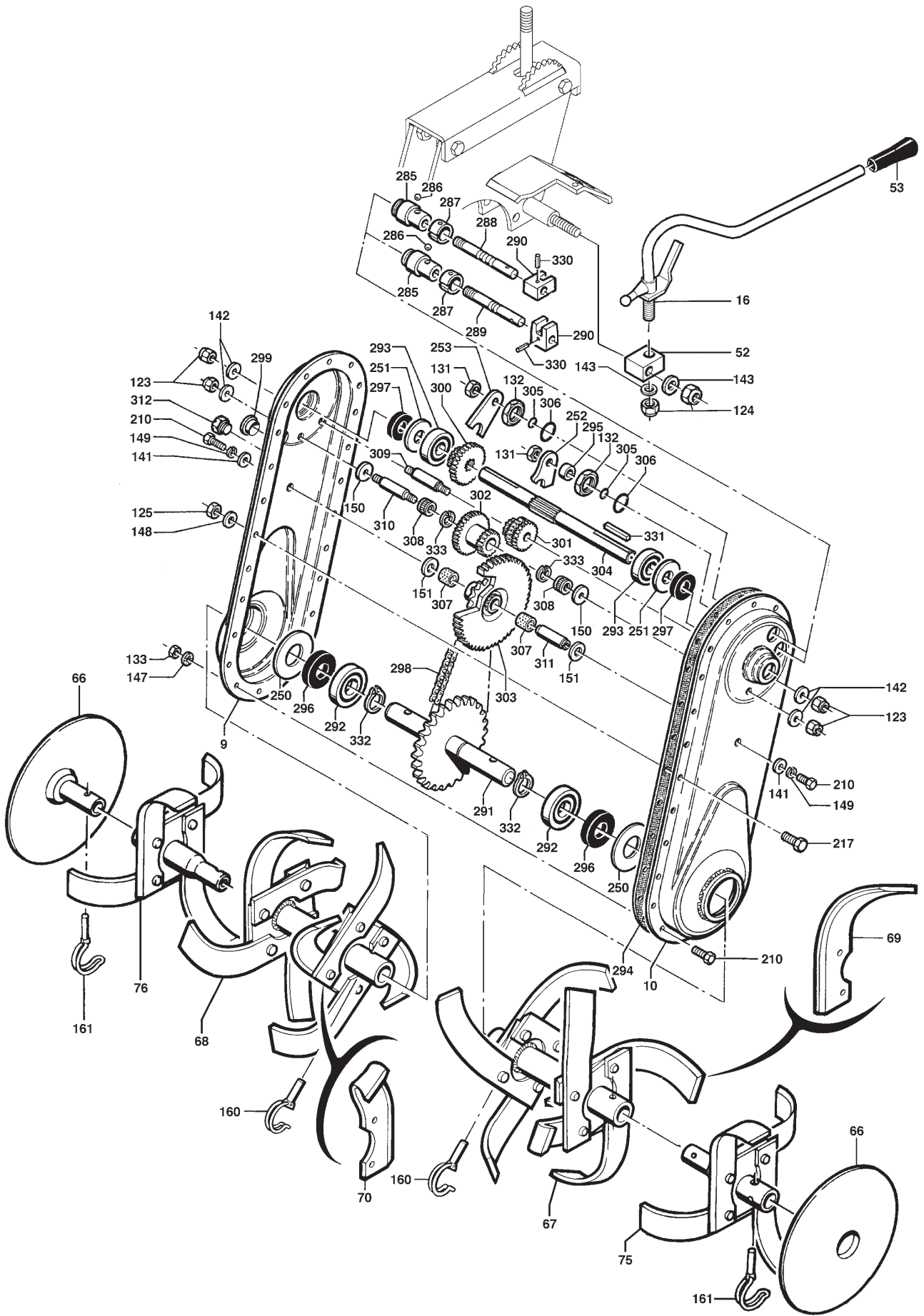
REPAIR PARTS

TILLER - MODEL NO. T 860 RS - T 860 HX, PRODUCT NO. 544 31 42-01



REPAIR PARTS

TILLER - MODEL NO. T 860 RS - T 860 HX, PRODUCT NO. 544 31 42-01



REPAIR PARTS

TILLER - MODEL NO. T 860 RS - T 860 HX, PRODUCT NO. 544 31 42-01

KEY NO.	PART NO.	DESCRIPTION	DÉSIGNATION	QTY / QTÉ		
1	544 30 73-01	3502010603	Châssis (Gris 627)	Chassis (Grey 627)	1	
2	544 30 75-01	3502010617	Guidon (Gris 627)	Handlebars (Grey 627)	1	
3	544 30 77-01	3502010601	Aile protection (Gris 627)	Protection iron sheet (Grey 627)	6	
4	544 30 78-01	3502030610	Potence guidon gauche (Gris 627)	Left handlebar support (Grey 627)	1	
5	544 30 79-01	3502010607	Potence guidon droit (Gris 627)	Right handlebar support (Grey 627)	1	
6	544 30 80-01	3502010318	Supp. Roue transport (Noir)	Front wheel bracket (Black)	2	
8	544 30 83-01	3502010609	Chapeau potence guidon (gris 627)	Hat handlebar support (Grey 627)	1	
9	519 65 32-48	14003002	3502010305	Joue carter droite (Noir)	Transmission housing, RHS (Black)	1
10	519 65 32-49	14003012	3502010306	Joue carter gauche (Noir)	Transmission housing, LHs (Black)	1
11	544 30 90-01	3502030321	Tôle intérieure capot (GX)	Inner stile belt cover (GX)	1	
	544 30 91-01	3502030322	Tôle intérieure capot (GC/BS/EX)	Inner stile belt cover (GC/BS/EX)	1	
12	544 31 16-01	3502030316	Tôle passage levier	Inner stile for speed lever	1	
14	544 30 92-01	3502010319	Corps de béquille (Noir)	Prop (Black)	1	
15	544 30 93-01	3502010320	Tige de béquille (Noir)	Prop pin (Black)	1	
16	544 30 94-01	3502010307	Levier de vitesse (Noir)	Lever (Black)	1	
32	544 30 95-01	3502010205	Broche de béquille	Pin	1	
33	543 30 96-01	57301160	3502010105	Chape support aile	Fork joint pin	2
34	544 30 97-01	15102140	3502010107	Levier embrayage	Clutch lever	1
35	544 30 98-01	3502010203	Broche de roue de transport	Pin	2	
36	544 30 99-01	0304000135	Patte fixa. Tôle int. Capot	Inner housing panel fixing lug	1	
37	544 31 00-01	0302020051	Entretoise roue de transport	Spacer	2	
40	544 31 01-01	0340020020	Capot courroie GC/EX/BS (Orange)	Belt cover GC/EX/BS (Orange)	1	
	544 31 17-01	0340020022	Capot courroie GX (Orange)	Belt cover GX (Orange)	1	
50	519 65 33-08	16016	0302020022	Entretoise lg 23	Spacer lg23	8
	519 65 33-09	16017	0302020030	Entretoise lg 23,7	Spacer lg 23,7	4
52	544 31 02-01	18007	0302010052	Support levier vitesse	Lever support	1
53	544 31 03-01	12130	0341000040	Poignée	Handle	1
54	544 31 04-01	0302020069	Entretoise	Spacer	1	
56	544 31 07-01	0307020011	Manette gaz (GX160)	Accelerator lever (GX 160)	1	
	544 31 06-01	0307020013	Manette gaz (EX17)	Accelerator lever (EX17)	1	
57	544 31 05-01	0308040031	Câble gaz (GX 160-EX17)	Throttle cable (GX160 - EX17)	1	
58	544 31 08-01	0308020037	Câble embrayage	Clutch cable	1	
59	519 65 34-57	12162	0341000003	Galet d'embrayage	Runner	1
61	519 65 32-59	14090	0309000013	Roue avant	Front wheel	1
62	519 65 32-90	15170	0306060007	Poulie moteur arbre Ø 19,05	Motor pulley (Shaft Ø 19,05)	1
63	519 65 32-92	15219a	0306060001	Poulie transmission	Transmission pulley	1
64	519 65 32-42	13493a	0306030001	Courroie	Belt	1
66	519 65 33-62	55102	0320010001	Disque	Disk	2
67	544 31 09-01	55122	0320010020	Etoile départ gauche hélic.	Original left-hand spiral blade assembly	1
68	544 31 10-01	55121	0320010019	Etoile départ droit hélic.	Original right-hand spiral blade assembly	1
69	531 00 85-47	81918	0001000030	Couteau gauche labour hélic.	Left ploughing knives	1
70	531 00 85-48	81917	0001000029	Couteau droit labour hélic.	Right ploughing knives	1
71	519 65 32-32	0301060003	Collier	Collar	2	
72	544 31 12-01	14987	0305030008	Guide courroie	Drive belt guide	1
73	544 31 13-01	0307010020	Levier embrayage	Clutch lever	1	
74	544 31 14-01	0341000037	Poignée PVC	Grip	2	
75	531 00 85-22	55124a	0320010008	Etoile addit. Gauche hélic.	Additional left-hand spiral blade assembly	1
76	531 00 85-23	55123a	0320010007	Etoile addit. Droite hélic.	Additional right-hand spiral blade assembly	1
77	531 00 94-18	14814	0330012003	Grille echappement (GX160)	Exhaust grill (GX160)	1
78	544 31 15-01	0300801401	Poignée de serrage	Handlebar tightening lever	1	
79	519 65 34-14	0302020037	Entretoise	Spacer	1	
80	544 31 18-01	0303000007	Pièce intermédiaire	Filler piece	1	
90	531 00 85-58	13210	0330012006	Switch arrêt moteur	Switch engine cut-off	1
121	732 26 16-01	11482	0300210602	Ecrou frein M6Z	Blocking nut M6Z	1
123	519 65 34-58	11485	0300211001	Ecrou frein M10Z	Blocking nut M10Z	1
124	725 25 50-51	11486	0300211201	Ecrou frein M12Z	Blocking nut M12Z	1
125	519 65 34-56	11429	0300201002	Ecrou H M10Z	Nut H M10Z	1
126	519 65 34-32	11518	0300260601	Ecrou H M6 Z embase crantée	Nut H M6 Z, notched shoulder	1
127	519 65 34-30	11519	0300260801	Ecrou H M8Z embase crantée	Nut H M8 Z, notched shoulder	1
131	519 65 31-52	11450	0300251201	Ecrou Hm M12x125 Z	Nut Hm M12x125 Z	1
132	519 65 31-53	11470	0003000042	Ecrou Hm M24x150 Z	Nut Hm M24x150 Z	1
134	519 65 34-52	11431	0300201202	Ecrou H M12 Z	Nut H M 12 Z	1
141	519 65 34-50	11616	0300400802	Rondelle 8 Z	Washer 8 Z	1
142	734 11 72-01	11621	0300401002	Rondelle 10 Z	Washer 10 Z	1
143	519 65 34-53	11635	0300401201	Rondelle 12x27x2,5	Washer 12x27x2,5 Z	1
144	544 31 49-01	0300430801	Rondelle contact 8	Contact washer 8	1	
145	735 58 71-00	11823	0300461601	Rondelle starlock 16	Starlock washer 16	1
147	519 00 09-95	11585	0003000061	Rondelle grower 8	Elastic washer 8	1

REPAIR PARTS

TILLER - MODEL NO. T 860 RS - T 860 HX, PRODUCT NO. 544 31 42-01

KEY NO.	PART NO.	DESCRIPTION	DÉSIGNATION	QTY / QTÉ	
148	519 65 31-60	11587 0300451001	Rondelle grower 10	Elastic washer 10	
150	519 65 31-71	11813 0001000396	Rondelle traitée 25x10,7x1,5	Washer 25x10,7x1,5	
151	519 65 31-72	11814 0300411401	Rondelle traitée 25x14,2x1,5	Washer 25x14,2x1,5	
152	531 00 85-39	11611 0300400301	Rondelle 3,2x10x1Z	Washer 3,2x10x1Z	
153	519 65 30-97	11619 0300410901	Rondelle 9x20x3	Washer 9x20x3	
160	544 31 19-01	55082 0301010004	Goupille clips Ø 10x33	Clip pin, Ø 10x33	
161	544 31 20-01	55083 0301010005	Goupille clips Ø 8x33	Clip pin, Ø 8x33	
162	519 65 30-21	12979 0301040001	Clavette arbre Ø 19,05	Key (Shaft Ø 19,05)	
163	519 65 34-25	11495 0301050001	Clips 4,2 ép. 4	Spire nuts 4,2	
165	519 65 34-26	11135 0300080405	Vis tôle 4,2	Cover bolt 4,2	
166	519 65 32-01	12973 0301040004	Clavette arbre trans. 5x5x40	Key 5x5x40	
167	519 65 12-20	11702 0301030001	Goupille Beta Ø 2	Spring retaining pin Ø 2	
168	519 65 31-66	11703 0301030002	Goupille Beta Ø 3	Spring retaining pin Ø 3	
181	531 00 85-40	21240 0503000036	Etiquette "Sécurité"	Safety label	
184	519 65 30-85	62831a 0503000029	Etiquette embrayage	Label: Clutch lever	
186	519 65 31-03	14678b 0503000015	Etiquette arrêt moteur	Label: Engine cut-off	
200	544 31 31-01	0300080604	Vis TRCC M6x60 Z	Screw TRCC M6x60 Z	
201	544 31 32-01	11113 0300060504	Vis 5/16 TH24 UNF lg 19 emb. crantée	Screw 5/16 TH24 UNF lg 19, notched shoulder	
202	519 65 30-20	11085 0300040801	Vis St Hc M8x16 N	Screw St Hc M8x16 N	
203	519 65 34-35	11250 0300010609	Vis H M6x16 Z embase crantée	Screw H M6x16 Z, notched shoulder	
204	531 00 82-02	11260 0300010815	Vis H M8x16 Z embase crantée	Screw H M8x16 Z, notched shoulder	
206	519 65 34-13	11265 0300010817	Vis H M8x40 Z embase crantée	Screw H M8x40 Z, notched shoulder	
207	531 00 85-09	10781 0300010811	Vis H M8x60	Screw H M8x60	
210	519 00 03-55	10766 0300010801	Vis H M8x16	Screw H M8x16	
211	544 31 33-01	0300010806	Vis H M8x20	Screw H M8x20	
213	519 65 34-55	10810 0300011003	Vis H M10x35 Z	Screw H M10x35 Z	
216	519 65 31-31	10863 0300011206	Vis H M12x80 Z	Screw H M12x80 Z	
217	544 31 35-01	10801	Vis H M10x16	Screw H M10x16	
219	544 31 36-01	10827 0300011011	Vis H M10x70 Z	Screw H M10x70 Z	
220	519 65 30-39	10822 0300011013	Vis H M10x80 Z	Screw H M10x80 Z	
221	544 31 38-01	0300011212	Vis H M12x30 Z	Screw H M12x30 Z	
250	519 65 33-88	R30x62x2 3502010109	Rondelle spéciale	Sealing washer	2
251	519 65 31-05	06303022 3504010031	Rondelle d'étanchéité	Sealing washer	2
252	519 65 31-10	10003048 3502010003	Fourchette 1-2	Fork 1-2	1
253	519 65 31-09	10003044 3502010004	Fourchette M. Ar.	Fork reverse	1
285	519 65 32-76	14952 0003000038	Palier fourchette	Fork bearing	2
286	519 65 31-94	12636 0306010001	Bille	Ball-bearing	2
287	519 65 32-14	13040 0001000418	Ressort à lame	Spring	2
288	519 65 32-81	15075 0003000048	Axe de fourchette 1-2	Fork pin 1-2	1
289	519 65 32-82	15076 0003000041	Axe de fourchette AR	Fork pin reverse	1
290	519 65 32-00	12935 0003000037	U de fourchette	Fork U	2
291	519 65 32-50	15041 0003040001	Arbre central	Central shaft	1
292	519 65 31-89	12507 0003000059	Roulement	Bearing	2
293	519 65 31-92	12534 0001000406	Roulement	Bearing	2
294	519 65 31-85	12354 0001000404	Joint de carter	Casing seal	1
295	519 65 31-48	11419	Entretoise Mar. Arriere	Spacer	1
296	519 65 31-82	12253 0341000012	Bague étanchéité 30x62x7	Sealing washer 30x62x7	2
297	519 65 31-81	12251 0341000008	Bague étanchéité 17x40x7	Sealing washer 17x40x7	2
298	519 65 32-38	13305 0306020006	Chaine	Chain	1
299	519 65 33-91	12793 0341000014	Bouchon de remplissage	Plug	1
300	519 65 33-01	15345 0001000455	Pignon 16x30	Pinion 16x30	1
301	519 65 32-99	15336 0001000014	Pignon 22x13	Pinion 22x13	1
302	519 65 33-00	15340 0001000015	Pignon 33x19	Pinion 33x19	1
303	544 31 39-01	15370	Pignon 8x77	Pinion 8x77	1
304	544 31 40-01	15011	Arbre primaire	Primary shaft	1
305	519 65 31-84	12316	Joint torique	O-ring	2
306	519 65 31-83	12315 0003000007	Joint torique	O-ring	2
307	519 65 31-96	12680 0001000410	Bague friction	Friction ring	2
308	519 65 31-95	12660 0306010002	Douille aiguille	Double needle	2
309	519 65 32-84	15106 0003040005	Axe 14x47,3x77,3	Axle 14x47,3x77,3	1
310	519 65 32-83	15103 0001000498	Axe 14x44,3x77,3	Axle 14x44,3x77,3	1
311	519 65 32-85	15112	Axe 14x47,3	Axle 14x47,3	1
312	519 65 31-97	12779 0302010046	Bouchon de niveau	Plug	1
330	544 31 41-01	11763 0001000393	Goupille 4x30	Pin 4x30	
331	519 65 32-01	12973 0301040004	Clavette 5x5x40	Key 5x5x40	
332	519 65 31-99	12870 0301070008	Circlips ext. 30	Circlips	
333	519 65 31-98	12840 0001000412	Circlips inversé 20	Circlips	