

# CTH210 XP

**Spare parts**

**Ersatzteile**

**Pièces détachées**

**Reserve onderdelen**

**Repuestos**

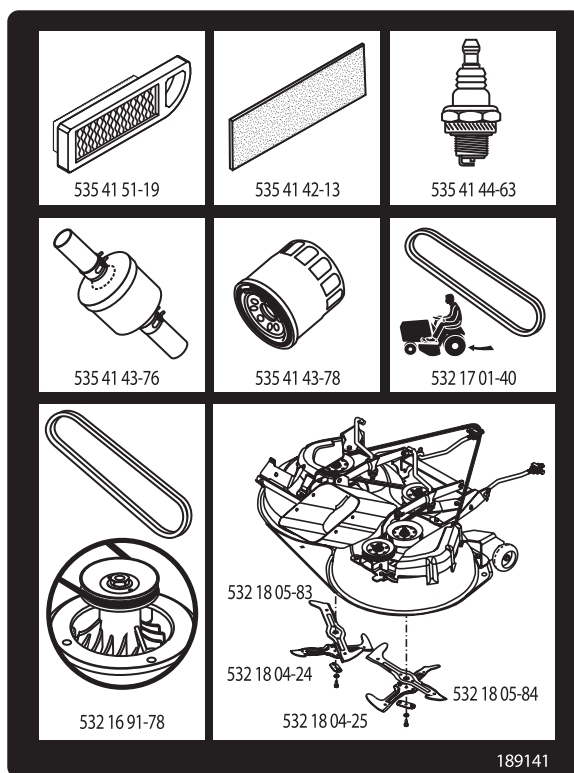
**Reservdelar**

# ILLUSTRATED PARTS LIST

**MFG. ID NO. 96061007800**

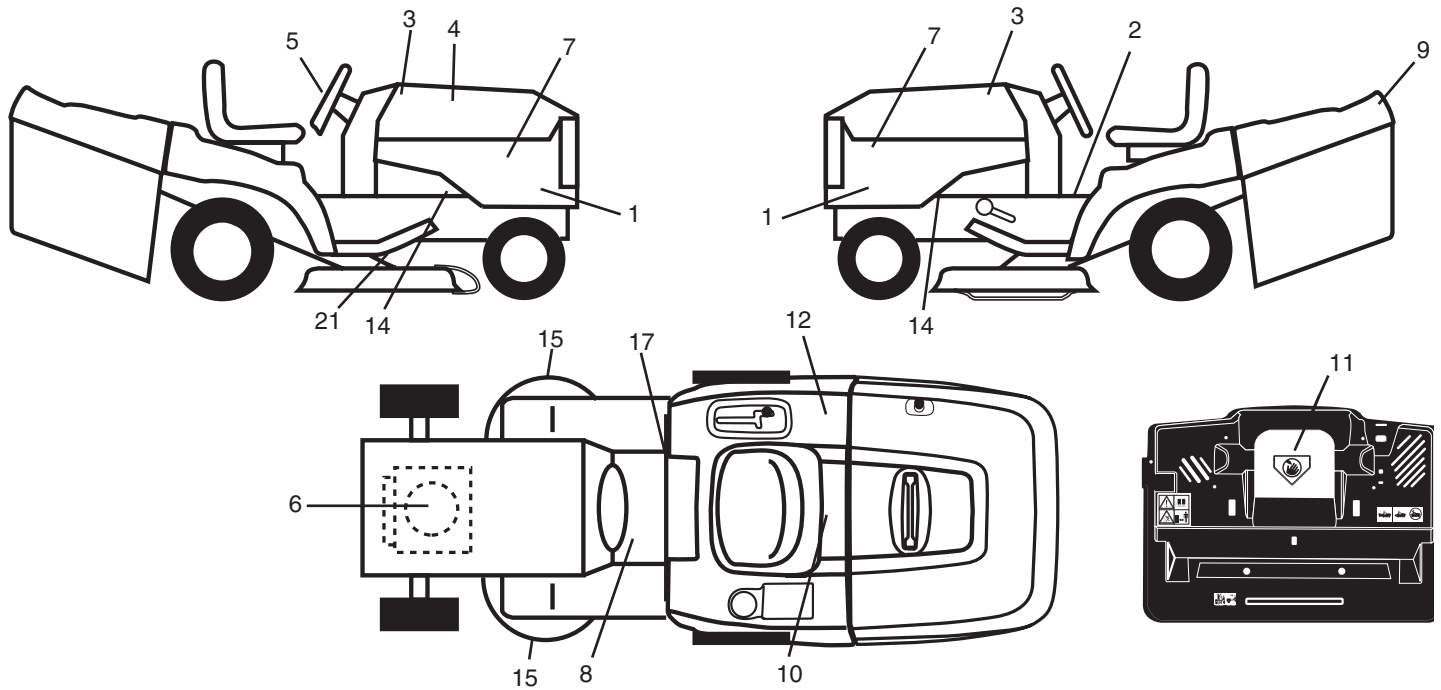
**CUSTOMER CATALOG NO. CTH210XP**

**PRODUCT NO. 960 61 00-78**



# REPAIR PARTS

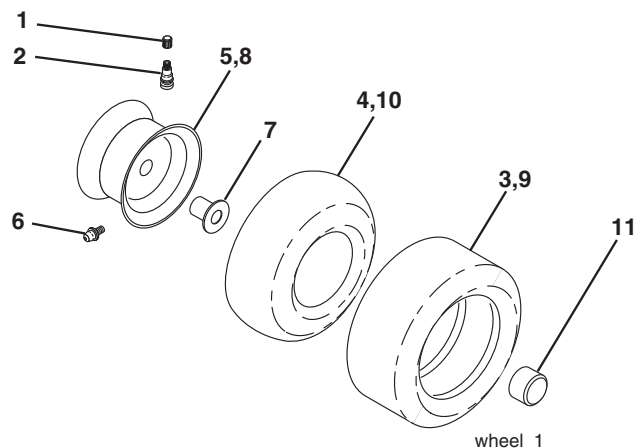
TRACTOR- -MODEL NO. CTH210 XP (96061007800) PRODUCT NO. 960 61 00-78  
DECALS



| KEY NO. | PART NO.     | DESCRIPTION                   |
|---------|--------------|-------------------------------|
| 1       | 532 19 11-48 | Decal Side Panel              |
| 2       | 532 40 03-89 | Decal Warning Symbols CE      |
| 3       | 532 18 89-22 | Decal Hood                    |
| 4       | 532 18 91-41 | Decal Replacement             |
| 5       | 532 18 89-25 | Decal Wheel Logo              |
| 6       | 532 19 68-41 | Decal Warning Engine Symbols  |
| 7       | 532 18 89-21 | Decal Hood Rh/LH              |
| 8       | 532 15 97-37 | Decal Brake/Clutch Symbol     |
| 9       | 532 18 89-33 | Decal Fender Logo             |
| 10      | 532 14 50-05 | Decal Bat Dan/Poi P/L Sym Wpn |
| 11      | 532 18 21-66 | Decal Mower Cut Finger Symbol |
| 12      | 532 18 04-32 | Decal Fender 100 DB/CE        |

| KEY NO. | PART NO.     | DESCRIPTION                |
|---------|--------------|----------------------------|
| 14      | 532 15 97-36 | Decal Chassis Hot Muffler  |
| 15      | 532 19 68-42 | Decal Warning Cut Finger   |
| 17      | 532 14 08-37 | Decal Saddle Brake Parking |
| 21      | 532 16 62-86 | Decal Deck Sch 92 CRD      |
| --      | 532 16 69-60 | Decal Bypass Fender        |
| --      | 532 13 83-11 | Decal Lift Handle          |
| --      | 532 18 10-91 | Pad Footrest LH            |
| --      | 532 18 10-90 | Pad Footrest RH            |
| --      | 532 18 04-35 | Decal Rear Plate           |
| --      | 532 40 09-75 | Manual Operator's (Euro)   |
| --      | 532 40 09-76 | Manual Operator's (Scan)   |
| --      | 532 40 14-15 | Manual Operator's (E-Bloc) |
| --      | 532 40 14-16 | Manual Operator's (Baltic) |

## WHEELS & TIRES

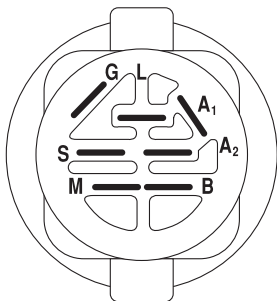
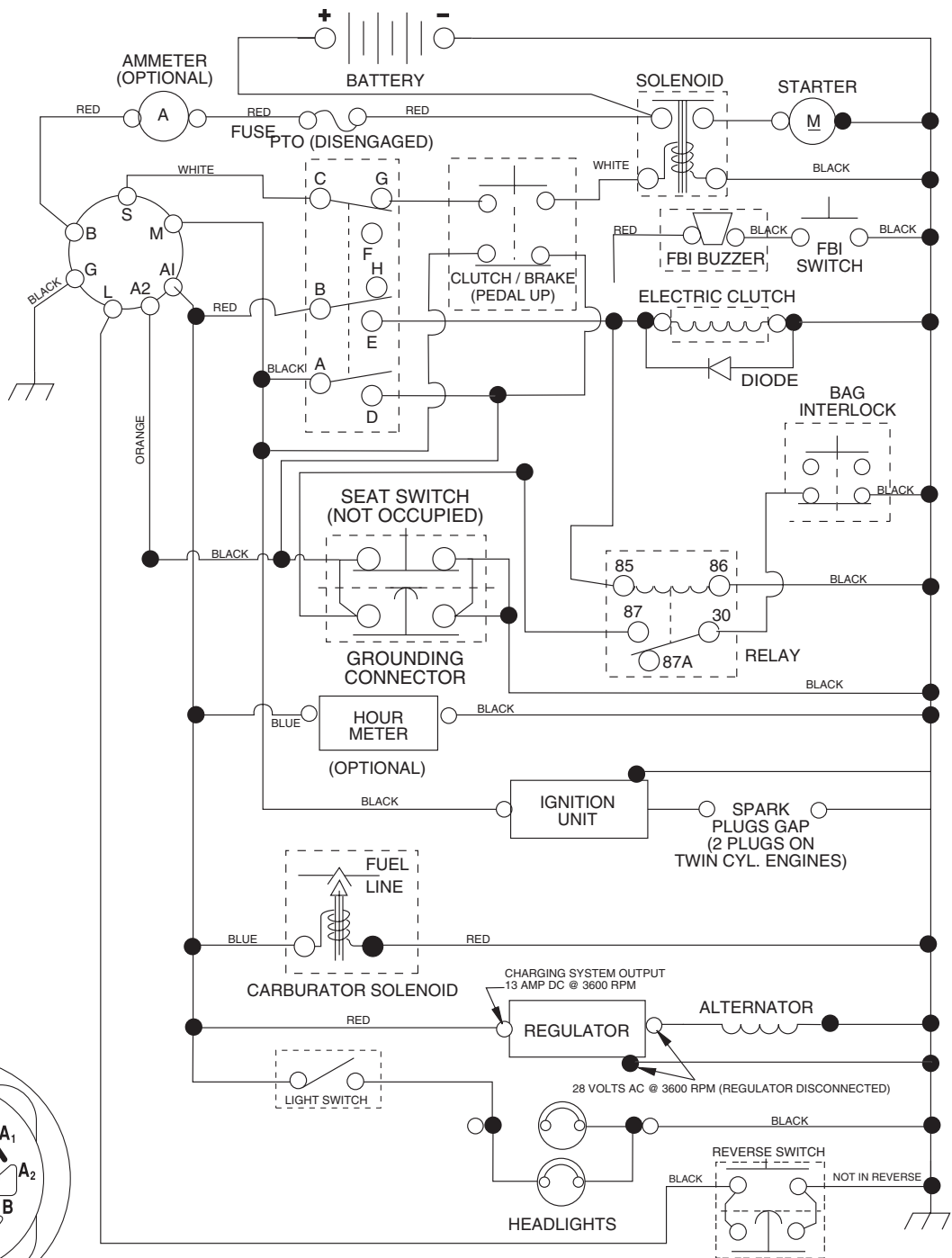


| KEY NO. | PART NO.     | DESCRIPTION                    |
|---------|--------------|--------------------------------|
| 1       | 532 05 91-92 | Cap Value Tire                 |
| 2       | 532 06 51-39 | Stem Value                     |
| 3       | 532 10 62-22 | Tire F Ts 15 x 6 0 - 6 Service |
| 4       | 532 05 99-04 | Tube Inner Front #35060        |
| 5       | 532 13 83-36 | Rim Asm 6" front Service       |
| 6       | 532 12 49-57 | Fitting Grease                 |
| 7       | 532 12 49-59 | Bearing Flange                 |
| 8       | 532 13 83-37 | Rim Asm 8" rear Service        |
| 9       | 532 12 20-82 | Tire R Ts 20 x 10-8 Service    |
| 10      | 532 12 49-26 | Tube Rear 9 5 x 8 Service      |
| 11      | 532 17 50-39 | Cap Axle Blk 1 50 x 1 00       |
| --      | 532 14 43-34 | Sealant, Tire (10 oz. tube)    |

**NOTE:** All component dimensions given in U.S. inches.  
1 inch = 25.4 mm

# TRACTOR- -MODEL NO. CTH210 XP (96061007800) PRODUCT NO. 960 61 00-78 SCHEMATIC

03047\_197434



**IGNITION SWITCH**

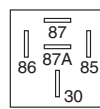
| POSITION     | CIRCUIT    | "MAKE" |
|--------------|------------|--------|
| OFF          | M+G+A1     |        |
| RUN/OVERRIDE | B+A1       |        |
| RUN          | B+A1       | L+A2   |
| START        | B + S + A1 |        |

**WIRING INSULATED CLIPS**  
NOTE: IF WIRING INSULATED CLIPS WERE REMOVED FOR SERVICING OF UNIT, THEY SHOULD BE REPLACED TO PROPERLY SECURE YOUR WIRING.

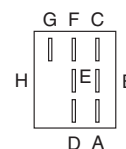
03047

**PTO SWITCH**

| POSITION | CIRCUIT             |
|----------|---------------------|
| OFF      | C + G, B + H        |
| ON       | C + F, B + E, A + D |



**RELAY**

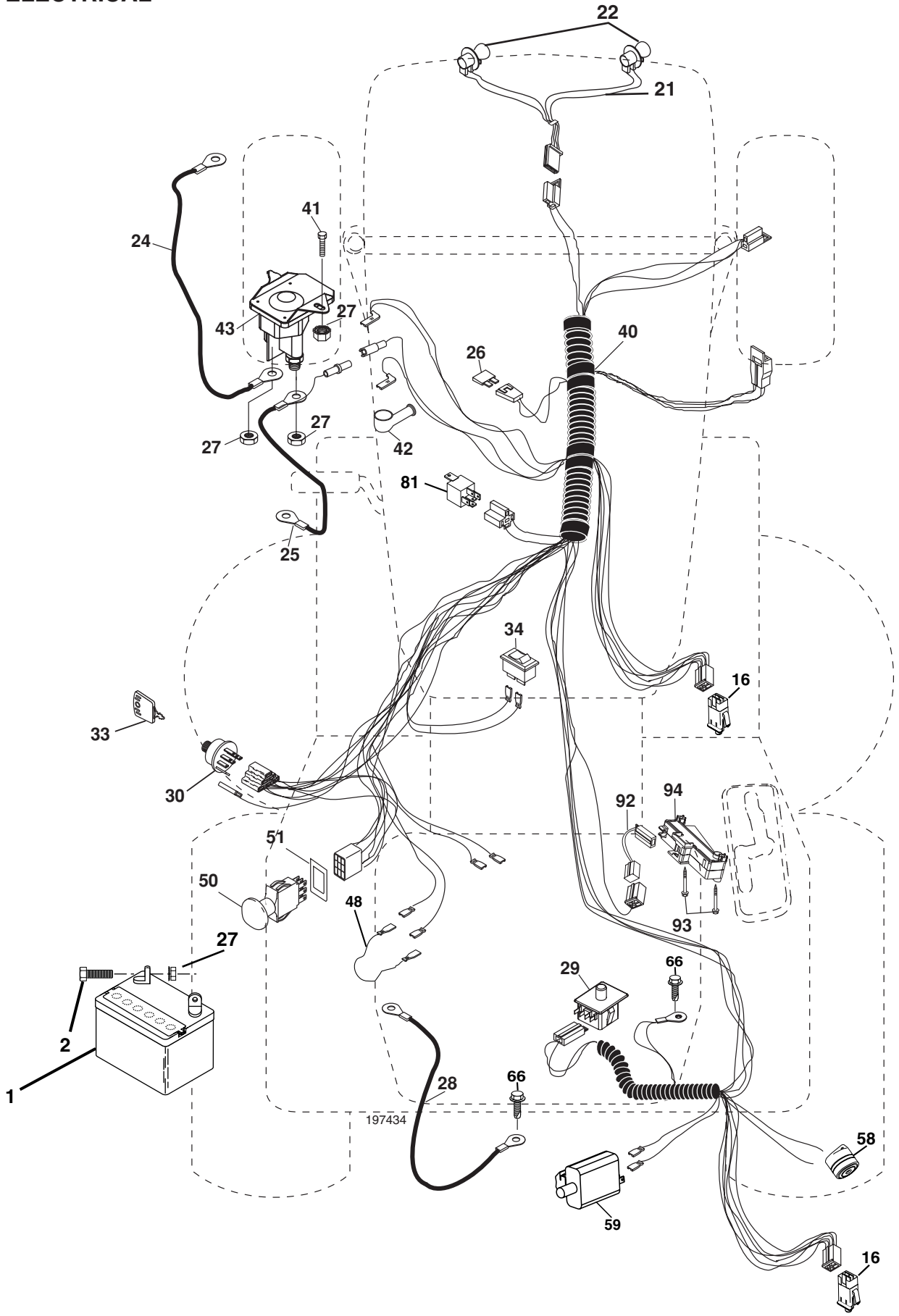


NON-REMOVABLE CONNECTIONS

REMOVABLE CONNECTIONS

# REPAIR PARTS

TRACTOR- -MODEL NO. CTH210 XP (96061007800) PRODUCT NO. 960 61 00-78  
ELECTRICAL



# REPAIR PARTS

TRACTOR- -MODEL NO. CTH210 XP (96061007800) PRODUCT NO. 960 61 00-78  
ELECTRICAL

| KEY NO. | PART NO.            | DESCRIPTION                       |
|---------|---------------------|-----------------------------------|
| 1       | 532 14 49-27        | Battery                           |
| 2       | 874 76 04-12        | Bolt Hex Hd 1/4-20 unc x 3/4      |
| 16      | 532 17 61-38        | Switch Interlock                  |
| 21      | 532 17 56-88        | Harness Asm Light W/4152J         |
| 22      | 532 00 41-52        | Bulb Light #1156                  |
| 24      | 532 12 47-80        | Cable Starter 6 Ga. 11" Red       |
| 25      | 532 16 59-87        | Cable Battery Crd 56" Red         |
| 26      | 532 17 51-58        | Fuse                              |
| 27      | 873 51 04-00        | Nut Keps Hex 1/4-20 unc           |
| 28      | 532 12 77-25        | Cable Ground 6 Ga. 18" Black      |
| 29      | 532 19 27-49        | Switch Seat                       |
| 30      | 532 19 33-50        | Switch Ignition                   |
| 33      | 532 14 04-01        | Key Ign Molded                    |
| 34      | 532 11 07-12        | Switch Light                      |
| 40      | 532 19 74-34        | Harness Ign                       |
| 41      | 871 11 04-08        | Bolt Flk Fin Hex 1/4-20 unc x 1/2 |
| 42      | 532 13 15-63        | Cover Terminal Red                |
| 43      | 532 19 25-07        | Solenoid                          |
| 46      | 532 19 81-38        | Gauge Serviceminder HRMTR         |
| 48      | <b>532 40 17-63</b> | Adapter Ammeter Rectangular       |
| 50      | 532 17 46-51        | Switch PTO                        |
| 51      | 532 14 04-05        | Ring Retainer PTO                 |
| 58      | 532 16 94-19        | Buzzer Crd                        |
| 59      | 532 18 03-79        | Switch FBI CRD                    |
| 66      | 817 49 06-08        | Screw Thdrol 3/8-16 x 1/2 Ty-Tt   |
| 81      | 532 10 97-48        | Relay Asm                         |
| 92      | 532 19 66-15        | Harness Pigtail                   |
| 93      | 532 19 25-40        | Screw Plastite 10-14 x 2.0        |
| 94      | 532 19 18-34        | Module Reverse                    |

**NOTE:** All component dimensions given in U.S. inches.  
1 inch = 25.4 mm.



# REPAIR PARTS

## TRACTOR- -MODEL NO. CTH210 XP (96061007800) PRODUCT NO. 960 61 00-78 CHASSIS AND ENCLOSURES

| KEY NO. | PART NO.     | DESCRIPTION  | KEY NO. | PART NO.     | DESCRIPTION                            |
|---------|--------------|--|---------|--------------|--|
| 1       | 532 17 46-20 | Chassis  | 164     | 532 16 56-05 | Support Battery CRD                    |
| 2       | 532 18 03-84 | Drawbar  | 165     | 532 18 11-00 | Cover Battery                          |
| 3       | 817 06 06-12 | Screw 3/8-16 x 3/4                                     | 170     | 532 19 94-88 | Backplate CRD                          |
| 5       | 532 15 52-72 | Bumper Hood/Dash                                       | 171     | 872 14 06-20 | Bolt Rdhd Sqnk<br>3/8-16 x 2-1/2 Gr. 5 |
| 6       | 532 18 44-19 | Saddle   | 172     | 819 13 20-16 | Washer 13/32 x 1-1/4 x 16 Ga.          |
| 8       | 532 12 64-71 | Clip Insulator 13/32 Mtg. Hole                         | 173     | 873 51 06-00 | Nut, Keps Hex 3/8-16 unc               |
| 9       | 532 19 48-20 | Dash   | 175     | 532 18 82-03 | Door Trap                              |
| 10      | 872 14 06-08 | Bolt, Carriage 3/8-16 x 3/4                            | 179     | 532 18 82-02 | Rod Pivot FBI CRD                      |
| 11      | 532 17 49-96 | Panel, Dash, L.H.                                      | 184     | 532 17 46-62 | Bracket Actuator Bagger CRD            |
| 13      | 532 17 21-06 | Panel, Asm. Dash R.H.                                  | 185     | 532 18 11-01 | Knob Rod Brake Parking                 |
| 15      | 874 18 05-12 | Screw, Machine, Truss Head<br>5/16-18 unc x 3/4        | 186     | 532 16 07-93 | Latch Asm Mulch/Bagger                 |
| 16      | 873 51 05-00 | Nut  | 187     | 532 12 50-04 | Nut Weld                               |
| 17      | 532 18 88-93 | Hood   | 188     | 819 06 12-16 | Washer #10                             |
| 18      | 532 18 49-21 | Bumper Hood  | 189     | 810 07 10-00 | Washer Lock #10                        |
| 24      | 874 78 06-16 | Bolt   | 190     | 871 08 10-10 | Screw Pan Hd Phillip 10-24 x 5/8       |
| 25      | 819 13 13-12 | Washer 13/32 x 13/16 x 12 Ga.                          | 198     | 532 16 89-37 | Nut, Push                              |
| 26      | 873 80 06-00 | Nut  | 205     | 817 49 06-08 | Screw Thdrol 3/8-16 x 1/2              |
| 28      | 532 18 35-38 | Grille /Lens Asm (Includes Key<br>Nos. 212, 258 - 261) | 207     | 817 67 05-08 | Screw Thdrl. 5/16-18 x 1/2             |
| 30      | 532 19 73-76 | Fender   | 208     | 817 67 06-08 | Screw Thdrol 3/8-16 x 1/2              |
| 31      | 532 16 51-56 | Bracket, Fender Support                                | 209     | 817 00 06-12 | Screw Hex Wsh Thdrol 3/8-16            |
| 33      | 532 18 10-57 | Footrest, L.H.   | 212     | 532 18 35-48 | Insert Lens Reflect                    |
| 34      | 532 18 10-58 | Footrest, R.H.   | 256     | 532 18 13-61 | Cover Fender Rack                      |
| 35      | 872 11 06-06 | Bolt   | 258     | 532 18 52-14 | Lens RH                                |
| 37      | 817 49 05-08 | Screw Thdrol 5/16-18 x 1/2 TYT                         | 259     | 532 18 52-13 | Lens LH                                |
| 38      | 532 18 17-48 | Bracket Asm Pivot Mower Rear                           | 260     | 532 18 52-16 | Cover Lens                             |
| 39      | 532 17 47-14 | Bracket Pivot  | 261     | 532 18 52-12 | Insert Grille                          |
| 58      | 532 18 45-38 | Duct Air Engine  | 265     | 532 18 57-04 | Seal RH Side Bagger                    |
| 69      | 532 14 24-32 | Screw HxWsh Hi-Lo                                      | 266     | 532 18 57-03 | Seal LH Side Bagger                    |
| 89      | 532 19 73-77 | Console CRD 418  | 272     | 532 18 88-96 | Vent Hood RH                           |
| 145     | 532 15 65-24 | Rod Pivot Chassis/Hood                                 | 273     | 532 18 88-95 | Vent Hood LH                           |
| 162     | 532 18 03-82 | Bracket Exten Chassis Lh CRD                           | 278     | 532 19 16-11 | Screw 10 x 3/4 Single Lead Hex         |
| 163     | 532 18 03-83 | Bracket Exten Chassis Rh CRD                           |         |              |  |

**NOTE:** All component dimensions given in U.S. inches.  
1 inch = 25.4 mm.





# REPAIR PARTS

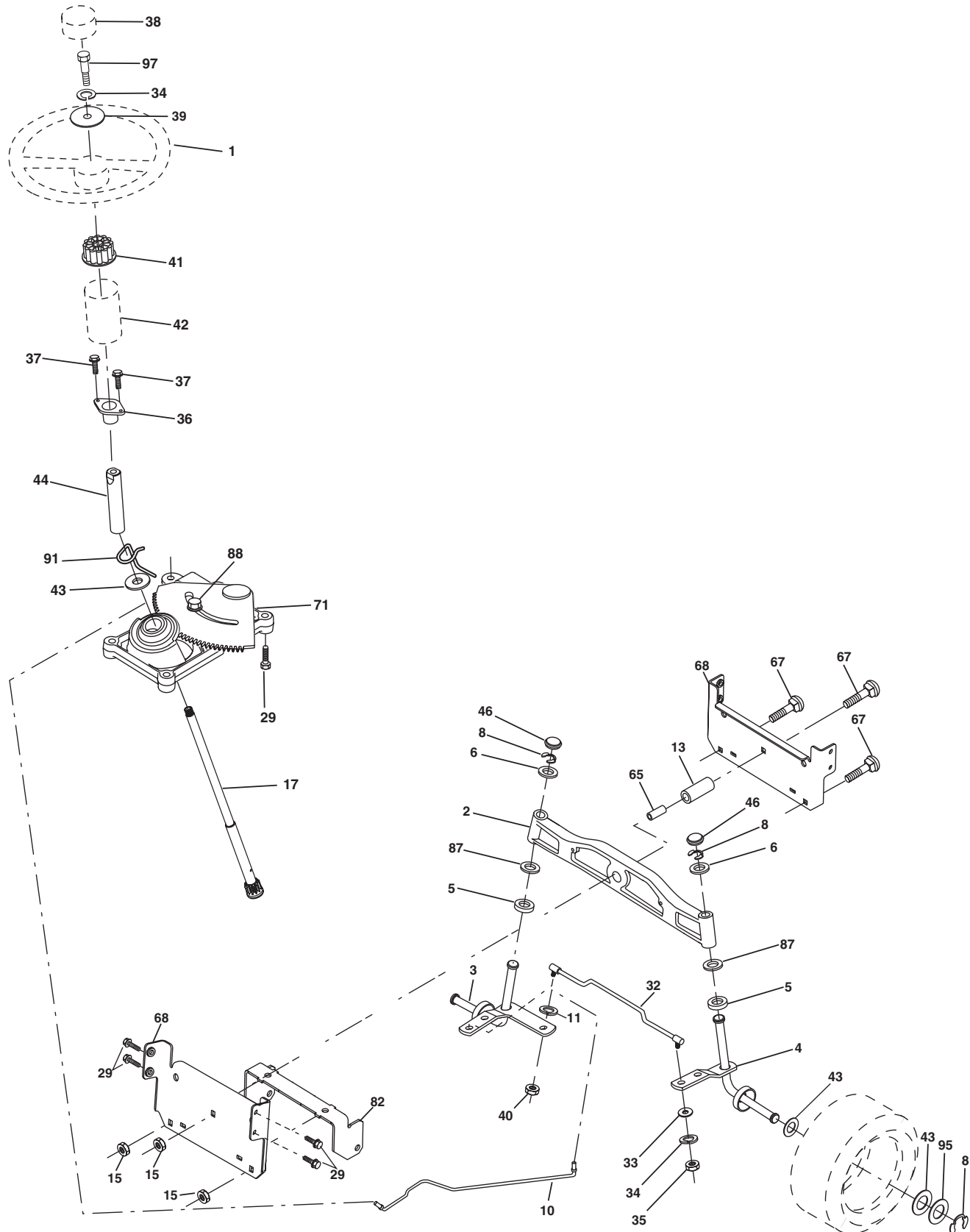
TRACTOR- -MODEL NO. CTH210 XP (96061007800) PRODUCT NO. 960 61 00-78  
DRIVE

| KEY NO. | PART NO.     | DESCRIPTION  | KEY NO. | PART NO.     | DESCRIPTION                         |
|---------|--------------|--|---------|--------------|-------------------------------------|
| 1       | -----        | Transaxle Hydro Gear 321-0510<br>(Order parts from transaxle manufacturer) | 82      | 532 16 57-11 | Spring, Torsion                     |
| 8       | 532 19 27-06 | Rod, Shift Fender Adjust Lt  | 83      | 819 17 12-16 | Washer 17/32 x 3/4 x 16 Ga.         |
| 9       | 532 19 81-43 | Clutch Ele   | 84      | 532 17 00-07 | Link, Transaxle                     |
| 10      | 876 02 04-16 | Pin, Cotter 1/8 x 1  | 95      | 532 17 00-15 | Control Asm Bypass Hydro            |
| 14      | 810 04 04-00 | Washer, Lock Hvy Helical   | 96      | 532 12 47-88 | Spring, Retainer 1"                 |
| 15      | 874 49 05-44 | Bolt Hex FGHD 5/16-18 x Gr. 5  | 112     | 819 09 12-10 | Washer 9/32 x 3/4 x 10 Ga.          |
| 16      | 873 80 05-00 | Nut, Lock Hex w/Ins 5/16-18 unc  | 120     | 873 90 06-00 | Nut Lock Flg. 3/8-16 unc            |
| 17      | 532 12 61-97 | Washer 1-1/2 OD x 15/32 ID x .250  | 150     | 532 16 58-50 | Bushing, Bellcrank Grnd Dr.         |
| 19      | 873 80 06-00 | Nut Lock Hex W/Ins 3/8-16 unc  | 151     | 819 13 32-10 | Washer 13/32 x 2 x 10 Ga.           |
| 20      | 532 17 39-37 | Bolt, Hex 7/16-20 x 4  | 156     | 532 16 60-02 | Washer Srrted 5/16ID x 1.125        |
| 21      | 532 12 12-74 | Knob Duckhead 1/4-13 unc Blk   | 158     | 532 16 55-89 | Bracket Shift Mount                 |
| 22      | 532 17 56-07 | Rod, Brake   | 159     | 532 18 39-00 | Hub Shift                           |
| 24      | 873 35 06-00 | Nut  | 161     | 872 14 04-06 | Bolt Rdhd Sqnk 1/4-20 x 3/4 Gr. 5   |
| 25      | 532 19 20-36 | Spring, Rod, Brake   | 162     | 873 68 04-00 | Nut Crownlock 1/4-20 unc            |
| 26      | 819 13 13-16 | Washer 13/32 x 1 x 16 Ga.  | 163     | 874 78 04-16 | Bolt Hex Fin 1/4-20 unc x 1 Gr. 5   |
| 27      | 876 02 04-12 | Pin, Cotter 1/8 x 3/4  | 165     | 532 16 56-23 | Bracket Pivot Lever                 |
| 28      | 532 17 57-65 | Rod, Parking Brake   | 166     | 817 49 05-10 | Screw 5/16-18 x 5/8                 |
| 29      | 532 07 16-73 | Cap, Parking Brake   | 167     | 532 16 55-88 | Bracket Support Shift CRD           |
| 30      | 532 16 95-92 | Bracket, Mfg. Transaxle  | 168     | 532 16 54-92 | Bolt Shoulder 5/16-18 x .561        |
| 34      | 532 17 55-78 | Shaft, Asm Pedal Foot CRD  | 169     | 532 16 55-80 | Plate Fastening Lt                  |
| 35      | 532 12 01-83 | Bearing, Nylon   | 171     | 817 49 06-08 | Screw Thdrol 3/8-16 x 1/2 Ty-Tt     |
| 36      | 819 21 16-16 | Washer 21/32 x 1 x 16 Ga.  | 172     | 532 17 02-71 | Shaft Asm Shifter Frt CRD           |
| 37      | 532 12 49-63 | Pin, Roll 3/16 x 1"  | 177     | 532 16 59-32 | Keeper Flat Idler 3.06" CRD         |
| 38      | 532 16 59-36 | Pulley Flat Composite 3.06"  | 181     | 532 18 02-11 | Bracket Idler Ground Drive CRD      |
| 39      | 874 76 06-44 | Bolt Fin Hex 3/8-16 unc x 2-3/4  | 182     | 532 18 26-82 | Keeper Belt 2.5" Od V-Idler CRD     |
| 40      | 532 12 49-65 | Spacer, Split 395 x 59 Bzp   | 183     | 532 18 60-07 | Pulley V-Idler 2.50" Od CRD         |
| 42      | 819 13 13-12 | Washer 13/32 x 13/16 x 12 Ga.  | 185     | 532 17 00-08 | Link Shift                          |
| 43      | 819 11 10-12 | Washer 11/32 x 5/8 x 12 Ga.  | 186     | 532 16 56-14 | Hub Tapered Round CRD               |
| 47      | 532 12 77-83 | Pulley, Idler, V Groove Plasic   | 187     | 817 58 05-20 | Screw Thdrol 5/16-18 x 1.25         |
| 48      | 532 15 44-07 | Bellcrank Clutch Grnd Drv  | 197     | 532 16 96-13 | Nyliner Snap-In 5/8                 |
| 49      | 532 12 32-05 | Retainer, Belt Style Spring  | 199     | 532 16 96-12 | Bolt Shoulder 5/16-18 unc           |
| 50      | 872 11 06-12 | Bolt 3/8-16 x 1-1/2 Gr. 5  | 200     | 872 14 05-08 | Bolt RDHD SQNK 5/16-18 x 1          |
| 51      | 873 68 06-00 | Nut, Crownlock 3/8-16 unc  | 207     | 532 16 98-45 | Washer Nylon Rear                   |
| 52      | 873 6805-00  | Nut Crownlock 5/16-18  | 214     | 532 17 56-09 | Shaft Asm. Brake                    |
| 53      | 532 19 96-52 | Link, Clutch 7.66  | 215     | 532 17 56-52 | Rod Brake Hydro                     |
| 55      | 532 10 57-09 | Spring, Return, Clutch   | 243     | 532 19 07-36 | Bracket Anti-Rotation               |
| 56      | 817 06 06-20 | Screw 3/8-16 x 1-1/4   | 252     | 819 13 16-16 | Washer 13/32 x 1 x 16 Ga.           |
| 57      | 532 17 01-40 | V-Belt Kev 112" 0650 CRD   | 254     | 817 00 06-16 | Screw 3/8-16 x 1                    |
| 62      | 532 12 35-33 | Cover, Pedal   | 255     | 532 17 56-08 | Brace Shaft Brake Mtg.              |
| 63      | 532 18 03-97 | Pulley, Engine   | 258     | 532 17 80-62 | Clip Retainer                       |
| 65      | 810 04 07-00 | Washer   | 259     | 532 18 02-12 | Bracket Pulley IDL Hydro Grd. Dr.   |
| 66      | 532 15 47-78 | Keeper, Belt Engine F-Proof  | 260     | 532 19 76-07 | Bracket Idler Chassis               |
| 71      | 532 16 91-83 | Strap, Torque, Lh  | 261     | 532 13 14-94 | Pulley Idler Flat                   |
| 73      | 532 16 91-82 | Strap, Torque, Rh  | 262     | 872 11 06-22 | Bolt Rdhd 3/8-16 unc x 2-3/4 Gr. 5  |
| 74      | 532 13 70-57 | Spacer, Split  | 263     | 817 00 06-12 | Screw HXWSH THDROL 3/8-16 x 3/4 Blk |
| 75      | 532 12 17-49 | Washer 25/32 x 1-1/4 x 16 Ga.  | 266     | 532 18 20-61 | Shield Idler Mower CRD              |
| 76      | 812 00 00-01 | Ring, E  | 279     | 872 11 06-16 | Bolt Carr. Sh. 3/8-16 x 1-3/4 Gr. 2 |
| 77      | 532 12 35-83 | Key, Square  | 292     | 532 40 02-71 | Spacer Noram CRD                    |
| 78      | 532 12 17-48 | Washer 25/32 x 1-5/8 x 16 Ga.  | 295     | 532 17 91-14 | Pulley Idler Composite              |
| 81      | 532 17 00-06 | Asm, Shaft   |         |              |                                     |

**NOTE:** All component dimensions given in U.S. inches  
1 inch = 25.4 mm

# REPAIR PARTS

TRACTOR- -MODEL NO. CTH210 XP (96061007800) PRODUCT NO. 960 61 00-78  
STEERING ASSEMBLY



steering\_pl.it\_60

# REPAIR PARTS

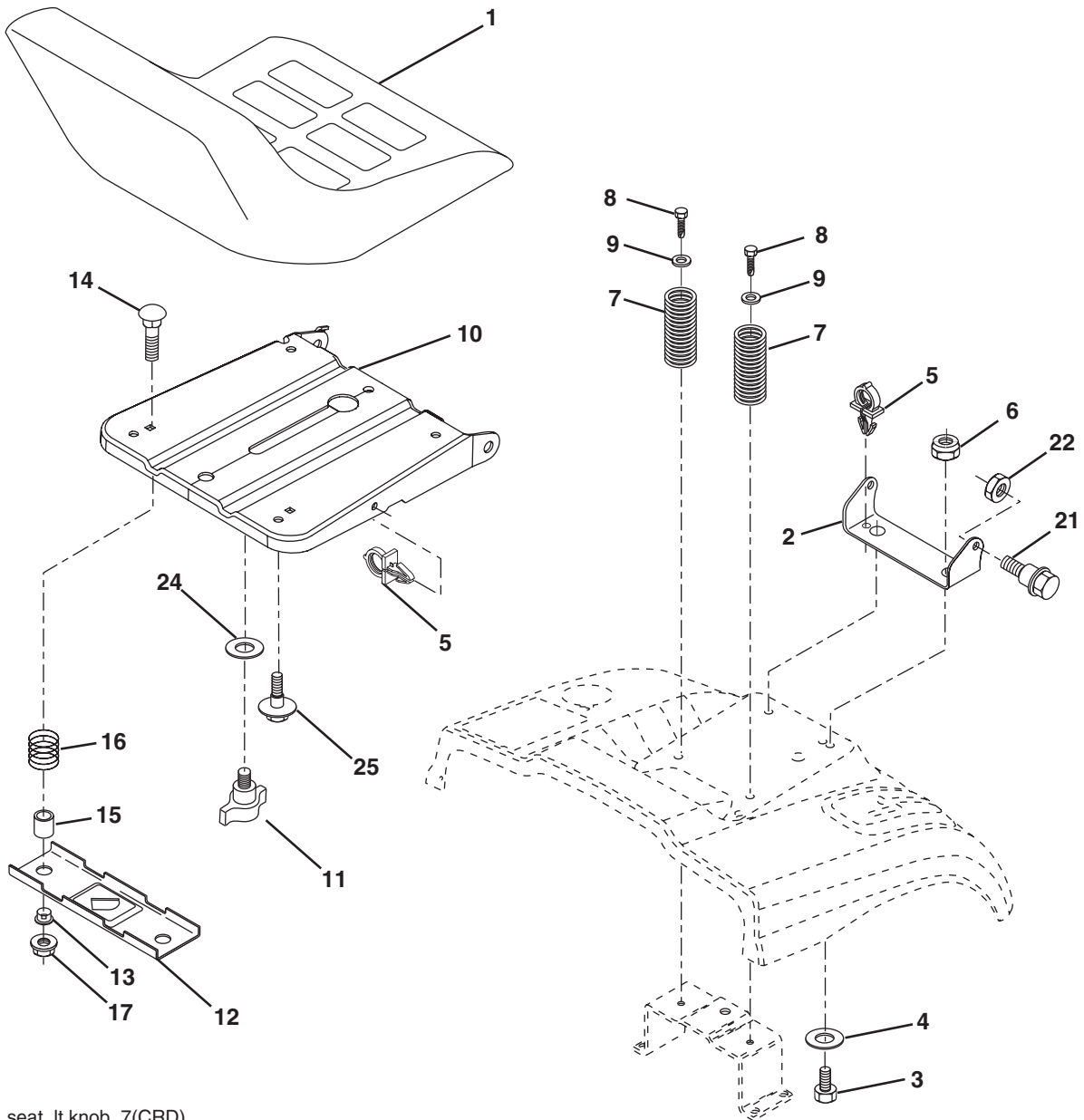
TRACTOR- -MODEL NO. CTH210 XP (96061007800) PRODUCT NO. 960 61 00-78  
STEERING ASSEMBLY

| KEY NO. | PART NO.     | DESCRIPTION                          |
|---------|--------------|--------------------------------------|
| 1       | 532 19 36-51 | Steering Wheel                       |
| 2       | 532 18 47-06 | Axle Asm Cast Iron Lt                |
| 3       | 532 16 98-40 | Spindle Assembly, L.H.               |
| 4       | 532 16 98-39 | Spindle Assembly, R.H.               |
| 5       | 532 12 49-31 | Bearing, Race, Thrust, Hardened      |
| 6       | 532 12 17-48 | Washer 25/32 x 1-5/8 x 16 Ga.        |
| 8       | 812 00 00-29 | Ring, Klip                           |
| 10      | 532 17 51-21 | Link, Drag                           |
| 11      | 810 04 06-00 | Washer, Lock                         |
| 13      | 532 13 65-18 | Spacer Brg Axle Front                |
| 15      | 532 14 52-12 | Nut Hex Flange Lock                  |
| 17      | 532 19 07-53 | Shaft, Steering                      |
| 29      | 817 00 06-12 | Screw 3/8-16 x 3/4                   |
| 32      | 532 17 18-88 | Rod, Tie                             |
| 33      | 819 11 12-16 | Washer 11/32 x 3/4 x 16 Ga.          |
| 34      | 810 04 05-00 | Washer Lock Hvy Hlcl Spr 5/16        |
| 35      | 873 54 05-00 | Crownlock Nut 5/16-24 unf 3847       |
| 36      | 532 15 50-99 | Bushing, Steering                    |
| 37      | 532 15 29-27 | Screw TT #10-32 x 5 x 3/8 Flange     |
| 38      | 532 19 36-52 | Cap Wheel Steering                   |
| 39      | 819 11 38-12 | Washer 11/32 ID x 2- 3/8 OD x 12 Ga. |
| 40      | 876 54 06-00 | Nut Lock 3/8-24                      |
| 41      | 532 18 67-37 | Adaptor, Steering Wheel              |
| 42      | 532 16 96-34 | Boot, Steering Dash P/L Mtl          |
| 43      | 532 12 17-49 | Washer 25/32 x 1-1/4 x 16 Ga.        |
| 44      | 532 19 07-52 | Extension Steering Shaft             |
| 46      | 532 12 12-32 | Cap, Spindle                         |
| 65      | 532 16 03-67 | Spacer Brace Axle                    |
| 67      | 872 11 06-18 | Bolt Rdhd Sqnk 3/8-16 x 2-1/4        |
| 68      | 532 16 98-27 | Brace Axle                           |
| 71      | 532 17 51-46 | Steering Asm.                        |
| 82      | 532 19 99-78 | Bracket Susp Chassis Front           |
| 87      | 532 17 39-66 | Washer Flat .781 x 1 1/2 x .14       |
| 88      | 532 17 51-18 | Bolt Shoulder 7/16-20 unc            |
| 91      | 532 17 55-53 | Clip Steering                        |
| 95      | 532 18 89-67 | Washer                               |
| 97      | 874 78 05-64 | Bolt 5/16-18 unc x 4" L. Gr. 5       |

**NOTE:** All component dimensions given in U.S. inches.  
1 inch = 25.4 mm.

# REPAIR PARTS

TRACTOR- -MODEL NO. CTH210 XP (96061007800) PRODUCT NO. 960 61 00-78  
SEAT ASSEMBLY



seat\_lt.knob\_7(CRD)

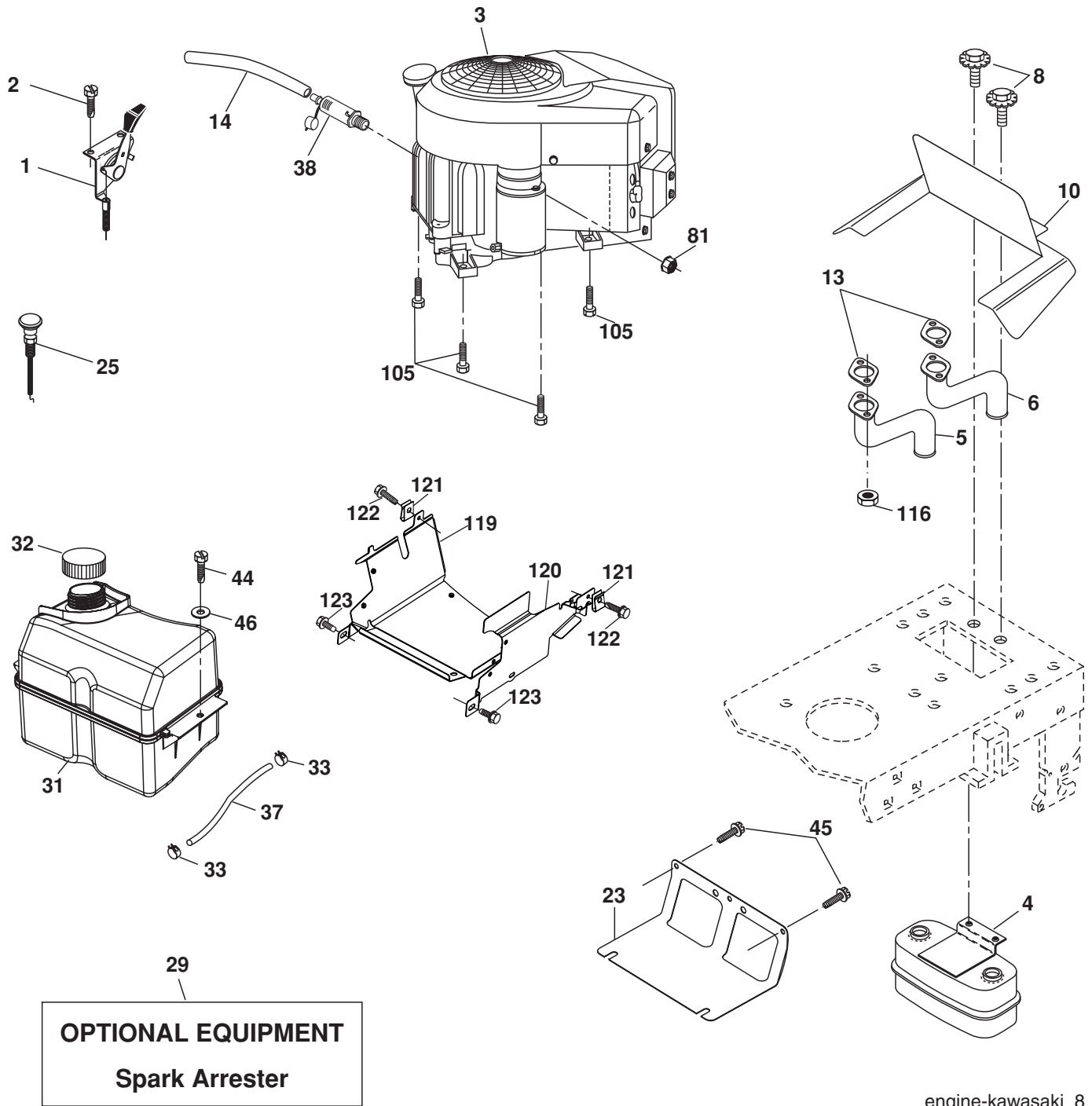
| KEY NO. | PART NO.     | DESCRIPTION                    |
|---------|--------------|--------------------------------|
| 1       | 532 18 87-15 | Seat                           |
| 2       | 532 14 05-51 | Bracket Pnt Pivot Seat (blk )  |
| 3       | 871 11 06-16 | Bolt Fin Hex 3/8-16 x 1        |
| 4       | 819 13 16-10 | Washer Flat 13/32 x 1 x 10 Ga. |
| 5       | 532 14 50-06 | Clip Push In Hinged            |
| 6       | 873 80 06-00 | Nut Lock Hx w/Ins. 3/8-16      |
| 7       | 532 12 41-81 | Spring Seat Cprsn 2 250 Blk Zi |
| 8       | 817 00 06-16 | Screw 3/8-16 x 1-1/2           |
| 9       | 819 13 16-14 | Washer 13/32 x 1 x 14 Ga.      |
| 10      | 532 19 55-30 | Pan Pnt Seat                   |
| 11      | 532 16 63-69 | Knob Seat Adj. Wingnut         |
| 12      | 532 17 46-48 | Bracket Pnt Mounting Switch    |

| KEY NO. | PART NO.     | DESCRIPTION                     |
|---------|--------------|---------------------------------|
| 13      | 532 12 12-48 | Bushing Snap Blk Nyl 50 Id      |
| 14      | 872 05 04-12 | Bolt Rdhd Sht Nk 1/4-20 x 1-1/2 |
| 15      | 532 12 12-49 | Spacer Split                    |
| 16      | 532 12 37-40 | Spring Cprsn Plate SW 1.310 Ga. |
| 17      | 532 12 39-76 | Nut Lock 1/4 Lge Flg Gr 5 Zinc  |
| 21      | 532 17 18-52 | Bolt Shoulder 5/16-18 unc-2A    |
| 22      | 873 80 05-00 | Nut Hex Lock w/Ins 5/16-18      |
| 24      | 819 17 19-12 | Washer 17/32 x 1-3/16 x 12 Ga.  |
| 25      | 532 12 70-18 | Bolt Shoulder 5/16-18 x 62      |

**NOTE:** All component dimensions given in U.S. inches.  
1 inch = 25.4 mm

# REPAIR PARTS

TRACTOR- -MODEL NO. CTH210 XP (96061007800) PRODUCT NO. 960 61 00-78  
ENGINE



engine-kawasaki\_8

# REPAIR PARTS

TRACTOR- -MODEL NO. CTH210 XP (96061007800) PRODUCT NO. 960 61 00-78  
ENGINE

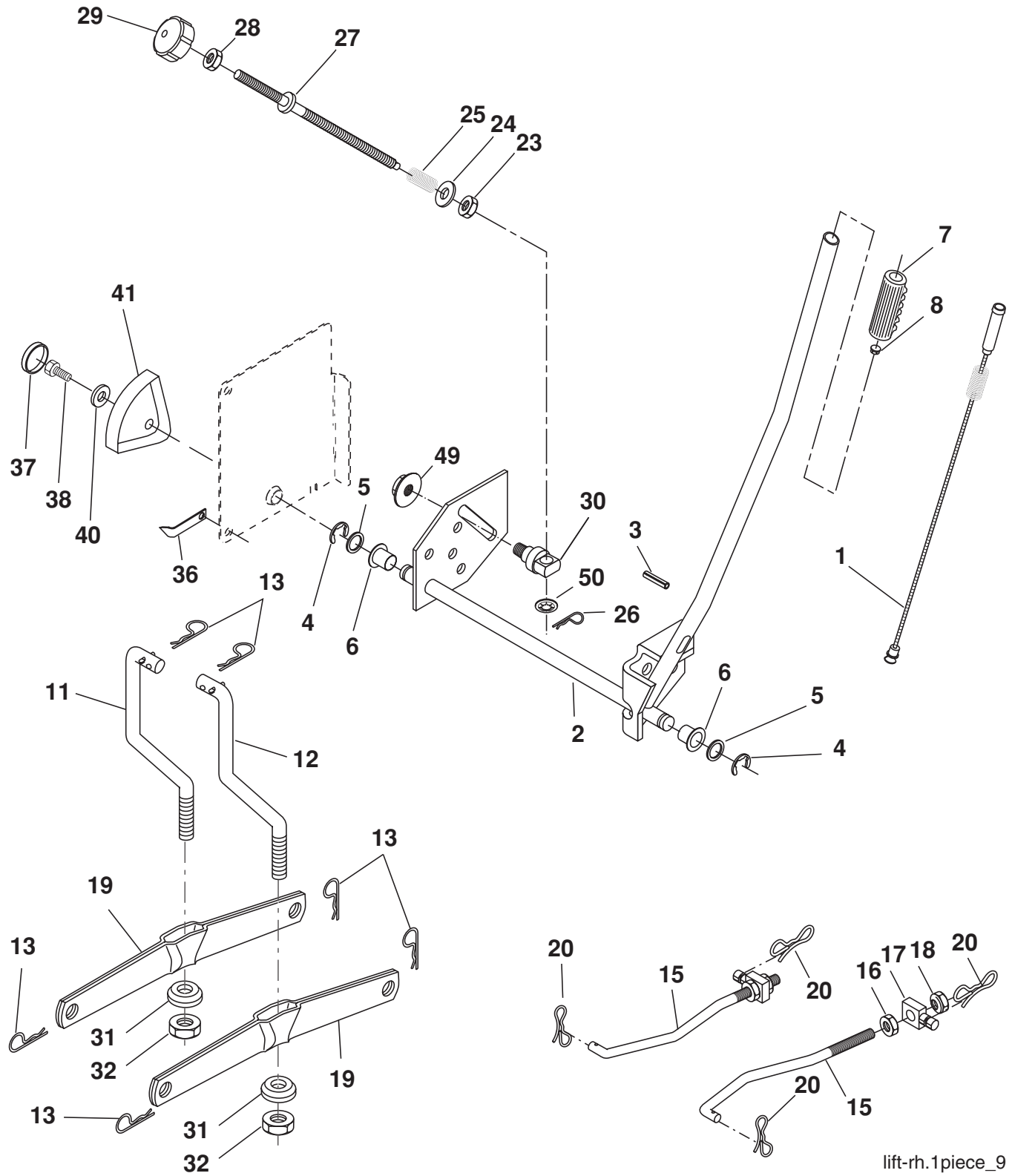
| KEY NO. | PART NO.     | DESCRIPTION  |
|---------|--------------|--|
| 1       | 532 18 69-68 | Control Throttle   |
| 2       | 817 72 04-08 | Screw Hex Thd Cut 1/4-20 x 1/2                                   |
| 3       | -----        | Engine KAWASAKI FH641V<br>(Order parts from engine manufacturer) |
| 4       | 532 14 97-23 | Muffler Twin Lo-Twin   |
| 5       | 532 18 45-79 | Tube, Manifold Lh  |
| 6       | 532 18 45-80 | Tube, Manifold Rh  |
| 8       | 532 17 18-77 | Bolt 5/16-18 unc x 3/4 w/Sems                                    |
| 10      | 532 14 66-29 | Shield Browning  |
| 13      | -----        | Gasket Muffler<br>(Order parts from engine manufacturer)         |
| 14      | 532 14 84-56 | Tube Drain Oil Easy  |
| 23      | 532 16 98-37 | Shield Brn/Dbr Guard   |
| 25      | 532 19 17-17 | Choke Control  |
| 29      | 532 13 71-80 | Kit Spark Arrestor (Flat Scrn)                                   |
| 31      | 532 18 55-34 | Tank Fuel 2.00   |
| 32      | 532 14 05-27 | Cap Asm Fuel W/sym Vented  |
| 33      | 532 12 34-87 | Clamp Hose Blk   |
| 37      | 532 13 70-40 | Line Fuel  |
| 38      | -----        | Plug Drain Oil Easy<br>(Order parts from engine manufacturer)    |
| 44      | 817 67 04-12 | Screw Hexwsh Thdrol 1/4-20 x 3/4                                 |
| 45      | 817 00 06-12 | Screw Hexwsh Thdrol 3/8-16 x 3/4                                 |
| 46      | 819 09 14-16 | Washer 9/32 x 7/8 x 16 Ga.                                       |
| 81      | 873 5104-00  | Nut Keps Hex 1/4-20 unc  |
| 105     | 817 12 06-16 | Screw 3/8-16 x 1   |
| 116     | 532 18 43-62 | Nut Flange M8-1.25   |

**NOTE:** All component dimensions given in U.S. inches.  
1 inch = 25.4 mm



# REPAIR PARTS

TRACTOR- -MODEL NO. CTH210 XP (96061007800) PRODUCT NO. 960 61 00-78  
MOWER LIFT



lift-rh.1piece\_9



# REPAIR PARTS

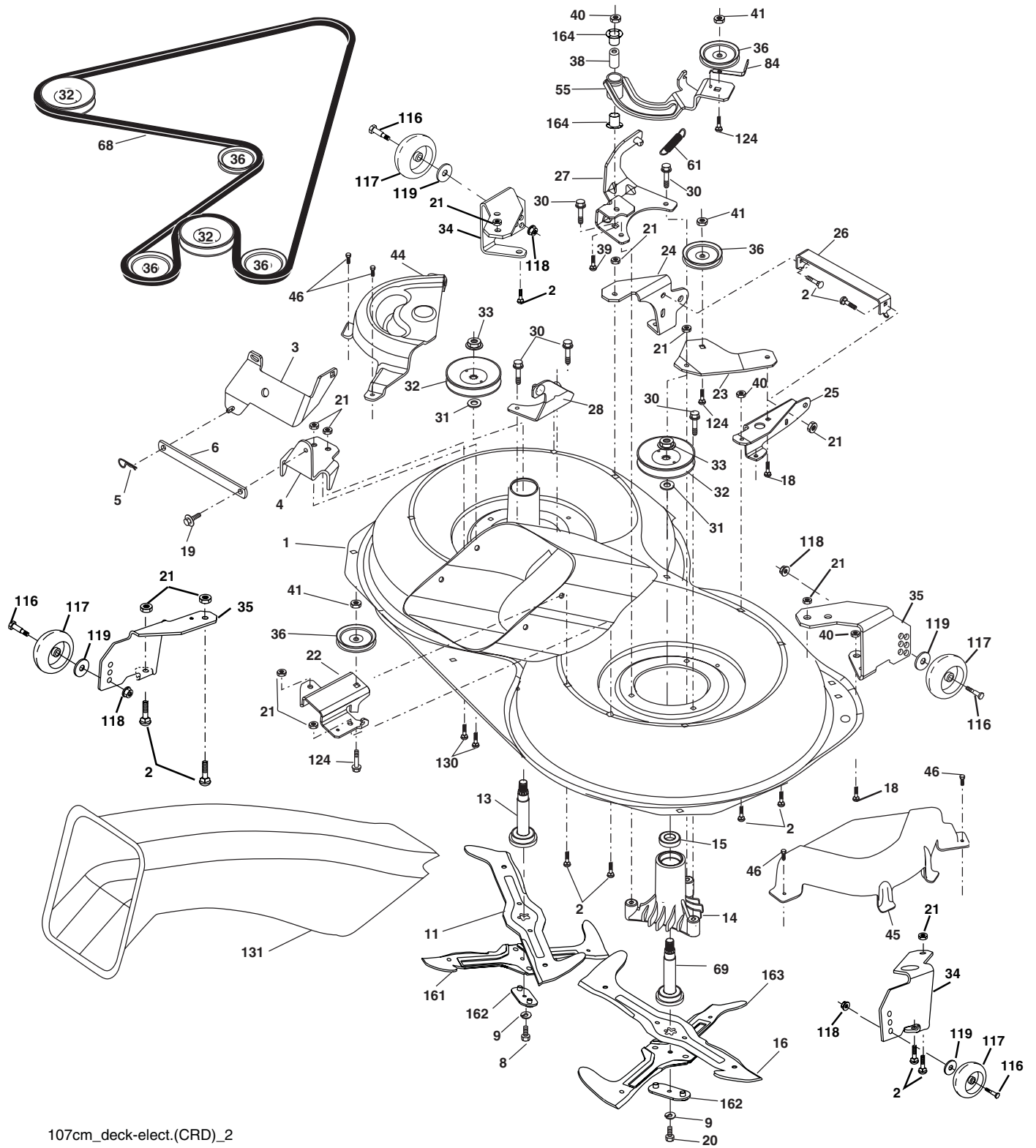
TRACTOR- -MODEL NO. CTH210 XP (96061007800) PRODUCT NO. 960 61 00-78  
MOWER LIFT

| KEY NO. | PART NO.     | DESCRIPTION                       |
|---------|--------------|-----------------------------------|
| 1       | 532 15 94-60 | Washer Asm Inner Spring W/Plunger |
| 2       | 532 15 94-71 | Shaft Asm. Lift                   |
| 3       | 532 10 57-67 | Pin Groove                        |
| 4       | 812 00 00-02 | E Ring #5133-62                   |
| 5       | 819 21 16-21 | Washer 21/32 x 1 x 21 Ga.         |
| 6       | 532 12 01-83 | Bearing Nylon                     |
| 7       | 532 12 56-31 | Grip Handle                       |
| 8       | 532 12 45-26 | Button Plunger Black              |
| 11      | 532 16 58-29 | Link Lift L.H.                    |
| 12      | 532 16 58-31 | Link Lift R.H.                    |
| 13      | 532 12 46-70 | Retainer Spring                   |
| 15      | 532 17 32-88 | Link Front                        |
| 16      | 873 35 08-00 | Nut Jam Hex 1/2-13 unc            |
| 17      | 532 17 56-89 | Trunnion                          |
| 18      | 873 80 08-00 | Nut Lock W/Wsh 1/2-13 unc         |
| 19      | 532 13 98-68 | Arm Suspension Mower              |
| 20      | 532 19 42-09 | Pin Cotter 7/16 Bow Tie Lock      |
| 23      | 532 11 08-07 | Nut Special                       |
| 24      | 819 13 10-16 | Washer 13/32 x 5/8 x 16 Ga.       |
| 25      | 532 12 48-74 | Spring 2-1/8                      |
| 26      | 532 16 94-84 | Retainer Clip                     |
| 27      | 532 12 69-71 | Rod Adj Lift Zinc                 |
| 28      | 873 35 06-00 | Nut Hex Jam 3/8-16 unc            |
| 29      | 532 13 80-57 | Knob Inf 3/8-16 unc               |
| 30      | 532 15 02-33 | Trunnion Infin Height             |
| 31      | 532 16 98-65 | Bearing, Pvt. Lift.               |
| 32      | 873 54 06-00 | Nut Crownlock 3/8-24              |
| 36      | 532 15 50-97 | Pointer Height Indicator          |
| 37      | 532 12 39-35 | Plug Hole Blk                     |
| 38      | 817 06 05-16 | Screw 5/16-18 x 1                 |
| 40      | 819 11 24-10 | Washer 11/32 x 1-1/2 x 10 Ga.     |
| 41      | 532 12 39-34 | Scale Ind Height Blk              |
| 49      | 532 14 52-12 | Nut Hex flange lock               |
| 50      | 532 11 04-52 | Nut Push Phos &Oil                |

**NOTE:** All component dimensions given in U.S. inches.  
1 inch = 25.4 mm

# REPAIR PARTS

TRACTOR- -MODEL NO. CTH210 XP (96061007800) PRODUCT NO. 960 61 00-78  
MOWER



107cm\_deck-elect.(GRD)\_2

# REPAIR PARTS

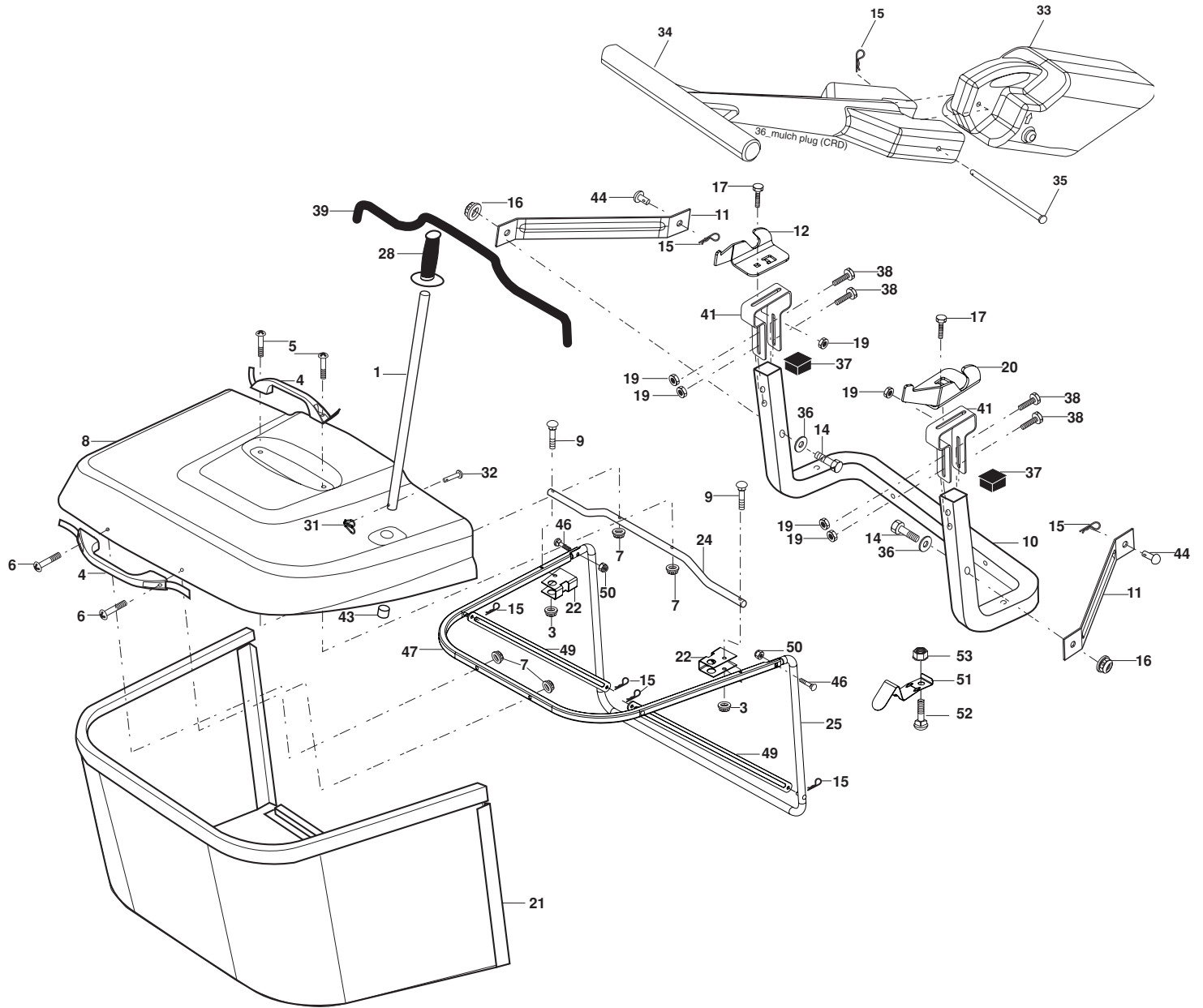
TRACTOR- -MODEL NO. CTH210 XP (96061007800) PRODUCT NO. 960 61 00-78  
MOWER

| KEY NO. | PART NO.     | DESCRIPTION                         | KEY NO. | PART NO.     | DESCRIPTION  |
|---------|--------------|-------------------------------------|---------|--------------|--|
| 1       | 532 16 91-60 | Housing Asm. Mower                  |         |              | 5  |
| 2       | 872 14 05-06 | Bolt Rdhd Sqnk 5/16-18 unc x 3/4    | 40      | 873 68 06-00 | Nut Crownlock 3/8-16 unc   |
| 3       | 532 16 55-69 | Bracket Asm. S-Bar Chass            | 41      | 873 90 06-00 | Nut Flangelock 3/8-16 unc  |
| 4       | 532 16 91-67 | Bracket Bar Sway Deck               | 44      | 532 17 55-38 | Cover Mandrel Lh   |
| 5       | 532 12 46-70 | Retainer Spring                     | 45      | 532 17 55-39 | Cover Mandrel Rh   |
| 6       | 532 16 55-57 | Bar Sway                            | 46      | 532 13 77-29 | Screw Thd Roll 1/4-20 x 5/8  |
| 8       | 532 18 17-12 | Bolt 3/8-24 x 1.25 Gr. 8 Patched    | 55      | 532 16 98-49 | Arm Idler  |
| 9       | 810 03 06-00 | Washer Lock Hvy 3/8 Unplated        | 61      | 532 17 51-59 | Spring Tension Belt  |
| 11      | 532 18 05-83 | Blade 3-1 Lh                        | 68      | 532 16 91-78 | Hex-Belt Mower   |
| 13      | 532 13 76-45 | Shaft Asm. W/Lower Bearing          | 69      | 532 16 54-82 | Shaft Asm W/Lwr Brg Rh Thd CRD   |
| 14      | 532 12 87-74 | Housing Mandrel Vented (Machd)      |         |              |  |
| 15      | 532 11 04-85 | Bearing Ball Mandrel                | 84      | 532 15 60-85 | Keeper Belt Idler  |
| 16      | 532 18 05-84 | Blade 3-1 Rh                        | 116     | 532 18 42-19 | Bolt Shoulder  |
| 18      | 872 11 06-06 | Bolt 3/8-16 x 3/4                   | 117     | 532 17 48-73 | Wheel Gauge  |
| 19      | 532 13 28-27 | Bolt Shoulder 5/16-18 Thd Form      | 118     | 873 93 06-00 | Nut Centerlock 3/8-16 unc  |
| 20      | 532 18 17-13 | Bolt 3/8-24 x 1.25 Gr. 8 Ptch Lhthd | 119     | 819 12 14-14 | Washer 3/8 x 7/8 x 14 Ga.  |
| 21      | 873 68 05-00 | Nut Crown Lock 5/16-18              | 124     | 872 11 06-12 | Bolt Carr Sh 3/8-16 x 1-1/2 Gr. 5  |
| 22      | 532 16 91-65 | Bracket Idler Sprt RR               | 130     | 872 11 05-06 | Bolt Rdhdsqnk 5/16-18 unc x 3/4  |
| 23      | 532 16 91-66 | Bracket Idler Sprt RF               | 131     | 532 16 56-61 | Chute Bagger CRD 92cm  |
| 24      | 532 16 91-70 | Bracket Suspension LF               | 161     | 532 18 04-24 | Blade Cross LH 107   |
| 25      | 532 40 01-05 | Bracket Suspension RF               | 162     | 532 18 08-78 | Adapter Weldment Blade 107   |
| 26      | 532 40 01-10 | Brace Support Susp Frt CRD          | 163     | 532 18 04-25 | Blade Cross RH 107   |
| 27      | 532 16 91-72 | Bracket Asm. Susp RR                | 164     | 532 12 49-37 | Bearing  |
| 28      | 532 16 91-68 | Bracket Asm. Susp LR                | --      | 532 18 18-57 | Mandrel Asm Service VC   |
| 30      | 532 17 39-84 | Screw Thd Rolling Dod.PT Hex        | --      | 532 18 18-58 | Mandrel Asm CRD Lh Threads VC  |
| 31      | 532 18 76-90 | Washer Spacer                       | --      | 532 18 17-70 | Replacement Mower Complete (Std. Deck-Order separately gauge wheels components key nos. 116-119) |
| 32      | 532 17 57-07 | Mandrel Pulleys                     |         |              |  |
| 33      | 532 40 02-34 | Nut Flg Top Lock                    |         |              |  |
| 34      | 532 40 01-03 | Bracket Gauge Wheel LF/RR           |         |              |  |
| 35      | 532 40 01-04 | Bracket Gauge Wheel RF/LR           |         |              |  |
| 36      | 532 14 67-63 | Pulley Idler V-Groove Dim 4.25      |         |              |  |
| 38      | 532 16 98-51 | Spacer Hub Arm Idler                |         |              |  |
| 39      | 872 11 06-22 | Bolt RhHd 3/8-16 unc x 2-3/4 Gr.    |         |              |  |

**NOTE:** All component dimensions given in U.S. inches  
1 inch = 25.4 mm

# REPAIR PARTS

TRACTOR- -MODEL NO. CTH210 XP (96061007800) PRODUCT NO. 960 61 00-78  
BAGGER



Bagger Asy (CRD)\_11

# REPAIR PARTS

TRACTOR- -MODEL NO. CTH210 XP (96061007800) PRODUCT NO. 960 61 00-78  
BAGGER

| KEY NO. | PART NO.     | DESCRIPTION                           |
|---------|--------------|---------------------------------------|
| 1       | 532 16 52-49 | Tube Handle Bagger CRD                |
| 3       | 532 12 39-76 | Nut Lock 1/4 Lge Flg Gr. 5 Zinc       |
| 4       | 532 16 99-16 | Handle Bagger w/Lvrs Blk CRD          |
| 5       | 874 98 10-24 | Screw Pan Head #10-24 x 1.50 Blk      |
| 6       | 874 98 10-32 | Screw Pan Hd                          |
| 7       | 873 40 10-00 | Nut Wiz Lock Hex Serr/Hd 10-24        |
| 8       | 532 18 10-95 | Cover Bagger CRD MS422                |
| 9       | 872 14 04-18 | Bolt Carriage 1/4-20 x 2.25d x Gr. 5  |
| 10      | 532 18 12-82 | Tube Support Bagger CRD               |
| 11      | 532 16 57-19 | Bracket Support Upper Bag CRD         |
| 12      | 532 18 88-48 | Bracket Pivotn Lh                     |
| 14      | 874 52 06-36 | Bolt Carr.                            |
| 16      | 873 90 06-00 | Nut Lock Flg. 3/8-16 UNC              |
| 15      | 532 12 46-70 | Retainer Spring                       |
| 17      | 872 14 05-06 | Bolt Rdhd Sht Sqnk 5/16 -18 unc x 3/4 |
| 19      | 873 90 05-00 | Nut Lock Hexflange 5/16-18            |
| 20      | 532 18 88-47 | Bracket Pivot Rh                      |
| 21      | 532 19 38-38 | Bag Asm CRD                           |
| 22      | 532 16 57-81 | Bracket Side Bagger CRD               |
| 24      | 532 16 57-83 | Tube Pivot Bagger CRD                 |
| 25      | 532 19 37-05 | Tube Front Bagger CRD                 |
| 28      | 532 16 57-87 | Grip Handle Black                     |
| 31      | 532 16 94-84 | Retainer Clip                         |
| 32      | 532 12 68-75 | Rivet Rd Hd Drilled 3/8 Dia           |
| 33      | 532 16 93-80 | Plug Mulcher 92 CRD                   |
| 34      | 532 16 55-70 | Handle Mulcher 92/107 CRD             |
| 35      | 532 16 55-72 | Pin Mulcher 92/107 CRD                |
| 36      | 819 13 20-12 | Washer 13/32 x 1-1/4 x 12 Ga.         |
| 37      | 532 17 54-01 | Plug Support Bagger CRD               |
| 38      | 872 01 05-20 | Bolt 5/16-18 x 2-1/2                  |
| 39      | 532 18 09-85 | Seal 37"                              |
| 41      | 532 16 96-83 | Bracket Vert Adj Bagger CRD           |
| 43      | 532 17 40-83 | Plug Tubing                           |
| 44      | 532 19 33-12 | Pin Clevis                            |
| 46      | 873 11 05-10 | Bolt Carr. 5/16-18 x 1-1/4 Gr.5       |
| 47      | 532 19 37-04 | Tube Upper Bagger                     |
| 49      | 532 19 33-05 | Bar Spreader                          |
| 50      | 872 80 05-00 | Nut Lock Thx w/Ins. 5/16-18 UNC       |
| 51      | 532 19 99-03 | Latch Spring Bagger                   |
| 52      | 872 11 04-06 | Bolt Carr.                            |
| 53      | 873 51 04-00 | Nut Keps Hex 1/4-20 UNC               |

**NOTE:** All component dimensions given in U.S. inches  
1 inch = 25.4 mm