

# LTH1797

**Spare parts**

**Ersatzteile**

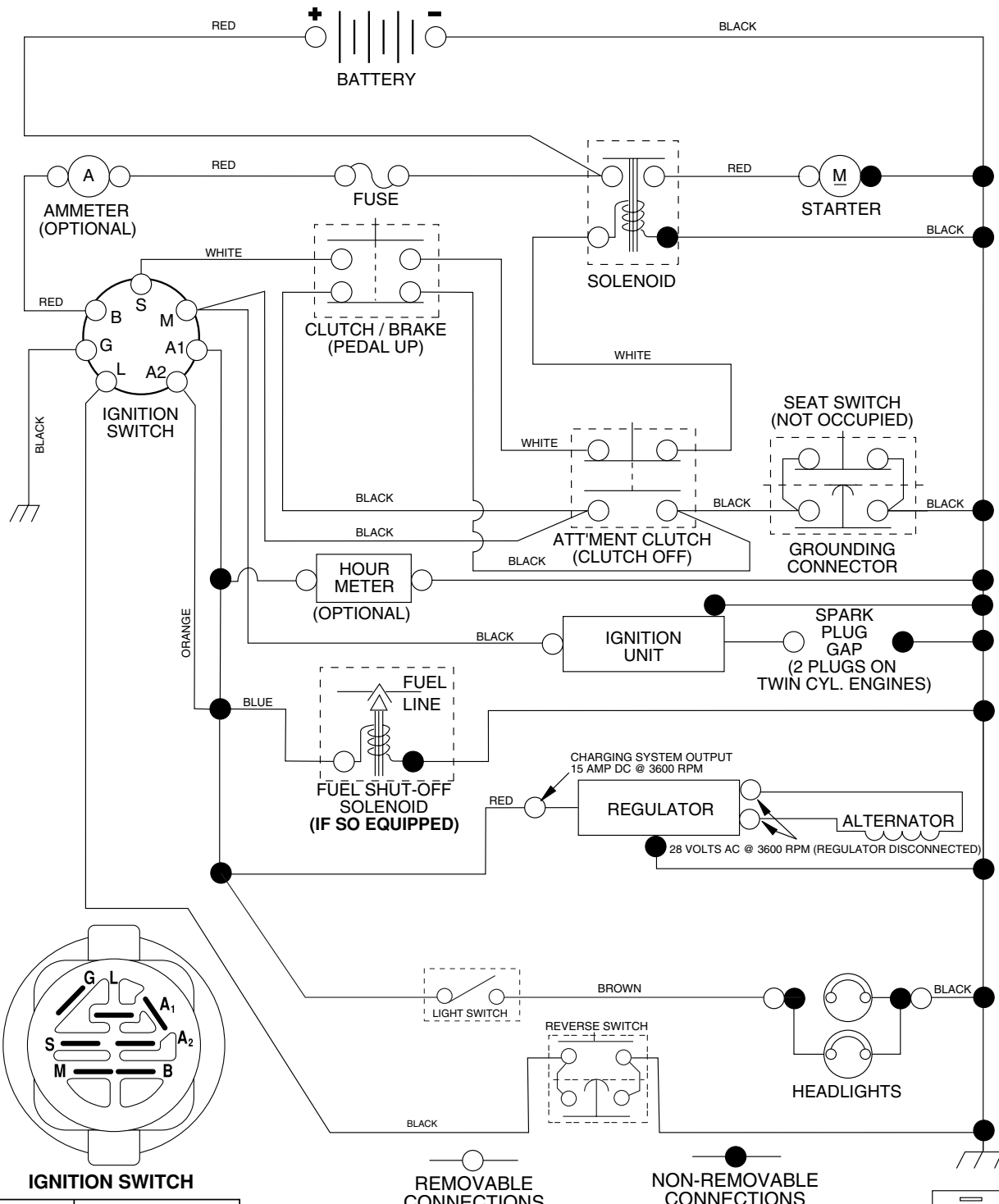
**Pièces détachées**

**Reserve onderdelen**

**Repuestos**

**Reservdelar**

# TRACTOR - MODEL NO. LTH1797 (96011022100), PRODUCT NO. 960 11 02-21 SCHEMATIC



## IGNITION SWITCH

| POSITION     | CIRCUIT "MAKE" |
|--------------|----------------|
| OFF          | M+G+A1         |
| RUN/OVERRIDE | B+A1           |
| RUN          | B+A1 L+A2      |
| START        | B + S + A1     |

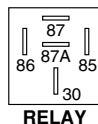
3054

REMOVABLE CONNECTIONS

NON-REMOVABLE CONNECTIONS

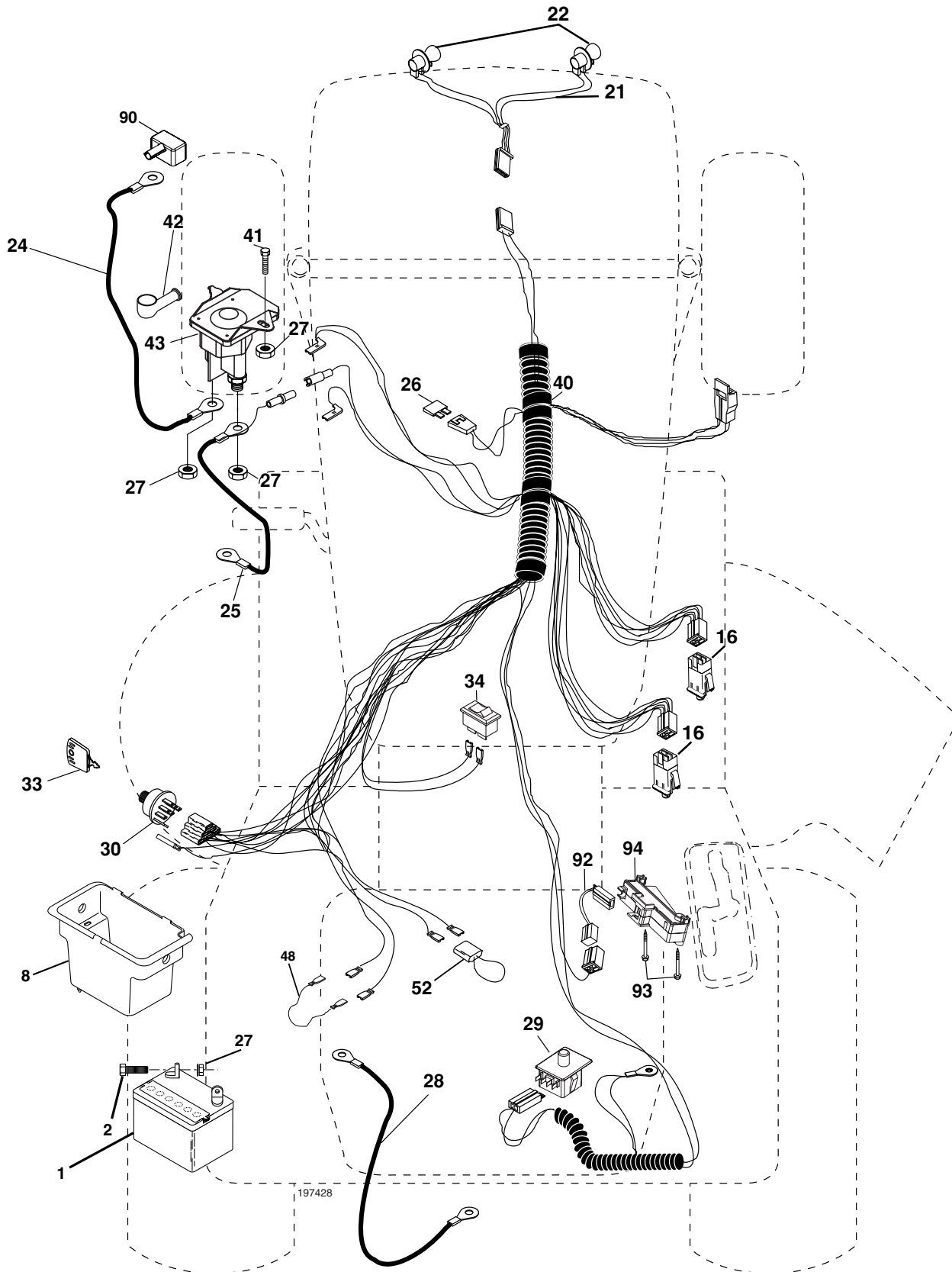
## WIRING INSULATED CLIPS

**NOTE:** IF WIRING INSULATED CLIPS WERE REMOVED FOR SERVICING OF UNIT, THEY SHOULD BE REPLACED TO PROPERLY SECURE YOUR WIRING.



# REPAIR PARTS

TRACTOR - MODEL NO. LTH1797 (96011022100), PRODUCT NO. 960 11 02-21  
ELECTRICAL



# REPAIR PARTS

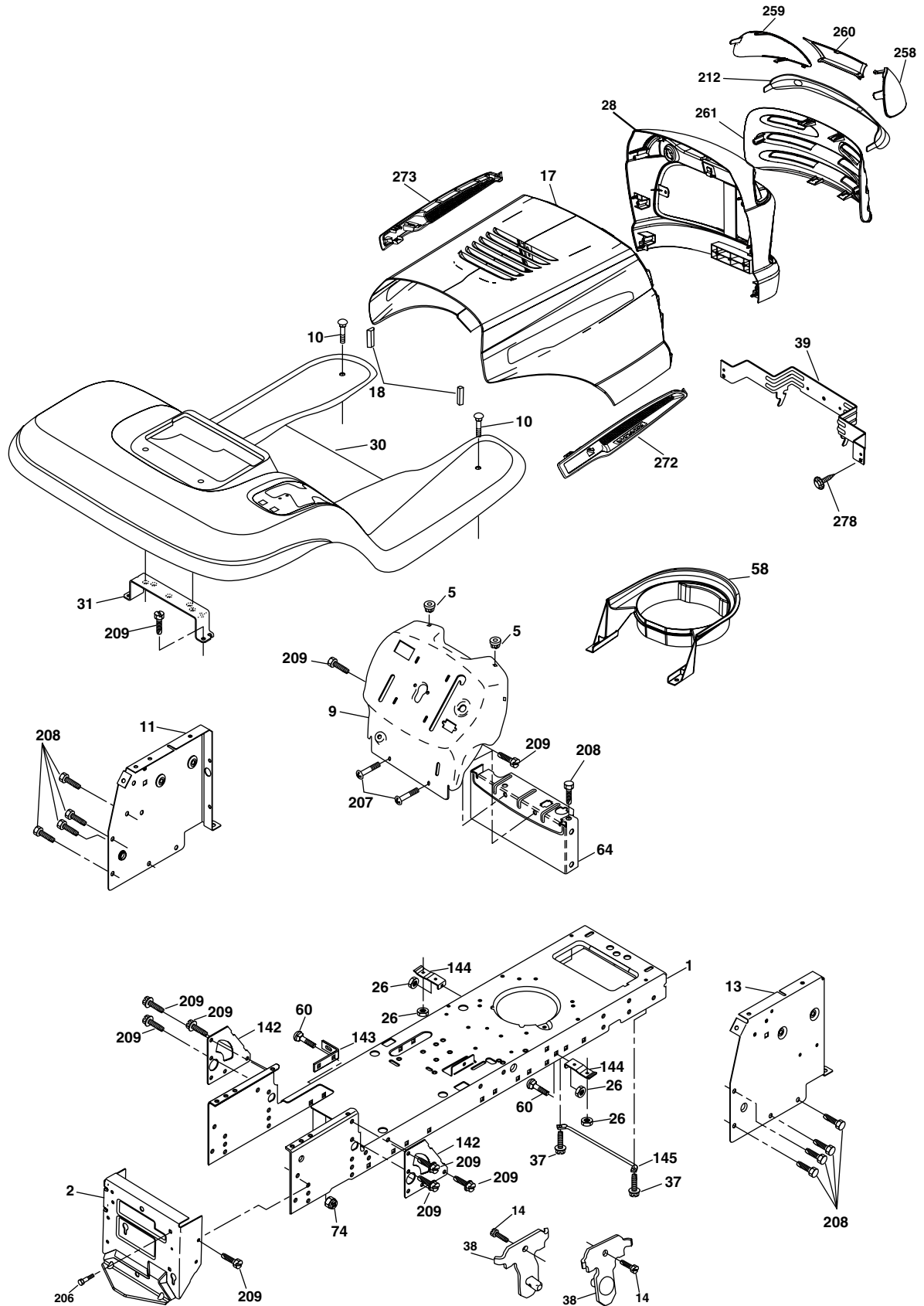
TRACTOR - MODEL NO. LTH1797 (96011022100), PRODUCT NO. 960 11 02-21  
ELECTRICAL

| KEY NO. | PART NO.     | DESCRIPTION                           |
|---------|--------------|---------------------------------------|
| 1       | 532 14 49-27 | Battery                               |
| 2       | 874 76 04-12 | Bolt Hex Hd 1/4-20 unc x 3/4          |
| 8       | 532 17 66-89 | Case Battery Mech Hinge               |
| 16      | 532 17 61-38 | Switch Interlock                      |
| 21      | 532 17 56-88 | Harness Asm Light W/4152j             |
| 22      | 532 00 41-52 | Bulb Light #1156                      |
| 24      | 532 12 47-80 | Cable Battery 6 Ga. 11" red           |
| 25      | 532 14 61-47 | Cable Battery 6 Ga. 44" red w/16 wire |
| 26      | 532 17 51-58 | Fuse 20 AMP                           |
| 27      | 873 51 04-00 | Nut Keps Hex 1/4-20 unc               |
| 28      | 532 12 47-73 | Cable Ground 6 Ga. 12" black          |
| 29      | 532 19 27-49 | Switch Seat                           |
| 30      | 532 19 33-50 | Switch Ign                            |
| 33      | 532 14 04-01 | Key Ign Molded Generic                |
| 34      | 532 11 07-12 | Switch Light                          |
| 40      | 532 19 74-28 | Harness Ign.                          |
| 41      | 871 11 04-08 | Bolt Blk Fin Hex 1/4 - 20 x 1/2       |
| 42      | 532 13 15-63 | Cover Terminal Red                    |
| 43      | 532 19 25-07 | Solenoid                              |
| 48      | 532 14 08-44 | Adapter Ammeter Rectangular           |
| 52      | 532 14 19-40 | Protection Wire Loop                  |
| 90      | 532 18 04-49 | Cover Terminal Battery                |
| 92      | 532 19 06-15 | Harness Pigtail                       |
| 93      | 532 19 25-40 | Screw Plastite 10-14 x 2.0            |
| 94      | 532 19 18-34 | Module Reverse                        |

**NOTE:** All component dimensions given in U.S. inches.  
1 inch = 25.4 mm.

# REPAIR PARTS

TRACTOR - MODEL NO. LTH1797 (96011022100), PRODUCT NO. 960 11 02-21  
CHASSIS AND ENCLOSURES



# REPAIR PARTS

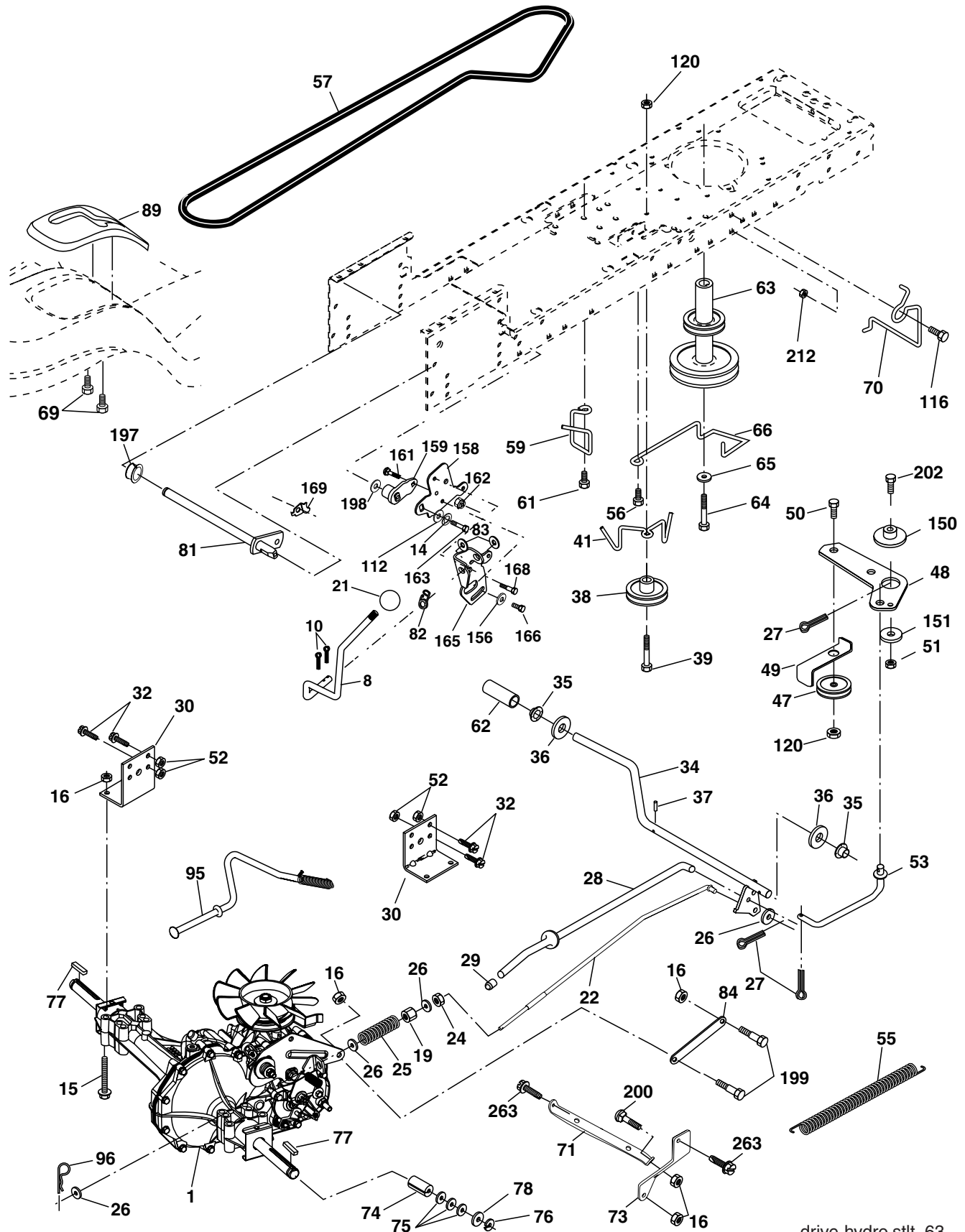
## TRACTOR - MODEL NO. LTH1797 (96011022100), PRODUCT NO. 960 11 02-21 CHASSIS AND ENCLOSURES

| KEY NO. | PART NO.     | DESCRIPTION                        |
|---------|--------------|------------------------------------|
| 1       | 532 17 46-19 | Chassis Stamping                   |
| 2       | 532 17 65-54 | Drawbar                            |
| 5       | 532 15 52-72 | Bumper Hood/Dash                   |
| 9       | 532 19 39-37 | Dash P/L                           |
| 10      | 872 14 06-08 | Bolt Carriage 3/8-16 x 1           |
| 11      | 532 17 49-96 | Panel Dash Lh                      |
| 13      | 532 18 17-19 | Panel Dash Rh                      |
| 14      | 817 49 06-08 | Screw thdrol 3/8-16 x 1/2          |
| 17      | 532 18 88-93 | Hood                               |
| 18      | 532 18 49-21 | Bumper Hood                        |
| 26      | 873 80 06-00 | Nut Lock Hex W/Ins 3/8-16 unc      |
| 28      | 532 18 35-38 | Grille/Len Asm                     |
| 30      | 532 19 39-38 | Fender Footrest STLT Pnt           |
| 31      | 532 13 99-76 | Bracket Support Fender             |
| 37      | 817 49 05-08 | Screw Thdrol 6/16-18 x 1/2 TYT     |
| 38      | 532 17 57-10 | Bracket, Asm. Pivot, Mower Rear    |
| 39      | 532 17 47-14 | Bracket Pivot Laser                |
| 58      | 532 18 71-54 | Duct Air                           |
| 60      | 872 14 06-06 | Bolt Rdhd Sqnk 3/8-16 unc x 3/4    |
| 64      | 532 15 47-98 | Dash Lower STLT                    |
| 74      | 873 68 06-00 | Nut Crownlock 3/8-16 unc           |
| 142     | 532 17 57-02 | Plate Reinforcement STLT           |
| 143     | 532 18 66-89 | Bracket Swaybar Chassis            |
| 144     | 532 17 55-82 | Bracket Pnt Footrest STLT          |
| 145     | 532 15 65-24 | Rod Pivot Chassis/Hood             |
| 206     | 532 17 01-65 | Bolt Shoulder 5/16-18 TT           |
| 207     | 817 67 05-08 | Screw Thdrol 5/16-18 x 1/2         |
| 208     | 817 67 06-08 | Screw Thdrol 3/8-16 x 1/2          |
| 209     | 817 00 06-12 | Screw Hex Wsh Thdrol 3/8-16- x 3/4 |
| 212     | 532 18 35-48 | Insert Lens Reflect                |
| 258     | 532 18 52-14 | Lens LH                            |
| 259     | 532 18 52-13 | Lens RH                            |
| 260     | 532 18 52-16 | Cover Lens                         |
| 261     | 532 18 52-12 | Insert Grille                      |
| 272     | 532 18 88-95 | Vent Hood RH                       |
| 273     | 532 18 88-96 | Vent Hood LH                       |
| 278     | 532 19 16-11 | Screw 10 3/4 Single Lead-Hex       |
| --      | 532 00 54-79 | Plug                               |
| --      | 532 18 78-01 | Dome Plug Plastic (choke hole)     |

**NOTE:** All component dimensions given in U.S. inches.  
1 inch = 25.4 mm.

# REPAIR PARTS

TRACTOR - MODEL NO. LTH1797 (96011022100), PRODUCT NO. 960 11 02-21  
DRIVE



# REPAIR PARTS

**TRACTOR - MODEL NO. LTH1797 (96011022100), PRODUCT NO. 960 11 02-21  
DRIVE**

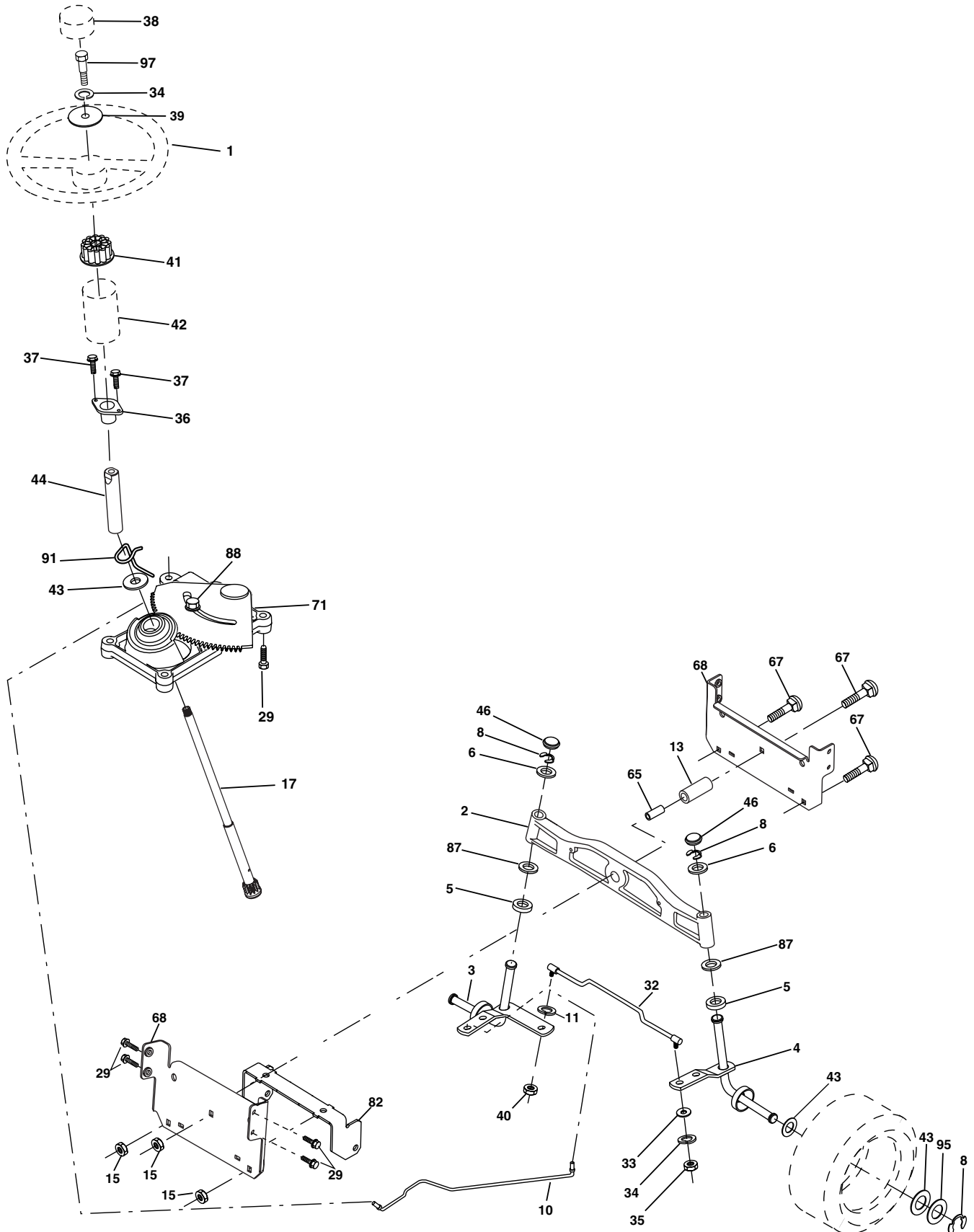
| KEY NO. | PART NO.     | DESCRIPTION  | KEY NO. | PART NO.     | DESCRIPTION                             |
|---------|--------------|--|---------|--------------|---|
| 1       | -----        | Transaxle Hydro Gr 314-0510<br>(Order parts from transaxle manufacturer) | 69      | 532 14 24-32 | Screw                                   |
| 8       | 532 19 25-02 | Rod Shift Fender STLT  | 70      | 532 13 46-83 | Guide Belt Mower Drive RH               |
| 10      | 876 02 04-16 | Pin Cotter 1/8 x 1 CAD   | 71      | 532 16 91-83 | Strap Torque Lh Hydro                   |
| 14      | 810 04 04-00 | Washer Lock Hvy Helical 1/4  | 73      | 532 16 91-82 | Strap Torque Rh Hydro                   |
| 15      | 874 49 05-44 | Bolt Hex Flg Hd 5/16-18 x Gr. 5  | 74      | 532 13 70-57 | Spacer, Axle                            |
| 16      | 873 80 05-00 | Nut Lock Hex W/Ins.<br>5/16-18 unc P                                     | 75      | 532 12 17-49 | Washer 25/32 x 1-1/4 x 16 Ga.           |
| 19      | 873 80 06-00 | Nut Lock Hex W/Wsh 3/8-16 unc  | 76      | 812 00 00-01 | E-Ring                                  |
| 21      | 532 12 12-74 | Knob   | 77      | 532 12 35-83 | Key, Square                             |
| 22      | 532 16 94-98 | Rod, Brake Hydro   | 78      | 532 12 17-48 | Washer 25/32 x 1-5/8 x 16 Ga.           |
| 24      | 873 35 06-00 | Nut  | 81      | 532 16 55-96 | Shaft Asm. Cross Hydro                  |
| 25      | 532 10 68-88 | Spring, Brake Rod  | 82      | 532 16 57-11 | Spring Torsion T/A                      |
| 26      | 819 13 13-16 | Washer   | 83      | 819 17 12-16 | Washer 17/32 x 3/4 x 16 Ga.             |
| 27      | 876 02 04-12 | Pin Cotter 1/8 x 3/4 CAD.  | 84      | 532 16 95-94 | Link Transaxle                          |
| 28      | 532 17 57-65 | Rod, Parking Brake   | 89      | 532 19 48-10 | Console, Shift                          |
| 29      | 532 07 16-73 | Cap, Parking Brake   | 95      | 532 17 02-01 | Control Asm Bypass Hydro                |
| 30      | 532 16 95-92 | Bracket, Transaxle   | 96      | 532 12 47-88 | Retainer Spring 1" Zinc/Cad             |
| 32      | 874 76 05-12 | Bolt Hex Hd 5/16-18 unc x 3/4  | 112     | 819 09 12-10 | Washer 9/32 x 3/4 x 10 Ga.              |
| 34      | 532 17 55-78 | Shaft, Foot Pedal, Nibbed  | 116     | 872 14 06-08 | Bolt Rdhd 3/8-16 x 1                    |
| 35      | 532 12 01-83 | Bearing, Nylon   | 120     | 873 90 06-00 | Nut Lock Flg 3/8-16                     |
| 36      | 819 21 16-16 | Washer   | 150     | 532 17 54-56 | Spacer Retainer                         |
| 37      | 532 12 49-63 | Pin, Roll  | 151     | 819 13 32-10 | Washer 13/32 x 2 x 10 Ga.               |
| 38      | 532 17 91-14 | Pulley, Composite, Flat  | 156     | 532 16 60-02 | Washer Srrtd<br>5/16 ID x 1.0 x .125 Tk |
| 39      | 872 11 06-22 | Bolt Rdhd 3/8-16 unc x 2-3/4 Gr. 5                                       | 158     | 532 16 55-89 | Bracket Shift Mount                     |
| 41      | 532 17 55-56 | Keeper, Belt Idler   | 159     | 532 18 39-00 | Hub Shift                               |
| 47      | 532 12 77-83 | Pulley, Idler, V-Groove  | 161     | 872 14 04-06 | Bolt Rdhd Sqnk 1/4-20 x 3/4 Gr. 5       |
| 48      | 532 15 44-07 | Bellcrank Clutch Grnd Drv Stl  | 162     | 873 68 04-00 | Nut Crownlock 1/4-20 unc                |
| 49      | 532 12 32-05 | Retainer, Belt   | 163     | 874 78 04-16 | Bolt Hex Fin 1/4-20 unc x 1 Gr. 5       |
| 50      | 872 11 06-12 | Bolt 3/8-16 x 1-1/2 Gr. 5  | 165     | 532 16 56-23 | Bracket Pivot Lever                     |
| 51      | 873 68 06-00 | Nut Crownlock 3/8-16   | 166     | 817 49 05-10 | Screw 5/16-18 x 5/8                     |
| 52      | 873 68 05-00 | Nut Crownlock 5/16-18  | 168     | 532 16 54-92 | Bolt Shoulder 5/16-18 x .561 TT         |
| 53      | 532 19 96-52 | Link, Clutch   | 169     | 532 16 55-80 | Plate Fastening Cross Shf. STLT/<br>CRD |
| 55      | 532 10 57-09 | Spring, Return, Clutch   | 197     | 532 16 96-13 | Nyliner Snap-In 5/8" ID                 |
| 56      | 817 06 06-20 | Screw 3/8-16 x 1   | 198     | 532 16 95-93 | Washer Nyl 7/8 ID x .105 HYD<br>CRD     |
| 57      | 532 14 02-94 | V-Belt, Ground Drive   | 199     | 532 16 96-12 | Bolt Shoulder 5/16-18 unc               |
| 59      | 532 16 96-91 | Keeper, Center Span  | 200     | 872 14 05-08 | Bolt Rdhd Sqnk 5/16-18 unc x 1          |
| 61      | 817 12 06-14 | Screw 3/8-16 x 3/4   | 202     | 872 11 06-14 | Bolt Carr 3/8-16 x 1-3/4 Gr. 5          |
| 62      | 532 12 48-72 | Cover, Pedal   | 212     | 532 14 52-12 | Nut Hex Flange Lock                     |
| 63      | 532 17 54-10 | Pulley, Eng  |         |              |   |
| 64      | 532 17 39-37 | Bolt Hex 7/16-20 x 4 Ga. 5   |         |              |   |
| 65      | 810 04 07-00 | Washer   |         |              |   |
| 66      | 532 15 47-78 | Keeper Belt Engine   |         |              |   |

**NOTE:** All component dimensions given in U.S. inches.  
1 inch = 25.4 mm.



# REPAIR PARTS

TRACTOR - MODEL NO. LTH1797 (96011022100), PRODUCT NO. 960 11 02-21  
STEERING ASSEMBLY



# REPAIR PARTS

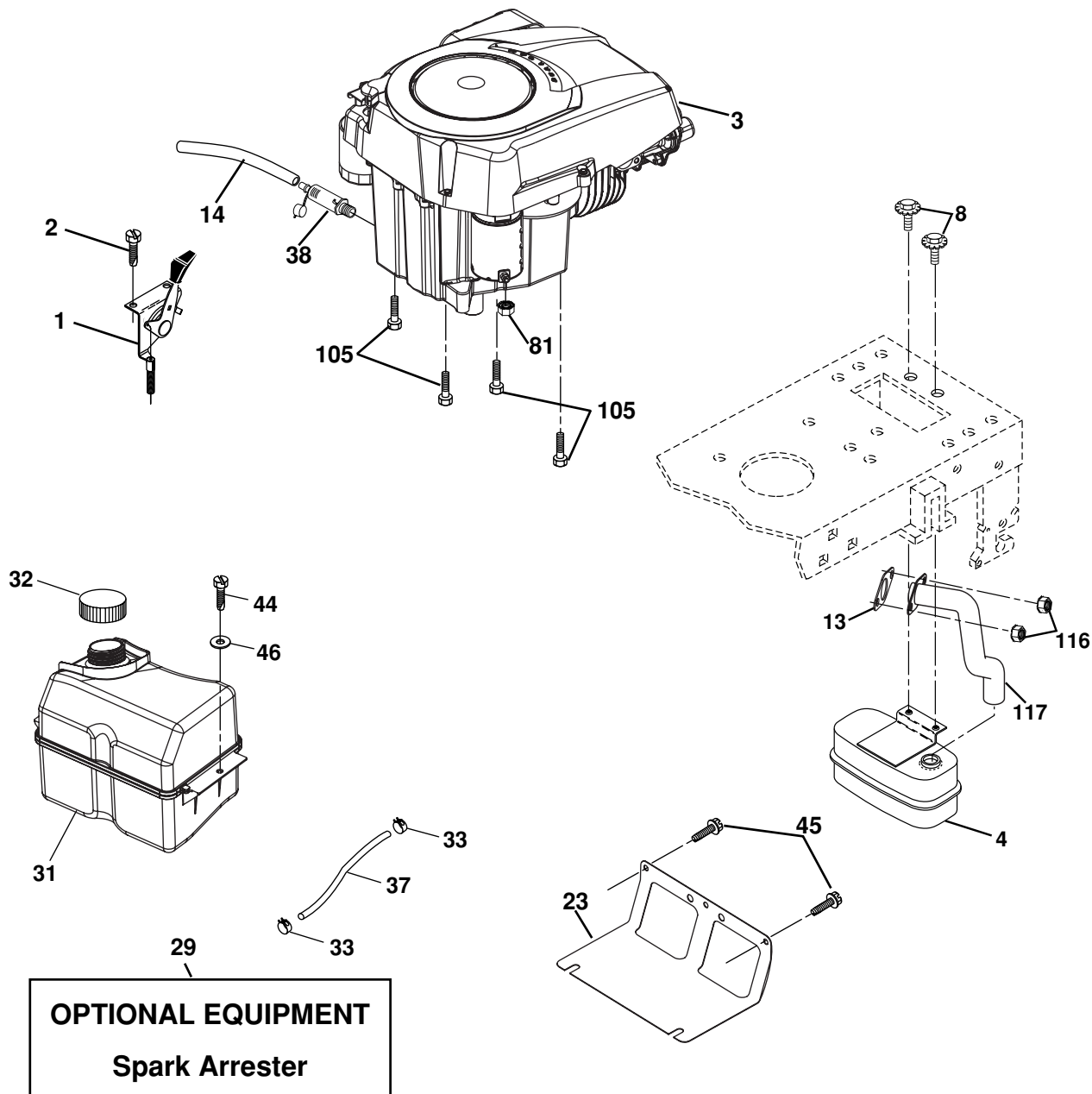
TRACTOR - MODEL NO. LTH1797 (96011022100), PRODUCT NO. 960 11 02-21  
STEERING ASSEMBLY

| KEY NO. | PART NO.     | DESCRIPTION                         |
|---------|--------------|-------------------------------------|
| 1       | 532 19 36-51 | Wheel Steering                      |
| 2       | 532 18 47-06 | Axle Asm                            |
| 3       | 532 16 98-40 | Spindle Asm LH                      |
| 4       | 532 16 98-39 | Spindle Asm RH                      |
| 5       | 532 12 49-31 | Bearing Race Thrust Harden          |
| 6       | 532 12 17-48 | Washer 25/32 x 1-5/8 x 16 Ga.       |
| 8       | 812 00 00-29 | Ring Klip #t5304-75                 |
| 9       | 532 12 49-37 | Bearing Col Strg Blk                |
| 10      | 532 17 51-21 | Link Drag                           |
| 11      | 810 04 06-00 | Washer Lock Hvy Hlcl Spr 3/8        |
| 13      | 532 13 65-18 | Spacer Brg Axle Front               |
| 15      | 532 14 52-12 | Nut Hex Flange Lock                 |
| 17      | 532 19 07-53 | Shaft Asm Strg                      |
| 29      | 817 00 06-12 | Screw 3/8-16 x 3/4                  |
| 32      | 532 17 18-88 | Rod Tie                             |
| 33      | 819 11 12-16 | Washer 11/32 x 3/4 x 16 Ga.         |
| 34      | 810 04 05-00 | Washer Lock 5/16                    |
| 35      | 873 54 05-00 | Crownlock Nut 5/16-24 unf           |
| 36      | 532 15 50-99 | Bushing Strg                        |
| 37      | 532 15 29-27 | Screw                               |
| 38      | 532 19 36-52 | Insert Cap Strg Wh                  |
| 39      | 819 11 38-12 | Washer 11/32 ID x 2-3/8 OD x 12 Ga. |
| 40      | 873 54 06-00 | Nut Crownlock 3/8-24                |
| 41      | 532 18 67-37 | Adaptor Wheel Strg                  |
| 42      | 532 16 96-34 | Boot Steering Shaft                 |
| 43      | 532 12 17-49 | Washer 25/32 x 1 1/4 x 16 Ga.       |
| 44      | 532 19 07-52 | Extension Steering Shaft LR/LT      |
| 46      | 532 12 12-32 | Cap Spindle Fr Top Blk              |
| 47      | 532 18 32-26 | Fitting Grease                      |
| 65      | 532 16 03-67 | Spacer Brace Axle                   |
| 67      | 872 11 06-18 | Bolt, Rdhd Sqnk 3/8-16 x 2-1/4      |
| 68      | 532 16 98-27 | Axle, Brace                         |
| 71      | 532 17 51-46 | Steering Asm.                       |
| 82      | 532 19 99-78 | Bracket Susp Chassis Front          |
| 87      | 532 17 39-66 | Washer Flat .781 x 1-1/2 x 14       |
| 88      | 532 17 51-18 | Bolt Shoulder 7/16-20               |
| 91      | 532 17 55-53 | Clip Steering                       |
| 95      | 532 18 89-67 | Washer Hardened                     |
| 97      | 874 78 05-64 | Bolt 5/16-18 unc x 4" L Gr. 5       |

**NOTE:** All component dimensions given in U.S. inches.  
1 inch = 25.4 mm.

# REPAIR PARTS

TRACTOR - MODEL NO. LTH1797 (96011022100), PRODUCT NO. 960 11 02-21  
ENGINE



engine-kohler\_42

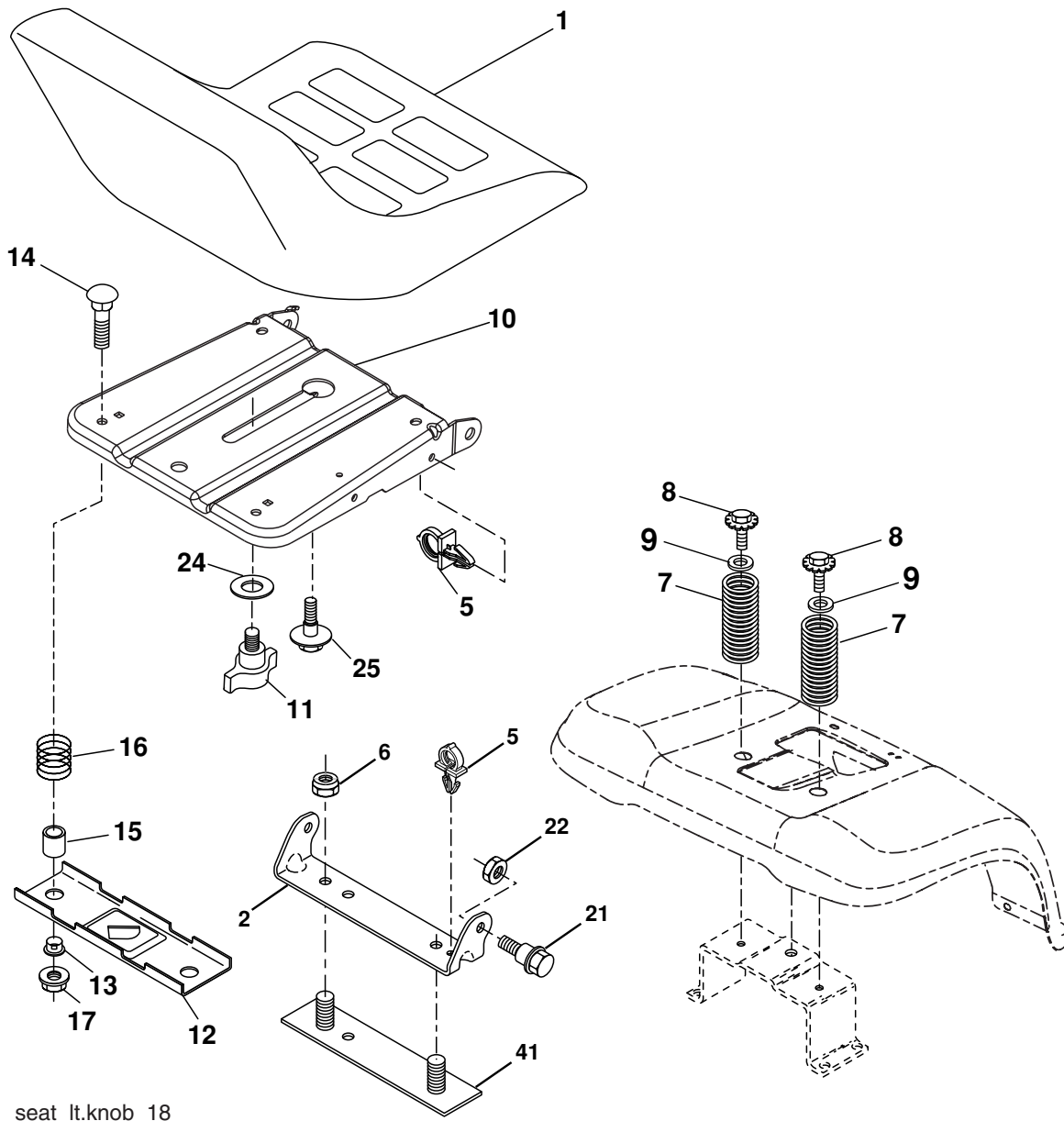
| KEY NO. | PART NO.     | DESCRIPTION   |
|---------|--------------|---|
| 1       | 532 17 08-05 | Control Th/ch Flag  |
| 2       | 817 72 04-08 | Screw Hex Thd Cut 1/4-20 x 5/8 T                                      |
| 3       | -----        | Engine Kohler Model # SV530<br>(Order Parts From Engine Manufacturer) |
| 4       | 532 18 86-55 | Muffler   |
| 8       | 532 17 18-77 | Bolt 5/16-18 x 3/4  |
| 13      | 532 18 59-09 | Gasket Engine   |
| 14      | 532 14 84-56 | Tube Drain Oil Easy   |
| 23      | 532 16 98-37 | Shield Brn/Dbr Guard  |
| 29      | 532 13 71-80 | Kit Spark Arrestor (Flat Scrn)  |
| 31      | 532 18 55-34 | Tank Fuel Front   |
| 32      | 532 19 77-25 | Cap Asm Fuel  |
| 33      | 532 12 34-87 | Clamp Hose Black  |

| KEY NO. | PART NO.     | DESCRIPTION                       |
|---------|--------------|-----------------------------------|
| 37      | 532 13 70-40 | Line Fuel 20"                     |
| 38      | 532 18 16-54 | Plug Drain Oil Easy               |
| 40      | 532 12 40-28 | Bushing Snap Nyl Blk Fuel Line    |
| 44      | 817 67 04-12 | Screw Hexwsh Thdrol 1/4-20 x 3/4  |
| 45      | 817 00 06-12 | Screw Hex Wsh Thdrol 3/8-16 x 3/4 |
| 46      | 819 09 14-16 | Washer 9/32 x 7/8 X 16 Ga         |
| 81      | 873 51 04-00 | Nut 1/4-20                        |
| 105     | 817 12 06-16 | Screw 3/8-16 x 1                  |
| 116     | 532 18 43-62 | Nut Hex Flange Toplock M8-1.25    |
| 117     | 532 18 86-54 | Tube Exhaust                      |

**NOTE:** All component dimensions given in U.S. inches.  
1 inch = 25.4 mm.

# REPAIR PARTS

TRACTOR - MODEL NO. LTH1797 (96011022100), PRODUCT NO. 960 11 02-21  
SEAT ASSEMBLY



seat\_lt.knob\_18

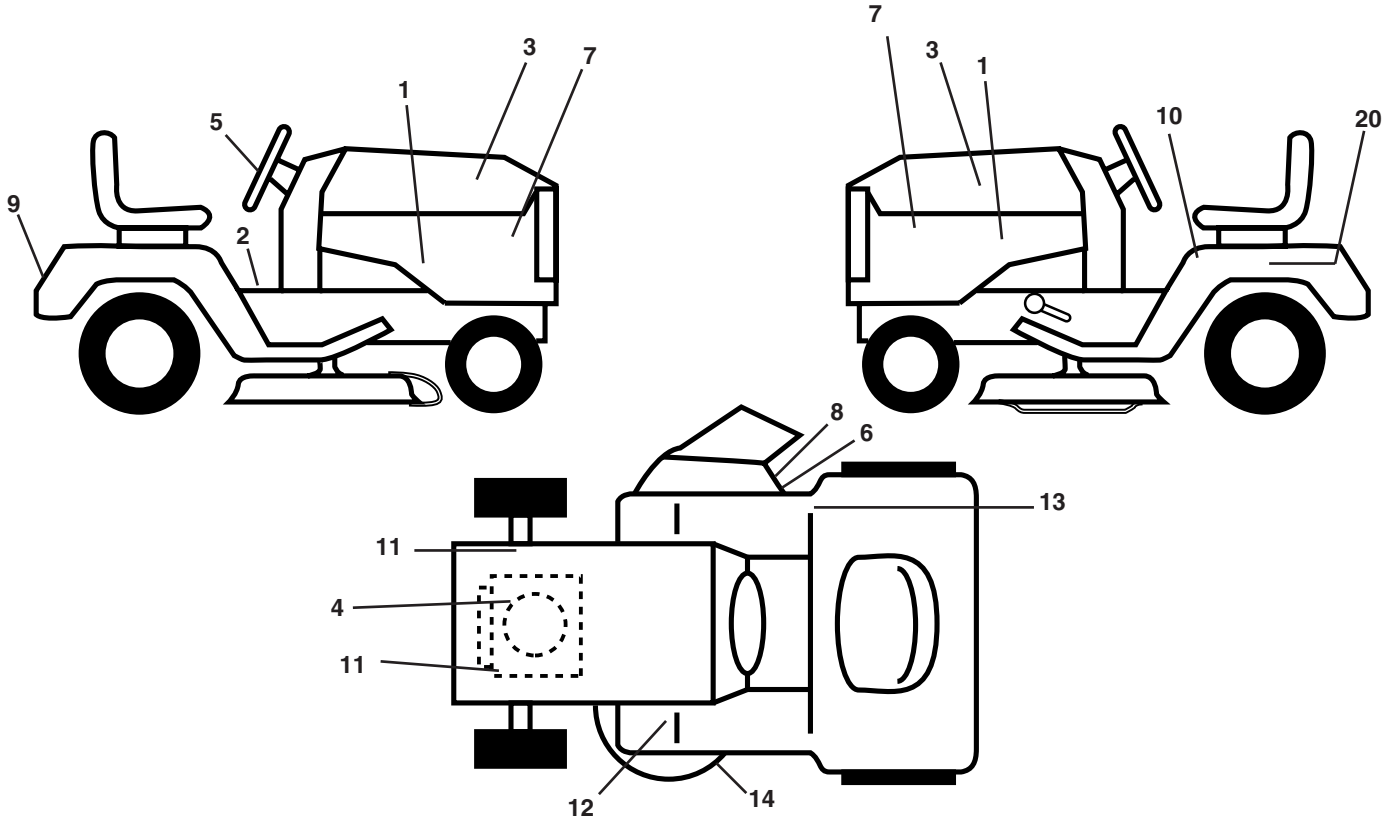
| KEY NO. | PART NO.     | DESCRIPTION                    |
|---------|--------------|--------------------------------|
| 1       | 532 19 01-20 | Seat                           |
| 2       | 532 14 05-51 | Bracket Pivot Seat 8 720       |
| 5       | 532 14 50-06 | Clip Push-In                   |
| 6       | 873 80 06-00 | Nut Hex w/Ins. 3/8-16 unc      |
| 7       | 532 12 41-81 | Spring Seat Cprsn 2 250 Blk Zi |
| 8       | 817 00 06-16 | Screw 3/8-16 x 1-1/2           |
| 9       | 819 13 16-14 | Washer 13/32 x 1 x 14 Ga.      |
| 10      | 532 19 55-30 | Pan Seat                       |
| 11      | 532 16 63-69 | Knob Seat                      |
| 12      | 532 17-46-48 | Bracket Mounting Switch        |
| 13      | 532 12 12-48 | Bushing Snap Blk Nyl 50 Id     |
| 14      | 872 05 04-12 | Bolt Rdhd Sqnk 1/4-20 x 1-1/2  |

| KEY NO. | PART NO.     | DESCRIPTION                     |
|---------|--------------|---------------------------------|
| 15      | 532 13 43-00 | Spacer Split 28 x 96 Yel Zinc   |
| 16      | 532 12 12-50 | Spring Cprsn 1 27 Blk Pnt       |
| 17      | 532 12 39-76 | Nut Lock 1/4 Lge Flg Gr. 5 Zinc |
| 21      | 532 17 18-52 | Bolt Shoulder 5/16-18 unc       |
| 22      | 873 80 05-00 | Nut Hex Lock W/Ins 5/16-18      |
| 24      | 819 17 19-12 | Washer 17/32 x 1-3/16 x 12 Ga.  |
| 25      | 532 12 70-18 | Bolt Shoulder 5/16-18 x 62      |
| 41      | 532 14 06-75 | Strap Asm. Fender               |

**NOTE:** All component dimensions given in U.S. inches.  
1 inch = 25.4 mm.

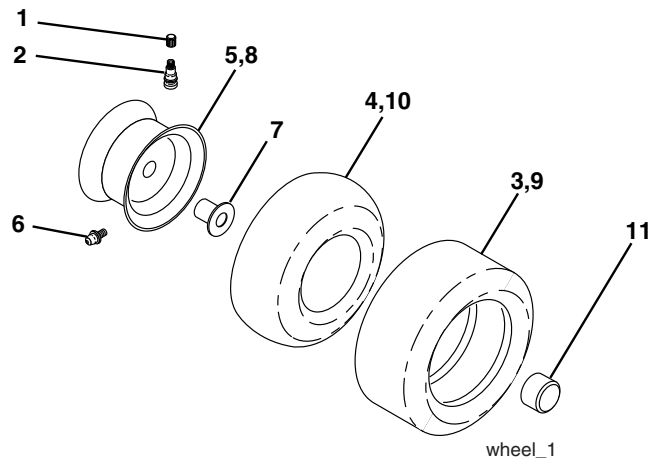
# REPAIR PARTS

TRACTOR - MODEL NO. LTH1797 (96011022100), PRODUCT NO. 960 11 02-21  
DECALS



| KEY NO. | PART NO.     | DESCRIPTION                      | KEY NO. | PART NO.     | DESCRIPTION                      |
|---------|--------------|----------------------------------|---------|--------------|----------------------------------|
| 1       | 532 40 35-75 | Decal, Side Panel                | 11      | 532 15 97-36 | Decal, Chassis Hot Muffler       |
| 2       | 532 14 08-37 | Decal, Saddle Brake Parking      | 12      | 532 15 97-37 | Decal, Brake/ Clutch Symbol Lt   |
| 3       | 532 18 89-23 | Decal, Hood                      | 13      | 532 16 88-69 | Decal, Fender 100 Tick Mark      |
| 4       | 532 19 68-41 | Decal, Warning Engine Symbols    | 14      | 532 19 43-02 | Decal, V-Belt Schematic          |
| 5       | 532 18 89-25 | Decal, Steering                  | 20      | 532 14 50-05 | Decal, Bat Dan/Psn               |
| 6       | 532 19 63-57 | Decal, Deflector Warning         | --      | 532 16 25-98 | Decal, Drawbar                   |
| 7       | 532 18 89-21 | Decal, Pnl Side                  | --      | 532 13 83-11 | Decal, Handle Lift Height Adjust |
| 8       | 532 18 21-66 | Decal, Mower Cutfinger           | --      | 532 16 69-60 | Decal, Bypass                    |
| 9       | 532 40 35-76 | Decal, Fender                    | --      | 532 18 82-52 | Pad Footrest LH STLT             |
| 10      | 532 40 03-89 | Decal, Read Owner's Manual Syms. | --      | 532 18 82-53 | Pad Footrest RH STLT             |
|         |              |                                  | --      | 532 40 35-65 | Manual, Owner's                  |

## WHEELS & TIRES

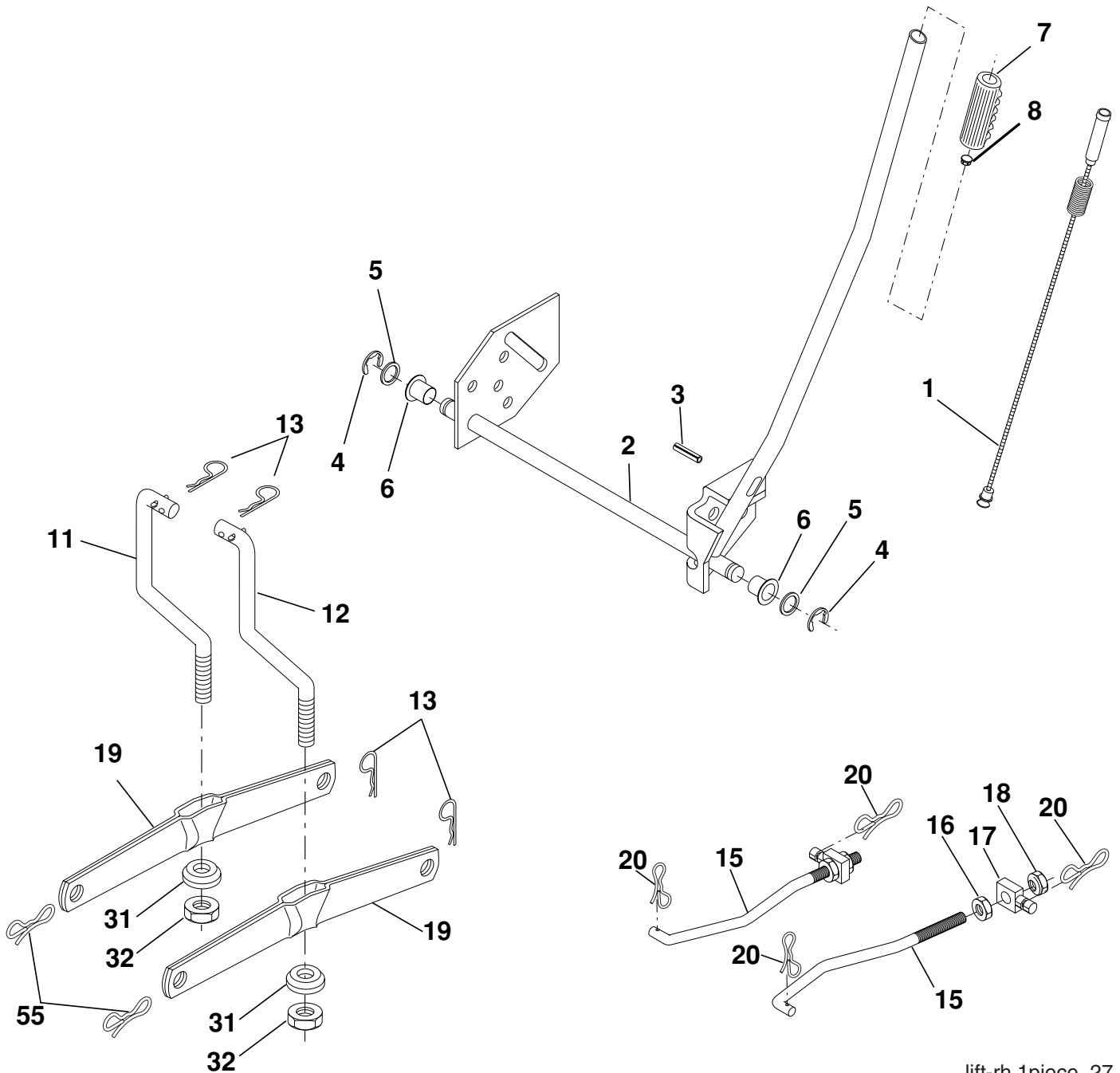


| KEY NO. | PART NO.     | DESCRIPTION                       |
|---------|--------------|-----------------------------------|
| 1       | 532 05 91-92 | Cap Valve Tire                    |
| 2       | 532 06 51-39 | Stem Valve                        |
| 3       | 532 10 62-22 | Tire F Ts 15 x 6 0 - 6 Service    |
| 4       | 532 05 99-04 | Tube Front (Service Item Only)    |
| 5       | 532 13 83-36 | Rim Asm 6" front Service          |
| 6       | 532 12 49-57 | Fitting Grease (Front Wheel Only) |
| 7       | 532 12 49-59 | Bearing Flange (Front Wheel Only) |
| 8       | 532 13 83-37 | Rim Asm 8"rear Service            |
| 9       | 532 12 20-82 | Tire R Ts 20 x 10-8 C Service     |
| 10      | 532 12 49-26 | Tube Rear (Service Item Only)     |
| 11      | 532 17 50-39 | Cap Axle Blk 1 50 x 1 00          |
| --      | 532 14 43-34 | Sealant, Tire ( 10 oz. Tube)      |

**NOTE:** All component dimensions given in U.S. inches.  
1 inch = 25.4 mm.

# REPAIR PARTS

TRACTOR - MODEL NO. LTH1797 (96011022100), PRODUCT NO. 960 11 02-21  
MOWER LIFT



lift-rh.1piece\_27

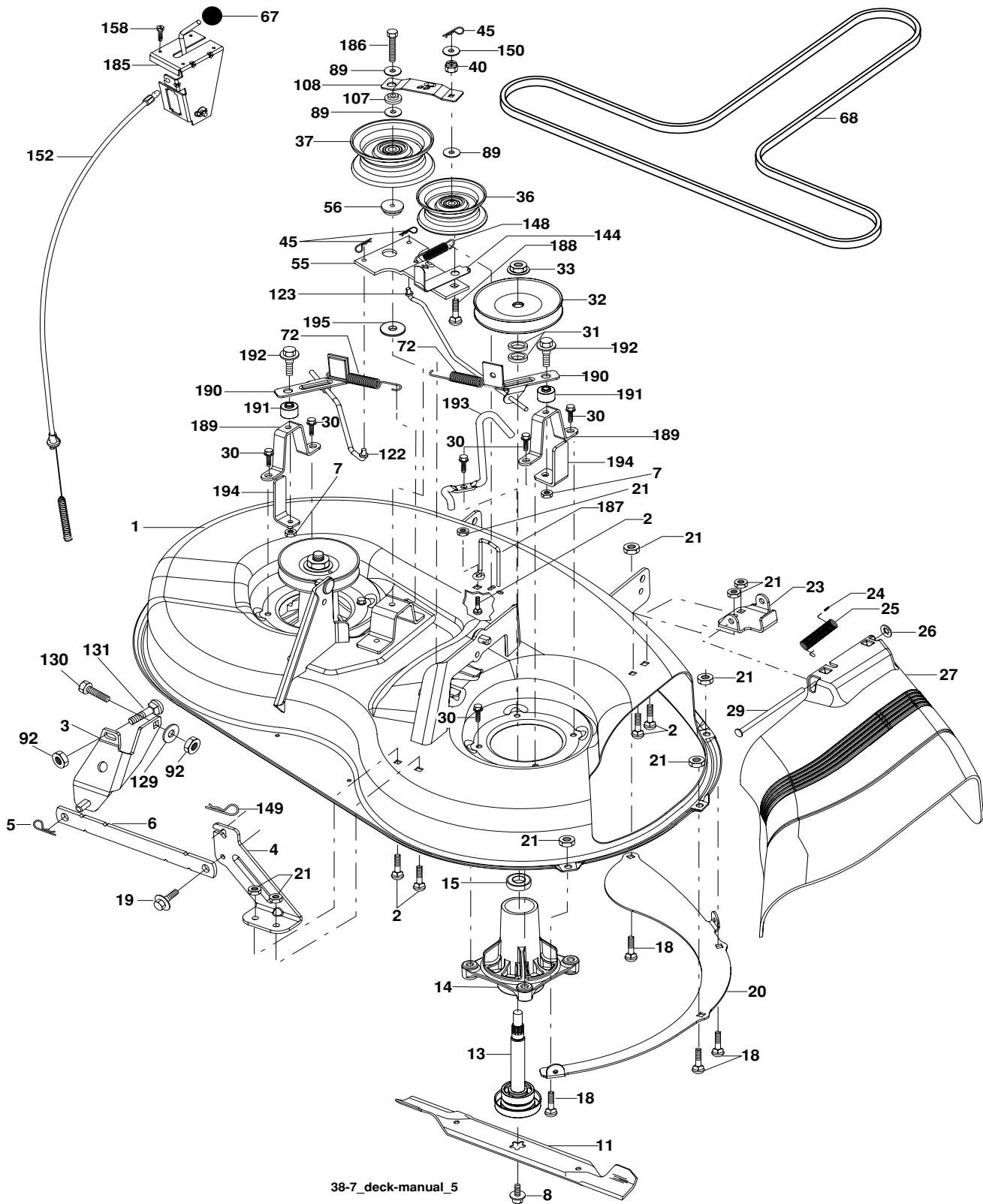
| KEY NO. | PART NO.     | DESCRIPTION                     |
|---------|--------------|---------------------------------|
| 1       | 532 15 94-60 | Wire Asm Inner/Spring W/plunger |
| 2       | 532 15 94-71 | Shaft Asm Lift                  |
| 3       | 532 10 57-67 | Pin Groove                      |
| 4       | 812 00 00-02 | E Ring #5133-62                 |
| 5       | 819 21 16-21 | Washer PLTD 21/32 x 1 x 21Ga.   |
| 6       | 532 12 01-83 | Bearing Nylon Blk 629 Id        |
| 7       | 532 12 56-31 | Grip Handle Bicycle             |
| 8       | 532 12 45-26 | Button Plunger Black            |
| 11      | 532 13 98-65 | Link Lift LH                    |
| 12      | 532 13 98-66 | Link Lift RH                    |
| 13      | 532 12 46-70 | Retainer Spring                 |

| KEY NO. | PART NO.     | DESCRIPTION                  |
|---------|--------------|------------------------------|
| 15      | 532 17 32-88 | Link Front                   |
| 16      | 873 35 08-00 | Nut Jam Hex 1/2-13 unc       |
| 17      | 532 17 56-89 | Trunnion Blk Zinc            |
| 18      | 873 80 08-00 | Nut Lock W/wsh 1/2-13 unc    |
| 19      | 532 13 98-68 | Arm Suspension Rear          |
| 20      | 532 19 42-09 | Pin Cotter 7/16 Bow Tie Lock |
| 31      | 532 16 98-65 | Bearing Pvt. Lift            |
| 32      | 873 54 06-00 | Nut Crownlock 3/8-24         |
| 55      | 532 19 42-08 | Pin Cotter 5/16 Bow Tie Lock |

**NOTE:** All component dimensions given in U.S. inches.  
1 inch = 25.4 mm.

# REPAIR PARTS

TRACTOR - MODEL NO. LTH1797 (96011022100), PRODUCT NO. 960 11 02-21  
MOWER DECK



38-7\_deck-manual\_5

# REPAIR PARTS

**TRACTOR - MODEL NO. LTH1797 (96011022100), PRODUCT NO. 960 11 02-21  
MOWER DECK**

| KEY NO. | PART NO.     | DESCRIPTION                     | KEY NO. | PART NO.     | DESCRIPTION  |
|---------|--------------|---------------------------------|---------|--------------|--|
| 1       | 532 19 25-56 | Mower Housing Assembly          | 89      | 819 13 13-11 | Washer 13/32 x 13/16 x 11 Ga.  |
| 2       | 872 14 05-06 | Bolt Carriage 5/16-18 x 3/4     | 92      | 873 80 06-00 | Nut Lock Hex w/Ins. 3/8-16 unc   |
| 3       | 532 13 80-17 | Bracket Asm Fr. Sway Bar        | 107     | 532 13 35-02 | Spacer Retainer  |
| 4       | 532 19 25-68 | Bracket Deck Sway Bar 38"/42"   | 108     | 532 13 35-03 | Stiffener, Idler Arm   |
| 5       | 532 12 46-70 | Retainer Spring                 | 122     | 532 19 25-75 | Rod, Brake LH  |
| 6       | 532 17 80-24 | Bar Sway Deck                   | 123     | 532 19 25-76 | Rod, Brake RH  |
| 7       | 873 80 05-00 | Nut Lock Hex w/Ins. 5/16-18 unc | 129     | 819 13 13-12 | Washer 13/32 x 13/16 x 12 Ga.  |
| 8       | 532 19 30-03 | Bolt 3/8-24 x 1.25 Gr. 8        | 130     | 874 78 06-16 | Bolt Fin Hex 3/8-16 unc x 1 Gr. 5  |
| 11      | 532 19 39-57 | Blade Mower                     | 131     | 872 14 06-08 | Bolt Rdhd Sqnk 3/8-16 unc x 1  |
| 13      | 532 19 28-72 | Shaft Assembly, Mandrel, Vented | 144     | 532 19 34-14 | Keeper Belt Idler Tension  |
| 14      | 532 18 72-81 | Housing, Mandrel, Vented        | 148     | 532 16 90-22 | Spring Return Idler  |
| 15      | 532 11 04-85 | Bearing, Ball, Mandrel          | 149     | 532 16 58-98 | Retainer Spring Yellow   |
| 18      | 872 14 05-05 | Bolt Rdhd Sqnk 5/16-18 x 5/8    | 150     | 819 09 12-10 | Washer 9/32 x 3/4 x 10 Ga.   |
| 19      | 532 13 28-27 | Bolt, Shoulder                  | 152     | 532 19 32-35 | Clutch Cable 38"/46"   |
| 20      | 532 40 00-95 | Baffle Vortex Front             | 158     | 817 72 04-08 | Screw Hex Thd Cut 1/4-20 x 1/2   |
| 21      | 873 68 05-00 | Nut                             | 185     | 532 18 82-34 | Head Asm Cable Clutch  |
| 23      | 532 19 25-57 | Bracket, Mower Deflector        | 186     | 817 49 06-44 | Screw Hex Wsh Thdrol<br>3/8-16 x 2-3/4   |
| 24      | 532 10 53-04 | Cap, Sleeve                     | 187     | 532 19 34-12 | Keeper Belt  |
| 25      | 532 19 70-26 | Spring, Torsion, Deflector      | 188     | 532 16 58-91 | Bolt Carriage Idler  |
| 26      | 532 11 04-52 | Nut, Push                       | 189     | 532 19 25-59 | Stand, Brake   |
| 27      | 532 40 14-72 | Shield, Deflector               | 190     | 532 19 25-60 | Arm, Brake   |
| 29      | 532 13 14-91 | Rod, Hinge                      | 191     | 532 19 25-61 | Spacer, Brake  |
| 30      | 532 17 39-84 | Screw Thdrol.                   | 192     | 532 19 37-82 | Bolt/Washer Asm 5/16-18  |
| 31      | 532 18 76-90 | Washer, Spacer                  | 193     | 532 19 34-13 | Keeper Belt Rh Mandrel   |
| 32      | 532 15 35-32 | Pulley, Mandrel                 | 194     | 532 19 41-05 | Guard Brake  |
| 33      | 532 40 02-34 | Nut, Toplock                    | --      | 532 19 25-58 | Brake Assembly (Includes Stand,<br>Arm and Guard Components)                                     |
| 36      | 532 13 14-94 | Pulley, Idler, Flat             | --      | 532 19 28-70 | Mandrel Assembly (Includes<br>Housing, Shaft and Shaft Hard-<br>ware Only - Pulley Not Included) |
| 37      | 532 19 31-98 | Pulley Idler Flat               | --      | 532 19 36-46 | Replacement Mower, Complete  |
| 40      | 873 68 06-00 | Nut, Crownlock 3/8-16 unc       |         |              |  |
| 45      | 532 12 47-88 | Retainer                        |         |              |  |
| 46      | 532 13 77-29 | Screw 1/4-20 x 5/8              |         |              |  |
| 55      | 532 13 38-40 | Idler Arm Assembly              |         |              |  |
| 56      | 532 16 57-23 | Spacer, Retainer                |         |              |  |
| 67      | 532 10 69-32 | Knob                            |         |              |  |
| 68      | 532 19 32-14 | V-Belt                          |         |              |  |
| 72      | 532 19 32-16 | Spring Brake Return             |         |              |  |

**NOTE:** All component dimensions given in U.S. inches.  
1 inch = 25.4 mm.