

LTH151

Spare parts

Ersatzteile

Pièces détachées

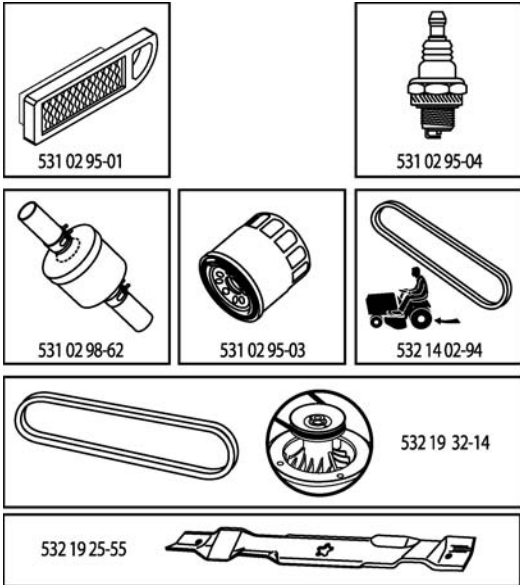
Reserve onderdelen

Repuestos

Reservdelar

ILLUSTRATED PARTS LIST

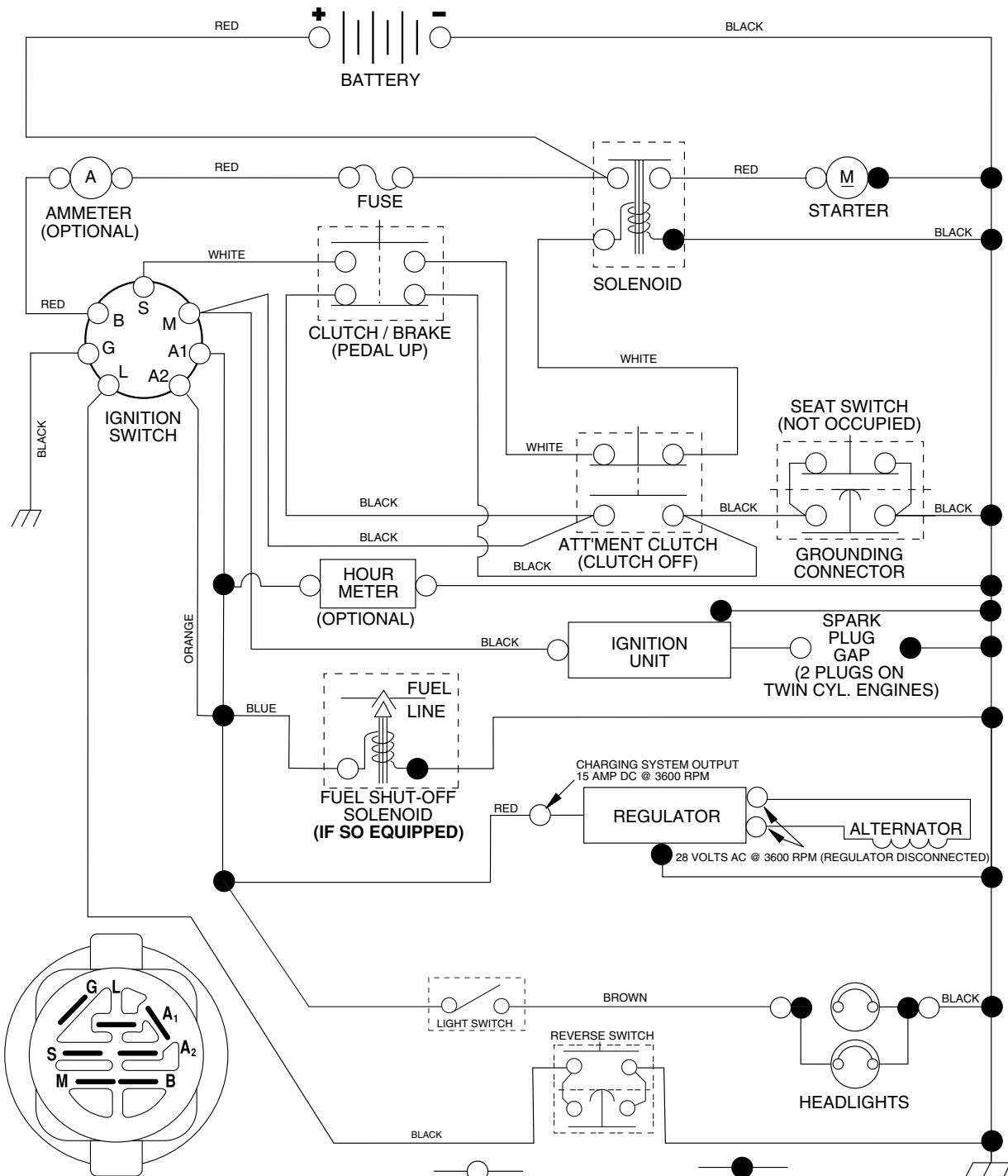
MODEL NO. 96011011200
CUSTOMER CATALOG NO. LTH151
PRODUCT NO. 960 11 01-12



400419

TRACTOR - MODEL NO. LTH151 (96011011200), PRODUCT NO. 960 11 01-12 SCHEMATIC

03054 (197428)



IGNITION SWITCH

| POSITION | CIRCUIT | "MAKE" |
|--------------|------------|--------|
| OFF | M+G+A1 | |
| RUN/OVERRIDE | B+A1 | |
| RUN | B+A1 | L+A2 |
| START | B + S + A1 | |

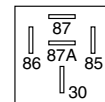
3054

REMOVABLE CONNECTIONS

NON-REMOVABLE CONNECTIONS

WIRING INSULATED CLIPS

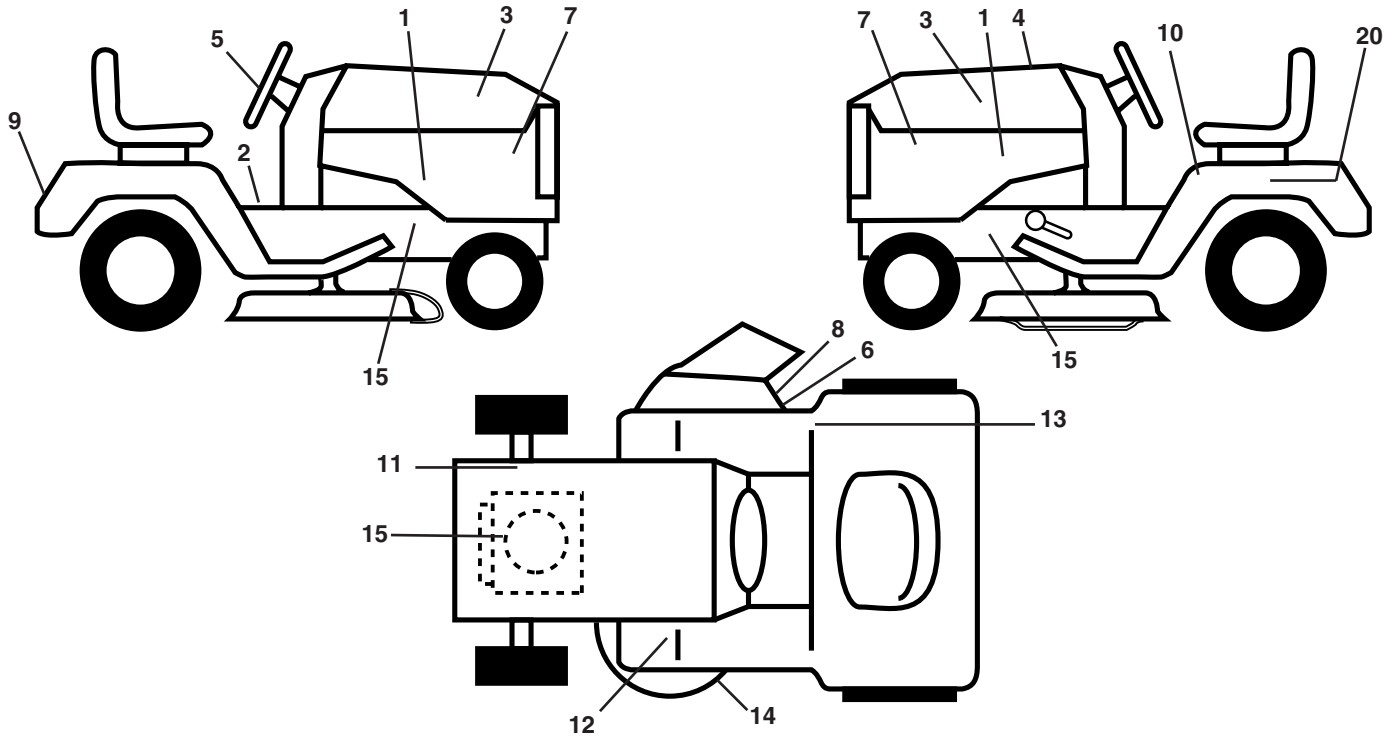
NOTE: IF WIRING INSULATED CLIPS WERE REMOVED FOR SERVICING OF UNIT, THEY SHOULD BE REPLACED TO PROPERLY SECURE YOUR WIRING.



RELAY

REPAIR PARTS

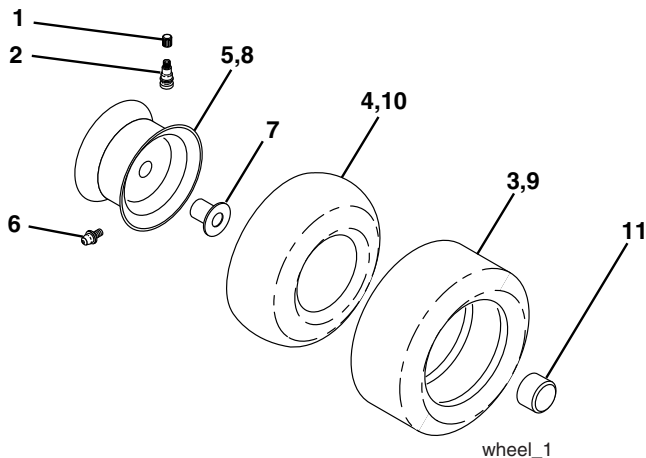
TRACTOR - MODEL NO. LTH151 (96011011200), PRODUCT NO. 960 11 01-12
DECALS



| KEY NO. | PART NO. | DESCRIPTION |
|---------|--------------|-------------------------------|
| 1 | 532 19 11-50 | Decal Side Panel |
| 2 | 532 14 08-37 | Decal Saddle Brake Parking |
| 3 | 532 18 89-23 | Decal Hood |
| 4 | 532 40 04-19 | Decal Replacement |
| 5 | 532 18 89-25 | Decal Steering |
| 6 | 532 19 63-57 | Decal Deflector Warning |
| 7 | 532 18 89-21 | Decal Pnl Side |
| 8 | 532 18 21-66 | Decal Mower Cutfingr |
| 9 | 532 18 89-31 | Decal Fender |
| 10 | 532 40 03-89 | Decal Read Owner's Man. Syms |
| 11 | 532 15 97-36 | Decal Chassis Hot Muffler |
| 12 | 532 15 97-37 | Decal Brake/ Clutch Symbol Lt |
| 13 | 532 18 04-32 | Decal Fender 100 DB/CE |

| KEY NO. | PART NO. | DESCRIPTION |
|---------|--------------|---------------------------------|
| 14 | 532 19 43-02 | Decal V-Belt Schematic |
| 15 | 532 19 68-41 | Decal Warning Eng. Syms |
| 20 | 532 14 50-05 | Decal Bat Dan/Psn |
| -- | 532 18 82-52 | Pad Footrest LH STLT |
| -- | 532 16 25-98 | Decal Drawbar |
| -- | 532 18 82-53 | Pad Footrest RH STLT |
| -- | 532 13 83-11 | Decal Handle Lift Height Adjust |
| -- | 532 16 69-60 | Decal Bypass |
| -- | 532 40 08-60 | Manual Operator's (Euro.) |
| -- | 532 40 14-59 | Manual Operator's (Scand) |
| -- | 532 40 14-60 | Manual Operator's (EBloc) |
| -- | 532 40 14-61 | Manual Operator's (Baltic) |

WHEELS & TIRES

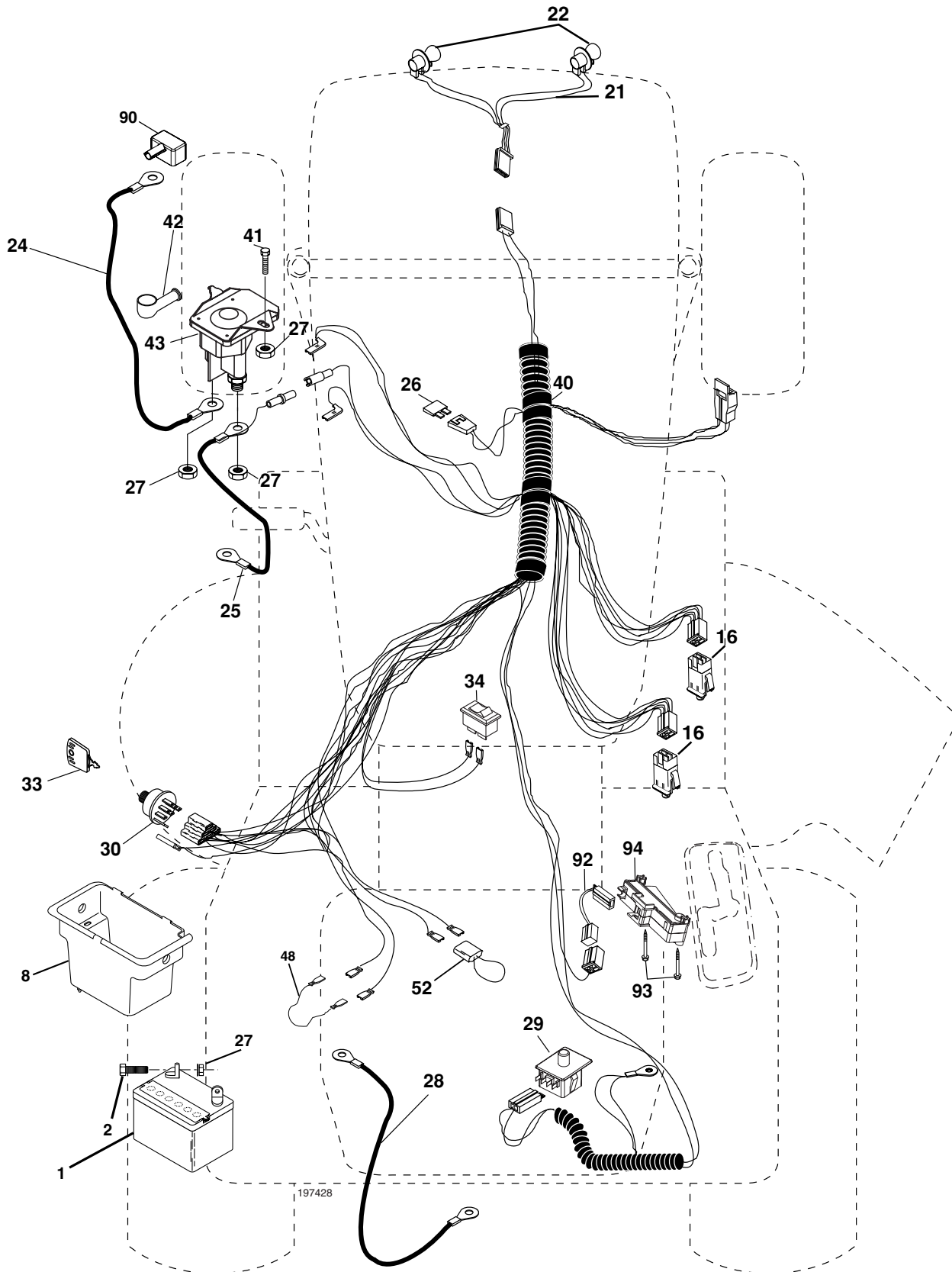


| KEY NO. | PART NO. | DESCRIPTION |
|---------|--------------|-----------------------------------|
| 1 | 532 05 91-92 | Cap Valve Tire |
| 2 | 532 06 51-39 | Stem Valve |
| 3 | 532 10 62-22 | Tire F Ts 15 x 6 0 - 6 Service |
| 4 | 532 05 99-04 | Tube Front (Service Item Only) |
| 5 | 532 13 83-36 | Rim Asm 6" front Service |
| 6 | 532 12 49-57 | Fitting Grease (Front Wheel Only) |
| 7 | 532 12 49-59 | Bearing Flange (Front Wheel Only) |
| 8 | 532 13 83-37 | Rim Asm 8"rear Service |
| 9 | 532 10 62-68 | Tire R Ts 18 x 9 5-8 C Service |
| 10 | 532 12 49-26 | Tube Rear (Service Item Only) |
| 11 | 532 17 50-39 | Cap Axle Blk 1 50 x 1 00 |
| -- | 532 14 43-34 | Sealant, Tire (10 oz. Tube) |

NOTE: All component dimensions given in U.S. inches.
1 inch = 25.4 mm.

REPAIR PARTS

TRACTOR - MODEL NO. LTH151 (96011011200), PRODUCT NO. 960 11 01-12
ELECTRICAL



REPAIR PARTS

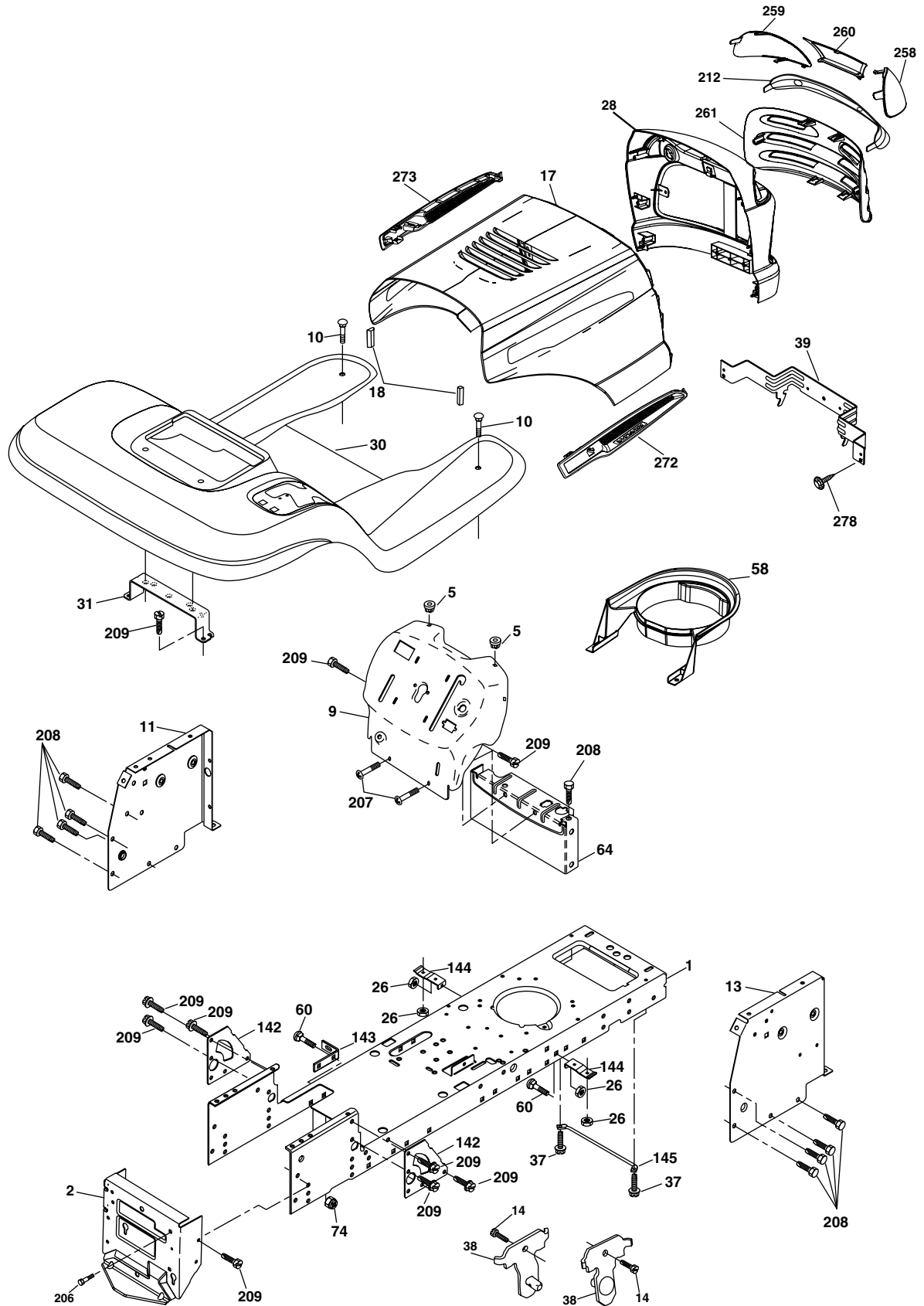
TRACTOR - MODEL NO. LTH151 (96011011200), PRODUCT NO. 960 11 01-12
ELECTRICAL

| KEY NO. | PART NO. | DESCRIPTION |
|---------|--------------|---------------------------------------|
| 1 | 532 14 49-27 | Battery |
| 2 | 874 76 04-12 | Bolt Hex Hd 1/4-20 unc x 3/4 |
| 8 | 532 17 66-89 | Case Battery Mech Hinge |
| 16 | 532 17 61-38 | Switch Interlock |
| 21 | 532 17 56-88 | Harness Asm Light W/4152j |
| 22 | 532 00 41-52 | Bulb Light #1156 |
| 24 | 532 12 47-80 | Cable Battery 6 Ga. 11" red |
| 25 | 532 14 61-47 | Cable Battery 6 Ga. 44" red w/16 wire |
| 26 | 532 17 51-58 | Fuse 20 AMP |
| 27 | 873 51 04-00 | Nut Keps Hex 1/4-20 unc |
| 28 | 532 12 47-73 | Cable Ground 6 Ga. 12" black |
| 29 | 532 19 27-49 | Switch Seat |
| 30 | 532 19 33-50 | Switch Ign |
| 33 | 532 14 04-01 | Key Ign Molded Generic |
| 34 | 532 11 07-12 | Switch Light |
| 40 | 532 19 74-28 | Harness Ign. |
| 41 | 871 11 04-08 | Bolt Blk Fin Hex 1/4 - 20 x 1/2 |
| 42 | 532 13 15-63 | Cover Terminal Red |
| 43 | 532 19 25-07 | Solenoid |
| 48 | 532 14 08-44 | Adapter Ammeter Rectangular |
| 52 | 532 14 19-40 | Protection Wire Loop |
| 90 | 532 18 04-49 | Cover Terminal Battery |
| 92 | 532 19 06-15 | Harness Pigtail |
| 93 | 532 19 25-40 | Screw Plastite 10-14 x 2.0 |
| 94 | 532 19 18-34 | Module Reverse |

NOTE: All component dimensions given in U.S. inches.
1 inch = 25.4 mm.

REPAIR PARTS

TRACTOR - MODEL NO. LTH151 (96011011200), PRODUCT NO. 960 11 01-12
CHASSIS AND ENCLOSURES



REPAIR PARTS

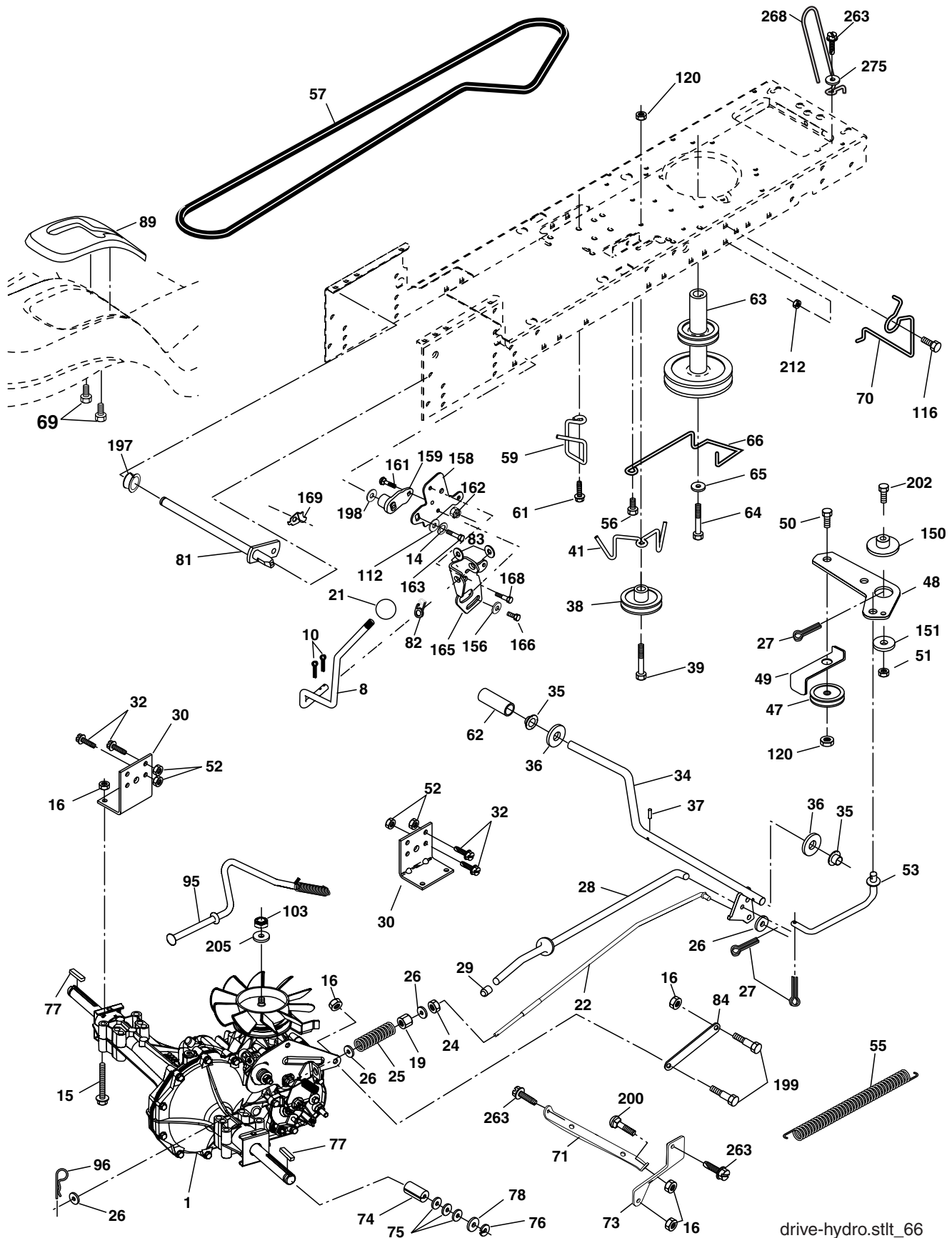
TRACTOR - MODEL NO. LTH151 (96011011200), PRODUCT NO. 960 11 01-12
CHASSIS AND ENCLOSURES

| KEY NO. | PART NO. | DESCRIPTION |
|---------|--------------|------------------------------------|
| 1 | 532 17 46-19 | Chassis Stamping |
| 2 | 532 17 65-54 | Drawbar |
| 5 | 532 15 52-72 | Bumper Hood/Dash |
| 9 | 532 19 39-37 | Dash P/L |
| 10 | 872 14 06-08 | Bolt Carriage 3/8-16 x 1 |
| 11 | 532 17 49-96 | Panel Dash Lh |
| 13 | 532 18 17-19 | Panel Dash Rh |
| 14 | 817 49 06-08 | Screw thdrol 3/8-16 x 1/2 |
| 17 | 532 18 88-93 | Hood |
| 18 | 532 18 49-21 | Bumper Hood |
| 26 | 873 80 06-00 | Nut Lock Hex W/Ins 3/8-16 unc |
| 28 | 532 18 35-38 | Grille/Len Asm |
| 30 | 532 19 39-38 | Fender Footrest STLTL Pnt |
| 31 | 532 13 99-76 | Bracket Support Fender |
| 37 | 817 49 05-08 | Screw Thdrol 6/16-18 x 1/2 TYT |
| 38 | 532 17 57-10 | Bracket, Asm. Pivot, Mower Rear |
| 39 | 532 17 47-14 | Bracket Pivot Laser |
| 58 | 532 18 71-54 | Duct Air |
| 60 | 872 14 06-06 | Bolt Rdhd Sqnk 3/8-16 unc x 3/4 |
| 64 | 532 15 47-98 | Dash Lower STLTL |
| 74 | 873 68 06-00 | Nut Crownlock 3/8-16 unc |
| 142 | 532 17 57-02 | Plate Reinforcement STLTL |
| 143 | 532 18 66-89 | Bracket Swaybar Chassis |
| 144 | 532 17 55-82 | Bracket Pnt Footrest STLTL |
| 145 | 532 15 65-24 | Rod Pivot Chassis/Hood |
| 206 | 532 17 01-65 | Bolt Shoulder 5/16-18 TT |
| 207 | 817 67 05-08 | Screw Thdrol 5/16-18 x 1/2 |
| 208 | 817 67 06-08 | Screw Thdrol 3/8-16 x 1/2 |
| 209 | 817 00 06-12 | Screw Hex Wsh Thdrol 3/8-16- x 3/4 |
| 212 | 532 18 35-48 | Insert Lens Reflect |
| 258 | 532 18 52-14 | Lens LH |
| 259 | 532 18 52-13 | Lens RH |
| 260 | 532 18 52-16 | Cover Lens |
| 261 | 532 18 52-12 | Insert Grille |
| 272 | 532 18 88-95 | Vent Hood RH |
| 273 | 532 18 88-96 | Vent Hood LH |
| 278 | 532 19 16-11 | Screw 10 3/4 Single Lead-Hex |
| -- | 532 00 54-79 | Plug |
| -- | 532 18 78-01 | Dome Plug Plastic (choke hole) |

NOTE: All component dimensions given in U.S. inches.
1 inch = 25.4 mm.

REPAIR PARTS

TRACTOR - MODEL NO. LTH151 (96011011200), PRODUCT NO. 960 11 01-12
DRIVE



REPAIR PARTS

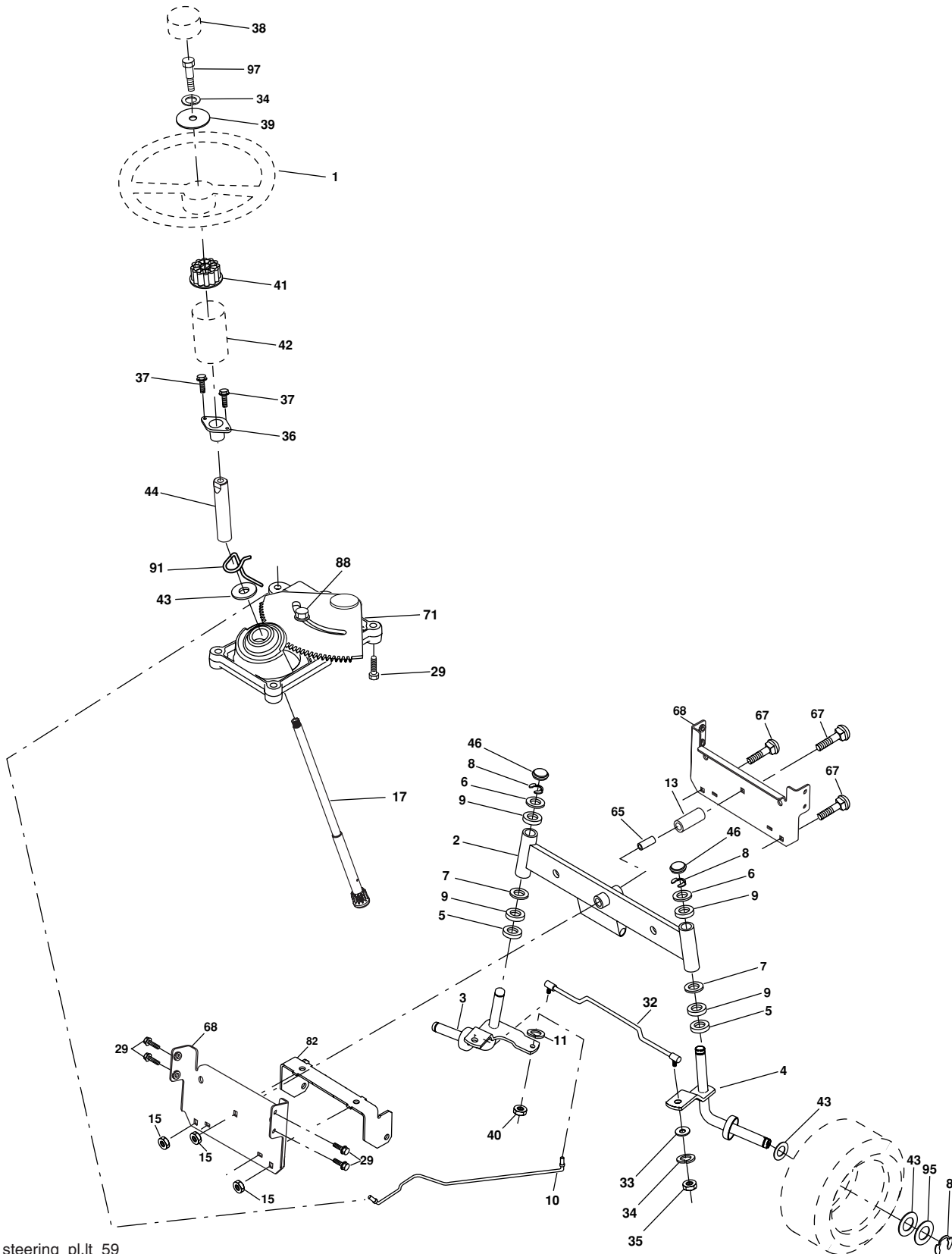
TRACTOR - MODEL NO. LTH151 (96011011200), PRODUCT NO. 960 11 01-12
DRIVE

| KEY NO. | PART NO. | DESCRIPTION | KEY NO. | PART NO. | DESCRIPTION |
|---------|--------------|--|---------|--------------|---|
| 1 | ----- | Transaxle Hydro Gr 322-0510 (Order parts from transaxle manufacturer) | 70 | 532 13 46-83 | Guide Belt Mower Drive RH |
| 8 | 532 19 25-02 | Rod Shift Fender STLT | 71 | 532 16 91-83 | Strap Torque Lh Hydro |
| 10 | 876 02 04-16 | Pin Cotter 1/8 x 1 CAD | 73 | 532 16 91-82 | Strap Torque Rh Hydro |
| 14 | 810 04 04-00 | Washer Lock Hvy Helical 1/4 | 74 | 532 13 70-57 | Spacer, Axle |
| 15 | 874 49 05-44 | Bolt Hex Flg Hd 5/16-18 x Gr. 5 | 75 | 532 12 17-49 | Washer 25/32 x 1-1/4 x 16 Ga. |
| 16 | 873 80 05-00 | Nut Lock Hex W/Ins. 5/16-18 unc P | 76 | 812 00 00-01 | E-Ring |
| 19 | 873 80 06-00 | Nut Lock Hex W/Wsh 3/8-16 unc | 77 | 532 12 35-83 | Key, Square |
| 21 | 532 12 12-74 | Knob | 78 | 532 12 17-48 | Washer 25/32 x 1-5/8 x 16 Ga. |
| 22 | 532 16 94-98 | Rod, Brake Hydro | 81 | 532 16 55-96 | Shaft Asm. Cross Hydro |
| 24 | 873 35 06-00 | Nut | 82 | 532 16 57-11 | Spring Torsion T/A |
| 25 | 532 10 68-88 | Spring, Brake Rod | 83 | 819 17 12-16 | Washer 17/32 x 3/4 x 16 Ga. |
| 26 | 819 13 13-16 | Washer | 84 | 532 16 98-43 | Link Transaxle |
| 27 | 876 02 04-12 | Pin Cotter 1/8 x 3/4 CAD. | 89 | 532 19 48-10 | Console, Shift |
| 28 | 532 17 57-65 | Rod, Parking Brake | 95 | 532 17 02-01 | Control Asm Bypass Hydro |
| 29 | 532 07 16-73 | Cap, Parking Brake | 96 | 532 12 47-88 | Retainer Spring 1" Zinc/Cad |
| 30 | 532 17 49-73 | Bracket, Transaxle | 103 | 873 94 08-00 | Nut Hex Jam Toplock 1/2-20 unf |
| 32 | 874 76 05-12 | Bolt Hex Hd 5/16-18 unc x 3/4 | 112 | 819 09 12-10 | Washer 9/32 x 3/4 x 10 Ga. |
| 34 | 532 17 55-78 | Shaft, Foot Pedal, Nibbed | 116 | 872 14 06-08 | Bolt Rdhd 3/8-16 x 1 |
| 35 | 532 12 01-83 | Bearing, Nylon | 120 | 873 90 06-00 | Nut Lock Flg 3/8-16 |
| 36 | 819 21 16-16 | Washer | 150 | 532 17 54-56 | Spacer Retainer |
| 37 | 532 12 49-63 | Pin, Roll | 151 | 819 13 32-10 | Washer 13/32 x 2 x 10 Ga. |
| 38 | 532 17 91-14 | Pulley, Composite, Flat | 156 | 532 16 60-02 | Washer Srrtd 5/16 ID x 1.0 x .125 |
| 39 | 872 11 06-22 | Bolt Rdhd 3/8-16 unc x 2-3/4 Gr. 5 | 158 | 532 16 55-89 | Bracket Shift Mount |
| 41 | 532 17 55-56 | Keeper, Belt Idler | 159 | 532 18 39-00 | Hub Shift |
| 47 | 532 12 77-83 | Pulley, Idler, V-Groove | 161 | 872 14 04-06 | Bolt Rdhd Sqnk 1/4-20 x 3/4 Gr. 5 |
| 48 | 532 15 44-07 | Bellcrank Clutch Grnd Drv Stl | 162 | 873 68 04-00 | Nut Crownlock 1/4-20 unc |
| 49 | 532 12 32-05 | Retainer, Belt | 163 | 874 78 04-16 | Bolt Hex Fin 1/4-20 unc x 1 Gr. 5 |
| 50 | 872 11 06-12 | Bolt 3/8-16 x 1-1/2 Gr. 5 | 165 | 532 16 56-23 | Bracket Pivot Lever |
| 51 | 873 68 06-00 | Nut Crownlock 3/8-16 | 166 | 817 49 05-10 | Screw 5/16-18 x 5/8 |
| 52 | 873 68 05-00 | Nut Crownlock 5/16-18 | 168 | 532 16 54-92 | Bolt Shoulder 5/16-18 x .561 TT |
| 53 | 532 19 96-52 | Link, Clutch | 169 | 532 16 55-80 | Plate Fastening Cross Shf. STLT/ CRD |
| 55 | 532 10 57-09 | Spring, Return, Clutch | 197 | 532 16 96-13 | Nyliner Snap-In 5/8" ID |
| 56 | 817 06 06-20 | Screw 3/8-16 x 1 | 198 | 532 16 95-93 | Washer Nyl 7/8 ID x .105 HYD |
| 57 | 532 14 02-94 | V-Belt, Ground Drive | 199 | 532 16 96-12 | Bolt Shoulder 5/16-18 unc |
| 59 | 532 16 96-91 | Keeper, Center Span | 200 | 872 14 05-08 | Bolt Rdhd Sqnk 5/16-18 unc x 1 |
| 61 | 817 12 06-14 | Screw 3/8-16 x 3/4 | 202 | 872 11 06-14 | Bolt Carr 3/8-16 x 1-3/4 Gr. 5 |
| 62 | 532 12 48-72 | Cover, Pedal | 205 | 819 17 16-16 | Washer 17/32 x 1 x 16 Ga. |
| 63 | 532 17 54-10 | Pulley, Eng | 212 | 532 14 52-12 | Nut Hex Flange Lock |
| 64 | 532 17 39-37 | Bolt Hex 7/16-20 x 4 Ga. 5 | 263 | 817 00 06-12 | Screw 3/8-16 x 3/4 |
| 65 | 810 04 07-00 | Washer | 268 | 532 18 24-02 | Guard Muffler RH |
| 66 | 532 15 47-78 | Keeper Belt Engine | 275 | 819 13 16-14 | Washer 13/32 x 1 x 14 Ga. |
| 69 | 532 14 24-32 | Screw | | | |

NOTE: All component dimensions given in U.S. inches.
1 inch = 25.4 mm.

REPAIR PARTS

TRACTOR - MODEL NO. LTH151 (96011011200), PRODUCT NO. 960 11 01-12
STEERING ASSEMBLY



REPAIR PARTS

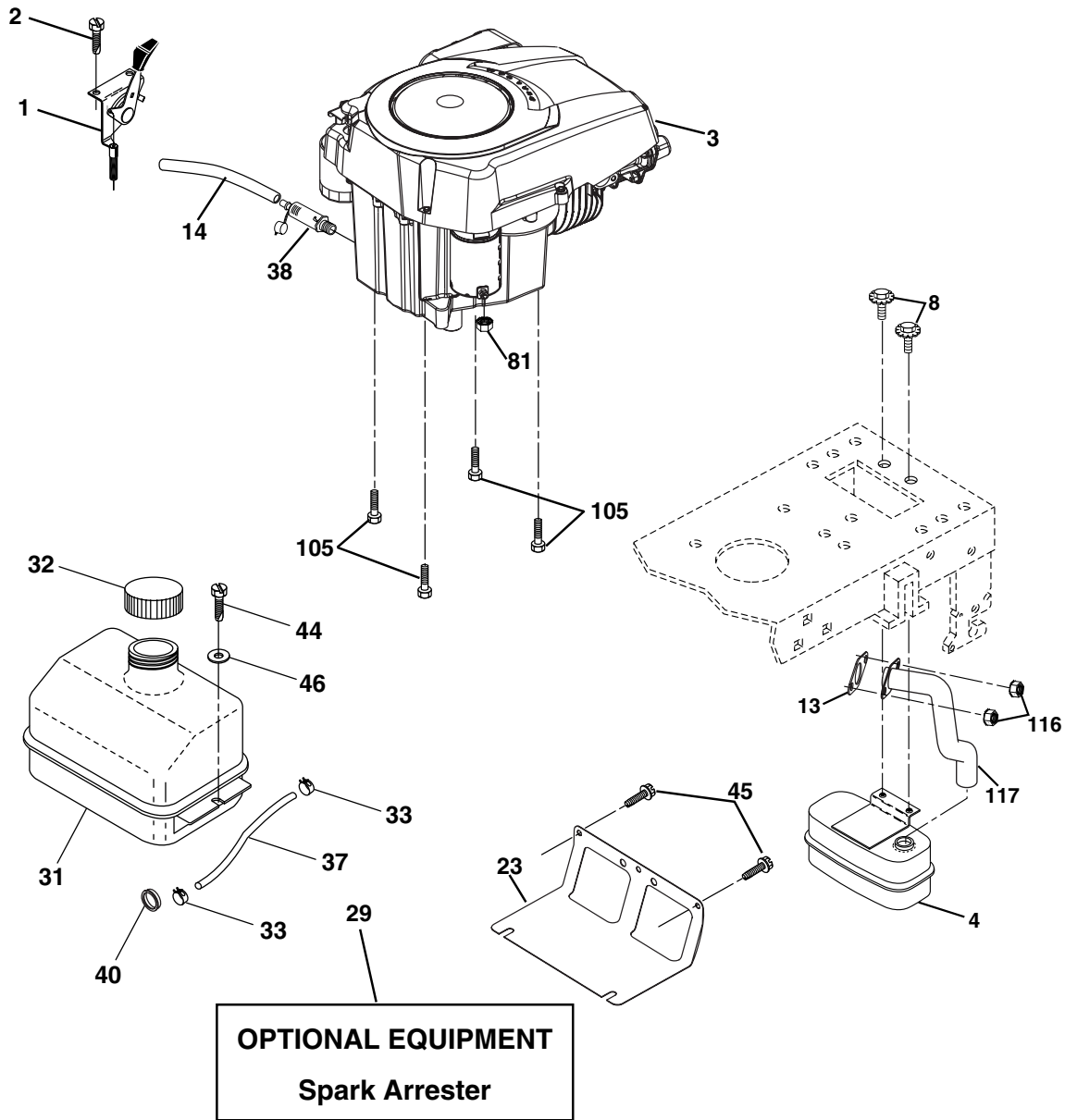
TRACTOR - MODEL NO. LTH151 (96011011200), PRODUCT NO. 960 11 01-12
STEERING ASSEMBLY

| KEY NO. | PART NO. | DESCRIPTION |
|---------|--------------|-------------------------------------|
| 1 | 532 19 36-51 | Wheel Steering |
| 2 | 532 19 56-73 | Axle Asm |
| 3 | 532 16 98-40 | Spindle Asm LH |
| 4 | 532 16 98-39 | Spindle Asm RH |
| 5 | 532 12 49-31 | Bearing Race Thrust Harden |
| 6 | 532 12 17-48 | Washer 25/32 x 1-5/8 x 16 Ga. |
| 7 | 819 27 20-16 | Washer 27/32 x 1-1/4 x 16 Ga. |
| 8 | 812 00 00-29 | Ring Klip #t5304-75 |
| 9 | 532 12 49-37 | Bearing Col Strg Blk |
| 10 | 532 17 51-21 | Link Drag |
| 11 | 810 04 06-00 | Washer Lock Hvy Hlcl Spr 3/8 |
| 13 | 532 13 65-18 | Spacer Brg Axle Front |
| 15 | 532 14 52-12 | Nut Hex Flange Lock |
| 17 | 532 19 07-53 | Shaft Asm Strg |
| 29 | 817 00 06-12 | Screw 3/8-16 x 3/4 |
| 32 | 532 17 18-88 | Rod Tie |
| 33 | 819 11 12-16 | Washer 11/32 x 3/4 x 16 Ga. |
| 34 | 810 04 05-00 | Washer Lock 5/16 |
| 35 | 873 54 05-00 | Crownlock Nut 5/16-24 unf |
| 36 | 532 15 50-99 | Bushing Strg |
| 37 | 532 15 29-27 | Screw |
| 38 | 532 19 36-52 | Insert Cap Strg Wh |
| 39 | 819 11 38-12 | Washer 11/32 ID x 2-3/8 OD x 12 Ga. |
| 40 | 873 54 06-00 | Nut Crownlock 3/8-24 |
| 41 | 532 18 67-37 | Adaptor Wheel Strg |
| 42 | 532 16 96-34 | Boot Steering Shaft |
| 43 | 532 12 17-49 | Washer 25/32 x 1 1/4 x 16 Ga. |
| 44 | 532 19 07-52 | Extension Steering Shaft LR/LT |
| 46 | 532 12 12-32 | Cap Spindle Fr Top Blk |
| 65 | 532 16 03-67 | Spacer Brace Axle |
| 67 | 872 11 06-18 | Bolt, Rdhd Sqnk 3/8-16 x 2-1/4 |
| 68 | 532 16 98-27 | Axle, Brace |
| 71 | 532 17 51-46 | Steering Asm. |
| 82 | 532 19 99-78 | Bracket Susp Chassis Front |
| 88 | 532 17 51-18 | Bolt Shoulder 7/16-20 |
| 91 | 532 17 55-53 | Clip Steering |
| 95 | 532 18 89-67 | Washer Hardened |
| 97 | 874 78 05-64 | Bolt 5/16-18 unc x 4" L Gr. 5 |

NOTE: All component dimensions given in U.S. inches.
1 inch = 25.4 mm.

REPAIR PARTS

TRACTOR - MODEL NO. LTH151 (96011011200), PRODUCT NO. 960 11 01-12
ENGINE



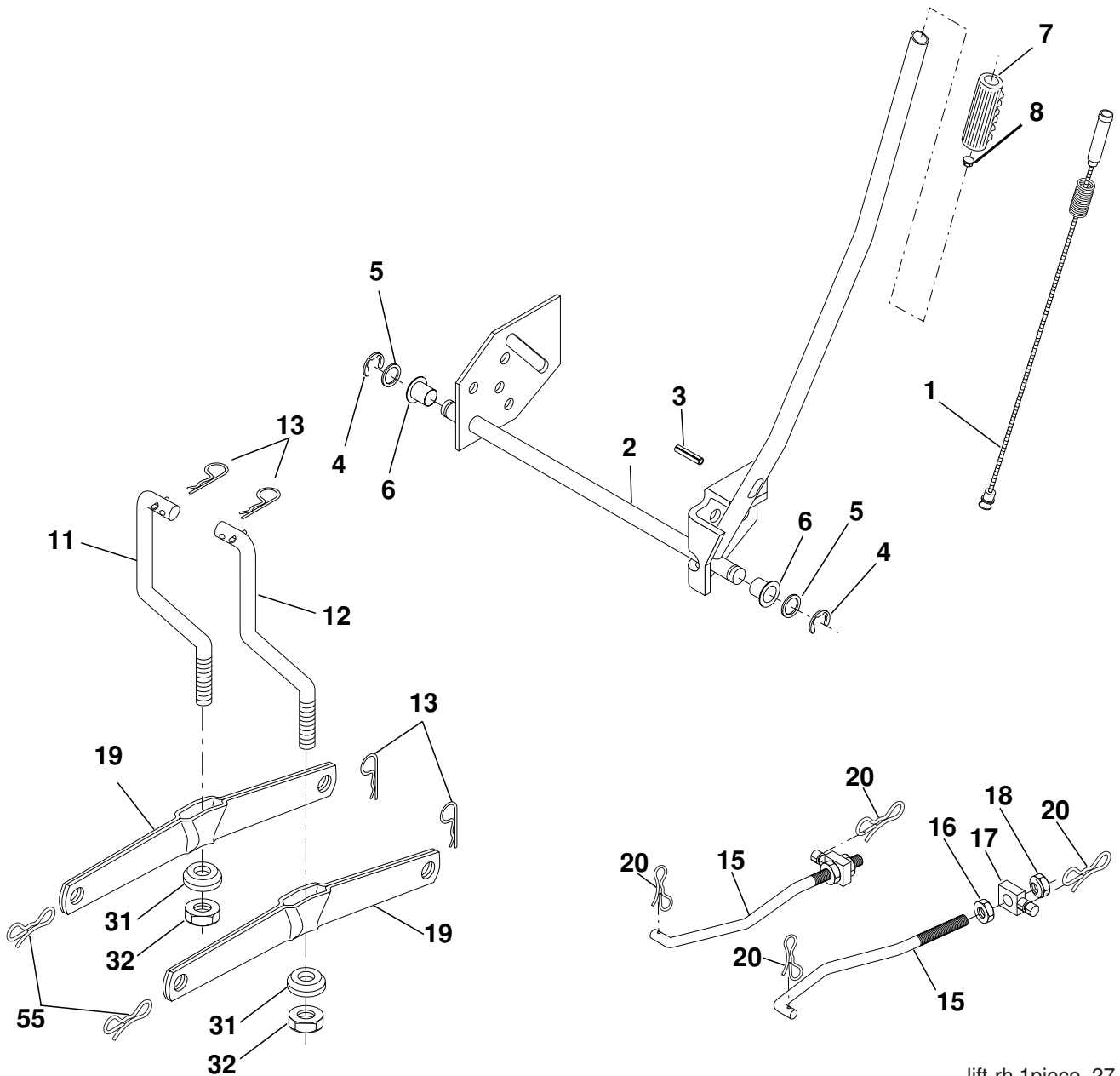
engine-kohler_43

| KEY NO. | PART NO. | DESCRIPTION | KEY NO. | PART NO. | DESCRIPTION |
|---------|--------------|---|---------|--------------|-----------------------------------|
| 1 | 532 17 08-05 | Control Th/ch Flag | 37 | 532 13 70-40 | Line Fuel 20" |
| 2 | 817 72 04-08 | Screw Hex Thd Cut 1/4-20 x 5/8 T | 38 | 532 18 16-54 | Plug Drain Oil Easy |
| 3 | ----- | Engine Kohler Model # SV470 (Order Parts From Engine Manufacturer) | 40 | 532 12 40-28 | Bushing Snap Nyl Blk Fuel Line |
| 4 | 532 18 86-55 | Muffler | 44 | 817 67 04-12 | Screw Hexwsh Thdrol 1/4-20 x 3/4 |
| 8 | 532 17 18-77 | Bolt 5/16-18 x 3/4 | 45 | 817 00 06-12 | Screw Hex Wsh Thdrol 3/8-16 x 3/4 |
| 13 | 532 18 59-09 | Gasket Engine | 46 | 819 09 14-16 | Washer 9/32 x 7/8 X 16 Ga |
| 14 | 532 14 84-56 | Tube Drain Oil Easy | 81 | 873 51 04-00 | Nut 1/4-20 |
| 23 | 532 16 98-37 | Shield Brn/Dbr Guard | 105 | 817 12 06-16 | Screw 3/8-16 x 1 |
| 29 | 532 13 71-80 | Kit Spark Arrester (Flat Scrn) | 116 | 532 18 43-62 | Nut Hex Flange Toplock M8-1.25 |
| 31 | 532 18 49-00 | Tank Fuel Front | 117 | 532 18 86-54 | Tube Exhaust |
| 32 | 532 19 77-25 | Cap Asm Fuel | | | |
| 33 | 532 12 34-87 | Clamp Hose Black | | | |

NOTE: All component dimensions given in U.S. inches.
1 inch = 25.4 mm.

REPAIR PARTS

TRACTOR - MODEL NO. LTH151 (96011011200), PRODUCT NO. 960 11 01-12
MOWER LIFT



lift-rh.1piece_27

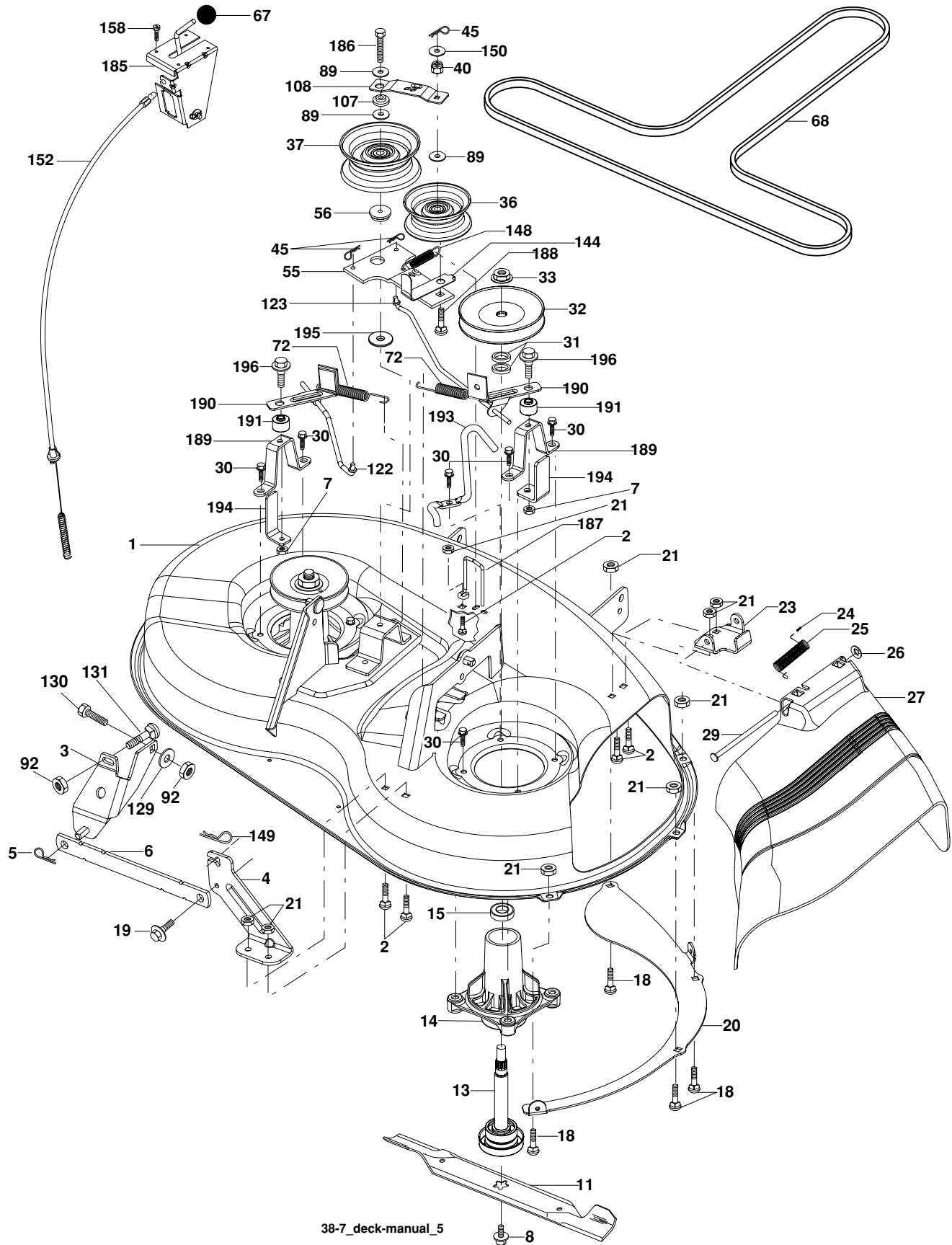
| KEY NO. | PART NO. | DESCRIPTION |
|---------|--------------|---------------------------------|
| 1 | 532 15 94-60 | Wire Asm Inner/Spring W/plunger |
| 2 | 532 15 94-71 | Shaft Asm Lift |
| 3 | 532 10 57-67 | Pin Groove |
| 4 | 812 00 00-02 | E Ring #5133-62 |
| 5 | 819 21 16-21 | Washer PLTD 21/32 x 1 x 21Ga. |
| 6 | 532 12 01-83 | Bearing Nylon Blk 629 Id |
| 7 | 532 10 94-13 | Grip Handle Bicycle |
| 8 | 532 12 45-26 | Button Plunger Black |
| 11 | 532 13 98-65 | Link Lift LH |
| 12 | 532 13 98-66 | Link Lift RH |
| 13 | 532 12 46-70 | Retainer Spring |
| 15 | 532 17 32-88 | Link Front |

| KEY NO. | PART NO. | DESCRIPTION |
|---------|--------------|------------------------------|
| 16 | 873 35 08-00 | Nut Jam Hex 1/2-13 unc |
| 17 | 532 17 56-89 | Trunnion Blk Zinc |
| 18 | 873 80 08-00 | Nut Lock W/wsh 1/2-13 unc |
| 19 | 532 13 98-68 | Arm Suspension Rear |
| 20 | 532 19 42-09 | Pin Cotter 7/16 Bow Tie Lock |
| 31 | 532 16 98-65 | Bearing Pvt. Lift |
| 32 | 873 54 06-00 | Nut Crownlock 3/8-24 |
| 55 | 532 19 42-08 | Pin Cotter 5/16 Bow Tie Lock |

NOTE: All component dimensions given in U.S. inches.
1 inch = 25.4 mm.

REPAIR PARTS

TRACTOR - MODEL NO. LTH151 (96011011200), PRODUCT NO. 960 11 01-12
MOWER DECK



REPAIR PARTS

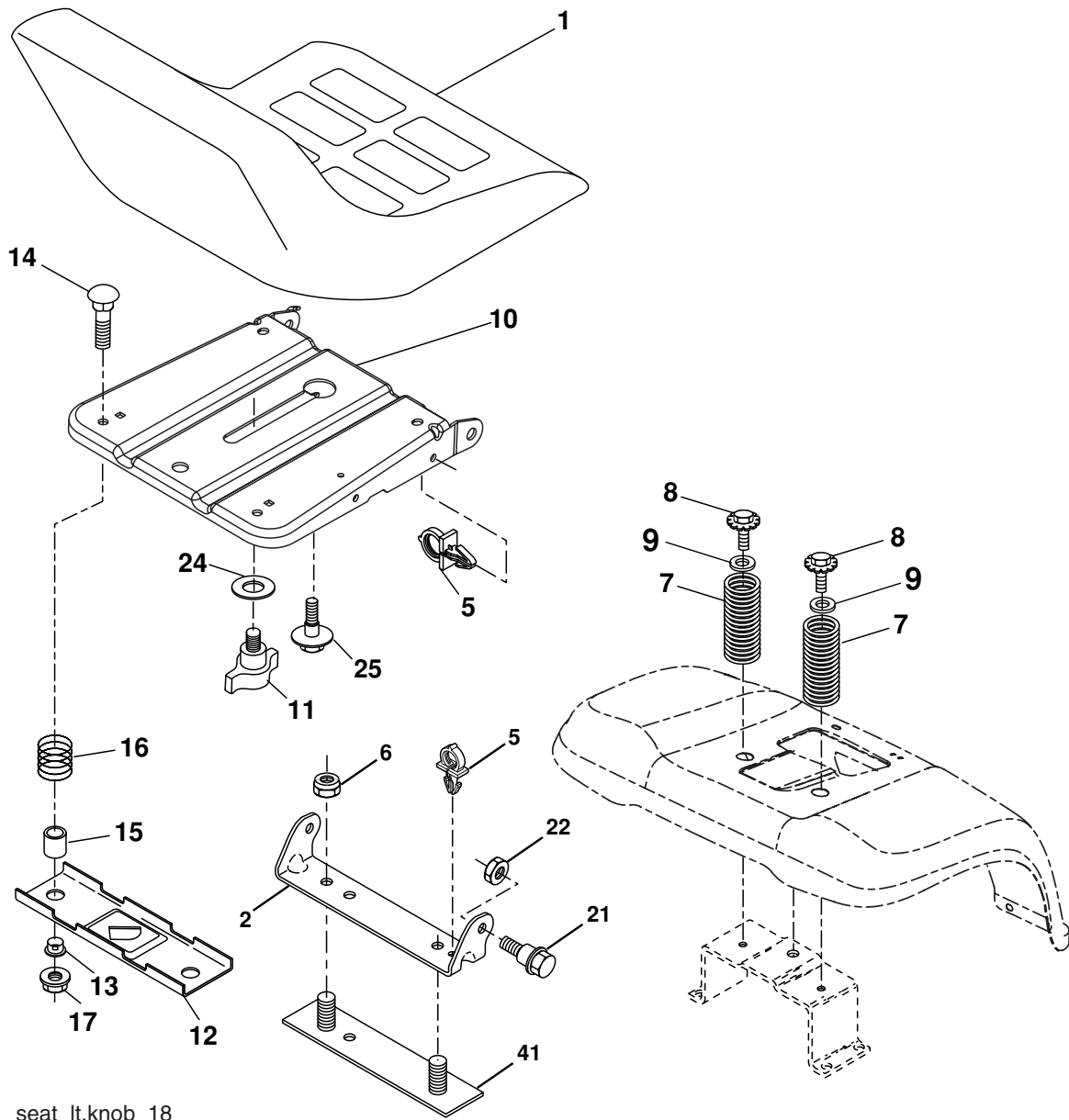
TRACTOR - MODEL NO. LTH151 (96011011200), PRODUCT NO. 960 11 01-12
MOWER DECK

| KEY NO. | PART NO. | DESCRIPTION | KEY NO. | PART NO. | DESCRIPTION |
|---------|--------------|---------------------------------|---------|--------------|--|
| 1 | 532 19 25-56 | Mower Housing Assembly | 92 | 873 80 06-00 | Nut Lock Hex w/Ins. 3/8-16 unc |
| 2 | 872 14 05-06 | Bolt Carriage 5/16-18 x 3/4 | 107 | 532 13 35-02 | Spacer Retainer |
| 3 | 532 13 80-17 | Bracket Asm Fr. Sway Bar | 108 | 532 13 35-03 | Stiffener, Idler Arm |
| 4 | 532 19 25-68 | Bracket Deck Sway Bar 38"/42" | 122 | 532 19 25-75 | Rod, Brake LH |
| 5 | 532 12 46-70 | Retainer Spring | 123 | 532 19 25-76 | Rod, Brake RH |
| 6 | 532 17 80-24 | Bar Sway Deck | 129 | 819 13 13-12 | Washer 13/32 x 13/16 x 12 Ga. |
| 7 | 873 80 05-00 | Nut Lock Hex w/Ins. 5/16-18 unc | 130 | 874 78 06-16 | Bolt Fin Hex 3/8-16 x 1 x Gr.5 |
| 8 | 532 19 30-03 | Bolt 3/8-24 x 1.25 Gr. 8 | 131 | 872 14 06-08 | Bolt RDHD SQNK 3/8-16 unc x 1 |
| 11 | 532 19 39-57 | Blade Mower | 144 | 532 19 34-14 | Keeper Belt Idler Tension |
| 13 | 532 19 28-72 | Shaft Assembly, Mandrel, Vented | 148 | 532 16 90-22 | Spring Return Idler |
| 14 | 532 18 72-81 | Housing, Mandrel, Vented | 149 | 532 16 58-98 | Retainer Spring Yellow |
| 15 | 532 11 04-85 | Bearing, Ball, Mandrel | 150 | 819 09 12-10 | Washer 9/32 x 3/4 x 10 Ga. |
| 18 | 872 14 05-05 | Bolt Rdhd Sqnk 5/16-18 x 5/8 | 152 | 532 19 32-35 | Clutch Cable 38"/46" |
| 19 | 532 13 28-27 | Bolt, Shoulder | 158 | 817 72 04-08 | Screw Hex Thd Cut 1/4-20 x 1/2 |
| 20 | 532 40 00-95 | Baffle Vortex Front | 185 | 532 18 82-34 | Head Asm Cable Clutch |
| 21 | 873 68 05-00 | Nut | 186 | 817 49 06-44 | Screw Hex Wsh Thdrol 3/8-16 x 2-3/4 |
| 23 | 532 19 25-57 | Bracket, Mower Deflector | 187 | 532 19 34-12 | Keeper Belt |
| 24 | 532 10 53-04 | Cap, Sleeve | 188 | 532 16 58-91 | Bolt Carriage Idler |
| 25 | 532 19 70-26 | Spring, Torsion, Deflector | 189 | 532 19 25-59 | Stand, Brake |
| 26 | 532 11 04-52 | Nut, Push | 190 | 532 19 25-60 | Arm, Brake |
| 27 | 532 40 14-72 | Shield, Deflector | 191 | 532 19 25-61 | Spacer, Brake |
| 29 | 532 13 14-91 | Rod, Hinge | 193 | 532 19 34-13 | Keeper Belt Rh Mandrel |
| 30 | 532 17 39-84 | Screw Thdrol. | 194 | 532 19 41-05 | Guard Brake |
| 31 | 532 18 76-90 | Washer, Spacer | 195 | 819 13 32-10 | Washer 13/32 x 2 x 10 Ga. |
| 32 | 532 15 35-32 | Pulley, Mandrel | 196 | 532 19 37-82 | Bolt/Washer Asm 5/16-18 |
| 33 | 532 40 02-34 | Nut, Toplock | -- | 532 19 25-58 | Brake Assembly (Includes Stand, Arm and Guard Components) |
| 36 | 532 13 14-94 | Pulley, Idler, Flat | -- | 532 19 28-70 | Mandrel Assembly (Includes Housing, Shaft and Shaft Hardware Only - Pulley Not Included) |
| 37 | 532 19 31-98 | Pulley Idler Flat | -- | 532 19 36-46 | Replacement Mower, Complete |
| 40 | 873 68 06-00 | Nut, Crownlock 3/8-16 unc | | | |
| 45 | 532 12 47-88 | Retainer | | | |
| 55 | 532 13 38-40 | Idler Arm Assembly | | | |
| 56 | 532 16 57-23 | Spacer, Retainer | | | |
| 67 | 532 10 69-32 | Knob | | | |
| 68 | 532 19 32-14 | V-Belt | | | |
| 72 | 532 19 32-16 | Spring Brake Return | | | |
| 89 | 819 13 13-11 | Washer 13/32 x 13/16 x 11 Ga. | | | |

NOTE: All component dimensions given in U.S. inches.
 1 inch = 25.4 mm.

REPAIR PARTS

TRACTOR - MODEL NO. LTH151 (96011011200), PRODUCT NO. 960 11 01-12
SEAT ASSEMBLY



seat_lt.knob_18

| KEY NO. | PART NO. | DESCRIPTION |
|---------|--------------|--------------------------------|
| 1 | 532 19 01-20 | Seat |
| 2 | 532 14 05-51 | Bracket Pivot Seat 8 720 |
| 5 | 532 14 50-06 | Clip Push-In |
| 6 | 873 80 06-00 | Nut Hex w/Ins. 3/8-16 unc |
| 7 | 532 12 41-81 | Spring Seat Cprsn 2 250 Blk Zi |
| 8 | 817 00 06-16 | Screw 3/8-16 x 1-1/2 |
| 9 | 819 13 16-14 | Washer 13/32 x 1 x 14 Ga. |
| 10 | 532 19 55-30 | Pan Seat |
| 11 | 532 16 63-69 | Knob Seat |
| 12 | 532 17-46-48 | Bracket Mounting Switch |
| 13 | 532 12 12-48 | Bushing Snap Blk Nyl 50 ld |
| 14 | 872 05 04-12 | Bolt Rdhd Sqnk 1/4-20 x 1-1/2 |

| KEY NO. | PART NO. | DESCRIPTION |
|---------|--------------|---------------------------------|
| 15 | 532 13 43-00 | Spacer Split 28 x 96 Yel Zinc |
| 16 | 532 12 12-50 | Spring Cprsn 1 27 Blk Pnt |
| 17 | 532 12 39-76 | Nut Lock 1/4 Lge Flg Gr. 5 Zinc |
| 21 | 532 17 18-52 | Bolt Shoulder 5/16-18 unc |
| 22 | 873 80 05-00 | Nut Hex Lock W/Ins 5/16-18 |
| 24 | 819 17 19-12 | Washer 17/32 x 1-3/16 x 12 Ga. |
| 25 | 532 12 70-18 | Bolt Shoulder 5/16-18 x 62 |
| 41 | 532 14 06-75 | Strap Asm. Fender |

NOTE: All component dimensions given in U.S. inches.
1 inch = 25.4 mm.