

FS 513

FS 520

FS 524

Spare Parts

Piezas de repuesto

Pieces de rechange

Ersatzteile

Reserveonderdelen

Ricambi

Peças sobresselente

Reservdelar

FS 513-520-524

PART NO.	POS.	DESCRIPTION	PART NO.	POS.	DESCRIPTION
501 04 76-02	C	Frame, Lower - Husq Orange	542 16 76-22	K1-2	Nut, Tube M16
501 04 83-01	C	Axle, Front, Zinc Plated	542 16 77-63	A	Pulley
501 04 85-02	C	Spacer, Wheel, Z/P	542 16 78-46	B	Nut, Bladeshaft .625-11 LH - Black
501 04 87-01	C	Frame, Lower Assy	542 16 78-47	B	Nut, Bladeshaft .625-11 RH - Natural
501 97 13-01	K2	Adapter, Hose Barb M14 x 10	542 16 79-64	B	Pin, Drive
501 97 14-02	K2	Sheave PK, 54mm x 28.6mm 16Gr, B/O	542 16 90-65	K1-2	Decal: Hot Muffler
502 24 01-01	H1	Decal, Control Panel - 18H	542 17 21-37	M1-2	Rope, Nylon 4mm Dia x 2.5M
502 28 91-01	F1	Cover, Console - FS513	542 17 70-66	G2	Boot, Rubber, Batt. Term. (Black)
504 00 79-01	B	Kit, Bladeshaft (Heat Fit) w/ 92mm Pulley	542 17 79-20	H2	Keyswitch w/ Key & Hardware
504 01 08-01	F2	Grommet, Rubber, 30mm ID	542 18 22-50	H2	Wire Harness - FS520
504 06 80-04	H2	Bracket, Neutral Switch - Z/P	542 18 22-52	H1	Cord, Emerg. Stop
504 06 83-01	D,K2	Belt, Poly-V PK 16Gr x 760mm	542 18 22-53	G2	Cable, Battery - Neg
504 10 11-02	N2	Clip, Nose Piece	542 18 22-54	G2	Cable, Battery - Pos
504 11 10-02	A	Bushing, Idler Arm - Z/P	542 18 22-74	H2	Wire Harness - FS524
504 11 13-02	A	Spacer, Idler - Z/P	542 18 31-06	E	Cap, Gas - w/o Guage
504 20 21-03	F1	Cover, Toolbox, 13H - Husq Orange	542 18 44-55	A	HHCS, M10-1.5 x 130 8.8 DIN931
504 20 75-01	I	Handle, Raise/ Lower	542 19 01-14	K2	Engine, 24 HP - Honda
539 30 00-72	K1-2	Clamp, Hose Worm Drive	542 19 03-92	E	Valve, Fuel, 1/4" SAE x 1/8" NPTM
539 30 00-92	I	Key, Woodruff (Ansi #405)	542 19 03-93	E	Bushing, Hex 1/8" NPTF x 1/4" NPTM
539 30 05-00	K2	Engine, 13 HP - Honda	542 19 04-06	K2	Engine, 20 HP - Honda
539 30 05-56	H1-2	Tach/Hour Meter	542 19 04-34	I	Bearing, Flange 0.5 ID, 2-Bolt
539 91 27-57	K1-2	Key 0.25 Sq x 1.25 Lg	542 19 05-19	P3	Hinge, 3" - Z/P
539 97 04-98	E	Hose, Fuel 1/4" (.85M)	542 19 05-60	G2	Clamp, Vinyl Coated 3/8 x 0.75
539 97 69-41	K1-2	HHCS, .375-16 x 1.25, Gr5	542 19 05-89	H1-2	Decal, Depth Indicator
539 99 02-58	I	Nut, Hex 1/2-13	542 19 05-93	F1-2	Decal: Tool Box Warning
541 20 10-11	D	V-Belt, AX42	542 19 06-17	O	Decal: Water Tank
541 20 51-97	K1-2	HHCS, .3125-24 x 1.00, Gr5	542 19 06-36	H2	Decal, Control Panel 20H/24H
541 20 71-61	I	Handle Assembly	542 19 06-38	H1-2	Decal, Warning, Control Panel
541 20 71-76	I	Hand Crank Assembly	542 19 06-39	E	Decal: Unleaded Gasoline
541 20 71-88	B	Slinger, Black Oxide	542 19 06-46	F1-2	Decal: Local Service
541 20 72-09	I	Screw Tube - Husq Grey	542 19 07-08	F1	Decal: FS513
541 20 72-12	A	Bracket, Inner - Black	542 19 07-09	F2	Decal: FS520
541 20 72-14	A	Bracket, Outer - Black	542 19 07-10	F2	Decal: FS524
541 20 72-29	A	Arm, Idler - Black	542 19 07-33	H1-2	Decal: Husqvarna 9.5"
541 20 72-34	D	Hub, Wheel - Black	542 19 61-83	E,O	O-Ring - 210NPR
541 20 72-40	B	Tube, Bladeshaft	542 19 61-84	E,O	Fitting, Water Tank
541 20 72-41	B	Bladeshaft - Compl	542 19 79-62	B	Collar, Outer: 4.5 B/O w/ Drive Pin
541 20 81-60	B	Bearing Insert 25mm	542 19 88-42	D	Wheel, 10" Dia x 3"
541 20 81-75	K2	Sheave PK, 67mm x 25.4mm 16Gr, B/O	542 19 90-53	D	Bolt, Hex Wshr Hd M8-1.25x25, Dog Pt
541 20 81-90	K1-2	Plate, Tensioner - Black	542 20 20-62	C	Washer Plated
541 20 81-94	K1-2	Spacer Idler Sheave - Black Oxide	542 20 20-75	L1-2	Bushing, Spanner
541 20 81-95	K1-2	Sheave Idler - Black Oxide	542 20 20-78	L1	Pointer - Compl
541 20 81-96	K1-2	Idler Sheave - Compl	542 20 20-93	O	Tank, Water
541 20 82-12	E	Fuel Tank	542 20 20-99	F1-2,G1	U-Nut, M8-1.25
541 20 82-30	P1-2	Bearing, 8mm	542 20 21-06	L1-2	Washer, Snub
541 20 82-37	P1	Steel Guard, Rear, 18" - Black	542 20 21-22	K1-2	Belt Guard - Husq Grey
541 20 82-40	P1	Steel Guard, Front, 18" - Black	542 20 21-28	N1-2	Clip, Nose Piece
541 20 82-45	P1-2	Plate, Spade Retaining	542 20 21-30	L1	Bar, Bent Finished
541 20 82-46	P1-2	Cover, Blade Shaft	542 20 21-31	L1	Bar, Straight Finished
541 20 82-49	P1-2	Pivot Tube, Blade Guard	542 20 21-49	D,K2	Belt, Poly-V PK 16Gr x 775mm
541 20 82-63	P1-2	Fitting 1/4 NPT x 6mm Barb, 90°	542 20 21-50	D,K1	Belt, Poly-V PK 12Gr x 775mm
541 20 82-65	P1	Tube, 10mm OD x 2mm Wall - 18"	542 20 21-51	K1	Oil Drain - Compl - 13H
541 20 82-78	F1-2	Hinge, Rubber	542 20 21-52	K1-2	Hose, Oil Drain
541 20 82-79	H1-2	Shoulder Bolt, M10 x 30	542 20 21-63	H1-2	Wheel, Depth Gauge
541 20 82-81	F1-2	Latch, 1/4 Turn	542 20 21-64	H1-2	Bracket, Depth Gauge, Z/P
541 20 82-84	O	Cap, Water	542 20 21-65	I	Spring, Lifting
541 20 82-86	O	Water Tank - Compl	542 20 21-66	I	Bracket, Spring Adjust, Pltd
541 20 83-18	G2	Battery, 12V, Sealed Lead Acid	542 20 21-69	H1-2	Cap, Round Vinyl
541 20 83-19	A	Jackshaft - Compl	542 20 21-70	F1-2	Plate Rivet
541 20 83-38	D	Transaxle - FS500	542 20 21-71	F1-2	Plate Rivet, Plated
542 04 56-40	O	Washer-Filter	542 20 21-81	J	Engine Cage Right - 13HP
542 13 90-45	P3	Manifold, Water	542 20 21-82	J	Engine Cage Left - 13 HP
542 13 90-51	P3	Gasket, Water Manifold	542 20 21-84	J	Washer, Tube - 8mm ID
542 13 92-73	K1-2	Bearing 20mm ID	542 20 21-85	J	Bar, Tank Pivot
542 13 95-37	O	Valve, Water, 1/2" FPT	542 20 21-86	J	Bar, Lifting Bail
542 13 95-68	H1-2	Grip, Handle	542 20 21-87	J	U-Bolt
542 13 97-68	C,D,K1-2	SHSS, M8-1.25 x 6, DIN916 12.9	542 20 21-88	J	Washer, Tube - 12mm ID
542 13 97-69	D	SHSS, M6 x 6 12.9 DIN916	542 20 22-38	K1	Sheave PK, 67mm x 25.4mm 12Gr, B/O
542 16 11-96	A,K1-2	Isolator, Engine 30-35 Durometer	542 20 22-52	J	Engine Cage - Right - 20HP
542 16 12-35	F1-2	Decal: PATENT PENDING	542 20 22-55	J	Engine Cage - Left - 20 HP
542 16 27-61	M1-2	Clamp, Cord	542 20 22-70	L2	Pointer, Dual - compl
542 16 66-24	N1-2	Fastener, Tufflock	542 20 22-71	L2	Bar, Outside
542 16 67-08	H2	Relay, NO/NC	542 20 22-74	L2	Bar, Inside
542 16 69-55	G2	Clamp, Vinyl Coated 3/8 x 1.0	542 20 22-83	I	Spring, Extension
542 16 71-33	K1	Adapter, Hose Barb M12 x 10	542 20 22-92	B	Wrench, 27mm Open
542 16 71-85	B	Collar, Inner: 4.5 Black Oxide	542 20 23-00	I	HHCS, M12-1.75 x 190 8.8 DIN933
542 16 73-06	K1-2	Cap, Oil Drain	542 20 23-07	F1-2	Pad, Resilient

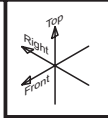
FS 513-520-524

PART NO.	POS.	DESCRIPTION	PART NO.	POS.	DESCRIPTION
542 20 23-08	O	Adapter, Hose Swvl 3/4" FGH x 1/2" NPTM	543 04 59-32	L1-2	Wheel, Pointer
542 20 23-09	H1-2	Switch, Stop	543 04 59-32	L1-2	Wheel, Pointer
542 20 23-11	O	Bracket, Water	543 04 59-49	C	Wheel, 125mm
542 20 23-15	O	Water, Side - compl	543 04 60-31	I	Pad, Foot D/35
542 20 23-20	O	Fitting/Tank, Water - Compl	543 07 40-65	A	Nut, Hex Lock M20-2.5
542 20 23-21	O	Fitting, 1/2" NPTM x 12mm Barb	543 85 00-37	P3	Decal: Direction Arrow
542 20 23-30	H1-2	Cable, Throttle	543 85 01-31	O	Fitting, 1/4" Male x 12mm Barb, 90°
542 20 23-31	D	Pivot, Pin	543 85 03-44	O	Clip, Hose
542 20 23-32	D	Pivot, Pin	543 85 03-59	O	Adapter, Quick Coupling (CE)
542 20 23-33	A	Spring, Tensioning	721 61 43-01	H1-2	Split Pin 1.6x22 DIN94
542 20 23-40	O	Fitting, Adapter, 1/2" NPTF x 3/8" NPTM	721 61 51-01	D	Pin, Split, 2x14 DIN94
542 20 23-42	H1-2	Console - Husq Grey	721 62 14-01	A	Pin, Split, 5 x 32mm Z/P
542 20 23-48	F1-2	Side, Right - Husq Orange	722 78 18-03	F1-2	Pop Rivet, 3.2 Dia x 6.7 Alum
542 20 23-49	F1-2	Side, Left - Husq Orange	722 79 43-03	F1-2	Pop Rivet, 4.0 Dia x 10.3 Alum
542 20 23-50	F1-2	Door, Tool Box - Husq Orange	724 13 29-51	P1-2	PHMS, M5-0.8 x 16
542 20 23-52	F1-2	Bottom, Tool Box - Husq Orange	724 13 29-55	H1-2	PHCS, M5-0.8 x 16
542 20 23-60	P1	Blade Guard - Compl 18" CE - Husq Grey	725 22 91-71	H1-2	HHCS, M4-0.7 x 12 8.8 DIN933
542 20 23-62	P1	Blade Guard, Rear - Compl 18"	725 23 29-71	I,K2	HHCS, M5-0.8 x 16 8.8 DIN933
542 20 23-63	P1	Blade Guard, Front - Compl 18"	725 23 31-71	P1-2	HHCS, M5-0.8 x 20 8.8 DIN933
542 20 23-74	A	Shaft Guard - Husq Grey	725 23 66-71	G2	HHCS, M6-1.0 x 12, 8.8, DIN933
542 20 23-79	I	Bushing, Press - Black Oxide	725 23 68-71	P3	HHCS, M6-1.0 x 16, 8.8, DIN933
542 20 24-23	C	Collar, Set, Z/P	725 23 70-71	A	HHCS, M6-1.0 x 20 8.8 DIN933
542 20 31-17	A	Spring Anchor	725 23 72-71	I	HHCS, M6-1.0 x 25 8.8 DIN933
542 20 40-52	H2	Switch, Pushbutton	725 23 76-71	P1	HHCS, M6-1.0 x 35 8.8 DIN933
542 20 40-63	P1-2	Spray Jet	725 23 78-71	P3	HHCS, M6-1.0 x 40 8.8 DIN933
542 20 40-64	P1-3	Splash Flap	725 24 47-71	P1-3	HHCS, M8-1.25 x 12 8.8 DIN933
542 20 40-81	K2	Muffler - Compl	725 24 49-71	K2	HHCS, M8-1.25 x 168.8 DIN933
542 20 40-83	I	Spacer - Plated	725 24 51-71	P3	HHCS, M8-1.25 x 20, 8.8, DIN933
542 20 40-89	P2	Blade Guard - Compl 20" CE - Husq Grey	725 24 53-71	A,F1-2,G1-2	HHCS, M8-1.25 x 25 8.8 DIN933
542 20 40-96	P2	Steel Guard, Rear, 20" - Black	725 24 55-71	L1-2	HHCS, M8-1.25 x 30 8.8 ISO 4017 DIN933
542 20 40-97	P2	Steel Guard, Front, 20" - Black	725 24 57-71	H1-2	HHCS, M8-1.25 x 35 8.8 DIN933
542 20 41-01	P2	Tube, 10mm OD x 2mm Wall - 20"	725 24 61-71	J	HHCS, M8-1.25 x 50 8.8 DIN933
542 20 41-09	H1-2	Locking Pin - Plated	725 24 63-51	J	HHCS, M8-1.25 x 60 8.8 DIN933
542 20 41-13	H1-2	Spring, Conical	725 24 67-51	A	HHCS, M8-1.25 x 80 8.8 DIN931
542 20 41-14	I	Screw, .625-8 Acme Thread - B/Oxide	725 24 71-51	A,P1-2	HHCS, M8-1.25 x 100 8.8 DIN931
542 20 41-16	I	Cable - Depth Indicator	725 24 91-71	A	HHCS, M10-1.5 x 20 8.8 DIN933
542 20 41-17	D	V-Belt, AX24	725 24 93-71	C	HHCS, M10-1.5 x 25 8.8 DIN933
542 20 41-18	E	Fitting, 1/4" Barb x SAE 45° Swivel	725 24 95-71	A	HHCS, M10-1.5 x 30 8.8 DIN933
542 20 41-21	A	Pin, Clevis 20 x 34mm	725 24 97-71	A	HHCS, M10-1.5 x 35 8.8 DIN933
542 20 41-35	A	HHCS, M20-2.5 x 50 10.9 Z/P	725 24 99-71	A	HHCS, M10-1.5 x 40 8.8 DIN933
542 20 41-37	A	Bushing, Pulley	725 25 01-51	K1-2	HHCS, M10-1.5 x 50 8.8 DIN931
542 20 41-40	D	Base Frame - Husq Orange	725 25 05-51	K1-2	HHCS, M10-1.5 x 70 8.8 DIN931
542 20 41-42	E	Fuel Tank/Fitting Assy	725 25 15-71	L1	HHCS, M10-1.5 x 120 8.8 DIN933
542 20 41-43	D	Key, 6 Sq x 30mm, Rd End	725 25 42-51	K1-2	HHCS, M12-1.75 x 50 8.8 DIN931
542 20 41-44	P1	Blade Guard, Rear - Compl 20"	731 23 18-01	L1-2	Nut, Hex, M8-1.25 DIN934
542 20 41-45	P2	Bld Grd, Front, 20" - compl - Husq Grey	731 23 20-01	L1-2	Nut, Hex, M10-1.5 DIN934
542 20 41-49	N1	Nose Piece - Husqvarna - FS513	731 23 22-01	J	Nut, Hex M12 DIN934
542 20 41-50	N2	Nose Piece - Husqvarna - FS520/524	732 25 14-01	P1-2	Nut, Hex Lock, M5-0.8, 8.8 DIN985
542 20 41-51	H1	Cable, Throttle	732 25 16-01	P1-3	Nut, Hex Lock, M6-1.0, 8.8 DIN985
542 20 41-67	F2	Cover, Toolbox, 20H/24H - Husq Orange	732 25 18-01	A,F1-2,G2,	Nut, Hex Lock, M8-1.25, 8.8 DIN985
542 20 41-68	F2	Cover, Console - FS520/24	732 25 18-01	H1-2,J,L1-2,	Nut, Hex Lock, M8-1.25 8.8 DIN985
542 20 41-70	G1	Belt Cover, Side Front - Husq Orange	732 25 18-01	,M1-2,P1-2	Nut, Hex Lock, M8-1.25, 8.8 DIN985
542 20 41-71	G1	Side Cover, Back - Husq Orange	732 25 20-01	A,D,I,K1-2	Nut, Hex Lock, M10-1.50, 8.8 DIN985
542 20 41-72	G1	Cover, Transaxle, Back - Husq Orange	732 25 22-01	J	Nut, Hex Lock M12-1.75 DIN985
542 20 41-73	G1	Cover, Transaxle, Top - Husq Orange	734 11 46-01	I,K2	Washer, Flat M5 DIN125
542 20 41-74	F2	Bracket, Fuel Tank - Husq Orange	734 11 52-01	A,H1-2,G2,P1-2	Washer, Flat M6 DIN125
542 20 41-75	G2	Brace, Battery - Husq Orange	734 11 63-01	A,D,F1-2,G1-2,	Washer, Flat M8 DIN125
542 20 41-76	G2	Brace, Tank - Husq Orange	734 11 63-01	H1-2,K1-2,L2,	Washer, Flat M8 DIN125
542 20 41-79	K1-2	Plate, Engine Mount Husq Grey	734 11 63-01	M1-2,P3	Washer, Flat, M8 DIN125
542 20 41-80	K1-2	Plate, Belt Guard - Husq Grey	734 11 72-01	A,K1-2	Washer, Flat M10 DIN125
542 20 41-81	K2	Oil Drain - Compl - 20H/24H	734 11 74-41	C	Washer, M10 ISO 7093-10-140HV
542 20 41-85	A	Spade, Blade Guard - Husq Grey	734 11 78-01	I	Washer, Flat M12 DIN125
542 20 41-86	H1-2	Handle Bar - Compl	735 11 36-01	H1-2	Washer, Lock M4 DIN127
542 20 41-87	P3	Blade Guard, 24" - compl	735 11 46-01	I,K2	Washer, Lock M5 DIN127
542 20 41-88	P3	Bladeguard, 24", Front Husq Grey	735 11 53-01	A,I,P3	Washer, Lock M6 DIN127
542 20 41-92	P3	Bladeguard, 24", Rear Husq Grey	735 11 64-01	A,F1-2,G1-2,	Washer, Lock M8 DIN127
542 20 41-98	P3	Tube, Blade Guard - Galv	735 11 64-01	H1-2,J,K1-2,P3	Washer, Lock M8 DIN127
542 20 42-04	P3	Cover, Flange - Finished	735 11 73-01	A,C,K1-2	M10 Helical Spring Lock Washer Din 127
542 20 42-09	K2	Bracket, Throttle - Black	735 11 78-01	K1-2	Washer, Lock M12 DIN127
543 04 47-32	K1-2	Washer, Spring	735 31 40-10	K1-2	Snap Ring 47 x 1.75
543 04 54-58	I	Grease Zerk, M8 x 1.00			
543 04 55-39	O	Valve, 1/2" BSP			
543 04 55-80	O	Hose, 12x18mm (0.60M)			
543 04 56-10	O	Quick Coupler, Male			
543 04 56-12	O	Quick Coupler, Female			
543 04 57-88	F1-2	Decal: Sound Level - 108dB (A)			
543 04 58-91	A	Wrench, 13mm			

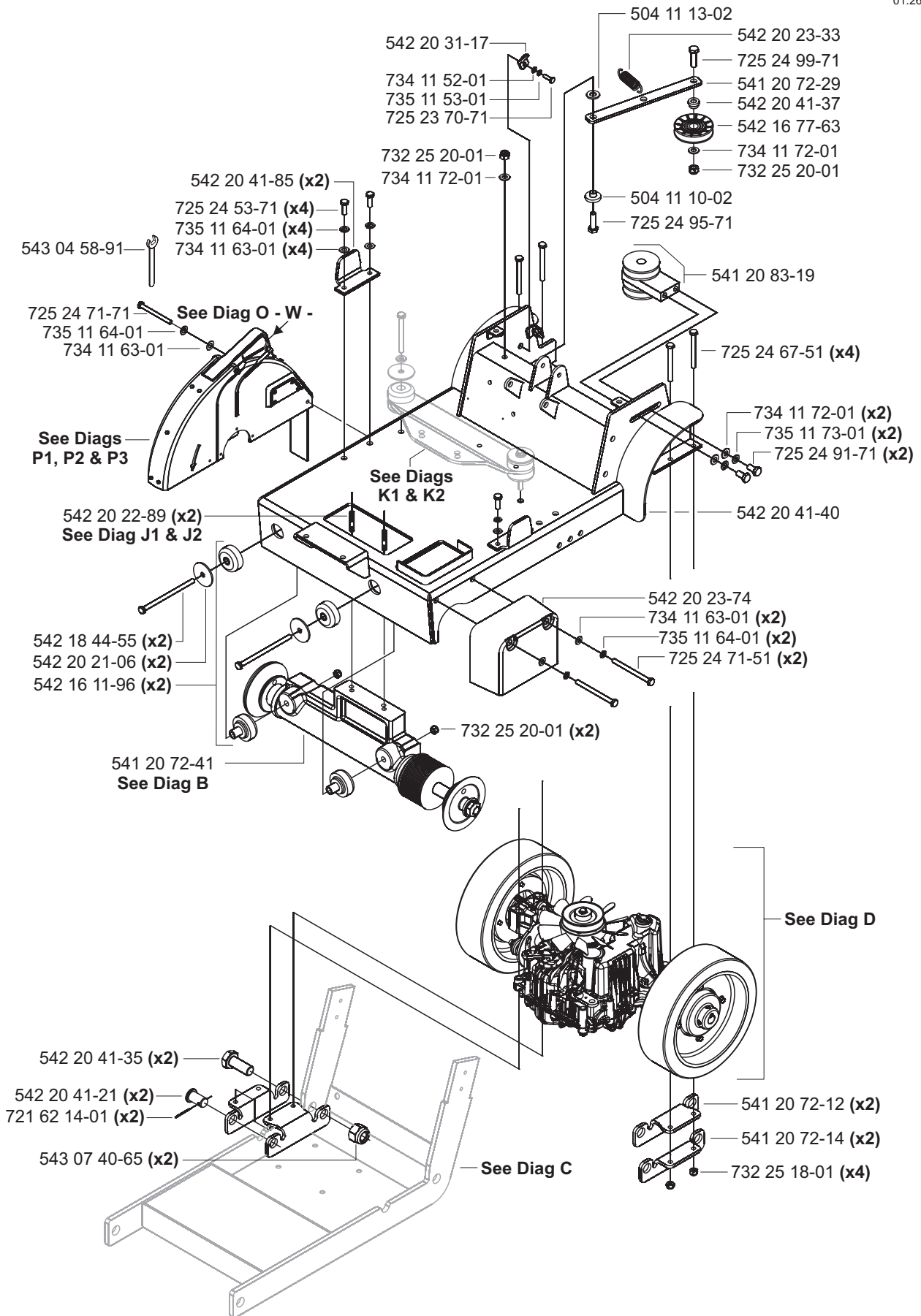
FS 513-520-524

PART NO.	POS.	DESCRIPTION	PART NO.	POS.	DESCRIPTION
MISC ITEMS & SPECIAL KITS			LEGEND		
542 20 10-73	N/S	OM Op Instr: FS513-FS524 (Husq)	BHMS		Button Head Machine Screw
542 20 10-74	N/S	IPL Parts List: FS513-FS524 (Husq)	FLHMS		FLat Head Machine Screw
			HHCS		Hex Head Cap Screw
			HWHSTS		Hex Washer Head Self-Tapping Screw
			RHMS		Round Head Machine Screw
542 20 11-23	O	Inst. Sheet: Water Tank	SBHCS		Socket Button Head Cap Screw
			SBHMS		Socket Button Head Machine Screw
504 00 79-01	B	Kit, Blade Shaft Service (Heat Fit)	SHCS		Socket Head Cap Screw
			SHSS		Scoker Head Set Screw
			STS		Self-Tapping Screw
			PHCS		Pan Head Cap Screw
			PHMS		Pan Head Machine Screw
			PHSTS		Pan Head Self-Tapping Screw
			FT		Full Thread
			Gr		Grade

A Upper Frame

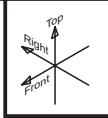


01.26.07

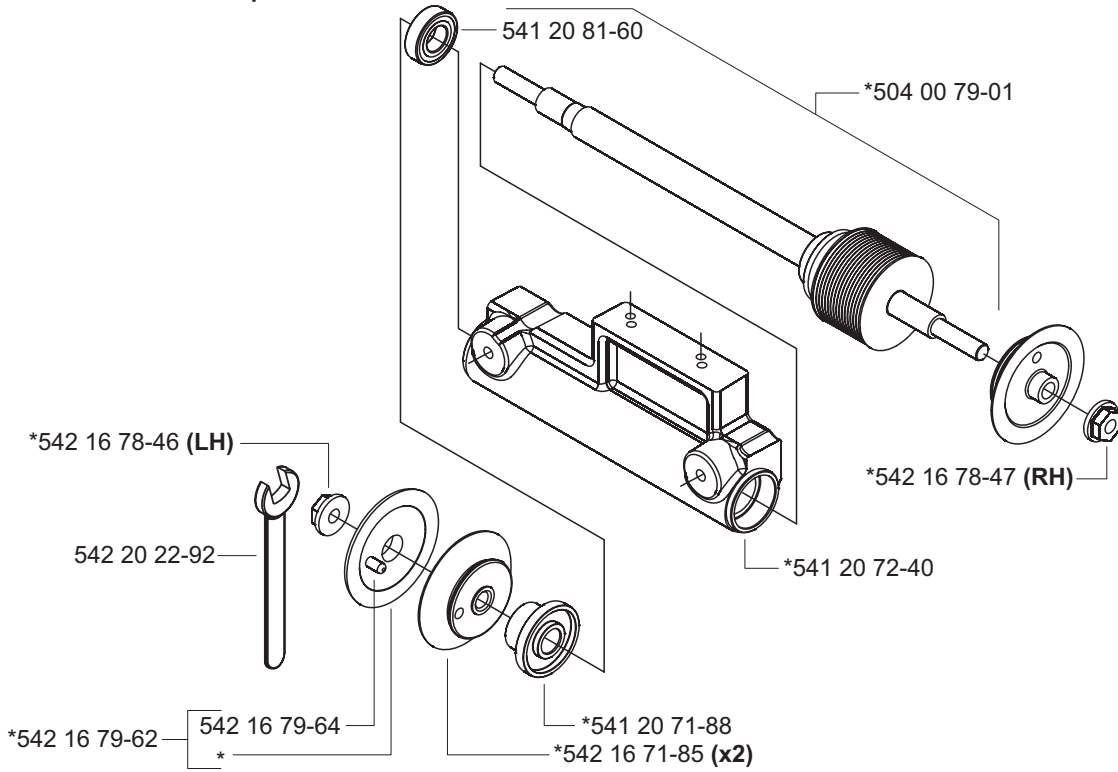


B Bladeshaft

*541 20 72-41 - Compl

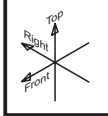


01.16.07

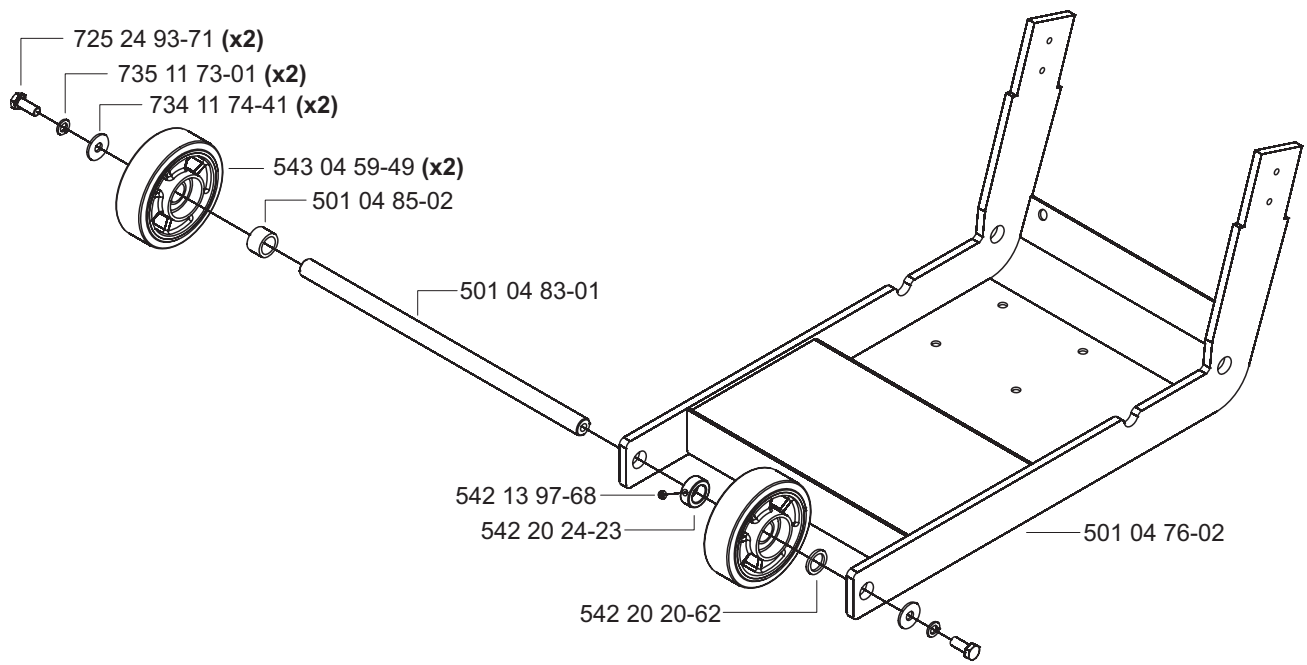


C Lower Frame

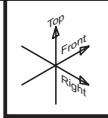
501 04 87-01 Compl



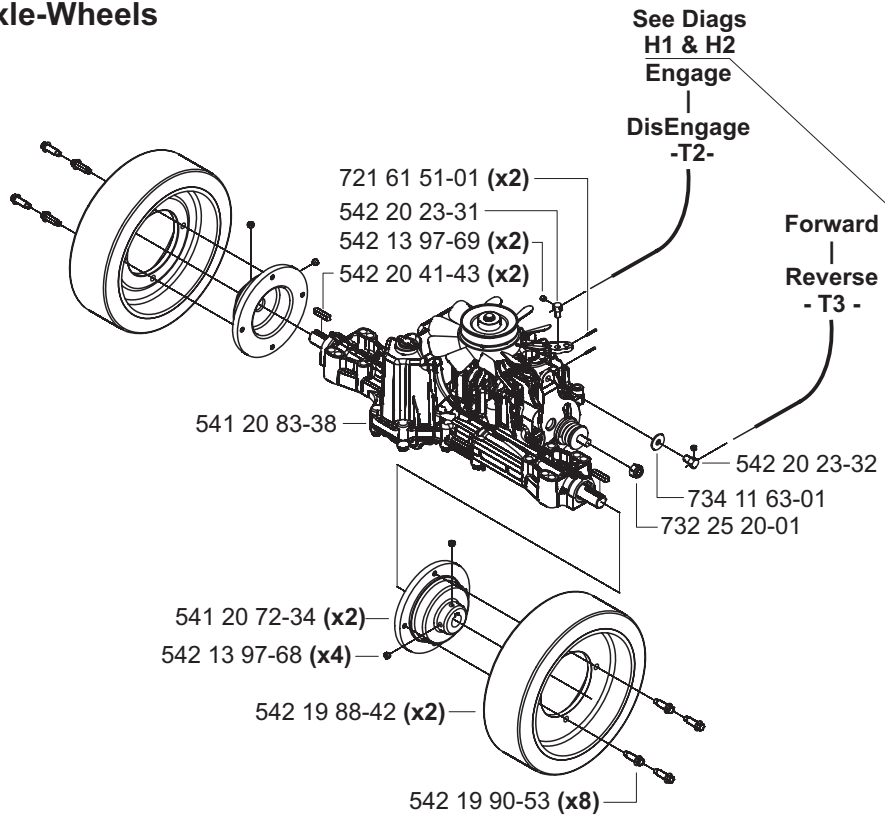
01.16.07



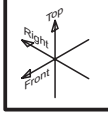
D Transaxle-Wheels



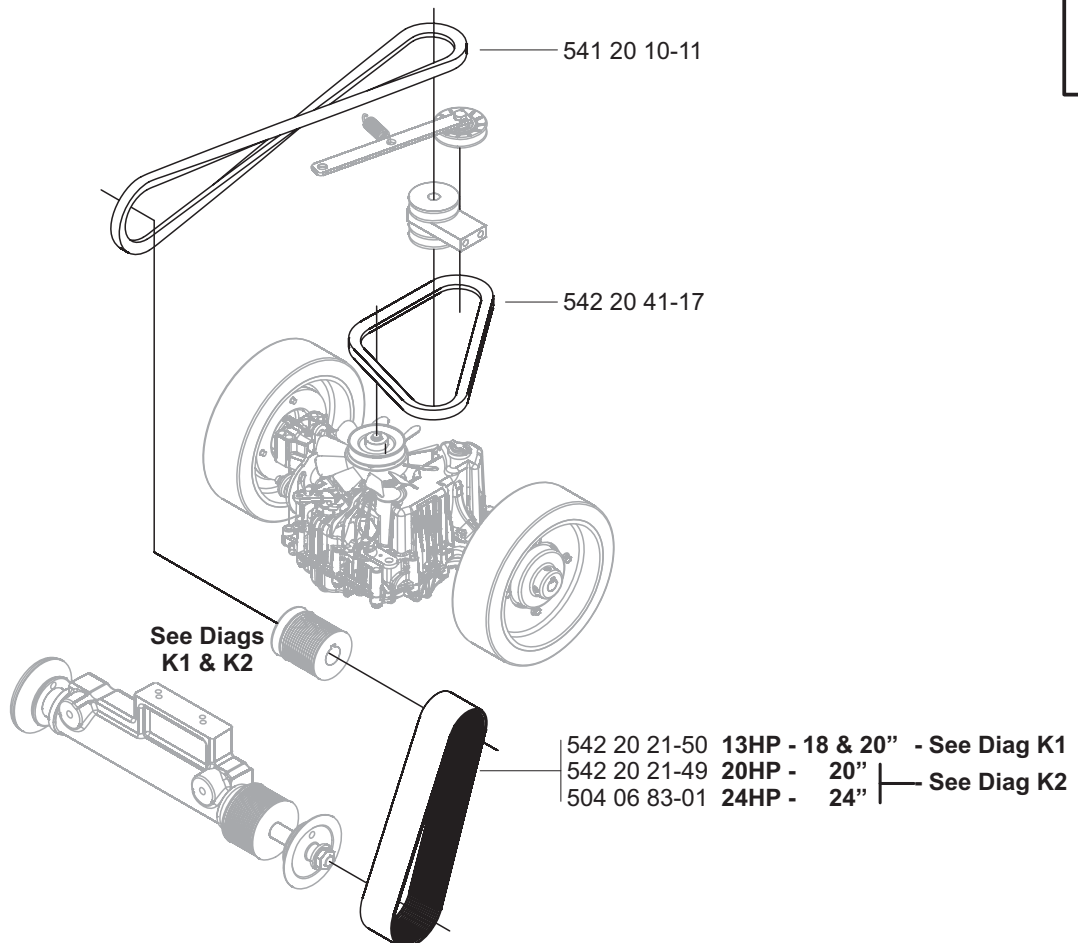
01.25.07



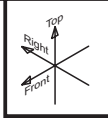
V-Belts



01.22.07

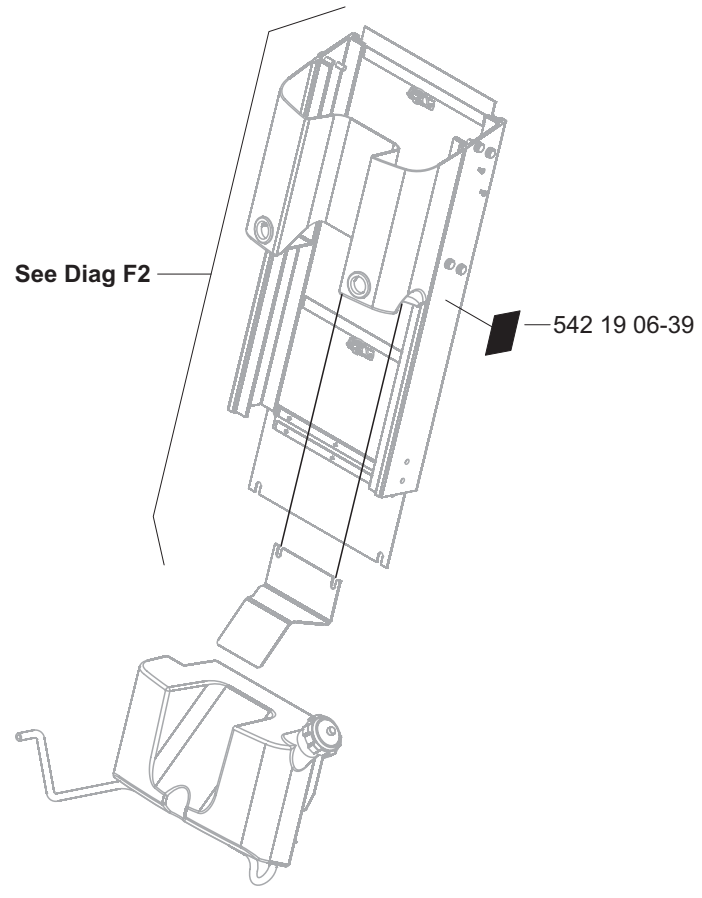
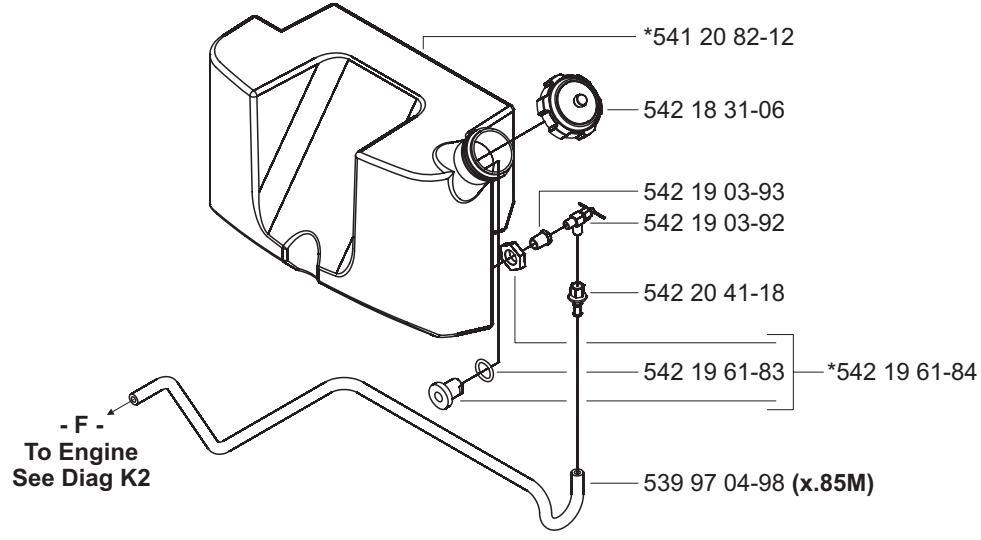


E Fuel Tank - 20 & 24HP Only



01.25.07

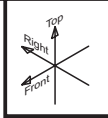
*542 20 41-42 - Compl



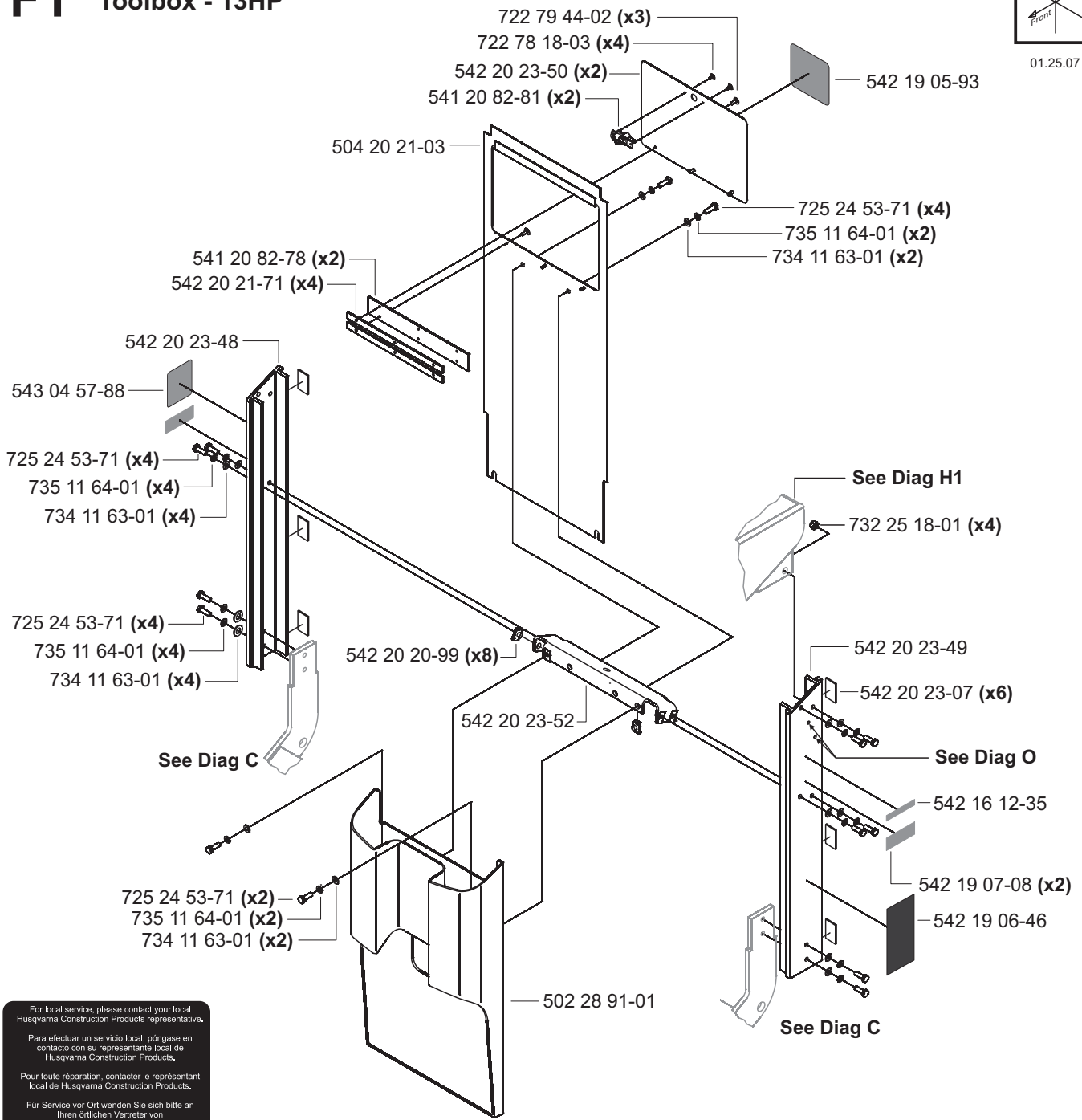
542 19 06-39



F1 Toolbox - 13HP



01.25.07



For local service, please contact your local Husqvarna Construction Products representative.

Para efectuar un servicio local, póngase en contacto con su representante local de Husqvarna Construction Products.

Pour toute réparation, contactez le représentant local de Husqvarna Construction Products.

Für Service vor Ort wenden Sie sich bitte an Ihren örtlichen Vertreter von Husqvarna Construction Products.

Neem voor plaatselijke service contact op met uw plaatselijke vertegenwoordiger van de constructieproducten van Husqvarna.

Per assistenza, rivolgersi al rappresentante di zona della Husqvarna Construction Products.

För service på platsen, kontakta din lokala representant för Husqvarna Construction Products.

Para obter serviço técnico local, contactar o representante da Husqvarna Construction Products local.

Europa / Europe:
 Husqvarna Construction Products
 SE-433 81 Partille, Sweden
 Tel: +46 31 94 90 00
 Fax: +46 31 94 90 50

Asia Pacific:
 Husqvarna Construction Products,
 Australia Pty Ltd
 25-31 Kinross Avenue,
 North Plympton, Adelaide,
 South Australia 5037
 Tel: +61 (0)8 8375 1000
 Fax: +61 (0)8 8371 0990

The Americas:
 Husqvarna Construction Products,
 North America
 17400 West 118th Street,
 Olathe, Kansas 66061 USA
 Toll-Free Telephone: 800-288-5040
 Telephone: 913-928-1300
 Fax: 913-438-7938

542 19 06-46

543 04 57-88



542 16 12-35

PATENT PENDING

542 19 07-08

FS 513

542 19 05-93

⚠ WARNING

Read And Understand Entire Operation Manual Before Operating Machine!

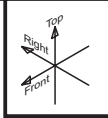
Understand All Warnings, Instructions & Controls Before Operating Machine!

Operation Manual Located Within Machine As Shown Below.

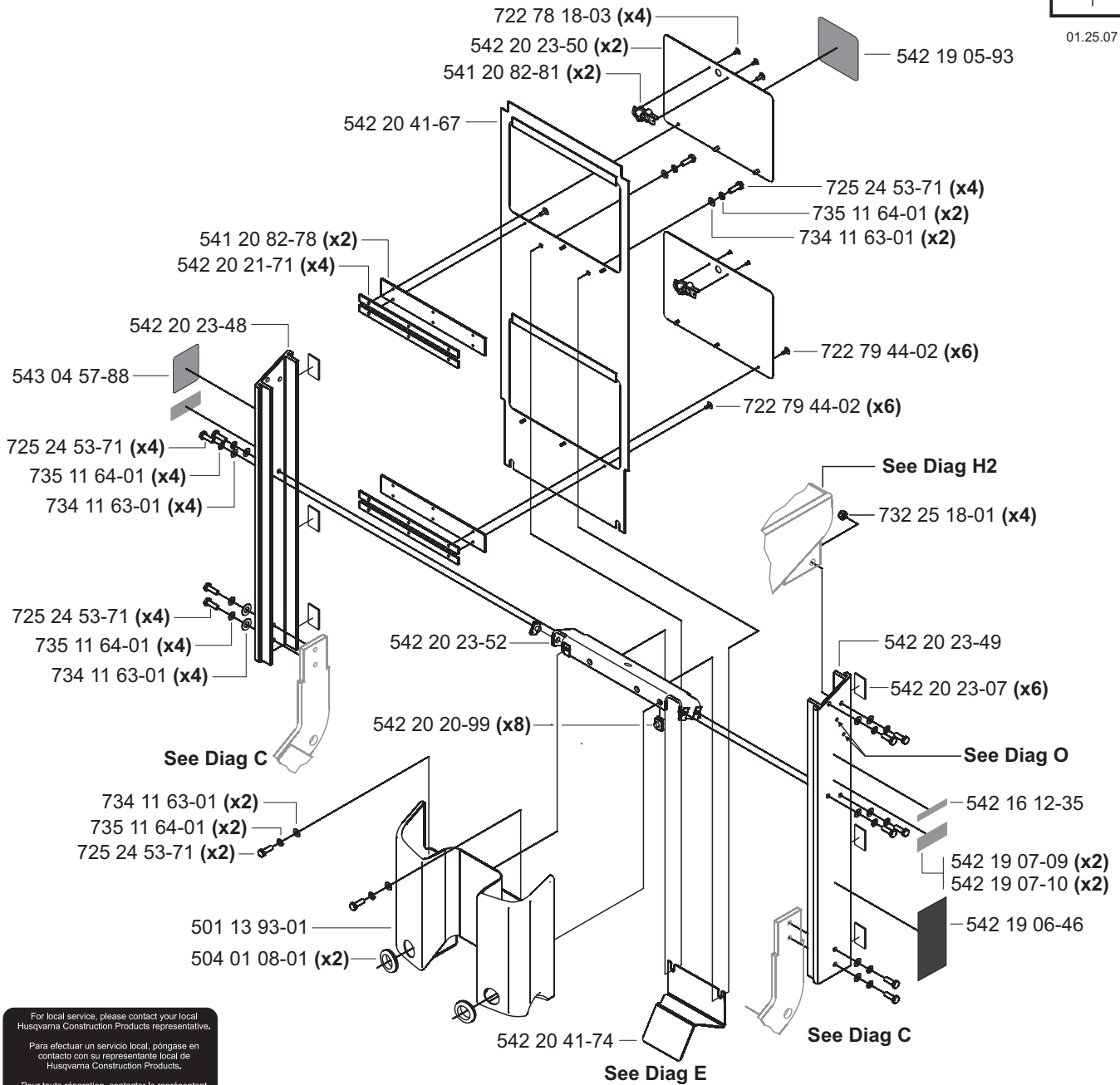
1

2

F2 Toolbox - 20-24HP



01.25.07



For local service, please contact your local Husqvarna Construction Products representative.

Para efectuar un servicio local, póngase en contacto con su representante local de Husqvarna Construction Products.

Pour toute réparation, contacter le représentant local de Husqvarna Construction Products.

Für Service vor Ort wenden Sie sich bitte an Ihren örtlichen Vertreter von Husqvarna Construction Products.

Neem voor plaatselijke service contact op met uw plaatselijke vertegenwoordiger van de constructieproducten van Husqvarna.

Per assistenza, rivolgersi al rappresentante di zona della Husqvarna Construction Products.

För service på platsen, kontakta din lokala representant för Husqvarna Construction Products.

Para obter serviço técnico local, contactar o representante da Husqvarna Construction Products local.

Europa / Europe:
 Husqvarna Construction Products
 SE-433 81 Partille, Sweden
 Tel: +46 31 94 90 00
 Fax: +46 31 94 90 50

Asia Pacific:
 Husqvarna Construction Products, Australia Pty Ltd
 25-31 Kinraid Avenue,
 North Plympton, Adelaide,
 South Australia 5037
 Tel: +61 (0)8 8375 1000
 Fax: +61 (0)8 8371 0990

The Americas:
 Husqvarna Construction Products,
 North America
 17400 West 118th Street,
 Olathe, Kansas 66061 USA
 Toll-Free Telephone: 800-288-5040
 Telephone: 913-928-1300
 Fax: 913-438-7938

542 19 06-46

543 04 57-88



542 16 12-35

PATENT PENDING

542 19 07-09

FS 520

542 19 07-10

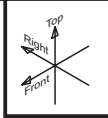
FS 524

542 19 05-93

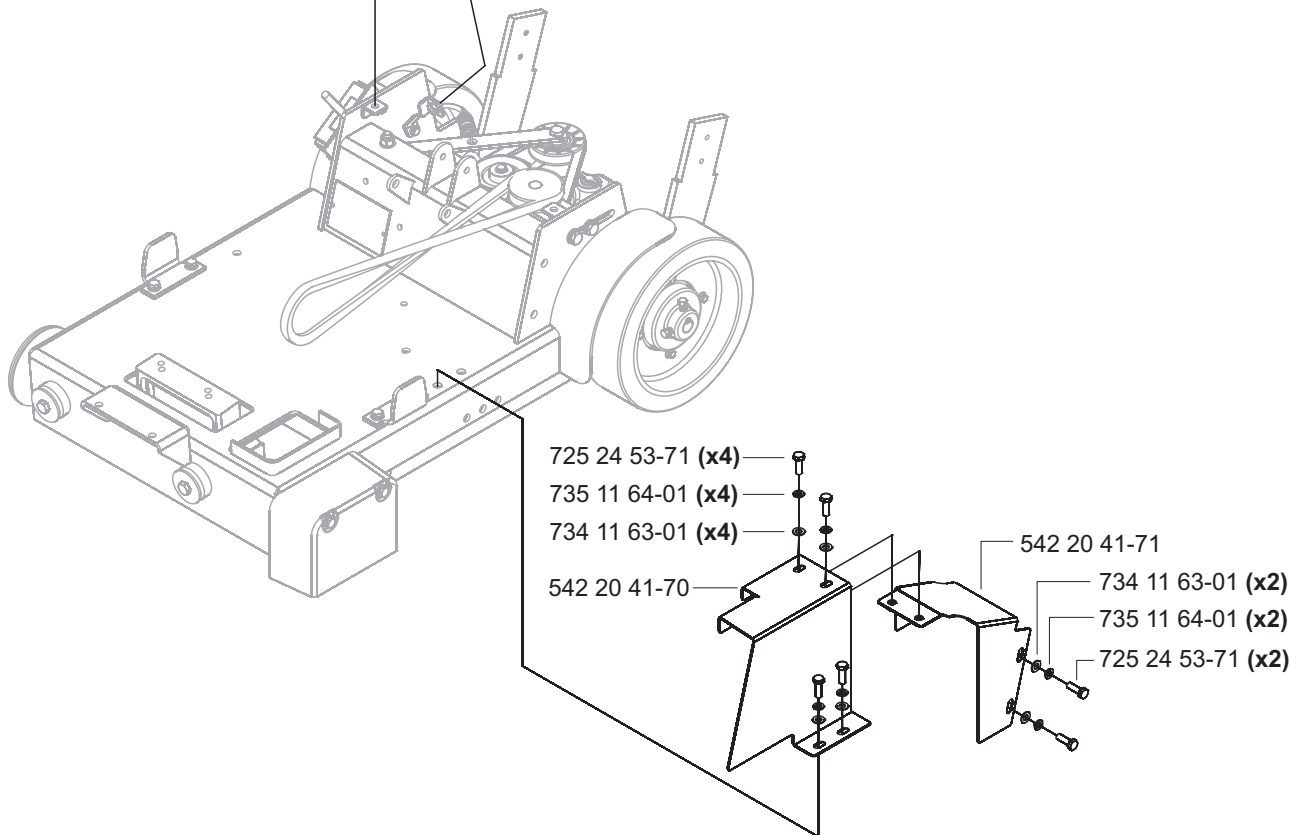
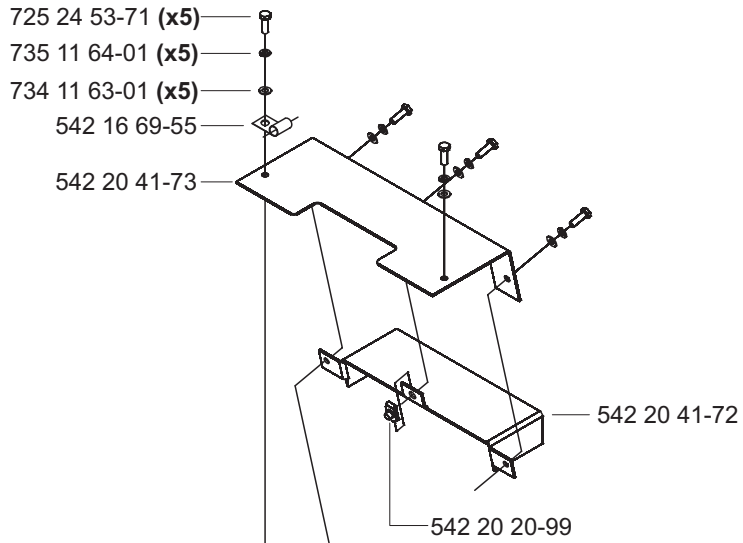
WARNING

Read And Understand Entire Operation Manual Before Operating Machine!
 Understand All Warnings, Instructions & Controls Before Operating Machine!
 Operation Manual Located Within Machine As Shown Below.

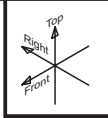
G1 Covers



01.25.07

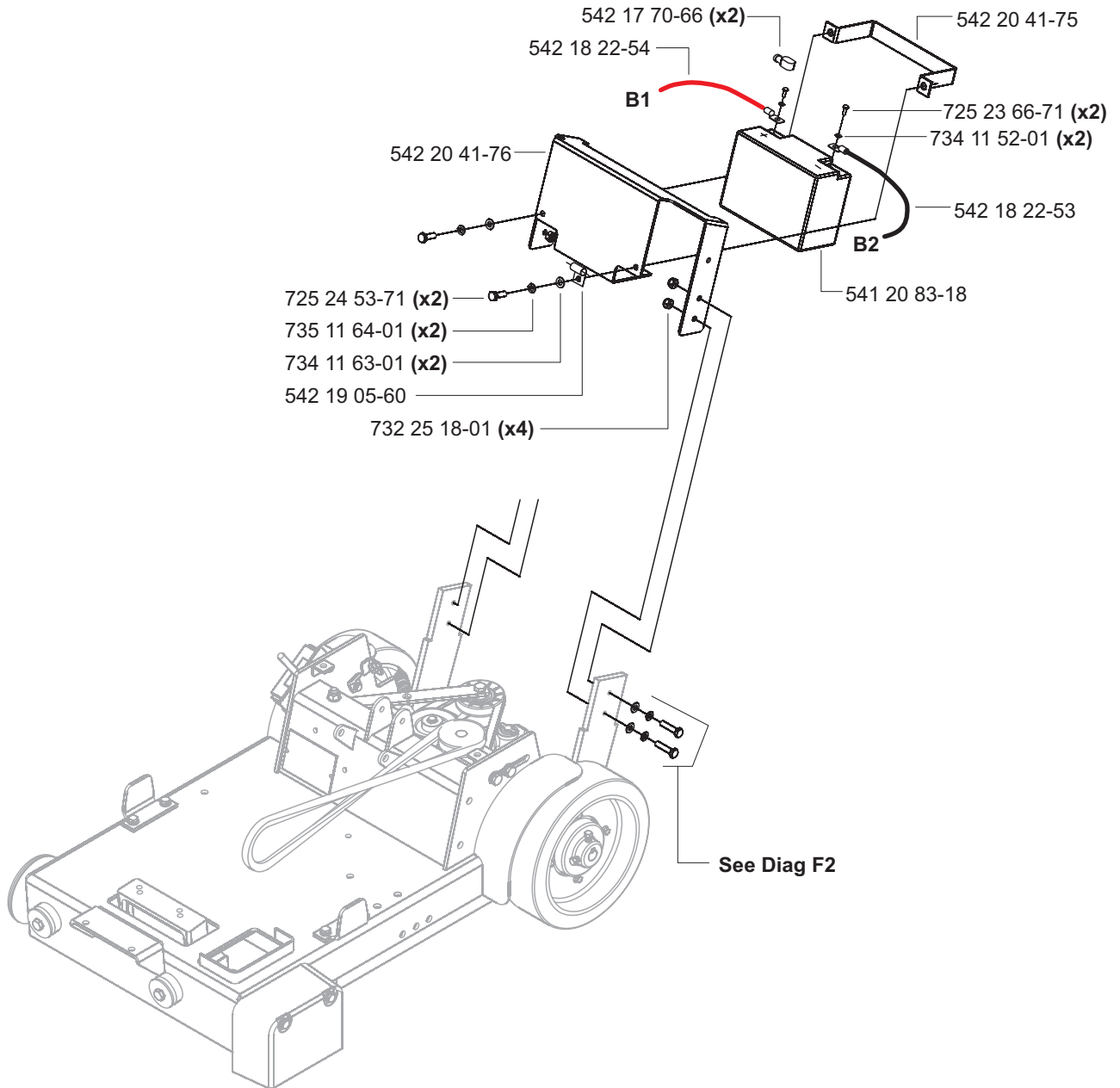


G2 Battery & Covers - 20 & 24HP Only

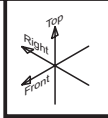


01.25.07

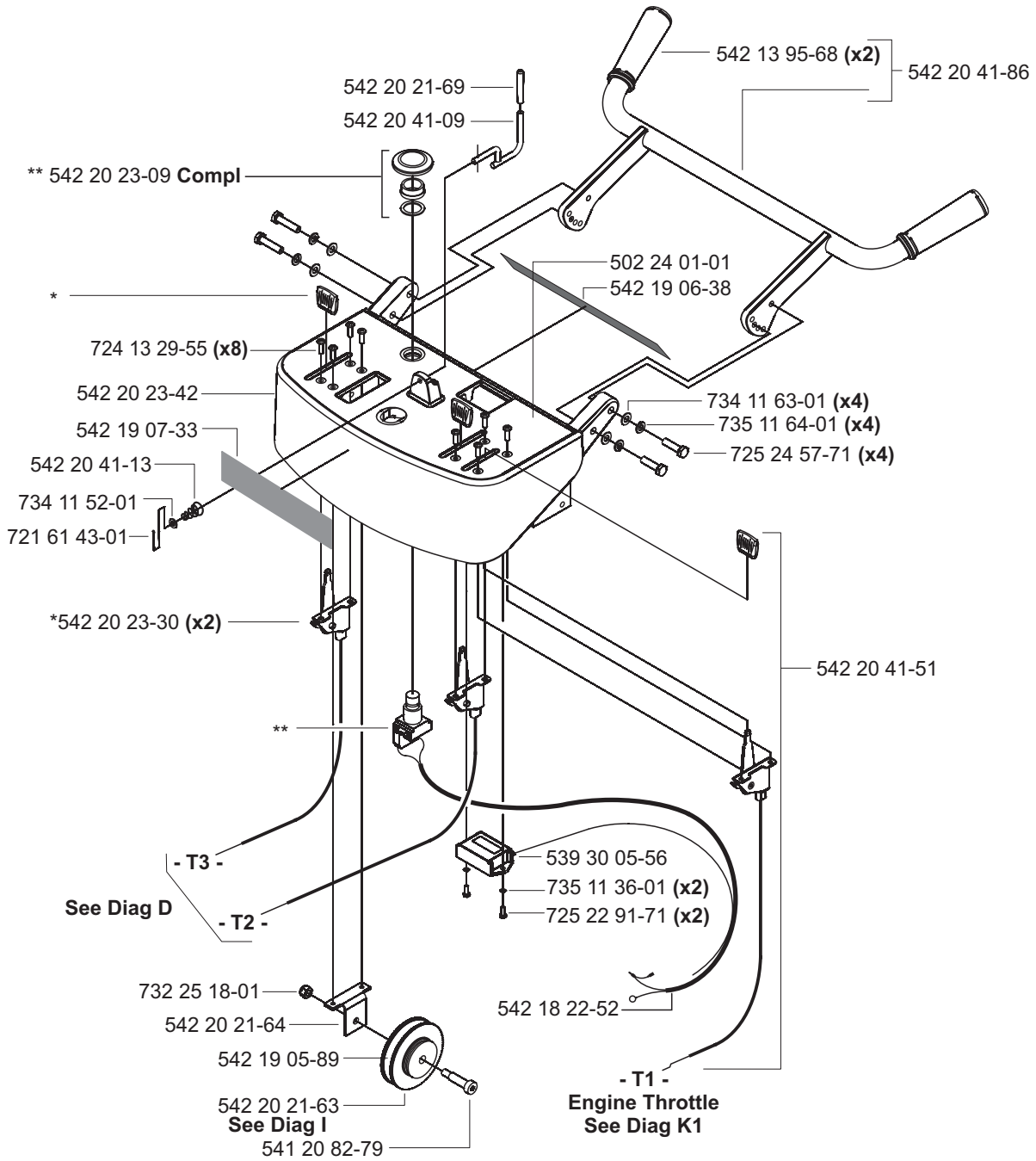
B1 - To Starter Solenoid
B2 - Ground to Engine Block



H1 Control Console - 13 HP

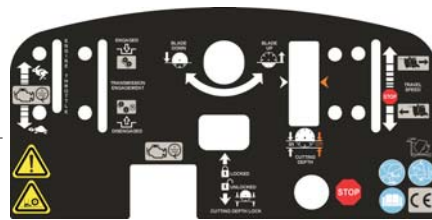


01.26.07



542 19 05-89

502 24 01-01



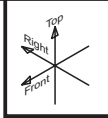
542 19 06-38

542 19 07-33

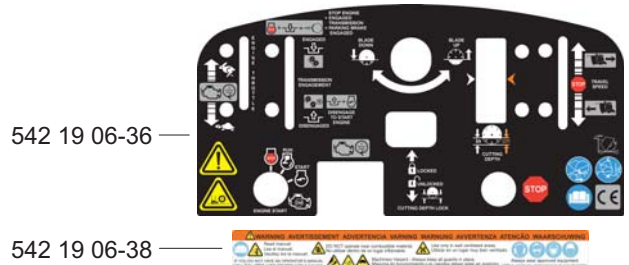
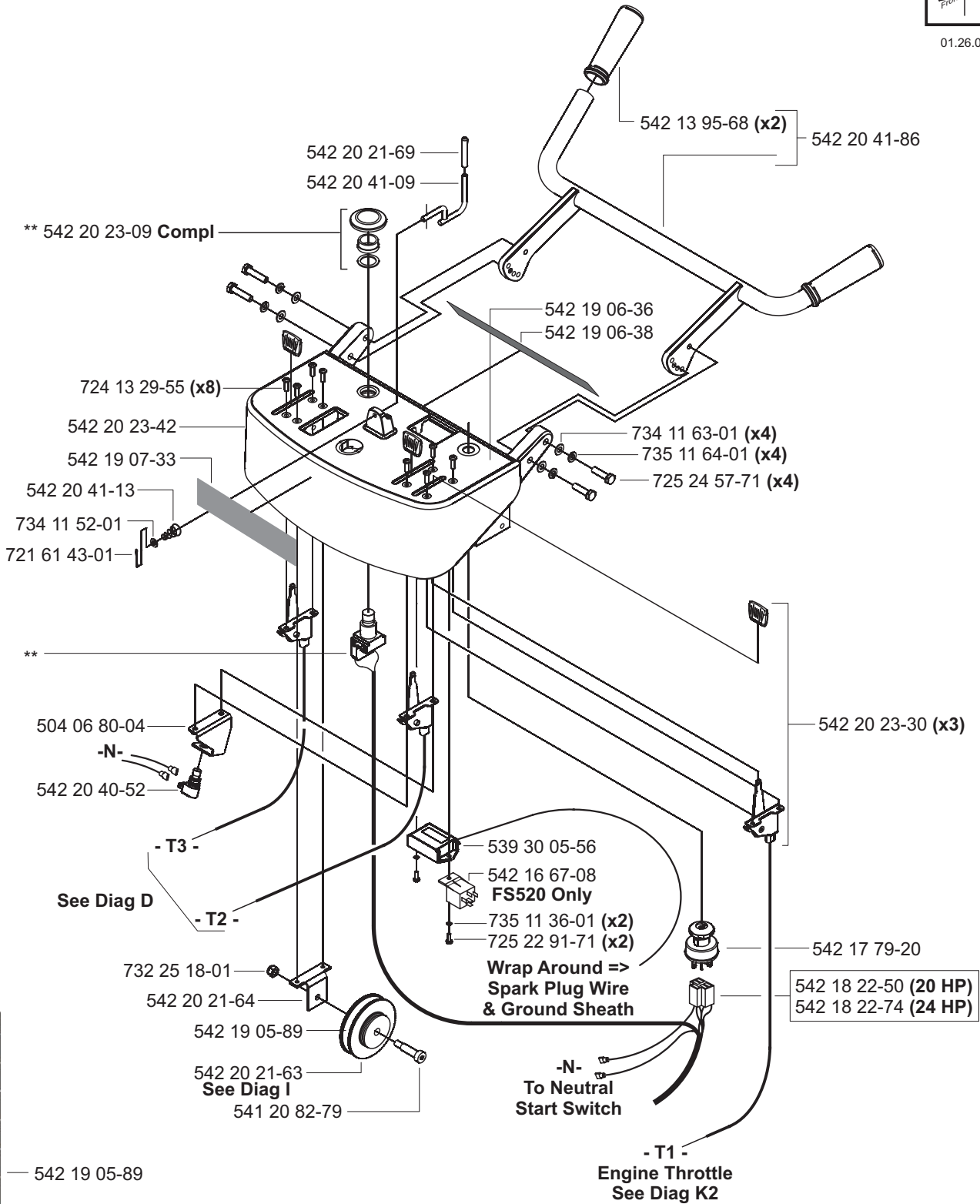
Husqvarna



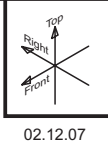
H2 Control Console - 20 HP & 24 HP



01.26.07

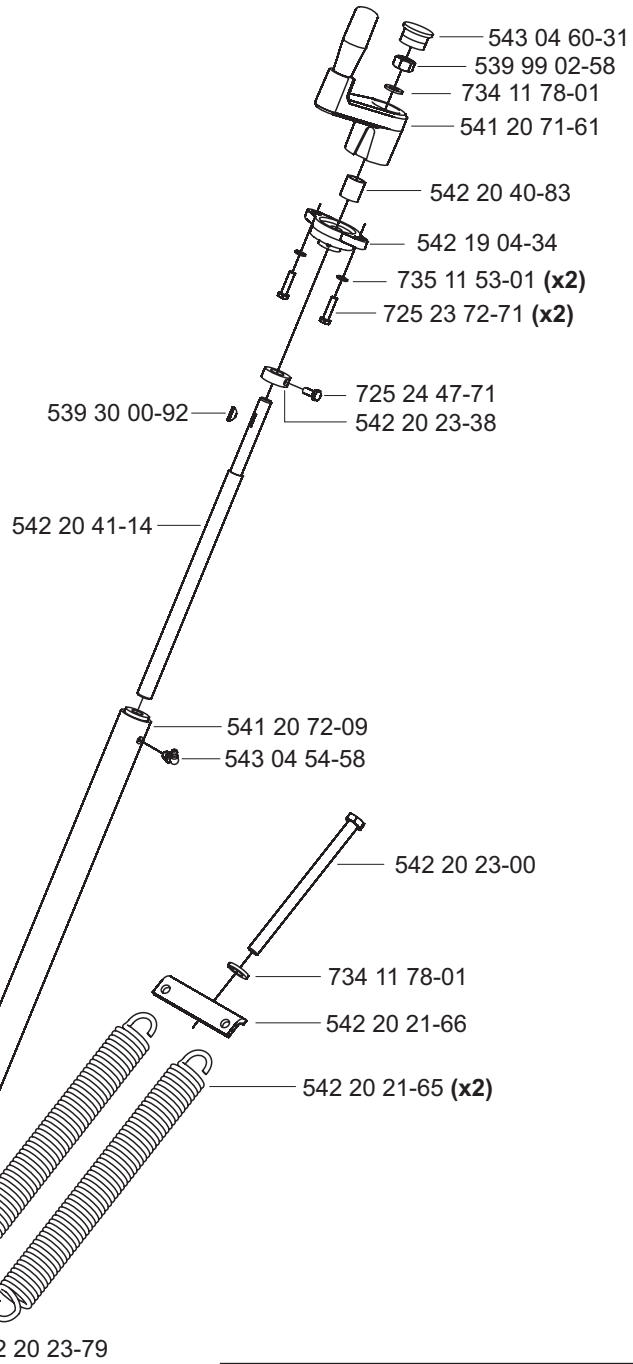
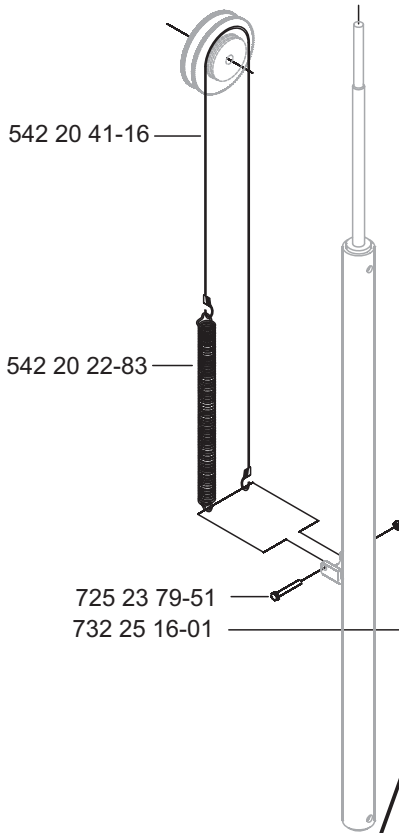


Screw Feed

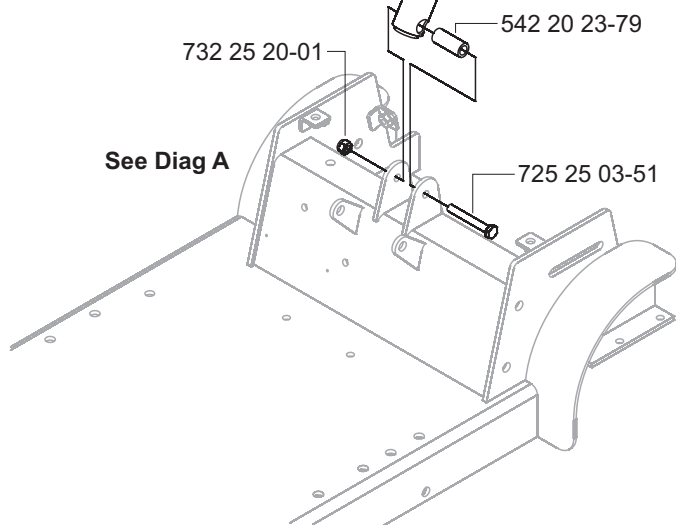


Depth Gauge Spring & Cable

See Diag H1 & H2

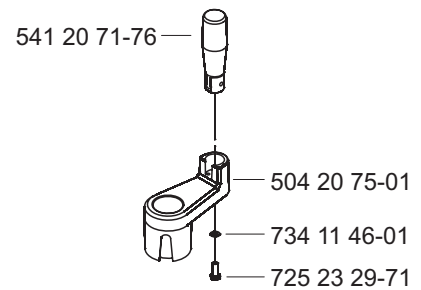


See Diag A

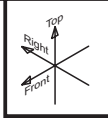


Screw Handle

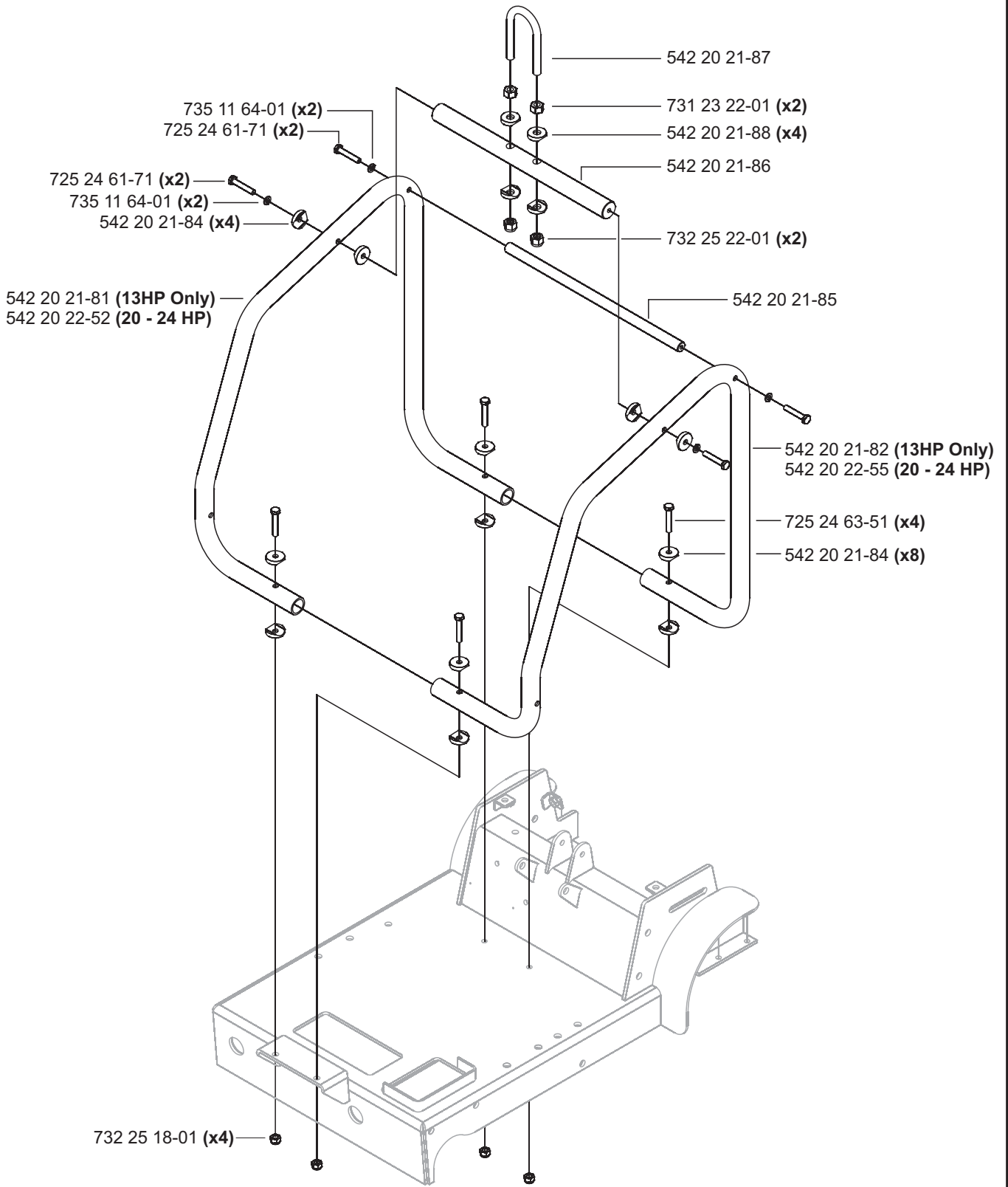
541 20 71-61



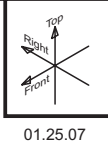
J Engine Cage



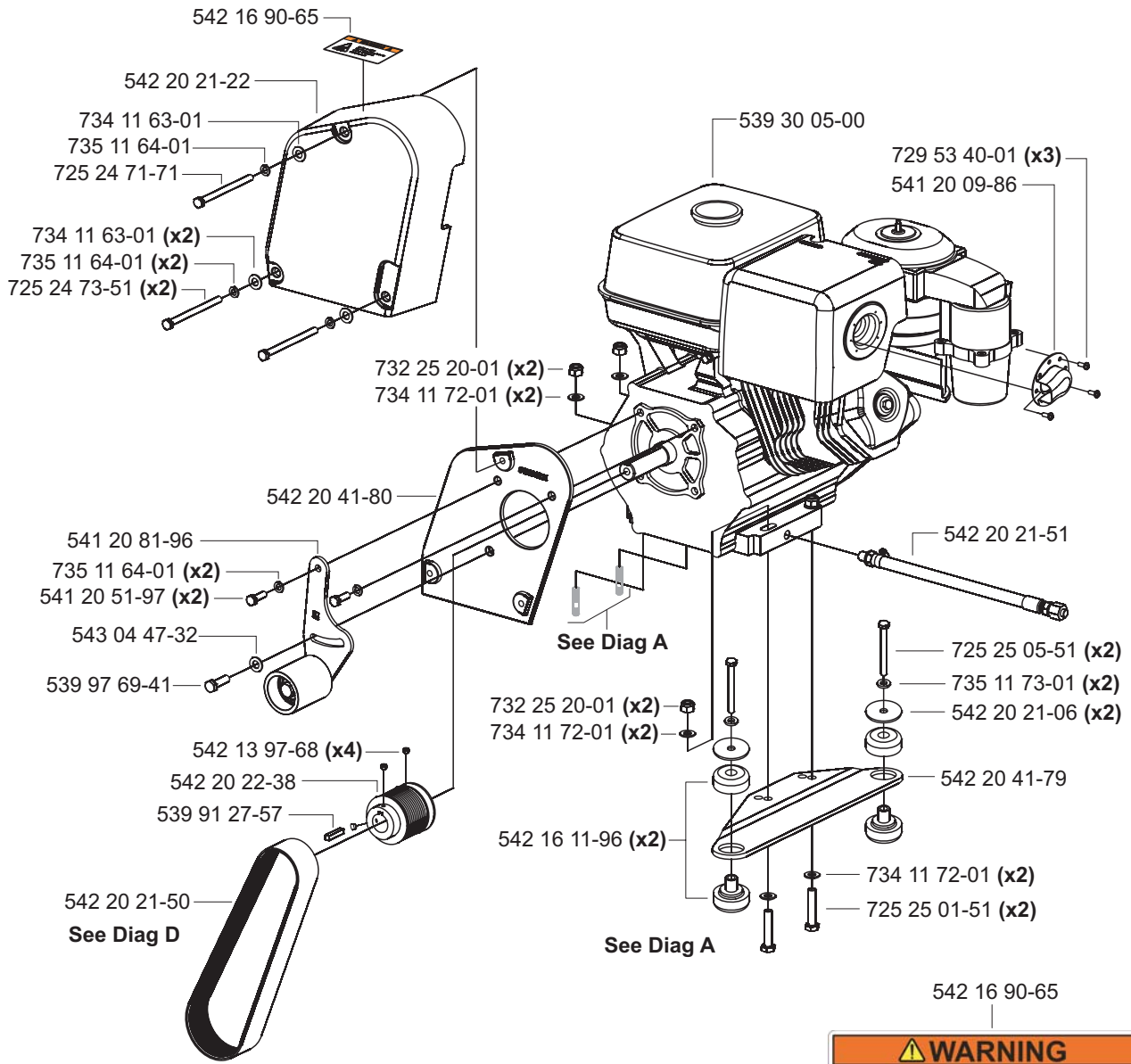
01.26.07



K1 Engine & Idler - 13 HP



01.25.07

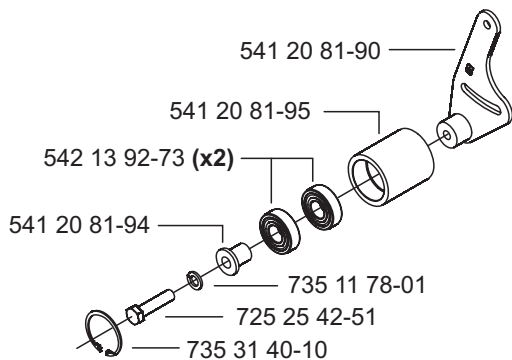


WARNING

Muffler Is HOT!
May Cause Burns And / Or
Ignition Of Material.
Avoid Contact!

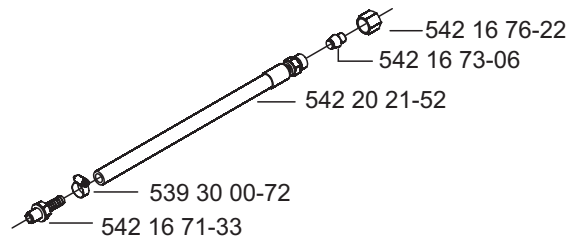
541 20 81-96 Idler - Compl

01.17.07

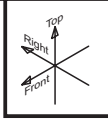


542 20 21-51 Oil Drain - Compl

01.17.07

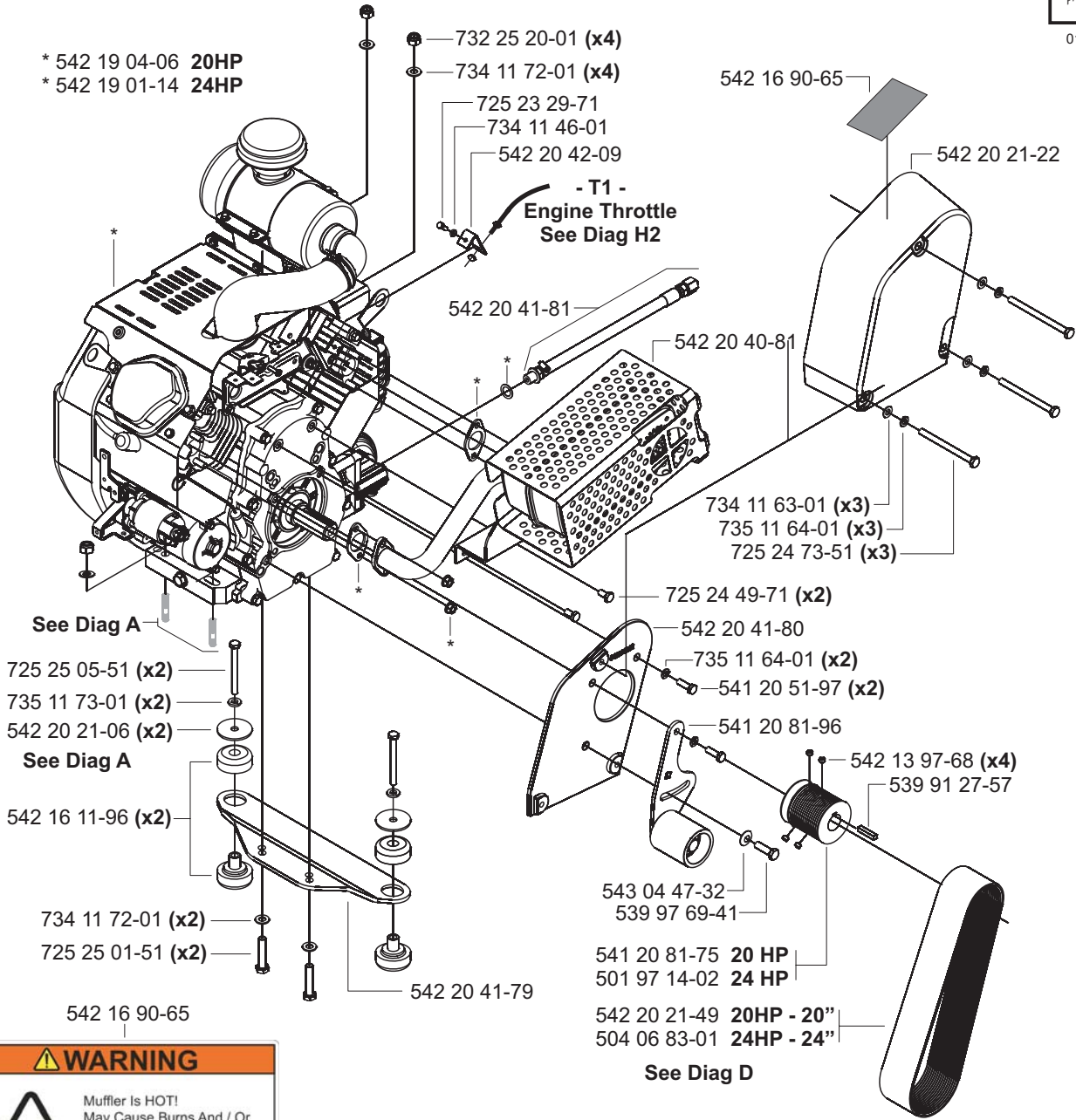


K2 Engine & Idler - 20 & 24 HP



01.26.07

* 542 19 04-06 20HP
* 542 19 01-14 24HP

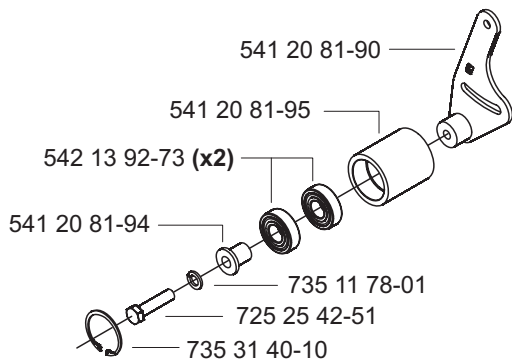


WARNING

Muffler Is HOT!
May Cause Burns And / Or
Ignition Of Material.
Avoid Contact!

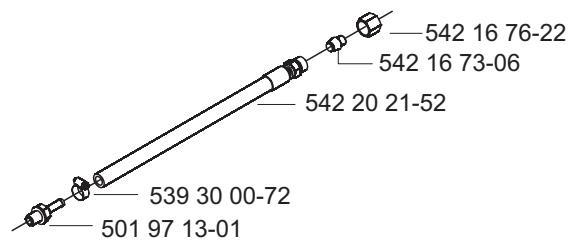
541 20 81-96 Idler - Compl

01.22.07

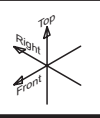


542 20 41-81 Oil Drain - Compl

01.22.07

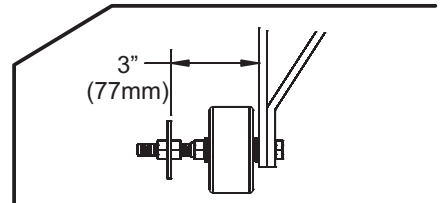
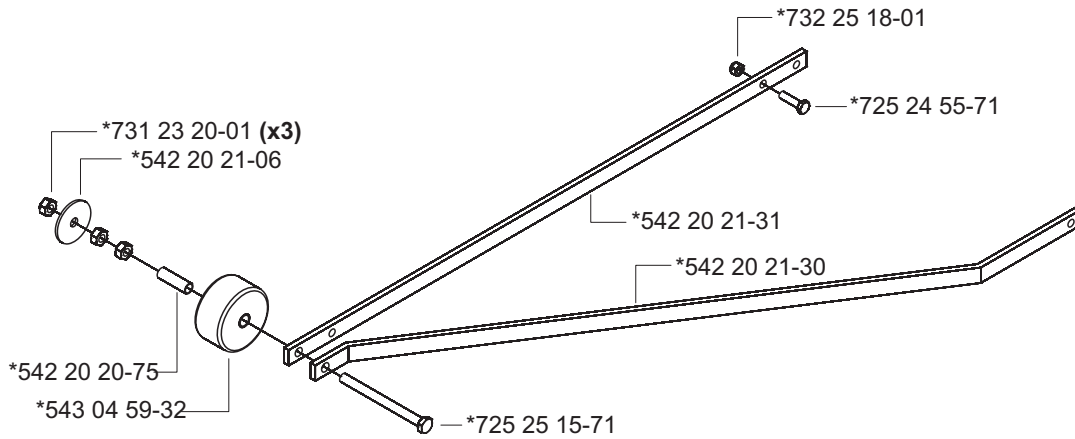


L1 Pointer - ** Single **

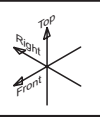


01.17.07

*542 20 20-78 Compl

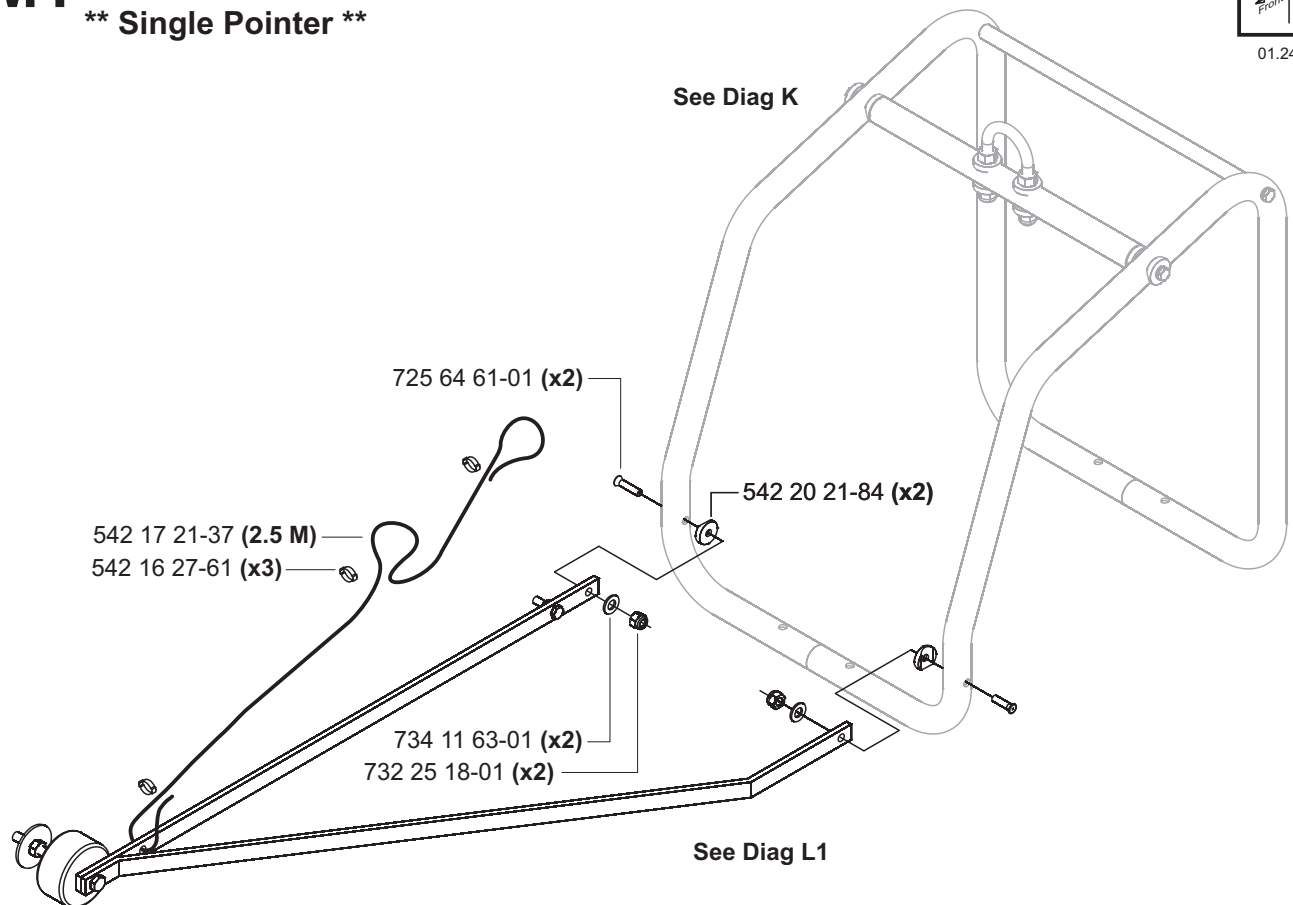


M1 Pointer Attachment ** Single Pointer **

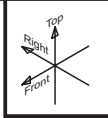


01.24.07

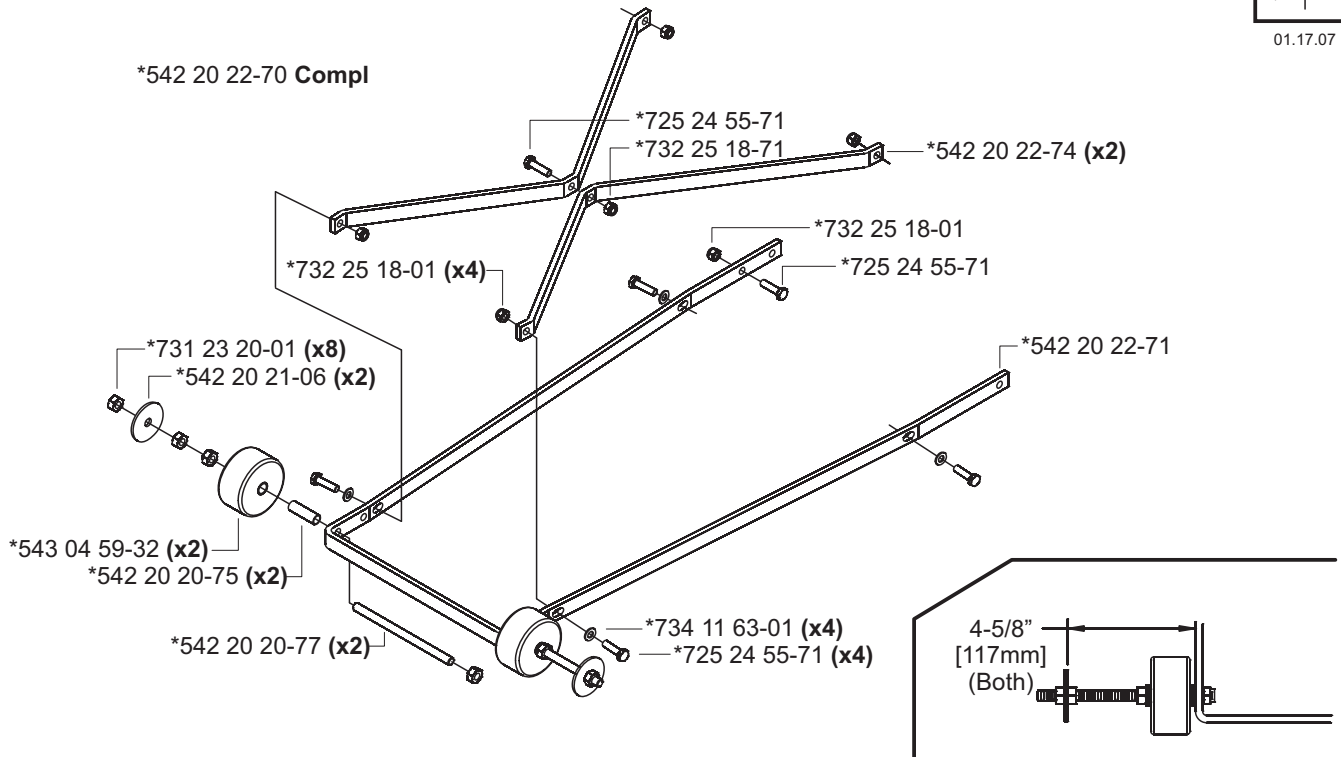
See Diag K



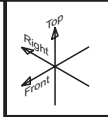
L2 Pointer - ** Dual **



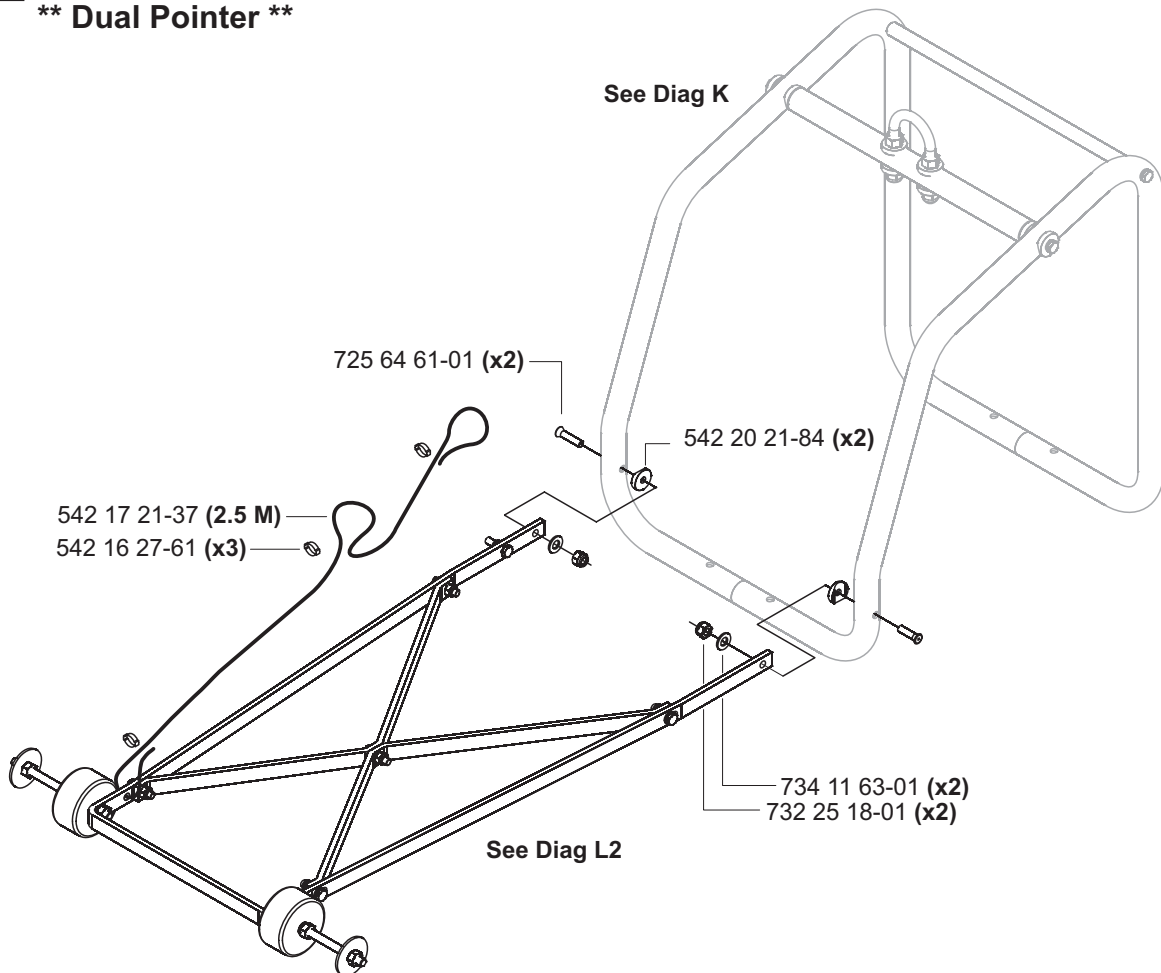
01.17.07



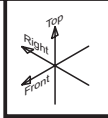
M2 Pointer Attachment ** Dual Pointer **



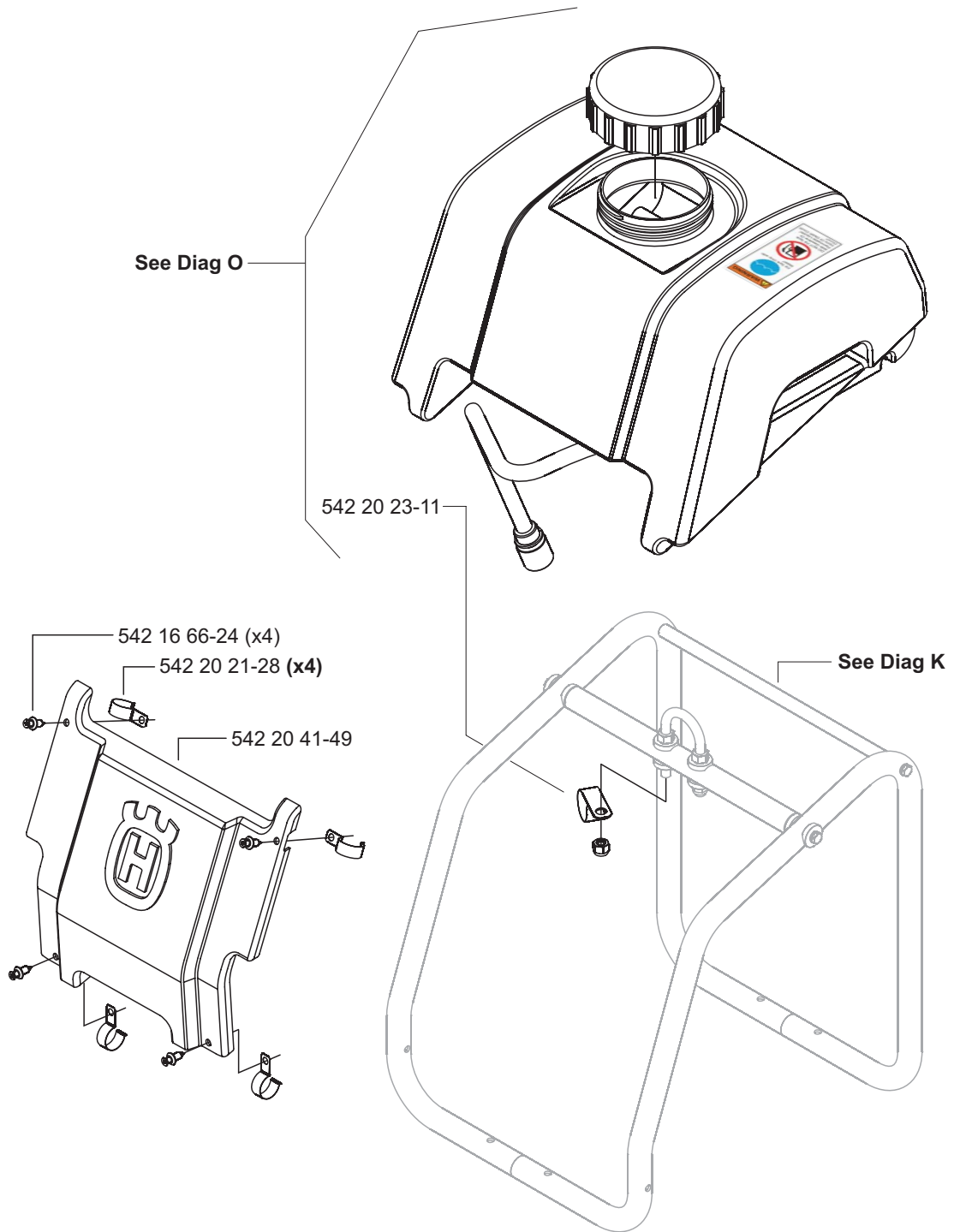
01.24.07



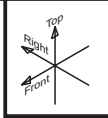
N1 Water Tank & Nose Piece- 13HP



01.24.07

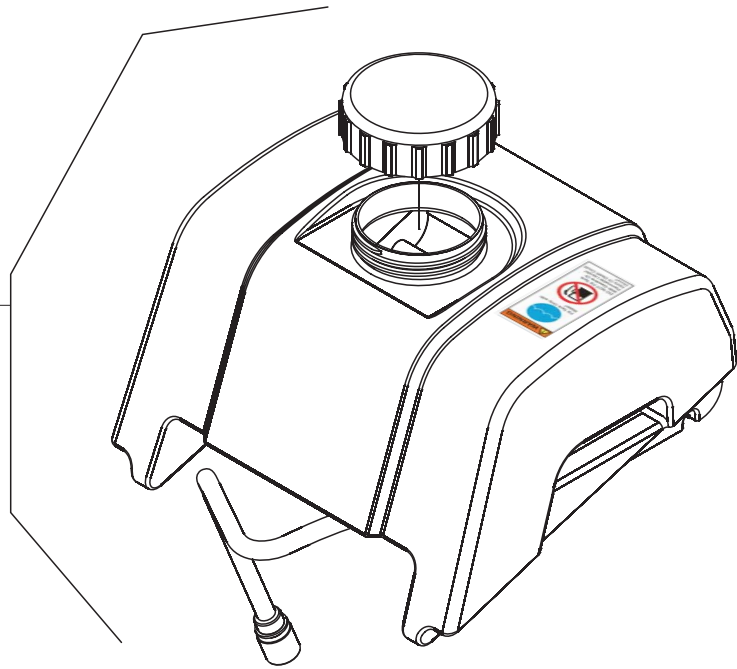


N2 Water Tank & Nose Piece - 20 & 24HP

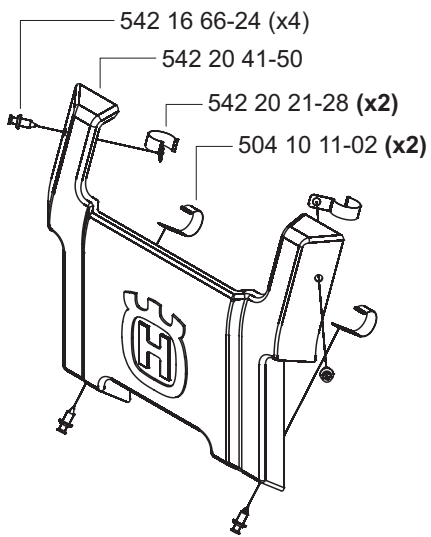
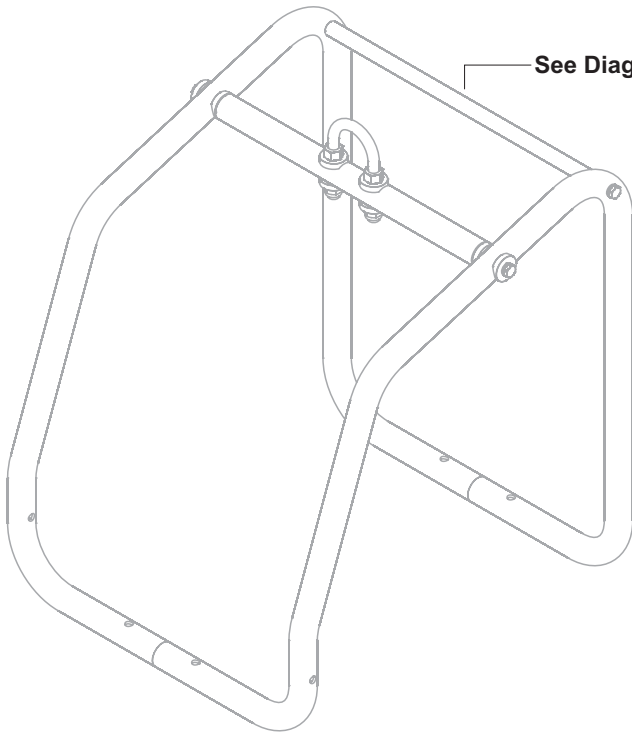


01.24.07

See Diag O

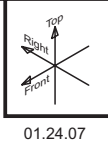


See Diag K

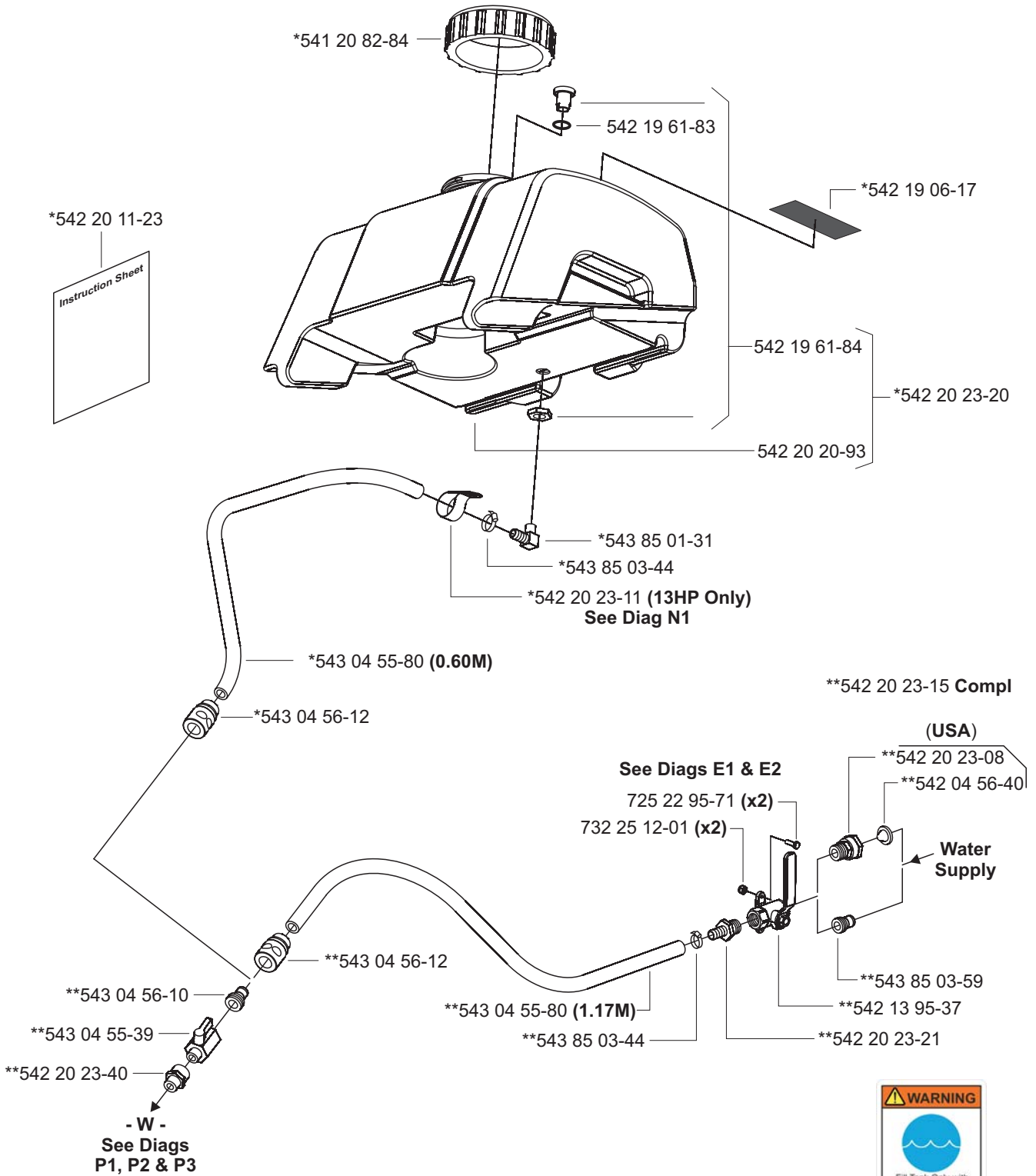


Water System - 13 & 20-24HP

* 541 20 82-86 Water Tank - Compl



01.24.07



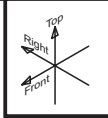
542 19 06-17



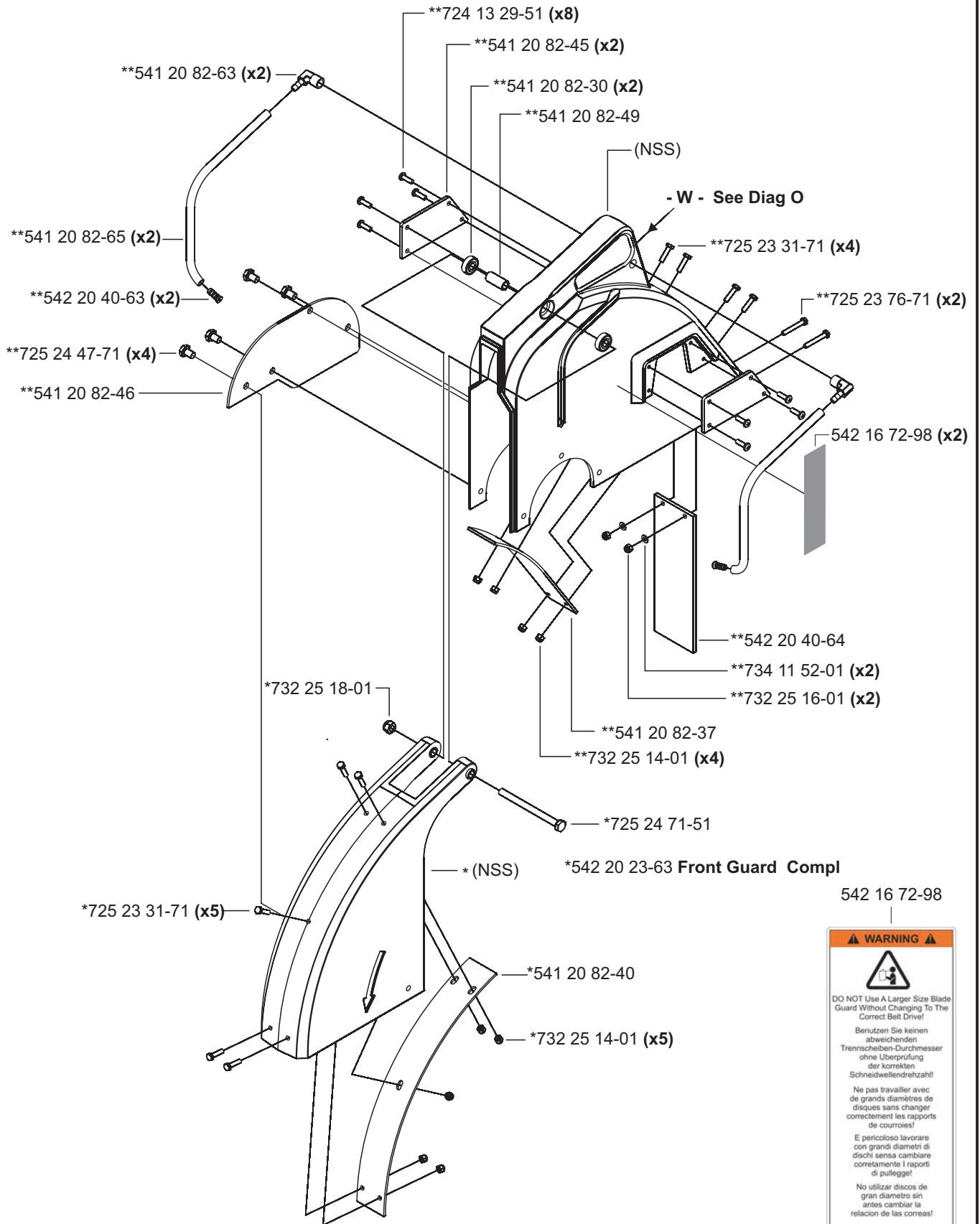
P1 Blade Guard - 18" [450mm]

542 20 23-60 Compl

**542 20 23-62 Rear Guard Compl



01.23.07



(NSS) - Not Sold Separately

WARNING

DO NOT Use A Larger Size Blade Guard Without Changing To The Correct Belt Drive!

Benutzen Sie keinen abweichenden Treibscheiben-Durchmesser ohne Überprüfung der korrekten Schneidwellendrehzahl!

Ne pas travailler avec de grands diamètres de disques sans changer correctement les rapports de courroies!

E pericoloso lavorare con grandi diametri di dischi senza cambiare correttamente i rapporti di pulegge!

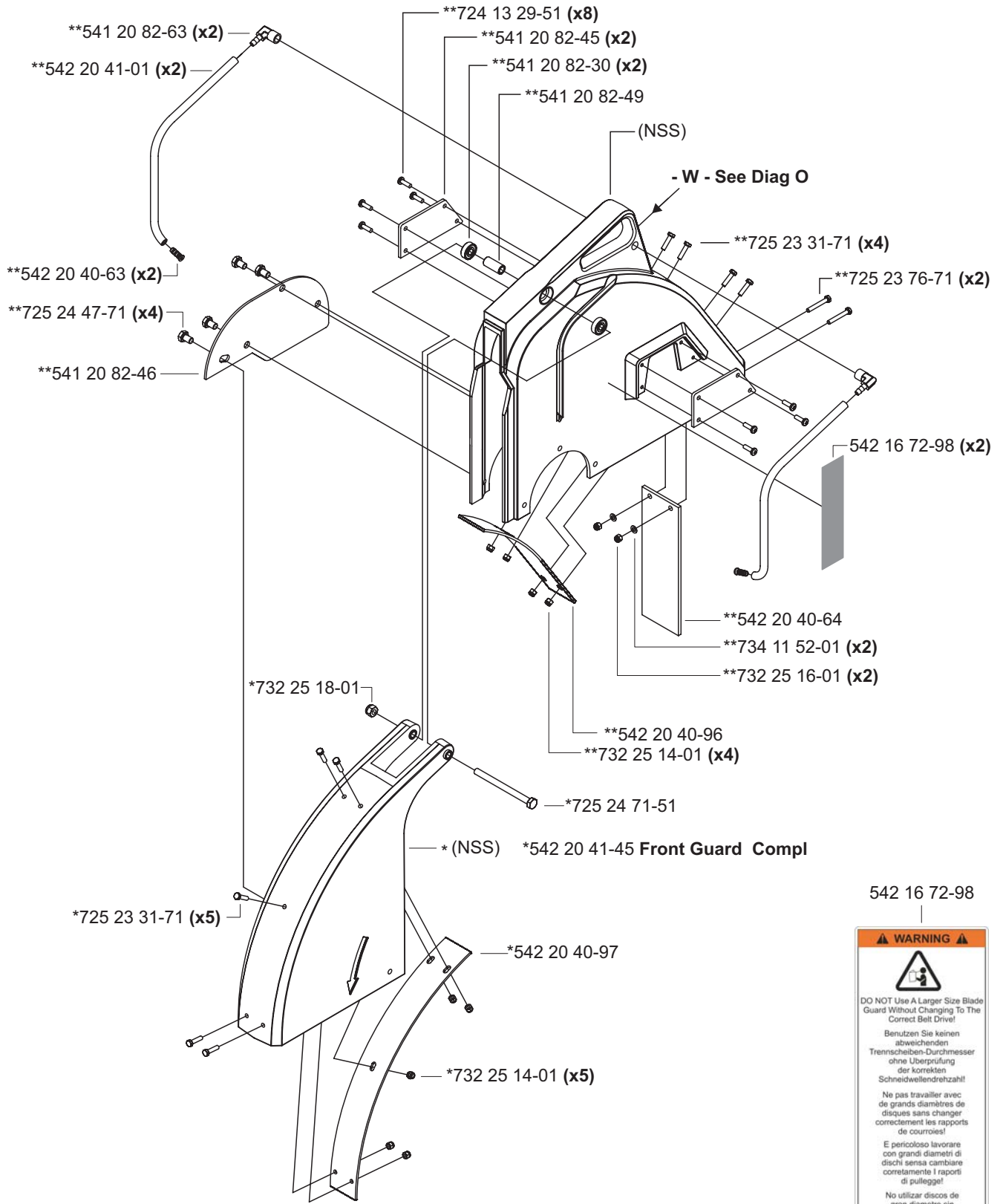
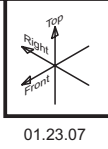
No utilizar discos de gran diámetro sin antes cambiar la relación de las correas!

Gebruik geen zaag-kappen van grotere afmetingen zonder een juiste afstelling aan de riemaandrijving!

P2 Blade Guard - 20" [500mm]

542 20 40-89 Compl

**542 20 41-44 Rear Guard Compl



(NSS) - Not Sold Separately

542 16 72-98

WARNING

DO NOT Use A Larger Size Blade Guard Without Changing To The Correct Belt Drive!

Benutzen Sie keinen abweichenden Treibschleiben-Durchmesser ohne Überprüfung der korrekten Schneidwellendrehzahl!

Ne pas travailler avec de grands diamètres de disques sans changer correctement les rapports de courroies!

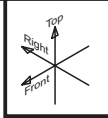
E pericoloso lavorare con grandi diametri di dischi senza cambiare correttamente i rapporti di pulleggi!

No utilizar discos de gran diámetro sin antes cambiar la relación de las correas!

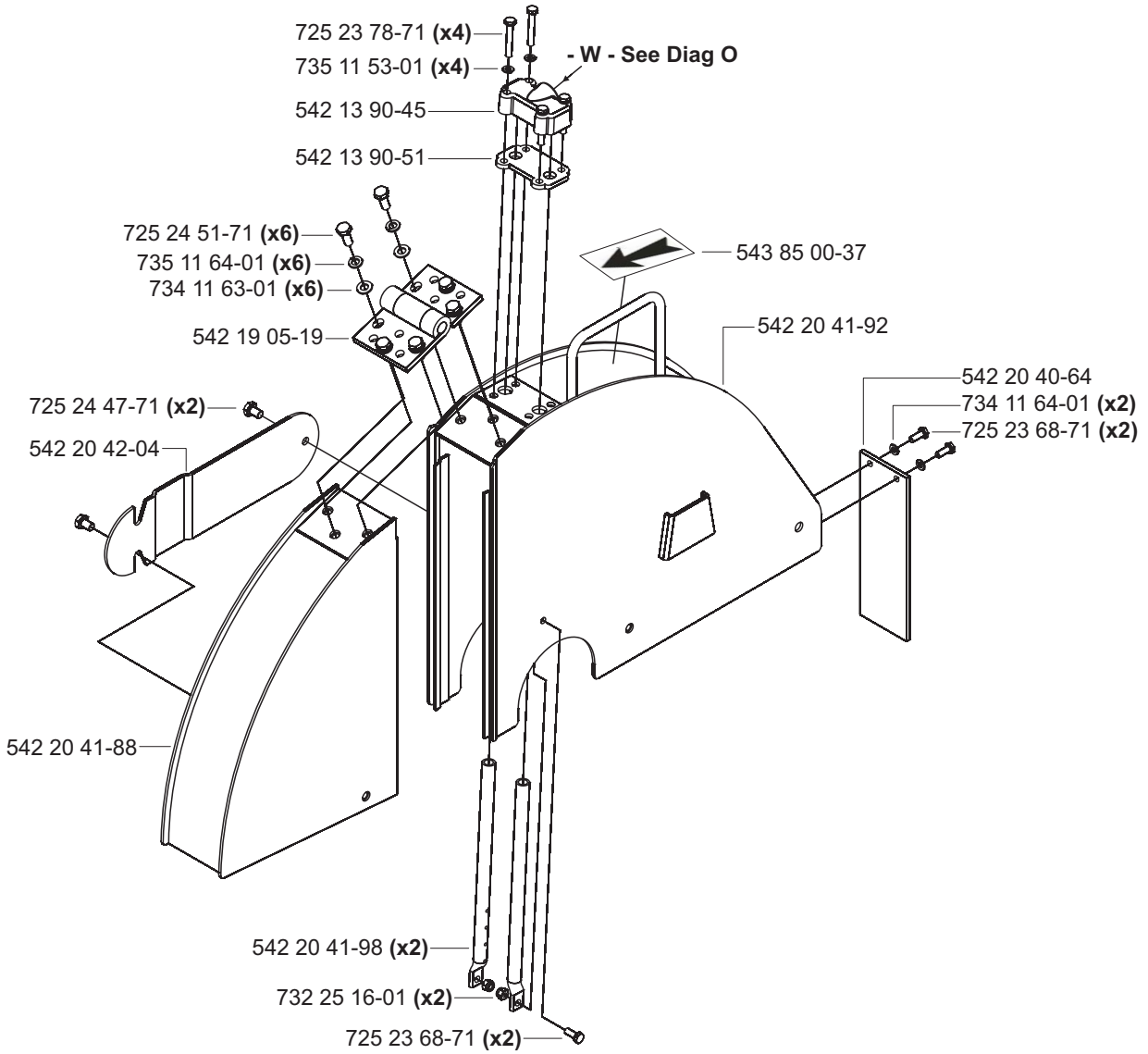
Gebruik geen zaag-kappen van grotere afmetingen zonder een juiste afstelling aan de riemaandrijving!

P3 Blade Guard - 24" [600mm]

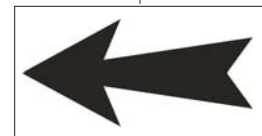
542 20 41-87 Compl



01.26.07



543 85 00-37



(NSS) - Not Sold Separately

Husqvarna Construction Products, North America

Corporate Office

117400 West 119th Street, Olathe, Kansas 66061 USA
Corporate Office: 913-928-1000
Corp. Office Fax: 913-438-7951

www.husqvarna.com

Europa / Europe:

Husqvarna Construction Products

SE-433 81 Partille, Sweden
Tel: +46 31 94 90 00
Fax: +46 31 94 90 50

Asia Pacific:

Husqvarna Construction Products, Australia Pty Ltd

25-31 Kinkaid Avenue,
North Plympton, Alelaide,
South Australia 5037
Tel:+61 (0)8 8375 1000
Fax:+61 (0)8 8371 0900

The Americas:

Husqvarna Construction Products, North America

17400 West 119th Street, Olathe, Kansas 66061 USA
Toll-Free Telephone: 800-288-5040, Telephone: 913-928-1300
Fax: 913-438-7938



Cutting, especially when DRY cutting, generates dust that comes from the material being cut, which frequently contains silica. Silica is a basic component of sand, quartz, brick clay, granite and numerous other minerals and rocks. Exposure to excessive amount of such dust can cause:

- Respiratory diseases (affecting your ability to breath), including chronic bronchitis, silicosis and pulmonary fibrosis from exposure to silica. These diseases may be fatal;
- Skin irritation and rash; and
- Cancer according to NTP* and IARC*
* National Toxicology Program / International Agency for Research on Cancer

Take precautionary steps

- Avoid inhalation of and skin contact with dust, mist and fumes;
- Wet cut when feasible, to minimize dust;
- Wear and ensure that all bystanders wear appropriate respiratory protection such as dust masks designed to filter out microscopic particles. (See OSHA 29 CFR Part 1910.1200)

California Prop 65 Warning:

Use of this product can cause exposure to materials known to the State of California to cause cancer and/or birth defects or other reproductive harm.



Printed in China