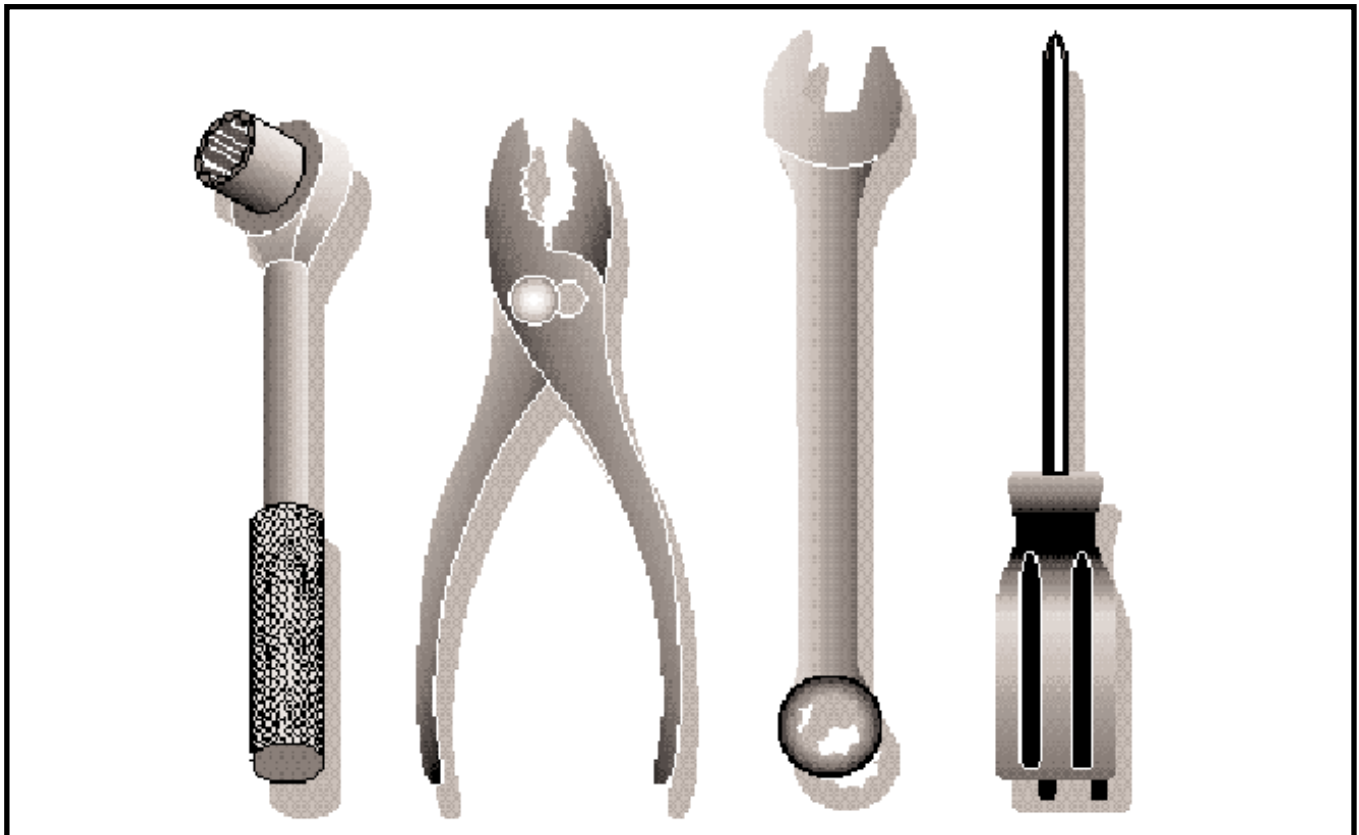


Ride Mower

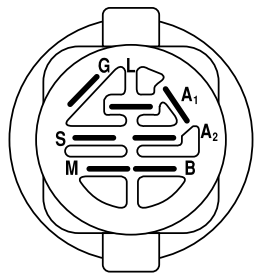
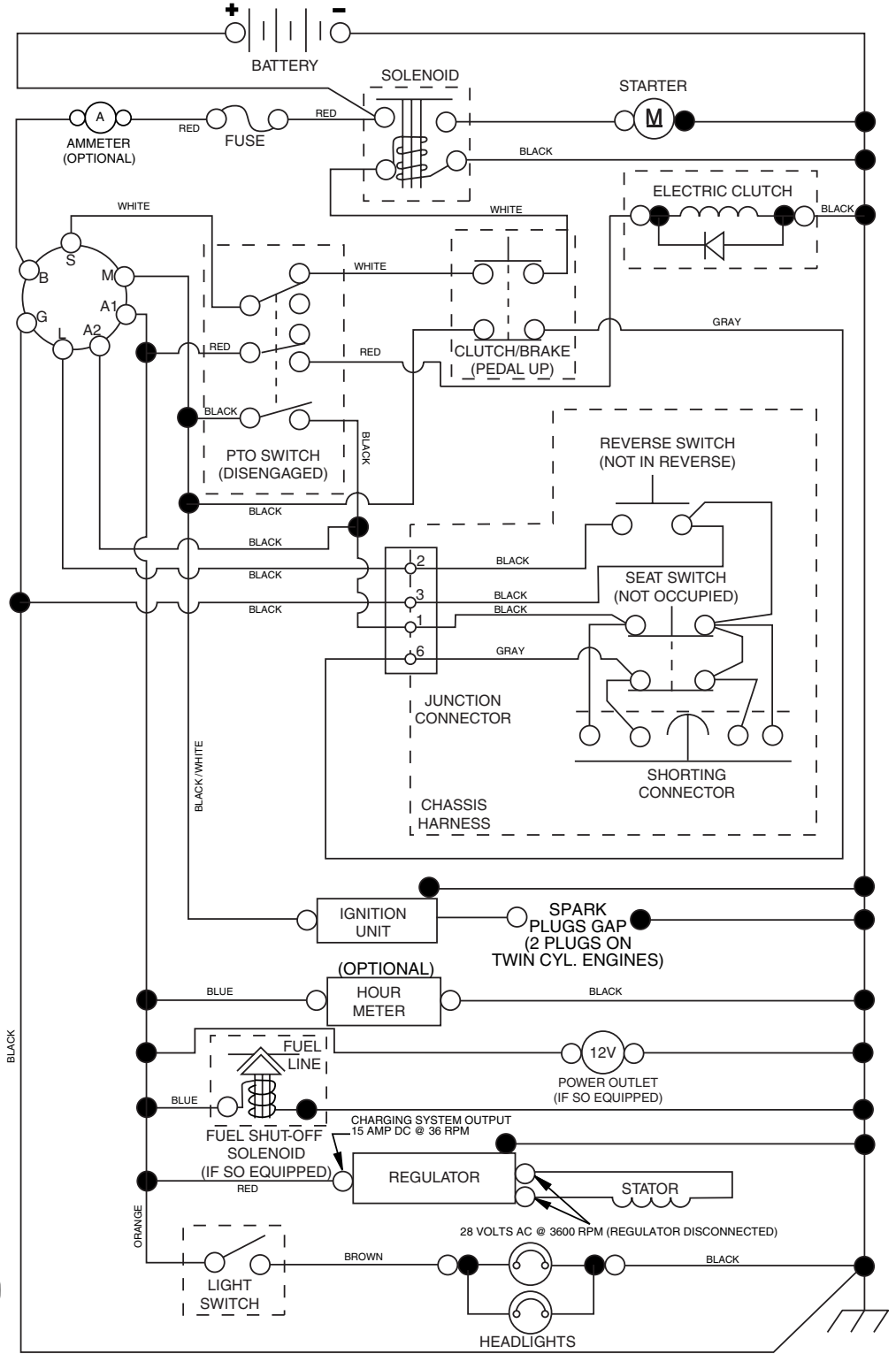
YTH20F42T

(917.279240), 960430005



TRACTOR - MODEL NO. 917.279240 (YTH20F42T), PRODUCT NO. 960 43 00-05 SCHEMATIC

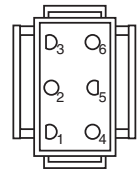
02928-194276_Regulated-Tex



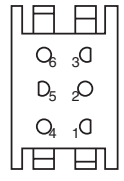
IGNITION SWITCH

POSITION	CIRCUIT	"MAKE"
OFF	M+G+A1	
RUN/OVERRIDE	B+A1	
RUN	B+A1	L+A2
START	B + S + A1	

02928



CHASSIS HARNESS CONNECTOR (MATING SIDE)



DASH HARNESS CONNECTOR (MATING SIDE)

WIRING INSULATED CLIPS

NOTE: IF WIRING INSULATED CLIPS WERE REMOVED FOR SERVICING OF UNIT, THEY SHOULD BE REPLACED TO PROPERLY SECURE YOUR WIRING.

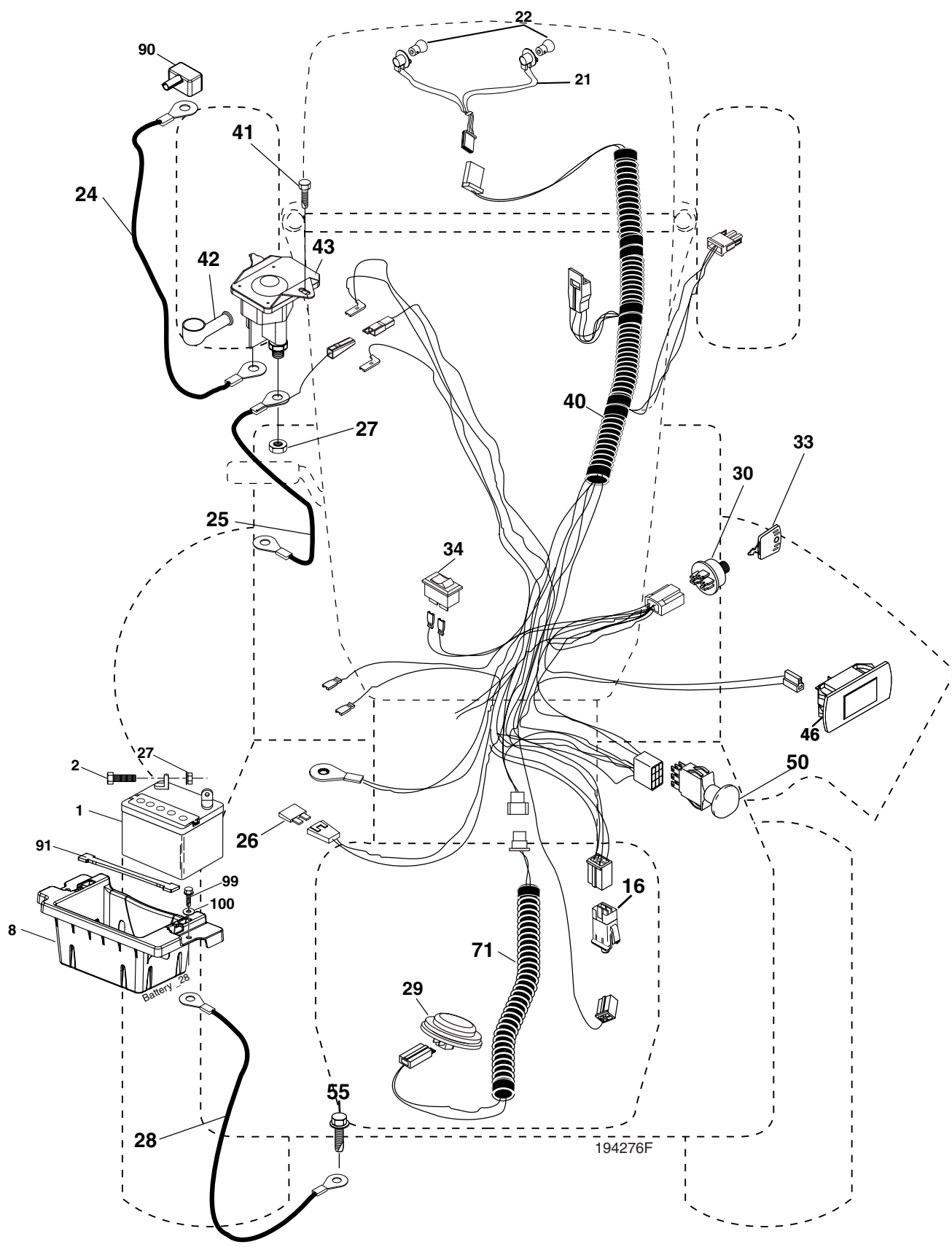


NON-REMOVABLE CONNECTIONS



REMOVABLE CONNECTIONS

**TRACTOR - MODEL NO. 917.279240 (YTH20F42T), PRODUCT NO. 960 43 00-05
ELECTRICAL**

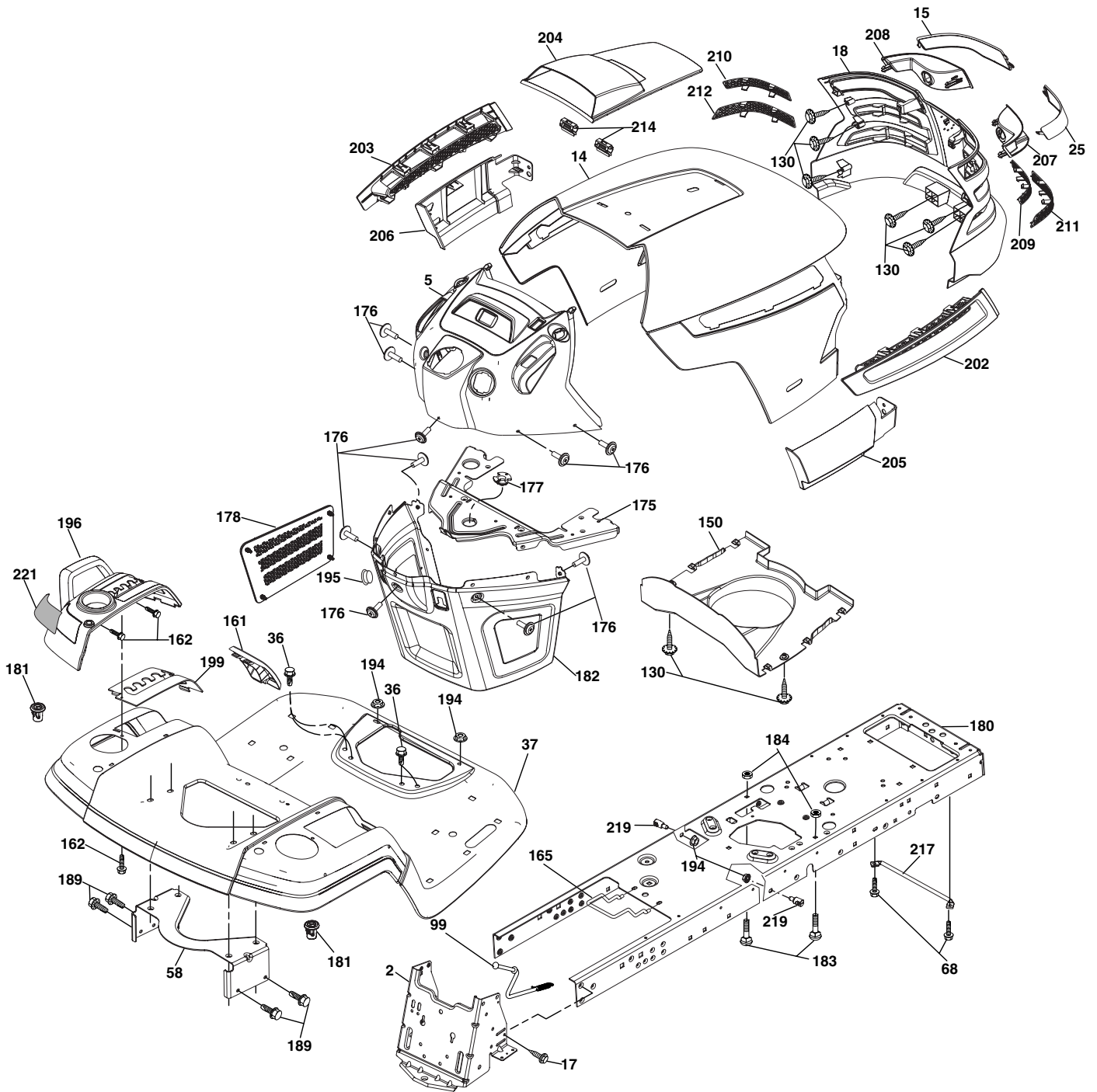


**TRACTOR - MODEL NO. 917.279240 (YTH20F42T), PRODUCT NO. 960 43 00-05
ELECTRICAL**

KEY NO.	PART NO.	DESCRIPTION
1	532 14 49-27	Battery
2	874 76 04-12	Bolt Hex Hd 1/4-20 unc x 3/4
8	532 18 64-91	Battery Box
16	532 17 61-38	Switch Interlock
21	532 18 37-59	Harness Socket Light
22	532 00 41-52	Bulb, Light # 1156
24	532 40 02-53	Cable Battery
25	532 19 88-93	Cable Starter
26	532 17 51-58	Fuse
27	873 51 04-00	Nut Keps Hex 1/4-20 unc
28	532 14 54-91	Cable Ground 21" Blk 6 Ga.
29	532 40 15-45	Switch Seat
30	532 19 33-50	Switch Ign
33	532 14 04-01	Key Ign Molded Generic
34	532 11 07-12	Switch Light/Reset
40	532 40 11-04	Harness Ign
41	817 72 04-08	Screw Thd Cut 1/4-20 x 1/2
42	532 13 15-63	Cover Terminal Red
43	532 19 25-07	Solenoid
46	532 19 81-38	Gauge Hourmeter
50	532 17 46-51	Switch PTO
55	817 49 05-12	Screw Thdrol 5/16-18 x 3/4
71	532 19 42-76	Harness Ign. Dash
90	532 40 02-74	Cover Terminal Battery
91	532 19 02-70	Strap Battery
99	817 67 04-12	Screw Hexwsh Thdrol 1/4-20 x 3/4
100	819 09 14-16	Washer 9/32 x 7/8 x 16 Ga.

NOTE: All component dimensions given in U.S. inches
1 inch = 25.4 mm

TRACTOR - MODEL NO. 917.279240 (YTH20F42T), PRODUCT NO. 960 43 00-05
CHASSIS



chassis-tex_37-gt-husq

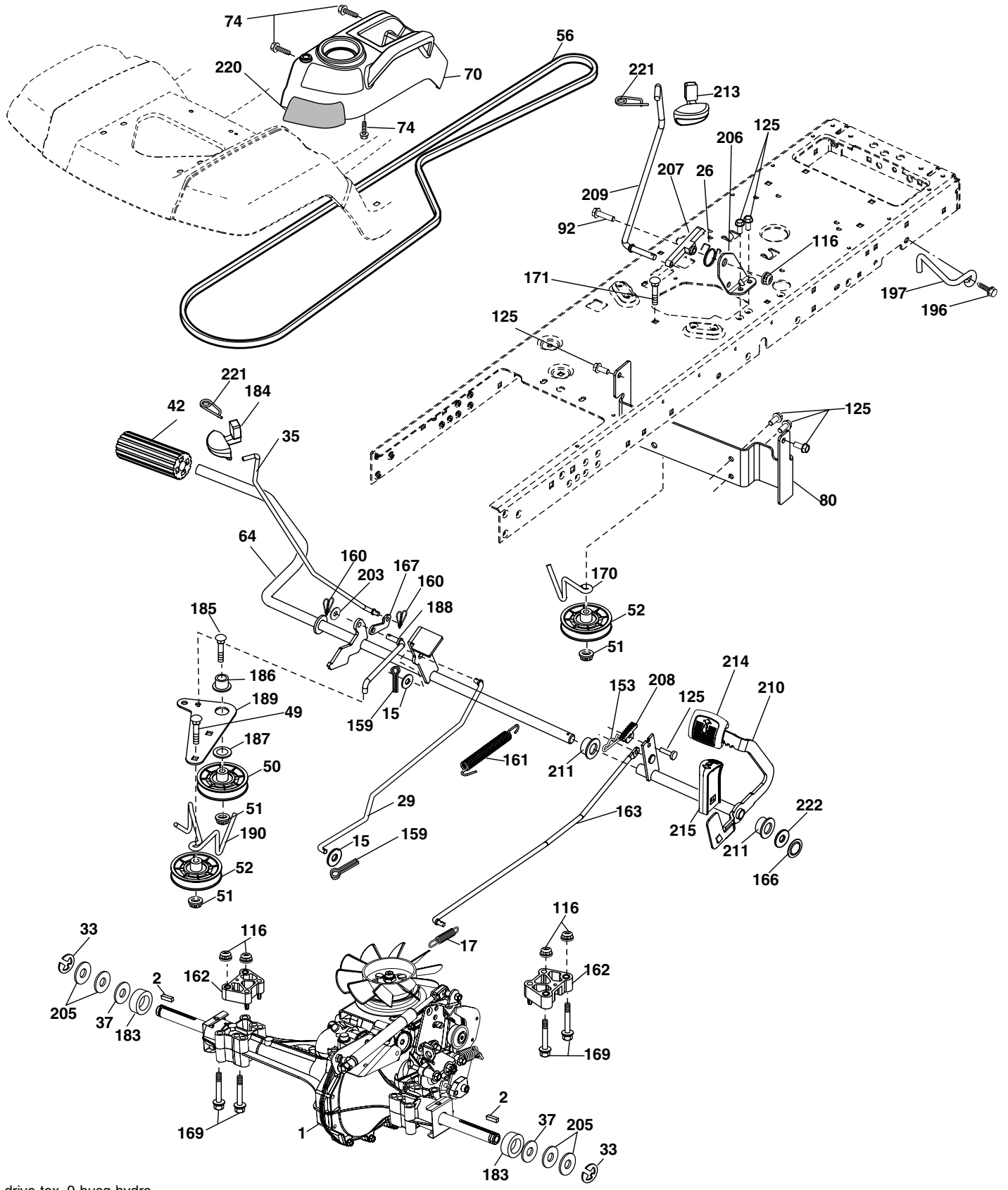
**TRACTOR - MODEL NO. 917.279240 (YTH20F42T), PRODUCT NO. 960 43 00-05
CHASSIS**

KEY NO.	PART NO.	DESCRIPTION
2	532 40 11-40	Drawbar
5	532 40 32-05	Dash
14	532 40 18-24	Hood
15	532 19 89-07	Lens LH
17	817 06 06-12	Screw 3/8-16 x .75
18	532 40 48-21	Grille
25	532 19 89-06	Lens RH
36	817 06 05-12	Screw 5/16-18 x 3/4
37	532 40 18-25	Fender
58	532 19 43-14	Bracket Fender
68	817 49 05-08	Screw 5/16-18 x 1/2
99	532 19 82-53	Rod Bypass Asm.
130	532 19 16-11	Screw 10 x 3/4 Single Lead-Hex
150	532 19 85-13	Duct Heat Hood
161	532 40 18-26	Console Fuel Window
162	532 14 24-32	Screw Hex Wsh Hi-Lo 1/4 x 1/2
165	532 19 43-30	Support Tank Rear
175	532 19 63-04	Crossmember
176	532 40 07-76	Screw 10-24 x 5/8 RND Qdrx
177	532 19 52-27	Bushing Steering
178	532 19 97-82	Cargo Asm. Net
180	532 19 42-60	Chassis
181	532 40 30-25	Bushing Mtg. Fender Crgo.
182	532 19 47-87	Dash Lower

KEY NO.	PART NO.	DESCRIPTION
183	874 78 05-20	Bolt 5/16-18 x 1/1/4
184	532 19 57-80	Spacer Fender
194	873 90 05-00	Nut Lock 5/16-18
195	532 40 41-37	Plug Hole Dash Lower
196	532 40 02-99	Console Asm. Deck Lift
199	532 19 82-59	Plate Deck Lift
202	532 40 30-48	Vent Side Hood RH
203	532 40 30-76	Vent Side Hood LH
204	532 19 89-04	Vent Asm Hood Top
205	532 40 17-09	Skirt Hood Side RH
206	532 40 17-11	Skirt Hood Side LH
207	532 19 71-98	Bezel RH
208	532 19 71-99	Bezel LH
209	532 19 91-30	Insert Hex Top RH
210	532 19 91-31	Insert Hex Top LH
211	532 19 91-32	Insert Hex Bottom RH
212	532 19 91-33	Insert Hex Bottom LH
214	532 19 91-45	Clip Retainer
217	532 15 65-24	Rod Pivot
219	532 19 51-61	Stud Fastner
221	532 19 89-09	Reflector LH

NOTE: All component dimensions given in U.S. inches
1 inch = 25.4 mm

**TRACTOR - MODEL NO. 917.279240 (YTH20F42T), PRODUCT NO. 960 43 00-05
DRIVE**



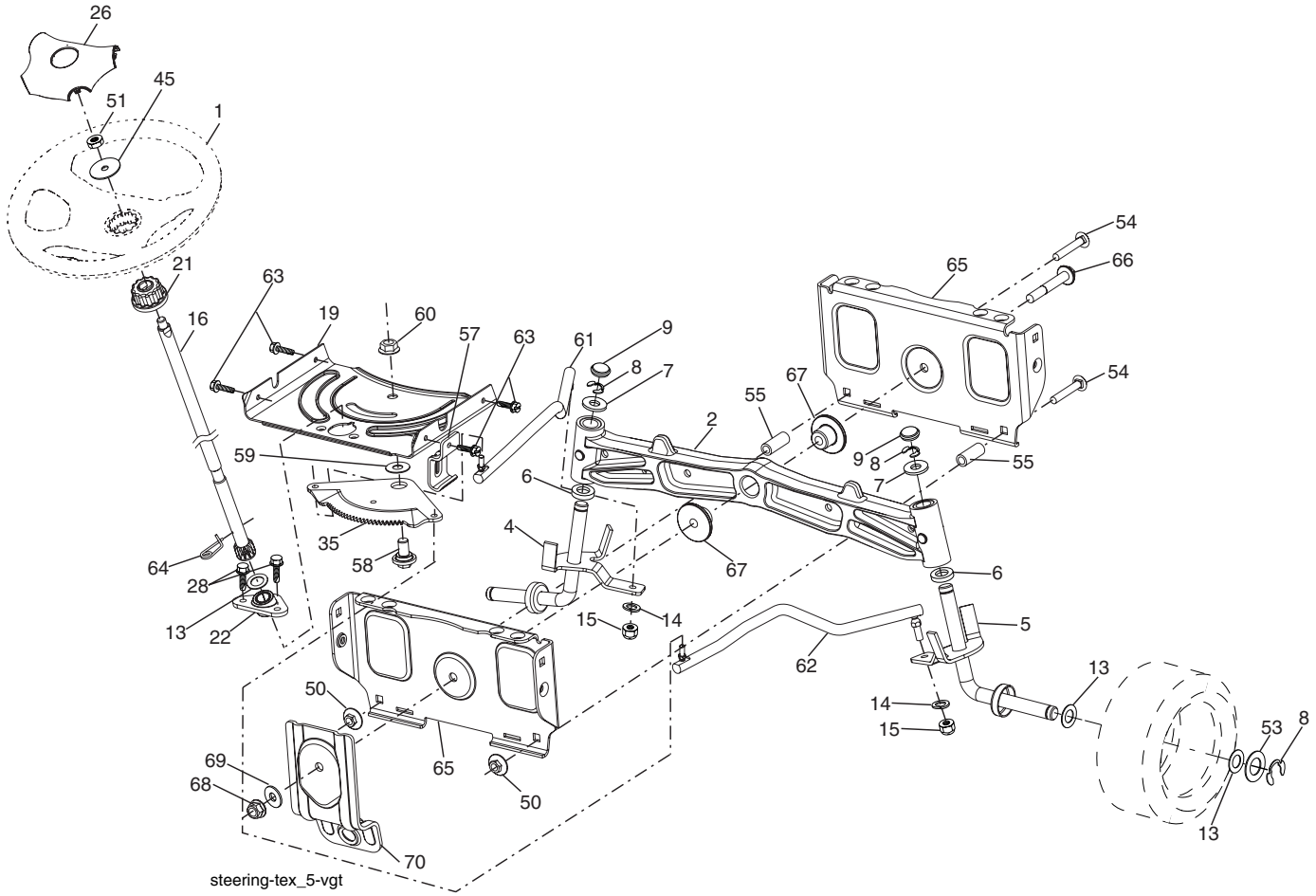
drive-tex_9-husq-hydro

**TRACTOR - MODEL NO. 917.279240 (YTH20F42T), PRODUCT NO. 960 43 00-05
DRIVE**

KEY NO.	PART NO.	DESCRIPTION	KEY NO.	PART NO.	DESCRIPTION
1	-----	Transaxle, Hydro 354- 0510 (See Breakdown)	170	532 19 43-22	Keeper Belt Centerspan
2	532 12 35-83	Key	171	872 11 06-16	Bolt
15	819 13 13-16	Washer 13/32 x 13/16 x 16 Ga.	183	532 13 70-57	Spacer Split
17	532 19 72-96	Spring, Brake	184	532 40 31-18	Handle Parking Brake
26	532 19 96-79	Spring Return Cruise	185	872 11 06-20	Bolt
29	532 19 94-67	Rod, Brake	186	532 19 43-21	Spacer Retainer
33	812 00 00-01	Ring E	187	819 13 32-10	Washer
35	532 19 95-91	Rod, Brake, Park	188	532 19 43-23	Link Clutch Ground Drive
37	532 12 17-49	Washer	189	532 19 43-17	Bellcrank Ground Drive
42	532 12 48-72	Cover, Foot Pedal	190	532 19 43-18	Keeper Bellcrank Ground Drive
49	872 11 06-14	Bolt	196	817 00 06-16	Screw 3/8-16 x 1
50	532 19 43-27	Pulley Idler Flat	197	532 19 58-04	Bracket Clutch Anti-Rotation
51	873 90 06-00	Lock Nut 3/8-16	203	819 11 11-16	Washer 11/32 x 11/16 x 16 Ga.
52	532 19 43-26	Idler V-Groove 910" Offset	205	532 12 17-48	Washer
56	532 14 02-18	V-Belt, Drive	206	532 19 78-67	Bracket Mount Latch Cruise
64	532 19 78-65	Shaft Asm. Pedal Brake Control	207	532 19 78-68	Latch Control Cruise
70	532 40 05-30	Console Asm.	208	532 19 78-69	Gear Sector Control Cruise
74	532 14 24-32	Screw 1/4 x 1/2	209	532 19 95-92	Rod Control Cruise
80	532 40 05-07	Bracket Strap Torque	210	532 19 78-60	Rocker Asm. Pedal Control
92	874 76 05-20	Bolt Fin Hex 5/16-18 unc x 1.25	211	532 12 01-83	Bearing Nylon
116	873 90 05-00	Nut Lock Hex Flange 5/16-18	213	532 40 31-19	Knob Control Cruise
125	817 00 05-12	Screw 5/16-18 x 3/4	214	532 40 17-22	Pad Pedal Forward
153	532 12 47-88	Retainer Spring	215	532 40 17-23	Pedal Reverse
159	876 02 04-12	Pin Cotter 1/8 x 3/4	220	532 19 89-08	Reflector RH
160	532 16 94-84	Retainer Clip	221	532 40 31-87	Retainer Spring Clip Handle
161	532 19 54-03	Spring, Return, Clutch	222	819 21 20-10	Washer 21/32 x 1-1/4 x 10 Ga.
162	532 19 57-85	Spacer Transaxle			
163	532 19 90-00	Rod Pedal Control			
166	532 19 72-90	Nut Push .625			
167	532 19 62-11	Latch Brake Parking			
169	874 49 05-60	Bolt Hex Flghd 5/16-18 x 3.75			

NOTE: All component dimensions given in U.S. inches
1 inch = 25.4 mm

TRACTOR - MODEL NO. 917.279240 (YTH20F42T), PRODUCT NO. 960 43 00-05
STEERING ASSEMBLY

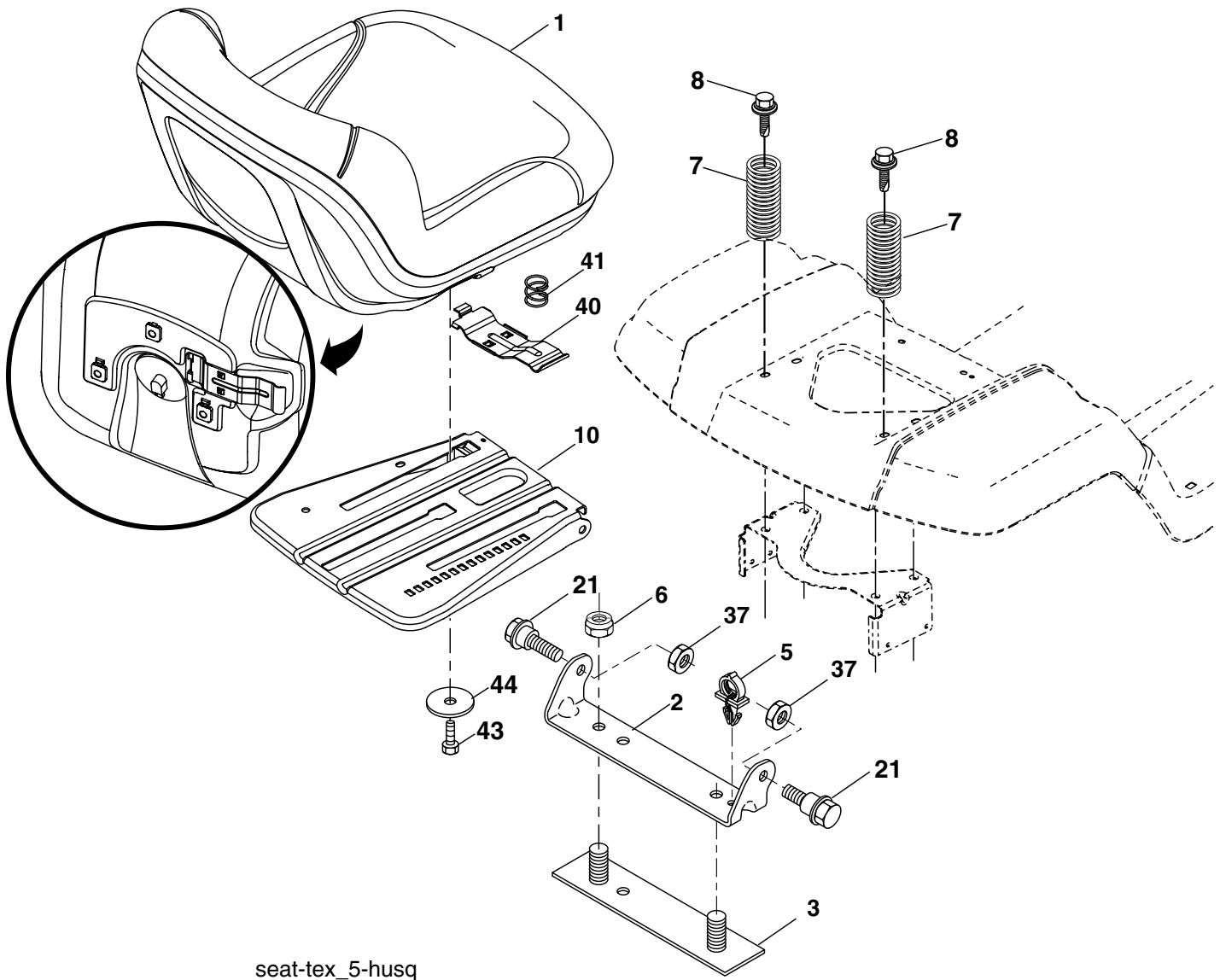


**TRACTOR - MODEL NO. 917.279240 (YTH20F42T), PRODUCT NO. 960 43 00-05
STEERING ASSEMBLY**

KEY NO.	PART NO.	DESCRIPTION
1	532 19 39-43	Wheel, Steering
2	532 19 59-68	Axle Asm., Front
4	532 40 30-87	Spindle Asm., LH
5	532 40 30-88	Spindle Asm., RH
6	532 12 49-31	Bearing, Race Thrust Harden
7	532 12 17-48	Washer 25/32 x 1-5/8 x 16 Ga.
8	812 00 00-29	Ring, Klip #T5304-75
9	532 12 12-32	Cap, Spindle
13	532 12 17-49	Washer 25/32 x 1-1/4 x 16 Ga.
14	810 04 06-00	Washer, Lock Hvy Hlcl Spr 3/8
15	873 54 06-00	Nut, Crown Lock 3/8-24 unf
16	532 19 47-46	Shaft Steering
19	532 19 47-29	Plate Steering
21	532 18 67-37	Adapter, Wheel Steering
22	532 19 48-45	Bushing, Strg. Blk
26	532 19 36-52	Insert, Wheel Steering
28	817 00 06-12	Screw 3/8-16 x 3/4
35	532 19 47-32	Gear, Sector Plate
45	819 18 38-12	Washer 9/16 x 2-3/8 x 12 Ga.
50	873 90 06-00	Nut Lock 3/8-16
51	873 94 08-00	Nut Hex Jam Toplock 1/2-20 unf
53	532 18 89-67	Washer Hardened .793 x 1.637 x .060
54	874 76 06-36	Bolt 3/8-16 x 2-1/2
55	532 19 76-36	Spacer Brace Axle
57	532 19 72-46	Bracket Upstop
58	532 19 47-47	Bolt Shoulder Sector Pivot CFM
59	532 19 47-48	Washer Thrust Sector Steering
60	873 97 10-00	Nut Flange Lock 5/8-11
61	532 19 47-40	Draglink LH
62	532 19 47-41	Draglink, RH
63	817 00 05-12	Screw 5/16-18 x 3/4
64	532 19 98-49	Retainer Clip Spring Steering
65	532 19 47-34	Brace Axle Front
66	871 02 07-48	Bolt Hex Fghd 7/16-14 x 3 Serr
67	532 19 47-37	Bushing PM Front Axle
68	873 90 07-00	Nut Lock Flange 7/16-14 Gr. 5
69	532 19 91-62	Washer
70	532 19 61-97	Bracket Deck Susp. Front

NOTE: All component dimensions given in U.S. inches
1 inch = 25.4 mm

**TRACTOR - MODEL NO. 917.279240 (YTH20F42T), PRODUCT NO. 960 43 00-05
SEAT ASSEMBLY**



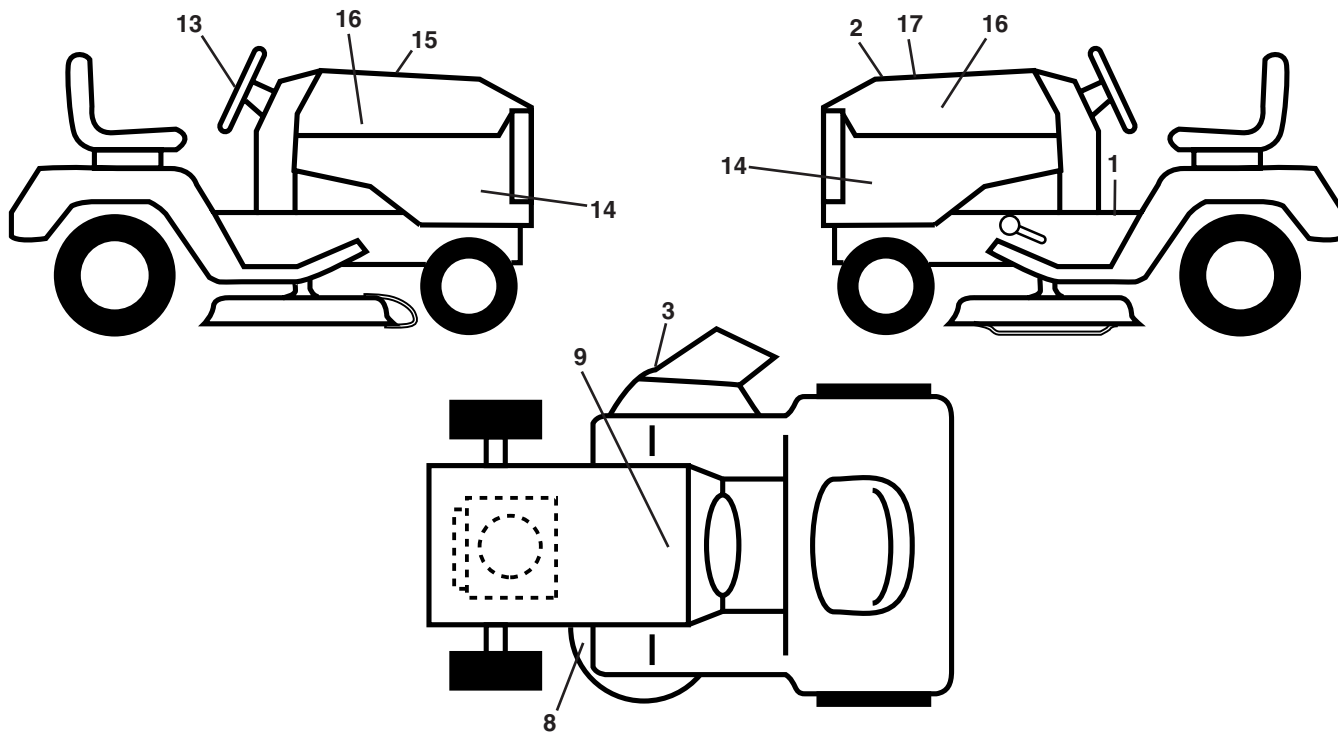
seat-tex_5-husq

KEY NO.	PART NO.	DESCRIPTION
1	532 19 75-26	Seat
2	532 18 01-66	Bracket Pivot Fender
3	532 14 06-75	Strap, Asm Fender
5	532 14 50-06	Clip, Push In, Hinged
6	873 80 06-00	Nut, Lock W/Ins. 3/8-16 unc
7	532 12 41-81	Spring, Seat Cprsn
8	532 17 18-77	Bolt 5/16-18 uncx 3/4 w/Sems
10	532 19 69-77	Pan, Seat

KEY NO.	PART NO.	DESCRIPTION
21	532 17 18-52	Bolt, Shoulder 5/16-18
37	873 80 05-00	Nut, Lock 5/16-18 unc
40	532 19 76-61	Handle Slide Seat
41	532 19 82-00	Spring Latch Seat
43	874760612	Bolt Fin Hex 3/8-16 unc x 3/4
44	819133812	Washer 13/32 x 2-3/8 x 12 Ga.

NOTE: All component dimensions given in U.S. inches
1 inch = 25.4 mm

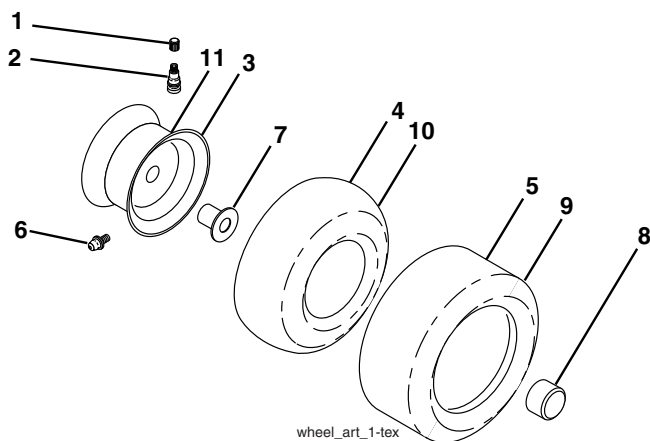
**TRACTOR - MODEL NO. 917.279240 (YTH20F42T), PRODUCT NO. 960 43 00-05
DECALS**



KEY NO.	PART NO.	DESCRIPTION
1	532 40 21-04	Decal, Operator's
2	532 40 21-28	Decal, Hood Insert
3	532 17 05-63	Decal, Warning
8	532 16 03-96	Decal, Mower Sch.
9	532 14 50-05	Decal, Battery Dnge/Poi
13	532 18 89-25	Decal, Steering Whl
14	532 40 37-18	Decal, Panel Side
15	532 18 09-41	Decal, Cust. Resp.

KEY NO.	PART NO.	DESCRIPTION
16	532 40 28-32	Decal, Hood Logo
17	532 40 16-97	Decal, Replacement
--	532 16 69-60	Decal, Bypass
--	532 40 17-71	Pad, Footrest, LH
--	532 40 37-73	Pad, Footrest, RH
--	532 40 39-94	Manual, Owner's (Eng)
--	532 40 39-95	Manual, Owner's (Fr)

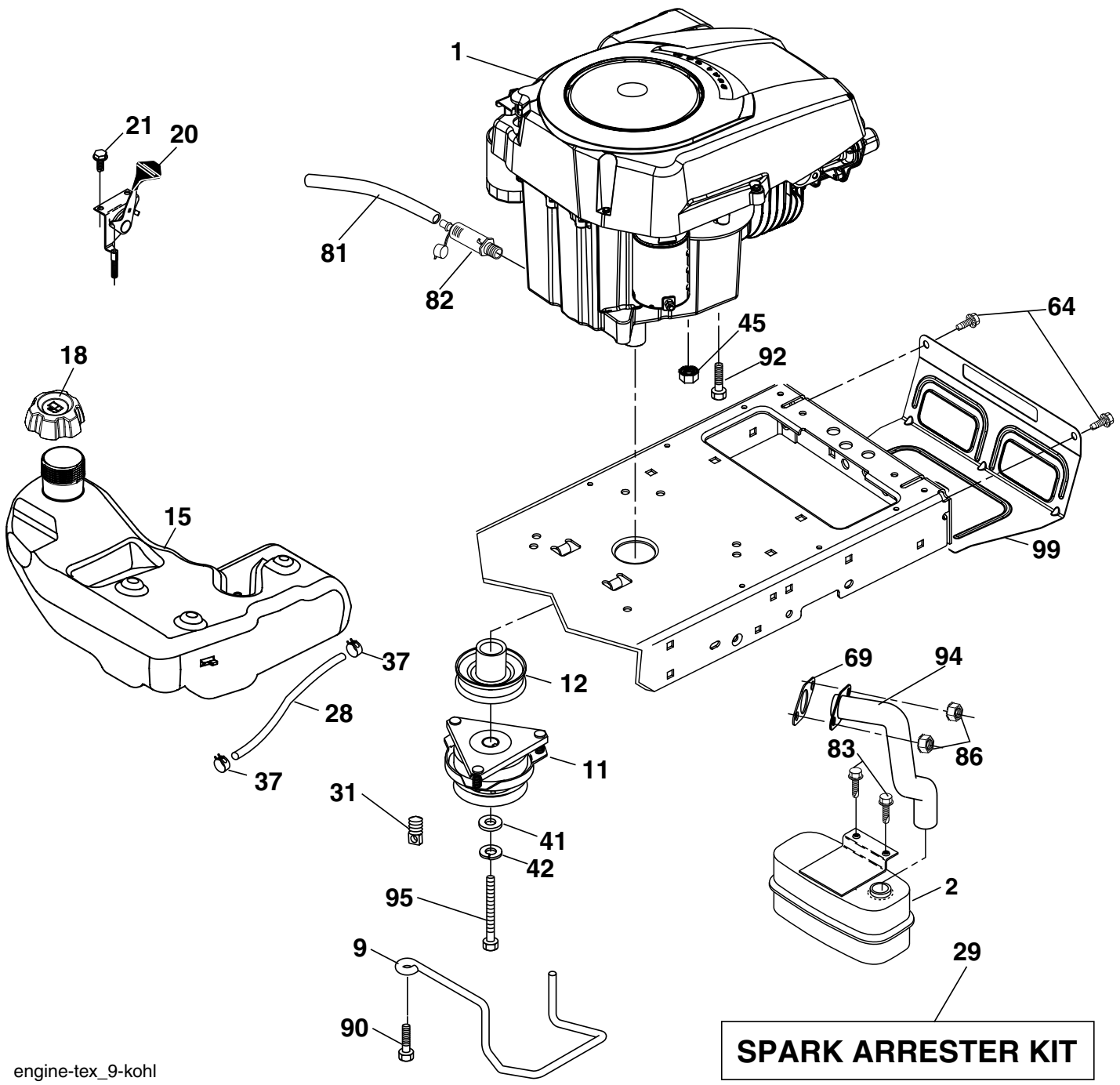
WHEELS AND TIRES



KEY NO.	PART NO.	DESCRIPTION
1	532 05 91-92	Cap, Valve, Tire
2	532 06 51-39	Stem, Valve
3	532 13 83-36	Rim Assembly, Front
4	532 05 99-04	Tube, Front (Service Item Only)
5	532 10 62-22	Tire, Front
6	532 12 49-57	Fitting, Grease (Front Wheel Only)
7	532 12 49-59	Bearing, Flange (Front Wheel Only)
8	532 17 50-39	Cap, Axle (Front Wheel Only)
9	532 13 84-68	Tire, Rear
10	532 12 49-26	Tube, Rear (Service Item Only)
11	532 13 83-37	Rim Assembly, Rear
--	532 14 43-34	Sealant, Tire (10 oz. Tube)

NOTE: All component dimensions given in U.S. inches
1 inch = 25.4 mm

**TRACTOR - MODEL NO. 917.279240 (YTH20F42T), PRODUCT NO. 960 43 00-05
ENGINE**



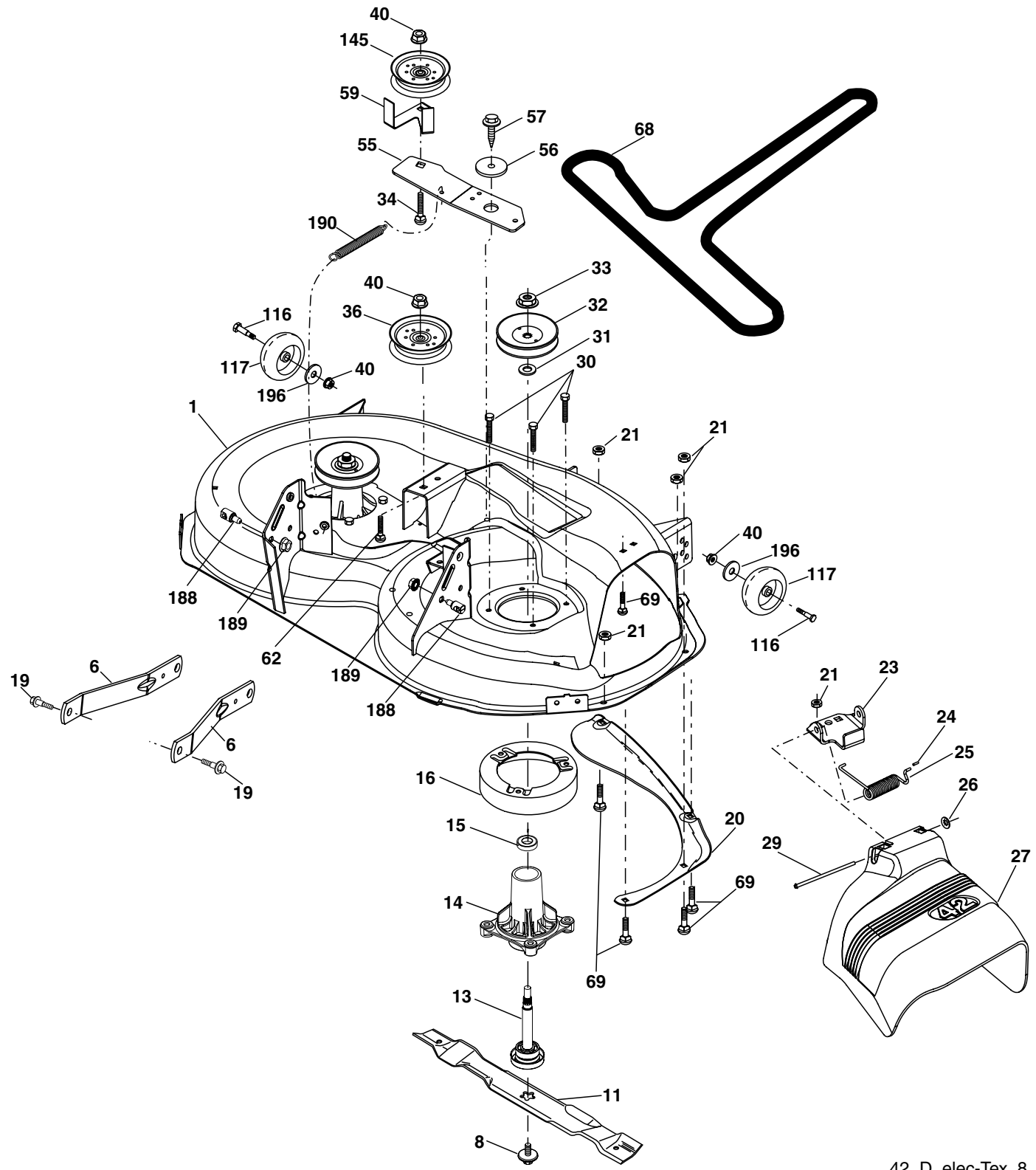
engine-tex_9-kohl

**TRACTOR - MODEL NO. 917.279240 (YTH20F42T), PRODUCT NO. 960 43 00-05
ENGINE**

KEY NO.	PART NO.	DESCRIPTION
1	-----	Engine Kohler Model No.SV600-0002 (See Breakdown)
2	532 18 86-55	Muffler
9	532 19 43-19	Keeper Belt Engine
11	532 18 05-05	Clutch
12	532 19 43-38	Pulley Engine
15	532 19 34-99	Tank Fuel 4.0
18	532 19 42-67	Cap Asm
20	532 40 15-08	Control Throttle
21	817 72 04-08	Screw 1/4-20 x 1/2
28	532 40 11-35	Fuel Line
29	532 13 71-80	Spark Arrester Kit
31	532 14 50-05	Clip Push-In
37	532 12 34-87	Clamp Hose
41	532 12 61-97	Washer 1-1/2 OD x 15/32 ID x .250
42	810 04 07-00	Washer Lock 7/16
45	873 51 04-00	Nut Keps Hex 1/4-20 unc
64	817 00 06-12	Screw 3/8-16 x 3/4
69	532 18 59-09	Gasket
81	532 14 84-56	Tube Drain Oil Easy
82	532 18 16-54	Plug Drain Oil
83	532 17 18-77	Bolt 5/16-18 x 3/4 (goes with muffler)
86	532 18 43-62	Nut Hex Flange Toplock M8-1.25
90	817 00 06-16	Screw 3/8-16 x 1
92	817 12 06-16	Screw 3/8-16 x 1
94	532 18 86-54	Tube Exhaust
95	532 17 39-37	Bolt Hex 7/16-20 x 4 Gr. 5
99	532 19 43-29	Shield Browning

NOTE: All component dimensions given in U.S. inches
1 inch = 25.4 mm

**TRACTOR - MODEL NO. 917.279240 (YTH20F42T), PRODUCT NO. 960 43 00-05
MOWER DECK**



42_D_elec-TeX_8

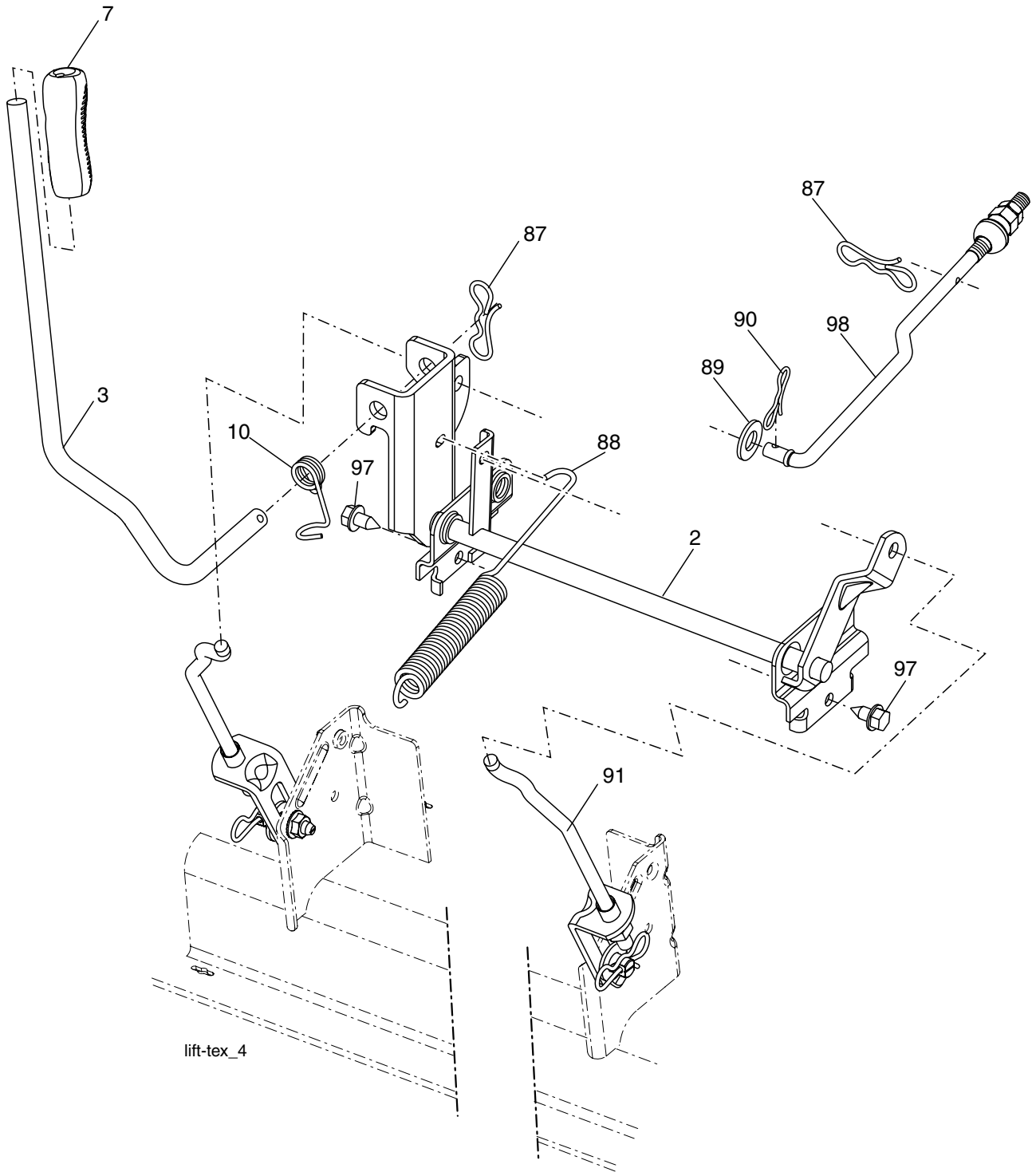
**TRACTOR - MODEL NO. 917.279240 (YTH20F42T), PRODUCT NO. 960 43 00-05
MOWER DECK**

KEY NO.	PART NO.	DESCRIPTION
1	532 19 64-95	Mower Housing
6	532 19 51-86	Arm Suspension
8	532 19 30-03	Bolt/Washer asm 7/16-20 unf
11	532 13 97-75	Blade, 42" Mulching Premium (For better wear when mulching)
--	532 13 89-71	Blade, 42" Hi-Lift (For bagging or discharge)
--	532 13 41-49	Blade, 42" Mulching Std (For mulching mowers only)
13	532 19 28-72	Shaft Assembly, Mandrel
14	532 18 72-81	Housing, Mandrel
15	532 11 04-85	Bearing, Ball, Mandrel
16	532 17 44-93	Stripper, Mower Deck
19	532 19 65-39	Bolt, Shoulder
20	532 15 97-70	Baffle, Vortex
21	873 68 05-00	Nut, Crownlock 5/16-18 unc
23	532 19 25-57	Bracket, Deflector
24	532 10 53-04	Cap, Sleeve
25	532 19 70-26	Spring, Torsion, Deflector
26	532 11 04-52	Nut, Push
27	532 40 30-04	Shield, Deflector
29	532 13 14-91	Rod, Hinge
30	532 17 39-84	Screw Thdrol Rolling Wsh Hd
31	532 18 76-90	Washer, Spacer
32	532 17 34-36	Pulley, Mandrel

KEY NO.	PART NO.	DESCRIPTION
33	532 40 02-34	Nut, Toplock, Flanged
34	872 11 06-12	Bolt Carr Sh. 3/8-16 x 1-1/2 Gr. 5
36	532 19 61-06	Pulley, Idler, Flat
40	873 90 06-00	Nut, Lock Flg. 3/8-16 unc
55	532 19 72-49	Arm, Idler
56	532 19 90-92	Spacer, Retainer
57	817 00 06-16	Screw 3/8-16 x 1
59	532 14 10-43	Guard, Tuv Idler
62	872 11 06-16	Bolt 3/8-16 unc x 2
68	532 14 49-59	V-Belt
69	872 14 05-05	Bolt 5/16-18 x 5/8
116	532 19 34-06	Bolt, Shoulder
117	532 17 48-73	Wheel, Gauge
145	532 17 79-68	Pulley Idler
188	532 19 51-61	Stud Fastener
189	873 90 05-00	Nut Lock Hex Flange
190	532 19 72-51	Spring Mower Drive
198	819 13 20-12	Washer 13/32 x 1-1/4 x 12 Ga.
--	532 19 28-70	Mandrel Assembly (Includes housing, shaft and shaft hardware only-pulley not included)
--	532 40 12-24	Replacement Mower, Complete

NOTE: All component dimensions given in U.S. inches
1 inch = 25.4 mm

**TRACTOR - MODEL NO. 917.279240 (YTH20F42T), PRODUCT NO. 960 43 00-05
MOWER LIFT**

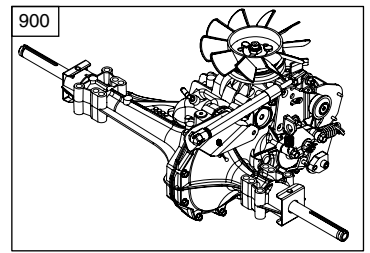
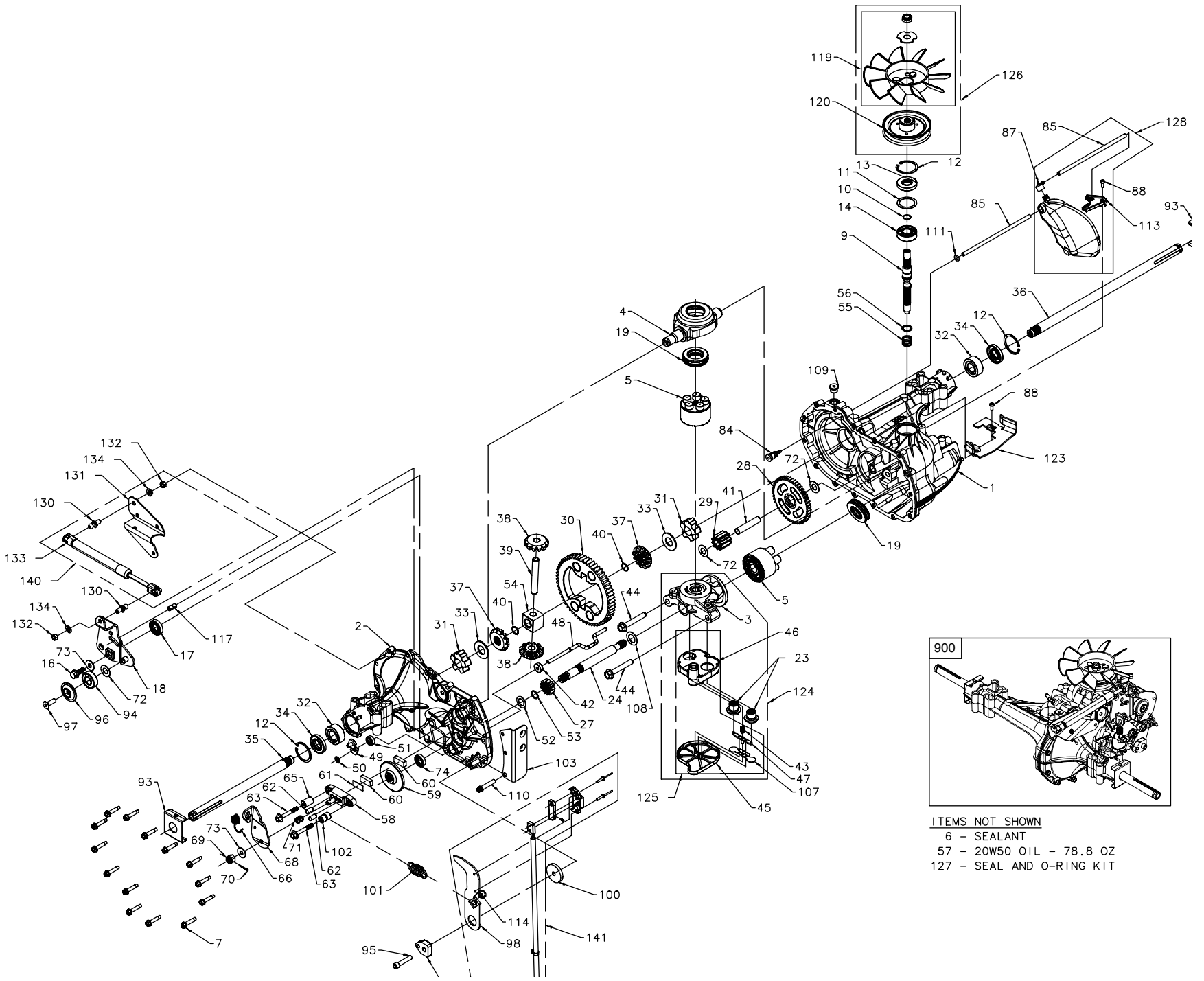


KEY NO.	PART NO.	DESCRIPTION
2	532 19 52-23	Shaft Asm., Lift
3	532 19 52-30	Lever Asm., Lift Rh
7	532 19 64-92	Grip, Lever
10	532 19 63-14	Spring Torsion
87	532 19 42-09	Pin Cotter 7/16 Bow Tie Lock
88	532 19 53-04	Spring Lift Assist
89	819 19 19-12	Washer Clear Zinc

KEY NO.	PART NO.	DESCRIPTION
90	532 19 42-08	Pin Cotter 5/16 Bow Tie Lock
91	532 19 51-81	Link Lift Susp Mower Rear
97	817 06 06-12	Screw 3/8-16 x .75 Smgml Tap/R.Z
98	532 19 52-70	Link Lift Susp. Front Mower

NOTE: All component dimensions given in U.S. inches
1 inch = 25.4 mm

**TRACTOR - MODEL NO. 917.279240 (YTH20F42T), PRODUCT NO. 960 43 00-05
HYDRO TRANSAXLE - - MODEL NUMBER 354-0510**



- ITEMS NOT SHOWN**
 6 - SEALANT
 57 - 20W50 OIL - 78.8 OZ
 127 - SEAL AND O-RING KIT

43

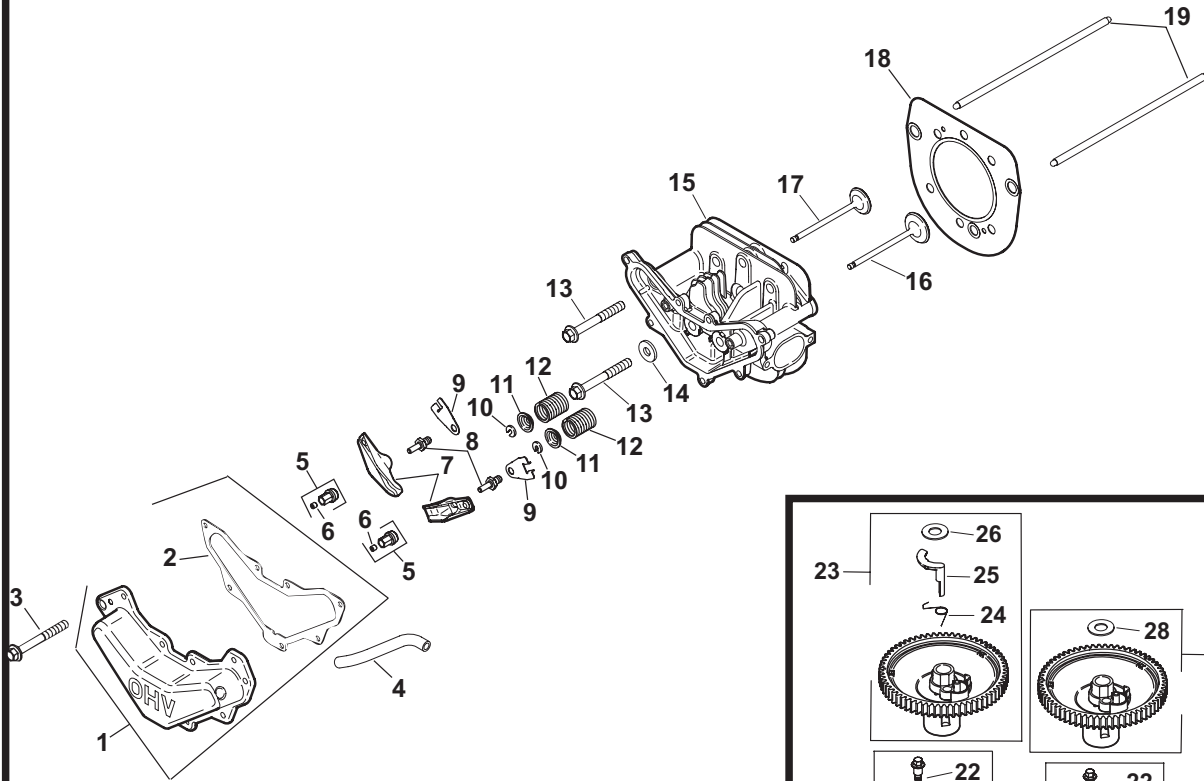
TRACTOR - MODEL NO. 917.279240 (YTH20F42T), PRODUCT NO. 960 43 00-05

HYDRO TRANSAXLE - - MODEL NUMBER 354-0510

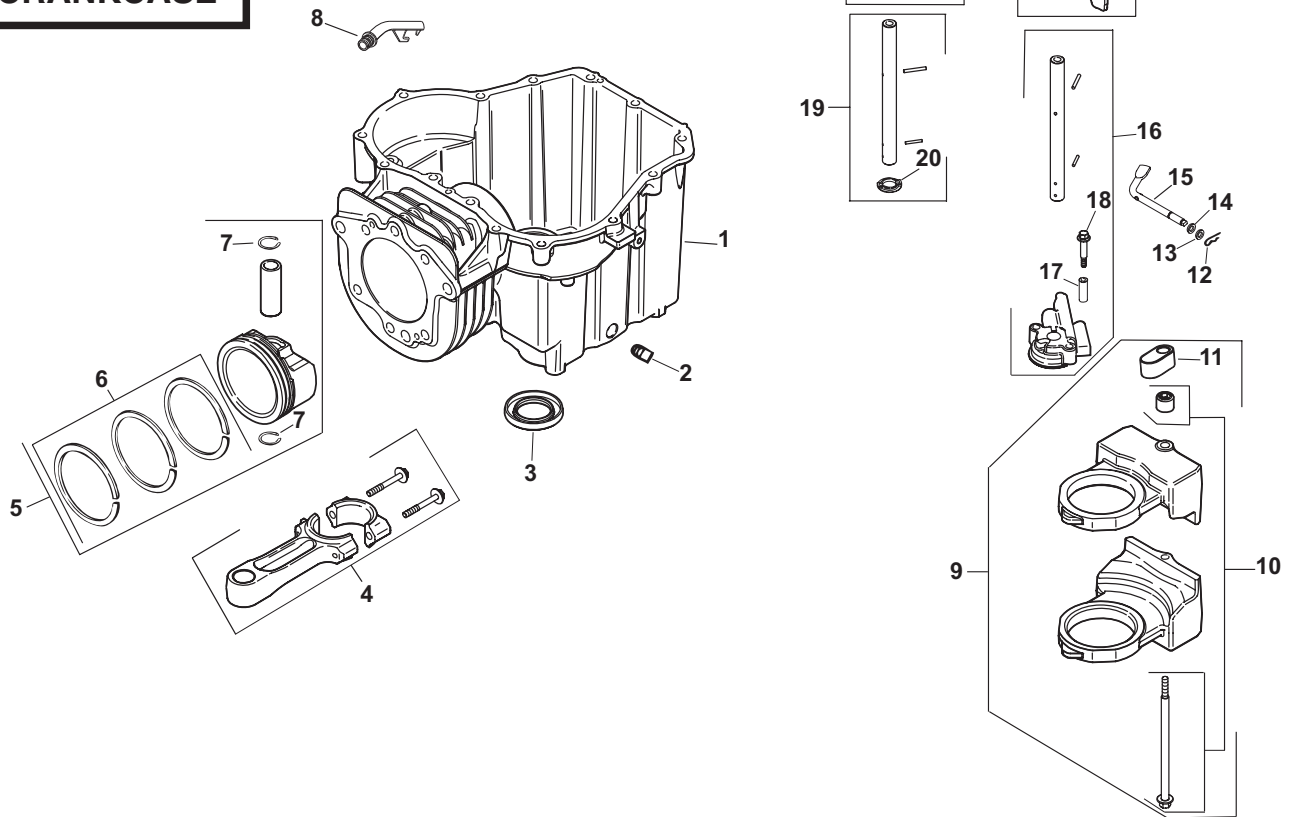
KEY NO.	PART NO.	DESCRIPTION	KEY NO.	PART NO.	DESCRIPTION
1	170351	Kit, main housing Main housing, machined	72	170418	Washer (310-0750)
		Bushing .865 X.985 X.790	73	142884	Washer, flat
2	170352	Kit, side housing	74	170419	Seal, oil
		Side housing, machined	84	170425	Fitting, 5/16 x sae 5/32 tube
		Bushing .865 X.985 X.790 Bushing .624 X.719	85	170426	Hose, expansion tank
		X.562	87	401264	Cap, barbed vent
3	170353	Kit, center section Center section, machined	88	178334	Bolt, self tapping (BDR)
		Bushing .707 X .788 X .591	93	170431	Spring clip, housing
4	170354	Swashplate, trunnion machined	94	178783	Bearing, ball
5	169898	Kit, cylinder block (1000)	95	178784	Screw, 5/16-24x 1 1/2 socket head cap (310-3000)
		Block - cylinder Piston, Spring, compression			Spacer, locating
		Washer thrust	96	178786	Screw (310-3000)
6	178322	Sealant tube	97	178787	Arm, return
7	170356	Hexflange screw 1/4-20 x 1.25	98	404027	Puck, adjusting
9	170358	Shaft, input	99	178792	Washer, .325 Odx.6 ldx.15 TK
10	170359	Retaining ring	100	178793	Spring, extension
11	170360	Spacer	101	178794	Spacer, .56 Odx.26 ID x.87
12	169870	Retaining ring	102	178795	Bracket, torque
13	170361	Seal, lip .67 X 1.58 X .276	103	404028	Deflector
14	173158	Bearing, ball 6203 (BDR)	107	170432	Washer, motor shaft.71 ID x 1.150D x.03 Thick
16	170362	Hex flange head screw 1/4-20 x 1.25	108	170433	Plug, straight thread 9/16-18
17	170363	Seal, lip 18 x 32 x 7	109	170434	Screw, torx head 5/16-18 (310-3000)
18	178781	Arm, control	110	161159	O-ring .7 X .301 ID
19	173159	Bearing, thrust (10cc)	111	170435	Bracket, support expansion tank
23	170420	Check plug assembly, .027 Washer	113	170437	Spring guide
24	170366	Shaft motor	114	178797	Pin, spring 5/16 x.75
27	170367	Gear, pinion, 13T	117	178799	191031 Kit, fan - washer - nut, Fan, 7 in
28	170368	Gear 1 OT / 48T	119		Hex lock nut 1/2-20 (nylon insert)
29	170369	Gear, 1 OT jackshaft			Washer, or slotted, .53 X 1.63 X.06
30	170370	60T bullgear			Pulley
31	170371	Sleeve bearing .75 X 1.75 X.625	120	170440	Belt keeper
32	170389	Sleeve bearing (outboard) .75 X 1.575 X.625	123	401265	Center section filter bypass assembly Center section
33	142991	Washer	124	191033	Base filter w/ poppet check plug assembly, .027 Washer Spring, bypass actuator, bypass deflector bottom, filter bushing, .707 X.788 X.591
34	170390	Lip seal, axle shaft			Kit, filter Bottom, filter spring, bypass actuator, bypass deflector
35	170391	Shaft, axle (keyed, R.H.)			Base, filter w/ poppet
36	170392	Shaft, axle (keyed, L.H.)			Kit, fan/pulley, Hex jam 1/20-20 (nylon insert)
37	401260	Miter gear (splined)			washer, OD slotted, .53 X 1.63 X.06 Fan, 7 in,
38	401261	Miter gear			Pulley
39	150809	Differential shaft (310-0750)			Kit, seal
40	170393	Retaining ring	125	170445	Lip seal .67 X 1.58 X.276 Lip seal 18 x 32 x 7
41	170394	Pin, jackshaft			Lip seal .706 X 1.584 X.25 Lip seal .741 X.250 X.250
42	170395	Magnet, ring			TC oil seal .625 X1.0X .25 O-ring .07 X .301 ID
43	170396	Spring, bypass	126	170446	Kit, expansion tank, Tank, expansion assembly cap, barbed vent., Bolt, self tapping 10-32 x 1/2
44	150797	Bolt 3/8-24 x 2-1/2			bracket, support expansion tank hose, expansion tank
45	170397	Filter	127	170447	Stud, threaded ball
46	170398	Base, filter			Bracket, cruise/damper
47	170399	Actuator, bypass			Nut 5/16-18
48	170400	Rod, bypass actuator			Damper
49	196599	Arm, bypass			Washer, 5/16 lock
50	170402	Retaining ring.25 External	128	401266	Kit, damper, Stud, threaded ball bracket, cruise/damper hex nut 5/16-18 NC damper,
51	170403	Seal, lip .741 X .25 X .25			Washer, helical spring lock 5/16, regular
52	170404	Washer, flat 0.050" (210-1000)			Kit, RCS, Arm, return spring guide switch,
53	170405	Retaining ring			RCS activator, RC Sswitch spring, RCS switch
54	170406	Bearing, center block	130	178802	retainer, RCS switch rivet 5/32
55	142977	Spring, helical compression	131	178803	Transaxle
56	142978	Washer, block thrust	132	178804	
57	20Vv-50	Oil	133	184227	
58	142929	Kit, brake yoke	134	178808	
59	170408	Rotor, brake	140	191030	
60	142883	Brake puck			
61	142882	Brake puck plate			
62	170409	Pin, brake actuating	141	404030	
63	170410	Hfchs 1/4-20 x 2 w/patch, special flange			
65	170411	Spacer, brake torsion spring			
66	189386	Spring, brake arm bias	900	400505	
68	404026	Arm-brake, RH			
69	170415	Nut, castle 5/16-24			
70	170416	Pin, cotter 3/32x3/4			
71	170417	Brake spring			

Note: All Component Dimensions Given In U.S. Inches 1 Inch = 25.4 mm

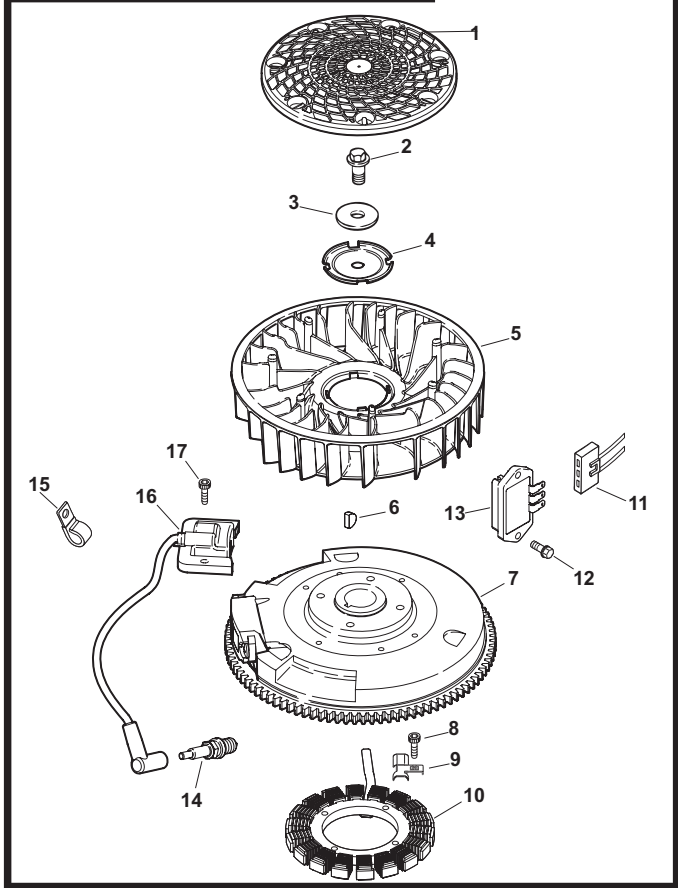
CYLINDER HEAD, VALVE AND BREATHER



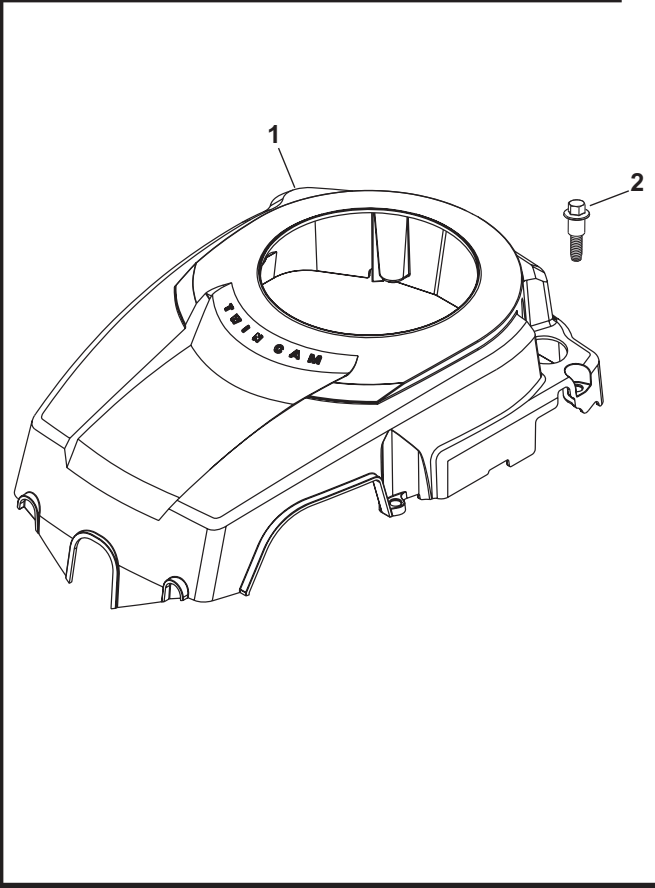
CRANKCASE



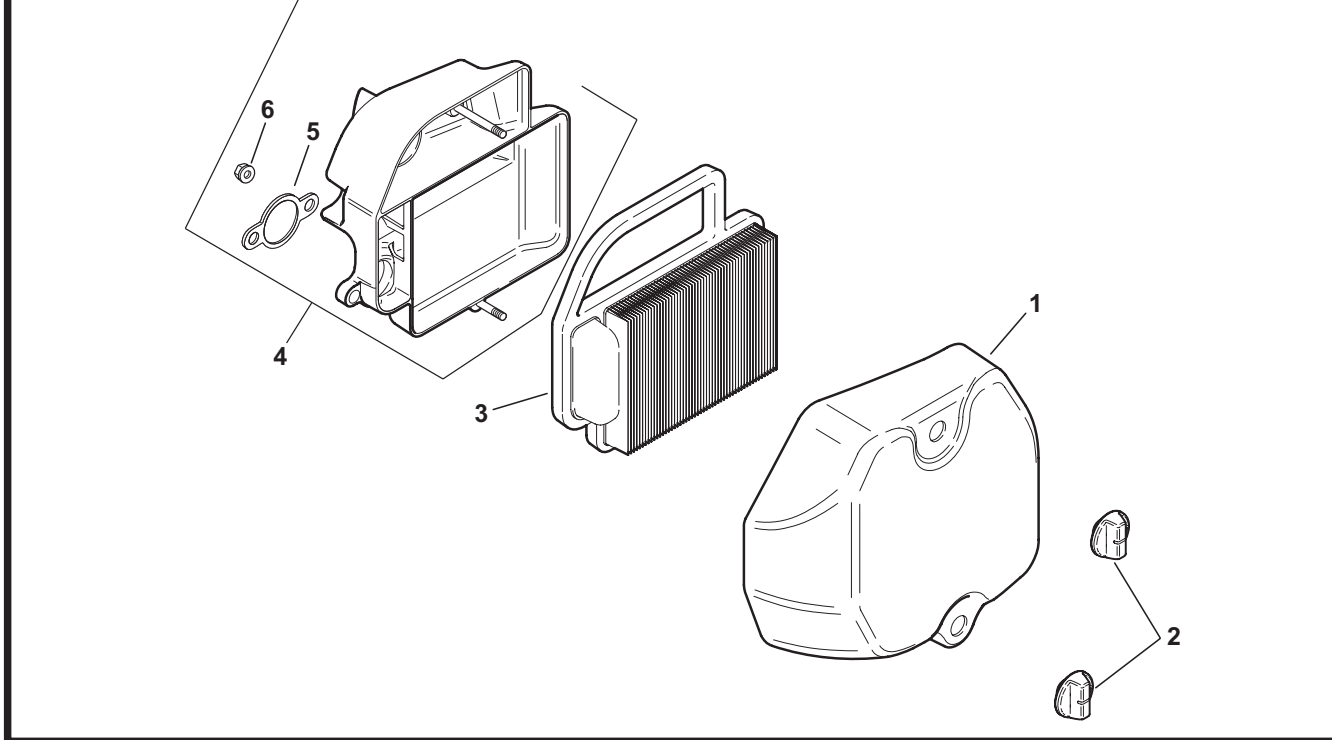
IGNITION/ELECTRICAL



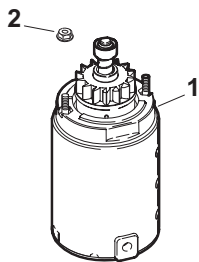
BLOWER HOUSING AND BAFFLES



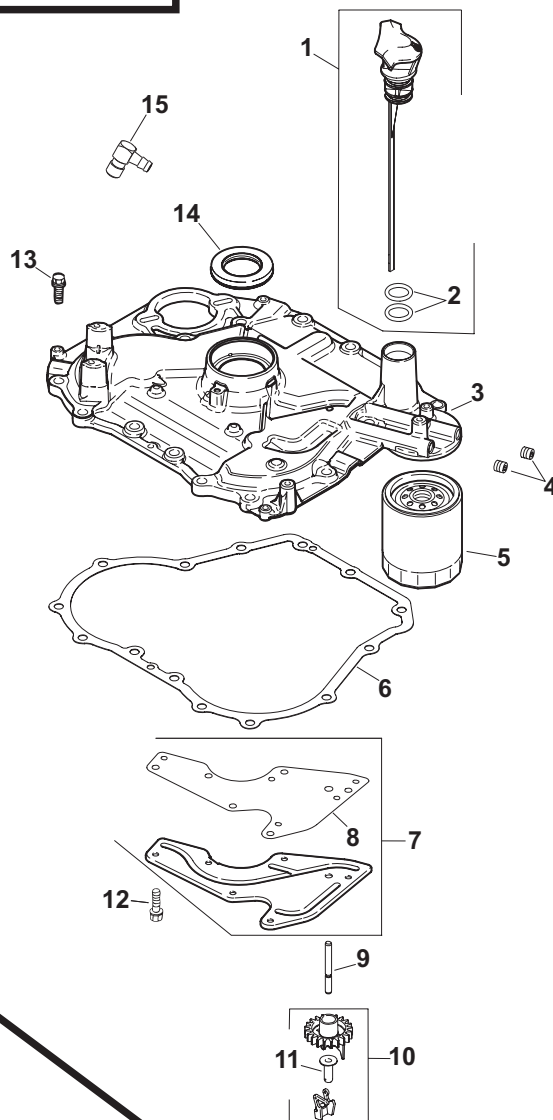
AIR INTAKE



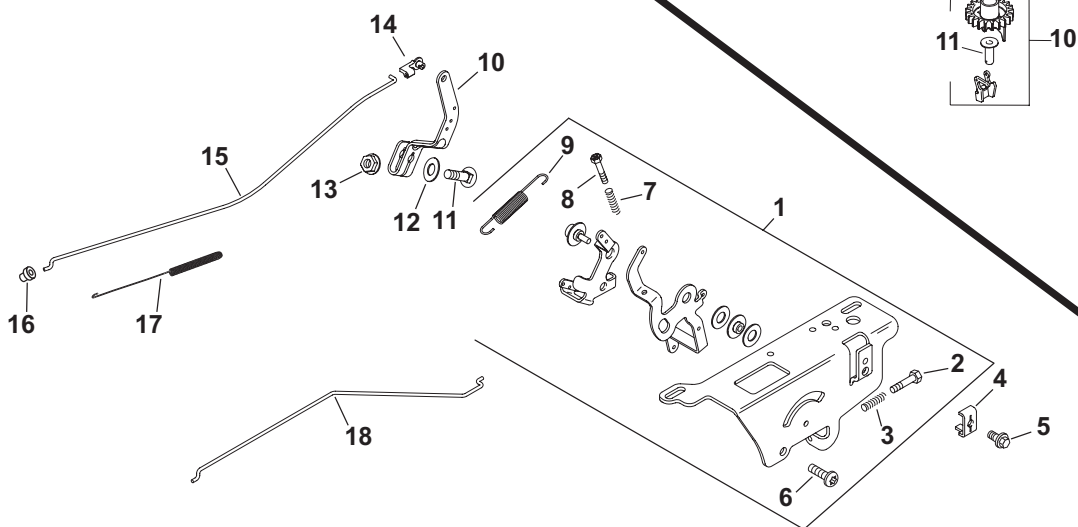
STARTING SYSTEM



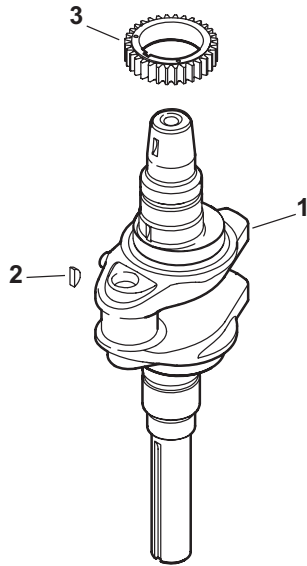
OIL PAN/LUBRICATION



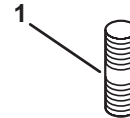
ENGINE CONTROLS



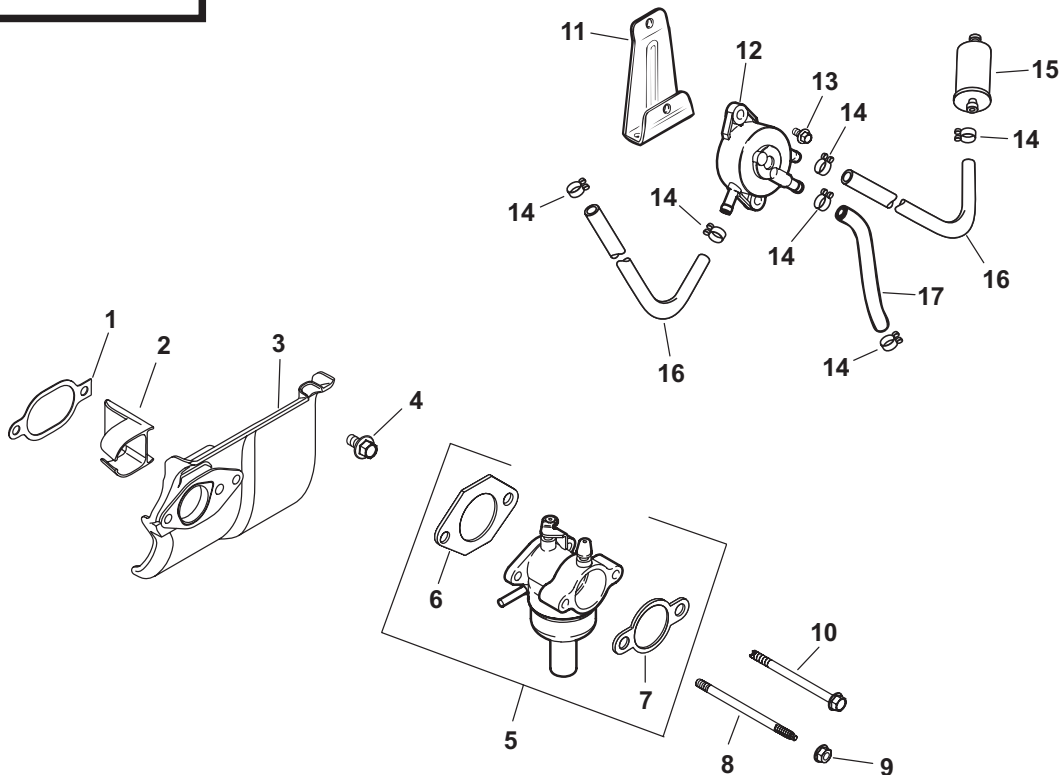
CRANKSHAFT



EXHAUST



FUEL SYSTEM



**TRACTOR - MODEL NO. 917.279240 (YTH20F42T), PRODUCT NO. 960 43 00-05
 KOHLER ENGINE - MODEL NUMBER SV600-0002**

HEAD/VALVE/BREATHER

KEY NO.	PART NO.	DESCRIPTION
1	2009607-s	1 Kit, Valve Cover (Includes 2)
2	20 041 13-s	1 Gasket, Valve Cover
3	M-645020-s	7 Screw, Flg Thd Frm M6x1.0x20
4	2032601-s	1 Hose, Breather
5	20 599 02-s	2 Pivot, Rocker Arm (Includes 6)
6	2008604-s	2 Screw, Set
7	2018601-s	2 Arm, Rocker
8	2008603-s	2 Stud, Rocker
9	2014603-s	2 Plate, Push Rod Guide
10	2006201-s	2 Lock, Retainer
11	2017301-s	2 Cap, Valve Spring
12	2008903-s	2 Spring, Valve
13	2008602-s	6 Screw, Flg M1 Ox1.5x80
14	1246805-s	1 Washer, Flat 13/32"
15	2031805-s	1 Cylinder Head Assembly
16	2001601-s	1 Valve, Exhaust
17	2001701-s	1 Valve, Intake
18	20 841 01-s	1 Kit, Cylinder Head Gasket (Includes 2,13,14) 19 20 411 04-s 2 Rod, Push

CRANKCASE

KEY NO.	PART NO.	DESCRIPTION
1	---	Crankcase (Use: Short Block)
2	2513957-s	1 Plug, Sq Hd Pipe 3/8"
3	2003201-s	1 Seal, Oil
4	2006704-s	1 Rod, Connecting
5	2087401-s	1 Kit, Piston W/ring Set (94mm) (Includes 6,7)
6	2010801-s	1 Ring Set (94 Mm)
7	2001804-s	2 Retainer, Piston Pin
8	2012302-s	1 Tube, Drainback
9	2075504-s	2 Kit, Balance Weight (Includes 10,11)
10	2038016-s	1 Kit,locating Pin
11	2042302-s	1 Shoe, Guide
12	1215405-s	1 Clip, Hitch Pin
13	M-631015-s	1 Washer, Flat 6 mm
14	X-25-102-s	1 Washer, Flat 1/4"
15	2014402-s	1 Shaft, Governor Cross
16	2039302-s	1 Kit, Oil Pump Assembly (Includes 17,18)
17	2011202-s	2 Spacer, Oil Pump Screw
18	2008613-s	2 Screw, Oil Pump
19	2014406-s	1 Kit, Camshaft Center-Exhaust Assembly (Includes 20)
20	2046801-s	1 Washer, Thrust
21	2009001-s	2 Kit, Cam Lever Assembly (Includes 23)
22	2008606-s	2 Screw, Shd Thd FRM M6x1x26
23	2001004-s	1 Kit, Camshaft Assembly (Includes 24-26)
24	2008906-s	1 Spring, ACR
25	2004416-s	1 Weight, ACR
26	2046803-s	1 Washer, Thrust -ACR
27	2001004-s	2 Kit, Camshaft Assembly (Includes 28)
28	2046803-s	1 Washer, Thrust -ACR

Note: All Component Dimensions Given In U.s. Inches
 1 Inch = 25.4 Mm

IGNITION/ELECTRICAL

KEY NO.	PART NO.	DESCRIPTION
1	2016202-s	1 Screen, Grass
2	1208614-s	1 Screw, Flg M1.0x1.5x45
3	1246803-s	1 Washer, Flat 13/32"
4	2014604-s	1 Plate, Fan Mounting
5	2015701-s	1 Fan
6	X-42-15-s	1 Key, 3/16" X 5/8"
7	2002505-s	1 Flywheel
8	2008617-s	2 Screw, Skt Thd Frm M5x0.8x25
9	2015403-s	1 Clip, Stator Wire
10	237878-s	1 Kit, 15 Amp Stator
11	236602-s	1 Connector (3 Contact)
12	M-545020-s	2 Screw, Flg Thd Frm M5x0.8x20
13	41 40309-s	1 Rectifier-regulator
14	1213202-s	1 Plug, Spark
15	231285-s	2 Clip, Cable
16	2058401-s	1 Module, Ignition
17	M-561025-s	2 Screw, Skt Thd Frm M5x0.8x25
NOT ILLUSTRATED		
	2017601-s	1 Harness, Wiring - Six Pin

BLOWER HOUSING & BAFFLES

KEY NO.	PART NO.	DESCRIPTION
1	2002707-s	1 Kit, Blower Housing
2	2008606-s	4 Screw, Shd Thd Frm M6x1x26

AIR INTAKE/FILTRATION

KEY NO.	PART NO.	DESCRIPTION
1	2009604-s	1 Kit,Air Cleaner Cover (Includes 2)
2	25 341 04-s	2 Knob, Cover
3	2008302-s	1 Element, Air Cleaner
4	2009401-s	1 Kit, Air Cleaner Base (Includes 5,6)
5	12 041 02-s	1 Gasket, Air Cleaner Base
6	M-641060-s	1 Nut, Flg M6x1.0

Note: All Component Dimensions Given In U.s. Inches
 1 Inch = 25.4 Mm

TRACTOR - MODEL NO. 917.279240 (YTH20F42T), PRODUCT NO. 960 43 00-05

KOHLER ENGINE - MODEL NUMBER SV600-0002

STARTING SYSTEM

KEY NO.	PART NO.	DESCRIPTION
1	2009806-s	1 Starter Assy, Inertia Drive
2	2510031-s	2 Nut, Free Spinning Flg #10-24

Oil Pan/lubrication

KEY NO.	PART NO.	DESCRIPTION
1	2004002-s	1 Kit, Dipstick Blade (Includes 2)
2	2015301-s	2 O-ring
3	2000903-s	1 Kit,plate, Closure Bearing (Includes 4,10,11)
4	2513960-s	2 Plug, CTSK Pipe 1/8"
5	5205002-s	1 Filter, Oil
6	20 041 01-s	1 Gasket, Closure Plate
7	2009602-s	1 Kit, Oil Passage Cover (Includes 8)
8	20 041 02-s	1 Gasket, Oil Passage
9	2014403-s	1 Shaft, Governor Cross
10	2031003-s	1 Kit, Governor Gear Assy (Includes 11)
11	1238001-s	1 Pin, Governor Regulating
12	M-545013-s	6 Screw, Flg Thd Frm M5x0.8x13
13	M-851030-s	14 Screw, Flg M8x1.25x30
14	2003201-s	1 Seal, Oil
15	2515502-s	1 Connector, 90° Hose

ENGINE CONTROLS

KEY NO.	PART NO.	DESCRIPTION
1	2053605-s	1 Kit, Speed Control Assembly (Includes 2,3,6-9)
2	2008610-s	1 Screw, Phi Thd Frm M4x0.7x25
3	1208911-s	1 Spring, Speed Control (Short)
4	1223701-s	1 Clamp, Cable
5	2408643-s	1 Screw, Lbd Thd Frm M5x0.8x16
6	M-664020-s	2 Screw, Lbd Skt M6x1.0x20
7	1208911-s	2 Spring, Speed Control (Short)
8	2008610-s	2 Screw, Phi Thd Frm M4x0.7x25
9	2008911-s	1 Spring, Governor
10	2009002-s	1 Lever, Governor
11	52 211 04-s	1 Bolt, Rd Hd Sq Nck 1/4-20x1"
12	X-22-11-5	1 Washer, Int Tooth Lock 1/4"
13	1210007-s	1 Nut, Hex Flg 1/4-20"
14	2515811-s	1 Bushing, Throttle Linkage
15	2007904-s	1 Linkage, Throttle
16	2515808-s	1 Bushing, Linkage Retaining
17	2008910-s	1 Spring, Linkage
18	2007905-s	1 Linkage, Choke

Note: All Component Dimensions Given In U.s. Inches
1 Inch = 25.4 Mm

CRANKSHAFT

KEY NO.	PART NO.	DESCRIPTION
1	2001420-s	1 Kit, Crankshaft
2	2004312-s	1 Gear, Crankshaft
3	X-42-15-s	1 Key, 3/16" X 5/8"

EXHAUST

KEY NO.	PART NO.	DESCRIPTION
1	2507204-s	2 Stud, M8x1.25x33
Not illustrated		
--	2511339-s	1 Decal, Clear
--	2011336-s	1 Decal, 20 Hp
--	2011337-s	1 Decal, Wing Set
--	20 522 01	1 5v590/600 Short Block
--	2075505-s	1 Gasket Set

FUEL SYSTEM

KEY NO.	PART NO.	DESCRIPTION
1	20 041 07-s	1 Gasket, Heat Deflector
2	2033201-s	1 Insert, Intake Port
3	2026503-s	1 Deflector, Heat
4	M-651020-s	1 Screw, Flg M6x1.0x20
5	2085314-s	1 Kit, Carburetor W/gaskets (Includes 6,7)
6	12 041 02-s	1 Gasket, Air Cleaner Base
7	12 041 01-s	1 Gasket, Carburetor
8	2007205-s	2 Stud, M6x1.0x100
9	M-641060-s	2 Nut, Flg M6x1.0
10	M-545010-s	2 Screw, Flg Thd Frm M5x0.8x10
11	2012602-s	1 Bracket, Fuel Pump Mounting
12	2439316-s	1 Pump, Fuel
13	M-645016-s	2 Screw, Flg Thd Frm M6x1.0x16
14	2523714-s	6 Clamp, Hose
15	2505022-s	1 Filter, Fuel
16	25 111 34-s	2 Line, Fuel (24"-cut To Length)
17	5235320-s	1 Line, Fuel 10"
Not Illustrated		
	2545405-s	1 Tie
	X-22-11-5	1 Washer, Int Tooth Lock 1/4"
	25 431 12-s	1 Sleeve, Fuel Line
	12755110-s	1 Kit, Choke Shaft
	1275702-s	1 Kit, Repair Float
	1275703-s	1 Kit, Repair Carburetor
	1275733-s	1 Kit, Repair Solenoid
	1275737-s	1 Kit, Repair Bowl Replacment
	2075506-s	1 Kit, High Altitude (5000 Ft)
	2075507-s	1 Kit, High Altitude (10,000 Ft)

NOTE: All component dimensions given in U.S. inches
1 inch = 25.4 mm