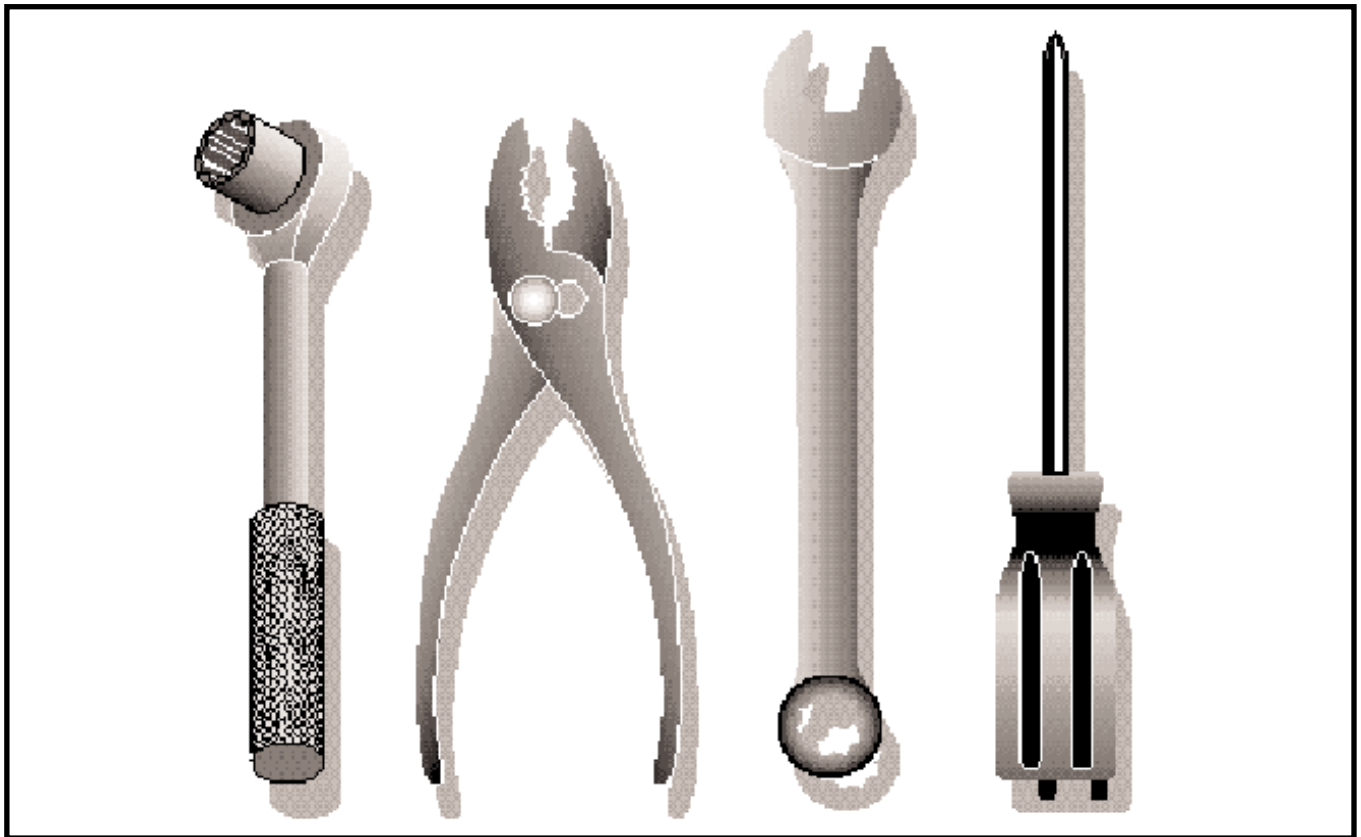


Ride Mower

## GTH2448T

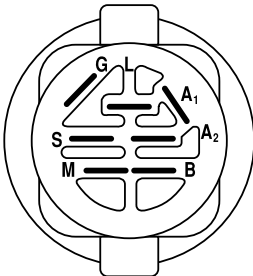
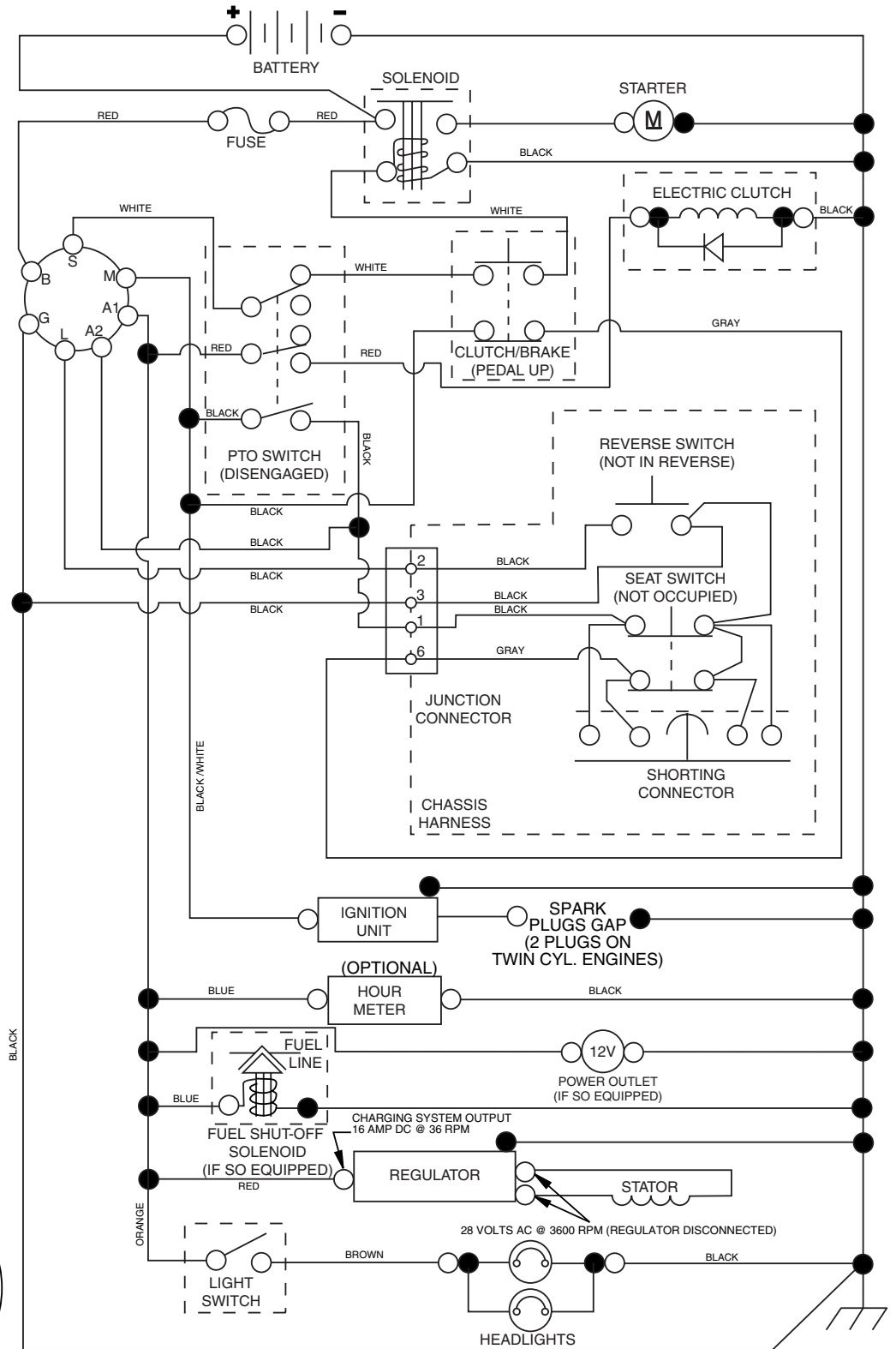
(917.279260), 960430009





# TRACTOR - MODEL NO. 917.279260 (GTH2448T), PRODUCT NO. 960 43 00-09 SCHEMATIC

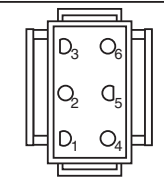
02929-194276\_Regulated-TEX



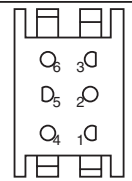
**IGNITION SWITCH**

POSITION	CIRCUIT	"MAKE"
OFF	M+G+A1	
RUN/OVERRIDE	B+A1	
RUN	B+A1	L+A2
START	B + S + A1	

02929

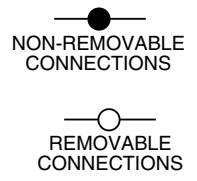


CHASSIS HARNESS CONNECTOR (MATING SIDE)

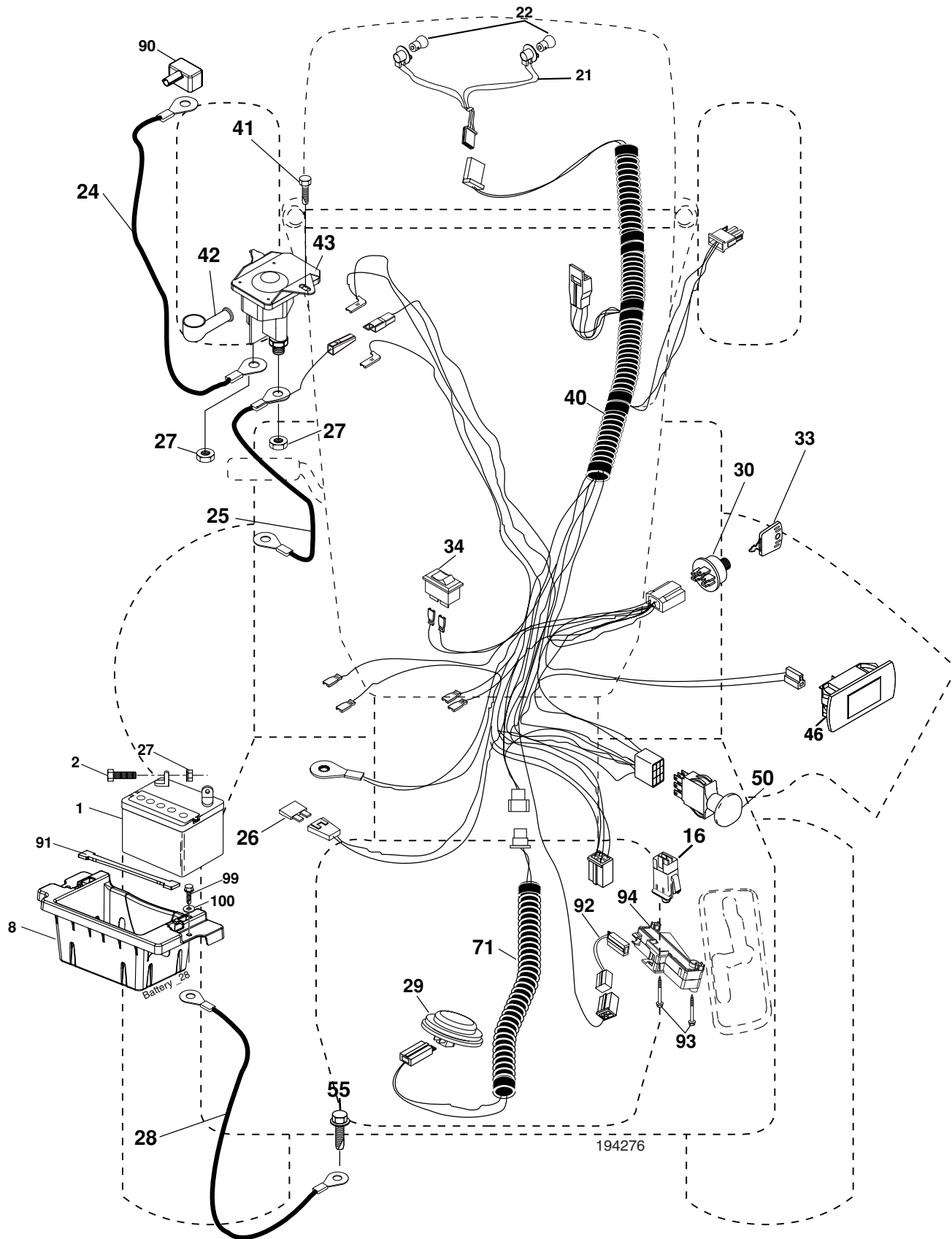


DASH HARNESS CONNECTOR (MATING SIDE)

**WIRING INSULATED CLIPS**  
NOTE: IF WIRING INSULATED CLIPS WERE REMOVED FOR SERVICING OF UNIT, THEY SHOULD BE REPLACED TO PROPERLY SECURE YOUR WIRING.



**TRACTOR - MODEL NO. 917.279260 (GTH2448T), PRODUCT NO. 960 43 00-09  
ELECTRICAL**

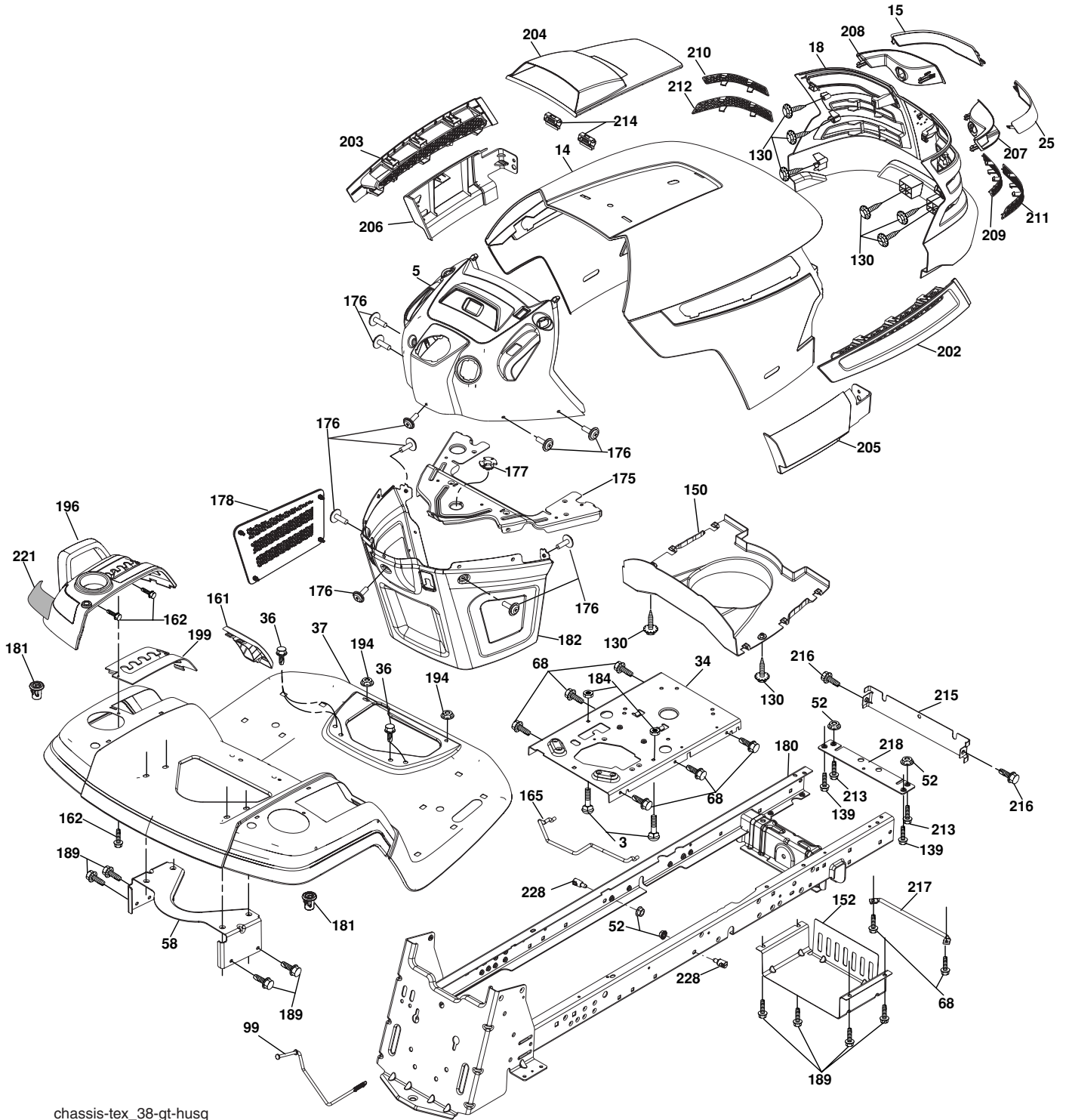


**TRACTOR - MODEL NO. 917.279260 (GTH2448T), PRODUCT NO. 960 43 00-09  
ELECTRICAL**

<b>KEY NO.</b>	<b>PART NO.</b>	<b>DESCRIPTION</b>
1	532 14 49-27	Battery
2	874 76 04-12	Bolt Hex Hd 1/4-20 unc x 3/4
8	532 18 64-91	Battery Box
16	532 17 61-38	Switch Interlock
21	532 18 37-59	Harness Socket Light
22	532 00 41-52	Bulb, Light # 1156
24	532 40 02-53	Cable Battery
25	532 19 88-93	Cable Starter
26	532 17 51-58	Fuse
27	873 51 04-00	Nut Keps Hex 1/4-20 unc
28	532 14 54-91	Cable Ground 21" Blk 6 Ga.
29	532 40 15-45	Switch Seat
30	532 19 33-50	Switch Ign
33	532 14 04-01	Key Ign Molded Generic
34	532 11 07-12	Switch Light/Reset
40	532 40 11-05	Harness Ign
41	871 72 04-08	Screw Thd Cut 1/4-20 x 1/2
42	532 13 15-63	Cover Terminal Red
43	532 19 25-07	Solenoid
46	532 19 81-38	Gauge Hourmeter
50	532 17 46-51	Switch PTO
55	817 49 05-12	Screw Thdrol 5/16-18 x 3/4
59	532 40 03-03	Outlet 12-Volt
71	532 19 42-76	Harness Ign. Dash
90	532 40 07-24	Cover Terminal Battery
91	532 19 02-70	Strap Battery
92	532 19 66-15	Harness Pigtail Consle ROS
93	532 19 25-40	Screw Plastite 10-14 x 2.0
94	532 19 18-34	Module Reverse ROS
99	817 67 04-12	Screw Hexwsh Thdrol 1/4-20 x 3/4
100	819 09 14-16	Washer 9/32 x 7/8 x 16 Ga.

**NOTE:** All component dimensions given in U.S. inches  
1 inch = 25.4 mm

# TRACTOR - MODEL NO. 917.279260 (GTH2448T), PRODUCT NO. 960 43 00-09 CHASSIS



chassis-tex\_38-gt-husq

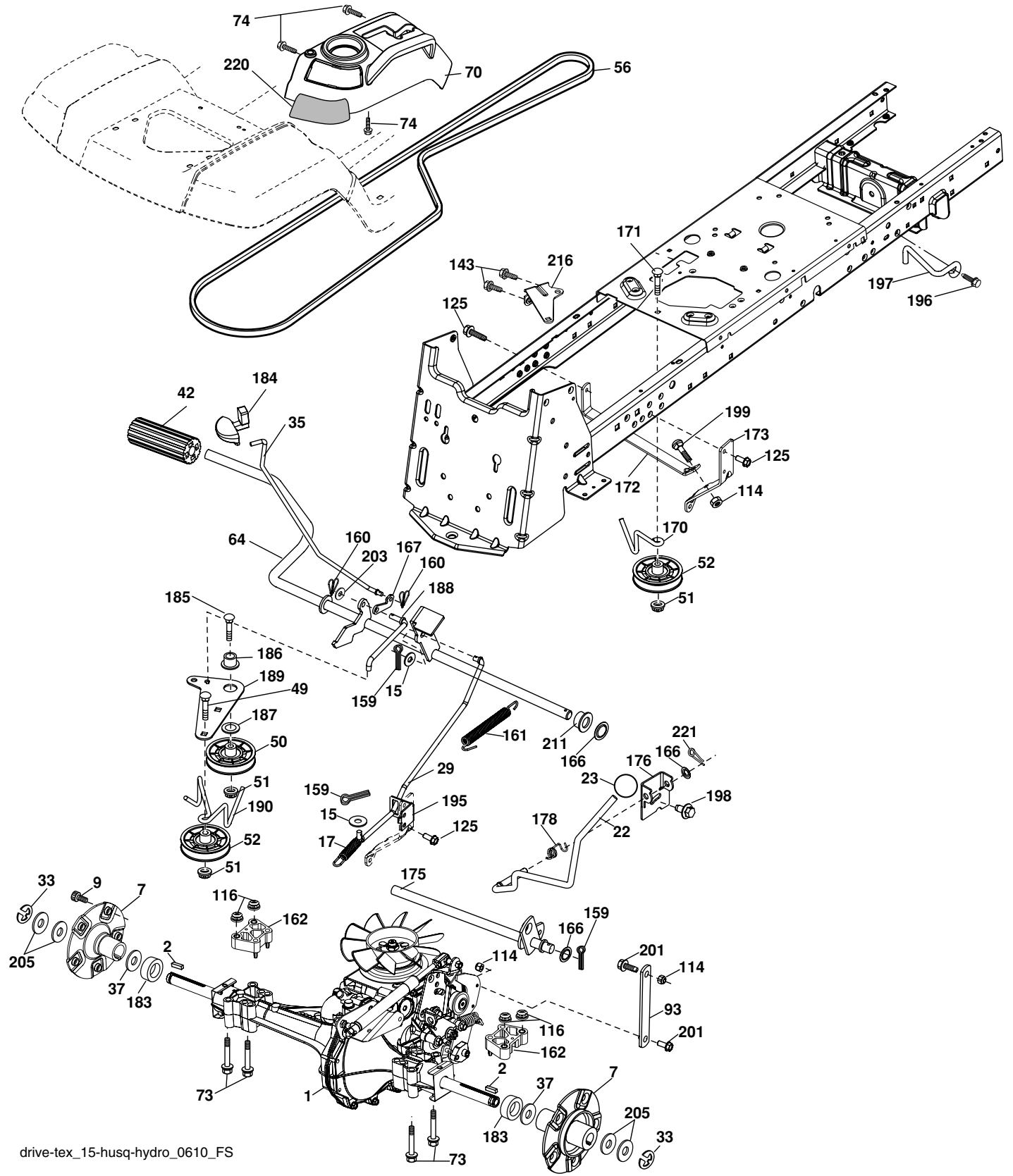
**TRACTOR - MODEL NO. 917.279260 (GTH2448T), PRODUCT NO. 960 43 00-09  
CHASSIS**

KEY NO.	PART NO.	DESCRIPTION
5	532 40 18-23	Dash
14	532 40 18-24	Hood
15	532 19 89-07	Lens LH
18	532 40 48-21	Grille
25	532 19 89-06	Lens RH
34	532 19 61-25	Plate Engine
36	817 06 05-12	Screw 5/16-18 x 3/4
37	532 40 18-25	Fender
52	873 68 05-00	Nut Crown Lock 5/16-18
58	532 19 43-14	Bracket Fender
68	817 49 05-08	Screw 5/16-18 x 1/2
99	532 19 82-53	Rod Bypass Asm.
130	532 19 16-11	Screw 10 x 3/4 Single Lead Hex
150	532 19 85-13	Duct Heat Hood
152	532 19 63-90	Shield Browning/Debris
161	532 40 18-26	Console Fuel Window
162	532 14 24-32	Screw Hex Wsh Hi-Lo 1/4 x 1/2
165	532 19 68-26	Bracket Support Tank
175	532 19 63-04	Crossmember
176	532 40 07-76	Screw 10-24 x 5/8 Wshd Qdrx
177	532 19 52-27	Bushing Steering
178	532 19 97-82	Cargo Asm. Net
179	532 40 35-71	Plug N/Cruise
180	532 40 15-59	Chassis
181	532 40 30-25	Bushing Mtg. Fender Crgo.
182	532 19 47-87	Dash Lower
184	532 19 57-80	Spacer Fender

KEY NO.	PART NO.	DESCRIPTION
185	874 78 05-20	Bolt Fin Hex 5/16-18 unc x 1-1/4
189	817 00 05-12	Screw 5/16-18 x 3/4
194	873 90 05-00	Nut Lock Hex Flange 5/16-18
196	532 40 02-99	Console Asm. Deck Lift
199	532 19 82-59	Plate Deck Lift
202	532 40 30-48	Vent Side Hood RH
203	532 40 30-76	Vent Side Hood LH
204	532 19 89-04	Vent Asm Hood Top
205	532 40 17-09	Skirt Hood Side RH
206	532 40 17-11	Skirt Hood Side LH
207	532 19 71-98	Bezel RH
208	532 19 71-99	Bezel LH
209	532 19 91-30	Insert Hex Top RH
210	532 19 91-31	Insert Hex Top LH
211	532 19 91-32	Insert Hex Bottom RH
212	532 19 91-33	Insert Hex Bottom LH
213	874 76 05-12	Bolt Hex Hd 5/16-18 unc x 3/4
214	532 19 91-45	Clip Retainer
215	532 19 80-43	Cover Chassis Front
216	817 67 05-08	Screw 5/16-18 x 1/2
217	532 15 65-24	Rod Pivot
218	532 19 63-95	Hood Stop
221	532 19 89-09	Reflector LH
228	532 19 51-61	Stud Fastner

**NOTE:** All component dimensions given in U.S. inches  
1 inch = 25.4 mm

**TRACTOR - MODEL NO. 917.279260 (GTH2448T), PRODUCT NO. 960 43 00-09  
DRIVE**



drive-tex\_15-husq-hydro\_0610\_FS



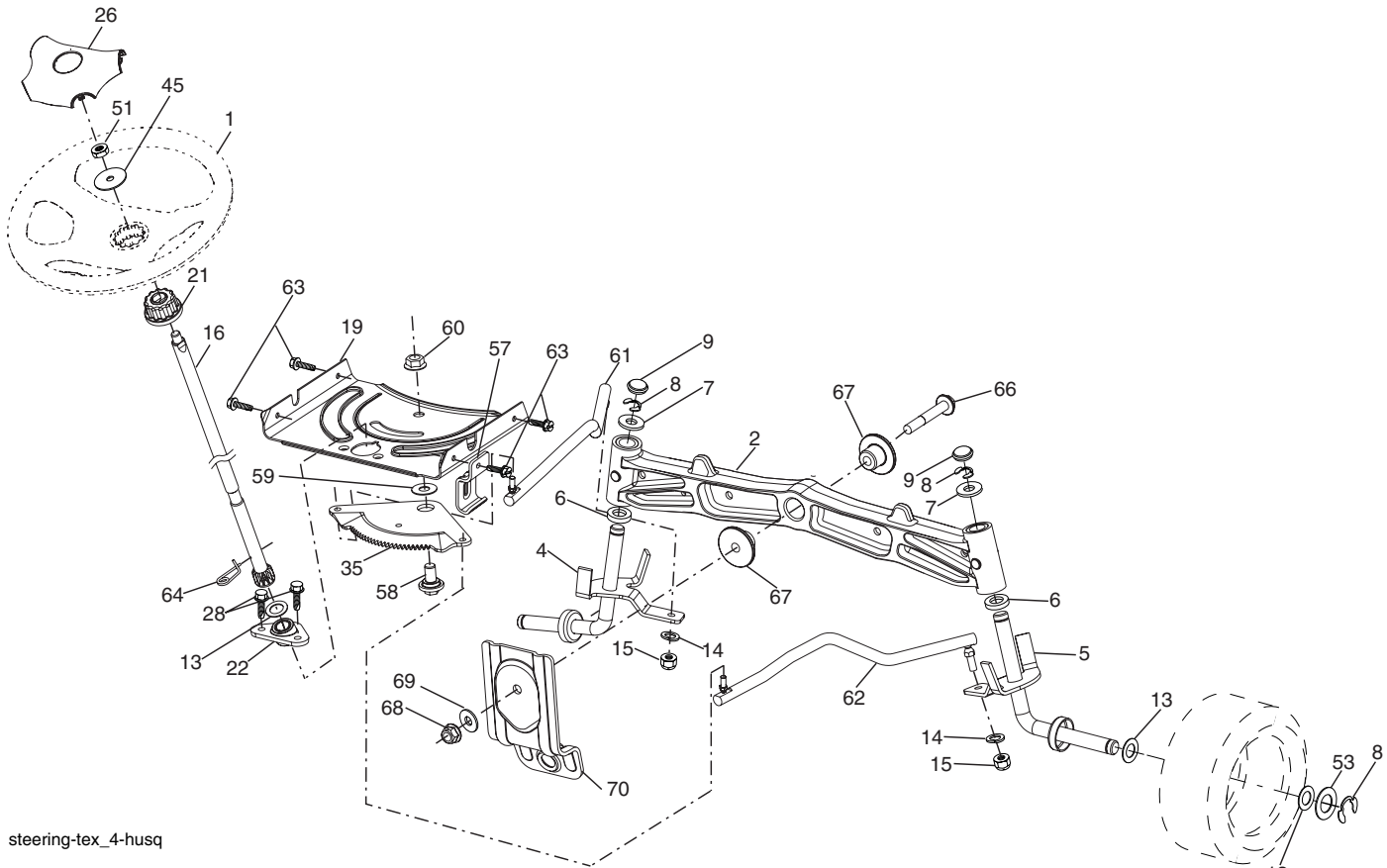
**TRACTOR - MODEL NO. 917.279260 (GTH2448T), PRODUCT NO. 960 43 00-09  
DRIVE**

KEY NO.	PART NO.	DESCRIPTION
1	-----	Transaxle, Hydro 316-0610 (See Breakdown)
2	532 18 62-11	Key 1/4 x 2.5
7	532 19 98-44	Hub Asm. Wheel
9	532 14 00-80	Bolt Hub Wheel
15	819 13 13-16	Washer 13/32 x 13/16 x 16 Ga.
17	532 19 72-96	Spring, Brake
22	532 19 73-29	Shifter Rod
23	532 14 08-45	Knob
29	532 19 94-67	Rod, Brake
33	812 00 00-60	Ring E
35	532 19 95-91	Rod, Brake, Park
37	532 12 17-49	Washer
42	532 12 48-72	Cover, Foot Pedal
49	872 11 06-14	Bolt
50	532 19 43-27	Pulley Idler Flat
51	873 90 06-00	Lock Nut 3/8-16
52	532 19 43-26	Idler V-Groove 910" Offset
56	532 14 02-18	V-Belt, Drive
64	532 19 62-00	Shaft Asm. Pedal Brake Control
70	532 40 02-98	Control Asm.
73	874 49 05-60	Bolt Hex Flghd 5/16-18 x 3.75
74	532 14 24-32	Screw 1/4 x 1/2
93	532 19 82-54	Link Shift
114	873 80 05-00	Nut Lock Hex w/Insert 5/16-18 unc
116	873 90 05-00	Nut Lock Hex Flange 5/16-18
125	817 00 05-12	Screw 5/16-18 x 3/4
143	817 49 05-08	Screw Thdrol 5/16-18 x 1/2
159	876 02 04-12	Pin Cotter 1/8 x 3/4
160	532 16 94-84	Retainer Clip
161	532 19 54-03	Spring, Return, Clutch
162	532 19 57-85	Spacer Trans.
166	532 19 72-90	Nut Push .625

KEY NO.	PART NO.	DESCRIPTION
167	532 19 62-11	Latch Brake Parking
170	532 19 43-22	Keeper Belt Centerspan
171	872 11 06-16	Bolt
172	532 19 76-56	Strap Torque LH
173	532 19 74-24	Strap Torque RH
175	532 19 76-53	Shaft Asm Shift
176	532 19 62-14	Arm, Shift Rod
178	532 19 74-56	Spring Shift
183	532 40 04-24	Spacer Split
184	532 40 31-18	Handle Parking Brake
185	872 11 06-20	Bolt Rdhd Sqnk 3/8-16 x 2-1/2
186	532 19 43-21	Spacer Retainer
187	819 13 32-10	Washer
188	532 19 43-23	Link Clutch Ground Drive
189	532 19 43-17	Bellcrank Ground Drive
190	532 19 43-18	Keeper Bellcrank Ground Dr.
195	532 19 80-12	Bracket Rod Brake
196	817 00 06-16	Screw 3/8-16 x 1
197	532 19 97-69	Bracket Clutch Anti-Rotation
198	532 19 94-96	Screw 7/16-14 x 7/8 Flghd
199	872 14 05-08	Bolt Rdhd Sqnk 5/16-18 unc x 1
201	532 16 96-12	Bolt Shoulder 5/16-18 unc
203	819 11 11-16	Washer 11/32 x 11/16 x 16 Ga.
205	532 12 17-48	Washer
211	532 19 62-12	Bushing
216	532 19 61-31	Bracket Pulley Idler
220	532 19 89-08	Reflector RH
221	532 40 31-87	Retainer Spring Clip Handle

**NOTE:** All component dimensions given in U.S. inches  
1 inch = 25.4 mm

**TRACTOR - MODEL NO. 917.279260 (GTH2448T), PRODUCT NO. 960 43 00-09**  
**STEERING ASSEMBLY**



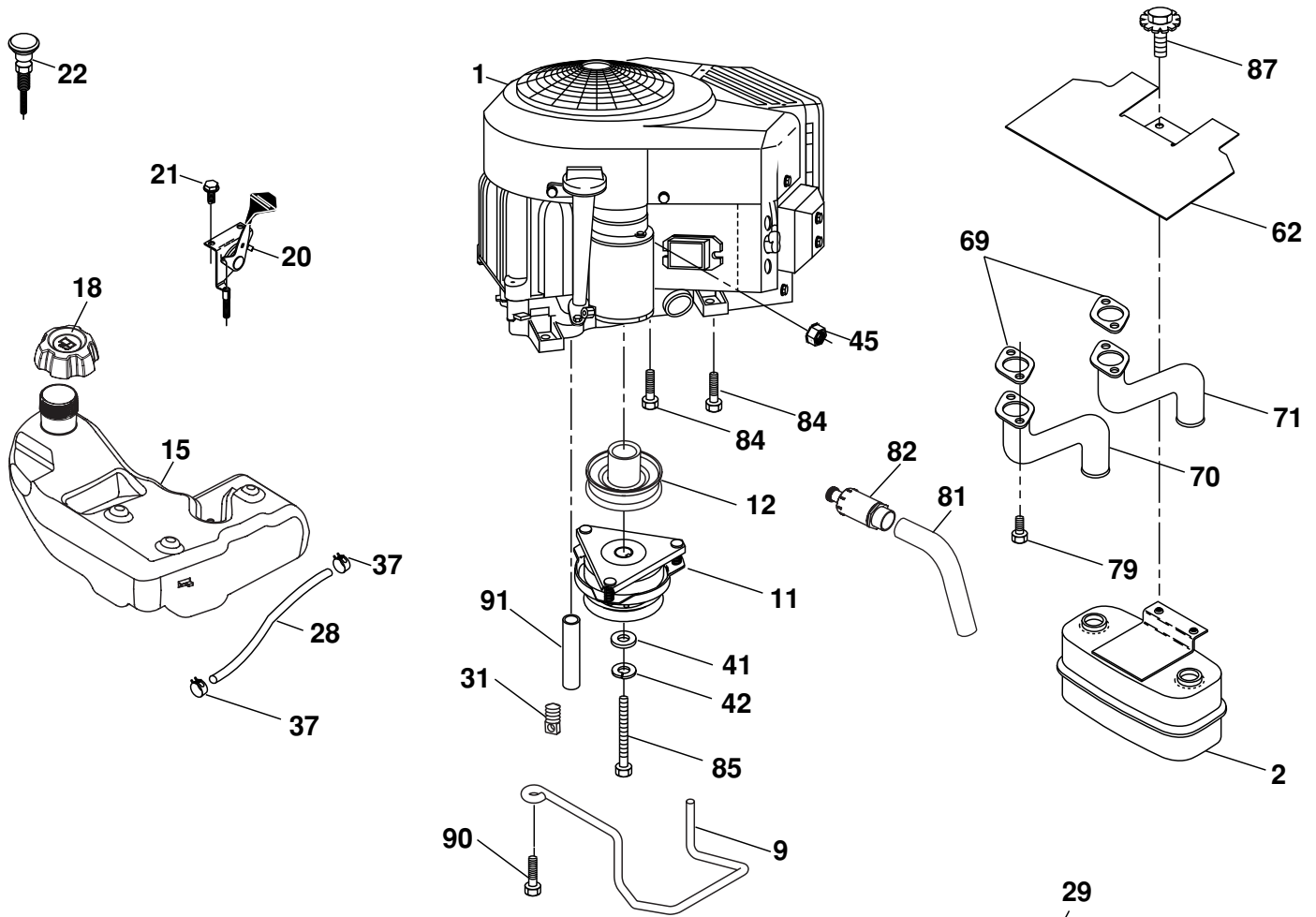
steering-tex\_4-husq

KEY NO.	PART NO.	DESCRIPTION
1	532 19 39-43	Wheel, Steering
2	532 19 59-68	Axle Asm., Front
4	532 19 79-37	Spindle Asm., LH
5	532 19 79-36	Spindle Asm., RH
6	532 12 49-31	Bearing, Race Thrust Harden
7	532 12 17-48	Washer 25/32 x 1-5/8 x 16 Ga.
8	812 00 00-29	Ring, Klip #T5304-75
9	532 12 12-32	Cap, Spindle
13	532 12 17-49	Washer 25/32 x 1-1/4 x 16 Ga.
14	810 04 06-00	Washer, Lock Hvy Hlcl Spr 3/8
15	873 54 06-00	Nut, Crown Lock 3/8-24 unf
16	532 19 47-46	Shaft Steering
19	532 19 47-29	Plate Steering
21	532 18 67-37	Adapter, Wheel Steering
22	532 19 48-45	Bushing, Strg. Blk
26	532 19 36-52	Insert, Wheel Steering
28	817 00 06-12	Screw 3/8-16 x 3/4
35	532 19 47-32	Gear, Sector Plate
45	819 18 38-12	Washer 9/16 x 2-3/8 x 12 Ga.

KEY NO.	PART NO.	DESCRIPTION
51	873 94 08-00	Nut Hex Jam Toplock 1/2-20 unf
53	532 18 89-67	Washer Hardened .793 x 1.637 x .060
57	532 19 72-46	Bracket Upstop
58	532 19 47-47	Bolt Shoulder Sector Pivot CFM
59	532 19 47-48	Washer Thrust Sector Steering
60	873 97 10-00	Nut Flange Lock 5/8-11
61	532 19 47-40	Draglink LH
62	532 19 47-41	Draglink, RH
63	817 00 05-12	Screw 5/16-18 x 3/4
64	532 19 98-49	Retainer Clip Spring Steering
66	871 02 07-48	Bolt Hex Fghd 7/16-14 x 3 Serr
67	532 19 47-37	Bushing PM Front Axle
68	873 90 07-00	Nut Lock Flange 7/16-14 Gr. 5
69	532 19 91-62	Washer 1.5 x .505 x .118
70	532 19 61-97	Bracket Deck Susp. Front

**NOTE:** All component dimensions given in U.S. inches  
 1 inch = 25.4 mm

# TRACTOR - MODEL NO. 917.279260 (GTH2448T), PRODUCT NO. 960 43 00-09 ENGINE



## SPARK ARRESTER KIT

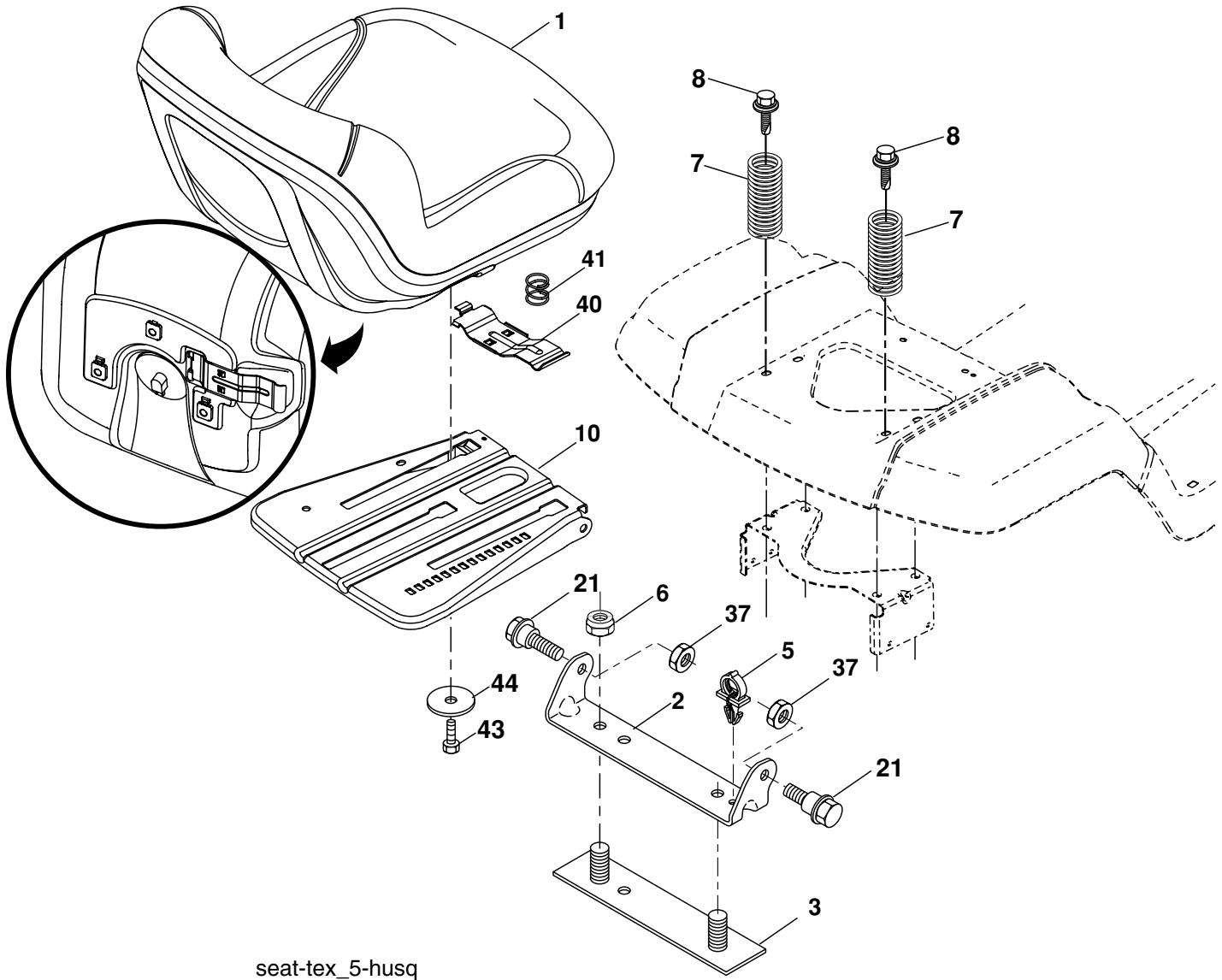
engine-tex\_7-vgt

KEY NO.	PART NO.	DESCRIPTION
1	-----	Engine Briggs Model No. 445677 0476-E1 (See Breakdown)
2	532 14 97-23	Muffler
9	532 19 43-19	Keeper Belt Engine
11	532 17 93-35	Clutch Electric
12	532 40 24-63	Pulley Engine
15	532 19 34-99	Tank Fuel 4.0
18	532 19 42-67	Cap Asm
20	532 17 83-85	Control Throttle
21	532 19 16-11	Screw 10 x 3/4 Single Lead Hex
22	532 19 15-96	Control Choke
28	532 40 11-35	Fuel Line
29	532 13 71-80	Spark Arrester Kit
31	532 14 50-06	Clip Push-In
37	532 12 34-87	Clamp Hose
41	532 12 61-97	Washer 1-1/2 OD x 15/32 ID x .250
42	810 04 07-00	Washer Lock 7/16

KEY NO.	PART NO.	DESCRIPTION
45	873 51 04-00	Nut Keps Hex 1/4-20 unc
62	532 14 66-29	Shield Heat Muffler
69	532 16 53-91	Gasket
70	532 15 99-55	Tube Exhaust LH
71	532 16 05-89	Tube Exhaust RH
79	532 18 39-06	Screw Socket Head 5/16-18 x 1
81	532 14 84-56	Tube Drain Oil Easy
82	532 18 16-54	Plug Drain Oil
84	817 06 06-20	Screw 3/8-16 x 1-1/4
85	532 17 99-53	Bolt Hex 7/16-20 x 3.75 Gr. 5
87	532 19 82-39	Bolt 5/16-18 unc x 1 w/Sems
90	817 00 06-16	Screw 3/8-16 x 1
91	532 18 74-95	Bushing

**NOTE:** All component dimensions given in U.S. inches  
1 inch = 25.4 mm

**TRACTOR - MODEL NO. 917.279260 (GTH2448T), PRODUCT NO. 960 43 00-09  
SEAT ASSEMBLY**



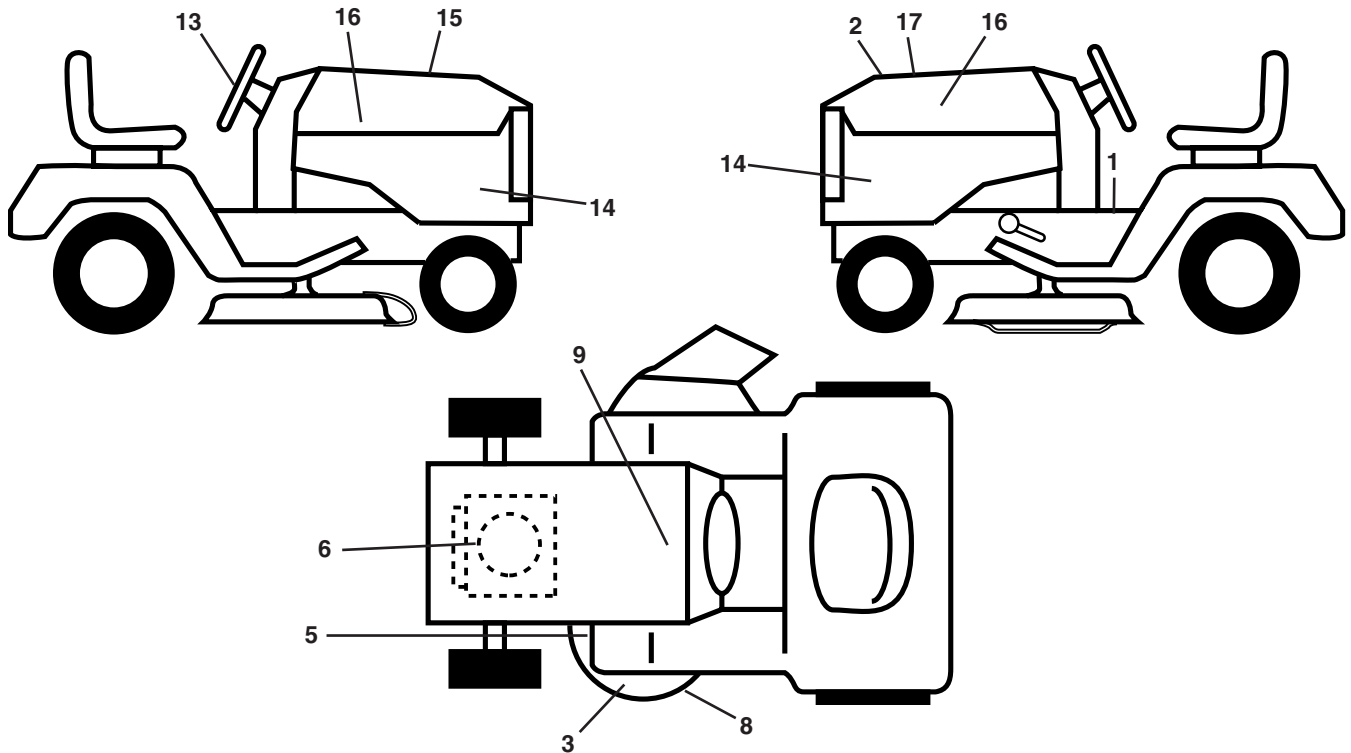
seat-tex\_5-husq

KEY NO.	PART NO.	DESCRIPTION
1	532 19 75-26	Seat
2	532 18 01-66	Bracket Pivot Fender
3	532 14 06-75	Strap, Asm Fender
5	532 14 50-06	Clip, Push In, Hinged
6	873 80 06-00	Nut, Lock W/Ins. 3/8-16 unc
7	532 12 41-81	Spring, Seat Cprsn
8	532 17 18-77	Bolt 5/16-18 uncx 3/4 w/Sems
10	532 19 69-77	Pan, Seat
21	532 17 18-52	Bolt, Shoulder 5/16-18

KEY NO.	PART NO.	DESCRIPTION
37	873 80 05-00	Nut, Lock 5/16-18 unc
40	532 19 76-61	Handle Slide Seat
41	532 19 82-00	Spring Latch Seat
43	874 76 06-12	Bolt Fin Hex 3/8-16 unc x 3/4
44	819 13 38-12	Washer 13/32 x 2-3/8 x 12 Ga.

**NOTE:** All component dimensions given in U.S. inches  
1 inch = 25.4 mm

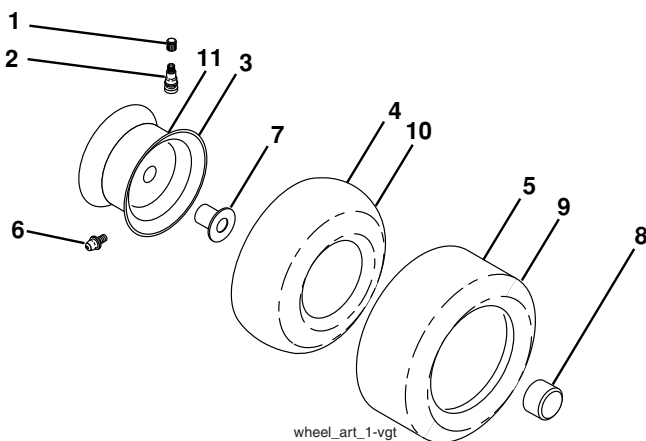
**TRACTOR - MODEL NO. 917.279260 (GTH2448T), PRODUCT NO. 960 43 00-09  
DECALS**



KEY NO.	PART NO.	DESCRIPTION
1	532 19 91-14	Decal, Operator's
2	532 40 21-28	Decal, Hood Insert
3	532 17 05-63	Decal, Warning
5	532 17 85-02	Decal, Caution
6	532 19 16-52	Decal, Eng. HP
8	532 19 87-85	Decal, Mower Sch.
9	532 14 50-05	Decal, Battery Dnge/Poi
13	532 40 44-84	Decal, Steering Whl

KEY NO.	PART NO.	DESCRIPTION
14	532 40 37-99	Decal, Panel Side
15	532 18 09-41	Decal, Cust. Resp.
16	532 40 28-32	Decal, Hood Logo
17	532 40 20-26	Decal, Replacement
--	532 16 69-60	Decal, Bypass
--	532 40 17-71	Pad, Footrest, LH
--	532 40 17-70	Pad, Footrest, RH
--	532 40 43-97	Manual, Owner's (Eng)
--	532 40 43-98	Manual, Owner's (Fr)

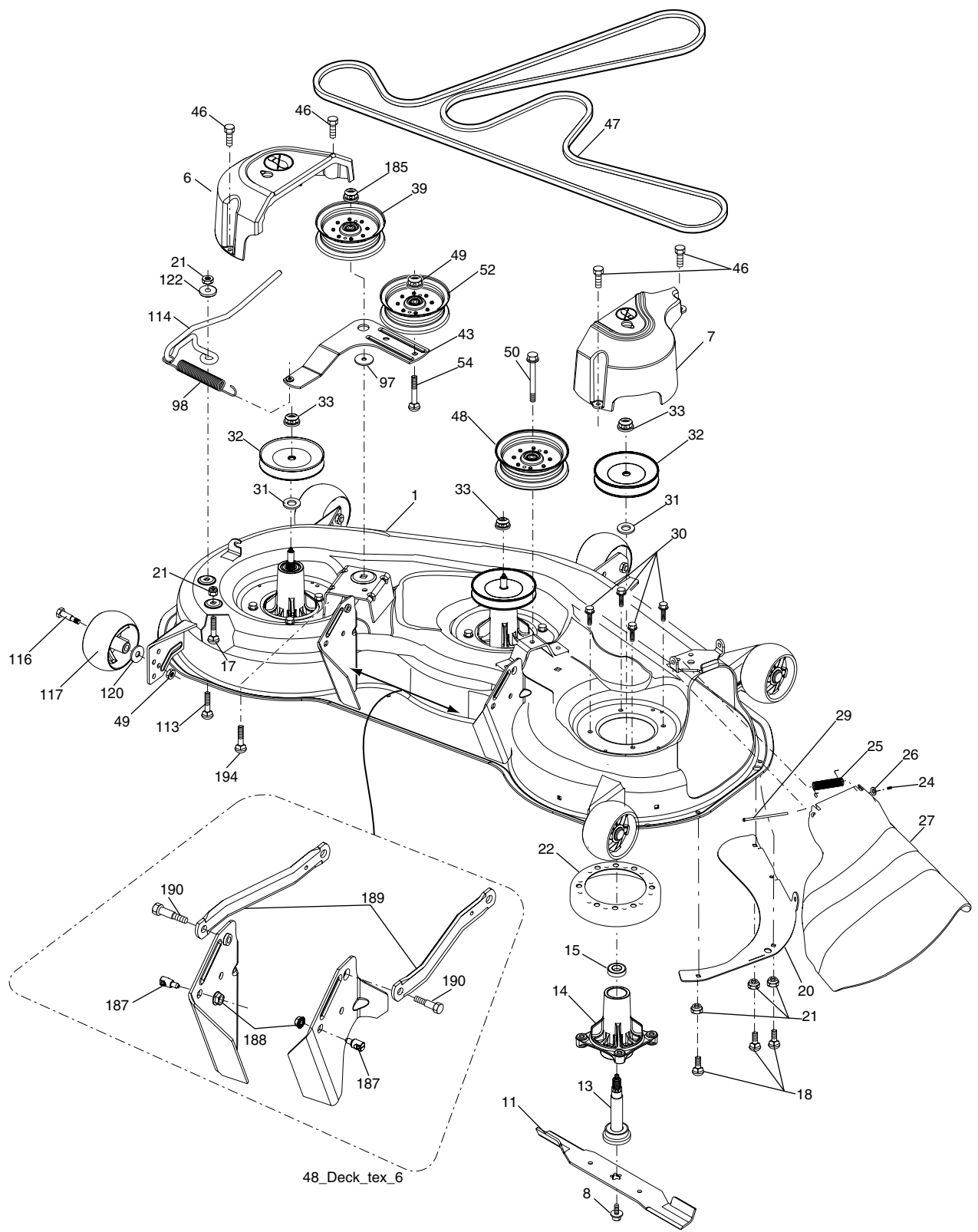
**WHEELS AND TIRES**



KEY NO.	PART NO.	DESCRIPTION
1	532 05 91-92	Cap, Valve, Tire
2	532 06 51-39	Stem, Valve
3	532 14 45-09	Rim Assembly, Front
4	532 05 99-04	Tube, Front (Service Item Only)
5	532 10 62-30	Tire, Front
6	532 12 49-57	Fitting, Grease (Front Wheel Only)
7	532 12 49-59	Bearing, Flange (Front Wheel Only)
8	532 17 50-39	Cap, Axle (Front Wheel Only)
9	532 18 47-08	Tire, Rear
10	532 12 49-26	Tube, Rear (Service Item Only)
11	532 40 17-82	Rim Assembly, Rear
--	532 14 43-34	Sealant, Tire (10 oz. Tube)

**NOTE:** All component dimensions given in U.S. inches  
1 inch = 25.4 mm

# TRACTOR - MODEL NO. 917.279260 (GTH2448T), PRODUCT NO. 960 43 00-09 MOWER DECK



48\_Deck\_tex\_6

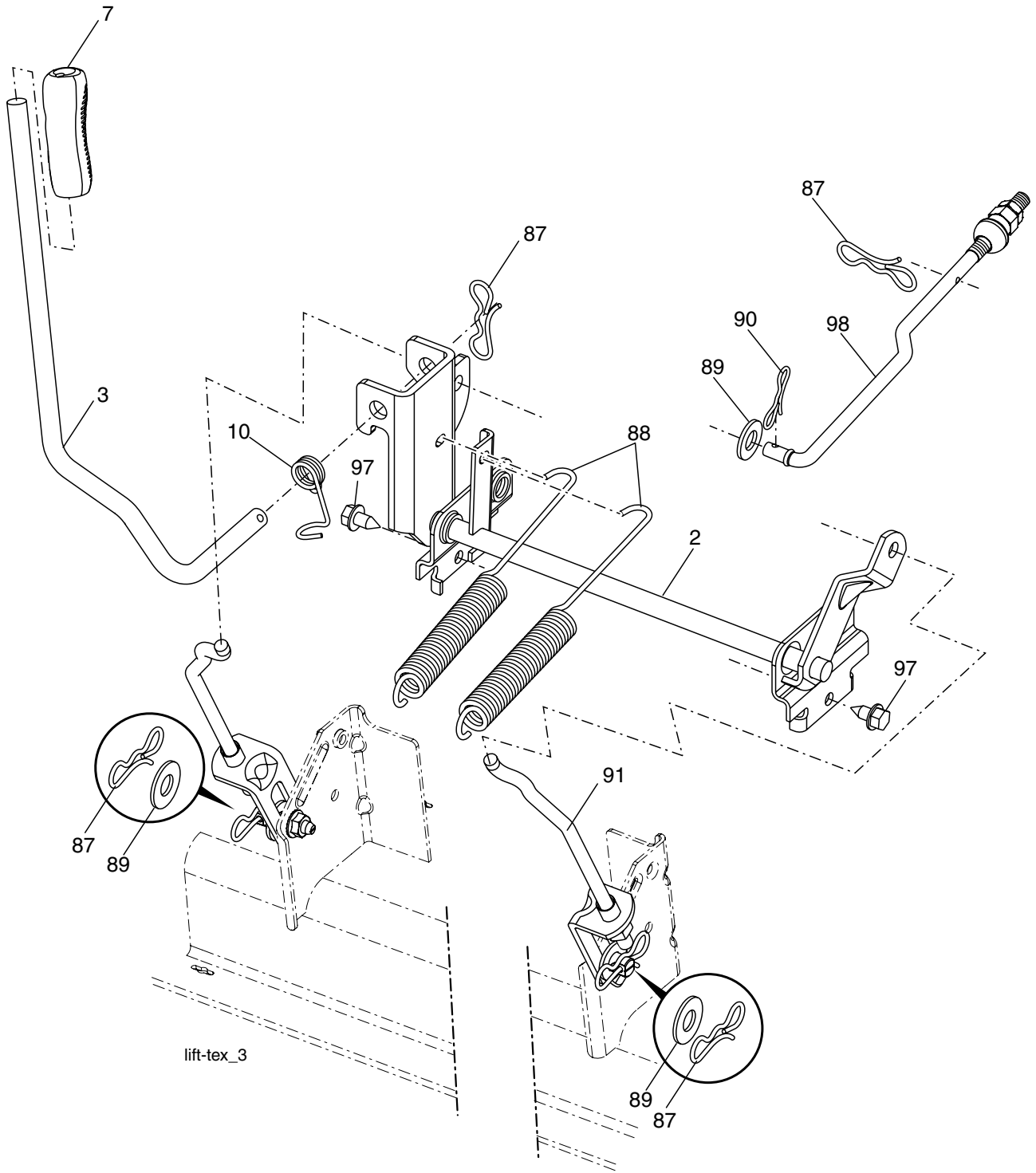
**TRACTOR - MODEL NO. 917.279260 (GTH2448T), PRODUCT NO. 960 43 00-09  
MOWER DECK**

KEY NO.	PART NO.	DESCRIPTION
1	532 40 35-82	Deck Weldment Mower
6	532 19 72-48	Cover Mandrel LH
7	532 19 91-02	Cover Mandrel RH
8	532 17 43-65	Bolt 7/16 Asm. Blade
11	532 18 00-54	Blade High Lift
13	532 18 72-91	Shaft Asm. w/Lower Bearing
14	532 18 72-81	Housing, Mandrel
15	532 11 04-85	Bearing, Ball, Mandrel
17	872 11 05-05	Bolt Carriage 5/16-18 x 5/8
18	872 14 05-05	Bolt RdHd 5/16-18 unc x 5/8
20	532 17 43-78	Baffle Vortex Mower
21	873 68 05-00	Nut, Crownlock 5/16-18 unc
22	532 17 44-93	Stripper Mandrel Deck
24	532 10 53-04	Cap Sleeve
25	532 17 81-02	Spring, Torsion
26	532 11 04-52	Nut, Push
27	532 18 17-07	Deflector Shield
29	532 13 14-91	Rod, Hinge
30	532 17 39-84	Screw, Thdroll Washer Head
31	532 18 76-90	Washer, Spacer Mower Vented
32	532 17 34-35	Pulley, Mandrel
33	532 40 02-34	Nut, Flg. Top Lock
39	532 19 61-04	Pulley, Idler, Stationary LH
43	532 19 60-65	Arm, Idler
46	532 13 77-29	Screw, Thdroll. 1/4-20 x 5/8
47	532 19 72-42	Belt Deck Drive

KEY NO.	PART NO.	DESCRIPTION
48	532 17 79-68	Pulley Idler Clutching
49	873 90 06-00	Nut, Lock Flg. 3/8-16 unc
50	872 11 06-12	Bolt Carriage 3/8-16 x 1-1/2 Gr. 5
52	532 19 61-06	Pulley Idler
54	817 49 06-36	Screw 3/8-16 x 2-1/4
97	532 17 85-15	Washer Hardened
98	532 19 61-05	Spring Drive
113	872 11 05-08	Bolt Rdhd Sqnk 5/16-18 x 3/4
114	532 19 74-51	Rod Tension Relief
116	532 19 34-06	Bolt, Shoulder
117	532 17 48-73	Gauge Wheel
120	819 13 20-12	Washer 13/32 x 1-1/4 x 12 Ga.
122	532 18 75-57	Bushing Tension Relief
185	873 90 07-00	Nut Lock Flange 7/16-14 Gr. 5
187	532 19 51-61	Stud Fastener w/"D" Anti-Rotation
188	873 90 05-00	Nut Lock Hex Flange
189	532 19 51-85	Arm Susp. Mower Rear
190	532 19 65-39	Bolt Shoulder
194	872 14 07-16	Bolt Carr Sqnk 7/16-24 x 2
--	532 18 72-92	Mandrel Asm. Service (Includes Key Nos. 13-15 and 33)
--	532 40 12-38	Replacement Mower, Complete

**NOTE:** All component dimensions given in U.S. inches  
1 inch = 25.4 mm

**TRACTOR - MODEL NO. 917.279260 (GTH2448T), PRODUCT NO. 960 43 00-09**  
**MOWER LIFT**





**TRACTOR - MODEL NO. 917.279260 (GTH2448T), PRODUCT NO. 960 43 00-09  
MOWER LIFT**

<b>KEY NO.</b>	<b>PART NO.</b>	<b>DESCRIPTION</b>
2	532 19 52-23	Shaft Asm., Lift
3	532 19 52-30	Lever Asm., Lift Rh
7	532 19 64-92	Grip, Lever
10	532 19 63-14	Spring Torsion
87	532 19 42-09	Pin Cotter 7/16 Bow Tie Lock
88	532 19 53-04	Spring Lift Assist
89	819 19 19-12	Washer Clear Zinc
90	532 19 42-08	Pin Cotter 5/16 Bow Tie Lock
91	532 19 79-84	Link Lift Susp Mower Rear
92	532 19 51-74	Bracket Connect Link Lift
95	532 19 51-71	Bushing Alignment Link Lift
97	817 06 06-12	Screw 3/8-16 x .75 Smgml Tap/R.Z
98	532 19 52-64	Link Lift Susp. Front Mower
99	532 19 52-63	Bushing Spherical Susp Front
100	873 36 07-00	Nut Hex Jam ASF 7/16-20 unf

**NOTE:** All component dimensions given in U.S. inches  
1 inch = 25.4 mm



# TRACTOR - MODEL NO. 917.279260 (GTH2448T)

## HYDRO TRANSAXLE - - MODEL NUMBER 316-0610

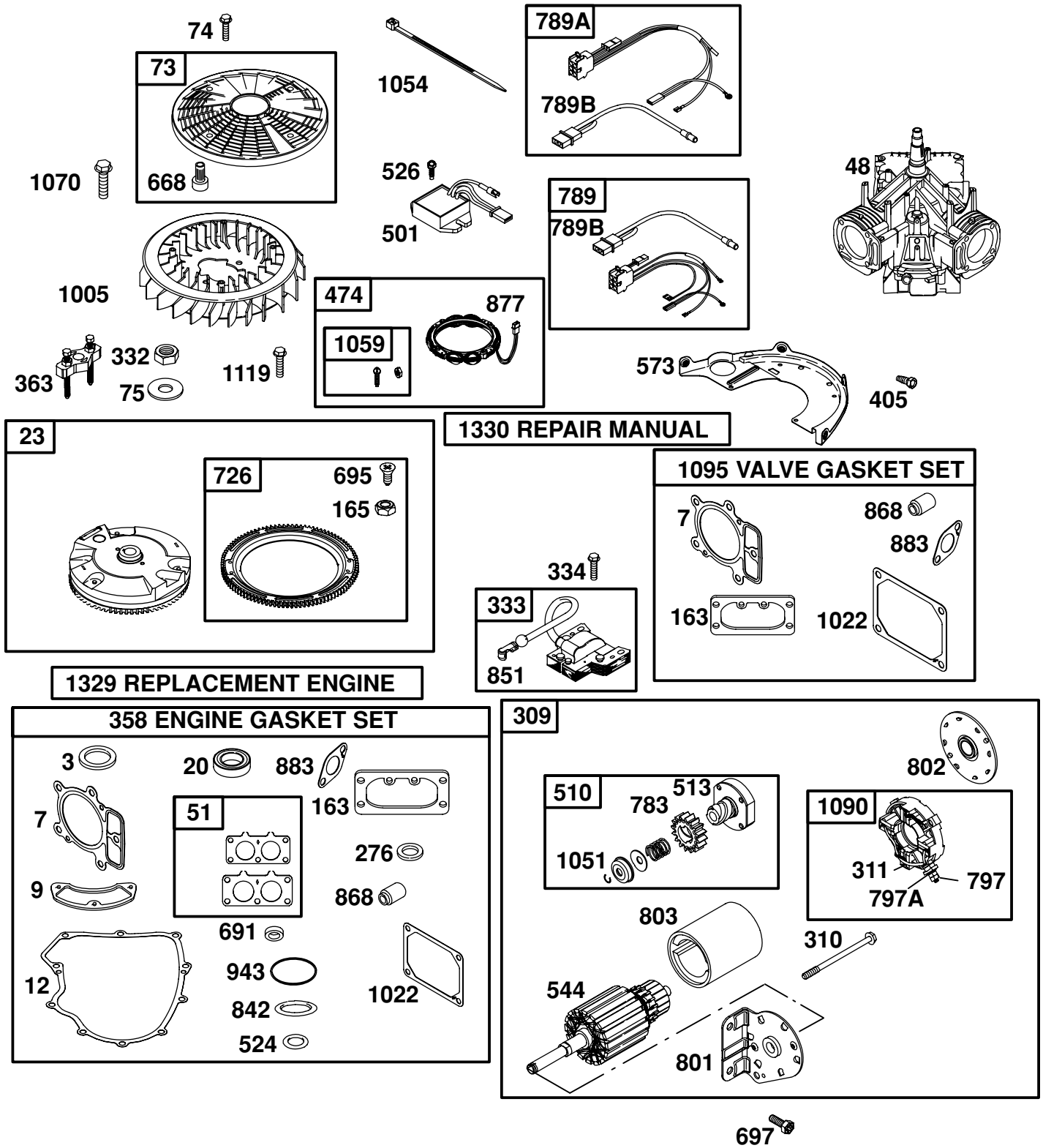
Key No.	Part No.	Description	Key No.	Part No.	Description
1	170351	Kit, Main Housing			
		Main Housing, Machined Bushing.865 X.985 X.790			
2	170352	Kit, Side Housing			
		Side Housing, Machined Bushing.865 X.985 X.790	64	142892	Bolt, Nylok
		Bushing.624 X.719 X.562	65	170411	Spacer, Brake Torsion Spring
3	170353	Kit, Center Section Center Section, Machined	66	401262	Spring, Brake Arm Bias
		Bushing.707 X.788 X.591	68	401263	Arm-brake, RH
4	170354	Swashplate, Trunnion Machined	69	170415	Nut, Castle 5/16-24
5	169898	Kit, Cylinder Block (1000) Block - Cylinder Piston	70	170416	Pin, Cotter 3/32x3/4
		Spring, Compression Washer Thrust	71	170417	Brake Spring
6	178322	Sealant Tube	72	170418	Washer (310-0750)
7	170356	Hexflange Screw 1/4-20 X 1.25	73	142884	Washer, Flat
8	170357	Stud, 5/16-24 Hex Double End	74	170419	Seal, Oil
9	170358	Shaft, Input	75	170420	Ass'y Check Plug
10	170359	Retaining Ring	76	170421	Bolt, Stud 5/16-24
11	170360	Spacer	77	170422	Puck, Friction
12	169870	Retaining Ring	78	142969	Spring
13	170361	Seal, Lip.67 X 1.58 X.276	79	142980	Spacer
14	173158	Bearing, Ball 6203 (BDR)	80	150778	Nut, Nylon Insert Hex Lock 5/16-24
16	170362	Hex Flange Head Screw 1/4-20 X 1.25	81	170423	Wedge, Friction
17	170363	Seal, Lip 18 X 32 X 7	82	170424	Clip, Washer
18	170364	Arm, Control	84	170425	Fitting, 5/16 X Sae 5/32 Tube
19	173159	Bearing, Thrust (10cc)	85	170426	Hose, Expansion Tank
23	404023	Shock Valve Assembly 270 Bar	87	401264	Cap, Barbed Vent
24	170366	Shaft Motor	88	178334	Bolt, Self Tapping (BDR)
27	404024	Gear, Pinion, 12T	90	170430	Puck, Inner Wedge
28	404025	Gear 1 OT / 49T	93	170431	Spring Clip, Housing
29	170369	Gear, 1 OT Jackshaft	107	170432	Deflector
30	406920	60T Bullgear	108	170433	Washer, Motor Shaft.71 ID X 1.150D X.03 Thick
31	170371	Sleeve Bearing .75 X 1.75 X.625	109	170434	Plug, Straight Thread 9/16-18
32	170389	Sleeve Bearing (Outboard) .75 X 1.575 X.625	111	170435	O-ring .7 X.301 ID
33	142991	Washer	113	170437	Bracket, Support Expansion Tank
34	170390	Lip Seal, Axle Shaft	119	191031	Kit, Fan - Washer - Nut
35	406921	Shaft, Axle (Keyed, R.h.)			Fan, 7 In
36	406922	Shaft, Axle (Keyed, L.h.)			Hex Lock Nut 1/2-20 (Nylon Insert)
37	406923	Gear, Steel Miter 12T (Splined)			Washer, Or Slotted, .53 X 1.63 X.06
38	406924	Gear, Steel Miter 12T	120	170440	Pulley
39	150809	Differential Shaft (310-0750)	123	401265	Belt Keeper
40	170393	Retaining Ring	124	404029	Center Section Filter Bypass Assembly
41	170394	Pin, Jackshaft			Center Section Base Filter W/ Poppet Shock Valve Assembly
42	170395	Magnet, Ring			270bar Check Plug Assembly, .027 Washer
43	170396	Spring, Bypass			Spring, Bypass
44	150797	Bolt 3/8-24 X 2-1/2			Actuator, Bypass Deflector Bottom, Filter
45	170397	Filter			Bushing, .707 X.788 X.591
46	170398	Base, Filter			Kit, Filter
47	170399	Actuator, Bypass	125	170445	Bottom, Filter Spring,
48	170400	Rod, Bypass Actuator			Bypass Actuator,
49	196599	Arm, Bypass			Bypass Deflector
50	170402	Retaining Ring.25 External			Base, Filter W/ Poppet
51	170403	Seal, Lip .741 X.25 X.25			Kit, Fan/pulley
52	170404	Washer, Flat 0.050" (210-1000)	126	170446	Hex Jam 1/20-20 (Nylon Inser)
53	170405	Retaining Ring			Washer, OD Slotted, .53 X 1.63 X.06 Fan, 7 In
54	170406	Bearing, Center Block			Pulley
55	142977	Spring, Helical Compression			Kit, Seal
56	142978	Washer, Block Thrust	127	170447	Lip Seal.67 X 1.58 X.276 Lip Seal 18 X 32 X 7
57	20w-50	Oil			Lip Seal .706 X 1.584 X.25 Lip Seal.741 X.250 X.250 TC
58	142929	Kit, Brake Yoke			Oil
59	170408	Rotor, Brake			Seal.625 X1.0x.25 O-ring.07 X .301 ID
60	142883	Brake Puck			Kit, Expansion Tank
61	142882	Brake Puck Plate	128	401266	Tank, Expansion Assembly Cap, Barbed Vent
62	170409	Pin, Brake Actuating			Bolt, Self Tapping 10-32 X 1/2 Bracket,
63	170410	Hfhcs 1/4-20 X 2 W/patch, Special Flange			Support Expansion Tank Hose,
			900	192587	Expansion Tank
					Transaxle

Note: All Component Dimensions Given In U.S. Inches 1 Inch = 25.4 mm

# REPAIR PARTS

TRACTOR - - MODEL NUMBER 917.279260

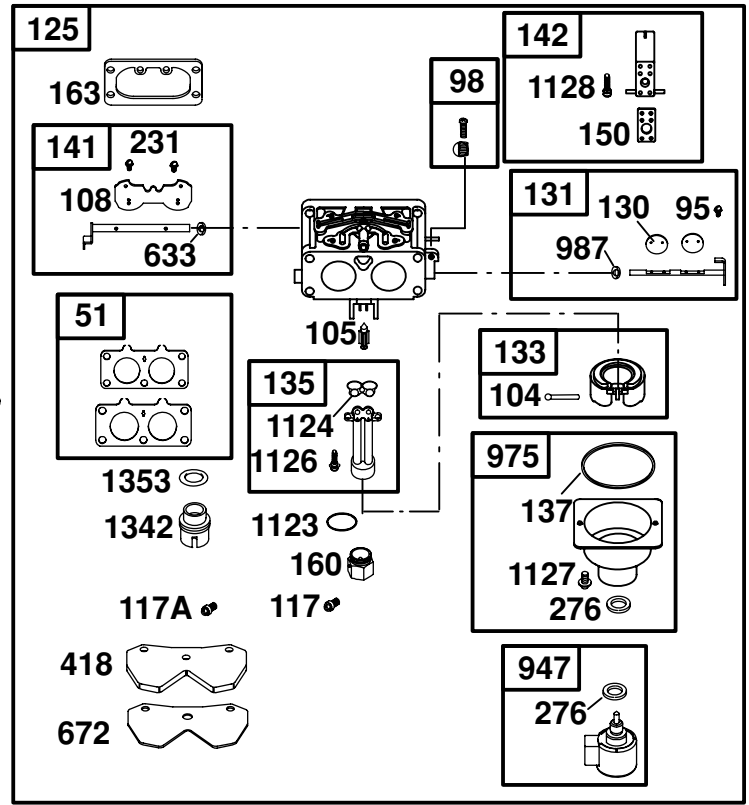
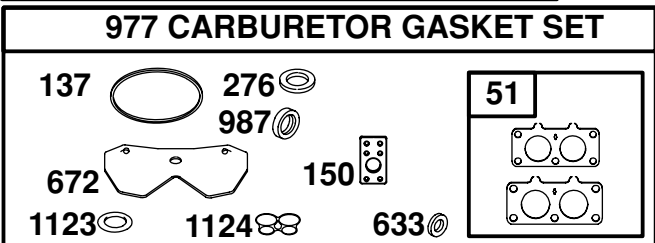
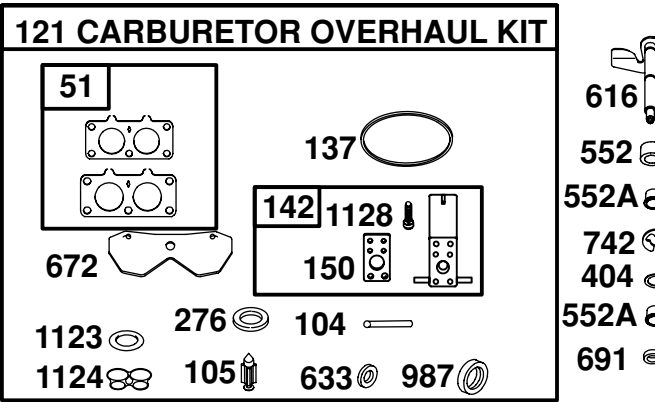
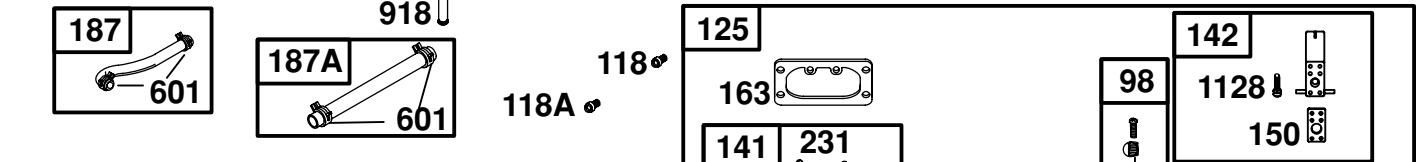
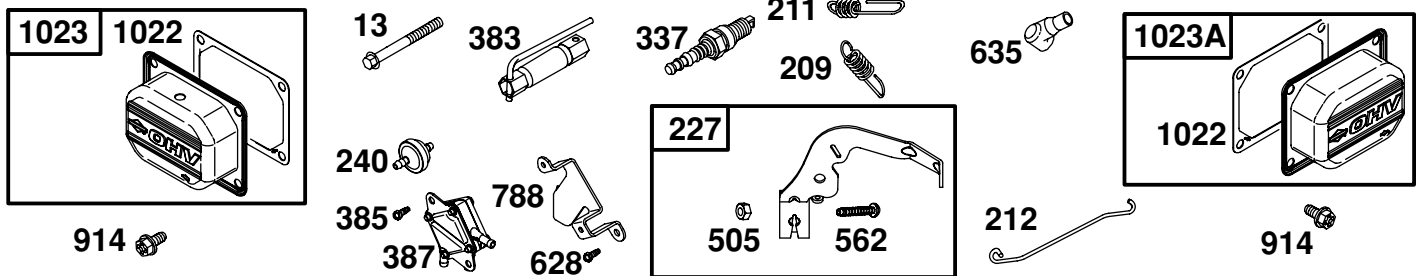
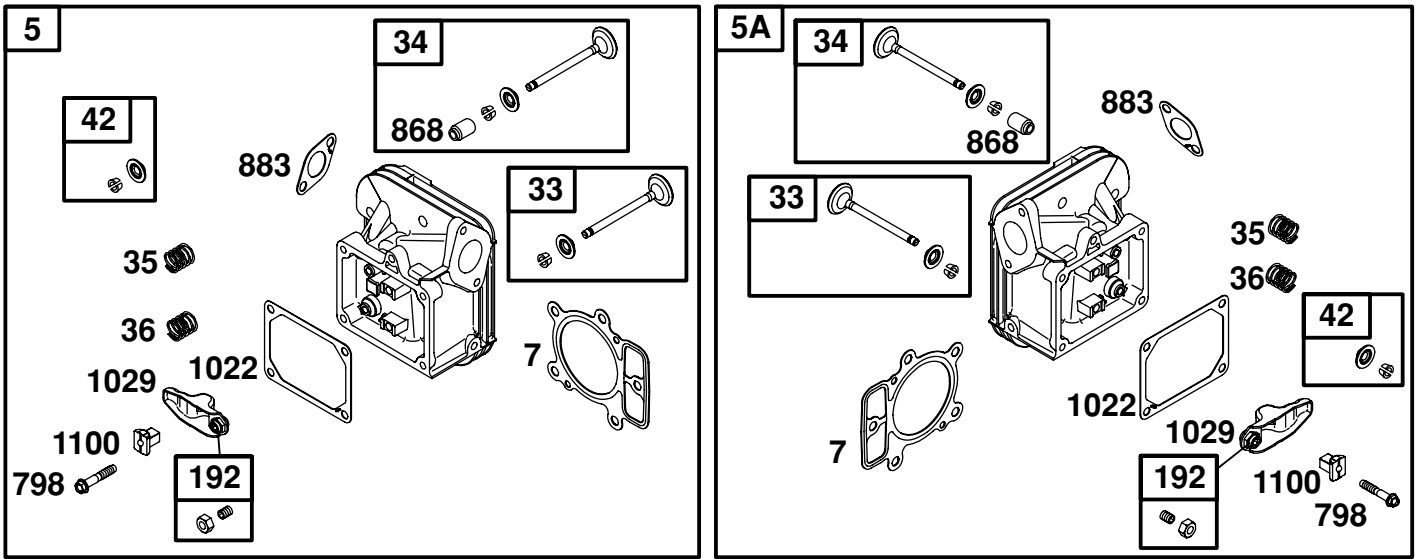
BRIGGS ENGINE - MODEL NUMBER 445677, TYPE NUMBER 0476-E1



# REPAIR PARTS

TRACTOR - - MODEL NUMBER 917.279260

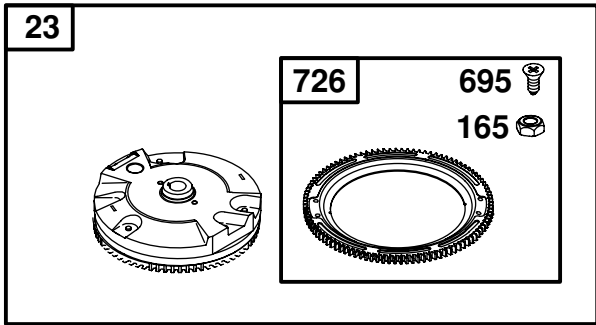
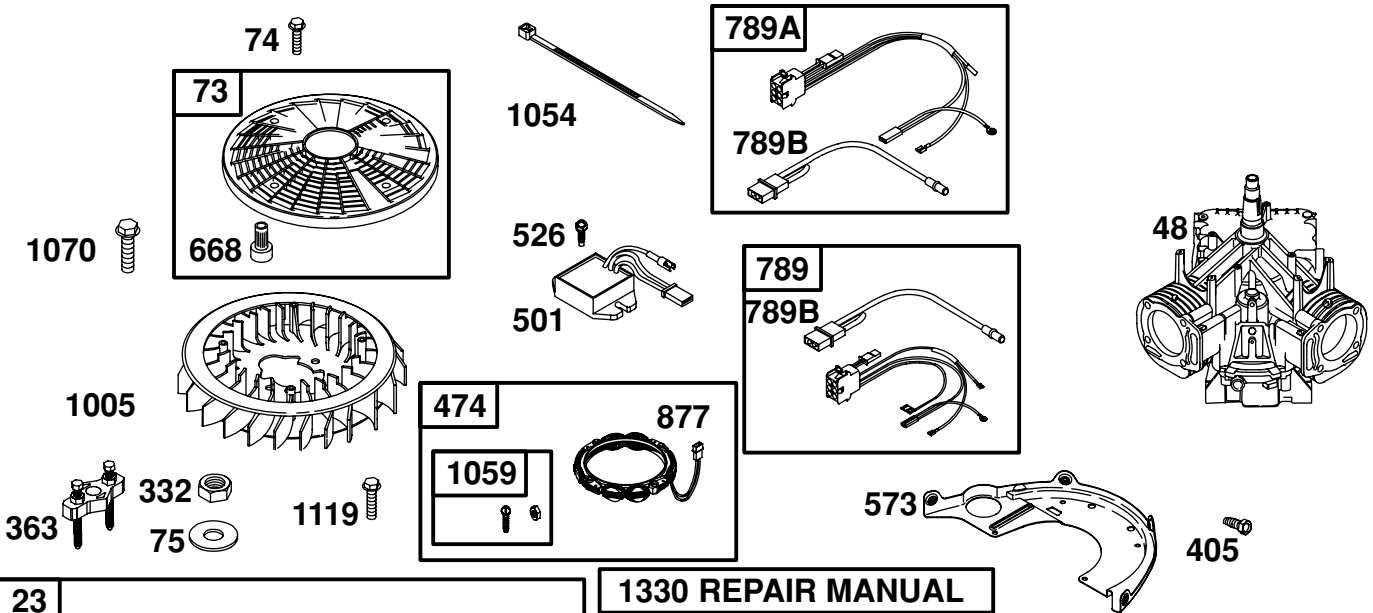
BRIGGS ENGINE - MODEL NUMBER 445677, TYPE NUMBER 0476-E1



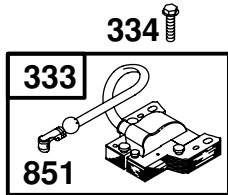
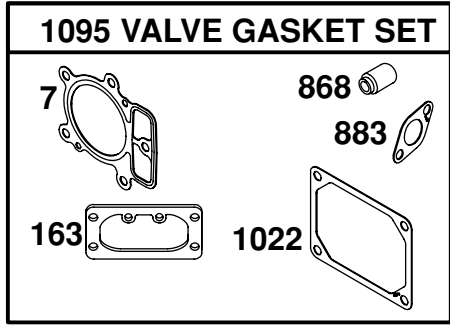
# REPAIR PARTS

TRACTOR - - MODEL NUMBER 917.279260

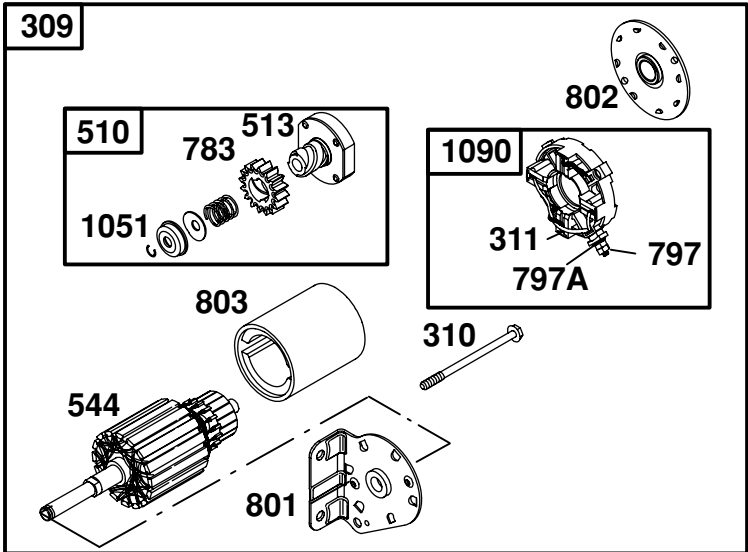
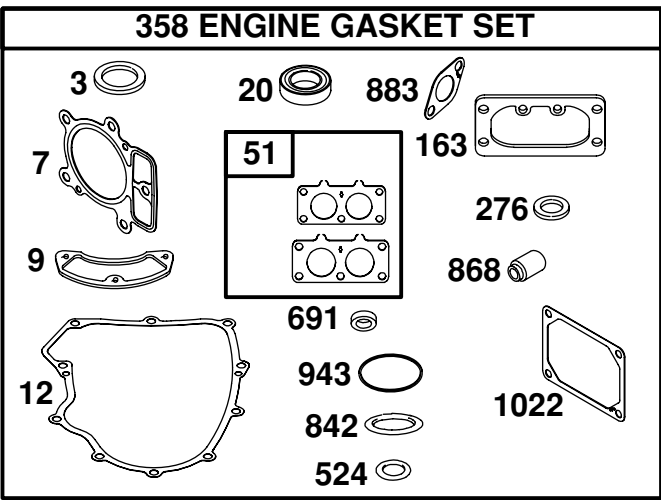
BRIGGS ENGINE - MODEL NUMBER 445677, TYPE NUMBER 0476-E1



1330 REPAIR MANUAL



1329 REPLACEMENT ENGINE



697

# REPAIR PARTS

## TRACTOR - - MODEL NUMBER 917.279260

### BRIGGS ENGINE - MODEL NUMBER 445677, TYPE NUMBER 0476-E1

KEY NO.	PART NO.	DESCRIPTION	KEY NO.	PART NO.	DESCRIPTION
1	699753	Cylinder Assembly	121	699734	Kit-Carburetor Overhaul
2	499585	Kit-Bushing/Seal (Magneto Side)	125	699709	Carburetor
3	391086s•	Seal-Oil (Magneto Side)	130	690993	Valve-Throttle
4	699747	Sump-Engine	131	499805	Kit-Throttle Shaft
5	693998	Head-Cylinder (Cylinder 1)	133	699724	Float-Carburetor
5A	693999	Head-Cylinder (Cylinder 2)	135	699729	Tube-Fuel Transfer
7	693997	•+ Gasket-Cylinder Head	137	690994	∅‡Gasket-Float Bowl
8	792185	Breather Assembly	141	699722	Kit-Choke Shaft
9	690937	• Gasket-Breather	142	699726	∅ Nozzle-Carburetor
10	691108	Screw (Breather Assembly)	146	690979	Key-Timing
11	690942	Tube-Breather	150	690995	∅‡Gasket-Nozzle
12	697227	• Gasket-Crankcase	160	699727	Retainer-Solenoid
13	791130	Screw (Cylinder Head)	163	691001	•+ Gasket-Air Cleaner
15	690946	Plug-Oil Drain	165	693148	Nut (Ring Gear)
15A	691680	Plug-Oil Drain	187	791766	Line-Fuel (Cut to Required Length)
16	790132	Crankshaft	187A	791744	Line-Fuel (Molded)
20	690947	• Seal-Oil (PTO Side)	188	691108	Screw (Control Bracket)
22	694966	Screw (Crankcase Cover)	192	690083	Adjuster-Rocker Arm
23	691053	Flywheel	209	697674	Spring-Governor
24	222698s	Key-Flywheel	211	691019	Spring-Governed Idle
25	792117	Piston Assembly (Standard)	212	695238	Link-Governor
		792144 Piston Assembly (.020" Oversize)	213	691021	Bracket-Choke Control
26	792026	Ring Set (Standard)	216	691022	Link-Choke
		792073 Ring Set (.020" Oversize)	219	698231	Gear-Governor
27	690975	Lock-Piston Pin	220	690412	Washer (Governor Gear)
28	690229	Pin-Piston (Standard)	222	698761	Bracket-Control
29	699699	Rod-Connecting (Standard)	227	792492	Lever-Governor Control
32	690976	Screw (Connecting Rod)	231	690718	Screw (Choke Valve)
33	499596	Valve-Exhaust	240	691035	Filter-Fuel
34	697464	Valve-Intake	250	690957	Retainer-Breather
35	694865	Spring-Valve (Intake)	252	690956	Collector-Oil
36	694865	Spring-Valve (Exhaust)	265	691024	Clamp-Casing
42	499586	Keeper-Valve	267	695134	Screw (Casing Clamp)
45	690977	Tappet-Valve	276	690997	•∅‡Washer-Sealing
46	790562	Camshaft	287	691108	Screw (Dipstick/Tube Assembly)
48	698173	Short Block	304	790688	Housing-Blower
50	695241	Manifold-Intake	305	691005	Screw (Blower Housing)
51	791677	•∅‡ Gasket-Intake	305A	790690	Screw (Blower Housing)
53	690951	Stud (Carburetor)	309	691262	Motor-Starter
54	695239	Screw (Intake Manifold)	310	691263	Screw (Starter Motor)
54A	699816	Screw (Intake Manifold)	311	497608	Brush Set
73	494439	Screen-Rotating	332	691059	Nut (Flywheel)
74	698425	Screw (Rotating Screen)	333	691060	Armature-Magneto
75	691056	Washer (Flywheel)	334	691061	Screw (Magneto Armature)
89	690283	Plug-Oil	337	691043	Plug-Spark
95	690718	Screw (Throttle Valve)	358	694012	Gasket Set-Engine
98	699721	Kit-Idle Speed	363	691062	Puller-Flywheel
104	694918	∅ Pin-Float Hinge	383	690966	Wrench-Spark Plug
105	698537	∅ Valve-Float Needle			
108	699723	Valve-Choke			
117	699732	Jet-Main (Standard)(Left)			
117A	699733	Jet-Main (Standard)(Right)			
118	790890	Jet-Main (High Altitude)(Left)			
118A	699458	Jet-Main (High Altitude)(Right)			

• Included in Engine Gasket Set, Key. No. 358  
∅ Included in Carburetor Overhaul Kit, Key. No. 121  
‡ Included in Carburetor Gasket Set, Key. No. 977  
+ Included in Valve Gasket Set, Key. No. 1095

NOTE: All component dimensions given in U.S. inches 1 inch = 25.4 mm

# REPAIR PARTS

## TRACTOR - - MODEL NUMBER 917.279260

### BRIGGS ENGINE - MODEL NUMBER 445677, TYPE NUMBER 0476-E1

KEY NO.	PART NO.	DESCRIPTION	KEY NO.	PART NO.	DESCRIPTION
385	690960	Screw (Fuel Pump)	865A	691014	Cover-Air Guide (Cylinder 2)
387	808656	Pump-Fuel	865B	691015	Cover-Air Guide
404	690442	Washer (Governor Crank)	868	690968	•+ Seal-Valve
405	697820	Screw (Back Plate)	877	399916	Wire/Connector-Alternator
418	690999	Plate-Carburetor	883	690970	•+ Gasket-Exhaust
431	790816	Elbow-Intake	914	691127	Screw (Rocker Arm Cover)
445	499486s	Filter-Air Cleaner Cartridge	918	694000	Hose-Vacuum
447	691003	Screw (Air Guide Cover)	929	695239	Screw (Choke Control Bracket)
447A	691108	Screw (Air Guide Cover)	929A	691003	Screw (Choke Control Bracket)
467	691008	Knob-Air Cleaner	943	690589	• Seal-O Ring (Oil Pump Cover)
467A	790697	Knob-Air Cleaner	947	699728	Solenoid-Fuel
474	696458	Alternator	965	499613	Cover-Oil Pump
501	691185	Regulator	967	273638s	Filter-Pre Cleaner
505	691029	Nut (Governor Control Lever)	968	790689	Cover-Air Cleaner
510	497606	Drive-Starter	975	499810	Bowl-Float
513	692024	Clutch-Drive	977	699735	Gasket Set-Carburetor
523	691036	Dipstick	987	691000	Ø‡ Seal-Throttle Shaft
524	691032	• Seal-O Ring (Dipstick Tube)	1005	790698	Fan-Flywheel
525	691037	Tube-Dipstick	1013	690954	Nipple-Oil Filter
526	691108	Screw (Regulator)	1017	690770	Screen-Oil Pump
544	-- -- --	Armature-Starter (Serviced by 691262 Starter Motor Only)	1022	690971	•+ Gasket-Rocker Cover
552	690552	Bushing-Governor Crank	1023	499599	Cover-Rocker Arm (Cylinder 1)
552A	690553	Bushing-Governor Crank	1023A	499600	Cover-Rocker Arm (Cylinder 2)
562	690311	Bolt (Governor Control Lever)	1024	499054	Pump-Oil
573	790444	Plate-Back	1026	690981	Rod-Push (Steel)
601	691038	Clamp-Hose	1026A	690982	Rod-Push (Aluminum)
615	698290	Retainer-Governor Shaft	1027	492932s	Filter-Oil
616	691045	Crank-Governor	1029	690972	Arm-Rocker
617	697891	Seal-O Ring (Intake Manifold)	1035	691042	Shaft-Pump
628	691108	Screw (Fuel Pump Bracket)	1036	792019	Label-Emissions
633	690998	Ø‡ Seal-Choke/Throttle Shaft	1051	691265	Ring-Retaining
635	66538s	Boot-Spark Plug	1054	280275	Cable-Tie
654	690958	Nut (Carburetor)	1058	275475	Owner's Manual
668	691215	Spacer	1059	698516	Kit-Screw/Washer
672	690234	Ø‡ Gasket-Carburetor Plate	1070	690372	Screw (Flywheel Fan)
691	790574	• Seal-Governor Shaft	1090	691293	Retainer-Brush
695	693149	Screw (Ring Gear)	1095	694013	Set-Valve Gasket
697	690372	Screw (Drive Cap)	1100	791959	Pivot-Rocker Arm
703	691010	Clip	1119	691183	Screw (Alternator)
718	690959	Pin-Locating	1123	699725	Ø‡ Seal-O Ring (Solenoid Retainer)
726	499612	Gear-Ring	1124	690988	Ø‡ Seal-O Ring (Fuel Transfer Tube)
741	690980	Gear-Timing	1126	690991	Screw (Fuel Transfer Tube)
742	690328	Retainer-E Ring	1127	690992	Screw (Float Bowl)
750	696999	Screw (Oil Pump Cover)	1128	690990	Ø Screw (Carburetor Nozzle)
783	693058	Gear-Pinion	1329	446777-0026	Replacement Engine (If original engine is equippe with a six pin wiring harness transfer to the replacement engine. Transfer oil sensor to the replacement engine).
788	691039	Bracket-Fuel Pump			Repair Manual
789	698330	Harness-Wiring	1330	273521	Extension-Fuel Transfer Tube
789A	696576	Harness-Wiring	1342	699731	Seal-O Ring (Fuel Transfer Tube Extension)
789B	790544	Harness-Wiring	1353	699725	
797	691029	Nut (Brush Retainer)			
797A	693167	Nut (Brush Retainer)			
798	697890	Screw (Rocker Arm)			
801	691283	Cap-Drive			
802	691286	Cap-End			
803	-- -- --	Housing-Starter (Serviced by 691262 Starter Motor Only)	•		Included in Engine Gasket Set, Key. No. 358
842	691031	• Seal-O Ring (Dipstick)	Ø		Included in Carburetor Overhaul Kit, Key. No. 121
847	499602	Assembly-Dipstick/Tube	‡		Included in Carburetor Gasket Set, Key. No. 977
851	493880s	Terminal-Spark Plug	+		Included in Valve Gasket Set, Key. No. 1095
865	691012	Cover-Air Guide (Cylinder 1)			

**48** NOTE: All component dimensions given in U.S. inches  
1 inch = 25.4 mm