

## Collection System

**Operators Manual**  
**Parts Manual**

**Model: 113706**

Please read these instructions carefully and make sure you understand them before using the machine.

MANUAL NO. 539 113763 REV 01 (09/18/06)



# INDEX

---

## Operators Guide

Features and Controls .....	4
General Information .....	5
Safety Rules .....	5
Assembly Instructions .....	7
iZ Models with Vertical Muffler .....	7
Front Weights iZ Models .....	8
Front Weights LZ Models .....	9
Collection System .....	10
Handle Assembly .....	12
Hopper Door Adjustment .....	13
Blower/Drive Kit .....	14

<b>Operating the Collection System .....</b>	<b>17</b>
--	-----------

## Maintenance and Service Instructions

Transport .....	18
Cleaning and Washing .....	18
Storage .....	18
Preventative Maintenance Schedule .....	18
Caring for Hoses .....	19
Cleaning Poly Mesh .....	19
Troubleshooting Guide .....	20

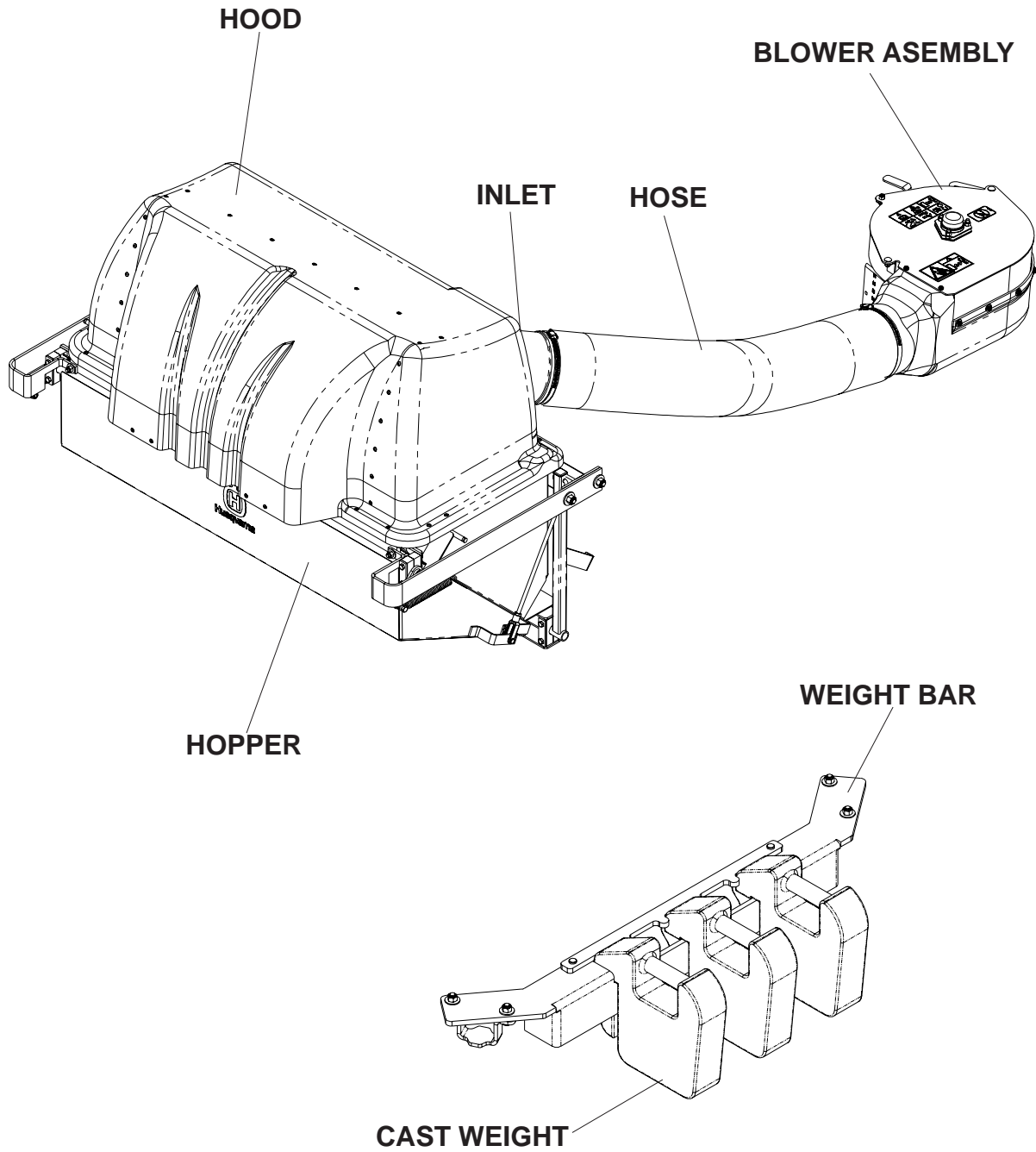
## Replacement Parts

Hopper Assembly .....	22
Hood Assembly .....	24
Blower Assembly .....	26
Drive Kit iZ Models with 48", 52" & 61" Decks .....	28
Drive Kit LZ Models with 52" & 61" Decks .....	30
Hardware Kit .....	32

**WARNING: Engine exhaust, some of its constituents, and certain vehicle components contain or emit chemicals known to the State of California to cause cancer and birth defects or other reproductive harm.**

# FEATURES & CONTROLS

---



**NOTE:** Your Front Weight Bar may look different from those shown in this diagram.

# SAFETY RULES

---

## General Information

This manual will assist you in the safe operation and proper maintenance of your Husqvarna equipment. Read it thoroughly before attempting to operate the machine. Call your dealer or Husqvarna if additional information is required.

The following safety symbols are used throughout the manual to alert you to information about unsafe actions or situations:



**DANGER** indicates immediate hazards that may result in severe injury or death.



**WARNING** indicates unsafe actions or situations that may cause severe injury, death, and/or major equipment or property damage.



**CAUTION** indicates unsafe actions or situations that may cause injury and/or minor equipment or property damage.

This equipment should not be modified without the manufacturer's prior written authorization. Doing so may not only affect the equipments' performance and durability, but also create safety hazards for the operator and the surroundings. Warranty will be void if changes are made to the equipment without the manufacturer's prior written authorization.

## Safety Procedures

### 1 - Training:

- Read the Operator's manual. If the operator(s) or mechanic(s) can not read English it is the owner's responsibility to explain this material to them.
- Become familiar with the safe operation of the equipment, operator's controls, and safety signs.
- All operators and mechanics should be trained. The owner is responsible for training the users.
- Never let children or untrained people operate or service the equipment. Local regulations may restrict the age of the operator.
- The owner/user can prevent and is responsible for accidents or injuries occurring to themselves, other people, and/or property.

### 2 - Preparation:

- Wear appropriate clothing including hard hat, safety glasses and ear protection. Long hair, loose clothing or jewelry may get tangled in moving parts.
- Inspect the area where the equipment is to be used and remove all objects such as rocks, toys and wire which can be thrown by the machine.
- Use extra care when handling gasoline and other fuels. They are flammable and vapors are explosive. Use only an approved container. Never remove gas cap or add fuel with engine running. Allow engine to cool before refueling. Do not smoke while fueling or operating equipment. Never refuel or drain the machine indoors.
- Check that operator's controls, safety switches, hoses, and shields are securely attached and functioning properly. Do not operate unless they are functioning properly.

# SAFETY RULES

---

## 3 - Operation

- Never run an engine in an enclosed area.
- Only operate in good light, keeping away from holes and hidden hazards.
- Slow down and use extra care on hillsides. Make turns gradually and at slow speed. Do not operate across the sides of slopes. Operate up and down slopes only. Do not operate on steep slopes.
- Turf conditions can affect the machine's stability. Do not operate on wet grass where traction may be reduced.
- Do not change the engine governor setting or overspeed the engine.
- Stop equipment and inspect vacuum impeller and hoses after striking objects or if an abnormal vibration occurs. Make necessary repairs before resuming operations.
- Look behind and down before backing up to ensure a clear path.
- Slow down and use caution when making turns and crossing roads and sidewalks. Stop vacuum and mower blades if not mowing.
- Do not operate machine under the influence of alcohol or drugs.

- Use care when loading or unloading the machine into a trailer or truck.
- Use care when approaching blind corners, shrubs, trees, or other objects that may obscure vision.

## 4 - Maintenance and Storage:

- Stop engine and disconnect spark plug wire. Wait for all movement to stop before adjusting, cleaning, or repairing.
- Clean grass and debris from muffler and engine to help prevent fires. Clean up oil or fuel spillage.
- Let engine cool before storing and do not store near sparks or open flame.
- Shut off fuel while storing. Do not store fuel near flames or drain indoors.
- Never allow untrained personnel to service machine.
- Keep hands and feet away from moving parts. If possible, do not make adjustments with the engine running.
- Keep all parts in good working condition and all hardware tightened. Replace all worn or damaged decals.

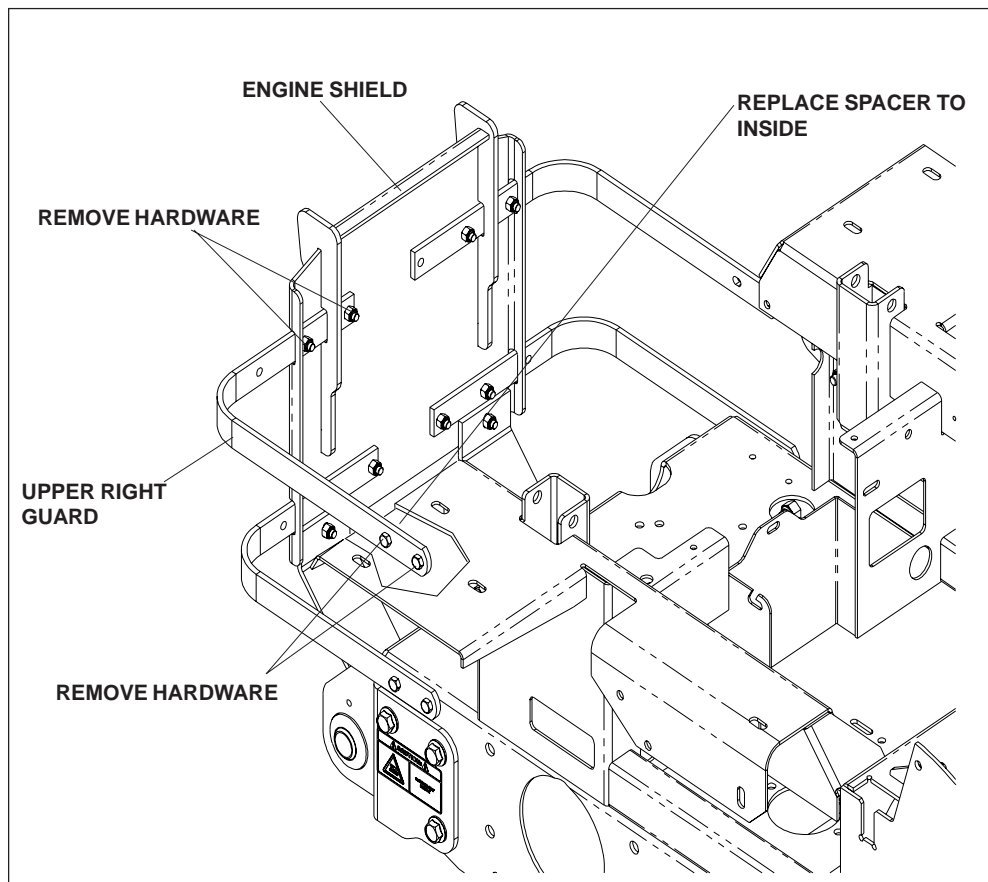
# ASSEMBLY

## Assembly Instructions

### For iZ Models with a Kawasaki engine and vertical muffler only.

You must obtain a muffler kit Part No. 539 113780, from your dealer prior to installing the collection system.

1. Remove old muffler from unit. Clean engine exhaust flange of any residual gasket material.
2. Remove hardware on upper right guard on the engine shield and retain.
3. Remove hardware from the upper right guard on the unit and retain.
4. Install new muffler with new gaskets provided.
5. Slide right guard to second set of holes attach with original hardware.
6. Reattach the right guard to the unit. Place the spacers on the inside of the frame, secure with original hardware. See illustration.



# ASSEMBLY

## Assembly Instructions

### Front Weight Bar For iZ Models

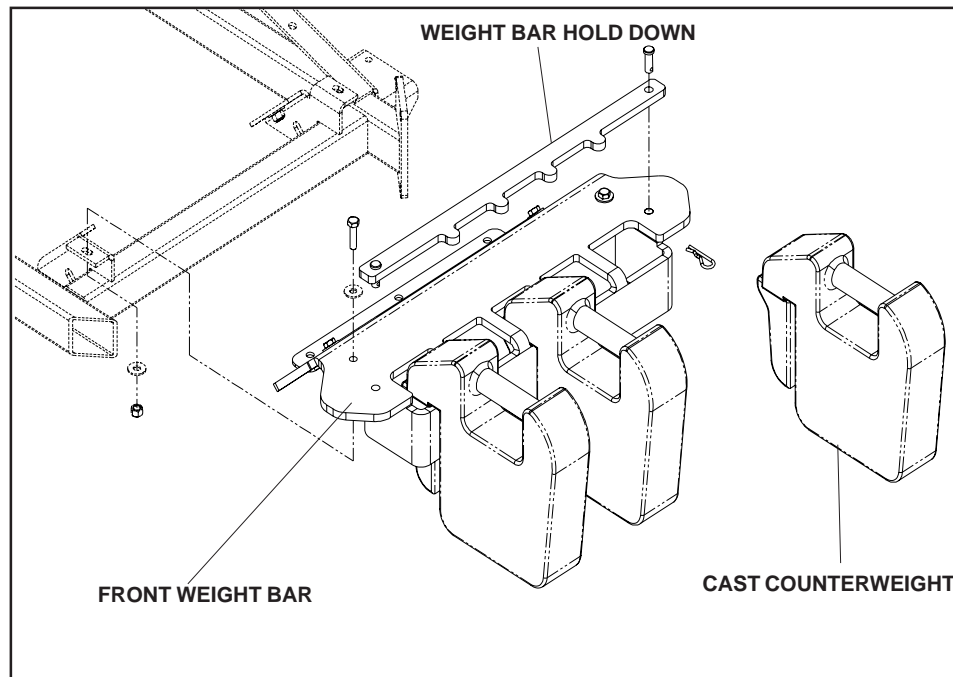
#### Tools Required:

Ratchet with 5/16" Socket

5/16" Wrench

#### Mounting Instructions

- Remove mower foot plate and floor pan.
- Align weight bar to the front of the frame. See diagram.
- Secure weight bar to mower frame with four 5/16-18 x 1 1/4" hex bolts from kit, reuse the four 5-16" washers and four 5/16" nyloc nuts that were removed from the foot plate.
- Place all front weights on front weight bar.
- Place holddown bar over front weights and secure to front weight bar using two 3/8" x 1" clevis pins and two hair pins.
- Reinstall floor pan.







# ASSEMBLY

## Assembly Instructions

### Collection System

Tools Required:

Ratchet	(2) 3/4" Wrench
Torque Wrench	3/4" Socket
1/2" Wrench	Flat Screw Driver
1/2" Socket	5/32" Allen Wrench
9/16" Wrench	Hacksaw
9/16" Socket	11/32" Drill Bit
5/8" Socket	Drill

1. Open the mounting kit box and remove all of the components.
2. Place the support bracket on the frame and secure with (2) 990563, 3/8 x 1 bolts and (2) 976979, 3/8 nyloc nuts. Figure 1.
3. Place the hitch brackets on the frame and secure with (3) 990622, 1/2 x 1 1/4 bolts and (3) 101331, 1/2 nyloc nuts. Figure 1.

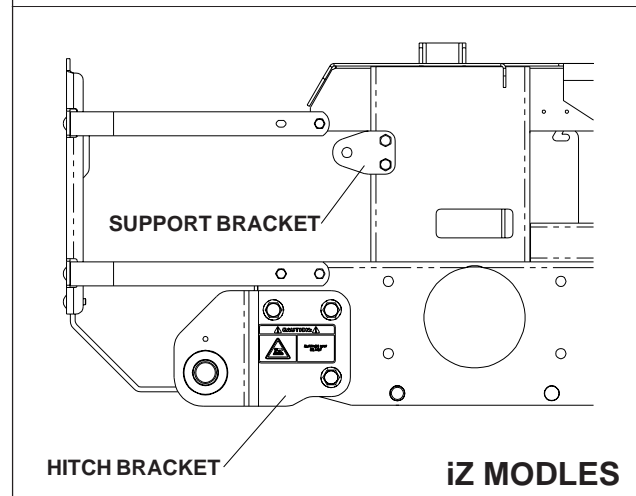
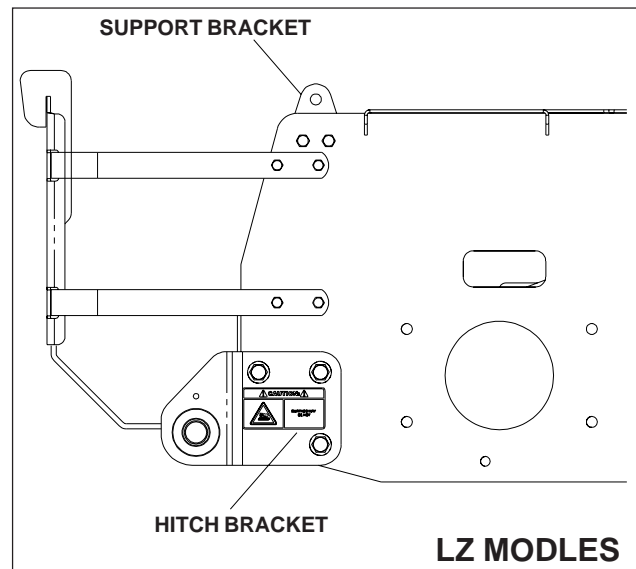


FIGURE 1

4. Place the hitch assembly on the ground behind the mower. Place the (2) hitch pins thru the hitch and the hitch brackets. Secure the hitch pins with the (2) hairpins that are secured with the (2) lanyards. Figure 2.

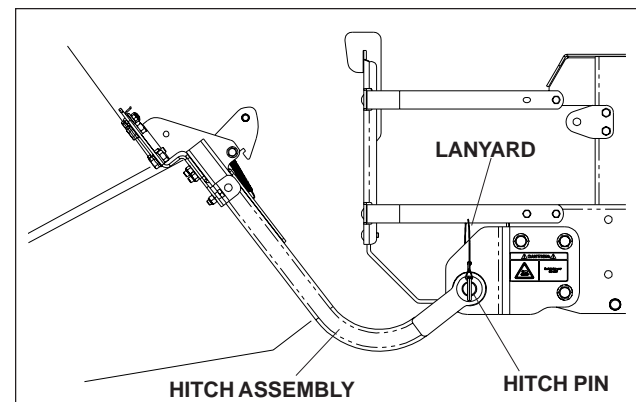
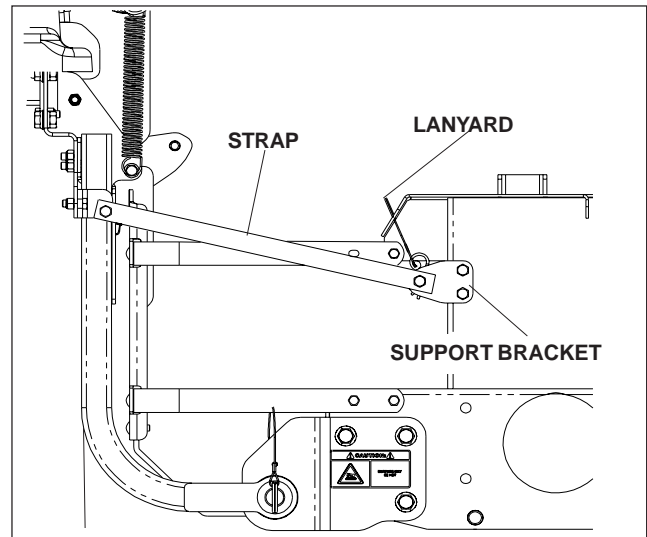


FIGURE 2

# ASSEMBLY

5. Install the two (2) straps with 1/2" bolts and nuts on the hopper and install the two (2) support brackets on the frame.



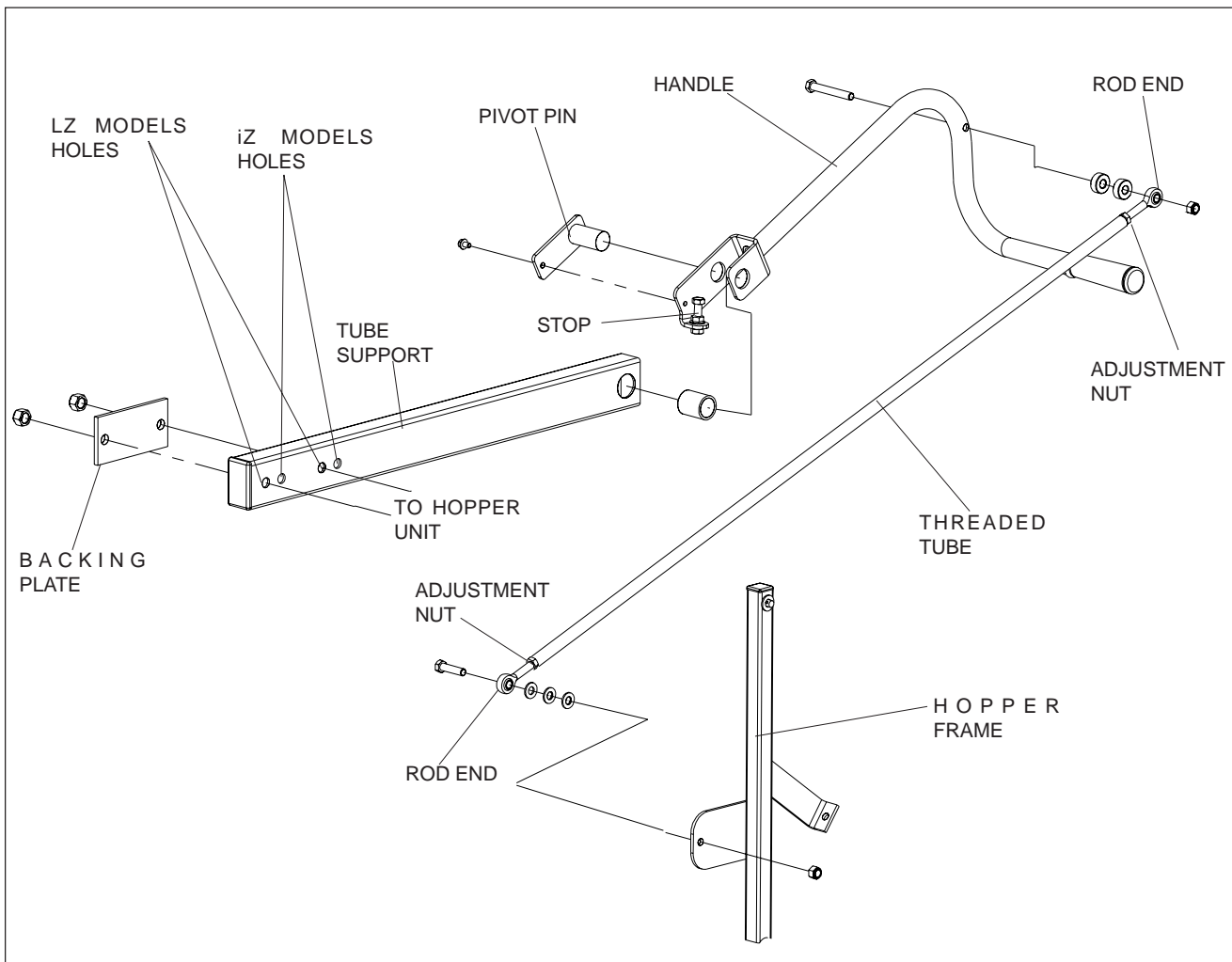
**FIGURE 3**

6. Attach hose support rod to the right side of the unit to keep the right rear tire from rubbing the hose.

# ASSEMBLY

## HANDLE ASSEMBLY

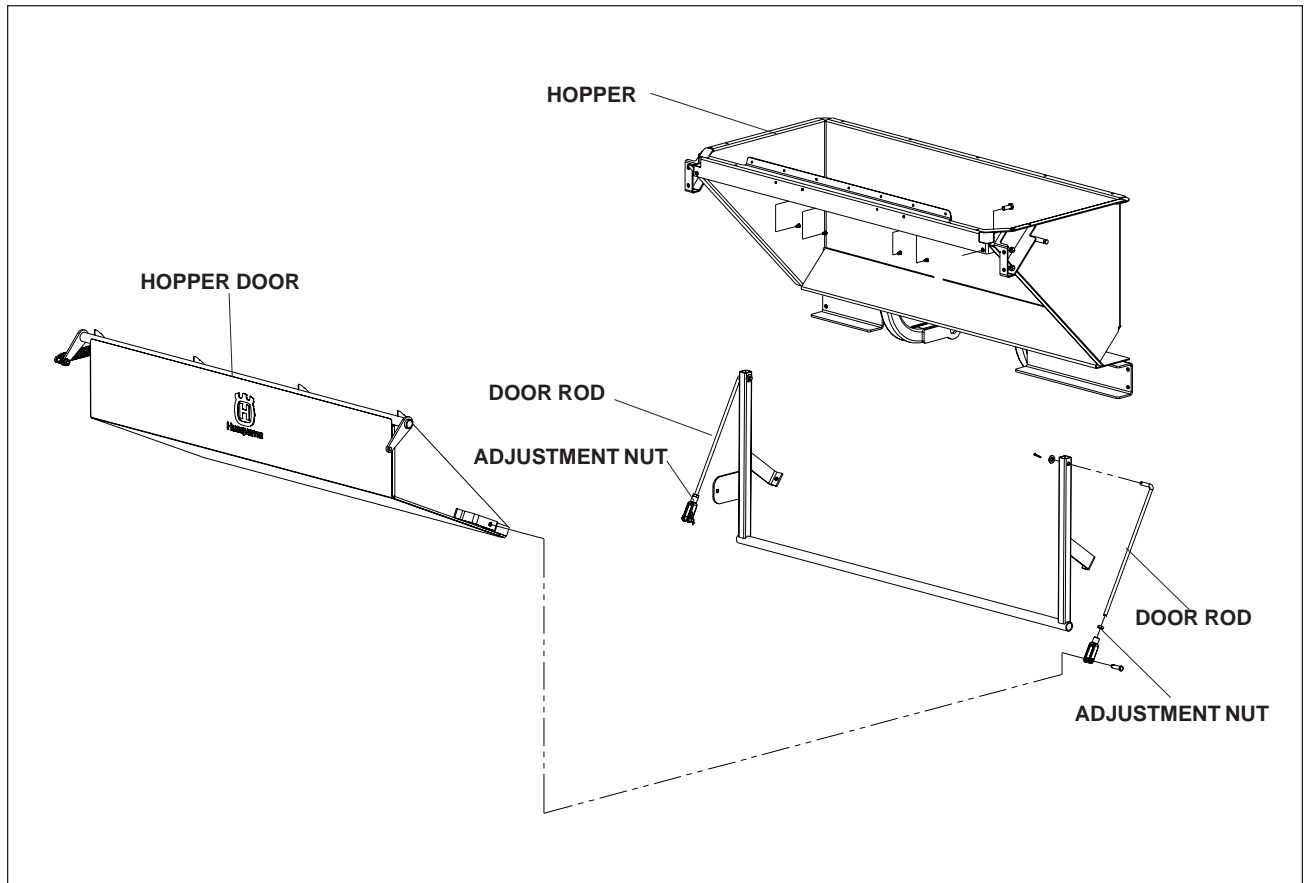
1. Attach the backing plate and tube support to the hopper. iZ Models will use the front hole and the LZ Models will use the back hole. See illustration.
2. Connect the handle to the tube support using the pivot pin.
3. Attach the threaded rod to the hopper and handle. When connected adjust the threaded tube using the adjusting nuts at both ends. The adjustment will be complete when the handle is pulled forward and the hopper door is fully closed.
4. Adjust handle stop so it does not go over center.



# ASSEMBLY

## HOPPER DOOR ADJUSTMENT

Adjust door rods on both sides with adjusting nut so door closes evenly. See illustration.



# ASSEMBLY

## Blower/Drive Kit

1. Open the drive kit box and remove all of the components.
2. Place the deck in the lowest cutting height.
3. Remove the right side belt shield from the deck.
4. Remove the deck belt from the right side pulley.
5. Remove the deck pulley.

**Note:** When the deck pulley is removed, the spindle can fall out of the cutter housing assembly. Be sure to secure the bottom of the spindle so that this does not happen.

6. Place the double pulley on the cutter housing assembly.
7. Place the heavy washer, and 7/16 lock washer on the 108951, 7/16 x 2 1/2 bolt and install in the spindle. Torque to 45 ft/lbs.
8. Place the blower assembly on it's top.
9. Using the 5/32" allen wrench, remove the 111229, 1/4 x 5/8 screw on the pulley shield. Figure 1.
10. Loosen the nut on the belt guide, and install the belt on the pulley. Figure 2.
11. Place the belt guide approximately 1/8" away from the pulley and re-tighten the nut. Figure 1.

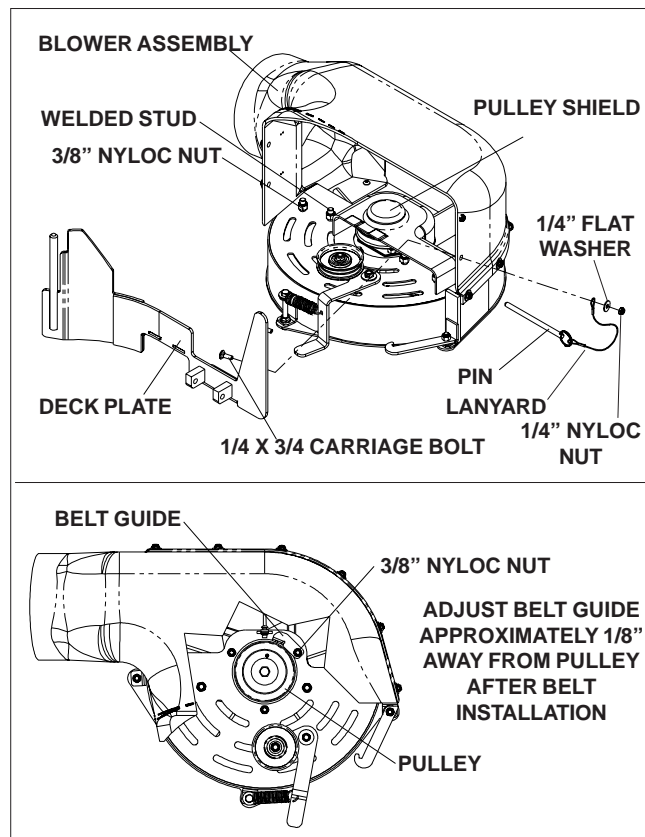


FIGURE 1

# ASSEMBLY

12. Re-install the pulley shield.
13. Cut the blower housing along the dashed line to fit the 52" and 61" decks. Drill the two small holes indicated with the 11/32" drill bit. The blower housing will fit 42" and 48" units with no modifications. Figure 2.
14. Remove the (4) 1/4 x 3/4 carriage bolts from the deck plate, and the (4) 3/8" nyloc nuts from the inside of the blower housing. Figure 1.
15. Place the deck plate on the welded studs in the blower housing. Install and tighten the (4) 3/8" nyloc nuts that were just removed. Figure 1.
16. Install the (4) 990074, 1/4 x 3/4 carriage bolts thru the square holes in the deck plate from the inside out.
17. Place the (4) 990598, 1/4 flat washers and (4) 108120, 1/4" nyloc nuts on the carriage bolts. The lanyard must be placed on the top front carriage bolt between the flat washer and the blower housing. Tighten the nuts. Figure 1.

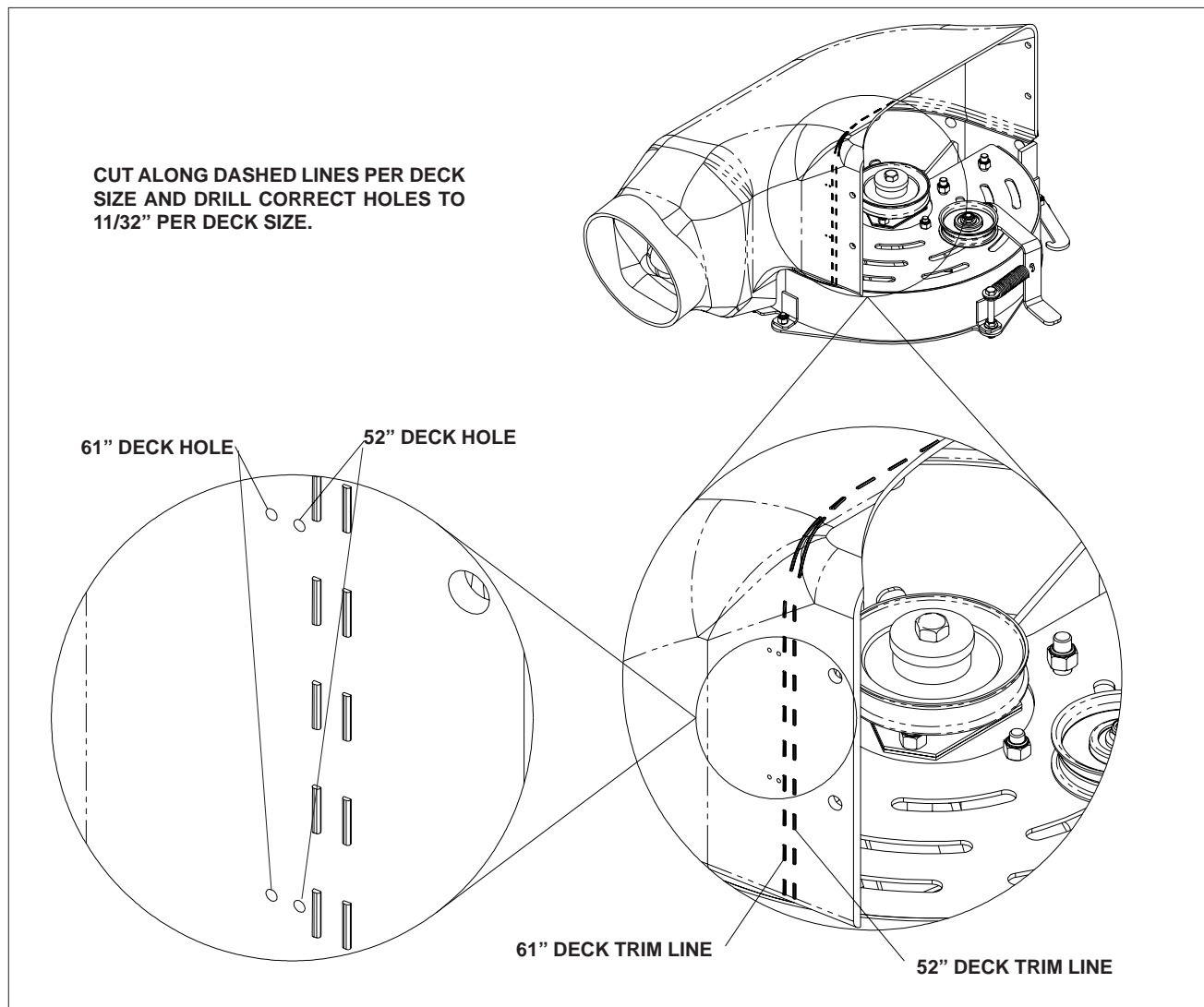
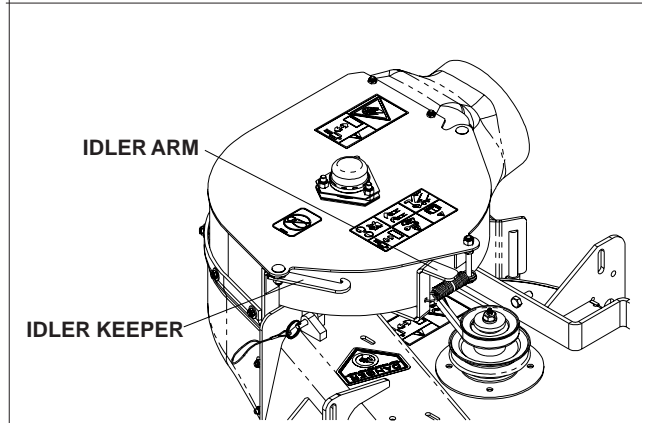
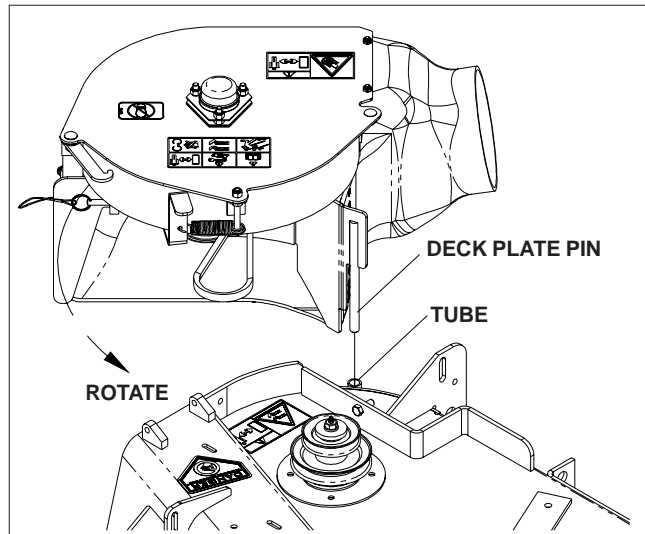


FIGURE 2

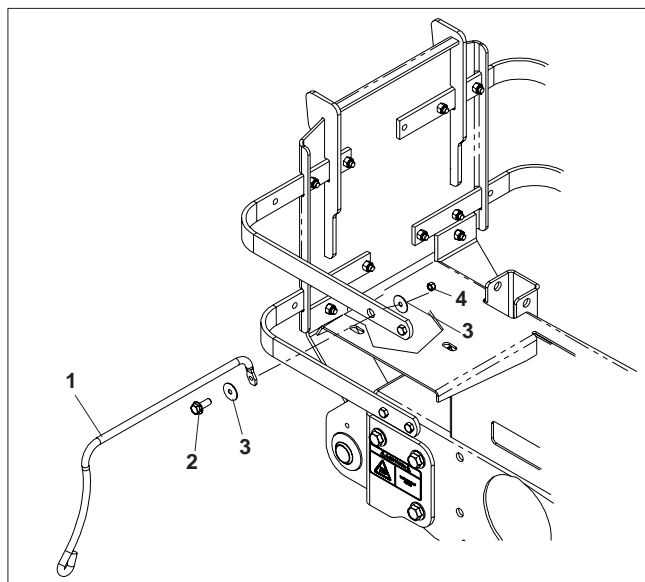
# ASSEMBLY

18. Remove the discharge chute from the deck.
19. Place the deck plate pin in the tube on the back edge of the deck. Rotate the blower around and into place. Figure 3.
20. Install the pin thru the tabs on both the deck and the blower. Figure 3.
21. Latch the idler arm in the idler keeper. Figure 3.
22. Install the belt on the deck pulley and release the idler arm from the keeper.
23. Install the new belt shield.



**FIGURE 3**

24. Remove and discard one bolt from the engine guard. Attach the hose support with hardware provided in the kit. See Figure 4.
24. Place the hose on the blower housing and secure with the over center hose clamp.
25. For the best performance, the hose from the blower to the hopper should be as straight as possible. You may have to cut the hose to obtain the correct length.



**FIGURE 4**

1. Hose support
2. Bolt, 5/16-18 x 1 1/4
3. Flat washers
4. Nut

## IMPORTANT INFORMATION

**Make sure the cutting deck is at the lowest cutting position when establishing the correct length of the hose.**



# OPERATION

---

## Operating the Collection System

1. **NEVER USE THE COLLECTION SYSTEM WITHOUT THE BLOWER ASSEMBLY AND HOSES SECURELY ATTACHED.**
2. Make sure hoses are connected at both ends. Inspect hoses prior to each use.
3. Do not use the unit on slopes greater than 10 degrees.
4. The mower must be running in order to vacuum debris through the mower deck.
5. In heavy grass it may be necessary to mow and collect at a slower ground speed.
6. Never attempt to unclog the collection system until the mower's engine has been shut off and all moving parts have come to a complete stop.
7. Do not stand behind the vent at the rear of the collection system due to the potential for small pieces of blowing debris to escape through the vent.
8. Wear eye and ear protection.

# SERVICE AND MAINTENANCE

---

## Transport



### WARNING

The collection system hopper must be completely empty while driving forward onto a trailer. If the mower must be loaded onto a trailer while there is still debris in the container, the mower must be backed up onto the trailer to avoid tipping.

For best results, clean polymesh inside hood regularly. Instructions for doing this can be found in the Service section of this manual

## Cleaning and Washing

Regular cleaning, washing, and lubricating will prolong the service of the machine.

**NOTE:** Use care with power washers to avoid damage to decals. Limit direct spray on these items.

**DO NOT EXCEED 1000 PSI WATER PRESSURE FOR CLEANING.**

## Storage

1. Clean machine.
2. Cover all scratches with touch-up paint.
3. Covered or indoor storage is recommended.

## Preventative Maintenance Schedule

Item	Before Each Use	Every 5 Hours	Every 25 Hours	Every 50 Hours
Inspect/Clean Poly Mesh	X	X		
Check/Tighten Nuts & Bolts	X			
Check/Tighten Hoses	X			
Turn Hose End to End			X	
Rotate Hose				X
Clean Machine				X

# SERVICE AND MAINTENANCE

---

## Caring For Hoses

1. Inspect hoses before each use. If hoses have excessive wear, tears, or punctures, replace immediately.
2. To prolong the life of the hose, periodically rotate hose and turn hose end to end. Refer to Preventative Maintenance Schedule in this manual.
3. Avoid twists and sharp turns in the hoses, as they will increase wear on the hoses.
4. Avoid dragging the lower hose along the sides of buildings or other hard surfaces.

## Cleaning Poly Mesh

The poly mesh on the collection system is located inside the container hood. For best results, clean poly mesh regularly.

### Cleaning Instructions

1. Shut off engine.
2. Release the two (2) rubber latches under the rear of the hood. Open hood and brush debris off of both sides.
3. Close hood and re-latch.

**DO NOT USE THE COLLECTION SYSTEM WITHOUT POLY MESH SECURELY IN PLACE.**

# SERVICE AND MAINTENANCE

## Troubleshooting Guide



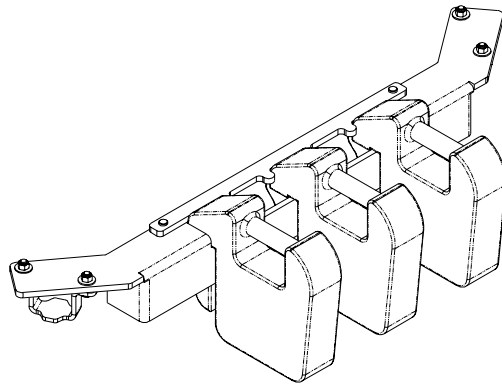
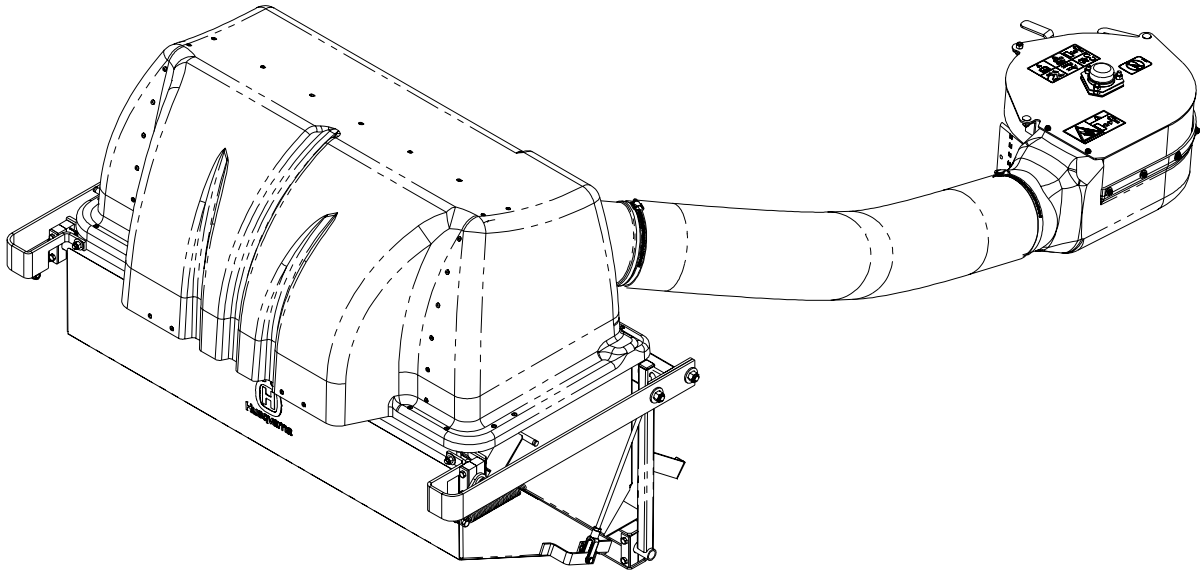
### DANGER

Before servicing unit, wait for all moving parts to come to a complete stop. Turn engine off and remove the spark plug wire.

PROBLEM	POSSIBLE CAUSE	CORRECTION
Loss of Vacuum.	<ol style="list-style-type: none"><li>1. Blower, hose or hood inlet clogged.</li><li>2. Hopper full.</li><li>3. Fan blades bent or broken.</li><li>4. Poly mesh plugged.</li></ol>	<ol style="list-style-type: none"><li>1. Remove hose and clean inlet.</li><li>2. Inspect and empty.</li><li>3. Replace/repair impeller.</li><li>4. Clean poly mesh.</li></ol>
Unusual vibration or noise.	<ol style="list-style-type: none"><li>1. Solid object jammed in unit.</li><li>2. Loose or missing bolts on unit.</li><li>3. Bent or damaged fan.</li></ol>	<ol style="list-style-type: none"><li>1. Check and remove any obstruction.</li><li>2. Tighten or replace bolts.</li><li>3. Replace/repair implerler.</li></ol>
Unit difficult to close.	<ol style="list-style-type: none"><li>1. Obstructions keeping door from completely closing.</li><li>2. Hood hinge bolts too tight.</li></ol>	<ol style="list-style-type: none"><li>1. Clear obstructions.</li><li>2. Loosen bolts.</li></ol>

# SPINDLE DRIVE ASSEMBLY

---



**NOTE:** Your Front Weight Bar may look different from those shown in this diagram.

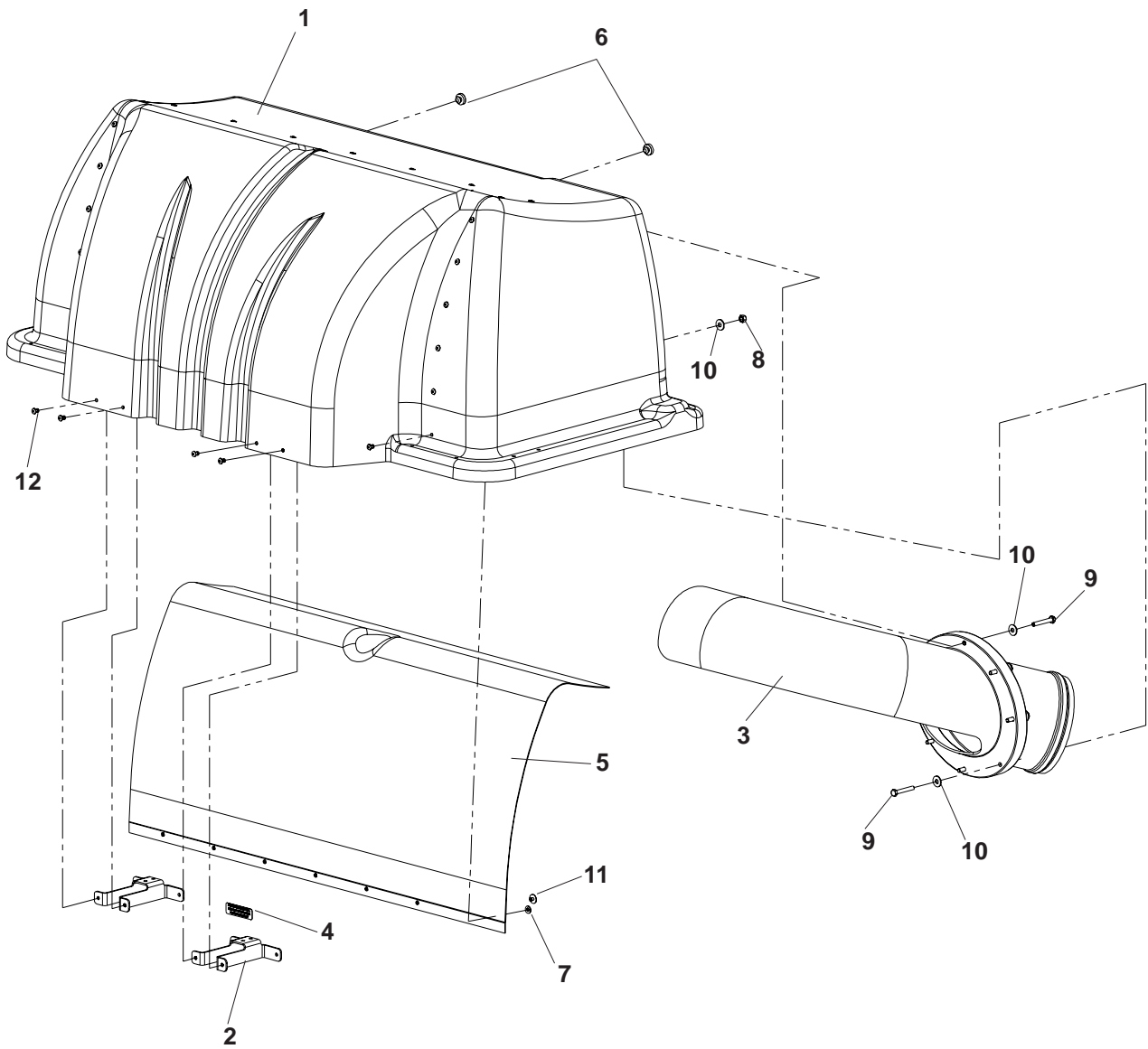


# HOPPER ASSEMBLY

---

ITEM	PART NO.	QTY.	DESCRIPTION
1	539 113754	1	HOPPER
2	539 104808	8	PILLOW BLOCK
3	539 113747	1	DOOR
4	539 113755	1	PLATE - BACKING
5	539 113748	1	TUBE, SUPPORT, HANDLE
6	539 113746	1	BELL CRANK
7	539 977465	2	YOKE, 3/8F
8	539 113722	2	ROD, DOOR
9	539 113749	1	PIN, PIVOT
10	539 113750	1	GUARD, LEFT
11	539 113751	1	GUARD, RIGHT
12	539 113790	1	HANDLE
13	539 113739	2	ROD END, 3/8-24, RH
14	539 990122	5	WASHER, 3/8, SAE
15	539 113753	1	TUBE, THREADED
16	539 990613	6	NUT, 3/8-16, WHIZLK
17	539 990655	4	HCS, 3/8-16 X 1 1/2, GR5
18	539 107315	2	SPRING
19	539 102656	2	SPACER
20	539 991046	8	HCS, 5/16-18 X 2 1/2, GR5
21	539 990717	8	NUT, 5/16-18, NYLOC
22	539 101572	2	HCS, 1/2-13 X 3, GR5
23	539 101331	4	NUT, 1/2-13, NYLOC
24	539 108732	4	NUT, 3/8-24, JAM
25	539 976979	4	NUT, 3/8-16, NYLOC
26	539 106492	1	HCS, 3/8-16 X 2 3/4, GR5
27	539 109232	2	PIN CLEVIS, 3/8 X 1 1/4
28	539 976988	2	HAIRPIN COTTER
29	539 990365	2	PIN, COTTER, 1/8 X 3/4
30	539 990302	1	SCREW, 1/4C X 3/8, THREAD FORMING
31	539 108369	2	HCS, 1/2-13 X 1 1/4, GR5
32	539 109554	2	WASHER, 1/2
33	539 990563	2	HCS, 3/8-16 X 1, GR5
34	539 990517	2	WASHER, 3/8
35	539 000090	1	GRIP, HANDLE
36	539 111230	1	BLOWER
37	539 111287	1	HOSE, L
38	539 109901	1	OVER CENTER BAND
39	539 097076	1	HOSE CLAMP, 6"-7"
40	539 113757	1	PLUG, RECTANGULAR TUBING
41	539 113758	2	PLUG, SQUARE TUBE
42	539 113731	1	BUSHING, 1"
43	539 200684	17	RIVET, 3/6, STAVEX
44	539 104807	4	REINFORCEMENT BAR
45	539 000019	3	WEIGHT CAST, FRONT
46	539 111055	1	DECAL, CROWN
47	539 102587	2	GROMMET, BUMPER

# HOOD ASSEMBLY



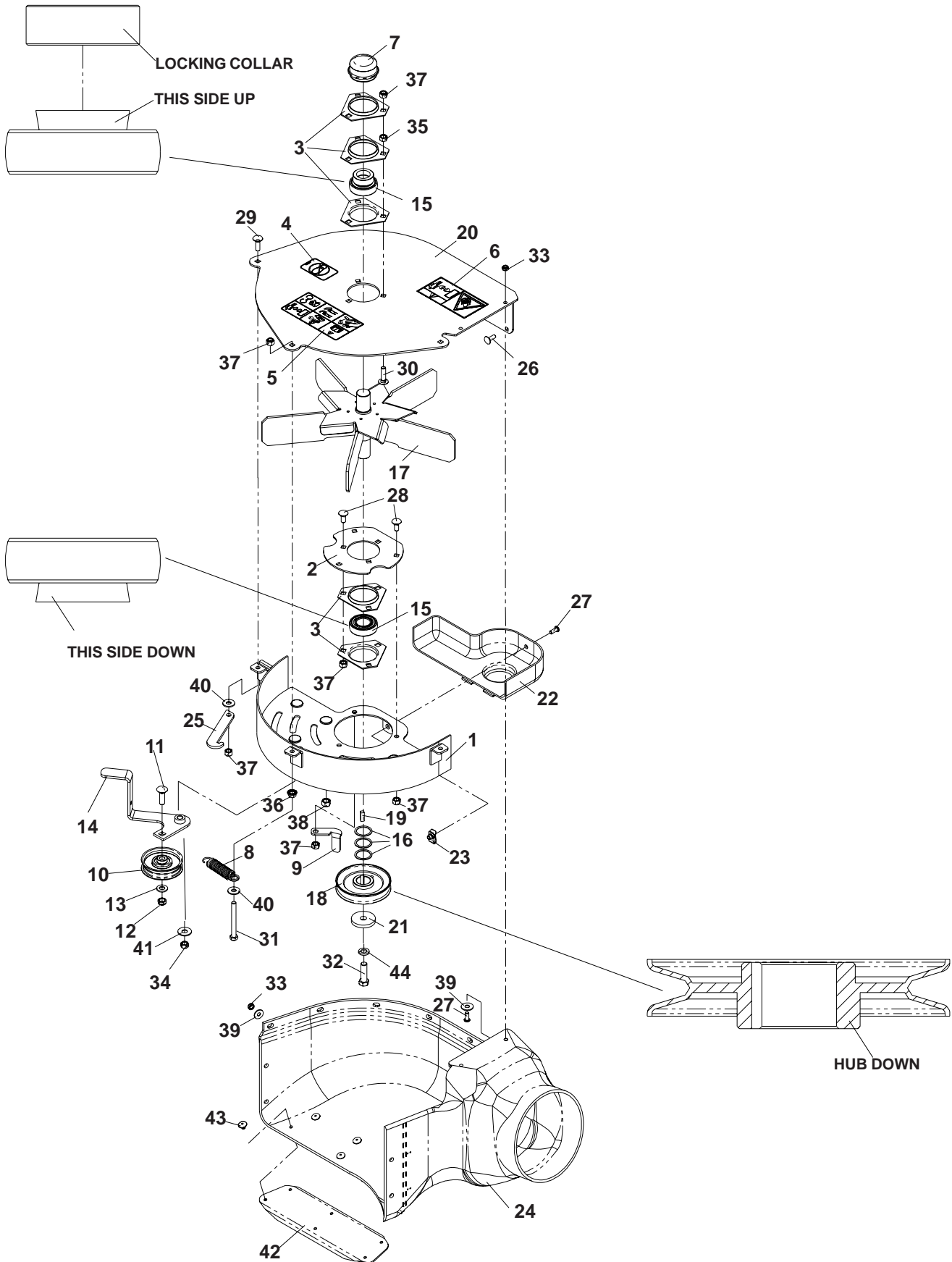


# HOOD ASSEMBLY

---

ITEM	PART NO.	QTY.	DESCRIPTION
1	539 111172	1	HOOD
2	539 111175	2	SUPPORT, DRAW LATCH
3	539 111182	1	INLET TUBE
4	539 111260	1	DECAL, VENTILATION
5	539 111183	1	MESH, POLY DIAMOND
6	539 102587	6	GROMMET, BUMPER
7	539 105408	21	WASHER, #10
8	539 976978	8	NUT, 1/4-20, NYLOC
9	539 991003	8	HCS, 1/4-20 X 1 3/4, GR5
10	539 990598	16	WASHER, 1/4
11	539 102744	7	RIVET, 3/16 X 1/4
12	539 200684	25	RIVET, 3/16, STAVEX

# BLOWER ASSEMBLY



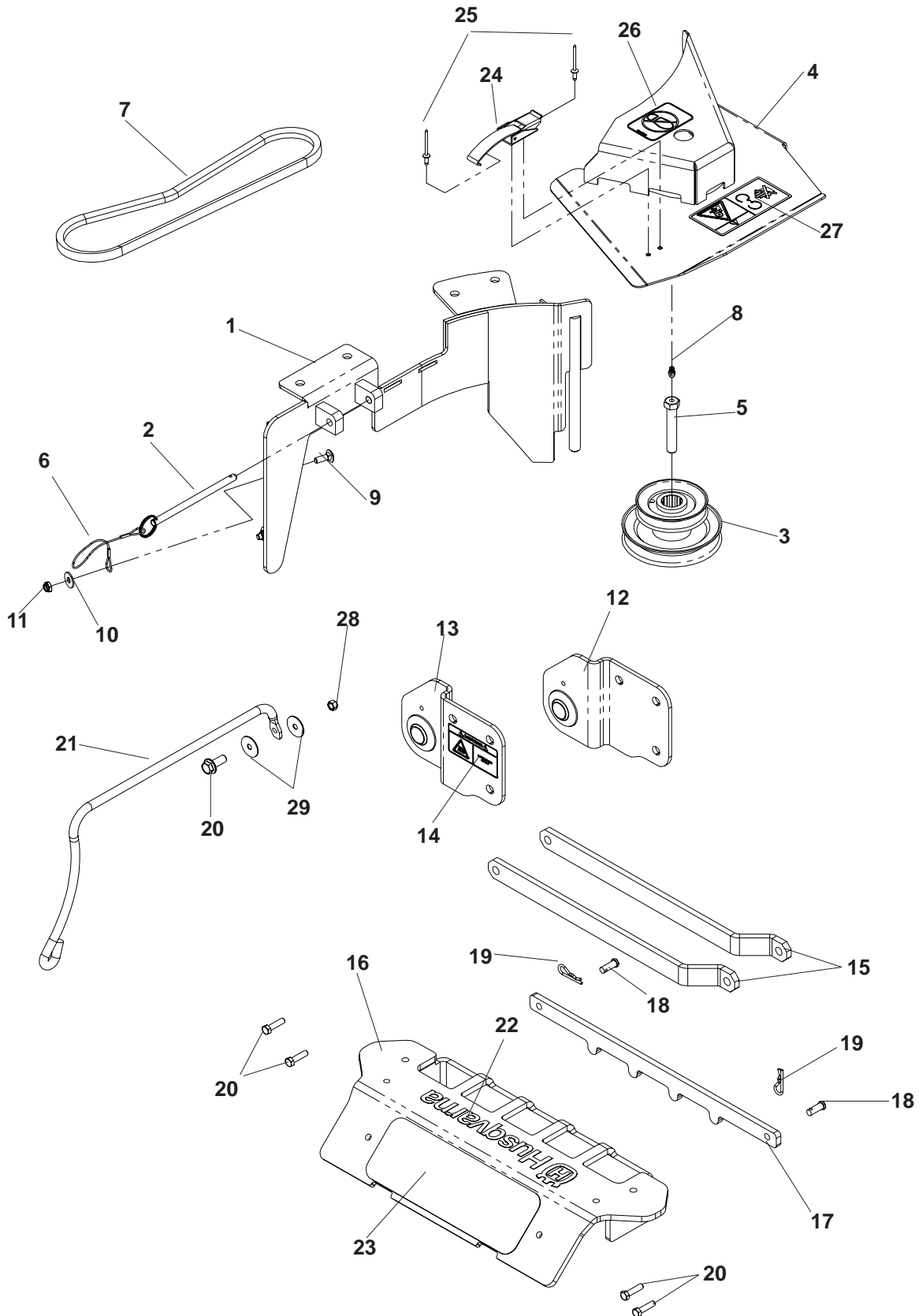
# BLOWER ASSEMBLY

---

ITEM	PART NO.	QTY	DESCRIPTION
1	539111225	1	FLOOR WELDMENT
2	539111227	1	BEARING PLATE
3	539102691	5	FLANGETTE
4	539105743	1	DECAL, NO STEP
5	539105785	1	DECAL, WARNING
6	539106741	1	DECAL, SERVERING
7	539102535	1	GREASE CAP
8	539916159	1	SPRING
9	539111184	1	BELT GUIDE
10	539106721	1	IDLER
11	539100413	1	RHSNB, 3/8-16 X 1 1/4, GR5
12	539200282	1	NUT, 3/8-16, JAM NYLOC
13	539990122	1	WASHER, 3/8, SAE
14	539111218	1	IDLER ARM
15	539106786	2	BEARING
16	539102244	3	BUSHING, MACHINE, 18 GA
17	539111332	1	FAN WELDMENT
18	539106713	1	SHEAVE, 4"
19	539102067	1	KEY, 1/4" SQ. X 3/4"
20	539111331	1	FAN COVER
21	539106504	1	WASHER, HEAVY
22	539111228	1	PULLEY SHIELD
23	539110813	1	RETAINER, 1/4C, "U" TYPE
24	539111220	1	BLOWER HOUSING
25	539111265	1	KEEPER, IDLER
26	539990074	6	RHSNB, 1/4-20 X 3/4, GR2
27	539111229	3	SCREW, 1/4-20 X 5/8, BTN, SKT HD
28	539880316	7	RHSNB, 5/16 X 3/4
29	539990208	1	RHSNB, 5/16-18 X 1, GR5
30	539100472	3	RHSNB, 5/16C X 1 1/4
31	539101721	1	HCS, 5/16-18 X 2 3/4, GR5
32	539100141	1	HCS, 7/16-20 X 1 1/2, GR5
33	539108120	8	NUT, 1/4C, THIN NYLOC
34	539991067	1	NUT, 5/16C, CENTERLOCK
35	539990196	3	NUT, 5/16C
36	539990585	1	NUT, 5/16C
37	539990717	12	NUT, 5/16C, NYLOC
38	539976979	4	NUT, 3/8C, NYLOC
39	539990598	8	WASHER, 1/4
40	539990692	2	WASHER, 5/16
41	539990517	1	WASHER, 3/8
42	539111340	1	BLOWER SUPPORT
43	539102744	6	RIVET
44	539990247	1	LOCKWASHER, 7/16

# DRIVE KIT ASSEMBLY

MODEL iZ, 48", 52" AND 61" DECKS



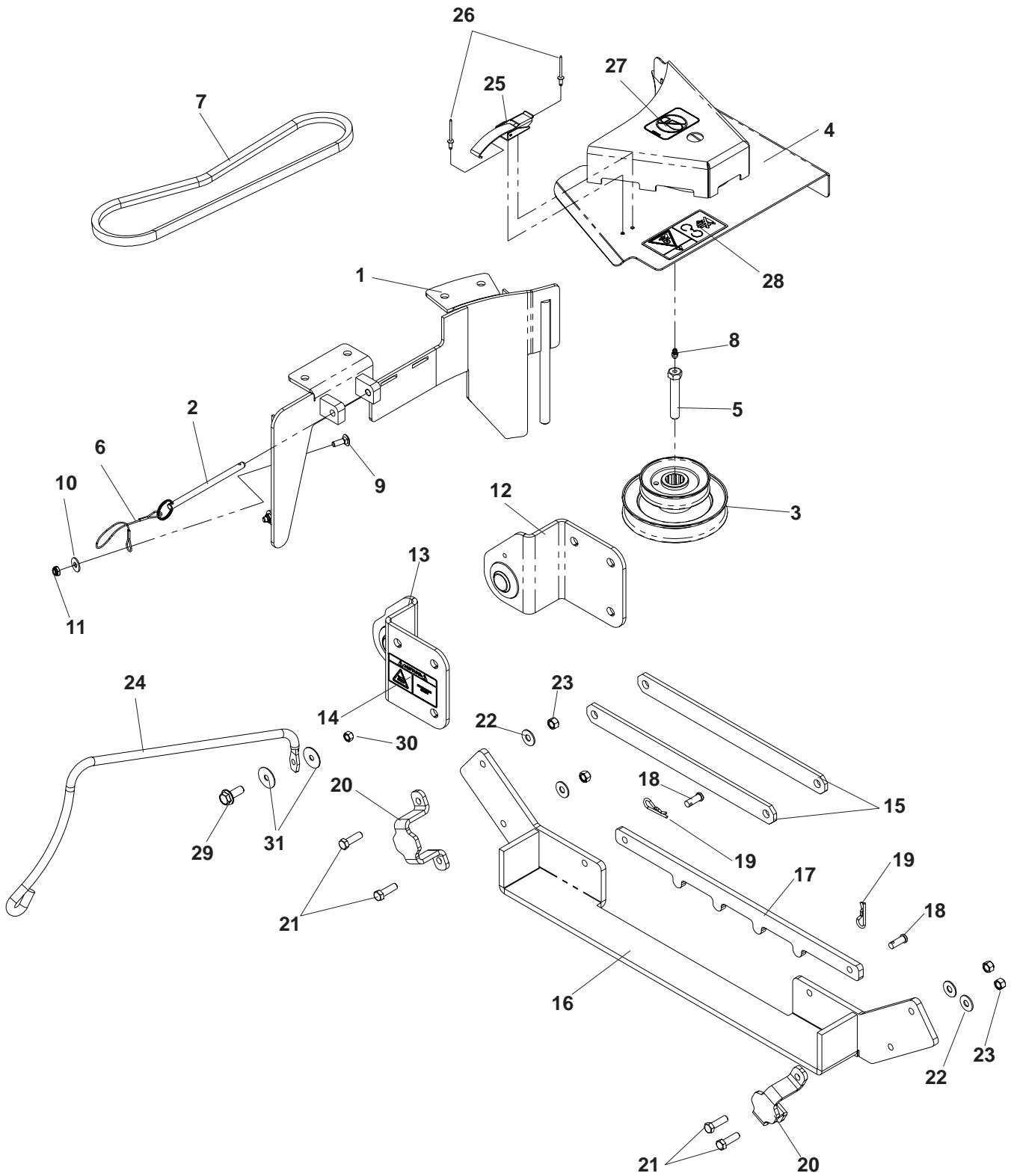
# DRIVE KIT ASSEMBLY

## MODEL iZ, 48", 52" AND 61" DECKS

ITEM	PART NO.	QTY	DESCRIPTION
1	539 111236	1	BLOWER DECK PLATE, 48" DECK
	539 111264	1	BLOWER DECK PLATE, 52" DECK
	539 111240	1	BLOWER DECK PLATE, 61" DECK
2	539 111270	1	PIN
3	539 111255	1	STACK PULLEY, 48" DECK
	539 111256	1	STACK PULLEY, 52" DECK
	539 111257	1	STACK PULLEY, 61" DECK
4	539 111272	1	BELT SHIELD, 48" DECK
	539 111273	1	BELT SHIELD, 52" DECK
	539 111274	1	BELT SHIELD, 61" DECK
5	539 112138	1	HCS, 7/16-20 X 2 1/2, GR8
6	539 102563	1	LANYARD
7	539 111305	1	BELT, 48" DECK
	539 111306	1	BELT, 52" DECK
	539 111307	1	BELT, 61" DECK
8	539 976998	1	ZERK
9	539 990074	4	RHSNB, 1/4-20 X 3/4, GR2
10	539 990598	4	WASHER, 1/4
11	539 108120	4	NUT, 1/4-20, JAM, NYLOC
12	539 111203	1	HITCH BRACKET, LEFT
13	539 111205	1	HITCH BRACKET, RIGHT
14	539 111212	1	DECAL, HOT SURFACE
15	539 113776	2	STRAP
16	539 111337	1	WEIGHT BAR
17	539 111313	1	HOLD DOWN, WEIGHT BAR
18	539 102049	2	CLEVIS PIN
19	539 108096	2	SPRING RETAINER
20	539 990627	5	HCS, 5/16-18 X 1 1/4, GR5
21	539 113018	1	HOSE SUPPORT
22	539 111047	1	DECAL, HUSQVARNA
23	539 977778	1	ABRASIVE PAD
24	539 109660	1	DRAW LATCH
25	539 110740	2	RIVET, BLIND, 5/32 DIA.
26	539 105743	1	DECAL, NO STEP
27	539 105744	1	DECAL, DANGER BELT DRIVES
28	539 990717	1	NUT, 5/16-18, NYLOC
29	539 990692	2	WASHER, 5/16

# DRIVE KIT ASSEMBLY

MODEL LZ, 52" AND 61" DECKS



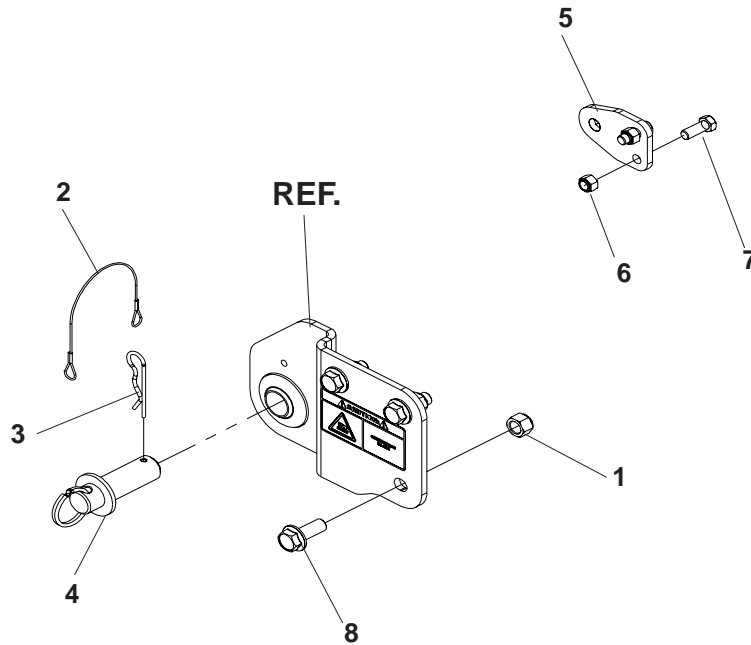
# DRIVE KIT ASSEMBLY

## MODEL LZ, 52" AND 61" DECKS

ITEM	PART NO.	QTY	DESCRIPTION
1	539 111264	1	BLOWER DECK PLATE, 52" DECK
	539 111240	1	BLOWER DECK PLATE, 61" DECK
2	539 111270	1	PIN
3	539 111256	1	STACK PULLEY, 52" DECK
	539 111257	1	STACK PULLEY, 61" DECK
4	539 111273	1	BELT SHIELD, 52" DECK
	539 111274	1	BELT SHIELD, 61" DECK
5	539 112138	1	HCS, 7/16-20 X 2 1/2, GR8
6	539 102563	1	LANYARD
7	539 111306	1	BELT, 52" DECK
	539 111307	1	BELT, 61" DECK
8	539 976998	1	ZERK
9	539 990074	4	RHSNB, 1/4-20 X 3/4, GR2
10	539 990598	4	WASHER, 1/4
11	539 108120	4	NUT, 1/4-20, JAM, NYLOC
12	539 111199	1	HITCH BRACKET, LEFT
13	539 111201	1	HITCH BRACKET, RIGHT
14	539 111212	1	DECAL, HOT SURFACE
15	539 113777	2	STRAP
16	539 020255	1	WEIGHT BAR
17	539 111313	1	HOLD DOWN, WEIGHT BAR
18	539 102049	2	CLEVIS PIN
19	539 108096	2	SPRING RETAINER
20	539 111259	2	WEIGHT KEEPER
21	539 976941	4	HCS, 3/8-16 X 1 1/4, GR5
22	539 990517	4	WASHER, 3/8
23	539 976979	4	NUT, 3/8-16, NYLOC
24	539 113018	1	HOSE SUPPORT
25	539 109660	1	DRAW LATCH
26	539 110740	2	RIVET, BLIND, 5/32 DIA.
27	539 105743	1	DECAL, NO STEP
28	539 105744	1	DECAL, DANGER BELT DRIVES
29	539 990627	1	HCS, 5/16-18 X 1 1/4, GR5
30	539 990717	1	NUT, 5/16-18, NYLOC
31	539 990692	2	WASHER, 5/16

# HARDWARE KIT

---



ITEM	PART NO.	QTY	DESCRIPTION
1	539 101331	10	NUT, 1/2-13, NYLOC
2	539 102563	2	LANYARD
3	539 111192	2	HAIRPIN
4	539 111206	2	HITCH PIN
5	539 111215	2	SUPPORT BRACKET
6	539 976979	4	NUT, 3/8-16, NYLOC
7	539 990563	4	HCS, 3/8-16 X 1, GR5
8	539 990622	10	BOLT, 1/2-13 X 1 1/4, WHIZLK
	539 990655	2	HCS, 3/8-16 X 1 1/2, GR5 (NOT SHOWN)









 **Husqvarna**