

# YTH220 Twin

**Spare parts**

**Ersatzteile**

**Pièces détachées**

**Reserve onderdelen**

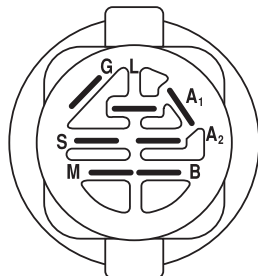
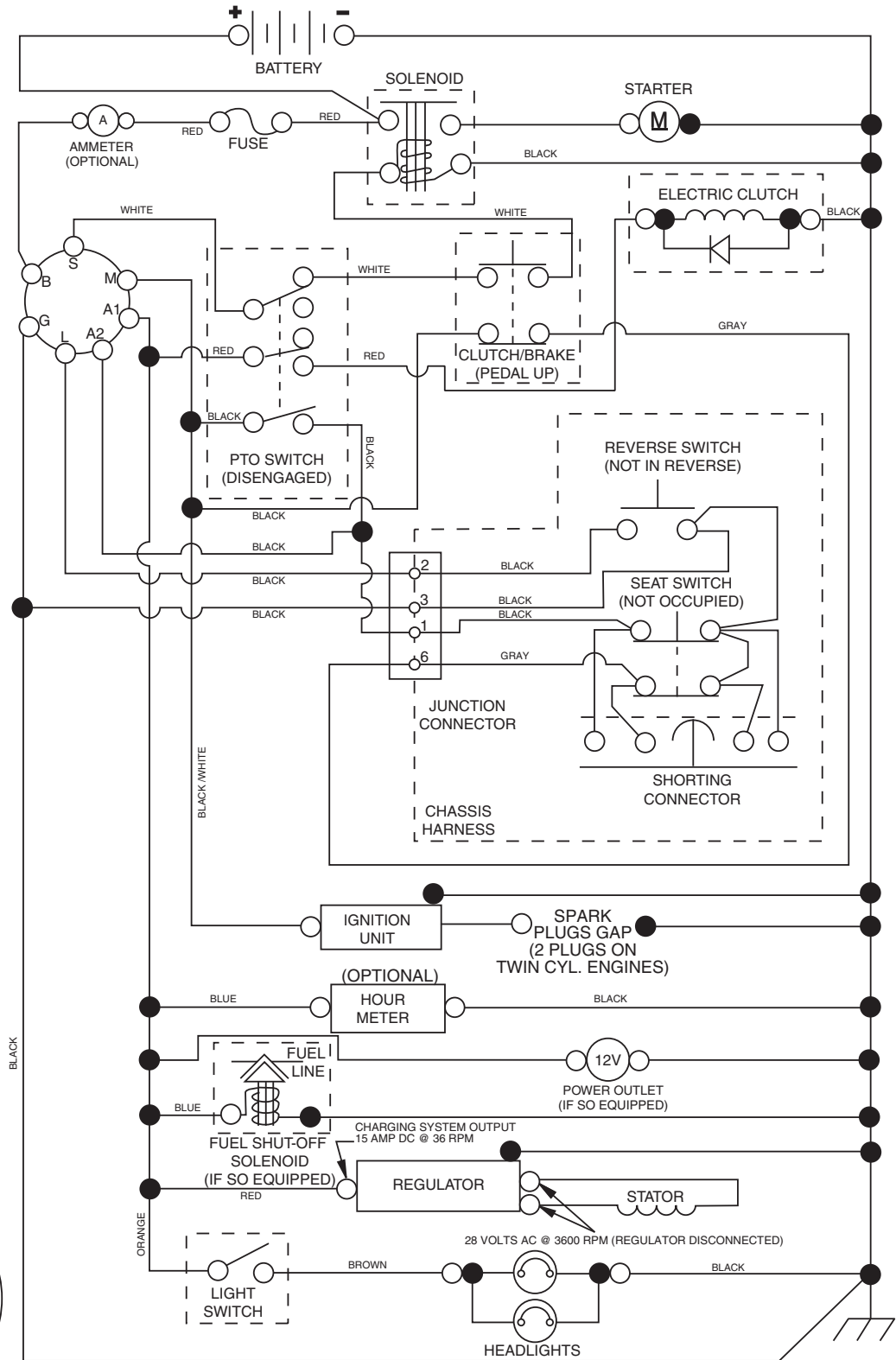
**Repuestos**

**Reservdelar**

# TRACTOR - - MODEL NO. CTH220 TWIN (96041002800), PRODUCT NO. 960 61 01-90

## SCHEMATIC 38

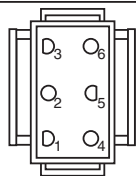
02928-194276\_Regulated-Tex



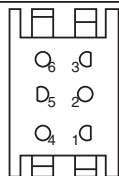
**IGNITION SWITCH**

| POSITION     | CIRCUIT    | "MAKE" |
|--------------|------------|--------|
| OFF          | M+G+A1     |        |
| RUN/OVERRIDE | B+A1       |        |
| RUN          | B+A1       | L+A2   |
| START        | B + S + A1 |        |

02928



CHASSIS HARNESS CONNECTOR (MATING SIDE)



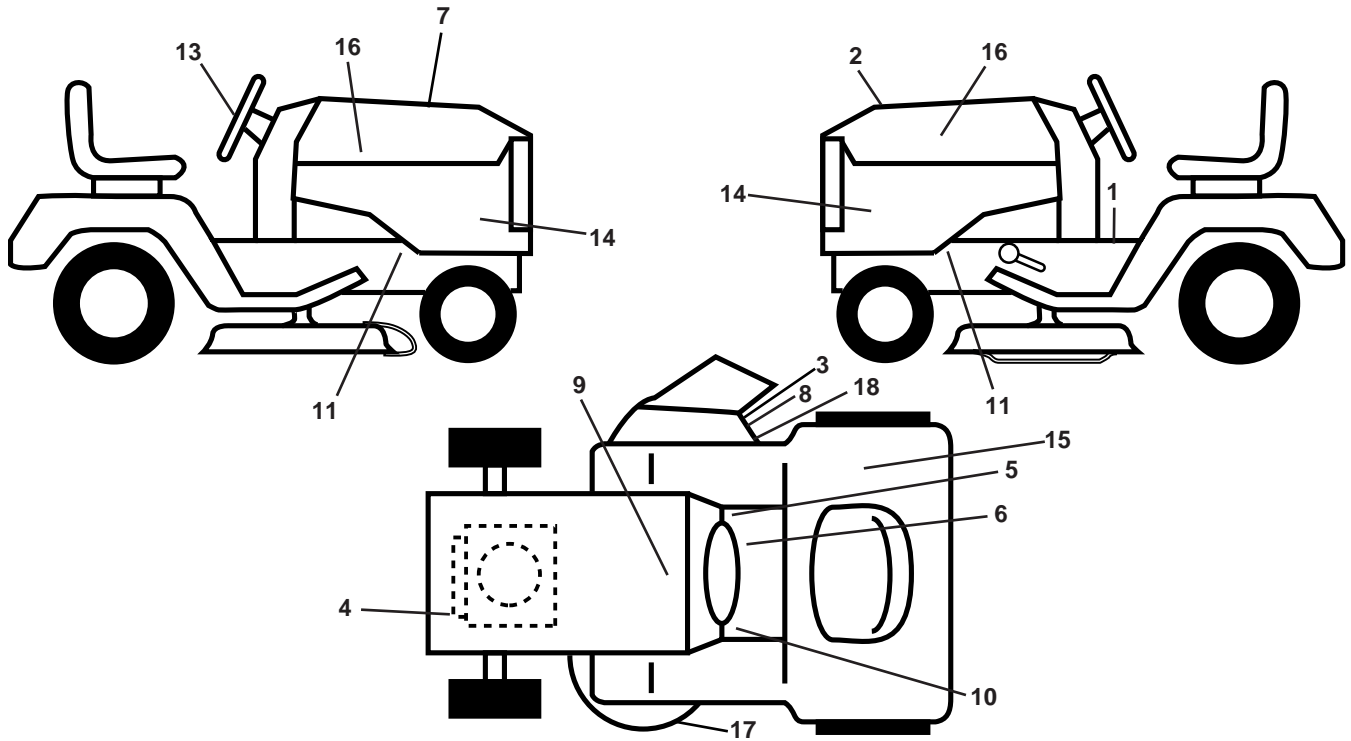
DASH HARNESS CONNECTOR (MATING SIDE)

**WIRING INSULATED CLIPS**  
**NOTE:** IF WIRING INSULATED CLIPS WERE REMOVED FOR SERVICING OF UNIT, THEY SHOULD BE REPLACED TO PROPERLY SECURE YOUR WIRING.

●  
NON-REMOVABLE CONNECTIONS

○  
REMOVABLE CONNECTIONS

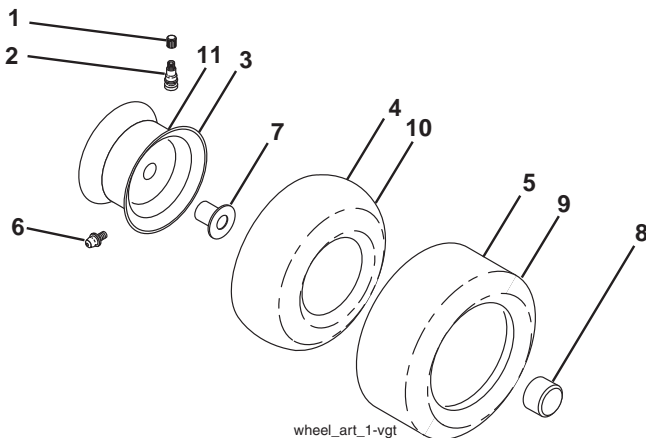
**TRACTOR - - MODEL NO. CTH220 TWIN (96041002800), PRODUCT NO. 960 61 01-90  
DECALS 27**



| KEY NO. | PART NO.     | DESCRIPTION                      |
|---------|--------------|----------------------------------|
| 1       | 532 40 03-89 | Decal, Warning Syms. CE          |
| 2       | 532 40 21-28 | Decal, Hood Insert               |
| 3       | 532 19 68-42 | Decal, Warning Deflect Cutfinger |
| 4       | 532 19 68-41 | Decal, Warning Eng. Syms.        |
| 5       | 532 14 08-37 | Decal, Saddle Brake Parking      |
| 6       | 532 17 83-02 | Decal, Oper Cruise Sym.          |
| 7       | 532 40 87-75 | Decal Replacement                |
| 8       | 532 18 21-66 | Decal, Cutfinger CE              |
| 9       | 532 14 50-05 | Decal, Battery Dnge/Poison       |
| 10      | 532 15 97-37 | Decal, Brake/Clutch Sym          |
| 11      | 532 15 97-36 | Decal, Chassis Hot Muffler       |
| 13      | 532 40 44-84 | Decal, Steering Whl              |

| KEY NO. | PART NO.     | DESCRIPTION               |
|---------|--------------|---------------------------|
| 14      | 532 40 88-46 | Decal, Panel Side         |
| 15      | 532 18 04-33 | Decal, Fender             |
| 16      | 532 40 28-32 | Decal, Hood Logo          |
| 17      | 532 19 87-85 | Decal, Mower Sch.         |
| 18      | 532 19 63-57 | Decal, Warning Cutfinger  |
| --      | 532 16 25-98 | Decal, Drawbar Load Limit |
| --      | 532 16 69-60 | Decal, Bypass             |
| --      | 532 40 17-71 | Pad, Footrest, LH         |
| --      | 532 40 37-73 | Pad, Footrest, RH         |
| --      | 532 40 87-88 | Manual, Owner's Euro      |

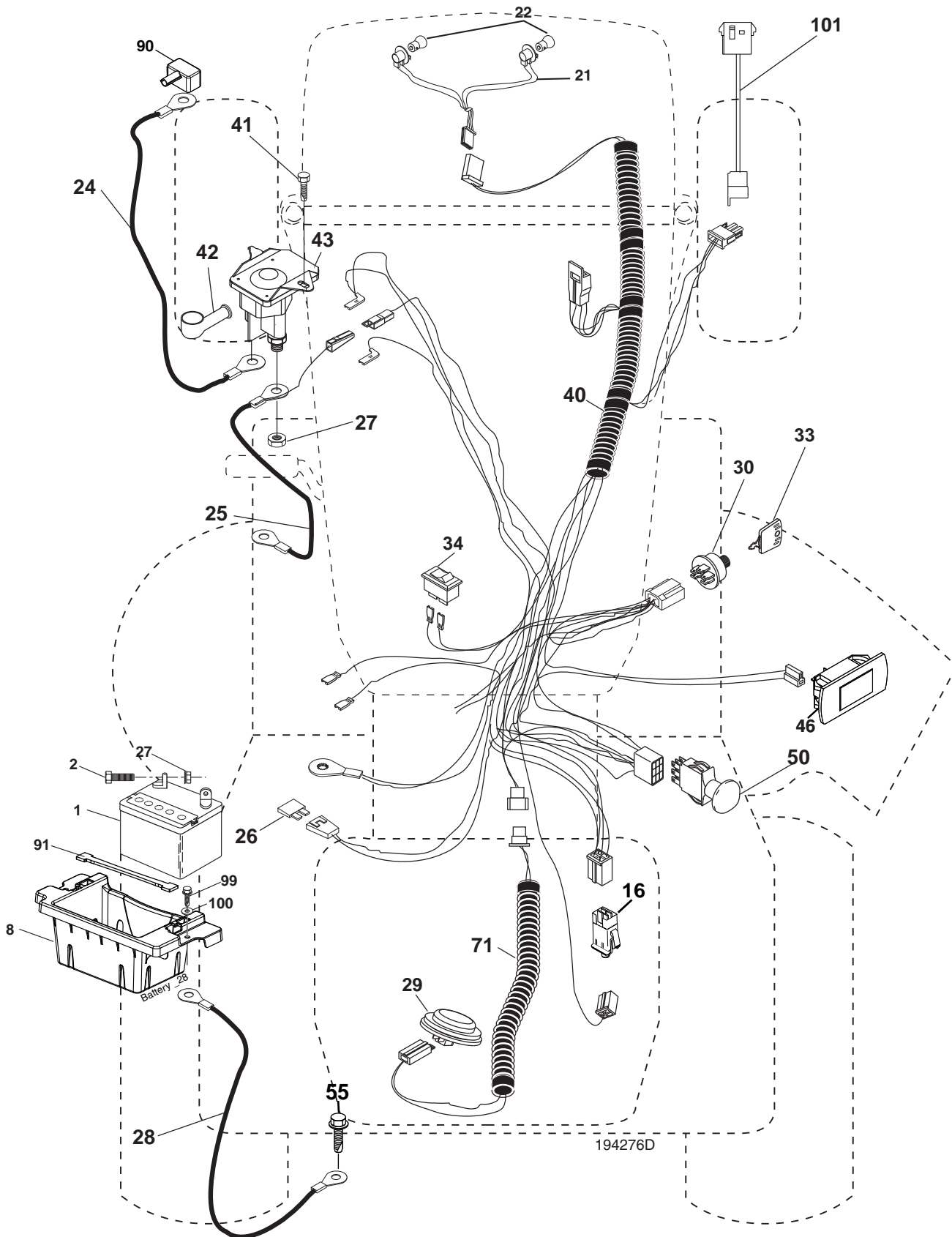
**WHEELS AND TIRES**



| KEY NO. | PART NO.     | DESCRIPTION                        |
|---------|--------------|------------------------------------|
| 1       | 532 05 91-92 | Cap, Valve, Tire                   |
| 2       | 532 06 51-39 | Stem, Valve                        |
| 3       | 532 14 45-09 | Rim Assembly, Front                |
| 4       | 532 00 81-34 | Tube, Front (Service Item Only)    |
| 5       | 532 10 62-30 | Tire, Front                        |
| 6       | 532 12 49-57 | Fitting, Grease (Front Wheel Only) |
| 7       | 532 12 49-59 | Bearing, Flange (Front Wheel Only) |
| 8       | 532 17 50-39 | Cap, Axle (Front Wheel Only)       |
| 9       | 532 18 47-08 | Tire, Rear                         |
| 10      | 532 00 71-54 | Tube, Rear (Service Item Only)     |
| 11      | 532 40 17-82 | Rim Assembly, Rear                 |
| --      | 532 14 43-34 | Sealant, Tire (10 oz. Tube)        |

**NOTE:** All component dimensions given in U.S. inches  
1 inch = 25.4 mm

TRACTOR - - MODEL NO. CTH220 TWIN (96041002800), PRODUCT NO. 960 61 01-90  
ELECTRICAL **32**

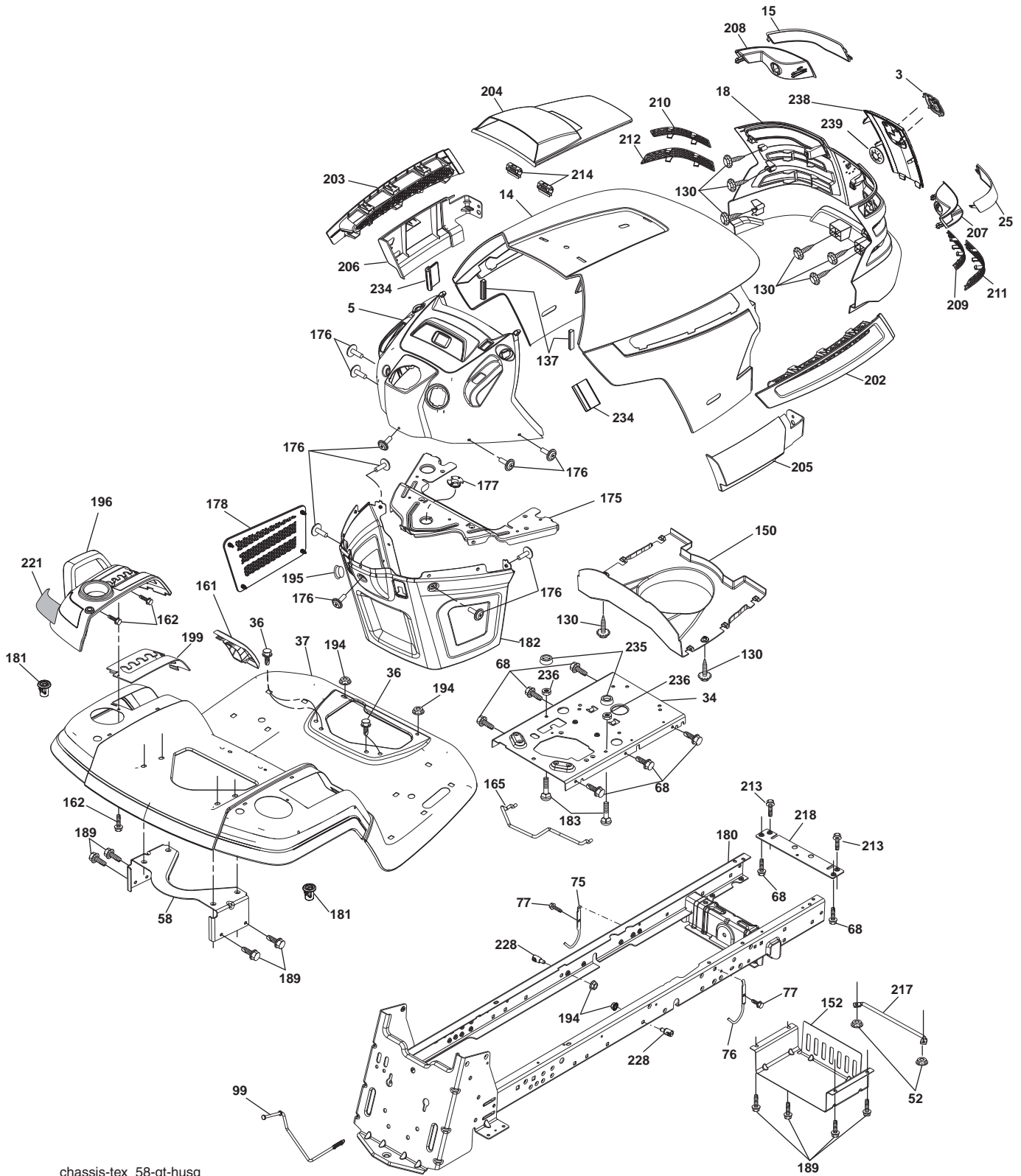


**TRACTOR - - MODEL NO. CTH220 TWIN (96041002800), PRODUCT NO. 960 61 01-90  
ELECTRICAL 32**

| <b>KEY<br/>NO.</b> | <b>PART<br/>NO.</b> | <b>DESCRIPTION</b>               |
|--------------------|---------------------|----------------------------------|
| 1                  | 532 14 49-27        | Battery                          |
| 2                  | 874 76 04-12        | Bolt Hex Hd 1/4-20 unc x 3/4     |
| 8                  | 532 18 64-91        | Battery Box                      |
| 16                 | 532 17 61-38        | Switch Interlock                 |
| 21                 | 532 18 37-59        | Harness Socket Light             |
| 22                 | 532 00 41-52        | Bulb, Light # 1156               |
| 24                 | 532 40 02-53        | Cable Battery                    |
| 25                 | 532 19 88-93        | Cable Starter                    |
| 26                 | 532 17 51-58        | Fuse                             |
| 27                 | 873 51 04-00        | Nut Keps Hex 1/4-20 unc          |
| 28                 | 532 14 54-91        | Cable Ground 21" Blk 6 Ga.       |
| 29                 | 532 40 15-45        | Switch Seat                      |
| 30                 | 532 19 33-50        | Switch Ignition                  |
| 33                 | 532 14 04-01        | Key Ignition Molded Generic      |
| 34                 | 532 11 07-12        | Switch Light/Reset               |
| 40                 | 532 40 11-04        | Harness Ignition Dash            |
| 41                 | 817 72 04-08        | Screw Thd Cut 1/4-20 x 1/2       |
| 42                 | 532 13 15-63        | Cover Terminal Red               |
| 43                 | 532 19 25-07        | Solenoid                         |
| 46                 | 532 40 17-63        | Gauge Hourmeter                  |
| 50                 | 532 17 46-51        | Switch PTO                       |
| 55                 | 817 06 05-12        | Screw Thdrol 5/16-18 x 3/4       |
| 71                 | 532 19 42-76        | Harness Ignition                 |
| 90                 | 532 40 07-24        | Cover Terminal Battery           |
| 91                 | 532 19 02-70        | Strap Battery                    |
| 99                 | 817 67 04-12        | Screw Hexwsh Thdrol 1/4-20 x 3/4 |
| 100                | 819 09 14-16        | Washer 9/32 x 7/8 x 16 Ga.       |
| 101                | 532 19 83-17        | Pigtail                          |

**NOTE:** All component dimensions given in U.S. inches  
1 inch = 25.4 mm

TRACTOR - - MODEL NO. CTH220 TWIN (96041002800), PRODUCT NO. 960 61 01-90  
CHASSIS AND ENCLOSURES **39**



chassis-tex\_58-gt-husq

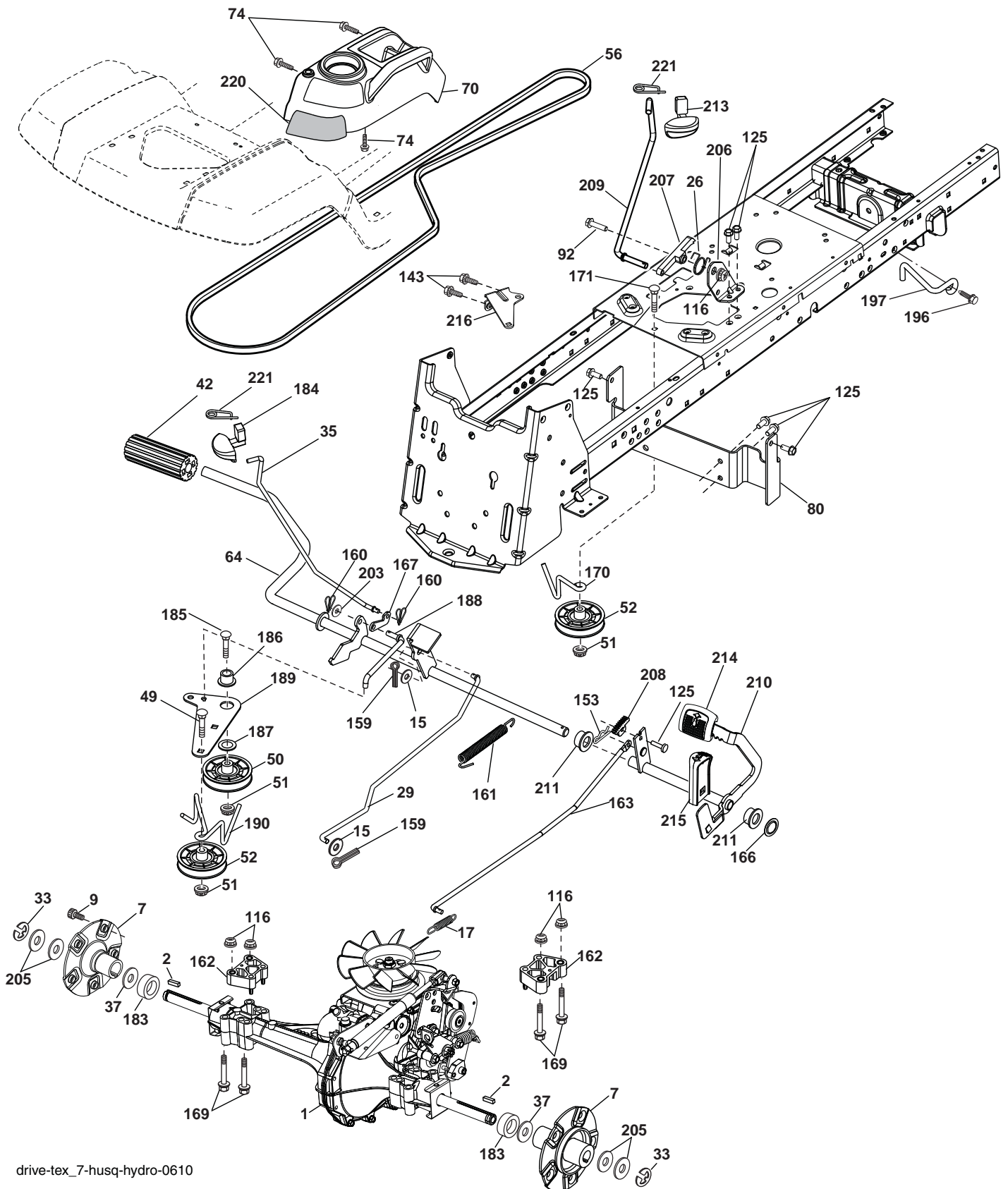
**TRACTOR - - MODEL NO. CTH220 TWIN (96041002800), PRODUCT NO. 960 61 01-90  
CHASSIS AND ENCLOSURES 39**

| KEY NO. | PART NO.     | DESCRIPTION                    |
|---------|--------------|--------------------------------|
| 3       | 532 40 50-12 | Logo                           |
| 5       | 532 40 87-01 | Dash                           |
| 14      | 532 41 10-46 | Hood                           |
| 15      | 532 19 89-07 | Lens LH                        |
| 18      | 532 40 86-07 | Grille                         |
| 25      | 532 19 89-06 | Lens RH                        |
| 34      | 532 19 61-25 | Plate Engine                   |
| 36      | 817 06 05-12 | Screw 5/16-18 x 3/4            |
| 37      | 532 40 18-25 | Fender                         |
| 52      | 873 68 05-00 | Nut Lock 5/16-18               |
| 58      | 532 19 43-14 | Bracket Fender                 |
| 68      | 817 49 05-08 | Screw 5/16-18 x 1/2            |
| 75      | 532 40 26-80 | Rod Upstop LH                  |
| 76      | 532 40 26-81 | Rod Upstop RH                  |
| 77      | 817 00 06-16 | Screw 3/8-16 x 1               |
| 99      | 532 40 66-42 | Rod Bypass Asm.                |
| 130     | 532 19 16-11 | Screw 10 x 3/4 Single Lead Hex |
| 137     | 532 40 75-90 | Bumper Hood                    |
| 150     | 532 19 85-12 | Duct Heat Hood                 |
| 152     | 532 19 95-35 | Shield Browning/Debris         |
| 161     | 532 40 18-26 | Console Fuel Window            |
| 162     | 532 14 24-32 | Screw Hex Wsh Hi-Lo 1/4 x 1/2  |
| 165     | 532 19 68-26 | Bracket Support Tank           |
| 175     | 532 19 63-04 | Crossmember                    |
| 176     | 532 40 07-76 | Screw 10-24 x 5/8 Rnd Qdrx     |
| 177     | 532 19 52-27 | Bushing Steering               |
| 178     | 532 19 97-82 | Cargo Asm. Net                 |
| 180     | 532 19 54-77 | Chassis                        |
| 181     | 532 40 30-25 | Bushing Mtg. Fender Crgo.      |

| KEY NO. | PART NO.     | DESCRIPTION                   |
|---------|--------------|-------------------------------|
| 182     | 532 19 47-87 | Dash Lower                    |
| 183     | 874 78 05-20 | Bolt 5/16-18 x 1-1/4          |
| 189     | 817 00 05-12 | Screw 5/16-18 x 3/4           |
| 194     | 873 90 05-00 | Nut Lock Hex Flange 5/16-18   |
| 195     | 532 40 41-37 | Plug Hole Dash Lower 12V      |
| 196     | 532 40 02-99 | Console Asm. Deck Lift        |
| 199     | 532 19 82-59 | Plate Deck Lift               |
| 202     | 532 40 30-48 | Vent Side Hood RH             |
| 203     | 532 40 30-76 | Vent Side Hood LH             |
| 204     | 532 19 89-04 | Vent Asm Hood Top             |
| 205     | 532 40 17-09 | Skirt Hood Side RH            |
| 206     | 532 40 17-11 | Skirt Hood Side LH            |
| 207     | 532 19 71-98 | Bezel RH                      |
| 208     | 532 19 71-99 | Bezel LH                      |
| 209     | 532 19 91-30 | Insert Hex Top RH             |
| 210     | 532 19 91-31 | Insert Hex Top LH             |
| 211     | 532 19 91-32 | Insert Hex Bottom RH          |
| 212     | 532 19 91-33 | Insert Hex Bottom LH          |
| 213     | 874 76 05-12 | Bolt Hex Hd 5/16-18 unc x 3/4 |
| 214     | 532 19 91-45 | Clip Retainer                 |
| 217     | 532 15 65-24 | Rod Pivot                     |
| 218     | 532 19 63-95 | Hood Stop                     |
| 221     | 532 19 89-09 | Reflector LH                  |
| 228     | 532 19 51-61 | Stud Fastner                  |
| 234     | 532 40 47-42 | Bumper Hood                   |
| 235     | 532 40 61-29 | Spacer Fender                 |
| 236     | 873 93 05-00 | Nut Lock 5/16-18 unc          |
| 238     | 532 40 86-06 | Trim                          |
| 239     | 532 11 04-52 | Nut Push                      |

**NOTE:** All component dimensions given in U.S. inches  
1 inch = 25.4 mm

TRACTOR - - MODEL NO. CTH220 TWIN (96041002800), PRODUCT NO. 960 61 01-90  
DRIVE **40**



drive-tex\_7-husq-hydro-0610

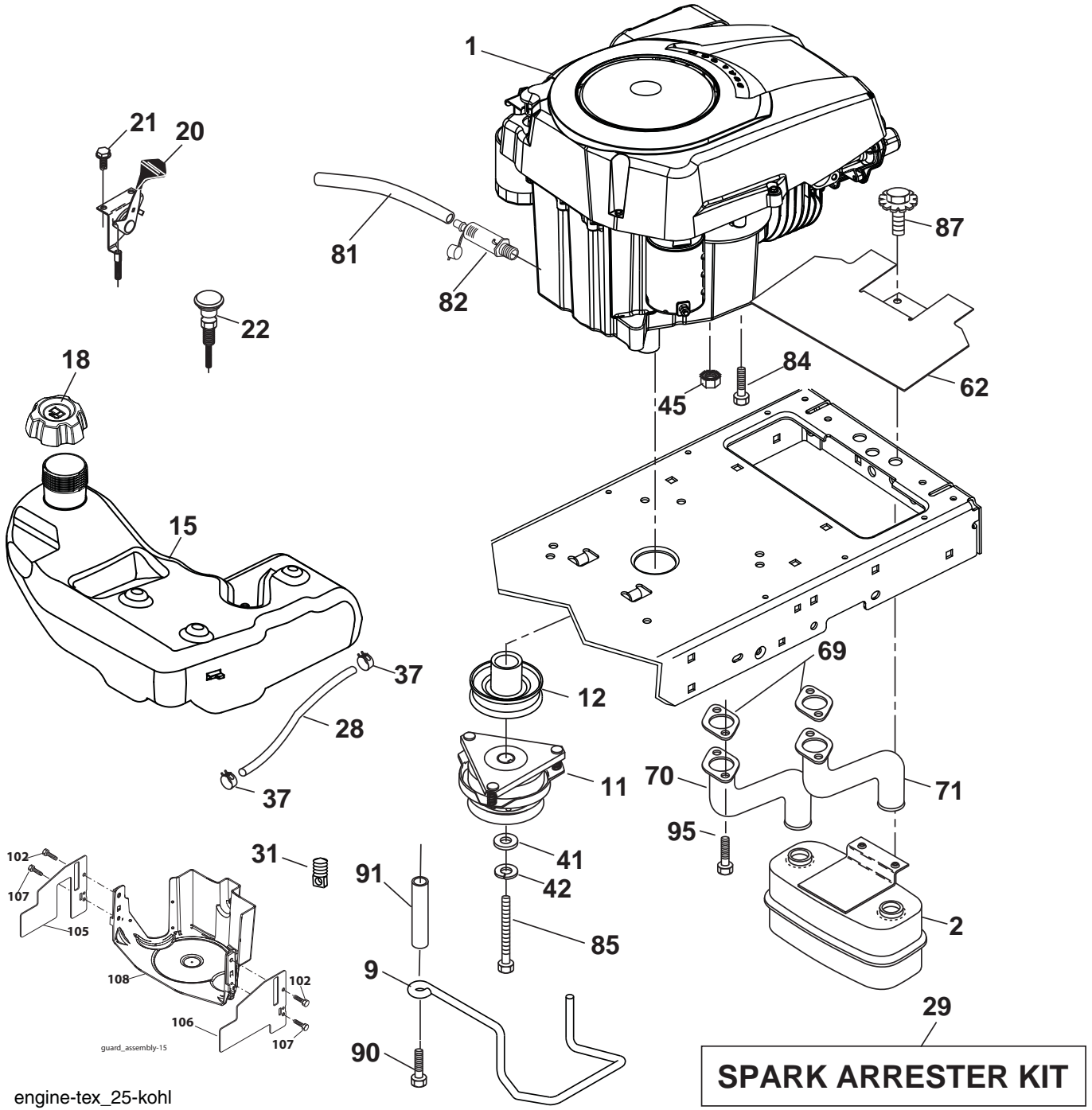


**TRACTOR - - MODEL NO. CTH220 TWIN (96041002800), PRODUCT NO. 960 61 01-90  
DRIVE **40****

| KEY NO. | PART NO.     | DESCRIPTION                     |
|---------|--------------|---------------------------------|
| 1       | -----        | Transaxle, Hydro 318-0610       |
| 2       | 532 18 62-11 | Key Square                      |
| 7       | 532 19 98-44 | Hub Asm. Wheel Rear             |
| 9       | 532 14 00-80 | Bolt Hub Wheel Rear             |
| 15      | 819 13 13-16 | Washer 13/32 x 13/16 x 16 Ga.   |
| 17      | 532 19 72-96 | Spring, Brake                   |
| 26      | 532 19 96-79 | Spring Return Cruise            |
| 29      | 532 19 94-67 | Rod, Brake                      |
| 33      | 812 00 00-01 | Ring E                          |
| 35      | 532 19 95-91 | Rod, Brake, Park                |
| 37      | 532 12 17-49 | Washer                          |
| 42      | 532 12 48-72 | Cover, Foot Pedal               |
| 49      | 872 11 06-14 | Bolt                            |
| 50      | 532 19 43-27 | Pulley Idler Flat               |
| 51      | 873 90 06-00 | Lock Nut 3/8-16                 |
| 52      | 532 19 43-26 | Idler V-Groove 910" Offset      |
| 56      | 532 14 02-18 | V-Belt, Drive                   |
| 64      | 532 19 78-65 | Shaft Asm. Pedal Brake Control  |
| 70      | 532 40 05-30 | Console Asm.                    |
| 74      | 532 14 24-32 | Screw 1/4 x 1/2                 |
| 80      | 532 40 05-07 | Bracket Strap Torque            |
| 92      | 874 76 05-20 | Bolt Fin Hex 5/16-18 unc x 1.25 |
| 116     | 873 90 05-00 | Nut Lock Hex Flange 5/16-18     |
| 125     | 817 00 05-12 | Screw 5/16-18 x 3/4             |
| 143     | 817 49 05-08 | Screw Thdrol 5/16-18 x 1/2      |
| 153     | 532 12 47-88 | Retainer Spring                 |
| 159     | 876 02 04-12 | Pin Cotter 1/8 x 3/4            |
| 160     | 532 16 94-84 | Retainer Clip                   |
| 161     | 532 19 54-03 | Spring, Return, Clutch          |
| 162     | 532 19 57-85 | Spacer Transaxle                |
| 163     | 532 19 90-00 | Rod Pedal Control               |
| 166     | 532 19 72-90 | Nut Push .625                   |
| 167     | 532 40 52-57 | Latch Brake Parking             |

| KEY NO. | PART NO.     | DESCRIPTION                   |
|---------|--------------|-------------------------------|
| 169     | 874 49 05-60 | Bolt Hex Flghd 5/16-18 x 3.75 |
| 170     | 532 19 43-22 | Keeper Belt Centerspan        |
| 171     | 872 11 06-16 | Bolt                          |
| 183     | 532 40 04-24 | Spacer Split                  |
| 184     | 532 40 31-18 | Handle Parking Brake          |
| 185     | 872 11 06-20 | Bolt Rdhd Sqnk 3/8-16 x 2-1/2 |
| 186     | 532 19 43-21 | Spacer Retainer               |
| 187     | 819 13 32-10 | Washer                        |
| 188     | 532 19 43-23 | Link Clutch Ground Drive      |
| 189     | 532 19 43-17 | Bellcrank Ground Drive        |
| 190     | 532 19 43-18 | Keeper Bellcrank Ground Drive |
| 196     | 817 00 06-16 | Screw 3/8-16 x 1              |
| 197     | 532 19 97-69 | Clutch Anti-Rotation Link     |
| 203     | 819 11 11-16 | Washer 11/32 x 11/16 x 16 Ga. |
| 205     | 532 12 17-48 | Washer                        |
| 206     | 532 19 78-67 | Bracket Mount Latch Cruise    |
| 207     | 532 19 78-68 | Latch Control Cruise          |
| 208     | 532 19 78-69 | Gear Sector Control Cruise    |
| 209     | 532 19 95-92 | Rod Control Cruise            |
| 210     | 532 19 78-60 | Rocker Asm. Pedal Control     |
| 211     | 532 12 01-83 | Bearing Nylon                 |
| 213     | 532 40 31-19 | Knob Control Cruise           |
| 214     | 532 40 17-22 | Pedal Forward                 |
| 215     | 532 40 17-23 | Pedal Reverse                 |
| 216     | 532 19 61-31 | Bracket Pulley Idler          |
| 220     | 532 19 89-08 | Reflector RH                  |
| 221     | 532 40 31-87 | Retainer Spring Clip Handle   |
| 222     | 819 21 20-10 | Washer 21/32 x 1-1/4 x 10 Ga. |

**NOTE:** All component dimensions given in U.S. inches  
1 inch = 25.4 mm



engine-tex\_25-kohl

**TRACTOR - - MODEL NO. CTH220 TWIN (96041002800), PRODUCT NO. 960 61 01-90  
ENGINE 24**

| KEY NO. | PART NO.     | DESCRIPTION                        |
|---------|--------------|------------------------------------|
| 1       | -----        | Engine Kohl Model No. SV715        |
| 2       | 532 14 97-23 | Muffler                            |
| 9       | 532 19 43-19 | Keeper Belt Engine                 |
| 11      | 532 17 93-35 | Clutch Electric                    |
| 12      | 532 40 24-63 | Pulley Engine                      |
| 15      | 532 19 34-99 | Tank Fuel 4.0                      |
| 18      | 532 19 42-67 | Cap Asm                            |
| 20      | 532 18 29-37 | Control Throttle                   |
| 21      | 532 19 16-11 | Screw 10 x 3/4 Single Lead Hex     |
| 22      | 532 19 15-96 | Control Choke                      |
| 28      | 532 14 21-58 | Fuel Line                          |
| 29      | 532 13 71-80 | Spark Arrester Kit                 |
| 31      | 532 14 50-06 | Clip Push-In                       |
| 37      | 532 12 34-87 | Clamp Hose                         |
| 41      | 532 12 61-97 | Washer 1-1/2 OD x 15/32 ID x .250  |
| 42      | 810 04 07-00 | Washer Lock 7/16                   |
| 45      | 873 51 04-00 | Nut Keps Hex 1/4-20 unc            |
| 62      | 532 14 66-29 | Shield Heat Muffler                |
| 69      | -----        | Gasket (Order part from Eng. Mfg.) |
| 70      | 532 14 66-99 | Tube Exhaust LH                    |
| 71      | 532 14 67-00 | Tube Exhaust RH                    |
| 81      | 532 14 84-56 | Tube Drain Oil Easy                |

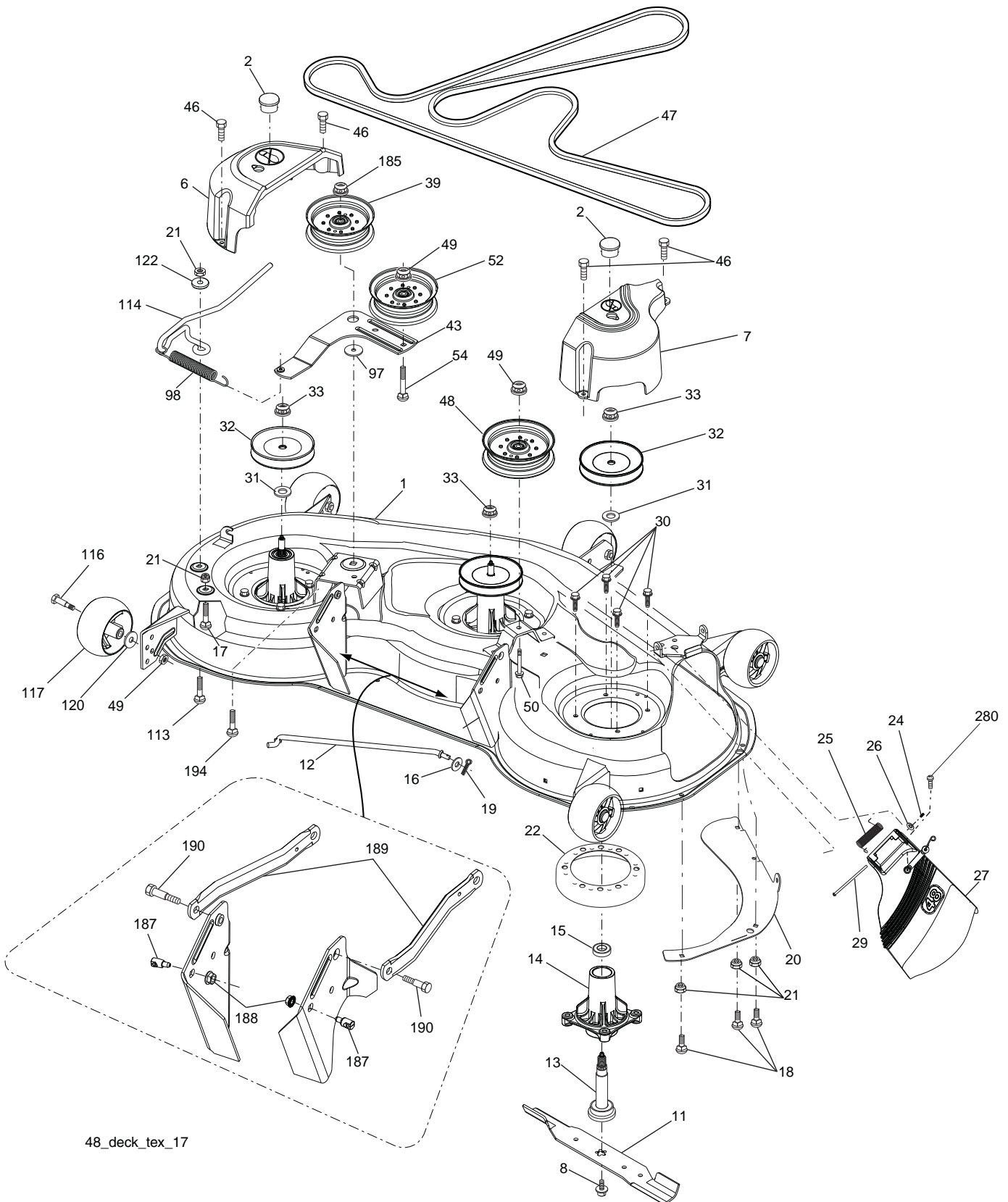
| KEY NO. | PART NO.     | DESCRIPTION                     |
|---------|--------------|---------------------------------|
| 82      | 532 18 16-54 | Plug Drain Oil Easy             |
| 84      | 817 12 06-16 | Screw 3/8-16 x 1                |
| 85      | 532 17 99-53 | Bolt Hex 7/16-20 x 3.75 Gr. 5   |
| 87      | 532 19 82-39 | Bolt 5/16-18 unc x 1 w/Sems     |
| 90      | 817 00 06-16 | Screw 3/8-16 x 1                |
| 91      | 532 18 74-95 | Bushing                         |
| 95      | 532 19 23-34 | Screw Socket Head 5/16-18 x .75 |
| 102     | 817 00 05-12 | Screw 5/16-18 x 3/4             |
| 105     | 532 41 06-16 | Shield Side LH                  |
| 106     | 532 41 06-17 | Shield Side RH                  |
| 107     | 532 13 77-29 | Screw 1/4-20 x 5/8              |
| 108     | 532 41 05-32 | Cover Asm Engine                |

**NOTE:** All component dimensions given in U.S. inches  
1 inch = 25.4 mm

For engine service and replacement parts, call the toll free number for your engine manufacturer listed below:

|                   |                |
|-------------------|----------------|
| Briggs & Stratton | 1-800-233-3723 |
| Kohler Co.        | 1-800-544-2444 |
| Tecumseh Products | 1-800-558-5402 |
| Honda Engines     | 1-800-426-7701 |
| Kawasaki          | 1-949-460-5688 |

**TRACTOR - - MODEL NO. CTH220 TWIN (96041002800), PRODUCT NO. 960 61 01-90  
MOWER DECK [44]**



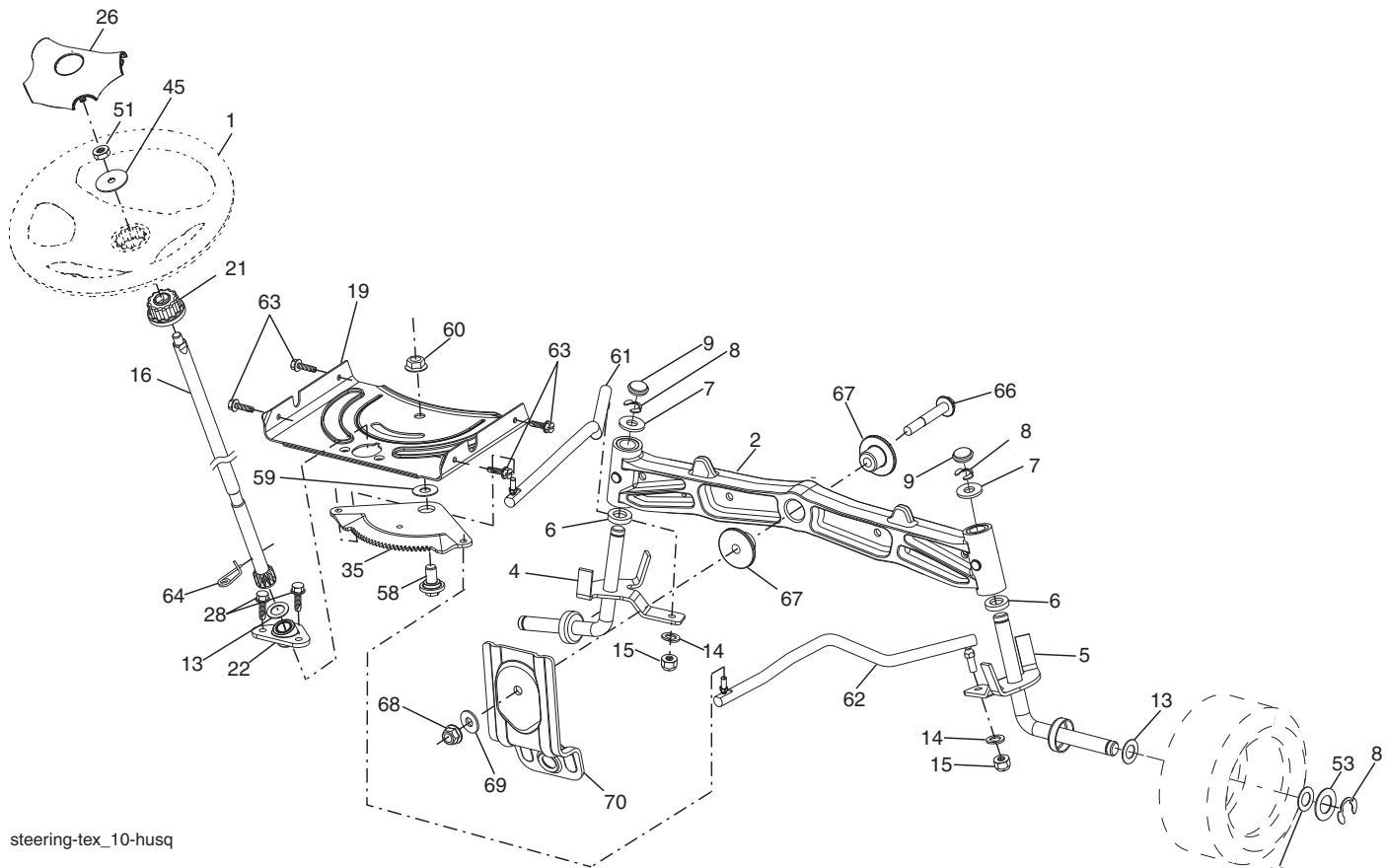
48\_deck\_tex\_17

**TRACTOR - - MODEL NO. CTH220 TWIN (96041002800), PRODUCT NO. 960 61 01-90  
MOWER DECK 44**

| KEY<br>NO. | PART<br>NO.  | DESCRIPTION                   | KEY<br>NO. | PART<br>NO.  | DESCRIPTION  |
|------------|--------------|-------------------------------|------------|--------------|--|
| 1          | 532 40 42-65 | Deck Weldment Mower           | 39         | 532 19 73-80 | Pulley, Idler  |
| 2          | 532 17 83-45 | Plug Hole Mandrel             | 43         | 532 19 60-65 | Arm, Idler   |
| 6          | 532 19 94-05 | Cover Mandrel LH              | 46         | 532 13 77-29 | Screw, Thdroll. 1/4-20 x 5/8                             |
| 7          | 532 19 94-06 | Cover Mandrel RH              | 47         | 532 19 72-42 | Belt Deck Drive  |
| 8          | 532 17 43-65 | Bolt 7/16 Asm. Blade          | 48         | 532 19 31-97 | Pulley Idler   |
| 11         | 532 18 00-54 | Blade High Lift               | 49         | 873 90 06-00 | Nut, Lock Flg. 3/8-16 unc                                |
| 12         | 532 40 03-37 | Rod Anti Sway                 | 50         | 817 49 06-36 | Screw TT 3/8-16 x 2-1/4                                  |
| 13         | 532 18 72-91 | Shaft Asm. w/Lower Bearing    | 52         | 532 19 73-79 | Pulley Idler Clutching                                   |
| 14         | 532 18 72-81 | Housing, Mandrel              | 54         | 872 11 06-12 | Bolt Carr. Sh 3/8-16 x 1-1/2 Gr. 5                       |
| 15         | 532 11 04-85 | Bearing, Ball, Mandrel        | 97         | 532 17 85-15 | Washer Hardened  |
| 16         | 819 13 13-12 | Washer 13/32 x 13/16 x 12 Ga. | 98         | 532 19 61-05 | Spring Drive   |
| 17         | 872 11 05-05 | Bolt 5/16-18 x 5/8            | 113        | 872 11 05-08 | Bolt Rdhd Sqnk 5/16-18 x 3/4                             |
| 18         | 872 14 05-05 | Bolt RdHd 5/16-18 unc x 5/8   | 114        | 532 19 74-51 | Rod Tension Relief                                       |
| 19         | 532 19 42-08 | Pin Cotter 5/16 Bow Tie Lock  | 116        | 532 19 34-06 | Bolt, Shoulder   |
| 20         | 532 17 43-78 | Baffle Vortex                 | 117        | 532 17 48-73 | Gauge Wheel  |
| 21         | 873 68 05-00 | Nut, Crownlock 5/16-18 unc    | 120        | 819 13 20-12 | Washer 13/32 x 1-1/4 x 12 Ga.                            |
| 22         | 532 17 44-93 | Stripper Mandrel              | 122        | 532 18 75-57 | Bushing Tension Relief                                   |
| 24         | 532 10 53-04 | Cap Sleeve                    | 185        | 873 90 07-00 | Nut Lock Flange 7/16-14 Gr. 5                            |
| 25         | 532 17 81-02 | Spring, Torsion               | 187        | 532 19 51-61 | Stud Fastener w/"D" Anti-Rotation                        |
| 26         | 532 11 04-52 | Nut, Push                     | 188        | 873 90 05-00 | Nut Lock Hex Flange                                      |
| 27         | 532 41 18-61 | Deflector Shield              | 189        | 532 19 51-85 | Arm Susp. Mower Rear                                     |
| 29         | 532 13 14-91 | Rod, Hinge                    | 190        | 532 19 65-39 | Bolt Shoulder  |
| 30         | 532 17 39-84 | Screw, Thdroll Washer Head    | 194        | 872 14 07-16 | Bolt Carr Sqnk 7/16-24 x 2                               |
| 31         | 532 18 76-90 | Washer, Spacer Mower Vented   | 280        | 532 40 36-04 | Screw, 10-24 x 3/4                                       |
| 32         | 532 15 35-32 | Pulley, Mandrel               | --         | 532 18 72-92 | Mandrel Asm. Service (Includes<br>Key Nos. 13-15 and 33) |
| 33         | 532 40 02-34 | Nut, Flg. Top Lock            | --         | 532 40 34-06 | Replacement Mower, Complete                              |

**NOTE:** All component dimensions given in U.S. inches  
1 inch = 25.4 mm

**TRACTOR - - MODEL NO. CTH220 TWIN (96041002800), PRODUCT NO. 960 61 01-90**  
**STEERING ASSEMBLY [41]**



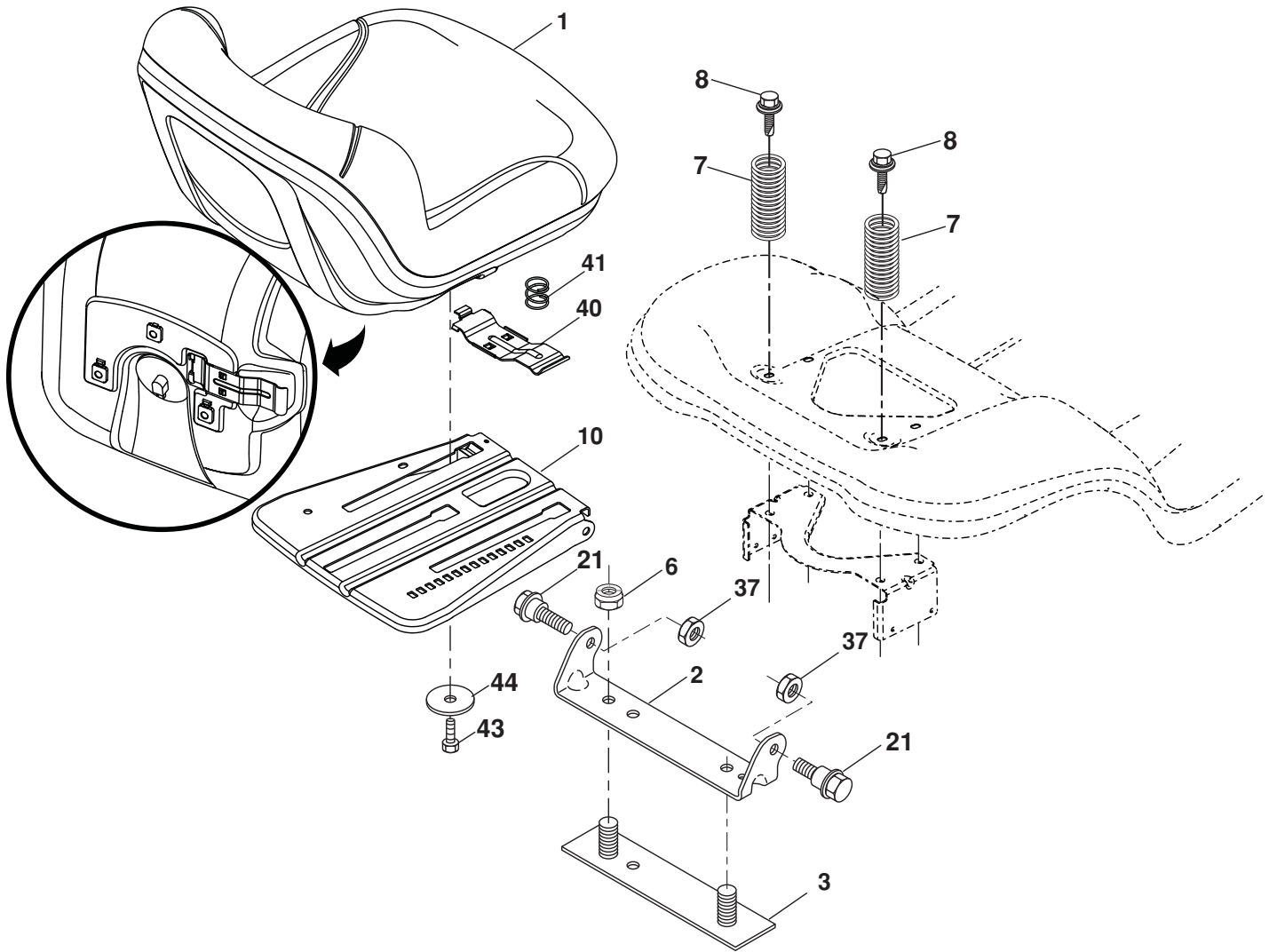
steering-tex\_10-husq

| KEY NO. | PART NO.     | DESCRIPTION                   |
|---------|--------------|-------------------------------|
| 1       | 532 19 36-51 | Wheel, Steering               |
| 2       | 532 19 59-68 | Axle Asm., Front              |
| 4       | 532 40 31-72 | Spindle Asm., LH              |
| 5       | 532 40 31-73 | Spindle Asm., RH              |
| 6       | 532 12 49-31 | Bearing, Race Thrust Harden   |
| 7       | 532 12 17-48 | Washer 25/32 x 1-5/8 x 16 Ga. |
| 8       | 812 00 00-29 | Ring, Klip #T5304-75          |
| 9       | 532 12 12-32 | Cap, Spindle                  |
| 13      | 532 12 17-49 | Washer 25/32 x 1-1/4 x 16 Ga. |
| 14      | 810 04 06-00 | Washer, Lock Hvy Hlcl Spr 3/8 |
| 15      | 873 54 06-00 | Nut, Crown Lock 3/8-24 unf    |
| 16      | 532 19 47-46 | Shaft Steering                |
| 19      | 532 19 47-29 | Plate Steering                |
| 21      | 532 18 67-37 | Adapter, Wheel Steering       |
| 22      | 532 19 48-45 | Bushing, Strg. Blk            |
| 26      | 532 19 36-52 | Insert, Wheel Steering        |
| 28      | 817 00 06-12 | Screw 3/8-16 x 3/4            |
| 35      | 532 19 47-32 | Gear, Sector Plate            |

| KEY NO. | PART NO.     | DESCRIPTION                       |
|---------|--------------|-----------------------------------|
| 45      | 819 18 38-12 | Washer 9/16 x 2-3/8 x 12 Ga.      |
| 51      | 873 94 08-00 | Nut Hex Jam Toplock 1/2-20 unf    |
| 53      | 532 18 89-67 | Wshr Hardened .793 x 1.637 x .060 |
| 58      | 532 19 47-47 | Bolt Shoulder Sector Pivot CFM    |
| 59      | 532 19 47-48 | Washer Thrust Sector Steering     |
| 60      | 873 97 10-00 | Nut Flange Lock 5/8-11            |
| 61      | 532 19 47-40 | Draglink LH                       |
| 62      | 532 19 47-41 | Draglink, RH                      |
| 63      | 817 06 05-12 | Screw 5/16-18 x 3/4               |
| 64      | 532 19 98-49 | Retainer Clip Spring Steering     |
| 66      | 871 02 07-48 | Bolt Hex Fghd 7/16-14 x 3 Serr    |
| 67      | 532 19 47-37 | Bushing PM Front Axle             |
| 68      | 873 90 07-00 | Nut Lock Flange 7/16-14 Gr. 5     |
| 69      | 532 19 91-62 | Washer 1.5 x .505 x .118          |
| 70      | 532 19 61-97 | Bracket Deck Susp. Front          |

**NOTE:** All component dimensions given in U.S. inches  
 1 inch = 25.4 mm

**TRACTOR - - MODEL NO. CTH220 TWIN (96041002800), PRODUCT NO. 960 61 01-90  
SEAT ASSEMBLY 42**



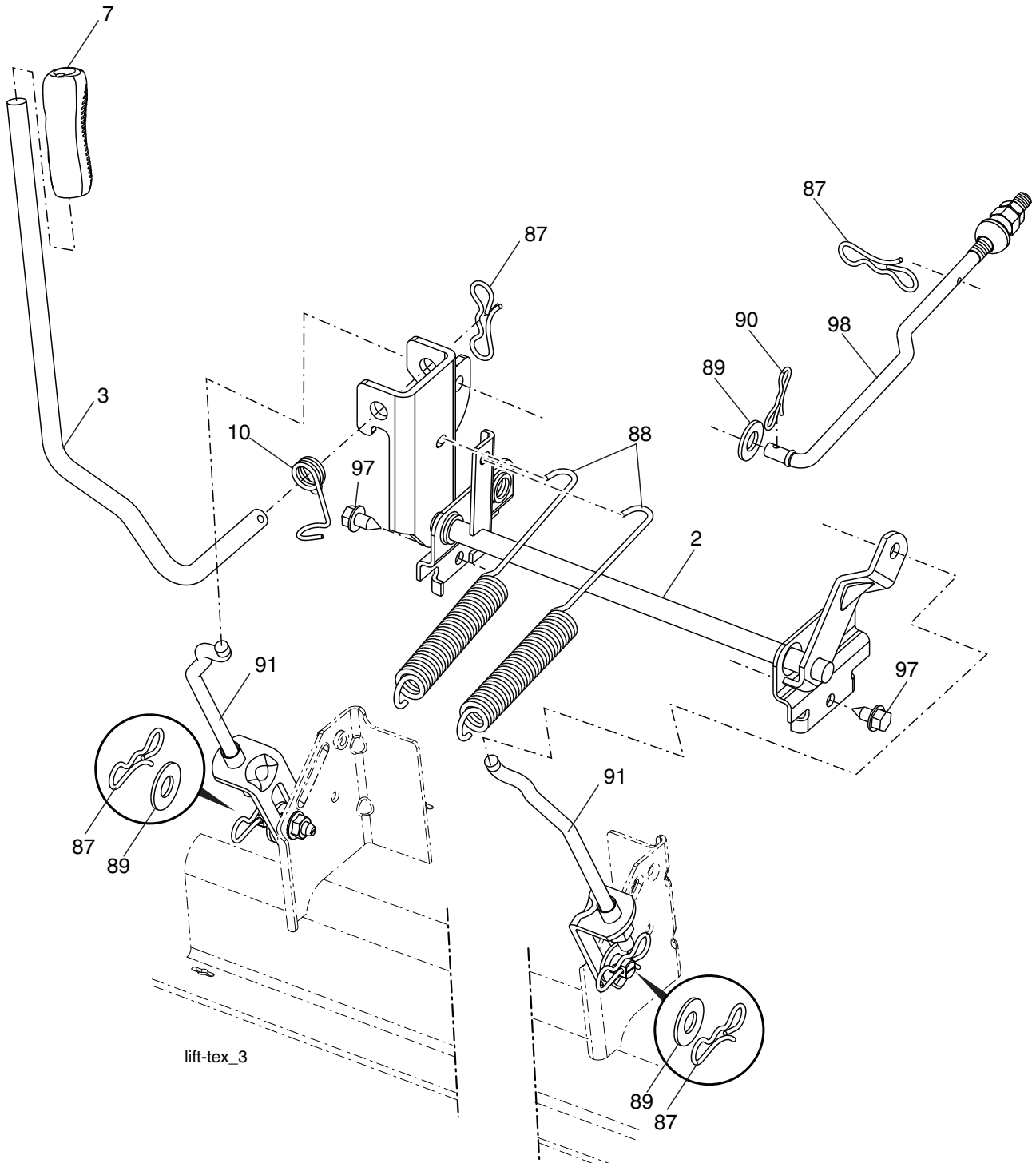
seat-tex\_7-vgt

| KEY NO. | PART NO.     | DESCRIPTION                  |
|---------|--------------|------------------------------|
| 1       | 532 40 66-21 | Seat                         |
| 2       | 532 18 01-66 | Bracket Pivot Fender         |
| 3       | 532 14 06-75 | Strap, Asm Fender            |
| 6       | 873 80 06-00 | Nut, Lock W/Ins. 3/8-16 unc  |
| 7       | 532 12 41-81 | Spring, Seat Cprsn           |
| 8       | 532 17 18-77 | Bolt 5/16-18 uncx 3/4 w/Sems |
| 10      | 532 19 69-77 | Pan, Seat                    |

| KEY NO. | PART NO.     | DESCRIPTION                   |
|---------|--------------|-------------------------------|
| 21      | 532 17 18-52 | Bolt, Shoulder 5/16-18        |
| 37      | 873 80 05-00 | Nut, Lock 5/16-18 unc         |
| 40      | 532 19 76-61 | Handle Slide Seat             |
| 41      | 532 19 82-00 | Spring Latch Seat             |
| 43      | 874 76 06-12 | Bolt 3/8-16 x 3/4             |
| 44      | 819 13 38-12 | Washer 13/32 x 2-3/8 x 12 Ga. |

**NOTE:** All component dimensions given in U.S. inches  
1 inch = 25.4 mm

**TRACTOR - - MODEL NO. CTH220 TWIN (96041002800), PRODUCT NO. 960 61 01-90  
MOWER LIFT **45****



| KEY NO. | PART NO.     | DESCRIPTION                  |
|---------|--------------|------------------------------|
| 2       | 532 19 52-23 | Shaft Asm., Lift             |
| 3       | 532 19 52-30 | Lever Asm., Lift Rh          |
| 7       | 532 41 15-55 | Grip, Lever                  |
| 10      | 532 19 63-14 | Spring Torsion               |
| 87      | 532 19 42-09 | Pin Cotter 7/16 Bow Tie Lock |
| 88      | 532 19 53-04 | Spring Lift Assist           |
| 89      | 819 19 19-12 | Washer Clear Zinc            |

| KEY NO. | PART NO.     | DESCRIPTION                      |
|---------|--------------|----------------------------------|
| 90      | 532 19 42-08 | Pin Cotter 5/16 Bow Tie Lock     |
| 91      | 532 19 79-84 | Link Lift Susp Mower Rear        |
| 97      | 817 06 06-12 | Screw 3/8-16 x .75 Smgml Tap/R.Z |
| 98      | 532 19 52-64 | Link Lift Susp. Front Mower      |

**NOTE:** All component dimensions given in U.S. inches  
1 inch = 25.4 mm



