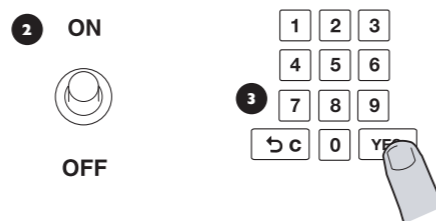
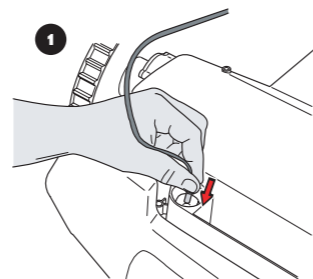


4

LINKING AUTOMOWER™ TO THE LOOP GENERATOR/CHARGER

See chapter 3.7 in the Operator's Manual

1. Connect the loop generator/charger charging cable to the mower's charger contact. The boundary loop must be connected to a mains connected loop generator/charger.
2. Set the main switch to *ON* position.
3. Select and enter a four digit PIN code. All combinations except 0000 are permitted.
4. Press the YES button.
5. Confirm the selected PIN code by re-entering the PIN code.
6. Press the YES button.



When you have selected a PIN code, the mower and loop generator/charger are linked to each other and the mower can be operated.

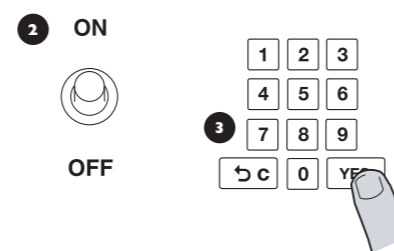
5

STARTING AND STOPPING AUTOMOWER™

See chapters 4.1 and 4.2 in the Operator's Manual.

STARTING

1. Open the control panel cover by pressing the *STOP* button.
2. Set the main switch to *ON* position.
3. Enter the PIN code, confirm with the YES button.
4. Close the cover.

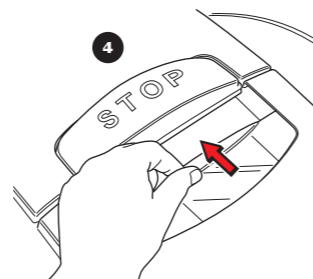


STOPPING

Press the *STOP* button.

USE

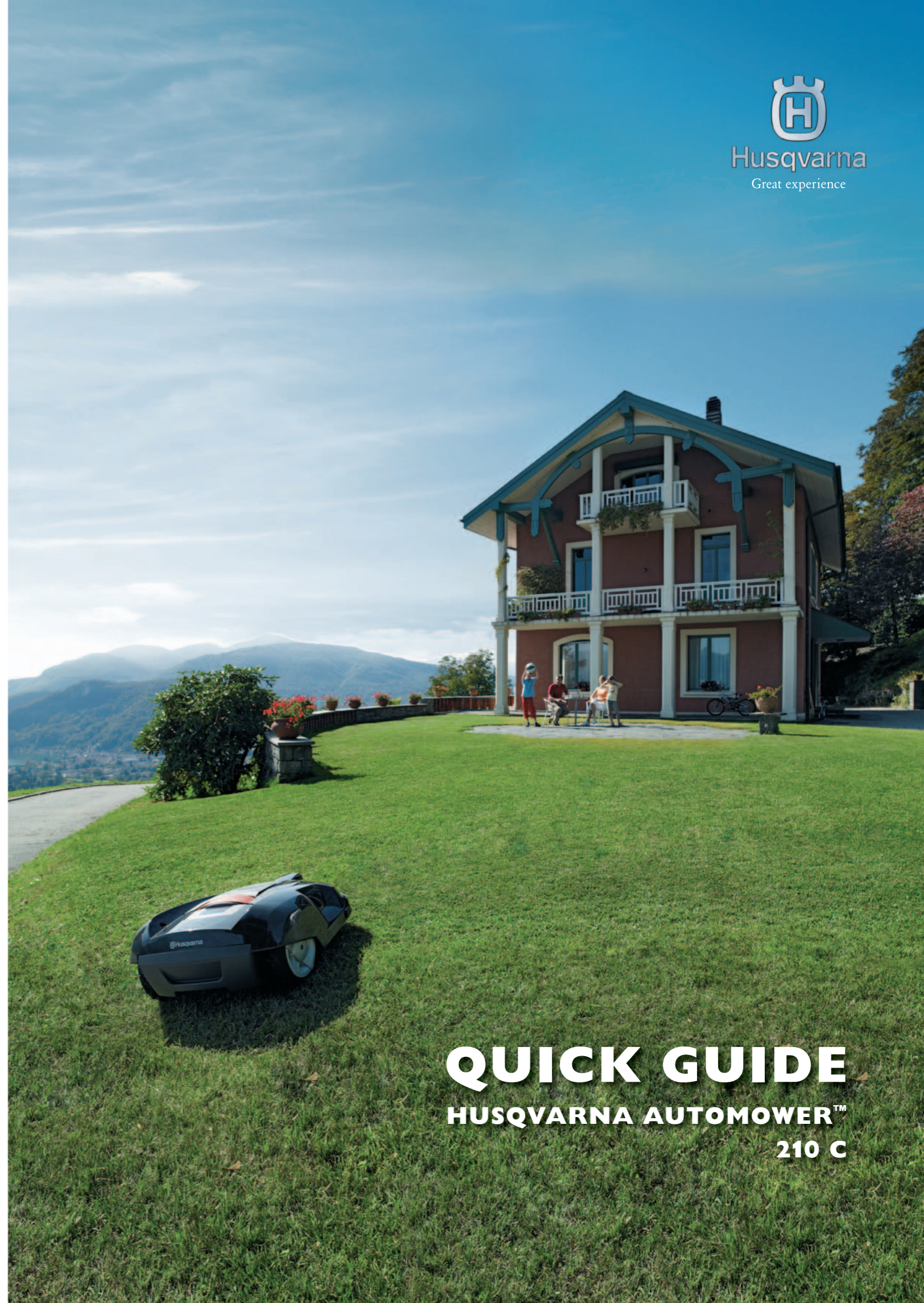
Automower is recommended for lawns up to 500 m² / 0.12 acre. The size of the working area the mower can handle depends on how much it is used. The larger the lawn the more occasions per week Automower can work.



AUTOMOWER is a trademark owned by Husqvarna AB. Copyright © 2006 HUSQVARNA. All rights reserved.

www.automower.com

115 03 17-26



QUICK GUIDE

HUSQVARNA AUTOMOWER™

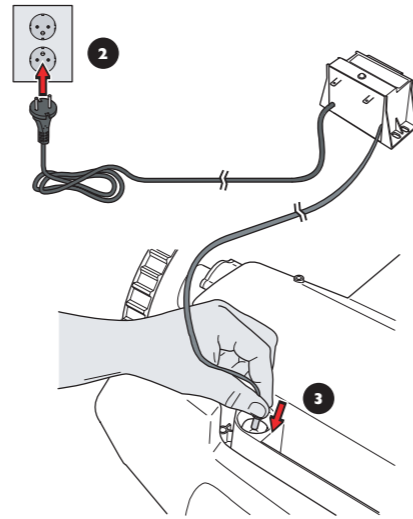
210 C

GETTING STARTED WITH HUSQVARNA AUTOMOWER™

1 PLACEMENT AND CONNECTION OF LOOP GENERATOR/CHARGER AND CHARGING OF BATTERY

See chapters 3.2 and 3.3 in the Operator's Manual.

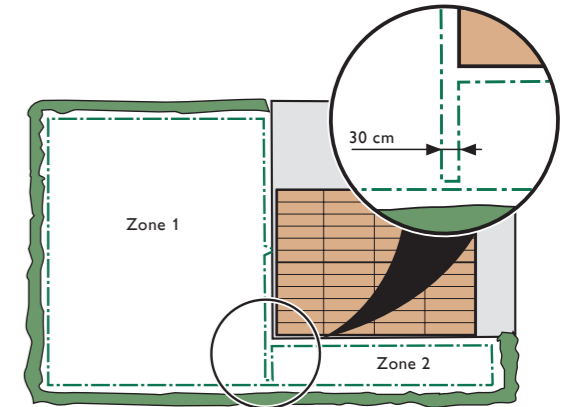
1. The loop generator/charger must be placed where it is well ventilated and is not exposed to direct sunlight.
2. Connect the loop generator/charger's power cord to a mains wall socket. The 120V transformer (USA) is for indoor use only.
3. Connect the charger cable from the loop generator/charger to the charger contact on the mower. The green indicator lamp Battery should now be lit with a steady light.



ZONE CLASSIFICATION

If the mowing results in the garden are uneven due to the shape of the garden, for example because of a long passage, you have the option of dividing up your garden into zones.

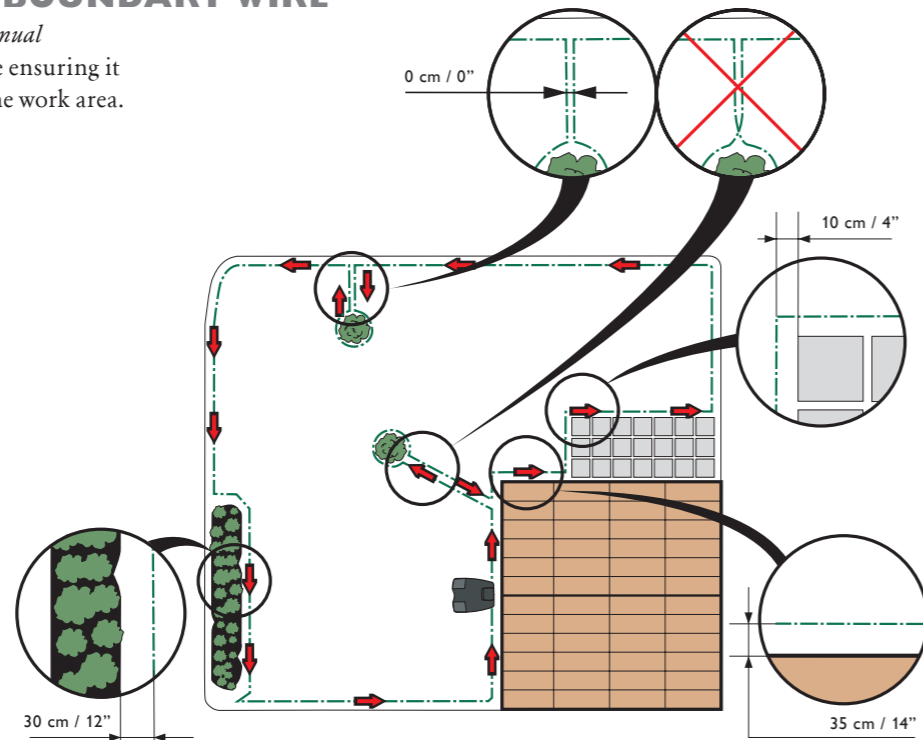
When the mower is placed in zone 1, it will not mow in zone 2 and vice versa. Move the mower between the zones to maintain even mowing results.



2 PLACING THE BOUNDARY WIRE

See 3.4 in the Operator's Manual

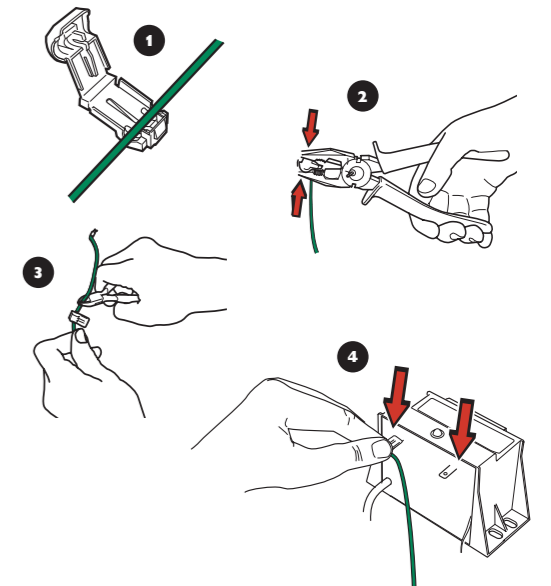
1. Run the boundary wire ensuring it forms a loop around the work area.



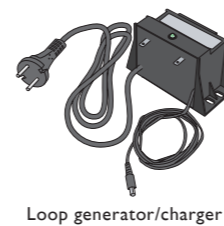
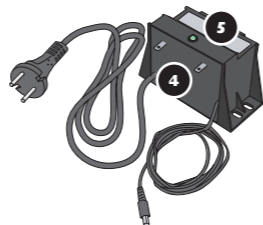
3 CONNECTING THE BOUNDARY WIRE

See chapter 3.5 in the Operator's Manual

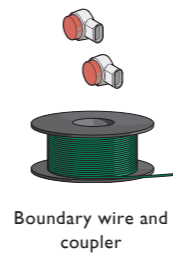
1. Open the connector and run the wire ends in the recesses on each connector.
2. Press the connector together using a pair of pliers.
3. Cut off any surplus boundary wire. Cut 1-2 cm / 0.5" above the connector.
4. Attach the connector to the contact pin on the loop generator/charger.



1. Catch button to open the cutting height adjustment cover
2. STOP button
3. Charger contact
4. Connection to boundary wire
5. LED for performance inspection of boundary wire
6. Indicator lamps
7. Keypad



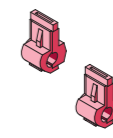
Loop generator/charger



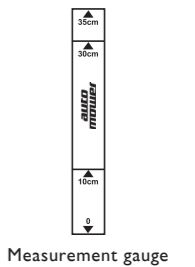
Boundary wire and coupler



Clinchers



Connector



Measurement gauge