

T560RS Pneumatic

Spare parts

Ersatzteile

Pièces détachées

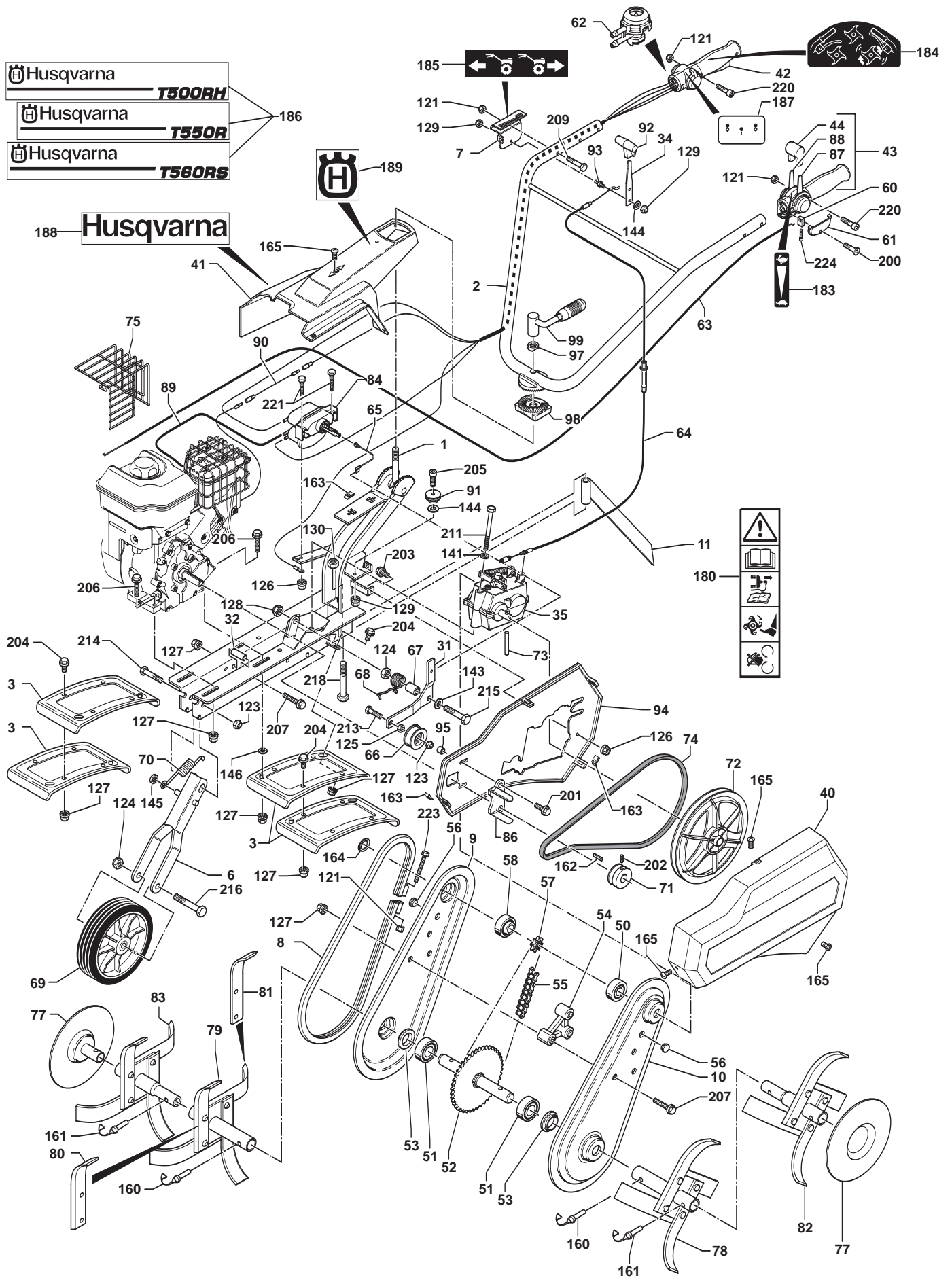
Reserve onderdelen

Repuestos

Reservdelar

REPAIR PARTS

TILLER - MODEL NO. T 500RH, T550R, T 560RS PRODUCT NO. 106 23 12-82



REPAIR PARTS

TILLER - MODEL NO. T 500RH, T550R, T 560RS PRODUCT NO. 106 23 12-82

Rep N°	Réf./Ref.	Description	Désignation	Qté / Qty		
				T500RH	T550R	T560RS
	519 65 30-81	Complete casing, flanged Orange	Carter complet à jonc orange			
1	531 00 85-81	Chassis Grey H	Châssis Gris H	1	1	1
2	531 00 82-41	Handlebars Grey H	Guidon Gris H	1	1	1
3	519 65 02-81	Protective cover Grey H	Tôle protection Gris H	6	6	6
6	519 65 34-60	Front wheel bracket	Supp. roue transport Noir	1	1	1
7	531 00 85-17	Gear lever cover, RHS	Tôle levier vitesse droite	1	1	1
8	519 65 30-43	Flange Orange	Jonc orange	1	1	1
9	519 65 30-41	Transmission housing, RHS	Joue carter eco droite	1	1	1
10	519 65 30-42	Transmission housing, LHS	Joue carter eco gauche	1	1	1
11	531 00 82-06	Key	Éperon	1	1	1
31	519 65 34-07	Clutch lever	Levier embrayage	1	1	1
32	519 65 34-24	Spacer	Entretoise Châssis	1	1	1
34	531 00 85-19	Gear lever	Manette de vitesse	1	1	1
35	519 65 30-92	Reversing gearbox	Réducteur Mar mécanique	1	1	1
40	519 65 34-23	Belt cowl Orange	Capot courroie orange	1	1	1
41	531 00 82-25	Handle cowl BS5,5hp/GC	Capot mancheron BS5,5hp/GC	1	1	1
42	531 00 82-43	Right handle - pneumatic and electrical controls (Orange)	Poignée droite cde pneum. + faisceau (Orange)	1	1	1
43	531 00 82-44	Left handle - gas control (Orange)	Poignée gauche cde de gaz (Orange)	1	1	1
44	531 00 82-45	Accelerator knob	Embout manette gaz	1	1	1
50	505 54 40-01	Ball-race	Roulement	1	1	1
51	519 65 30-53	Ball-race	Roulement	2	2	2
52	519 65 30-07	Blade shaft	Arbre de travail	1	1	1
53	531 00 85-76	Joint	joint de carter	2	2	2
54	519 65 30-06	Spacer	Entretoise plastique	1	1	1
55	519 65 30-09	Chain	Chaîne	1	1	1
56	519 65 33-91	Grease cap	Bouchon	2	2	2
57	519 65 30-57	Cogwheel	Pignon 8 dts	1	1	1
58	531 00 85-46	Shouldered Ball-race	Roulement épaulé	1	1	1
60	531 00 82-46	Gas lever sleeve stop	Arrêt de gaine manette de gaz	1	1	1
61	531 00 82-47	Gas lever access panel	Trappe d'accès manette de gaz	1	1	1
62	531 00 82-48	Clutch handle microvalve	Microvanne poignée embrayage	1	1	1
63	531 00 85-83	Throttle cable (B.S 5,5hp)	Câble gaz (B.S 5,5hp)	1		
	531 00 85-84	Throttle cable (GC 135-160)	Câble gaz (GC 135-160)		1	
	531 00 85-85	Throttle cable (Robin EX 13-17)	Câble gaz (Robin EX 13-17)			1
64	519 65 30-55	Reverse gear cable	Câble inversion vitesse	1	1	1
65	519 65 34-09	Clutch cable	Câble embrayage	1	1	1
66	519 65 34-57	Runner	Galet embrayage	1	1	1
67	519 65 34-51	Spacer	Entretoise levier embrayage	1	1	1
68	519 65 30-90	Spring	Ressort embrayage	1	1	1
69	519 65 30-00	Front wheel	Roue avant	1	1	1
70	519 65 02-60	Spring	Ressort roue transport	1	1	1
71	531 00 82-29	Motor pulley Forward/Reverse gear (Shaft Ø19,05)	Poulie moteur Mav-Marr arbre Ø19,05	1	1	1
72	519 65 30-60	Transmission pulley	Poulie transmission	1	1	1
73	519 65 30-67	Pulley shaft	Axe fixation poulie	1	1	1
74	519 65 30-58	Forward drive belt	Courroie Mav-Marr	1	1	1
75	531 00 85-82	Exhaust grill (Robin EX 13-17)	Grille échappement (Robin EX 13-17)			1
77	519 65 33-62	Disk	Disque	2	2	2
78	531 00 85-20	Simple rotating blades 40x4 L	Étoile départ simple 40x4 G	1	1	1
79	531 00 85-21	Simple rotating blades 40x4 R	Étoile départ simple 40x4 D	1	1	1
80	531 00 85-47	Blade, LH	Couteau gauche			
81	531 00 85-48	Blade, RH	Couteau droit			
82	531 00 85-22	Additional blade assembly, LH	Étoile addit. dém. gauche			
83	531 00 85-23	Additional blade assembly, RH	Étoile addit. dém. droite			
84	531 00 82-49	Control cylinder	Vérin double cuve	1	1	1
86	531 00 85-77	Drive-belt guide Forward/Reverse gear	Guide courroie Mav-Marr	1	1	1
87	531 00 82-57	Left half-accelerator level	Demi manette gaz gauche	1	1	1
88	531 00 82-58	Right half-accelerator level	Demi manette gaz droite	1	1	1
89	519 65 34-16	Vacuum tube, motor GC	Tube connection moteur GC	1		
	531 00 82-50	Vacuum tube, motor BS5,5hp / EX 17	Tube connection moteur BS5,5hp / EX 17		1	1
90	531 00 82-33	Engine cut-of wire GC	Fil arrêt moteur GC	1		
91	519 65 30-52	Runner	Galet Câble embrayage	1	1	1
92	519 65 30-91	End tube	Embout manette vitesse	1	1	1
93	531 00 85-18	Lever spindle	Axe levier 2 vitesses	1	1	1
94	531 00 82-35	Inner casing shell	Cache intérieur	1	1	1
95	531 00 82-16	Spacer BS5,5	Entretoise cache intérieur BS5,5		2	
	531 00 82-36	Spacer GC - EX 13/17	Entr. cache int. GC - EX 13/17	2		2
97	519 65 34-14	Spacer	Entretoise poignée de serrage	1	1	1
98	519 65 34-15	Filler piece	Pièce intermédiaire	1	1	1
99	531 00 82-37	Handlebar tightening lever	Poignée de serrage	1	1	1
121	732 26 16-01	Blocking nut M6 Z	Écrou frein M6 Z			
123	519 65 34-58	Blocking nut M10 Z	Écrou frein M10 Z			
124	725 25 50-51	Blocking nut M12 Z	Écrou frein M12 Z			
125	519 65 34-56	Nut HM10 Z	Écrou H M10 Z			
126	519 65 34-32	Nut HM6 Z, notched shoulder	Écrou H M6 Z embase crantée			
127	519 65 34-30	Nut HM8 Z, notched shoulder	Écrou H M8 Z embase crantée			
128	531 00 82-21	Nut HM12 Z, notched shoulder	Écrou H M12 Z embase crantée			
129	519 65 34-11	Nut BDR M6 Z	Écrou BDR M6			
130	531 00 85-78	Blocking nut M14 Z	Écrou frein M14 Z			
141	519 65 34-50	Washer 8 Z	Rondelle 8 Z			
143	519 65 34-53	Washer 12x27x2,5 Z	Rondelle 12x27x2,5			
144	519 65 34-49	Washer 6x14x1	Rondelle 6x14x1			
145	519 65 34-62	Starlock washer 10	Rondelle starlock 10			
146	519 65 30-97	Washer 9x20x3 Z	Rondelle 9x20x3 Z			

REPAIR PARTS

TILLER - MODEL NO. T 500RH, T550R, T 560RS PRODUCT NO. 106 23 12-82

Rep N°	Réf./Ref.	Description	Désignation	Qté / Qty		
				T500RH	T550R	T560RS
160	531 00 94-10	Clip pin, 10mm diameter	Goupille clips Ø10			
161	531 00 94-11	Clip pin, 8mm diameter	Goupille clips Ø8			
162	519 65 30-21	Key (Shaft Ø19,05)	Clavette arbre Ø19,05			
163	519 65 34-25	Spire nuts 4,2	Clips 4,2			
164	519 65 34-66	Circlips	Circlips			
165	519 65 34-26	Cover bolt 4,2	Vis Tôle 4,2			
180	531 00 85-40	Safety label	Étiq. "Sécurité"			
183	531 00 82-51	Label: Accelerator lever	Étiquette de gaz			
184	519 65 30-85	Label: Clutch lever	Étiquette embrayage mécanique			
185	519 65 30-84	Label: Forward and reverse gears	Étiq. "inversion de vitesse "			
186	531 00 82-60	Label: Husqvarna T500RH	Étiq: Husqvarna T500RH	1		
	531 00 82-61	Label: Husqvarna T560RS	Étiq: Husqvarna T560RS			1
	531 00 85-14	Label: Husqvarna T550R	Étiq: Husqvarna T550R		1	
187	519 65 31-03	On/off label	Étiq. "Marche - Arrêt"			
188	531 00 82-62	Label: Husqvarna	Étiq: Husqvarna	1	1	1
189	531 00 82-63	Label: H	Étiq: H	1	1	1
200	531 00 82-52	Screw thermo 3,5x12	Vis thermo 3,5x12			
201	519 65 34-12	Screw 5/16 TH24 UNF lg 25, notched shoulder (B.S 5,5hp)	Vis 5/16 TH24 UNF lg 25 emb crantée (B.S 5,5hp)			
	531 00 85-86	Screw 5/16 TH24 UNF lg 32, notched shoulder (GC/EX)	Vis 5/16 TH24 UNF lg32 emb crantée (GC/EX)			
202	519 65 30-20	Screw St Hc M8x16 N	Vis St Hc M8x16 N			
203	519 65 34-35	Screw H M6x16 Z, notched shoulder	Vis H M6x16 Z embase crantée			
204	531 00 82-02	Screw H M8x16 Z, notched shoulder	Vis H M8x16 Z embase crantée			
205	531 00 82-53	Screw H M6x20 Z, notched shoulder	Vis H M6x20 Z embase crantée			
206	519 65 34-13	Screw H M8x40 Z, notched shoulder motor BS/GC	Vis H M8x40 Z embase crantée moteur BS/GC			
207	519 65 34-63	Screw H M8x50 Z, notched shoulder	Vis H M8x50 Z embase crantée			
209	519 65 34-37	Screw H M6x35 Z	Vis H M6x35 Z			
211	519 65 30-45	Screw H M8x110 Z	Vis H M8x110 Z			
213	519 65 34-55	Screw H M10x35 Z	Vis H M10x35 Z			
214	519 65 30-46	Screw H M10x55 Z	Vis H M10x55 Z			
215	519 65 34-54	Screw H M12x60 Z	Vis H M12x60 Z			
216	519 65 31-31	Screw H M12x80 Z	Vis H M12x80 Z			
218	531 00 82-20	Screw H M14x90 Z	Vis H M14x90 Z			
220	519 65 30-26	Screw CHc M6x35	Vis CHc M6x35			
221	531 00 82-55	Self-tapping screw H M6x40	Vis H M6x40 autotaraudeuse			
223	519 65 30-10	Screw CHc M6x50	Vis CHc M6x50			
224	531 00 82-56	Screw thermodur 4x12 torx	Vis thermodur 4x12 torx			