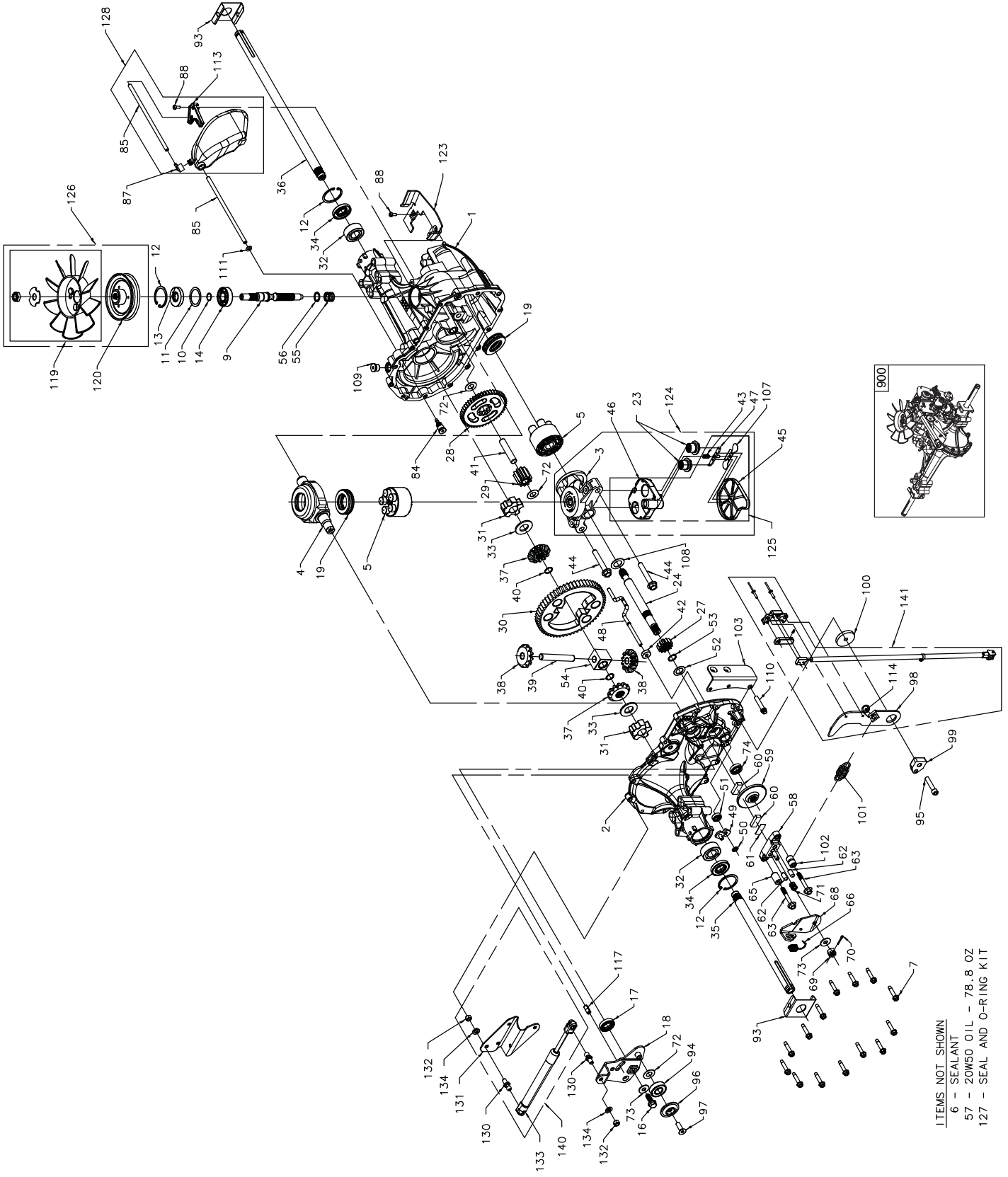


# Hydrogear 356-0510

**Spare parts**  
**Ersatzteile**  
**Pièces détachées**  
**Reserve onderdelen**  
**Repuestos**  
**Reservdelar**



ITEMS NOT SHOWN

- 6 - SEALANT
- 57 - 20W50 OIL - 78.8 OZ
- 127 - SEAL AND O-RING KIT

KEY NO.	PART NO.	DESCRIPTION	KEY NO.	PART NO.	DESCRIPTION
1	532 17 03-51	Kit, Main Housing Main Housing, Machined Bushing.865 X.985 X.790	88	532 17 83-34	Bolt, Self Tapping (BDR)
2	532 17 03-52	Kit, Side Housing Side Housing, Machined Bushing.865 X.985 X.790 Bushing.624 X.719 X.562	93	532 17 04-31	Spring Clip, Housing
3	532 17 03-53	Kit, Center Section Center Section, Machined Bushing.707 X.788 X.591	94	532 17 87-83	Bearing, Ball
4	532 17 03-54	Swashplate, Trunnion Machined	95	532 17 87-84	Screw,5/16-24x11/2SocketHeadCap(310-3000)
5	532 16 98-98	Kit, Cylinder Block (1000) Block - Cylinder Piston Spring, Compression Washer Thrust	96	532 17 87-86	Spacer, Locating
6	532 17 83-22	Sealant Tube	97	532 17 87-87	Screw (310-3000)
7	532 17 03-56	Hex Flange Screw 1/4-20 X 1.25	99	532 17 87-92	Puck, Adjusting
9	532 17 03-58	Shaft, Input	100	532 17 87-93	Washer, .325 OD xl.6 ldx.15 Tk
10	532 17 03-59	Retaining Ring	101	532 17 87-94	Spring, Extension
11	532 17 03-60	Spacer	102	532 17 87-95	Spacer, .56 ODx.26 ID X.87
12	532 16 98-70	Retaining Ring	103	532 17 87-96	Bracket, Torque
13	532 17 03-61	Seal, Lip.67 X 1.58 X.276	107	532 17 04-32	Deflector
14	532 17 31-58	Bearing, Ball 6203 (Bdr)	108	532 17 04-33	Washer, Motor Shaft.71 ldx 1.150dx .03 Thick
16	532 17 03-62	Hex Flange Head Screw 1/4-20 X 1.25	109	532 17 04-34	Plug, Straight Thread 9/16-18
17	532 17 03-63	Seal, Lip 18 X 32 X 7	110	532 16 11-59	Screw, Torx Head 5/16-18 (310-3000)
18	532 17 87-81	Arm, Control	111	532 17 04-35	O-ring .7 X .301 ID
19	532 17 31-59	Bearing, Thrust (10cc)	113	532 17 04-37	Bracket, Support Expansion Tank
23	532 17 04-20	Check Plug Assembly, .027 Washer	114	532 17 87-97	Spring Guide
24	532 17 03-66	Shaft Motor	117	532 17 87-99	Pin, Spring 5/16 X.75
27	532 17 03-67	Gear, Pinion, 13t	119	532 19 10-31	Kit, Fan - Washer - Nut Fan, 7 In Hex Lock Nut 1/2-20 (Nylon Insert) Washer, OR Slotted, .53 X 1.63 X.06
28	532 17 03-68	Gear 1 OT / 48t	120	532 17 04-40	Pulley
29	532 17 03-69	Gear, 1 OT Jackshaft	123	532 40 12-65	Belt Keeper
30	532 17 03-70	60T Bullgear	124	532 19 10-33	Center Section Filter Bypass Assembly Center Section Base Filter W/ Poppet Check Plug Assembly,.027 Washer Spring, Bypass Actuator, Bypass Deflector Bottom, Filter Bushing,.707 X.788 X.591
31	532 17 03-71	Sleeve Bearing.75 X 1.75 X.625	125	532 17 04-45	Kit, Filter Bottom, Filter Spring, Bypass Actuator, Bypass Deflector Base, Filter W/ Poppet
32	532 17 03-89	Sleeve Bearing (Outboard).75 X 1.575 X.625	126	532 17 04-46	Kit, Fan/pulley Hex Jam 1/20-20 (NylonInsert)Washer,ODSlotted,.53X1.63X.06 Fan, 7 In Pulley
33	532 14 29-91	Washer	127	532 17 04-47	Kit, Seal Lip Seal.67 X 1.58 X.276 Lip Seal 18 X 32 X 7 Lip Seal .706 X 1.584 X .25 Lip Seal.741 X.250 X.250 TC Oil Seal.625 X1.0x.25 O-ring.07x.301 ID
34	532 17 03-90	Lip Seal, Axle Shaft	128	532 40 12-66	Kit, Expansion Tank Tank, Expansion Assembly Cap, Barbed Vent Bolt, Self Tapping 10-32 X 1/2 Bracket, Support Expansion Tank Hose, Expansion Tank
35	532 17 03-91	Shaft, Axle (Keyed, R.H.)	130	532 17 88-02	Stud, Threaded Ball
36	532 17 03-92	Shaft, Axle (Keyed, L.H.)	131	532 17 88-03	Bracket, Cruise/Damper
37	532 40 12-60	Miter Gear (Splined)	132	532 17 88-04	Nut 5/16-18
38	532 40 12-61	Miter Gear	133	532 18 42-27	Damper
39	532 15 08-09	Differential Shaft (310-0750)	134	532 17 88-08	Washer, 5/16 Lock
40	532 17 03-93	Retaining Ring	140	532 19 10-30	Kit, Damper Stud, Threaded Ball Bracket, Cruise/Damper Hex Nut 5/16-18 NC Damper Washer, Helical Spring Lock 5/16, Regular
41	532 17 03-94	Pin, Jackshaft	141	532 40 40-30	Kit, Lt Rcs Arm, Return Spring Guide Switch, RCS Activator, RCS Switch Spring, RCS Switch Retainer, RCS Switch Rivet 5/32
42	532 17 03-95	Magnet, Ring	900	532 40 05-06	Transaxle
43	532 17 03-96	Spring, Bypass			
44	532 15 07-97	Bolt 3/8-24 X 2-1/2			
45	532 17 03-97	Filter			
46	532 17 03-98	Base, Filter			
47	532 17 03-99	Actuator, Bypass			
48	532 17 04-00	Rod, Bypass Actuator			
49	532 19 65-99	Arm, Bypass			
50	532 17 04-02	Retaining Ring.25 External			
51	532 17 04-03	Seal, Lip.741 X.25 X.25			
52	532 17 04-04	Washer, Flat 0.050" (210-1000)			
53	532 17 04-05	Retaining Ring			
54	532 17 04-06	Bearing, Center Block			
55	532 14 29-77	Spring, Helical Compression			
56	532 14 29-78	Washer, Block Thrust 20W-50 OIL			
57	532 14 29-79	Kit, Brake Yoke			
58	532 14 29-29	Kit, Brake Yoke			
59	532 17 04-08	Rotor, Brake			
60	532 14 28-83	Brake Puck			
61	532 14 28-82	Brake Puck Plate			
62	532 17 04-09	Pin, Brake Actuating			
63	532 17 04-10	HFHCS 1/4-20 X 2 W/patch, Special Flange			
65	532 17 04-11	Spacer, Brake Torsion Spring			
66	532 18 93-86	Spring, Brake Arm Bias			
68	532 40 40-26	Arm-brake, RH			
69	532 17 04-15	Nut, Castle 5/16-24			
70	532 17 04-16	Pin, Cotter 3/32x3/4			
71	532 17 04-17	Brake Spring			
72	532 17 04-18	Washer (310-0750)			
73	532 14 28-84	Washer, Flat			
74	532 17 04-19	Seal, Oil			
84	532 17 04-25	Fitting, 5/16 X Sae 5/32 Tube			
85	532 17 04-26	Hose, Expansion Tank			
87	532 40 12-64	Cap, Barbed Vent			

NOTE : All component dimensions given in U.S. inches  
1 inch = 25.4 mm