

Hydrogear 351-0510

Spare parts

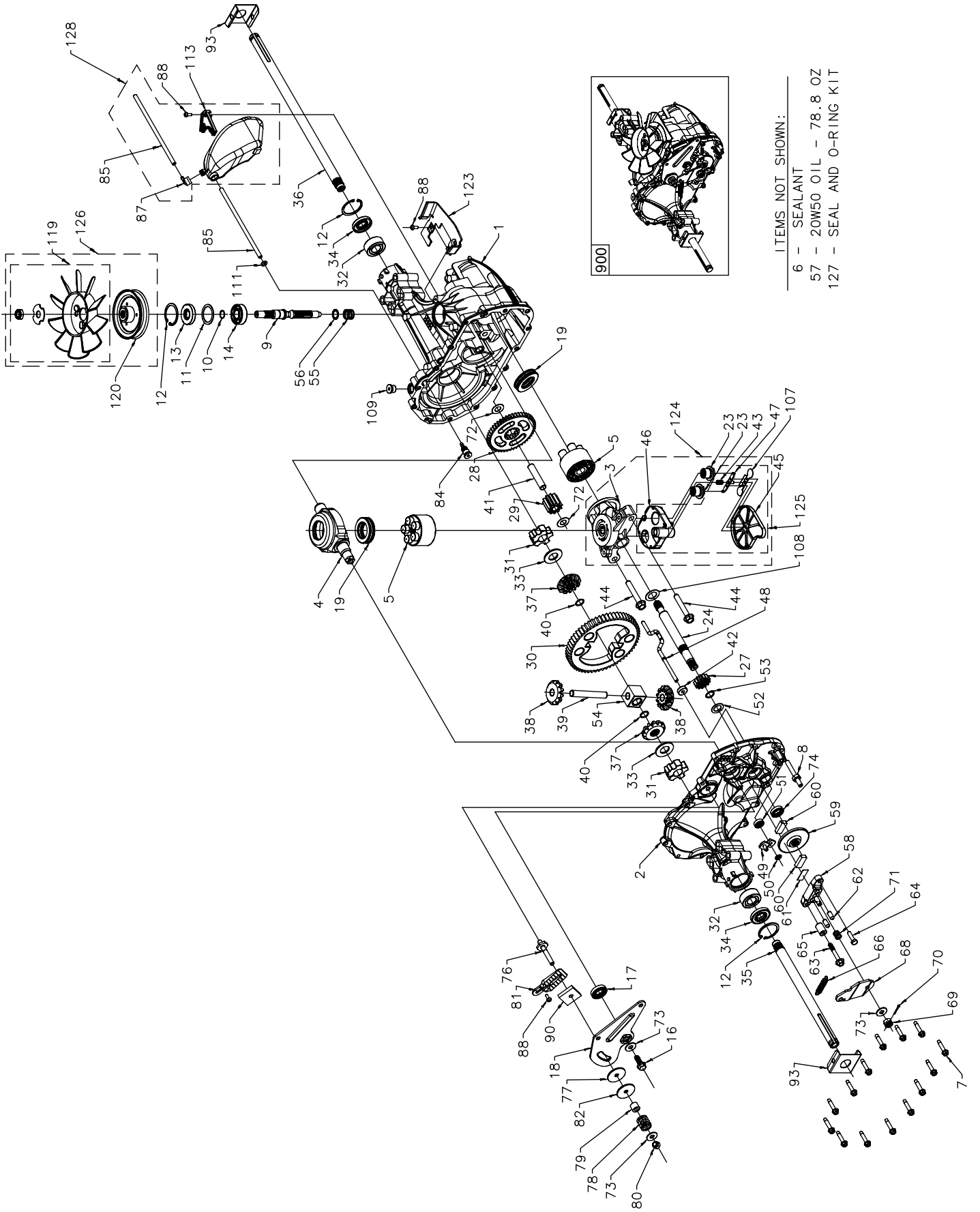
Ersatzteile

Pièces détachées

Reserve onderdelen

Repuestos

Reservdelar



ITEMS NOT SHOWN:

- 6 - SEALANT
- 57 - 20W50 OIL - 78.8 OZ
- 127 - SEAL AND O-RING KIT

KEY PART NO. NO.	DESCRIPTION	KEY PART NO. NO.	DESCRIPTION
1	532 17 03-51 Kit, Main Housing Main Housing, Machined Bushing .865 x .985 x .790	68	532 40 12-63 Arm-brake, RH
2	532 17 03-52 Kit, Side Housing Side Housing, Machined Bushing .865 x .985 x .790 Bushing .624 x .719 x .562	69	532 17 04-15 Nut, Castle 5/16-24
3	532 17 03-53 Kit, Center Section Center Section, Machined Bushing .707 x .788 x .591	70	532 17 04-16 Pin, Cotter 3/32x3/4
4	532 17 03-54 Swashplate, Trunnion Machined	71	532 17 04-17 Brake Spring
5	532 16 98-98 Kit, Cylinder Block (10CC) Block - Cylinder Piston Spring, Compression Washer Thrust	72	532 17 04-18 Washer (310-0750)
6	532 17 83-22 Sealant Tube	73	532 14 28-84 Washer, Flat
7	532 17 03-56 Hexflange Screw 1/4-20 x 1.25	74	532 17 04-19 Seal, Oil
8	532 17 03-57 Stud, 5/16-24 Hex Double End	75	532 17 04-20 Ass'y Check Plug
9	532 17 03-58 Shaft, Input	76	532 17 04-21 Bolt, Stud 5/16-24
10	532 17 03-59 Retaining Ring	77	532 17 04-22 Puck, Friction
11	532 17 03-60 Spacer	78	532 14 29-69 Spring
12	532 16 98-70 Retaining Ring	79	532 14 29-80 Spacer
13	532 17 03-61 Seal, Lip .67 x 1.58 x .276	80	532 15 07-78 Nut, Nylon Insert Hex Lock 5/16-24
14	532 17 31-58 Bearing, Ball 6203 (BDR)	81	532 17 04-23 Wedge, Friction
16	532 17 03-62 Hex Flange Head Screw 1/4-20 x 1.25	82	532 17 04-24 Clip, Washer
17	532 17 03-63 Seal, Lip 18 x 32 x 7	84	532 17 04-25 Fitting, 5/16 x Sae 5/32 Tube
18	532 17 03-64 Arm, Control	85	532 17 04-26 Hose, Expansion Tank
19	532 17 31-59 Bearing, Thrust (10cc)	87	532 40 12-64 Cap, Barbed Vent
23	532 17 03-65 Check Plug Assembly	88	532 17 83-34 Bolt, Self Tapping (BDR)
24	532 17 03-66 Shaft Motor	90	532 17 04-30 Puck, Inner Wedge
27	532 17 03-67 Gear, Pinion, 13T	93	532 17 04-31 Spring Clip, Housing
28	532 17 03-68 10T / 48T Gear	107	532 17 04-32 Deflector
29	532 17 03-69 Gear, 10T Jackshaft	108	532 17 04-33 Washer, Motor Shaft .71id x 1.15OD x .03 Thick
30	532 17 03-70 60T Bullgear	109	532 17 04-34 Plug, Straight Thread 9/16-18
31	532 17 03-71 Sleeve Bearing .75 x 1.75 x .625	111	532 17 04-35 O-ring .7 x .301 ID
32	532 17 03-89 Sleeve Bearing (Outboard) .75 x 1.575 x .625	113	532 17 04-37 Bracket, Support Expansion Tank
33	532 14 29-91 Washer	119	532 19 10-31 Kit, Fan - Washer - Nut Fan, 7 In
34	532 17 03-90 Lip Seal, Axle Shaft		Hex Lock Nut 1/2-20 (Nylon Insert)
35	532 17 03-91 Shaft, Axle (Keyed, R.H.)	120	532 17 04-40 Washer, Or Slotted, .53 x 1.63 x .06
36	532 17 03-92 Shaft, Axle (Keyed, L.H.)	123	532 40 12-65 Pulley
37	532 40 12-60 Miter Gear (Splined)	124	532 17 04-44 Kit, Center Section Filter Bypass Center Section Machining Base Filter W/ Poppet
38	532 40 12-61 Miter Gear		Check Plug Assembly, .027 Washer Check Plug Assembly, Washer Spring, Bypass Actuator, Bypass Deflector
39	532 15 08-09 Differential Shaft (310-0750)		Bottom, Filter Bushing, .707 x .788 x .591
40	532 17 03-93 Retaining Ring	125	532 17 04-45 Kit, Filter Bottom, Filter Spring, Bypass Actuator, Bypass Deflector
41	532 17 03-94 Pin, Jackshaft		Base, Filter W/ Poppet
42	532 17 03-95 Magnet, Ring	126	532 17 04-46 Kit, Fan/pulley Hex Jam 1/20-20 (Nylon Inser) Washer, OD Slotted, .53 x 1.63 x .06 Fan, 7 In
43	532 17 03-96 Spring, Bypass		Pulley
44	532 15 07-97 Bolt 3/8-24 x 2-1/2	127	532 17 04-47 Kit, Seal Lip Seal .67 x 1.58 x .276 Lip Seal 18 x 32 x 7 Lip Seal .706 x 1.584 x .25 Lip Seal .741 x .250 x .250 TC Oil Seal .625 x 1.0 x .25 O-ring .07 x .301 ID
45	532 17 03-97 Filter		Kit, Expansion Tank Tank, Expansion Assembly Cap, Barbed Vent Bolt, Self Tapping 10-32 x 1/2 Bracket, Support Expansion Tank Hose, Expansion Tank
46	532 17 03-98 Base, Filter		Transaxle Assembly-Complete
47	532 17 03-99 Actuator, Bypass		
48	532 17 04-00 Rod, Bypass Actuator		
49	532 19 65-99 Arm, Bypass		
50	532 17 04-02 Retaining Ring .25 External		
51	532 17 04-03 Seal, Lip .741 x .25 x .25		
52	532 17 04-04 Washer, Flat 0.050" (210-1000)		
53	532 17 04-05 Retaining Ring		
54	532 17 04-06 Bearing, Center Block		
55	532 14 29-77 Spring, Helical Compression		
56	532 14 29-78 Washer, Block Thrust	128	532 40 12-66 Kit, Expansion Tank Tank, Expansion Assembly Cap, Barbed Vent Bolt, Self Tapping 10-32 x 1/2 Bracket, Support Expansion Tank Hose, Expansion Tank
57	- - - 20vv-50 Oil		
58	532 14 29-29 Kit, Brake Yoke		
59	532 17 04-08 Rotor, Brake		
60	532 14 28-83 Brake Puck		
61	532 14 28-82 Brake Puck Plate		
62	532 17 04-09 Pin, Brake Actuating	900	532 19 79-42 Transaxle Assembly-Complete
63	532 17 04-10 Hfhcs 1/4-20 x 2 W/patch, Special Flange		
64	532 14 28-92 Bolt, Nylok		
65	532 17 04-11 Spacer, Brake Torsion Spring		
66	532 40 12-62 Spring, Brake Arm Bias		

NOTE: All component dimensions given in U.S. inches.
1 Inch = 25.4 mm