

# CT151

**Spare parts**

**Ersatzteile**

**Pièces détachées**

**Reserve onderdelen**

**Repuestos**

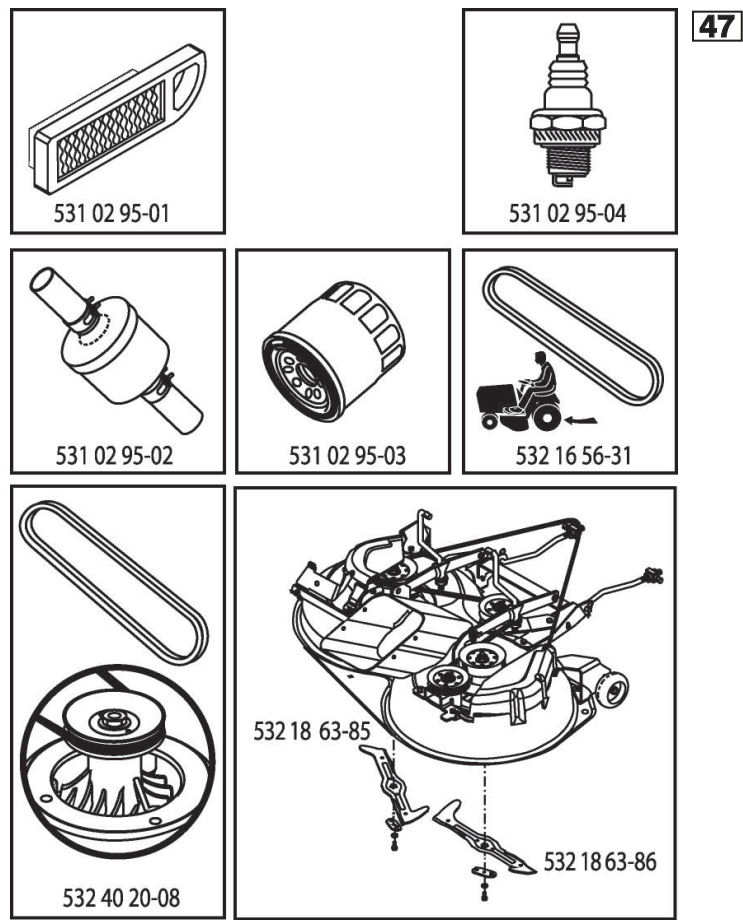
**Reservdelar**

# ILLUSTRATED PARTS LIST

**MFG. ID NO. 96061017908**

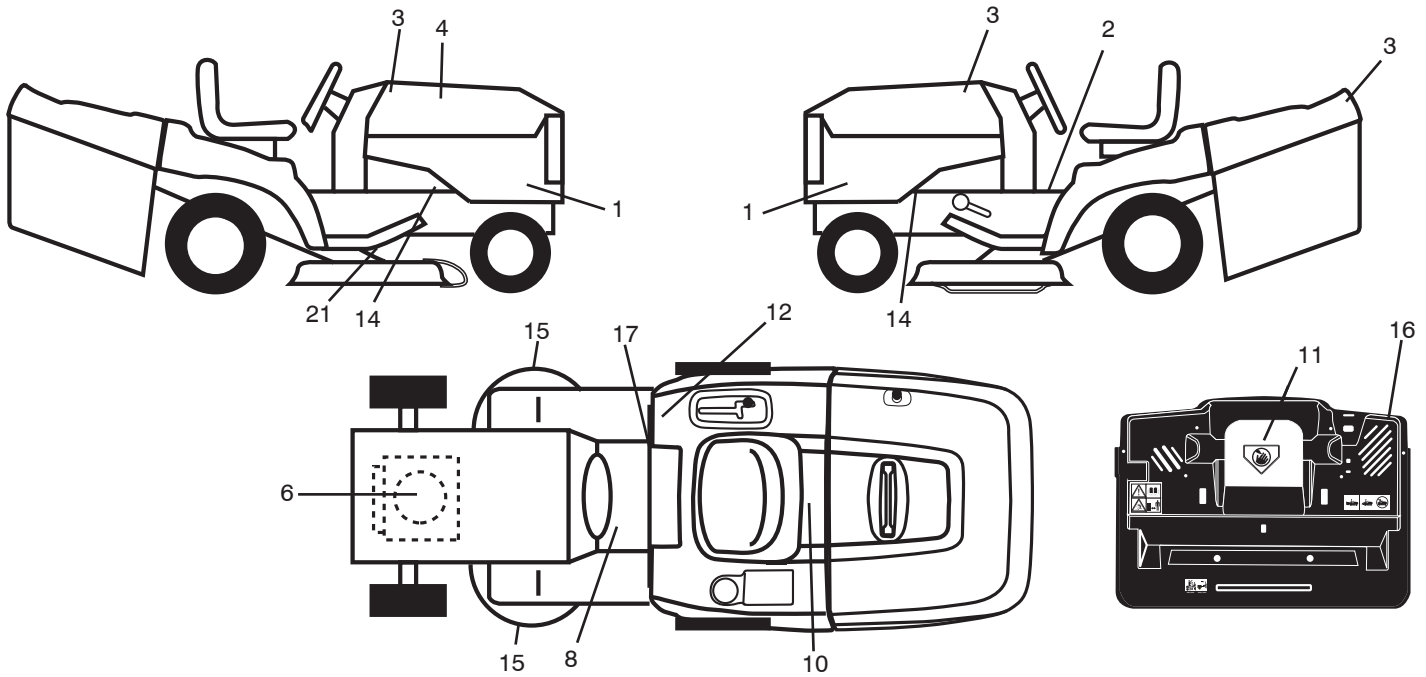
**CUSTOMER CATALOG NO. CT151**

**PRODUCT NO. 960 61 01-79**



413396

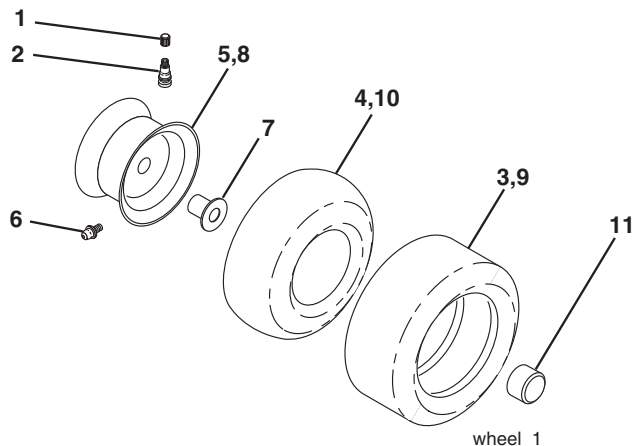
**TRACTOR - - MODEL NO. CT151 (96061017908), PRODUCT NO. 960 61 01-79  
DECALS 27**



| KEY NO. | PART NO.     | DESCRIPTION                    |
|---------|--------------|--------------------------------|
| 1       | 532 41 22-41 | Decal Side Panel               |
| 2       | 532 40 03-89 | Decal Warning Symbols CE       |
| 3       | 532 42 20-12 | Decal Hood                     |
| 4       | 532 41 33-96 | Decal Replacement              |
| 6       | 532 19 68-41 | Decal Warning Engine Symbols   |
| 8       | 532 15 97-37 | Decal Brake/Clutch Symbol      |
| 10      | 532 14 50-05 | Decal Bat Dan/Poi P/L Sym Wp'n |
| 11      | 532 18 21-66 | Decal Mower Cut Finger Symbol  |
| 12      | 532 18 04-32 | Decal Fender 100 DB/CE         |
| 14      | 532 15 97-36 | Decal Chassis Hot Muffler      |

| KEY NO. | PART NO.     | DESCRIPTION                |
|---------|--------------|----------------------------|
| 15      | 532 19 68-42 | Decal Warning Cut Finger   |
| 16      | 532 18 04-35 | Decal, Backplate CRD       |
| 17      | 532 14 08-37 | Decal Saddle Brake Parking |
| 21      | 532 16 62-86 | Decal Deck Sch 92 CRD      |
| --      | 532 13 83-11 | Decal Lift Handle          |
| --      | 532 18 19-16 | Pad Footrest LH            |
| --      | 532 18 19-17 | Pad Footrest RH            |
| --      | 532 41 19-43 | Manual Operator's (Euro)   |
| --      | 532 41 19-45 | Manual Operator's (Scan)   |
| --      | 532 41 19-44 | Manual Operator's (EBloc)  |
| --      | 532 41 19-46 | Manual Operator's (Baltic) |

**WHEELS & TIRES**

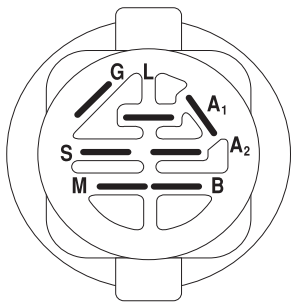
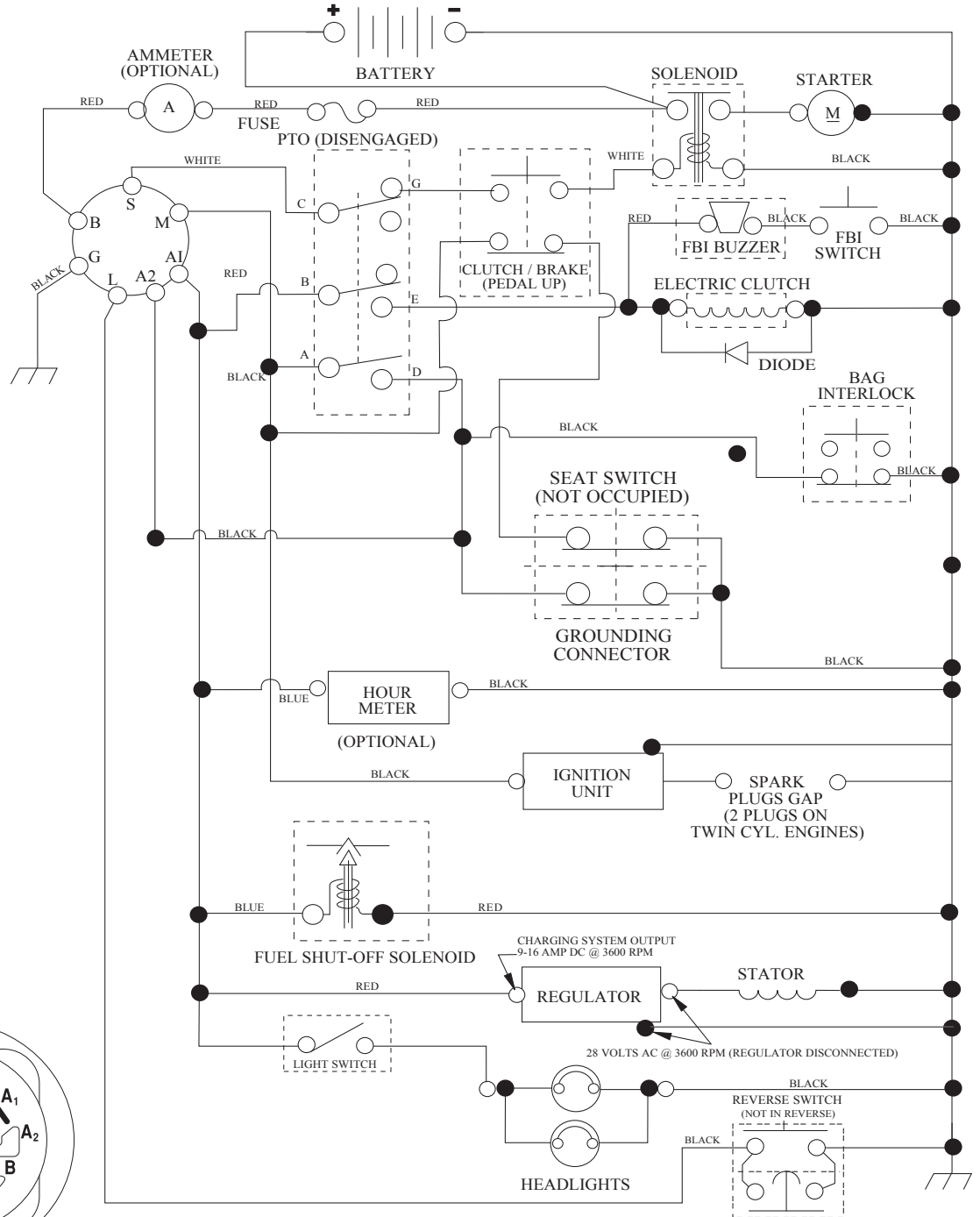


| KEY NO. | PART NO.     | DESCRIPTION                          |
|---------|--------------|--------------------------------------|
| 1       | 532 05 91-92 | Cap Valve Tire                       |
| 2       | 532 06 51-39 | Stem Valve                           |
| 3       | 532 10 62-22 | Tire F Ts 15 x 6 0 - 6               |
| 4       | 532 05 99-04 | Tube Inner Front #35060              |
| 5       | 532 13 83-36 | Rim Asm 6" Front                     |
| 6       | 532 12 49-57 | Fitting Grease                       |
| 7       | 532 12 49-59 | Bearing Flange                       |
| 8       | 532 13 83-37 | Rim Asm 8" Rear                      |
| 9       | 532 10 62-68 | Tire Rear 18 x 9.5-8 "Turf Saver"    |
| --      | 532 42 05-31 | Tire Rear 18 x 9.5-8 "Turf Saver LT" |
| 10      | 532 12 49-26 | Tube Rear 9 5 x 8                    |
| 11      | 532 17 50-39 | Cap Axle Blk 1 50 x 1 00             |
| --      | 532 14 43-34 | Sealant, Tire (10 oz. tube)          |

**NOTE:** All component dimensions given in U.S. inches.  
1 inch = 25.4 mm

# TRACTOR - - MODEL NO. CT151 (96061017908), PRODUCT NO. 960 61 01-79 SCHEMATIC **38**

SCH05



IGNITION SWITCH

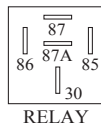
| POSITION     | CIRCUIT "MAKE" |
|--------------|----------------|
| OFF          | M+G+A1         |
| RUN/OVERRIDE | B+A1           |
| RUN          | B+A1 L+A2      |
| START        | B + S + A1     |

WIRING INSULATED CLIPS  
NOTE: IF WIRING INSULATED CLIPS WERE REMOVED FOR SERVICING OF UNIT, THEY SHOULD BE RE-INSTALLED TO PROPERLY SECURE YOUR WIRING.

03048

PTO SWITCH

| POSITION | CIRCUIT             |
|----------|---------------------|
| OFF      | C + G, B + H        |
| ON       | C + F, B + E, A + D |



RELAY

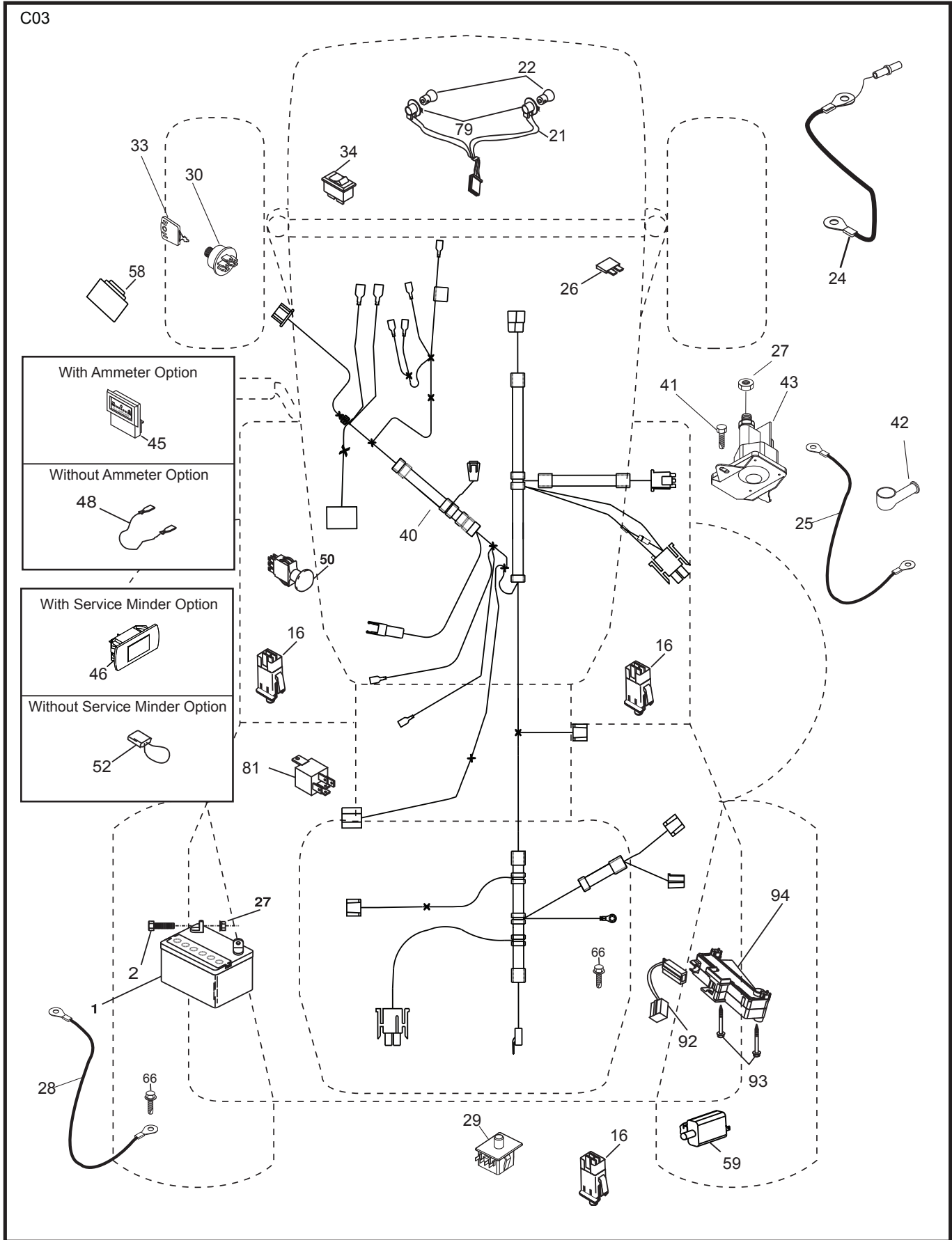


●  
NON-REMOVABLE CONNECTIONS

○  
REMOVABLE CONNECTIONS

**TRACTOR - - MODEL NO. CT151 (96061017908), PRODUCT NO. 960 61 01-79**  
**ELECTRICAL 32**

C03

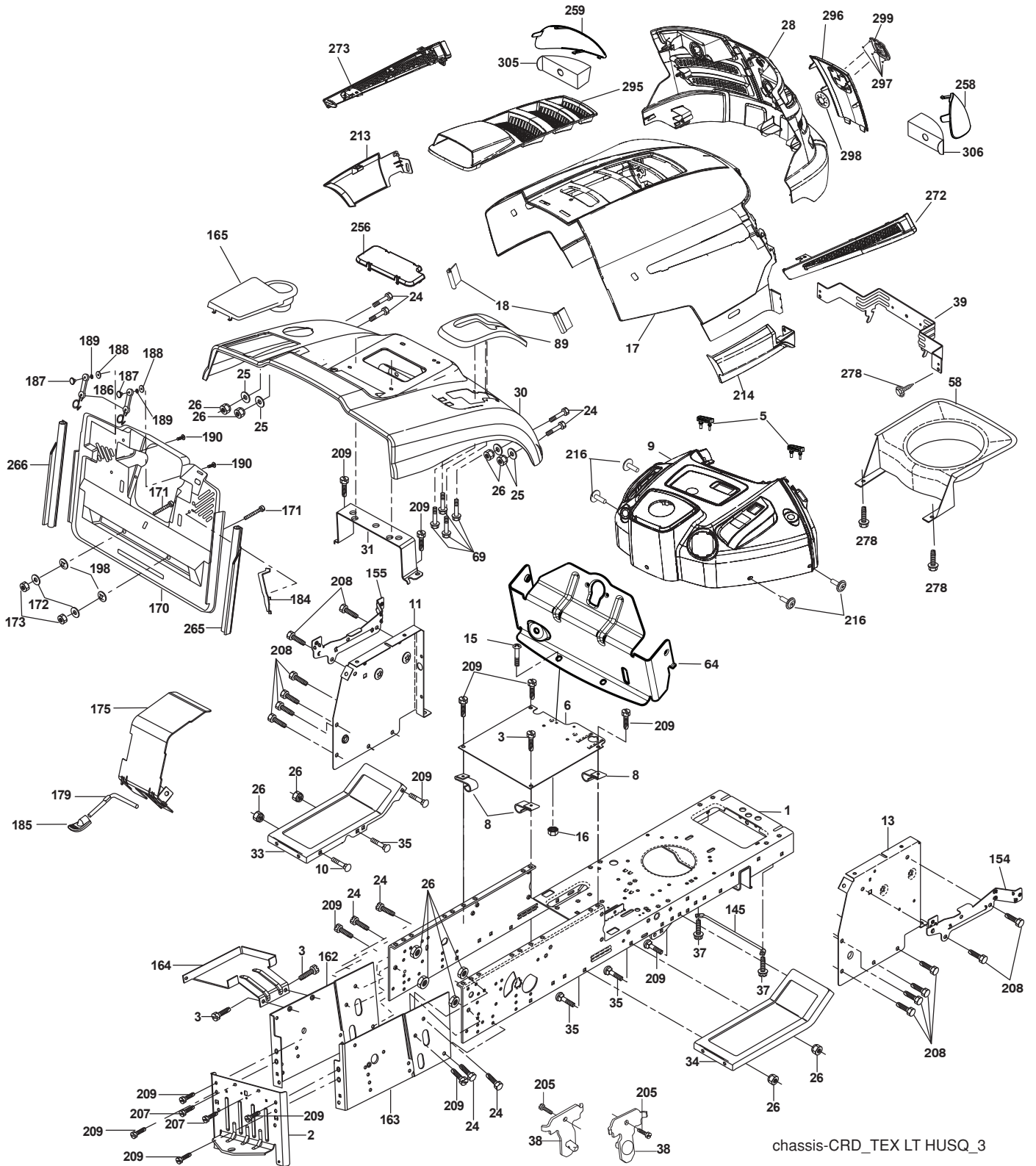


**TRACTOR - - MODEL NO. CT151 (96061017908), PRODUCT NO. 960 61 01-79  
ELECTRICAL 32**

| <b>KEY NO.</b> | <b>PART NO.</b> | <b>DESCRIPTION</b>                |
|----------------|-----------------|-----------------------------------|
| 1              | 532 16 34-65    | Battery                           |
| 2              | 874 76 04-12    | Bolt Hex Hd 1/4-20 unc x 3/4      |
| 16             | 532 17 61-38    | Switch Interlock                  |
| 21             | 532 40 02-52    | Harness Asm Light w/4152J         |
| 22             | 532 00 41-52    | Bulb Light #1156                  |
| 24             | 532 12 47-80    | Cable Starter 6 Ga. 11" Red       |
| 25             | 532 16 59-87    | Cable Battery Crd 56" Red         |
| 26             | 532 17 51-58    | Fuse                              |
| 27             | 873 51 04-00    | Nut Keps Hex 1/4-20 unc           |
| 28             | 532 12 77-25    | Cable Ground 6 Ga. 18" Black      |
| 29             | 532 19 27-49    | Switch Seat                       |
| 30             | 532 19 33-50    | Switch Ignition                   |
| 33             | 532 41 19-35    | Key/Chain                         |
| 34             | 532 11 07-12    | Switch Light                      |
| 40             | 532 19 74-34    | Harness Ign                       |
| 41             | 871 11 04-08    | Bolt Flk Fin Hex 1/4-20 unc x 1/2 |
| 42             | 532 13 15-63    | Cover Terminal Red                |
| 43             | 532 19 25-07    | Solenoid                          |
| 48             | 532 14 08-44    | Adapter Ammeter Rectangular       |
| 50             | 532 17 46-51    | Switch PTO                        |
| 52             | 532 14 19-40    | Protection Wire Loop              |
| 58             | 532 16 94-19    | Buzzer Crd                        |
| 59             | 532 18 03-79    | Switch FBI CRD                    |
| 66             | 817 49 06-08    | Screw Thdrol 3/8-16 x 1/2 Ty-Tt   |
| 79             | 532 17 52-52    | Socket Asm Bulb                   |
| 81             | 532 10 97-48    | Relay Asm                         |
| 92             | 532 19 66-15    | Harness Pigtail                   |
| 93             | 532 19 25-40    | Screw Plastite 10-14 x 2.0        |
| 94             | 532 19 18-34    | Module Reverse                    |

**NOTE:** All component dimensions given in U.S. inches.  
1 inch = 25.4 mm.

TRACTOR - - MODEL NO. CT151 (96061017908), PRODUCT NO. 960 61 01-79  
 CHASSIS AND ENCLOSURES **39**



chassis-CRD\_TEX LT HUSQ\_3

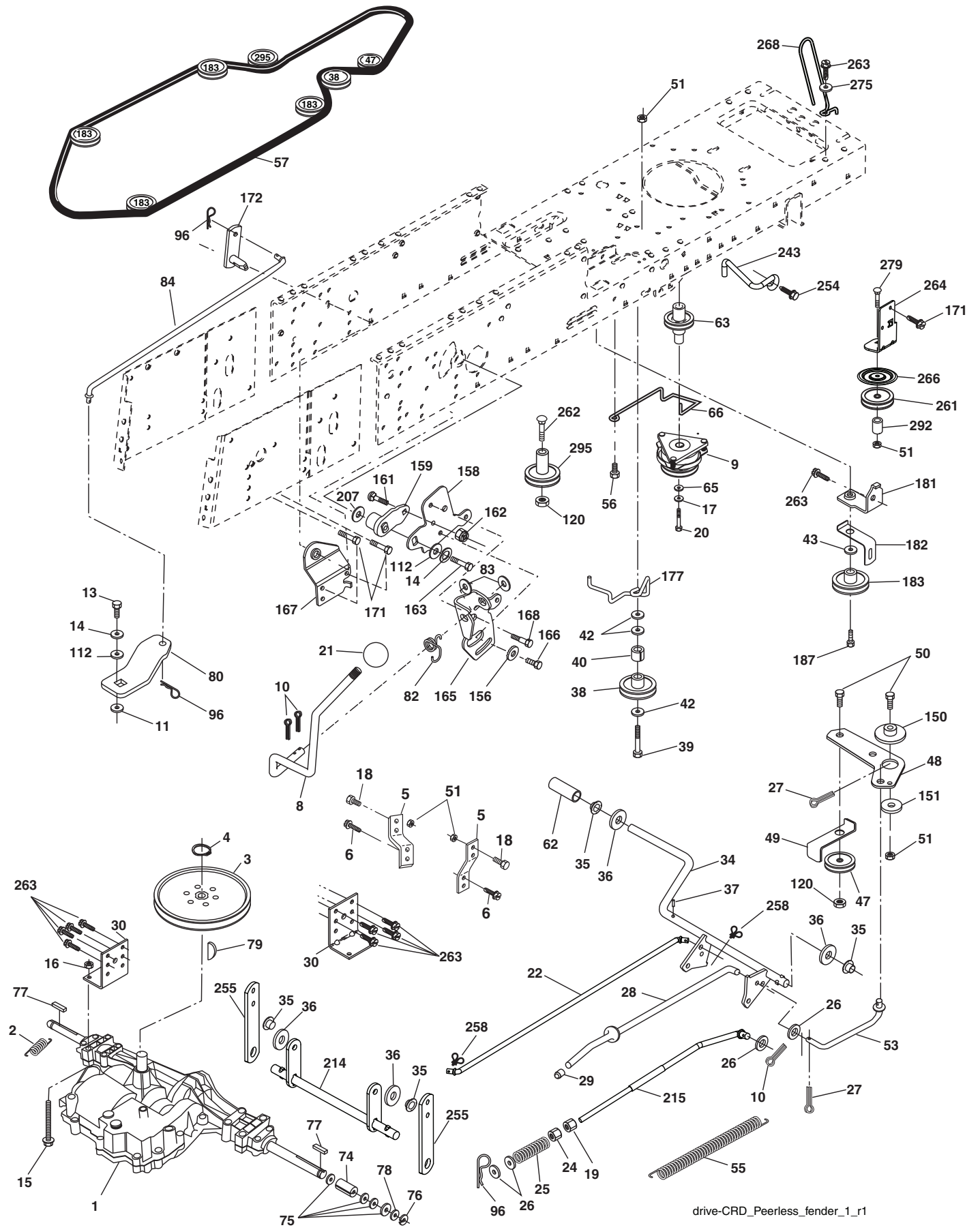
**TRACTOR - - MODEL NO. CT151 (96061017908), PRODUCT NO. 960 61 01-79  
CHASSIS AND ENCLOSURES 39**

| KEY<br>NO. | PART<br>NO.  | DESCRIPTION                                     | KEY<br>NO. | PART<br>NO.  | DESCRIPTION                      |
|------------|--------------|---|------------|--------------|----------------------------------|
| 1          | 532 17 46-20 | Chassis   | 173        | 873 51 06-00 | Nut, Keps Hex 3/8-16 unc         |
| 2          | 532 18 03-84 | Drawbar   | 175        | 532 18 82-03 | Door Trap                        |
| 3          | 817 06 06-12 | Screw 3/8-16 x 3/4                              | 179        | 532 18 82-02 | Rod Pivot FBI CRD                |
| 5          | 532 40 75-90 | Bumper Hood/Dash                                | 184        | 532 17 46-62 | Bracket Actuator Bagger CRD      |
| 6          | 532 18 44-19 | Saddle  | 185        | 532 18 11-01 | Knob Rod Brake Parking           |
| 8          | 532 12 64-71 | Clip Insulator 13/32 Mtg. Hole                  | 186        | 532 16 07-93 | Latch Asm Mulch/Bagger           |
| 9          | 532 40 94-67 | Dash  | 187        | 532 12 50-04 | Nut Weld                         |
| 10         | 872 14 06-08 | Bolt, Carriage 3/8-16 x 3/4                     | 188        | 819 06 12-16 | Washer #10                       |
| 11         | 532 17 49-96 | Panel, Dash, L.H.                               | 189        | 810 07 10-00 | Washer Lock #10                  |
| 13         | 532 17 21-06 | Panel, Dash R.H.                                | 190        | 871 08 10-10 | Screw Pan Hd Phillip 10-24 x 5/8 |
| 15         | 874 18 05-12 | Screw, Machine, Truss Head<br>5/16-18 unc x 3/4 | 198        | 532 16 89-37 | Nut, Push                        |
| 16         | 873 51 05-00 | Nut   | 205        | 817 49 06-08 | Screw Thdrol 3/8-16 x 1/2        |
| 17         | 532 41 10-73 | Hood  | 207        | 817 67 05-08 | Screw Thdrl. 5/16-18 x 1/2       |
| 18         | 532 40 47-42 | Bumper Hood                                     | 208        | 817 67 06-08 | Screw Thdrol 3/8-16 x 1/2        |
| 24         | 874 78 06-16 | Bolt  | 209        | 817 00 06-12 | Screw Hex Wsh Thdrol 3/8-16      |
| 25         | 819 13 13-12 | Washer 13/32 x 13/16 x 12 Ga.                   | 213        | 532 41 10-77 | Skirt Side LH                    |
| 26         | 873 80 06-00 | Nut   | 214        | 532 41 10-76 | Skirt Side RH                    |
| 28         | 532 40 66-67 | Grille /Lens Asm                                | 216        | 817 67 04-12 | Screw 1/4-20 x 3/4               |
| 30         | 532 19 73-76 | Fender  | 256        | 532 18 13-61 | Cover Fender Rack                |
| 31         | 532 16 51-56 | Bracket, Fender Support                         | 258        | 532 41 10-78 | Lens RH                          |
| 33         | 532 18 10-57 | Footrest, L.H.                                  | 259        | 532 41 10-79 | Lens LH                          |
| 34         | 532 18 10-58 | Footrest, R.H.                                  | 265        | 532 18 57-04 | Seal RH Side Bagger              |
| 35         | 872 11 06-06 | Bolt  | 266        | 532 18 57-03 | Seal LH Side Bagger              |
| 37         | 817 49 05-08 | Screw Thdrol 5/16-18 x 1/2 TYT                  | 272        | 532 41 10-74 | Vent Hood RH                     |
| 38         | 532 18 17-48 | Bracket Asm Pivot Mower Rear                    | 273        | 532 41 10-75 | Vent Hood LH                     |
| 39         | 532 40 78-07 | Bracket Pivot                                   | 278        | 532 41 63-58 | Screw 10 x .750 BOS Thread       |
| 58         | 532 40 75-37 | Duct Air Engine                                 | 295        | 532 41 11-16 | Vent Top Hood                    |
| 64         | 532 40 81-27 | Dash Lower                                      | 296        | 532 41 11-19 | Trim                             |
| 69         | 532 14 24-32 | Screw HxWsh Hi-Lo                               | 297        | 532 19 91-45 | Clip Retainer Tinner             |
| 89         | 532 19 74-07 | Console CRD 6 Sp. 418                           | 298        | 532 11 04-52 | Nut Push                         |
| 145        | 532 40 91-67 | Rod Pivot Chassis/Hood                          | 299        | 532 40 50-12 | Logo                             |
| 154        | 532 40 81-22 | Bracket Dash RH                                 | 305        | 532 40 66-65 | Insert Reflective LH             |
| 155        | 532 40 81-23 | Bracket Dash LH                                 | 306        | 532 41 65-01 | Insert Reflective RH             |
| 162        | 532 18 03-82 | Bracket Exten Chassis LH CRD                    | --         | 532 41 11-15 | Plug Dash                        |
| 163        | 532 18 03-83 | Bracket Exten Chassis RH CRD                    |            |              |                                  |
| 164        | 532 16 56-05 | Support Battery CRD                             |            |              |                                  |
| 165        | 532 18 11-00 | Cover Battery                                   |            |              |                                  |
| 170        | 532 19 94-88 | Backplate CRD                                   |            |              |                                  |
| 171        | 872 14 06-20 | Bolt Rdhd Sqnk 3/8-16 x 2-1/2 Gr. 5             |            |              |                                  |
| 172        | 819 13 20-16 | Washer 13/32 x 1-1/4 x 16 Ga.                   |            |              |                                  |

**NOTE:** All component dimensions given in U.S. inches.  
1 inch = 25.4 mm.



TRACTOR - - MODEL NO. CT151 (96061017908), PRODUCT NO. 960 61 01-79  
DRIVE **40**

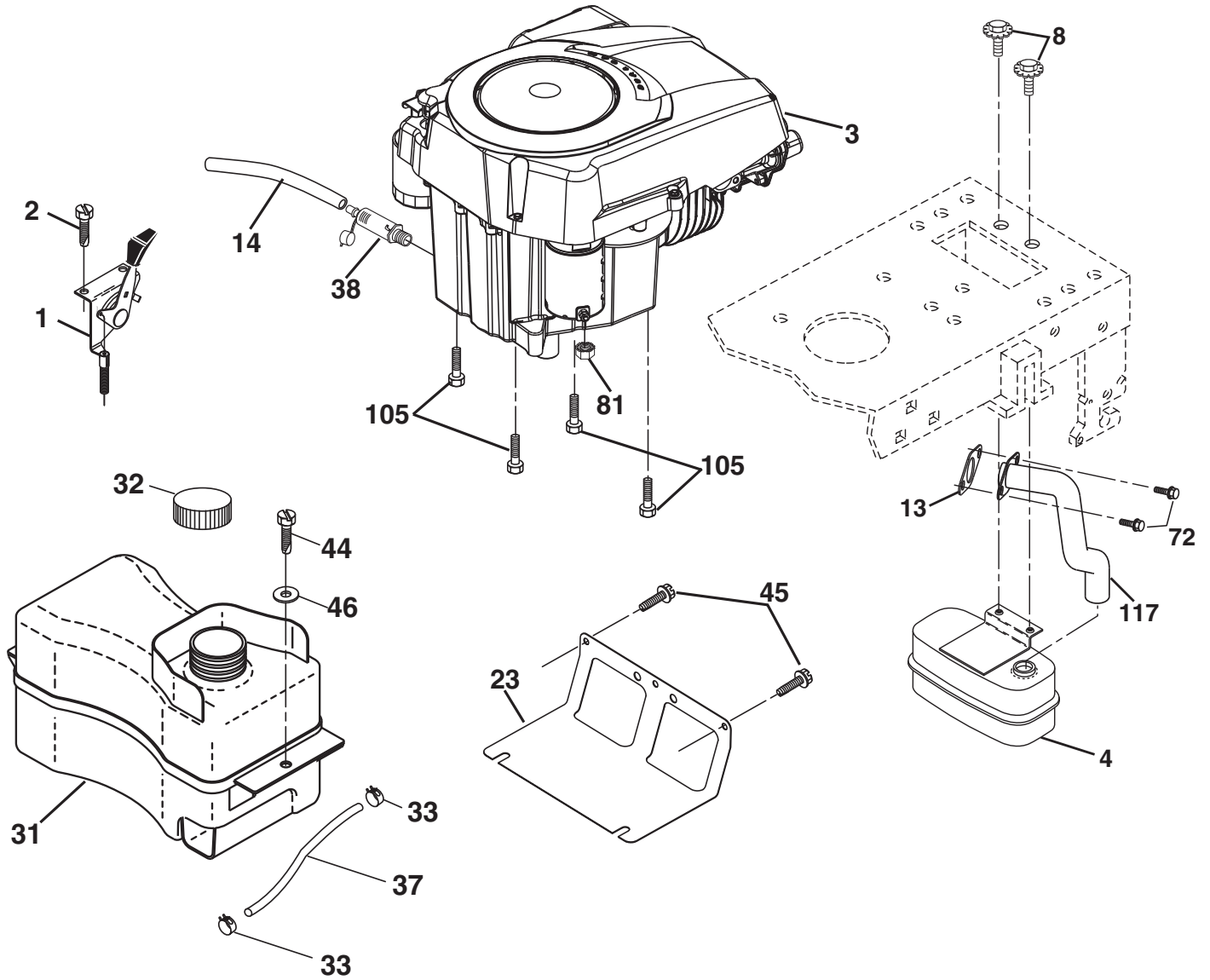


drive-CRD\_Peerless\_fender\_1\_r1

**TRACTOR - - MODEL NO. CT151 (96061017908), PRODUCT NO. 960 61 01-79  
DRIVE 40**

| KEY NO. | PART NO.     | DESCRIPTION                      | KEY NO. | PART NO.     | DESCRIPTION                       |
|---------|--------------|----------------------------------|---------|--------------|-----------------------------------|
| 1       | -----        | Transaxle Peerless 206-546       | 79      | 532 12 50-96 | Key Woodruff                      |
| 2       | 532 14 66-82 | Spring Brake Return              | 80      | 532 14 50-90 | Arm Shift PMST 20" Tires          |
| 3       | 532 16 59-99 | Pulley Transaxle                 | 82      | 532 16 57-11 | Spring, Torsion                   |
| 4       | 812 00 00-28 | Ring Retainer #5100-62           | 83      | 819 17 12-16 | Washer 17/32 x 3/4 x 16 Ga.       |
| 5       | 532 12 15-20 | Strap torque 30 degrees          | 84      | 532 16 56-21 | Link Shift CRD Pmst 18" Tires     |
| 6       | 817 06 05-12 | Screw 5/16-18 x 3/4              | 96      | 532 12 47-88 | Spring, Retainer 1"               |
| 8       | 532 19 27-06 | Rod Shift                        | 112     | 819 09 12-10 | Washer 9/32 x 3/4 x 10 Ga.        |
| 9       | 532 19 81-43 | Clutch Ogura                     | 120     | 873 90 06-00 | Nut Lock Flg. 3/8-16 unc          |
| 10      | 876 02 04-16 | Pin, Cotter 1/8 x 1              | 150     | 532 16 58-50 | Bushing, Bellcrank Grnd Dr        |
| 11      | 532 10 57-01 | Washer Plate Shf .3888 sq hole   | 151     | 819 13 32-10 | Washer 13/32 x 2 x 10 Ga.         |
| 13      | 874 55 04-12 | Bolt 1/4-28 unf Gr. 8 w/patch    | 156     | 532 16 60-02 | Washer Srrd 5/16 ID x 1.125       |
| 14      | 810 04 04-00 | Washer, Lock Hvy Helical         | 158     | 532 16 55-89 | Bracket Shift Mount               |
| 15      | 874 49 05-44 | Bolt Hex Flghd 5/16-18 Gr. 5     | 159     | 532 18 39-00 | Hub Shift                         |
| 16      | 873 80 05-00 | Nut, Lock Hex w/Ins 5/16-18 unc  | 161     | 872 14 04-06 | Bolt Rdhd Sqnk 1/4-20 x 3/4 Gr. 5 |
| 17      | 532 12 61-97 | Washer 1-1/2 ODX 15/32 ID x .250 | 162     | 873 68 04-00 | Nut Crownlock 1/4-20 unc          |
| 18      | 874 78 06-16 | Bolt Hex 3/8-16 unc x 1 Gr. 5    | 163     | 874 78 04-16 | Bolt Hex Fin 1/4-20 unc x 1 Gr. 5 |
| 19      | 873 80 06-00 | Nut, Lock Hex w/Wsh 3/8-16 unc   | 165     | 532 16 56-23 | Bracket Pivot Lever               |
| 20      | 532 17 39-37 | Bolt Hex 7/16-20 x 4 x GR5-1.5   | 166     | 817 49 05-10 | Screw 5/16-18 x 5/8               |
| 21      | 532 12 12-74 | Knob Duckhead                    | 167     | 532 16 55-88 | Bracket Support Shift CRD         |
| 22      | 532 17 56-07 | Rod, Brake CRD                   | 168     | 532 16 54-92 | Bolt Shoulder 5/16-18 x .561      |
| 24      | 873 35 06-00 | Nut                              | 171     | 817 49 06-08 | Screw Thdrol 3/8-16 x 1/2 Ty-Tt   |
| 25      | 532 10 68-88 | Spring, Rod, Brake               | 172     | 532 16 56-35 | Shaft Asm Shift Front CRD PMST    |
| 26      | 819 13 13-16 | Washer 13/32 x 13/16 x 16 Ga.    | 177     | 532 16 59-32 | Keeper Flat Idler 3.06" CRD       |
| 27      | 876 02 04-12 | Pin, Cotter 1/8 x 3/4            | 181     | 532 18 02-11 | Bracket Idler Ground Drive CRD    |
| 28      | 532 17 57-65 | Rod, Parking Brake               | 182     | 532 18 26-82 | Keeper Belt 2.5" Od V-Idler CRD   |
| 29      | 532 12 42-36 | Cap Brake Parking                | 183     | 532 19 95-32 | Pulley V-Idler                    |
| 30      | 532 17 49-73 | Bracket, Mfg. Transaxle          | 187     | 817 58 05-20 | Screw 5/16-18 x 1.25              |
| 34      | 532 17 55-78 | Shaft, Asm Pedal Foot            | 207     | 532 16 98-45 | Washer Nylon Rear                 |
| 35      | 532 12 01-83 | Bearing, Nylon                   | 214     | 532 17 56-09 | Shaft Asm Blade                   |
| 36      | 819 21 16-16 | Washer 21/32 x 1 x 16 Ga.        | 215     | 532 41 01-42 | Rod Brake                         |
| 37      | 532 12 49-63 | Pin, Roll 3/16 x 1"              | 243     | 532 19 07-36 | Bracket Anti-Rotation             |
| 38      | 532 16 59-36 | Pulley, Flat                     | 254     | 817 00 06-16 | Screw 3/8-16 x 1                  |
| 39      | 874 76 06-44 | Bolt Fin Hex 3/8-16 unc x 2-3/4  | 255     | 532 17 56-08 | Brace Shaft Brake Mtg.            |
| 40      | 532 12 49-65 | Spacer, Split 395 x 59 Bzp       | 258     | 532 17 80-62 | Clip Retainer                     |
| 42      | 819 13 13-12 | Washer 13/32 x 13/16 x 12 Ga.    | 261     | 532 13 14-94 | Pulley Idler                      |
| 43      | 819 11 10-12 | Washer 11/32 x 5/8 x 12 Ga.      | 263     | 817 00 06-12 | Screw 3/8-16 x 3/4                |
| 47      | 532 12 77-83 | Pulley, Idler, V Groove Plastic  | 262     | 872 11 06-22 | Bolt Rdhd 3/8-16 unc x 2-3/4 Gr.5 |
| 48      | 532 15 44-07 | Bellcrank Clutch Grnd Drv        | 264     | 532 19 76-07 | Bracket Idler Chass.              |
| 49      | 532 12 32-05 | Retainer, Belt Style Spring      | 266     | 532 18 20-61 | Shield Idler Mower                |
| 50      | 872 11 06-12 | Bolt 3/8-16 unc x 1-1/2          | 268     | 532 18 24-02 | Guard Muffler RH                  |
| 51      | 873 68 06-00 | Nut, Crownlock 3/8-16 unc        | 275     | 819 13 16-14 | Washer 13/32 x 1 x 14 Ga.         |
| 53      | 532 19 96-52 | Link, Clutch 7.66                | 279     | 872 11 06-16 | Bolt 3/8-16 unc x 2               |
| 55      | 532 10 57-09 | Spring, Return, Clutch           | 292     | 532 40 02-71 | Spacer                            |
| 56      | 817 06 06-20 | Screw 3/8-16 x 1-1/4             | 295     | 532 17 91-14 | Pulley Idler                      |
| 57      | 532 16 56-31 | V-Belt Kev PMST CRD              |         |              |                                   |
| 62      | 532 12 48-72 | Cover, Pedal                     |         |              |                                   |
| 63      | 532 18 03-97 | Pulley Engine                    |         |              |                                   |
| 65      | 810 04 07-00 | Washer                           |         |              |                                   |
| 66      | 532 15 47-78 | Keeper, Belt Engine F-Proof      |         |              |                                   |
| 74      | 532 13 70-57 | Spacer Axle                      |         |              |                                   |
| 75      | 532 12 17-49 | Washer 25/32 x 1-1/4 x 16 Ga.    |         |              |                                   |
| 76      | 812 00 00-01 | Ring, E                          |         |              |                                   |
| 77      | 532 12 35-83 | Key, Square                      |         |              |                                   |
| 78      | 532 12 17-48 | Washer 25/32 x 1-5/8 x 16 Ga.    |         |              |                                   |

**NOTE:** All component dimensions given in U.S. inches  
1 inch = 25.4 mm



29

**OPTIONAL EQUIPMENT**  
**Spark Arrester**

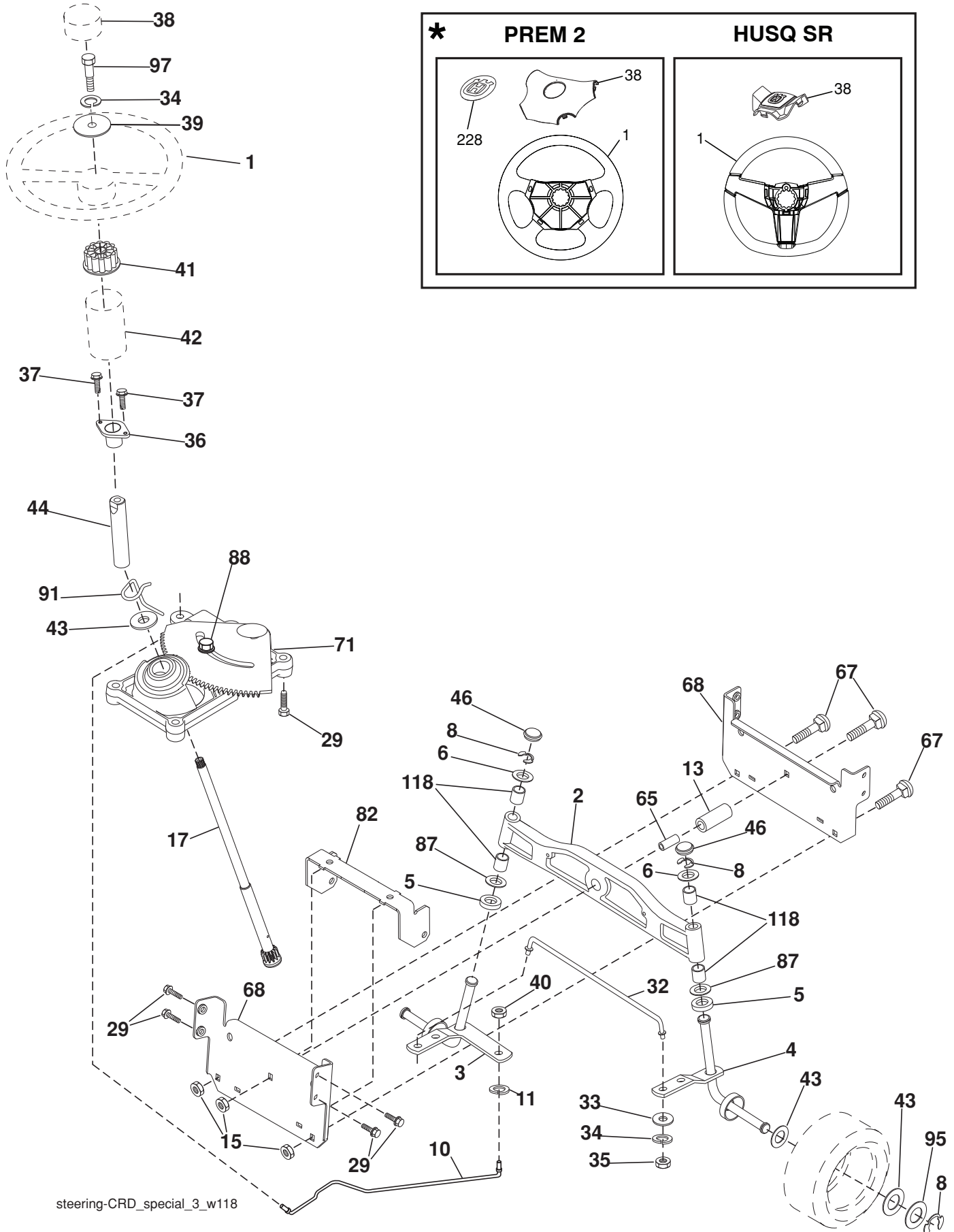
engine-CRD\_Kohl\_1

**TRACTOR - - MODEL NO. CT151 (96061017908), PRODUCT NO. 960 61 01-79  
ENGINE 24**

| <b>KEY NO.</b> | <b>PART NO.</b>     | <b>DESCRIPTION</b>               |
|----------------|---------------------|----------------------------------|
| 1              | 532 18 38-97        | Control Throt /Ch Flag           |
| 2              | <b>532 41 63-58</b> | Screw 10 x .750                  |
| 3              | -----               | Engine Kohler SV470              |
| 4              | 532 18 86-55        | Muffler Exhaust                  |
| 8              | 532 17 18-77        | Bolt 5/16-18 x 3/4               |
| 13             | 532 18 59-09        | Gasket                           |
| 14             | 532 14 84-56        | Tube Drain Oil Easy              |
| 23             | 532 16 98-37        | Shield Browning/Debris Guard     |
| 29             | 532 13 71-80        | Arrestor Spark                   |
| 31             | 532 40 75-45        | Tank Fuel                        |
| 32             | 532 19 77-25        | Cap Asm Fuel Top                 |
| 33             | 532 12 34-87        | Clamp Hose Blk                   |
| 37             | 532 13 70-40        | Line Fuel 20"                    |
| 38             | 532 18 16-54        | Plug Drain Oil Easy              |
| 44             | 817 67 04-12        | Screw Hexwsh Thdrol 1/4-20 x 3/4 |
| 45             | 817 00 06-12        | Screw Hexwsh Thdr 3/8-16 x 3/4   |
| 46             | 819 09 14-16        | Washer 9/32 x 7/8 x 16ga         |
| 72             | 532 19 23-34        | Screw 5/16-18 x .75              |
| 81             | 873 51 04-00        | Nut Keps 1/4-20 unc              |
| 105            | 817 12 06-16        | Screw 3/8-16 x 1                 |
| 117            | 532 18 86-54        | Tube Exhaust                     |

**NOTE:** All component dimensions given in U.S. inches.  
1 inch = 25.4 mm

TRACTOR - - MODEL NO. CT151 (96061017908), PRODUCT NO. 960 61 01-79  
 STEERING ASSEMBLY **41**



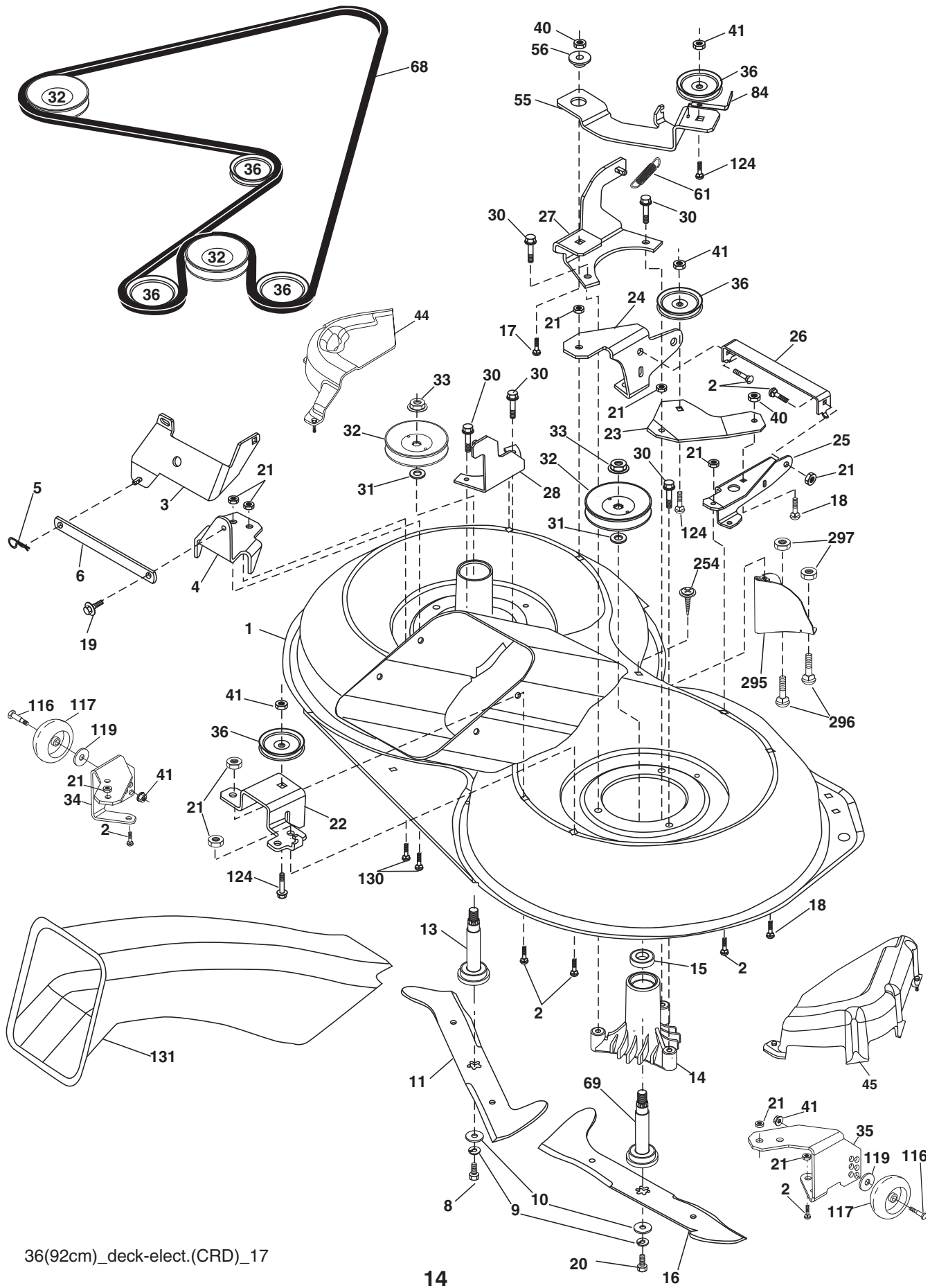
steering-CRD\_special\_3\_w118

**TRACTOR - - MODEL NO. CT151 (96061017908), PRODUCT NO. 960 61 01-79  
STEERING ASSEMBLY **41****

| <b>KEY NO.</b> | <b>PART NO.</b>     | <b>DESCRIPTION</b>                   |
|----------------|---------------------|--------------------------------------|
| 1              | <b>532 41 64-80</b> | Steering Wheel Husq SR               |
| --             | 532 41 64-80        | Steering Wheel Prem 2                |
| 2              | 532 19 35-42        | Axle Asm Cast Iron Lt                |
| 3              | 532 16 98-40        | Spindle Assembly, L.H.               |
| 4              | 532 16 98-39        | Spindle Assembly, R.H.               |
| 5              | 532 12 49-31        | Bearing, Race, Thrust, Hardened      |
| 6              | 532 12 17-48        | Washer 25/32 x 1-5/8 x 16 Ga.        |
| 8              | 812 00 00-29        | Ring, Klip                           |
| 10             | 532 17 51-21        | Link, Drag                           |
| 11             | 810 04 06-00        | Washer, Lock                         |
| 13             | 532 13 65-18        | Spacer Brg Axle Front                |
| 15             | 532 14 52-12        | Nut Hex Flange Lock                  |
| 17             | 532 19 07-53        | Shaft, Steering                      |
| 29             | 817 00 06-12        | Screw 3/8-16 x 3/4                   |
| 32             | 532 17 18-88        | Rod, Tie                             |
| 33             | 819 11 12-16        | Washer 11/32 x 3/4 x 16 Ga.          |
| 34             | 810 04 05-00        | Washer Lock Hvy Hlcl Spr 5/16        |
| 35             | 873 54 05-00        | Crownlock Nut 5/16-24 unf 3847       |
| 36             | 532 15 50-99        | Bushing, Steering                    |
| 37             | 532 15 29-27        | Screw TT #10-32 x 5 x 3/8 Flange     |
| 38             | 532 41 59-87        | Cap Wheel Steering Husq SR           |
| --             | 532 19 36-52        | Cap Wheel Steering Prem 2            |
| 39             | 819 11 38-12        | Washer 11/32 ID x 2- 3/8 OD x 12 Ga. |
| 40             | 873 54 06-00        | Nut Crownlock 3/8-24                 |
| 41             | 532 18 67-37        | Adaptor, Steering Wheel              |
| 42             | 532 41 11-39        | Boot, Steering Dash                  |
| 43             | 532 12 17-49        | Washer 25/32 x 1-1/4 x 16 Ga.        |
| 44             | 532 19 07-52        | Extension Steering Shaft             |
| 46             | 532 12 12-32        | Cap, Spindle                         |
| 65             | 532 41 47-36        | Spacer Brace Axle                    |
| 67             | 872 11 06-18        | Bolt Rdhd Sqnk 3/8-16 x 2-1/4        |
| 68             | 532 16 98-27        | Brace Axle                           |
| 71             | 532 17 51-46        | Steering Asm.                        |
| 82             | 532 19 99-78        | Bracket Susp Chassis Front           |
| 87             | 532 17 39-66        | Washer Flat .781 x 1 1/2 x .14       |
| 88             | 532 17 51-18        | Bolt Shoulder 7/16-20 unc            |
| 91             | 532 17 55-53        | Clip Steering                        |
| 95             | 532 18 89-67        | Washer                               |
| 97             | 874 78 05-64        | Bolt 5/16-18 unc x 4" L. Gr. 5       |
| 118            | 532 40 60-13        | Bushing                              |
| 228            | 532 40 44-84        | Decal Wheel Steering                 |

**NOTE:** All component dimensions given in U.S. inches.  
1 inch = 25.4 mm.

**TRACTOR - - MODEL NO. CT151 (96061017908), PRODUCT NO. 960 61 01-79  
MOWER DECK 44**



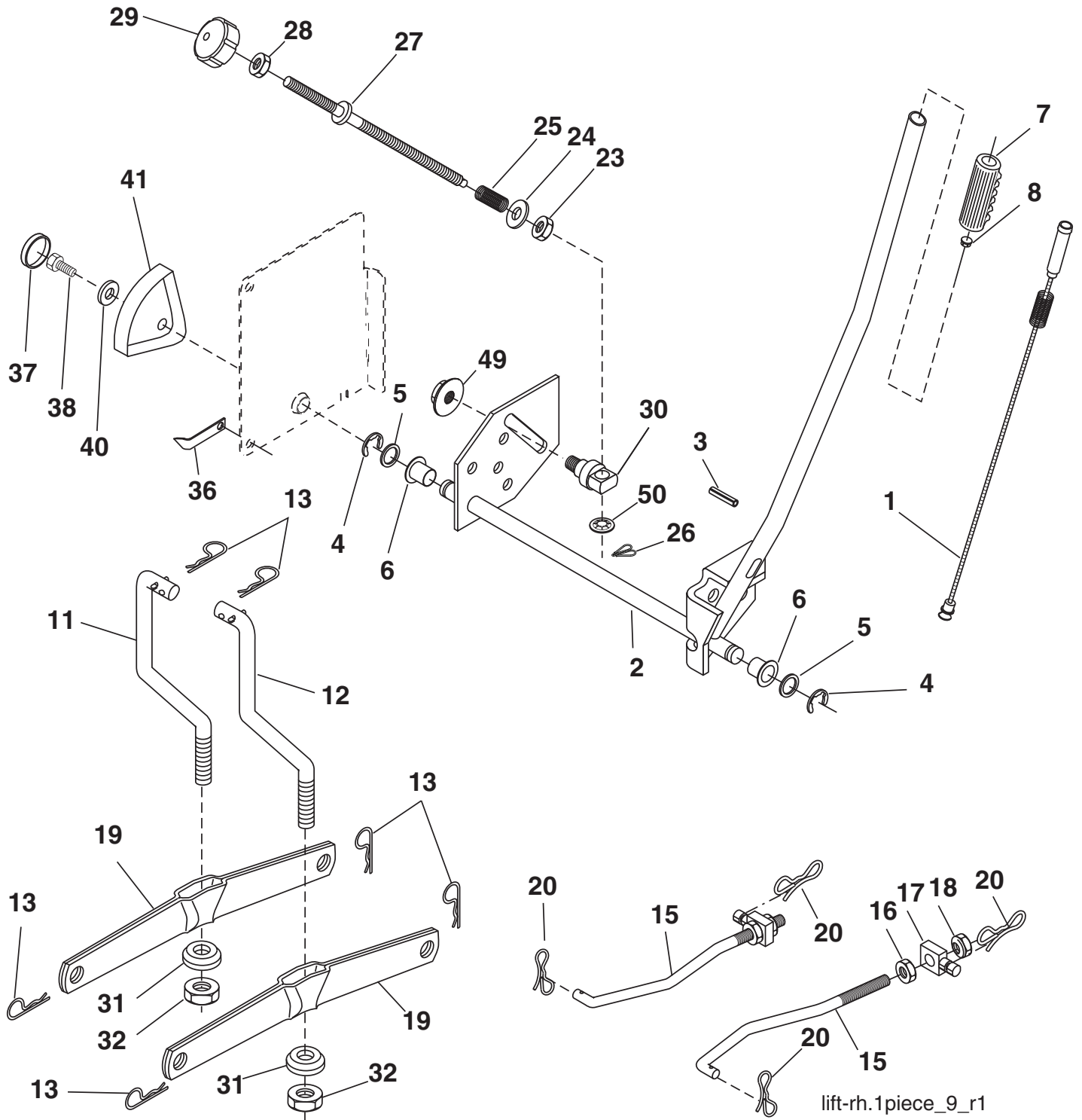
**TRACTOR - - MODEL NO. CT151 (96061017908), PRODUCT NO. 960 61 01-79  
MOWER DECK 44**

| KEY<br>NO. | PART<br>NO.  | DESCRIPTION                         | KEY<br>NO. | PART<br>NO.  | DESCRIPTION  |
|------------|--------------|-------------------------------------|------------|--------------|--|
| 1          | 532 40 01-08 | Housing Asm. Mower 92 CRD           | 41         | 873 90 06-00 | Nut Lock Flg. 3/8-16 unc   |
| 2          | 872 14 05-06 | Bolt Rdhd Sqnk 5/16-18 unc x 3/4    | 44         | 532 17 55-38 | Cover Mandrel LH 92 CRD  |
| 3          | 532 16 55-69 | Bracket Asm. S-Bar Chass 92 CRD     | 45         | 532 17 55-39 | Cover Mandrel RH 92 CRD  |
| 4          | 532 16 55-58 | Bracket Bar Sway Deck 92 CRD        | 46         | 532 13 77-29 | Screw Thd Roll 1/4-20 x 5/8  |
| 5          | 532 12 46-70 | Retainer Spring                     | 55         | 532 19 94-98 | Arm Idler 92 CRD   |
| 6          | 532 16 55-57 | Bar Sway 92 CRD                     | 56         | 532 16 57-23 | Spacer Retainer Mower  |
| 8          | 532 18 17-12 | Bolt 3/8-24 x 1.25 Gr. 8 Patched    | 61         | 532 19 94-86 | Spring Tension Belt  |
| 9          | 810 03 06-00 | Washer Lock Hvy 3/8 Unplated        | 68         | 532 40 20-08 | Hex-Belt 92 Mower  |
| 10         | 532 14 02-96 | Washer Hard                         | 69         | 532 16 54-82 | Shaft Asm w/Lwr Brg Rh Thd CRD   |
| 11         | 532 18 63-85 | Blade 3-1 LH 92 CRD                 | 84         | 532 15 60-85 | Keeper Belt Idler  |
| 13         | 532 13 76-45 | Shaft Asm. w/Lower Bearing          | 116        | 532 19 34-06 | Bolt Shoulder  |
| 14         | 532 12 87-74 | Housing Mandrel Vented (Machd)      | 117        | 532 17 48-73 | Wheel Gage   |
| 15         | 532 11 04-85 | Bearing Ball Mandrel                | 119        | 819 13 20-12 | Washer 13/32 x 1-1/4 x 12 GA.  |
| 16         | 532 18 63-86 | Blade 3-1 RH 92 CRD                 | 124        | 872 11 06-12 | Bolt Carr Sh 3/8-16 x 1-1/2 Gr. 5  |
| 17         | 872 14 06-10 | Bolt Carriage 3/8-16 x 1-1/4        | 130        | 872 11 05-06 | Bolt Rdhdsqnk 5/16-18 unc x 3/4  |
| 18         | 872 11 06-06 | Bolt Rdhd Sqnk 3/8-16 x 3/4         | 131        | 532 16 56-61 | Chute Bagger CRD 92cm  |
| 19         | 532 13 28-27 | Bolt Shoulder 5/16-18 Thd Form      | 254        | 817 00 06-16 | Screw 3/8-16 x 1   |
| 20         | 532 18 17-13 | Bolt 3/8-24 x 1.25 Gr. 8 Ptch Lhthd | 295        | 532 41 21-71 | Baffle Front   |
| 21         | 873 68 05-00 | Nut Crown Lock 5/16-18              | 296        | 872 14 04-06 | Bolt RDHD SQNK 1/4-20 x 3/4 Gr. 5  |
| 22         | 532 19 95-90 | Bracket Idler Sprt 92 CRD           | 297        | 873 93 04-00 | Nut Centerlock 1/4-20 unc  |
| 23         | 532 16 54-46 | Bracket Idler Sprt RF 92 CRD        | --         | 532 18 18-57 | Mandrel Assembly (Includes hous-<br>ing, shaft assembly, and bearing<br>only - pulley/nut/washer and blade<br>bolt/washers not included) |
| 24         | 532 16 52-42 | Bracket Suspension LF 92 CRD        | --         | 532 18 18-58 | Mandrel Asm CRD Lh Threads SVC   |
| 25         | 532 16 52-44 | Bracket Suspension RF 92 CRD        | --         | 532 41 37-11 | Replacement Mower, Complete<br>(Std. Deck - Order separately guage<br>wheel components key nos. 116<br>- 119)                            |
| 26         | 532 40 01-10 | Brace Susp Frt CRD                  |            |              |  |
| 27         | 532 16 55-68 | Bracket Asm. Susp RR 92 CRD         |            |              |  |
| 28         | 532 16 55-67 | Bracket Asm. Susp LR 92 CRD         |            |              |  |
| 30         | 532 17 39-84 | Screw Thd Rolling                   |            |              |  |
| 31         | 532 18 76-90 | Washer Spacer Mower Vented          |            |              |  |
| 32         | 532 15 35-32 | Mandrel Pulleys                     |            |              |  |
| 33         | 532 40 02-34 | Nut Flg Top Lock                    |            |              |  |
| 34         | 532 40 01-07 | Bracket Gauge Wheel LF 92 CRD       |            |              |  |
| 35         | 532 40 01-06 | Bracket Gauge Wheel RF 92 CRD       |            |              |  |
| 36         | 532 14 67-63 | Pulley Idler V-Groove Dim 4.25      |            |              |  |
| 40         | 873 68 06-00 | Nut Crownlock 3/8-16 unc            |            |              |  |

**NOTE:** All component dimensions given in U.S. inches  
1 inch = 25.4 mm



TRACTOR - - MODEL NO. CT151 (96061017908), PRODUCT NO. 960 61 01-79  
 MOWER LIFT **45**

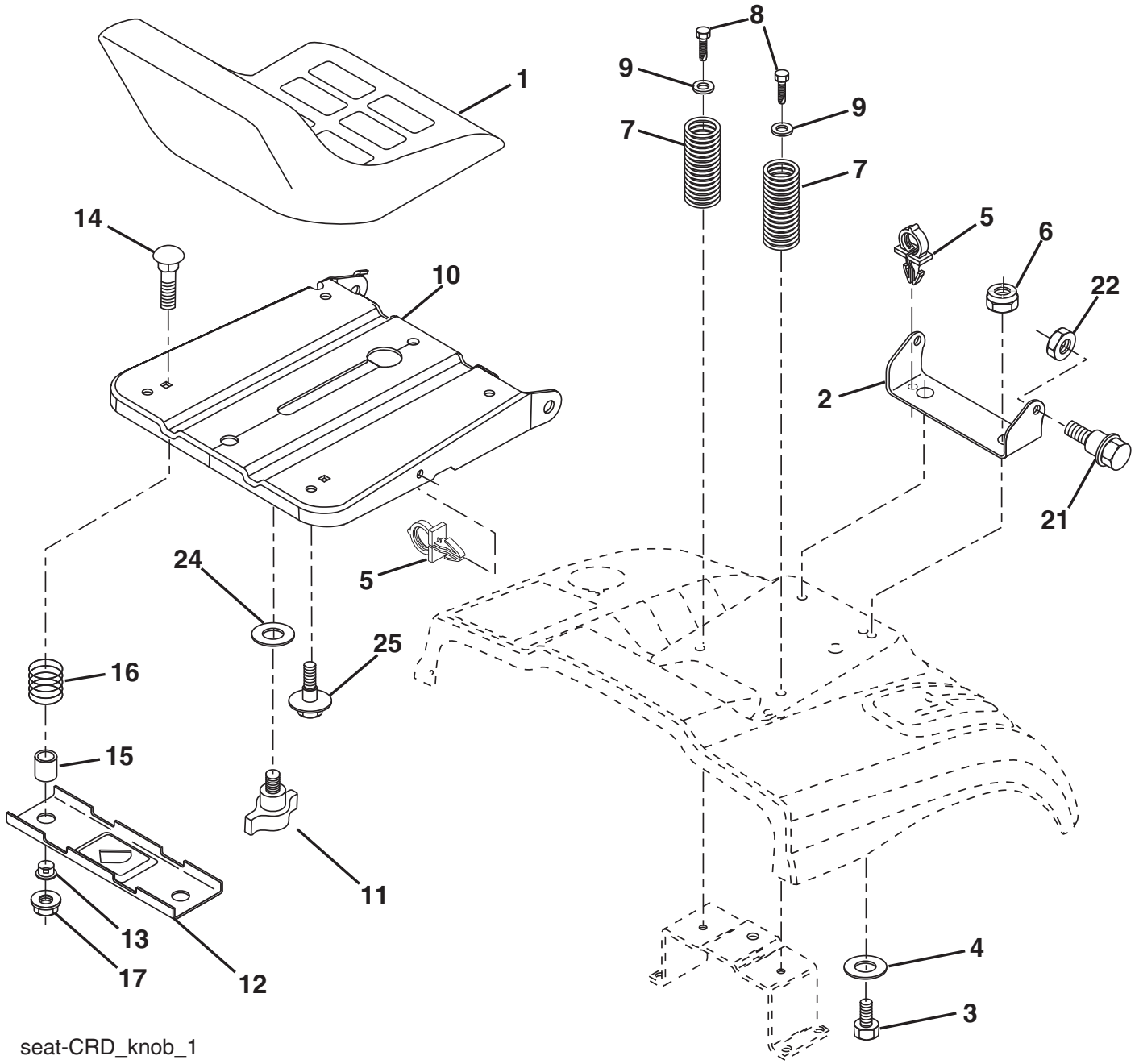


**TRACTOR - - MODEL NO. CT151 (96061017908), PRODUCT NO. 960 61 01-79  
MOWER LIFT 45**

| <b>KEY NO.</b> | <b>PART NO.</b> | <b>DESCRIPTION</b>            |
|----------------|-----------------|-------------------------------|
| 1              | 532 40 49-81    | Plunger Asm.                  |
| 2              | 532 15 94-71    | Shaft Asm. Lift               |
| 3              | 532 10 57-67    | Pin Groove                    |
| 4              | 812 00 00-02    | E Ring #5133-62               |
| 5              | 819 21 16-21    | Washer 21/32 x 1 x 21 Ga.     |
| 6              | 532 12 01-83    | Bearing Nylon                 |
| 7              | 532 12 56-31    | Grip Handle                   |
| 8              | 532 12 23-65    | Button Plunger Black          |
| 11             | 532 16 58-29    | Link Lift L.H.                |
| 12             | 532 16 58-31    | Link Lift R.H.                |
| 13             | 532 12 46-70    | Retainer Spring               |
| 15             | 532 17 32-88    | Link Front                    |
| 16             | 873 35 08-00    | Nut Jam Hex 1/2-13 unc        |
| 17             | 532 17 56-89    | Trunnion                      |
| 18             | 873 80 08-00    | Nut Lock w/Wsh 1/2-13 unc     |
| 19             | 532 13 98-68    | Arm Suspension Mower          |
| 20             | 532 19 42-09    | Pin Cotter 7/16 Bow Tie Lock  |
| 23             | 532 11 08-07    | Nut Special                   |
| 24             | 819 13 10-16    | Washer 13/32 x 5/8 x 16 Ga.   |
| 25             | 532 16 40-24    | Spring Comp                   |
| 26             | 532 16 94-84    | Retainer Clip                 |
| 27             | 532 16 45-43    | Rod Adj Lift Zinc             |
| 28             | 873 35 06-00    | Nut Hex Jam 3/8-16 unc        |
| 29             | 532 13 80-57    | Knob Inf 3/8-16 unc           |
| 30             | 532 15 02-33    | Trunnion Infin Height         |
| 31             | 532 16 98-65    | Bearing, Pvt. Lift.           |
| 32             | 873 54 06-00    | Nut Crownlock 3/8-24          |
| 36             | 532 15 50-97    | Pointer Height Indicator      |
| 37             | 532 12 39-35    | Plug Hole Blk                 |
| 38             | 817 06 05-16    | Screw 5/16-18 x 1             |
| 40             | 819 11 24-10    | Washer 11/32 x 1-1/2 x 10 Ga. |
| 41             | 532 12 39-34    | Scale Ind Height Blk          |
| 49             | 532 14 52-12    | Nut Hex flange lock           |
| 50             | 532 11 04-52    | Nut Push Phos &Oil            |

**NOTE:** All component dimensions given in U.S. inches.  
1 inch = 25.4 mm

**TRACTOR - - MODEL NO. CT151 (96061017908), PRODUCT NO. 960 61 01-79  
SEAT ASSEMBLY 42**



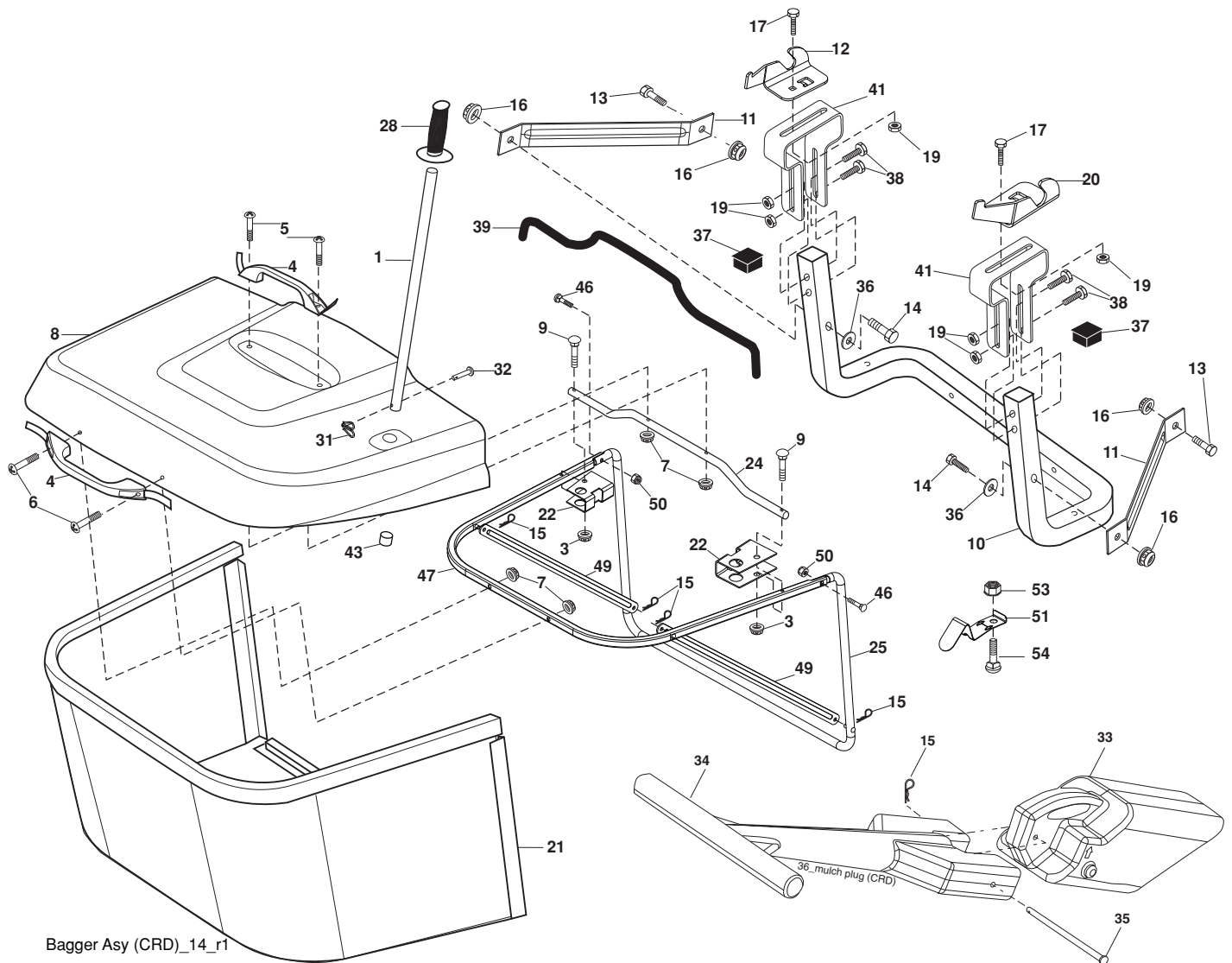
seat-CRD\_knob\_1

| KEY NO. | PART NO.     | DESCRIPTION                    |
|---------|--------------|--------------------------------|
| 1       | 532 19 01-20 | Seat                           |
| 2       | 532 14 05-51 | Bracket Pnt Pivot Seat (blk )  |
| 3       | 871 11 06-16 | Bolt Fin Hex 3/8-16 x 1        |
| 4       | 819 13 16-10 | Washer Flat 13/32 x 1 x 10 Ga. |
| 5       | 532 14 50-06 | Clip Push In Hinged            |
| 6       | 873 80 06-00 | Nut Lock Hx w/Ins. 3/8-16      |
| 7       | 532 12 41-81 | Spring Seat Cprsn 2 250 Blk Zi |
| 8       | 817 00 06-16 | Screw 3/8-16 x 1-1/2           |
| 9       | 819 13 16-14 | Washer 13/32 x 1 x 14 Ga.      |
| 10      | 532 19 55-30 | Pan Pnt Seat                   |
| 11      | 532 16 63-69 | Knob Seat Adj. Wingnut         |
| 12      | 532 17 46-48 | Bracket Pnt Mounting Switch    |

| KEY NO. | PART NO.     | DESCRIPTION                     |
|---------|--------------|---------------------------------|
| 13      | 532 12 12-48 | Bushing Snap Blk Nyl 50 Id      |
| 14      | 872 05 04-12 | Bolt Rdhd Sht Nk 1/4-20 x 1-1/2 |
| 15      | 532 13 43-00 | Spacer Split                    |
| 16      | 532 12 12-50 | Spring Cprsn Plate SW 1.310 Ga. |
| 17      | 532 12 39-76 | Nut Lock 1/4 Lge Flg Gr. 5 Zinc |
| 21      | 532 17 18-52 | Bolt Shoulder 5/16-18 unc-2A    |
| 22      | 873 80 05-00 | Nut Hex Lock w/Ins 5/16-18      |
| 24      | 819 17 19-12 | Washer 17/32 x 1-3/16 x 12 Ga.  |
| 25      | 532 12 70-18 | Bolt Shoulder 5/16-18 x 62      |

**NOTE:** All component dimensions given in U.S. inches.  
1 inch = 25.4 mm

**TRACTOR - - MODEL NO. CT151 (96061017908), PRODUCT NO. 960 61 01-79  
BAGGER 46**



Bagger Asy (CRD)\_14\_r1

| KEY NO. | PART NO.     | DESCRIPTION                          | KEY NO. | PART NO.     | DESCRIPTION                       |
|---------|--------------|--------------------------------------|---------|--------------|-----------------------------------|
| 1       | 532 16 52-49 | Tube Handle Bagger CRD               | 28      | 532 16 57-87 | Grip Handle Black                 |
| 3       | 532 12 39-76 | Nut Lock 1/4 Lge Flg Gr. 5 Zinc      | 31      | 532 16 94-84 | Retainer Clip                     |
| 4       | 532 16 99-16 | Handle Bagger w/Lvrs Blk CRD         | 32      | 532 12 68-75 | Rivet Rd Hd Drilled 3/8 Dia       |
| 5       | 874 98 10-24 | Screw Pan Head #10-24 x 1.50 Blk     | 33      | 532 16 55-71 | Plug Mulcher 92 CRD               |
| 6       | 874 98 10-32 | Screw Pan Hd                         | 34      | 532 16 55-70 | Handle Mulcher 92/107 CRD         |
| 7       | 873 40 10-00 | Nut Wiz Lock Hex Serr/Hd 10-24       | 35      | 532 16 55-72 | Pin Mulcher 92/107 CRD            |
| 8       | 532 18 10-95 | Cover Bagger CRD MS422               | 36      | 819 13 20-12 | Washer 13/32 x 1-1/4 x 12 Ga.     |
| 9       | 872 14 04-18 | Bolt Carriage 1/4-20 x 2.25d x Gr. 5 | 37      | 532 17 54-01 | Plug Support Bagger CRD           |
| 10      | 532 18 12-82 | Tube Support Bagger CRD              | 38      | 872 01 05-20 | Bolt 5/16-18 x 2-1/2              |
| 11      | 532 16 57-19 | Bracket Support Upper Bag CRD        | 39      | 532 41 62-57 | Seal 37"                          |
| 12      | 532 18 88-48 | Bracket Pivotn LH                    | 41      | 532 16 96-83 | Bracket Vert Adj Bagger CRD       |
| 13      | 874 76 06-12 | Bolt fin Hex 3/8-16 unc x 3/4        | 43      | 532 17 40-83 | Plug Tubing                       |
| 14      | 874 52 06-36 | Bolt Carr.                           | 46      | 872 11 05-10 | Bolt Carr. 5/16-18 x 1-1/4 Gr.5   |
| 16      | 873 90 06-00 | Nut Lock Flg. 3/8-16 unc             | 47      | 532 19 37-04 | Tube Upper Bagger                 |
| 15      | 532 12 46-70 | Retainer Spring                      | 49      | 532 19 33-05 | Bar Spreader                      |
| 17      | 872 14 05-06 | Bolt Rdhd Sht Sqnk 5/16-18 unc x 3/4 | 50      | 873 80 05-00 | Nut Lock Thx w/Ins. 5/16-18 unc   |
| 19      | 873 90 05-00 | Nut Lock Hex flange 5/16-18          | 51      | 532 19 99-03 | Latch Spring Bagger               |
| 20      | 532 18 88-47 | Bracket Pivot RH                     | 53      | 873 51 04-00 | Nut Keps Hex 1/4-20 unc           |
| 21      | 532 40 61-80 | Bag Asm CRD                          | 54      | 872 14 04-06 | Bolt Rdhd Sqnk 1/4-20 x 3/4 Gr. 5 |
| 22      | 532 16 57-81 | Bracket Side Bagger CRD              |         |              |                                   |
| 24      | 532 16 57-83 | Tube Pivot Bagger CRD                |         |              |                                   |
| 25      | 532 19 37-05 | Tube Front Bagger CRD                |         |              |                                   |

**NOTE:** All component dimensions given in U.S. inches  
1 inch = 25.4 mm

