

# MZ25 CE

**Spare parts**

**Ersatzteile**

**Pièces détachées**

**Reserve onderdelen**

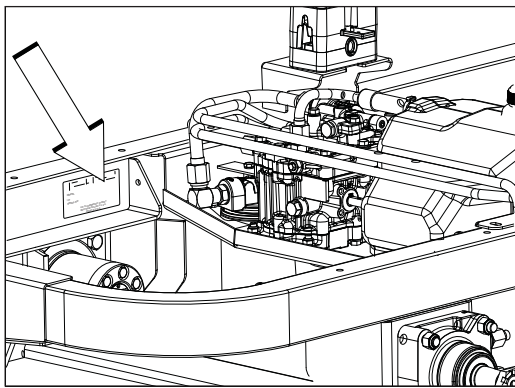
**Repuestos**

**Reservdelar**

When you need spare parts or support in service questions, warranty issues, etc., please consult the following professional:

This Parts Manual belongs to the machine with the manufacturing number:	Engine	Transmission

### Manufacturing Number



*The machine's manufacturing number can be found on the printed plate affixed to the engine compartment. Illustration at left shown with engine removed.*

Stated on the plate, from the top are:

- The machine's type designation (I.D.).
- The manufacturer's type number (Model).
- The machine's serial number (Serial no.)

*Please have the type designation and serial number available when ordering spare parts.*

The engine's manufacturing number is stamped on one of the valve covers.

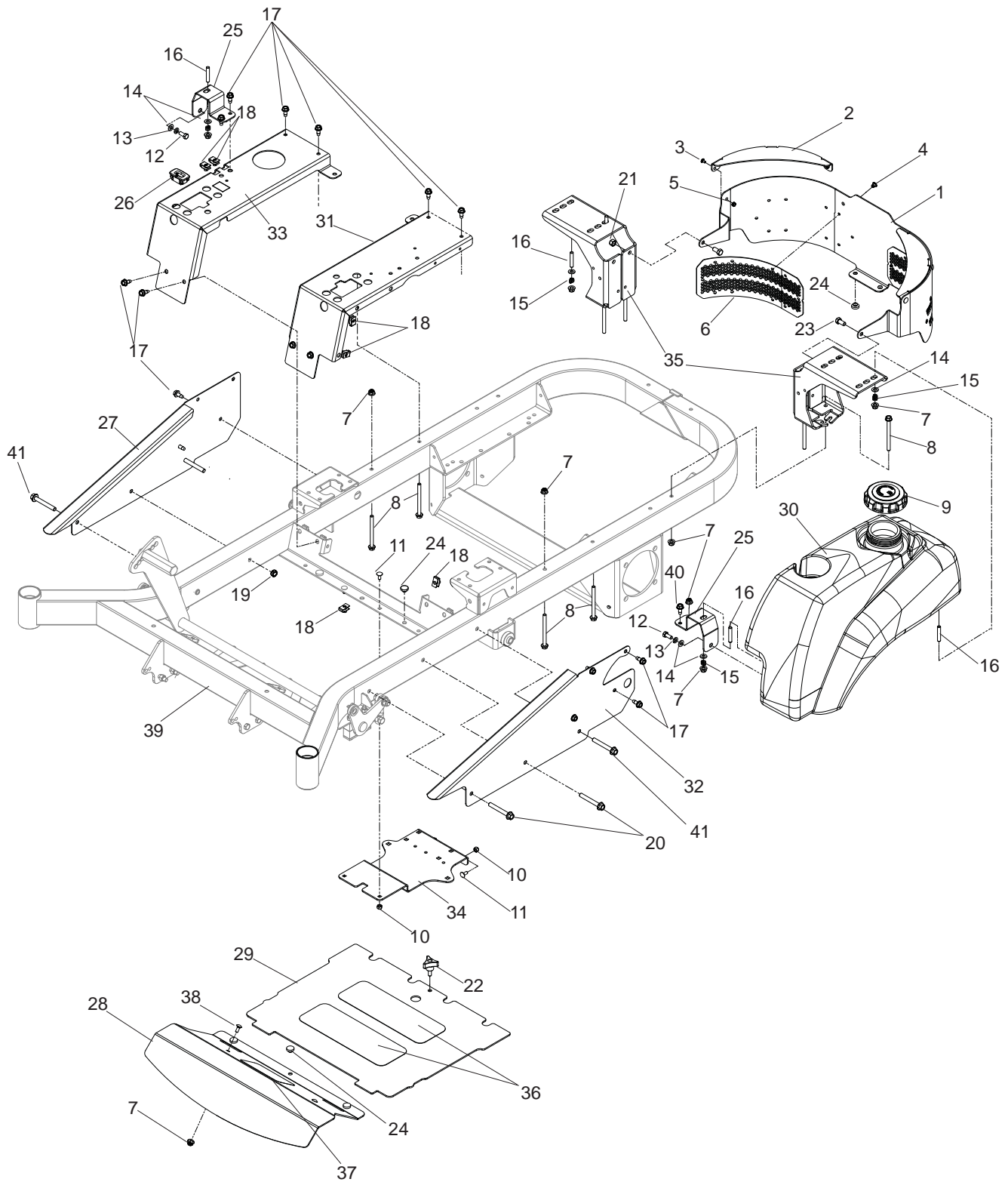
The plate states:

- The engine's model.
- The engine's type.
- Code

*Please have these available when ordering spare parts.*

The wheel motors and hydrostatic pumps have a barcode decal affixed at the rear.

# CHASSIS / FRAME

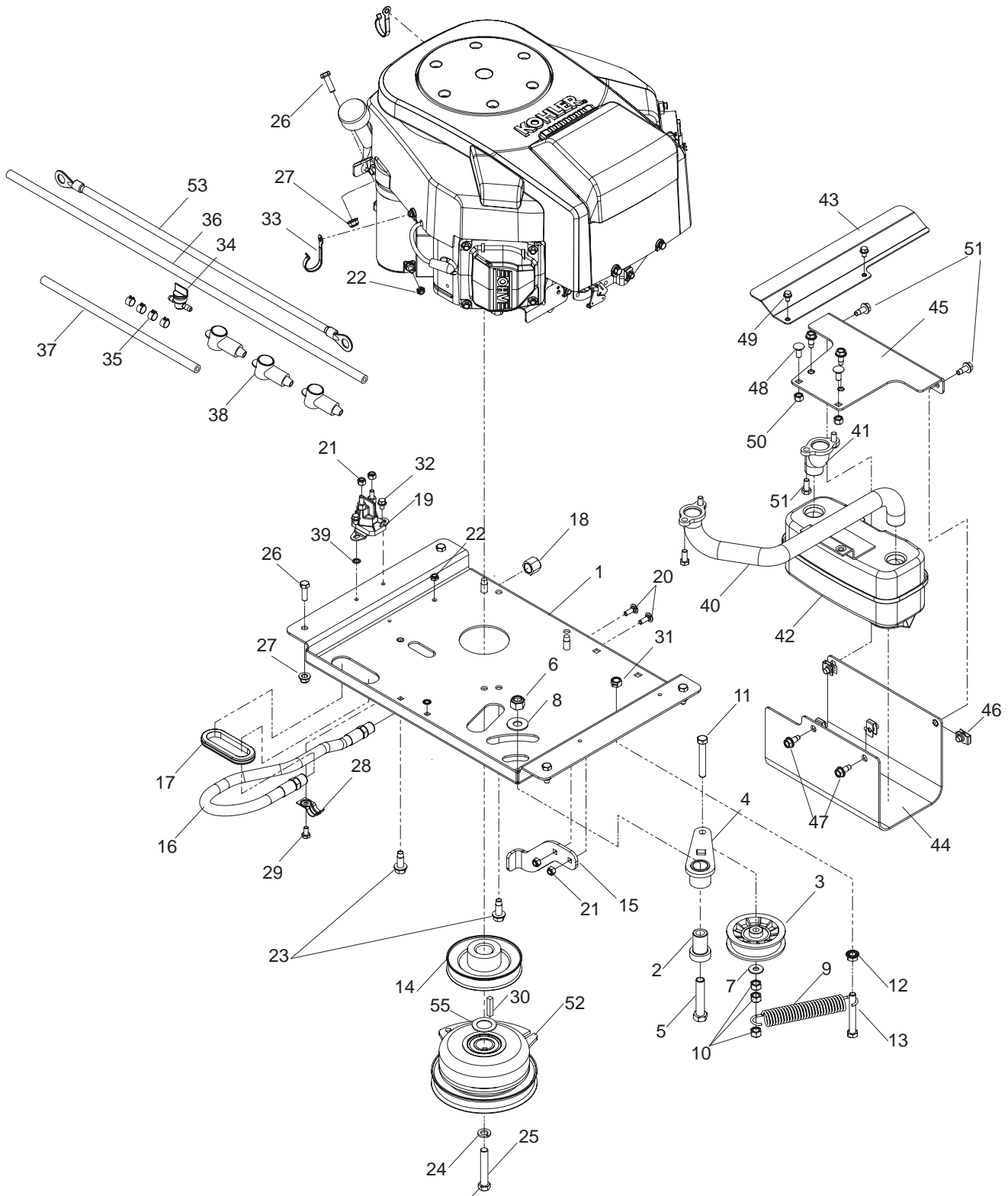


# CHASSIS / FRAME

---

ITEM	PART NO.	QTY.	DESCRIPTION	ITEM	PART NO.	QTY.	DESCRIPTION
1..	539 131594....	1	.... GUARD, REAR	22..	539 104411 ....	1	.... KNOB W/STUD
2..	539 131751....	2	.... SUPPORT, TOP	23..	539 990134....	2	.... HCS $\frac{3}{8}$ -16 x $\frac{3}{4}$
3..	539 111777 ....	6	.... RHSSNB $\frac{1}{4}$ -20 x $\frac{1}{2}$	24..	539 102587....	7	.... GROMMET, BUMPER
4..	539 200684..	12	.... RIVET, $\frac{3}{16}$ STAVEX	25..	539 131671....	2	.... SUPPORT, TANK
5..	539 108120....	6	.... NUT $\frac{1}{4}$ -20 HEX THIN NYLOC	26..	539 110074 ....	1	.... HOUR METER
6..	539 131753....	2	.... PANEL, HEX, RR	27..	539 131579....	1	.... SIDE, RT
7..	539 112899..	15	.... NUT $\frac{5}{16}$ -18 FLANGE NYLOC	28..	539 132380....	1	.... PLATE, FOOTREST
8..	539 131780....	8	.... HHFS $\frac{5}{16}$ -18 x $3\frac{3}{4}$	29..	539 132744....	1	.... PLATE, FLOOR W/DECALS
9..	539 130393....	1	.... FUEL CAP	30..	539 104409....	1	.... FUEL TANK, LEFT
10..	539 976978....	4	.... NUT $\frac{1}{4}$ -20 HEX NYLOC	31..	539 131589....	1	.... PANEL, FILLER, LT
11..	539 111786 ....	4	.... RHSSNB $\frac{1}{4}$ -20 x $\frac{5}{8}$	32..	539 131577....	1	.... SIDE, LT
12..	539 976934....	2	.... HCS $\frac{5}{16}$ -18 x $\frac{3}{4}$	33..	539 131591....	1	.... PANEL, FILLER, RT
13..	539 990187....	2	.... WASHER $\frac{5}{16}$ SLW	34..	539 131537....	1	.... MOUNT, BATTERY
14..	539 990188....	9	.... WASHER $\frac{5}{16}$ SAE FLAT	35..	539 131692....	2	.... MOUNT, TANK, RR
15..	539 102845....	6	.... SPRING, TANK MOUNT	36..	539 977778....	2	.... ABRASIVE PAD
16..	539 102502....	6	.... STUD $\frac{5}{16}$ C	37..	539 121322....	2	.... FOOT PAD
17..	539 107475..	16	.... BOLT $\frac{5}{16}$ -18 x $\frac{3}{4}$ THD FRM	38..	539 990208....	3	.... RHSNB $\frac{5}{16}$ -18 x 1
18..	539 104763..	12	.... RETAINER, U TYPE	39..	539 132743....	1	.... FRAME W/DECALS 52", 61"
19..	539 200282....	6	.... NUT $\frac{3}{8}$ -16 HEX JAM NYLOC	40..	539 113226....	1	.... BOLT $\frac{5}{16}$ -18 x 1 THD FRM
20..	539 131781....	2	.... HHFS $\frac{3}{8}$ -16 x $2\frac{3}{4}$	41..	539 133006....	4	.... HHFS $\frac{3}{8}$ -16 x $2\frac{1}{2}$
21..	539 976979....	2	.... NUT $\frac{3}{8}$ -16 HEX NYLOC				

# ENGINE PLATE

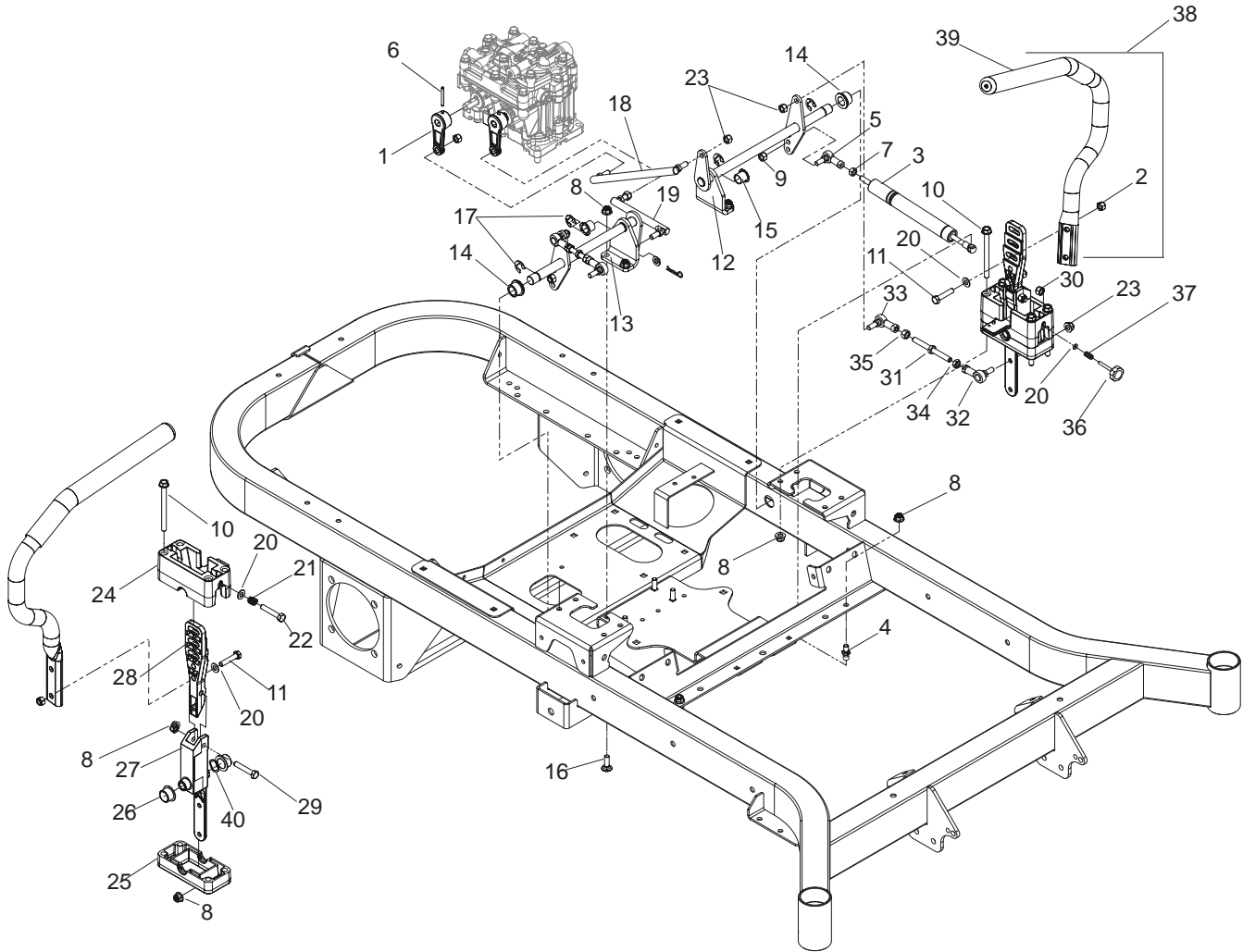


Torque to 50 ft/lbs

# ENGINE PLATE

ITEM	PART NO.	QTY.	DESCRIPTION	ITEM	PART NO.	QTY.	DESCRIPTION
1..	539 131726....	1	.... PLATE, ENGINE	29..	539 990071....	2	.... HCS ¼-20 x ½
2..	539 101231....	1	.... IDLER SPINDLE	30..	539 912757....	1	.... KEY ¼ SQ x 1¼
3..	539 110311 ....	1	.... IDLER PULLEY	31..	539 990546....	1	.... NUT ¾-16 HEX CNTRLK
4..	539 112092....	1	.... IDLER ARM WLDMT	32..	539 990302....	2	.... SCREW ¼-20 x ¾ THD FRM
5..	539 108346....	1	.... HCS ½-13 x 2½	33..	539 107098....	2	.... CLAMP
6..	539 101331....	1	.... NUT ½ HEX NYLOC	34..	539 916325....	1	.... FUEL VALVE
7..	539 990692....	1	.... WASHER 5/16 STD FLT	35..	539 912222....	4	.... HOSE CLAMP
8..	539 990550....	1	.... WASHER ½ STD FLT	36..	539 105382....	1	.... FUEL LINE-30"
9..	539 101977....	1	.... TRACTION SPRING	37..	539 108212....	1	.... FUEL LINE-13"
10..	539 976979....	3	.... NUT ¾-16 HEX NYLOC	38..	539 102759....	3	.... INSULATOR
11..	539 110122....	1	.... HCS ¾-16 x 2½ TPBLT	39..	539 990053....	1	.... WASHER ¼ INT TOOTH LK
12..	539 990613....	1	.... NUT ¾-16 HEX WHIZLK	40..	539 131739....	1	.... MANIFOLD, FT
13..	539 102612....	1	.... HCS ¾-16 x 2¾	41..	539 131740....	1	.... MANIFOLD, RR
14..	539 109639....	1	.... PULLEY	42..	539 131604....	1	.... MUFFLER ASM TWIN
15..	539 131728....	1	.... TIE DOWN, CLUTCH	43..	539 131758....	1	.... SHIELD, HEAT
16..	539 131729....	1	.... DRAIN, OIL	44..	539 131769....	1	.... GUARD, MUFFLER
17..	539 107210....	1	.... GROMMET	45..	539 131771....	1	.... MOUNT, MUFFLER
18..	539 101364....	1	.... PLUG-OIL	46..	539 104763....	4	.... RETAINER, U TYPE
19..	539 101714....	1	.... SOLENOID	47..	539 107475....	6	.... BOLT 5/16-18 x ¾ THD FRM
20..	539 990074....	2	.... RHSNB ¼-20 x ¾ GR2 ZN	48..	539 990316....	2	.... RHSNB 5/16-18 x ¾
21..	539 976978....	6	.... NUT ¼-20 HEX NYLOC	49..	539 990302....	2	.... SCREW ¼-20 x ¾ THD FRM
22..	539 108120....	3	.... NUT ¼-20 HEX THIN NYLOC	50..	539 990717....	2	.... NUT 5/16-18 HEX NYLOC
23..	532 120616....	4	.... BOLT ¾-16 x 1 THD FRM	51..	539 976934....	4	.... HCS 5/16-18 x ¾
24..	539 990247....	1	.... WASH 7/16 SLW	52..	539 132732....	1	.... CLUTCH
25..	539 991120....	1	.... HCS 7/16-20 x 2½	53..	539 132412....	1	.... CABLE, POSITIVE
26..	539 990209....	5	.... HCS 5/16-18 x 1	54..	539 115675....	1	.... WASHER 1.025 ID x 1.64
27..	539 112899....	5	.... NUT 5/16-18 FLANGE NYLOC		NOT SHOWN		
28..	539 101363....	2	.... CLAMP		539 107516 ...	1	.... PIGTAIL

# STEERING



# STEERING

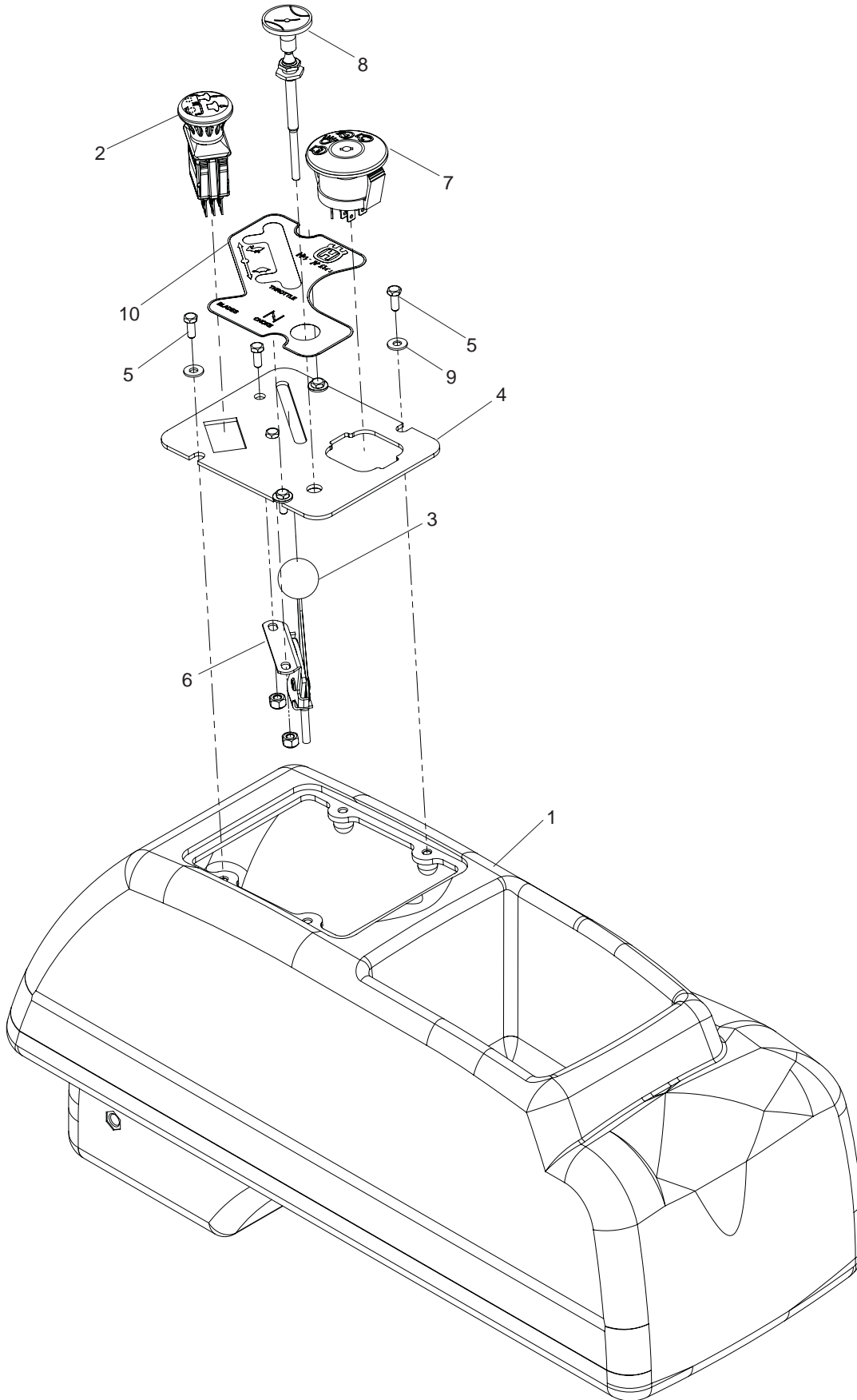
---

ITEM	PART NO.	QTY.	DESCRIPTION	ITEM	PART NO.	QTY.	DESCRIPTION
1..	539 131546....	2	ARM, PUMP	22..	539 108394....	1	HCS $\frac{5}{16}$ -18 x $1\frac{3}{4}$ TPBLT
2..	539 990717....	4	NUT $\frac{5}{16}$ -18 HEX NYLOC	23..	539 108743....	4	NUT $\frac{5}{16}$ -24 CNTRLK
3..	539 131658....	2	DAMPENER W/SPRING	24..	539 131517....	1	BLOCK, UPPER
4..	539 110607....	2	STUD, 10MM BALL	25..	539 131519....	1	BLOCK, LOWER
5..	539 131749....	2	ROD END	26..	539 131518....	2	BEARING, FLANGE
6..	539 131559....	2	PIN, SPIRAL, $\frac{5}{32}$ x $1\frac{1}{2}$	27..	539 131520....	1	PIVOT SECTION, DR CNTRL
7..	539 127046....	2	NUT M8 x 1.25 STD HEX	28..	539 131521....	1	MOUNT, DR CNTRL HANDLE
8..	539 112899..	20	NUT $\frac{5}{16}$ -18 FLANGE NYLOC	29..	539 990669....	1	HCS $\frac{5}{16}$ -18 x $1\frac{3}{4}$
9..	539 118496....	2	NUT M8 NYLOC	30..	539 990196....	2	NUT $\frac{5}{16}$ -18 HEX
10..	539 131780....	8	HHFS $\frac{5}{16}$ -18 x $3\frac{3}{4}$	31..	539 131550....	1	JACK SCREW
11..	539 976935....	4	HCS $\frac{5}{16}$ -18 x $1\frac{1}{2}$	32..	539 110604....	1	SPHERICAL ROD END LH
12..	539 132163....	1	CONTROL WLDMT, LT	33..	539 110603....	1	SPHERICAL ROD END RH
13..	539 132164....	1	CONTROL WLDMT, RT	34..	539 991073....	1	NUT $\frac{5}{16}$ -24 HEX JAM LH
14..	539 132168....	2	BUSHING $\frac{5}{8}$ FLANGED	35..	539 990223....	1	NUT $\frac{5}{16}$ -24 HEX
15..	539 132169....	2	BUSHING, CLIP, $\frac{5}{8}$	36..	539 131799....	1	KNOB
16..	539 990208....	4	RHSNB $\frac{5}{16}$ -18 x 1	37..	539 101224....	1	SPRING
17..	539 105069....	4	E-RING	38..	539 132009....	1	LEVER, DRIVE W/GRIP RT
18..	539 131551....	1	LINK, MOTION, LT		539 132010....	1	LEVER, DRIVE W/GRIP LT
19..	539 131552....	1	LINK, MOTION, RT	39..	539 130894....	2	GRIP, DRIVER LEVER
20..	539 990188....	5	WASHER $\frac{5}{16}$ SAE FLAT	40..	539 133007....	2	WASHER, WAVE
21..	539 102845....	1	SPRING, TANK MOUNT				



# CONTROLS

---

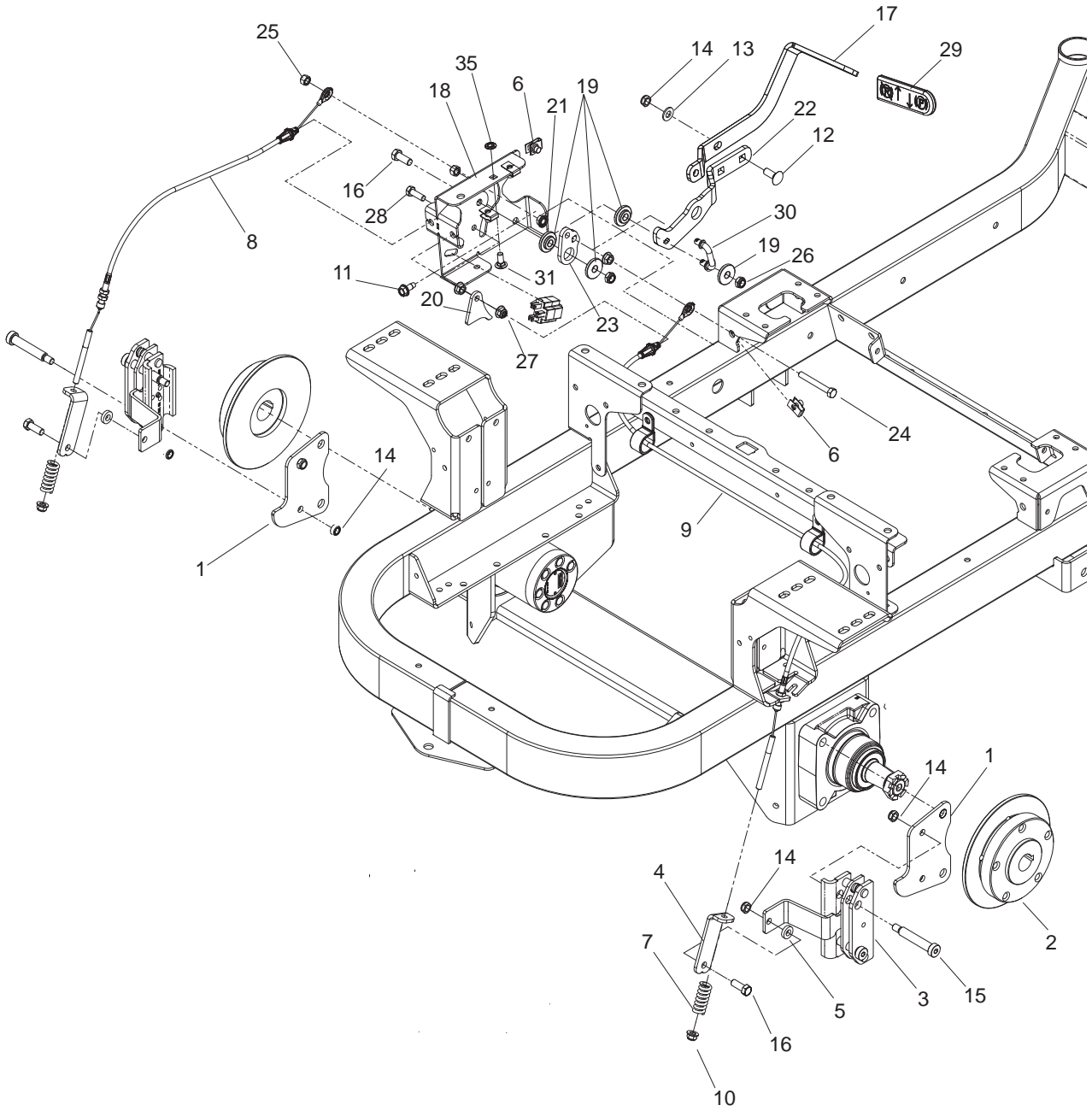


# CONTROLS

---

ITEM	PART NO.	QTY.	DESCRIPTION	ITEM	PART NO.	QTY.	DESCRIPTION
1..	539 107593....	1	.... CONSOLE	7..	539 107541....	1	.... IGNITION SWITCH
2..	539 131627....	1	.... SWITCH, PTO 10 AMP	8..	539 130209....	1	.... CONTROL, CHOKE
3..	539 112438....	1	.... THROTTLE CABLE	9..	539 105408....	4	.... WASHER #10 FLAT
4..	539 131721....	1	.... CONSOLE PLATE	10..	539 132723....	1	.... DECAL, CONSOLE
5..	539 990411....	6	.... SCREW #10-24 x ½ SLT HEX	NOT SHOWN			
6..	539 976977....	2	.... NUT #10-24 HEX NYLOC	539 976856 ...	1	.... TIE, PLASTIC	

# PARKING BRAKE

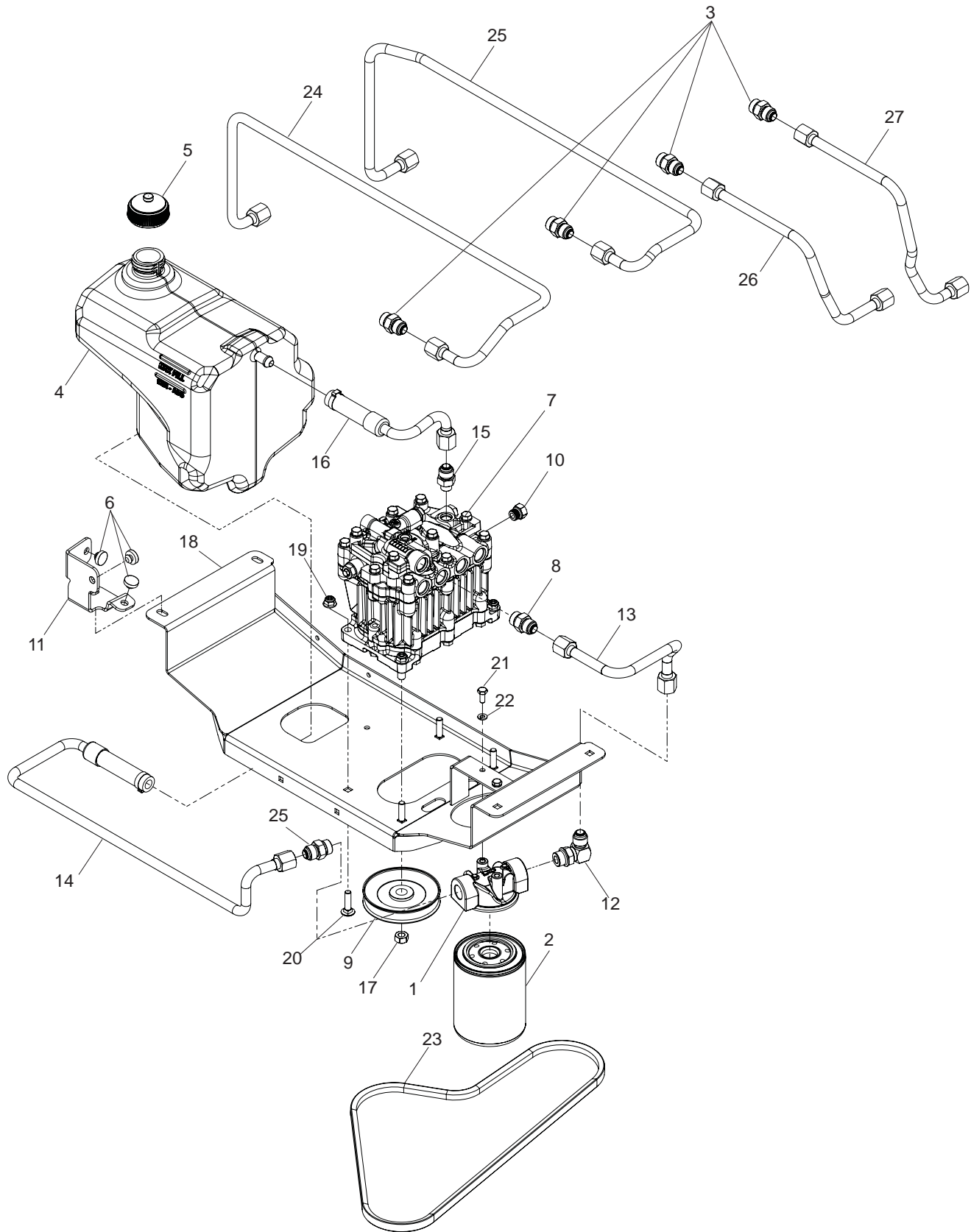


# PARKING BRAKE

---

ITEM	PART NO.	QTY.	DESCRIPTION	ITEM	PART NO.	QTY.	DESCRIPTION
1..	539 131599....	2	.... PLATE, BRAKE	18..	539 132158....	1	.... MOUNT, BRAKE WELDMENT
2..	539 131737....	2	.... HUB, 5 BOLT	19..	539 132161....	4	.... BUSHING, BRAKE
3..	539 131738....	2	.... CALIPER, PARK BRAKE	20..	539 132154....	1	.... ACTUATOR, SWITCH
4..	539 132176....	3	.... BRACKET, L	21..	539 990585....	3	.... NUT <sup>5</sup> / <sub>16</sub> -18 HEX WHIZLK
5..	539 109562....	3	.... WASHER <sup>3</sup> / <sub>8</sub> x <sup>3</sup> / <sub>4</sub> x .187 TK	22..	539 132423....	1	.... LEVER, BRAKE
6..	539 104763....	1	.... RETAINER, U TYPE	23..	539 132153....	1	.... BELLCRAKE, BRAKE
7..	539 113952....	2	.... SPRING	24..	539 108396....	1	.... HCS <sup>5</sup> / <sub>16</sub> -18 x 2 <sup>1</sup> / <sub>2</sub> TPBLT
8..	539 132173....	1	.... CABLE, BRAKE, SHORT	25..	539 990717....	1	.... NUT <sup>5</sup> / <sub>16</sub> -18 HEX NYLOC
9..	539 132174....	2	.... CABLE, BRAKE, LONG	26..	539 200282....	2	.... NUT <sup>3</sup> / <sub>8</sub> -16 HEX JAM NYLOC
10..	539 112899....	4	.... NUT <sup>5</sup> / <sub>16</sub> -18 FLANGE NYLOC	27..	539 112899....	1	.... NUT <sup>5</sup> / <sub>16</sub> -18 FLANGE NYLOC
11..	539 107475....	3	.... BOLT <sup>5</sup> / <sub>16</sub> -18 x <sup>3</sup> / <sub>4</sub> THD FRM	28..	539 990209....	1	.... HCS <sup>5</sup> / <sub>16</sub> -18 x 1
12..	539 990645....	2	.... RHSNB <sup>3</sup> / <sub>8</sub> -16 x 1	29..	539 105036....	1	.... GRIP, BRAKE HANDLE
13..	539 990122....	2	.... WASHER, <sup>3</sup> / <sub>8</sub> SAE FLT	30..	539 132424....	1	.... LINKAGE, BRAKE
14..	539 200282....	9	.... NUT <sup>3</sup> / <sub>8</sub> -16 HEX JAM NYLOC	31..	539 990316....	1	.... RHSNB <sup>5</sup> / <sub>16</sub> -18 x <sup>3</sup> / <sub>4</sub>
15..	539 113951....	4	.... SB <sup>3</sup> / <sub>8</sub> -16 x 2 <sup>1</sup> / <sub>2</sub> SKT HD		NOT SHOWN		
16..	539 990563....	5	.... HCS <sup>3</sup> / <sub>8</sub> -16 x 1		539 976856 ...	2	.... TIE, PLASTIC
17..	539 132151....	1	.... ARM, BRAKE				

# HYDRAULIC PUMP-MOTOR



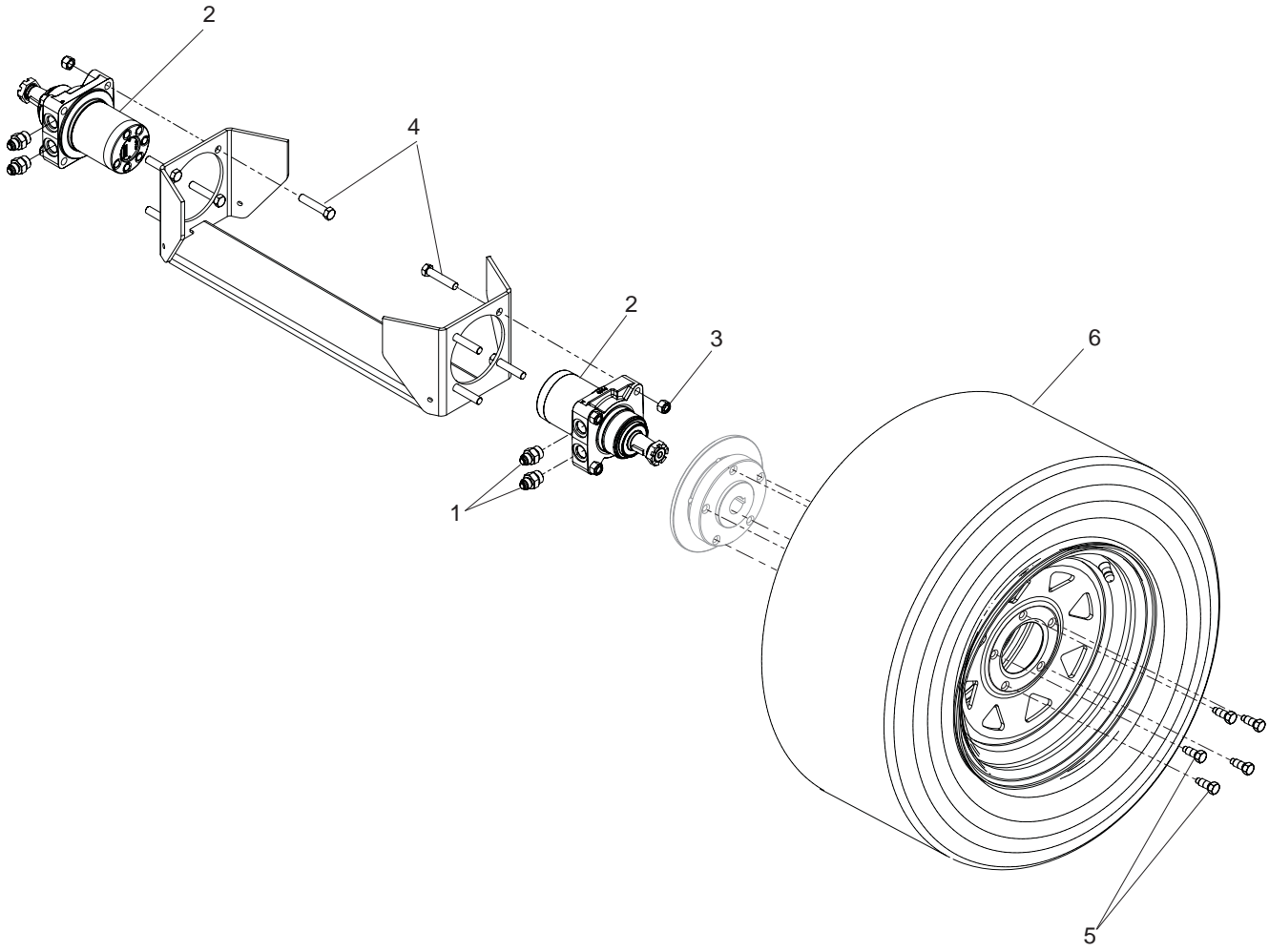
# HYDRAULIC PUMP-MOTOR

---

ITEM	PART NO.	QTY.	DESCRIPTION	ITEM	PART NO.	QTY.	DESCRIPTION
1..	539 105892....	1	.... FILTER HEAD	17..	539 131528....	1	.... NUT M10-1.5 L/H HEX
2..	539 105893....	1	.... FILTER, OIL	18..	539 131773....	1	.... PLATE, PUMP
3..	539 101237....	4	.... STRAIGHT CONNECTOR	19..	539 112899....	4	.... NUT <sup>5</sup> / <sub>16</sub> -18 FLANGE NYLOC
4..	539 131663....	1	.... RESERVOIR	20..	539 100472....	4	.... RHSNB <sup>5</sup> / <sub>16</sub> -18 x 1 <sup>1</sup> / <sub>4</sub>
5..	539 101202....	1	.... OIL CAP	21..	539 990072....	2	.... HCS <sup>1</sup> / <sub>4</sub> -20 x <sup>5</sup> / <sub>8</sub>
6..	539 102587....	3	.... GROMMET, BUMPER	22..	539 990052....	2	.... WASHER, <sup>1</sup> / <sub>4</sub> SPLIT LOCK
7..	539 131657....	1	.... PUMP, DUP10S	23..	539 111445 ....	1	.... BELT, IZT
8..	539 132889....	2	.... FITTING, 10-8 STRAIGHT	24..	539 131531....	1	.... HYDRO LINE
9..	539 131727....	1	.... PULLEY, PUMP	25..	539 131532....	1	.... HYDRO LINE
10..	539 131895....	1	.... PLUG, 6408-6	26..	539 131533....	1	.... HYDRO LINE
11..	539 132417....	1	.... SUPPORT, RESERVOIR	27..	539 131534....	1	.... HYDRO LINE
12..	539 132888....	1	.... ELBOW	NOT SHOWN			
13..	539 132887....	1	.... HYDRO LINE, CHARGE	539 133028 ...	1	.... SEAL KIT (DUP10S PUMP)	
14..	539 132886....	1	.... HYDRO LINE, INLET	539 133029 ...	1	.... INPUT SEAL KIT (DUP10S PUMP)	
15..	539 131748....	1	.... FITTING, HYDRO				
16..	539 131529....	1	.... HYDRO LINE, CASE				

# WHEELS AND TIRES

---



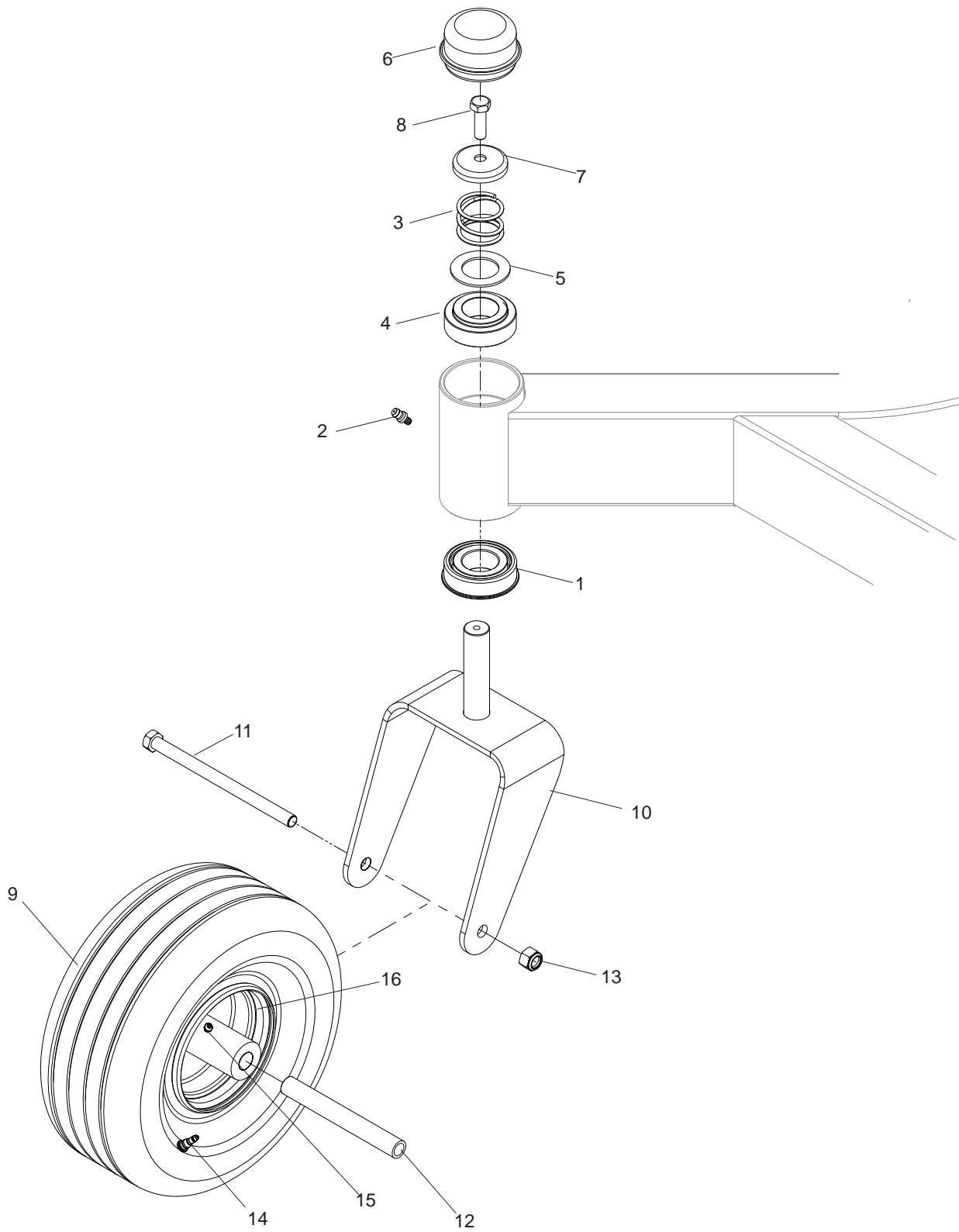
# WHEELS AND TIRES

---

ITEM	PART NO.	QTY.	DESCRIPTION	ITEM	PART NO.	QTY.	DESCRIPTION
1..	539 101239....4	....	STRAIGHT CONNECTOR	4..	539 101332....8	....	HCS ½-13 x 2¾
2..	539 114523....2	....	WHEEL MOTOR, TJ	5..	532 140080..10	....	BOLT, HUB
3..	539 101331....8	....	NUT ½ HEX NYLOC	6..	532 140556....2	....	TIRE, 23 x 10.50



# CASTERS



# CASTERS

---

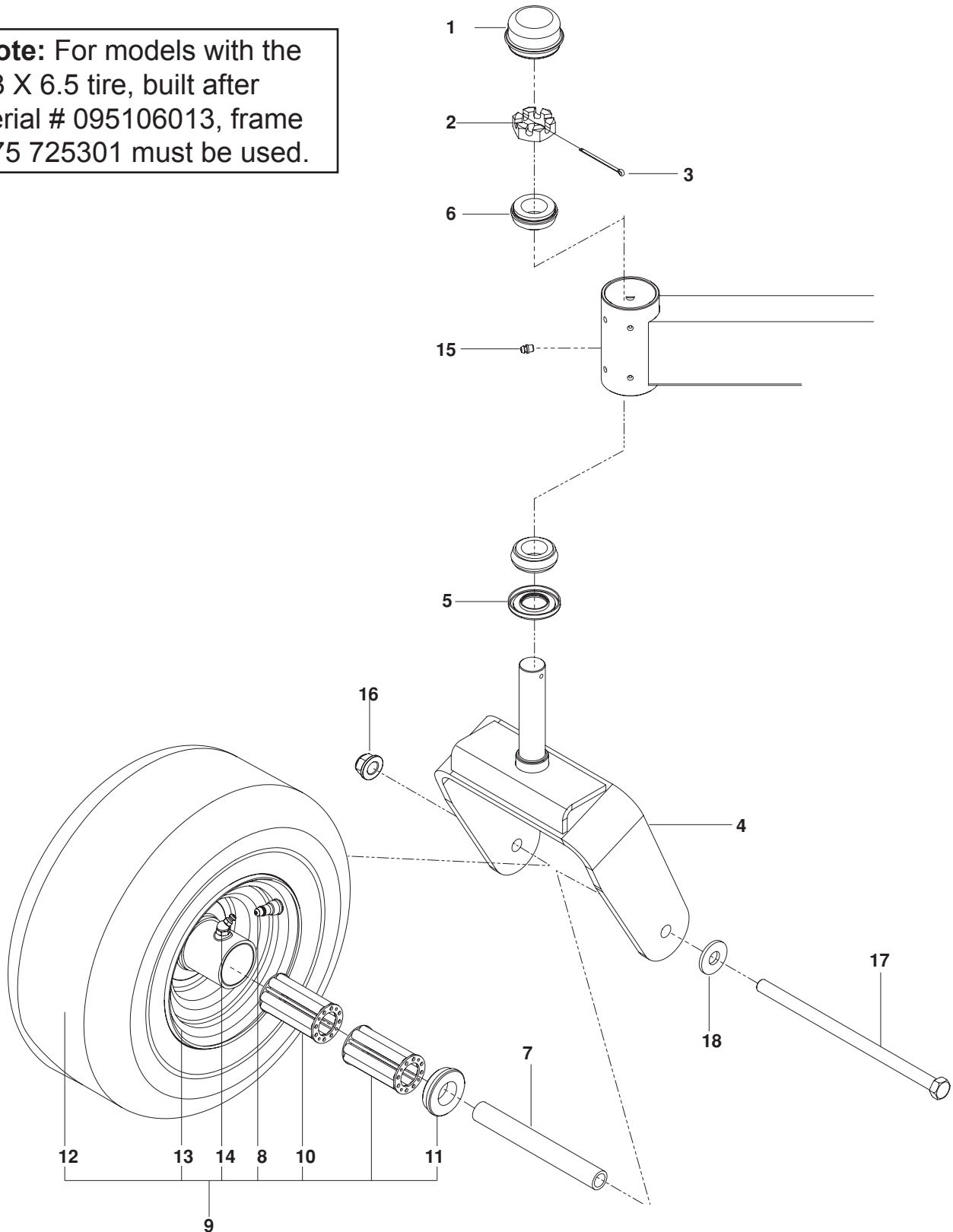
ITEM	PART NO.	QTY.	DESCRIPTION
1..	539 112660....2	....	BEARING, FLANGED
2..	539 115638....2	.... <sup>3</sup> / <sub>16</sub> "	DRIVE ZERK
3..	539 115747....2	....	SPRING, CASTER
4..	539 117901....2	....	BUSHING, CASTER
5..	539 115675....2	....	WASHER 1.025 ID x 1.64
6..	539 102535....2	....	GREASE CAP
7..	539 115749....2	....	PLUG, CASTER
8..	539 990209....2	....	HCS <sup>5</sup> / <sub>16</sub> -18 x 1
9..	539 104572....2	....	TIRE ASSEMBLY
10..	539 131674....2	....	YOKE, CASTER

ITEM	PART NO.	QTY.	DESCRIPTION
11..	539 102855....2	....	HCS ½-13 x 7½
12..	539 102856....2	....	SPACER
13..	539 101331....2	....	NUT ½ HEX NYLOC
14..	539 912234....2	....	AIR VALVE
15..	539 976997....2	....	ZERK
16..	539 104573....2	....	RIM
NOT SHOWN			
	539 102485 ...4	....	ROLLER BEARING
	539 102484 ...4	....	BEARING, FLANGED

# CASTER WHEEL

**For models equipped with 13 x 6.5 tire**

**Note:** For models with the 13 X 6.5 tire, built after serial # 095106013, frame 575 725301 must be used.

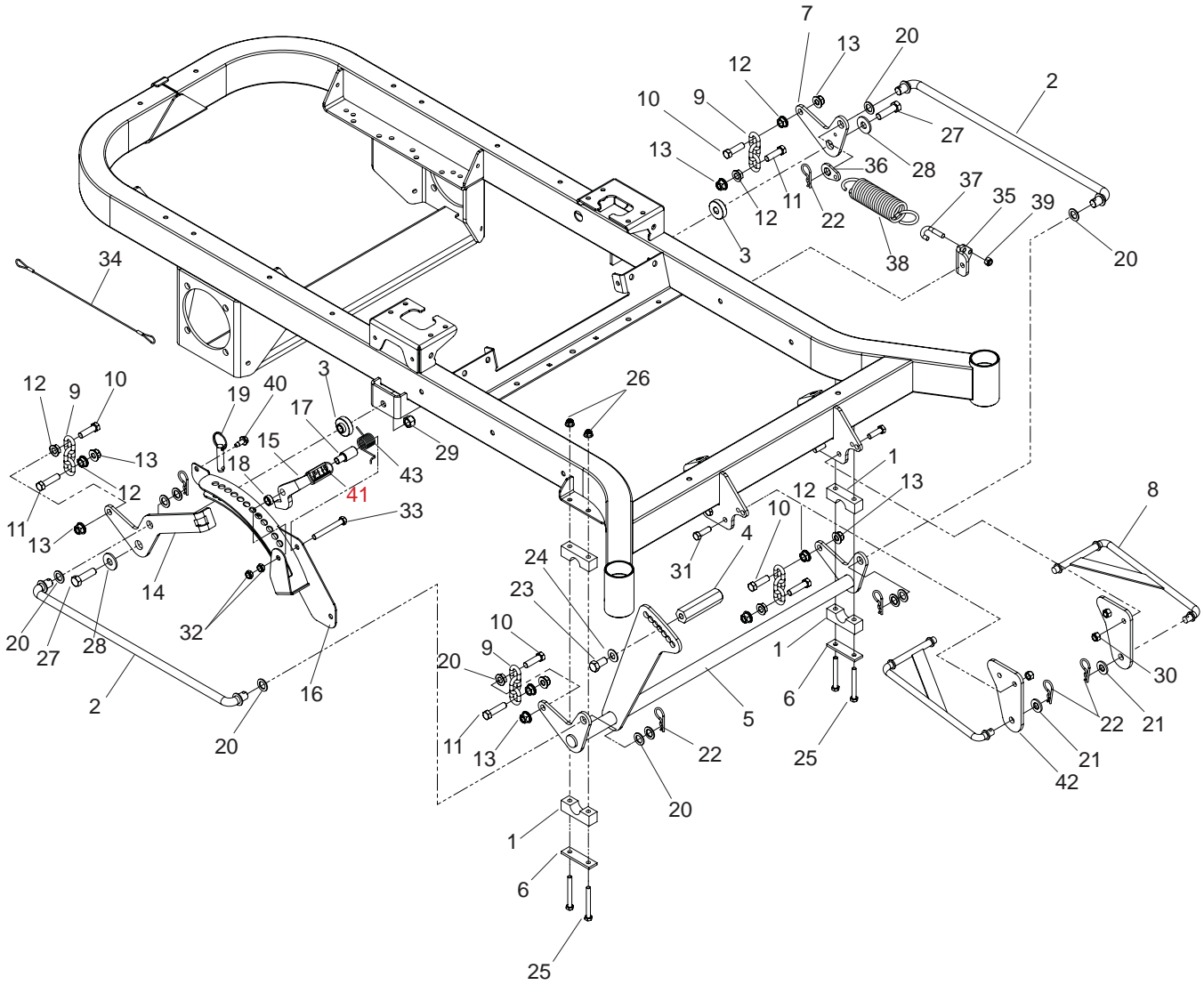


# CASTER WHEEL

---

ITEM	PART NO.	QTY.	DESCRIPTION	ITEM	PART NO.	QTY.	DESCRIPTION
1..	539 102535....	2....	GREASE CAP	10..	539 105307....	4....	BEARING 3¼ CAGE
2..	539 102852....	2....	SLOTTED JAM NUT 1"-14	11..	539 102484....	4....	BEARING, FLANGED
3..	539 102889....	2....	COTTER PIN 1/8 x 2	12..	575 622201....	2....	TIRE, 13 x 6.5
4..	575 329202....	2....	YOKE, CASTER	13..	575 622101....	2....	RIM, CASTER TIRE
5..	539 102851....	2....	SEAL	14..	539 103300....	2....	ZERK
6..	539 102543....	4....	BEARING	15..	539 101474....	2....	ZERK
7..	575 334901....	2....	SPACER, PIVOT	16..	521 991101 ...	2....	NUT ½-13 HEX FLG NYLOC
8..	539 912234....	2....	AIR VALVE	17..	539 105517....	2....	HCS ½-13 x 9½
9..	575 348701....	2....	WHEEL ASSY 13 x 6.5	18..	539 109554....	2....	WASHER ½ FLAT

# MOWER LIFT / DECK LIFT

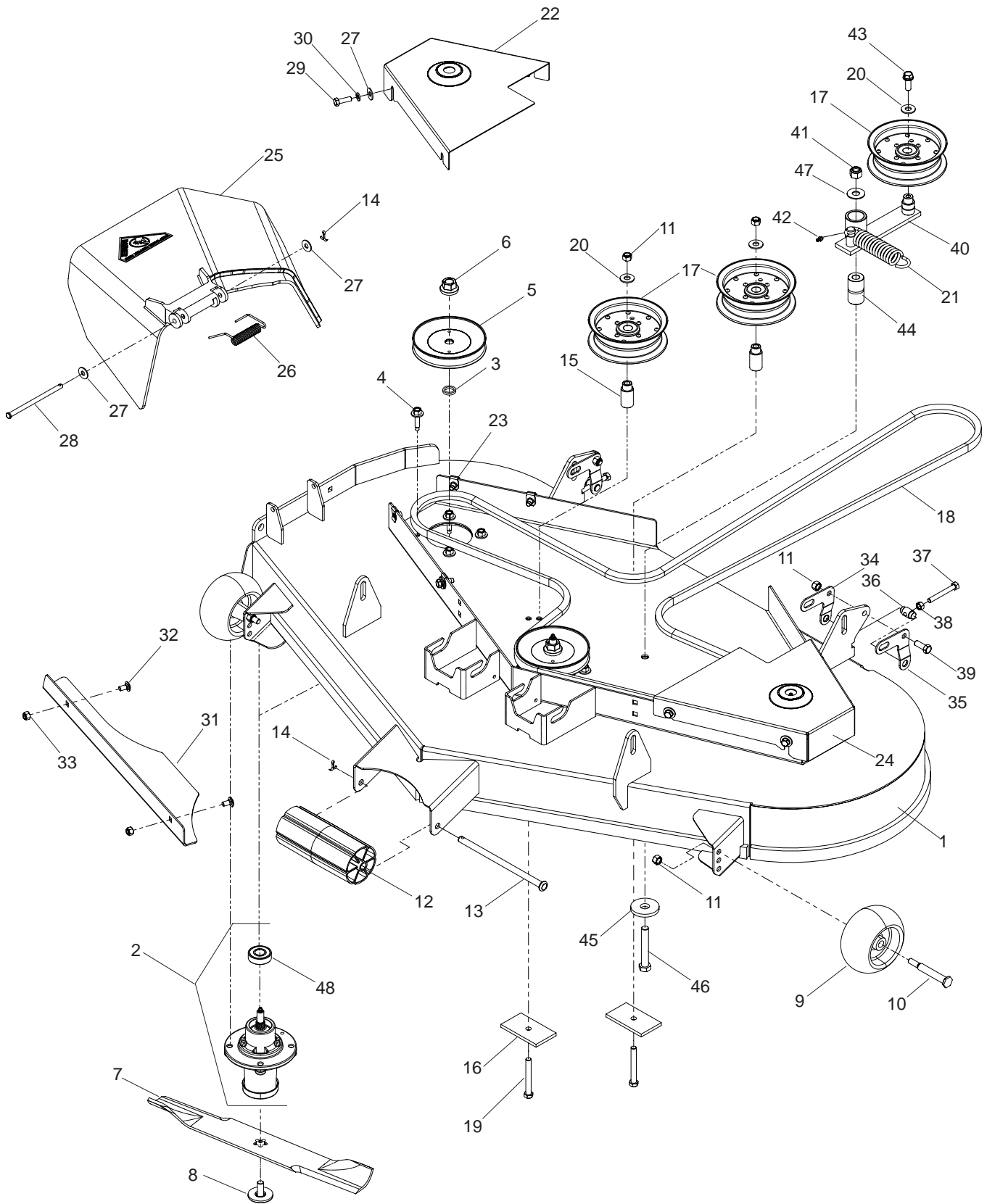


# MOWER LIFT / DECK LIFT

---

ITEM	PART NO.	QTY.	DESCRIPTION	ITEM	PART NO.	QTY.	DESCRIPTION
1..	539 104808....4	....	PILLOW BLOCK	23..	539 990646....1	....	HCS ½-13 x 1
2..	539 110808....2	....	DECK LIFT LINK	24..	539 102843....1	....	WASHER, 7/16" SPRING
3..	539 118937....2	....	IDLER SPACER	25..	539 101721....4	....	HCS 5/16-18 x 2¾
4..	539 131556....1	....	PEDAL, FOOT, HEX	26..	539 112899....5	....	NUT 5/16-18 FLANGE NYLOC
5..	539 131558....1	....	SHAFT, FRONT-LIFT	27..	539 108181....2	....	HCS ½-13 x 1¾ GR 8
6..	539 104807....2	....	REINFORCEMENT BAR	28..	539 109554....2	....	WASHER ½ FLAT
7..	539 131897....1	....	BELLCRANK, RR, LIFT	29..	539 101331....2	....	NUT ½ HEX NYLOC
8..	539 112223....2	....	STRUT LINKAGE	30..	539 976979....4	....	NUT ¾-16 HEX NYLOC
9..	539 109693....4	....	LIFT CHAIN-3 LINK	31..	539 976941....4	....	HCS ¾-16 x 1¼
10..	539 101175....4	....	HCS 7/16-14 x 1½	32..	539 200282....3	....	NUT ¾-16 HEX JAM NYLOC
11..	539 108073....4	....	HCS 7/16-14 x 1¾	33..	539 101341....1	....	HCS ¾-16 x 3
12..	539 102582....8	....	NUT 7/16-14 HEX WHIZ LK	34..	539 105059....1	....	LANYARD
13..	539 132019....8	....	NUT 7/16-14 HEX WHIZ LK	35..	539 131791....1	....	MOUNT, SPRING
14..	539 131853....1	....	BELLCRANK, RR, RT	36..	539 131792....1	....	TAB, SPRING
15..	539 131566....1	....	LATCH, TRANSPORT	37..	539 112896....1	....	J-BOLT
16..	539 131850....1	....	HEIGHT, ADJUST, DECK	38..	539 102642....1	....	SPRING, DECK BELTS
17..	539 131860....1	....	PIVOT, LATCH, TRANSPORT	39..	539 990717....1	....	NUT 5/16-18 HEX NYLOC
18..	539 131861....1	....	SPACER, .3	40..	539 107475....1	....	BOLT 5/16-18 x ¾ THD FRM
19..	539 132182....1	....	PIN, ½ x 1½, DETENT RING	41..	539 132851....1	....	GRIP
20..	539 991043..10	....	BUSHING .625	42..	539 132017....2	....	MOUNT, STRUT
21..	539 990250....2	....	WASHER, SAE	43..	539 132734....1	....	SPRING, TORSION
22..	539 115501....6	....	PIN, COTTER 1¾				

# 52" DECK



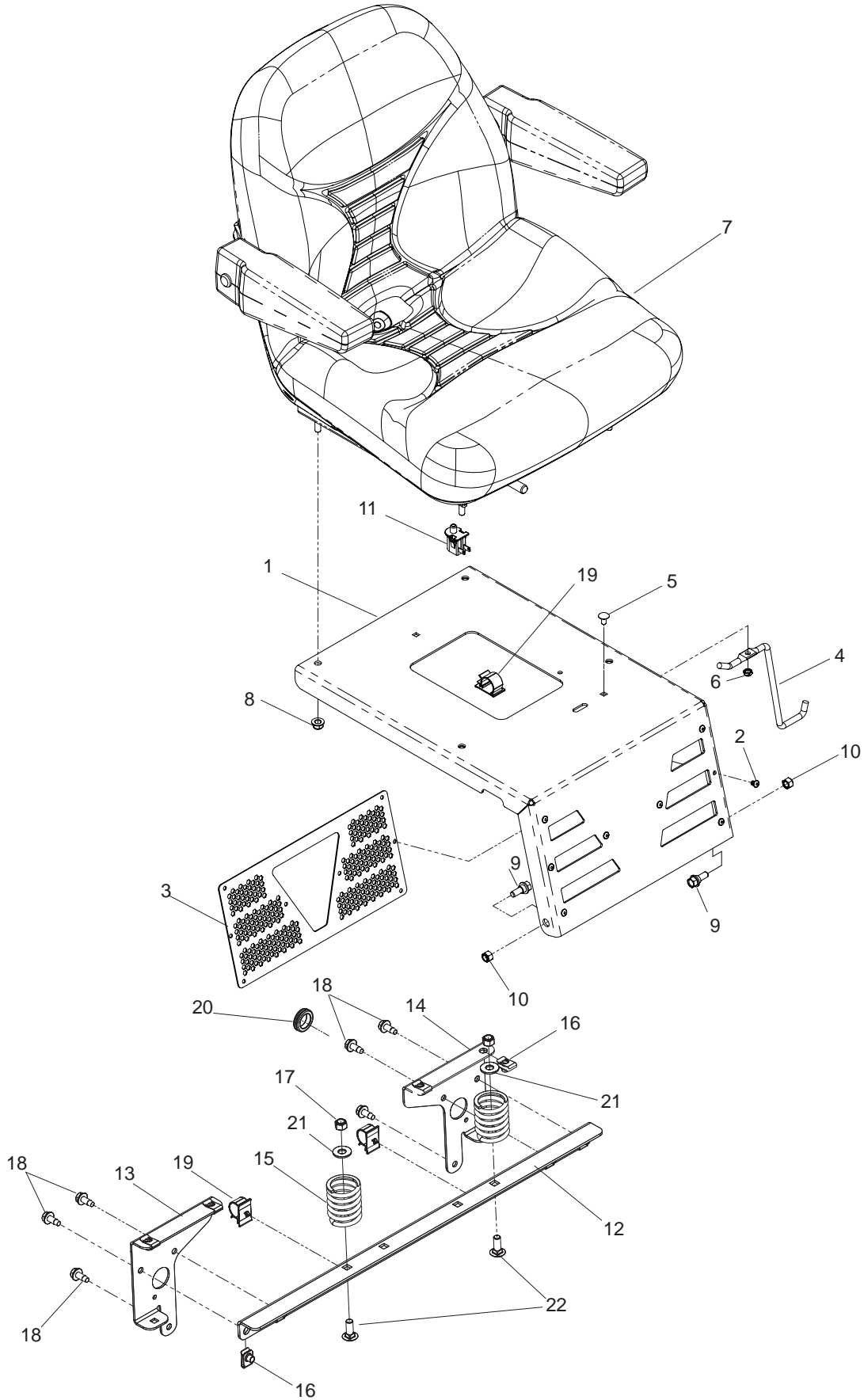
# 52" DECK

---

ITEM	PART NO.	QTY.	DESCRIPTION	ITEM	PART NO.	QTY.	DESCRIPTION
1..	539 132746....	1	.... DECK 52" W/DECALS	25..	539 110733....	1	.... DISCHARGE CHUTE, 52"
2..	539 112170....	3	.... HOUSING ASSEMBLY	26..	539 110735....	1	.... SPRING, TORSION
3..	539 107520....	3	.... WASHER-SPACER	27..	539 990692..	10	.... WASHER <sup>5</sup> / <sub>16</sub> STD FLT
4..	539 107630..	12	.... SCREW, WASHER HEAD	28..	539 110736....	1	.... PIN, CLEVIS <sup>5</sup> / <sub>16</sub>
5..	539 112171....	3	.... PULLEY	29..	539 990209....	8	.... HCS <sup>5</sup> / <sub>16</sub> -18 x 1
6..	539 107590....	3	.... NUT <sup>9</sup> / <sub>16</sub> TOP CNTRLK	30..	539 990187....	8	.... WASHER <sup>5</sup> / <sub>16</sub> SLW
7..	539 112079....	3	.... BLADE, 18"-EZ	31..	539 112417....	1	.... PLATE, CONFINEMENT
8..	539 107522....	3	.... BOLT <sup>7</sup> / <sub>16</sub> BLADE	32..	539 990799....	2	.... RHSNB <sup>5</sup> / <sub>16</sub> -18 x <sup>5</sup> / <sub>8</sub>
9..	539 107610....	2	.... WHEEL, GAUGE	33..	539 990717....	2	.... NUT <sup>5</sup> / <sub>16</sub> -18 HEX NYLOC
10..	539 107608....	2	.... BOLT, SHOULDER	34..	539 131857....	2	.... PITCH, ADJUST, RT
11..	539 976979....	6	.... NUT <sup>3</sup> / <sub>8</sub> -16 HEX NYLOC	35..	539 131858....	2	.... PITCH, ADJUST, LT
12..	532 176066....	1	.... ROLLER, NOSE, 48"	36..	539 131859....	2	.... TRUNION, PITCH
13..	539 107613....	1	.... ROD, ROLLER, NOSE	37..	539 108396....	2	.... HCS <sup>5</sup> / <sub>16</sub> -18 x 2 <sup>1</sup> / <sub>2</sub> TPBLT
14..	539 990365....	2	.... PIN, COTTER <sup>1</sup> / <sub>8</sub> x <sup>3</sup> / <sub>4</sub>	38..	539 990196....	2	.... NUT <sup>5</sup> / <sub>16</sub> -18 HEX
15..	539 112169....	2	.... BUSHING, IDLER	39..	539 990563....	2	.... HCS <sup>3</sup> / <sub>8</sub> -16 x 1
16..	539 103303....	2	.... PAD, PAINTED	40..	539 112198....	1	.... ARM, IDLER
17..	539 132728....	3	.... PULLEY, IDLER	41..	539 101331....	1	.... NUT <sup>1</sup> / <sub>2</sub> HEX NYLOC
18..	539 114557....	1	.... V-BELT	42..	539 976998....	1	.... ZERK
19..	539 101341....	2	.... HCS <sup>3</sup> / <sub>8</sub> -16 x 3	43..	539 990582....	1	.... HCS <sup>3</sup> / <sub>8</sub> -16 x 1 WHIZLK
20..	539 990517....	2	.... WASHER, <sup>3</sup> / <sub>8</sub> FLAT STD	44..	539 103427....	1	.... BUSHING, PIVOT
21..	539 103256....	1	.... SPRING	45..	539 102243....	1	.... WASHER, SUPPORT
22..	539 112242....	1	.... BELT SHIELD, RH	46..	539 103433....	1	.... HCS <sup>1</sup> / <sub>2</sub> -13 x 3 <sup>1</sup> / <sub>4</sub>
23..	539 104763....	8	.... RETAINER, U TYPE	47..	539 990550....	1	.... WASHER <sup>1</sup> / <sub>2</sub> STD FLT
24..	539 112244....	1	.... BELT SHIELD, LH	48..	539 112050....	1	.... BEARING, BALL



# SEAT

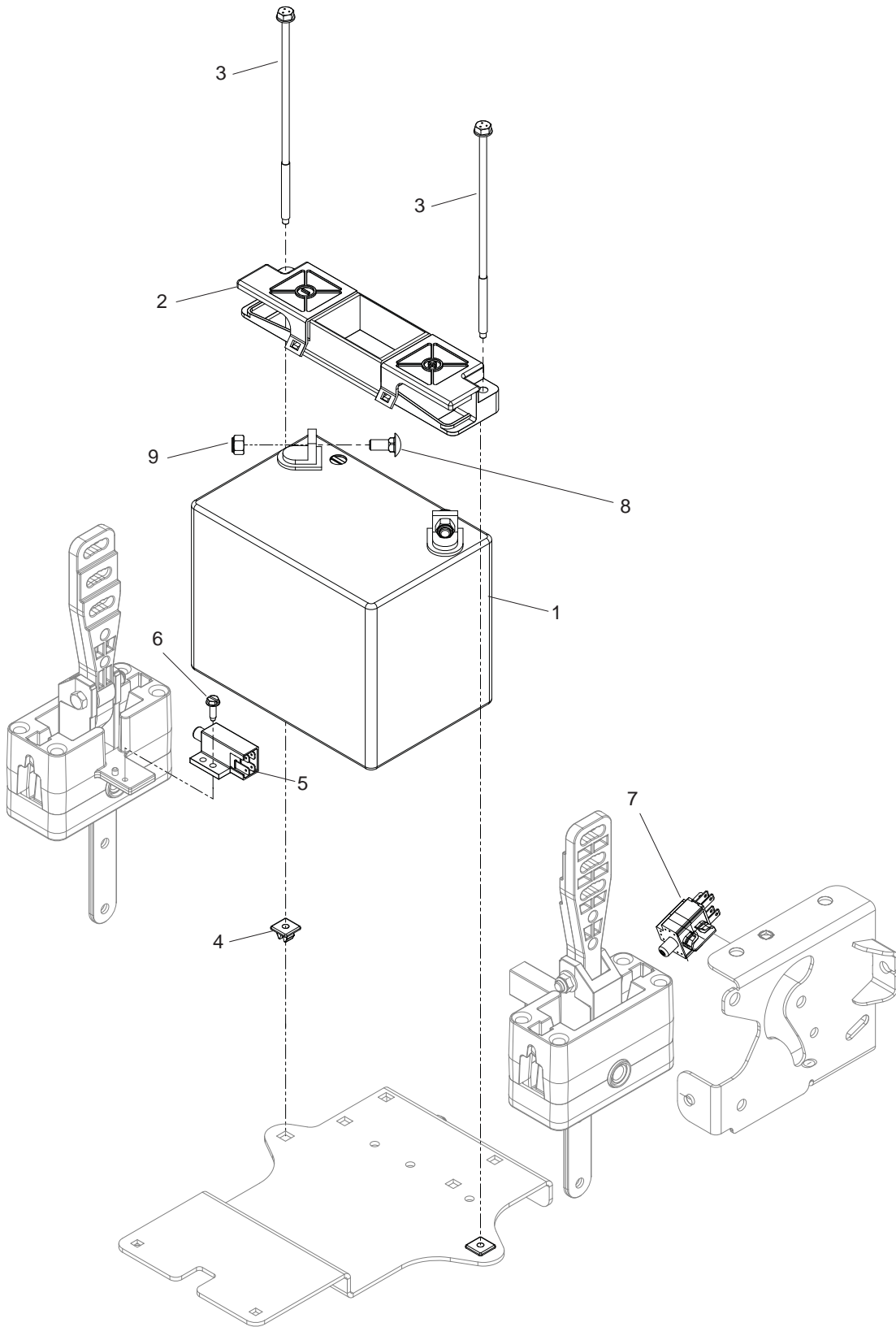


# SEAT

---

ITEM	PART NO.	QTY.	DESCRIPTION	ITEM	PART NO.	QTY.	DESCRIPTION
1..	539 132745....	1	.... MOUNT, SEAT W/DECALS	12..	539 131656....	1	.... SUPPORT, SEAT
2..	539 132894....	8	.... RIVET, <sup>3</sup> / <sub>16</sub> , GRIP	13..	539 131778....	1	.... SUPPORT, LT
3..	539 131763....	1	.... PANEL, HEX	14..	539 131779....	1	.... SUPPORT, RT
4..	539 131899....	1	.... STOP, SEAT, FORWARD	15..	539 110300....	2	.... SPRING, SEAT
5..	539 111777 ....	1	.... RHSSNB <sup>1</sup> / <sub>4</sub> -20 x <sup>1</sup> / <sub>2</sub>	16..	539 104763....	8	.... RETAINER, U TYPE
6..	539 108120....	1	.... NUT <sup>1</sup> / <sub>4</sub> -20 HEX THIN NYLOC	17..	539 976979....	2	.... NUT <sup>3</sup> / <sub>8</sub> -16 HEX NYLOC
7..	539 130873....	1	.... SEAT	18..	539 107475....	6	.... BOLT <sup>5</sup> / <sub>16</sub> -18 x <sup>3</sup> / <sub>4</sub> THD FRM
8..	539 112899....	4	.... NUT <sup>5</sup> / <sub>16</sub> -18 FLANGE NYLOC	19..	539 110815....	3	.... WIRE CLIP, PUSH MOUNT
9..	539 130896....	2	.... BOLT <sup>5</sup> / <sub>16</sub> -18 HEX HD	20..	539 105974....	1	.... RUBBER GROMMET
10..	539 990717....	2	.... NUT <sup>5</sup> / <sub>16</sub> -18 HEX NYLOC	21..	539 990517....	2	.... WASHER, <sup>3</sup> / <sub>8</sub> FLAT STD
11..	539 119741 ....	1	.... SEAT SWITCH	22..	539 990645....	2	.... RHSNB <sup>3</sup> / <sub>8</sub> -16 x 1

# ELECTRICAL

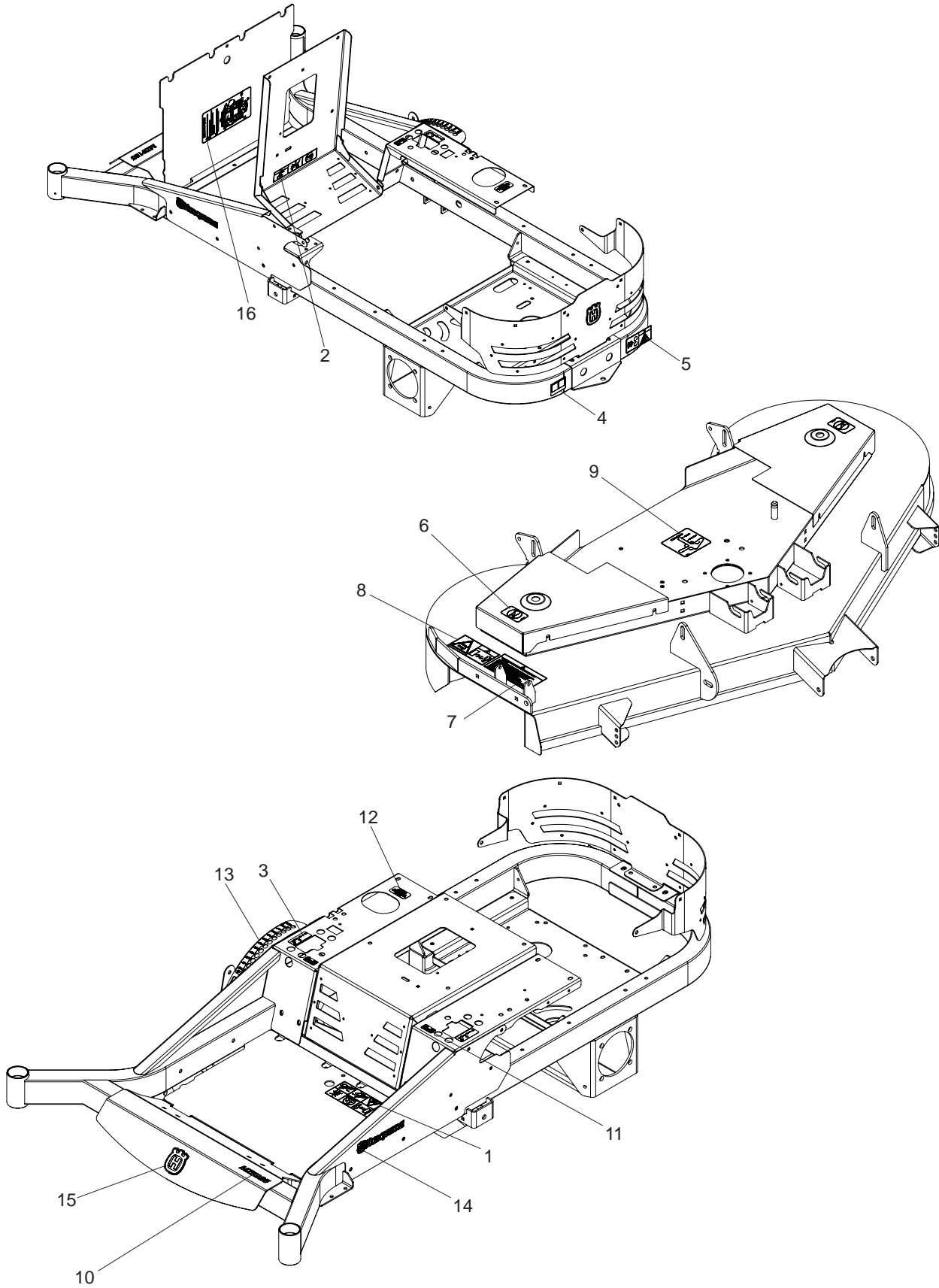


# ELECTRICAL

---

ITEM	PART NO.	QTY.	DESCRIPTION	ITEM	PART NO.	QTY.	DESCRIPTION
1..	539 102436....	1	BATTERY	8..	539 990316....	2	RHSNB $\frac{5}{16}$ -18 x $\frac{3}{4}$
2..	539 107628....	1	BATTERY HOLD DOWN	9..	539 112899....	2	NUT $\frac{5}{16}$ -18 FLANGE NYLOC
3..	539 107632....	2	BOLT, $\frac{1}{4}$ x $7\frac{1}{2}$	NOT SHOWN			
4..	539 107629....	2	NUT $\frac{1}{4}$ PUSH, NYLON	539 132413 ...	1		POSITIVE CABLE, 46"
5..	539 101080....	2	SWITCH, INTERLOCK	539 107645 ...	1		NEGATIVE CABLE, 32"
6..	539 991034....	2	SCREW #10-24 x $\frac{5}{8}$ WSH HD	521 983101 ...	1		MAIN HARNESS
7..	539 113792....	1	SWITCH, BRAKE				

# DECALS



# DECALS

---

ITEM	PART NO.	QTY.	DESCRIPTION	ITEM	PART NO.	QTY.	DESCRIPTION
1..	539 107959	...1	...DECAL, WARNING	10..	539 132025....1	....	DECAL, M5225
2..	539 105745	...1	...DECAL, BATTERY WARNING	11..	539 110974	...2	...DECAL, TRACKING
3..	539 103333	...2	...DECAL, MOTION CONTROL	12..	539 132186	...1	...DECAL, OIL TANK
4..	532 162598....1	....	DECAL, LOAD LIMIT	13..	539 132039	...1	...DECAL, HEIGHT ADJUST
5..	539 105744	...1	...DECAL, DANGER BLT DRIVE	14..	532 422012....2	....	DECAL, HUSQVARNA HOOD
6..	539 105743	...2	...DECAL, NO STEP	15..	532 422011	....2	....DECAL, CROWN
7..	539 130245....1	....	DECAL, DISCHARGE	16..	539 132187	...1	...DECAL, SERVICE
8..	539 105746	...1	...DECAL, SEVERING	NOT SHOWN			
9..	539 112620	...1	...DECAL, BELT ROUTING		539 110279....1	....	DECAL, TICK MARK N1485

# INSTALLATION INSTRUCTIONS

52" MULCH KIT - 965 894001

**IMPORTANT: BEFORE PROCEEDING, PLACE ALL CONTROLS IN THE DISENGAGED OR THE OFF POSITION, REMOVE SPARK PLUG WIRES FROM THE SPARK PLUGS.**



## **WARNING!**

**Blades are sharp. Protect your hands with gloves and/or wrap blades with a heavy cloth when handling.**



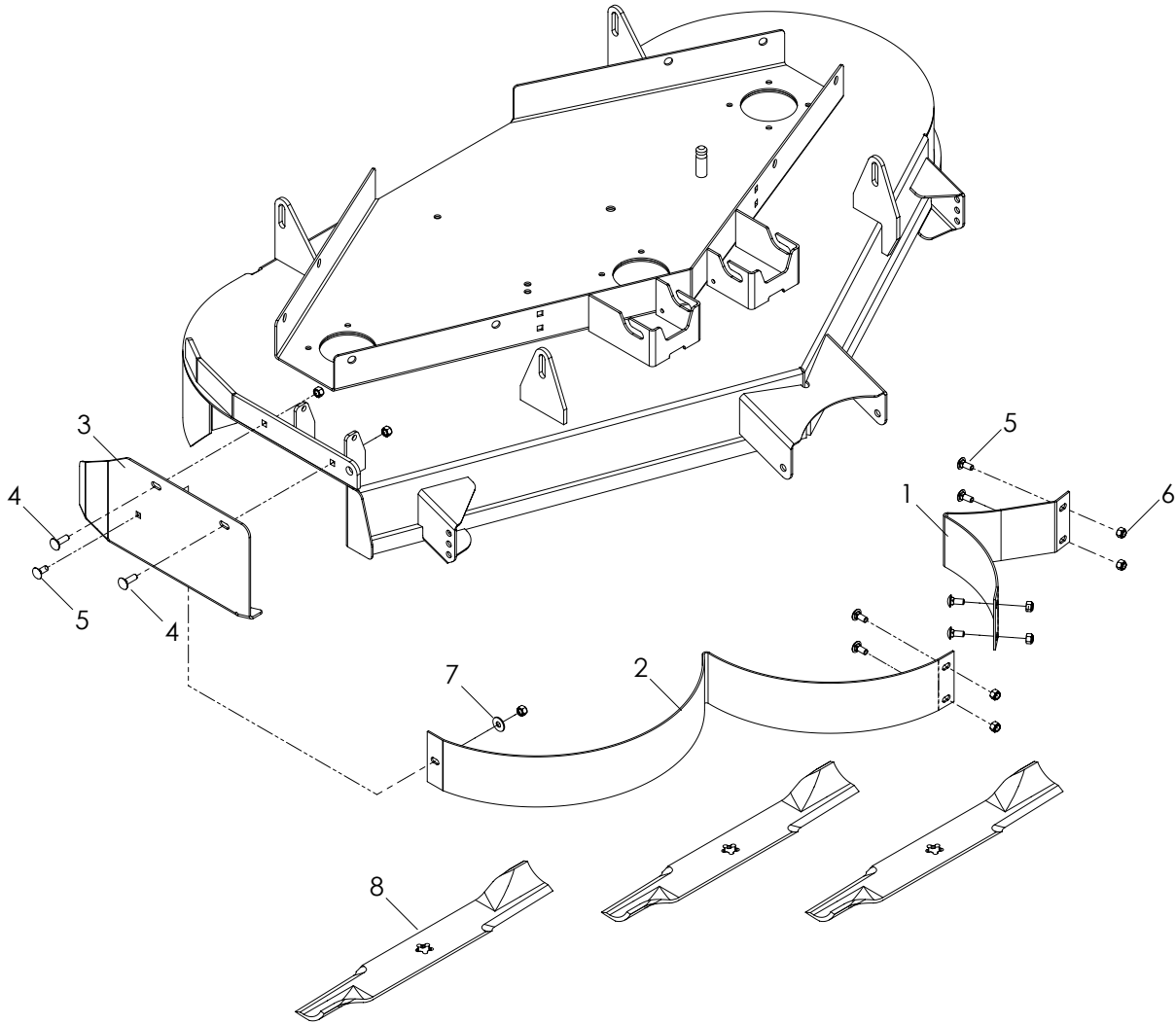
## **Mulching Guidelines**

To ensure acceptable mulching performance:

- The length of grass to be cut in one pass should not exceed  $\frac{1}{3}$  of the total grass height.  
Example: If the grass height is 3", the mower deck cutting height should be set at less than 2".
- Ground speed should normally be reduced to allow clippings to be finely mulched.
- Engine RPM should be set at maximum.
- Blades must be kept sharp.
- The underside of deck should be cleaned out often to prevent grass accumulation.
- Conditions must be dry. Wet grass does not mulch well and grass accumulates under deck.

1. Block the front of the mower up to give access to the underside of the front deck. Carefully remove the cutting blades, retaining the hardware. Clean any grass out from underneath the deck.
2. Remove the two baffle sections from the kit. Using hardware provided, bolt the sections together. See parts illustration on next page for orientation of hardware.
3. With the discharge chute up and the two sections bolted together, place the baffle up under the deck and install with hardware provided. See parts illustration on next page for orientation of hardware.
4. Using hardware provided, fasten the mulch cap to the deck and baffle.
5. Install the kit mulching blades using the existing hardware (torque to 90 ft./lbs. - 122 Nm). Rotate the blades by hand and check for clearance of all baffles.
6. Make sure all hardware is tight.
7. Remove blocks and return the mower to its normal position.

# PARTS LIST



ITEM	PART NO.	QTY.	DESCRIPTION
1	539 112421	1	BAFFLE, MULCH, LEFT
2	539 112435	1	BAFFLE, MULCH, RIGHT
3	539 112344	1	CAP, MULCH, 52
4	539 990208	2	RHSNB $\frac{5}{16}$ -18 x 1 GR5

ITEM	PART NO.	QTY.	DESCRIPTION
5	539 990316	7	RHSNB $\frac{5}{16}$ -18 X $\frac{3}{4}$ GR5
6	539 990717	9	NUT $\frac{5}{16}$ -18 NYLOC
7	539 990692	1	WASHER $\frac{5}{16}$
8	521 981501	3	BLADE, 18" GATOR