

# **WB 48 Se** (only AUS, NZ, SA)

**Spare parts**

**Ersatzteile**

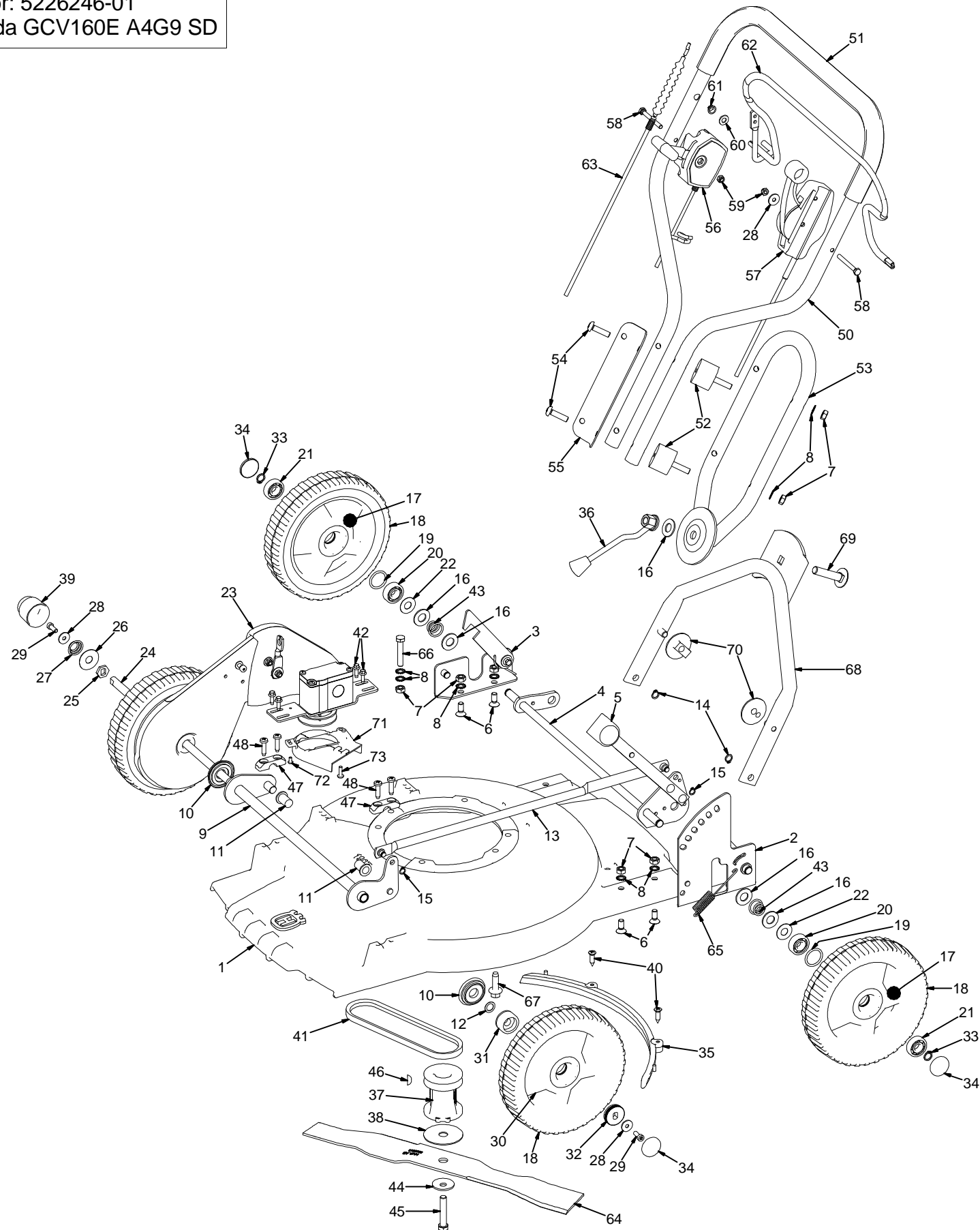
**Pièces détachées**

**Reserve onderdelen**

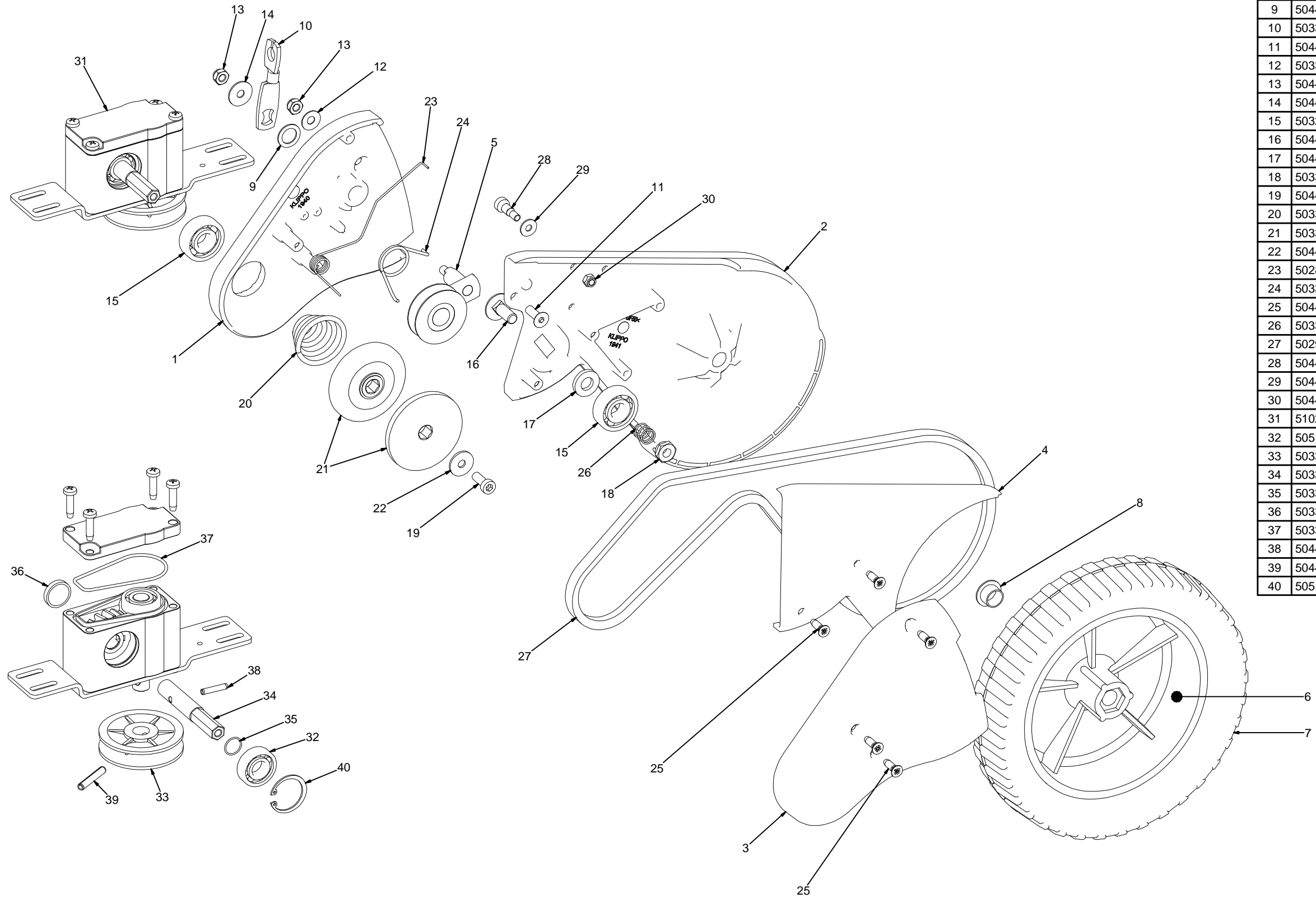
**Repuestos**

**Reservdelar**

Motor: 5226246-01  
Honda GCV160E A4G9 SD



Pos	Art.number	Description	Pos	Art.number	Description
1	5224322-01	COVER 48, ORANGE	61	5033209-01	LOOP BUSHING
2	5032490-02	HANDLE HOLDER LEFT, ORANGE	62	5033111-02	CONTROL BAR, ORANGE
3	5032658-02	HANDLE HOLDER RIGHT, ORANGE	63	5033112-01	BRAKE WIRE
4	5032580-01	REAR SHAFT	64	5028813-01	MULCHER BLADE 48
5	5044647-01	KNOB, BLACK	65	5032576-01	TENSION SPRING
6	5044570-01	SCREW MFS M8X18 FZ	66	5044662-01	SCREW M6S M8X45 FZ
7	5044572-01	NUT M6M M8 FZ	67	5028829-01	SCREW DG-93x30Z FZ
8	5044580-01	LOCK WASHER 8.4 FZ	68	5032838-01	HANDLE LOWER
9	5032692-01	TUBULAR SHAFT 53	69	5044566-01	WAGON BOLT M12x55
10	5044636-01	TUBULAR SHAFT BUSHING	70	5044645-02	ADJUSTING WHEEL, ORANGE
11	5028981-02	CASING, ORANGE	71	5225463-01	BELT GUARD
12	5044598-01	WASHER 18x12x0.3 FZ	72	5226356-01	SCREW MRT-TT M4X8 FZ
13	5032495-02	HEIGHT ADJUST BAR, ORANGE	73	5226357-01	SCREW MRT M5X16 FZ
14	5044582-01	CLAMP RING SGA 10X1			
15	5044581-01	CLAMP RING SGA 8X0.8			
16	5044573-01	WASHER SRB 28x14x2 FZ			
17	5032754-02	FREE WHEEL, SILVER			
18	5101096-01	TYRE			
19	5044618-01	SPACER			
20	5032429-01	BALL BEARING < 12/32x10			
21	5028827-01	BALL BEARING < 12/32x9			
22	5044576-01	WASHER 27x12,2x0.5 FZ			
23	5033299-02	GEAR BOX			
24	5032718-01	DRIVE SHAFT 48			
25	5044613-01	DRIVER			
26	5044609-01	WASHER 34,3x12,1x0,7			
27	5033323-01	COMPRESSION SPRING			
28	5044599-01	WASHER 19x6x1.5 FZ			
29	5044567-01	SCREW M6x16 ESLOCK			
30	5032755-02	DRIVING WHEEL, SILVER			
31	5032764-01	BUSHING, NYLON			
32	5032762-01	BUSHING, STEEL			
33	5044583-01	CLAMP RING SGA 12X1.5			
34	5032751-01	HUB CAP			
35	5032430-01	MULCHER WALL 48			
36	5032983-01	BALL HANDLE			
37	5032592-01	BLADE BRACKET			
38	5032594-01	FIBRE WASHER			
39	5044651-01	CENTER LID			
40	5044565-01	SCREW KFTS 6.3X25 FZ			
41	5029453-01	V-BELT			
42	5044676-01	SCREW M6SF-TT M5X16 FZ			
43	5033330-01	COMPRESSION SPRING			
44	5033325-01	CUP SPRING			
45	5044666-01	SCREW U6S UNF3/8X50 FZ			
46	5044605-01	WOODRUF WEDGE			
47	5044638-02	FRONT SHAFT HOLDER, ORANGE			
48	5044571-01	SCREW RTS 6.3X25 FZ			
49	5033163-02	HANDLE UPPER COMPL, GREY			
50	5029064-02	HANDLE UPPER, GREY			
51	5230528-01	HANDLE GRIP, BLACK			
52	5033125-01	VIBRATION ABSORBER			
53	5029035-02	HANDLE LOWER, GREY			
54	5044615-01	SCREW M8X30 ESLOCK			
55	5033117-02	PLATE FOR HANDLE, GREY			
56	5033130-01	THROTTLE CONTROL			
57	5033098-01	DRIVE CONTROL			
58	5028823-01	SCREW M6S M6x55 FZ			
59	5044561-01	LOCK NUT M6 NYLOCK FZ			
60	5044592-01	WASHER NB 16X8X1,5 FZ			



Pos	Art.number	Description
1	5028799-01	HOUSING BACK
2	5028800-01	HOUSING FRONT
3	5028801-01	HOUSING COVER BACK
4	5028802-01	HOUSING COVER FRONT
5	5033232-01	CLUTCH LEVER COMPL
6	5033174-02	DRIVING WHEEL AL, SILVER
7	5101096-01	TYRE
8	5032771-01	BUSHING
9	5044608-01	WASHER PS 18x12x1 FZ
10	5033227-01	OPERATING ARM
11	5044604-01	SCREW MF6S M6x18 FZ
12	5033240-01	CUP SPRING
13	5044561-01	LOCK NUT M6 NYLOCK FZ
14	5044661-01	WASHER 19x6x1
15	5032429-01	BALL BEARING < 12/32x10
16	5044601-01	WAGON BOLT M8x20 FZ
17	5044606-01	WASHER 20x10x3 FZ
18	5033176-01	COLLAR NUT
19	5044567-01	SCREW M6x16 ESLOCK
20	5033234-01	COMPRESSION SPRING
21	5033295-01	VARIATOR DISC
22	5044599-01	WASHER 19x6x1.5 FZ
23	5028803-01	CONTROL SPRING RIGHT
24	5033266-01	MOMENT SPRING
25	5044600-01	SCREW MFT-TT M5x16 FZ
26	5033187-01	COMPRESSION SPRING
27	5029452-01	V-BELT
28	5044619-01	COLLAR SCREW
29	5044560-01	WASHER NB 13x5x1 FZ
30	5044603-01	LOCK NUT M5 NYLOCK FZ
31	5102122-01	WORM GEAR, ORANGE
32	5051501-01	BALL BEARING < 12/28x8
33	5033301-01	PULLEY
34	5033302-01	AUXIALRY SHAFT
35	5033303-01	O-RING
36	5033304-01	PLUG
37	5033305-01	O-RING
38	5044554-01	DOWEL PIN
39	5044555-01	DOWEL PIN
40	5051502-01	CIRCLIP SgH 27