

R150 SV

Spare parts

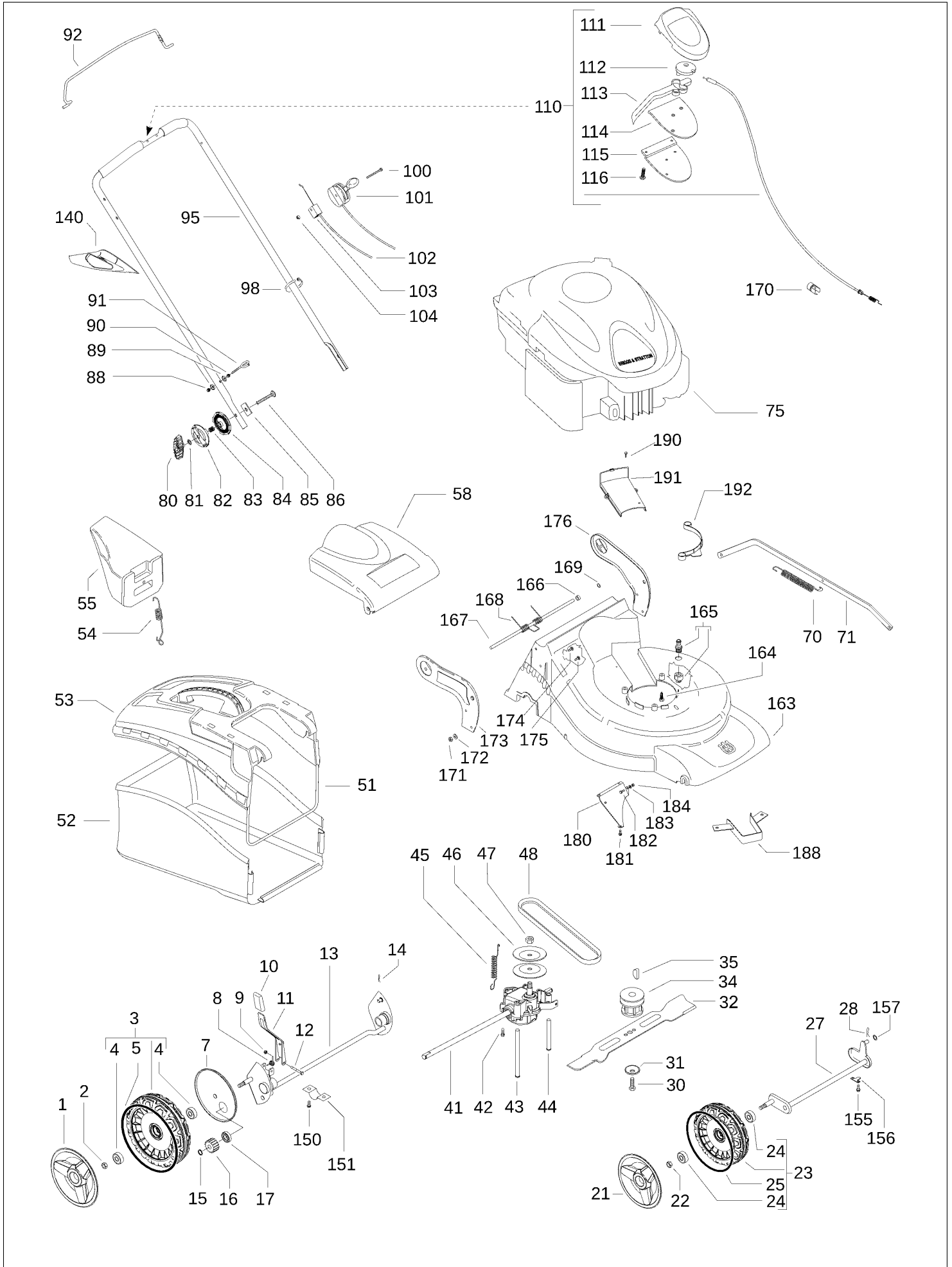
Ersatzteile

Pièces détachées

Reserve onderdelen

Repuestos

Reservdelar



| Item | PN | Description | Qty |
|-----------|---------------------|---|----------|
| 1 | 544 44 39-01 | wheel cover Ø210 | 2 |
| 2 | 504 85 78-01 | nut M8, self locking, flanged | 2 |
| 3 | 502 44 56-01 | wheel assy Ø210 | 2 |
| 4 | 504 54 82-01 | ball bearing | 2 |
| 5 | 544 43 28-01 | o-ring, wheel Ø210 | 2 |
| 7 | 504 82 73-01 | dust shield Ø210 | 2 |
| 8 | 531 21 08-17 | spring, wheel regulator lever | 1 |
| 9 | 531 20 84-92 | nut M5, self locking | 2 |
| 10 | 531 20 79-86 | handle, wheel regulator | 1 |
| 11 | 501 97 99-01 | wheel regulator lever | 1 |
| 12 | 538 23 58-07 | screw M5x45 | 1 |
| 13 | 504 80 01-01 | rear axle | 1 |
| 14 | 531 20 66-53 | cotter pin | 1 |
| 15 | 531 20 87-72 | seeger | 2 |
| 16 | 544 34 23-01 | gear | 2 |
| 17 | 531 20 87-78 | ball bearing | 2 |
| 21 | 544 44 40-01 | wheel cover Ø190 | 1 |
| 22 | 504 85 78-01 | nut M8, self locking, flanged | 2 |
| 23 | 502 44 50-01 | wheel assy Ø190 | 2 |
| 24 | 504 54 82-01 | ball bearing | 2 |
| 25 | 544 43 31-01 | o-ring, wheel Ø190 | 2 |
| 27 | 504 85 65-01 | front axle | 1 |
| 28 | 531 20 66-53 | cotter pin | 1 |
| 30 | 531 20 66-49 | screw, 3/8" | 1 |
| 31 | 531 20 72-37 | spring washer | 1 |
| 32 | 504 11 33-01 | mulching blade | 1 |
| 34 | 531 20 78-48 | blade support | 1 |
| 35 | 505 29 09-01 | key | 1 |
| 41 | 544 42 89-03 | gear box | 1 |
| 42 | 510 03 75-01 | screw 4x16, self threading | 2 |
| 43 | 504 10 32-01 | belt guide | 1 |
| 44 | 544 93 43-01 | belt guide | 1 |
| 45 | 544 93 47-01 | gear box spring | 1 |
| 46 | 504 54 79-01 | pulley plate | 2 |
| 47 | 504 54 80-01 | nut | 2 |
| 48 | 504 03 51-01 | belt Z33 10X825 | 1 |
| 51 | 501 32 24-01 | sack frame | 1 |
| 52 | 531 21 32-11 | sack | 1 |
| 53 | 501 32 21-01 | sack cover | 1 |
| 54 | 531 20 58-31 | spring, mulching plug | 1 |
| 55 | 531 21 32-26 | mulching plug | 1 |
| 58 | 501 32 23-05 | safety flap | 1 |
| 70 | 531 20 57-15 | wheel regulation spring | 1 |
| 71 | 531 21 33-78 | wheel regulation bar | 1 |
| 75 | — | engine, Briggs & Stratton, model number 1006022150 | 1 |
| 80 | 531 20 58-40 | handle | 2 |
| 81 | 531 20 49-22 | washer | 2 |
| 82 | 531 21 14-74 | locking disc, outer | 2 |
| 83 | 531 21 14-76 | spring | 2 |
| 84 | 531 21 14-73 | locking disc, inner | 2 |
| 85 | 531 21 15-81 | plate | 2 |
| 86 | 531 21 14-80 | screw M8x55 | 2 |
| 88 | 531 20 84-91 | nut M6 self | 2 |
| 89 | 531 20 49-61 | washer | 4 |
| 90 | 531 20 71-65 | nut M6 | 2 |

| Item | PN | Description | Qty |
|------------|---------------------|-----------------------------|----------|
| 91 | 531 20 51-69 | starter cable guide | 2 |
| 92 | 544 46 38-01 | brake lever | 1 |
| 95 | 544 91 48-01 | handle | 1 |
| 98 | 531 20 55-81 | binder | 2 |
| 100 | 531 21 35-17 | screw M6x80 | 1 |
| 101 | 531 21 34-91 | accelerator lever and cable | 1 |
| 102 | 531 21 35-22 | brake cable | 1 |
| 103 | 531 20 80-43 | cable support | 1 |
| 104 | 531 20 80-63 | nut M6 | 1 |
| 110 | 544 93 29-03 | EZ control assy | 1 |
| 111 | 532 19 57-61 | cover | 1 |
| 112 | 532 18 73-53 | pulley | 1 |
| 113 | 532 19 00-37 | lever | 1 |
| 114 | 532 19 57-62 | plate | 1 |
| 115 | 532 18 70-97 | holder | 1 |
| 116 | 532 18 16-98 | screw | 5 |
| 140 | 544 89 93-01 | deck scraping tool | 1 |
| 150 | 531 20 73-85 | screw | 4 |
| 151 | 531 20 66-52 | rear axle holder | 2 |
| 155 | 531 20 78-56 | screw | 4 |
| 156 | 531 20 55-36 | front axle holder | 2 |
| 157 | 531 20 49-06 | washer | 1 |
| 163 | 531 21 34-93 | deck | 1 |
| 164 | 531 21 38-45 | screw 3/8 + split washer | 3 |
| 165 | 531 20 58-48 | snap on connector 1/2" | 1 |
| 166 | 531 21 19-66 | spacer | 1 |
| 167 | 531 21 33-44 | safety flap bar | 1 |
| 168 | 501 32 25-01 | spring | 1 |
| 169 | 531 20 76-57 | star washer | 2 |
| 170 | 510 41 73-01 | cable housing | 1 |
| 171 | 531 20 79-82 | nut M8 | 4 |
| 172 | 531 20 79-81 | washer | 4 |
| 173 | 531 21 20-46 | handle support, right | 1 |
| 174 | 531 20 57-41 | screw M8x16 | 3 |
| 175 | 531 20 49-21 | screw M8x25 | 1 |
| 176 | 531 21 33-66 | handle support, left | 1 |
| 180 | 501 96 60-01 | deflector | 1 |
| 181 | 531 20 78-56 | screw | 2 |
| 182 | 531 20 78-38 | screw M5x16 | 1 |
| 183 | 531 20 66-66 | washer | 1 |
| 184 | 531 20 84-92 | nut M5, self locking | 1 |
| 188 | 544 46 86-01 | belt guide | 1 |
| 190 | 531 20 78-56 | screw | 2 |
| 191 | 531 21 32-25 | belt cover | 1 |
| 192 | 531 20 63-08 | cover | 1 |