

# T25

**Spare parts**

**Ersatzteile**

**Pièces détachées**

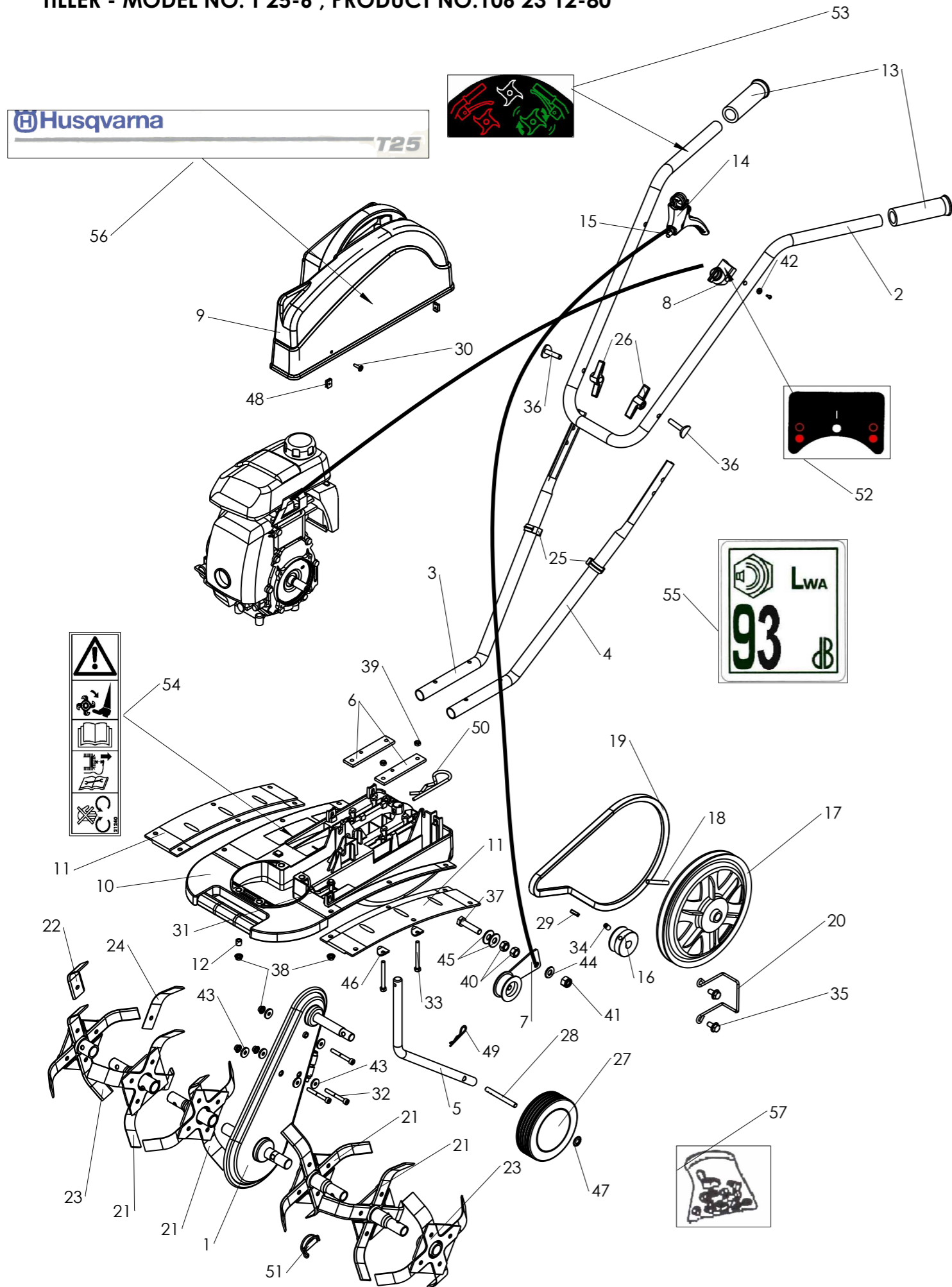
**Reserve onderdelen**

**Repuestos**

**Reservdelar**

## REPAIR PARTS

TILLER - MODEL NO. T 25-6 , PRODUCT NO.106 23 12-80



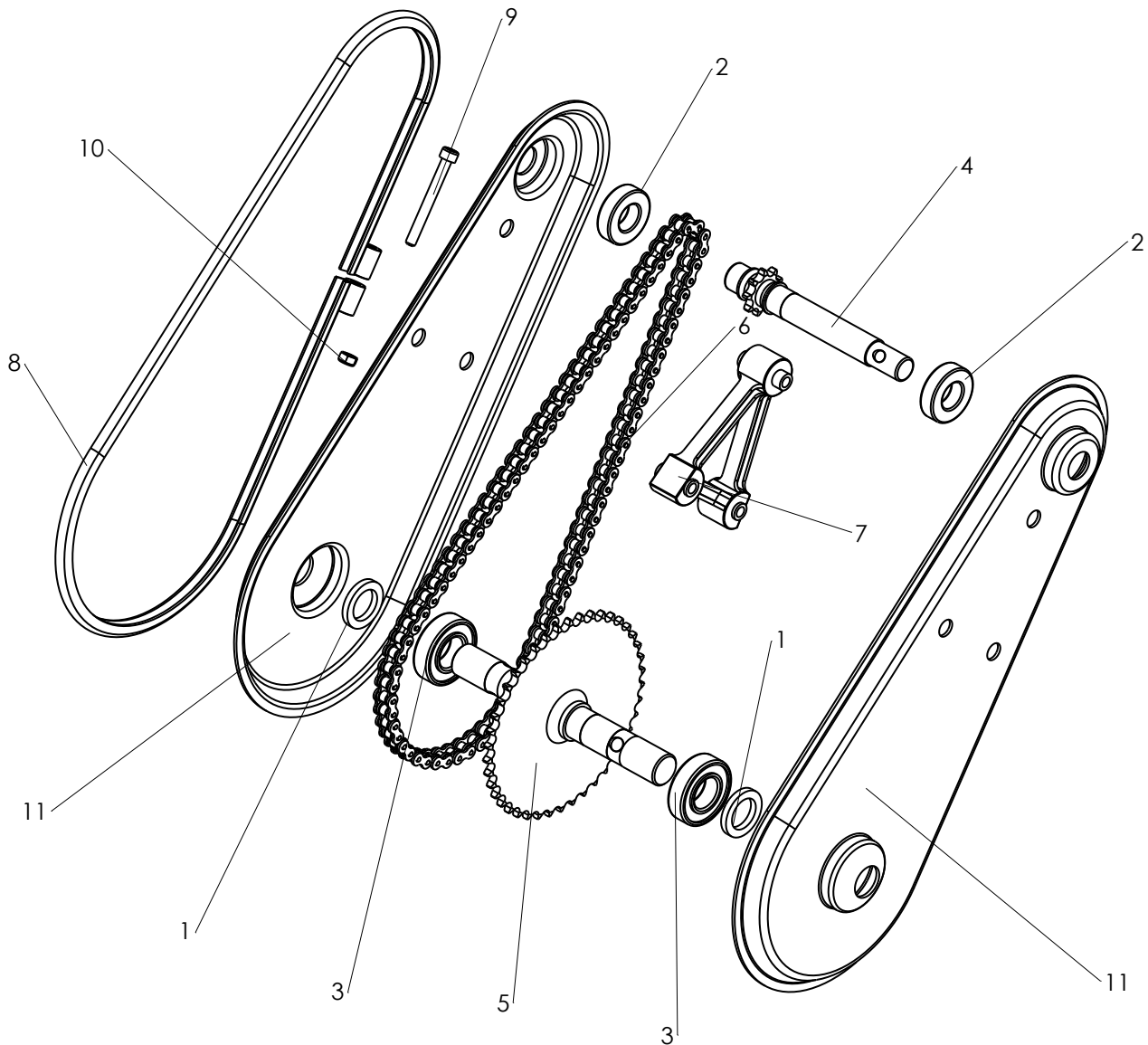
## REPAIR PARTS

TILLER - MODEL NO. T 25-6 , PRODUCT NO.106 23 12-80

KEY NO.	PART NO.	DESCRIPTION	DESIGNATION	QTY QTE
1	531 00 84-31	Complete casing, flanged (Black)	Carter complet à jonc (Noir)	1
2	531 00 84-32	Black handelbars (top part)	Guidon noir (partie haute)	1
3	531 00 84-33	Black handelbars (bottom right-hand part)	Guidon noir (partie droite basse)	1
4	531 00 84-34	Black handelbars (bottom left-hand part)	Guidon noir (partie gauche basse)	1
5	531 00 84-37	Black spur	Eperon noir	1
6	531 00 84-40	Handelbar fixing plate	Platine fixation guidon	2
7	531 00 84-41	Clutch lever	Levier embrayage	1
8	531 00 85-58	Switch engine cut-off Honda (GX)	Switch arrêt moteur Honda (GX)	1
9	531 00 84-44	Orange RAL2009 belt cowl	Capot courroie orange RAL2009	1
10	531 00 84-45	Chassis (Black)	Châssis (Noir)	1
11	531 00 84 46	Black Guard	Protection noir	2
12	531 00 84-53	Spacer of motor	Entretoise moteur 6.5x10x9.8	4
13	544 20 66-01	Hand side grip	Poignée Ø22x120	2
14	501 96 34-01	Lever LAB N2 B01 Ø22 stroke 17.5	Levier LAB N2 B01 Ø22 course 17.5	1
15	501 96 35-01	Clutch cable	Câble embr Mécabêche	1
16	531 00 84-56	Motor pulley gear (Shaft Ø15)	poulie moteur arbre Ø15	1
17	519 65 30-60	Transmission pulley	Poulie transmission	1
18	519 65 30-67	Pulley pin shaft	Axe fixation poulie	1
19	531 00 84-57	Belt (GXH 50)	Courroie (GXH 50)	1
20	531 00 84-61	Drive-belt guide gear (GXH 50)	Guide courroie (GXH 50)	1
21	531 00 84-58	Rotating blade 30x3 Ø240	Fraise départ 30x3 Ø240	4
22	531 00 84-59	Inside blade 30x3 D240	Couteau interieur 30x3 D240	1
23	531 00 84-60	Disk blade 30x3 Ø240	Fraise disque 30x3 Ø240	2
24	531 00 85-63	Outside blade 30x3 D240	Couteau exterieur 30x3, D240	1
25	519 00 64-17	Collar	Collier serrage câble	2
26	531 00 84-62	Black handlebar tightening lever	Poignée de serrage guidon noire	2
27	531 00 85-69	Transport wheel Ø130	Roue Ø130 ales 8 Noir	1
28	531 00 85-62	Axle of travelling wheel	Axe roue de transport	1
29	531 00 83-95	Key 5x5x18	Clavette 5x5x18	1
30	519 65 34-26	Screw 4.2x19	Vis Tôle 4.2x19	4
31	519 65 34-35	Vis HM 6x16 z notched shoulder	Vis HM 6x16 z emb cr	6
32	519 65 30-10	Screw CHc M6x50	Vis CHC M6x50	3
33	519 65 31-13	Screw HM6x60z	Vis HM6x60z	4
34	728 69 23-00	Screw ST HC M8x16	Vis ST HC M8x16	1
35	531 00 82-02	Screw H M8x16 z notched shoulder	Vis HM 8x16 z emb cr	2
36	531 00 84-73	Screw M8x40 Z forged head bolt	VIS M8x40 Z tête emboutie	2
37	531 00 84-70	Screw H M10x45 z	Vis H M10x45 z	1
38	519 65 34-32	Nut H M6 z notched shoulder	Ecrou HM 6 z emb cr	13
39	732 26 16-01	Blocking nut M 6 Z	Ecrou frein M 6 Z	4
40	519 65 34-56	Nut HM 10z	Ecrou HM 10z	2
41	519 65 34-58	Blocking nut M 10 Z	Ecrou frein M 10 Z	1
42	531 00 85-39	Washer M 3.2x10x1 Z	Rondelle M 3.2x10x1 Z	1
43	531 00 83-90	Washer 6.3x19x2.5 Z	Rondelle 6.3x19x2.5 Z	6
44	734 11 72-01	Washer M 10x22x2 Z	Rondelle M 10x22x2 Z	2
45	531 00 84-66	Washer M 10x27x2 Z	Rondelle M 10x27x2 Z	2
46	531 00 84-65	'6' shaped washer Ø22mm	Rondelle spéciale 6 forme Ø22	4
47	519 00 28-60	Starlock washer Ø8	Rondelle Starlock Ø8	1
48	519 65 34-25	Spire nuts 4.2	Clips 4.2	4
49	519 65 12-20	Clip pin beta 2 Z	Goupille Béta 2 Z	1
50	531 00 84-67	Clip pin beta 5 Z	Goupille bêta 5 Z	1
51	519 65 33-60	Clip pin Ø8x32	Goupille clip Ø8x32	6
52	501 96 37-01	On/Off Label	Etiquette Marche/Arrêt	1
53	519 65 30-85	Label "clutch lever"	Etiq. "Embrayage"	1
54	531 00 85-40	Safety label	Etiq. "sécurité"	1
55	501 96 25-01	level noise label	Etiquette niveau de bruit	1
56	531 00 94-08	label "T 25"	Etiq. "T 25"	1
57	501 96 36-01	Bag of screws mécabêche	Pochette visserie mécabêche	1

## REPAIR PARTS

TILLER - MODEL NO. T 25-6, PRODUCT NO.106 23 12-80



KEY NO.	PART NO.	DESCRIPTION	DESIGNATION	QTY QTE
1	531 00 84-49	Joint	Joint feutre carter	2
2	531 00 84-47	Ball bearing 6003 2RS	Roulement 6003 2RS	2
3	519 65 31-90	Ball bearing 6004 2 RS	Roulement 6004 2 RS	2
4	531 00 84-52	Primary shaft	Arbre primaire Mécabeche	1
5	531 00 84-48	Blade shaft	Arbre de travail 42 dts x9.52	1
6	531 00 84-51	Chain 9.52 (84 links)	Chaine 9.52 (84 maillons)	1
7	531 00 84-50	Plastic spacer	Entretoise plastique	1
8	531 00 84-35	Flange (black)	Jonc noir	1
9	501 96 38-01	Screw CHC M6x55 z	Vis CHC M6x55 z	1
10	732 26 16-01	Blocking nut M 6 Z	Ecrou frein M 6 Z	1
11	531 00 84-36	Transmission housing (Black)	Joue carter (noir)	2