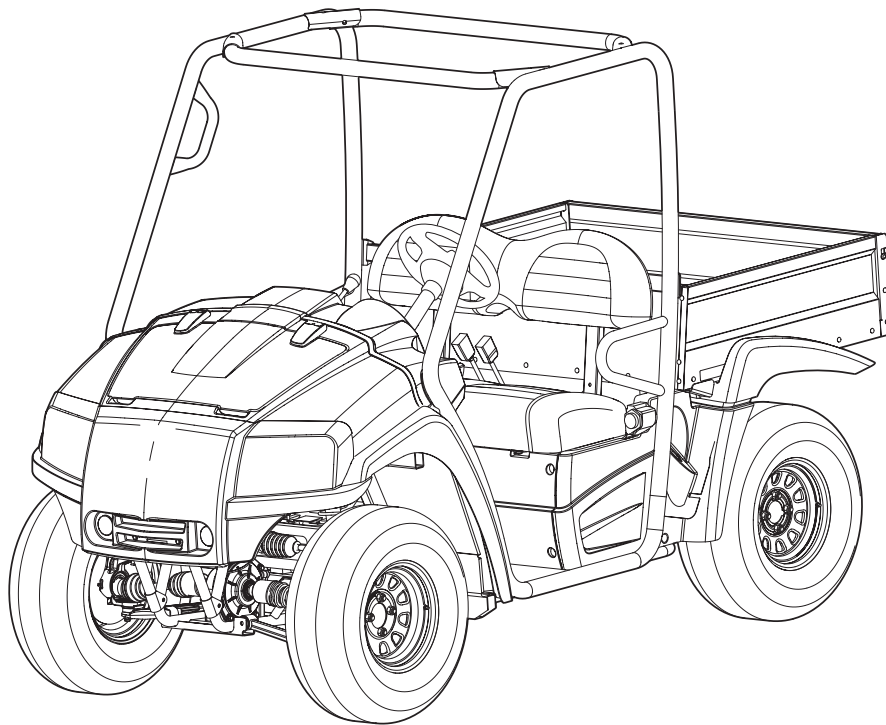




# 2009 HUV 4214, HUV 4414, and HUV 4414-XP Illustrated Parts List



## Gasoline Utility Vehicles

Manual Number 525888503

Edition Code 0309A00000

# USING THE ILLUSTRATED PARTS LIST

---

## **⚠ WARNING**

- **This manual is to be used only for identification and ordering of service parts. Be sure to read and use the maintenance and service manual before attempting any vehicle repairs.**

This manual covers HUV 4214, HUV 4414 and HUV 4414-XP gasoline vehicles.

The manual is divided into sections. Note that there are two or three flags on the outside edge of each page. The first flag contains the section number of which that page is a part. The other flag (or flags) contains the letter D, E, or G, signifying that the page pertains to the diesel, electric, or gasoline vehicles only.

Use the Table of Contents to find the sections and pages that contain the parts and assemblies you seek. The Table of Contents lists section numbers, and under them, the individual page titles and numbers to be found in that section. The index can be used to find specific parts and assemblies. The index is divided into numerical and alphabetical listings with the page numbers in italic text.

There is a two-page spread for each individual page title in the Table of Contents. On the left-hand page is an illustration showing the parts in their relative positions; the parts are each tagged with an item number in a balloon. The right-hand page is the parts list page, and gives the page title at the top, then the item numbers (corresponding to the numbers on the illustration), part descriptions, and quantity of parts used.

Note that a part description may be indented. This indention corresponds to a parts assembly level indicated by the numbers 1, 2, 3, and 4 at the top left corner of the parts description area of the parts list page. A part that is indented to *level 2* is a component of the *level 1* part (assembly) that it is listed under. A *level 3* part is a component of the *level 2* part that it is listed under, and a *level 4* part is a component of the *level 3* part preceding it. In each case, the part quantity given for a level 2, 3, or 4 part is the quantity used per next higher level assembly of which it is a component. A part that is not indented is a *level 1* part. This means that the quantity given is the quantity used per the portion of the vehicle illustrated on that particular spread.

## **HOW TO ORDER PARTS**

Replacement parts and accessories can be obtained from our network of authorized dealers and distributors. For the name and address of the Husqvarna representative nearest you, logon to our web site at [www.usa.husqvarna.com](http://www.usa.husqvarna.com). If you would prefer to write to us, direct your letter to: Husqvarna, Attention: Marketing Services, 7349 Statesville Rd., Charlotte, NC 28269 USA. Your local authorized Husqvarna representative can also provide technical advice, parts, and service manuals.



Husqvarna Professional Products, Inc.  
7349 Statesville Rd.  
Charlotte, NC 28269  
USA  
[www.husqvarna.com](http://www.husqvarna.com)

**NOTE:** *This illustrated parts list represents the most current information at the time of publication. Husqvarna is continually working to further improve its vehicles and other products. These improvements may affect the parts used to service the vehicle. Any modification and/or significant change in specifications will be forwarded to all Husqvarna distributors/dealers and will, when applicable, appear in future editions of this illustrated parts list.*

*Husqvarna reserves the right to change specifications and designs at any time without notice and without the obligation of making changes to units previously sold.*

# CONTENTS

---

## SECTION 1 – BODY AND TRIM

---

Tube Brush Guard .....	1-3
Brush Guard .....	1-5
Receiver Hitch – Front .....	1-7
Receiver Hitch – Rear .....	1-9
Fascia .....	1-11
Closeout Panels .....	1-13
Floor Plate and Panel .....	1-15
Frame Components .....	1-17
Cowl .....	1-19
Fenders and Rear Body Panels .....	1-21
Taillights .....	1-23
Front Skid Plate .....	1-25
Rear Skid Plate .....	1-27
Dash .....	1-29
Heat Shield .....	1-31
Canopy and Doors .....	1-33
Seat Belts .....	1-35
ROPS .....	1-37
Tilt Bed Hinge and Latch .....	1-39
Headlights .....	1-41
Bench Seats .....	1-43
Box Bed .....	1-45

---

## SECTION 2 – WHEELS AND TIRES

---

Wheels and Tires – Front .....	2-3
Wheels and Tires – Rear .....	2-5

---

## SECTION 3 – DECALS

---

Safety Decals .....	3-3
Safety Decals, Continued .....	3-5
Badging Decals .....	3-7

---

## SECTION 4 – BRAKE SYSTEMS

---

Brake System .....	4-3
Park Brake System .....	4-5
Pedal Group .....	4-7

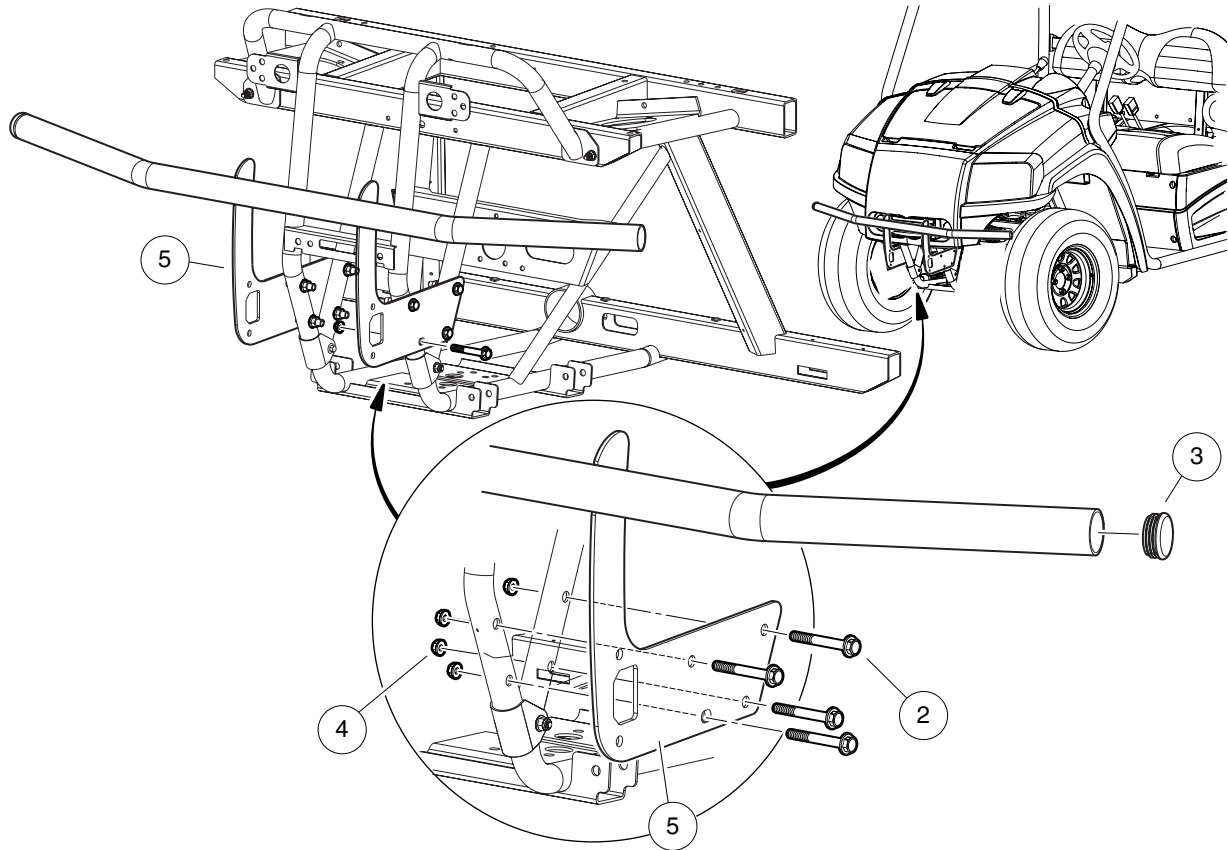


# BODY AND TRIM

---

1

G



000871-001

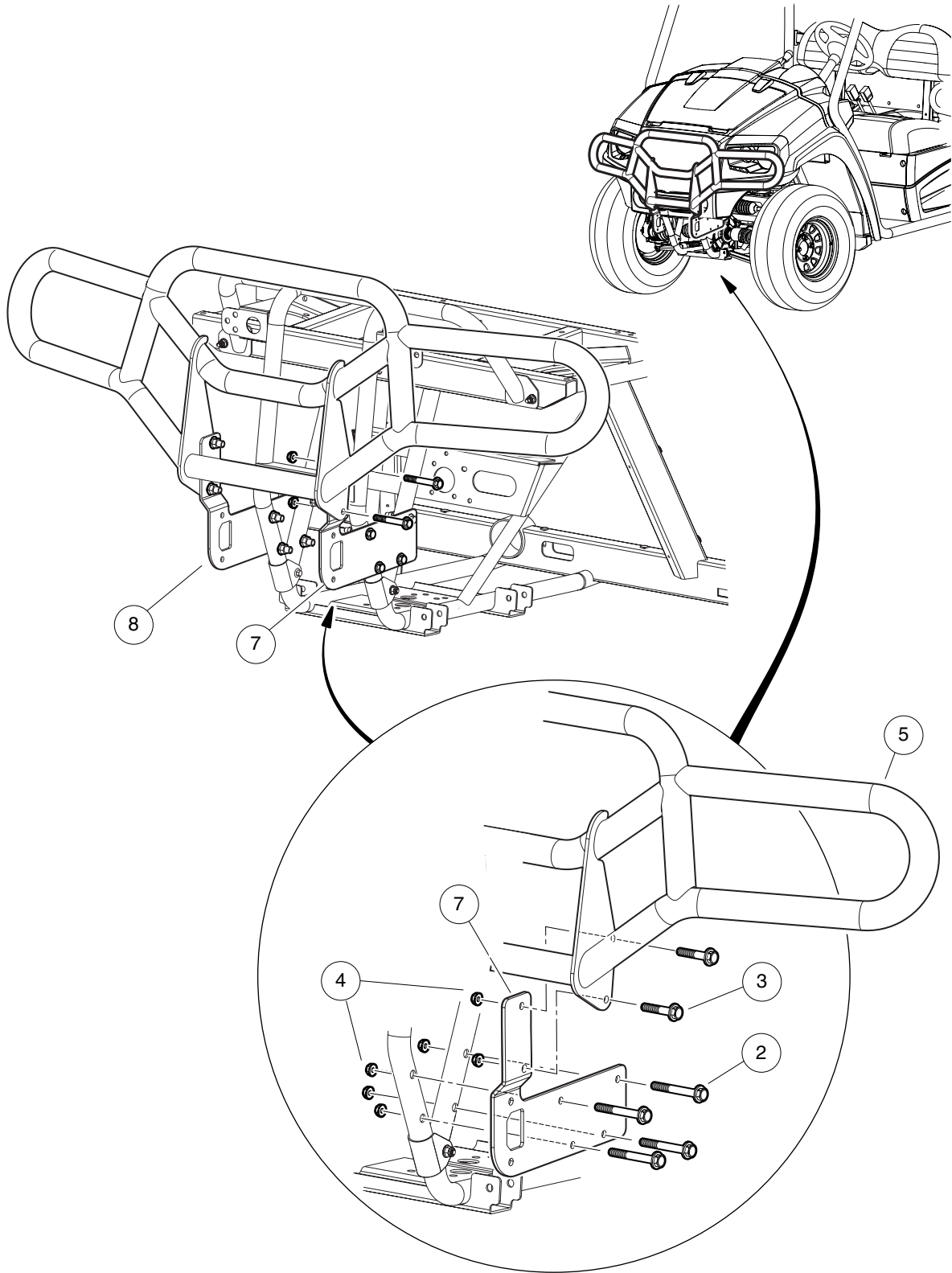
# TUBE BRUSH GUARD

ITEM	PART NO.	DESCRIPTION	QTY
		<b>1 2 3 4</b>	
1	525 76 80-01	Kit, Brshgrd, Tube (includes items 2 through 6) .....	1
2	523 34 59-25	Bolt, Flg, M10x1.5x55, Patch .....	8
3	523 34 59-90	Plug, Tube, Round, 1-3/4" .....	2
4	603 00 33-95	Nut, Flg, M10 X 1.25 Hex Blk .....	8
5	525 76 75-01	Weldment, Brshgrd, Tube .....	1
6	525 77 00-01	Instr- Brshgrd, Tube (not shown) .....	1

**1**

**G**

**1**  
**G**



000871-003

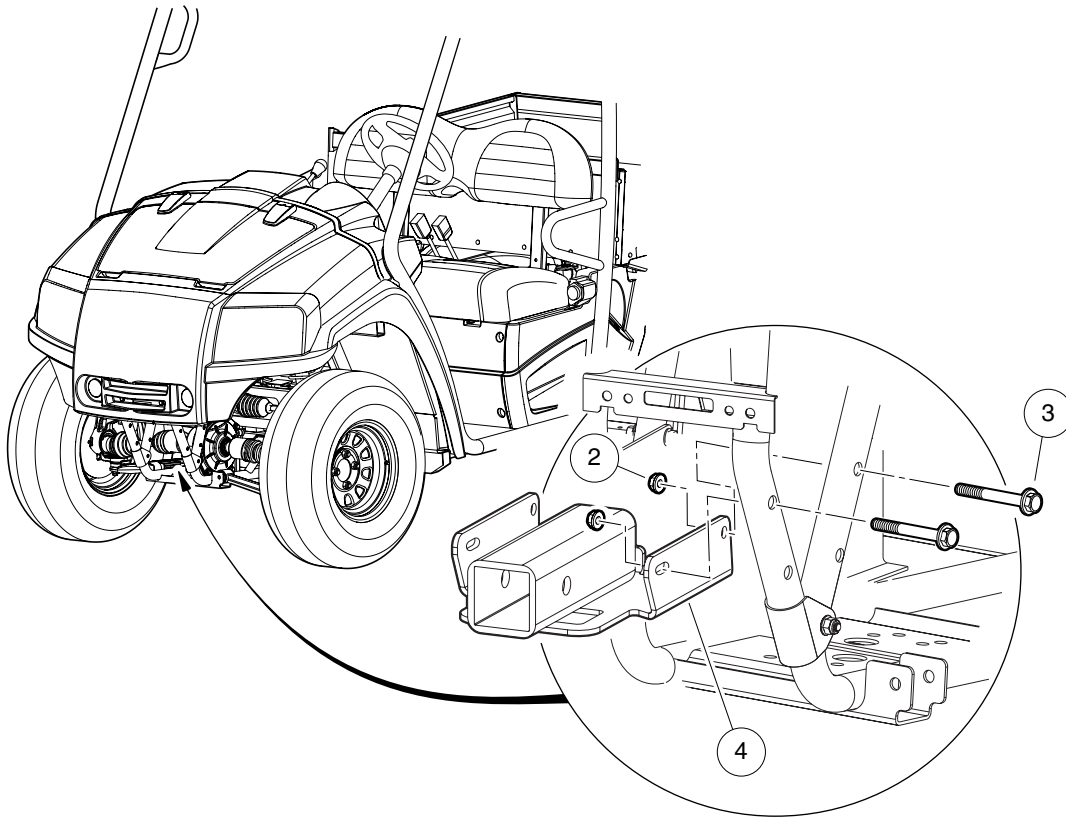
# BRUSH GUARD

ITEM	PART NO.	DESCRIPTION	QTY
		<b>1 2 3 4</b>	
1	525 76 76-01	Kit, Brushguard, Frt (includes items 2 through 8) .....	1
2	523 34 59-25	Bolt, Flg, M10x1.5x55, Patch .....	8
3	603 00 33-94	Screw, M10 X 1.25 X 30 Hex Blk .....	4
4	603 00 33-95	Nut, Flg, M10 X 1.25 Hex Blk .....	12
5	603 00 33-91	Weldment, Brushguard, HUV 4421 .....	1
6	525 76 77-01	Instr, Brushguard, Frt (not shown) .....	1
7	525 76 78-01	Bracket- Brshgrd Drv .....	1
8	525 76 79-01	Bracket- Brshgrd Pas .....	1

**1**  
**G**

1

G



000873-001

# RECEIVER HITCH – FRONT

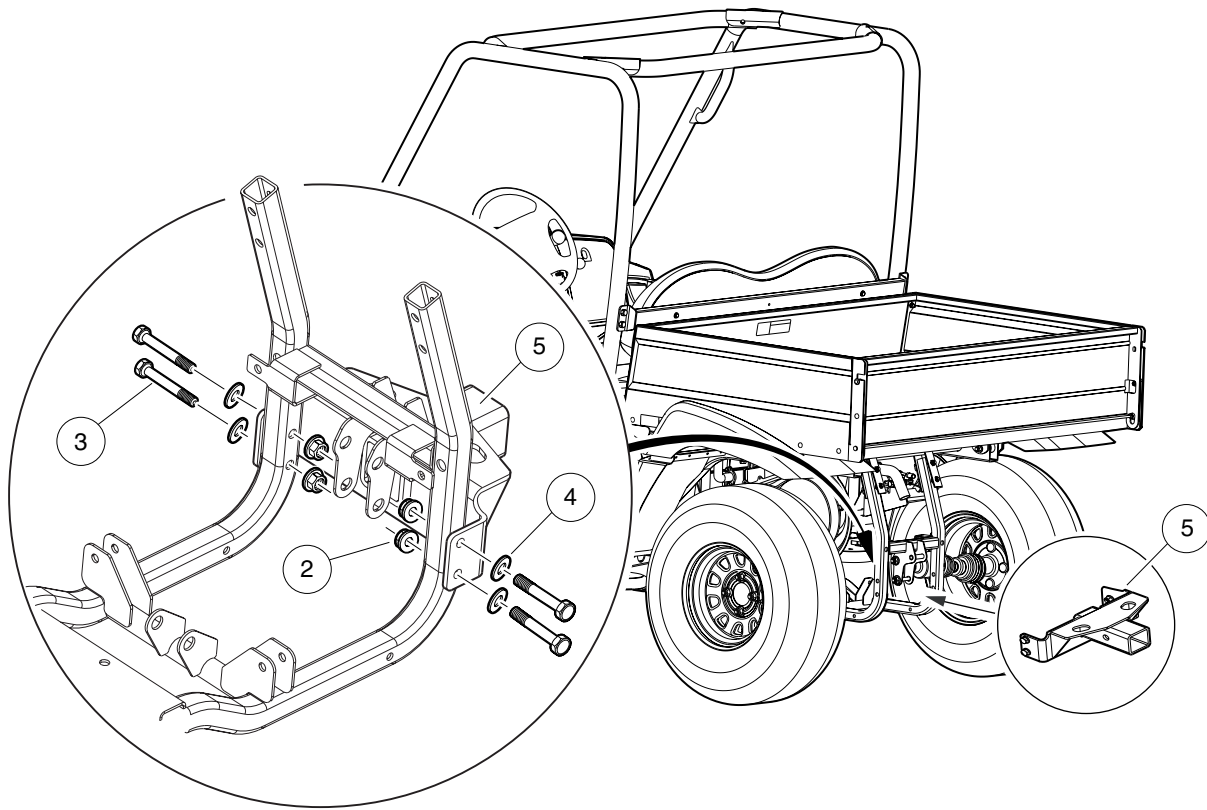
ITEM	PART NO.	DESCRIPTION	QTY
		<b>1 2 3 4</b>	
1	525 77 02-01	Kit, 2" Front Receiver (includes items 2 through 5) .....	1
2	603 00 15-86	Nut Flg M10 X 1.5 Nylon .....	4
3	523 34 59-25	Bolt, Flg, M10x1.5x55, Patch .....	4
4	525 76 82-01	Weldment, Hitch, Channel .....	1
5	525 77 01-01	Instr, Hitch, Channel (not shown) .....	1

**1**

**G**

1

G



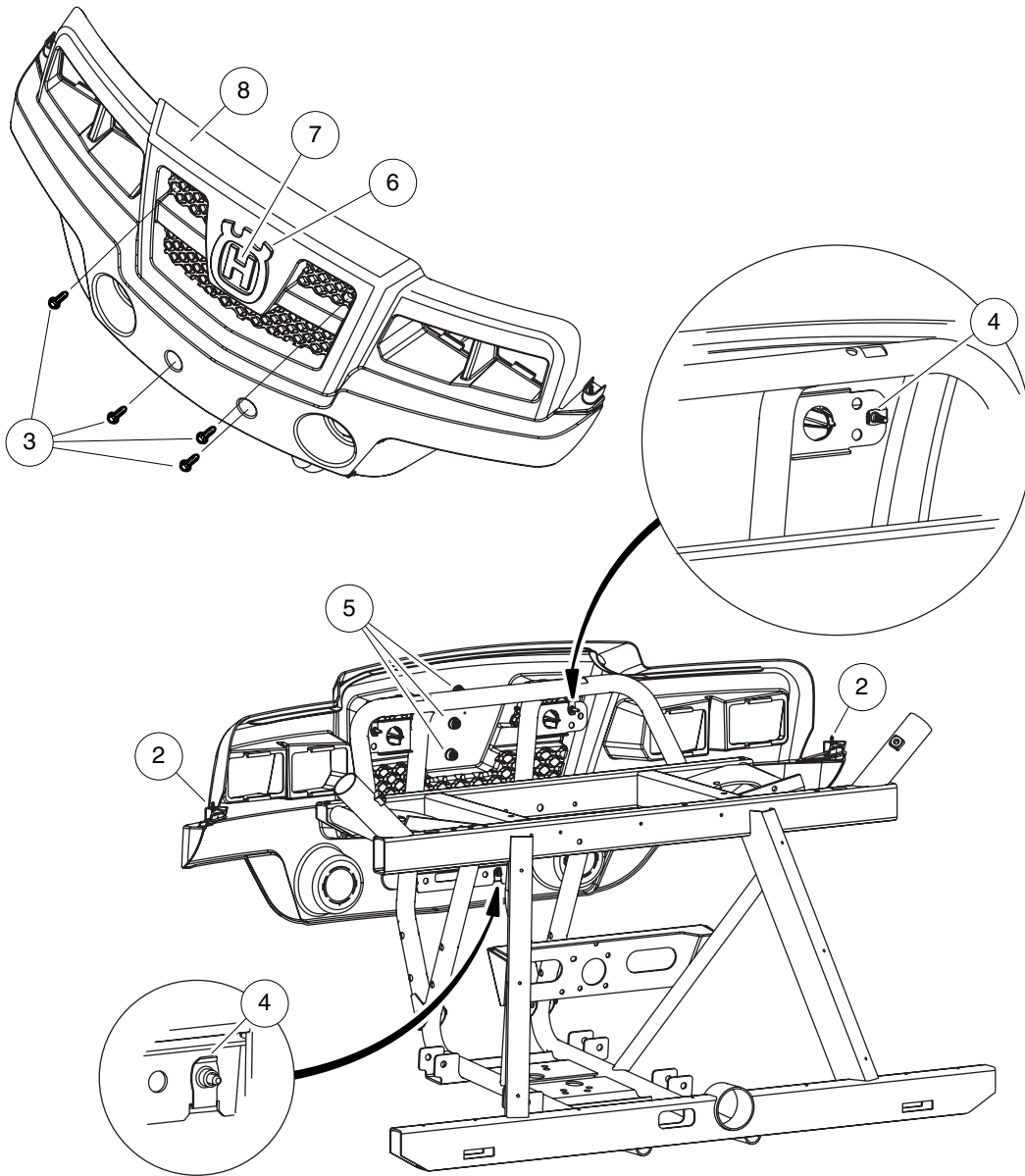
000873-002



# RECEIVER HITCH – REAR

ITEM	PART NO.	DESCRIPTION	QTY
		<b>1 2 3 4</b>	
1	522 71 86-31	Kit, Receiver, Rear, XRT 950 (includes items 2 through 6) .....	1
2	603 00 13-00	Nut Flg M10 X 1.5 Mech Def .....	4
3	603 00 16-72	Bolt, M10 X 55, Zn-Ni (Black) .....	4
4	603 00 16-73	Washer, Hard, M10, Zn-Ni/Blk .....	4
5	525 32 82-34	Asm, Receiver, Rear .....	1
6	525 76 66-01	Instr, Kit, Rear Receiver (not shown) .....	1

**1**  
**G**



000879-001

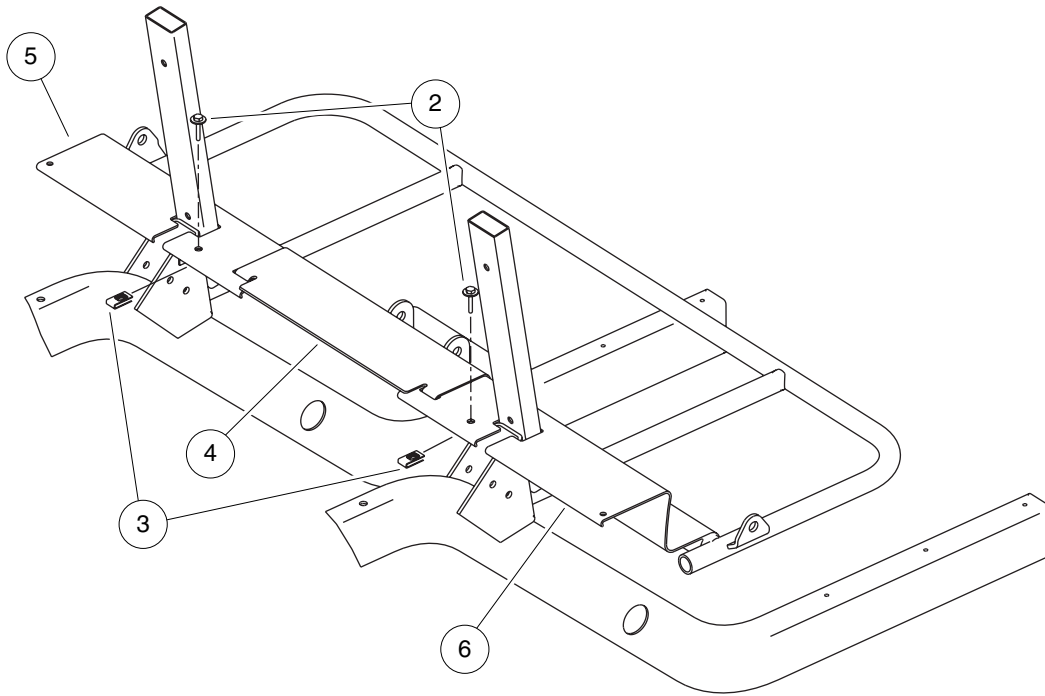
# FASCIA

ITEM	PART NO.	DESCRIPTION	QTY
		<b>1 2 3 4</b>	
1	N/A	Instl, Fascia, Huv 4214/4414 (includes items 2 through 8) .....	1
2	523 34 59-13	Screw, Torx Pan Hd Pt, M6 X 20 .....	2
3	603 00 32-54	Screw - M6 X 1.0 X 30 Sems .....	4
4	603 00 39-61	U-nut, M6-1.0 Prev Torque .....	4
5	531 30 81-75	Screw, D50x16, Torx PN Hd PT .....	3
6	603 00 34-01	Emblem, Husqvarna, Outer .....	1
7	603 00 34-02	Emblem, Husqvarna, Inner .....	1
8	N/A	Fascia, Huv .....	1

**1**  
**G**

1

G



000890-001

# CLOSEOUT PANELS

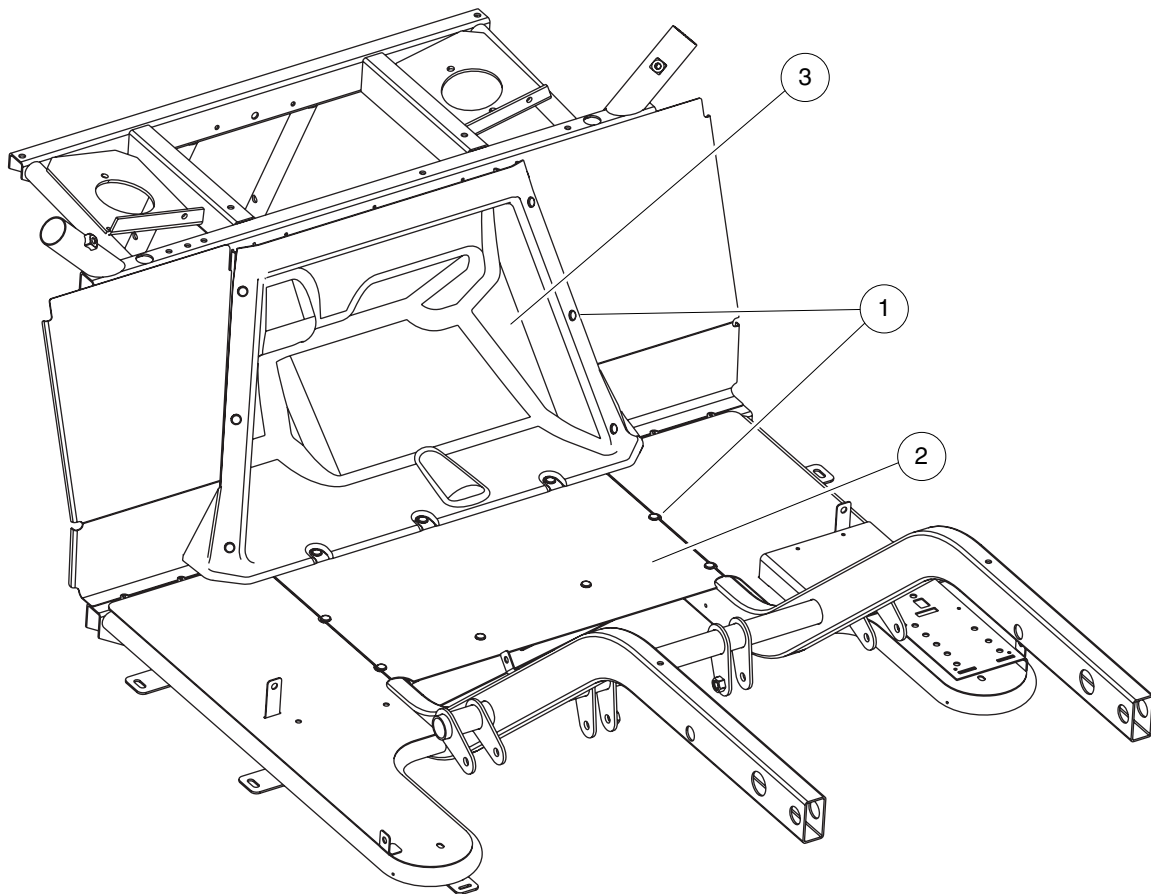
ITEM	PART NO.	DESCRIPTION	QTY
		<b>1 2 3 4</b>	
1	N/A	Instl, Closeout Panels, Rear (includes items 2 through 6) .....	1
2	603 00 32-54	Screw - M6 X 1.0 X 30 Sems .....	2
3	603 00 39-61	U-nut, M6-1.0 Prev Torque .....	2
4	525 32 82-61	Panel, Closeout, Center .....	1
5	525 32 82-62	Panel, Closeout, Center .....	1
6	525 32 82-63	Panel, Closeout, Pass .....	1

**1**

**G**

1

G



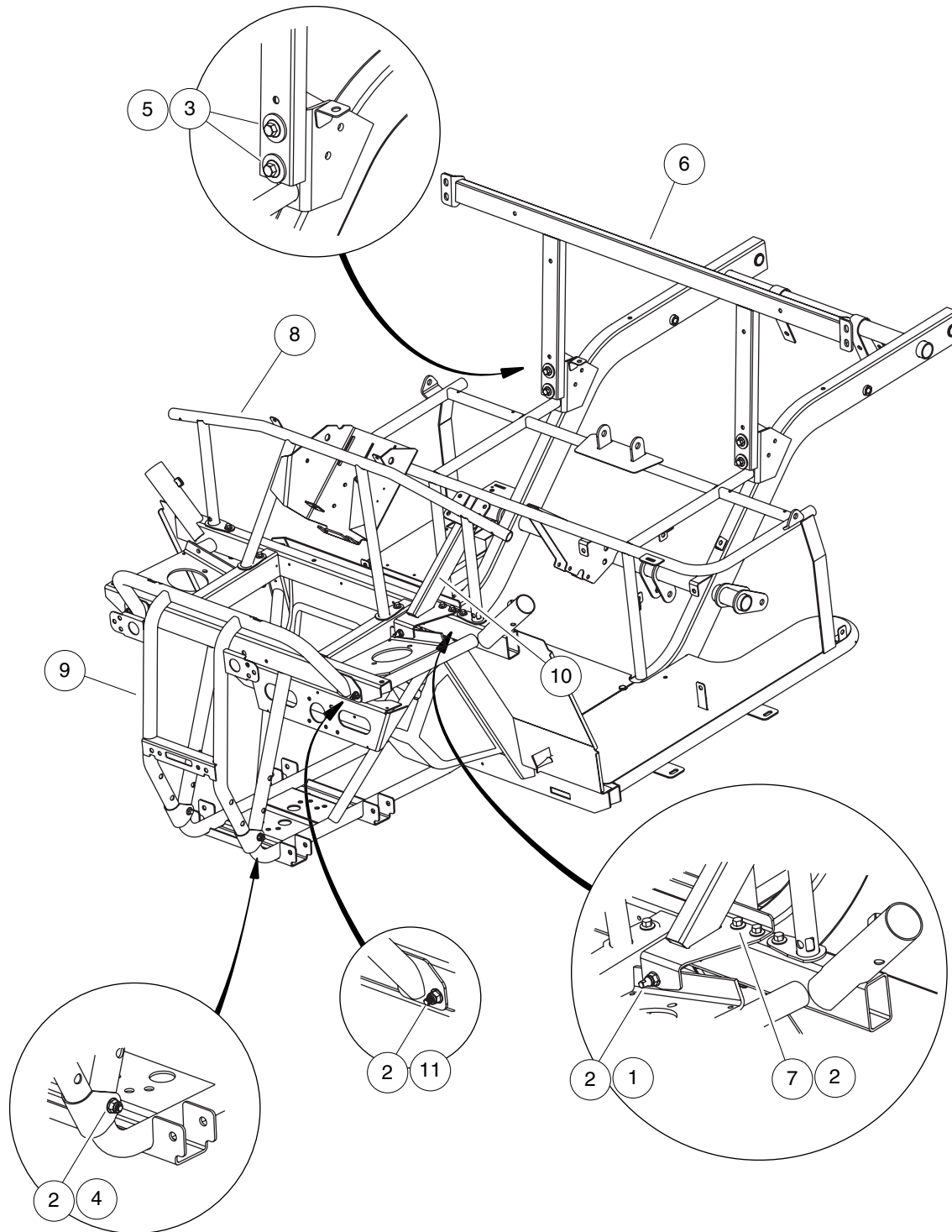
000885-001

# FLOOR PLATE AND PANEL

ITEM	PART NO.	DESCRIPTION	QTY
		<b>1 2 3 4</b>	
1	603 00 44-60	3/16 X 1.19 Alum Rivet, Blk .....	20
2	525 32 82-55	Plate, Floor, Middle .....	1
3	525 79 71-01	Closeout, Pedal-vac Formed .....	1

**1**

**G**



000911-001

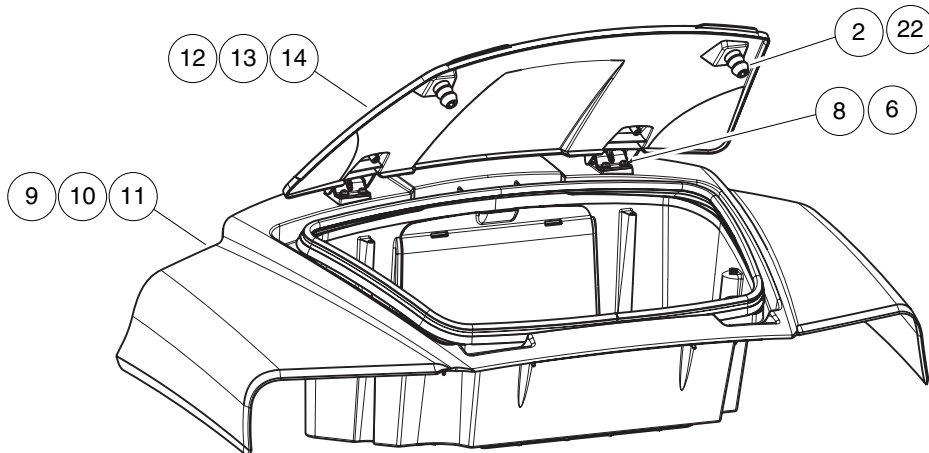
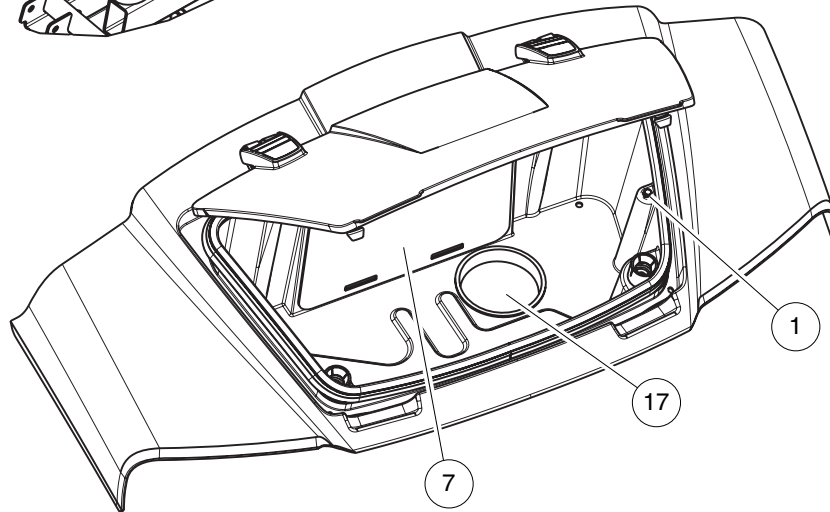
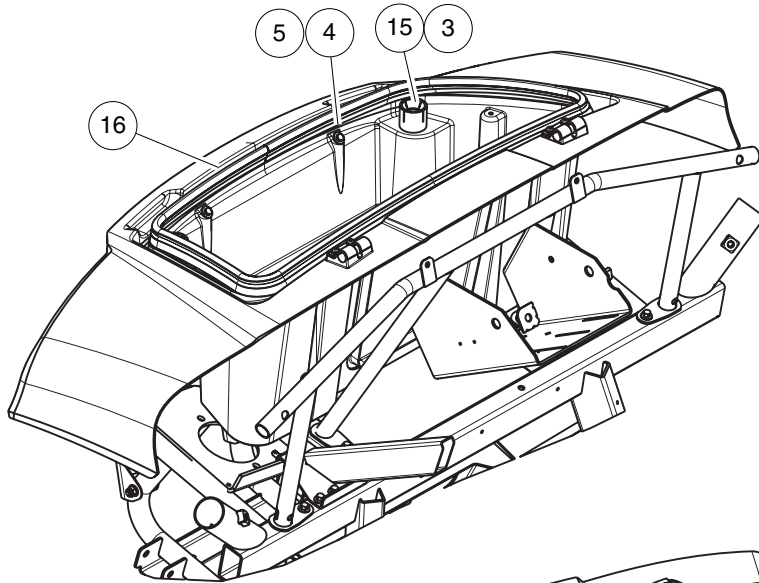


# FRAME COMPONENTS

ITEM	PART NO.	DESCRIPTION	QTY
		<b>1 2 3 4</b>	
1	603 00 08-75	Bolt, Flange Head, M8 X 30.0 .....	1
2	603 00 12-98	Nut,m8,all Metal Lock .....	11
3	603 00 11-74	Washer Hard,m10 .....	4
4	603 00 28-61	Bolt Flanged Head, M8x1.25 X 50 with Loctite .....	2
5	523 34 59-25	Bolt, Flg, M10x1.5x55, Patch .....	4
6	523 34 59-50	Weldment, Mtg, Seat Back .....	1
7	523 34 59-80	Bolt, Flg, M8 X 1.25 X 80 .....	6
8	523 34 59-88	Weldment, Supp, Dash .....	1
9	523 34 59-89	Weldment, Mtg, Fascia .....	1
10	525 32 82-14	Brkt, Supp, Steering .....	1
11	525 76 61-01	Bolt, Flg, M8 X X 60 .....	2

**1**

**G**

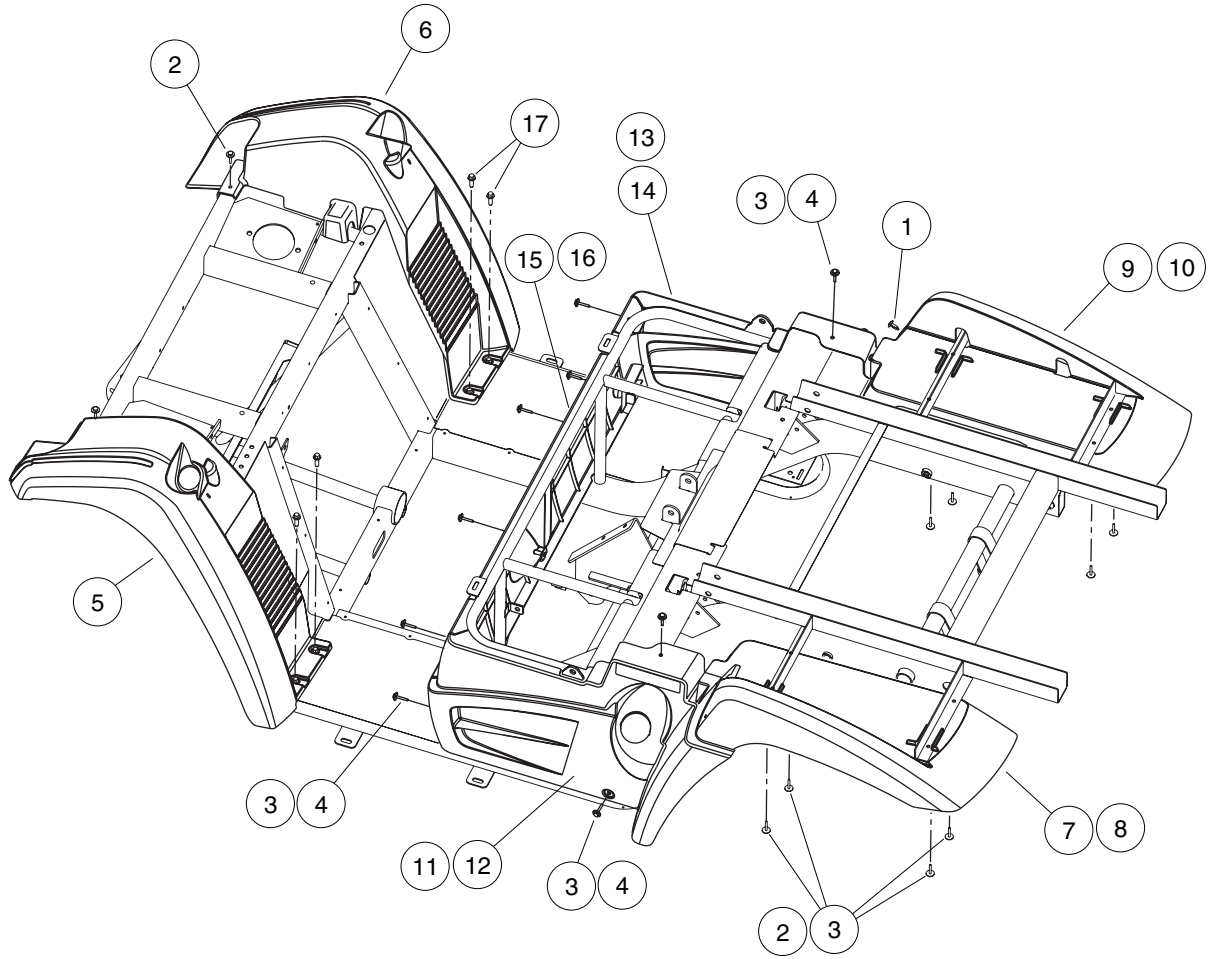


000876-002

# COWL

ITEM	PART NO.	DESCRIPTION	QTY
		<b>1 2 3 4</b>	
1	603 00 36-01	Screw, 1/4-15 X .50 Hi-lo Hex .....	2
2	603 00 07-73	Seat Holder Base .....	2
3	603 00 07-77	Seat Holder Cup .....	2
4	603 00 32-54	Screw - M6 X 1.0 X 30 Sems .....	2
5	603 00 39-61	U-nut, M6-1.0 Prev Torque .....	2
6	603 00 34-43	Screw,m6,torx,interlock,thread .....	4
7	525 32 82-11	Cover, Access .....	1
8	525 32 82-13	Bracket, Hinge .....	2
9	N/A	Cowl, Huv, Orange .....	1
10	N/A	Cowl, Huv, Olive Green .....	1
11	N/A	Cowl, Huv, Rthwhd-g .....	1
12	N/A	Hood, Huv, Orange .....	1
13	N/A	Hood, Huv, Olive Green .....	1
14	N/A	Hood, Huv, Rthwhd-g .....	1
15	525 76 84-01	Screw, Round Hd, M5.5 X 38 .....	4
16	525 76 86-01	Seal, Bulb, 13 X 27 X 1888 Mm .....	1
17	525 76 98-01	Cap, Ldpe, 122 Mm .....	1

**1**  
**G**

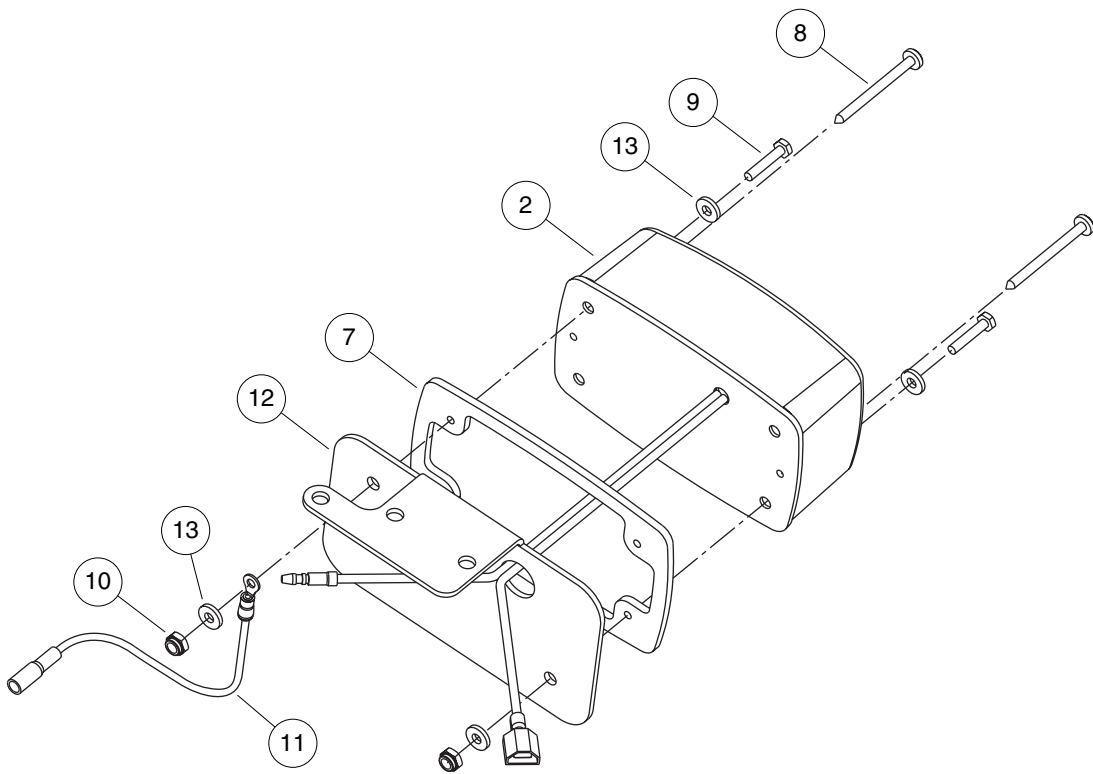


000877-002

# FENDERS AND REAR BODY PANELS

ITEM	PART NO.	DESCRIPTION	QTY
		<b>1 2 3 4</b>	
1	603 00 35-90	Screw, Tuflok Panel, 1/4 .....	4
2	603 00 32-54	Screw - M6 X 1.0 X 30 Sems .....	10
3	603 00 39-61	U-nut, M6-1.0 Prev Torque .....	18
4	523 34 59-14	Screw M6-1.0x25.4 Thd Fm Sems .....	10
5	523 34 59-28	Fender, Front, Ds .....	1
6	523 34 59-29	Fender, Front, Ps .....	1
7	523 34 59-30	Fender, Rear, Ds, Black .....	1
8	N/A	Fender, Rear, Ds, Camo, Rt-g .....	1
9	523 34 59-31	Fender, Rear, Ps, Black .....	1
10	N/A	Fender, Rear, Ps, Camo, Rt-g .....	1
11	523 34 59-32	Panel, Ds .....	1
12	N/A	Panel, Ds, Camo, Rthwhd-g .....	1
13	523 34 59-33	Panel, Ps, Blk .....	1
14	N/A	Panel, Ps, Camo, Rthwhd-g .....	1
15	523 34 59-34	Panel, Center, Blk .....	1
16	N/A	Panel, Center, Camo, Rthwhd-g .....	1
17	603 00 44-60	3/16 X 1.19 Alum Rivet, Blk .....	4
18	525 32 82-32	Flap, Mud, Common (not shown) .....	2

**1**  
**G**

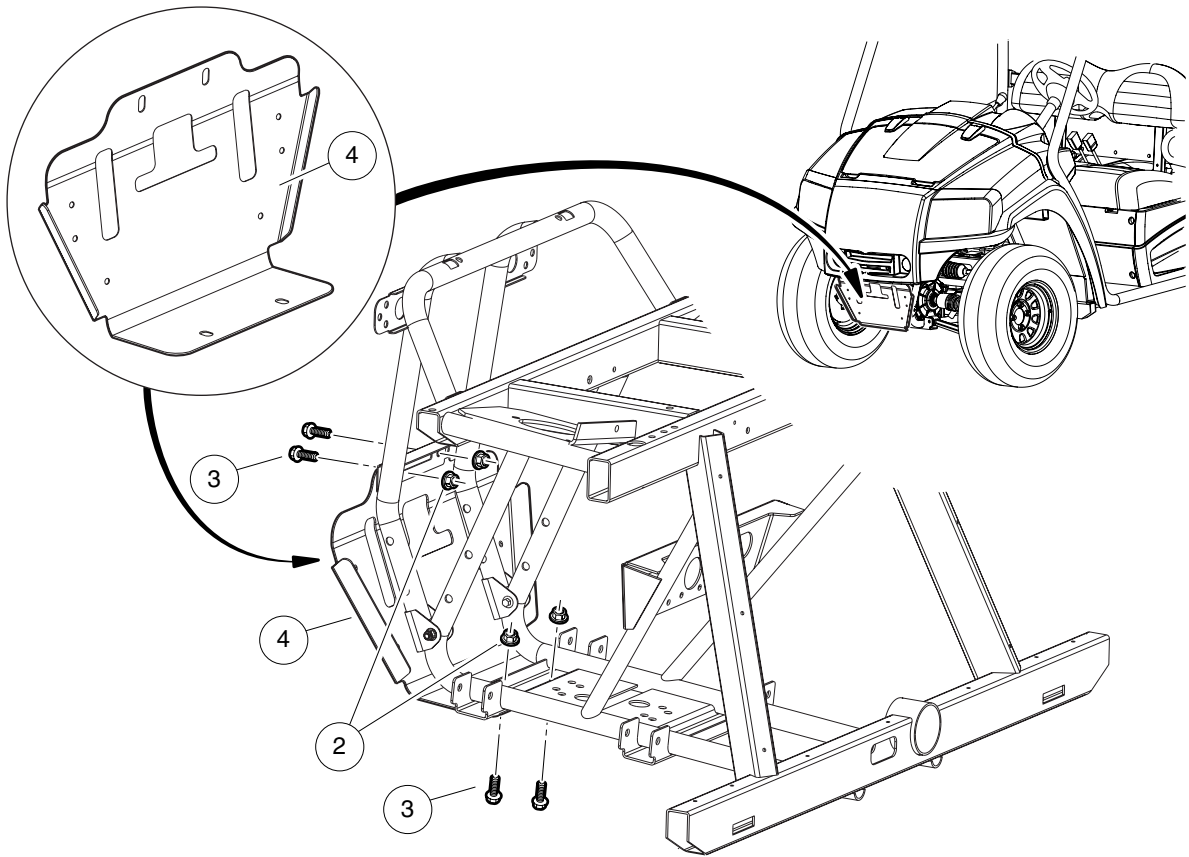


000916-001

# TAILLIGHTS

ITEM	PART NO.	DESCRIPTION	QTY
		<b>1 2 3 4</b>	
1	603 00 45-18	Taillight Assembly (includes items 2 through 6) .....	1
2	N/A	Light, Tail (includes items 3 through 5) .....	1
3	523 34 59-03	Taillight Bulb .....	1
4	523 34 59-04	Taillight Lens .....	1
5	N/A	Base, Taillight .....	1
6	523 34 59-09	Hardware Kit, Tail Light (includes items 7 and 8) .....	1
7	N/A	Gasket .....	1
8	N/A	Screw, Tapered .....	2
9	523 34 59-10	Screw, #6-32 X 0.75 Hex-Head Machine .....	2
10	523 34 59-11	Locknut, #6-32 Nylon .....	2
11	531 30 83-53	Wire Asm, Ground, Taillight .....	1
12	525 79 43-01	Bracket, Light, Brake .....	1
13	603 00 45-10	Washer, #6 Flat .....	4

**1**  
**G**



000874-001



# FRONT SKID PLATE

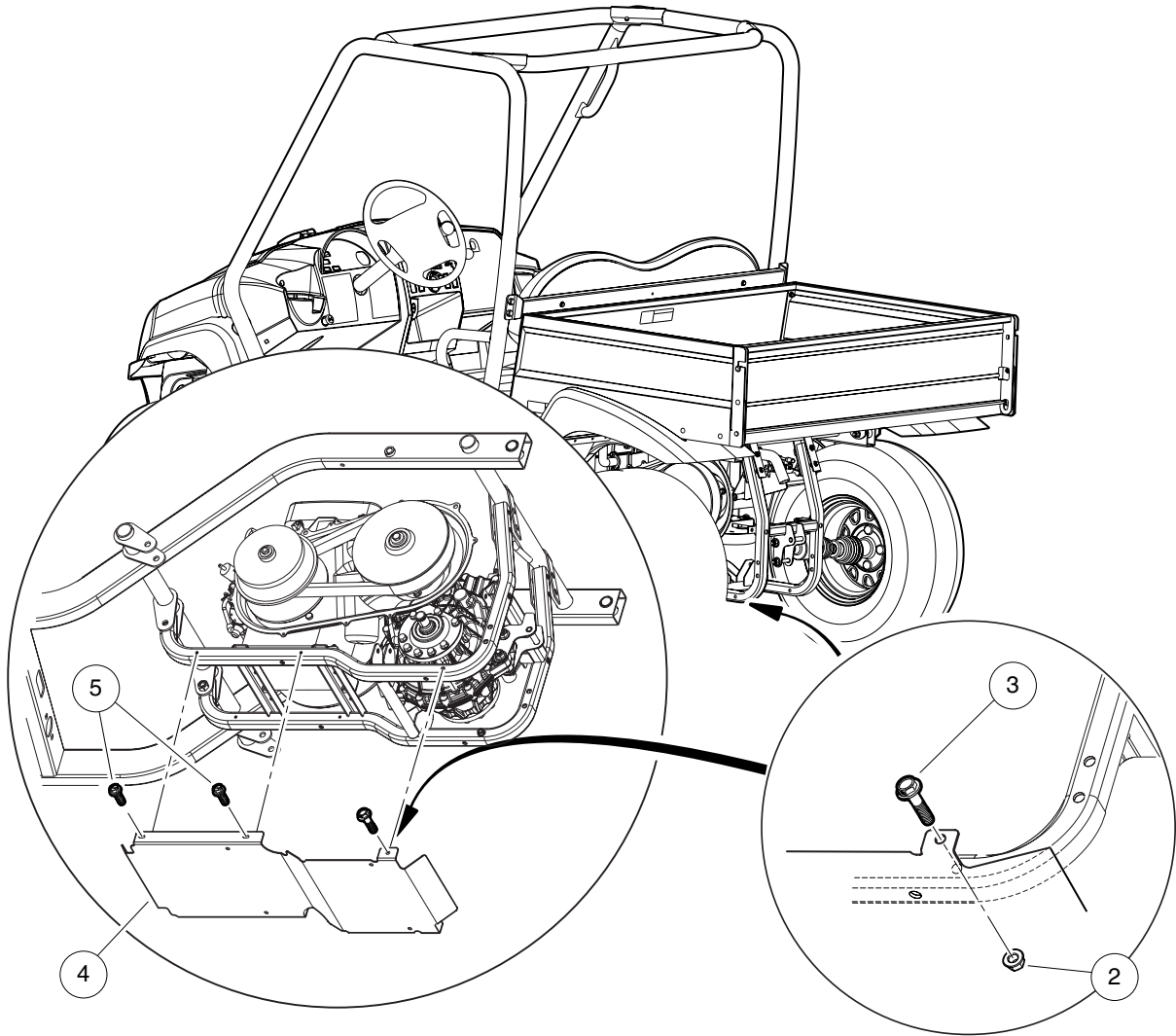
ITEM	PART NO.	DESCRIPTION	QTY
		<b>1 2 3 4</b>	
1	525 77 04-01	Kit, Front Skid Plate, Steel (includes items 2 through 5) .....	1
2	603 00 13-00	Nut Flg M10 X 1.5 Mech Def .....	4
3	603 00 16-69	Bolt, Flange Head, M10 X 1.5 X 25 .....	4
4	525 76 83-01	Plate-access-mount .....	1
5	525 77 03-01	Instr, Access Mounting Plate (not shown) .....	1

1

G

1

G



000874-002

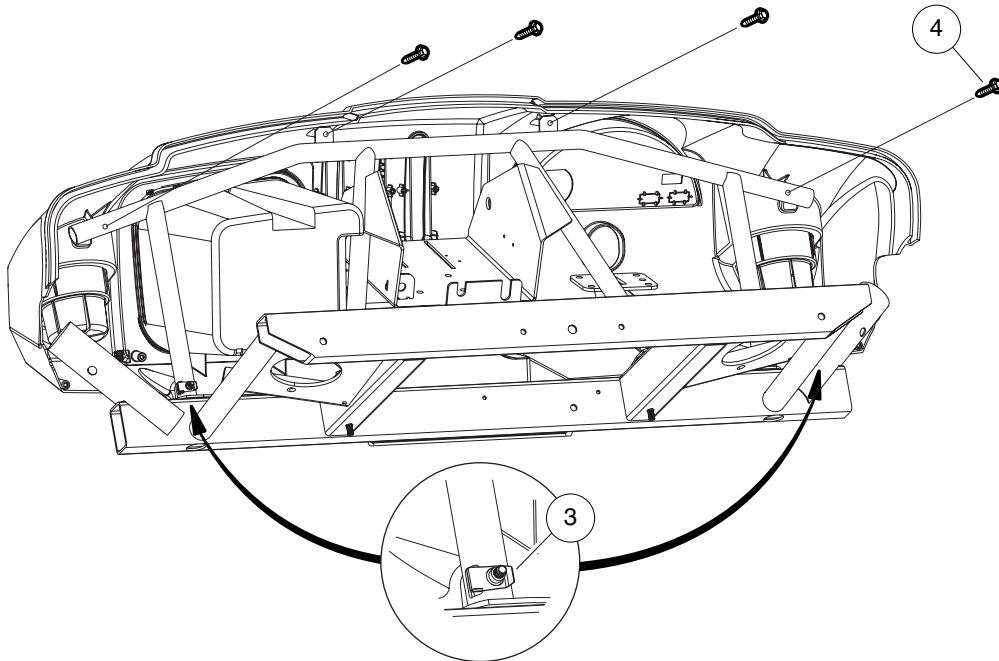
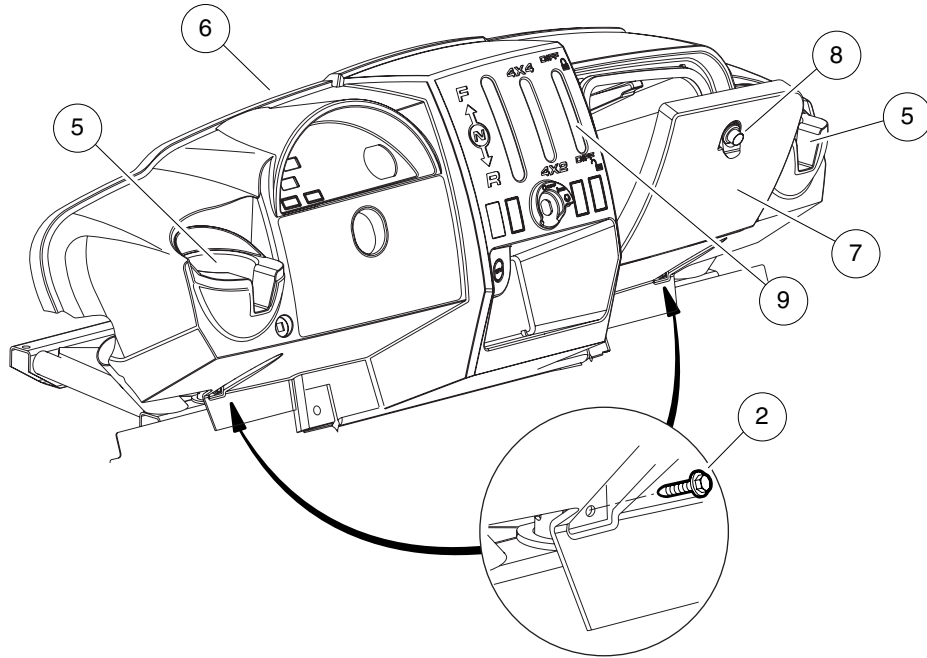
# REAR SKID PLATE

ITEM	PART NO.	DESCRIPTION	QTY
		<b>1 2 3 4</b>	
1	525 79 41-01	Kit, Skidplate, Rear, XRT 950 (includes items 2 through 6) .....	1
2	603 00 12-98	Nut,m8,all Metal Lock .....	2
3	531 30 81-25	Bolt, M8 X 45, Flanged, Black .....	2
4	525 32 82-38	Plate, Skid, Rear, 4x4 .....	1
5	525 32 82-72	Scr, 1/4-20 X 1.25 Hwhcs, Tt .....	4
6	525 79 40-01	Instr, Kit, Skidplate, Rear (not shown) .....	1

1

G

**1**  
**G**

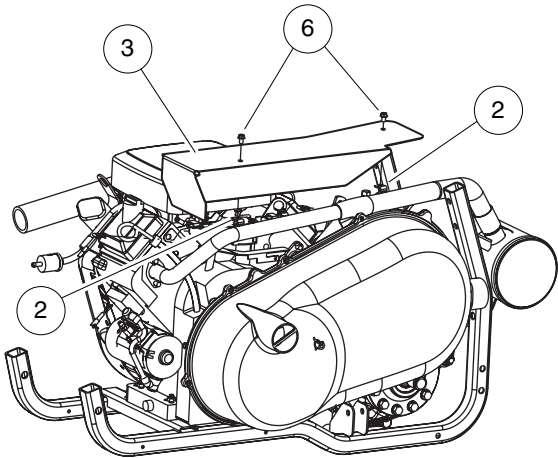
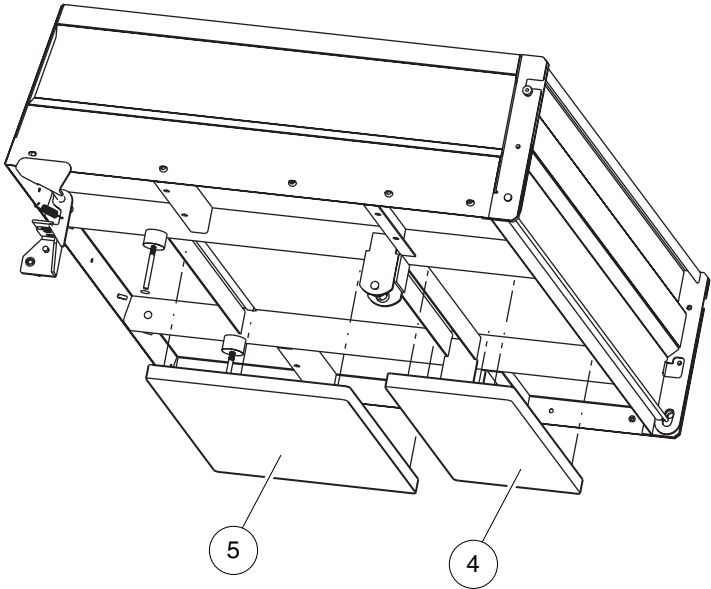


000878-001

# DASH

**1**  
**G**

ITEM	PART NO.	DESCRIPTION	QTY
		<b>1 2 3 4</b>	
1	N/A	Instl, Dash, Storage (includes items 2 through 8) .....	1
2	603 00 08-73	Bolt, Flanged Head, M6x1.0x40 .....	2
3	603 00 39-61	U-nut, M6-1.0 Prev Torque .....	2
4	603 00 34-43	Screw,m6,torx,interlock,thread .....	4
5	603 00 34-47	Cup Holder, Utility .....	2
6	523 34 59-26	Dash- Control Mount .....	1
7	523 34 59-27	Cover, Dash .....	1
8	603 00 34-50	Latch, Push Close .....	1
9	525 32 82-12	Cover, Shifter .....	1



000875-001

# HEAT SHIELD

ITEM	PART NO.	DESCRIPTION	QTY
		<b>1 2 3 4</b>	
1	N/A	Instl, Heat Shield, XRT 950 (includes items 2 through 6) .....	1
2	603 00 02-10	Nut, 1/4-20 Speed .....	2
3	525 32 82-95	Shield, Exhaust, Heat .....	1
4	525 76 72-01	Foam, Barrier, Heat, Bed, Rear .....	1
5	525 76 73-01	Foam, Barrier, Heat, Bed, Frnt .....	1
6	525 76 99-01	Screw, Tapping, 1/4-20 X .375 .....	2

**1**  
**G**

1

G

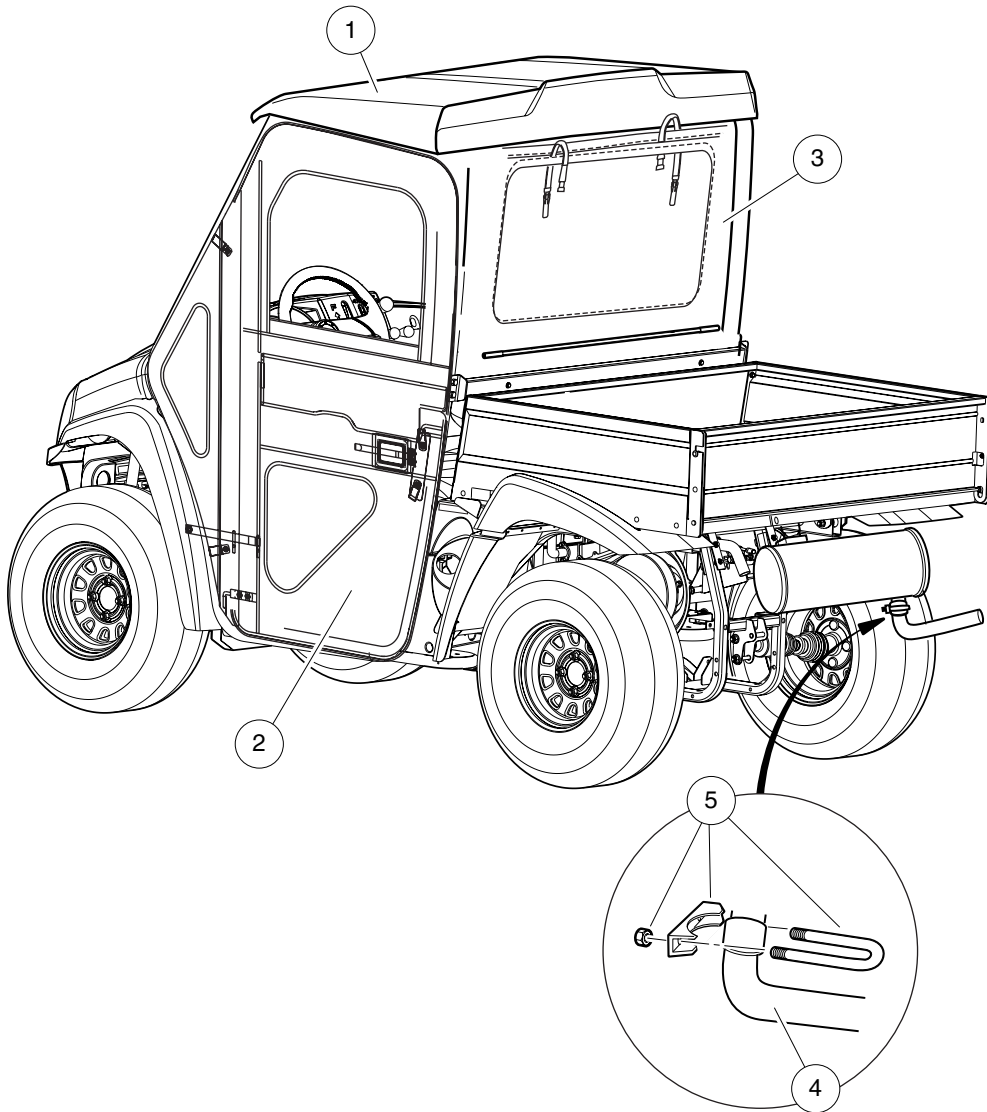
6

**⚠ WARNING**

**CARBON MONOXIDE CAN CAUSE ILLNESS, SERIOUS INJURY, OR DEATH**

The engine produces carbon monoxide, which is a deadly, odorless, colorless gas that can quickly accumulate in an enclosed cab. Do not run the engine in a parked vehicle without proper cab ventilation. Move to fresh air if you feel nausea, headache, dizziness, drowsiness, or weakness.

103619901



000914-001

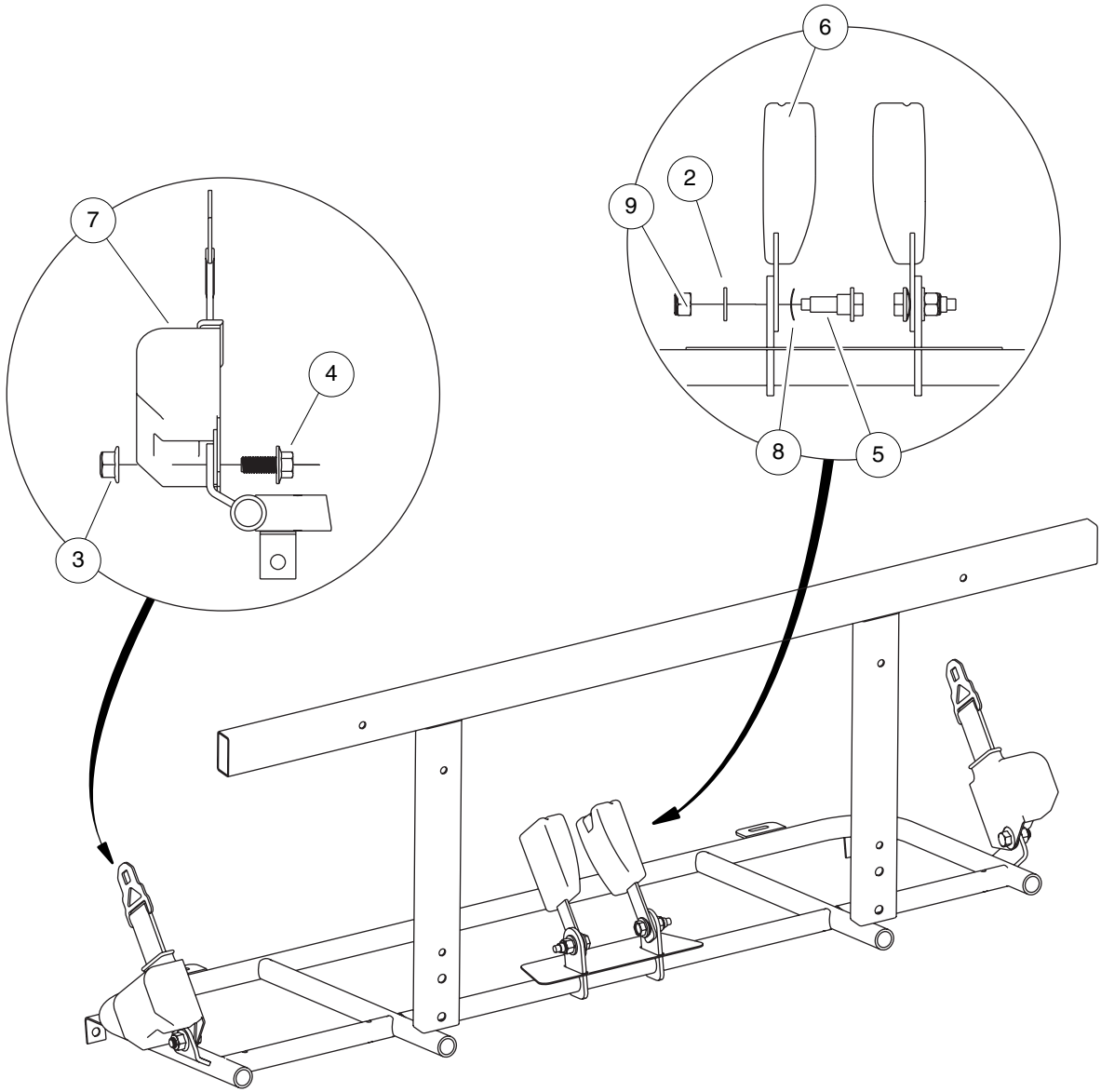


# CANOPY AND DOORS

ITEM	PART NO.	DESCRIPTION	QTY
		<b>1 2 3 4</b>	
1	525 32 82-71	Kit, Canopy, Bestop .....	1
2	525 32 82-93	Kit, Door, Bestop .....	1
3	525 76 97-01	Kit, Backlite, Bestop .....	1
4	525 79 67-01	Pipe, Extension, Xrt 950 .....	1
5	525 79 68-01	Clamp, Exhaust, 1.25" Diameter .....	1
6	525 79 70-01	Decal, Warn, Co, Cab .....	1

1

G



000902-001

# SEAT BELTS

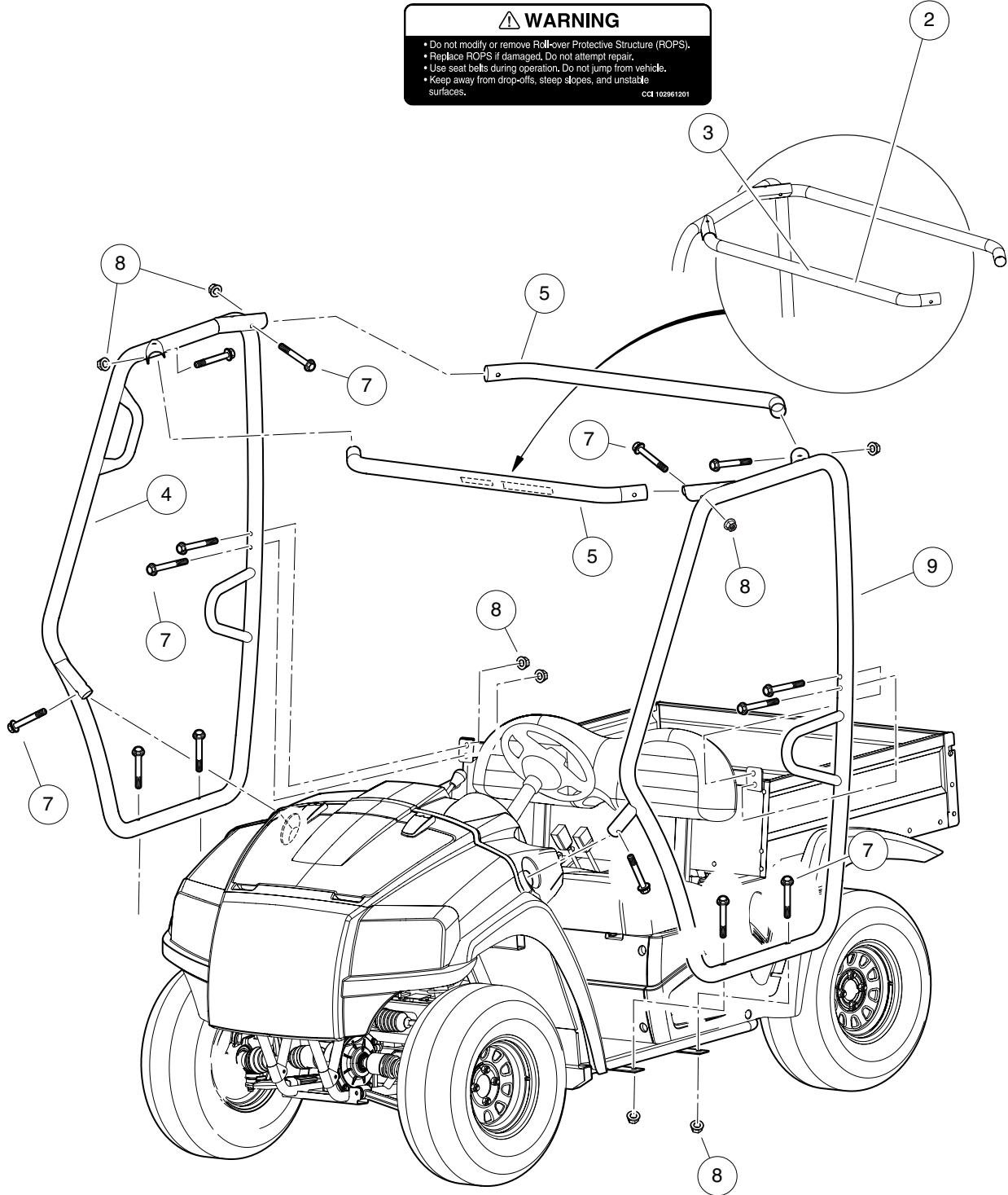
ITEM	PART NO.	DESCRIPTION	QTY
		<b>1 2 3 4</b>	
1	523 34 59-58	Instl, Seat Belts (includes items 2 through 9) .....	1
2	603 00 02-72	Washer, 7/16 Flat .....	2
3	603 00 34-72	Ln Flg, M12 X 1.75, Md, Black .....	2
4	531 30 83-98	Bolt Flg, M12x1.75 X 25 Black .....	2
5	525 32 82-99	Bolt, Shoulder, 15 Mm .....	2
6	525 76 57-01	Asm, Buckle, Seat-belt .....	2
7	525 76 58-01	Retractor, Seat-belt .....	2
8	525 76 60-01	Washer, Spring, 15 Mm Id .....	2
9	525 76 69-01	Lock Nut, 7/16-20 Nylon .....	2

**1**  
**G**



**WARNING**  
**YOUNG DRIVERS INCREASE CHANCE OF DEATH**  
 • Young drivers may not be able to control vehicle.  
 • No drivers younger than 16 years old.  
 • Do not leave children unattended on vehicle. CDI 102459401

**WARNING**  
 • Do not modify or remove Roll-over Protective Structure (ROPS).  
 • Replace ROPS if damaged. Do not attempt repair.  
 • Use seat belts during operation. Do not jump from vehicle.  
 • Keep away from drop-offs, steep slopes, and unstable surfaces. CDI 102961201



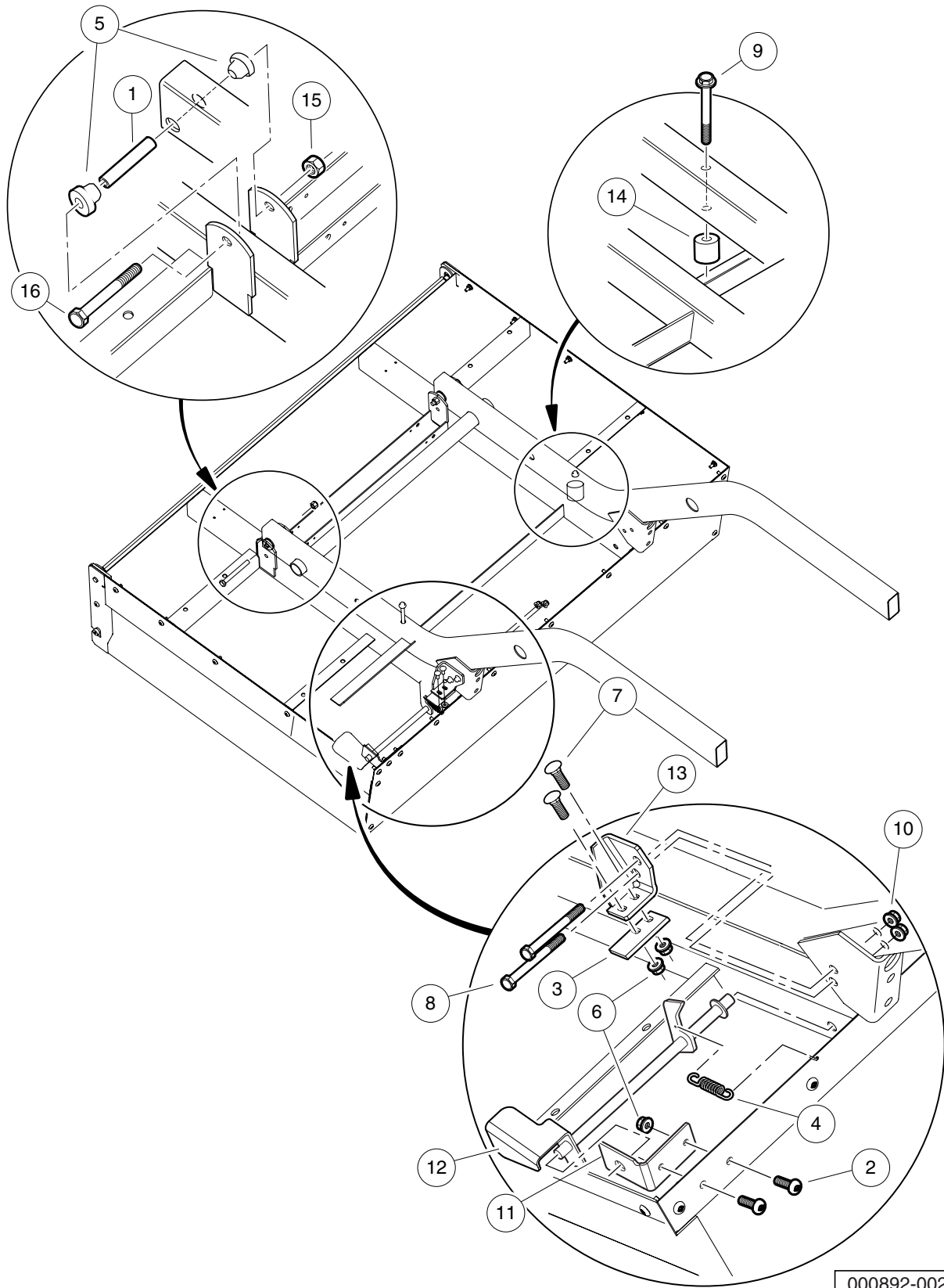
000872-002

# ROPS

ITEM	PART NO.	DESCRIPTION	QTY
		<b>1 2 3 4</b>	
1	525 32 82-48	Kit, Rops, Pass Side (includes items 2 through 5) .....	1
2	603 00 11-06	Decal, Young Driver Warning .....	1
3	603 00 34-83	Decal, Warning, AWD ROPS .....	1
4	525 32 82-30	Weldment, Rops, Pass .....	1
5	525 32 82-31	Tube, Cross, Rops, Top .....	2
6	525 32 82-49	Kit, Rops, Drv Side (includes items 7 through 10) .....	1
7	603 00 34-73	Bolt, Flanged, M10 X 1.5 X 65 .....	14
8	603 00 34-75	Nut, Flanged, M10 x 1.5, Black .....	12
9	525 32 82-29	Weldment, Rops, Driver .....	1
10	525 79 30-01	Instr, Kit, Rops (not shown) .....	1

**1**  
**G**

**1**  
**G**

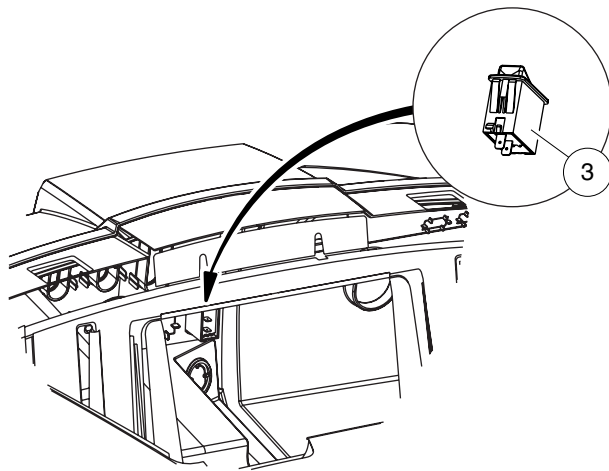
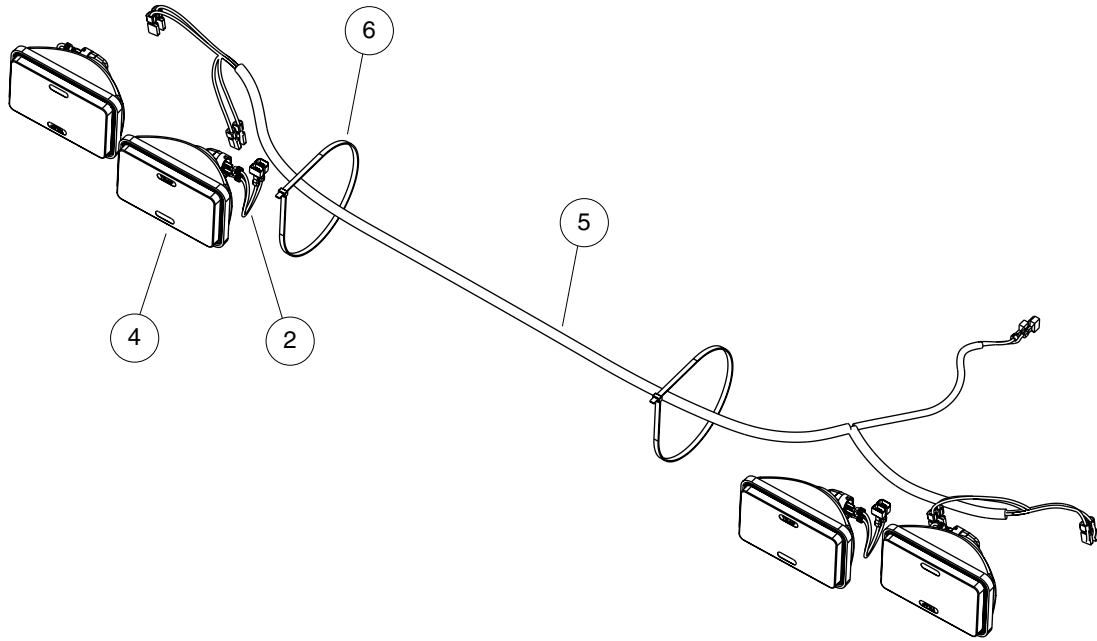


# TILT BED HINGE AND LATCH

ITEM	PART NO.	DESCRIPTION	QTY
		<b>1 2 3 4</b>	
1	603 00 01-36	Bushing, Steel .....	2
2	603 00 02-26	Screw, 1/4-20 X 0.75 Torx Truss-Head .....	2
3	603 00 02-46	Latch Plate, Tilt Bed .....	1
4	603 00 02-54	Extension, Spring Latch .....	1
5	603 00 02-63	Bushing, Urethane .....	4
6	603 00 05-21	Locknut, 1/4-20 Hex Whiz .....	4
7	603 00 26-03	Carriage Bolt, 1/4-20 X 0.75 .....	2
8	523 34 59-15	Bolt - Flange Hd, M8 X 70.0 .....	2
9	523 34 59-16	Bolt - Flange Hd, M8 X 85.0 .....	2
10	603 00 13-08	Lock Nut, Flg M8 X 1.25 Nylon .....	2
11	525 32 82-22	Angle, Mtg, Bed, Latch .....	1
12	525 32 82-23	Weldment, Handle, Bed Latch .....	1
13	525 32 82-58	Weldment, Mtg, Latch Plate .....	1
14	525 32 82-60	Bumper, Rubber, 38 Mm Dia .....	2
15	603 00 00-95	Locknut, 3/8-16 Hex .....	2
16	603 00 00-96	Screw, 3/8-16 X 3.375 Hex Cap .....	2

**1**  
**G**

**1**  
**G**



000880-002

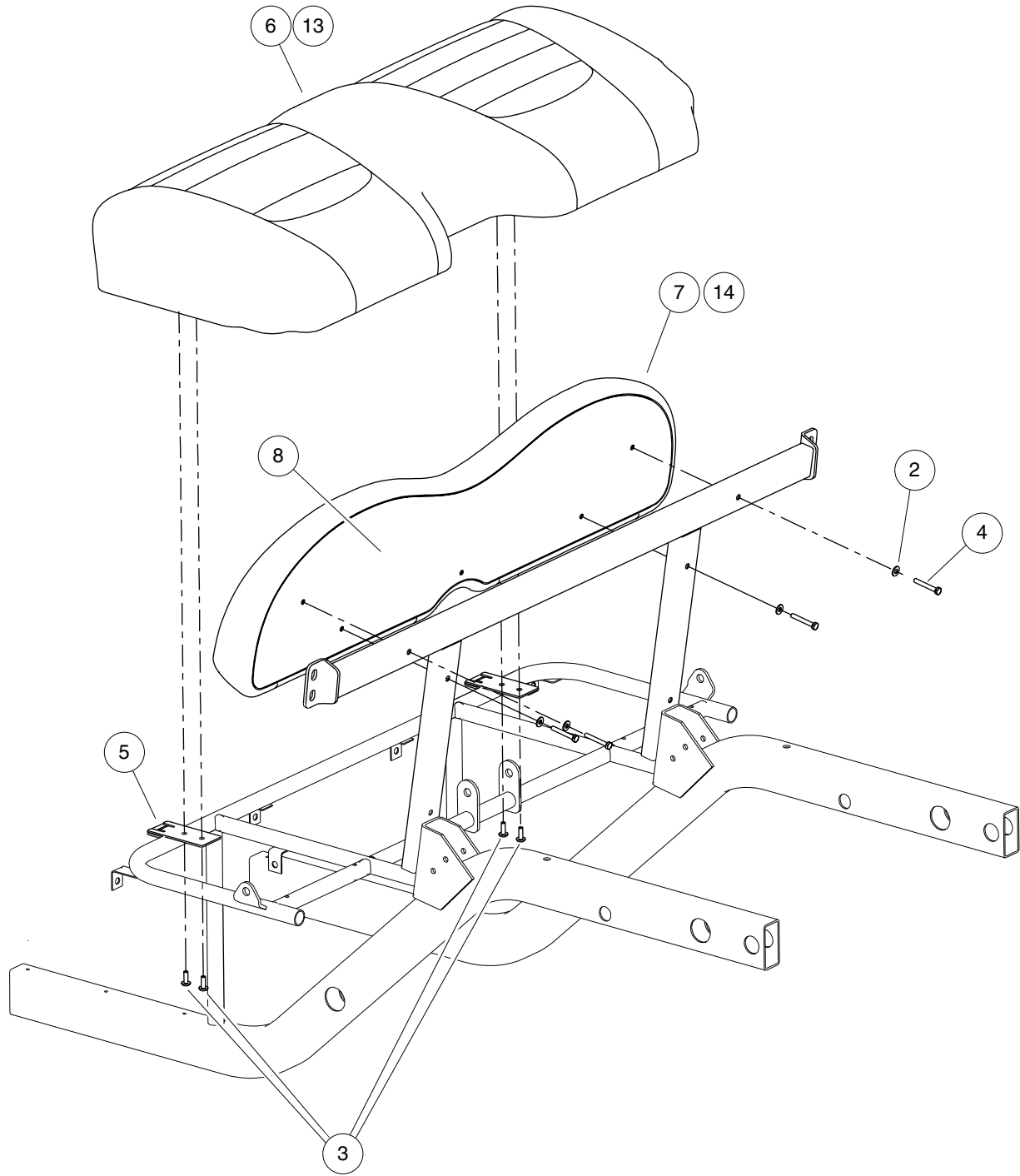


# HEADLIGHTS

ITEM	PART NO.	DESCRIPTION	QTY
		<b>1 2 3 4</b>	
1	N/A	Instl, HI, Dual, Rect (includes items 2 through 6) .....	1
2	603 00 06-25	Connector Harness Assembly, Headlight .....	4
3	531 30 82-50	Switch, Rocker, Light .....	1
4	603 00 34-03	Headlamp, 3x5 Rectangular .....	4
5	531 30 83-79	Harness, Bct/huv Restyle Headlight .....	1
6	603 00 00-93	Tie Wrap, 11" Nylon .....	2

**1**  
**G**

**1**  
**G**

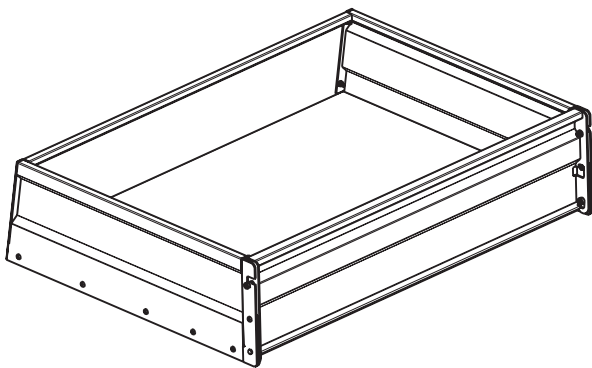
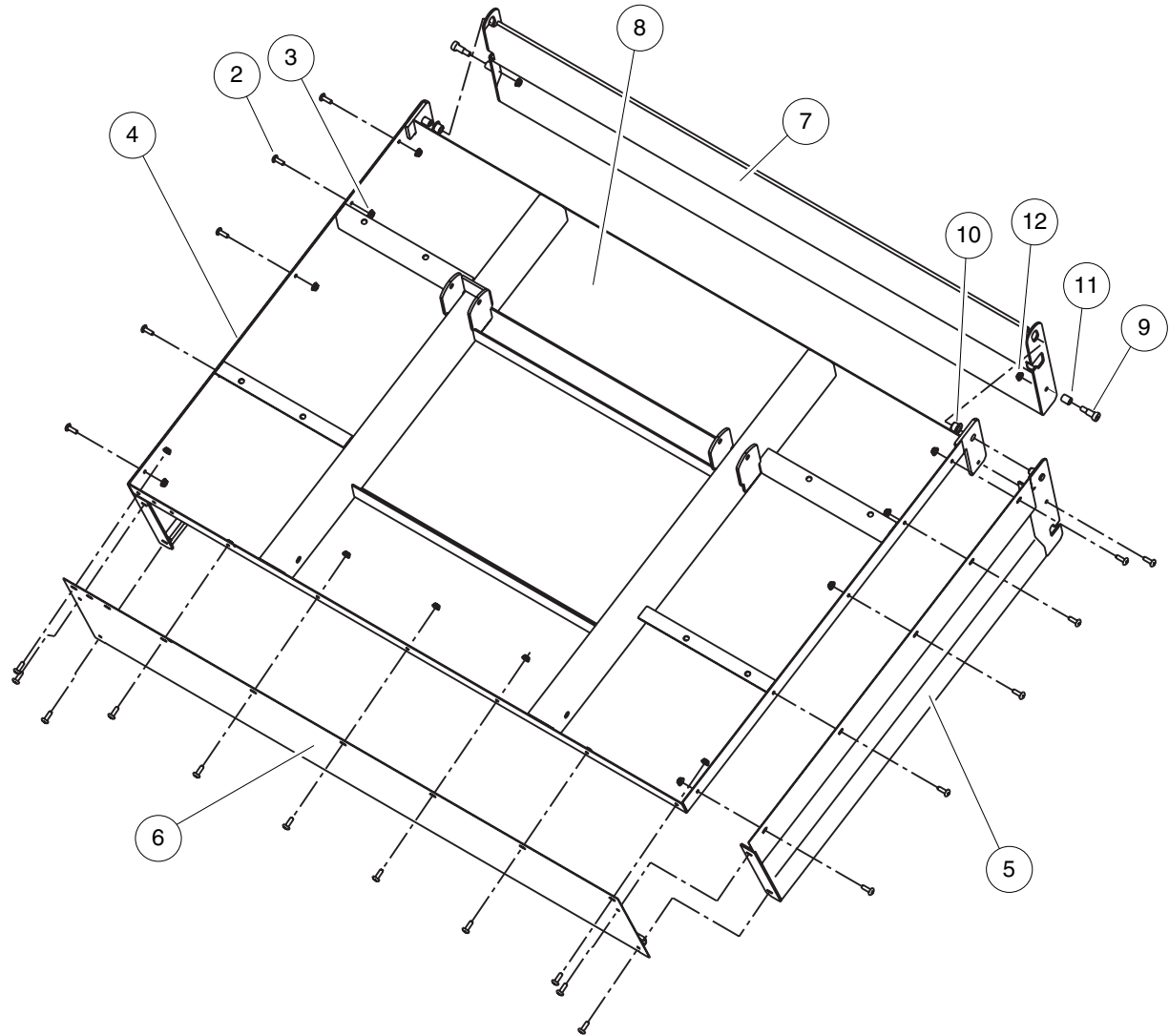


000891-001

# BENCH SEATS

ITEM	PART NO.	DESCRIPTION	QTY
		<b>1 2 3 4</b>	
1	N/A	Instl, Benchseat-gry (includes items 2 through 8) .....	1
2	523 34 59-05	Washer, 1/4 Flat .....	4
3	603 00 02-26	Screw, 1/4-20 X 0.75 Torx Truss-Head .....	4
4	523 34 59-17	Screw, 1/4-20 X 1 3/4 Ss Hx Ca .....	4
5	525 32 82-33	Plate, Hinge, Seat .....	2
6	525 32 82-42	Seat Bottom, Bench, Gray .....	1
7	525 32 82-44	Seat Back, Bench, Gray .....	1
8	525 79 45-01	Cap, Seatback, One Piece .....	1
9	N/A	Instl, Benchseat-blk (includes items 10 through 16) .....	1
10	523 34 59-05	Washer, 1/4 Flat .....	4
11	603 00 02-26	Screw, 1/4-20 X 0.75 Torx Truss-Head .....	4
12	523 34 59-17	Screw, 1/4-20 X 1 3/4 Ss Hx Ca .....	4
13	525 32 82-33	Plate, Hinge, Seat .....	2
14	525 32 82-43	Seat Bottom, Bench, Black .....	1
15	525 32 82-45	Seat Back, Bench, Black .....	1
16	525 79 45-01	Cap, Seatback, One Piece .....	1

**1**  
**G**



000892-001

# BOX BED

**1**  
**G**

ITEM	PART NO.	DESCRIPTION	QTY
		<b>1 2 3 4</b>	
1	525 32 82-27	Asm, Bed Box, Steel 400lbs (includes items 2 through 12) .....	1
2	603 00 02-26	Screw, 1/4-20 X 0.75 Torx Truss-Head .....	23
3	603 00 05-21	Locknut, 1/4-20 Hex Whiz .....	23
4	525 32 82-17	Weldment, Bed Panel, Drv .....	1
5	525 32 82-18	Weldment, Bed Panel, Pas .....	1
6	525 32 82-19	Panel, Front, Bed .....	1
7	525 32 82-20	Weldment, Gate, Bed .....	1
8	525 32 82-21	Weldment, Bed Bottom, 400 Lb .....	1
9	525 32 82-90	Bolt, Shoulder, M10 X 16mm2.7 .....	2
10	525 79 48-01	Bushing, Fl, 12.7 Id X 15.9 Od .....	2
11	525 79 49-01	Bushing, 10 Mm Id X 16 Mm Lg .....	2
12	525 79 62-01	Nut, Flg, Hex, M8-1.25 .....	2

1

G

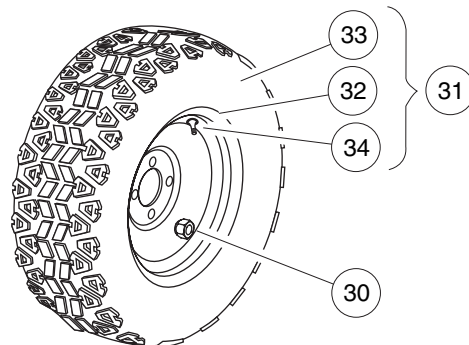
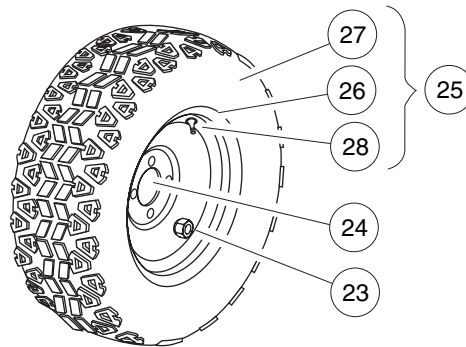
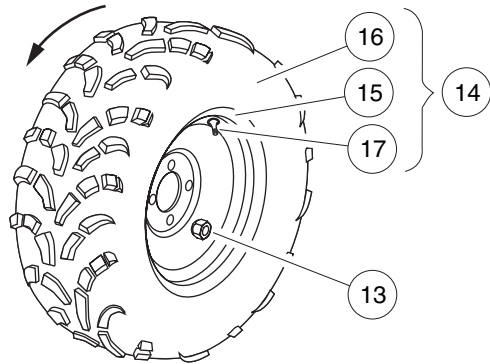
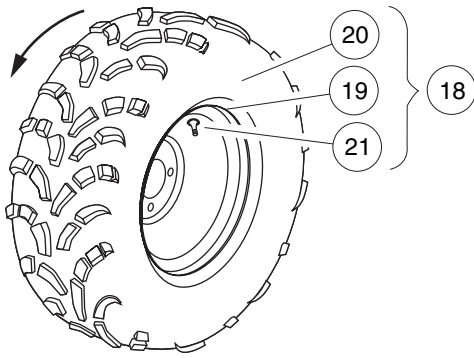
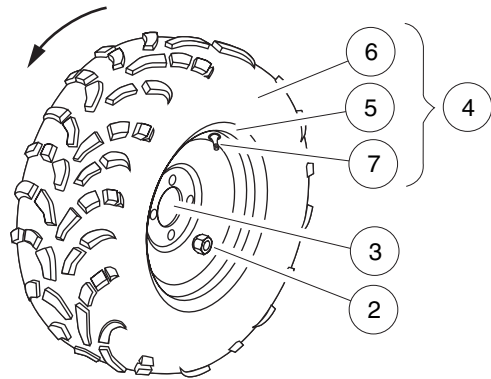
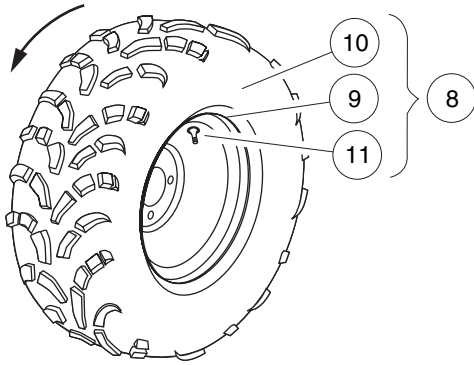
# WHEELS AND TIRES

---

2

G

**2**  
**G**



000913-001



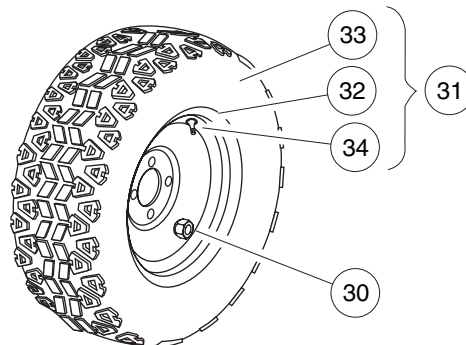
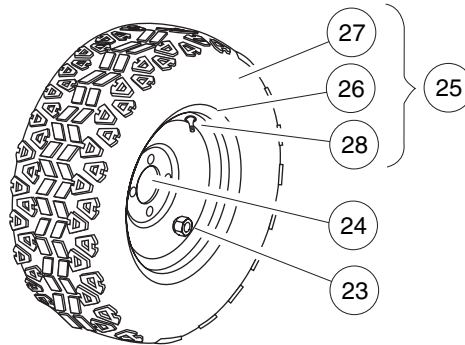
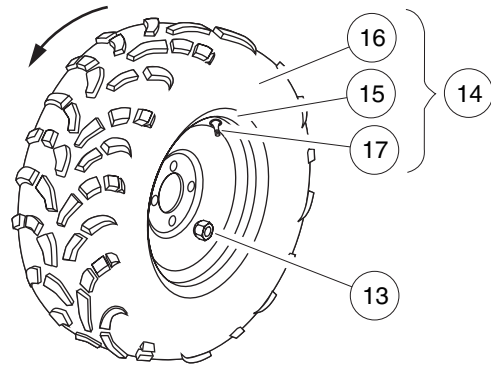
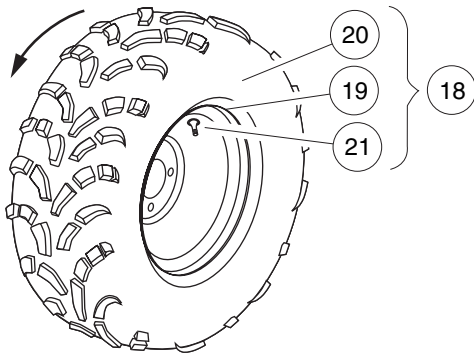
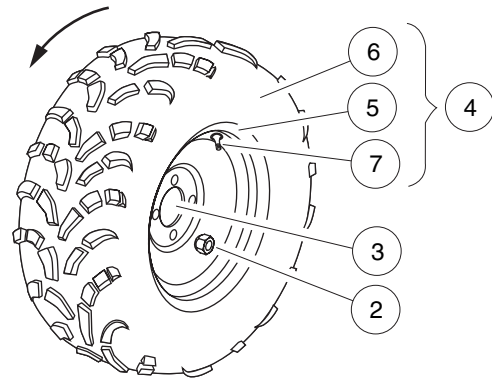
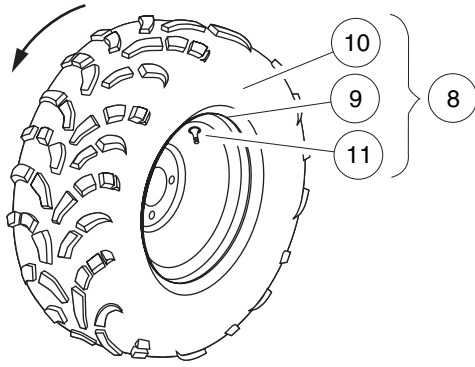
## WHEELS AND TIRES – FRONT

ITEM	PART NO.	DESCRIPTION	QTY
		<b>1 2 3 4</b>	
1	525 79 32-01	Alloy Mud Front (includes items 2 through 8) .....	1
2	523 34 59-20	Lug Nut, 1/2" Closed End .....	8
3	525 76 65-01	Cap, Plastic, Alloy Wheel .....	2
4	525 76 89-01	Tire/whl Asm, Alloy, Mud Lh F (includes items 5 through 7) .....	1
5	525 32 82-94	Wheel, Alloy .....	1
6	525 79 27-01	Tire, Mud 25x9.00-12 Nhs .....	1
7	603 00 00-33	Valve Stem .....	1
8	525 76 92-01	Tire/whl Asm, Alloy, Mud Rh F (includes items 9 through 11) .....	1
9	525 32 82-94	Wheel, Alloy .....	1
10	525 79 27-01	Tire, Mud 25x9.00-12 Nhs .....	1
11	603 00 00-33	Valve Stem .....	1
12	N/A	Black Mud Front (includes items 13 through 18) .....	1
13	603 00 00-34	Nut, Lug, 1/2-20 SAE J2283 .....	8
14	525 76 88-01	Tire/whl Asm, Steel, Mud Lh F (includes items 15 through 17) .....	1
15	531 30 83-36	Wheel, All trail, 10 Window, Black .....	1
16	525 79 27-01	Tire, Mud 25x9.00-12 Nhs .....	1
17	603 00 00-33	Valve Stem .....	1
18	525 76 91-01	Tire/whl Asm, Steel, Mud Rh F (includes items 19 through 21) .....	1
19	531 30 83-36	Wheel, All trail, 10 Window, Black .....	1
20	525 79 27-01	Tire, Mud 25x9.00-12 Nhs .....	1
21	603 00 00-33	Valve Stem .....	1
22	N/A	Alloy Hdat Front (includes items 23 through 25) .....	1
23	523 34 59-20	Lug Nut, 1/2" Closed End .....	8
24	525 76 65-01	Cap, Plastic, Alloy Wheel .....	2
25	525 76 90-01	Tire/whl Asm, Alloy Hdat F (includes items 26 through 28) .....	2
26	525 32 82-94	Wheel, Alloy .....	1
27	N/A	Tire, Hdat 25x9.00-12 Nhs .....	1
28	603 00 00-33	Valve Stem .....	1
29	N/A	Black Hdat Front (includes items 30 and 31) .....	1
30	603 00 00-34	Nut, Lug, 1/2-20 SAE J2283 .....	8
31	525 76 87-01	Tire/whl Asm, Steel, Hdat F (includes items 32 through 34) .....	2
32	531 30 83-36	Wheel, All trail, 10 Window, Black .....	1
33	N/A	Tire, Hdat 25x9.00-12 Nhs .....	1
34	603 00 00-33	Valve Stem .....	1

2

G

**2**  
**G**



000913-002

# WHEELS AND TIRES – REAR

ITEM	PART NO.	DESCRIPTION	QTY
		<b>1 2 3 4</b>	
1	525 79 36-01	Alloy Mud Rear (includes items 2 through 8) .....	1
2	523 34 59-20	Lug Nut, 1/2" Closed End .....	8
3	525 76 65-01	Cap, Plastic, Alloy Wheel .....	2
4	525 76 94-01	Tire/whl Asm, Alloy, Mud Rh R (includes items 5 through 7) .....	1
5	531 30 83-44	Mud Tire, 25" .....	1
6	525 32 82-94	Wheel, Alloy .....	1
7	603 00 00-33	Valve Stem .....	1
8	525 76 96-01	Tire/whl Asm, Alloy, Mud Lh R (includes items 9 through 11) .....	1
9	531 30 83-44	Mud Tire, 25" .....	1
10	525 32 82-94	Wheel, Alloy .....	1
11	603 00 00-33	Valve Stem .....	1
12	525 79 37-01	Black Mud Rear (includes items 13 through 18) .....	1
13	603 00 00-34	Nut, Lug, 1/2-20 SAE J2283 .....	8
14	531 30 83-42	Black Tire Asm Mud 11.0 In Left-Hand (includes items 15 through 17) .....	1
15	531 30 83-44	Mud Tire, 25" .....	1
16	531 30 83-36	Wheel, All trail, 10 Window, Black .....	1
17	603 00 00-33	Valve Stem .....	1
18	531 30 83-43	Black Tire Asm Mud 11.0 In Right-Hand (includes items 19 through 21) .....	1
19	531 30 83-44	Mud Tire, 25" .....	1
20	531 30 83-36	Wheel, All trail, 10 Window, Black .....	1
21	603 00 00-33	Valve Stem .....	1
22	525 79 38-01	Alloy Hdat Rear (includes items 23 through 25) .....	1
23	523 34 59-20	Lug Nut, 1/2" Closed End .....	8
24	525 76 65-01	Cap, Plastic, Alloy Wheel .....	2
25	525 76 93-01	Tire/whl Asm, Alloy, Hdat R (includes items 26 through 28) .....	2
26	525 32 82-94	Wheel, Alloy .....	1
27	525 79 58-01	Tire, Hdat 25x11.00-12 Nhs .....	1
28	603 00 00-33	Valve Stem .....	1
29	525 79 39-01	Black Hdat Rear (includes items 30 and 31) .....	1
30	603 00 00-34	Nut, Lug, 1/2-20 SAE J2283 .....	8
31	525 76 95-01	Tire/whl Asm, Steel, Hdat R (includes items 32 through 34) .....	1
32	531 30 83-36	Wheel, All trail, 10 Window, Black .....	1
33	525 79 58-01	Tire, Hdat 25x11.00-12 Nhs .....	1
34	603 00 00-33	Valve Stem .....	1

2

G

2

G

# DECALS

---

3

G

**UNDER 16**

**WARNING**

YOUNG DRIVERS INCREASE CHANCE OF DEATH

- Young drivers may not be able to control vehicle.
- No drivers younger than 16 years old.
- Do not leave children unattended on vehicle.

CCI 102459401

**WARNING**

- Do not modify or remove Roll-over Protective Structure (ROPS).
- Replace ROPS if damaged. Do not attempt repair.
- Use seat belts during operation. Do not jump from vehicle.
- Keep away from drop-offs, steep slopes, and unstable surfaces.

CCI 102961201

**WARNING**

CARBON MONOXIDE CAN CAUSE ILLNESS, SERIOUS INJURY, OR DEATH

The engine produces carbon monoxide, which is a deadly, odorless, colorless gas that can quickly accumulate in an enclosed cab. Do not run the engine in a parked vehicle without proper cab ventilation. Move to fresh air if you feel nausea, headache, dizziness, drowsiness, or weakness.

103619901

Use Only DOT 5 Brake Fluid

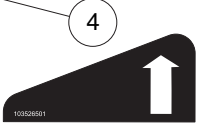
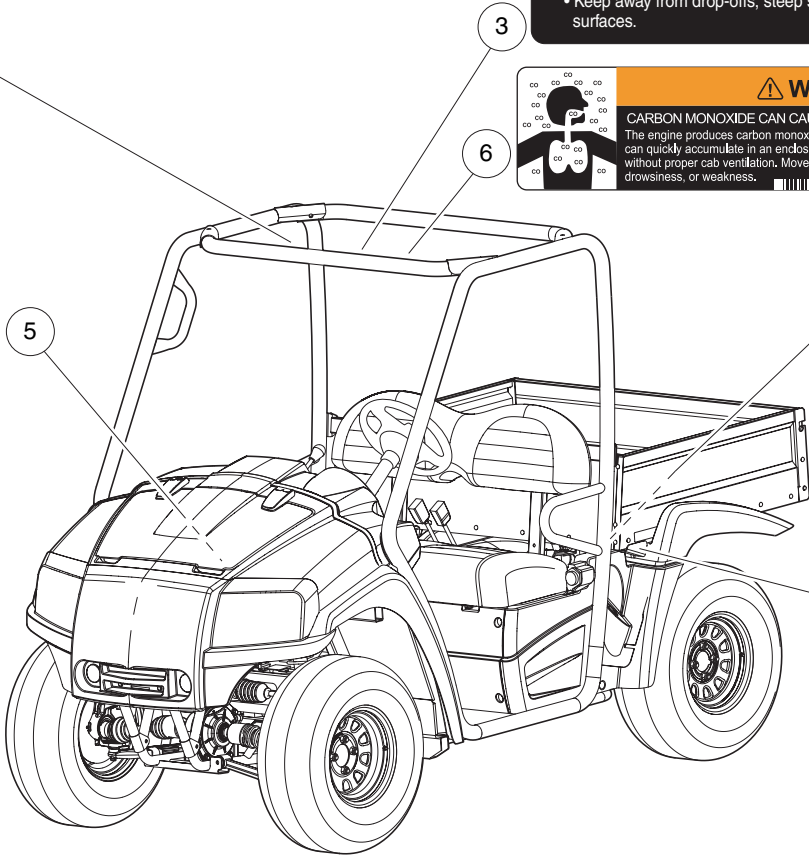
CCI 103532701

**WARNING**

CRUSH AREA

STAY CLEAR

CCI 1016094-01



# SAFETY DECALS

ITEM	PART NO.	DESCRIPTION	QTY
		<b>1 2 3 4</b>	
1	603 00 04-66	Decal, Crush Area Warning .....	2
2	603 00 11-06	Decal, Young Driver Warning .....	1
3	603 00 34-83	Decal, Warning, AWD ROPS .....	1
4	525 32 82-97	Decal, Operation, Bed Latch .....	1
5	525 76 64-01	Decal, Brake Fluid, Dot 5 .....	1
6	525 79 70-01	Decal, Warn, Co, Cab .....	1

3

G

**OPERATING INSTRUCTIONS**

- Read owner's manual and vehicle safety warnings.
- Study and understand controls.
- FASTEN SEAT BELTS** before operating vehicle.

**TO START ENGINE**

- Place shift lever in NEUTRAL (N) and press brake pedal.
- Turn key to START and hold until engine starts.

**TO OPERATE VEHICLE**

- Turn wheels to desired direction and ensure path is clear.
- With vehicle stopped and engine at idle, select vehicle direction:  
F - Forward, N - Neutral, R - Reverse
- Use lever to select 4 X 2 or 4 X 4, if so equipped.
- Use lever to lock or unlock the differential.
- Hold brake pedal and release park brake.
- Slowly press accelerator pedal to increase speed.
- Stop the vehicle before shifting to Forward or Reverse.
- Stop the vehicle before locking or unlocking the differential.

**TO STOP VEHICLE**

- Release accelerator pedal and push brake pedal.

**BEFORE LEAVING VEHICLE**

- Turn key to OFF and remove key.
- Place shift lever in NEUTRAL (N).
- Firmly set park brake.

**WARNING**  
**ROLLOVER OR FALLING OFF MAY CAUSE DEATH**

- Read owner's manual and operating instructions.
- FASTEN SEAT BELTS.** Remain seated while moving.
- Drive slowly in turns.
- Drive straight up and down slopes.
- Do not start vehicle until all occupants are seated.
- Two (2) persons per bench seat maximum.
- Operate from driver side only and not on public roads.
- Keep entire body inside vehicle while moving.
- Children requiring a child safety seat must not ride on vehicle. Comply with state and local laws pertaining to child safety.
- Do not operate while under the influence of alcohol or drugs.
- Unlock differential on paved surfaces to maintain steering control.
- Never attempt jumps.

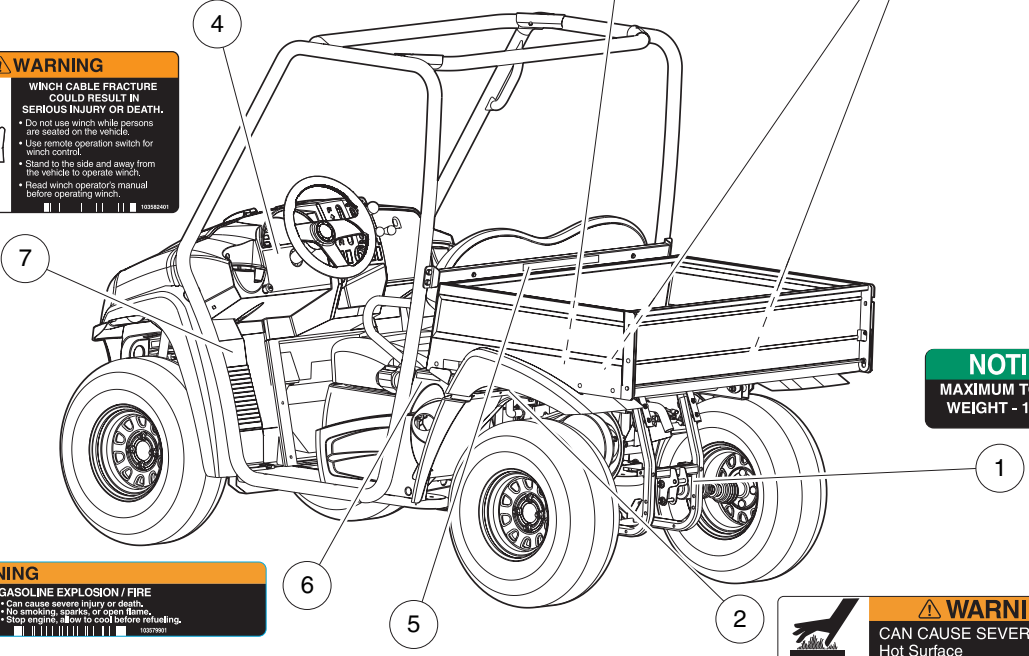
**WARNING**  
Negative frame ground. Can cause severe injury. Do not contact positive (+) battery post or cables to frame. Disconnect negative battery cable first.

**WARNING**  
Excessive speed can cause severe injury or death. Do not tamper with engine governor adjustment. 10326001

**WARNING**  
CAN CAUSE SEVERE INJURY  
Rotating parts. KEEP CLEAR. CCI 102460201

**WARNING**  
WINCH CABLE FRACTURE COULD RESULT IN SERIOUS INJURY OR DEATH.

- Do not use winch while persons are seated on the vehicle.
- Use remote operation switch for winch control.
- Stand to the side and away from the vehicle to operate winch.
- Read winch operator's manual before operating winch.



**NOTICE**  
MAXIMUM TONGUE WEIGHT - 150 lbs.  
CCI 1011553

**WARNING**  
GASOLINE EXPLOSION / FIRE

- Can cause severe injury or death.
- No smoking, sparks, or open flame.
- Stop engine, allow to cool before refueling.

**WARNING**  
CAN CAUSE SEVERE BURNS  
Hot Surface CCI 102458901

**VEHICLE LOADING**

- Read owner's manual and warnings on dash.
- Maximum gross vehicle weight: 2135 lb. (968 kg)
- Maximum cargo load: 400 lb. (181 kg)
- Includes cargo bed load and gross trailer weight.
- Maximum cargo load is reduced by the weight of optional equipment.
- Maximum trailer hitch tongue weight: 150 lb. force (67 N).

**PREVENT VEHICLE ROLL-OVER:**

- Place cargo forward in the cargo bed and distribute evenly side to side. Secure load.
- On uneven or steep terrain reduce speed and load. Avoid stopping on or backing down steep hills.
- Avoid top-heavy loads. See owner's manual.

**WARNING**  
RIDING IN CARGO BED CAN CAUSE SEVERE INJURY OR DEATH.

- Do not ride in cargo bed.

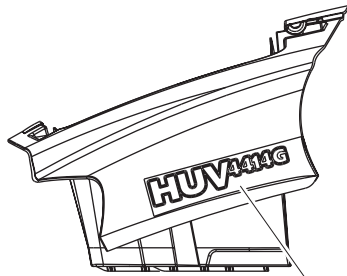


## SAFETY DECALS, CONTINUED

ITEM	PART NO.	DESCRIPTION	QTY
		<b>1 2 3 4</b>	
1	603 00 01-23	Decal, Trailer Hitch .....	1
2	603 00 11-02	Decal, Hot Surface Warning .....	1
3	603 00 11-09	Decal, Rotating Parts Warning .....	1
4	525 32 82-59	Decal, Operator, Warn/instr .....	1
5	525 32 82-96	Decal, Vehicle Loading, 2135lb .....	1
6	525 79 44-01	Decal, Warn, Gas Fuel Loading .....	1
7	525 79 46-01	Decal-winch, Warning .....	1
8	525 79 53-01	Decal, Frame Ground, Long .....	1

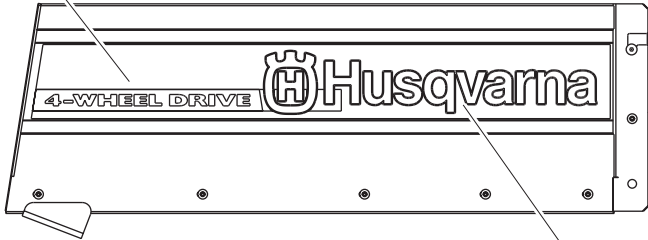
3

G



- 2
- 3
- 8
- 9
- 14
- 15
- 20
- 21
- 28
- 29
- 36
- 37

- 26
- 34
- 42



- 4
- 5
- 10
- 11
- 16
- 17
- 22
- 23
- 30
- 31
- 38
- 39



- 6
- 12
- 18
- 24
- 32
- 40

- 25
- 33
- 41

000881-004

# BADGING DECALS

ITEM	PART NO.	DESCRIPTION	QTY
		<b>1 2 3 4</b>	
1	N/A	Instl, Decal, Huv4214, Rthwd-g (includes items 2 through 6) .....	1
2	N/A	Decal, Cowl, 4214g, Ds, Rthw-g .....	1
3	N/A	Decal, Cowl, 4214g, Ps, Rthw-g .....	1
4	N/A	Decal, Bed, 4214/4414, Ds, Rth .....	1
5	N/A	Decal, Bed, 4214/4414, Ps, Rth .....	1
6	N/A	Decal, Tailgate, 4214/4414 .....	1
7	N/A	Instl, Decal, Huv4214, Orange (includes items 8 through 12) .....	1
8	N/A	Decal, Cowl, 4214g, Ds, Orange .....	1
9	N/A	Decal, Cowl, 4214g, Ps, Orange .....	1
10	N/A	Decal, Bed, 4214/4414, Ds, Org .....	1
11	N/A	Decal, Bed, 4214/4414, Ps, Org .....	1
12	N/A	Decal, Tailgate, 4214/4414 .....	1
13	N/A	Instl, Decal, Huv4214, Olv Grn (includes items 14 through 18) .....	1
14	N/A	Decal, Cowl, 4214g, Ds, Ol Grn .....	1
15	N/A	Decal, Cowl, 4214g, Ps, Ol Grn .....	1
16	N/A	Decal, Bed, 4214/4414, Ds, Og .....	1
17	N/A	Decal, Bed, 4214/4414, Ps, Og .....	1
18	N/A	Decal, Tailgate, 4214/4414 .....	1
19	N/A	Instl, Decal, Huv4414, Rthwd-g (includes items 20 through 26) .....	1
20	N/A	Decal, Cowl, 4414g, Ds, Rthw-g .....	1
21	N/A	Decal, Cowl, 4414g, Ps, Rthw-g .....	1
22	N/A	Decal, Bed, 4214/4414, Ds, Rth .....	1
23	N/A	Decal, Bed, 4214/4414, Ps, Rth .....	1
24	N/A	Decal, Tailgate, 4214/4414 .....	1
25	N/A	Decal, Tailgate, 4414, 4x4 .....	1
26	N/A	Decal, 4414, Four Wheel Drive .....	2
27	N/A	Instl, Decal, Huv4414, Orange (includes items 28 through 34) .....	1
28	N/A	Decal, Cowl, 4414g, Ds, Orange .....	1
29	N/A	Decal, Cowl, 4414g, Ps, Orange .....	1
30	N/A	Decal, Bed, 4214/4414, Ds, Org .....	1
31	N/A	Decal, Bed, 4214/4414, Ps, Org .....	1
32	N/A	Decal, Tailgate, 4214/4414 .....	1
33	N/A	Decal, Tailgate, 4414, 4x4 .....	1
34	N/A	Decal, 4414, Four Wheel Drive .....	2
35	N/A	Instl, Decal, Huv4414, Olv Grn (includes items 36 through 42) .....	1
36	N/A	Decal, Cowl, 4414g, Ds, Ol Grn .....	1
37	N/A	Decal, Cowl, 4414g, Ps, Ol Grn .....	1
38	N/A	Decal, Bed, 4214/4414, Ds, Og .....	1
39	N/A	Decal, Bed, 4214/4414, Ps, Og .....	1
40	N/A	Decal, Tailgate, 4214/4414 .....	1
41	N/A	Decal, Tailgate, 4414, 4x4 .....	1
42	N/A	Decal, 4414, Four Wheel Drive .....	2

3

G

3

G

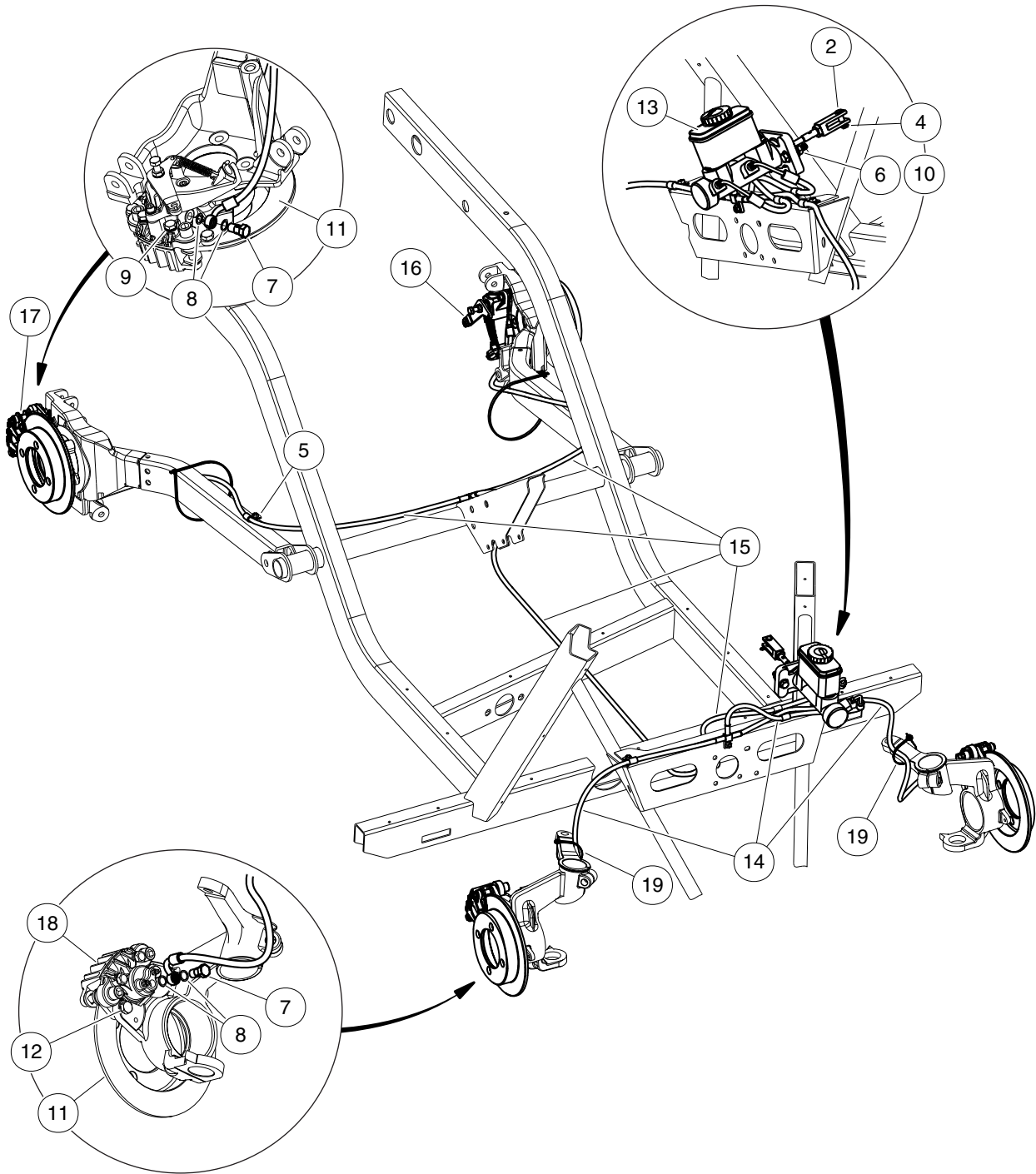
# BRAKE SYSTEMS

---

4

G

**4**  
**G**



000893-001

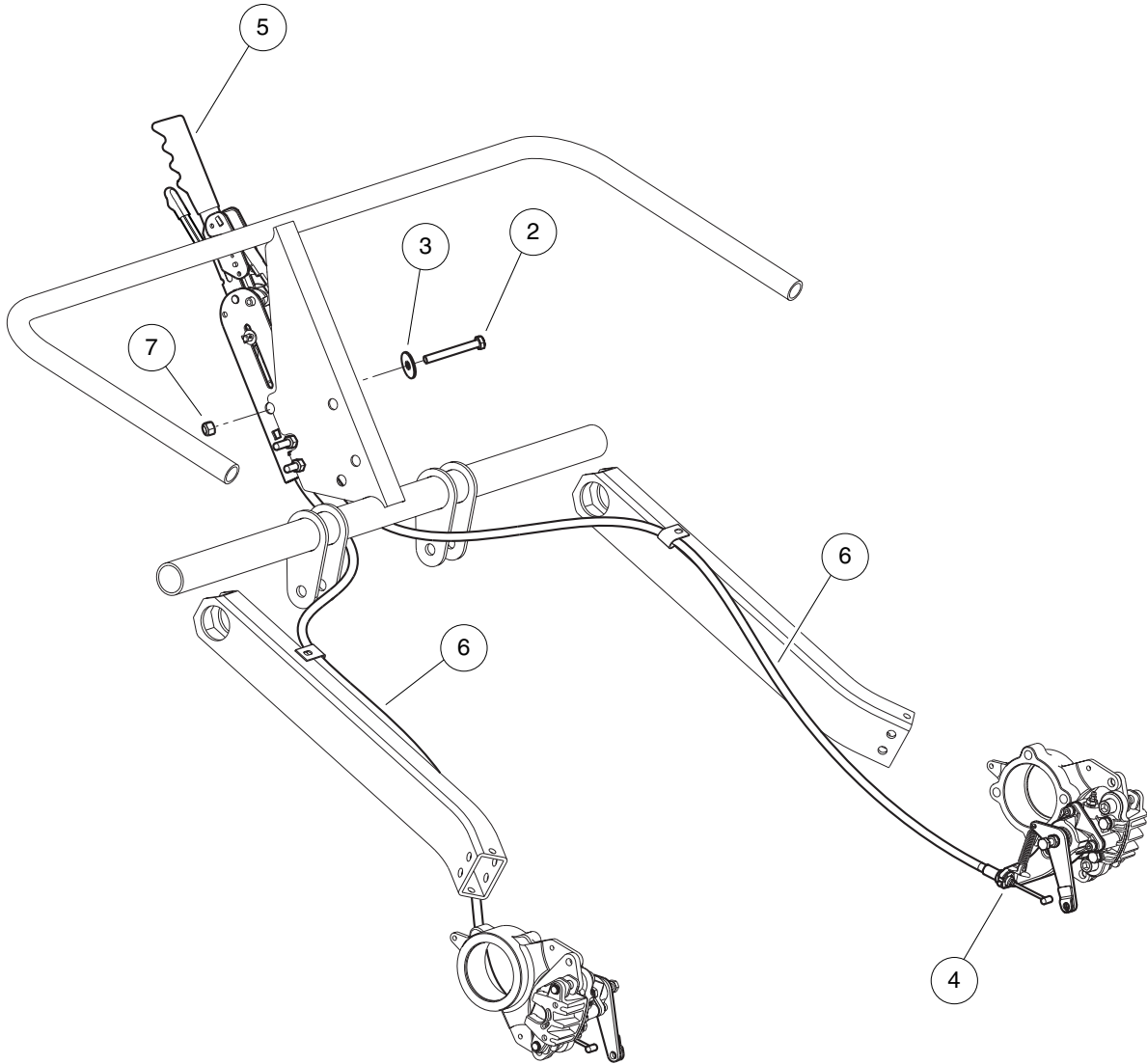
# BRAKE SYSTEM

ITEM	PART NO.	DESCRIPTION	QTY
		<b>1 2 3 4</b>	
1	N/A	Instl, Brake, Service (includes items 2 through 19) .....	A/R
2	603 00 04-54	Clevis Pin, 5/16 X 1 .....	1
3	N/A	Dot 5 Brake Fluid .....	A/R
4	603 00 07-98	Pin, Rue .....	1
5	603 00 08-74	Screw, M6 X 16 Tt Hx Fl Hd .....	7
6	603 00 12-98	Nut,m8,all Metal Lock .....	2
7	603 00 11-62	Bolt, Banjo, M10x1x19 .....	4
8	603 00 11-75	Washer, Copper, M10 Crush .....	8
9	603 00 11-83	Bolt Flange Head, 3/8-24x.750 with Loctite .....	4
10	603 00 13-07	Bolt Flanged Head, M8 X 1.25 X 35 .....	2
11	523 34 59-53	Rotor, Disc, Brake .....	4
12	523 34 59-83	Bolt, 3/8-24x 1.0 Loctite .....	4
13	603 00 44-91	Cylinder, Master, Integral Res .....	1
14	525 32 82-46	Assembly, Brake Line, Front .....	1
15	525 32 82-47	Assembly, Brake Line, Rear .....	1
16	525 32 82-91	Caliper, H-m, Rear, Lh .....	1
17	525 32 82-92	Caliper, H-m, Rear, Rh .....	1
18	525 79 31-01	Brk Caliper, Front, W/pad 7646 .....	2
19	603 00 00-93	Tie Wrap, 11" Nylon .....	2

4

G

**4**  
**G**



000894-001

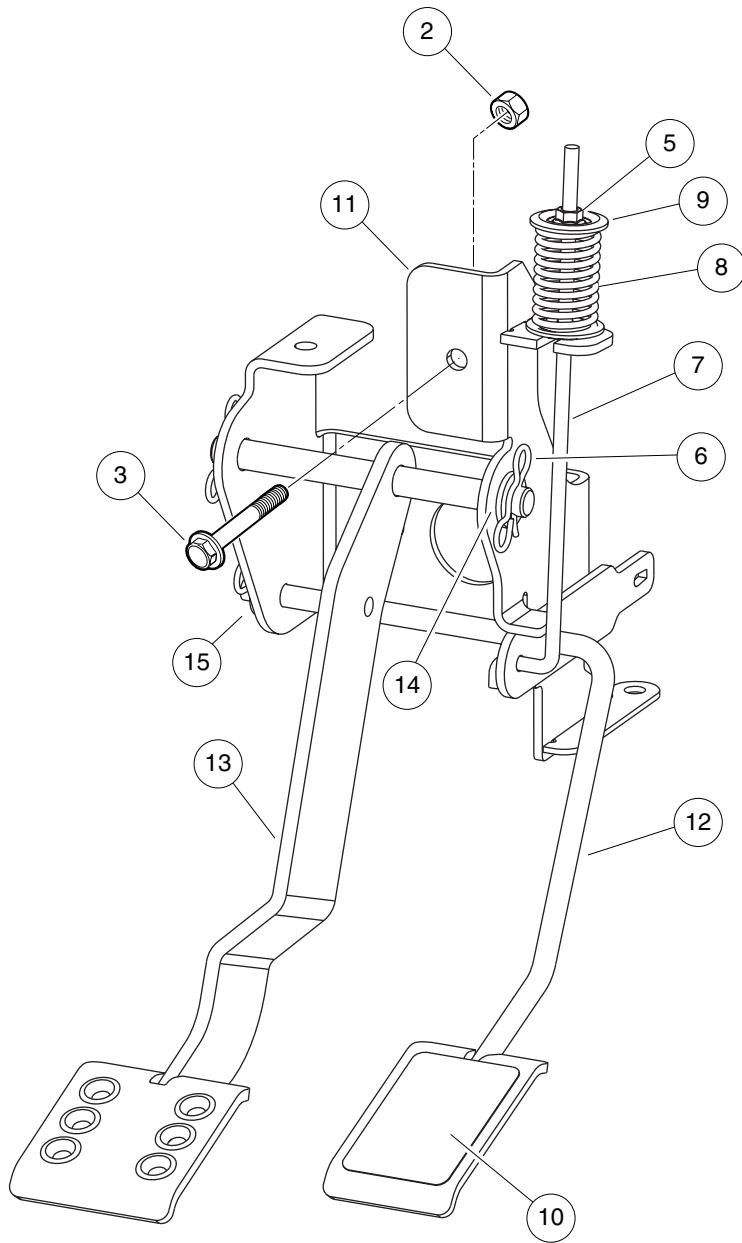


# PARK BRAKE SYSTEM

ITEM	PART NO.	DESCRIPTION	QTY
		<b>1 2 3 4</b>	
1	N/A	Instl, Brake, Park, Xrt (includes items 2 through 7) .....	1
2	603 00 01-15	Screw, 5/16-18 X 2.50 Hex Cap .....	3
3	603 00 30-45	Washer, 5/16 Type B Flat .....	6
4	603 00 01-30	E-Clip, 1/2 .....	2
5	525 76 62-01	Park Brake Assy, Overcentre .....	1
6	525 76 63-01	Cable, Park Brake, Overcentre .....	1
7	603 00 00-78	Locknut, 5/16-18 Nylon Insert .....	3

4

G



000895-001

# PEDAL GROUP

ITEM	PART NO.	DESCRIPTION	QTY
		<b>1 2 3 4</b>	
1	N/A	Instl, Group, Pedal (includes items 2 through 4) .....	1
2	603 00 12-98	Nut,m8,all Metal Lock .....	1
3	525 76 61-01	Bolt, Flg, M8 X X 60 .....	1
4	525 76 74-01	Asm, Group, Pedal (includes items 5 through 15) .....	1
5	603 00 12-99	Nut-m6x1.0 Flng All Mtl Lock .....	1
6	603 00 08-82	Pin, Bow Tie Locking .....	3
7	N/A	Pullrod, Spring, Compression .....	1
8	N/A	Spring, Comp, Pedal, Pullrod .....	1
9	N/A	Washer, Retaining Spring, 7mm .....	2
10	N/A	Pad, Grip Tape, Accelerator .....	1
11	N/A	Weldment, Brkt, Pedals .....	1
12	N/A	Weldment, Pedal, Accel, Kf .....	1
13	N/A	Weldment, Pedal, Brake, Kf .....	1
14	603 00 04-37	Washer, M12 Hard .....	2
15	603 00 04-51	Washer, M10 Hard .....	2

4

G

4

G