

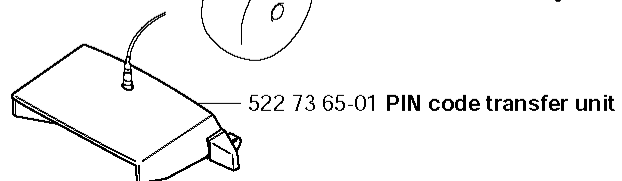
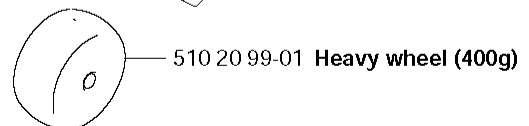
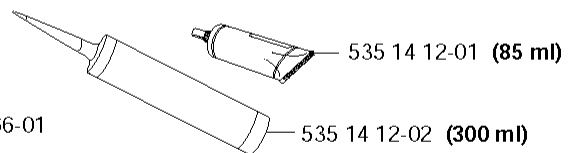
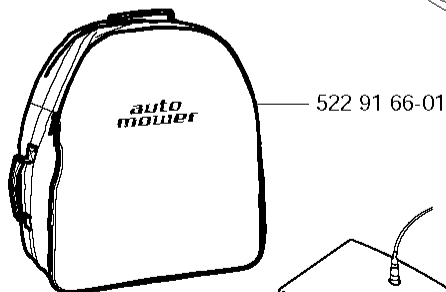
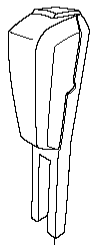
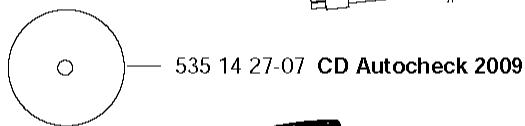
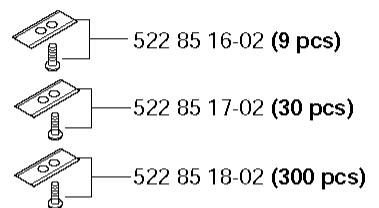
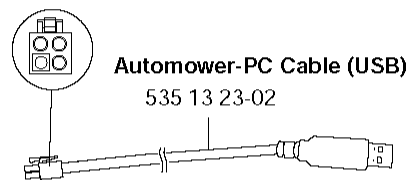
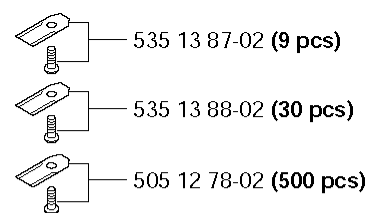
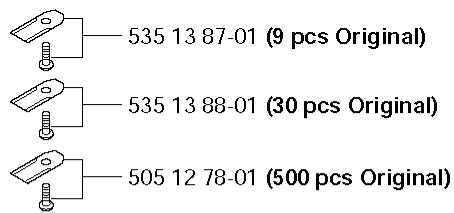


# SPARE PARTS LIST

ROBOTIC LAWN MOWERS

260 ACX, 2010-02

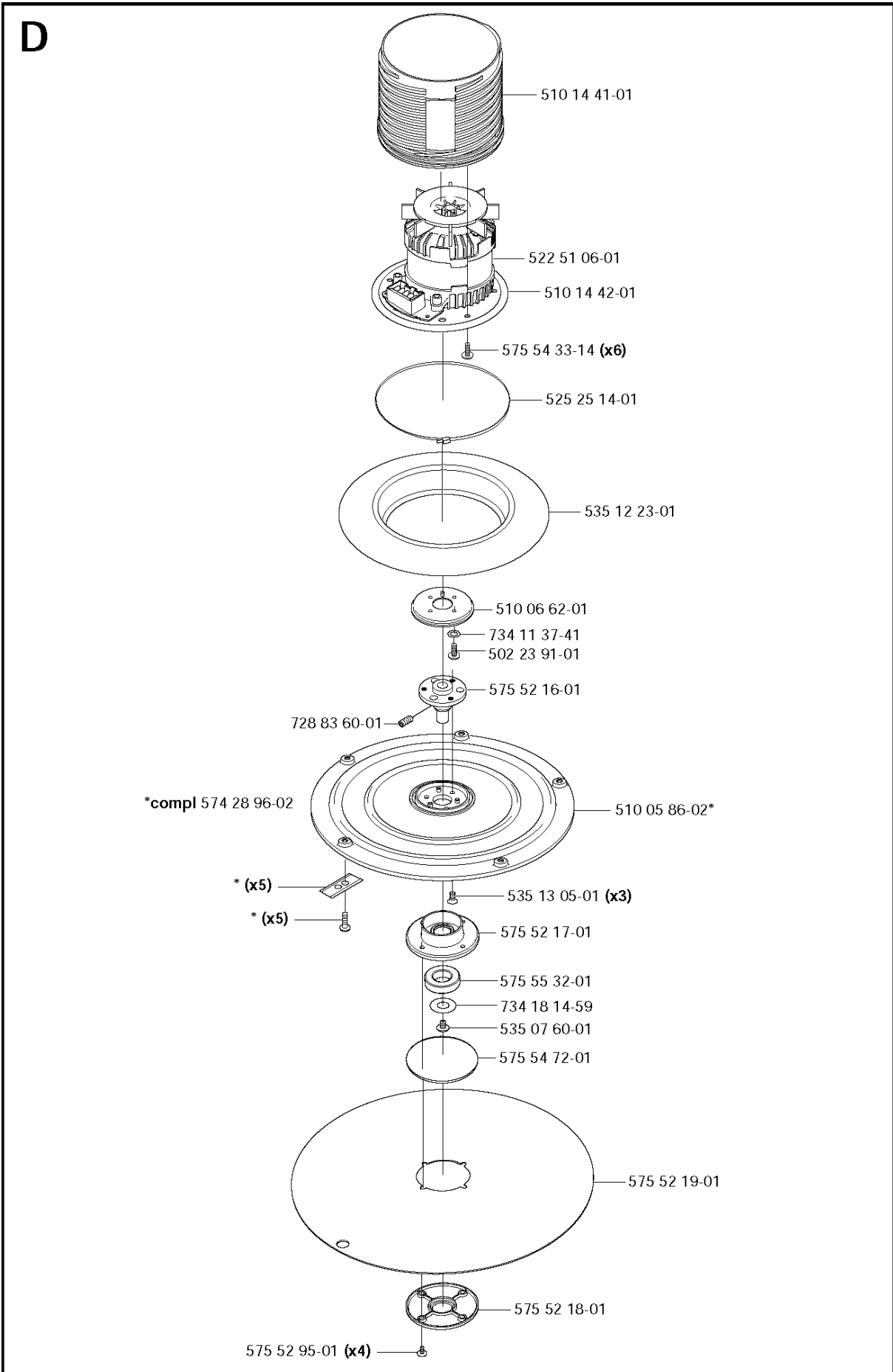
**H** Accessories  
Zubehöre  
Accessoires  
Acessorios  
Tillbehör



## ACCESSORIES

260 ACX, 2010-02

Part No	Description	Remark	QTY KIT
505 12 78-01	BLADE		1
505 12 78-02	BLADE		1
510 20 99-01	WHEEL		1
522 42 58-01	BOOSTER		1
522 73 65-01	ADAPTER		1
522 85 16-02	BLADE		1
522 85 17-02	BLADE		1
522 85 18-02	BLADE		1
522 91 66-01	BAG		1
535 13 23-02	WIRING		1
535 13 87-01	KIT		1
535 13 87-02	BLADE(9PCS)		1
535 13 88-01	KIT		1
535 13 88-02	BLADE 30PCS		1
535 14 12-01	SEALING		1
535 14 12-02	SEALING		1
535 14 27-07	AUTOMOWER CD		1

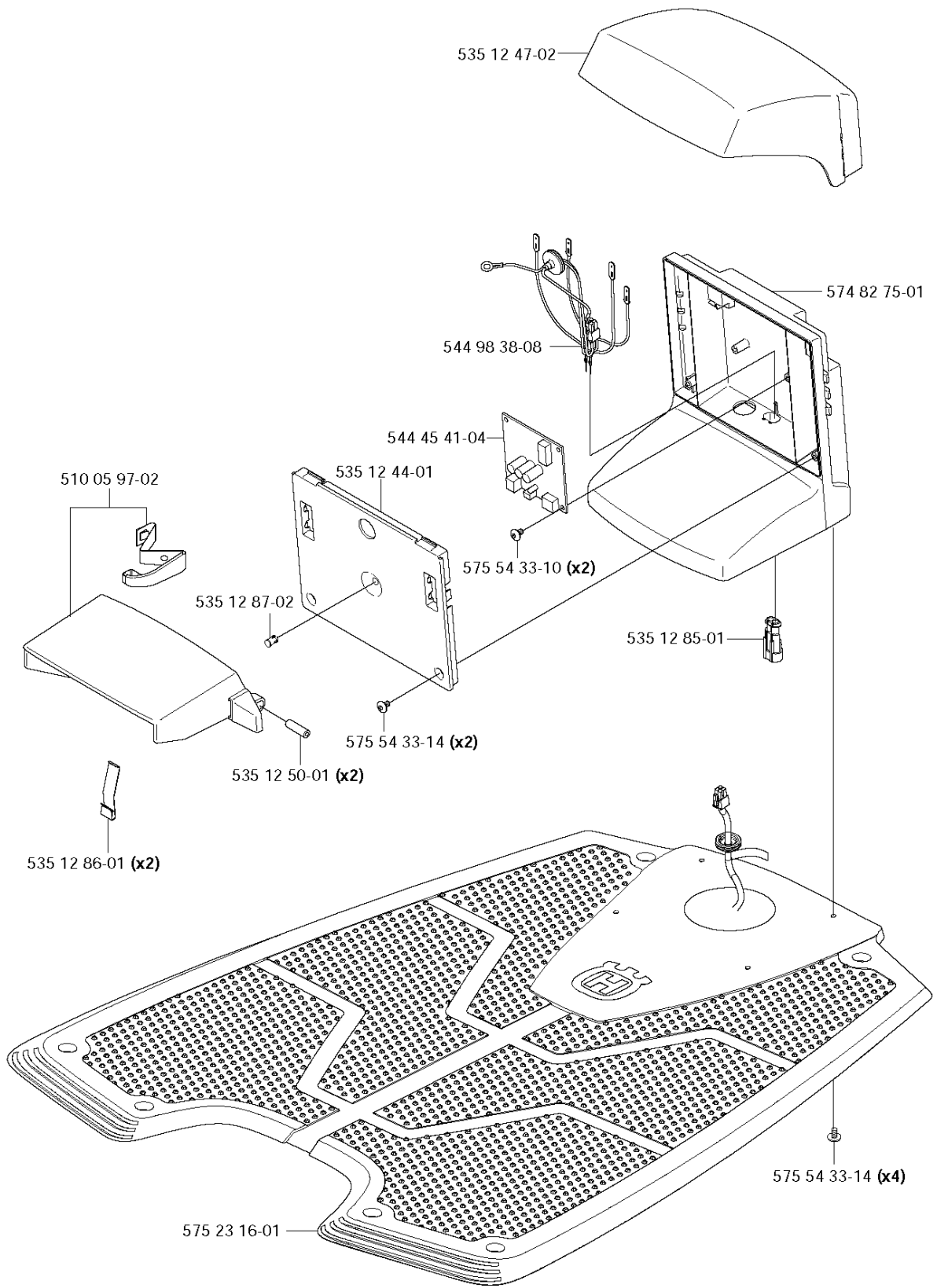


## BLADE MOTOR &amp; CUTTING EQUIPMENT

260 ACX, 2010-02

Part No	Description	Remark	QTY KIT
502 23 91-01	SCREW		1
510 05 86-02	DISC		1
510 06 62-01	COLLAR		1
510 14 41-01	MOTOR BOWL		1
510 14 42-01	DISC		1
522 51 06-01	CUTTING ENGINE		1
525 25 14-01	TIE WRAP		1
535 07 60-01	SCREW		1
535 12 23-01	RUBBER GAITERS		1
535 13 05-01	SCREW		3
574 28 96-02	KIT		1
575 52 16-01	HUB		1
575 52 17-01	BEARING BOX		1
575 52 18-01	BEARING COVER		1
575 52 19-01	SKID PLATE		1
575 52 95-01	SCREW ITPANTT		1
575 54 33-14	SCREW		6
575 54 72-01	O-RING		1
575 55 32-01	BALL BEARING		1
728 83 60-01	SCREW IHSETM		1
734 11 37-41	WASHER		1
734 18 14-59	WASHER		1

**E** compl 574 90 20-03

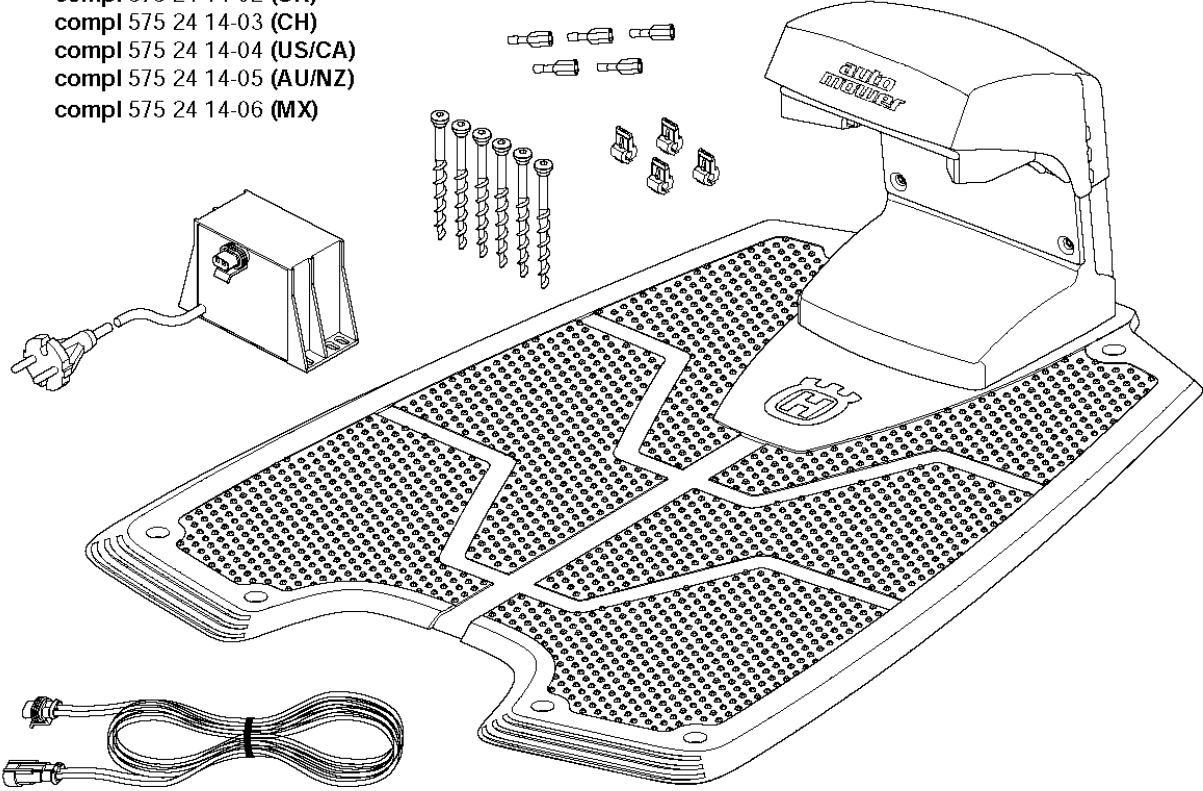


## CHARGING STATION

260 ACX, 2010-02

Part No	Description	Remark	QTY KIT
510 05 97-02	KIT		1
535 12 44-01	HUB CAP		1
535 12 47-02	COVER		1
535 12 50-01	PIN		2
535 12 85-01	CONTACT HOUSING		1
535 12 86-01	SPRING PLATE		2
535 12 87-02	DIODE LENS		1
544 45 41-04	CIRCUIT BOARD ASSY		1
544 98 38-08	WIRING ASSY		1
574 82 75-01	BODY		1
575 23 16-01	CHARGING PLATE		1
575 54 33-10	SCREW		2
575 54 33-14	SCREW		2
575 54 33-14	SCREW		1

- F** compl 575 24 14-01 (EU)
- compl 575 24 14-02 (UK)
- compl 575 24 14-03 (CH)
- compl 575 24 14-04 (US/CA)
- compl 575 24 14-05 (AU/NZ)
- compl 575 24 14-06 (MX)

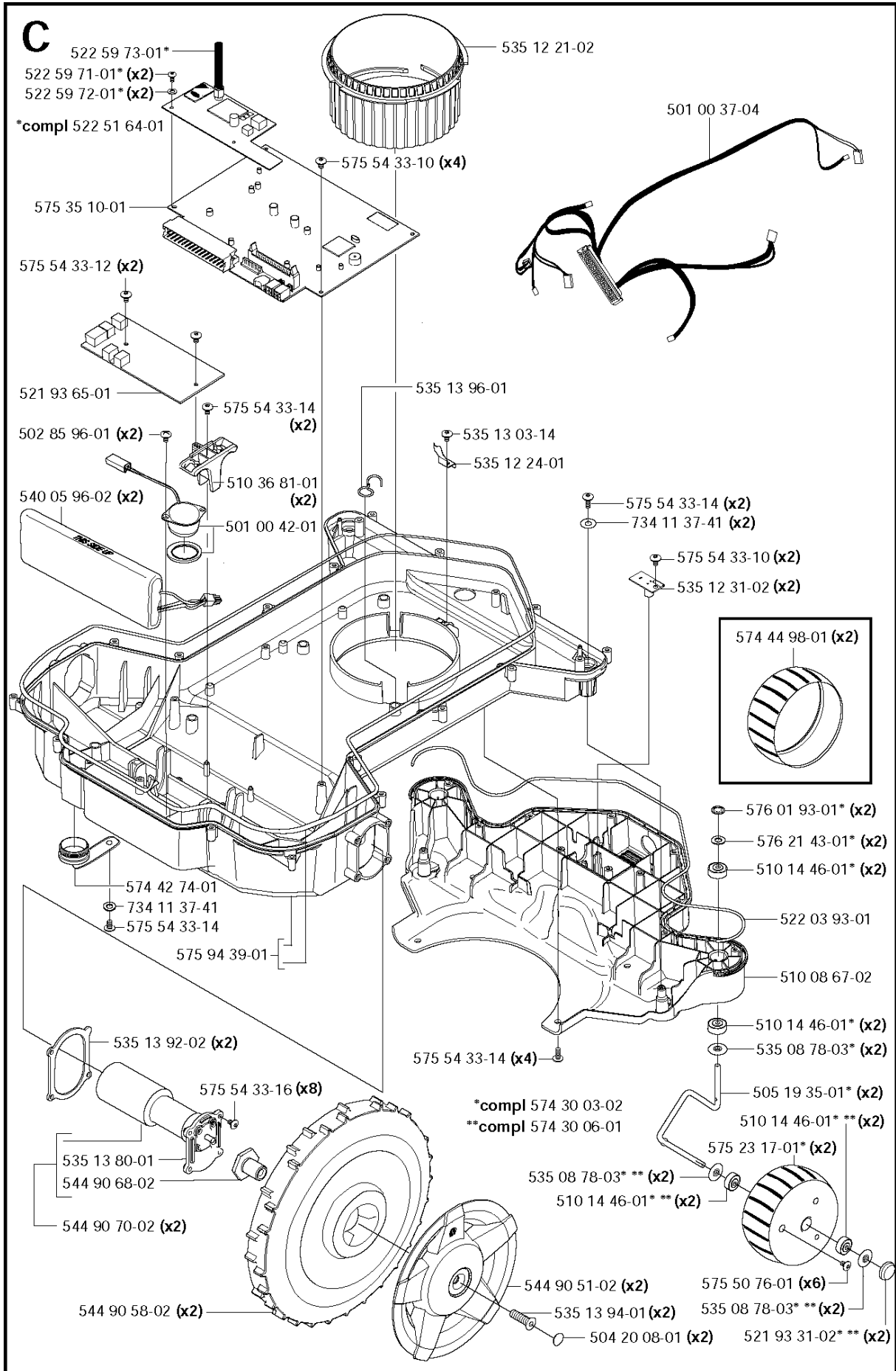




CHARGING STATION

260 ACX, 2010-02

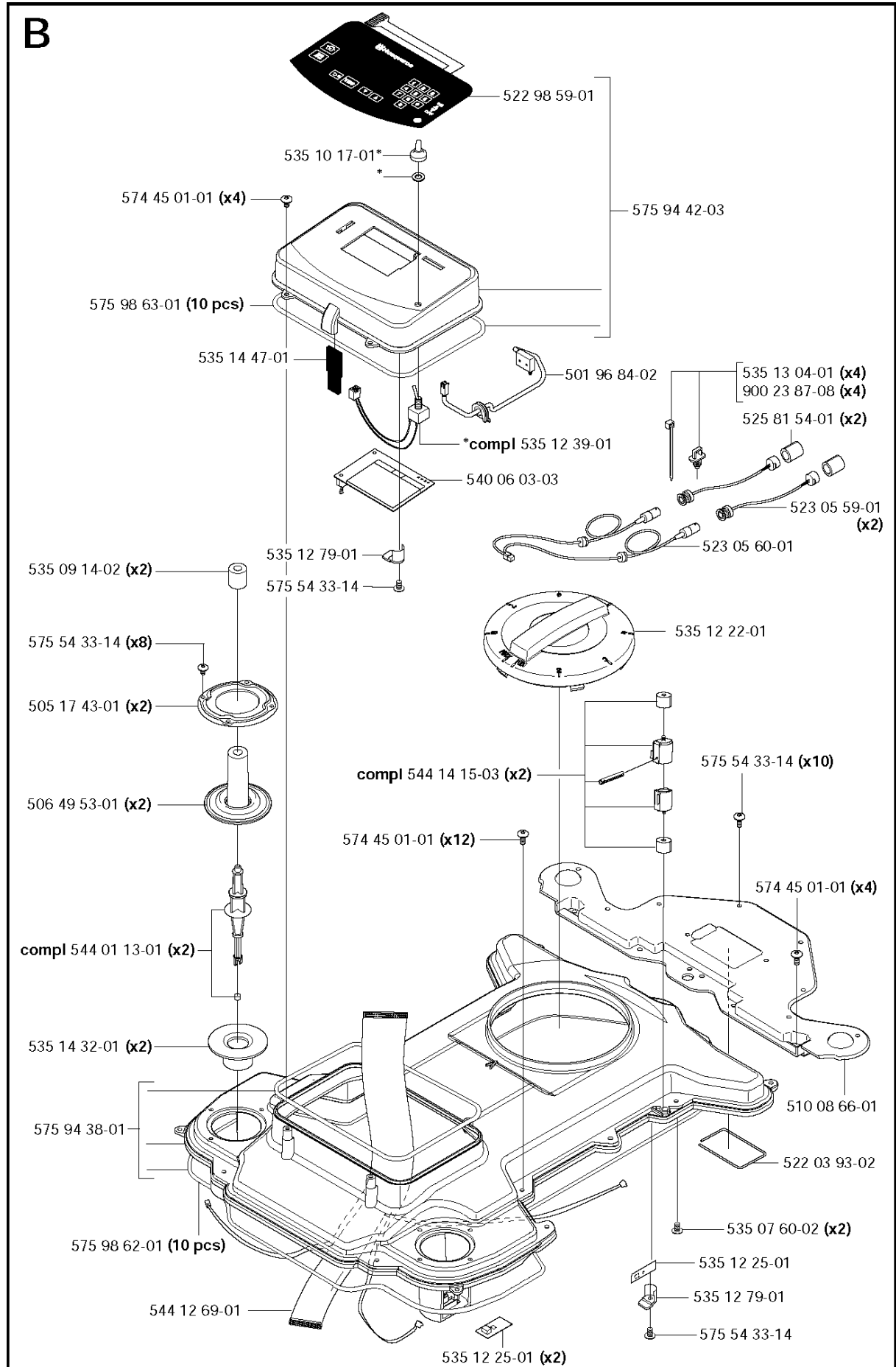
Part No	Description	Remark	QTY KIT
575 24 14-01	CHARGING STATION		1
575 24 14-02	CHARGING STATION		1
575 24 14-03	CHARGING STATION		1
575 24 14-04	CHARGING STATION		1
575 24 14-05	CHARGING STATION		1
575 24 14-06	CHARGING STATION		1



## CHASSIS LOWER

260 ACX, 2010-02

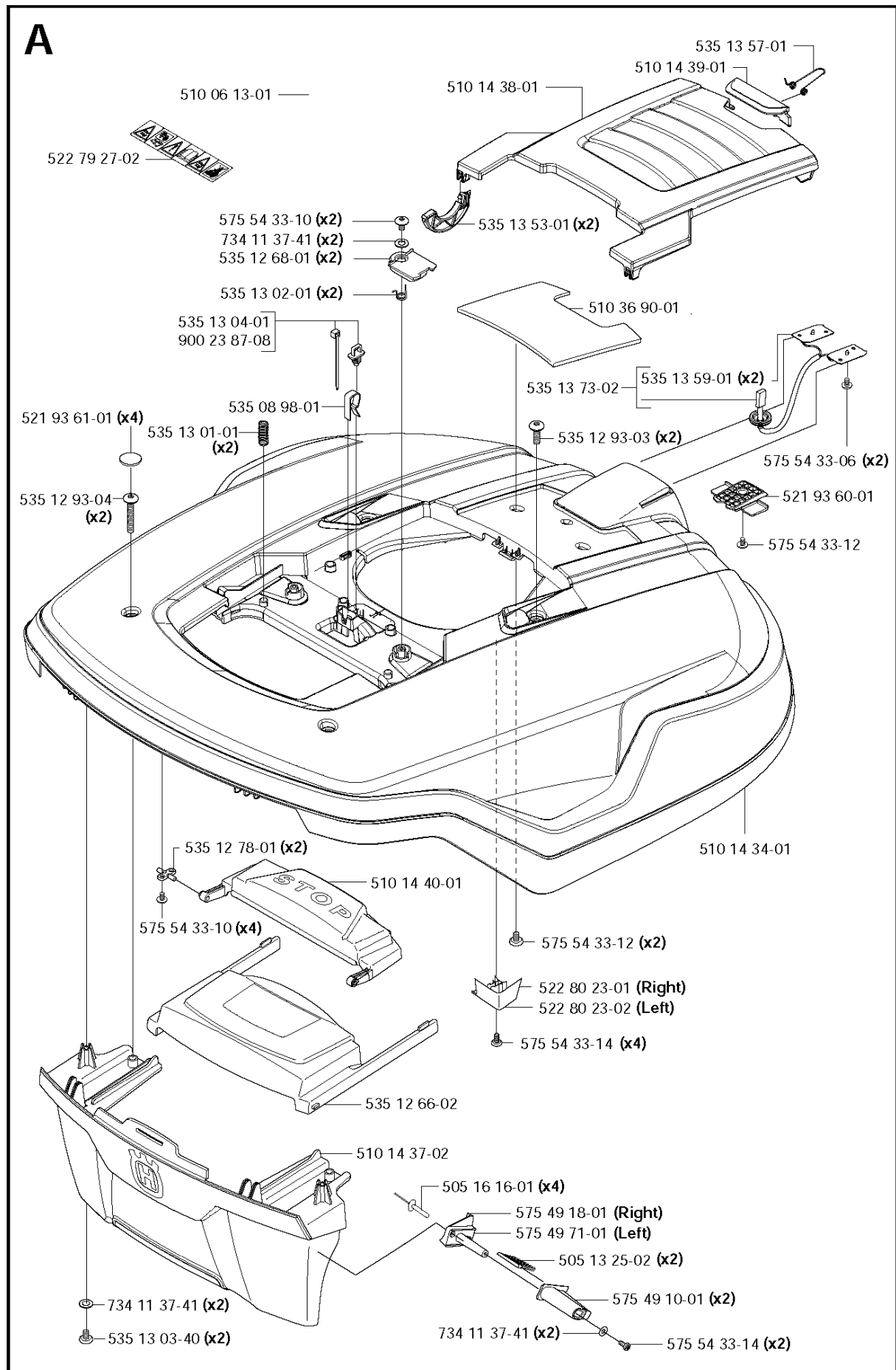
Part No	Description	Remark	QTY KIT
501 00 37-04	MAIN WIRING		1
501 00 42-01	LOUD SPEAKER		1
502 85 96-01	SCREW		2
504 20 08-01	COVER WASHER		2
505 19 35-01	SPINDLE		2
510 08 67-02	BRACKET		1
510 14 46-01	BALL BEARING		2
510 14 46-01	BALL BEARING		2
510 14 46-01	BALL BEARING		2
510 14 46-01	BALL BEARING		2
510 36 81-01	BRACKET		2
521 93 31-02	COVER WASHER		2
521 93 65-01	PRINTED CIRCUIT ASSY		1
522 03 93-01	SEALING RING		1
522 51 64-01	GSM MODULE		1
522 59 71-01	SCREW		2
522 59 72-01	WASHER		2
522 59 73-01	ANTENNA		1
535 08 78-03	WASHER		2
535 08 78-03	WASHER		2
535 08 78-03	WASHER		2
535 12 21-02	NUT		1
535 12 24-01	LOCKING SPRING		1
535 12 31-02	SENSOR CARD		2
535 13 03-14	SCREW ITPANT		1
535 13 80-01	MOTOR GABLE		1
535 13 92-02	GASKET		2
535 13 94-01	SCREW IHCSFM		2
535 13 96-01	CABLE HOLDER		1
540 05 96-02	BATTERY		2
544 90 51-02	HUB CAP		2
544 90 58-02	REAR WHEEL		2
544 90 68-02	HUB		1
544 90 70-02	DRIVE MOTOR		2
574 30 03-02	KIT		1
574 30 06-01	KIT		1
574 42 74-01	PLUG		1
575 23 17-01	WHEEL ASSY		2
575 35 10-01	PRINTED CIRCUIT ASSY		1
575 50 76-01	SCREW ITPANT		6
575 54 33-10	SCREW		4
575 54 33-10	SCREW		2
575 54 33-12	SCREW		2
575 54 33-14	SCREW		1
575 54 33-14	SCREW		2
575 54 33-14	SCREW		2
575 54 33-14	SCREW		4
575 54 33-16	SCREW		8
575 94 39-01	CHASSIS		1
576 01 93-01	LOCK WASHER		2
576 21 43-01	WASHER		2
734 11 37-41	WASHER		1
734 11 37-41	WASHER		2



## CHASSIS UPPER

260 ACX, 2010-02

Ref	Part No	Description	Remark	QTY KIT
522 98 59-01	522 98 59-01	KEYBOARD		1
575 94 42-03	575 94 42-03	DISPLAY COVER		1
535 10 17-01	535 10 17-01	HUB CAP		1
574 45 01-01	574 45 01-01	SCREW ITXPANT		4
575 98 63-01	575 98 63-02	SEALING STRIP		1
535 14 47-01	535 14 47-01	FILTER		1
535 12 79-01	535 12 79-01	BRACKET		1
575 54 33-14	575 54 33-14	SCREW		1
535 09 14-02	535 09 14-02	RUBBER DAMPER		2
575 54 33-14	575 54 33-14	SCREW		8
505 17 43-01	505 17 43-01	RING FASTENER		2
506 49 53-01	506 49 53-01	RUBBER GAITERS		2
544 01 13-01	544 01 13-01	COLUMN		2
501 96 84-02	501 96 84-02	SWITCH		1
535 12 39-01	535 12 39-01	MAIN SWITCH		1
540 06 03-03	540 06 03-03	DISPLAY		1
535 13 04-01	535 13 04-01	ANCHOR		4
900 23 87-08	900 23 87-08	TIE WRAP		4
525 81 54-01	525 81 54-01	TUBE		2
523 05 59-01	523 05 59-01	WIRING ASSY		2
523 05 60-01	523 05 60-01	WIRING ASSY		1
535 12 22-01	535 12 22-01	STEERING WHEEL		1
575 54 33-14	575 54 33-14	SCREW		10
574 45 01-01	574 45 01-01	SCREW ITXPANT		4
574 45 01-01	574 45 01-01	SCREW ITXPANT		12
544 14 15-03	544 14 15-03	SENSOR		2
544 01 13-01	544 01 13-01	COLUMN		2
510 08 66-01	510 08 66-01	BRACKET		1
522 03 93-02	522 03 93-02	SEALING RING		1
535 07 60-02	535 07 60-02	SCREW		2
535 12 25-01	535 12 25-01	SENSOR CARD		2
544 12 69-01	544 12 69-01	WIRING		1
575 98 62-01	575 98 62-02	SEALING STRIP		1
575 94 38-01	575 94 38-01	CHASSIS		1
535 14 32-01	535 14 32-01	DEFLECTION LIMITER		2
544 01 13-01	544 01 13-01	COLUMN		2

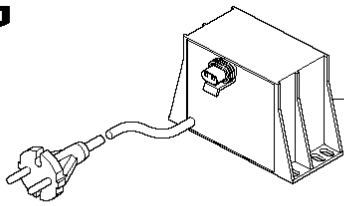


## COVER

260 ACX, 2010-02

Part No	Description	Remark	QTY KIT
505 13 25-02	BRUSH		2
505 16 16-01	RIVET		4
510 06 13-01	LOGOTYPE		1
510 14 34-01	MAIN BODY		1
510 14 37-02	MAIN BODY		1
510 14 38-01	LID		1
510 14 39-01	LATCH		1
510 14 40-01	BUTTON		1
510 36 90-01	PLATE		1
521 93 60-01	SPACER		1
521 93 61-01	COVER WASHER		4
522 79 27-02	LABEL WARNING		1
522 80 23-01	BRACKET	RIGHT	1
522 80 23-02	BRACKET	LEFT	1
535 08 98-01	CLIPS		1
535 12 66-02	COVER		1
535 12 68-01	LOCK CLAMP		2
535 12 78-01	SHAFT		2
535 12 93-03	SCREW IH PANM		2
535 12 93-04	SCREW IH PANM		2
535 13 01-01	SPRING		2
535 13 02-01	TORSION SPRING		2
535 13 03-40	SCREW ITXPANT		2
535 13 04-01	ANCHOR		1
535 13 53-01	PIVOT		2
535 13 57-01	TORSION SPRING		1
535 13 59-01	CHARGING PLATE		2
535 13 73-02	WIRING		1
575 49 10-01	BRUSH HOLDER		2
575 49 18-01	BRACKET	RIGHT	1
575 49 71-01	BRACKET	LEFT	1
575 54 33-06	SCREW		2
575 54 33-10	SCREW		2
575 54 33-10	SCREW		4
575 54 33-12	SCREW		1
575 54 33-12	SCREW		2
575 54 33-14	SCREW		2
575 54 33-14	SCREW		4
734 11 37-41	WASHER		2
734 11 37-41	WASHER		2
734 11 37-41	WASHER		2
900 23 87-08	TIE WRAP		1

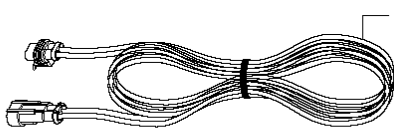
**G**



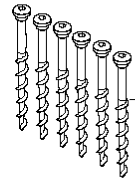
- 522 78 24-01 (EU)
- 522 78 24-02 (UK/IRL)
- 522 78 24-03 (CH)
- 522 78 24-04 (US)
- 522 78 24-05 (AU/NZ)
- 522 78 24-06 (MX)



504 04 97-01 (100 pcs)



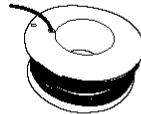
535 12 73-06 (20 m)



575 23 86-01 (6 pcs)



529 28 08-01



501 98 03-02 (150 m)



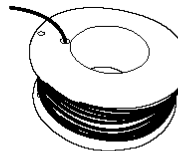
535 12 90-01



501 98 03-01 (250 m)



501 98 02-01 (1 pcs)



522 91 41-01 (500 m, Ø3.4 mm)



501 98 02-02 (50 pcs)



525 63 70-01



535 13 16-01



## INSTALLATION ACCESSORIES

260 ACX, 2010-02

Part No	Description	Remark	QTY KIT
501 98 02-01	COUPLER		1
501 98 02-02	COUPLER		1
501 98 03-01	WIRE		1
501 98 03-02	WIRE		1
504 04 97-01	STAPLE		1
522 78 24-01	TRANSFORMER		1
522 78 24-02	TRANSFORMER		1
522 78 24-03	TRANSFORMER		1
522 78 24-04	TRANSFORMER		1
522 78 24-05	TRANSFORMER		1
522 91 41-01	WIRE		1
525 63 70-01	MEASURING ROD		1
529 28 08-01	TERMINAL		1
535 12 73-06	CABLE		1
535 12 90-01	COUPLER		1
535 13 16-01	LABEL		1
575 23 86-01	SCREW KIT		1