



LDX Cultivator Att.

Spare parts

Ersatzteile

Pièces détachées

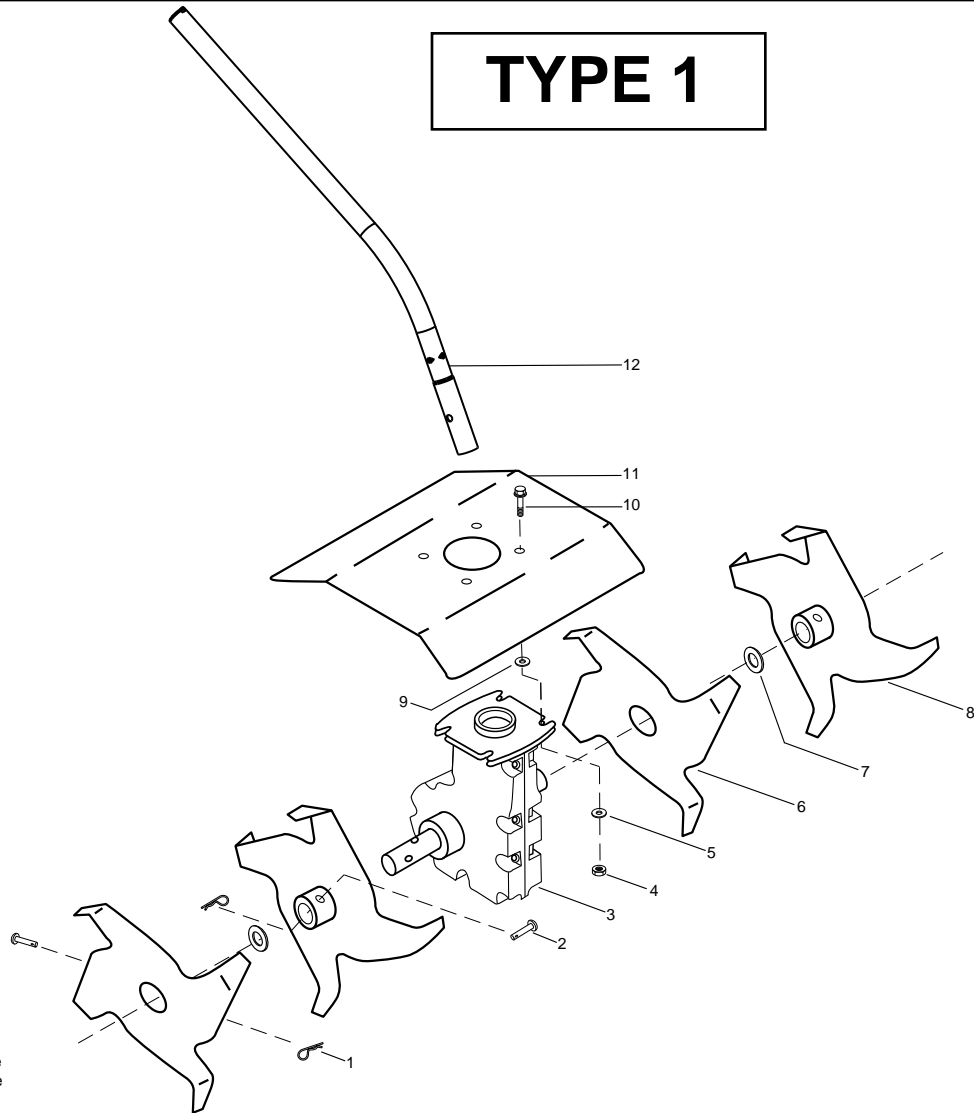
Reserve onderdelen

Repuestos

Reservdelar

Parts List No. 545014399		UNIVERSAL PARTS LIST	MODEL LDX Cultivator Att.
Date 8/04/11	Replaced 545014399 - 2/02/10		NOTE : Illustration may differ from actual model due to design changes.

TYPE 1



⚠ WARNING
All repairs, adjustments and maintenance not described in the Operator's Manual must be performed by Qualified Service Personnel.

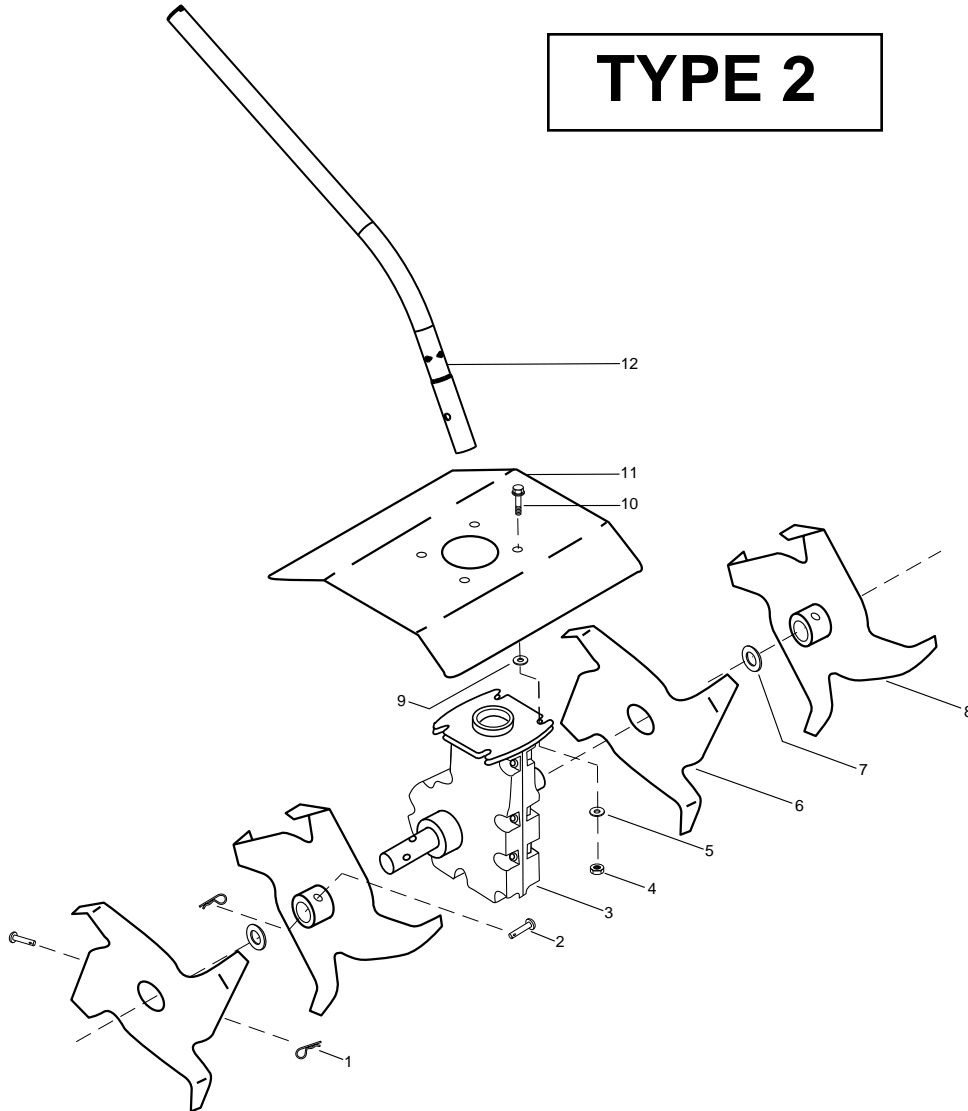
Ref.	Part No.	Description	Ref.	Part No.	Description
1.	530016363	Retainer - Hairpin			
2.	530016362	Pin - Clevis			
3.	545141901	Assy-Gearbox			
4.	530015515	Locknut			
5.	530015209	Washer - Flat			
6.	530095987	Tine - Right Outside / Left Inside			
7.	530016364	Washer - Felt			
8.	530095986	Tine - Left Outside / Right Inside			
9.	530015209	Washer - Flat			
10.	530016366	Bolt - Washer Head			
11.	530071479	Kit - Blade Guard			
12.	545006080	Kit - Driveshaft Assy. (Incl. flex.)		545002805	Decal-Shaft Warning

✓ = New Part Number For This IPL

★ = Refer to the Service Reference Indicated for more information.(Located at the END of the IPL)

Parts List No. 545014399		UNIVERSAL PARTS LIST	MODEL LDX Cultivator Att.
Date 8/04/11	Replaced 545014399 - 2/02/10		NOTE : Illustration may differ from actual model due to design changes.

TYPE 2



⚠ WARNING
All repairs, adjustments and maintenance not described in the Operator's Manual must be performed by Qualified Service Personnel.

Ref.	Part No.	Description	Ref.	Part No.	Description
1.	530016363	Retainer - Hairpin			
2.	530016362	Pin - Clevis			
3.	545141901	Assy-Gearbox			
4.	530015515	Locknut			
5.	530015209	Washer - Flat			
6.	530095987	Tine - Right Outside / Left Inside			
7.	530016364	Washer - Felt			
8.	530095986	Tine - Left Outside / Right Inside			
9.	530015209	Washer - Flat			
10.	530016366	Bolt - Washer Head			
11.	530071479	Kit - Blade Guard			
12.	545006080	Kit - Driveshaft Assy. (Incl. flex.)	✓	578667001	Decal-Shaft Warning

✓ = New Part Number For This IPL

★ = Refer to the Service Reference Indicated for more information.(Located at the END of the IPL)