

# LTH19530

**Spare parts**

**Ersatzteile**

**Pièces détachées**

**Reserve onderdelen**

**Repuestos**

**Reservdelar**

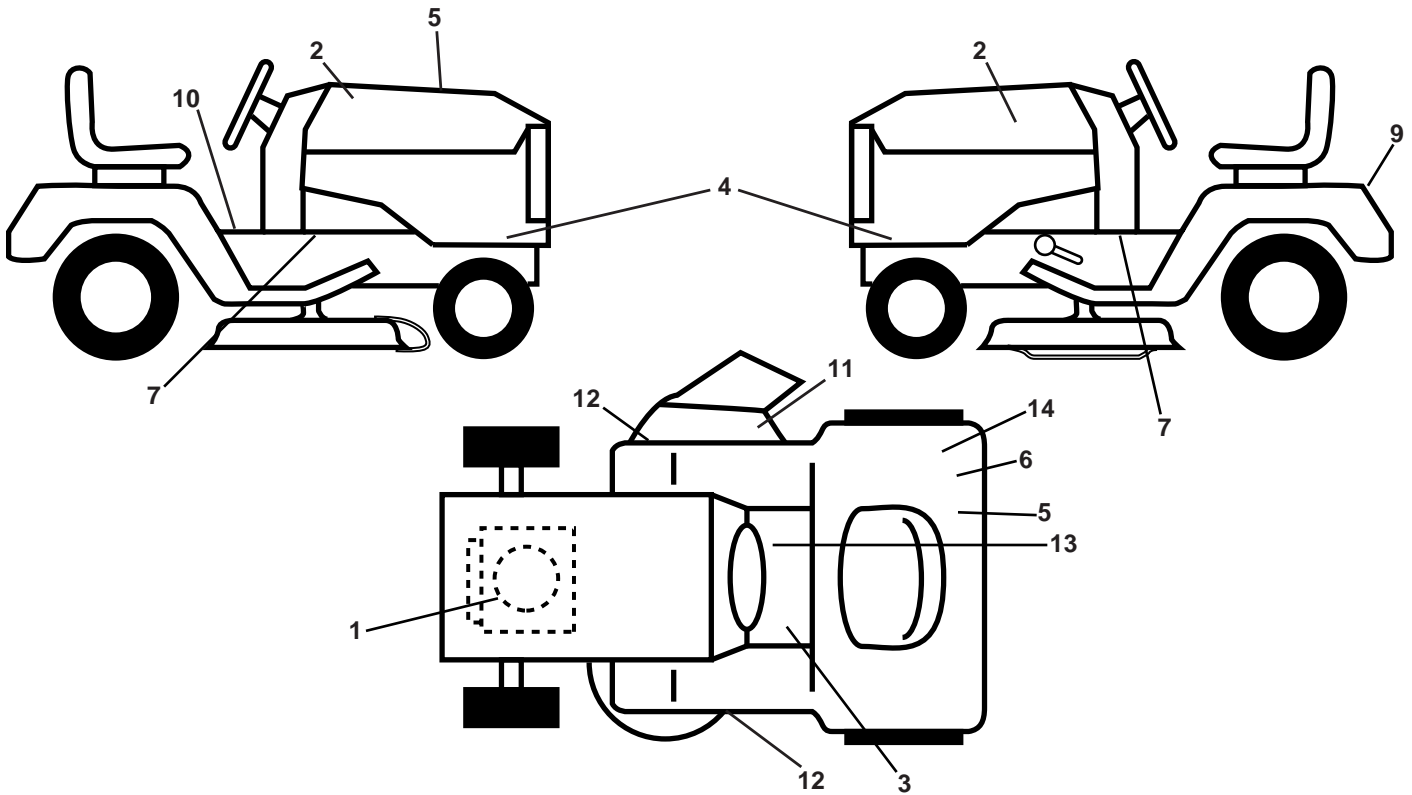
# **ILLUSTRATED PARTS LIST**

**MFG. ID NO. 96041016900**

**CUSTOMER CATALOG NO. LTH19530**

**PRODUCT NO. 960 41 01-69**

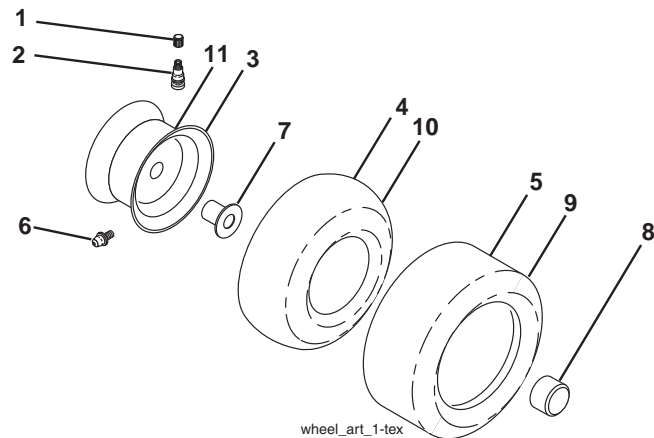
**TRACTOR - - MODEL NO. LTH19530 (96041016900), PRODUCT NO. 960 41 01-69  
DECALS 27**



| KEY NO. | PART NO.     | DESCRIPTION                   |
|---------|--------------|-------------------------------|
| 1       | 532 19 68-41 | Decal, Warning Engine Symbols |
| 2       | 532 42 91-96 | Decal, Badge                  |
| 3       | 532 17 83-02 | Decal, Oper Cruise Symbol     |
| 4       | 532 43 39-86 | Decal, Side Panel             |
| 5       | 532 43 37-78 | Decal, Rpl.                   |
| 6       | 532 15 97-37 | Decal, Brake Clutch           |
| 7       | 532 15 97-36 | Decal, Chassis Hot Muffler    |
| 9       | 532 14 50-05 | Decal, Battery Dnge/Poi       |
| 10      | 532 40 03-89 | Decal, Warning Symbols        |
| 11      | 532 42 51-12 | Decal, Warning Deflector      |

| KEY NO. | PART NO.     | DESCRIPTION                   |
|---------|--------------|-------------------------------|
| 12      | 532 42 15-43 | Decal, Mower V-Belt Schematic |
| 13      | 532 14 08-37 | Decal, Saddle Brake Parking   |
| 14      | 532 12 44-33 | Decal, 80 DBA Australia       |
| --      | 532 16 25-98 | Decal, Drawbar Load Limit     |
| --      | 532 16 69-60 | Decal, Bypass                 |
| --      | 532 41 08-05 | Pad, Footrest, LH             |
| --      | 532 41 08-06 | Pad, Footrest, RH             |
| --      | 532 43 39-92 | Manual, Operators (English)   |

**WHEELS AND TIRES**



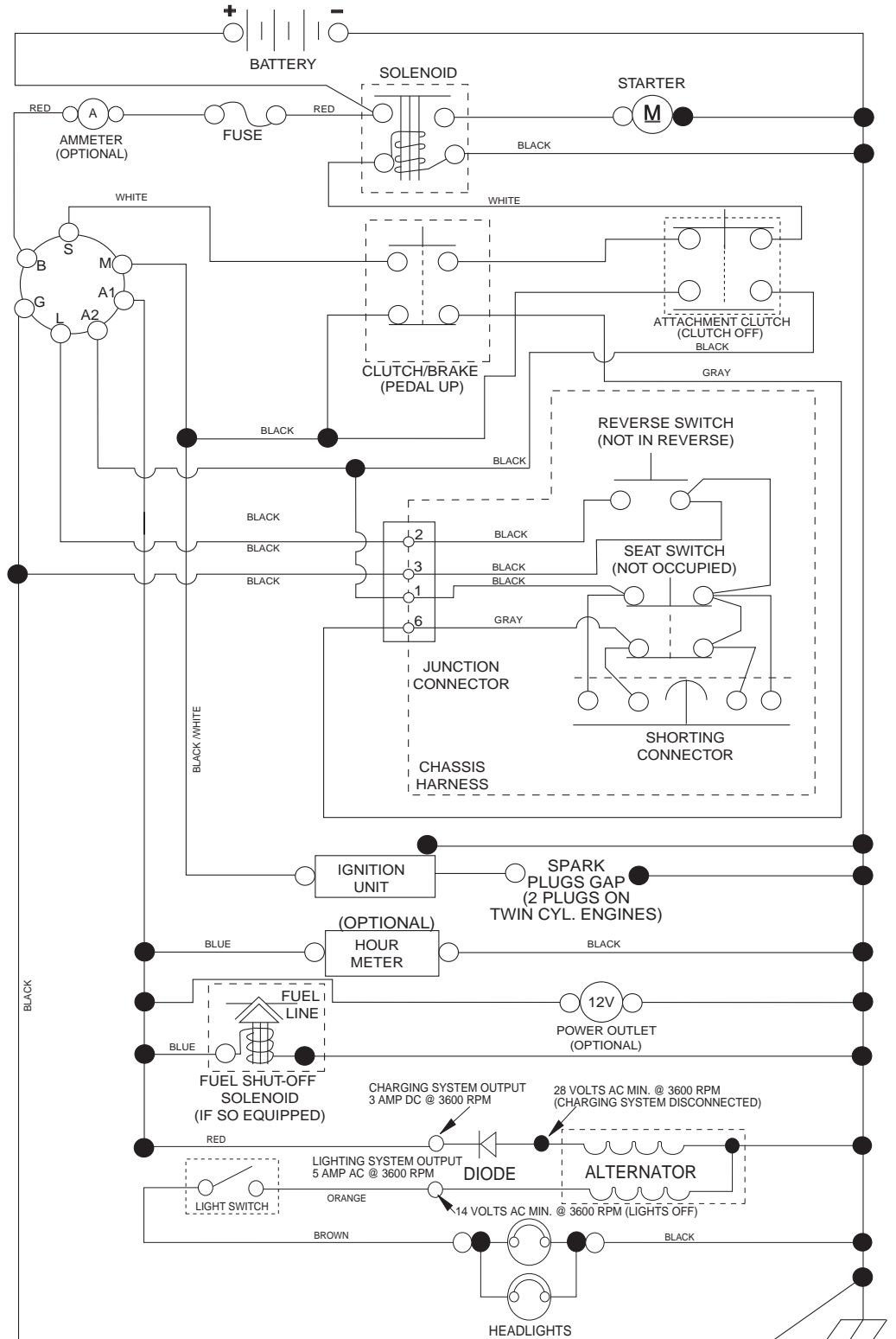
| KEY NO. | PART NO.     | DESCRIPTION                       |
|---------|--------------|-----------------------------------|
| 1       | 532 05 91-92 | Cap Valve Tire                    |
| 2       | 532 06 51-39 | Stem Valve                        |
| 3       | 532 42 52-61 | Rim Asm 6" x 3.25 Front           |
| 4       | 532 42 16-52 | Tube Front (Service Item Only)    |
| 5       | 532 12 34-10 | Tire Front 13 x 5.0-6             |
| 6       | 532 12 49-57 | Fitting Grease (Front Wheel Only) |
| 7       | 532 12 49-59 | Bearing Flange (Front Wheel Only) |
| 8       | 532 17 50-39 | Cap Axle Blk 1 50 x 1 00          |
| 9       | 532 10 62-30 | Tire Rear 16 x 6 - 5              |
| 10      | 532 00 71-54 | Tube Rear (Service Item Only)     |
| 11      | 532 42 52-62 | Rim Asm 8" x 5.375 Rear           |
| --      | 532 14 43-34 | Sealant, Tire (10 oz. Tube)       |

**NOTE:** All component dimensions given in U.S. inches  
1 inch = 25.4 mm

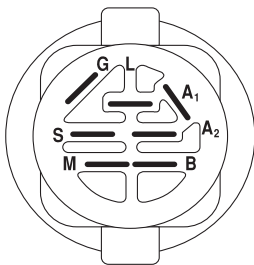
# TRACTOR - - MODEL NO. LTH19530 (96041016900), PRODUCT NO. 960 41 01-69

## SCHEMATIC 38

SCH11

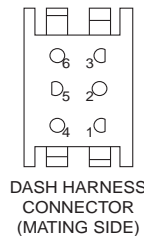
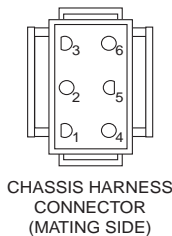


**NOTE**  
YOUR TRACTOR IS EQUIPPED WITH A SPECIAL ALTERNATOR SYSTEM. THE LIGHTS ARE NOT CONNECTED TO THE BATTERY, BUT HAVE THEIR OWN ELECTRICAL SOURCE. BECAUSE OF THIS, THE BRIGHTNESS OF THE LIGHTS WILL CHANGE WITH ENGINE SPEED. AT IDLE THE LIGHTS WILL DIM. AS THE ENGINE IS SPEEDED UP, THE LIGHTS WILL BECOME THEIR BRIGHTEST.



IGNITION SWITCH

| POSITION     | CIRCUIT | "MAKE" |
|--------------|---------|--------|
| OFF          | M+G+A1  |        |
| RUN/OVERRIDE | B+A1    |        |
| RUN          | B+A1    | L+A2   |
| START        | B+S+A1  |        |

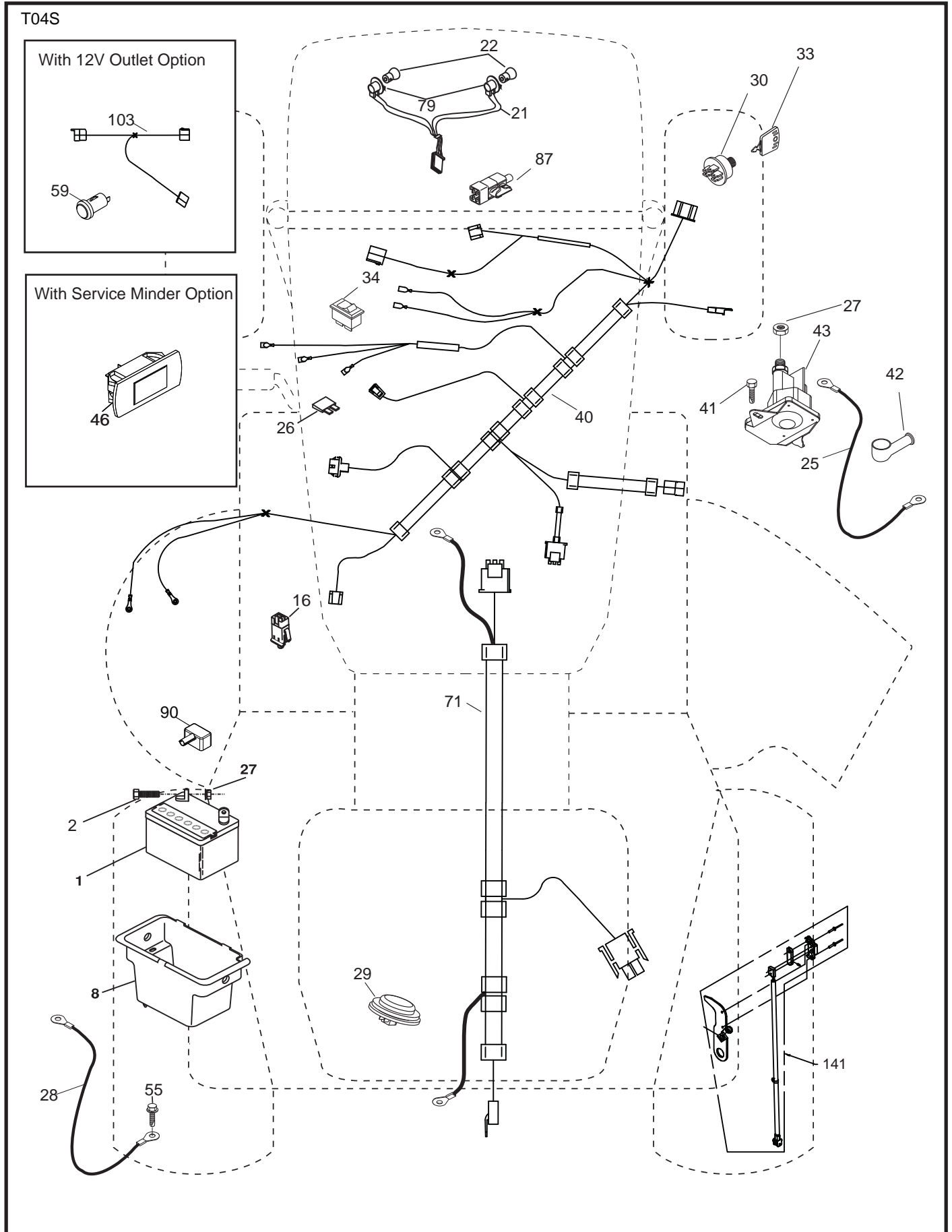


WIRING INSULATED CLIPS  
NOTE: IF WIRING INSULATED CLIPS WERE REMOVED FOR SERVICING OF UNIT, THEY SHOULD BE RE-INSTALLED TO PROPERLY SECURE YOUR WIRING.

NON-REMOVABLE CONNECTIONS

REMOVABLE CONNECTIONS

TRACTOR - - MODEL NO. LTH19530 (96041016900), PRODUCT NO. 960 41 01-69  
ELECTRICAL **32**

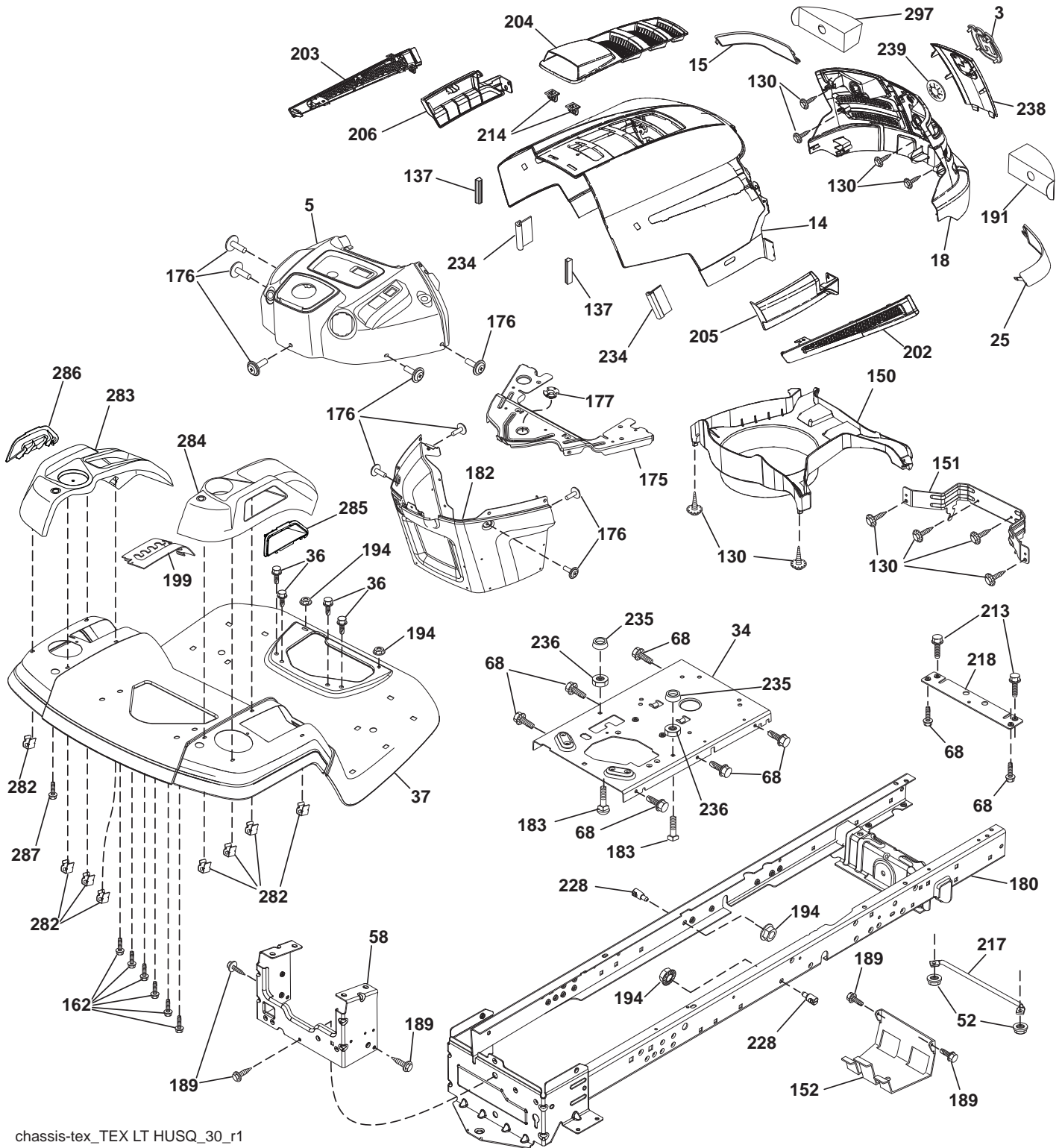


**TRACTOR - - MODEL NO. LTH19530 (96041016900), PRODUCT NO. 960 41 01-69  
ELECTRICAL 32**

| <b>KEY NO.</b> | <b>PART NO.</b> | <b>DESCRIPTION</b>            |
|----------------|-----------------|-------------------------------|
| 1              | 532 14 49-24    | Battery                       |
| 2              | 874 76 04-12    | Bolt Hex Head 1/4-20 x 3/4    |
| 8              | 532 19 32-28    | Box Battery                   |
| 16             | 532 17 61-38    | Switch Interlock Push-In      |
| 21             | 532 40 02-52    | Harness Socket Light w/4152J  |
| 22             | 532 00 41-52    | Bulb Light                    |
| 25             | 532 41 28-94    | Cable Starter                 |
| 26             | 532 17 51-58    | Fuse                          |
| 27             | 873 51 04-00    | Nut Keps Hex 1/4-20 unc       |
| 28             | 532 19 88-85    | Cable, Ground                 |
| 29             | 532 40 15-45    | Switch, Seat                  |
| 30             | 532 19 33-50    | Switch, Ign                   |
| 33             | 532 41 19-33    | Key/Chain                     |
| 34             | 532 11 07-12    | Switch Light/Reset            |
| 40             | 532 40 10-98    | Harness Ign. Dash             |
| 41             | 817 72 04-08    | Screw Thd Cut 1/4-20 x 1/2    |
| 42             | 532 13 15-63    | Cover, Terminal               |
| 43             | 532 19 25-07    | Solenoid                      |
| 46             | 532 40 17-63    | Gauge Hourmeter               |
| 55             | 817 06 05-12    | Screw Thdrol 5/16-18 x 3/4    |
| 71             | 532 40 04-49    | Harness Chassis               |
| 79             | 532 17 52-42    | Socket Asm Bulb Twistlock     |
| 87             | 532 19 78-02    | Switch Interlock Clutch Cable |
| 90             | 532 40 07-25    | Cover, Terminal Battery       |
| 141            | 532 41 69-77    | Kit T2 ROS                    |

**NOTE:** All component dimensions given in U.S. inches  
1 inch = 25.4 mm

TRACTOR - - MODEL NO. LTH19530 (96041016900), PRODUCT NO. 960 41 01-69  
CHASSIS AND ENCLOSURES **39**



chassis-tex\_TEX LT HUSQ\_30\_r1

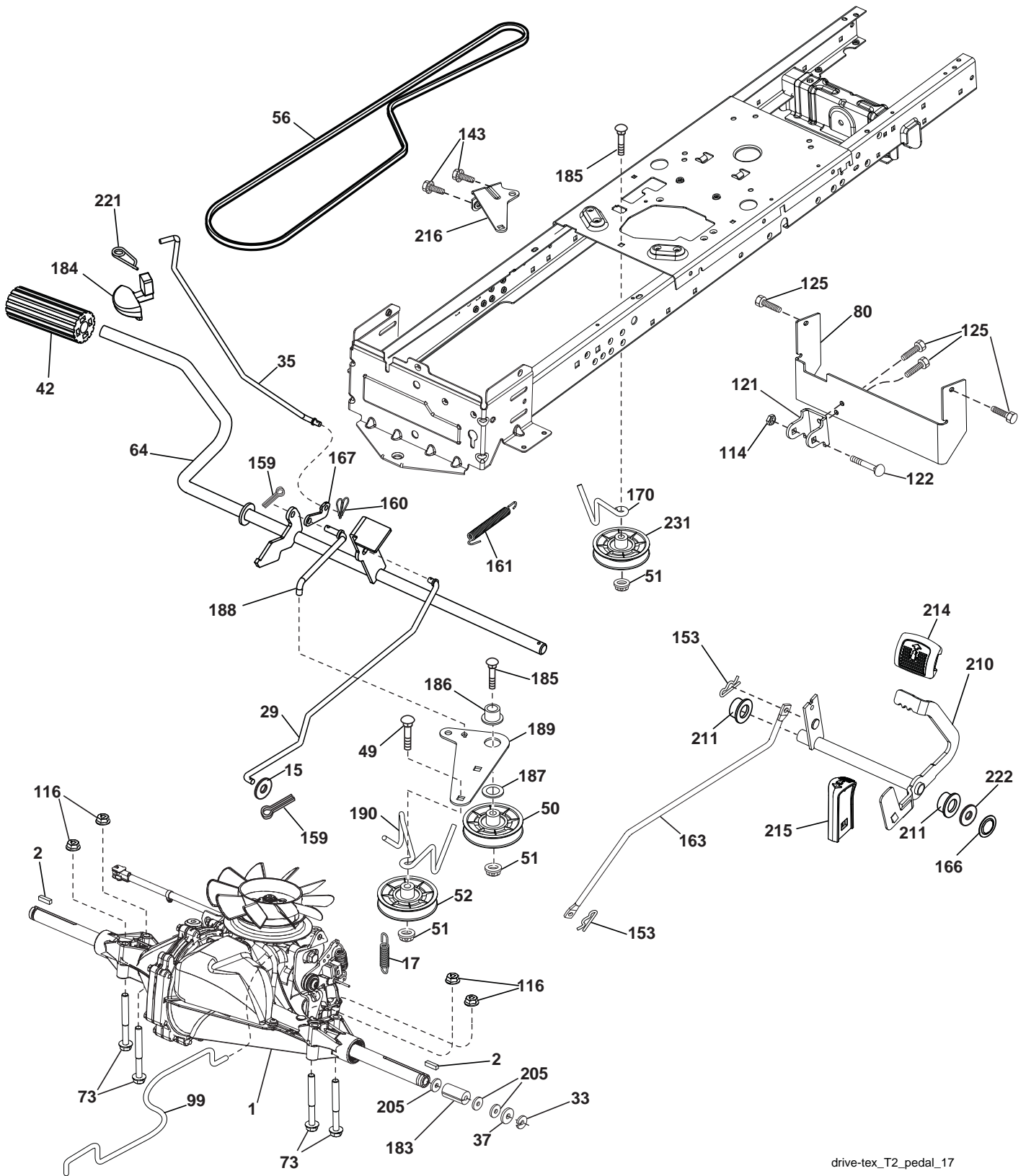
**TRACTOR - - MODEL NO. LTH19530 (96041016900), PRODUCT NO. 960 41 01-69  
CHASSIS AND ENCLOSURES 39**

| KEY<br>NO. | PART<br>NO.  | DESCRIPTION                 | KEY<br>NO. | PART<br>NO.  | DESCRIPTION                     |
|------------|--------------|-----------------------------|------------|--------------|---------------------------------|
| 3          | 532 40 50-12 | Logo                        | 203        | 532 41 10-74 | Vent Side Hood LH               |
| 5          | 532 40 75-92 | Dash                        | 204        | 532 41 11-16 | Vent Top Hood                   |
| 14         | 532 44 12-67 | Hood                        | 205        | 532 41 10-76 | Skirt Side RH                   |
| 15         | 532 41 10-79 | Lens LH                     | 206        | 532 41 10-77 | Skirt Side LH                   |
| 18         | 532 42 69-63 | Grille                      | 213        | 874 76 05-12 | Bolt 5/16-18 x 3/4              |
| 25         | 532 41 10-78 | Lens RH                     | 214        | 532 19 91-45 | Clip Retainer                   |
| 34         | 532 19 61-25 | Plate Engine                | 217        | 532 40 91-67 | Rod Pivot Hood                  |
| 36         | 817 06 05-12 | Screw 5/16-18 x 3/4         | 218        | 532 19 63-95 | X-Piece Hood Stop               |
| 37         | 532 44 12-66 | Fender                      | 228        | 532 19 51-61 | Stud Fastener                   |
| 52         | 873 68 05-00 | Nut Crown Lock 5/16         | 234        | 532 40 47-42 | Bumper Hood                     |
| 58         | 532 41 22-80 | Drawbar, Upper              | 235        | 532 40 61-29 | Spacer Fender                   |
| 68         | 817 49 05-08 | Screw THDROL 5/16-18 x 1/2  | 236        | 873 93 05-00 | Nut Lock 5/16-18 unc            |
| 130        | 532 41 63-58 | Screw #10 x .750 BOS Thread | 238        | 532 41 11-19 | Trim                            |
| 137        | 532 40 75-90 | Bumper Dash                 | 239        | 532 40 48-83 | Clip Tinnerman                  |
| 150        | 532 40 66-62 | Air Duct                    | 282        | 532 41 41-10 | Clip Retainer Console           |
| 151        | 532 40 78-07 | Bracket Pivot               | 283        | 532 41 63-16 | Console Deck Lift               |
| 152        | 532 19 95-35 | Shield Browning             | 284        | 532 41 78-87 | Console Shift                   |
| 162        | 532 14 24-32 | Screw                       | 285        | 532 41 63-15 | Console Insert RH               |
| 175        | 532 19 94-72 | Crossmember                 | 286        | 532 41 63-17 | Console Insert LH               |
| 176        | 532 40 07-76 | Screw 10-24 x 5/8           | 287        | 817 60 04-06 | Screw Hex Washhead 1/4-20 x 3/8 |
| 177        | 532 19 52-28 | Bushing Steering            | 297        | 532 40 66-65 | Insert Reflective LH            |
| 180        | 532 41 46-85 | Chassis                     |            |              |                                 |
| 182        | 532 40 71-76 | Dash Lower                  |            |              |                                 |
| 183        | 874 52 05-20 | Bolt 5/16-18 x 1-1/4        |            |              |                                 |
| 189        | 817 00 05-12 | Screw 5/16-18 x 3/4         |            |              |                                 |
| 191        | 532 41 65-00 | Insert Reflective RH        |            |              |                                 |
| 194        | 873 90 05-00 | Nut Lock Hex Flange 5/16-18 |            |              |                                 |
| 199        | 532 41 34-85 | Plate Deck Lift             |            |              |                                 |
| 202        | 532 41 10-75 | Vent Side Hood RH           |            |              |                                 |

**NOTE:** All component dimensions given in U.S. inches  
1 inch = 25.4 mm



TRACTOR - - MODEL NO. LTH19530 (96041016900), PRODUCT NO. 960 41 01-69  
DRIVE **40**

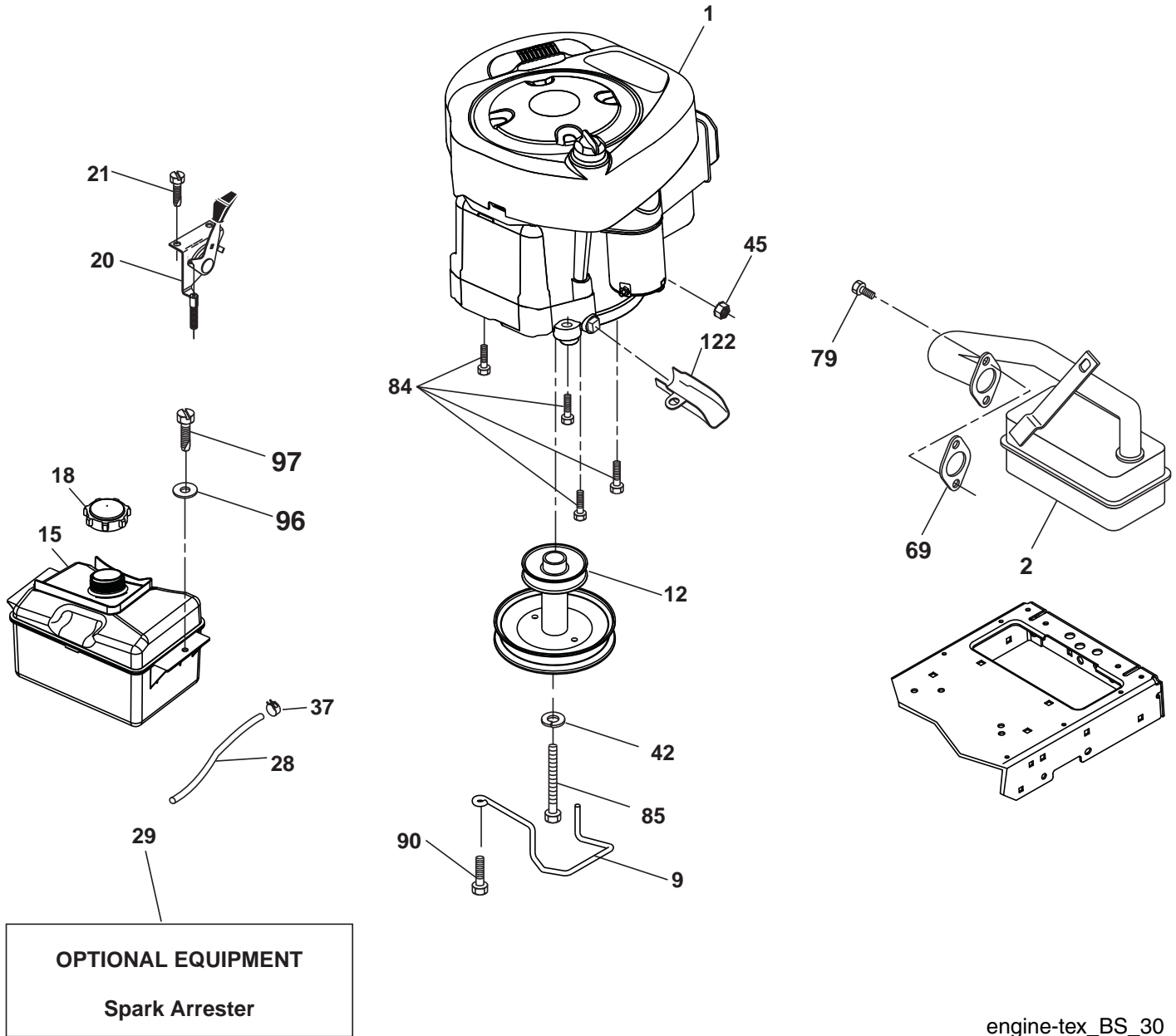


drive-tex\_T2\_pedal\_17

**TRACTOR - - MODEL NO. LTH19530 (96041016900), PRODUCT NO. 960 41 01-69  
DRIVE 40**

| KEY NO. | PART NO.     | DESCRIPTION                        |
|---------|--------------|------------------------------------|
| 1       | ---          | Transaxle, Hydro T2-BABC-1X2B-1GX1 |
| 2       | 532 12 35-83 | Key                                |
| 15      | 819 13 13-16 | Washer 13/32 x 13/16 x 16 Ga.      |
| 17      | 532 19 72-96 | Spring, Brake                      |
| 29      | 532 40 52-57 | Rod, Brake                         |
| 33      | 812 00 00-01 | Ring E                             |
| 35      | 532 40 10-31 | Rod, Brake, Park                   |
| 37      | 532 12 17-49 | Washer 25/32 x 1-1/4 x 16 Ga.      |
| 42      | 532 12 48-72 | Cover, Foot Pedal                  |
| 49      | 872 11 06-14 | Bolt                               |
| 50      | 532 19 43-27 | Pulley Idler Flat                  |
| 51      | 873 90 06-00 | Lock Nut 3/8-16                    |
| 52      | 532 19 43-26 | Idler V-Groove 910" Offset         |
| 56      | 532 12 59-07 | V-Belt, Drive                      |
| 64      | 532 19 78-65 | Shaft Asm. Pedal Brake Control     |
| 73      | 874 49 05-44 | Bolt 5/16-18 Gr. 5                 |
| 80      | 532 40 83-93 | Strap Torque                       |
| 99      | 532 40 84-18 | Rod Asm Bypass Spring              |
| 114     | 873 80 05-00 | Nut Lock 5/16-18 unc               |
| 116     | 873 90 05-00 | Nut Lock Hex Flange 5/16-18        |
| 121     | 532 17 56-11 | Bracket Strap Torque               |
| 122     | 872 01 05-20 | Bolt 5/16-18 x 2.50                |
| 125     | 817 00 05-12 | Screw 5/16-18 x 3/4                |
| 143     | 817 49 05-08 | Screw Thdrol 5/16-18 x 1/2         |
| 153     | 532 12 47-88 | Retainer Spring                    |
| 159     | 876 02 04-12 | Pin Cotter 1/8 x 3/4               |
| 160     | 532 16 94-84 | Retainer Clip                      |
| 161     | 532 10 57-09 | Spring, Return, Clutch             |
| 163     | 532 41 33-22 | Rod Pedal Control                  |
| 166     | 532 42 91-64 | Nut Push .625                      |
| 167     | 532 40 52-57 | Latch Brake Parking                |
| 170     | 532 41 34-30 | Keeper Belt Centerspan             |
| 183     | 532 15 69-72 | Spacer Axle                        |
| 184     | 532 40 97-47 | Handle Parking Brake               |
| 185     | 872 11 06-22 | Bolt                               |
| 186     | 532 19 43-21 | Spacer Retainer                    |
| 187     | 819 13 32-10 | Washer                             |
| 188     | 532 19 43-23 | Link Clutch Ground Drive           |
| 189     | 532 19 43-17 | Bellcrank Ground Drive             |
| 190     | 532 19 43-18 | Keeper Bellcrank Ground Drive      |
| 205     | 532 12 17-48 | Washer 25/32 x 1-5/8 x 16 Ga.      |
| 210     | 532 40 09-80 | Rockr Asm. Pdeal Control           |
| 211     | 532 12 01-83 | Bearing Nylon                      |
| 214     | 532 42 12-63 | Pad Pedal Forward                  |
| 215     | 532 40 17-23 | Pad Pedal Reverse                  |
| 216     | 532 19 61-31 | Bracket Pulley Idler               |
| 221     | 532 40 31-87 | Retainer Spring Clip Handle        |
| 222     | 879 21 20-10 | Washer 21/32 x 1-1/4 10 Ga.        |
| 231     | 532 40 72-87 | Idler V-Groove 1.688               |

**NOTE:** All component dimensions given in U.S. inches  
1 inch = 25.4 mm



engine-tex\_BS\_30

**TRACTOR - - MODEL NO. LTH19530 (96041016900), PRODUCT NO. 960 41 01-69  
ENGINE 24**

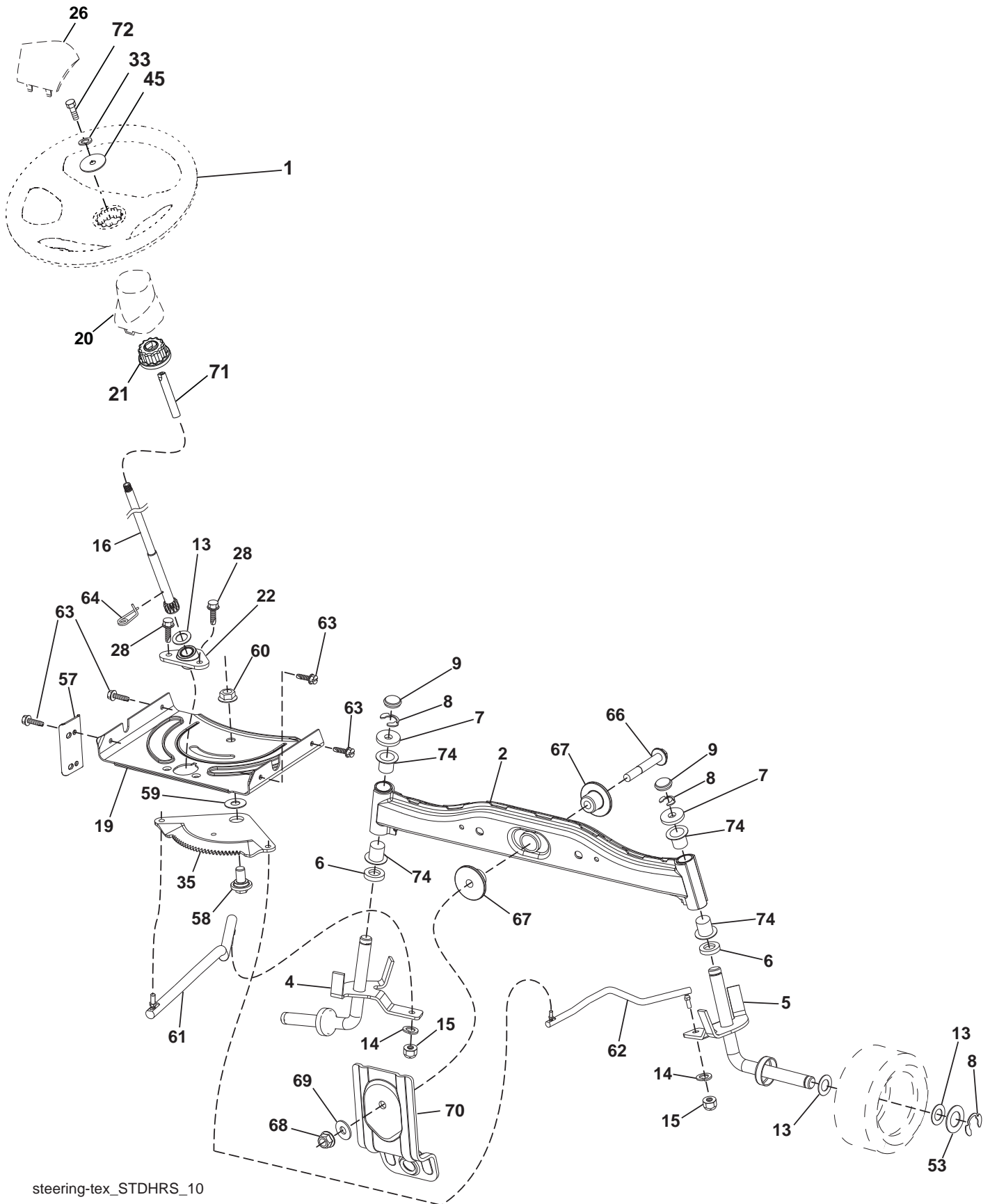
| KEY<br>NO. | PART<br>NO.  | DESCRIPTION                            |
|------------|--------------|--|
| 1          | -----        | Engine Briggs Model No. 31Q677-1399-B1 |
| 2          | 532 13 73-52 | Muffler                                |
| 9          | 532 19 43-19 | Keeper Belt Engine                     |
| 12         | 532 14 01-86 | Pulley Engine                          |
| 15         | 532 40 75-45 | Tank Fuel                              |
| 18         | 532 43 02-20 | Cap Asm                                |
| 20         | 532 18 38-97 | Control Throttle                       |
| 21         | 532 41 63-58 | Screw #10 x 0.750 BOS Thread           |
| 28         | 532 13 70-40 | Fuel Line                              |
| 29         | 532 13 71-80 | Spark Arrester Kit                     |
| 37         | 532 12 34-87 | Clamp Hose                             |
| 42         | 810 04 07-00 | Washer Lock 7/16                       |
| 45         | 873 51 04-00 | Nut Keps Hex 1/4-20 unc                |
| 69         | 532 16 52-91 | Gasket                                 |
| 79         | 532 19 23-34 | Screw 5/16-18 x 3/4                    |
| 84         | 817 06 06-20 | Screw 3/8-16 x 1/4                     |
| 85         | 532 17 39-37 | Bolt Hex 7/16-20 x 4 Gr. 5             |
| 90         | 817 00 06-16 | Screw 3/8-16 x 1                       |
| 96         | 819 09 14-16 | Washer 9/32 x 7/8 x 16 Ga.             |
| 97         | 817 67 04-12 | Screw 1/4-20 x 3/4                     |
| 122        | 532 42 19-22 | Extension Drain Oil                    |

**NOTE:** All component dimensions given in U.S. inches  
1 inch = 25.4 mm

**Engine Power Rating Information**

The gross power rating for individual gas engine models is labeled in accordance with SAE (Society of Automotive Engineers) code J1940 (Small Engine Power & Torque Rating Procedure), and rating performance has been obtained and corrected in accordance with SAE J1995 (Revision 2002-05). Torque values are derived at 3060 RPM; horsepower values are derived at 3600 RPM. Actual gross engine power will be lower and is affected by, among other things, ambient operating conditions and engine-to-engine variability. Given both the wide array of products on which engines are placed and the variety of environmental issues applicable to operating the equipment, the gas engine will not develop the rated gross power when used in a given piece of power equipment (actual "on-site" or net power). This difference is due to a variety of factors including, but not limited to, accessories (air cleaner, exhaust, charging, cooling, carburetor, fuel pump, etc.), application limitations, ambient operating conditions (temperature, humidity, altitude), and engine-to-engine variability. Due to manufacturing and capacity limitations, Briggs & Stratton may substitute an engine of higher rated power for this Series engine.

TRACTOR - - MODEL NO. LTH19530 (96041016900), PRODUCT NO. 960 41 01-69  
STEERING ASSEMBLY **41**



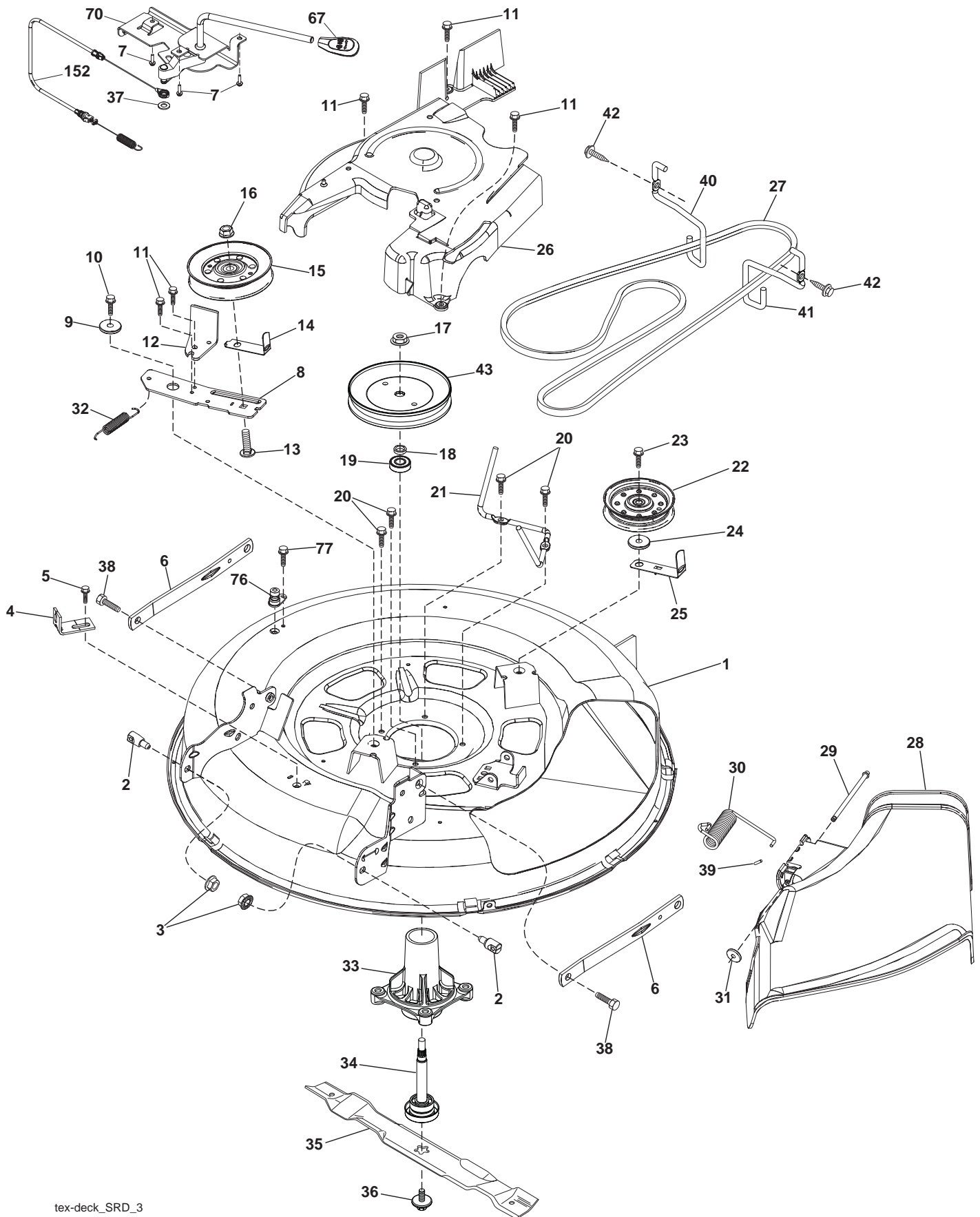
steering-tex\_STDHRS\_10

**TRACTOR - - MODEL NO. LTH19530 (96041016900), PRODUCT NO. 960 41 01-69  
STEERING ASSEMBLY **41****

| <b>KEY NO.</b> | <b>PART NO.</b> | <b>DESCRIPTION</b>                  |
|----------------|-----------------|-------------------------------------|
| 1              | 532 41 64-80    | Wheel, Steering                     |
| 2              | 532 41 81-68    | Axle Asm., Front                    |
| 4              | 532 41 68-45    | Spindle Asm., LH                    |
| 5              | 532 41 68-46    | Spindle Asm., RH                    |
| 6              | 532 12 49-31    | Washer Thrust                       |
| 7              | 532 12 17-48    | Washer 25/32 x 1-5/8 x 16 Ga.       |
| 8              | 812 00 00-29    | Ring, Klip #T5304-75                |
| 9              | 532 12 12-32    | Cap, Spindle                        |
| 13             | 532 12 17-49    | Washer 25/32 x 1-1/4 x 16 Ga.       |
| 14             | 810 04 06-00    | Washer, Lock Hvy Hlcl Spr 3/8       |
| 15             | 873 54 06-00    | Nut, Crown Lock 3/8-24 unf          |
| 16             | 532 42 93-73    | Shaft Steering                      |
| 19             | 532 19 47-29    | Plate Steering                      |
| 20             | 532 41 11-39    | Boot, Steering                      |
| 21             | 532 18 67-37    | Adapter, Wheel Steering             |
| 22             | 532 42 05-37    | Strg. Supt. Lower                   |
| 26             | 532 41 59-87    | Insert, Wheel Steering              |
| 28             | 817 00 06-12    | Screw 3/8-16 x 3/4                  |
| 33             | 810 04 05-00    | Washer Lock 5/16                    |
| 35             | 532 19 47-32    | Gear, Sector Plate                  |
| 45             | 819 11 38-12    | Washer 11/32 x 3/8 x 12 Ga.         |
| 53             | 532 18 89-67    | Washer Hardened .793 x 1.637 x .060 |
| 57             | 532 40 74-65    | Bracket Upstop                      |
| 58             | 532 19 47-47    | Bolt Shoulder Sector Pivot CFM      |
| 59             | 532 19 47-48    | Washer Thrust Sector Steering       |
| 60             | 873 97 10-00    | Nut Flange Lock 5/8-11              |
| 61             | 532 19 47-40    | Draglink, LH                        |
| 62             | 532 19 47-41    | Draglink, RH                        |
| 63             | 817 00 05-12    | Screw 5/16-18 x 3/4                 |
| 64             | 532 19 98-49    | Retainer Clip Spring Steering       |
| 66             | 871 02 07-48    | Bolt Hex Fghd 7/16-14 x 3 Serr      |
| 67             | 532 19 47-37    | Bushing PM Front Axle               |
| 68             | 873 90 07-00    | Nut Lock Flange 7/16-14 Gr. 5       |
| 69             | 532 19 91-62    | Washer 1.5 x .505 x .118            |
| 70             | 532 41 70-65    | Bracket Deck Susp. Front            |
| 71             | 532 19 07-52    | Shaft Extension Steering            |
| 72             | 874 42 89-82    | Bolt 5/16-18 x 4 w/Patch            |
| 74             | 532 12 49-37    | Bearing                             |

**NOTE:** All component dimensions given in U.S. inches  
1 inch = 25.4 mm

TRACTOR - - MODEL NO. LTH19530 (96041016900), PRODUCT NO. 960 41 01-69  
MOWER DECK **44**



tex-deck\_SRD\_3

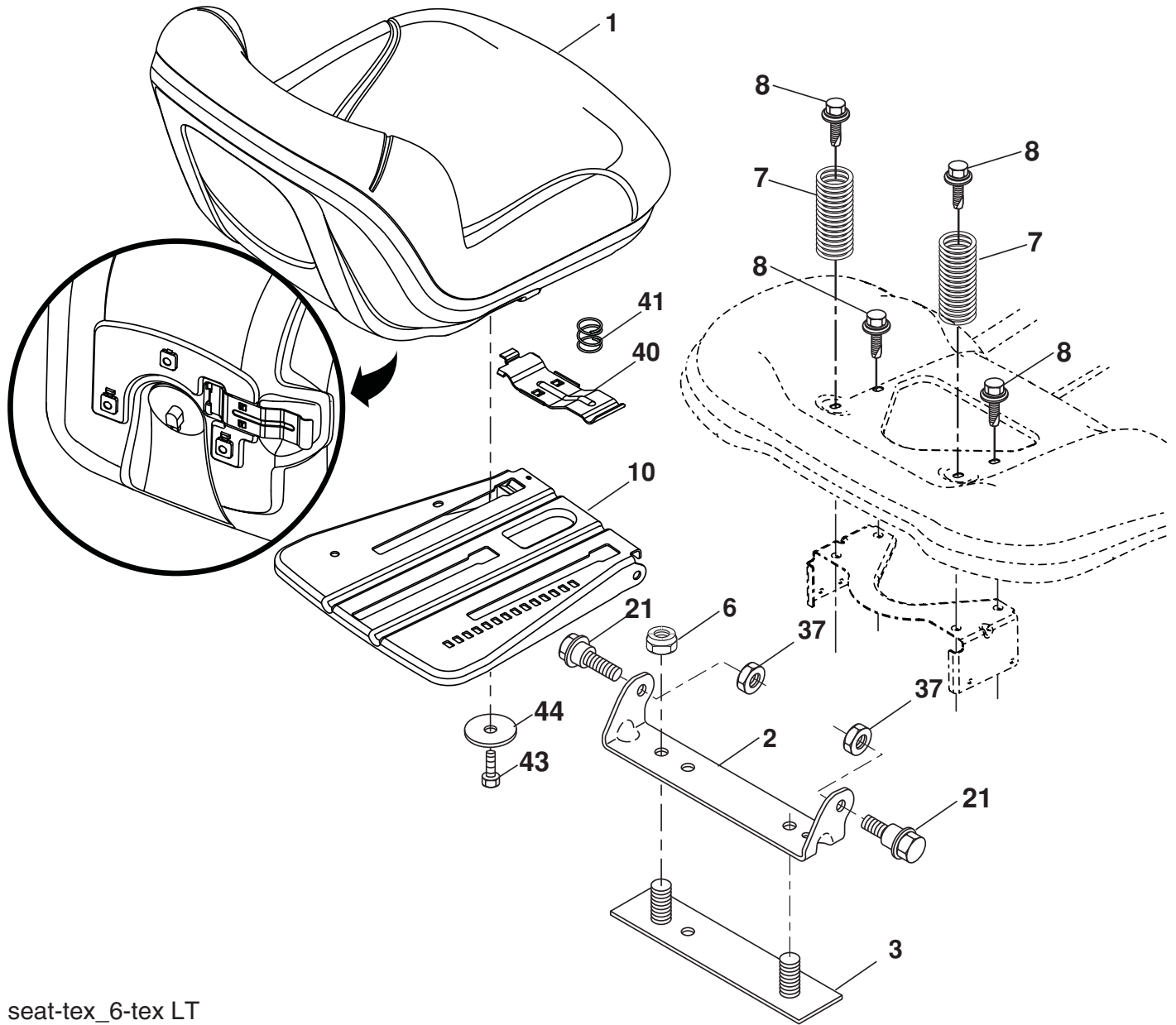
**TRACTOR - - MODEL NO. LTH19530 (96041016900), PRODUCT NO. 960 41 01-69  
MOWER DECK 44**

| KEY<br>NO. | PART<br>NO.  | DESCRIPTION                         | KEY<br>NO. | PART<br>NO.  | DESCRIPTION  |
|------------|--------------|-------------------------------------|------------|--------------|--|
| 1          | 532 43 45-55 | Deck Weldment 30"Srd                | 30         | 532 19 70-26 | Spring Torsion Dfl 38/42/46 Gr   |
| 2          | 532 19 51-61 | Stud Fastner W/D'anti-Rotatio       | 31         | 532 11 04-52 | Nut Push Phos & Oil  |
| 3          | 873 90 05-00 | Nut Lock Hex Flange 5/16 - 18       | 32         | 532 40 18-72 | Spring Return Deck 38/46"  |
| 4          | 532 41 76-45 | Bracket Clutch Cable                | 33         | 532 18 72-81 | Housing Mandrel 4pt Service  |
| 5          | 817 00 05-10 | Bolt 5/16-18                        | 34         | 532 19 28-72 | Shaft Asm Mndrl N/Greaseable38   |
| 6          | 532 41 88-63 | Arm Susp Mower Rear Srd             | 35         | 532 41 92-73 | Blade Mower Hp/Mulch Srd   |
| 7          | 532 41 63-58 | Screw #10 x 0.750 BOS Thread        | 36         | 532 19 30-03 | Bolt/Washer Asm 7/16 - 20 unf  |
| 8          | 532 42 02-52 | Arm Idler 30"Srd                    | 37         | 819 13 13-16 | Washer 13/32 x 13/16 x 16 Ga.  |
| 9          | 532 19 90-92 | Spacer Retainer                     | 38         | 532 19 65-39 | Bolt Shoulder  |
| 10         | 817 00 06-16 | Screw 3/8 - 16 X 1 Smgml Tap/R Blk  | 39         | 532 10 53-04 | Cap Sleeve   |
| 11         | 532 13 77-29 | Screw Thd Roll 1/4 - 20 X 5/8       | 40         | 532 41 92-70 | Keeper Belt Engine LH  |
| 12         | 532 19 94-70 | Arm Brake Mower 38" RH Tex          | 41         | 532 41 92-65 | Keeper Belt Engine RH  |
| 13         | 872 11 06-12 | Bolt Carr Sh 3/8 - 16 X 1 - 1/2 Gr5 | 42         | 817 00 06-12 | Screw Hexwsh THDR 3/8-16x3/4BL   |
| 14         | 532 15 60-85 | Keeper Belt Idler                   | 43         | 532 41 68-77 | Pulley Mandrel 6 5 Pd 30"  |
| 15         | 532 14 67-63 | Pulley Idler V-Groove Dim 4.25      | 67         | 532 40 30-12 | Handle clutch cable  |
| 16         | 873 90 06-00 | Nut Lock FIG 3/8 - 16 unc           | 70         | 532 40 12-46 | Clutch Asm. Manual   |
| 17         | 532 40 02-34 | Nut Flange Lock Top                 | 76         | 532 41 55-98 | Washout Port   |
| 18         | 532 18 76-90 | Washer Spacer Mandrel               | 77         | 532 13 77-29 | Screw  |
| 19         | 532 11 04-85 | Bearing Ball Mandrel                | 152        | 532 40 87-14 | Manual Clutch Cable  |
| 20         | 532 17 39-84 | Screw Thd Roll Dod Pt Hex           | --         | 532 19 28-70 | Mandrel Assembly (Includes Hous-<br>ing, Shaft Assembly, And Bearing<br>Only - Pulley/Nut/Washer And Blade<br>Bolt/Washers Not Included) |
| 21         | 532 41 69-10 | Keeper Belt Mandrel 30"             |            |              |  |
| 22         | 532 17 58-20 | Pulley Idler Flat                   |            |              |  |
| 23         | 817 49 06-28 | Screw Thdrol 3/8 - 16 X 1-3/4       |            |              |  |
| 24         | 819 13 20-12 | Washer 13/32 X 1 - 1/4 X 12 Ga      | --         | 532 43 44-89 | Replacement Mower Complete   |
| 25         | 532 42 02-53 | Keeper Belt 30"Srd                  |            |              |  |
| 26         | 532 42 02-55 | Cover Mandrel Mwr 30"Black          |            |              |  |
| 27         | 532 41 92-71 | V-Belt Gnd Dr                       |            |              |  |
| 28         | 532 41 73-44 | Shield Asm Deflect Mwr 30s Blk      |            |              |  |
| 29         | 532 42 08-95 | Pin Hinge 30                        |            |              |  |

**NOTE:** All component dimensions given in U.S. inches  
1 inch = 25.4 mm



**TRACTOR - - MODEL NO. LTH19530 (96041016900), PRODUCT NO. 960 41 01-69  
SEAT ASSEMBLY 42**



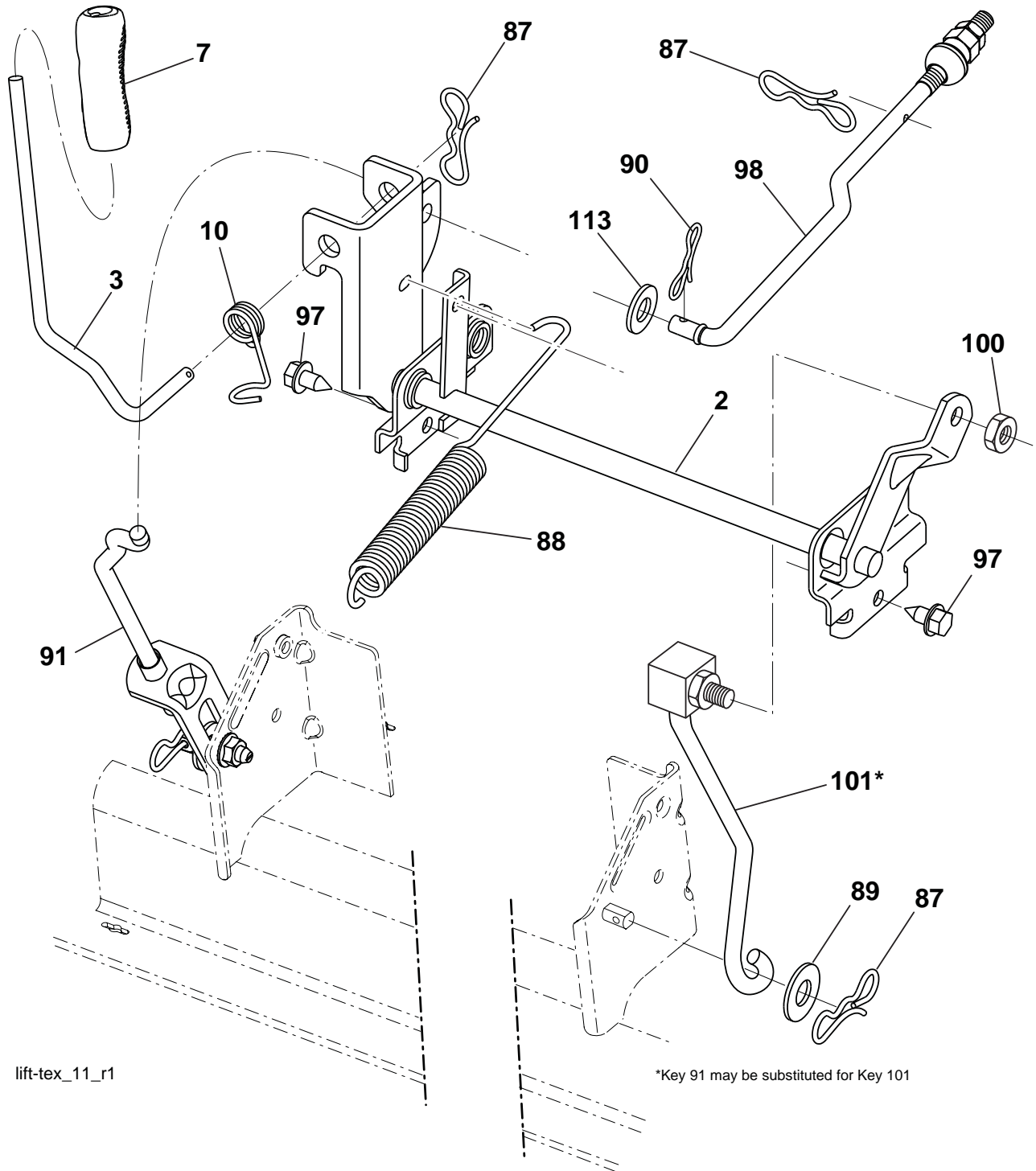
seat-tex\_6-tex LT

| KEY NO. | PART NO.     | DESCRIPTION                   |
|---------|--------------|-------------------------------|
| 1       | 532 42 40-67 | Seat                          |
| 2       | 532 18 01-66 | Bracket Pivot Fender          |
| 3       | 532 14 06-75 | Strap, Asm Fender             |
| 6       | 873 80 06-00 | Nut, Lock w/Ins. 3/8-16 unc   |
| 7       | 532 12 41-81 | Spring, Seat Cprsn            |
| 8       | 532 17 18-77 | Bolt 5/16-18 unc x 3/4 w/Sems |
| 10      | 532 19 69-77 | Pan, Seat                     |
| 21      | 532 17 18-52 | Bolt, Shoulder 5/16-18        |

| KEY NO. | PART NO.     | DESCRIPTION                   |
|---------|--------------|-------------------------------|
| 37      | 873 80 05-00 | Nut, Lock 5/16-18 unc         |
| 40      | 532 19 76-61 | Handle Slide Seat             |
| 41      | 532 19 82-00 | Spring Latch Seat             |
| 43      | 874 76 06-12 | Bolt Fin Hex 3/8-16 unc x 3/4 |
| 44      | 819 13 38-12 | Washer 13/32 x 2-3/8 x 12 Ga. |

**NOTE:** All component dimensions given in U.S. inches  
1 inch = 25.4 mm

**TRACTOR - - MODEL NO. LTH19530 (96041016900), PRODUCT NO. 960 41 01-69**  
**MOWER LIFT 45**



lift-tex\_11\_r1

\*Key 91 may be substituted for Key 101

| KEY NO. | PART NO.     | DESCRIPTION                  |
|---------|--------------|------------------------------|
| 2       | 532 42 20-27 | Shaft Asm., Lift             |
| 3       | 532 19 52-31 | Lever Asm., Lift RH          |
| 7       | 532 41 15-55 | Grip, Lever                  |
| 10      | 532 19 63-14 | Spring Torsion               |
| 87      | 532 19 42-09 | Pin Cotter 7/16 Bow Tie Lock |
| 88      | 532 41 07-10 | Spring Lift Assist           |
| 89      | 819 19 19-12 | Washer Clear Zinc            |
| 90      | 532 19 42-08 | Pin Cotter 5/16 Bow Tie Lock |
| 91      | 532 19 51-81 | Link Asm Lift LH Rear        |

| KEY NO. | PART NO.     | DESCRIPTION                      |
|---------|--------------|----------------------------------|
| 97      | 817 00 06-12 | Screw Hex Wsh. THDR 3/8-16 x 3/4 |
| 98      | 532 19 52-64 | Link Lift Susp. Front Mower      |
| 100     | 873 93 06-00 | Nut Centerlock 3/8-16 unc        |
| 101     | 532 40 70-03 | Link Asm Lift FXD                |
| 113     | 819 17 19-12 | Washer 17/32 X 1-3/16 x 126F     |

**NOTE:** All component dimensions given in U.S. inches  
 1 inch = 25.4 mm

