

LTH2142 D

Spare parts

Ersatzteile

Pièces détachées

Reserve onderdelen

Repuestos

Reservdelar

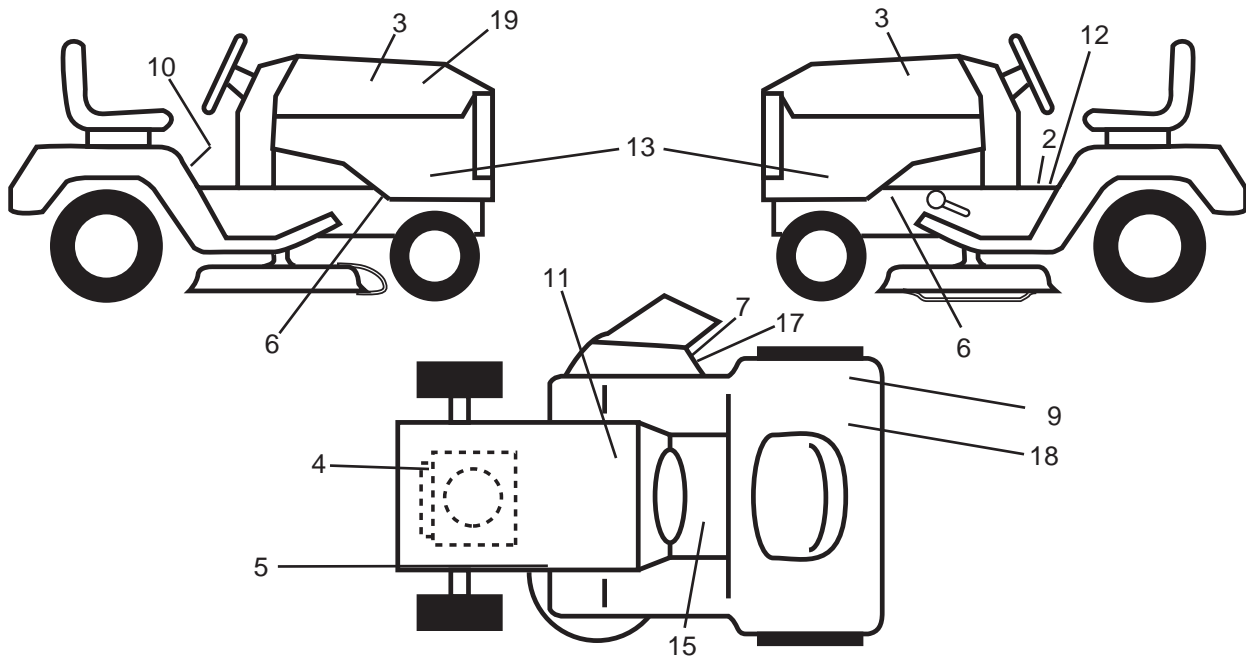
ILLUSTRATED PARTS LIST

MODEL NO. 96041017200

CUSTOMER CATALOG NO. LTH2142D

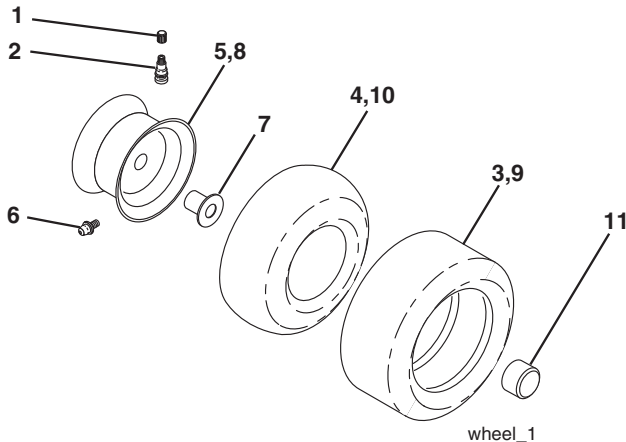
PRODUCT NO. 960 41 01-72

**TRACTOR - - MODEL NO. LTH2142D (96041017200), PRODUCT NO. 960 41 01-72
DECALS 27**



| KEY NO. | PART NO. | DESCRIPTION | KEY NO. | PART NO. | DESCRIPTION |
|---------|--------------|-------------------------------|---------|--------------|------------------------------|
| 2 | 532 14 08-37 | Decal, Brake Parking Sandle | 13 | 532 43 39-89 | Decal, Sidepnl |
| 3 | 532 42 91-96 | Decal, Hood | 15 | 532 15 97-37 | Decal, Brake/Clutch Symbol |
| 4 | 532 19 68-41 | Decal, Warning Engine Syms | 17 | 532 19 63-57 | Decal, Cutfinger Warning |
| 5 | 532 16 03-96 | Decal, V-Belt Sch. | 18 | 532 12 44-33 | Decal, 80 DBA |
| 6 | 532 15 97-36 | Decal, Chassis Hot Muffler | 19 | 532 43 37-74 | Decal, Replacement |
| 7 | 532 18 21-66 | Decal, Mower Cutfinger Symbol | -- | 532 16 25-98 | Decal, Drawbar Load Limit |
| 9 | 532 16 88-69 | Decal, Tick Mark | -- | 532 16 69-60 | Decal, Bypass Lt Hydro |
| 10 | 532 40 03-89 | Decal, Warning Symbols CE | -- | 532 41 08-05 | Pad, Footrest LH |
| 11 | 532 14 50-05 | Decal, Bat Dan/Poi P/L Sym | -- | 532 41 08-06 | Pad, Footrest RH |
| 12 | 532 17 83-02 | Decal, Oper. Cruise Symbols | -- | 532 43 39-31 | Manual, Operator's (English) |

WHEELS & TIRES



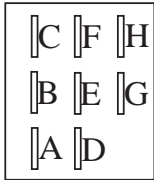
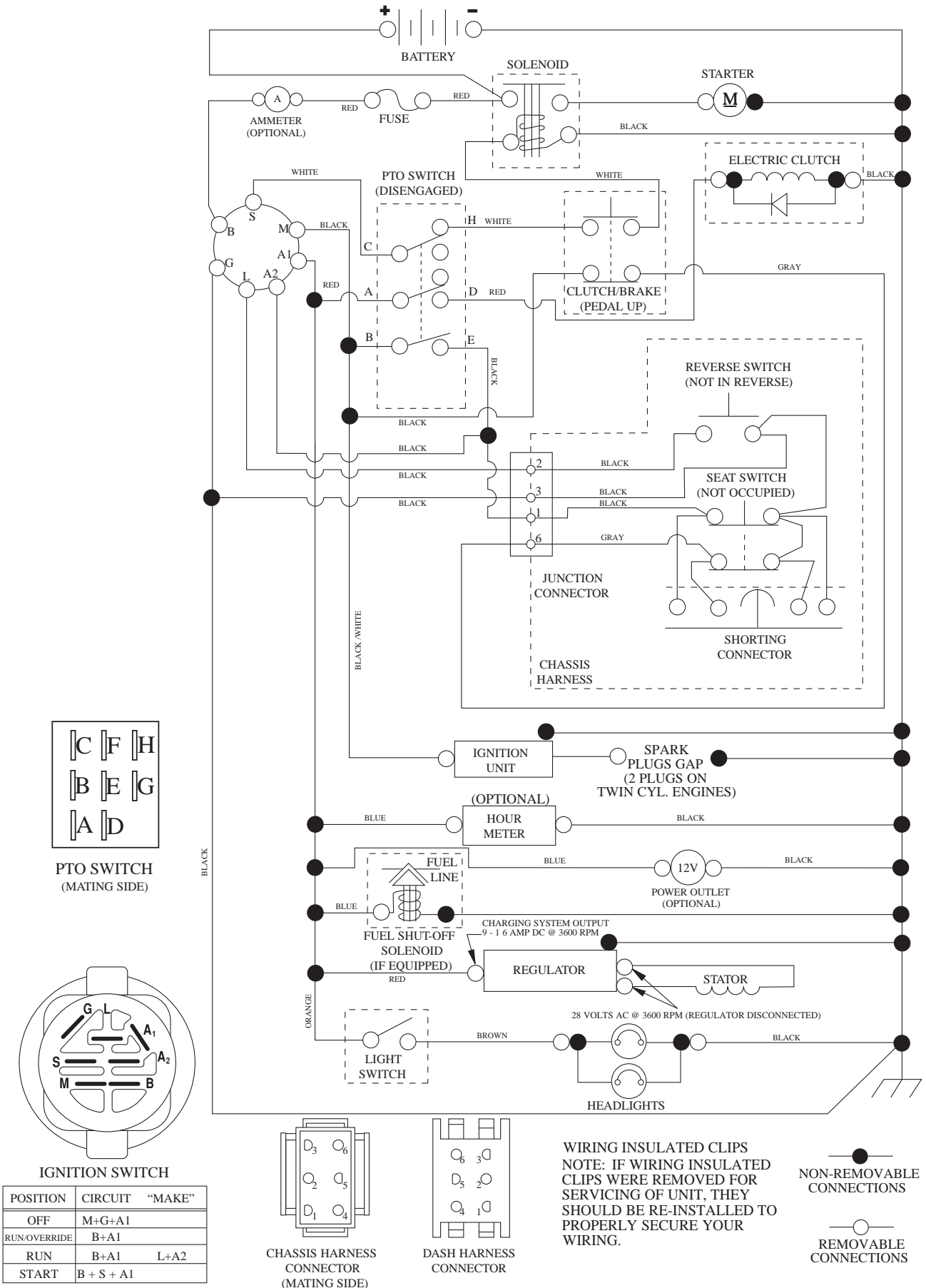
| KEY NO. | PART NO. | DESCRIPTION |
|---------|--------------|-----------------------------------|
| 1 | 532 05 91-92 | Cap Valve Tire |
| 2 | 532 06 51-39 | Stem Valve |
| 3 | 532 10 62-22 | Tire F Ts 15 x 6 0 - 6 Service |
| 4 | 532 05 99-04 | Tube Front (Service Item Only) |
| 5 | 532 13 83-36 | Rim Asm 6" Front Silver Service |
| 6 | 532 12 49-57 | Fitting Grease (Front Wheel Only) |
| 7 | 532 12 49-59 | Bearing Flange (Front Wheel Only) |
| 8 | 532 13 83-37 | Rim Asm 8" Rear Silver Service |
| 9 | 532 12 20-82 | Tire R Ts 20 x 10-8 C Service |
| 10 | 532 12 49-26 | Tube Rear (Service Item Only) |
| 11 | 532 17 50-39 | Cap Axle Blk 1 50 x 1 00 |
| -- | 532 14 43-34 | Sealant, Tire (10 oz. tube) |

NOTE: All component dimensions given in U.S. inches
1 inch = 25.4 mm

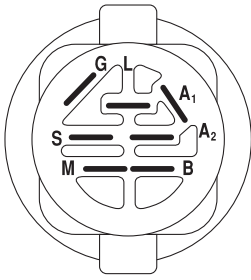
TRACTOR - - MODEL NO. LTH2142D (96041017200), PRODUCT NO. 960 41 01-72

SCHEMATIC 38

SCH12

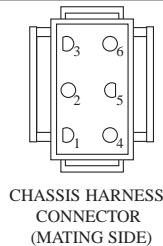


PTO SWITCH
(MATING SIDE)

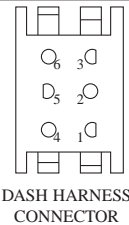


IGNITION SWITCH

| POSITION | CIRCUIT | "MAKE" |
|--------------|------------|--------|
| OFF | M+G+A1 | |
| RUN/OVERRIDE | B+A1 | |
| RUN | B+A1 | L+A2 |
| START | B + S + A1 | |



CHASSIS HARNESS CONNECTOR
(MATING SIDE)



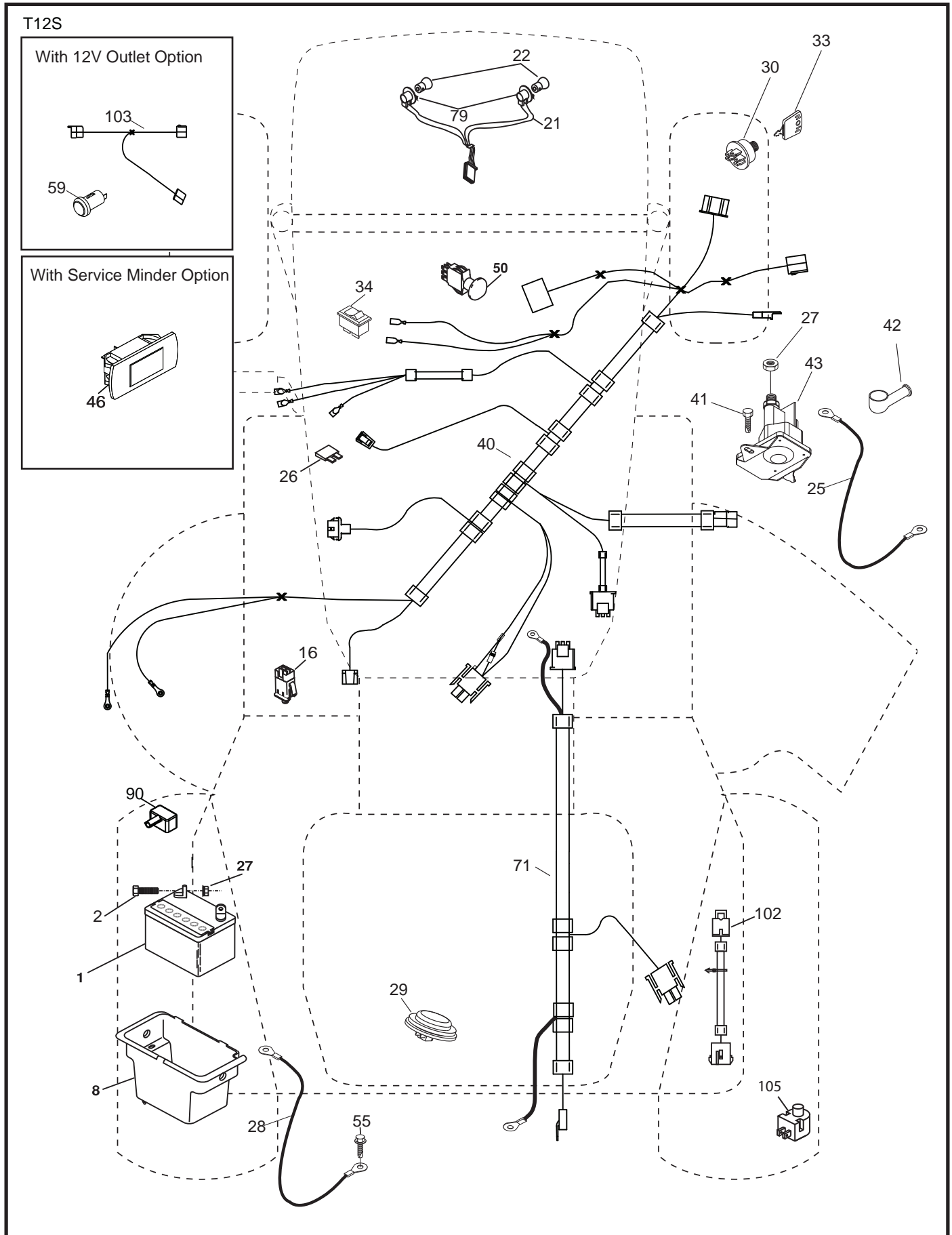
DASH HARNESS CONNECTOR

WIRING INSULATED CLIPS
NOTE: IF WIRING INSULATED CLIPS WERE REMOVED FOR SERVICING OF UNIT, THEY SHOULD BE RE-INSTALLED TO PROPERLY SECURE YOUR WIRING.

NON-REMOVABLE CONNECTIONS

REMOVABLE CONNECTIONS

**TRACTOR -- MODEL NO. LTH2142D (96041017200), PRODUCT NO. 960 41 01-72
ELECTRICAL 32**

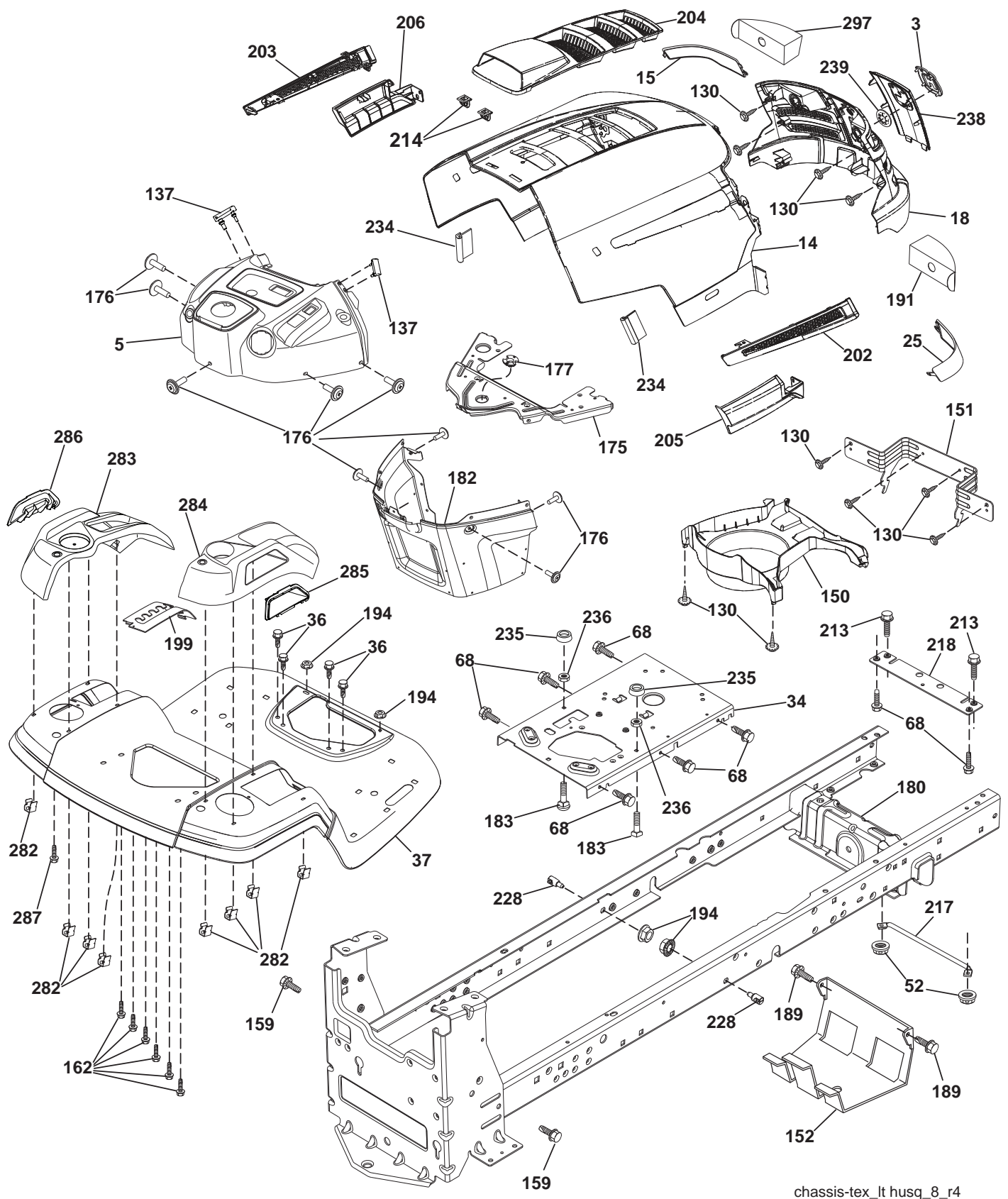


**TRACTOR - - MODEL NO. LTH2142D (96041017200), PRODUCT NO. 960 41 01-72
ELECTRICAL 32**

| KEY NO. | PART NO. | DESCRIPTION |
|----------------|-----------------|-------------------------------------|
| 1 | 532 16 34-65 | Battery |
| 2 | 874 76 04-12 | Bolt Hex Hd 1/4-20 unc x 3/4 |
| 8 | 532 19 32-28 | Box Battery |
| 16 | 532 17 61-38 | Switch Interlock |
| 21 | 532 40 02-52 | Harness Asm Light w/4152J |
| 22 | 532 00 41-52 | Bulb Light #1156 |
| 25 | 532 41 28-94 | Cable Battery 6 Ga. Red 14.5 |
| 26 | 532 17 51-58 | Fuse 20 AMP |
| 27 | 873 51 04-00 | Nut Keps Hex 1/4-20 Unc |
| 28 | 532 19 88-85 | Cable 18" Rear. BATT. |
| 29 | 532 40 15-45 | Switch Seat |
| 30 | 532 19 33-50 | Switch Ignition |
| 33 | 532 41 19-33 | Key/Chain |
| 34 | 532 11 07-12 | Switch Light |
| 40 | 532 40 11-04 | Harness Ign. |
| 41 | 817 72 04-08 | Bolt Hex Hd. Fin 1/4-20 x 1/2 Gr. 5 |
| 42 | 532 13 15-63 | Cover Terminal Red |
| 43 | 532 19 25-07 | Solenoid |
| 46 | 532 40 17-63 | Hourmeter |
| 50 | 532 17 46-51 | Switch PTO |
| 55 | 817 06 05-12 | Screw 5/16-18 x 3/4 |
| 71 | 532 40 04-49 | Harness Ign. Chass. Tex |
| 79 | 532 17 52-42 | Socket, Asm. Bulb |
| 90 | 532 40 07-25 | Cover Terminal Battery |
| 102 | 532 40 44-54 | Harness Pigtail K46 TEX ROS |
| 105 | 532 40 75-68 | Switch Reverse TT Pedal Control |

NOTE: All component dimensions given in U.S. inches
1 inch = 25.4 mm.

TRACTOR - - MODEL NO. LTH2142D (96041017200), PRODUCT NO. 960 41 01-72
CHASSIS AND ENCLOSURES 39



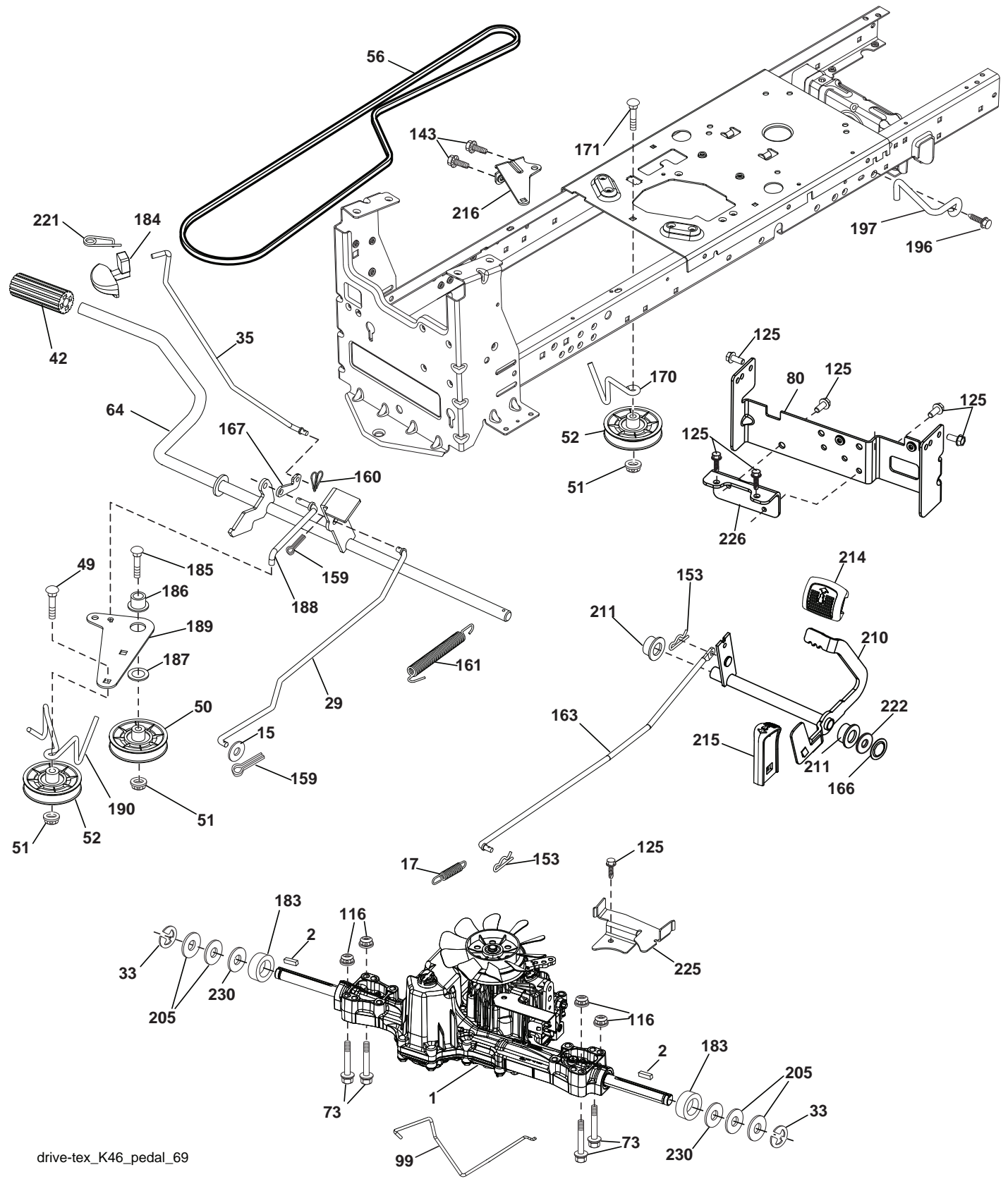
chassis-tex_lt husq_8_r4

**TRACTOR - - MODEL NO. LTH2142D (96041017200), PRODUCT NO. 960 41 01-72
CHASSIS AND ENCLOSURES **39****

| KEY NO. | PART NO. | DESCRIPTION | KEY NO. | PART NO. | DESCRIPTION |
|---------|--------------|---------------------------------|---------|--------------|---------------------------------|
| 3 | 532 40 50-12 | Logo | 199 | 532 41 34-85 | Plate Deck Lift |
| 5 | 532 40 75-94 | Dash | 202 | 532 41 10-75 | Vent Side Hood RH |
| 14 | 532 44 12-67 | Hood | 203 | 532 41 10-74 | Vent Side Hood LH |
| 15 | 532 41 10-79 | Lens LH | 204 | 532 41 11-16 | Vent Top Hood |
| 18 | 532 42 69-63 | Grille | 205 | 532 41 10-76 | Skirt Side RH |
| 25 | 532 41 10-78 | Lens RH | 206 | 532 41 10-77 | Skirt Side LH |
| 34 | 532 19 61-25 | Plate Engine | 213 | 874 76 05-12 | Bolt 5/16-18 x 3/4 |
| 36 | 817 06 05-12 | Screw 5/16-18 x 3/4 | 214 | 532 19 91-45 | Clip Retainer |
| 37 | 532 44 12-66 | Fender | 217 | 532 40 91-67 | Rod Pivot Hood |
| 52 | 873 68 05-00 | Nut Crown Lock 5/16 | 218 | 532 19 63-95 | X-Piece Hood Stop |
| 68 | 817 49 05-08 | Screw THDROL 5/16-18 x 1/2 | 228 | 532 19 51-61 | Stud Fastener |
| 130 | 532 41 63-58 | Screw #10 x 0.750 BOS Thread | 234 | 532 40 47-42 | Bumper Hood |
| 137 | 532 40 75-90 | Bumper, Dash | 235 | 532 40 61-29 | Spacer Fender |
| 150 | 532 40 75-37 | Air Duct | 236 | 873 93-05-00 | Nut Lock 5/16-18 unc Center |
| 151 | 532 40 78-07 | Bracket Pivot | 238 | 532 41 11-19 | Trim |
| 152 | 532 19 95-35 | Shield Browning | 239 | 532 40 48-83 | Clip Tinnerman |
| 159 | 817 00 06-12 | Screw Hex Wsh Thdr 3/8-16 x 3/4 | 282 | 532 41 41-10 | Clip Retainer |
| 162 | 532 14 24-32 | Screw | 283 | 532 41 63-16 | Console Deck Lift |
| 175 | 532 19 94-72 | Crossmember | 284 | 532 41 78-87 | Console Control Pedal |
| 176 | 532 40 07-76 | Screw 10-24 x 5/8 | 285 | 532 41 63-15 | Console Insert RH |
| 177 | 532 19 52-28 | Bushing Steering | 286 | 532 41 63-17 | Console Insert LH |
| 180 | 532 19 54-57 | Chassis | 287 | 817 60 04-06 | Screw Hex Washhead 1/4-20 x 3/8 |
| 182 | 532 40 71-76 | Dash Lower | 297 | 532 40 66-65 | Insert Reflective LH |
| 183 | 874 52 05-20 | Bolt 5/16-18 unc x 1-1/4 | | | |
| 189 | 817 00 05-12 | Screw 5/16-18 x 3/4 | | | |
| 191 | 532 41 65-00 | Insert Reflective RH | | | |
| 194 | 873 90 05-00 | Nut Lock Hex Flange 5/16-18 | | | |

NOTE: All component dimensions given in U.S. inches
1 inch = 25.4 mm

TRACTOR -- MODEL NO. LTH2142D (96041017200), PRODUCT NO. 960 41 01-72
DRIVE **40**



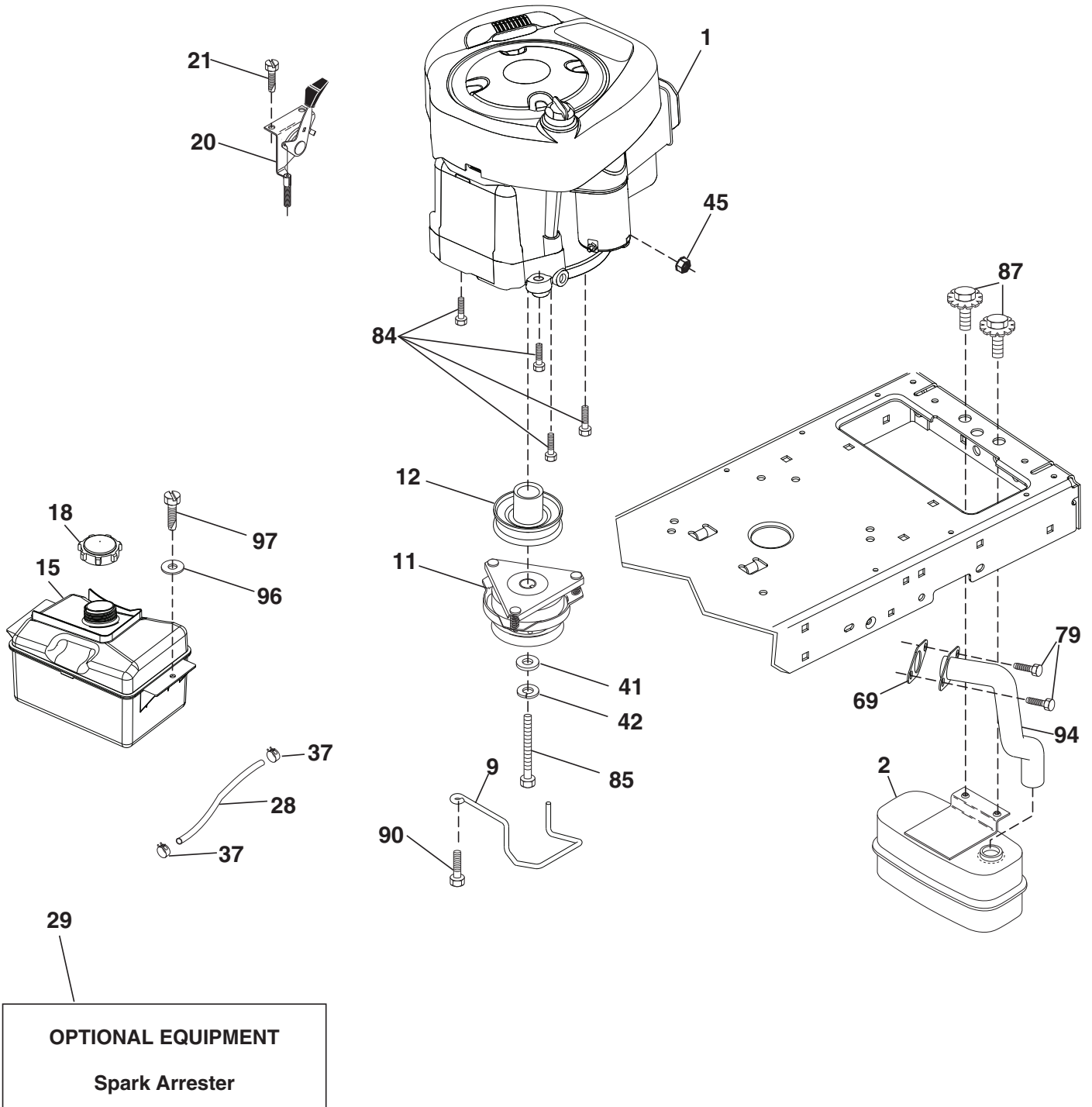
drive-tex_K46_pedal_69

**TRACTOR - - MODEL NO. LTH2142D (96041017200), PRODUCT NO. 960 41 01-72
DRIVE 40**

| KEY NO. | PART NO. | DESCRIPTION |
|----------------|-----------------|---|
| 1 | - - - - - | Transaxle, TUFFTORQ K46 CR (Order parts from transaxle manufacturer) |
| 2 | 532 12 35-83 | Key |
| 15 | 819 13 13-16 | Washer 13/32 x 13/16 x 16 Ga. |
| 17 | 532 41 36-78 | Spring, Brake |
| 29 | 532 40 38-06 | Rod, Brake |
| 33 | 812 00 00-01 | Ring E |
| 35 | 532 40 10-31 | Rod, Brake, Park |
| 42 | 532 12 48-72 | Cover, Foot Pedal |
| 49 | 872 11 06-14 | Bolt |
| 50 | 532 19 43-27 | Pulley Idler Flat |
| 51 | 873 90 06-00 | Lock Nut 3/8-16 |
| 52 | 532 19 43-26 | Idler V-Groove 910" Offset |
| 56 | 532 13 09-69 | V-Belt, Drive |
| 64 | 532 19 78-65 | Shaft Asm. Pedal Brake Control |
| 73 | 874 49 05-44 | Bolt Hex Flghd 5/16-18 Gr. 5 |
| 80 | 532 41 00-24 | Bracket Strap Torque |
| 99 | 532 41 57-42 | Rod Spring Bypass |
| 116 | 873 90 05-00 | Nut Lock Hex Flange 5/16-18 |
| 125 | 817 00 05-12 | Screw 5/16-18 x 3/4 |
| 143 | 817 49 05-08 | Screw 5/16-18 x 1/2 |
| 153 | 532 12 47-88 | Retainer Spring |
| 159 | 876 02 04-12 | Pin Cotter 1/8 x 3/4 |
| 160 | 532 16 94-84 | Retainer Clip |
| 161 | 532 10 57-09 | Spring, Return, Clutch |
| 163 | 532 40 10-34 | Rod Pedal Control |
| 166 | 532 42 91-64 | Nut Push |
| 167 | 532 40 52-57 | Latch Brake Parking |
| 170 | 532 19 43-22 | Keeper Belt Centerspan |
| 171 | 872 11 06-16 | Bolt RDHD SQNK 3/8-16 unc x 2 |
| 183 | 532 13 70-57 | Spacer Split |
| 184 | 532 40 97-47 | Handle Parking Brake |
| 185 | 872 11 06-22 | Bolt RDHD 3/8-16 unc x 2-3/4 Gr. 5 |
| 186 | 532 19 43-21 | Spacer Retainer |
| 187 | 819 13 32-10 | Washer |
| 188 | 532 19 43-23 | Link Clutch Ground Drive |
| 189 | 532 19 43-17 | Bellcrank Ground Drive |
| 190 | 532 19 43-18 | Keeper Bellcrank Ground Drive |
| 196 | 817 00 06-16 | Screw 3/8-16 x 1 |
| 197 | 532 19 58-04 | Bracket Clutch Anti-Rotation |
| 205 | 532 12 17-48 | Washer |
| 210 | 532 40 09-80 | Rocker Asm. Pedal Control |
| 211 | 532 12 01-83 | Bearing Nylon |
| 214 | 532 42 12-63 | Pedal Forward |
| 215 | 532 40 17-23 | Pedal Reverse |
| 216 | 532 19 61-31 | Bracket Pulley Idler |
| 221 | 532 40 31-87 | Retainer Spring Clip Handle |
| 222 | 879 21 20-10 | Washer 21/32 x 1-1/4 x 10 Ga. |
| 225 | 532 40 33-19 | Keeper Belt Trans. |
| 226 | 532 40 15-64 | Bracket Mount Torque |
| 230 | 532 18 89-67 | Washer Hardened |

NOTE: All component dimensions given in U.S. inches
1 inch = 25.4 mm

TRACTOR - - MODEL NO. LTH2142D (96041017200), PRODUCT NO. 960 41 01-72
ENGINE **24**



engine-tex_BS_44

**TRACTOR - - MODEL NO. LTH2142D (96041017200), PRODUCT NO. 960 41 01-72
ENGINE 24**

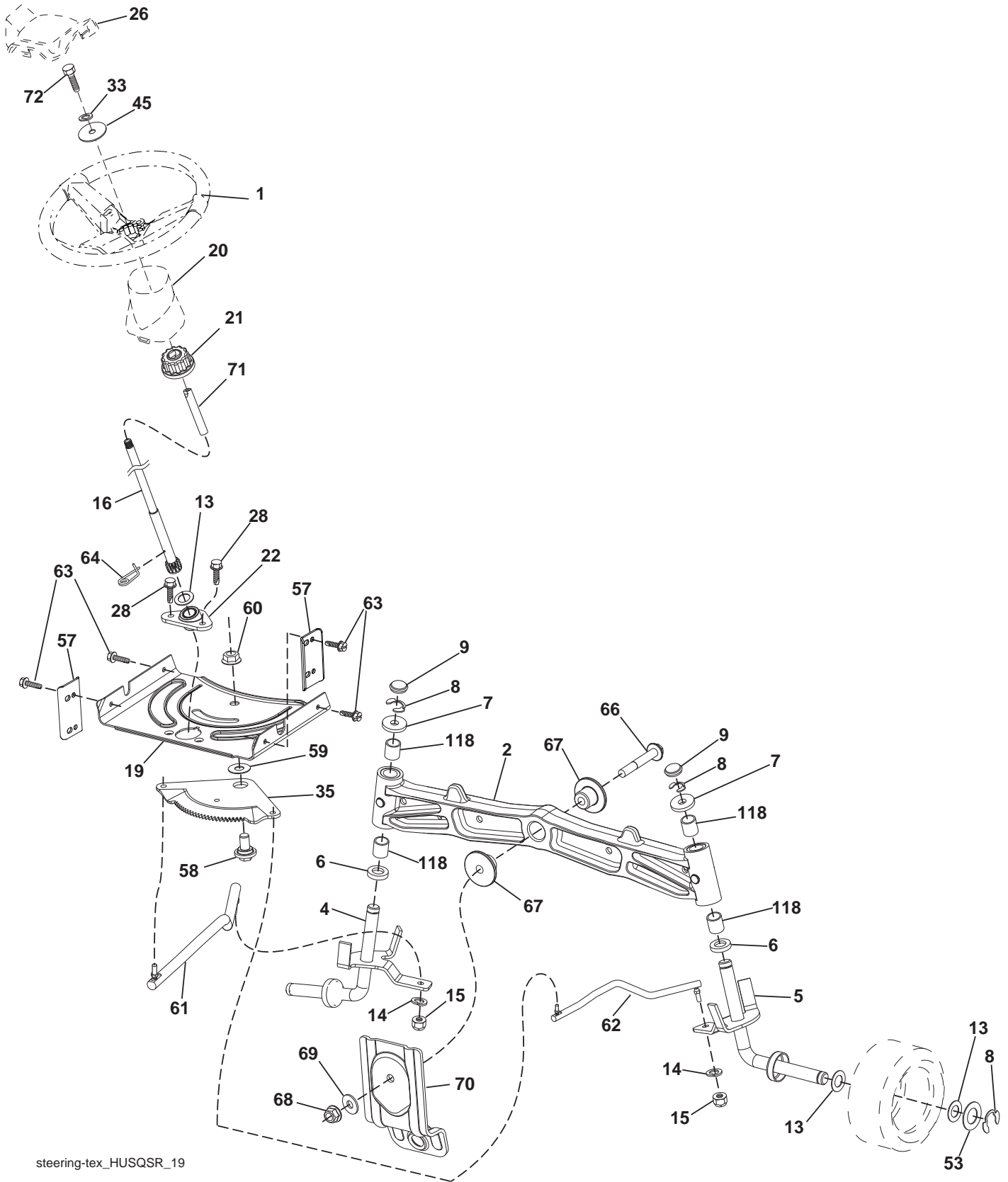
| KEY NO. | PART NO. | DESCRIPTION |
|---------|--------------|--|
| 1 | --- | Engine Briggs 33M777-1400-B1 (Order parts from engine manufacturer) |
| 2 | 532 18 86-55 | Muffler |
| 9 | 532 19 43-20 | Keeper Belt Engine |
| 11 | 532 18 05-05 | Clutch, Ogura |
| 12 | 532 40 50-97 | Pulley Engine |
| 15 | 532 40 75-45 | Tank Fuel 1.5 |
| 18 | 532 43 02-20 | Cap Fuel |
| 20 | 532 18 38-97 | Control Throttle |
| 21 | 532 41 63-58 | Screw #10 x 0.750 BOS Thread |
| 28 | 532 13 70-40 | Fuel Line |
| 29 | 532 13 71-80 | Spark Arrester Kit |
| 37 | 532 12 34-87 | Clamp Hose |
| 41 | 532 12 61-97 | Washer 1-1/2 OD. x 15/32 ID x 250 |
| 42 | 810 04 07-00 | Wahser Lock Hvy HLCL Spr. 7/16 |
| 45 | 873 51 04-00 | Nut Keps Hex 1/4-20 unc |
| 69 | 532 16 52-91 | Gasket |
| 79 | 532 19 23-34 | Screw Socket HD. 5/16-18 x .75 |
| 84 | 817 06 06-20 | Screw 3/8-16 x 1 1/4 |
| 85 | 532 17 39-37 | Bolt Hex 7/16-20 x 4 x Gr. 5-1.5 Thr |
| 87 | 532 17 18-77 | Bolt 5/16-18 X 3/4 |
| 90 | 817 00 06-16 | Screw 3/8-16 x 1 |
| 94 | 532 40 54-50 | Tube Exhaust |
| 96 | 819 09 14-16 | Washer 9/32 x 7/8 x 16 Ga. |
| 97 | 817 67 04-12 | Screw 1/4-20 x 3/4 |

NOTE: All component dimensions given in U.S. inches
1 inch = 25.4 mm

Engine Power Rating Information

The gross power rating for individual gas engine models is labeled in accordance with SAE (Society of Automotive Engineers) code J1940 (Small Engine Power & Torque Rating Procedure), and rating performance has been obtained and corrected in accordance with SAE J1995 (Revision 2002-05). Torque values are derived at 3060 RPM; horsepower values are derived at 3600 RPM. Actual gross engine power will be lower and is affected by, among other things, ambient operating conditions and engine-to-engine variability. Given both the wide array of products on which engines are placed and the variety of environmental issues applicable to operating the equipment, the gas engine will not develop the rated gross power when used in a given piece of power equipment (actual "on-site" or net power). This difference is due to a variety of factors including, but not limited to, accessories (air cleaner, exhaust, charging, cooling, carburetor, fuel pump, etc.), application limitations, ambient operating conditions (temperature, humidity, altitude), and engine-to-engine variability. Due to manufacturing and capacity limitations, Briggs & Stratton may substitute an engine of higher rated power for this Series engine.

TRACTOR -- MODEL NO. LTH2142D (96041017200), PRODUCT NO. 960 41 01-72
STEERING ASSEMBLY [41]



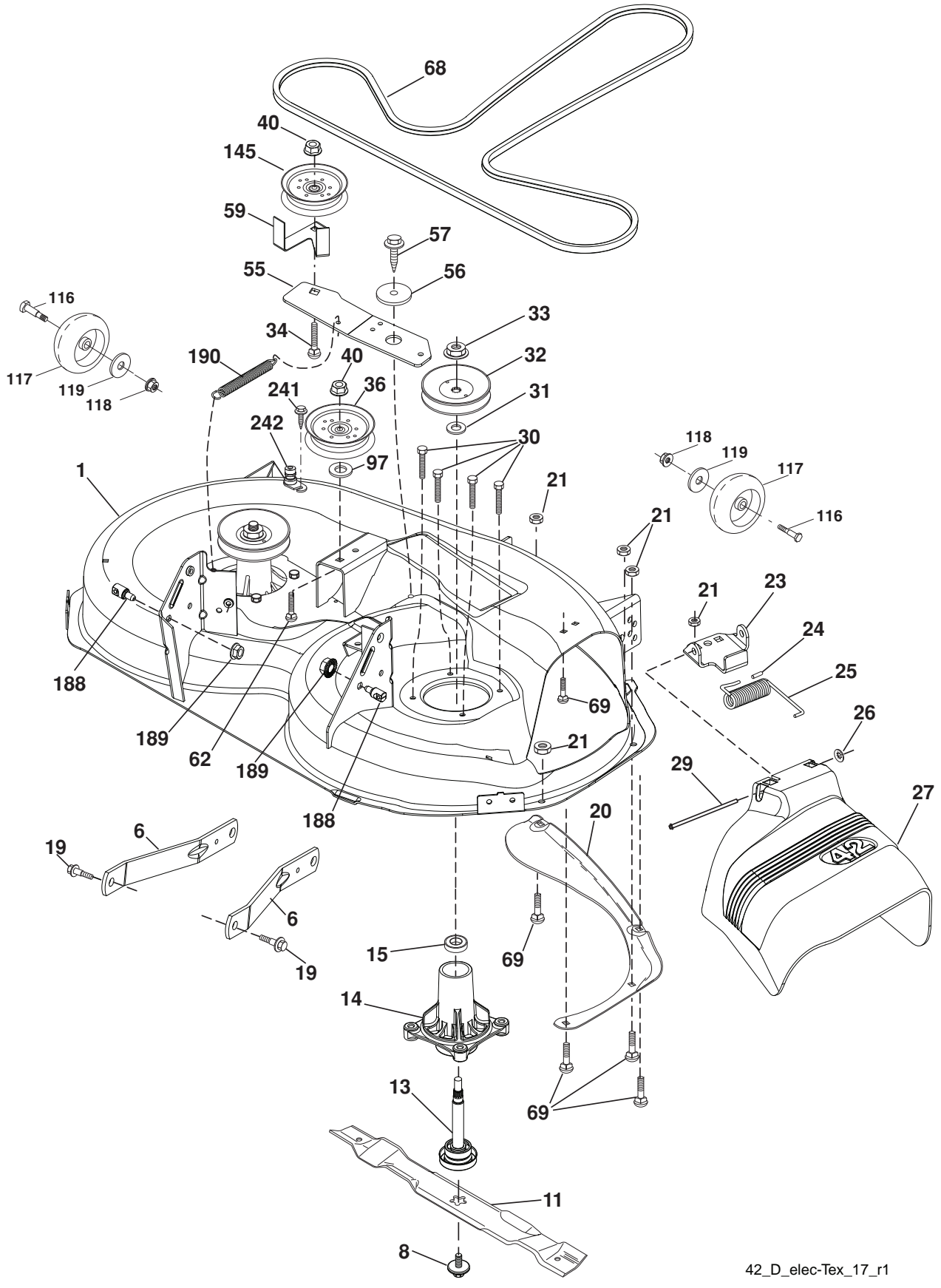
steering-tex_HUSQSR_19

**TRACTOR - - MODEL NO. LTH2142D (96041017200), PRODUCT NO. 960 41 01-72
STEERING ASSEMBLY 41**

| KEY NO. | PART NO. | DESCRIPTION |
|------------|--------------|-------------------------------------|
| 1 | 532 41 64-80 | Wheel, Steering |
| 2 | 532 41 35-91 | Axle Asm., Front |
| 4 | 532 40 30-87 | Spindle Asm., LH |
| 5 | 532 40 30-88 | Spindle Asm., RH |
| 6 | 532 12 49-31 | Washer, Thrust |
| 7 | 532 12 17-48 | Washer 25/32 x 1-5/8 x 16 Ga. |
| 8 | 812 00 00-29 | Ring, Klip #T5304-75 |
| 9 | 532 12 12-32 | Cap, Spindle |
| 13 | 532 12 17-49 | Washer 25/32 x 1-1/4 x 16 Ga. |
| 14 | 810 04 06-00 | Washer, Lock Hvy Hlcl Spr 3/8 |
| 15 | 873 54 06-00 | Nut, Crown Lock 3/8-24 unf |
| 16 | 532 42 93-73 | Shaft Steering |
| 19 | 532 19 47-29 | Plate Steering |
| 20 | 532 41 11-39 | Boot, Steering |
| 21 | 532 18 67-37 | Adapter, Wheel Steering |
| 22 | 532 42 05-37 | Strg. |
| 26 | 532 41 59-87 | Insert, Wheel Steering |
| 28 | 817 00 06-12 | Screw 3/8-16 x 3/4 |
| 33 | 810 04 05-00 | Washer Lock 5/16 |
| 35 | 532 19 47-32 | Gear, Sector Plate |
| 45 | 819 11 38-12 | Washer 11/32 x 3/8 x 12 Ga. |
| 53 | 532 18 89-67 | Washer Hardened .793 x 1.637 x .060 |
| 57 | 532 40 74-65 | Bracket Upstop |
| 58 | 532 19 47-47 | Bolt Shoulder Sector Pivot CFM |
| 59 | 532 19 47-48 | Washer Thrust Sector Steering |
| 60 | 873 97 10-00 | Nut Flange Lock 5/8-11 |
| 61 | 532 19 47-40 | Draglink, LH |
| 62 | 532 19 47-41 | Draglink, RH |
| 63 | 817 00 05-12 | Screw 5/16-18 x 3/4 |
| 64 | 532 19 98-49 | Retainer Clip Spring Steering |
| 66 | 871 02 07-48 | Bolt Hex Fghd 7/16-14 x 3 Serr |
| 67 | 532 19 47-37 | Bushing PM Front Axle |
| 68 | 873 90 07-00 | Nut Lock Flange 7/16-14 Gr. 5 |
| 69 | 532 19 91-62 | Washer 1.5 x .505 x .118 |
| 70 | 532 19 61-97 | Bracket Deck Susp. Front |
| 71 | 532 19 07-52 | Shaft Extension Steering |
| 72 | 874 42 89-82 | Bolt Fin Hx 5/16-18 x 4 |
| 118 | 532 40 60-13 | Bushing |

NOTE: All component dimensions given in U.S. inches
1 inch = 25.4 mm

TRACTOR - - MODEL NO. LTH2142D (96041017200), PRODUCT NO. 960 41 01-72
 MOWER DECK **44**



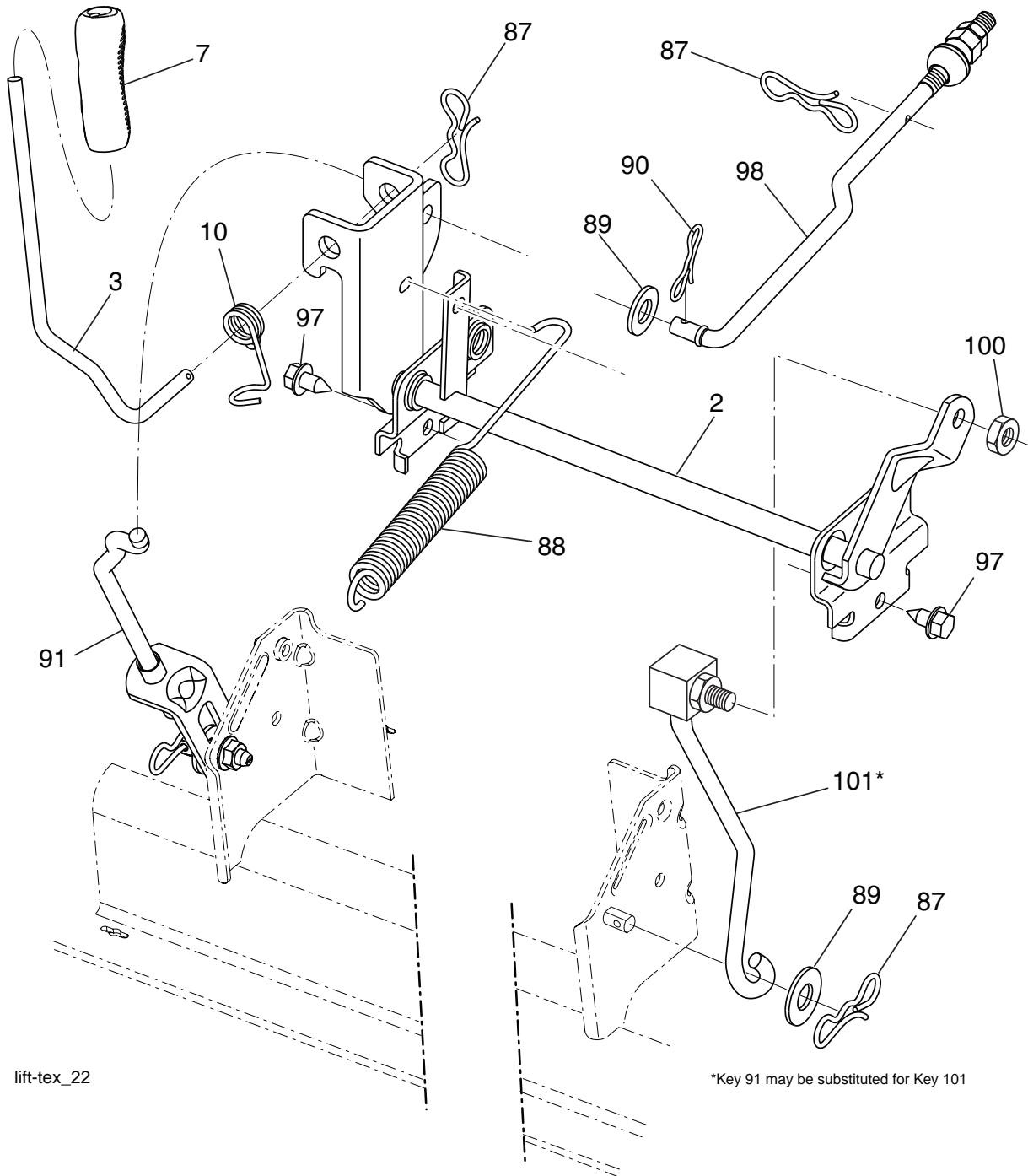
42_D_elec-Tex_17_r1

TRACTOR - - MODEL NO. LTH2142D (96041017200), PRODUCT NO. 960 41 01-72
MOWER DECK 44

| KEY NO. | PART NO. | DESCRIPTION |
|---------|--------------|--|
| 1 | 532 40 29-99 | Mower Deck Assembly, 42" |
| 6 | 532 19 51-86 | Arm Susp. Rear |
| 8 | 532 19 30-03 | Bolt/Washer Asm 7/16-20 unf (The following Blades are available) |
| 11 | 532 13 89-71 | Blade Mower 42" Hi-Lift (for bagging and discharging) |
| 13 | 532 19 28-72 | Shaft Assembly, Mandrel |
| 14 | 532 18 72-81 | Housing, Mandrel |
| 15 | 532 11 04-85 | Bearing, Ball, Mandrel |
| 19 | 532 19 65-39 | Bolt, Shoulder |
| 20 | 532 15 97-70 | Baffle, Vortex |
| 21 | 873 68 05-00 | Nut |
| 23 | 532 19 25-57 | Bracket, Deflector Mower 42" |
| 24 | 532 10 53-04 | Cap, Sleeve 80 x 112 Blk Mower |
| 25 | 532 19 70-26 | Spring, Torsion, Deflector |
| 26 | 532 11 04-52 | Nut, Push Phos & Oil |
| 27 | 532 40 30-04 | Shield, Deflector 42" Blk |
| 29 | 532 13 14-91 | Rod, Hinge 42" 6 75 W/G |
| 30 | 532 17 39-84 | Screw Thdrol |
| 31 | 532 18 76-90 | Washer, Spacer Mower Vented |
| 32 | 532 15 35-35 | Pulley, Mandrel |
| 33 | 532 40 02-34 | Nut, Toplock |
| 34 | 872 11 06-12 | Bolt Carr SH 3/8-16 x 1-1/2 Gr. 5 |
| 36 | 532 19 73-79 | Pulley Idler Flat |
| 40 | 873 90 06-00 | Nut Lock 3/8-16 |
| 55 | 532 43 71-10 | Arm, Idler |
| 56 | 532 19 90-92 | Spacer, Retainer |
| 57 | 817 00 06-16 | Screw 3/8-16 x 1 |
| 59 | 532 14 10-43 | Guard TUV Idler |
| 62 | 872 11 06-16 | Bolt Rdhd Sqnk 3/8-16 unc x 2 |
| 68 | 532 14 49-59 | V-Belt, 42" Mower |
| 69 | 872 14 05-05 | Bolt, Carriage 5/16-18 x 5/8 |
| 116 | 532 12 48-42 | Bolt, Shoulder |
| 117 | 532 18 86-06 | Wheel, Gauge |
| 118 | 873 90 06-00 | Nut Centerlock 3/8-16 unc |
| 119 | 819 12 14-14 | Washer 3/8 x 7/8 x 14 |
| 145 | 532 19 31-97 | Pulley, Idler, Flat |
| 188 | 532 19 51-61 | Stud Fastner W/D Anti-Rotation |
| 189 | 873 90 05-00 | Nut Lock Hex Flange 5/16-18 |
| 190 | 532 19 72-51 | Spring Mower Drive |
| 241 | 532 15 29-27 | Screw TT #10-32.5 3/8 Flange |
| 242 | 532 41 55-98 | Port Washout |
| -- | 532 19 28-70 | Mandrel Assembly (Includes Housing Shaft and Shaft Hardware Only - Pulley Not Included) |
| -- | 532 40 12-24 | Replacement Mower, Complete (Std. deck Order separately gauge wheel components Key Nos. 116-119) |

NOTE: All component dimensions given in U.S. inches
1 inch = 25.4 mm

TRACTOR - - MODEL NO. LTH2142D (96041017200), PRODUCT NO. 960 41 01-72
MOWER LIFT 45



lift-tex_22

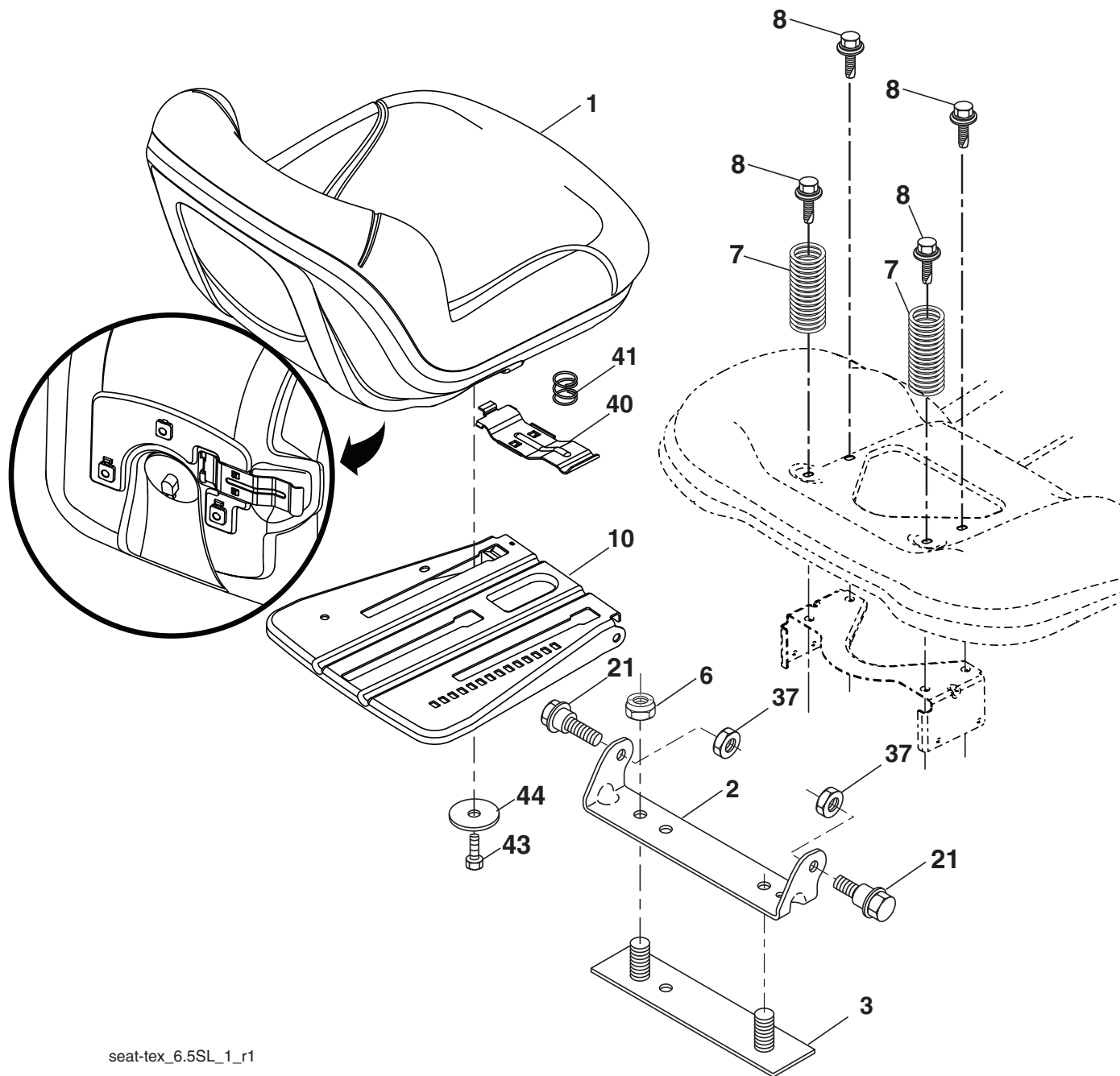
*Key 91 may be substituted for Key 101

| KEY NO. | PART NO. | DESCRIPTION |
|---------|--------------|------------------------------|
| 2 | 532 42 20-27 | Shaft Asm., Lift |
| 3 | 532 19 52-31 | Lever Asm., Lift RH |
| 7 | 532 41 15-55 | Grip, Lever |
| 10 | 532 19 63-14 | Spring Torsion |
| 87 | 532 19 42-09 | Pin Cotter 7/16 Bow Tie Lock |
| 88 | 532 41 07-10 | Spring Lift Assist |
| 89 | 819 19 19-12 | Washer Clear Zinc |
| 90 | 532 19 42-08 | Pin Cotter 5/16 Bow Tie Lock |

| KEY NO. | PART NO. | DESCRIPTION |
|---------|--------------|---------------------------------|
| 91 | 532 19 51-81 | Link Lift Susp Mower Rear |
| 97 | 817 00 06-12 | Screw Hex WSH THDR 3/8-16 x 3/4 |
| 98 | 532 19 52-70 | Link Lift Susp. Front Mower |
| 100 | 873 93 06-00 | Nut Lift Centerlock 3/8-16 |
| 101 | 532 40 70-03 | Link Asm. Lift Fxd |

NOTE: All component dimensions given in U.S. inches
 1 inch = 25.4 mm

**TRACTOR - - MODEL NO. LTH2142D (96041017200), PRODUCT NO. 960 41 01-72
SEAT ASSEMBLY 42**



seat-tex_6.5SL_1_r1

| KEY NO. | PART NO. | DESCRIPTION |
|---------|--------------|-------------------------------|
| 1 | 532 42 40-67 | Seat |
| 2 | 532 18 01-66 | Bracket Pivot Fender |
| 3 | 532 14 06-75 | Strap, Asm Fender |
| 6 | 873 80 06-00 | Nut, Lock w/Ins. 3/8-16 unc |
| 7 | 532 12 41-81 | Spring, Seat Cprsn |
| 8 | 532 17 18-77 | Bolt 5/16-18 unc x 3/4 w/Sems |
| 10 | 532 19 69-77 | Pan, Seat |
| 21 | 532 17 18-52 | Bolt, Shoulder 5/16-18 |

| KEY NO. | PART NO. | DESCRIPTION |
|---------|--------------|-------------------------------|
| 37 | 873 80 05-00 | Nut, Lock 5/16-18 unc |
| 40 | 532 19 76-61 | Handle Slide |
| 41 | 532 19 82-00 | Spring Latch Seat |
| 43 | 874 76 06-12 | Bolt Fin Hex 3/8-16 unc x 3/4 |
| 44 | 819 13 38-12 | Washer 13/32 x 2-3/8 x 12 Ga. |

NOTE: All component dimensions given in U.S. inches
1 inch = 25.4 mm

