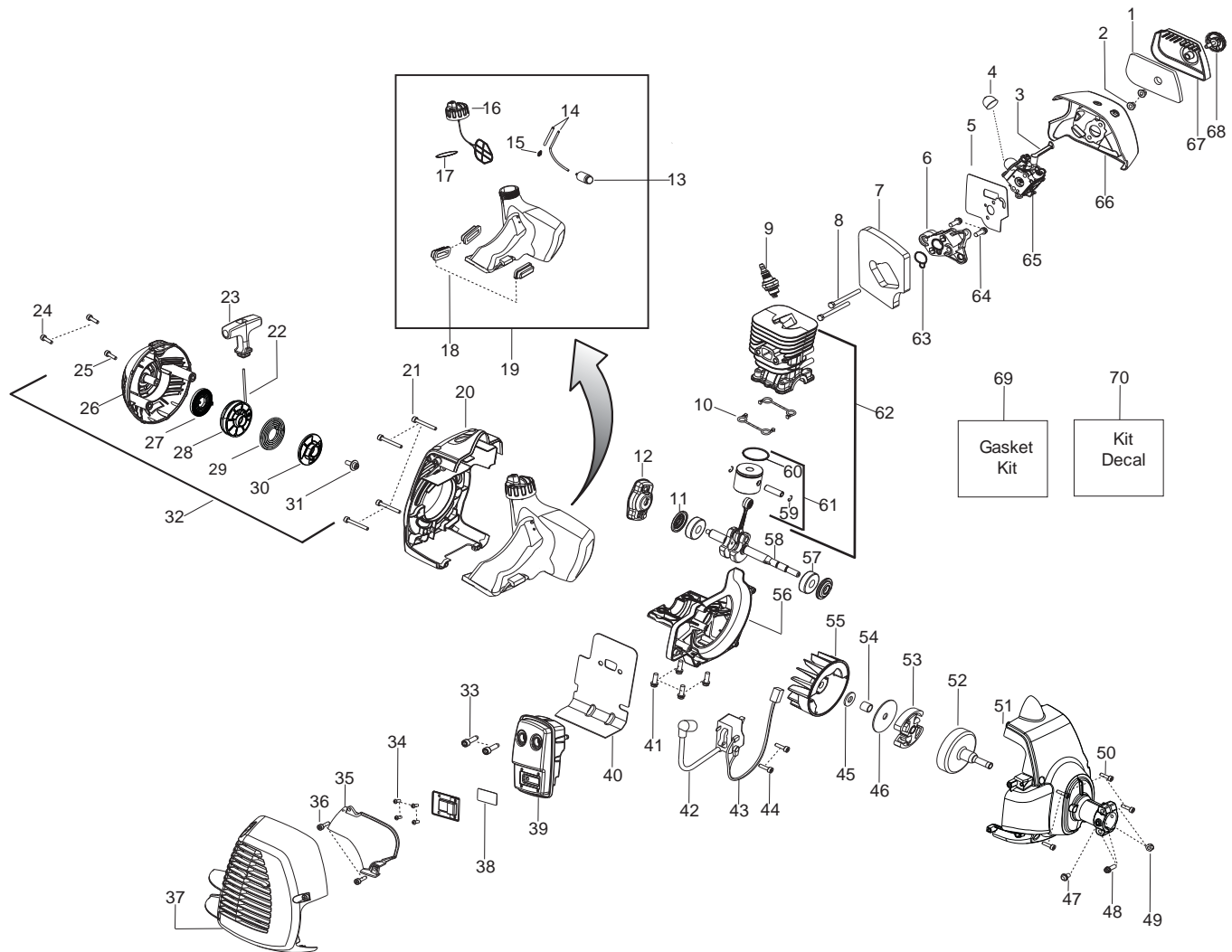


Parts List No. 545192146		Husqvarna ® PARTS LIST	MODEL 128RJ (CAN)
Date 5/11/12	Replaces 545192146 - 8/20/10		NOTE : Illustration may differ from actual model due to design changes.



Ref.	Part No.	Description	Ref.	Part No.	Description	Ref.	Part No.	Description
1.	530150253	Filter	26.	525455501	Starter Hsg.	47.	★★★★★	Screw
2.	530016101	Nut - Carb. Screw	27.	545008087	Kit - Spring	48.	★★★★★	Screw
3.	530057844	Lever - Choke	28.	579066801	Kit - Starter Pulley	49.	530015768	Locknut
4.	530058709	Bulb - Purge	29.	578465101	Spring - Driver	50.	530016456	Screw
5.	545008086	Kit - Carb. Gasket (Incl 7,63)	30.	579366201	Pulley - Driver	51.	★★★★★	Assy - Fan Housing
6.	530035596	Adaptor - Carb.	31.	530016468	Screw	52.	★★★★★	Assy - Clutch Drum
7.	----	Foam - Gasket (Ref.#5,69)	32.	579063101	Assy - Starter Hsg. (Incl. 22,23,25-31)	53.	530055122	Assy - Clutch
8.	530016400	Bolt	33.	530058982	Bolt - Muffler	54.	530057852	Spacer
9.	952030201	Plug - Spark (RCJ-8Y)	34.	530015241	Screw	55.	530039242	Flywheel
10.	----	Seal - Cylinder (Ref.#69)	35.	530150440	Shield - Heat	56.	545195601	Crankcase - Cast
11.	----	Seal - Crankshaft (Ref.#69)	36.	530016449	Screw	57.	545013401	Bearing
12.	503873305	Assy - Starter Pawl	37.	576215001	Kit - Muffler Guard (Incl. Screws)	58.	545195202	Assy - Crankshaft
13.	530095646	Assy - Fuel Filter	38.	545030501	Kit - Spark (Incl. 34)	59.	530015162	Retainer - Piston Pin
14.	★★★★★	Kit - Fuel Line (Incl. 15)	39.	545031502	Kit - Muffler (Incl. 33,34,38,40)	60.	530019283	Ring - Piston
15.	530023877	Fitting - Fuel Line	40.	----	Gasket (Ref.#39,69)	61.	545081814	Kit - Piston (Incl. 59,60)
16.	★★★★★	Assy - Cap w/ret.(Incl. 17)	41.	530015897	Screw	62.	545008083	Kit - Cyl./Piston(Incl. 61)
17.	----	O-Ring (Ref.#16,19,69)	42.	545046701	Module - Ignition	63.	----	Seal (Ref.#5,69)
18.	530059780	Isolator - Fuel Tank	43.	530039227	Assy - Leadwire	64.	530015897	Screw
19.	★★★★★	Kit - Fuel Tank Assy. (Incl. 14,15,16,17)	44.	530016456	Screw	65.	545081848	Kit - Carb. (Incl. 3,4,5)
20.	576153201	Shroud - Rear	45.	530016463	Washer	66.	576459001	Airbox
21.	530016448	Screw	46.	530094189	Washer - Clutch	67.	530057846	Cover - Air Box
22.	545008079	Kit - Rope				68.	530059796	Assy - Knob
23.	545043204	Handle - Starter				69.	545008084	Kit - Gasket (Incl. 5,7,10,11,17,40,63)
24.	530016426	Screw				70.	545003327	Kit - Decal
25.	530016449	Screw						

✓ = New Part Number For This IPL

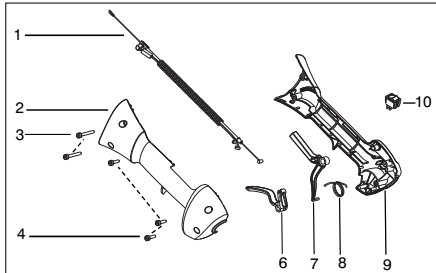
★ = Refer to the Service Reference Indicated for more information.(Located at the END of the IPL)

Parts List No. 545192146		Husqvarna ® PARTS LIST	MODEL 128RJ (CAN)
Date 5/11/12	Replaces 545192146 - 8/20/10		NOTE : Illustration may differ from actual model due to design changes.

***** **Service Reference** *****

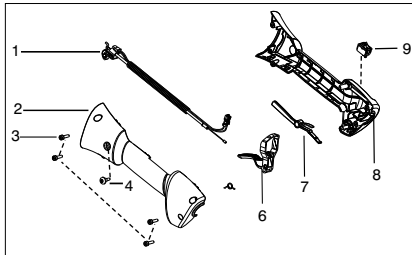
Note : Due to product improvements, your unit may have a different throttle housing assembly.
Please refer to the serial number on your unit and order the parts below.

Serial Number - 2010-72N and lower, please use the following parts:



- Ref.# 1 - 545125301 - Assy-Cable/Wire Harness
- Ref.# 2 - 545062001 - Housing-throttle (RH)
- Ref.# 3 - 530016448 - Screw
- Ref.# 4 - 530016449 - Screw
- Ref.# 6 - 545066001 - Trigger
- Ref.# 7 - 530059804 - Lockout - Throttle
- Ref.# 8 - 545045601 - Spring - Lockout
- Ref.# 9 - 545067001 - Housing-throttle (LH)
- Ref.#10- 545030601 - Kit - Switch

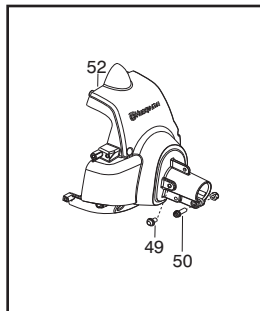
Serial Number - 2010-73N and higher, please use the following parts:



- Ref.# 1 - 576139401 - Assy. - Cable/Wire Harness
- Ref.# 2 - 545223001 - Housing-throttle (RH)
- Ref.# 3 - 530016449 - Screw
- Ref.# 4 - 530015805 - Screw
- Ref.# 6 - 574355301 - Trigger
- Ref.# 7 - 574355401 - Lockout - Throttle
- Ref.# 8 - 545223201 - Housing-throttle (LH)
- Ref.# 9 - 545049309 - Switch

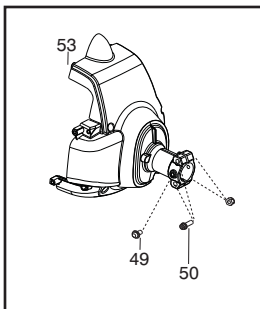
***** **Service Reference** *****

Note : Due to product improvements, your unit may have a different fan housing assembly.
Please refer to the serial number on your unit and order the parts below.



Serial Number - 2010-72N and lower, please use the following parts:

- Ref.# 49 - 530016469 - Screw
- Ref.# 50 - 530016470 - Screw
- Ref.# 52 - 545017501 - Assy. - Fan Housing



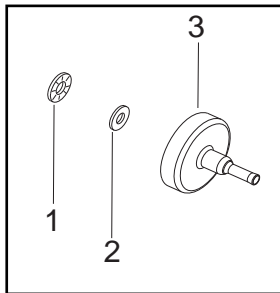
Serial Number - 2010-73N and higher, please use the following parts:

- Ref.# 49 - 530015805 - Screw
- Ref.# 50 - 530015774 - Screw
- Ref.# 53 - 545205201 - Assy. - Fan Housing

Parts List No. 545192146		Husqvarna ® PARTS LIST	MODEL 128RJ (CAN)
Date 5/11/12	Replaces 545192146 - 8/20/10		NOTE : Illustration may differ from actual model due to design changes.

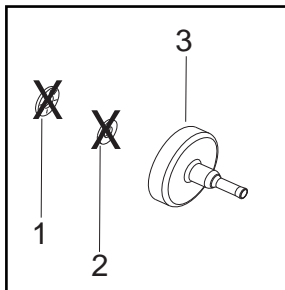
***** **Service Reference** *****

Note : Due to product improvements, your unit may have a different clutch drum assembly.
Please refer to the serial number on your unit and order the parts below.



Serial Number - 2011-350N and lower, please use the following parts:

- Ref.# 1 - 545173401 - Thrust Bearing
- Ref.# 2 - 530016420 - Thrust Washer
- Ref.# 3 - 530150039 - Assy. - Clutch Drum



Serial Number - 2011-351N and higher, please use the following parts:

- Ref.# 1 - Thrust Bearing is NOT REQUIRED
- Ref.# 2 - Thrust Washer is NOT REQUIRED
- Ref.# 3 - 580446601 - Kit - Clutch Drum

***** **Service Reference** *****

Note : Due to product improvements, your unit may have a different gas tank assembly and fuel cap.
Please refer to the serial number on your unit and order the parts below.

Serial Number - 2009-001N thru 2012-090N, please use the following parts:

- Page 2, Ref.# 14 - 530069599 Kit - Fuel Line
- Page 2, Ref.# 16 - 530150350 Cap - Fuel
- Page 2, Ref.# 19 - 545180870 Kit - Fuel Tank Assembly

Serial Number - 2012-091N and higher, please use the following parts:

- Page 2, Ref.# 14 - ----- (REF. # 19)
- Page 2, Ref.# 16 - 578931501 Cap - Fuel
- Page 2, Ref.# 19 - 578942901 Assembly - Fuel Tank