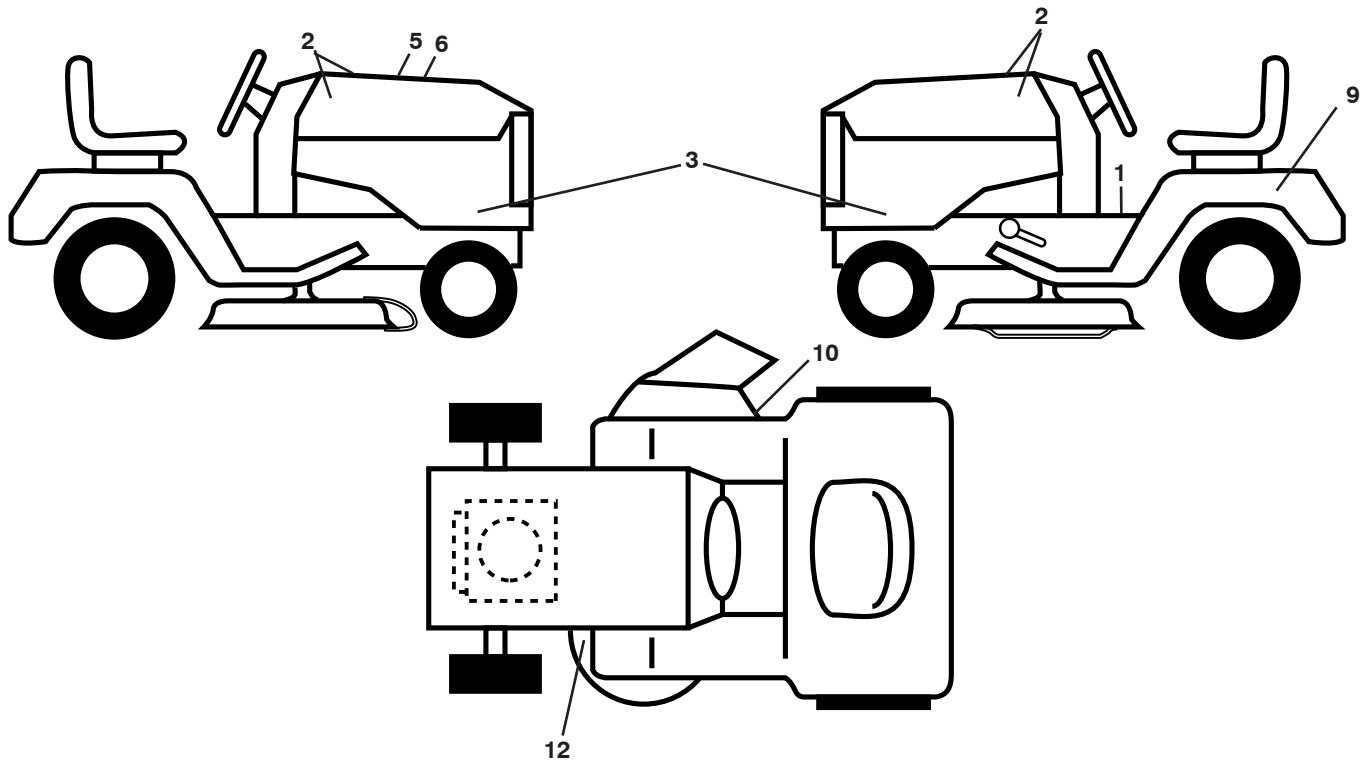


917.289543

(YTH20K46)

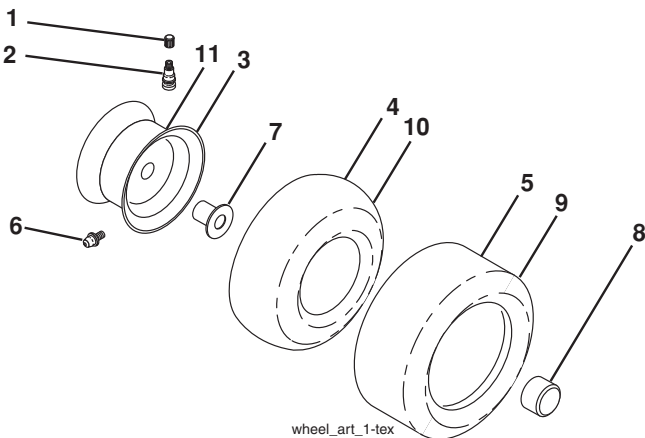
Owner's Manual

**TRACTOR - - MODEL NUMBER 917.289543, PRODUCT NO. YTH20K46
DECALS**



KEY NO.	PART NO.	DESCRIPTION	KEY NO.	PART NO.	DESCRIPTION
1	532 41 16-58	Decal, Operators	12	532 16 03-96	Decal, Mower V-Belt Schematic
2	532 42 91-96	Decal, Badge	--	532 16 69-60	Decal, Bypass
3	532 41 01-08	Decal, Hood Panel SD	--	532 41 08-05	Pad, Footrest, LH
5	532 42 38-29	Decal, Customer Respons.	--	532 41 08-06	Pad, Footrest, RH
6	532 43 47-88	Decal, Replacement	--	532 43 53-18	Manual, Owner's (English)
9	532 14 50-05	Decal, Battery Dnge/Poi	--	532 43 53-19	Manual, Owner's (French)
10	532 17 05-63	Decal, Warning			

WHEELS AND TIRES



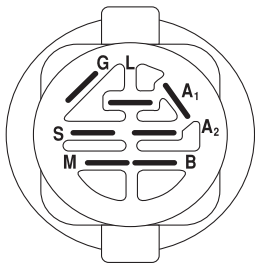
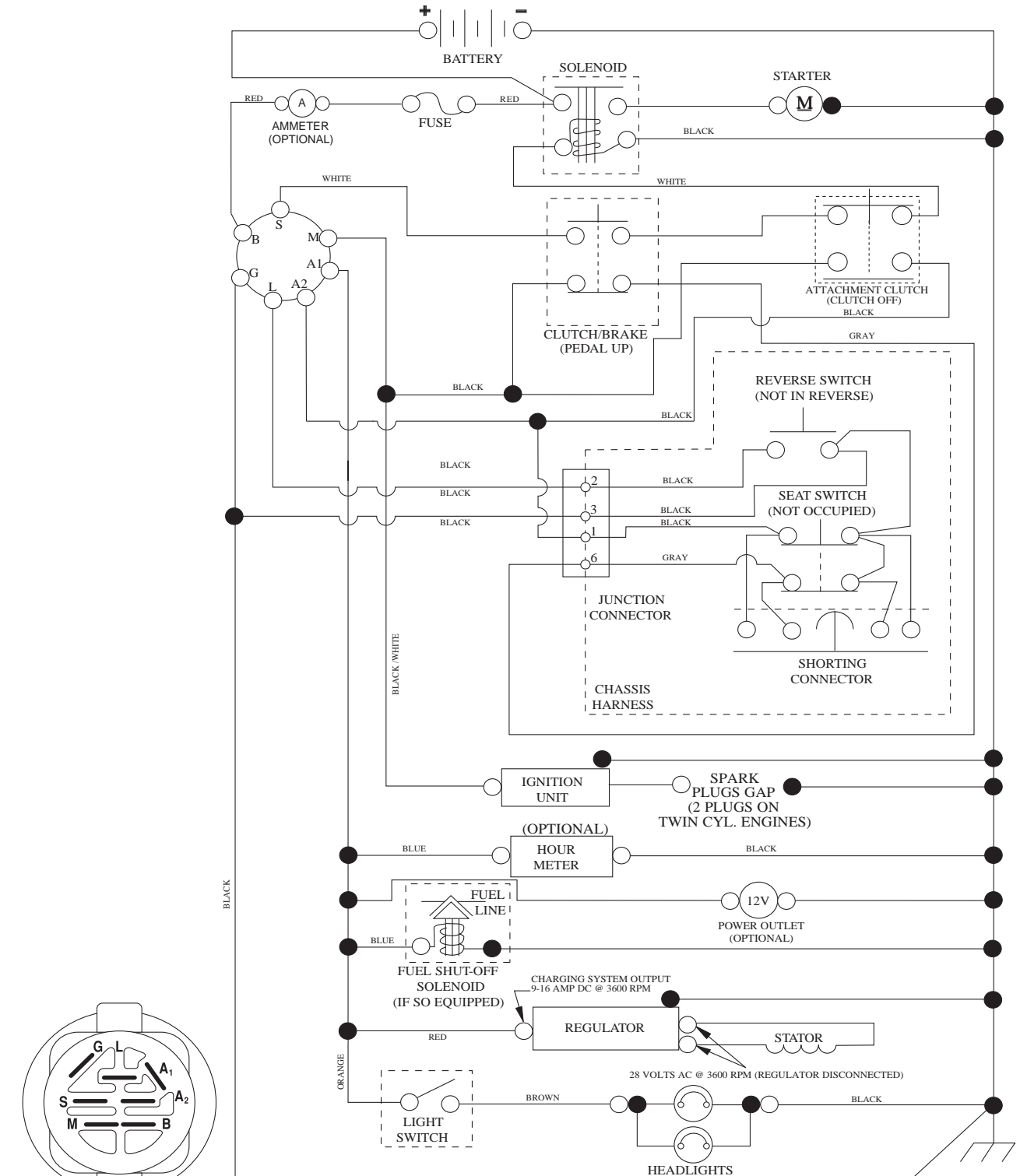
KEY NO.	PART NO.	DESCRIPTION
1	532 05 91-92	Cap Valve Tire
2	532 06 51-39	Stem Valve
3	532 13 83-36	Rim Front Service
4	532 05 99-04	Tube Front (Service Item Only)
5	532 10 62-22	Tire Front 15 x 6.0-6 Service
6	532 12 49-57	Fitting Grease (Front Wheel Only)
7	532 12 49-59	Bearing Flange (Front Wheel Only)
8	532 17 50-39	Cap Axle Blk 1 50 x 1 00
9	532 42 05-31	Tire R T 18 x 9.5-8 Turf Saver LT
10	532 12 49-26	Tube Rear (Service Item Only)
11	532 13 83-37	Rim Asm 8" rear Service
--	532 14 43-34	Sealant, Tire (10 oz. Tube)

NOTE: All component dimensions given in U.S. inches
1 inch = 25.4 mm

TRACTOR -- MODEL NUMBER 917.289543, PRODUCT NO. YTH20K46

SCHEMATIC

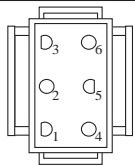
SCH10



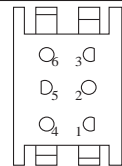
IGNITION SWITCH

POSITION	CIRCUIT	"MAKE"
OFF	M+G+A1	
RUN/OVERRIDE	B+A1	
RUN	B+A1	L+A2
START	B + S + A1	

03107



CHASSIS HARNESS CONNECTOR (MATING SIDE)



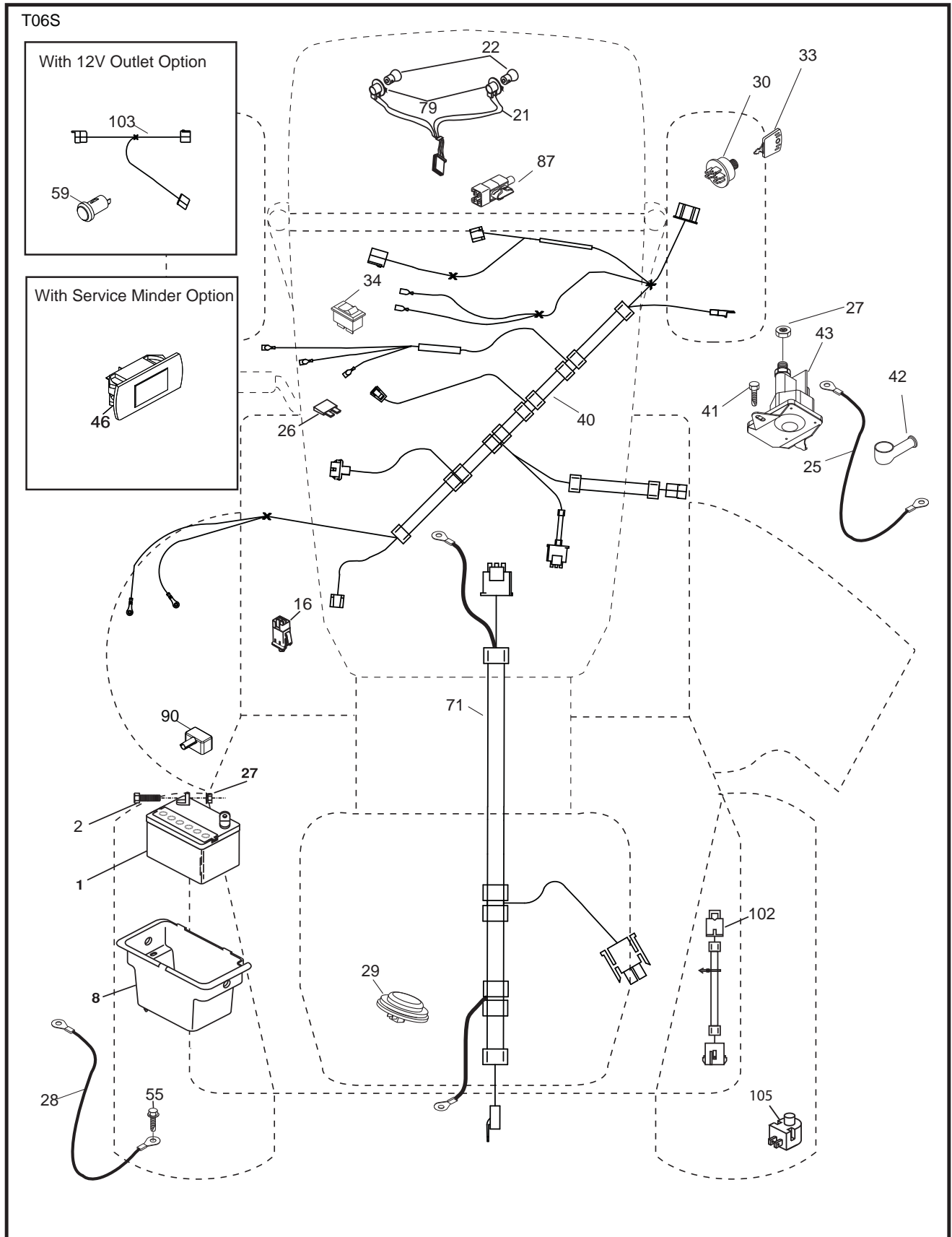
DASH HARNESS CONNECTOR (MATING SIDE)

WIRING INSULATED CLIPS
NOTE: IF WIRING INSULATED CLIPS WERE REMOVED FOR SERVICING OF UNIT, THEY SHOULD BE RE-INSTALLED TO PROPERLY SECURE YOUR WIRING.

●
NON-REMOVABLE CONNECTIONS

○
REMOVABLE CONNECTIONS

TRACTOR - - MODEL NUMBER 917.289543, PRODUCT NO. YTH20K46 ELECTRICAL



**TRACTOR - - MODEL NUMBER 917.289543, PRODUCT NO. YTH20K46
ELECTRICAL**

KEY NO.	PART NO.	DESCRIPTION
1	532 16 34-65	Battery
2	874 76 04-12	Bolt Hex Head 1/4-20 x 3/4
8	532 19 32-28	Box Battery
16	532 17 61-38	Switch Interlock Push-In
21	532 40 02-52	Harness Socket Light w/4152J
22	532 00 41-52	Bulb Light
25	532 41 28-95	Cable Starter
26	532 17 51-58	Fuse
27	873 51 04-00	Nut Keps Hex 1/4-20 unc
28	532 19 88-85	Cable, Ground
29	532 40 15-45	Switch, Seat
30	532 19 33-50	Switch, Ign
33	532 41 19-35	Key / Chain
34	532 11 07-12	Switch Light / Reset
40	532 40 04-49	Harness Ign.
41	817 72 04-08	Screw Thd Cut 1/4-20 x 1/2
42	532 13 15-63	Cover, Terminal
43	532 19 25-07	Solenoid
46	532 40 17-63	Gauge Hourmeter
55	817 06 05-12	Screw Thdrol 5/16-18 x 3/4 TYTT
71	532 40 10-98	Harness Ign. Dash
79	532 17 52-42	Socket Asm. Bulb Twistlock
87	532 19 78-02	Switch Interlock Clutch Cable
90	532 40 07-25	Cover Terminal
102	532 40 44-54	Harness Pigtail
105	532 40 75-68	Switch Reverse TT GT

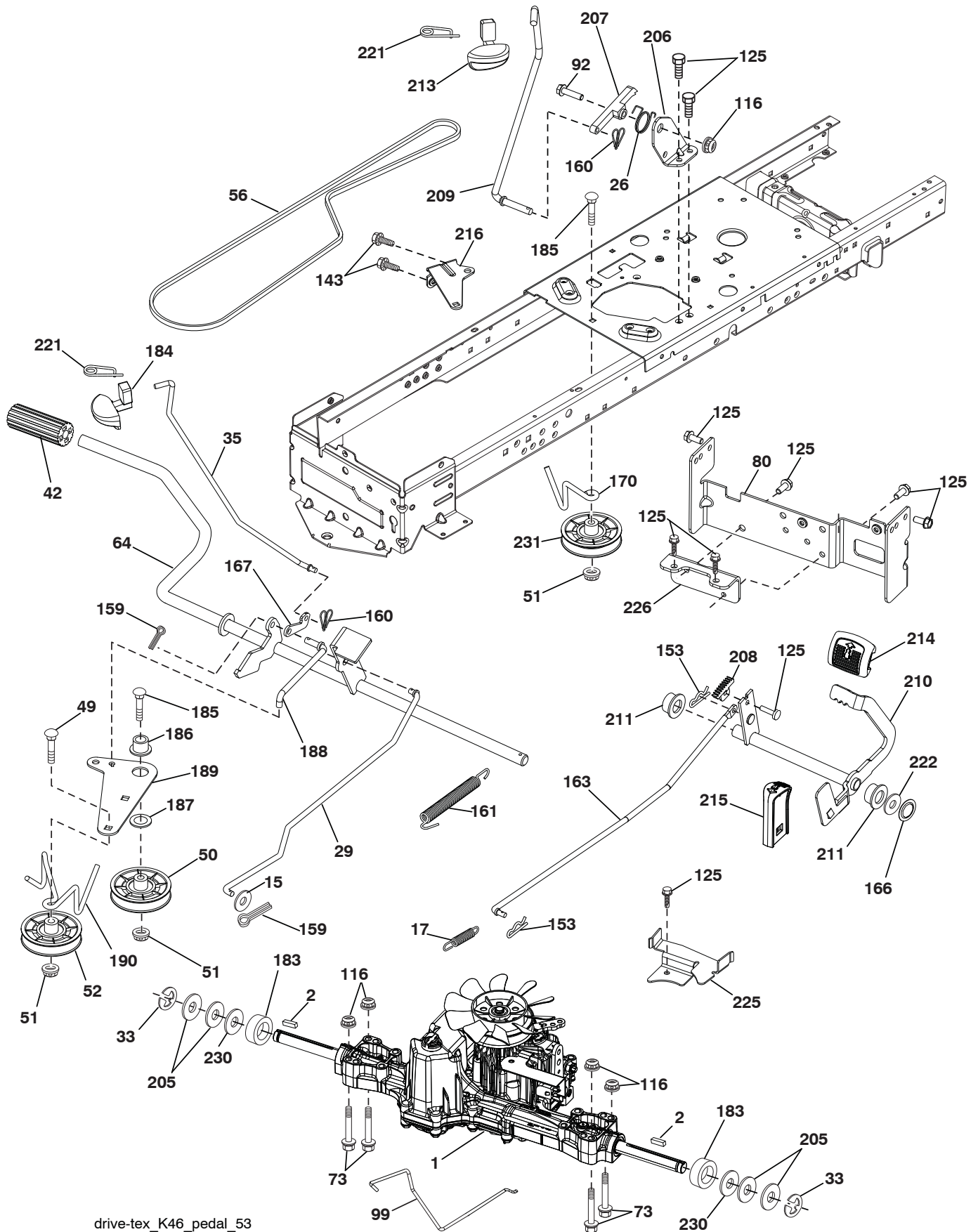
NOTE: All component dimensions given in U.S. inches
1 inch = 25.4 mm

**TRACTOR - - MODEL NUMBER 917.289543, PRODUCT NO. YTH20K46
CHASSIS**

KEY NO.	PART NO.	DESCRIPTION
3	532 43 07-71	Logo Crown
5	532 40 87-03	Dash
14	532 41 10-46	Hood
15	532 19 89-07	Lens LH
18	532 40 86-07	Grille/Lens Asm.
25	532 19 89-06	Lens RH
34	532 19 61-25	Plate Engine
36	817 06 05-12	Screw 5/16-18 x 3/4
37	532 41 87-14	Fender
52	873 68 05-00	Nut Lock 5/16-18
58	532 41 22-80	Drawbar Upper
68	817 49 05-08	Screw Thdrol 5/16-18 x 1/2
130	532 41 63-58	Screw #10 x 0.750 BOS Thread
137	532 40 75-90	Bumper Dash
138	532 40 29-54	Cupholder
150	532 19 85-13	Air Duct
152	532 19 95-35	Shield Browning
159	817 00 06-12	Screw Hexwsh Thdr 3/8-16 x 3/4
162	532 14 24-32	Screw
175	532 19 63-04	Crossmember
176	532 40 07-76	Screw 10-24 x 5/8
177	532 19 52-27	Bushing Steering
178	532 19 97-82	Cargo Net Asm.
180	532 41 50-63	Chassis
181	532 40 30-25	Bushing Mtg. Fender Crgo
182	532 40 68-59	Dash Lower
183	874 52 05-20	Bolt 5/16-18 x 1-1/4 Full Thread
189	817 00 05-12	Screw 5/16-18 x 3/4
194	873 90 05-00	Nut Lock Hex Flange 5/16-18
195	532 40 41-37	Plug Hole Dash Lower
196	532 41 45-80	Console Asm. Deck Lift
202	532 40 30-48	Vent Side Hood RH
203	532 40 30-76	Vent Side Hood LH
204	532 41 66-13	Vent Top Hood
205	532 40 17-09	Skirt Hood Side RH
206	532 40 17-11	Skirt Hood Side LH
207	532 19 71-98	Bezel RH
208	532 19 71-99	Bezel LH
209	532 19 91-30	Insert Hex Top RH
210	532 19 91-31	Insert Hex Top Lh
211	532 19 91-32	Insert Hex Bottom RH
212	532 19 91-33	Insert Hex Bottom LH
213	874 76 05-12	Bolt 5/16-18 x 3/4
214	532 19 91-45	Clip Retainer Tinner
217	532 40 91-67	Rod Pivot
218	532 19 63-95	X-Piece Hood Stop
228	532 19 51-61	Stud Fastner
234	532 40 47-42	Bumper Hood
235	532 40 61-29	Spacer Fender
236	873 93 05-00	Nut Lock 5/16-18 unc
238	532 40 86-06	Trim Husq.
287	817 60 04-06	Screw Hex Washhead 1/4-20 x 3/8
298	532 11 04-52	Nut Push

NOTE: All component dimensions given in U.S. inches
1 inch = 25.4 mm

TRACTOR - - MODEL NUMBER 917.289543, PRODUCT NO. YTH20K46 DRIVE



drive-tex_K46_pedal_53

TRACTOR - - MODEL NUMBER 917.289543, PRODUCT NO. YTH20K46

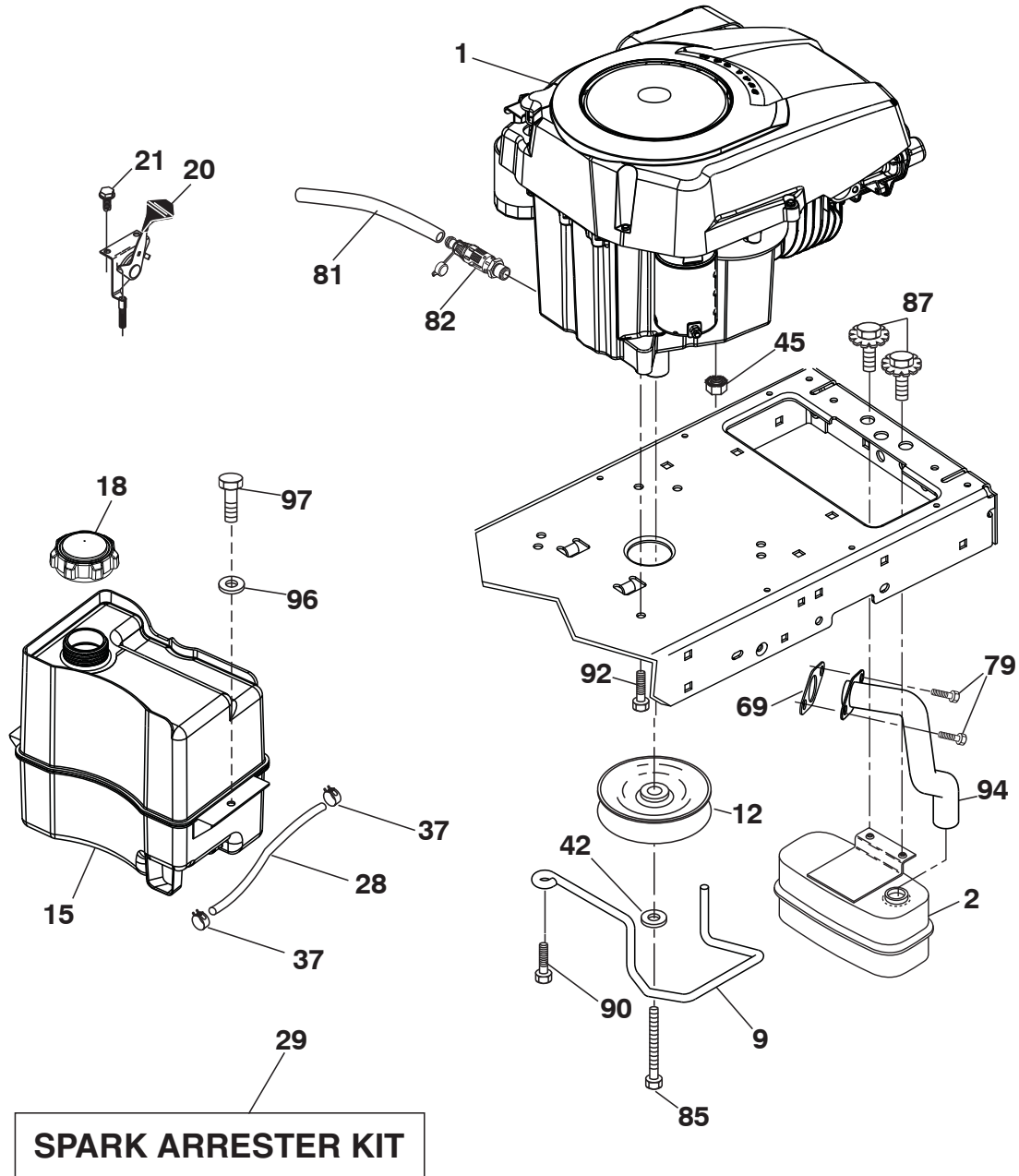
DRIVE

KEY NO.	PART NO.	DESCRIPTION
1	-----	Transaxle, TUFFTORQ K46 BT (See Transaxle breakdown)
2	532 12 35-83	Key
15	819 13 13-16	Washer 13/32 x 13/16 x 16 Ga.
17	532 41 36-78	Spring, Brake
26	532 19 96-79	Spring Return Cruise
29	532 40 38-06	Rod, Brake
33	812 00 00-01	Ring E
35	532 19 95-91	Rod, Brake, Park
42	532 12 48-72	Cover, Foot Pedal
49	872 11 06-14	Bolt
50	532 19 43-27	Pulley Idler Flat
51	873 90 06-00	Lock Nut 3/8-16
52	532 19 43-26	Idler V-Groove 910" Offset
56	532 13 09-69	V-Belt, Drive
64	532 19 78-65	Shaft Asm. Pedal Brake Control
73	874 49 05-44	Bolt Hex Flghd 5/16-18 Gr. 5
80	532 41 00-24	Bracket Strap Torque
92	874 76 05-20	Bolt Fin Hex 5/16-18 unc x 1.25
99	532 41 57-42	Rod Spring Bypass
116	873 90 05-00	Nut Lock Hex Flange 5/16-18
125	817 00 05-12	Screw 5/16-18 x 3/4
143	817 49 05-08	Screw 5/16-18 x 1/2
153	532 12 47-88	Retainer Spring
159	876 02 04-12	Pin Cotter 1/8 x 3/4
160	532 16 94-84	Retainer Clip
161	532 10 57-09	Spring, Return, Clutch
163	532 40 10-34	Rod Pedal Control
166	532 42 91-64	Nut Push
167	532 40 52-57	Latch Brake Parking
170	532 41 34-30	Keeper Belt Centerspan

KEY NO.	PART NO.	DESCRIPTION
183	532 13 70-57	Spacer Axle
184	532 40 31-18	Handle Parking Brake
185	872 11 06-22	Bolt Rdhd 3/8-16 unc x 2-3/4 Gr. 5
186	532 19 43-21	Spacer Retainer
187	819 13 32-10	Washer
188	532 19 43-23	Link Clutch Ground Drive
189	532 19 43-17	Bellcrank Ground Drive
190	532 19 43-18	Keeper Bellcrank Ground Drive
205	532 12 17-48	Washer
206	532 19 78-67	Bracket Mount Latch Cruise
207	532 19 78-68	Latch Control Cruise
208	532 19 78-69	Gear Sector Control Cruise
209	532 19 95-92	Rod Control Cruise
210	532 40 09-80	Rocker Asm. Pedal Control
211	532 12 01-83	Bearing Nylon
213	532 40 31-19	Knob Control Cruise
214	532 42 12-63	Pedal Forward
215	532 40 17-23	Pedal Reverse
216	532 19 61-31	Bracket Pulley Idler
221	532 40 31-87	Retainer Spring Clip Handle
222	879 21 20-10	Washer 21/32 x 1-1/4 10 Ga.
225	532 40 33-19	Keeper Belt Trans.
226	532 40 15-64	Bracket Mount Torque
230	532 18 89-67	Washer Hardened
231	532 40 72-87	Idler V-Groove 1.688" Offset
--	532 43 18-83	Kit Bumper

NOTE: All component dimensions given in U.S. inches
1 inch = 25.4 mm

**TRACTOR - - MODEL NUMBER 917.289543, PRODUCT NO. YTH20K46
ENGINE**



engine-tex_Kohl_20_r1

**TRACTOR - - MODEL NUMBER 917.289543, PRODUCT NO. YTH20K46
ENGINE**

KEY NO.	PART NO.	DESCRIPTION
1	- - - - -	Engine Kohler Model No. SV600-0222
2	532 18 86-55	Muffler
9	532 19 43-20	Keeper Belt Engine
12	532 40 54-72	Pulley Engine
15	532 40 74-89	Tank Fuel
18	532 43 02-20	Cap Asm
20	532 40 15-08	Control Throttle/Choke
21	532 41 63-58	Screw #10 x 0.750 BOS Thread
28	532 40 11-37	Fuel Line
29	532 13 71-80	Spark Arrester Kit
37	532 12 34-87	Clamp Hose
42	810 04 07-00	Washer Lock 7/16
45	873 51 04-00	Nut Keps Hex 1/4-20 unc
69	532 18 59-09	Gasket
79	532 19 23-34	Screw Socket Head
81	532 14 84-56	Tube Drain Oil Easy
82	532 42 82-87	Valve Drain Oil
85	532 17 39-37	Bolt Hex 7/16-20 x 4 x Gr. 5-1.5 Thr
87	532 17 18-77	Bolt 5/16-18 unc x 3/4 w/Sems
90	817 00 06-16	Screw 3/8-16 x 1
92	817 12 06-16	Screw 3/8-16 x 1
94	532 18 86-54	Tube Exhaust
96	819 09 14-16	Washer 9/32 x 7/8 x 16 Ga.
97	817 67 04-12	Screw Hexwsh Thdrol 1/4-20 x 3/4

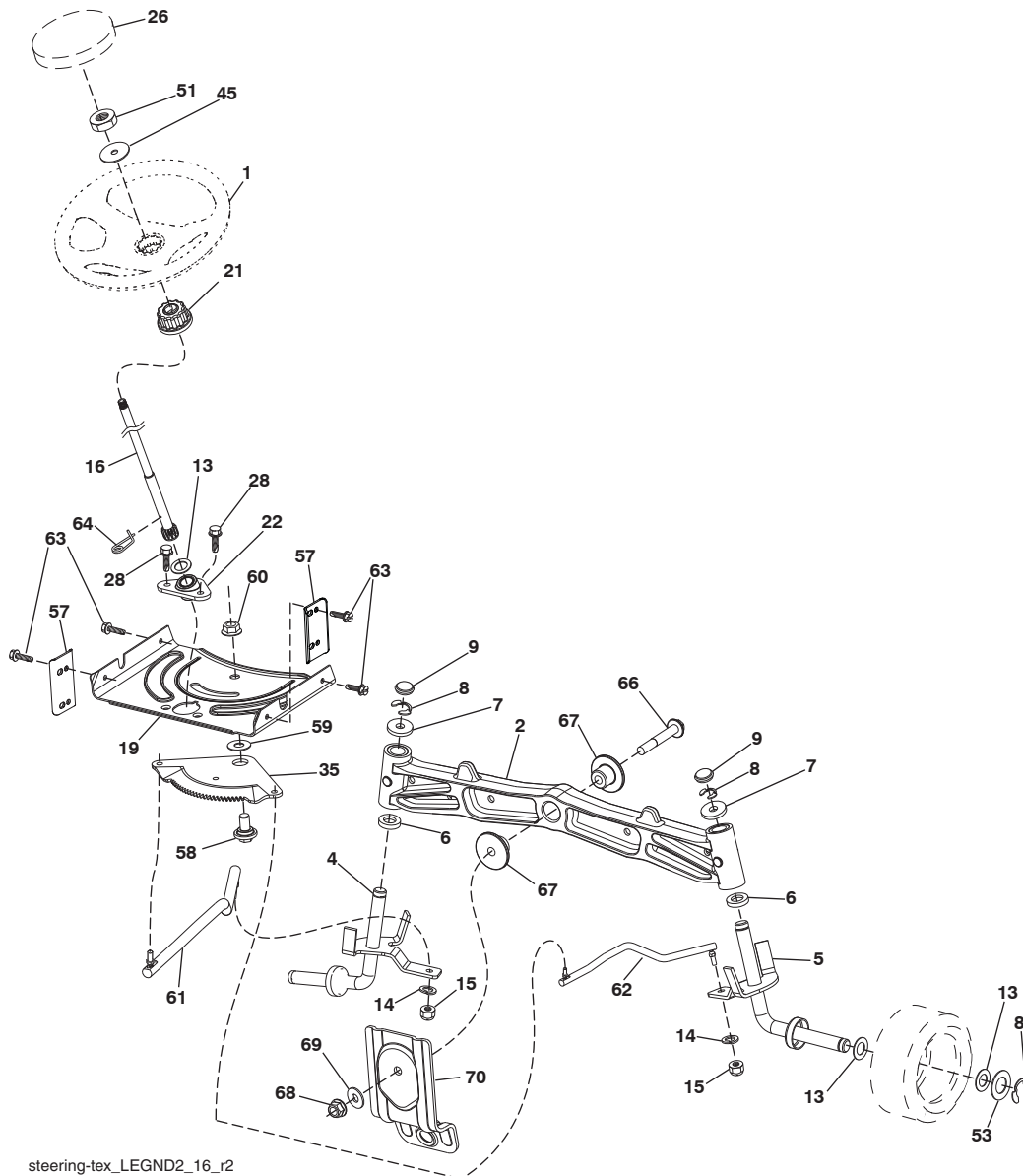
NOTE: All component dimensions given in U.S. inches
1 inch = 25.4 mm

For engine service and replacement parts, call the toll free number for your engine manufacturer listed below:

Kohler Co. 1-800-544-2444

TRACTOR - - MODEL NUMBER 917.289543, PRODUCT NO. YTH20K46

STEERING ASSEMBLY

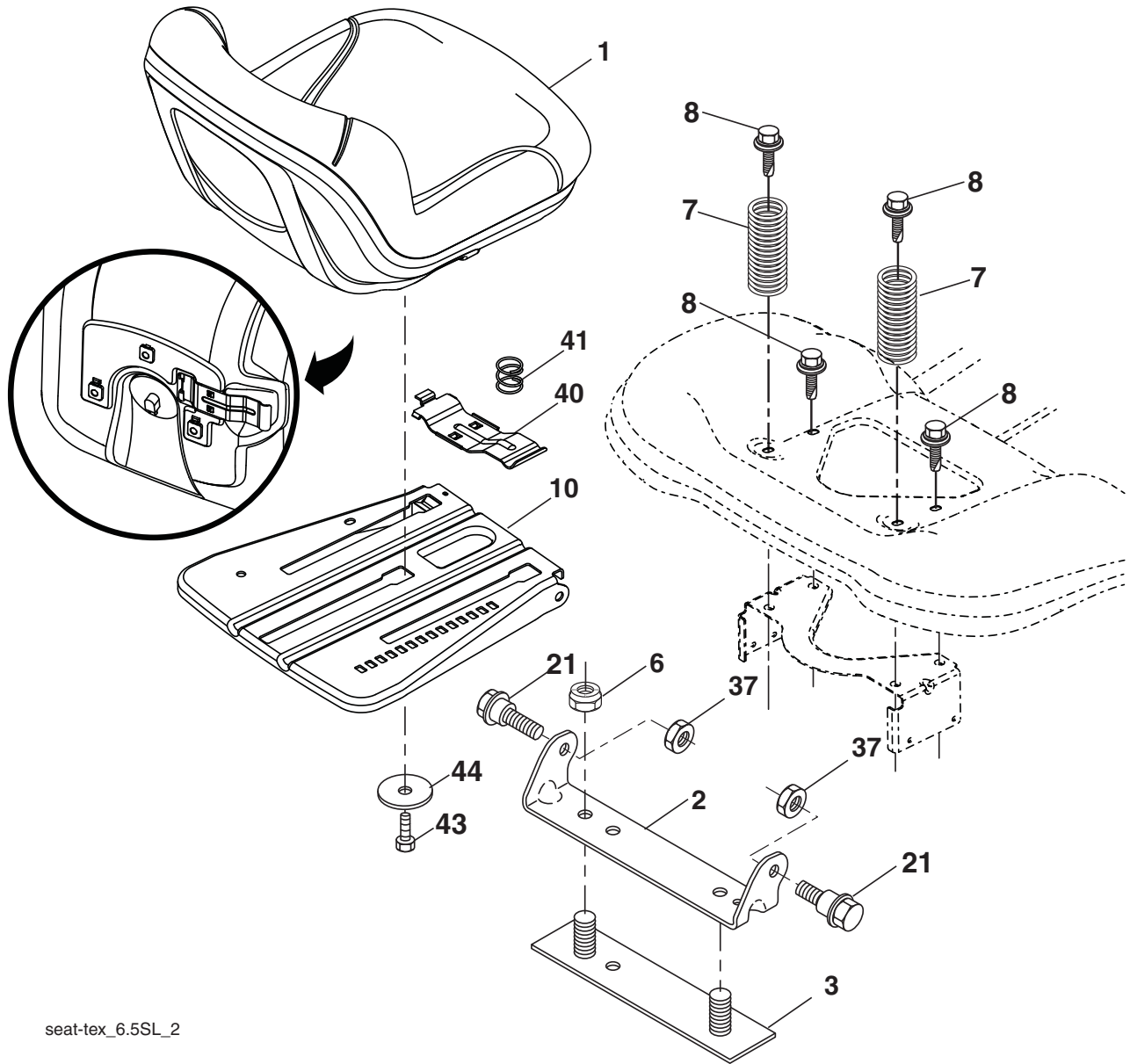


steering-tex_LEGND2_16_r2

KEY NO.	PART NO.	DESCRIPTION	KEY NO.	PART NO.	DESCRIPTION
1	532 41 64-80	Wheel, Steering	51	873 94 08-00	Nut Hex Jam Toplock 1/2-20 unf
2	532 19 59-68	Axle Asm., Front	53	532 18 89-67	WasherHardened.793x1.637x.060
4	532 40 30-87	Spindle Asm., LH	57	532 40 74-65	Bracket Upstop
5	532 40 30-88	Spindle Asm., RH	58	532 19 47-47	Bolt Shoulder Sector Pivot CFM
6	532 12 49-31	Bearing, Race Thrust Harden	59	532 19 47-48	Washer Thrust Sector Steering
7	532 12 17-48	Washer 25/32 x 1-5/8 x 16 Ga.	60	873 97 10-00	Nut Flange Lock 5/8-11
8	812 00 00-29	Ring, Klip #T5304-75	61	532 19 47-40	Draglink LH
9	532 12 12-32	Cap, Spindle	62	532 19 47-41	Draglink, RH
13	532 12 17-49	Washer 25/32 x 1-1/4 x 16 Ga.	63	817 00 05-12	Screw 5/16-18 x 3/4
14	810 04 06-00	Washer, Lock Hvy Hlcl Spr 3/8	64	532 19 98-49	Retainer Clip Spring Steering
15	873 54 06-00	Nut, Crown Lock 3/8-24 unf	66	871 02 07-48	Bolt Hex Fghd 7/16-14 x 3 Serr
16	532 40 82-19	Shaft Steering	67	532 19 47-37	Bushing PM Front Axle
19	532 19 47-29	Plate Steering	68	873 90 07-00	Nut Lock Flange 7/16-14 Gr. 5
21	532 18 67-37	Adapter, Wheel Steering	69	532 19 91-62	Washer 1.5 x .505 x .118
22	532 42 05-37	Support Strg. Lower	70	532 19 61-97	Bracket Deck Susp. Front
26	532 41 59-87	Insert, Wheel Steering			
28	817 00 06-12	Screw 3/8-16 x 3/4			
35	532 19 47-32	Gear, Sector Plate			
45	819 18 38-12	Washer9/16 ID x 2-3/8 OD 12 Ga.			

NOTE: All component dimensions given in U.S. inches
1 inch = 25.4 mm

**TRACTOR - - MODEL NUMBER 917.289543, PRODUCT NO. YTH20K46
SEAT ASSEMBLY**



seat-tex_6.5SL_2

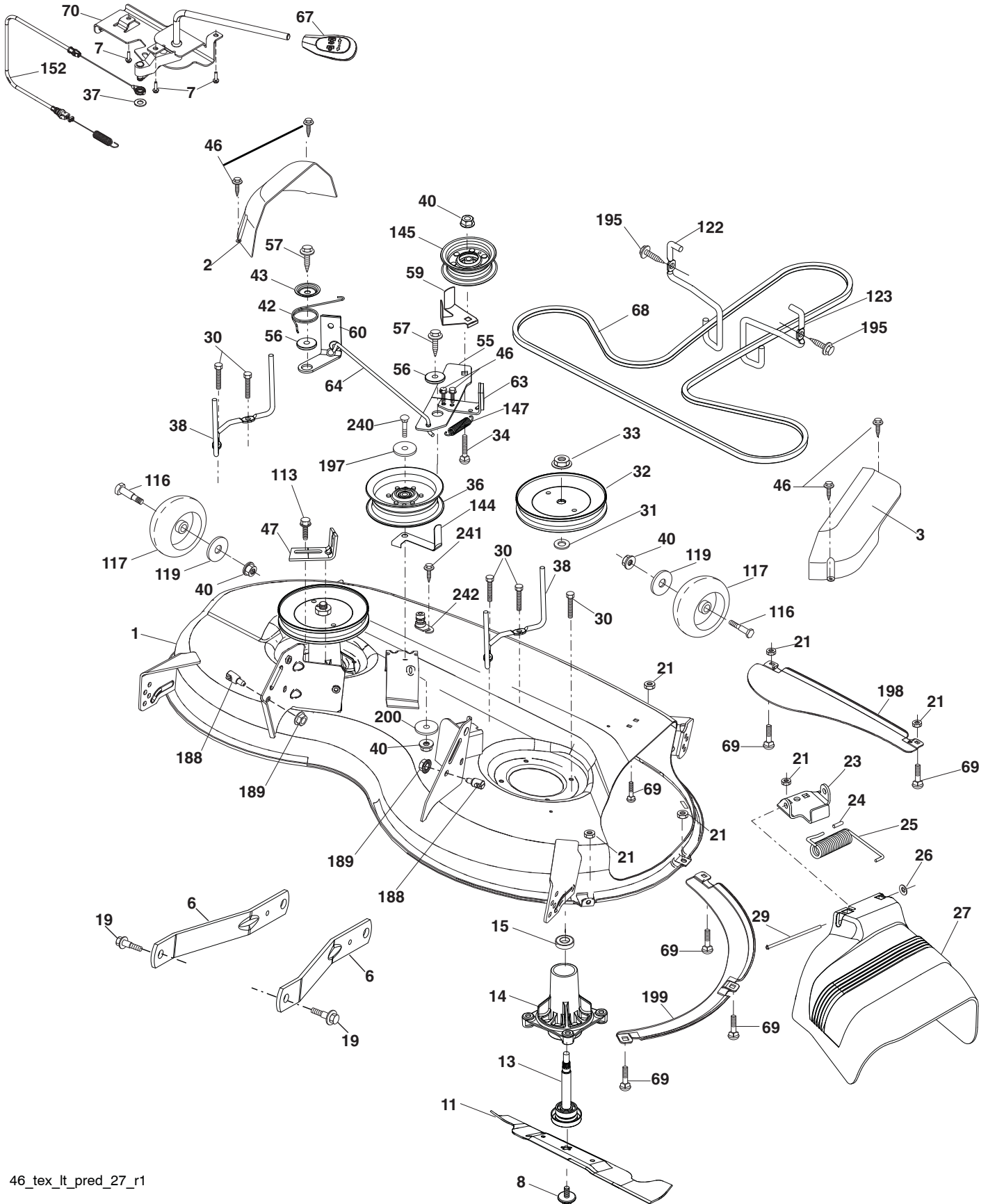
KEY NO.	PART NO.	DESCRIPTION
1	532 42 40-68	Seat
2	532 18 01-66	Bracket Pivot Fender
3	532 14 06-75	Strap, Asm Fender
6	873 80 06-00	Nut, Lock w/Ins. 3/8-16 unc
7	532 12 41-81	Spring, Seat Cprsn
8	532 17 18-77	Bolt 5/16-18 unc x 3/4 w/Sems
10	532 19 69-77	Pan, Seat
21	532 17 18-52	Bolt, Shoulder 5/16-18

KEY NO.	PART NO.	DESCRIPTION
37	873 80 05-00	Nut, Lock 5/16-18 unc
40	532 19 76-61	Handle Slide Seat
41	532 19 82-00	Spring Latch Seat
43	874 76 06-12	Bolt Fin Hex 3/8-16 unc x 3/4
44	819 13 38-12	Washer 13/32 x 2-3/8 x 12 Ga.

NOTE: All component dimensions given in U.S. inches
1 inch = 25.4 mm

TRACTOR -- MODEL NUMBER 917.289543, PRODUCT NO. YTH20K46

MOWER DECK



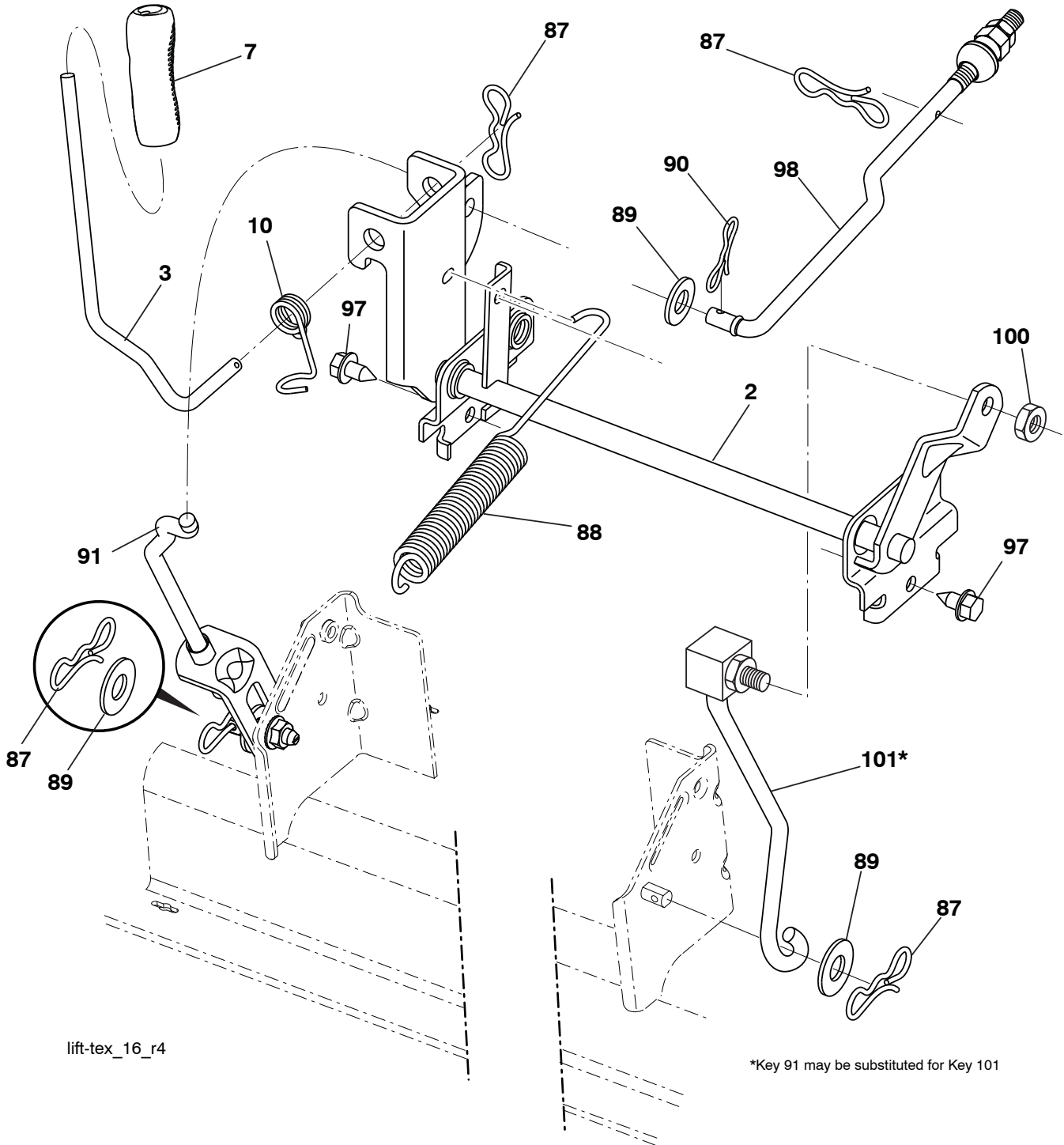
46_tex_lt_pred_27_r1

**TRACTOR - - MODEL NUMBER 917.289543, PRODUCT NO. YTH20K46
MOWER DECK**

KEY PART NO. NO.	DESCRIPTION	KEY PART NO. NO.	DESCRIPTION
1	532 41 08-63	60	532 19 94-71
2	532 40 55-06	63	532 19 94-77
3	532 40 55-07	64	532 40 51-38
6	532 19 51-86	67	532 40 30-12
7	532 41 63-58	68	532 40 51-43
8	532 19 30-03	69	872 14 05-05
11	532 40 53-80	70	532 40 65-63
--	532 40 31-07	113	817 00 05-10
13	532 19 28-72	116	532 19 34-06
14	532 18 72-81	117	532 17 48-73
15	532 11 04-85	119	819 13 20-12
19	532 19 65-39	122	532 19 72-58
21	873 68 05-00	123	532 19 72-59
23	532 19 25-57	144	532 19 92-04
24	532 10 53-04	145	532 19 31-97
25	532 19 70-26	147	532 40 18-72
26	532 11 04-52	152	532 40 83-19
27	532 40 53-57	188	532 19 51-61
29	532 13 14-91	189	873 90 05-00
30	532 17 39-84	195	817 00 06-12
31	532 18 76-90	197	819 13 13-12
32	532 19 74-73	198	532 40 31-49
33	532 40 02-34	199	532 40 31-50
34	872 11 06-12	200	532 41 35-24
36	532 19 73-79	240	874 52 06-36
37	819 13 13-16	241	532 15 29-27
38	532 43 25-20	242	532 41 55-98
40	873 90 06-00	--	532 41 64-05
42	532 19 84-10	--	532 19 28-70
43	532 19 72-56		
46	532 13 77-29		
47	532 19 72-50		
55	532 19 72-49	--	532 43 18-23
56	532 19 90-92		
57	817 00 06-16		
59	532 14 10-43		

NOTE: All component dimensions given in U.S. inches
1 inch = 25.4 mm

**TRACTOR -- MODEL NUMBER 917.289543, PRODUCT NO. YTH20K46
MOWER LIFT**



lift-tex_16_r4

*Key 91 may be substituted for Key 101

KEY NO.	PART NO.	DESCRIPTION
2	532 42 20-27	Shaft Asm., Lift
3	532 19 52-31	Lever Asm., Lift RH
7	532 41 15-55	Grip, Lever
10	532 19 63-14	Spring Torsion
87	532 19 42-09	Pin Cotter 7/16 Bow Tie Lock
88	532 41 07-10	Spring Lift Assist
89	819 19 19-12	Washer Clear Zinc
90	532 19 42-08	Pin Cotter 5/16 Bow Tie Lock
91	532 19 51-81	Link Lift Susp Mower Rear

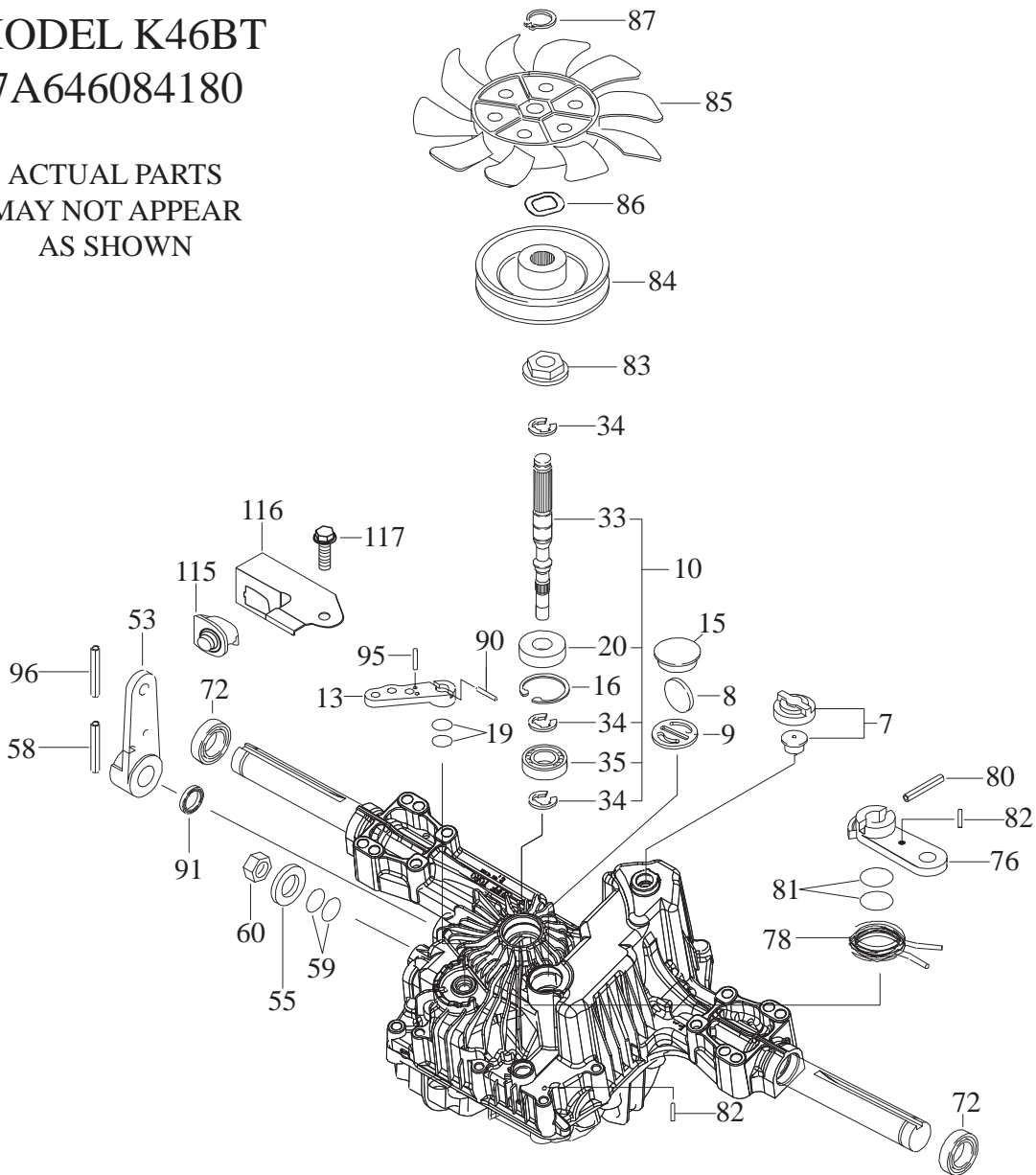
KEY NO.	PART NO.	DESCRIPTION
97	817 00 06-12	Screw 3/8-16 x .75
98	532 19 52-70	Link Lift Susp. Front Mower
100	873 93 06-00	Nut Center Lock 3/8-16 unc
101	532 40 70-03	Link Asm. Lift FXD

NOTE: All component dimensions given in U.S. inches
1 inch = 25.4 mm

**TRACTOR - - MODEL NUMBER 917.289543, PRODUCT NO. YTH20K46
TUFFTORQ TRANSAXLE MODEL NUMBER K46BT**

**MODEL K46BT
7A646084180**

ACTUAL PARTS
MAY NOT APPEAR
AS SHOWN



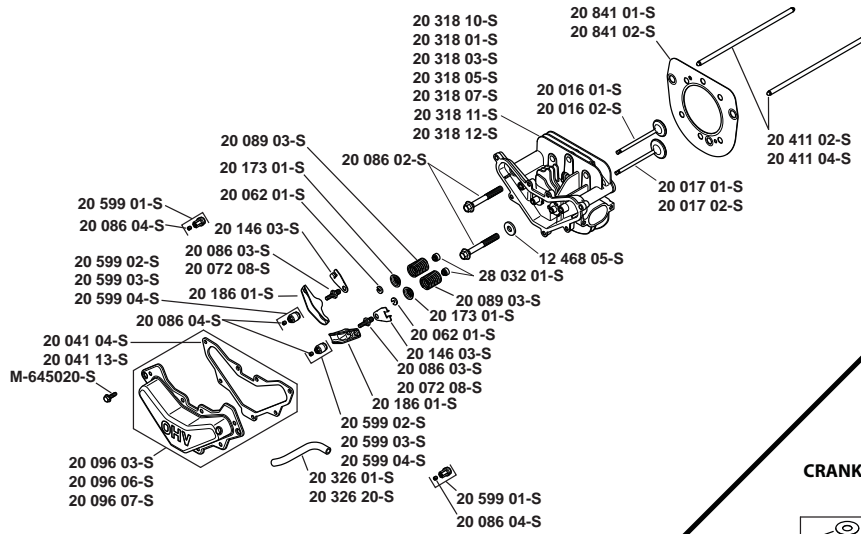
KEY NO.	PART NO.	DESCRIPTION
7	414395	Vent Valve 15
8	414396	Magnet
9	414397	Magnet Holder
10	415923	Pump Shaft/Bearing Kit
13	414398	Bypass Lever
15	414399	Sealing Cap 30
16	414400	Snap Ring C 35
19	414401	O-Ring 1a P10a
20	414402	Seal Tc 153507
33	414403	Pump Shaft (Standard)
34	414404	E-Ring 15
35	414405	Bearing 6202c3
53	414431	Control Lever F
55	415924	Washer 12
58	415925	Roll Pin 6 * 40
59	415926	O-Ring 1a P14
60	415927	Nut 12
72	414407	Seal 19 * 32 * 8
76	414408	Brake Lever

KEY NO.	PART NO.	DESCRIPTION
78	414409	Brake Return Spring
80	414410	Spring Pln 5 * 32
81	414411	O-Ring 1a P12
82	414412	Spring Pin 4 * 16
83	414413	Spine Collar
84	414414	Pulley L
85	414415	Fan, Black
86	414416	Wave Washer
87	414417	Snap Ring
90	414418	Spring Pin 3.0a * 20
91	414419	Oil Seal 16 * 22 *.03
95	414850	Spring Pin 3.0a*16
96	414420	Roll Pin 3.5 * 40
115	415928	Switch 6440-11 Delta
116	415929	Switch Bracket
117	415930	Tapping Screw 8 * 20

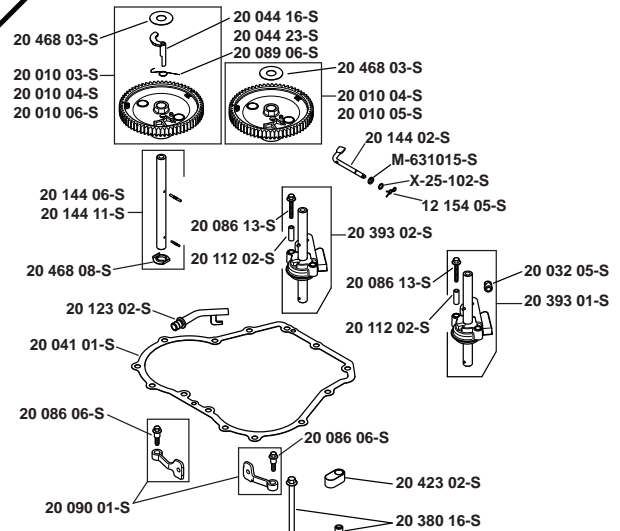
NOTE: All component dimensions given in U.S. inches
1 inch = 25.4 mm

TRACTOR - - MODEL NUMBER 917.289543, PRODUCT NO. YTH20K46
KOHL ENGINE - MODEL NO. SV600-0222

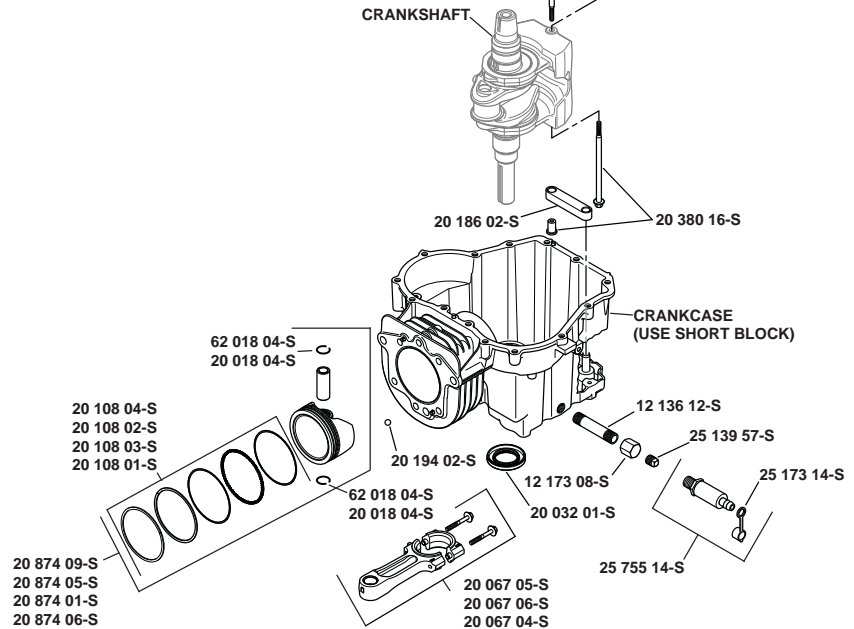
HEAD/VALVE/BREATHER



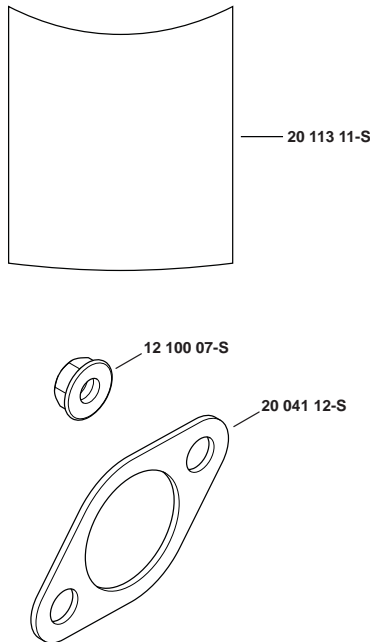
CRANKCASE



CRANKSHAFT

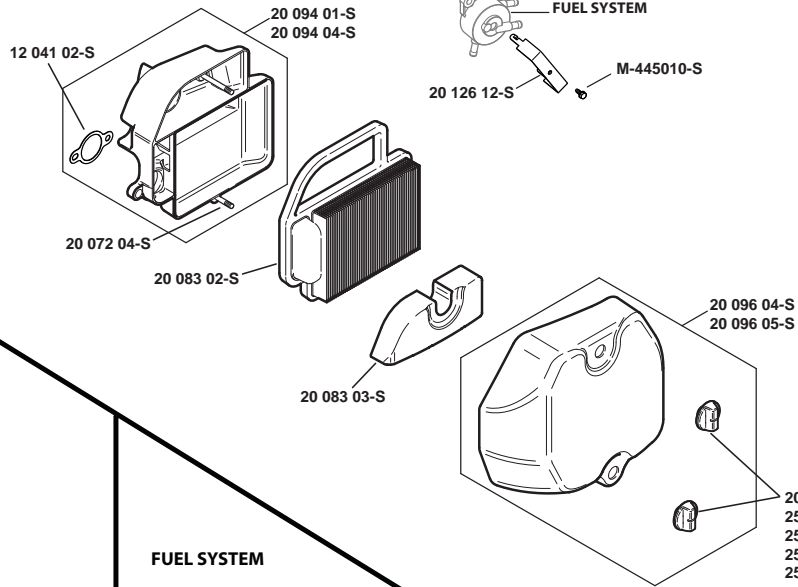


ACCESSORIES

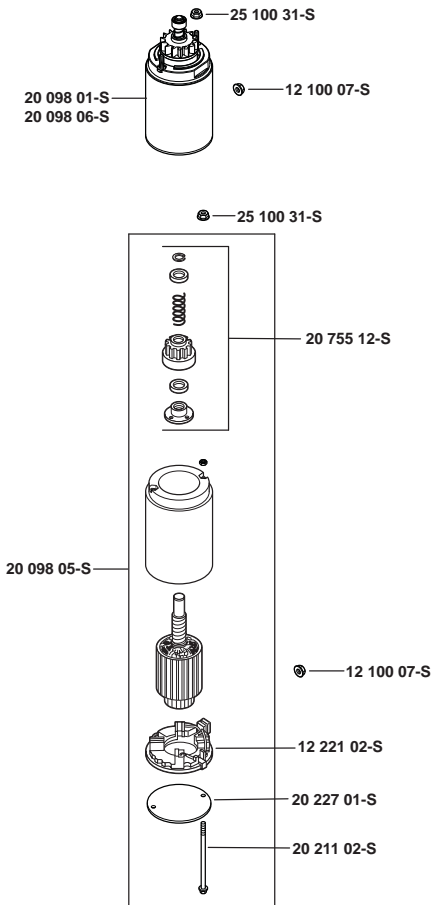


**TRACTOR - - MODEL NUMBER 917.289543, PRODUCT NO. YTH20K46
 KOHL ENGINE - MODEL NO. SV600-0222**

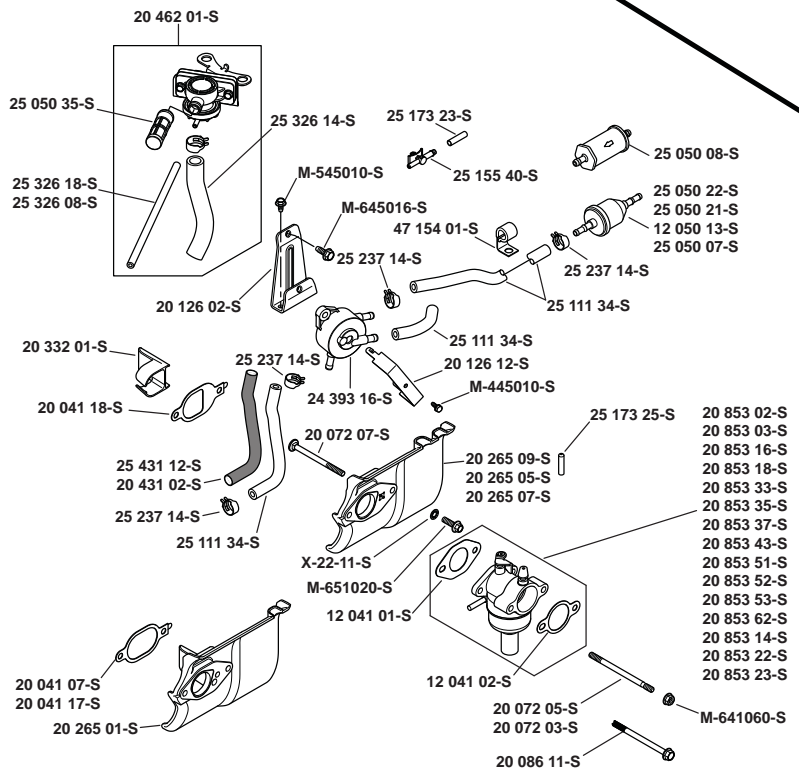
AIR INTAKE/FILTRATION



STARTING SYSTEM



FUEL SYSTEM

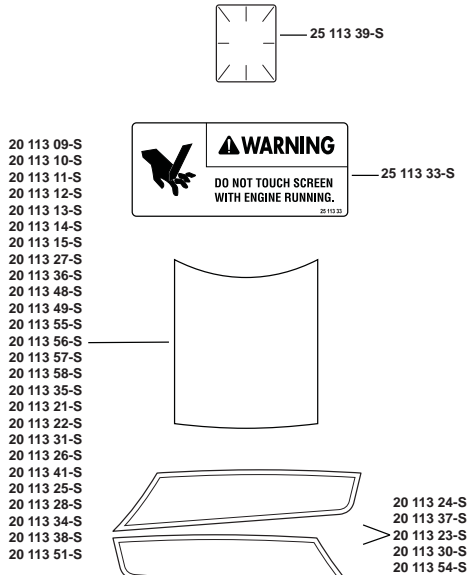


Individual Carburetor Repair Kits are listed by clicking on the notepad under the Carburetor Part Number

TRACTOR - - MODEL NUMBER 917.289543, PRODUCT NO. YTH20K46

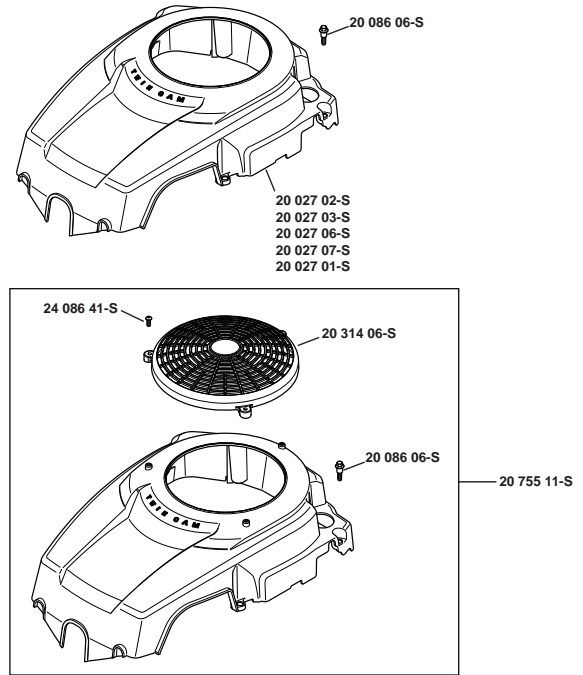
KOHL ENGINE - MODEL NO. SV600-0222

DECALS

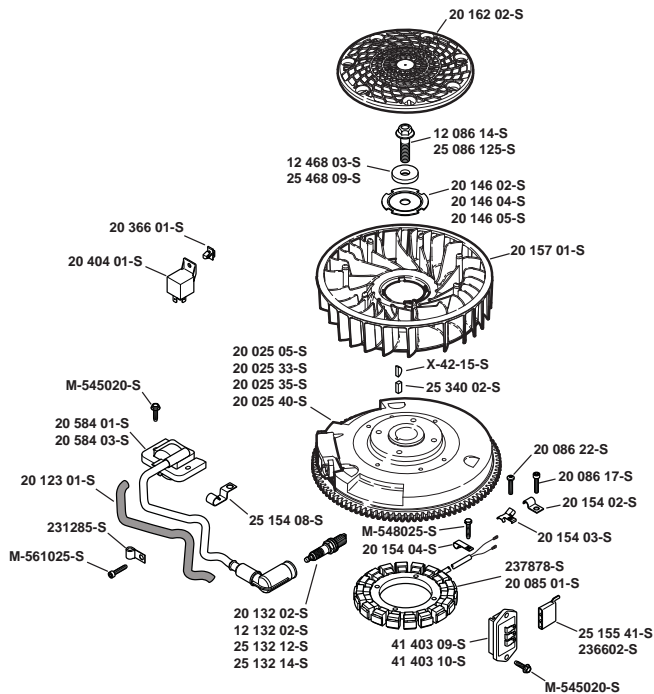


Artwork is representative.
Actual labels may differ depending on model and specification number.

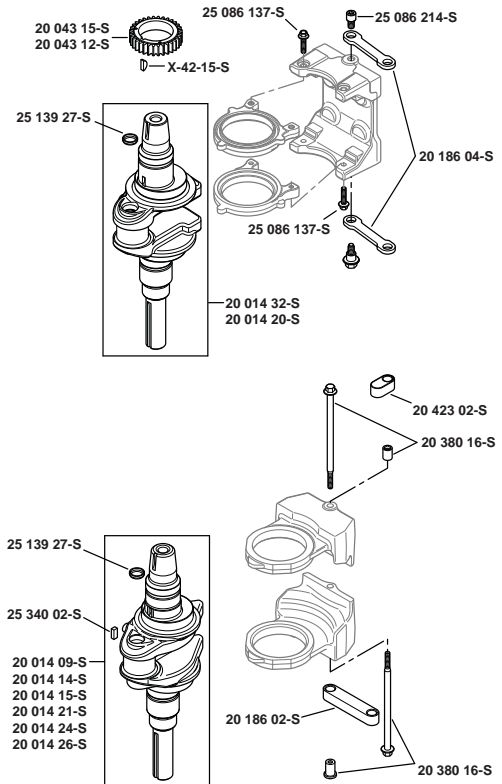
BLOWER HOUSING & BAFFLES



IGNITION/ELECTRICAL

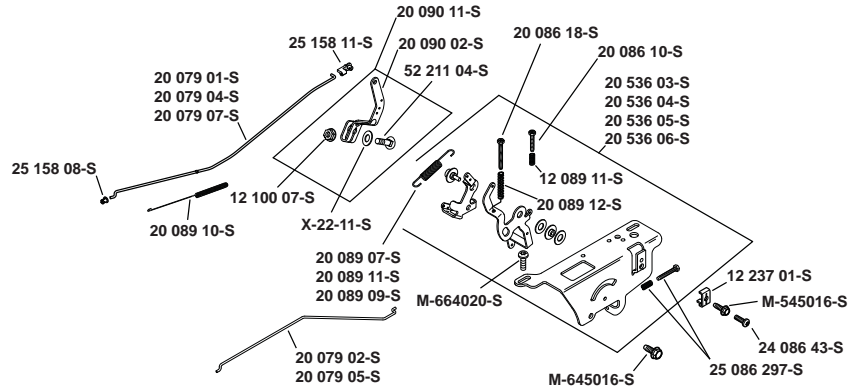


CRANKSHAFT

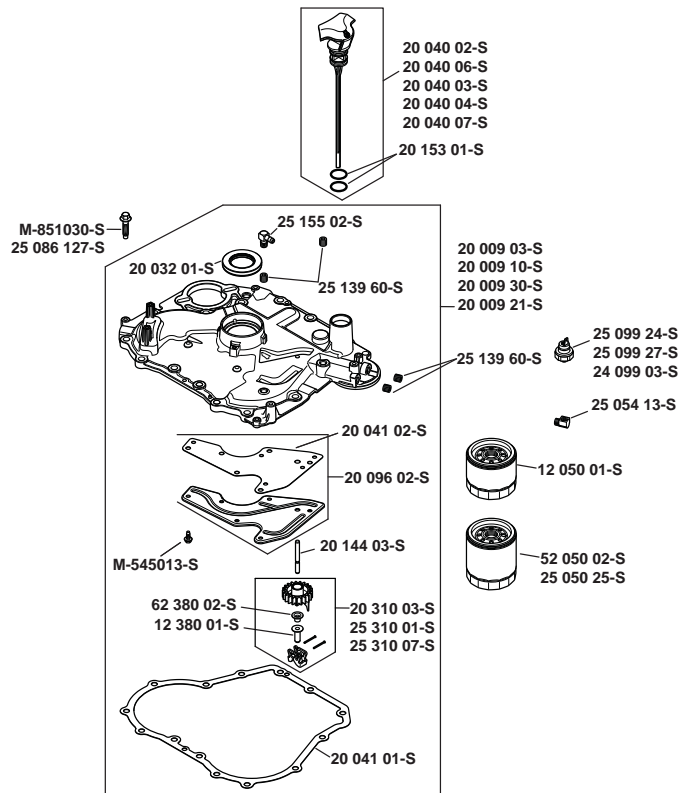


TRACTOR - - MODEL NUMBER 917.289543, PRODUCT NO. YTH20K46
KOHL ENGINE - MODEL NO. SV600-0222

ENGINE CONTROLS



OIL PAN/LUBRICATION



TRACTOR - - MODEL NUMBER 917.289543, PRODUCT NO. YTH20K46
KOHL ENGINE - MODEL NO. SV600-0222

PART NO.	DESCRIPTION	PART NO.	DESCRIPTION
CRANKSHAFT GROUP 1-20-4			YELLOW
20 014 32-S	1 CRANKSHAFT BALANCE ASSY	20 153 01-S	2 O-RING
20 186 04-S	1 LINKAGE, BALANCE WEIGHT	CYLINDER HEAD/BREATHER GROUP 4-20-1	
25 086 213-S	1 SCREW, SHOULDER	12 468 05-S	1 WASHER, FLAT 13/32"
25 086 214-S	1 SCREW, LINK PIVOT	20 841 01-S	1 KIT, CYLINDER HEAD GAS-KET
25 139 27-S	1 PLUG, CUP	20 086 02-S	6 SCREW, FLG M10X1.5X80
20 043 15-S	1 GEAR, CRANKSHAFT	20 318 11-S	1 KIT, CYLINDER HEAD
20 186 04-S	1 LINKAGE, BALANCE WEIGHT	20 016 01-S	1 VALVE, EXHAUST
X-42-15-S	1 KEY, 3/16" X 5/8"	20 017 01-S	1 VALVE, INTAKE
CRANKCASE GROUP 2-20-16		20 062 01-S	2 LOCK, RETAINER
	1 CRANKCASE (USE: SHORT BLOCK)	20 089 03-S	2 SPRING, VALVE
25 139 57-S	1 PLUG, SQ HD PIPE 3/8"	20 173 01-S	2 CAP, VALVE SPRING
20 032 01-S	1 SEAL, OIL	20 072 08-S	2 STUD, ROCKER
20 067 05-S	1 ROD, CONNECTING ASSEMBLY	20 146 03-S	2 PLATE, PUSH ROD GUIDE
20 874 09-S	1 PISTON, RINGS AND PIN ASSEMBLY 94mm BORE	20 186 01-S	2 ARM, ROCKER
62 018 04-S	2 RETAINER, PISTON PIN	20 411 04-S	2 ROD, PUSH
12 154 05-S	1 CLIP, HITCH PIN	20 599 04-S	2 ROCKER PIVOT ASSEMBLY
20 144 02-S	1 SHAFT, GOVERNOR CROSS	20 086 04-S	2 SCREW, SET
M-631015-S	1 WASHER, FLAT 6 MM	20 599 03-S	2 USE 20 599 04-S ROCKER PIVOT KIT
X-25-102-S	1 WASHER, FLAT 1/4"	20 041 13-S	1 GASKET, VALVE COVER
20 393 02-S	1 KIT, OIL PUMP ASSEMBLY	20 096 07-S	1 KIT, VALVE COVER
20 010 04-S	1 KIT, CAMSHAFT ASSEMBLY	M-645020-S	7 SCREW, FLG THD FRM M6X1.0X20
20 044 16-S	1 WEIGHT, ACR	20 326 20-S	1 HOSE, BREATHER
20 086 06-S	2 SCREW, SHD THD FRM M6X1X26	12 041 01-S	1 GASKET, CARBURETOR
20 089 06-S	1 SPRING, ACR	12 041 02-S	1 GASKET, AIR CLEANER BASE
20 090 01-S	2 KIT, CAM LEVER ASSEMBLY	25 086 87-S	2 SCREW, HEX SOCKET HEAD CAP
20 144 11-S	1 KIT,CAM CENTER SHAFT (EXHAUST)	X-21-1-S	2 WASHER, SPRING LOCK 5/16"
20 468 03-S	1 WASHER, THRUST -ACR	20 041 12-S	1 GASKET, EXHAUST
20 468 08-S	1 WASHER, THRUST	20 041 18-S	1 GASKET, HEAT DEFLECTOR
20 123 02-S	1 TUBE, DRAINBACK	20 041 17-S	1 GASKET,HEAT DEFLECTOR
20 041 01-S	1 GASKET, CLOSURE PLATE	IGNITION/CHARGING GROUP 5-20-1	
20 112 02-S	2 SPACER, OIL PUMP SCREW	237878-S	1 KIT, 15 / 20 AMP STATOR
20 086 13-S	2 SCREW, OIL PUMP	M-548025-S	2 SCREW, THD FRM M5X0.8X25
LUBRICATION GROUP 3-20-25		20 025 40-S	1 FLYWHEEL
20 009 30-S	1 CLOSURE PLATE ASSEMBLY	25 086 125-S	1 SCREW, HEX FLANGE
20 032 01-S	1 SEAL, OIL	25 340 02-S	1 KEY, STRAIGHT FLYWHEEL
20 041 01-S	1 GASKET, CLOSURE PLATE	25 468 09-S	1 WASHER, FLAT
25 086 127-S	4 HEX FLANGE SCREW,1/2 DOG POINT	20 584 03-S	1 MODULE, IGNITION (CDI FIXED)
25 139 60-S	1 PLUG, CTSK PIPE 1/8"	M-545020-S	2 SCREW, FLG THD FRM M5X.8X20
25 155 02-S	1 CONNECTOR, 90° HOSE	20 146 05-S	1 PLATE, FAN MOUNTING
12 380 01-S	1 PIN, GOVERNOR REGULATING	20 157 01-S	1 FAN
20 144 03-S	1 SHAFT, GOVERNOR CROSS	20 162 02-S	1 SCREEN, GRASS
25 310 07-S	1 KIT, GOVERNOR GEAR ASSY	12 132 02-S	1 PLUG, SPARK (STD)
20 041 02-S	1 GASKET, OIL PASSAGE	41 403 10-S	1 REGULATOR/RECTIFIER
20 096 02-S	1 KIT, OIL PASSAGE COVER	M-545020-S	2 SCREW, FLG THD FRM M5X.8X20
M-545013-S	6 SCREW, FLG THD FRM M5X0.8X13		
12 050 01-S	1 FILTER, OIL		
20 040 06-S	1 DIPSTICK ASSEMBLY-STD		

TRACTOR - - MODEL NUMBER 917.289543, PRODUCT NO. YTH20K46
KOHL ENGINE - MODEL NO. SV600-0222

PART NO.		DESCRIPTION	PART NO.		DESCRIPTION
20 154 04-S	1	CLIP, WIRE	M-545016-S	1	SCREW, FLG THD FRM M5X0.8X16
20 176 13-S	1	HARNESS, WIRING	20 090 11-S	1	LEVER, GOVERNOR ASSEMBLY
25 155 41-S	1	CONNECTOR	12 100 07-S	1	NUT, FLANGE 1/4-20
25 454 05-S	1	TIE	52 211 04-S	1	BOLT, RD HD SQ NCK 1/4-20X1"
25 452 01-S	2	TERMINAL	X-22-11-S	1	WASHER, INT TOOTH LOCK 1/4"
BLOWER HOUSING GROUP 6-20-5					
20 027 07-S	1	KIT, BLOWER HOUSING	20 079 05-S	1	LINKAGE, CHOKE
20 086 06-S	4	SCREW, SHD THD FRM M6X1X26	20 079 07-S	1	LINKAGE, THROTTLE
41 037 10-S	1	NAMEPLATE, SERVICE	20 089 10-S	1	SPRING, LINKAGE
STARTING GROUP 7-20-1					
20 098 05-S	1	STARTER ASSEMBLY	20 089 11-S	1	SPRING, GOVERNOR
12 100 07-S	1	NUT, FLANGE 1/2-20	25 158 08-S	1	BUSHING, LINKAGE RETAINING
25 100 31-S	2	NUT, FREE SPINNING FLG #10-24	25 158 11-S	1	BUSHING, THROTTLE LINKAGE
20 755 12-S	1	KIT, DRIVE (J.E.)	20 089 12-S	1	SPRING, SPEED CONTROL (LONG)
12 221 02-S	1	BRUSH KIT	20 086 18-S	1	SCREW, PHL THD FRM M4X0.7X38
20 227 01-S	1	CAP, DRIVE END (J.E.)	AIR INTAKE GROUP 10-20-1		
20 211 02-S	1	BOLT, THRU	20 072 04-S	2	STUD, AIR CLEANER BASE
FUEL SYSTEM GROUP 8-20-21					
25 454 05-S	1	TIE	12 041 02-S	1	GASKET, AIR CLEANER BASE
20 853 14-S	1	KIT, CARBURETOR	20 083 02-S	1	ELEMENT, AIR CLEANER
12 041 01-S	1	GASKET, CARBURETOR	20 094 04-S	1	KIT, AIR CLEANER BASE
12 041 02-S	1	GASKET, AIR CLEANER BASE	20 126 12-S	1	BRACKET, FUEL PUMP
20 072 05-S	2	STUD, M6X1.0X100	M-445010-S	1	SCREW, THRD FRM M4X0.7X10
20 265 01-S	1	KIT, HEAT DEFLECTOR	20 096 04-S	1	KIT, AIR CLEANER COVER
20 332 01-S	1	INSERT, INTAKE PORT	25 341 04-S	2	KNOB, COVER
M-641060-S	2	NUT, FLG M6X1.0	IDENTIFICATION GROUP 12-20-1		
M-651020-S	1	SCREW, FLG M6x1.0x20	20 113 14-S	1	DECAL, 20HP
X-22-11-S	1	WASHER, INT TOOTH LOCK 1/4"	25 113 39-S	1	DECAL, CLEAR LAMINATE
24 393 16-S	1	PUMP, FUEL			
25 237 14-S	6	CLAMP, HOSE 1/2"			
25 050 22-S	1	FILTER, FUEL 51 MICRON (FUEL PUMP)			
25 111 34-S	2	LINE, FUEL (24"-CUT TO LENGTH)			
25 431 12-S	1	SLEEVE, FUEL LINE			
20 041 07-S	1	GASKET			
M-545010-S	2	SCREW, FLG THD FRM M5X.8X10			
20 126 02-S	1	BRACKET, FUEL PUMP MOUNTING			
M-645016-S	2	SCREW, FLG THD FRM M6X1.0X16			
ENGINE CONTROLS GROUP 9-20-7					
12 089 11-S	1	SPRING, SPEED CONTROL (SHORT)			
20 086 10-S	1	SCREW, PHL THD FRM M4X0.7X25			
20 536 06-S	1	KIT, SPEED CONTROL ASSEMBLY			
25 086 297-S	1	KIT, IDLE ADJ SCREW & SPRING			
M-664020-S	2	SCREW, LBD SKT M6x1.0x20			
12 237 01-S	1	CLAMP, CABLE			

SERVICE NOTES

SUGGESTED GUIDE FOR SIGHTING SLOPES FOR SAFE OPERATION

