

ILLUSTRATED PARTS LIST

MODEL NUMBER 16530-LS

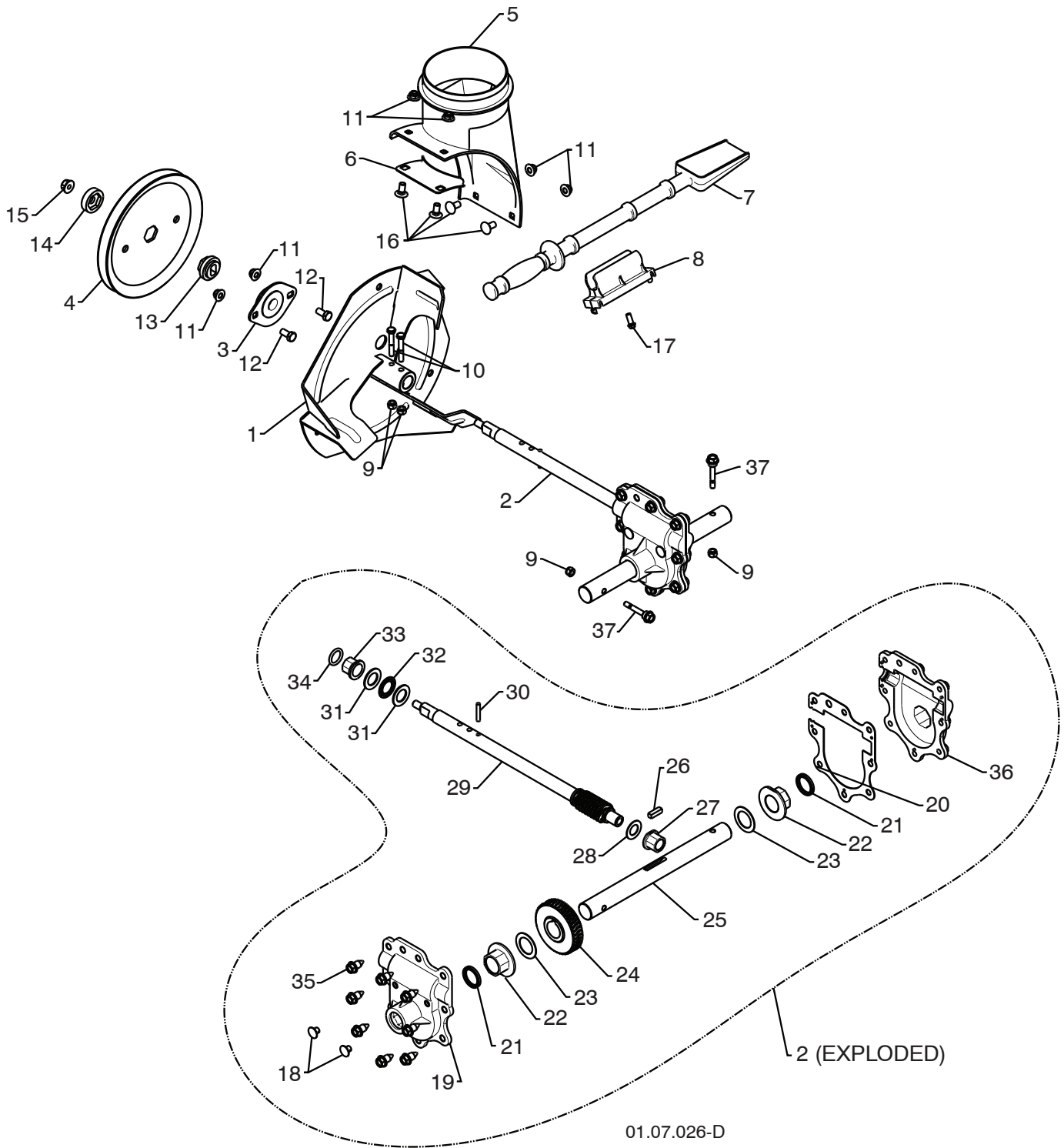
PRODUCT NUMBER 961 93 00-60

MFG. ID. NUMBER 96193006000

REPAIR PARTS

AUGER HOUSING / IMPELLER ASSEMBLY

SNOW THROWER - MODEL NO. 16530-LS (96193006000), PRODUCT NO. 961 93 00-60



NOTE: All component dimensions given in U.S. inches. 1 inch = 25.4 mm
IMPORTANT: Use only Original Equipment Manufacturer (O.E.M.) replacement parts.
Failure to do so could be hazardous, damage your snow thrower and void your warranty.

REPAIR PARTS**AUGER HOUSING / IMPELLER ASSEMBLY****SNOW THROWER - MODEL NO. 16530-LS (96193006000), PRODUCT NO. 961 93 00-60**

| KEY NO. | PART NO. | DESCRIPTION |
|----------------|-----------------|----------------------|
| 1 | 532 43 57-75 | IMPELLER |
| 2 | 532 42 71-48 | GEARBOX ASSEMBLY |
| 3 | 532 18 89-09 | BEARING |
| 4 | 532 42 71-46 | IMPELLER PULLEY |
| 5 | 532 17 53-22 | DISCHARGE BASE |
| 6 | 532 43 62-36 | CORNER BRACKET |
| 7 | 532 19 21-99 | CLEAN OUT TOOL |
| 8 | 532 40 54-00 | TOOL CLIP |
| 9 | 873 80 04-00 | NUT 1/4-20 |
| 10 | 874 78 04-26 | SCREW 1/4-20 X .625 |
| 11 | 532 42 79-42 | NUT 5/16-18 |
| 12 | 532 16 31-83 | SCREW 5/16-18 X .625 |
| 13 | 532 42 71-45 | IMPELLER HUB |
| 14 | 532 42 71-54 | IMPELLER SLEEVE |
| 15 | 873 90 06-00 | NUT 3/8-16 |
| 16 | 532 18 03-55 | CARRIAGE BOLT |
| 17 | 532 19 41-89 | SCREW 13-16 X .625 |
| 18 | 532 40 77-60 | PLUG |
| 19 | 532 42 73-02 | GEARBOX COVER RH |
| 20 | 532 42 73-45 | GASKET |
| 21 | 532 40 77-70 | SEAL |
| 22 | 532 40 77-62 | BEARING |
| 23 | 532 17 46-97 | THRUST WASHER 1.00 |
| 24 | 532 40 77-63 | WORM GEAR |
| 25 | 532 40 77-64 | AUGER SHAFT |
| 26 | 532 18 92-82 | SQUARE KEY |
| 27 | 532 40 77-58 | BEARING |
| 28 | 532 17 46-83 | THRUST WASHER |
| 29 | 532 42 71-47 | IMPELLER SHAFT |
| 30 | 532 18 42-05 | ROLL PIN |
| 31 | 532 17 46-81 | THRUST WASHER |
| 32 | 532 17 46-84 | THRUST BEARING |
| 33 | 532 40 77-69 | BEARING |
| 34 | 532 40 77-68 | O-RING |
| 35 | 532 40 77-67 | SCREW 5/16-18 X .750 |
| 36 | 532 42 73-17 | GEARBOX COVER LH |
| 37 | 532 19 20-90 | SHEAR BOLT |

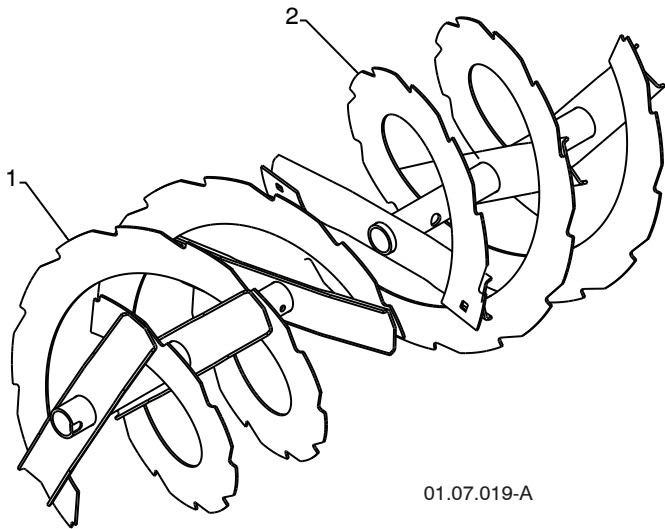
NOTE: All component dimensions given in U.S. inches. 1 inch = 25.4 mm

IMPORTANT: Use only Original Equipment Manufacturer (O.E.M.) replacement parts. Failure to do so could be hazardous, damage your snow thrower and void your warranty.

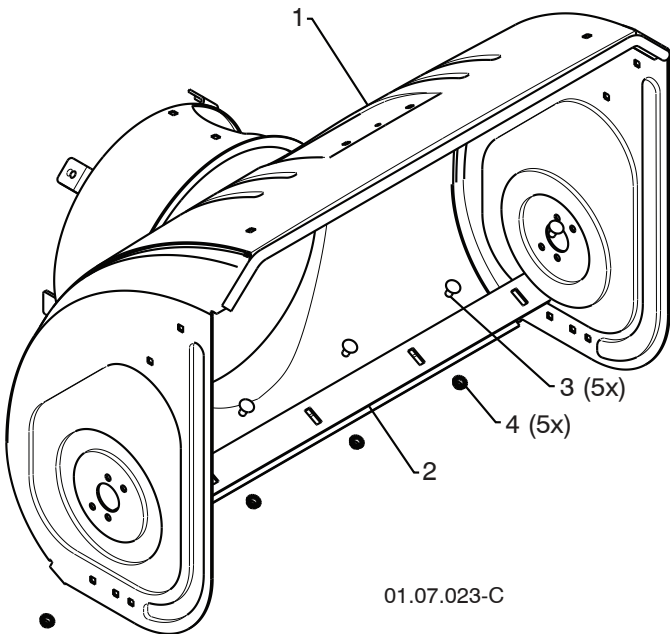
REPAIR PARTS

AUGER HOUSING / IMPELLER ASSEMBLY

SNOW THROWER - MODEL NO. 16530-LS (96193006000), PRODUCT NO. 961 93 00-60



| KEY NO. | PART NO. | DESCRIPTION |
|---------|--------------|----------------------|
| 1 | 532 43 58-59 | AUGER ASSEMBLY 30 LH |
| 2 | 532 43 58-60 | AUGER ASSEMBLY 30 RH |



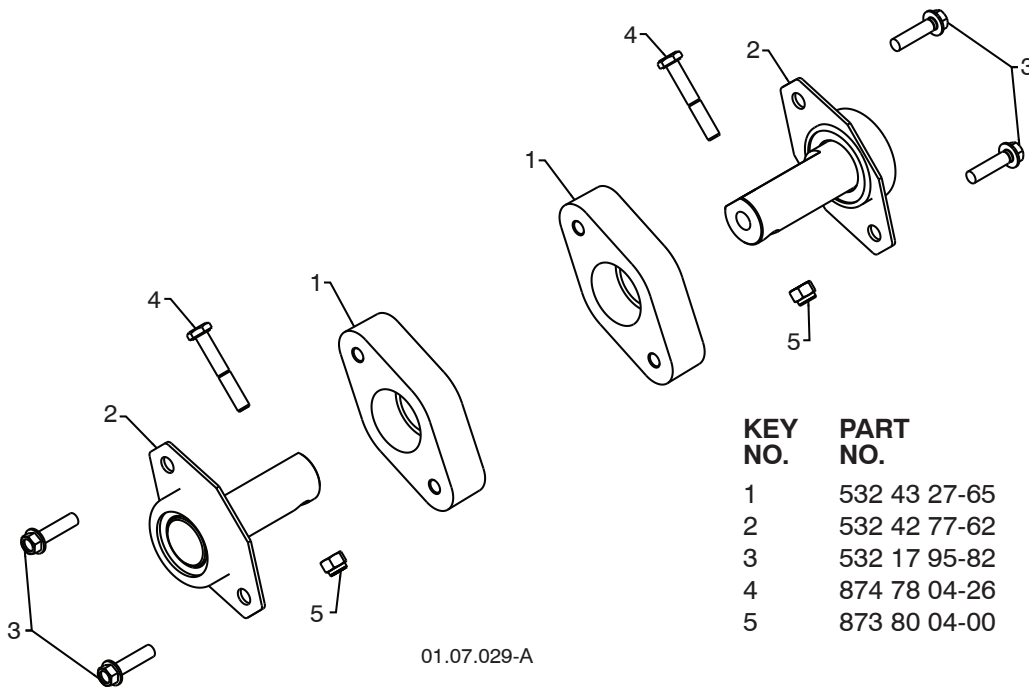
| KEY NO. | PART NO. | DESCRIPTION |
|---------|--------------|------------------------------|
| 1 | 532 42 93-92 | AUGER HOUSING |
| 2 | 532 43 58-30 | SCRAPER BAR |
| 3 | 872 27 05-05 | CARRIAGE BOLT 5/16-18 X .625 |
| 4 | 532 15 53-77 | NUT 5/16-18 |

NOTE: All component dimensions given in U.S. inches. 1 inch = 25.4 mm
IMPORTANT: Use only Original Equipment Manufacturer (O.E.M.) replacement parts. Failure to do so could be hazardous, damage your snow thrower and void your warranty.

REPAIR PARTS

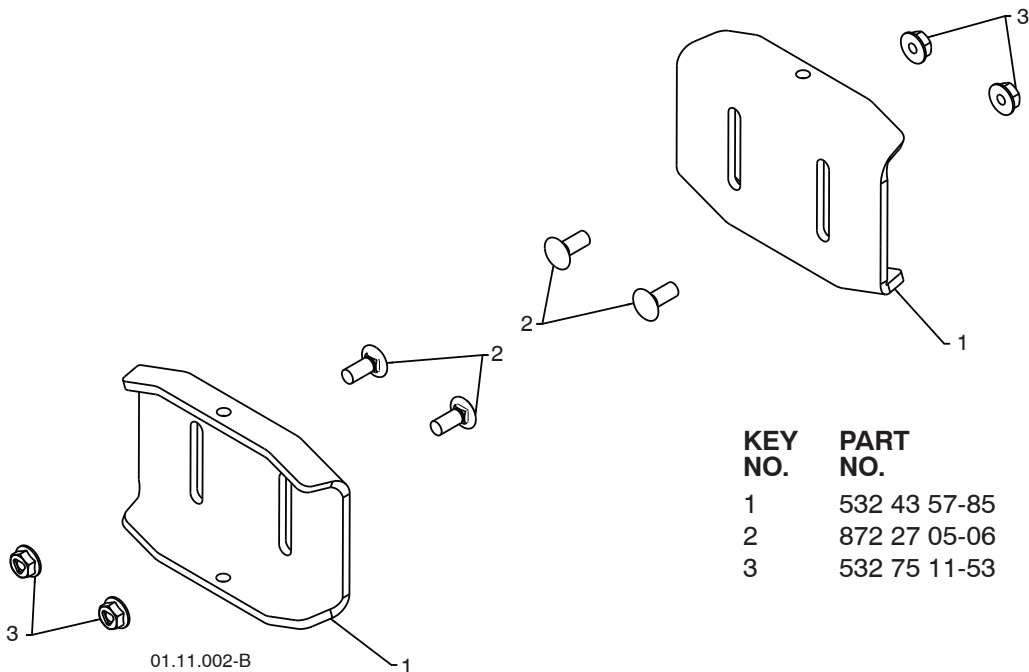
AUGER HOUSING / IMPELLER ASSEMBLY

SNOW THROWER - MODEL NO. 16530-LS (96193006000), PRODUCT NO. 961 93 00-60



01.07.029-A

| KEY NO. | PART NO. | DESCRIPTION |
|---------|--------------|----------------------|
| 1 | 532 43 27-65 | PLASTIC RETAINER |
| 2 | 532 42 77-62 | AUGER BALL BEARING |
| 3 | 532 17 95-82 | SCREW 5/16-18 X 1.00 |
| 4 | 874 78 04-26 | SCREW 1/4-20 X .625 |
| 5 | 873 80 04-00 | NUT 1/4-20 |



01.11.002-B

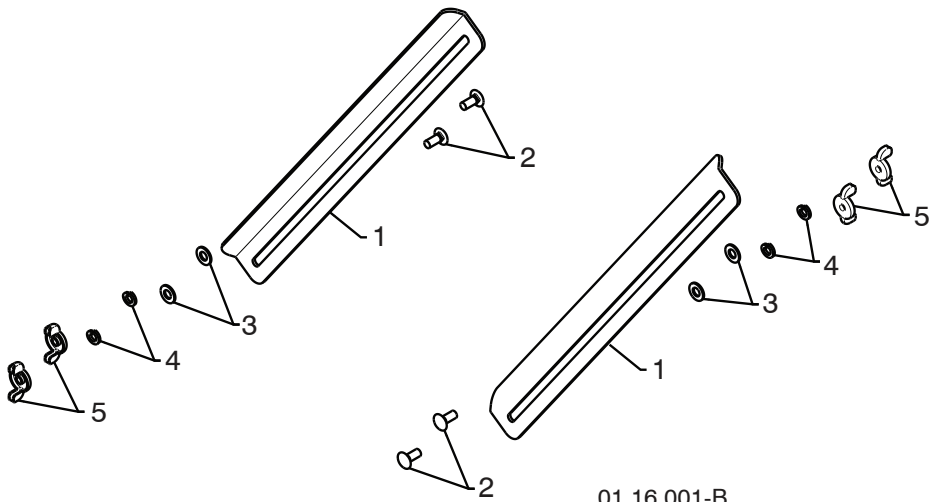
| KEY NO. | PART NO. | DESCRIPTION |
|---------|--------------|------------------------------|
| 1 | 532 43 57-85 | SKID PLATE |
| 2 | 872 27 05-06 | CARRIAGE BOLT 5/16-18 X .750 |
| 3 | 532 75 11-53 | NUT 5/16-18 |

NOTE: All component dimensions given in U.S. inches. 1 inch = 25.4 mm
IMPORTANT: Use only Original Equipment Manufacturer (O.E.M.) replacement parts.
 Failure to do so could be hazardous, damage your snow thrower and void your warranty.

REPAIR PARTS

AUGER HOUSING / IMPELLER ASSEMBLY

SNOW THROWER - MODEL NO. 16530-LS (96193006000), PRODUCT NO. 961 93 00-60



01.16.001-B

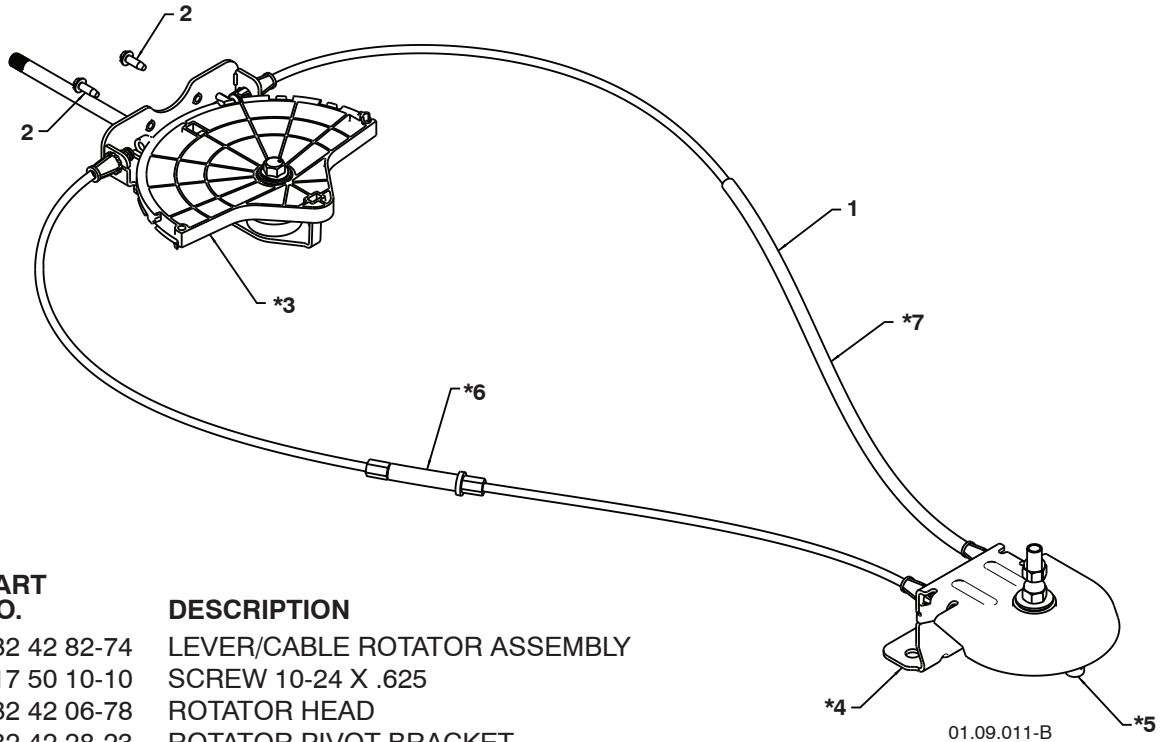
| KEY NO. | PART NO. | DESCRIPTION |
|---------|--------------|--------------------------|
| 1 | 532 43 58-32 | DRIFT CUTTER BAR |
| 2 | 872 27 05-06 | CARRIAGEBOLT5/16-18X.750 |
| 3 | 532 17 92-46 | PLASTIC WASHER |
| 4 | 810 04 05-00 | LOCKWASHER 5/16 |
| 5 | 532 12 86-38 | NUT 5/16-18 |

NOTE: All component dimensions given in U.S. inches. 1 inch = 25.4 mm
IMPORTANT: Use only Original Equipment Manufacturer (O.E.M.) replacement parts.
Failure to do so could be hazardous, damage your snow thrower and void your warranty.

REPAIR PARTS

CONTROL PANEL / DISCHARGE CHUTE

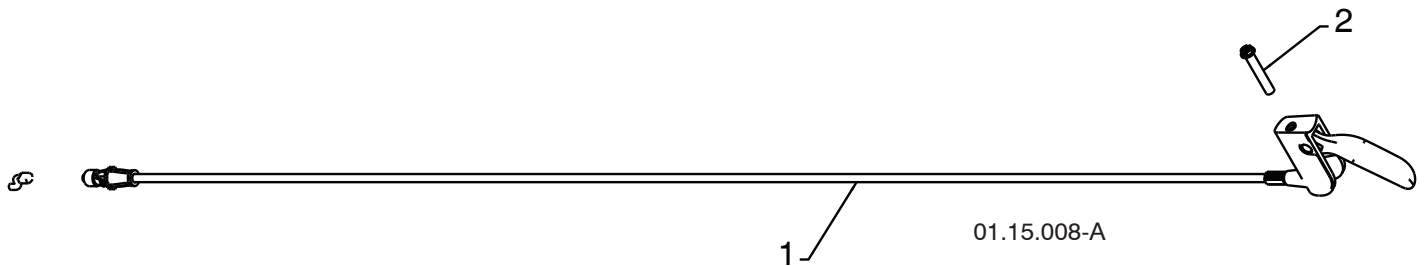
SNOW THROWER - MODEL NO. 16530-LS (96193006000), PRODUCT NO. 961 93 00-60



| KEY NO. | PART NO. | DESCRIPTION |
|---------|--------------|------------------------------|
| 1 | 532 42 82-74 | LEVER/CABLE ROTATOR ASSEMBLY |
| 2 | 817 50 10-10 | SCREW 10-24 X .625 |
| *3 | 532 42 06-78 | ROTATOR HEAD |
| *4 | 532 42 28-23 | ROTATOR PIVOT BRACKET |
| *5 | 532 42 06-75 | PULLEY PIVOT |
| *6 | 532 42 82-75 | CABLE ASSEMBLY ADJUSTABLE |
| *7 | 532 42 83-11 | CABLE ASSEMBLY HEAT SHIELD |

NOTES:

1. ITEMS INDICATED WITH AN * ARE LISTED AS REFERENCE FOR SERVICE PARTS ONLY.



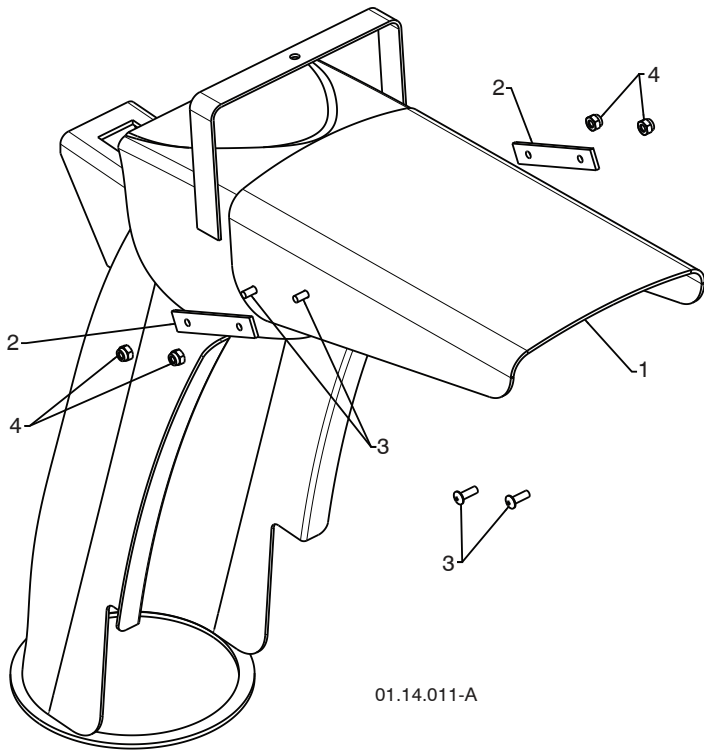
| KEY NO. | PART NO. | DESCRIPTION |
|---------|--------------|--------------------|
| 1 | 532 42 12-31 | STEER CABLE |
| 2 | 874 04 10-24 | SCREW 10-24 X 1.50 |

NOTE: All component dimensions given in U.S. inches. 1 inch = 25.4 mm
IMPORTANT: Use only Original Equipment Manufacturer (O.E.M.) replacement parts.
 Failure to do so could be hazardous, damage your snow thrower and void your warranty.

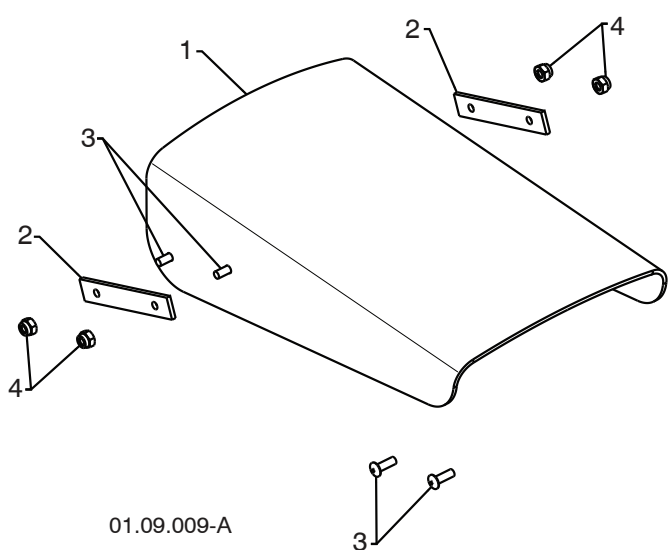
REPAIR PARTS

CONTROL PANEL / DISCHARGE CHUTE

SNOW THROWER - MODEL NO. 16530-LS (96193006000), PRODUCT NO. 961 93 00-60



| KEY NO. | PART NO. | DESCRIPTION |
|---------|--------------|------------------|
| 1 | 532 42 11-38 | SHIELD DEFLECTOR |
| 2 | 532 42 11-39 | STRAP |
| 3 | 532 18 22-27 | SCREW 8-32 X .50 |
| 4 | 532 18 22-28 | NUT 8-32 |



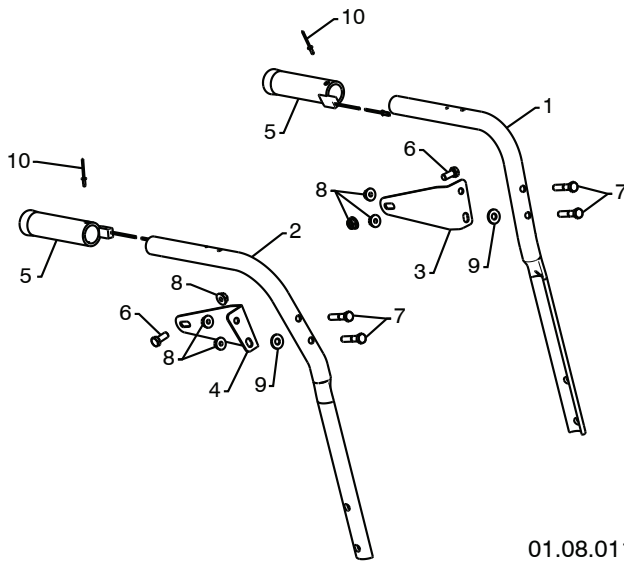
| KEY NO. | PART NO. | DESCRIPTION |
|---------|--------------|------------------|
| 1 | 532 42 11-38 | SHIELD DEFLECTOR |
| 2 | 532 43 58-31 | STRAP |
| 3 | 532 18 22-27 | SCREW 8-32 X .50 |
| 4 | 532 18 22-28 | NUT 8-32 |

NOTE: All component dimensions given in U.S. inches. 1 inch = 25.4 mm
IMPORTANT: Use only Original Equipment Manufacturer (O.E.M.) replacement parts.
 Failure to do so could be hazardous, damage your snow thrower and void your warranty.

REPAIR PARTS

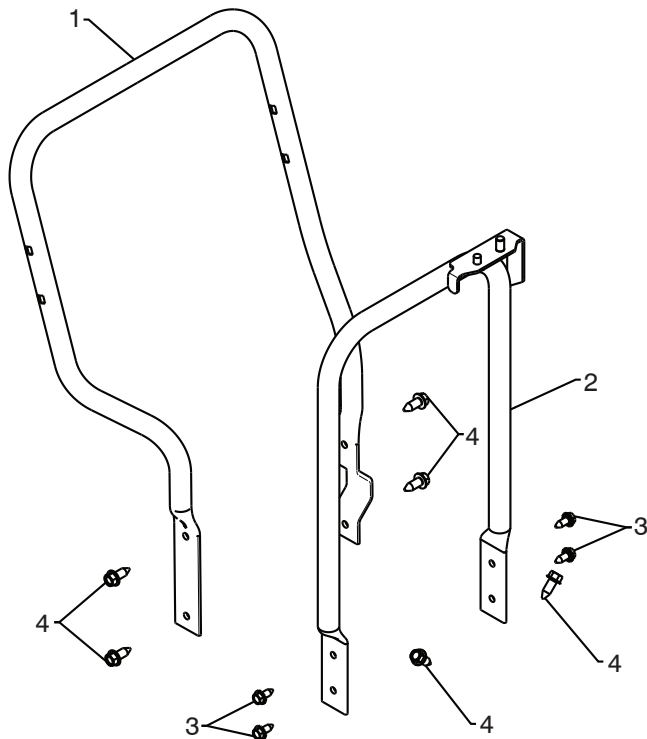
HANDLES

SNOW THROWER - MODEL NO. 16530-LS (96193006000), PRODUCT NO. 961 93 00-60



01.08.011-A

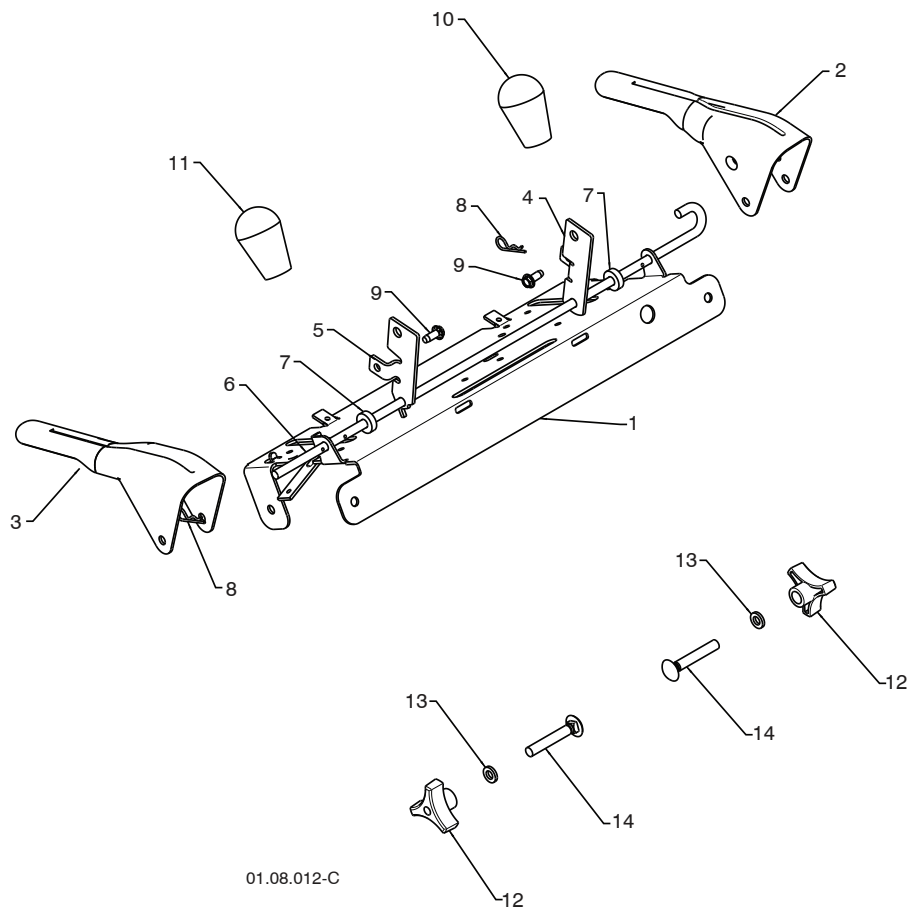
| KEY NO. | PART NO. | DESCRIPTION |
|---------|--------------|----------------------|
| 1 | 532 42 17-08 | PLOW HANDLE LH |
| 2 | 532 42 17-09 | PLOW HANDLE RH |
| 3 | 532 43 62-73 | PANEL BRACKET LH |
| 4 | 532 43 62-72 | PANEL BRACKET RH |
| 5 | 532 41 45-15 | HEATED HANDLE GRIP |
| 6 | 874 78 05-12 | SCREW 5/16-18 X .750 |
| 7 | 874 78 05-24 | SCREW 5/16-18 X 1.50 |
| 8 | 532 75 11-53 | NUT 5/16-18 |
| 9 | 532 15 54-15 | WASHER |
| 10 | 532 17 87-75 | POP RIVET 1/8 |



01.05.006-C

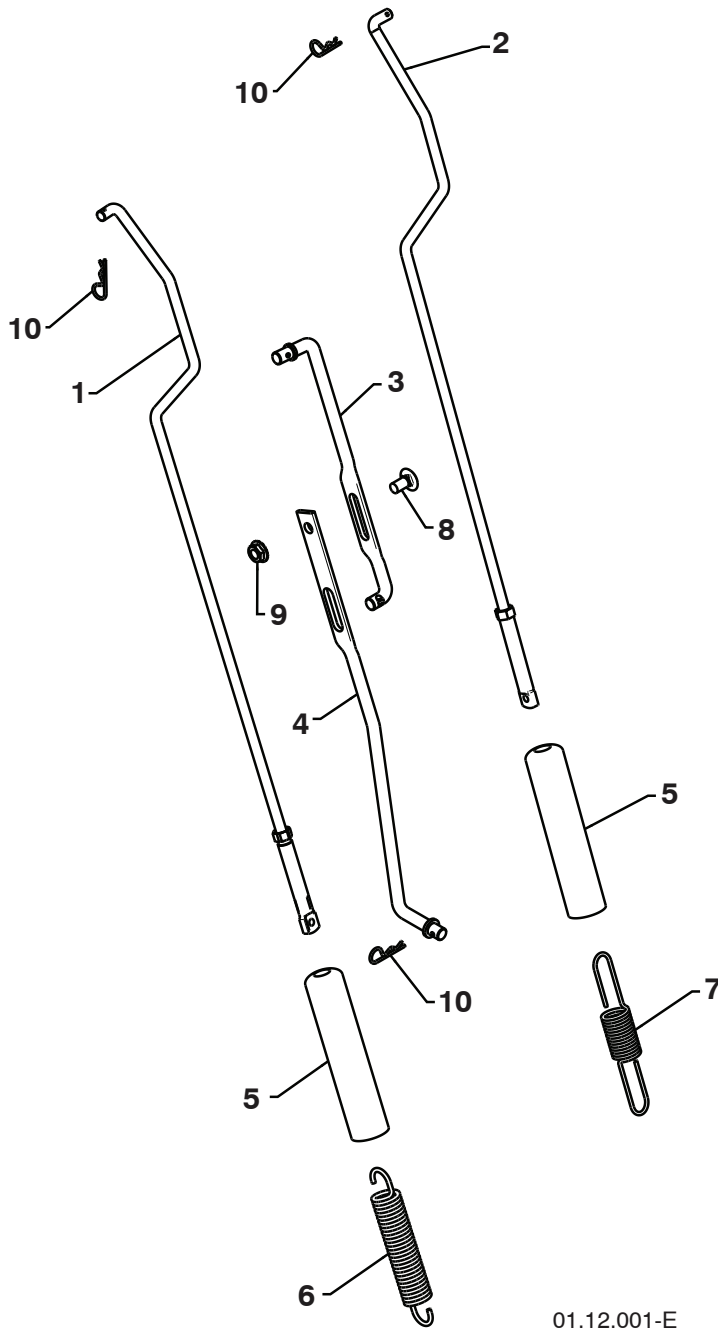
| KEY NO. | PART NO. | DESCRIPTION |
|---------|--------------|---------------------|
| 1 | 532 42 17-05 | LOWER TUBE GRAY |
| 2 | 532 43 61-41 | PIVOT SUPPORT |
| 3 | 532 42 88-67 | BOLT 5/16-18 X .750 |
| 4 | 817 00 06-16 | SCREW 3/8-16 X 1.00 |

NOTE: All component dimensions given in U.S. inches. 1 inch = 25.4 mm
IMPORTANT: Use only Original Equipment Manufacturer (O.E.M.) replacement parts.
 Failure to do so could be hazardous, damage your snow thrower and void your warranty.



| KEY NO. | PART NO. | DESCRIPTION |
|---------|--------------|-----------------------------|
| 1 | 532 43 58-04 | CONTROL PANEL |
| 2 | 532 42 91-50 | CONTROL LEVER LH |
| 3 | 532 42 91-51 | CONTROL LEVER RH |
| 4 | 532 41 55-46 | TRACTION ROD ARM |
| 5 | 532 42 90-98 | IMPELLER ROD ARM |
| 6 | 532 41 26-77 | INTERLOCK ROD |
| 7 | 532 42 16-13 | SPACER |
| 8 | 532 16 96-75 | RETAINER |
| 9 | 817 06 04-10 | SCREW 1/4-20 X .62 |
| 10 | 532 41 42-80 | KNOB BLACK |
| 11 | 532 41 42-81 | KNOB RED |
| 12 | 532 17 88-99 | HANDLE KNOB |
| 13 | 819 13 13-16 | WASHER 3/8 |
| 14 | 872 12 06-18 | CARRIAGE BOLT 3/8-16 X 2.25 |

NOTE: All component dimensions given in U.S. inches. 1 inch = 25.4 mm
IMPORTANT: Use only Original Equipment Manufacturer (O.E.M.) replacement parts.
 Failure to do so could be hazardous, damage your snow thrower and void your warranty.



| KEY NO. | PART NO. | DESCRIPTION |
|---------|--------------|-----------------------------|
| 1 | 532 18 04-80 | IMPELLER ROD ASSEMBLY |
| 2 | 532 40 57-40 | TRACTION ROD ASSEMBLY |
| 3 | 532 18 04-45 | SHIFTER ROD TOP |
| 4 | 532 18 77-16 | SHIFTER ROD BOTTOM |
| 5 | 532 18 04-47 | SPRING SLEEVE |
| 6 | 532 17 86-69 | IMPELLER SPRING |
| 7 | 532 18 09-26 | TRACTION SPRING |
| 8 | 872 27 05-05 | CARRIAGE BOLT 5/16-18 X .75 |
| 9 | 532 15 53-77 | NUT 5/16-18 |
| 10 | 532 16 96-75 | RETAINER |

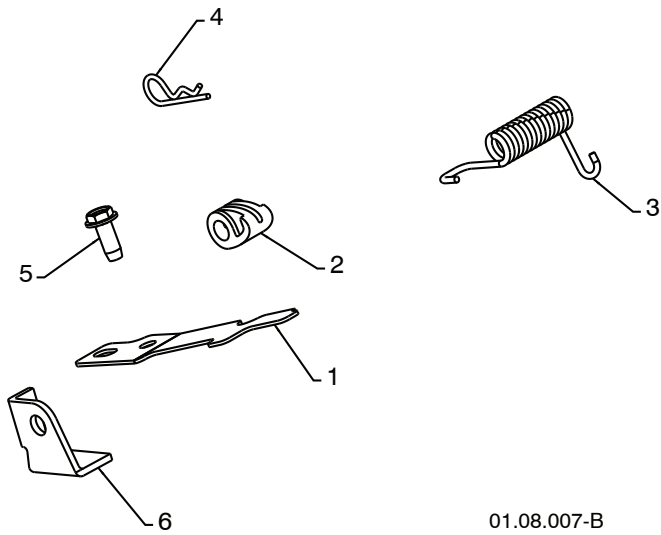
01.12.001-E

NOTE: All component dimensions given in U.S. inches. 1 inch = 25.4 mm
IMPORTANT: Use only Original Equipment Manufacturer (O.E.M.) replacement parts.
 Failure to do so could be hazardous, damage your snow thrower and void your warranty.

REPAIR PARTS

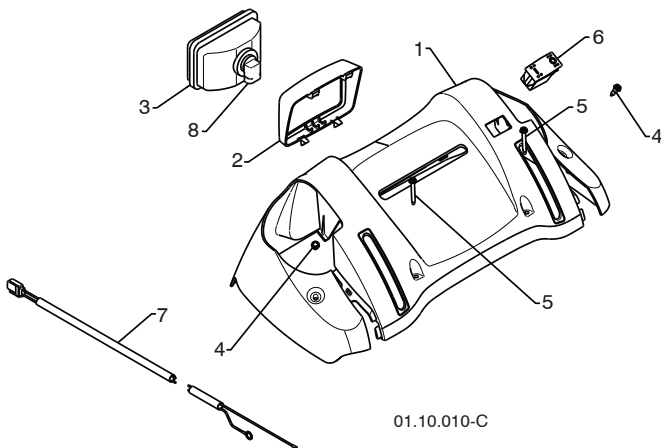
HANDLES

SNOW THROWER - MODEL NO. 16530-LS (96193006000), PRODUCT NO. 961 93 00-60



01.08.007-B

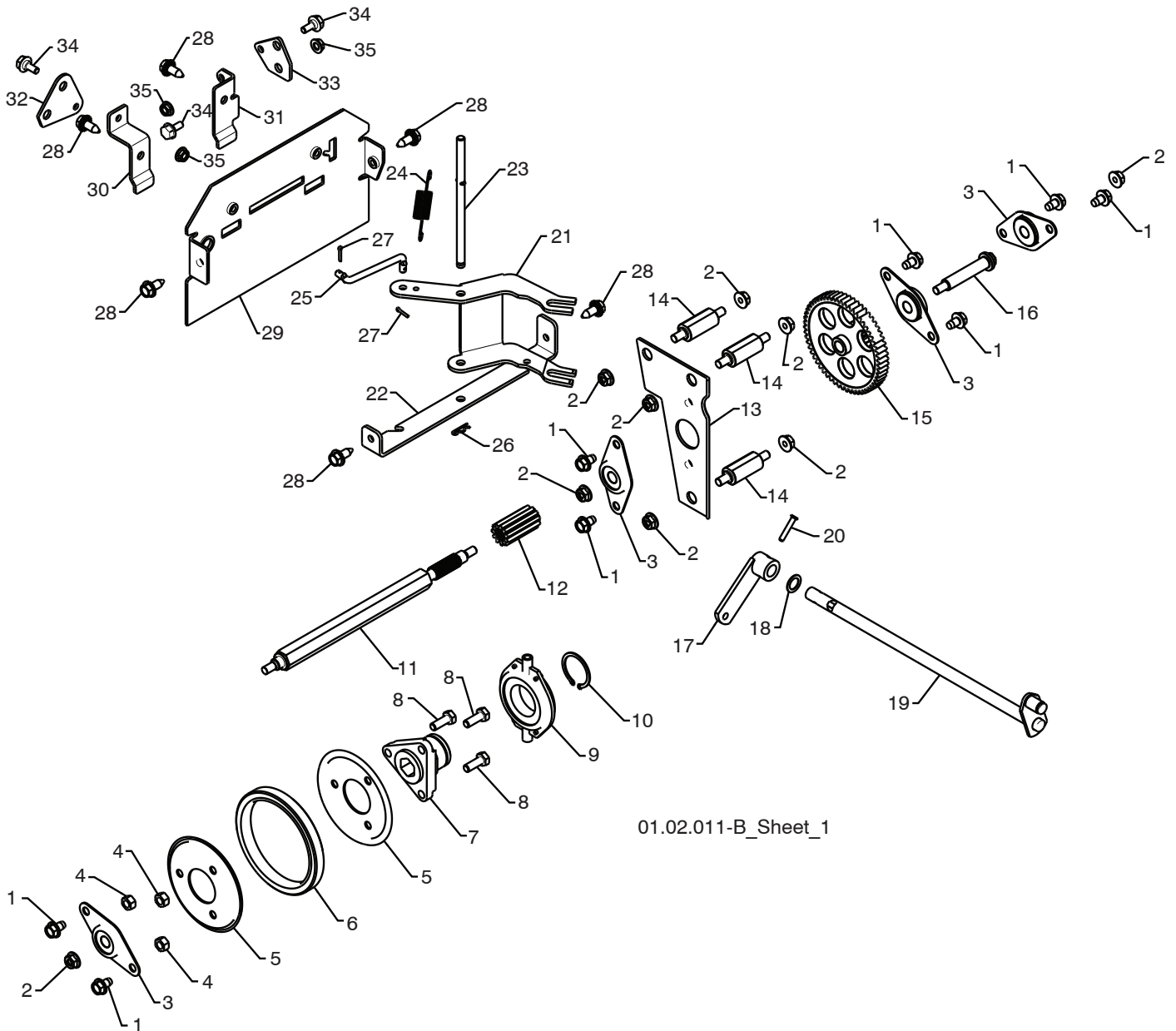
| KEY NO. | PART NO. | DESCRIPTION |
|---------|--------------|---------------------|
| 1 | 532 43 58-06 | INTERLOCK SPRING |
| 2 | 532 41 45-72 | INTERLOCK CAM |
| 3 | 532 17 88-31 | TORSION SPRING |
| 4 | 532 16 96-75 | RETAINER |
| 5 | 817 06 04-10 | SCREW 1/4-20 X .625 |
| 6 | 532 43 58-05 | INTERLOCK STOP |



01.10.010-C

| KEY NO. | PART NO. | DESCRIPTION |
|---------|--------------|-----------------------------|
| 1 | 532 42 13-51 | CONSOLE PANEL GRAY |
| 2 | 532 42 14-48 | HEADLIGHT BEZEL GRAY |
| 3 | 532 17 86-66 | HALOGEN HEADLIGHT |
| 4 | 532 18 44-71 | SHOULDER SCREW 10-24 X .625 |
| 5 | 532 17 52-62 | SCREW 10-24 X 1.25 |
| 6 | 532 41 77-60 | GRIP SWITCH |
| 7 | 532 40 56-99 | WIRE HARNESS |
| 8 | 532 40 16-20 | BULB |

NOTE: All component dimensions given in U.S. inches. 1 inch = 25.4 mm
IMPORTANT: Use only Original Equipment Manufacturer (O.E.M.) replacement parts.
 Failure to do so could be hazardous, damage your snow thrower and void your warranty.



01.02.011-B_Sheet_1

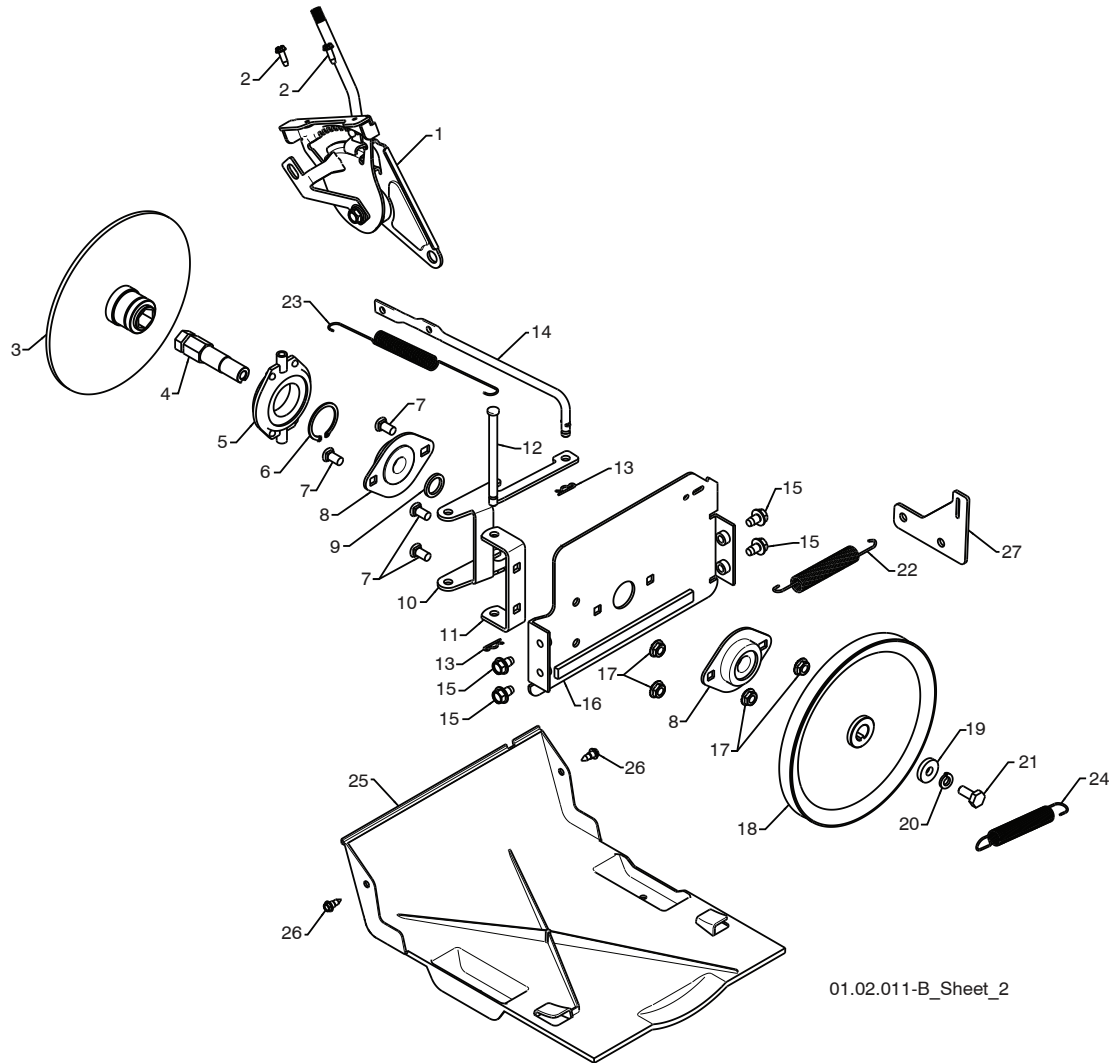
NOTE: All component dimensions given in U.S. inches. 1 inch = 25.4 mm
IMPORTANT: Use only Original Equipment Manufacturer (O.E.M.) replacement parts.
 Failure to do so could be hazardous, damage your snow thrower and void your warranty.

SNOW THROWER - MODEL NO. 16530-LS (96193006000), PRODUCT NO. 961 93 00-60

| KEY NO. | PART NO. | DESCRIPTION |
|---------|--------------|-----------------------------|
| 1 | 817 49 05-08 | BOLT 5/16-18 X .500 |
| 2 | 532 75 11-53 | NUT 5/16-18 |
| 3 | 532 18 00-17 | FLANGE BEARING |
| 4 | 873 93 05-00 | NUT 5/16-18 |
| 5 | 532 43 57-89 | RUBBER WHEEL PLATE |
| 6 | 532 17 98-31 | RUBBER WHEEL RING |
| 7 | 532 17 86-13 | RUBBER WHEEL HUB |
| 8 | 874 76 05-14 | BOLT 5/16-18 X .875 |
| 9 | 532 17 53-44 | TRUNNION BEARING ASSEMBLY |
| 10 | 812 00 00-12 | RETAINER |
| 11 | 532 18 00-66 | HEX SHAFT |
| 12 | 532 18 00-65 | PINION GEAR |
| 13 | 532 43 57-90 | AUXILIARY PLATE |
| 14 | 532 17 92-70 | SPACER PLATE |
| 15 | 532 18 00-82 | INTERMEDIATE GEAR |
| 16 | 532 18 01-34 | AUXILIARY SHAFT |
| 17 | 532 40 54-85 | CONTROL ARM |
| 18 | 532 05 70-79 | WASHER |
| 19 | 532 42 75-42 | CONTROL SHAFT ASSEMBLY |
| 20 | 532 19 85-80 | CLEVIS PIN |
| 21 | 532 43 57-92 | SHIFTER LEVER |
| 22 | 532 43 57-93 | PIVOT BRACKET |
| 23 | 532 17 88-07 | PIVOT PIN |
| 24 | 532 18 01-35 | SPRING |
| 25 | 532 18 71-01 | SHIFTER LINK |
| 26 | 532 08 51-79 | RETAINER |
| 27 | 532 70 02-79 | CLIP |
| 28 | 532 42 88-67 | SCREW 5/16-18 x .750 |
| 29 | 532 41 69-21 | REAR PLATE |
| 30 | 532 43 57-97 | SHIFTER PLATE BRACKET |
| 31 | 532 43 57-96 | CLUTCH PLATE BRACKET |
| 32 | 532 43 58-00 | SHIFTER PLATE |
| 33 | 532 43 57-99 | CLUTCH PLATE |
| 34 | 532 40 28-81 | SHOULDER BOLT 1/4-20 X .500 |
| 35 | 532 19 17-30 | NUT 1/4-20 |

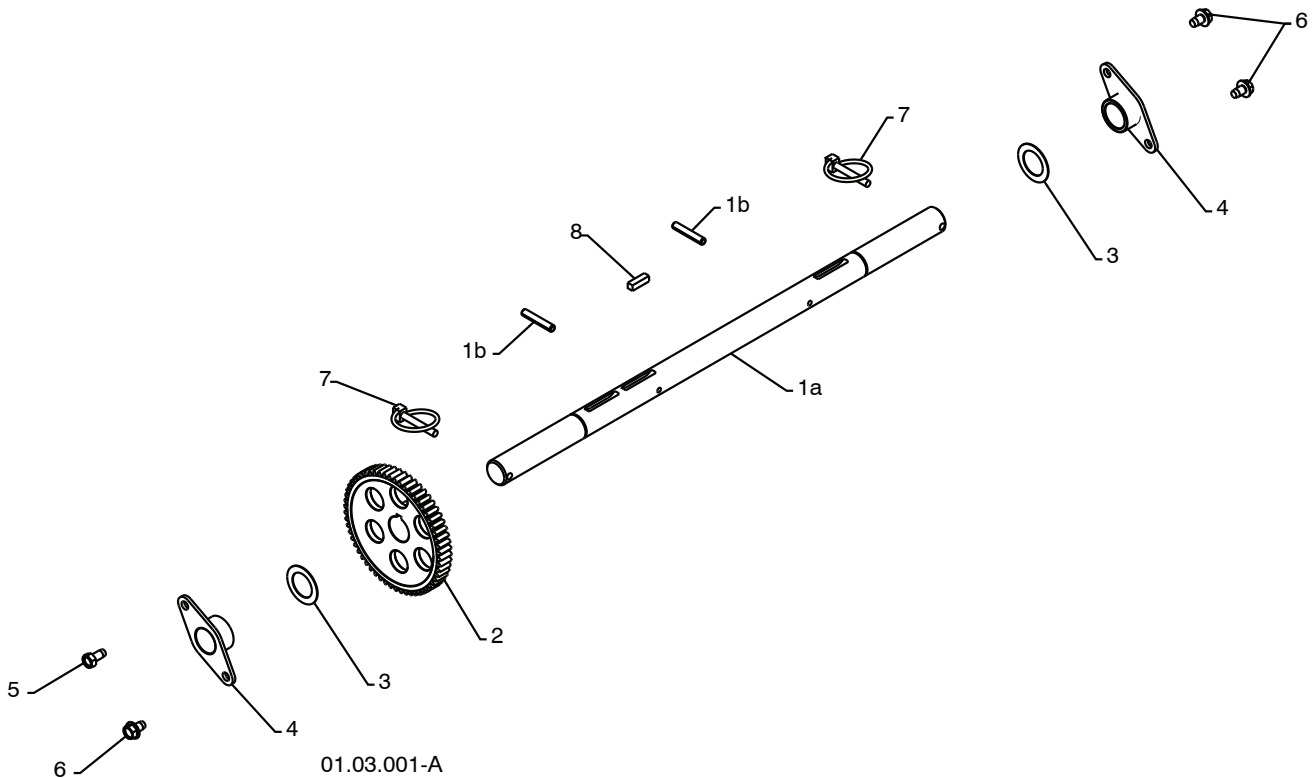
NOTE: All component dimensions given in U.S. inches. 1 inch = 25.4 mm

IMPORTANT: Use only Original Equipment Manufacturer (O.E.M.) replacement parts. Failure to do so could be hazardous, damage your snow thrower and void your warranty.



| KEY NO. | PART NO. | DESCRIPTION | KEY NO. | PART NO. | DESCRIPTION |
|---------|--------------|------------------------------|---------|--------------|-------------------------|
| 1 | 532 19 88-75 | SPEED SELECTOR HEAD ASSEMBLY | 14 | 532 40 33-00 | CLUTCH ROD |
| 2 | 817 50 10-10 | SCREW 10-24 X .625 | 15 | 817 49 05-08 | BOLT 5/16-18 X .500 |
| 3 | 532 19 77-63 | DRIVE PLATE WELDMENT | 16 | 532 43 57-83 | DRIVE MOUNT PLATE |
| 4 | 532 19 77-64 | HEX SHAFT | 17 | 532 15 53-77 | NUT 5/16-18 |
| 5 | 532 17 53-44 | TRUNNION BEARING ASSEMBLY | 18 | 532 19 10-80 | TRACTION PULLEY |
| 6 | 812 00 00-12 | RETAINER | 19 | 819 11 15-07 | WASHER |
| 7 | 872 27 05-05 | CARRIAGE BOLT 5/16-18 X .625 | 20 | 810 04 05-00 | LOCKWASHER 5/16 |
| 8 | 532 18 89-09 | FLANGE BEARING | 21 | 874 95 05-12 | SCREW 5/16-18 X .750 |
| 9 | 532 18 25-04 | SPACER | 22 | 532 41 45-57 | TRACTION SPRING |
| 10 | 532 43 57-87 | LEVER SHIFTER PLATE | 23 | 532 17 90-95 | RETURN SPRING |
| 11 | 532 43 57-84 | SHIFTER SUPPORT BRACKET | 24 | 532 17 88-28 | BRAKE SPRING |
| 12 | 532 17 86-95 | PIN | 25 | 532 41 08-77 | BOTTOM PAN |
| 13 | 532 08 51-79 | RETAINER | 26 | 532 18 44-71 | SCREW 10-24 X .625 |
| | | | 27 | 532 43 57-72 | TRACTION SPRING BRACKET |

NOTE: All component dimensions given in U.S. inches. 1 inch = 25.4 mm
IMPORTANT: Use only Original Equipment Manufacturer (O.E.M.) replacement parts. Failure to do so could be hazardous, damage your snow thrower and void your warranty.



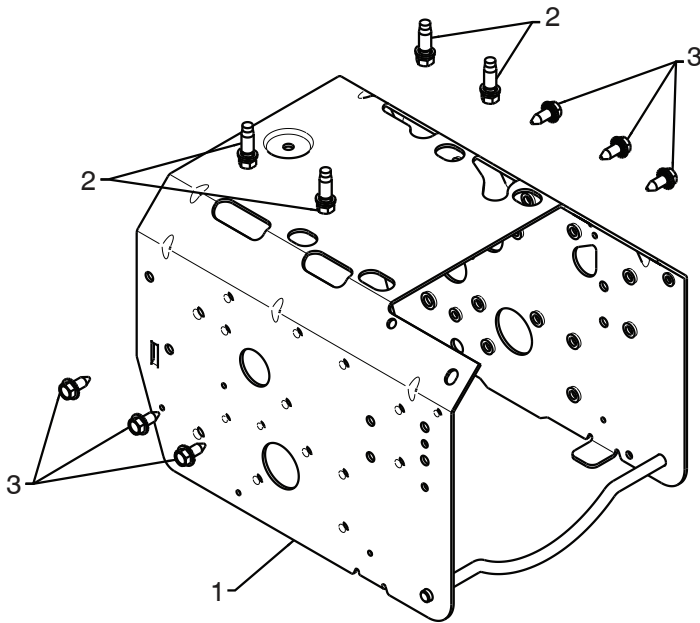
| KEY NO. | PART NO. | DESCRIPTION |
|---------|--------------|-------------------------------|
| 1 | 532 40 49-23 | (assy of 1a,1b) AXLE ASSEMBLY |
| 1a | 532 40 43-07 | AXLE SHAFT |
| 1b | 532 18 42-06 | ROLL PIN 3/16 |
| 2 | 532 18 00-81 | GEAR |
| 3 | 532 17 46-97 | THRUST WASHER |
| 4 | 532 17 98-30 | AXLE BEARING |
| 5 | 532 14 63-15 | SCREW 5/16-18 X .625 |
| 6 | 817 49 05-08 | BOLT 5/16-18 X .500 |
| 7 | 532 15 54-43 | CLIK PIN |
| 8 | 532 18 92-82 | SQUARE KEY |

NOTE: All component dimensions given in U.S. inches. 1 inch = 25.4 mm
IMPORTANT: Use only Original Equipment Manufacturer (O.E.M.) replacement parts.
 Failure to do so could be hazardous, damage your snow thrower and void your warranty.

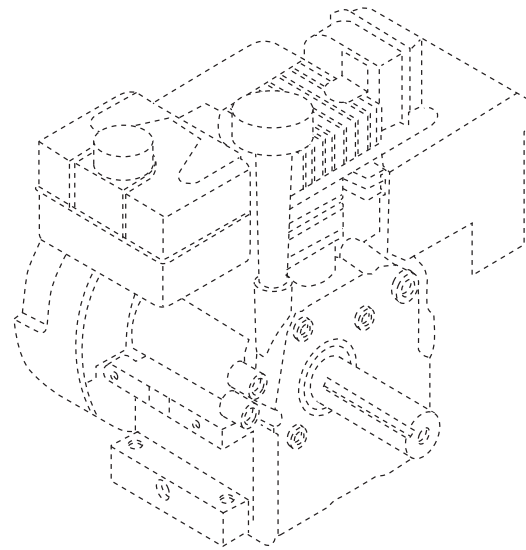
REPAIR PARTS

CHASSIS / ENGINE / PULLEYS

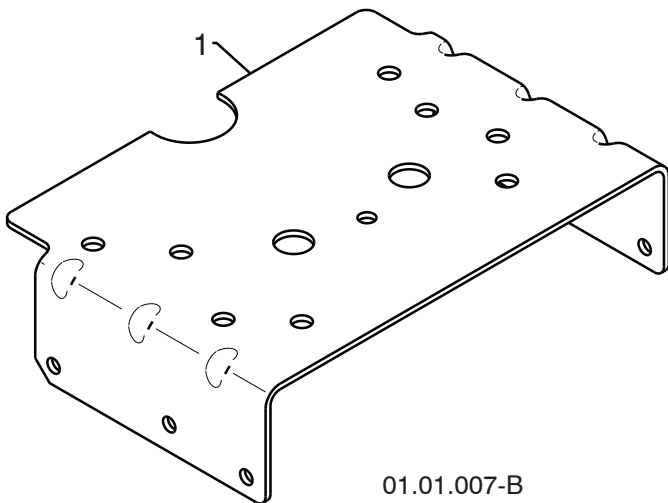
SNOW THROWER - MODEL NO. 16530-LS (96193006000), PRODUCT NO. 961 93 00-60



01.00.033-A



| KEY NO. | PART NO. | DESCRIPTION |
|---------|--------------|------------------------------------|
| -- | ----- | B&S ENGINE MODEL 21M314-1483-E2 |
| 1 | 532 42 92-03 | FRAME |
| 2 | 532 15 04-06 | BOLT 3/8-16 |
| 3 | 532 42 88-67 | SCREW 5/16-18 X .750 |



01.01.007-B

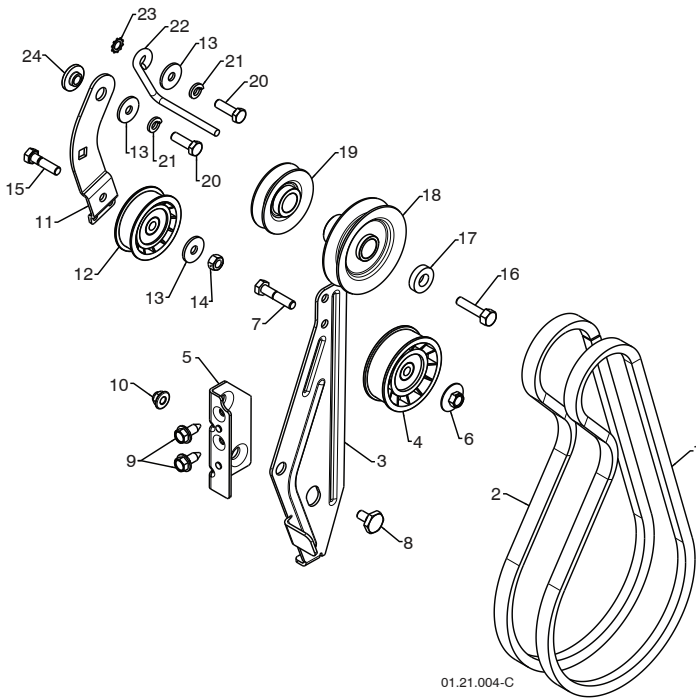
| KEY NO. | PART NO. | DESCRIPTION |
|---------|--------------|--------------------|
| 1 | 532 43 63-11 | ENGINE MOUNT PLATE |

NOTE: All component dimensions given in U.S. inches. 1 inch = 25.4 mm
IMPORTANT: Use only Original Equipment Manufacturer (O.E.M.) replacement parts.
 Failure to do so could be hazardous, damage your snow thrower and void your warranty.

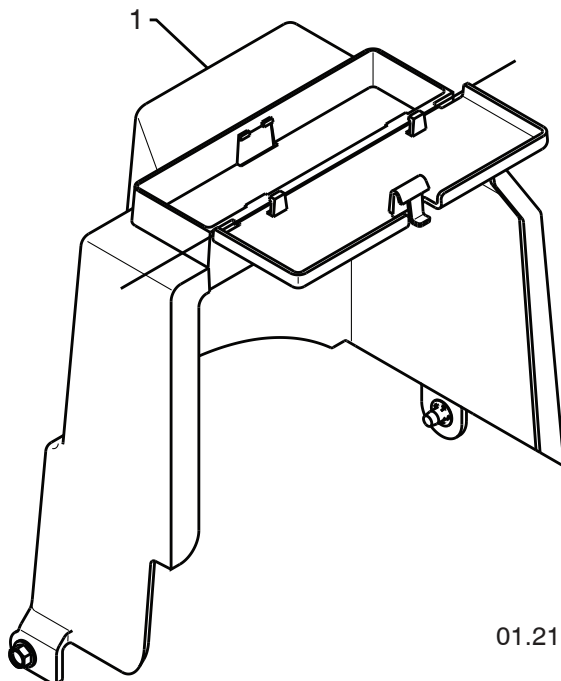
REPAIR PARTS

CHASSIS / ENGINE / PULLEYS

SNOW THROWER - MODEL NO. 16530-LS (96193006000), PRODUCT NO. 961 93 00-60



| KEY NO. | PART NO. | DESCRIPTION |
|---------|--------------|-----------------------------|
| 1 | 532 40 80-19 | IMPELLER BELT |
| 2 | 532 41 97-44 | TRACTION BELT |
| 3 | 532 43 58-02 | IDLER ARM BRACKET |
| 4 | 532 43 08-46 | IDLER PULLEY |
| 5 | 532 43 58-01 | IDLER ARM BRACKET |
| 6 | 532 42 65-89 | NUT 5/16-18 |
| 7 | 874 78 05-24 | SCREW 5/16-18 X 1.50 |
| 8 | 532 42 42-97 | SHOULDER BOLT 5/16-18 X .50 |
| 9 | 532 42 88-67 | SCREW 5/16-18 X .625 |
| 10 | 532 75 11-53 | NUT 5/16-18 NYLOCK |
| 11 | 532 18 77-86 | TRACTION IDLER BRACKET |
| 12 | 532 18 05-22 | TRACTION PULLEY |
| 13 | 532 05 92-89 | WASHER |
| 14 | 873 80 05-00 | NUT 5/16-18 |
| 15 | 874 78 05-20 | SCREW 5/16-18 X 1.25 |
| 16 | 532 85 10-84 | SCREW 3/8-24 X 1.375 |
| 17 | 532 40 00-26 | WASHER |
| 18 | 532 42 64-92 | PULLEY ENG IMPELLER |
| 19 | 532 42 64-90 | PULLEY ENG TRACTION |
| 20 | 874 61 05-16 | SCREW 5/16-24 X 1.00 |
| 21 | 810 04 05-00 | LOCKWASHER 5/16 |
| 22 | 532 15 54-52 | BELT GUIDE |
| 23 | 811 05 05-00 | LOCKWASHER 5/16 |
| 24 | 532 17 53-31 | IDLER BUSHING |



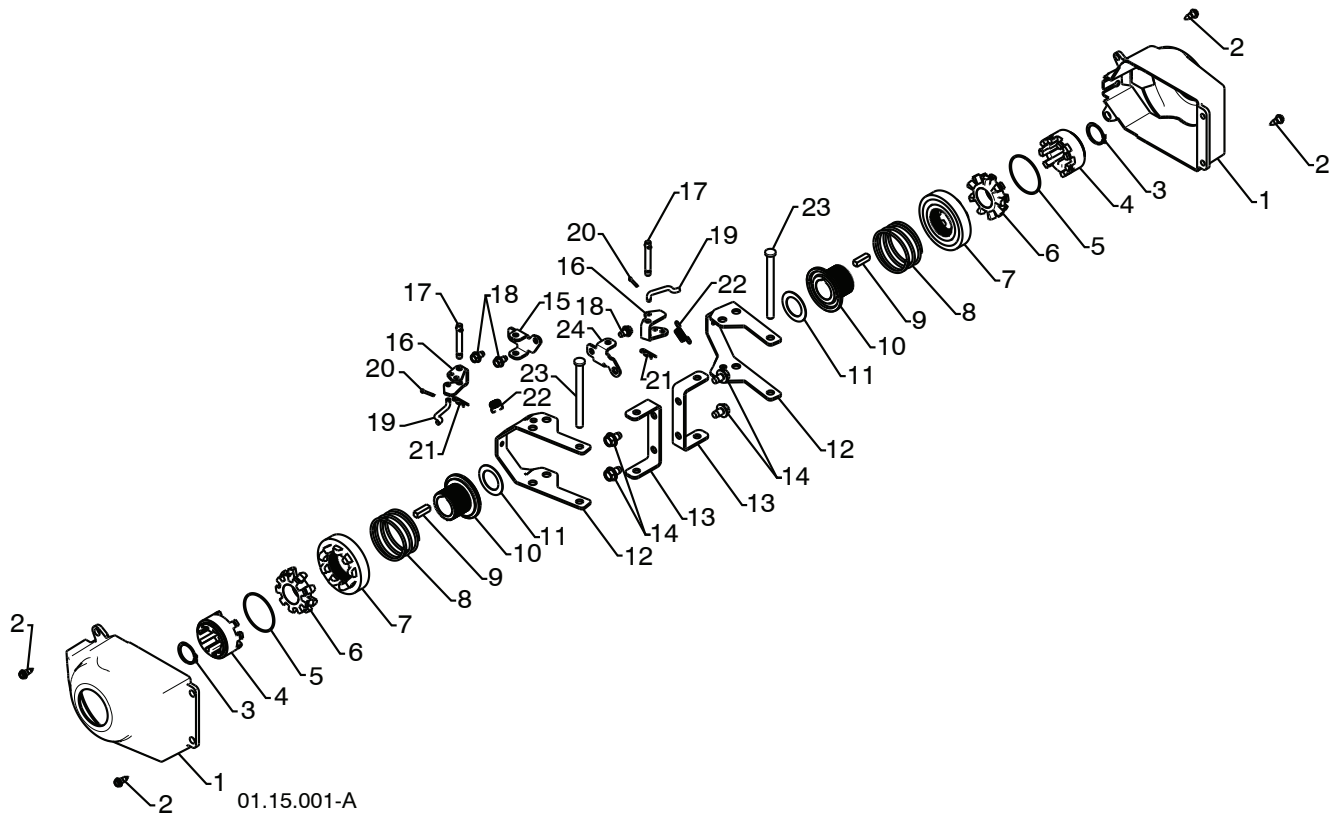
| KEY NO. | PART NO. | DESCRIPTION |
|---------|--------------|----------------|
| 1 | 532 42 86-84 | COVER ASSEMBLY |

NOTE: All component dimensions given in U.S. inches. 1 inch = 25.4 mm
IMPORTANT: Use only Original Equipment Manufacturer (O.E.M.) replacement parts.
 Failure to do so could be hazardous, damage your snow thrower and void your warranty.

REPAIR PARTS

WHEELS

SNOW THROWER - MODEL NO. 16530-LS (96193006000), PRODUCT NO. 961 93 00-60



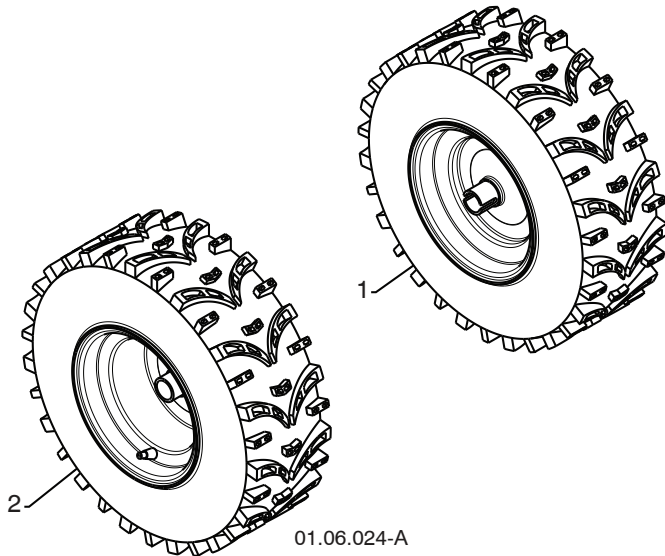
| KEY NO. | PART NO. | DESCRIPTION |
|---------|--------------|---------------------|
| 1 | 532 40 51-61 | COVER |
| 2 | 532 18 44-71 | SHOULDER SCREW |
| 3 | 812 00 00-45 | RETAINER RING |
| 4 | 532 19 21-26 | WHEEL DRIVER |
| 5 | 532 18 24-66 | RETAINER RING |
| 6 | 532 18 76-22 | WHEEL LOBE |
| 7 | 532 19 49-41 | CLUTCH SLIDE |
| 8 | 532 17 91-39 | SPRING |
| 9 | 532 18 92-82 | SQUARE KEY |
| 10 | 532 19 49-40 | AXLE LOBE |
| 11 | 532 17 46-97 | THRUST WASHER |
| 12 | 532 43 58-25 | STEERING YOKE |
| 13 | 532 43 58-23 | STEERING BRACKET |
| 14 | 817 49 05-08 | SCREW 5/16-18 X .50 |
| 15 | 532 19 95-11 | PIVOT BRACKET |
| 16 | 532 19 95-18 | BELLCRANK |
| 17 | 532 18 18-47 | BELLCRANK PIN |
| 18 | 817 60 04-06 | SCREW 1/4-20 X .375 |
| 19 | 532 40 50-77 | STEERING LINK |
| 20 | 532 70 02-79 | RETAINER |
| 21 | 532 08 51-79 | RETAINER |
| 22 | 532 19 38-85 | SPRING |
| 23 | 532 18 20-15 | LEVER PIN |
| 24 | 532 19 95-12 | PIVOT BRACKET |

NOTE: All component dimensions given in U.S. inches. 1 inch = 25.4 mm
IMPORTANT: Use only Original Equipment Manufacturer (O.E.M.) replacement parts.
 Failure to do so could be hazardous, damage your snow thrower and void your warranty.

REPAIR PARTS

WHEELS

SNOW THROWER - MODEL NO. 16530-LS (96193006000), PRODUCT NO. 961 93 00-60



| KEY NO. | PART NO. | DESCRIPTION |
|---------|--------------|-------------------|
| 1 | 532 43 65-68 | WHEEL ASSEMBLY LH |
| 2 | 532 43 65-69 | WHEEL ASSEMBLY RH |



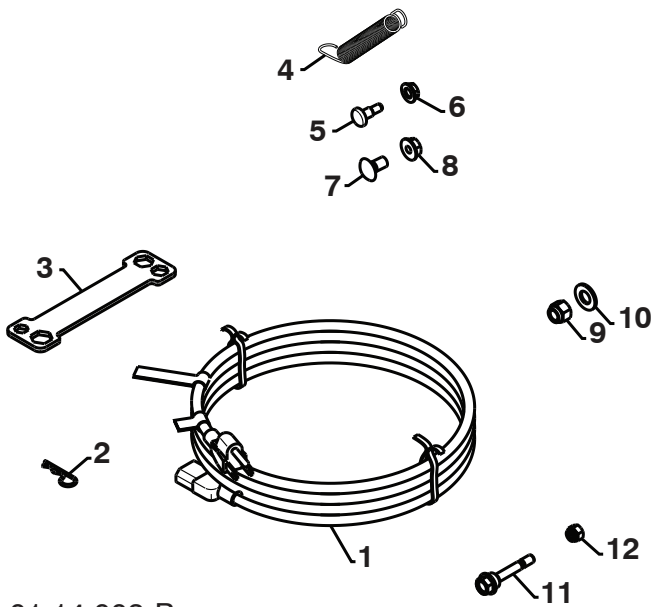
| KEY NO. | PART NO. | DESCRIPTION |
|---------|--------------|------------------------|
| 1 | 532 43 58-27 | STEER CABLE BRACKET LH |
| 2 | 532 43 58-26 | STEER CABLE BRACKET RH |

NOTE: All component dimensions given in U.S. inches. 1 inch = 25.4 mm
IMPORTANT: Use only Original Equipment Manufacturer (O.E.M.) replacement parts.
 Failure to do so could be hazardous, damage your snow thrower and void your warranty.

REPAIR PARTS

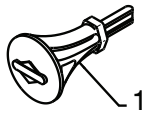
BAG OF PARTS

SNOW THROWER - MODEL NO. 16530-LS (96193006000), PRODUCT NO. 961 93 00-60



01.14.003-B

| KEY NO. | PART NO. | DESCRIPTION |
|---------|--------------|-----------------------------|
| 1 | 532 19 85-63 | POWER CORD |
| 2 | 532 16 96-75 | RETAINER PIN |
| 3 | 532 42 91-12 | WRENCH |
| 4 | 532 18 45-05 | REMOTE SPRING |
| 5 | 532 17 98-29 | SHOULDER BOLT 1/4-20 |
| 6 | 532 19 17-30 | LOCKNUT 1/4-20 |
| 7 | 872 25 05-05 | CARRIAGE BOLT 5/16-18 X 5/8 |
| 8 | 532 75 11-53 | LOCKNUT 5/16-18 |
| 9 | 873 80 06-00 | LOCKNUT 3/8-16 |
| 10 | 819 13 13-16 | WASHER 3/8 |
| 11 | 532 19 20-90 | SHEAR BOLT 1/4-20 X 1-13/16 |
| 12 | 873 80 04-00 | LOCKNUT 1/4-20 |



01.14.007-A

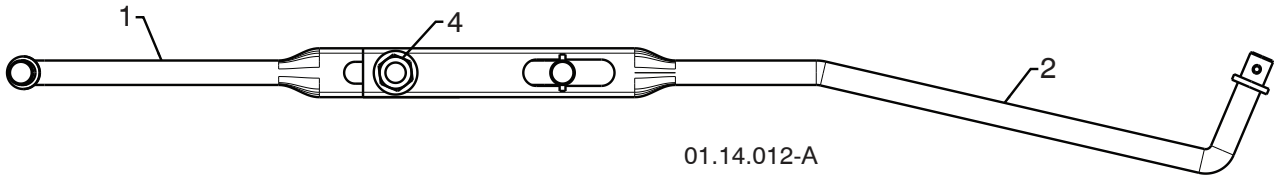
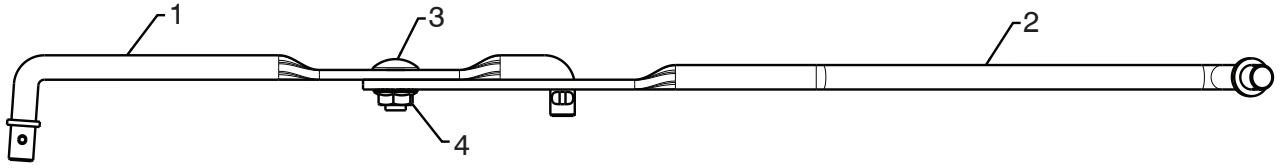
| KEY NO. | PART NO. | DESCRIPTION |
|---------|--------------|---------------------|
| 1 | 532 19 30-71 | SAFETY IGNITION KEY |

NOTE: All component dimensions given in U.S. inches. 1 inch = 25.4 mm
IMPORTANT: Use only Original Equipment Manufacturer (O.E.M.) replacement parts.
 Failure to do so could be hazardous, damage your snow thrower and void your warranty.

REPAIR PARTS

BAG OF PARTS

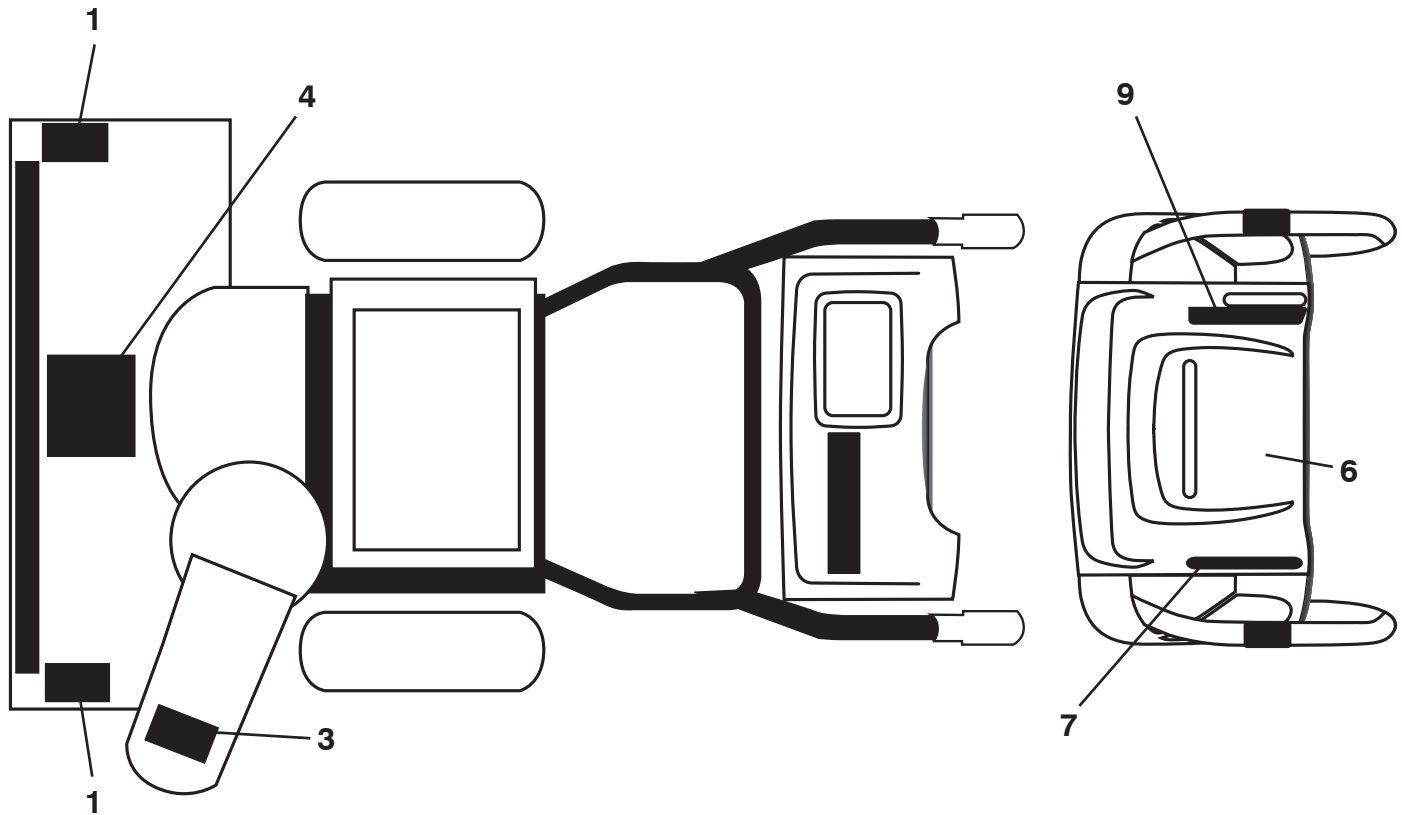
SNOW THROWER - MODEL NO. 16530-LS (96193006000), PRODUCT NO. 961 93 00-60



01.14.012-A

| KEY NO. | PART NO. | DESCRIPTION |
|---------|--------------|-----------------------------|
| 1 | 532 18 04-45 | SHIFTER ROD TOP |
| 2 | 532 18 77-16 | SHIFTER ROD BOTTOM |
| 3 | 872 27 05-05 | CARRIAGE BOLT 5/16-18 X .75 |
| 4 | 532 15 53-77 | NUT 5/16-18 |

NOTE: All component dimensions given in U.S. inches. 1 inch = 25.4 mm
IMPORTANT: Use only Original Equipment Manufacturer (O.E.M.) replacement parts.
Failure to do so could be hazardous, damage your snow thrower and void your warranty.



| KEY PART NO. | PART NO. | DESCRIPTION |
|--------------|--------------|------------------------------|
| 1 | 532 18 10-37 | DECAL, DANGER |
| 3 | 532 18 10-35 | DECAL, DANGER, DEFLECTOR |
| 4 | 532 18 10-42 | DECAL, DANGER |
| 6 | 532 42 95-73 | DECAL, INSTRUCTION |
| 7 | 532 42 95-69 | DECAL, LT. WO/DEFL. GRY |
| 9 | 532 42 95-71 | DECAL, RT. SPD/LEV/PWRST/GRY |
| -- | 532 43 56-54 | OPERATOR'S MANUAL, ENGLISH |
| -- | 532 43 56-56 | OPERATOR'S MANUAL, FRENCH |

NOTE: All component dimensions given in U.S. inches. 1 inch = 25.4 mm
IMPORTANT: Use only Original Equipment Manufacturer (O.E.M.) replacement parts.
 Failure to do so could be hazardous, damage your snow thrower and void your warranty.